

Data Path : Z:\pestpcbsrv\HPCHEM1\ECD_P\Data\PP071724\
 Data File : PP066355.D
 Signal(s) : Signal #1: ECD1A.ch Signal #2: ECD2B.ch
 Acq On : 17 Jul 2024 10:14
 Operator : YP\AJ
 Sample : PB162083BS
 Misc :
 ALS Vial : 8 Sample Multiplier: 1

Instrument :
 ECD_P
 ClientSampleId :
 PB162083BS

Integration File signal 1: autoint1.e
 Integration File signal 2: autoint2.e
 Quant Time: Jul 18 01:42:05 2024
 Quant Method : Z:\pestpcbsrv\HPCHEM1\ECD_P\methods\PP071624.M
 Quant Title : GC EXTRACTABLES
 QLast Update : Wed Jul 17 07:20:03 2024
 Response via : Initial Calibration
 Integrator: ChemStation

Volume Inj. : 2 µl
 Signal #1 Phase : ZB-MR1 Signal #2 Phase: ZB-MR2
 Signal #1 Info : 30Mx0.32mmx 0.50µ Signal #2 Info : 30M x 0.32mm x 0.25µm

Compound	RT#1	RT#2	Resp#1	Resp#2	ng/ml	ng/ml

System Monitoring Compounds						
1) SA Tetrachlo...	4.790	4.028	39852894	42157396	22.621	22.077
2) SA Decachlor...	10.795	9.208	40179827	27323101	22.892	21.414
Target Compounds						
3) L1 AR-1016-1	5.970	5.142	38685816	30486267	527.828	486.648
4) L1 AR-1016-2	5.993	5.162	57525097	43489950	526.027	488.630
5) L1 AR-1016-3	6.057	5.344	36650792	22493714	542.962	476.469
6) L1 AR-1016-4	6.157	5.382	29965421	18841584	539.872	493.750
7) L1 AR-1016-5	6.453	5.603	31398374	23707751	564.724	489.151
8) L2 AR-1221-1	4.992	4.244	3052393	2918332	137.482	126.268
9) L2 AR-1221-2	5.085	4.335	4083017	3784424	243.255	219.235
10) L2 AR-1221-3	5.163	4.413	18172987	16644951	354.742	329.259
11) L3 AR-1232-1	5.163	4.413	18172987	16644951	415.311	389.988
12) L3 AR-1232-2	5.701	5.142	27607021	30486267	1068.400	1033.691
13) L3 AR-1232-3	5.970	5.344	38685816	22493714	1143.940	1009.943
14) L3 AR-1232-4	6.157	5.426	29965421	22907345	1156.013	1139.310
15) L3 AR-1232-5	6.245	5.603	28201709	23707751	1300.770	1113.031
16) L4 AR-1242-1	5.970	5.142	38685816	30486267	696.935	583.234
17) L4 AR-1242-2	5.993	5.162	57525097	43489950	642.809	602.089
18) L4 AR-1242-3	6.057	5.344	36650792	22493714	667.670	587.897
19) L4 AR-1242-4	6.157	5.426	29965421	22907345	654.434	603.543
20) L4 AR-1242-5	6.899	5.960	6416602	19256100	129.004	426.840 #
21) L5 AR-1248-1	5.970	5.142	38685816	30486267	793.739	739.953
22) L5 AR-1248-2	6.245	5.382	28201709	18841584	369.444	331.780
23) L5 AR-1248-3	6.453	5.426	31398374	22907345	385.503	388.485
24) L5 AR-1248-4	6.832f	5.603	32330181	23707751	347.101	345.624
25) L5 AR-1248-5	6.899	6.000	6416602	3403905	69.547	54.275
26) L6 AR-1254-1	6.832	5.960	32330181	19256100	345.703	202.334 #
27) L6 AR-1254-2	7.049	6.107	27066658	17495708	191.887	210.662
28) L6 AR-1254-3	7.420	6.532	13770458	37141371	106.174	297.263 #
29) L6 AR-1254-4	7.706	6.747	9432351	2596146	102.863	37.942 #
30) L6 AR-1254-5	8.125	7.170	70276301	50350049	707.048	501.502 #
31) L7 AR-1260-1	7.584	6.650	57559966	41919346	544.117	490.341
32) L7 AR-1260-2	7.839	6.836	63223988	48086049	548.780	494.491
33) L7 AR-1260-3	8.203	6.995	41018065	45220465	516.804	492.876
34) L7 AR-1260-4	8.448	7.472	44962431	30779044	516.293	473.606
35) L7 AR-1260-5	8.793	7.711	76774663	66638545	496.573	474.057
36) L8 AR-1262-1	8.265	7.261	22195798	18860435	393.685	396.331
37) L8 AR-1262-2	8.793	7.472	76774663	30779044	406.152	329.013
38) L8 AR-1262-3	9.152f	7.997	45637615	12040503	349.661	168.292 #
39) L8 AR-1262-4	9.216f	8.062	28104683	47091801	249.684	362.941 #
40) L8 AR-1262-5	9.955	8.592	18254547	13461456	280.352	224.913
41) L9 AR-1268-1	9.152f	7.997	45637615	12040503	195.166	59.782 #

Data Path : Z:\pestpcbsrv\HPCHEM1\ECD_P\Data\PP071724\
 Data File : PP066355.D
 Signal(s) : Signal #1: ECD1A.ch Signal #2: ECD2B.ch
 Acq On : 17 Jul 2024 10:14
 Operator : YP\AJ
 Sample : PB162083BS
 Misc :
 ALS Vial : 8 Sample Multiplier: 1

Instrument :
 ECD_P
ClientSampleId :
 PB162083BS

Integration File signal 1: autoint1.e
 Integration File signal 2: autoint2.e
 Quant Time: Jul 18 01:42:05 2024
 Quant Method : Z:\pestpcbsrv\HPCHEM1\ECD_P\methods\PP071624.M
 Quant Title : GC EXTRACTABLES
 QLast Update : Wed Jul 17 07:20:03 2024
 Response via : Initial Calibration
 Integrator: ChemStation

Volume Inj. : 2 µl
 Signal #1 Phase : ZB-MR1 Signal #2 Phase: ZB-MR2
 Signal #1 Info : 30Mx0.32mmx 0.50µ Signal #2 Info : 30M x 0.32mm x 0.25µm

	Compound	RT#1	RT#2	Resp#1	Resp#2	ng/ml	ng/ml
42)	L9 AR-1268-2	9.216f	8.062	28104683	47091801	131.717	255.804 #
43)	L9 AR-1268-3	9.489	8.280	1576132	1239300	8.228	7.663
44)	L9 AR-1268-4	9.955	8.592	18254547	13461456	261.733	199.936
45)	L9 AR-1268-5	10.418	8.918	6562129	5073048	10.729	10.578

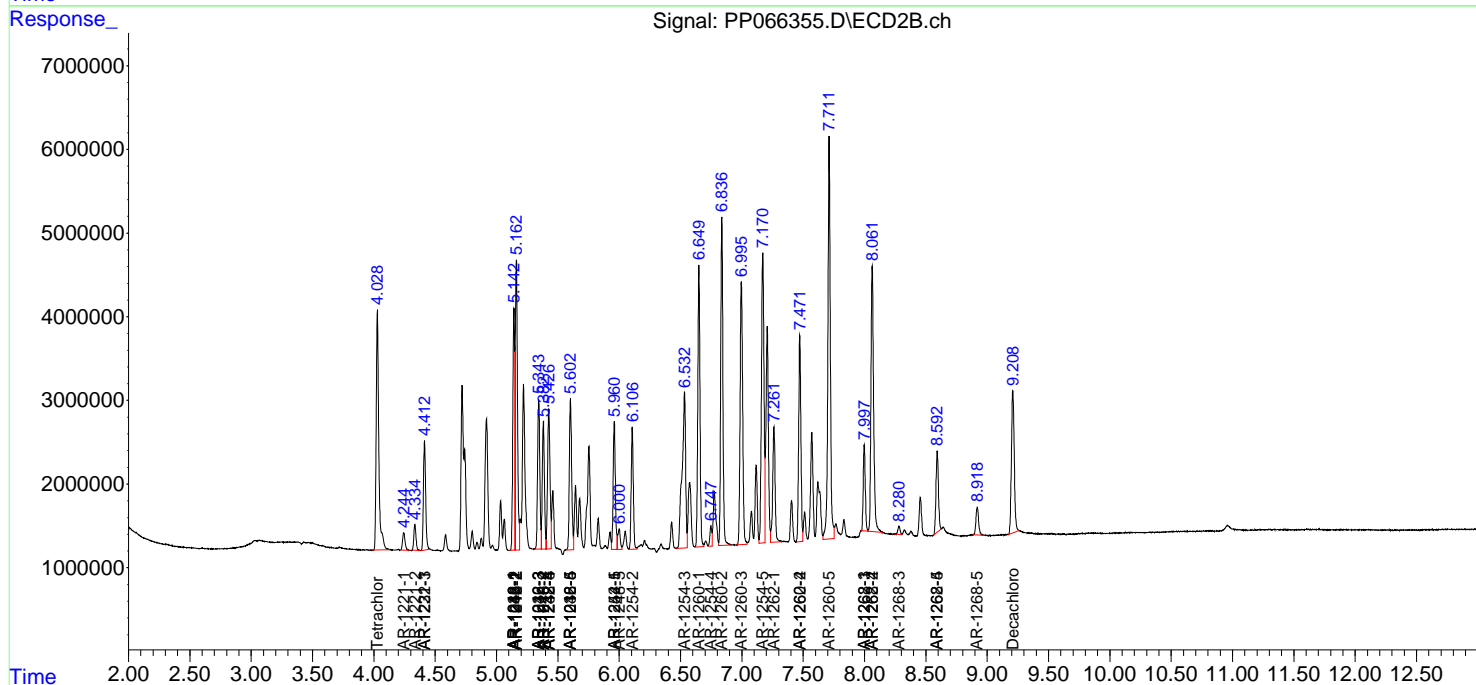
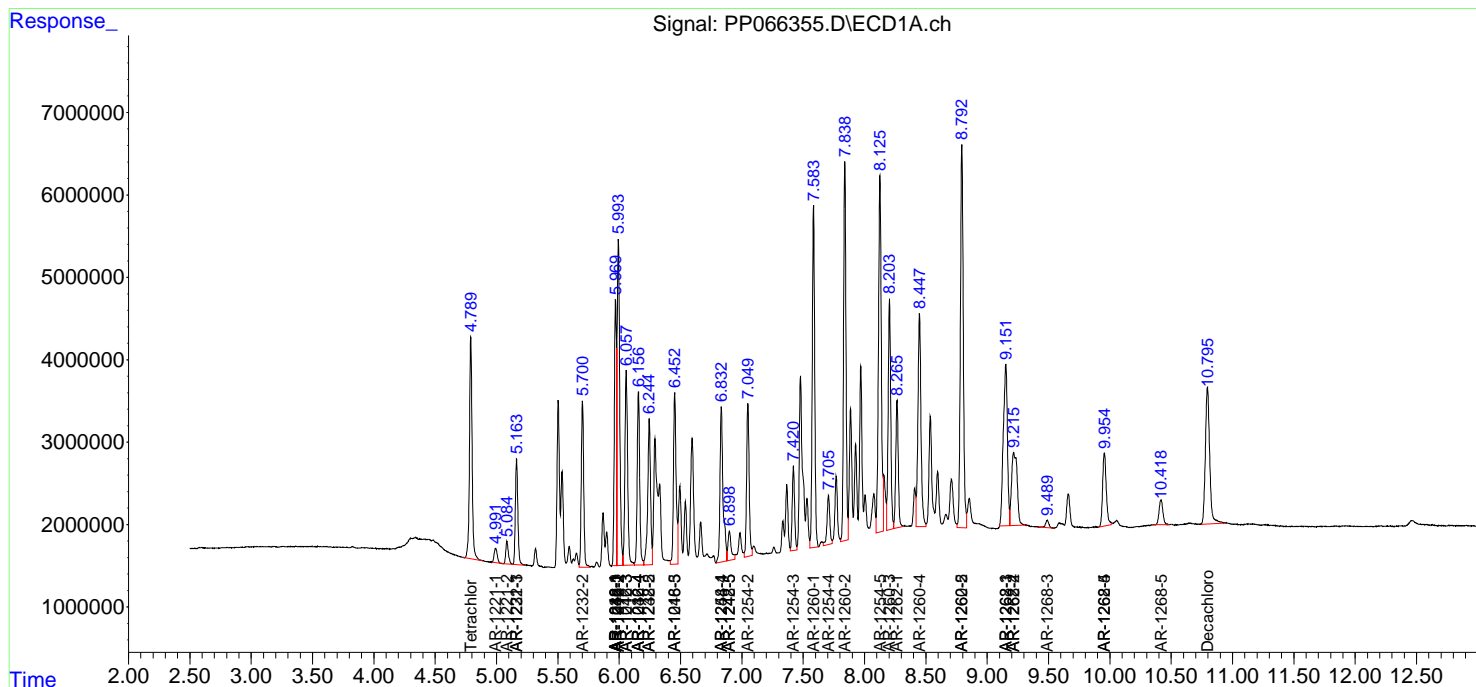
(f)=RT Delta > 1/2 Window (#)=Amounts differ by > 25% (m)=manual int.

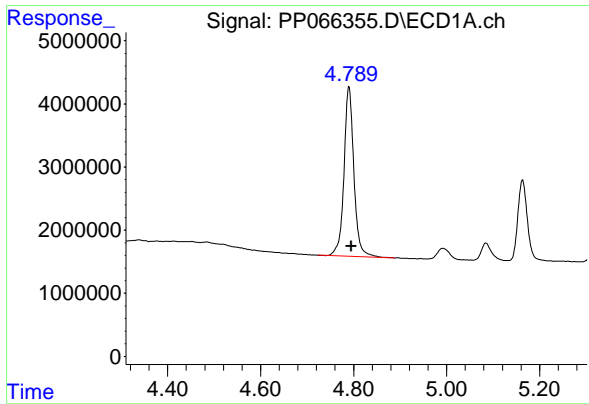
Data Path : Z:\pestpcbsrv\HPCHEM1\ECD_P\Data\PP071724\
 Data File : PP066355.D
 Signal(s) : Signal #1: ECD1A.ch Signal #2: ECD2B.ch
 Acq On : 17 Jul 2024 10:14
 Operator : YP\AJ
 Sample : PB162083BS
 Misc :
 ALS Vial : 8 Sample Multiplier: 1

Instrument :
 ECD_P
 ClientSampleId :
 PB162083BS

Integration File signal 1: autoint1.e
 Integration File signal 2: autoint2.e
 Quant Time: Jul 18 01:42:05 2024
 Quant Method : Z:\pestpcbsrv\HPCHEM1\ECD_P\methods\PP071624.M
 Quant Title : GC EXTRACTABLES
 QLast Update : Wed Jul 17 07:20:03 2024
 Response via : Initial Calibration
 Integrator: ChemStation

Volume Inj. : 2 µl
 Signal #1 Phase : ZB-MR1 Signal #2 Phase: ZB-MR2
 Signal #1 Info : 30Mx0.32mmx 0.50µ Signal #2 Info : 30M x 0.32mm x 0.25µm

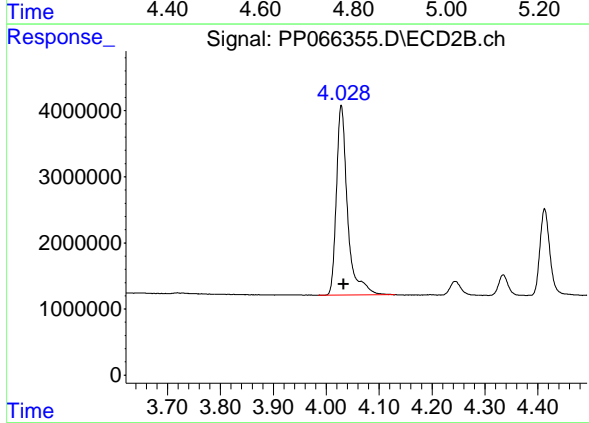




#1 Tetrachloro-m-xylene

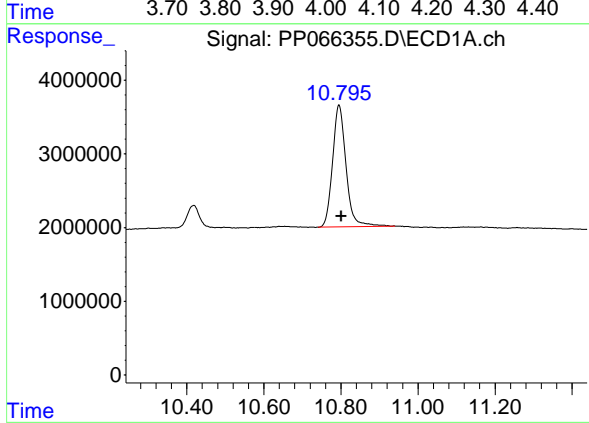
R.T.: 4.790 min
 Delta R.T.: -0.005 min
 Response: 39852894
 Conc: 22.62 ng/ml

Instrument : ECD_P
 ClientSampleId : PB162083BS



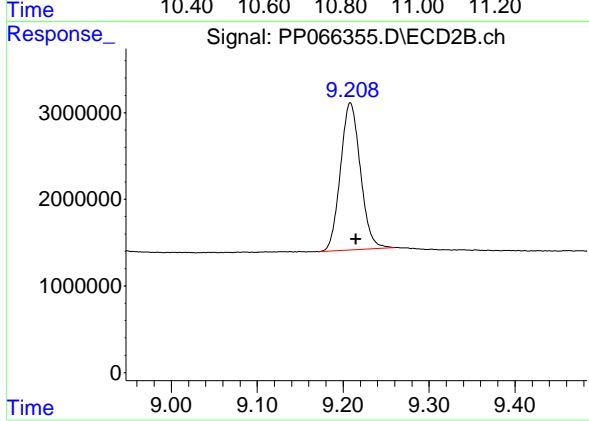
#1 Tetrachloro-m-xylene

R.T.: 4.028 min
 Delta R.T.: -0.005 min
 Response: 42157396
 Conc: 22.08 ng/ml



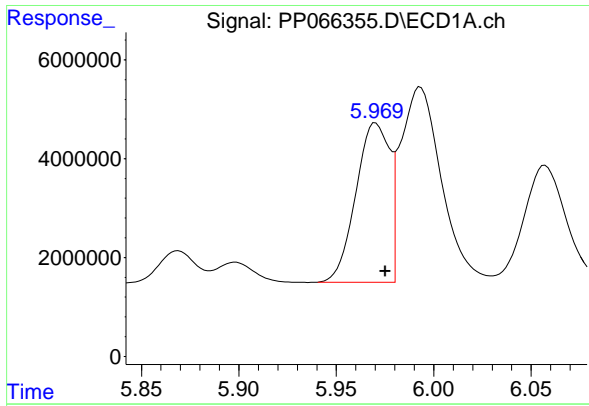
#2 Decachlorobiphenyl

R.T.: 10.795 min
 Delta R.T.: -0.006 min
 Response: 40179827
 Conc: 22.89 ng/ml



#2 Decachlorobiphenyl

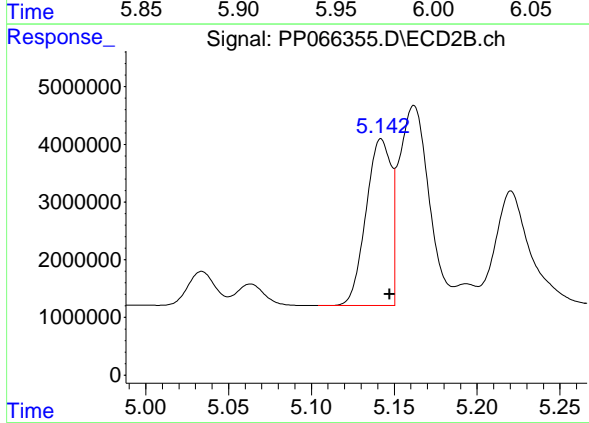
R.T.: 9.208 min
 Delta R.T.: -0.006 min
 Response: 27323101
 Conc: 21.41 ng/ml



#3 AR-1016-1

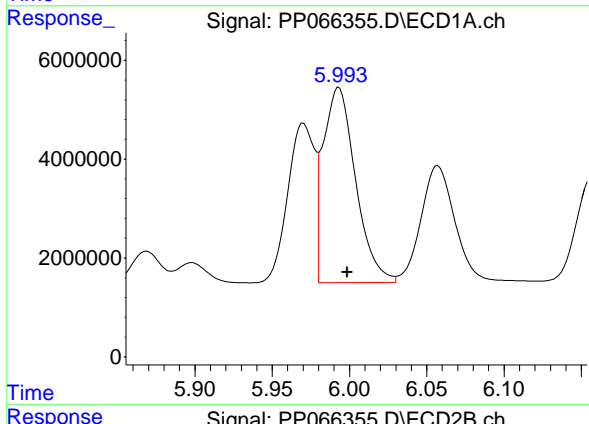
R.T.: 5.970 min
 Delta R.T.: -0.005 min
 Response: 38685816
 Conc: 527.83 ng/ml

Instrument :
 ECD_P
 ClientSampleId :
 PB162083BS



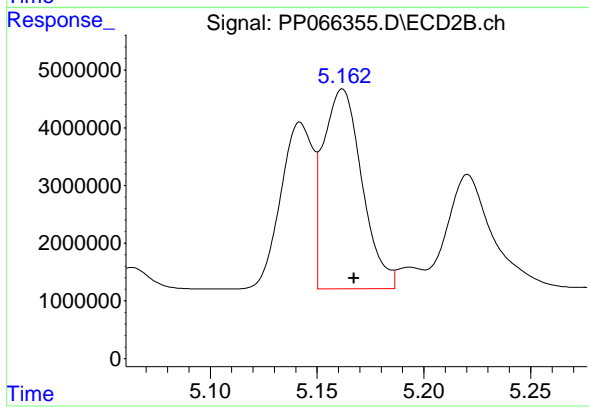
#3 AR-1016-1

R.T.: 5.142 min
 Delta R.T.: -0.005 min
 Response: 30486267
 Conc: 486.65 ng/ml



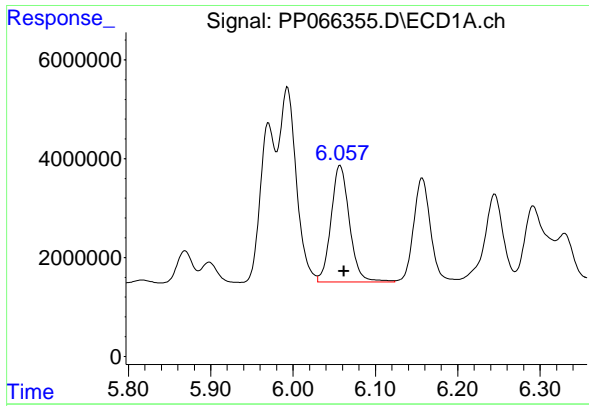
#4 AR-1016-2

R.T.: 5.993 min
 Delta R.T.: -0.005 min
 Response: 57525097
 Conc: 526.03 ng/ml



#4 AR-1016-2

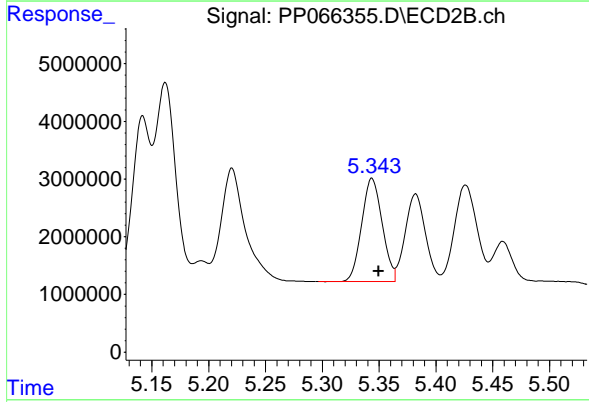
R.T.: 5.162 min
 Delta R.T.: -0.005 min
 Response: 43489950
 Conc: 488.63 ng/ml



#5 AR-1016-3

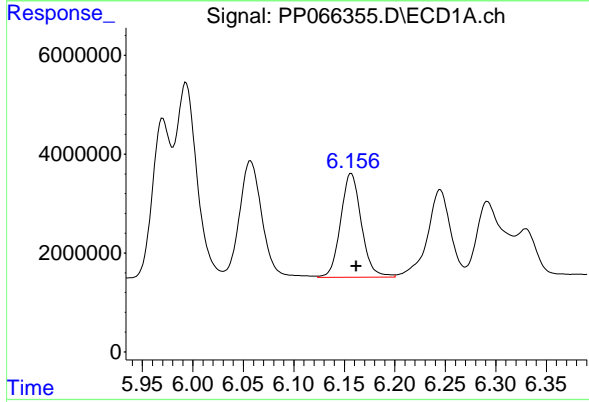
R.T.: 6.057 min
 Delta R.T.: -0.005 min
 Response: 36650792
 Conc: 542.96 ng/ml

Instrument :
 ECD_P
 ClientSampleId :
 PB162083BS



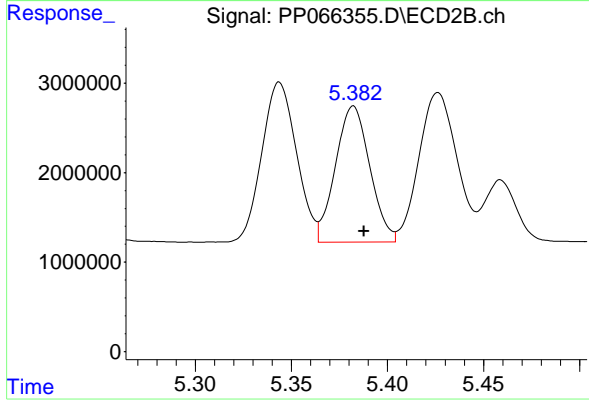
#5 AR-1016-3

R.T.: 5.344 min
 Delta R.T.: -0.006 min
 Response: 22493714
 Conc: 476.47 ng/ml



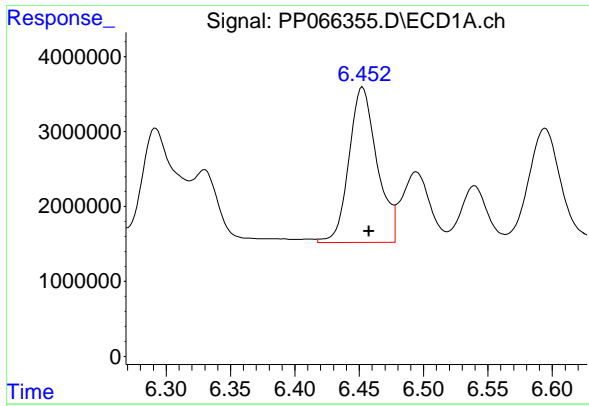
#6 AR-1016-4

R.T.: 6.157 min
 Delta R.T.: -0.005 min
 Response: 29965421
 Conc: 539.87 ng/ml



#6 AR-1016-4

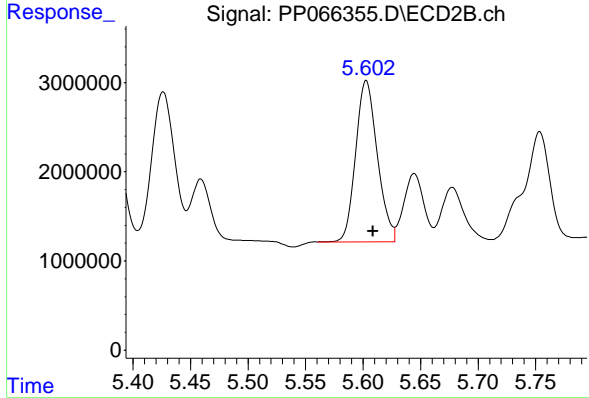
R.T.: 5.382 min
 Delta R.T.: -0.006 min
 Response: 18841584
 Conc: 493.75 ng/ml



#7 AR-1016-5

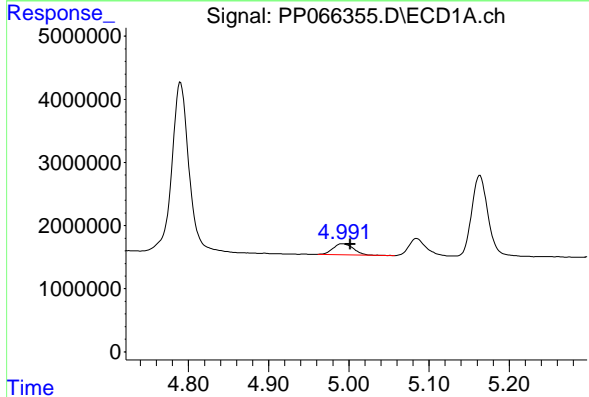
R.T.: 6.453 min
 Delta R.T.: -0.005 min
 Response: 31398374
 Conc: 564.72 ng/ml

Instrument :
 ECD_P
 ClientSampleId :
 PB162083BS



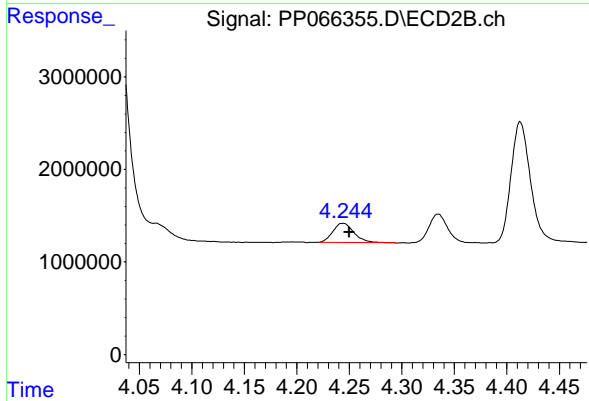
#7 AR-1016-5

R.T.: 5.603 min
 Delta R.T.: -0.006 min
 Response: 23707751
 Conc: 489.15 ng/ml



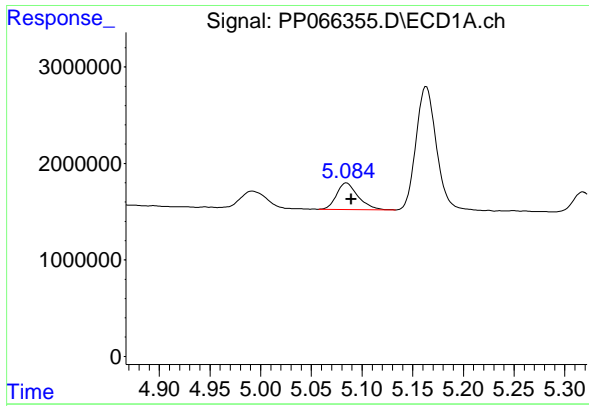
#8 AR-1221-1

R.T.: 4.992 min
 Delta R.T.: -0.010 min
 Response: 3052393
 Conc: 137.48 ng/ml



#8 AR-1221-1

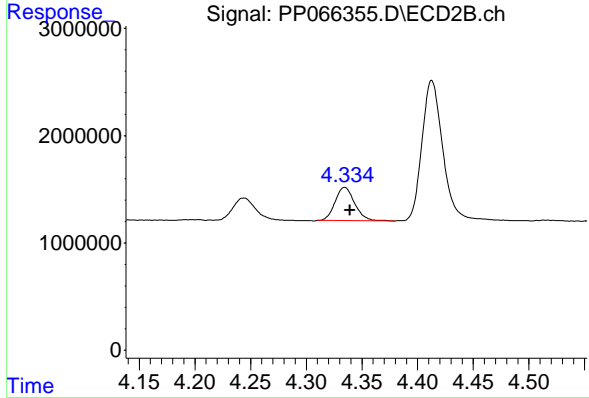
R.T.: 4.244 min
 Delta R.T.: -0.006 min
 Response: 2918332
 Conc: 126.27 ng/ml



#9 AR-1221-2

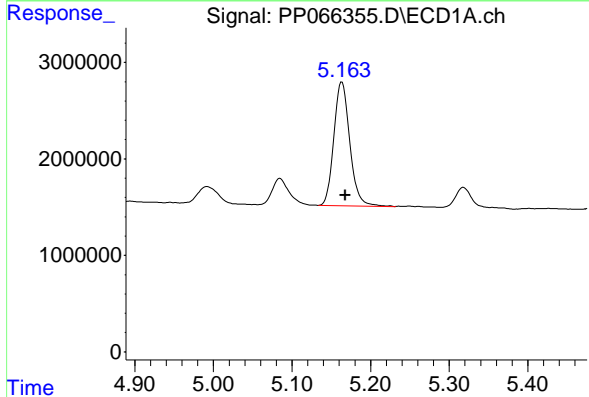
R.T.: 5.085 min
 Delta R.T.: -0.005 min
 Response: 4083017
 Conc: 243.26 ng/ml

Instrument :
 ECD_P
 ClientSampleId :
 PB162083BS



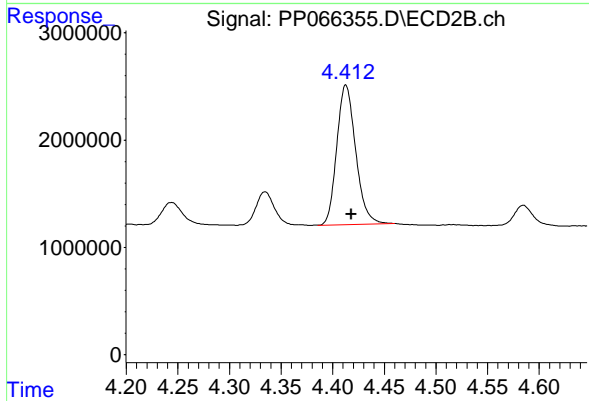
#9 AR-1221-2

R.T.: 4.335 min
 Delta R.T.: -0.005 min
 Response: 3784424
 Conc: 219.24 ng/ml



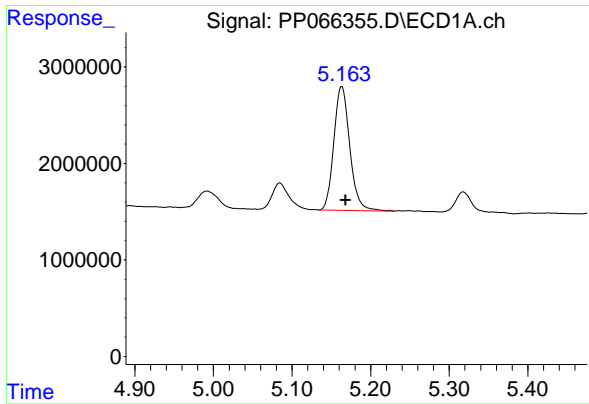
#10 AR-1221-3

R.T.: 5.163 min
 Delta R.T.: -0.005 min
 Response: 18172987
 Conc: 354.74 ng/ml



#10 AR-1221-3

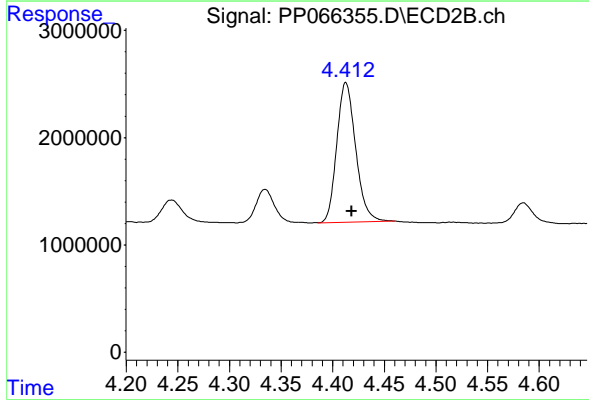
R.T.: 4.413 min
 Delta R.T.: -0.005 min
 Response: 16644951
 Conc: 329.26 ng/ml



#11 AR-1232-1

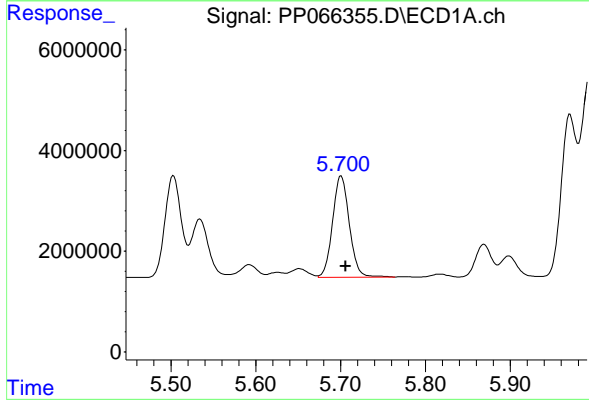
R.T.: 5.163 min
 Delta R.T.: -0.005 min
 Response: 18172987
 Conc: 415.31 ng/ml

Instrument :
 ECD_P
 ClientSampleId :
 PB162083BS



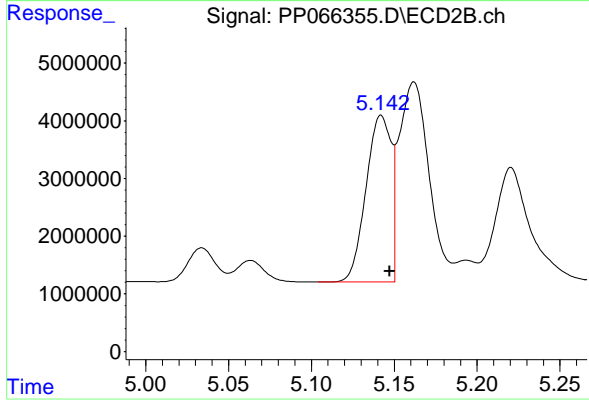
#11 AR-1232-1

R.T.: 4.413 min
 Delta R.T.: -0.006 min
 Response: 16644951
 Conc: 389.99 ng/ml



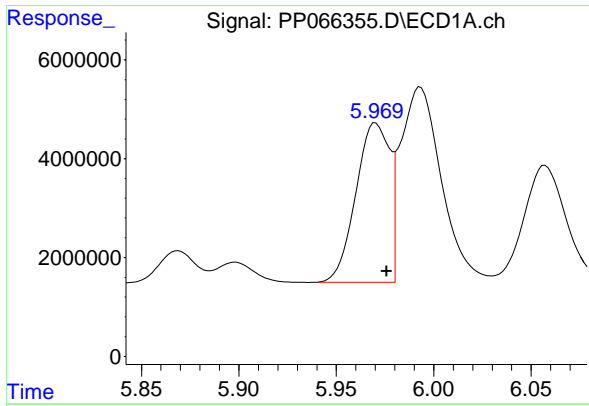
#12 AR-1232-2

R.T.: 5.701 min
 Delta R.T.: -0.005 min
 Response: 27607021
 Conc: 1068.40 ng/ml



#12 AR-1232-2

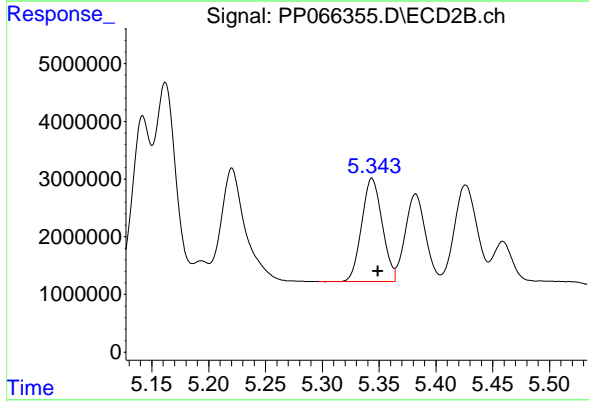
R.T.: 5.142 min
 Delta R.T.: -0.005 min
 Response: 30486267
 Conc: 1033.69 ng/ml



#13 AR-1232-3

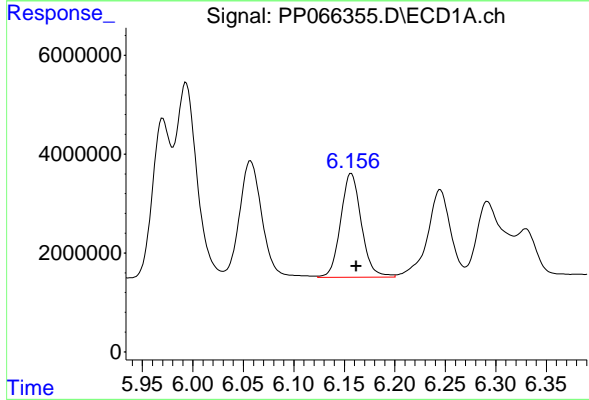
R.T.: 5.970 min
 Delta R.T.: -0.006 min
 Response: 38685816
 Conc: 1143.94 ng/ml

Instrument :
 ECD_P
 ClientSampleId :
 PB162083BS



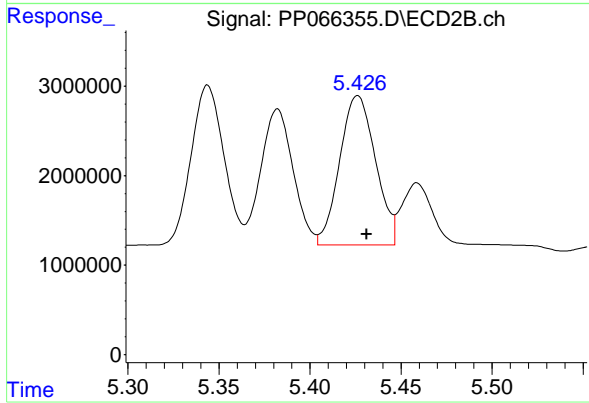
#13 AR-1232-3

R.T.: 5.344 min
 Delta R.T.: -0.005 min
 Response: 22493714
 Conc: 1009.94 ng/ml



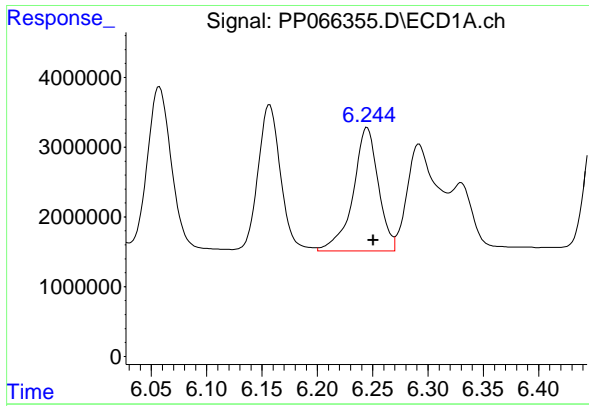
#14 AR-1232-4

R.T.: 6.157 min
 Delta R.T.: -0.005 min
 Response: 29965421
 Conc: 1156.01 ng/ml



#14 AR-1232-4

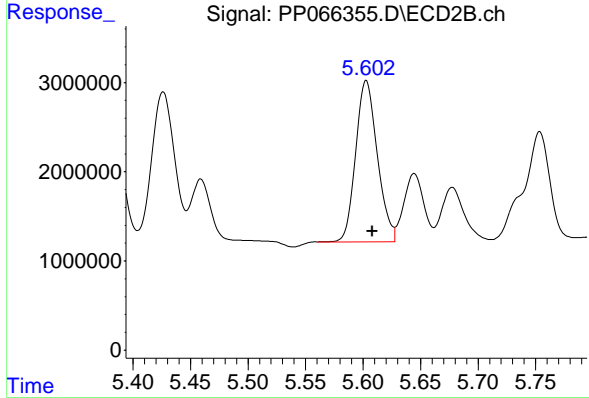
R.T.: 5.426 min
 Delta R.T.: -0.005 min
 Response: 22907345
 Conc: 1139.31 ng/ml



#15 AR-1232-5

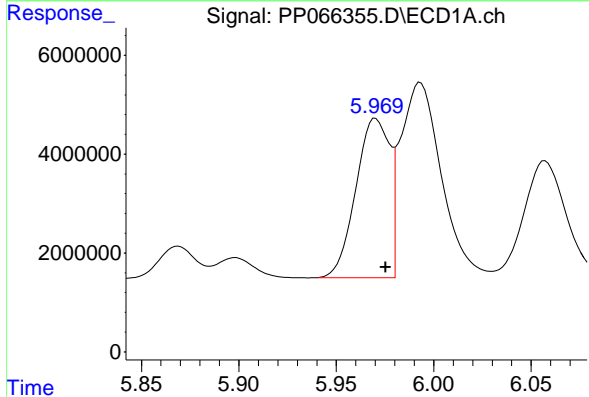
R.T.: 6.245 min
 Delta R.T.: -0.006 min
 Response: 28201709
 Conc: 1300.77 ng/ml

Instrument :
 ECD_P
 ClientSampleId :
 PB162083BS



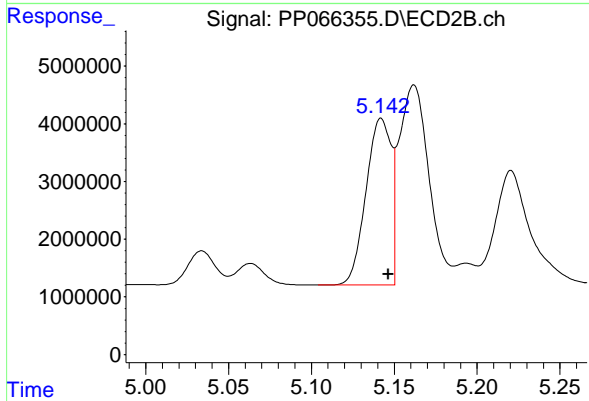
#15 AR-1232-5

R.T.: 5.603 min
 Delta R.T.: -0.005 min
 Response: 23707751
 Conc: 1113.03 ng/ml



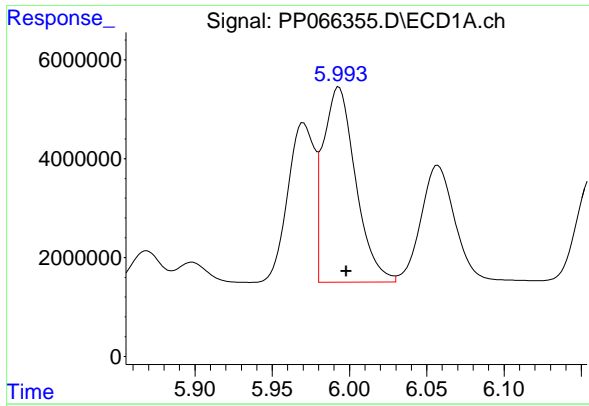
#16 AR-1242-1

R.T.: 5.970 min
 Delta R.T.: -0.005 min
 Response: 38685816
 Conc: 696.94 ng/ml



#16 AR-1242-1

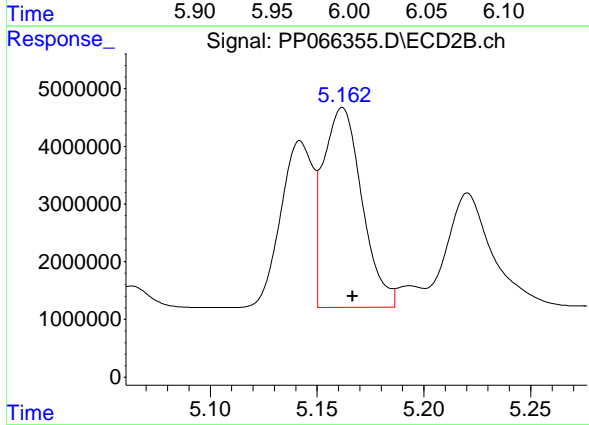
R.T.: 5.142 min
 Delta R.T.: -0.004 min
 Response: 30486267
 Conc: 583.23 ng/ml



#17 AR-1242-2

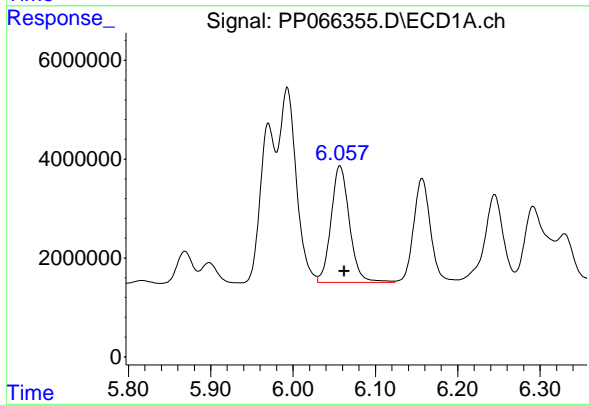
R.T.: 5.993 min
 Delta R.T.: -0.005 min
 Response: 57525097
 Conc: 642.81 ng/ml

Instrument :
 ECD_P
 ClientSampleId :
 PB162083BS



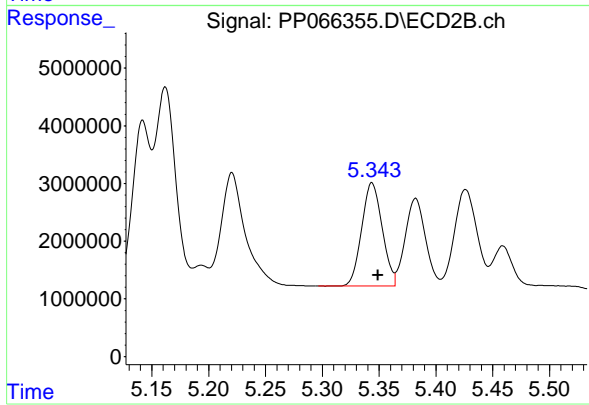
#17 AR-1242-2

R.T.: 5.162 min
 Delta R.T.: -0.005 min
 Response: 43489950
 Conc: 602.09 ng/ml



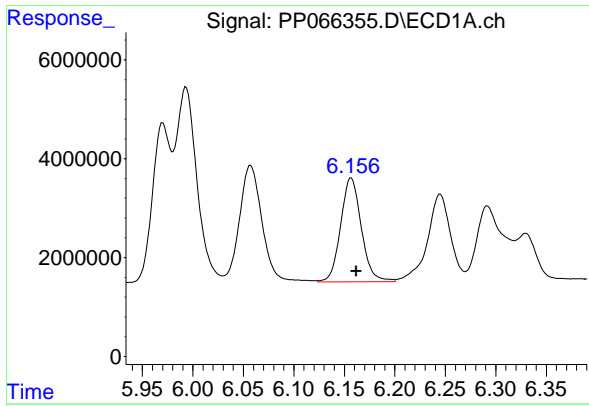
#18 AR-1242-3

R.T.: 6.057 min
 Delta R.T.: -0.005 min
 Response: 36650792
 Conc: 667.67 ng/ml



#18 AR-1242-3

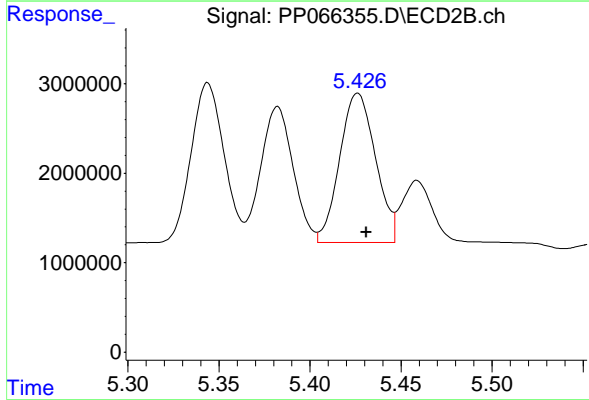
R.T.: 5.344 min
 Delta R.T.: -0.005 min
 Response: 22493714
 Conc: 587.90 ng/ml



#19 AR-1242-4

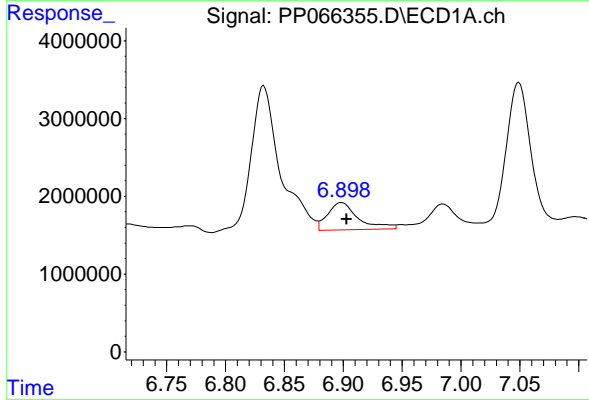
R.T.: 6.157 min
 Delta R.T.: -0.005 min
 Response: 29965421
 Conc: 654.43 ng/ml

Instrument :
 ECD_P
 ClientSampleId :
 PB162083BS



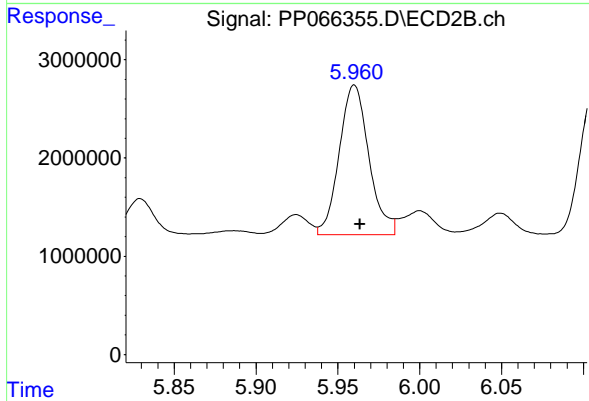
#19 AR-1242-4

R.T.: 5.426 min
 Delta R.T.: -0.005 min
 Response: 22907345
 Conc: 603.54 ng/ml



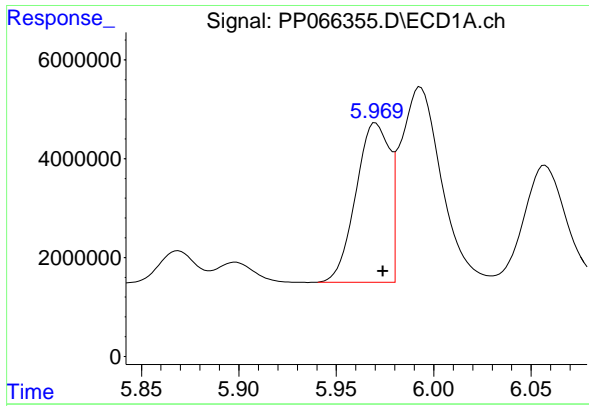
#20 AR-1242-5

R.T.: 6.899 min
 Delta R.T.: -0.004 min
 Response: 6416602
 Conc: 129.00 ng/ml



#20 AR-1242-5

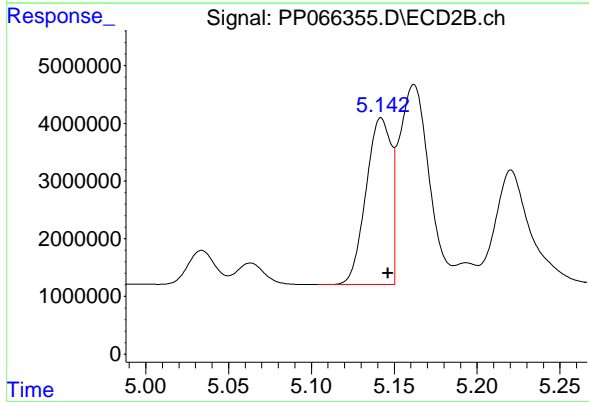
R.T.: 5.960 min
 Delta R.T.: -0.004 min
 Response: 19256100
 Conc: 426.84 ng/ml



#21 AR-1248-1

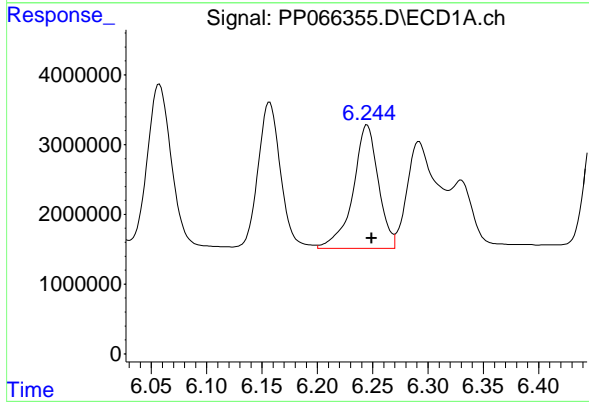
R.T.: 5.970 min
 Delta R.T.: -0.004 min
 Response: 38685816
 Conc: 793.74 ng/ml

Instrument :
 ECD_P
 ClientSampleId :
 PB162083BS



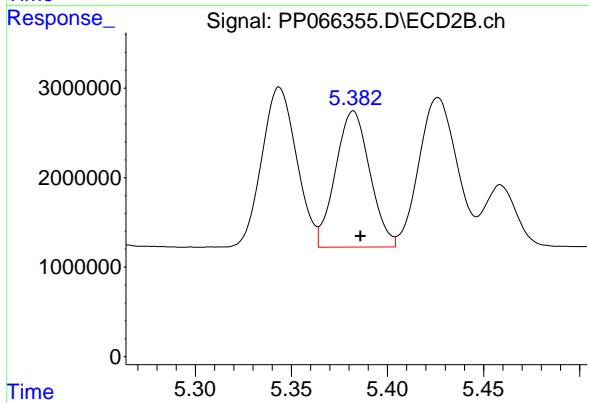
#21 AR-1248-1

R.T.: 5.142 min
 Delta R.T.: -0.004 min
 Response: 30486267
 Conc: 739.95 ng/ml



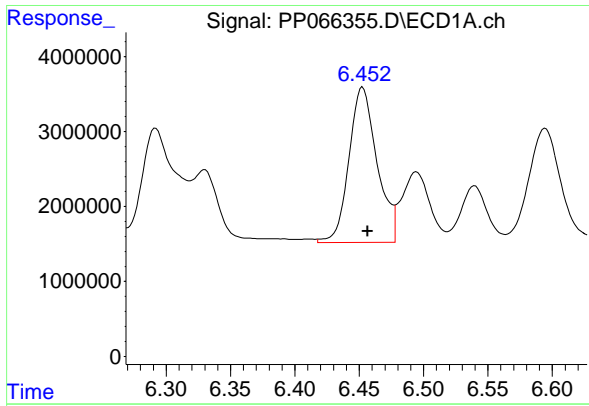
#22 AR-1248-2

R.T.: 6.245 min
 Delta R.T.: -0.004 min
 Response: 28201709
 Conc: 369.44 ng/ml



#22 AR-1248-2

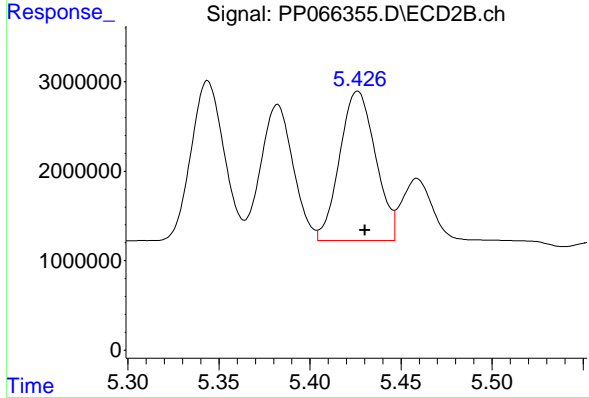
R.T.: 5.382 min
 Delta R.T.: -0.004 min
 Response: 18841584
 Conc: 331.78 ng/ml



#23 AR-1248-3

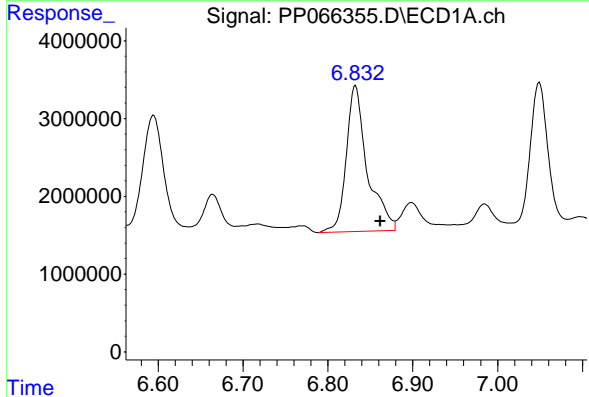
R.T.: 6.453 min
 Delta R.T.: -0.004 min
 Response: 31398374
 Conc: 385.50 ng/ml

Instrument :
 ECD_P
 ClientSampleId :
 PB162083BS



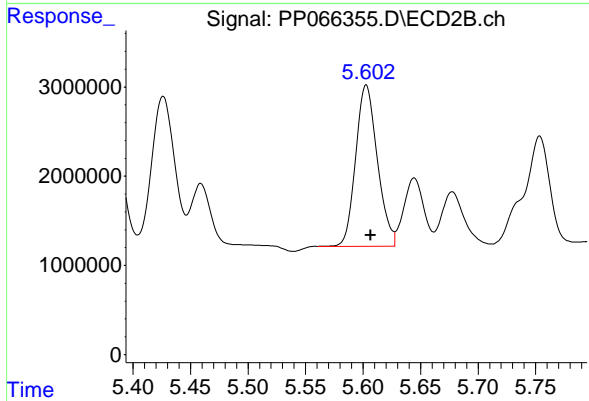
#23 AR-1248-3

R.T.: 5.426 min
 Delta R.T.: -0.004 min
 Response: 22907345
 Conc: 388.48 ng/ml



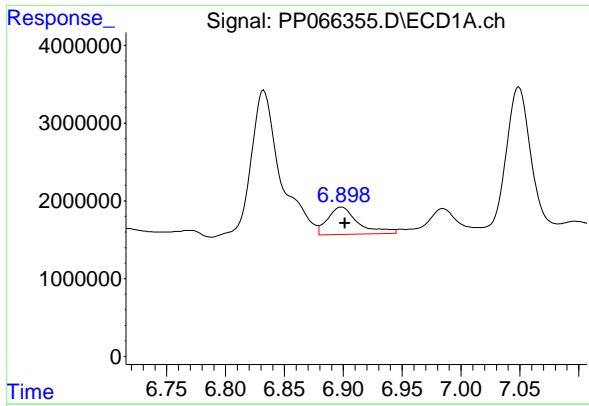
#24 AR-1248-4

R.T.: 6.832 min
 Delta R.T.: -0.029 min
 Response: 32330181
 Conc: 347.10 ng/ml



#24 AR-1248-4

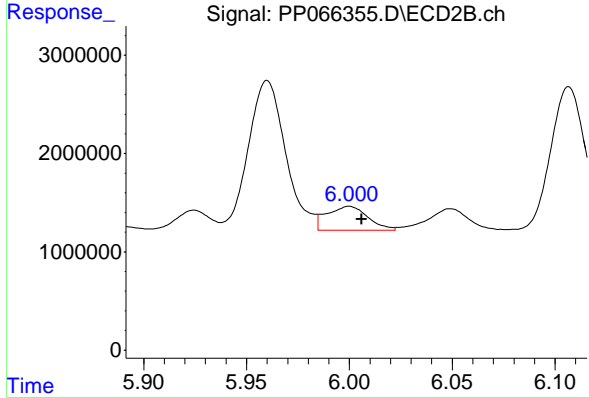
R.T.: 5.603 min
 Delta R.T.: -0.004 min
 Response: 23707751
 Conc: 345.62 ng/ml



#25 AR-1248-5

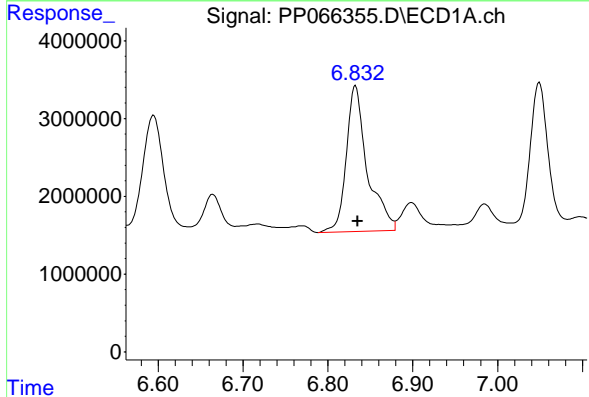
R.T.: 6.899 min
 Delta R.T.: -0.003 min
 Response: 6416602
 Conc: 69.55 ng/ml

Instrument :
 ECD_P
 ClientSampleId :
 PB162083BS



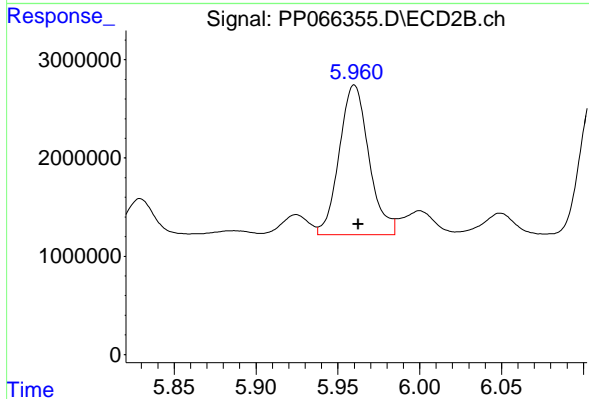
#25 AR-1248-5

R.T.: 6.000 min
 Delta R.T.: -0.006 min
 Response: 3403905
 Conc: 54.28 ng/ml



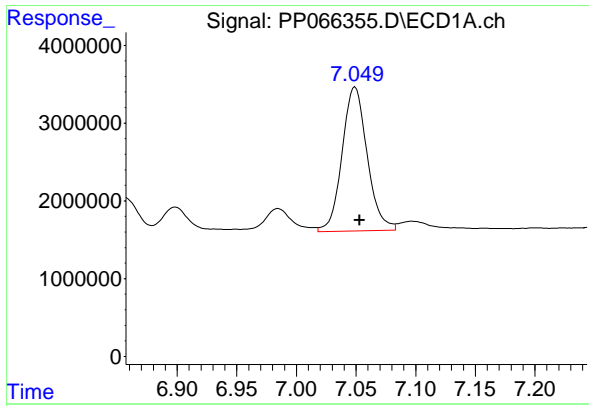
#26 AR-1254-1

R.T.: 6.832 min
 Delta R.T.: -0.003 min
 Response: 32330181
 Conc: 345.70 ng/ml



#26 AR-1254-1

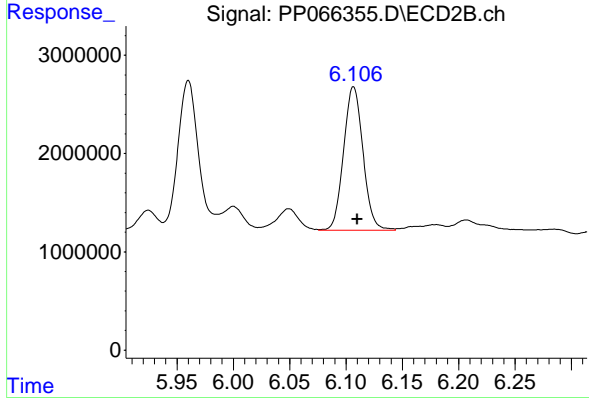
R.T.: 5.960 min
 Delta R.T.: -0.002 min
 Response: 19256100
 Conc: 202.33 ng/ml



#27 AR-1254-2

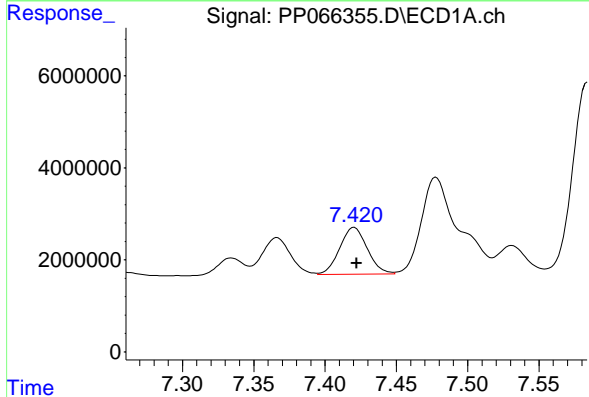
R.T.: 7.049 min
 Delta R.T.: -0.004 min
 Response: 27066658
 Conc: 191.89 ng/ml

Instrument :
 ECD_P
 ClientSampleId :
 PB162083BS



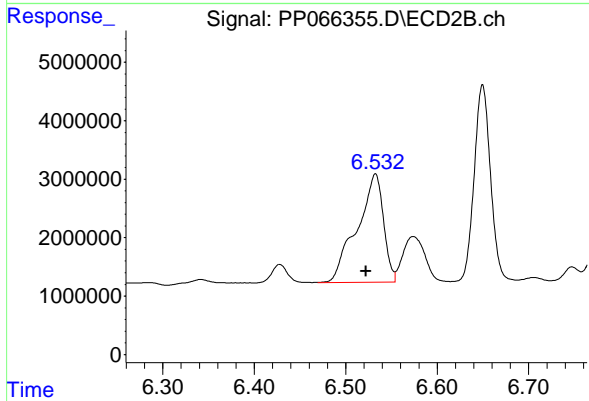
#27 AR-1254-2

R.T.: 6.107 min
 Delta R.T.: -0.004 min
 Response: 17495708
 Conc: 210.66 ng/ml



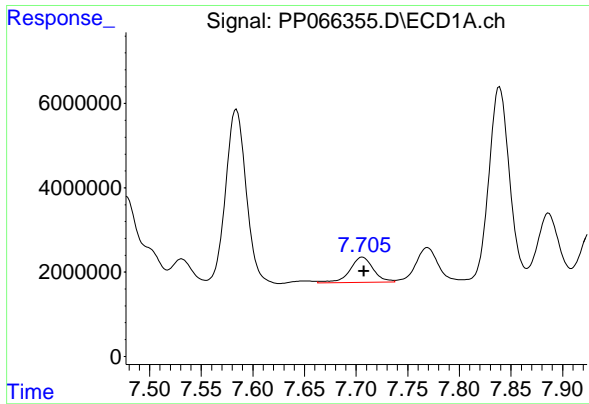
#28 AR-1254-3

R.T.: 7.420 min
 Delta R.T.: -0.002 min
 Response: 13770458
 Conc: 106.17 ng/ml



#28 AR-1254-3

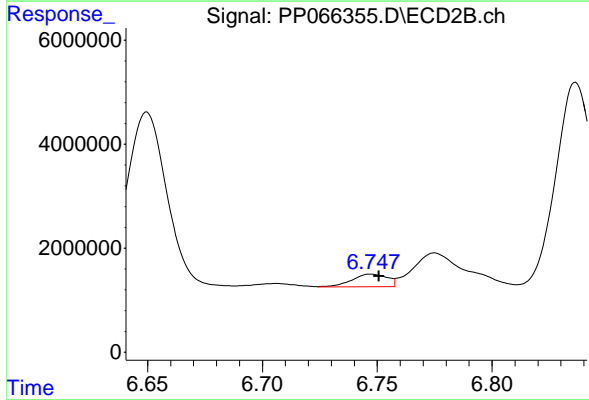
R.T.: 6.532 min
 Delta R.T.: 0.010 min
 Response: 37141371
 Conc: 297.26 ng/ml



#29 AR-1254-4

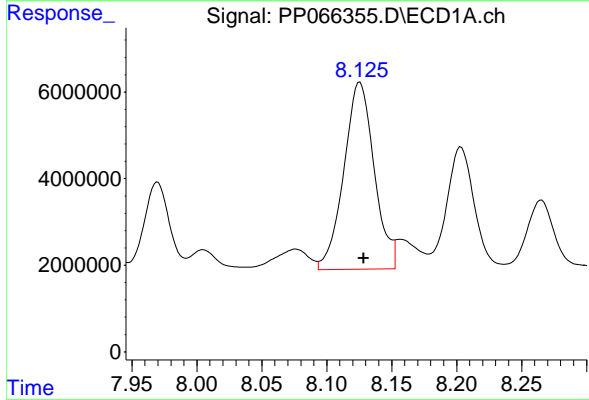
R.T.: 7.706 min
 Delta R.T.: -0.001 min
 Response: 9432351
 Conc: 102.86 ng/ml

Instrument :
 ECD_P
 ClientSampleId :
 PB162083BS



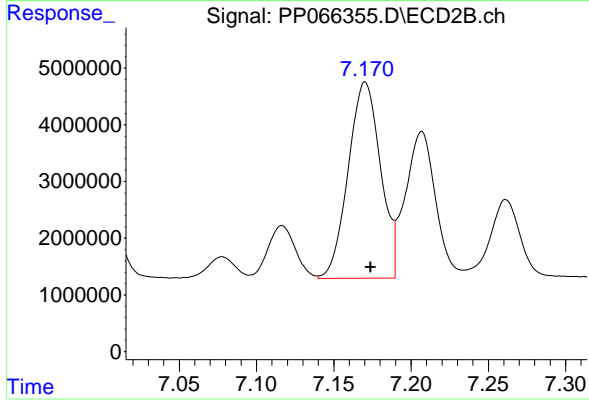
#29 AR-1254-4

R.T.: 6.747 min
 Delta R.T.: -0.003 min
 Response: 2596146
 Conc: 37.94 ng/ml



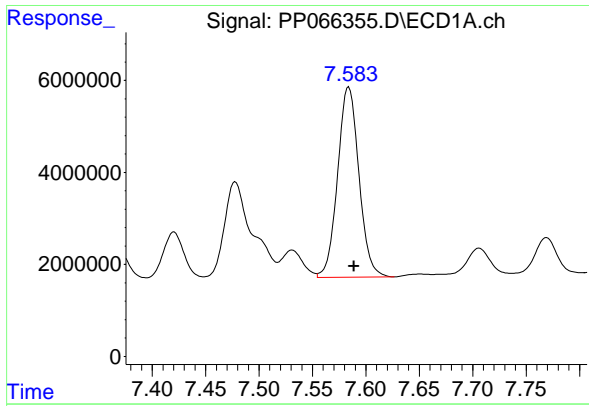
#30 AR-1254-5

R.T.: 8.125 min
 Delta R.T.: -0.003 min
 Response: 70276301
 Conc: 707.05 ng/ml



#30 AR-1254-5

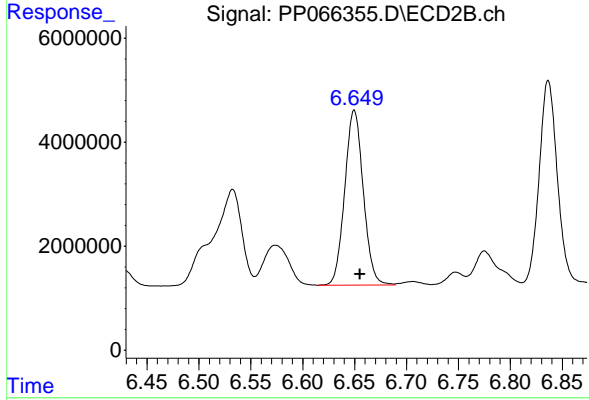
R.T.: 7.170 min
 Delta R.T.: -0.004 min
 Response: 50350049
 Conc: 501.50 ng/ml



#31 AR-1260-1

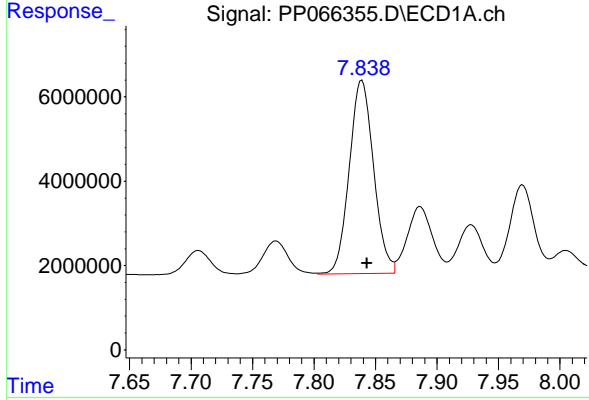
R.T.: 7.584 min
 Delta R.T.: -0.005 min
 Response: 57559966
 Conc: 544.12 ng/ml

Instrument :
 ECD_P
 ClientSampleId :
 PB162083BS



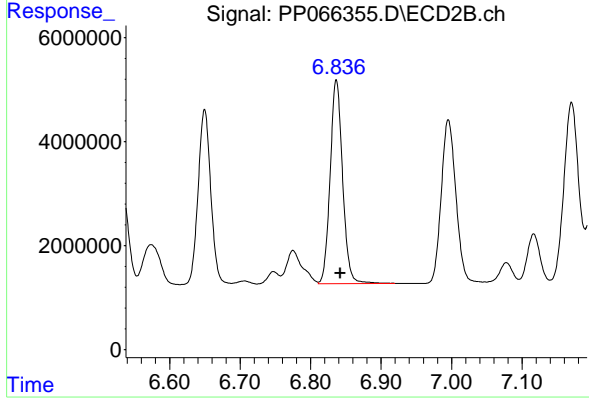
#31 AR-1260-1

R.T.: 6.650 min
 Delta R.T.: -0.005 min
 Response: 41919346
 Conc: 490.34 ng/ml



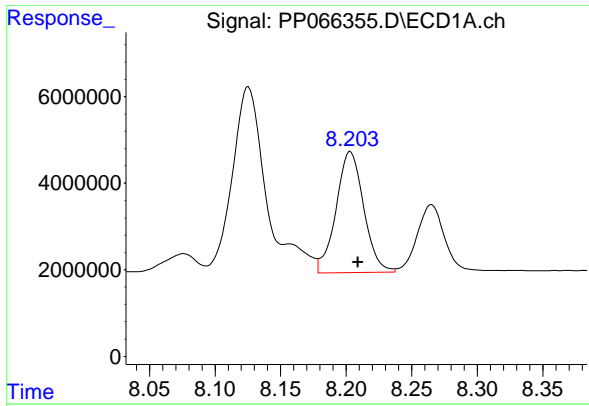
#32 AR-1260-2

R.T.: 7.839 min
 Delta R.T.: -0.004 min
 Response: 63223988
 Conc: 548.78 ng/ml



#32 AR-1260-2

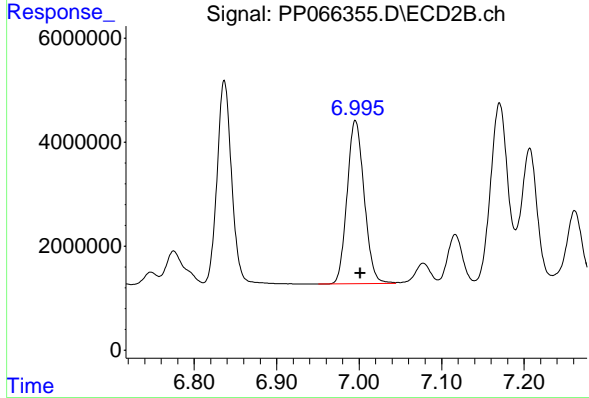
R.T.: 6.836 min
 Delta R.T.: -0.006 min
 Response: 48086049
 Conc: 494.49 ng/ml



#33 AR-1260-3

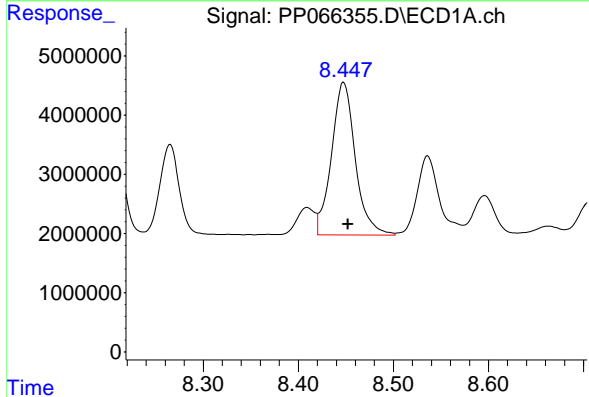
R.T.: 8.203 min
Delta R.T.: -0.006 min
Response: 41018065
Conc: 516.80 ng/ml

Instrument :
ECD_P
ClientSampleId :
PB162083BS



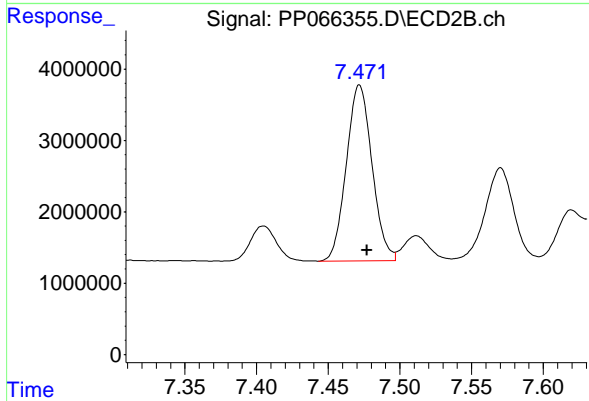
#33 AR-1260-3

R.T.: 6.995 min
Delta R.T.: -0.006 min
Response: 45220465
Conc: 492.88 ng/ml



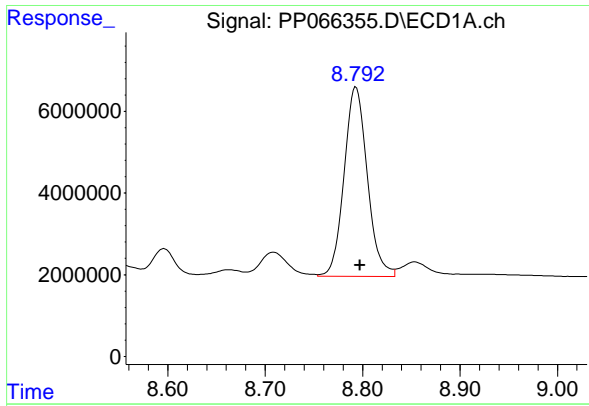
#34 AR-1260-4

R.T.: 8.448 min
Delta R.T.: -0.004 min
Response: 44962431
Conc: 516.29 ng/ml



#34 AR-1260-4

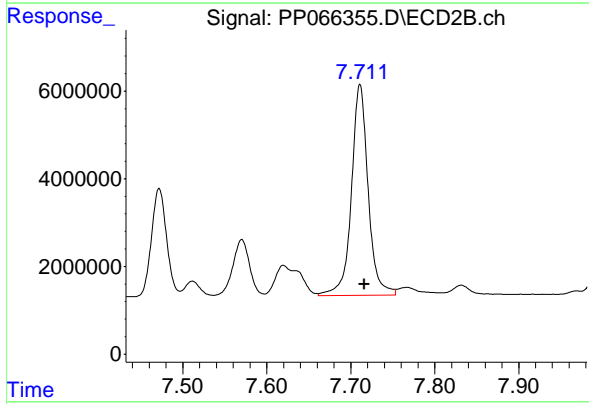
R.T.: 7.472 min
Delta R.T.: -0.005 min
Response: 30779044
Conc: 473.61 ng/ml



#35 AR-1260-5

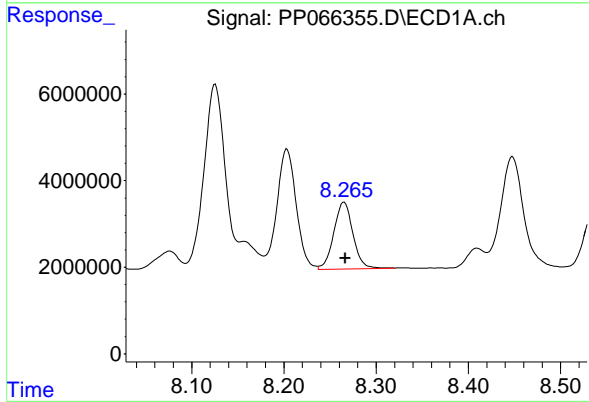
R.T.: 8.793 min
 Delta R.T.: -0.004 min
 Response: 76774663
 Conc: 496.57 ng/ml

Instrument :
 ECD_P
 ClientSampleId :
 PB162083BS



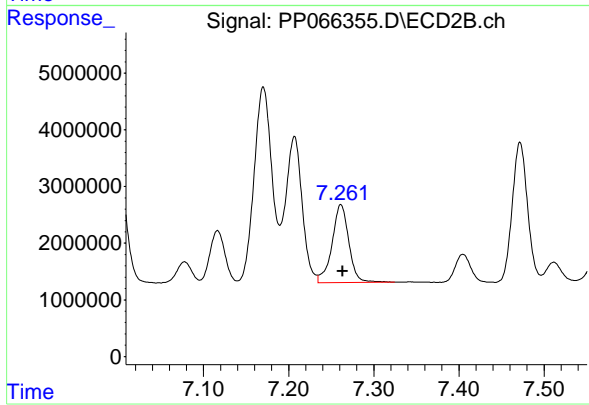
#35 AR-1260-5

R.T.: 7.711 min
 Delta R.T.: -0.005 min
 Response: 66638545
 Conc: 474.06 ng/ml



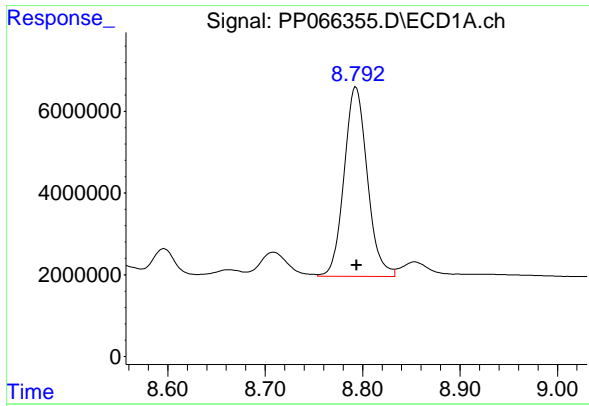
#36 AR-1262-1

R.T.: 8.265 min
 Delta R.T.: -0.001 min
 Response: 22195798
 Conc: 393.69 ng/ml



#36 AR-1262-1

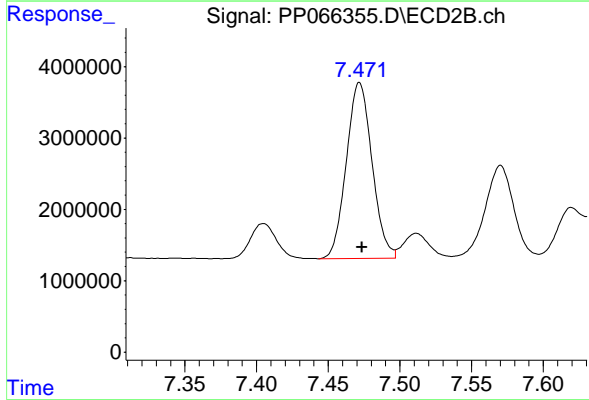
R.T.: 7.261 min
 Delta R.T.: -0.002 min
 Response: 18860435
 Conc: 396.33 ng/ml



#37 AR-1262-2

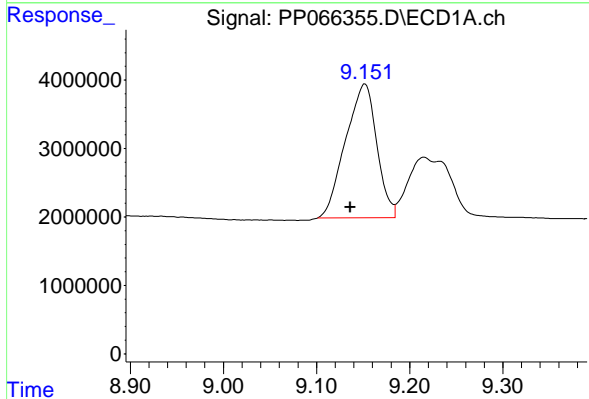
R.T.: 8.793 min
 Delta R.T.: 0.000 min
 Response: 76774663
 Conc: 406.15 ng/ml

Instrument :
 ECD_P
 ClientSampleId :
 PB162083BS



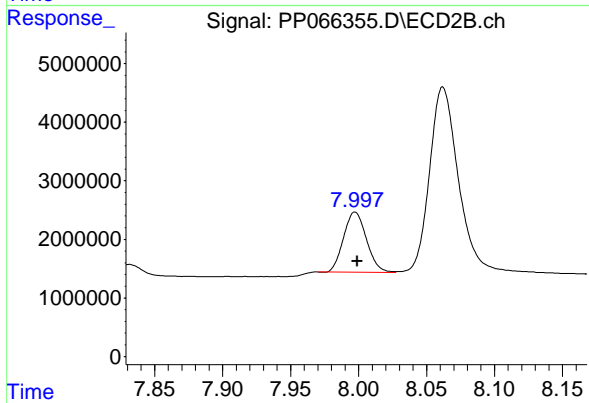
#37 AR-1262-2

R.T.: 7.472 min
 Delta R.T.: -0.002 min
 Response: 30779044
 Conc: 329.01 ng/ml



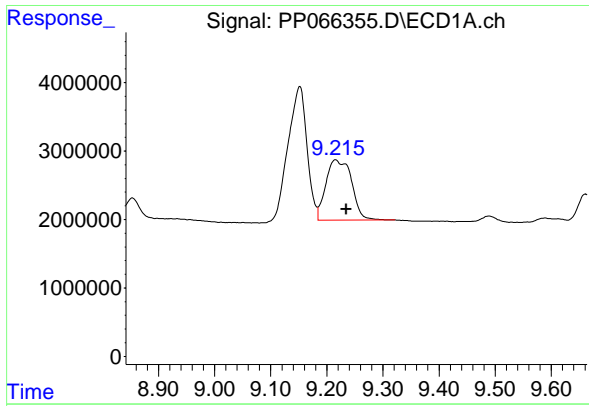
#38 AR-1262-3

R.T.: 9.152 min
 Delta R.T.: 0.016 min
 Response: 45637615
 Conc: 349.66 ng/ml



#38 AR-1262-3

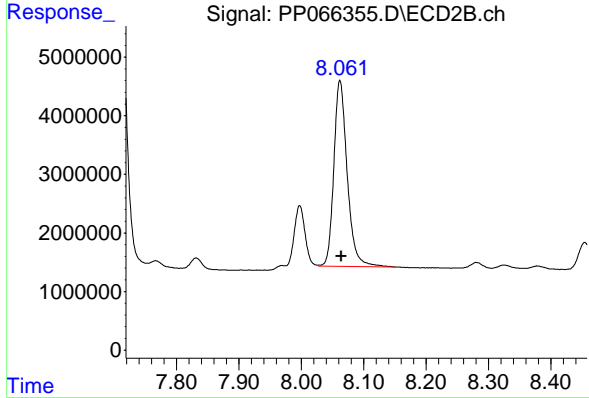
R.T.: 7.997 min
 Delta R.T.: -0.002 min
 Response: 12040503
 Conc: 168.29 ng/ml



#39 AR-1262-4

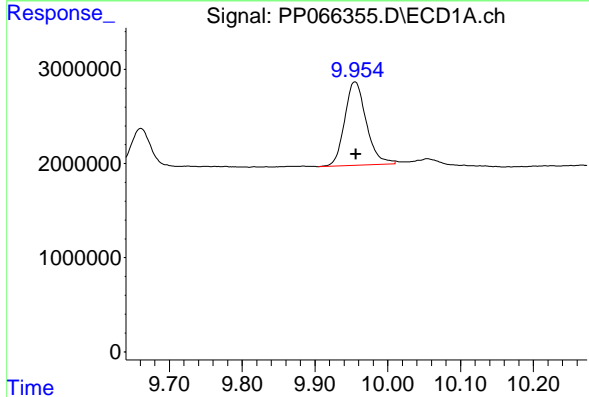
R.T.: 9.216 min
 Delta R.T.: -0.019 min
 Response: 28104683
 Conc: 249.68 ng/ml

Instrument :
 ECD_P
 ClientSampleId :
 PB162083BS



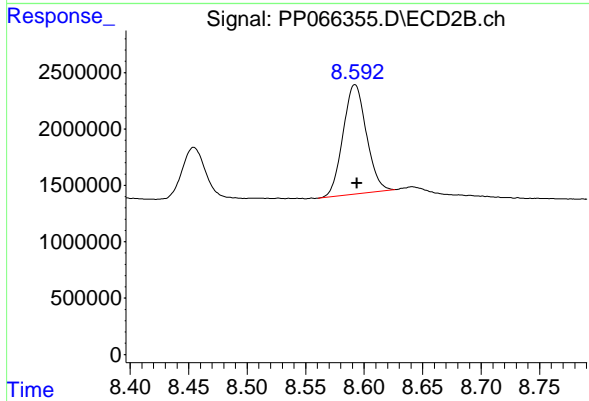
#39 AR-1262-4

R.T.: 8.062 min
 Delta R.T.: -0.003 min
 Response: 47091801
 Conc: 362.94 ng/ml



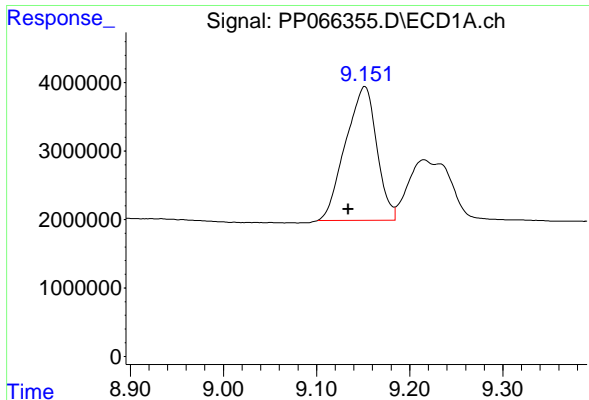
#40 AR-1262-5

R.T.: 9.955 min
 Delta R.T.: 0.000 min
 Response: 18254547
 Conc: 280.35 ng/ml



#40 AR-1262-5

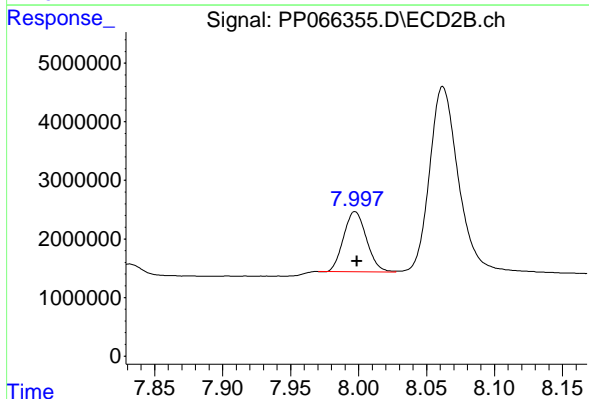
R.T.: 8.592 min
 Delta R.T.: -0.002 min
 Response: 13461456
 Conc: 224.91 ng/ml



#41 AR-1268-1

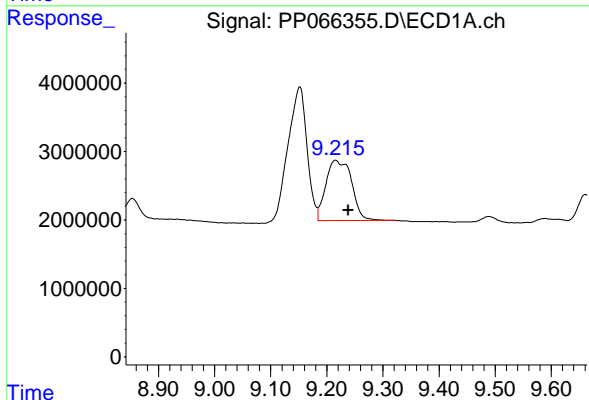
R.T.: 9.152 min
 Delta R.T.: 0.018 min
 Response: 45637615
 Conc: 195.17 ng/ml

Instrument :
 ECD_P
 ClientSampleId :
 PB162083BS



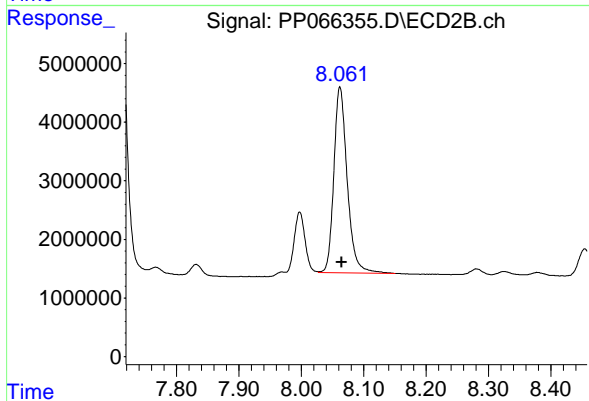
#41 AR-1268-1

R.T.: 7.997 min
 Delta R.T.: -0.001 min
 Response: 12040503
 Conc: 59.78 ng/ml



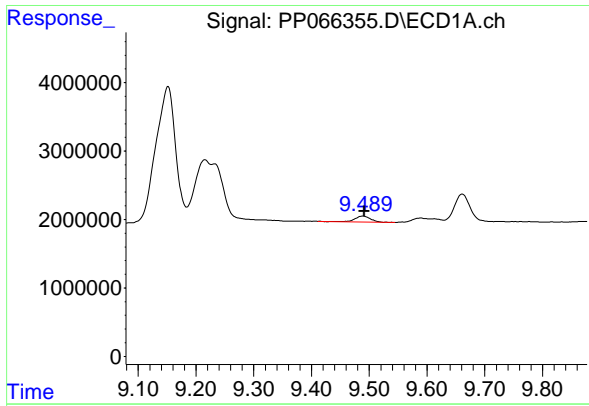
#42 AR-1268-2

R.T.: 9.216 min
 Delta R.T.: -0.022 min
 Response: 28104683
 Conc: 131.72 ng/ml



#42 AR-1268-2

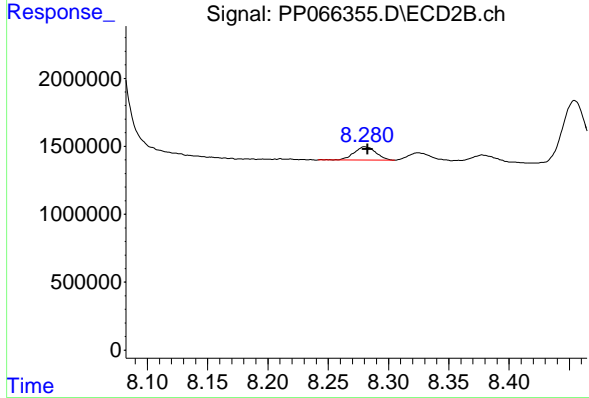
R.T.: 8.062 min
 Delta R.T.: -0.003 min
 Response: 47091801
 Conc: 255.80 ng/ml



#43 AR-1268-3

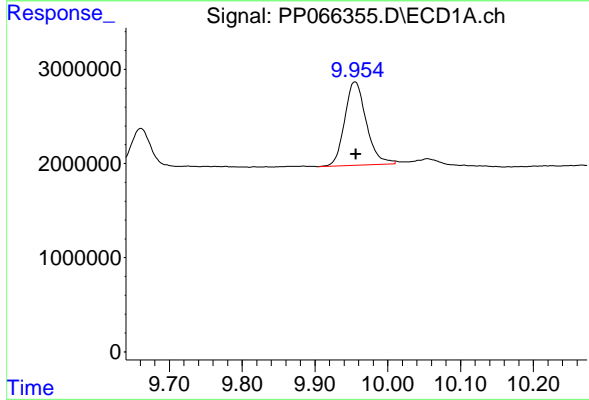
R.T.: 9.489 min
 Delta R.T.: -0.002 min
 Response: 1576132
 Conc: 8.23 ng/ml

Instrument :
 ECD_P
 ClientSampleId :
 PB162083BS



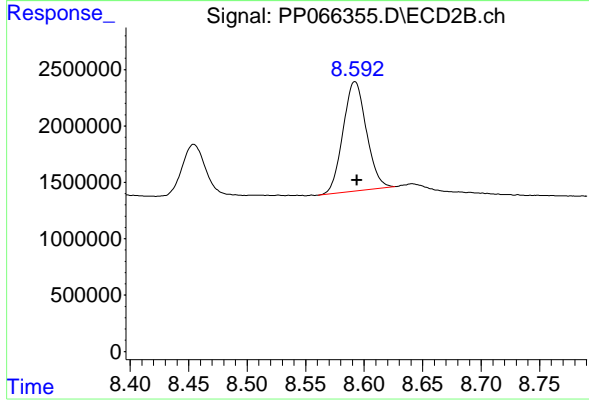
#43 AR-1268-3

R.T.: 8.280 min
 Delta R.T.: -0.002 min
 Response: 1239300
 Conc: 7.66 ng/ml



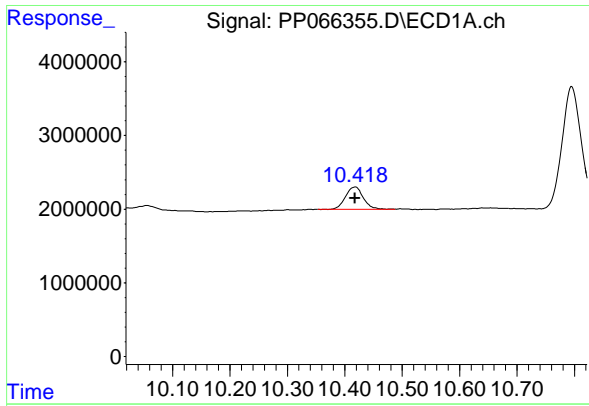
#44 AR-1268-4

R.T.: 9.955 min
 Delta R.T.: -0.001 min
 Response: 18254547
 Conc: 261.73 ng/ml



#44 AR-1268-4

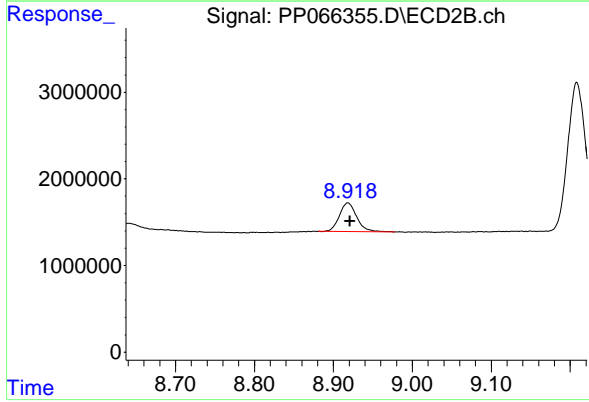
R.T.: 8.592 min
 Delta R.T.: -0.002 min
 Response: 13461456
 Conc: 199.94 ng/ml



#45 AR-1268-5

R.T.: 10.418 min
Delta R.T.: 0.000 min
Response: 6562129
Conc: 10.73 ng/ml

Instrument :
ECD_P
ClientSampleId :
PB162083BS



#45 AR-1268-5

R.T.: 8.918 min
Delta R.T.: -0.003 min
Response: 5073048
Conc: 10.58 ng/ml