

Data Path : Z:\pestpcbsrv\HPCHEM1\ECD_P\Data\PP071724\
 Data File : PP066380.D
 Signal(s) : Signal #1: ECD1A.ch Signal #2: ECD2B.ch
 Acq On : 17 Jul 2024 18:30
 Operator : YP\AJ
 Sample : AR1248CCC500
 Misc :
 ALS Vial : 5 Sample Multiplier: 1

Instrument :
 ECD_P
 ClientSampleId :
 AR1248CCC500

Integration File signal 1: autoint1.e
 Integration File signal 2: autoint2.e
 Quant Time: Jul 18 01:51:42 2024
 Quant Method : Z:\pestpcbsrv\HPCHEM1\ECD_P\methods\PP071624.M
 Quant Title : GC EXTRACTABLES
 QLast Update : Wed Jul 17 07:20:03 2024
 Response via : Initial Calibration
 Integrator: ChemStation

Volume Inj. : 2 µl
 Signal #1 Phase : ZB-MR1 Signal #2 Phase: ZB-MR2
 Signal #1 Info : 30Mx0.32mmx 0.50µ Signal #2 Info : 30M x 0.32mm x 0.25µm

Compound	RT#1	RT#2	Resp#1	Resp#2	ng/ml	ng/ml

System Monitoring Compounds						
1) SA Tetrachlo...	4.794	4.032	102.3E6	104.6E6	58.067	54.755
2) SA Decachlor...	10.800	9.211	90525216	64340520	51.575	50.425
Target Compounds						
3) L1 AR-1016-1	5.975	5.145	23559476	20513861	321.445	327.460
4) L1 AR-1016-2	5.999	5.165	28633805	21005624	261.836	236.008
5) L1 AR-1016-3	6.061	5.349	13991599	13643942	207.278	289.010 #
6) L1 AR-1016-4	6.161	5.385	16026891	27665215	288.748	724.976 #
7) L1 AR-1016-5	6.458	5.606	39384615	32812624	708.363	677.008
9) L2 AR-1221-2	5.105f	4.342	1636207	1851652	97.481	107.268
10) L2 AR-1221-3	5.167	4.416	1745791	1876080	34.078	37.111
11) L3 AR-1232-1	5.167	4.416	1745791	1876080	39.897	43.956
12) L3 AR-1232-2	5.705	5.145	10592342	20513861	409.927	695.559 #
13) L3 AR-1232-3	5.975	5.349	23559476	13643942	696.654	612.598
14) L3 AR-1232-4	6.161	5.429	16026891	28606322	618.289	1422.752 #
15) L3 AR-1232-5	6.249	5.606	36484708	32812624	1682.813	1540.486
16) L4 AR-1242-1	5.975	5.145	23559476	20513861	424.430	392.451
17) L4 AR-1242-2	5.999	5.165	28633805	21005624	319.966	290.809
18) L4 AR-1242-3	6.061	5.349	13991599	13643942	254.886	356.599 #
19) L4 AR-1242-4	6.161	5.429	16026891	28606322	350.021	753.694 #
20) L4 AR-1242-5	6.902	5.962	41962049	42168016	843.633	934.717
21) L5 AR-1248-1	5.975	5.145	23559476	20513861	483.383	497.906
22) L5 AR-1248-2	6.249	5.385	36484708	27665215	477.952	487.154
23) L5 AR-1248-3	6.458	5.429	39384615	28606322	483.556	485.133
24) L5 AR-1248-4	6.862	5.606	42688848	32812624	458.313	478.360
25) L5 AR-1248-5	6.902	6.005	41962049	29125237	454.812	464.400
26) L6 AR-1254-1	6.836	5.962	33274631	42168016	355.802	443.081
27) L6 AR-1254-2	7.060	6.110	41718257	13012153	295.759	156.676 #
28) L6 AR-1254-3	7.424	6.522	20925191	17910779	161.340	143.350
29) L6 AR-1254-4	7.709	6.751	13909882	11939074	151.692	174.485
30) L6 AR-1254-5	8.131	7.174	3833354	3473312	38.567	34.595
31) L7 AR-1260-1	7.590	6.672	2808234	8985584	26.546	105.107 #
32) L7 AR-1260-2	7.840	6.839	3990964	1778353	34.641	18.288 #
33) L7 AR-1260-3	8.201	6.998	712553	1969848	8.978	21.470 #
34) L7 AR-1260-4	8.441	0.000	1494086	0	17.156	N.D. #
35) L7 AR-1260-5	8.797	7.713	896637	807567	5.799	5.745
36) L8 AR-1262-1	8.266	0.000	397693	0	7.054	N.D. #
37) L8 AR-1262-2	8.797	0.000	896637	0	4.743	N.D. #
38) L8 AR-1262-3	9.156f	0.000	613077	0	4.697	N.D. #
39) L8 AR-1262-4	9.227	0.000	634027	0	5.633	N.D. #
40) L8 AR-1262-5	9.949	0.000	55859	0	0.858	N.D. #
41) L9 AR-1268-1	9.156f	0.000	613077	0	2.622	N.D. #
42) L9 AR-1268-2	9.227	0.000	634027	0	2.971	N.D. #

Data Path : Z:\pestpcbsrv\HPCHEM1\ECD_P\Data\PP071724\
 Data File : PP066380.D
 Signal(s) : Signal #1: ECD1A.ch Signal #2: ECD2B.ch
 Acq On : 17 Jul 2024 18:30
 Operator : YP\AJ
 Sample : AR1248CCC500
 Misc :
 ALS Vial : 5 Sample Multiplier: 1

Instrument :
 ECD_P
 ClientSampleId :
 AR1248CCC500

Integration File signal 1: autoint1.e
 Integration File signal 2: autoint2.e
 Quant Time: Jul 18 01:51:42 2024
 Quant Method : Z:\pestpcbsrv\HPCHEM1\ECD_P\methods\PP071624.M
 Quant Title : GC EXTRACTABLES
 QLast Update : Wed Jul 17 07:20:03 2024
 Response via : Initial Calibration
 Integrator: ChemStation

Volume Inj. : 2 µl
 Signal #1 Phase : ZB-MR1 Signal #2 Phase: ZB-MR2
 Signal #1 Info : 30Mx0.32mmx 0.50µ Signal #2 Info : 30M x 0.32mm x 0.25µm

	Compound	RT#1	RT#2	Resp#1	Resp#2	ng/ml	ng/ml	
43)	L9 AR-1268-3	9.496	0.000	434332	0	2.267	N.D.	#
44)	L9 AR-1268-4	9.949	0.000	55859	0	0.801	N.D.	#
45)	L9 AR-1268-5	10.415	0.000	263201	0	0.430	N.D.	#

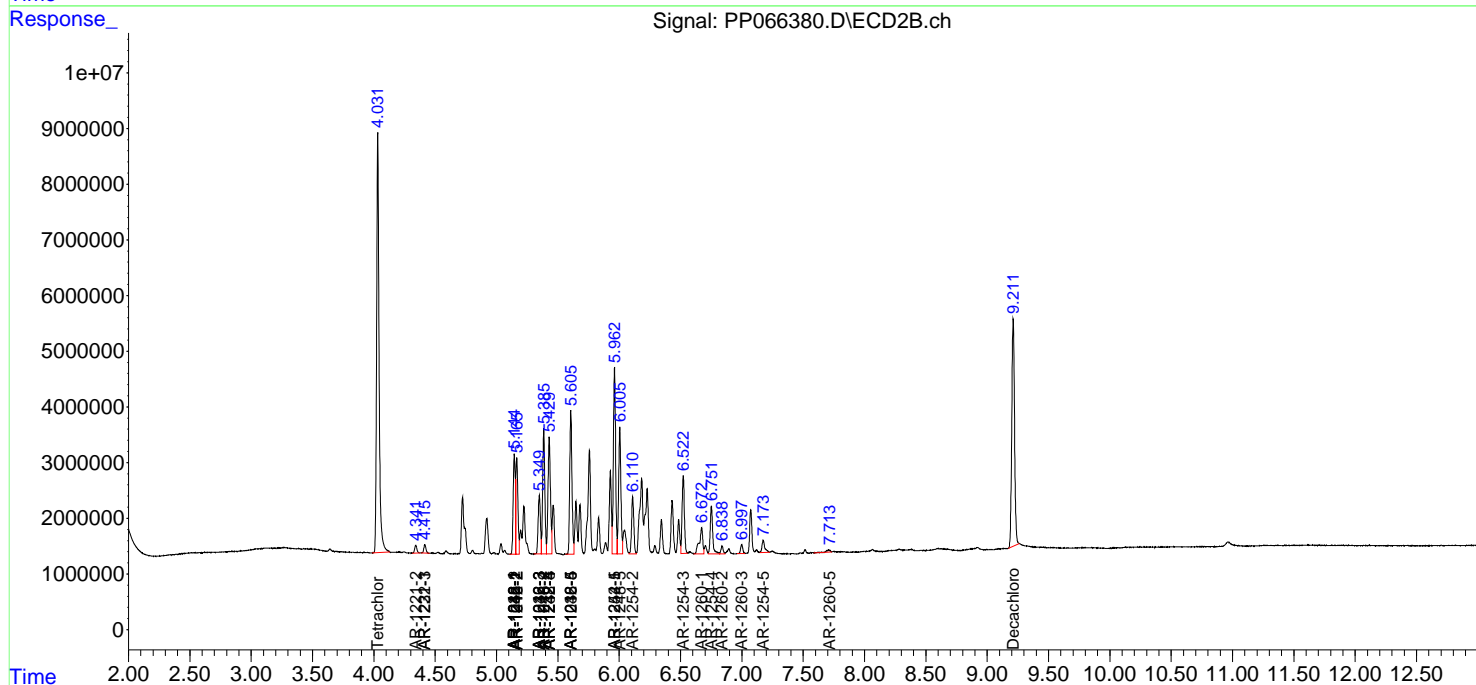
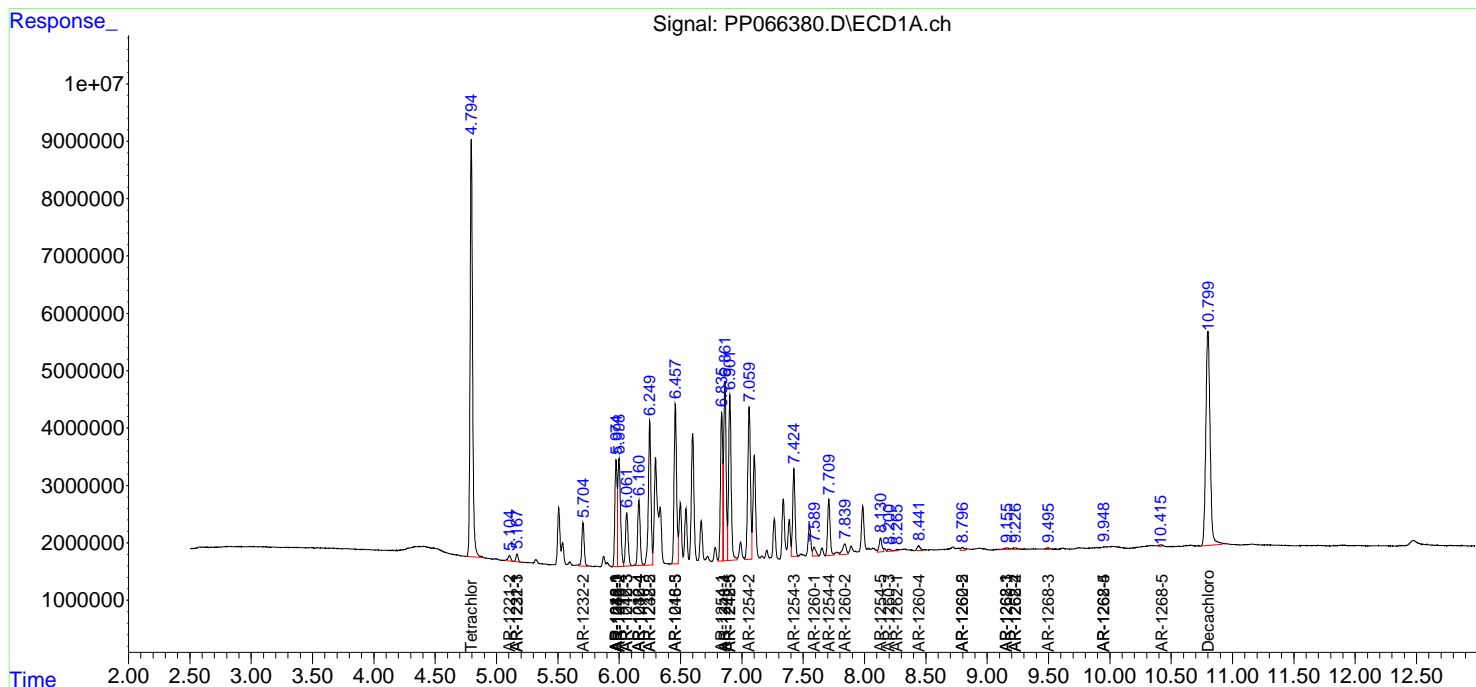
(f)=RT Delta > 1/2 Window (#)=Amounts differ by > 25% (m)=manual int.

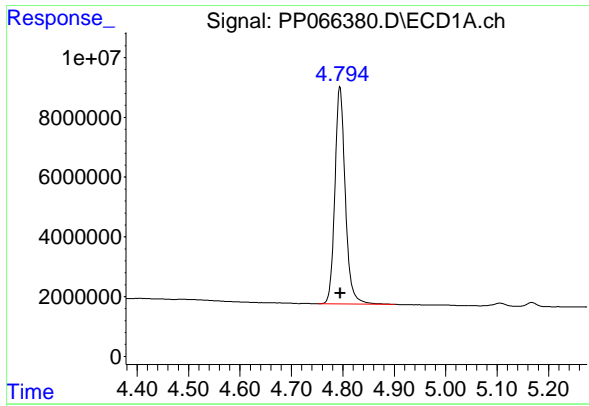
Data Path : Z:\pestpcbsrv\HPCHEM1\ECD_P\Data\PP071724\
 Data File : PP066380.D
 Signal(s) : Signal #1: ECD1A.ch Signal #2: ECD2B.ch
 Acq On : 17 Jul 2024 18:30
 Operator : YP\AJ
 Sample : AR1248CCC500
 Misc :
 ALS Vial : 5 Sample Multiplier: 1

Instrument :
 ECD_P
 ClientSampleId :
 AR1248CCC500

Integration File signal 1: autoint1.e
 Integration File signal 2: autoint2.e
 Quant Time: Jul 18 01:51:42 2024
 Quant Method : Z:\pestpcbsrv\HPCHEM1\ECD_P\methods\PP071624.M
 Quant Title : GC EXTRACTABLES
 QLast Update : Wed Jul 17 07:20:03 2024
 Response via : Initial Calibration
 Integrator: ChemStation

Volume Inj. : 2 µl
 Signal #1 Phase : ZB-MR1 Signal #2 Phase: ZB-MR2
 Signal #1 Info : 30Mx0.32mmx 0.50µ Signal #2 Info : 30M x 0.32mm x 0.25µm

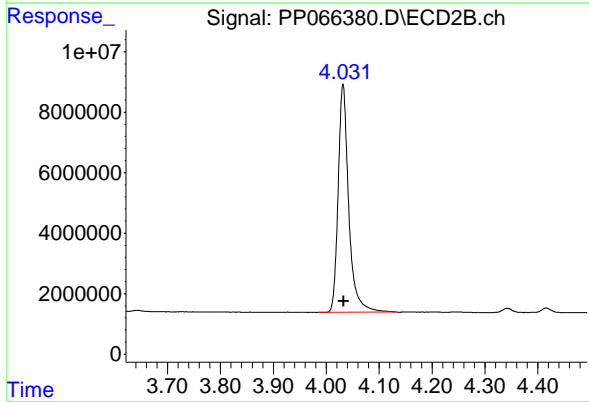




#1 Tetrachloro-m-xylene

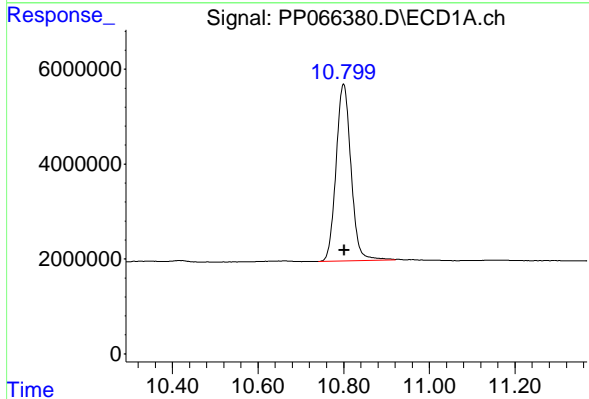
R.T.: 4.794 min
Delta R.T.: 0.000 min
Response: 102302033
Conc: 58.07 ng/ml

Instrument :
ECD_P
ClientSampleId :
AR1248CCC500



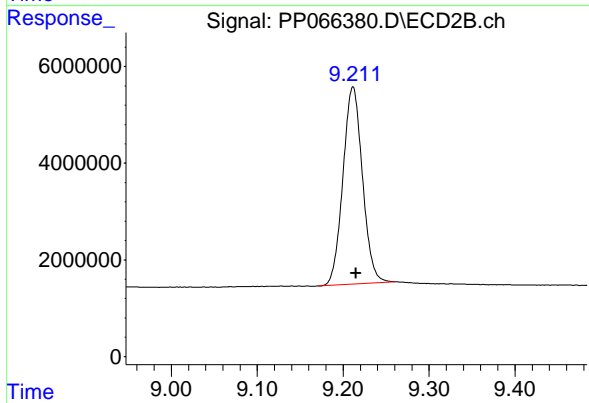
#1 Tetrachloro-m-xylene

R.T.: 4.032 min
Delta R.T.: -0.001 min
Response: 104558666
Conc: 54.76 ng/ml



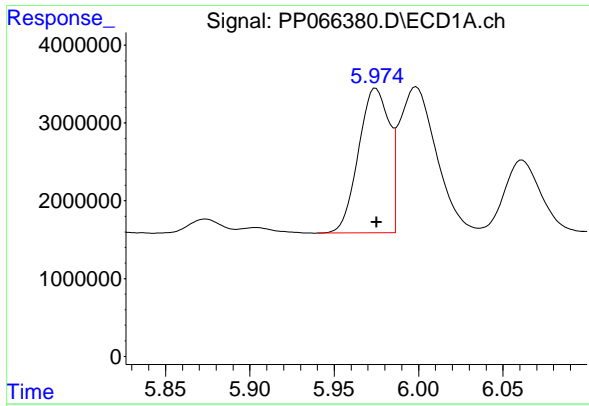
#2 Decachlorobiphenyl

R.T.: 10.800 min
Delta R.T.: -0.001 min
Response: 90525216
Conc: 51.57 ng/ml



#2 Decachlorobiphenyl

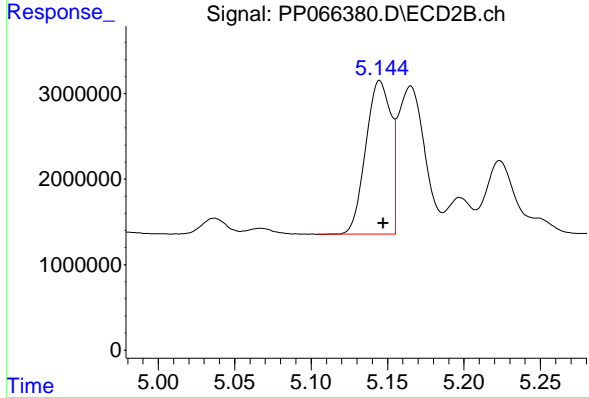
R.T.: 9.211 min
Delta R.T.: -0.003 min
Response: 64340520
Conc: 50.42 ng/ml



#3 AR-1016-1

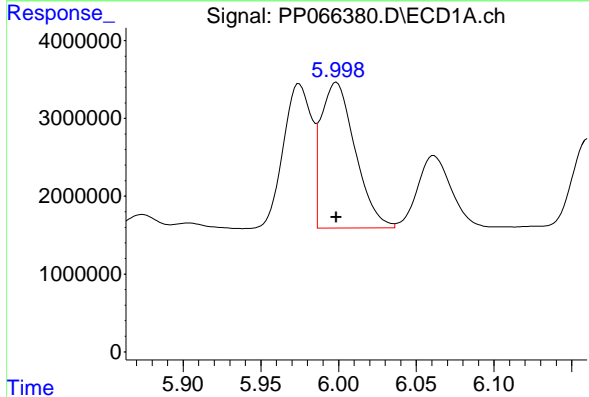
R.T.: 5.975 min
 Delta R.T.: 0.000 min
 Response: 23559476
 Conc: 321.44 ng/ml

Instrument :
 ECD_P
 ClientSampleId :
 AR1248CCC500



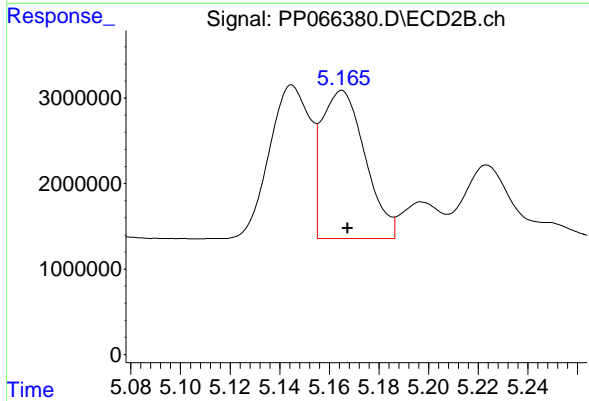
#3 AR-1016-1

R.T.: 5.145 min
 Delta R.T.: -0.002 min
 Response: 20513861
 Conc: 327.46 ng/ml



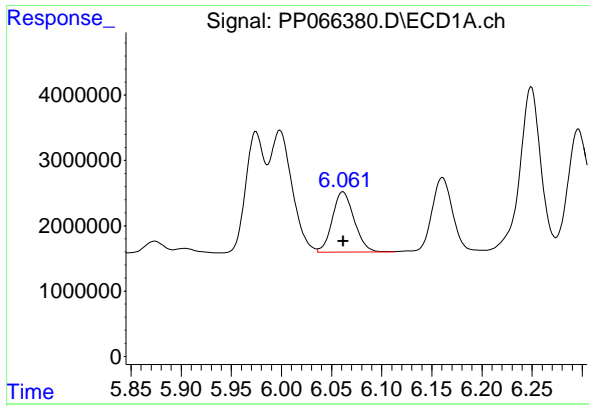
#4 AR-1016-2

R.T.: 5.999 min
 Delta R.T.: 0.000 min
 Response: 28633805
 Conc: 261.84 ng/ml



#4 AR-1016-2

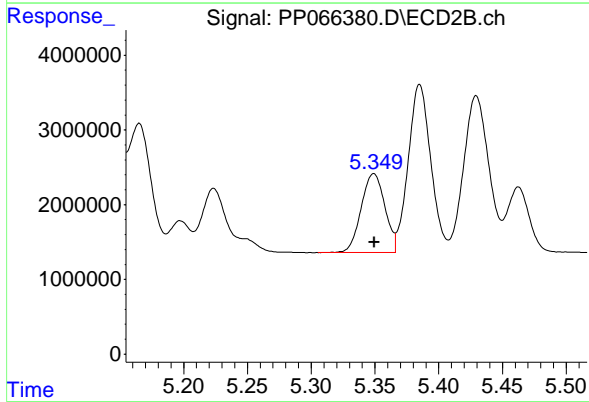
R.T.: 5.165 min
 Delta R.T.: -0.002 min
 Response: 21005624
 Conc: 236.01 ng/ml



#5 AR-1016-3

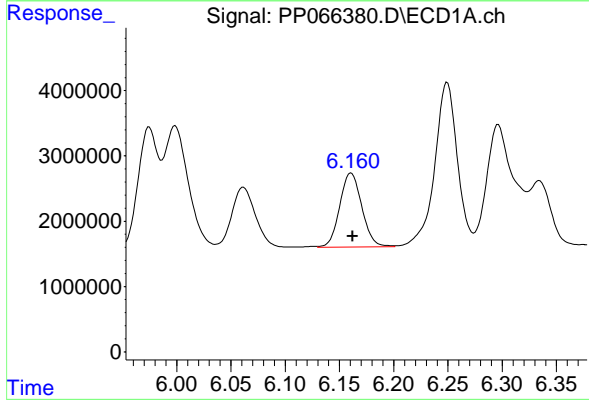
R.T.: 6.061 min
 Delta R.T.: 0.000 min
 Response: 13991599
 Conc: 207.28 ng/ml

Instrument :
 ECD_P
 ClientSampleId :
 AR1248CCC500



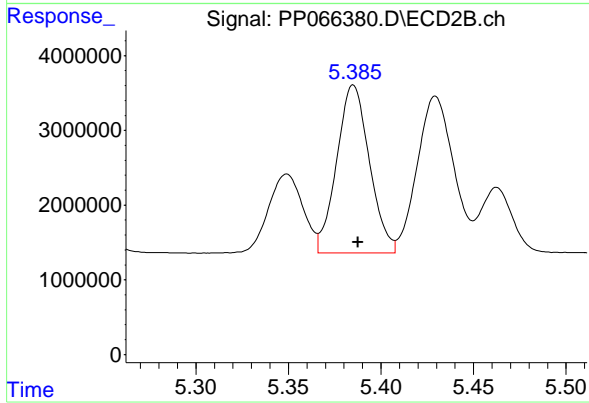
#5 AR-1016-3

R.T.: 5.349 min
 Delta R.T.: 0.000 min
 Response: 13643942
 Conc: 289.01 ng/ml



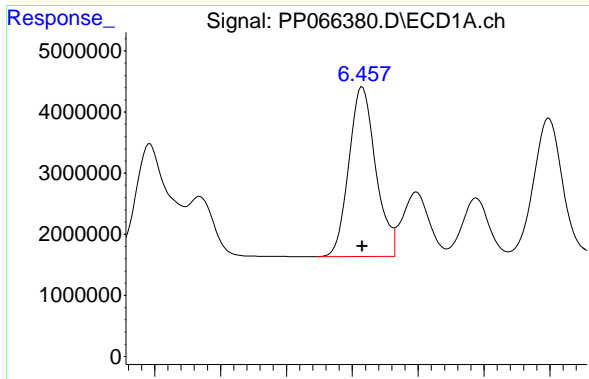
#6 AR-1016-4

R.T.: 6.161 min
 Delta R.T.: -0.001 min
 Response: 16026891
 Conc: 288.75 ng/ml



#6 AR-1016-4

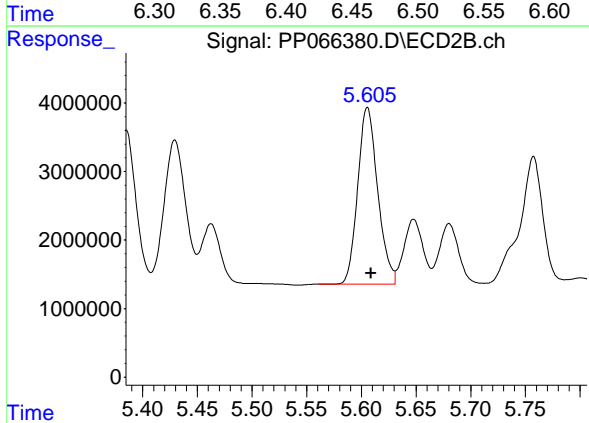
R.T.: 5.385 min
 Delta R.T.: -0.003 min
 Response: 27665215
 Conc: 724.98 ng/ml



#7 AR-1016-5

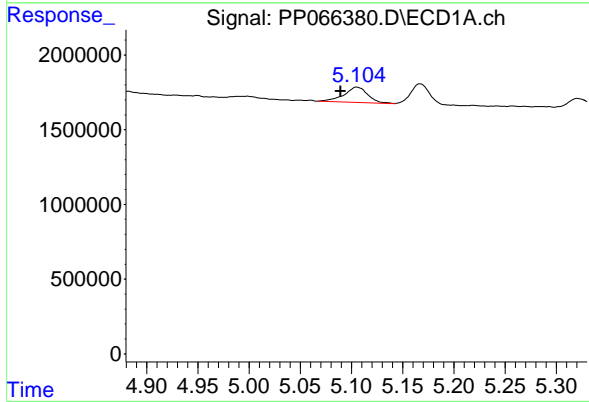
R.T.: 6.458 min
 Delta R.T.: 0.000 min
 Response: 39384615
 Conc: 708.36 ng/ml

Instrument : ECD_P
 ClientSampleId : AR1248CCC500



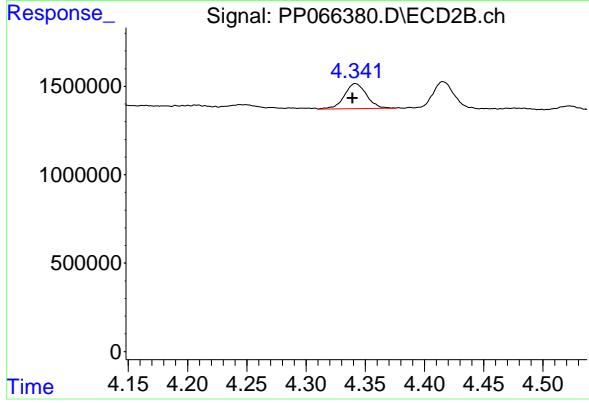
#7 AR-1016-5

R.T.: 5.606 min
 Delta R.T.: -0.003 min
 Response: 32812624
 Conc: 677.01 ng/ml



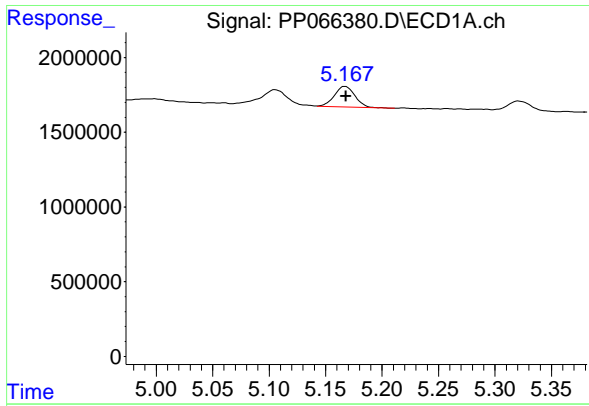
#9 AR-1221-2

R.T.: 5.105 min
 Delta R.T.: 0.016 min
 Response: 1636207
 Conc: 97.48 ng/ml



#9 AR-1221-2

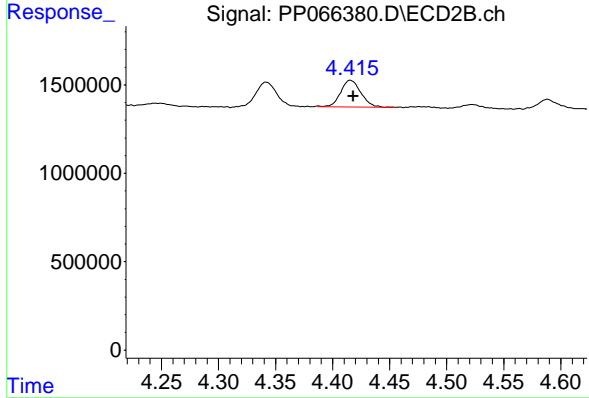
R.T.: 4.342 min
 Delta R.T.: 0.003 min
 Response: 1851652
 Conc: 107.27 ng/ml



#10 AR-1221-3

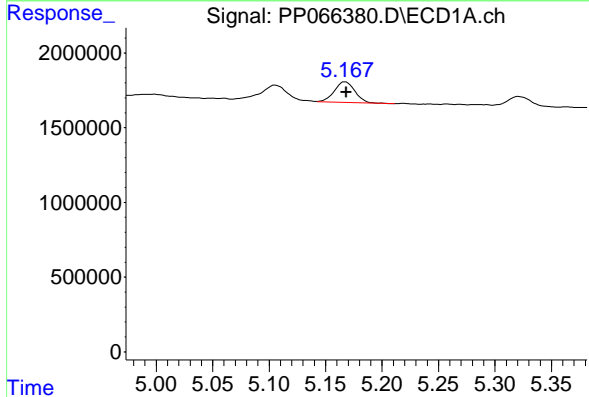
R.T.: 5.167 min
 Delta R.T.: 0.000 min
 Response: 1745791
 Conc: 34.08 ng/ml

Instrument : ECD_P
 ClientSampleId : AR1248CCC500



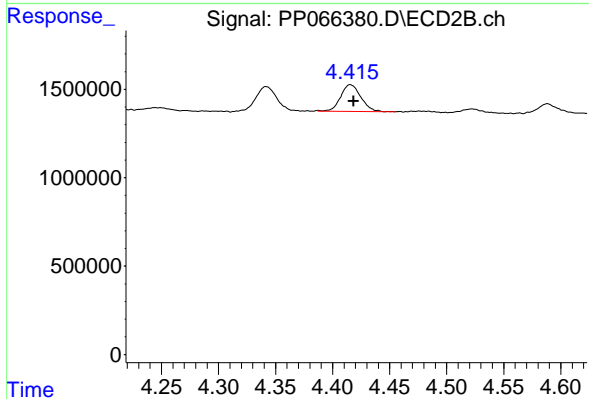
#10 AR-1221-3

R.T.: 4.416 min
 Delta R.T.: -0.002 min
 Response: 1876080
 Conc: 37.11 ng/ml



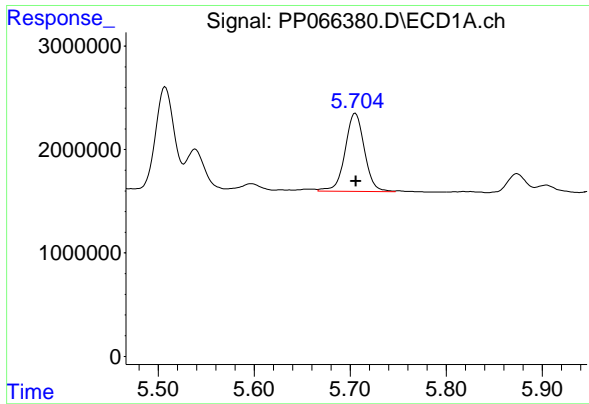
#11 AR-1232-1

R.T.: 5.167 min
 Delta R.T.: -0.001 min
 Response: 1745791
 Conc: 39.90 ng/ml



#11 AR-1232-1

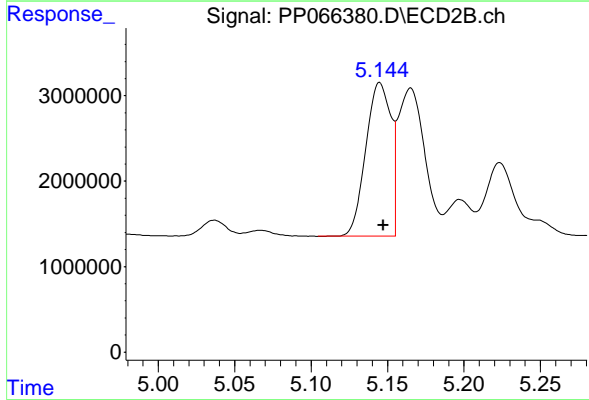
R.T.: 4.416 min
 Delta R.T.: -0.003 min
 Response: 1876080
 Conc: 43.96 ng/ml



#12 AR-1232-2

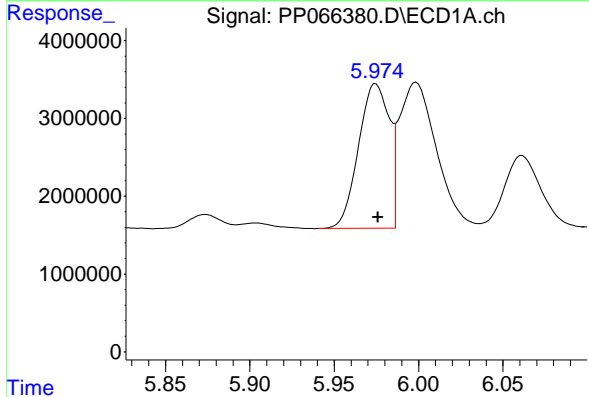
R.T.: 5.705 min
 Delta R.T.: 0.000 min
 Response: 10592342
 Conc: 409.93 ng/ml

Instrument :
 ECD_P
 ClientSampleId :
 AR1248CCC500



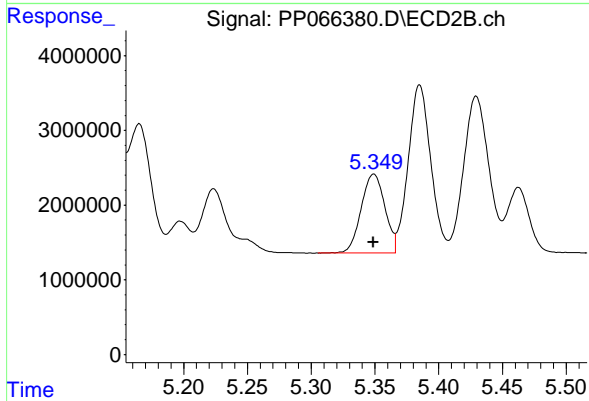
#12 AR-1232-2

R.T.: 5.145 min
 Delta R.T.: -0.002 min
 Response: 20513861
 Conc: 695.56 ng/ml



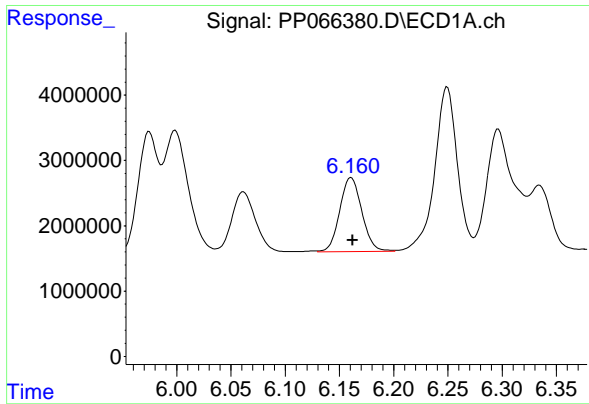
#13 AR-1232-3

R.T.: 5.975 min
 Delta R.T.: -0.001 min
 Response: 23559476
 Conc: 696.65 ng/ml



#13 AR-1232-3

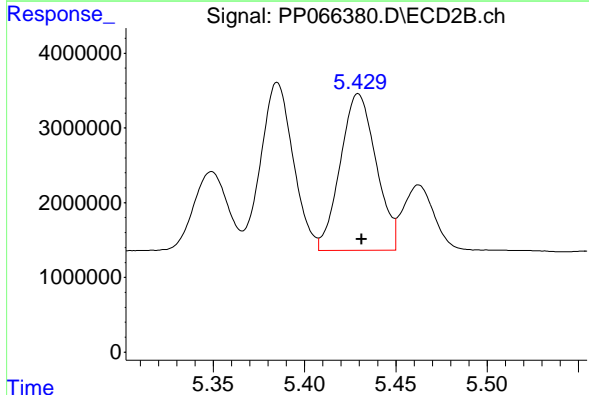
R.T.: 5.349 min
 Delta R.T.: 0.000 min
 Response: 13643942
 Conc: 612.60 ng/ml



#14 AR-1232-4

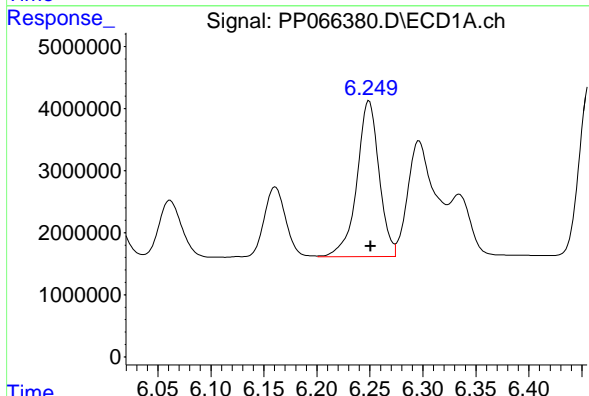
R.T.: 6.161 min
 Delta R.T.: -0.001 min
 Response: 16026891
 Conc: 618.29 ng/ml

Instrument :
 ECD_P
 ClientSampleId :
 AR1248CCC500



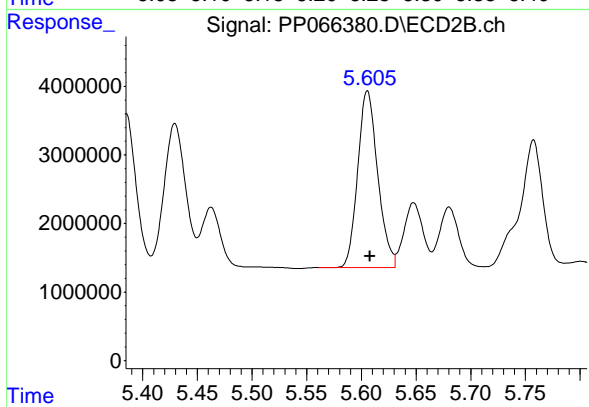
#14 AR-1232-4

R.T.: 5.429 min
 Delta R.T.: -0.002 min
 Response: 28606322
 Conc: 1422.75 ng/ml



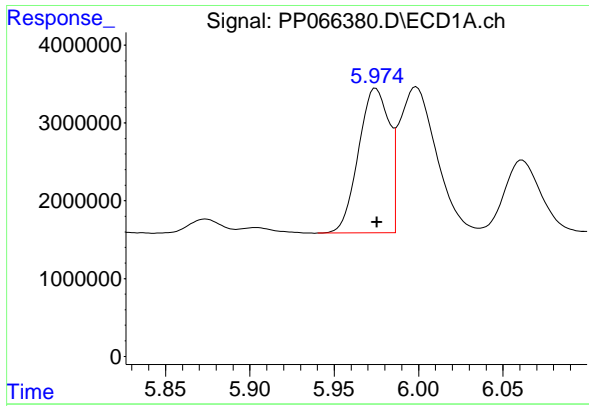
#15 AR-1232-5

R.T.: 6.249 min
 Delta R.T.: -0.001 min
 Response: 36484708
 Conc: 1682.81 ng/ml



#15 AR-1232-5

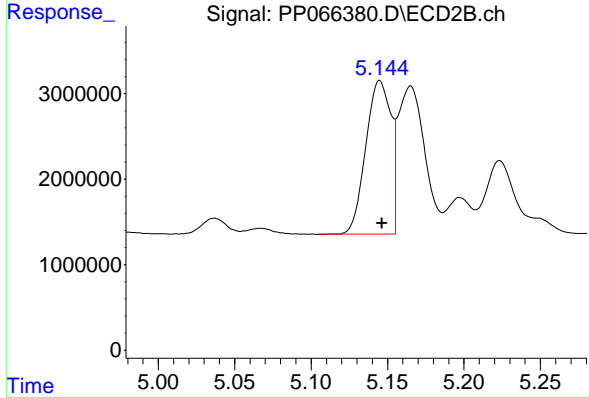
R.T.: 5.606 min
 Delta R.T.: -0.002 min
 Response: 32812624
 Conc: 1540.49 ng/ml



#16 AR-1242-1

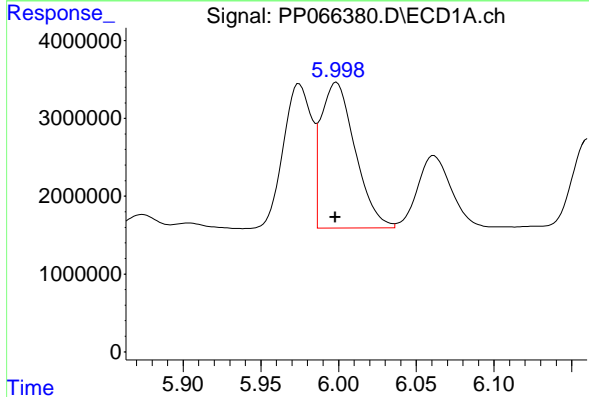
R.T.: 5.975 min
 Delta R.T.: 0.000 min
 Response: 23559476
 Conc: 424.43 ng/ml

Instrument :
 ECD_P
 ClientSampleId :
 AR1248CCC500



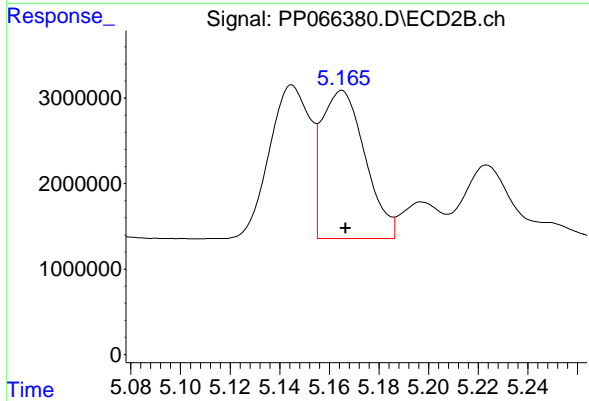
#16 AR-1242-1

R.T.: 5.145 min
 Delta R.T.: -0.002 min
 Response: 20513861
 Conc: 392.45 ng/ml



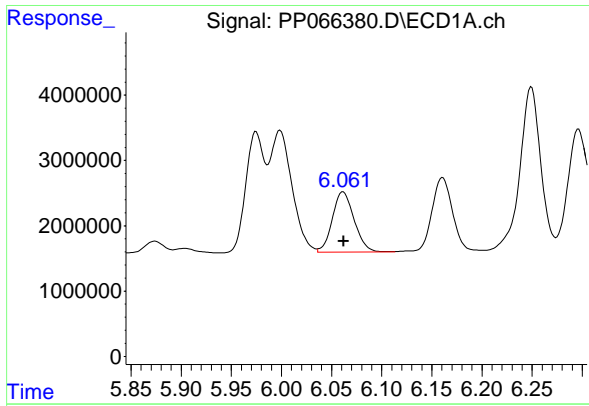
#17 AR-1242-2

R.T.: 5.999 min
 Delta R.T.: 0.000 min
 Response: 28633805
 Conc: 319.97 ng/ml



#17 AR-1242-2

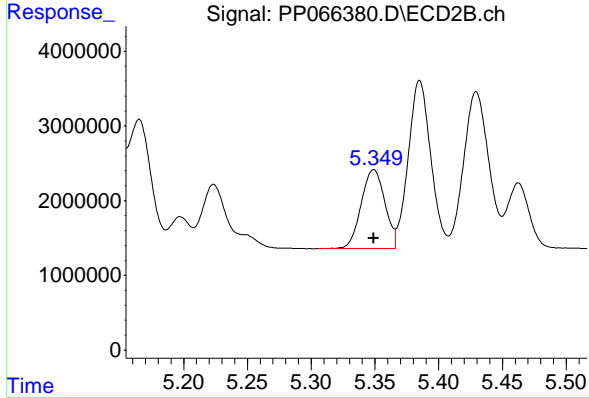
R.T.: 5.165 min
 Delta R.T.: -0.002 min
 Response: 21005624
 Conc: 290.81 ng/ml



#18 AR-1242-3

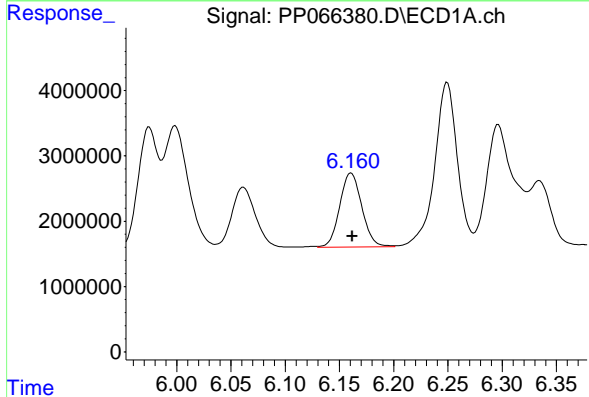
R.T.: 6.061 min
 Delta R.T.: 0.000 min
 Response: 13991599
 Conc: 254.89 ng/ml

Instrument :
 ECD_P
 ClientSampleId :
 AR1248CCC500



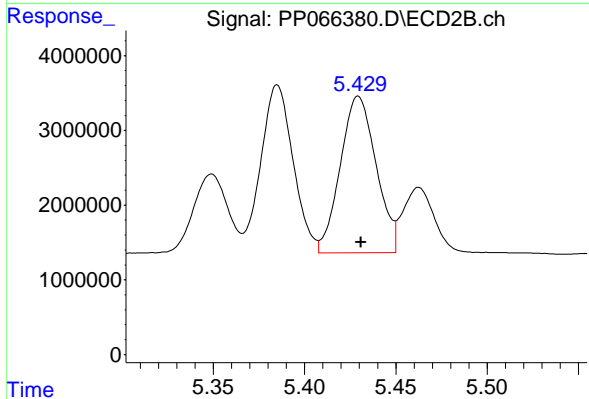
#18 AR-1242-3

R.T.: 5.349 min
 Delta R.T.: 0.000 min
 Response: 13643942
 Conc: 356.60 ng/ml



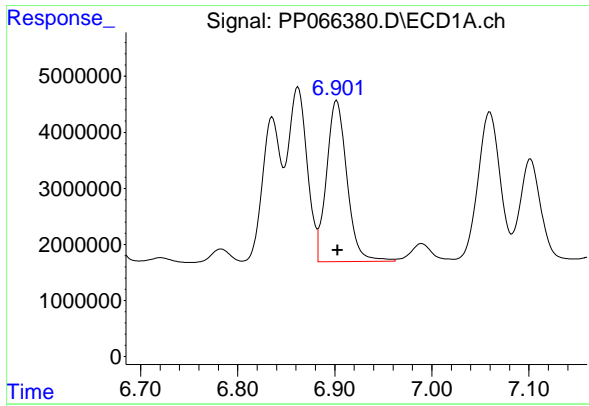
#19 AR-1242-4

R.T.: 6.161 min
 Delta R.T.: -0.001 min
 Response: 16026891
 Conc: 350.02 ng/ml



#19 AR-1242-4

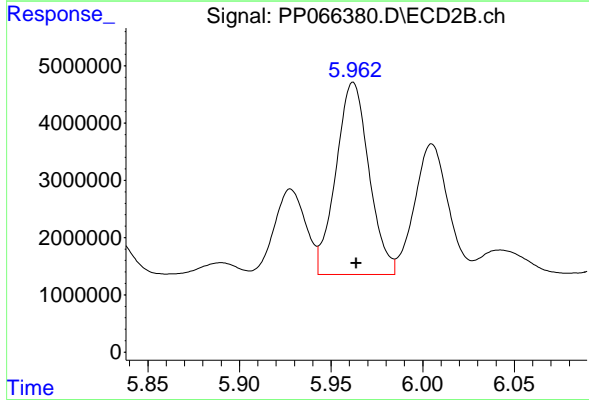
R.T.: 5.429 min
 Delta R.T.: -0.002 min
 Response: 28606322
 Conc: 753.69 ng/ml



#20 AR-1242-5

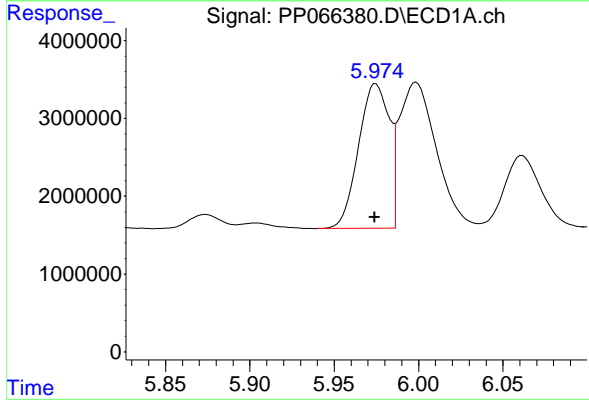
R.T.: 6.902 min
 Delta R.T.: 0.000 min
 Response: 41962049
 Conc: 843.63 ng/ml

Instrument :
 ECD_P
 ClientSampleId :
 AR1248CCC500



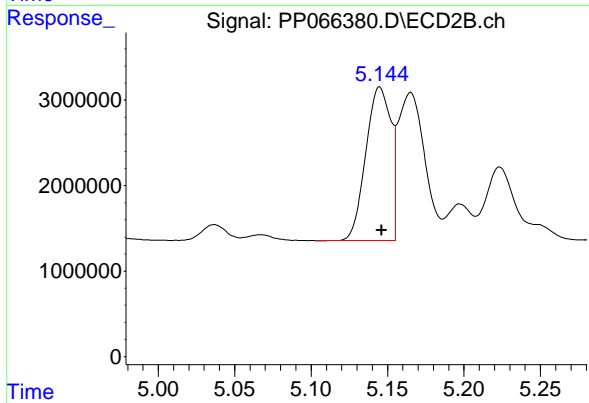
#20 AR-1242-5

R.T.: 5.962 min
 Delta R.T.: -0.002 min
 Response: 42168016
 Conc: 934.72 ng/ml



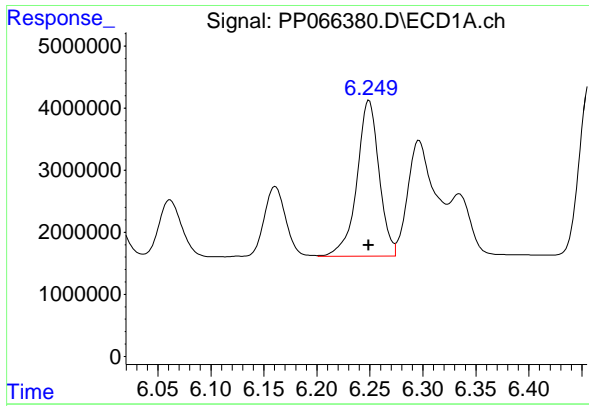
#21 AR-1248-1

R.T.: 5.975 min
 Delta R.T.: 0.000 min
 Response: 23559476
 Conc: 483.38 ng/ml



#21 AR-1248-1

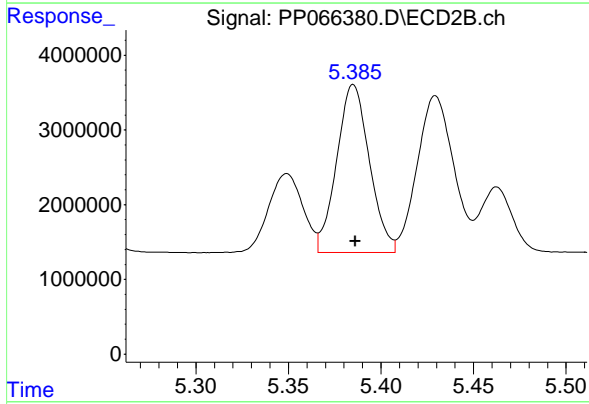
R.T.: 5.145 min
 Delta R.T.: -0.001 min
 Response: 20513861
 Conc: 497.91 ng/ml



#22 AR-1248-2

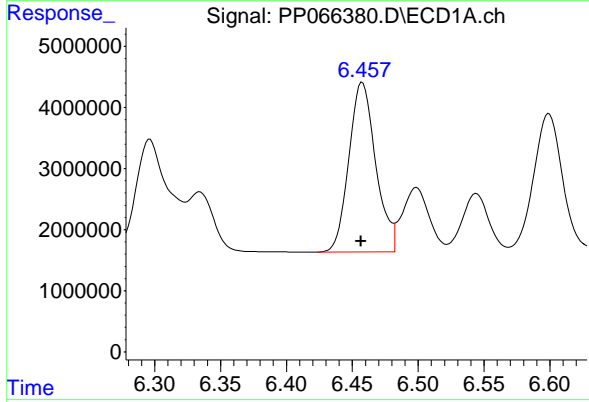
R.T.: 6.249 min
 Delta R.T.: 0.000 min
 Response: 36484708
 Conc: 477.95 ng/ml

Instrument :
 ECD_P
 ClientSampleId :
 AR1248CCC500



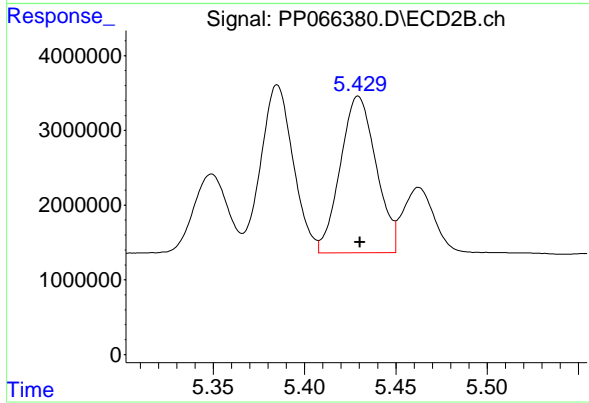
#22 AR-1248-2

R.T.: 5.385 min
 Delta R.T.: 0.000 min
 Response: 27665215
 Conc: 487.15 ng/ml



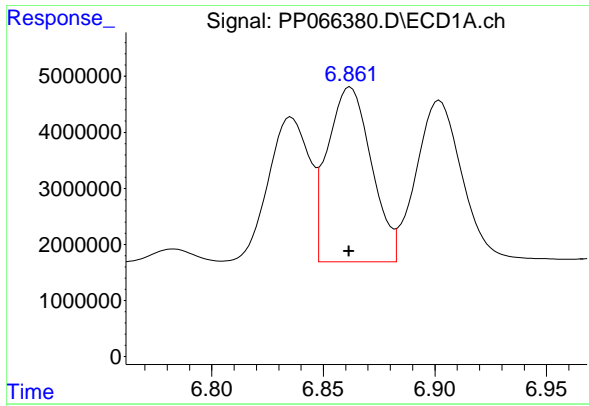
#23 AR-1248-3

R.T.: 6.458 min
 Delta R.T.: 0.001 min
 Response: 39384615
 Conc: 483.56 ng/ml



#23 AR-1248-3

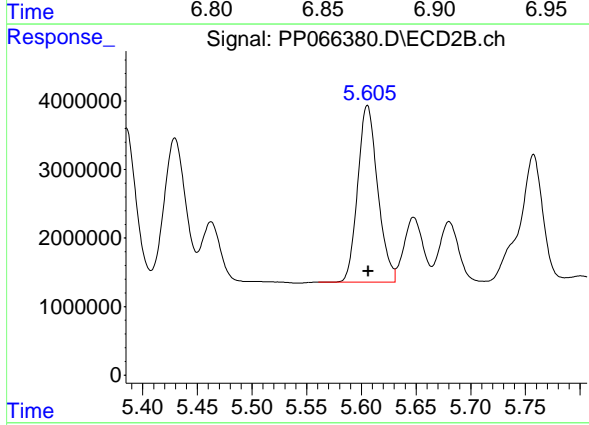
R.T.: 5.429 min
 Delta R.T.: 0.000 min
 Response: 28606322
 Conc: 485.13 ng/ml



#24 AR-1248-4

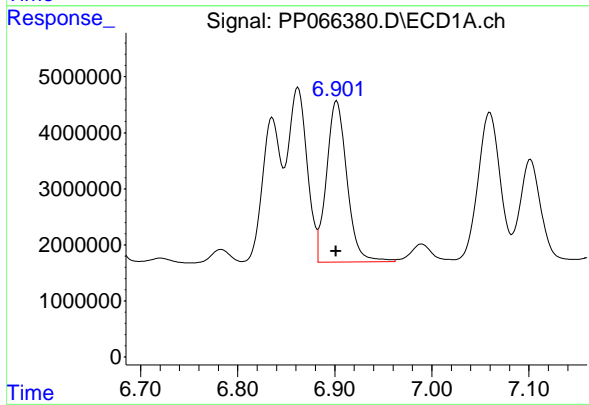
R.T.: 6.862 min
 Delta R.T.: 0.000 min
 Response: 42688848
 Conc: 458.31 ng/ml

Instrument :
 ECD_P
 ClientSampleId :
 AR1248CCC500



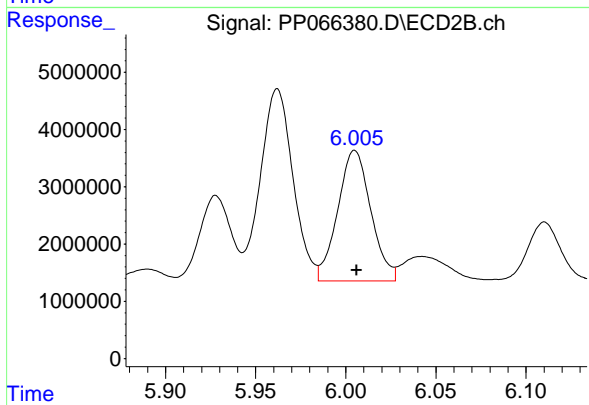
#24 AR-1248-4

R.T.: 5.606 min
 Delta R.T.: 0.000 min
 Response: 32812624
 Conc: 478.36 ng/ml



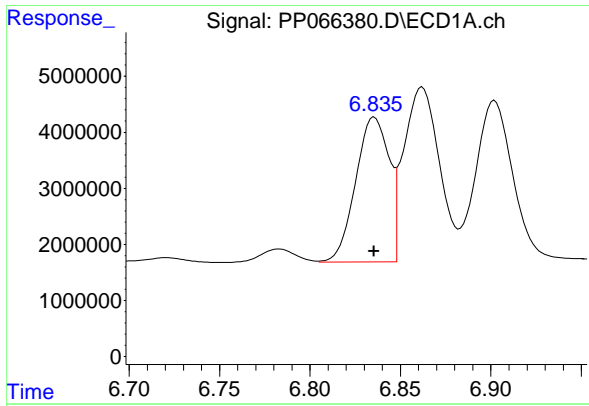
#25 AR-1248-5

R.T.: 6.902 min
 Delta R.T.: 0.000 min
 Response: 41962049
 Conc: 454.81 ng/ml



#25 AR-1248-5

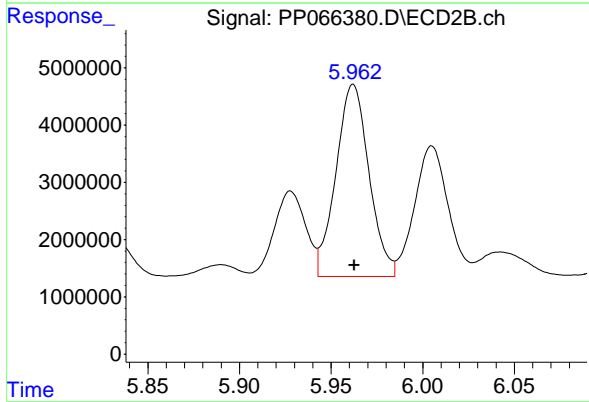
R.T.: 6.005 min
 Delta R.T.: 0.000 min
 Response: 29125237
 Conc: 464.40 ng/ml



#26 AR-1254-1

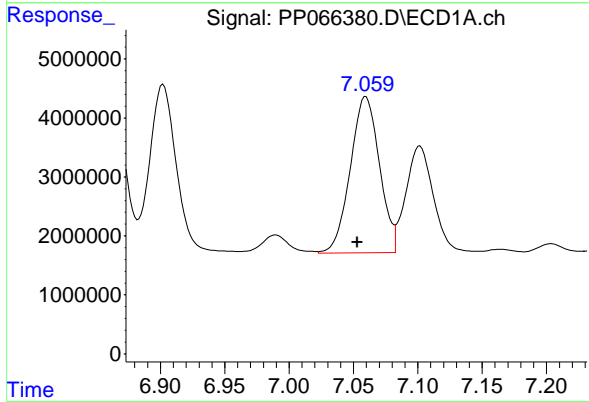
R.T.: 6.836 min
 Delta R.T.: 0.000 min
 Response: 33274631
 Conc: 355.80 ng/ml

Instrument :
 ECD_P
 ClientSampleId :
 AR1248CCC500



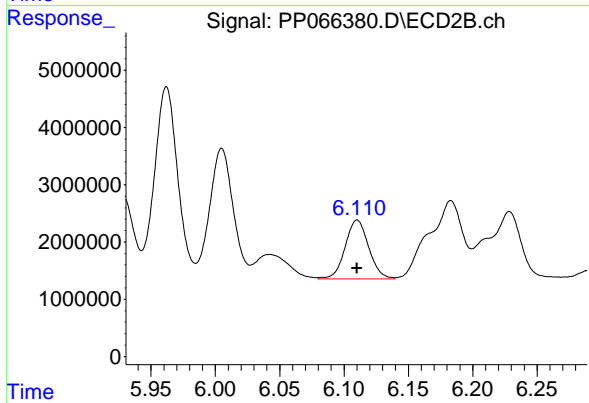
#26 AR-1254-1

R.T.: 5.962 min
 Delta R.T.: 0.000 min
 Response: 42168016
 Conc: 443.08 ng/ml



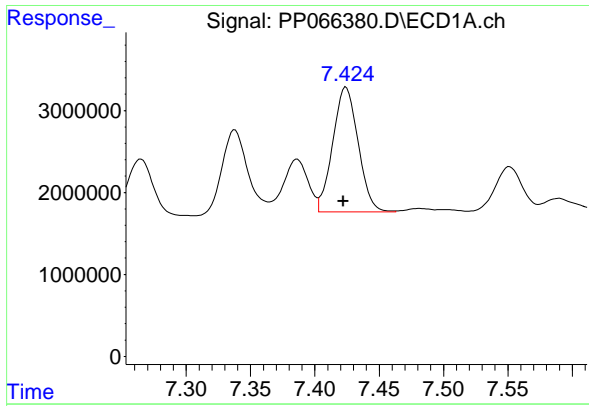
#27 AR-1254-2

R.T.: 7.060 min
 Delta R.T.: 0.007 min
 Response: 41718257
 Conc: 295.76 ng/ml



#27 AR-1254-2

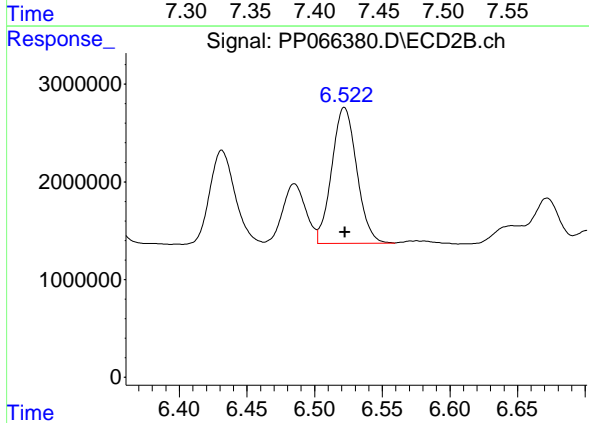
R.T.: 6.110 min
 Delta R.T.: 0.000 min
 Response: 13012153
 Conc: 156.68 ng/ml



#28 AR-1254-3

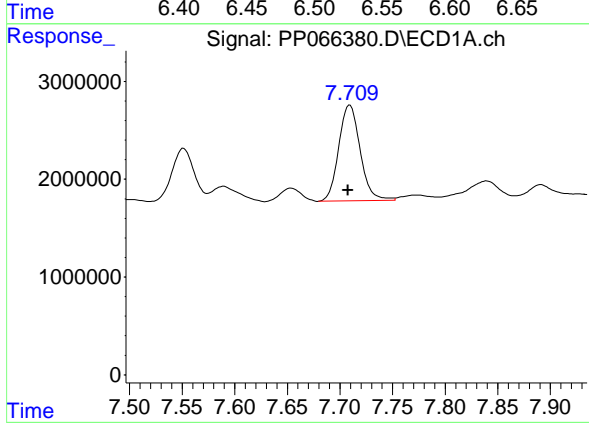
R.T.: 7.424 min
 Delta R.T.: 0.002 min
 Response: 20925191
 Conc: 161.34 ng/ml

Instrument :
 ECD_P
 ClientSampleId :
 AR1248CCC500



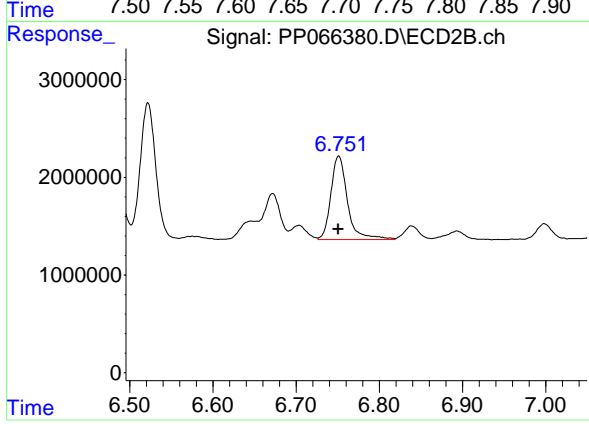
#28 AR-1254-3

R.T.: 6.522 min
 Delta R.T.: 0.000 min
 Response: 17910779
 Conc: 143.35 ng/ml



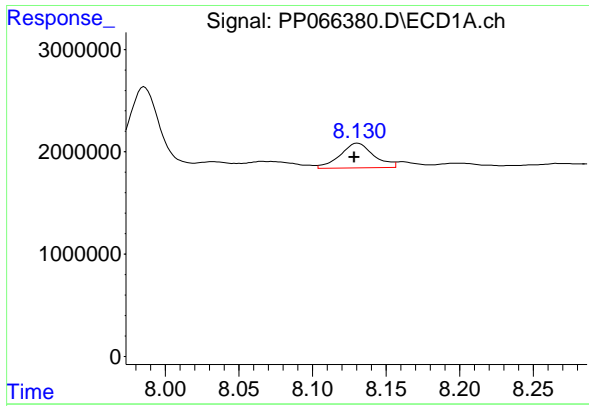
#29 AR-1254-4

R.T.: 7.709 min
 Delta R.T.: 0.002 min
 Response: 13909882
 Conc: 151.69 ng/ml



#29 AR-1254-4

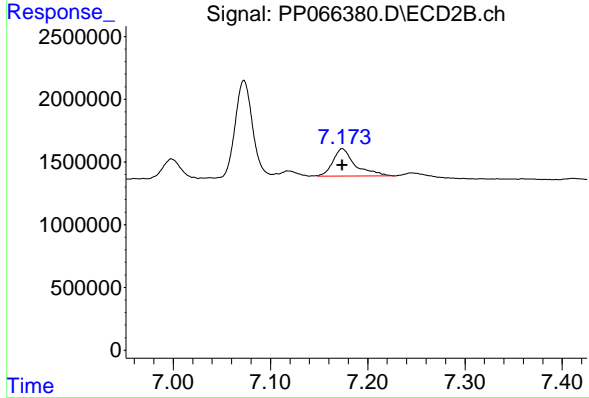
R.T.: 6.751 min
 Delta R.T.: 0.000 min
 Response: 11939074
 Conc: 174.49 ng/ml



#30 AR-1254-5

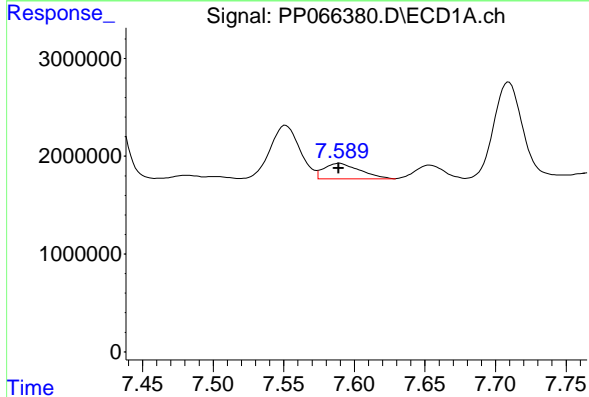
R.T.: 8.131 min
 Delta R.T.: 0.002 min
 Response: 3833354
 Conc: 38.57 ng/ml

Instrument :
 ECD_P
 ClientSampleId :
 AR1248CCC500



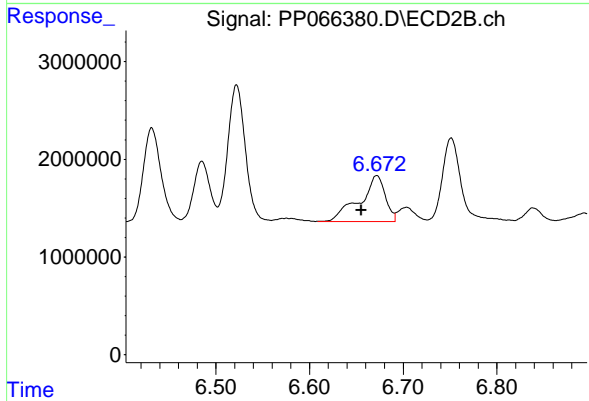
#30 AR-1254-5

R.T.: 7.174 min
 Delta R.T.: 0.000 min
 Response: 3473312
 Conc: 34.60 ng/ml



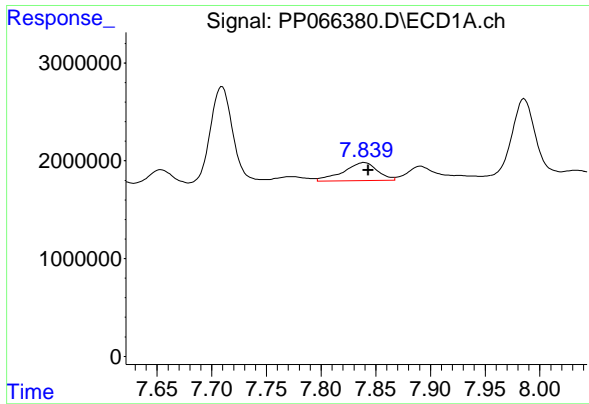
#31 AR-1260-1

R.T.: 7.590 min
 Delta R.T.: 0.000 min
 Response: 2808234
 Conc: 26.55 ng/ml



#31 AR-1260-1

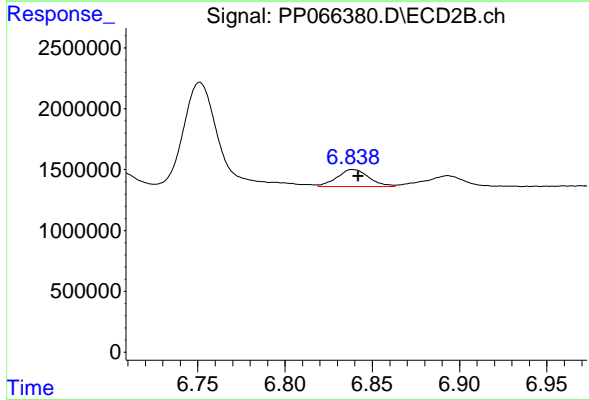
R.T.: 6.672 min
 Delta R.T.: 0.017 min
 Response: 8985584
 Conc: 105.11 ng/ml



#32 AR-1260-2

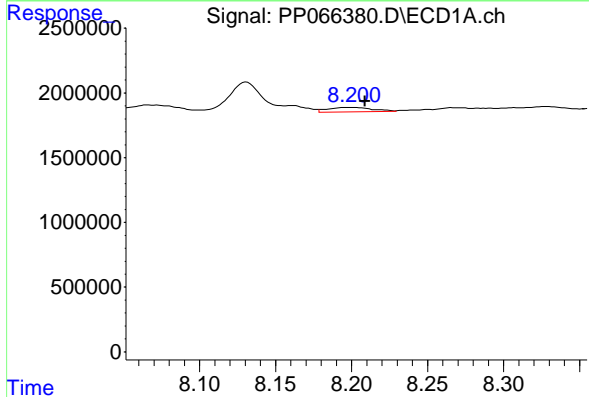
R.T.: 7.840 min
 Delta R.T.: -0.004 min
 Response: 3990964
 Conc: 34.64 ng/ml

Instrument :
 ECD_P
 ClientSampleId :
 AR1248CCC500



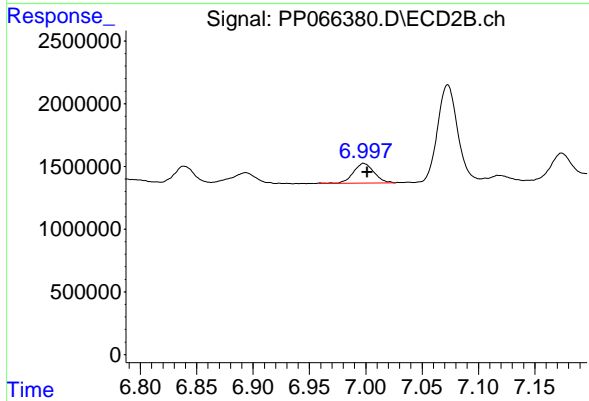
#32 AR-1260-2

R.T.: 6.839 min
 Delta R.T.: -0.003 min
 Response: 1778353
 Conc: 18.29 ng/ml



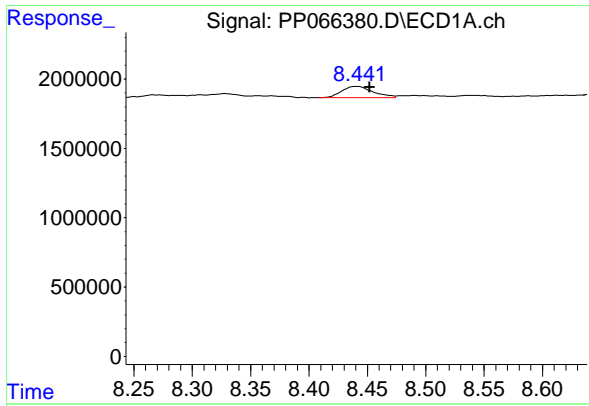
#33 AR-1260-3

R.T.: 8.201 min
 Delta R.T.: -0.008 min
 Response: 712553
 Conc: 8.98 ng/ml



#33 AR-1260-3

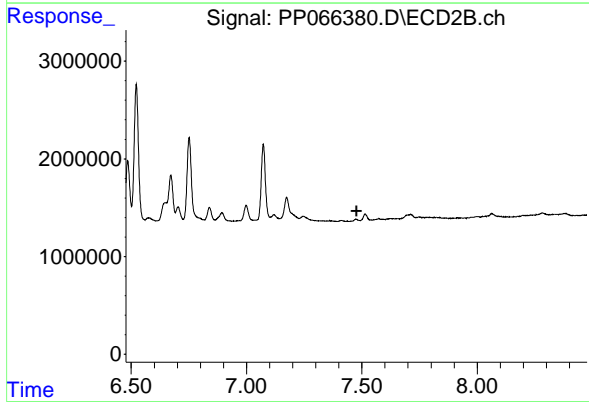
R.T.: 6.998 min
 Delta R.T.: -0.003 min
 Response: 1969848
 Conc: 21.47 ng/ml



#34 AR-1260-4

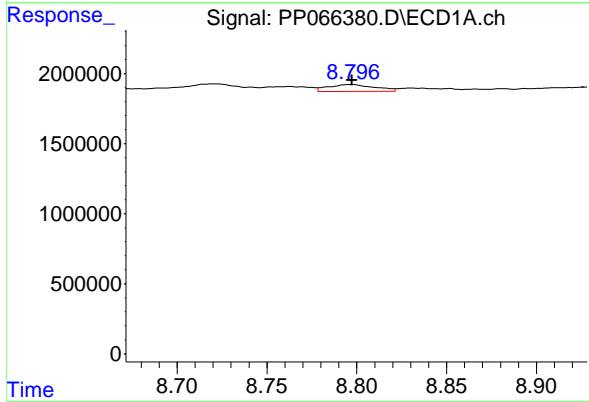
R.T.: 8.441 min
 Delta R.T.: -0.011 min
 Response: 1494086
 Conc: 17.16 ng/ml

Instrument :
 ECD_P
 ClientSampleId :
 AR1248CCC500



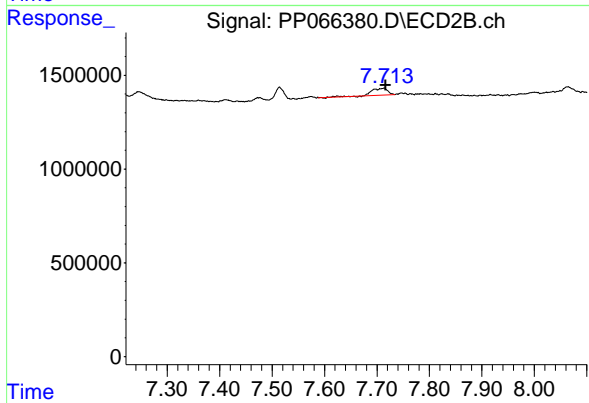
#34 AR-1260-4

R.T.: 0.000 min
 Exp R.T. : 7.477 min
 Response: 0
 Conc: N.D.



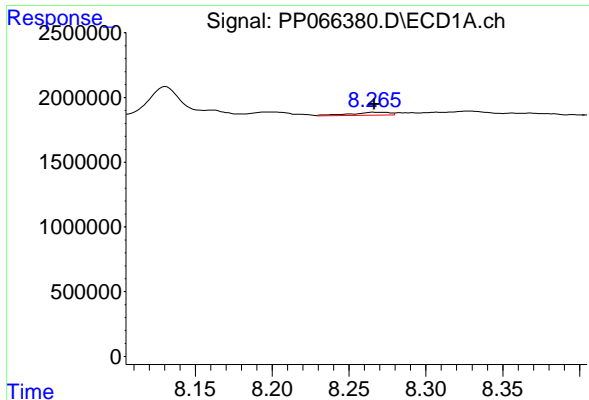
#35 AR-1260-5

R.T.: 8.797 min
 Delta R.T.: 0.000 min
 Response: 896637
 Conc: 5.80 ng/ml



#35 AR-1260-5

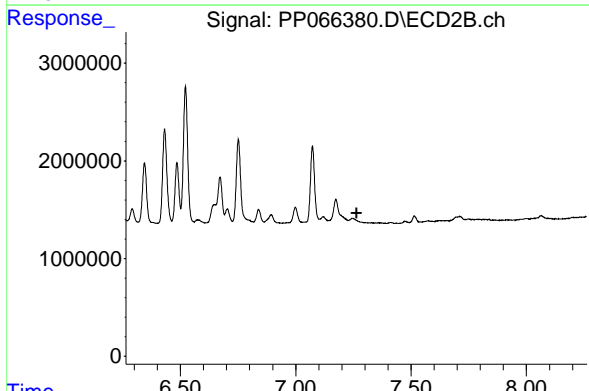
R.T.: 7.713 min
 Delta R.T.: -0.003 min
 Response: 807567
 Conc: 5.74 ng/ml



#36 AR-1262-1

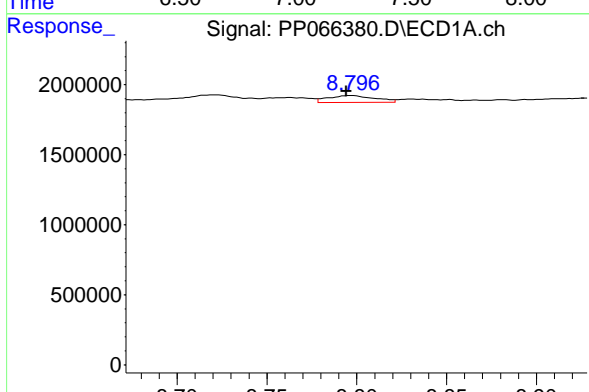
R.T.: 8.266 min
 Delta R.T.: 0.000 min
 Response: 397693
 Conc: 7.05 ng/ml

Instrument : ECD_P
 ClientSampleId : AR1248CCC500



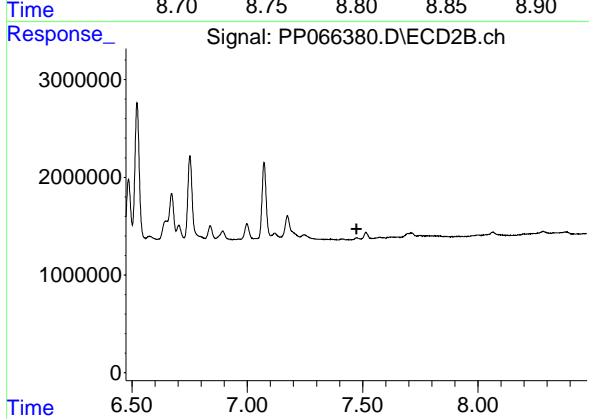
#36 AR-1262-1

R.T.: 0.000 min
 Exp R.T. : 7.263 min
 Response: 0
 Conc: N.D.



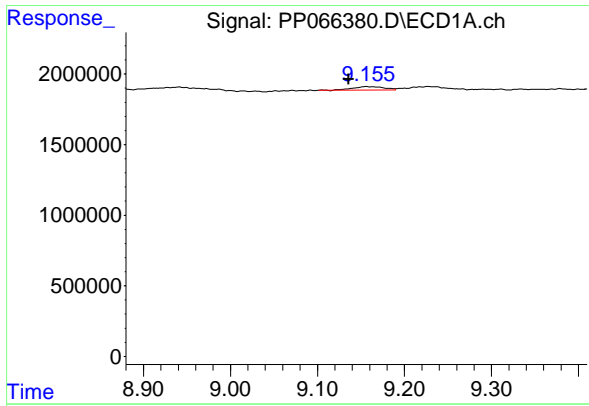
#37 AR-1262-2

R.T.: 8.797 min
 Delta R.T.: 0.003 min
 Response: 896637
 Conc: 4.74 ng/ml



#37 AR-1262-2

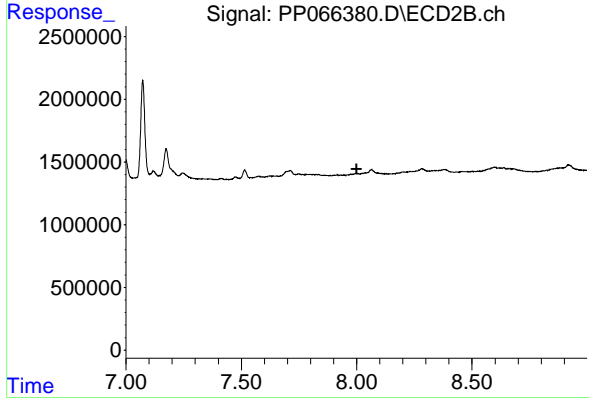
R.T.: 0.000 min
 Exp R.T. : 7.474 min
 Response: 0
 Conc: N.D.



#38 AR-1262-3

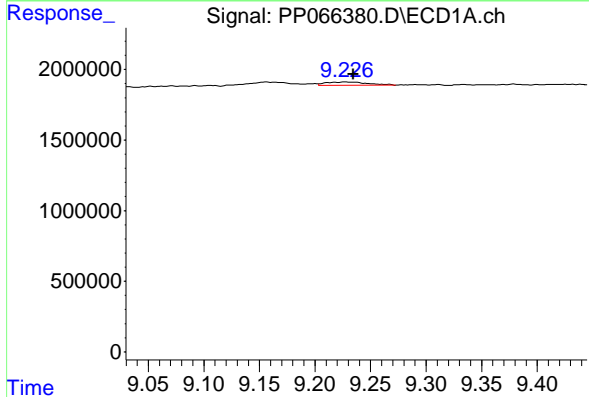
R.T.: 9.156 min
 Delta R.T.: 0.020 min
 Response: 613077
 Conc: 4.70 ng/ml

Instrument :
 ECD_P
 ClientSampleId :
 AR1248CCC500



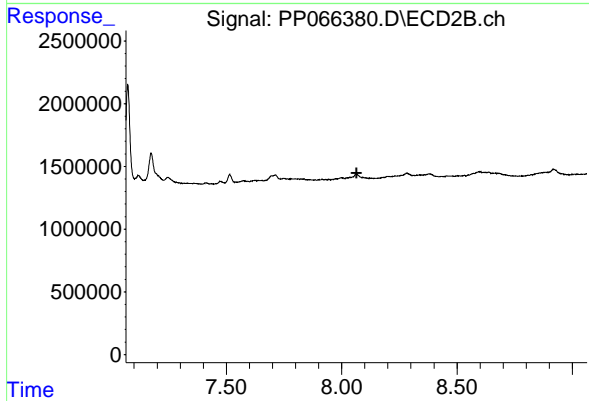
#38 AR-1262-3

R.T.: 0.000 min
 Exp R.T. : 7.999 min
 Response: 0
 Conc: N.D.



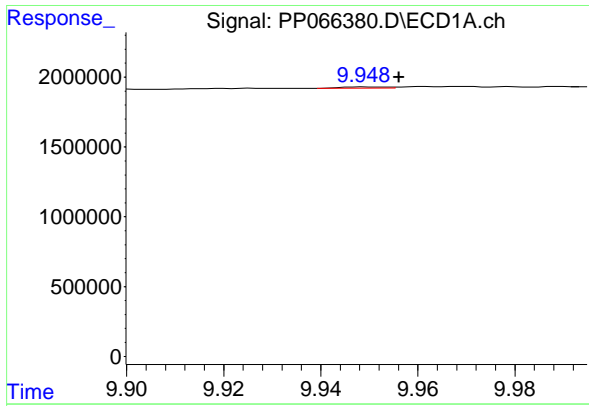
#39 AR-1262-4

R.T.: 9.227 min
 Delta R.T.: -0.007 min
 Response: 634027
 Conc: 5.63 ng/ml



#39 AR-1262-4

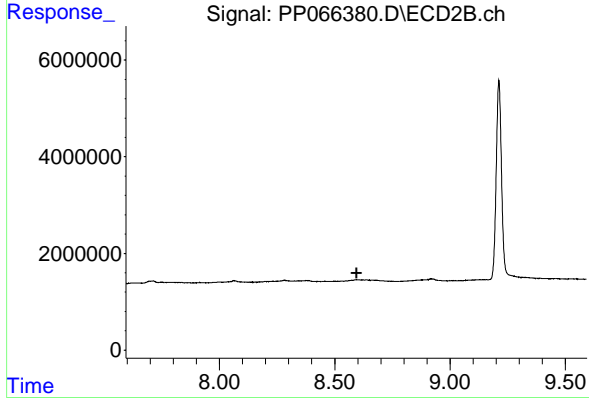
R.T.: 0.000 min
 Exp R.T. : 8.065 min
 Response: 0
 Conc: N.D.



#40 AR-1262-5

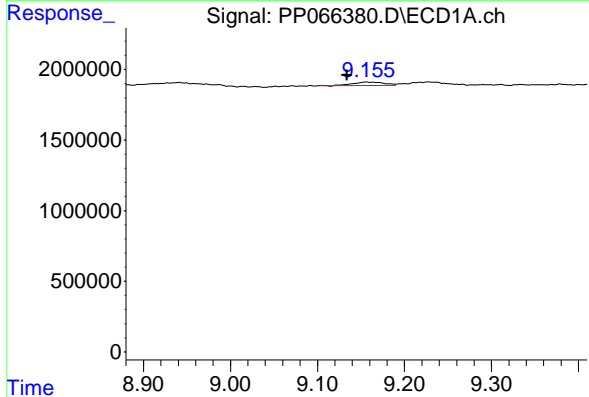
R.T.: 9.949 min
 Delta R.T.: -0.007 min
 Response: 55859
 Conc: 0.86 ng/ml

Instrument :
 ECD_P
 ClientSampleId :
 AR1248CCC500



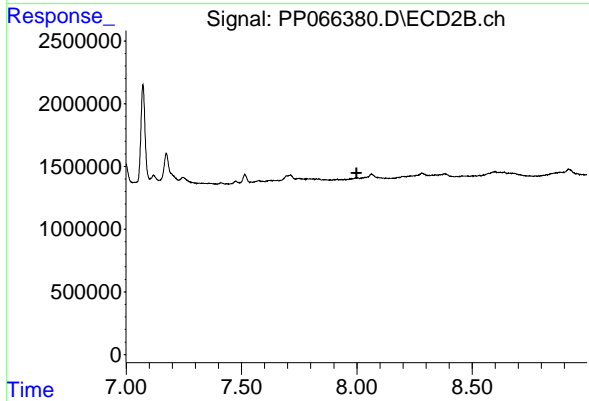
#40 AR-1262-5

R.T.: 0.000 min
 Exp R.T. : 8.594 min
 Response: 0
 Conc: N.D.



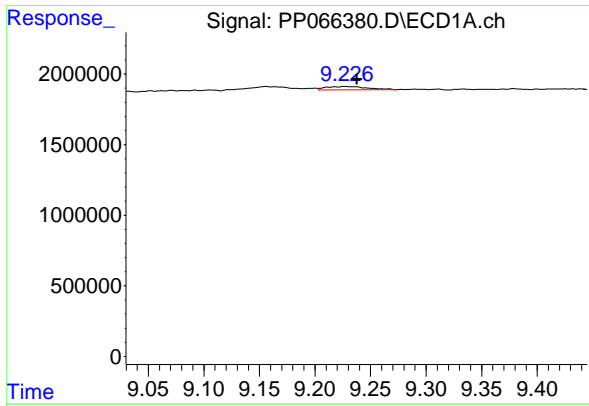
#41 AR-1268-1

R.T.: 9.156 min
 Delta R.T.: 0.022 min
 Response: 613077
 Conc: 2.62 ng/ml



#41 AR-1268-1

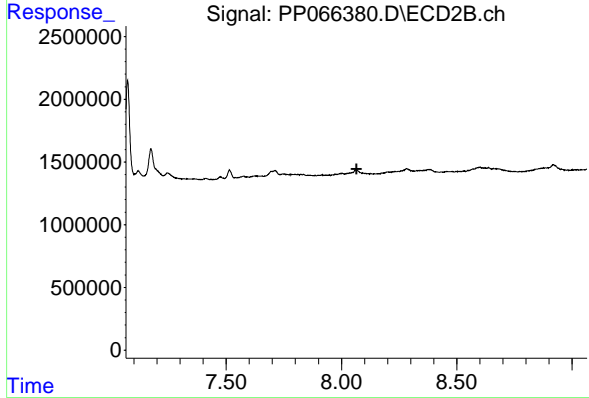
R.T.: 0.000 min
 Exp R.T. : 7.999 min
 Response: 0
 Conc: N.D.



#42 AR-1268-2

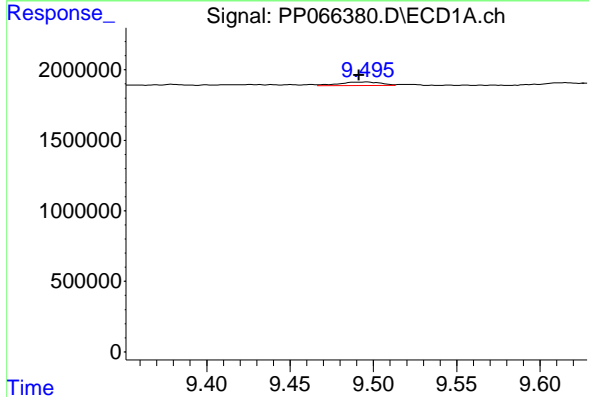
R.T.: 9.227 min
 Delta R.T.: -0.011 min
 Response: 634027
 Conc: 2.97 ng/ml

Instrument :
 ECD_P
 ClientSampleId :
 AR1248CCC500



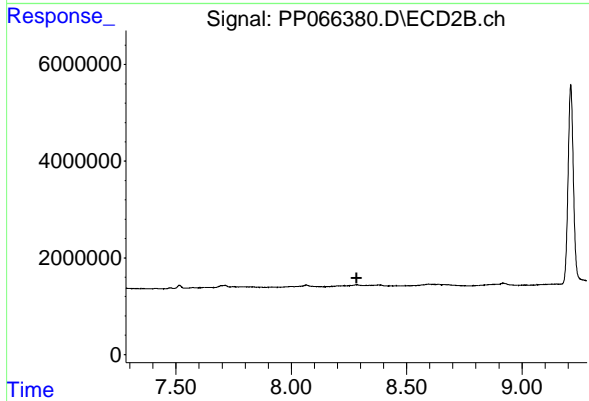
#42 AR-1268-2

R.T.: 0.000 min
 Exp R.T. : 8.065 min
 Response: 0
 Conc: N.D.



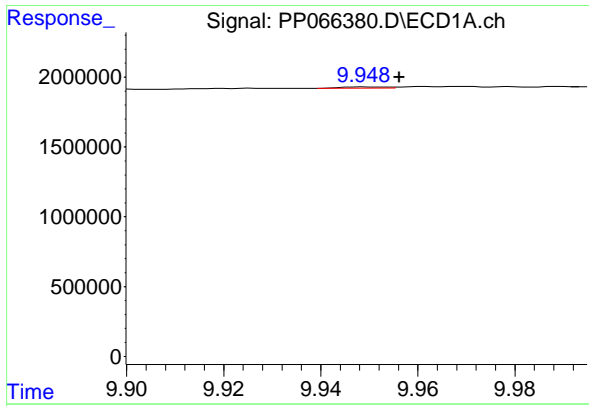
#43 AR-1268-3

R.T.: 9.496 min
 Delta R.T.: 0.004 min
 Response: 434332
 Conc: 2.27 ng/ml



#43 AR-1268-3

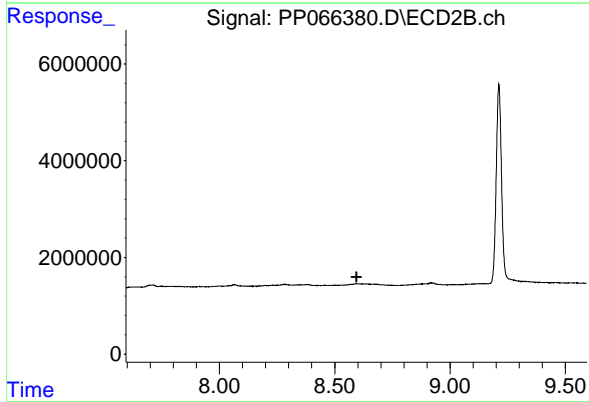
R.T.: 0.000 min
 Exp R.T. : 8.283 min
 Response: 0
 Conc: N.D.



#44 AR-1268-4

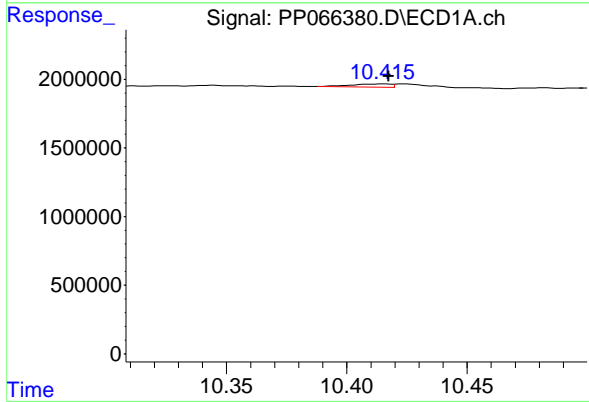
R.T.: 9.949 min
 Delta R.T.: -0.007 min
 Response: 55859
 Conc: 0.80 ng/ml

Instrument :
 ECD_P
 ClientSampleId :
 AR1248CCC500



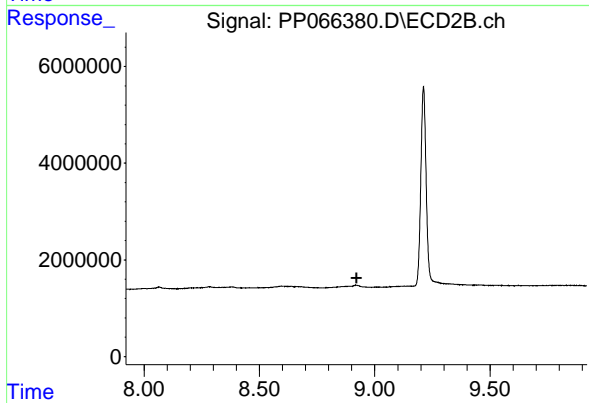
#44 AR-1268-4

R.T.: 0.000 min
 Exp R.T. : 8.594 min
 Response: 0
 Conc: N.D.



#45 AR-1268-5

R.T.: 10.415 min
 Delta R.T.: -0.002 min
 Response: 263201
 Conc: 0.43 ng/ml



#45 AR-1268-5

R.T.: 0.000 min
 Exp R.T. : 8.921 min
 Response: 0
 Conc: N.D.