

Data Path : Z:\pestpcbsrv\HPCHEM1\ECD_P\Data\PP071724\
 Data File : PP066387.D
 Signal(s) : Signal #1: ECD1A.ch Signal #2: ECD2B.ch
 Acq On : 17 Jul 2024 21:00
 Operator : YP\AJ
 Sample : AR1242CCC500
 Misc :
 ALS Vial : 4 Sample Multiplier: 1

Instrument :
 ECD_P
 ClientSampleId :
 AR1242CCC500

Integration File signal 1: autoint1.e
 Integration File signal 2: autoint2.e
 Quant Time: Jul 18 01:53:37 2024
 Quant Method : Z:\pestpcbsrv\HPCHEM1\ECD_P\methods\PP071624.M
 Quant Title : GC EXTRACTABLES
 QLast Update : Wed Jul 17 07:20:03 2024
 Response via : Initial Calibration
 Integrator: ChemStation

Volume Inj. : 2 µl
 Signal #1 Phase : ZB-MR2 Signal #2 Phase: ZB-MR2
 Signal #1 Info : 30Mx0.32mmx 0.50µ Signal #2 Info : 30M x 0.32mm x 0.25µm

Compound	RT#1	RT#2	Resp#1	Resp#2	ng/ml	ng/ml

System Monitoring Compounds						
1) SA Tetrachlo...	4.793	4.030	98009269	105.4E6	55.631	55.220
2) SA Decachlor...	10.796	9.209	89935677	65103232	51.239	51.022
Target Compounds						
3) L1 AR-1016-1	5.973	5.144	30845748	26266691	420.859	419.292
4) L1 AR-1016-2	5.996	5.163	45805029	37256010	418.855	418.588
5) L1 AR-1016-3	6.060	5.345	28345335	19497330	419.921	412.998
6) L1 AR-1016-4	6.160	5.383	23153791	16083874	417.150	421.483
7) L1 AR-1016-5	6.455	5.604	23931711	20646894	430.431	425.998
8) L2 AR-1221-1	4.997	4.245	2953155	3090872	133.012	133.733
9) L2 AR-1221-2	5.088	4.336	4583830	4846248	273.092	280.748
10) L2 AR-1221-3	5.166	4.414	16652789	16104504	325.067	318.569
11) L3 AR-1232-1	5.166	4.414	16652789	16104504	380.570	377.325
12) L3 AR-1232-2	5.703	5.144	23033946	26266691	891.420	890.618
13) L3 AR-1232-3	5.973	5.345	30845748	19497330	912.109	875.408
14) L3 AR-1232-4	6.160	5.427	23153791	19691967	893.232	979.392
15) L3 AR-1232-5	6.247	5.604	21440080	20646894	988.898	969.330
16) L4 AR-1242-1	5.973	5.144	30845748	26266691	555.694	502.509
17) L4 AR-1242-2	5.996	5.163	45805029	37256010	511.844	515.784
18) L4 AR-1242-3	6.060	5.345	28345335	19497330	516.369	509.583
19) L4 AR-1242-4	6.160	5.427	23153791	19691967	505.670	518.827
20) L4 AR-1242-5	6.901	5.960	26016993	22538431	523.063	499.598
21) L5 AR-1248-1	5.973	5.144	30845748	26266691	632.880	637.537
22) L5 AR-1248-2	6.247	5.383	21440080	16083874	280.866	283.219
23) L5 AR-1248-3	6.455	5.427	23931711	19691967	293.829	333.955
24) L5 AR-1248-4	6.860	5.604	24425561	20646894	262.236	301.001
25) L5 AR-1248-5	6.901	6.003	26016993	18671984	281.989	297.724
26) L6 AR-1254-1	6.834	5.960	19166457	22538431	204.945	236.823
27) L6 AR-1254-2	7.059	6.107	22461702	6568168	159.241	79.086 #
28) L6 AR-1254-3	7.423	6.520	9669777	7422900	74.557	59.410
29) L6 AR-1254-4	7.708	6.749	7160314	4833936	78.086	70.646
30) L6 AR-1254-5	8.129	7.172	3728808	2087528	37.515	20.792 #
31) L7 AR-1260-1	7.587	6.642	2430239	1433931	22.973	16.773 #
32) L7 AR-1260-2	7.840	6.837	3432624	973892	29.795	10.015 #
33) L7 AR-1260-3	8.196	6.996	684566	947175	8.625	10.324
34) L7 AR-1260-4	8.436	0.000	815647	0	9.366	N.D. #
35) L7 AR-1260-5	8.794	0.000	883057	0	5.712	N.D. #
36) L8 AR-1262-1	8.285f	0.000	250963	0	4.451	N.D. #
37) L8 AR-1262-2	8.794	0.000	883057	0	4.672	N.D. #
38) L8 AR-1262-3	9.158f	0.000	662895	0	5.079	N.D. #
41) L9 AR-1268-1	9.158f	0.000	662895	0	2.835	N.D. #
43) L9 AR-1268-3	9.490	0.000	504908	0	2.636	N.D. #
45) L9 AR-1268-5	10.414	0.000	810378	0	1.325	N.D. #

Data Path : Z:\pestpcbsrv\HPCHEM1\ECD_P\Data\PP071724\
 Data File : PP066387.D
 Signal(s) : Signal #1: ECD1A.ch Signal #2: ECD2B.ch
 Acq On : 17 Jul 2024 21:00
 Operator : YP\AJ
 Sample : AR1242CCC500
 Misc :
 ALS Vial : 4 Sample Multiplier: 1

Instrument :
 ECD_P
ClientSampleId :
 AR1242CCC500

Integration File signal 1: autoint1.e
 Integration File signal 2: autoint2.e
 Quant Time: Jul 18 01:53:37 2024
 Quant Method : Z:\pestpcbsrv\HPCHEM1\ECD_P\methods\PP071624.M
 Quant Title : GC EXTRACTABLES
 QLast Update : Wed Jul 17 07:20:03 2024
 Response via : Initial Calibration
 Integrator: ChemStation

Volume Inj. : 2 µl
 Signal #1 Phase : ZB-MR1 Signal #2 Phase: ZB-MR2
 Signal #1 Info : 30Mx0.32mmx 0.50µ Signal #2 Info : 30M x 0.32mm x 0.25µm

Compound	RT#1	RT#2	Resp#1	Resp#2	ng/ml	ng/ml

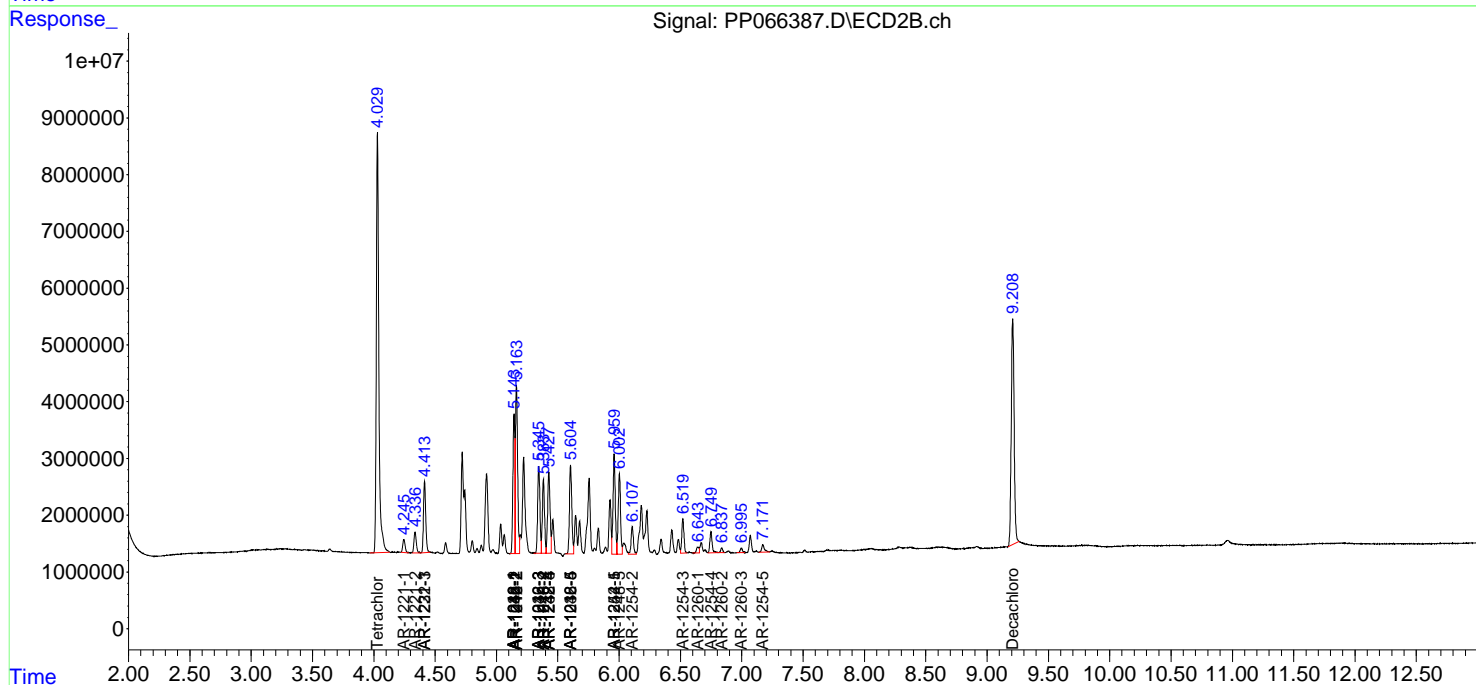
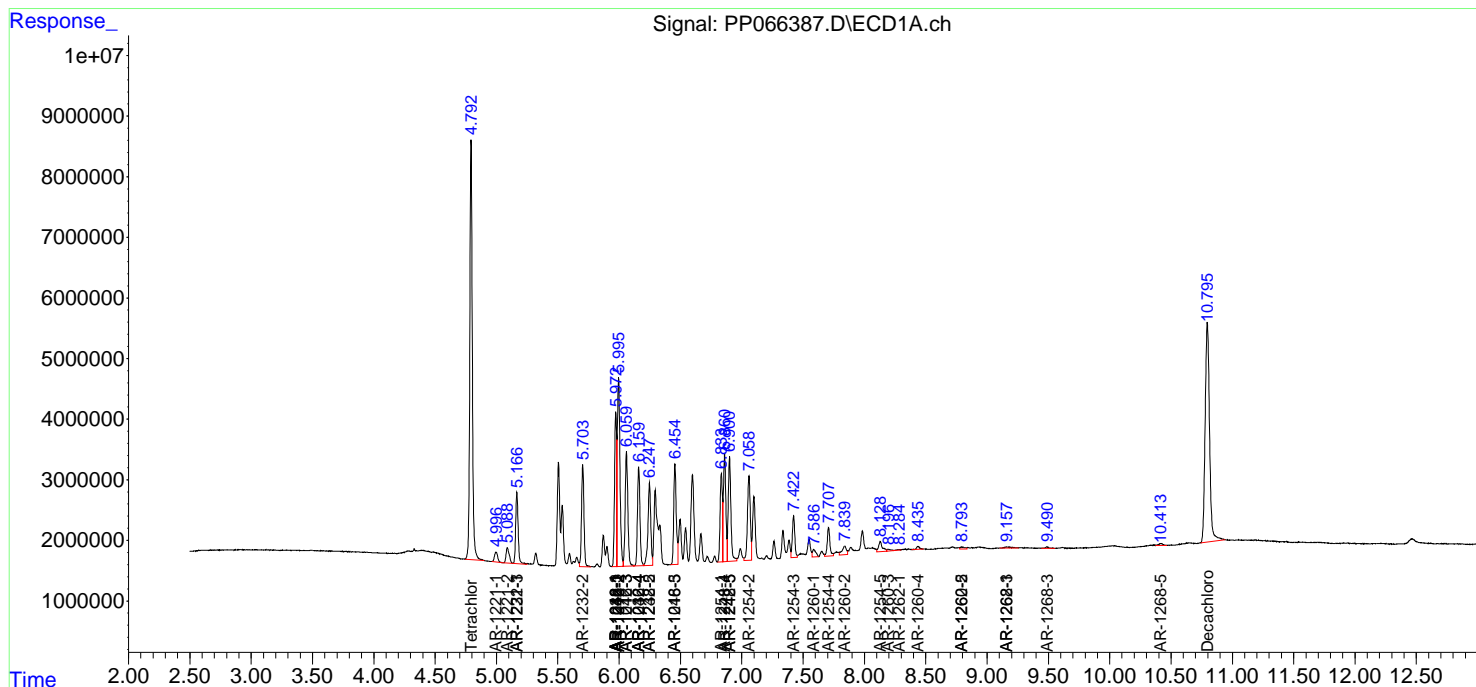
(f)=RT Delta > 1/2 Window (#)=Amounts differ by > 25% (m)=manual int.

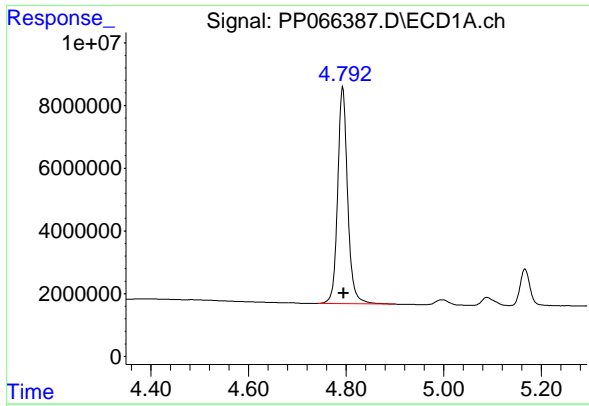
Data Path : Z:\pestpcbsrv\HPCHEM1\ECD_P\Data\PP071724\
 Data File : PP066387.D
 Signal(s) : Signal #1: ECD1A.ch Signal #2: ECD2B.ch
 Acq On : 17 Jul 2024 21:00
 Operator : YP\AJ
 Sample : AR1242CCC500
 Misc :
 ALS Vial : 4 Sample Multiplier: 1

Instrument :
 ECD_P
 ClientSampleId :
 AR1242CCC500

Integration File signal 1: autoint1.e
 Integration File signal 2: autoint2.e
 Quant Time: Jul 18 01:53:37 2024
 Quant Method : Z:\pestpcbsrv\HPCHEM1\ECD_P\methods\PP071624.M
 Quant Title : GC EXTRACTABLES
 QLast Update : Wed Jul 17 07:20:03 2024
 Response via : Initial Calibration
 Integrator: ChemStation

Volume Inj. : 2 µl
 Signal #1 Phase : ZB-MR1 Signal #2 Phase: ZB-MR2
 Signal #1 Info : 30Mx0.32mmx 0.50µm Signal #2 Info : 30M x 0.32mm x 0.25µm

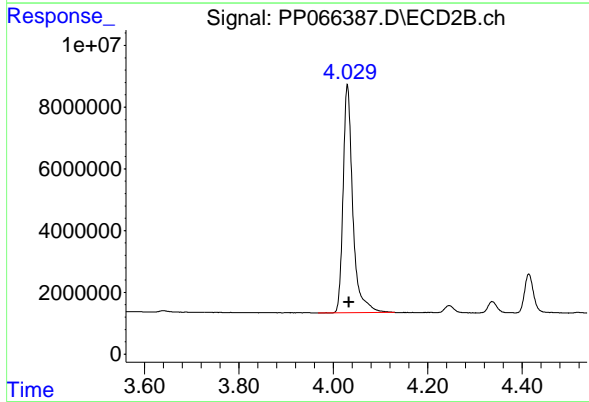




#1 Tetrachloro-m-xylene

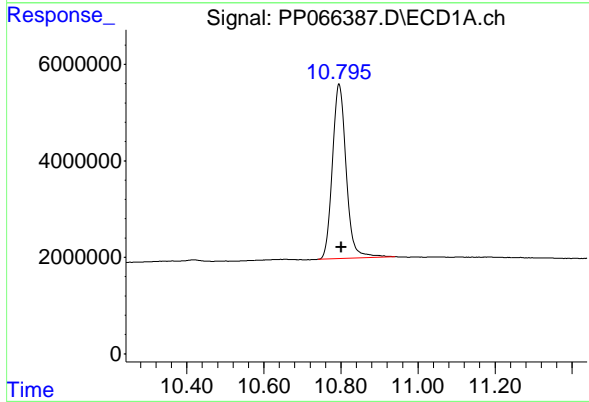
R.T.: 4.793 min
Delta R.T.: -0.002 min
Response: 98009269
Conc: 55.63 ng/ml

Instrument :
ECD_P
ClientSampleId :
AR1242CCC500



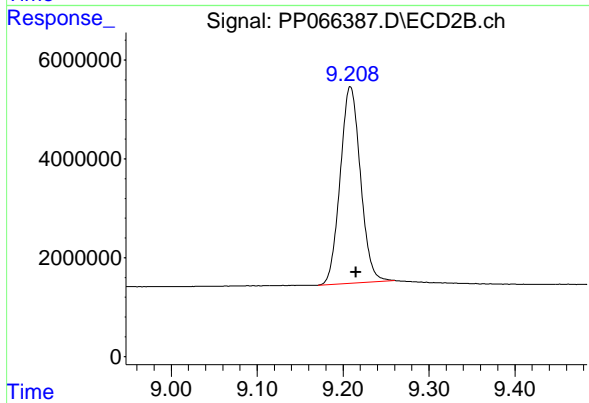
#1 Tetrachloro-m-xylene

R.T.: 4.030 min
Delta R.T.: -0.003 min
Response: 105446073
Conc: 55.22 ng/ml



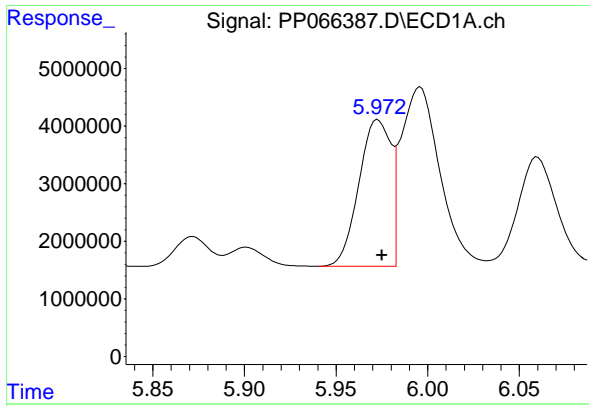
#2 Decachlorobiphenyl

R.T.: 10.796 min
Delta R.T.: -0.006 min
Response: 89935677
Conc: 51.24 ng/ml



#2 Decachlorobiphenyl

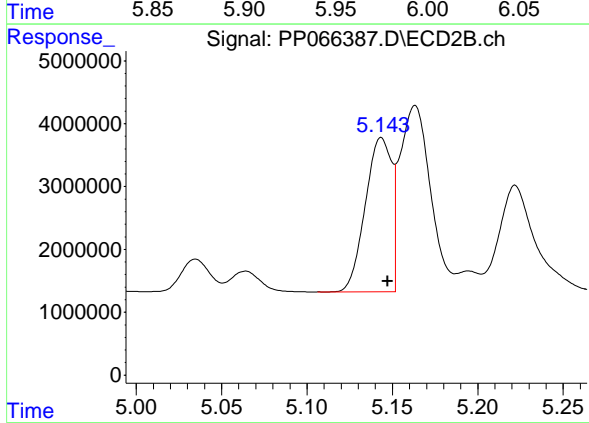
R.T.: 9.209 min
Delta R.T.: -0.006 min
Response: 65103232
Conc: 51.02 ng/ml



#3 AR-1016-1

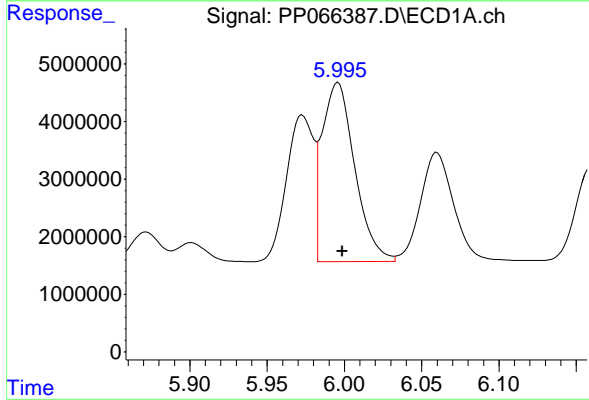
R.T.: 5.973 min
 Delta R.T.: -0.002 min
 Response: 30845748
 Conc: 420.86 ng/ml

Instrument :
 ECD_P
 ClientSampleId :
 AR1242CCC500



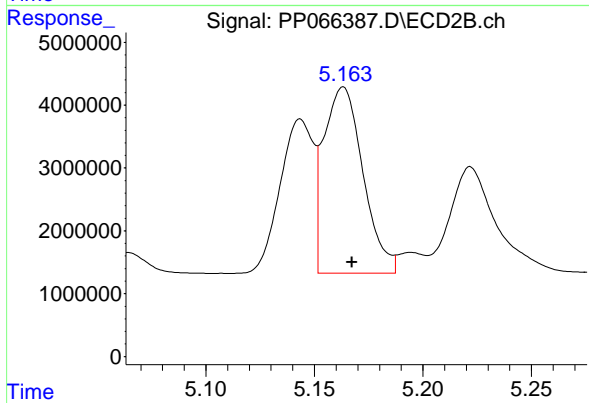
#3 AR-1016-1

R.T.: 5.144 min
 Delta R.T.: -0.004 min
 Response: 26266691
 Conc: 419.29 ng/ml



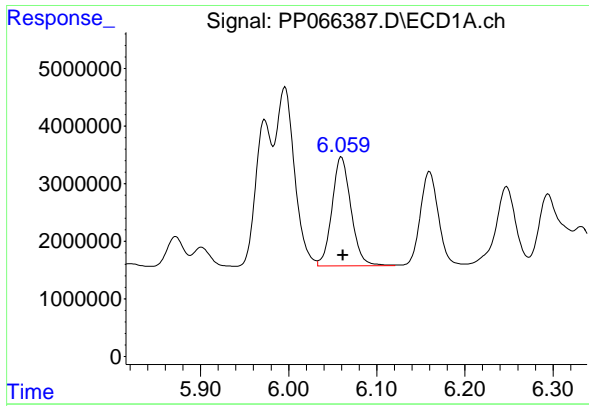
#4 AR-1016-2

R.T.: 5.996 min
 Delta R.T.: -0.003 min
 Response: 45805029
 Conc: 418.86 ng/ml



#4 AR-1016-2

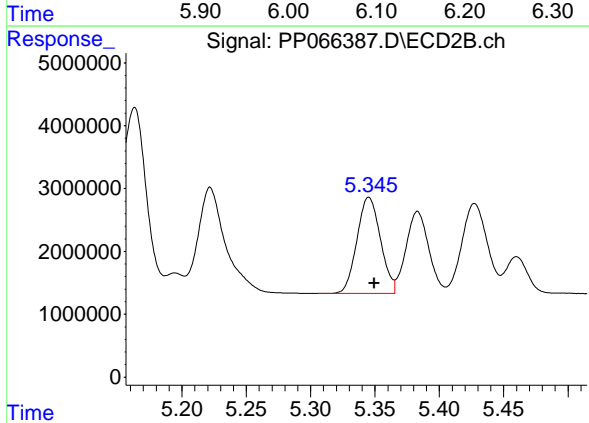
R.T.: 5.163 min
 Delta R.T.: -0.004 min
 Response: 37256010
 Conc: 418.59 ng/ml



#5 AR-1016-3

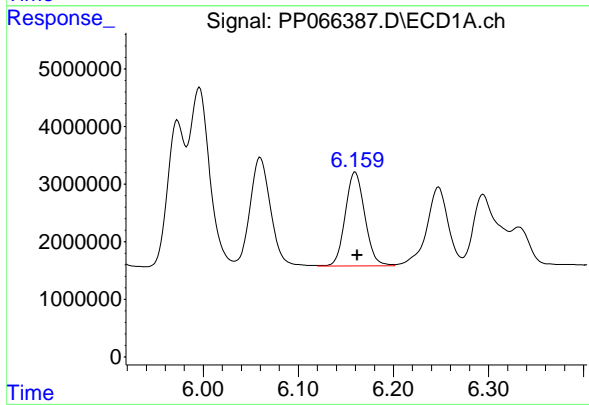
R.T.: 6.060 min
 Delta R.T.: -0.002 min
 Response: 28345335
 Conc: 419.92 ng/ml

Instrument :
 ECD_P
 ClientSampleId :
 AR1242CCC500



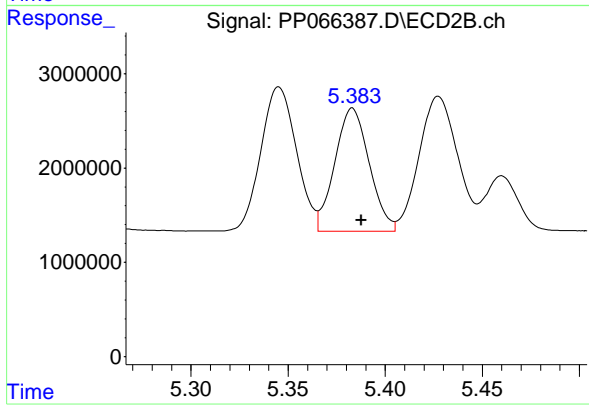
#5 AR-1016-3

R.T.: 5.345 min
 Delta R.T.: -0.004 min
 Response: 19497330
 Conc: 413.00 ng/ml



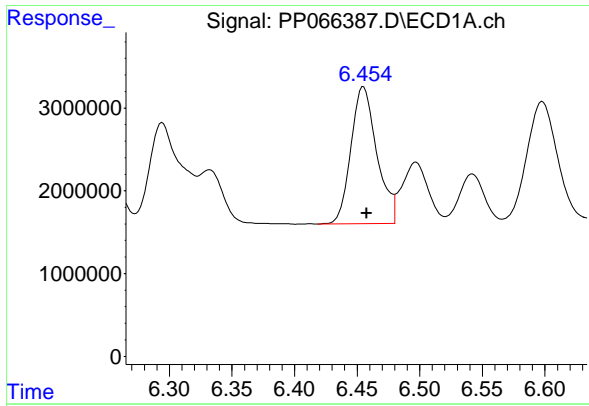
#6 AR-1016-4

R.T.: 6.160 min
 Delta R.T.: -0.002 min
 Response: 23153791
 Conc: 417.15 ng/ml



#6 AR-1016-4

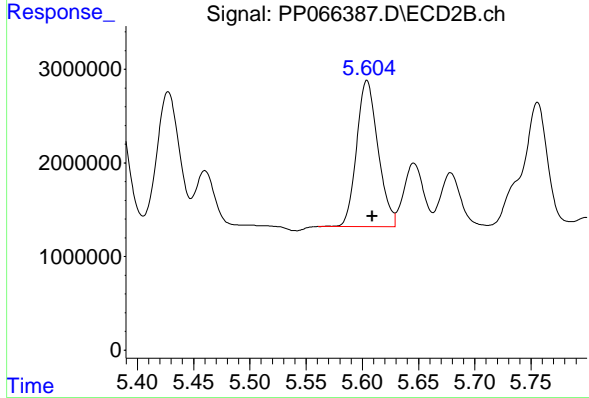
R.T.: 5.383 min
 Delta R.T.: -0.005 min
 Response: 16083874
 Conc: 421.48 ng/ml



#7 AR-1016-5

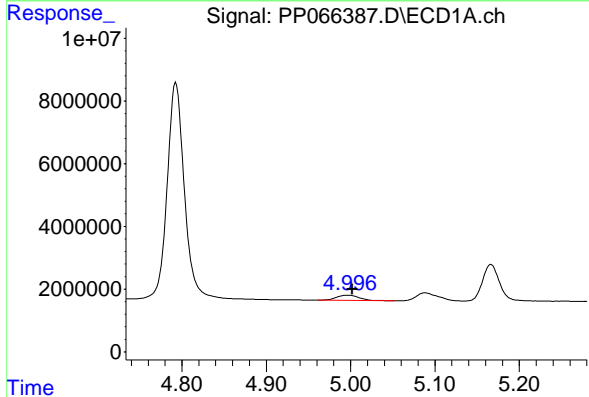
R.T.: 6.455 min
 Delta R.T.: -0.002 min
 Response: 23931711
 Conc: 430.43 ng/ml

Instrument :
 ECD_P
 ClientSampleId :
 AR1242CCC500



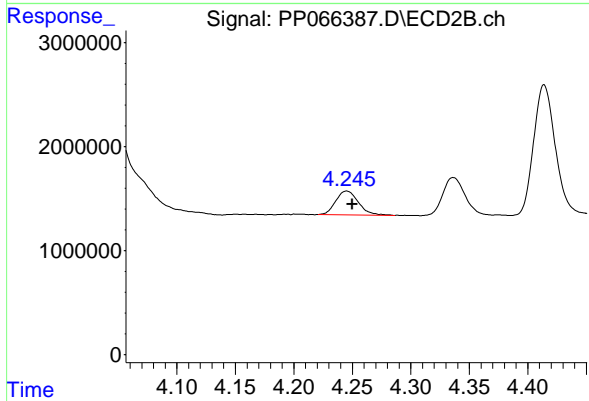
#7 AR-1016-5

R.T.: 5.604 min
 Delta R.T.: -0.005 min
 Response: 20646894
 Conc: 426.00 ng/ml



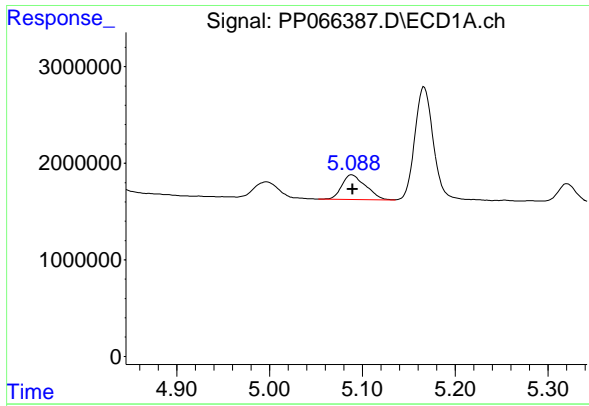
#8 AR-1221-1

R.T.: 4.997 min
 Delta R.T.: -0.006 min
 Response: 2953155
 Conc: 133.01 ng/ml



#8 AR-1221-1

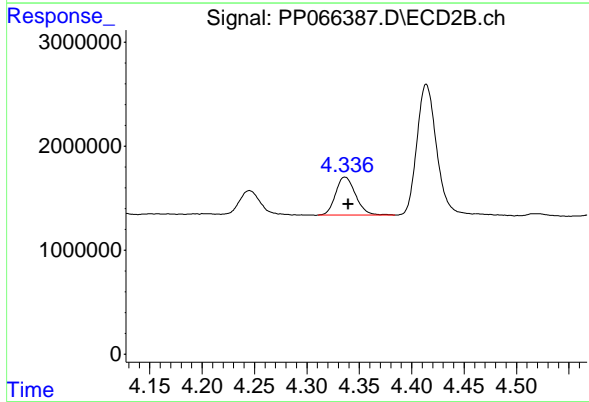
R.T.: 4.245 min
 Delta R.T.: -0.005 min
 Response: 3090872
 Conc: 133.73 ng/ml



#9 AR-1221-2

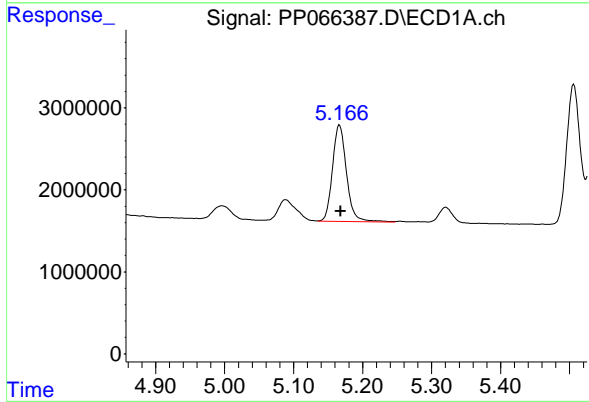
R.T.: 5.088 min
 Delta R.T.: 0.000 min
 Response: 4583830
 Conc: 273.09 ng/ml

Instrument :
 ECD_P
 ClientSampleId :
 AR1242CCC500



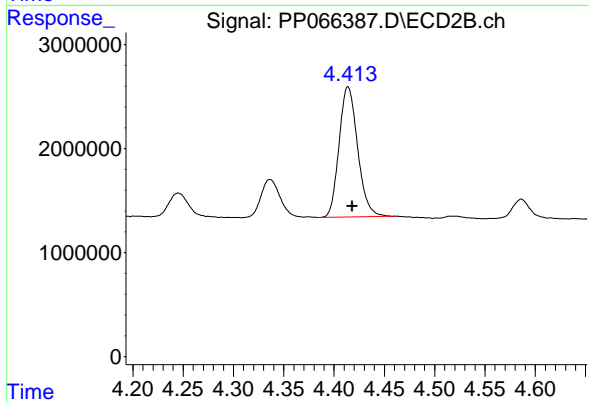
#9 AR-1221-2

R.T.: 4.336 min
 Delta R.T.: -0.003 min
 Response: 4846248
 Conc: 280.75 ng/ml



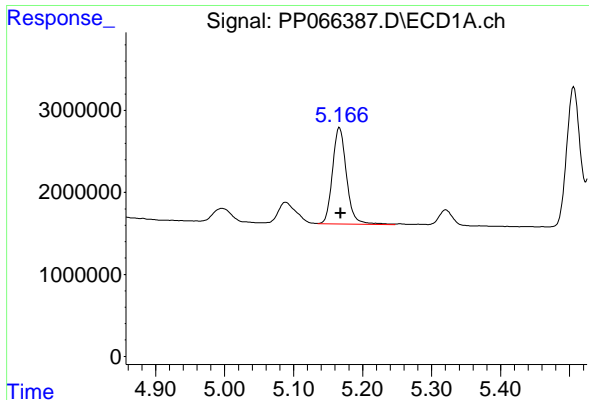
#10 AR-1221-3

R.T.: 5.166 min
 Delta R.T.: -0.002 min
 Response: 16652789
 Conc: 325.07 ng/ml



#10 AR-1221-3

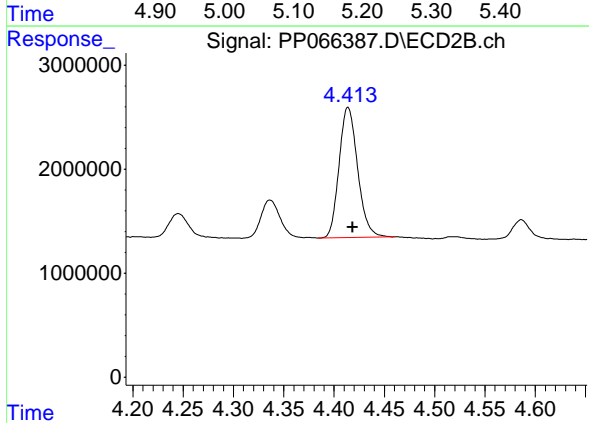
R.T.: 4.414 min
 Delta R.T.: -0.004 min
 Response: 16104504
 Conc: 318.57 ng/ml



#11 AR-1232-1

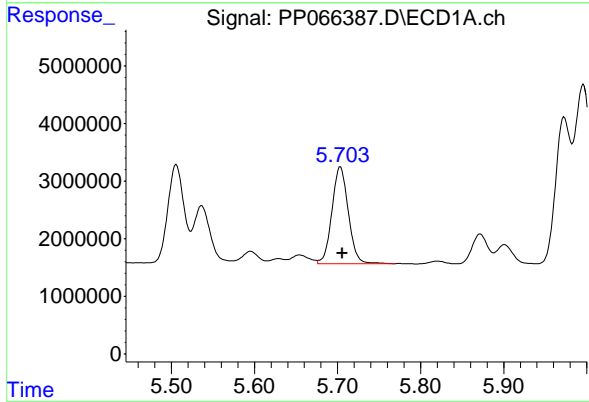
R.T.: 5.166 min
 Delta R.T.: -0.002 min
 Response: 16652789
 Conc: 380.57 ng/ml

Instrument :
 ECD_P
 ClientSampleId :
 AR1242CCC500



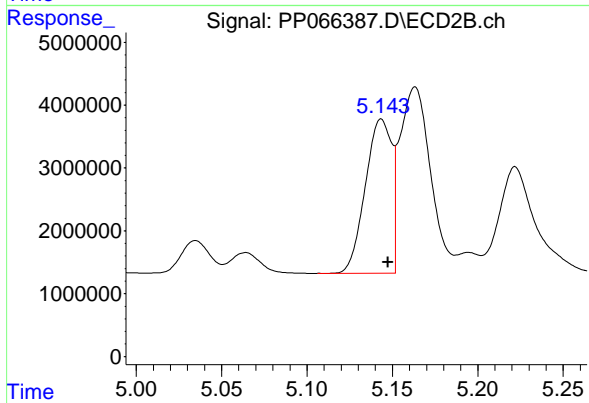
#11 AR-1232-1

R.T.: 4.414 min
 Delta R.T.: -0.004 min
 Response: 16104504
 Conc: 377.33 ng/ml



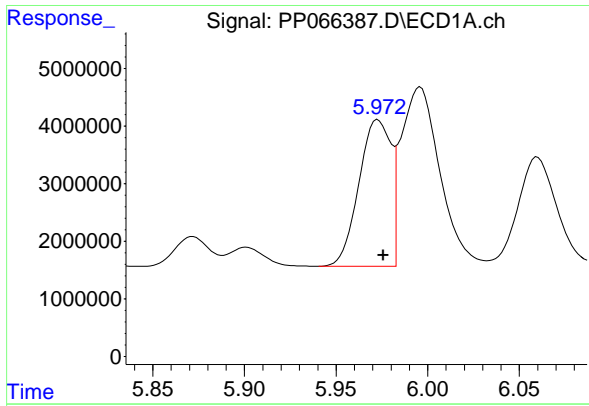
#12 AR-1232-2

R.T.: 5.703 min
 Delta R.T.: -0.002 min
 Response: 23033946
 Conc: 891.42 ng/ml



#12 AR-1232-2

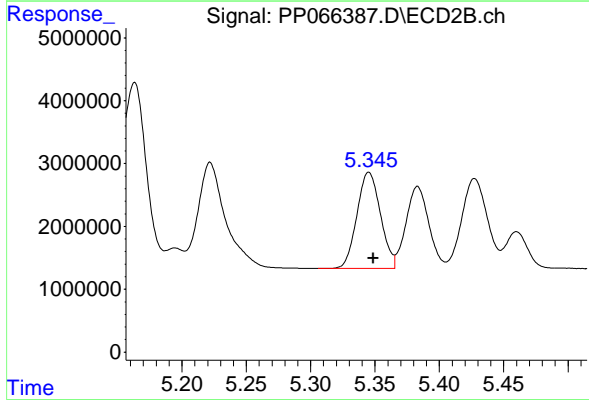
R.T.: 5.144 min
 Delta R.T.: -0.004 min
 Response: 26266691
 Conc: 890.62 ng/ml



#13 AR-1232-3

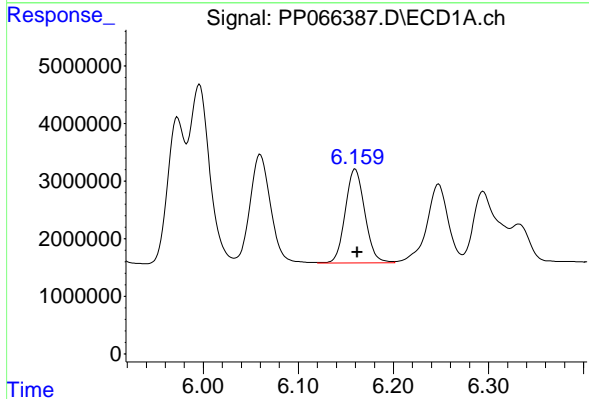
R.T.: 5.973 min
 Delta R.T.: -0.003 min
 Response: 30845748
 Conc: 912.11 ng/ml

Instrument :
 ECD_P
 ClientSampleId :
 AR1242CCC500



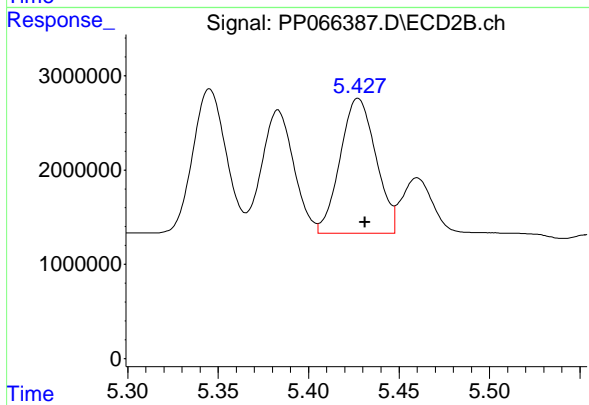
#13 AR-1232-3

R.T.: 5.345 min
 Delta R.T.: -0.004 min
 Response: 19497330
 Conc: 875.41 ng/ml



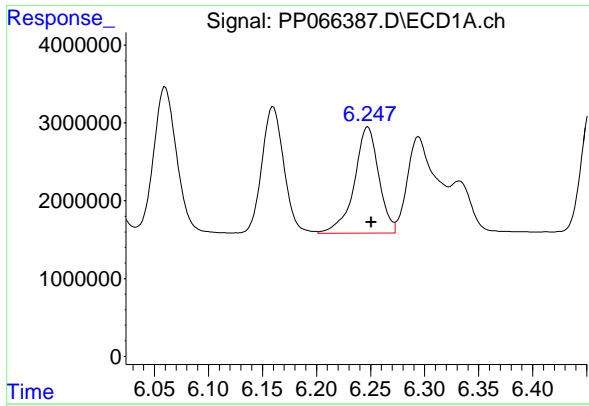
#14 AR-1232-4

R.T.: 6.160 min
 Delta R.T.: -0.002 min
 Response: 23153791
 Conc: 893.23 ng/ml



#14 AR-1232-4

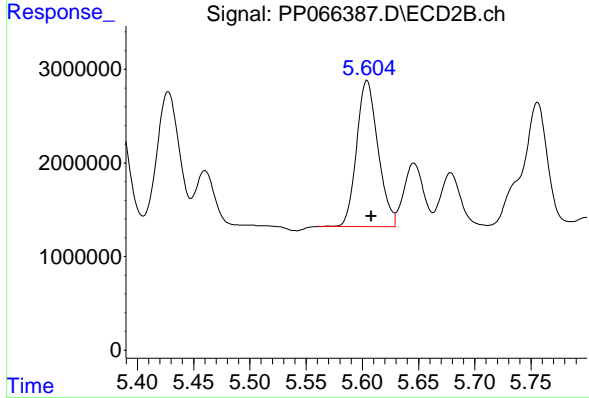
R.T.: 5.427 min
 Delta R.T.: -0.004 min
 Response: 19691967
 Conc: 979.39 ng/ml



#15 AR-1232-5

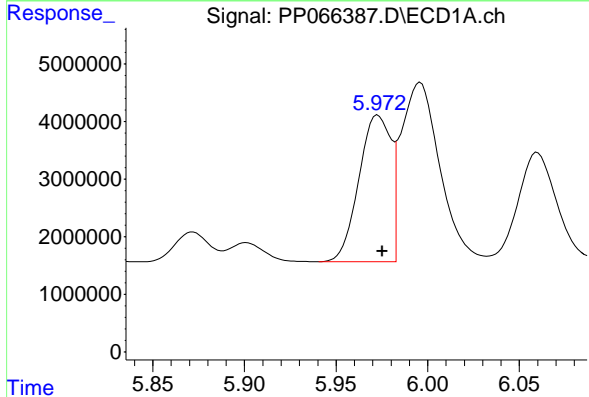
R.T.: 6.247 min
 Delta R.T.: -0.003 min
 Response: 21440080
 Conc: 988.90 ng/ml

Instrument :
 ECD_P
 ClientSampleId :
 AR1242CCC500



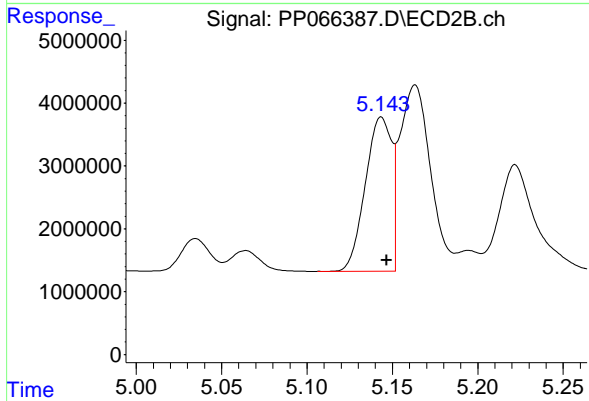
#15 AR-1232-5

R.T.: 5.604 min
 Delta R.T.: -0.004 min
 Response: 20646894
 Conc: 969.33 ng/ml



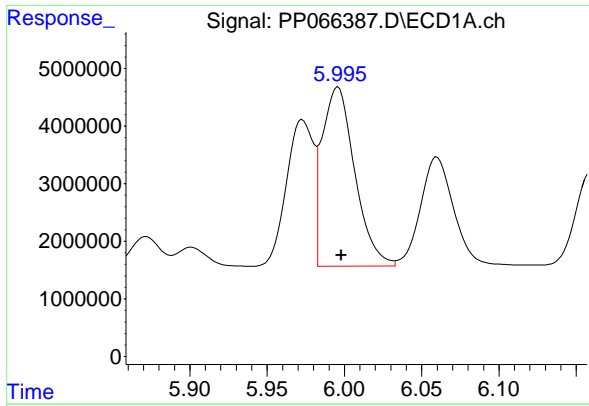
#16 AR-1242-1

R.T.: 5.973 min
 Delta R.T.: -0.003 min
 Response: 30845748
 Conc: 555.69 ng/ml



#16 AR-1242-1

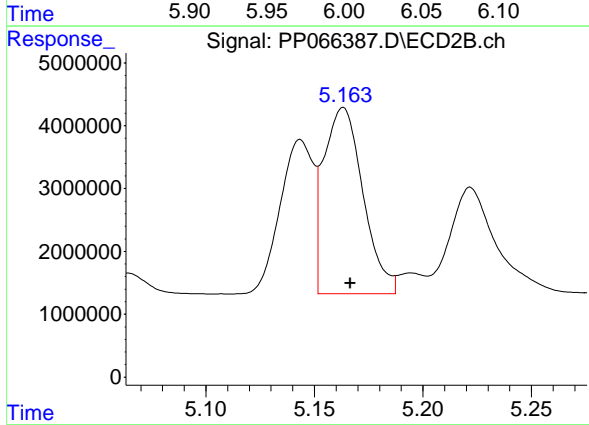
R.T.: 5.144 min
 Delta R.T.: -0.003 min
 Response: 26266691
 Conc: 502.51 ng/ml



#17 AR-1242-2

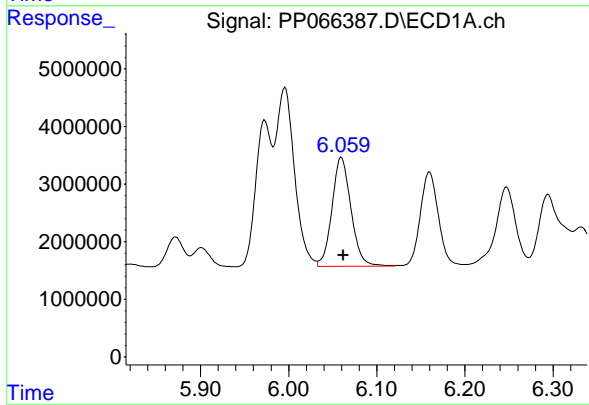
R.T.: 5.996 min
 Delta R.T.: -0.002 min
 Response: 45805029
 Conc: 511.84 ng/ml

Instrument :
 ECD_P
 ClientSampleId :
 AR1242CCC500



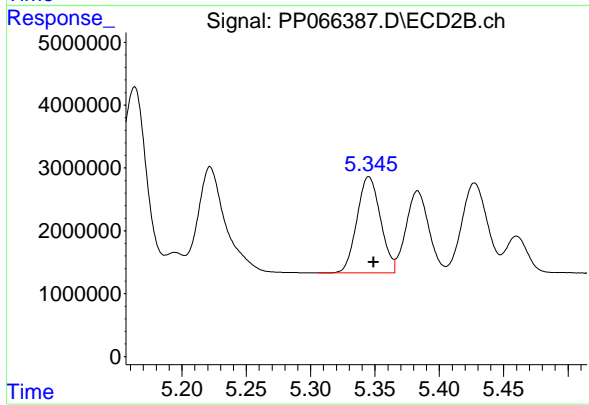
#17 AR-1242-2

R.T.: 5.163 min
 Delta R.T.: -0.003 min
 Response: 37256010
 Conc: 515.78 ng/ml



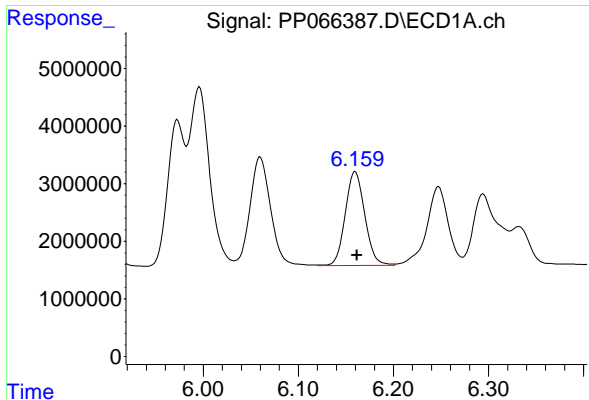
#18 AR-1242-3

R.T.: 6.060 min
 Delta R.T.: -0.002 min
 Response: 28345335
 Conc: 516.37 ng/ml



#18 AR-1242-3

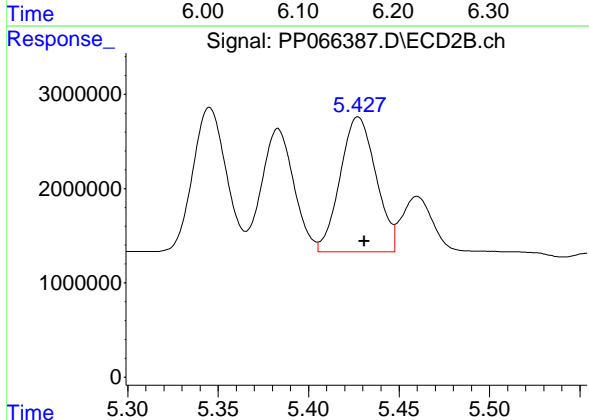
R.T.: 5.345 min
 Delta R.T.: -0.004 min
 Response: 19497330
 Conc: 509.58 ng/ml



#19 AR-1242-4

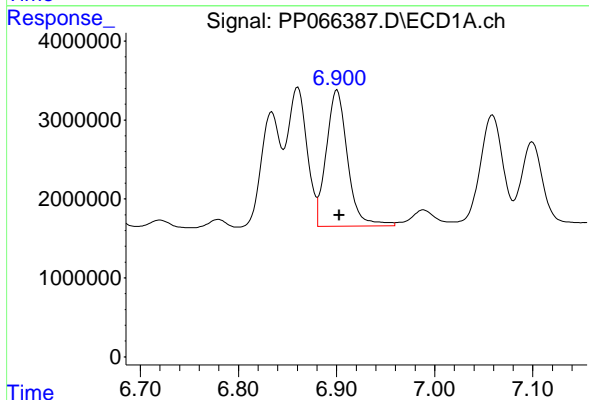
R.T.: 6.160 min
 Delta R.T.: -0.002 min
 Response: 23153791
 Conc: 505.67 ng/ml

Instrument :
 ECD_P
 ClientSampleId :
 AR1242CCC500



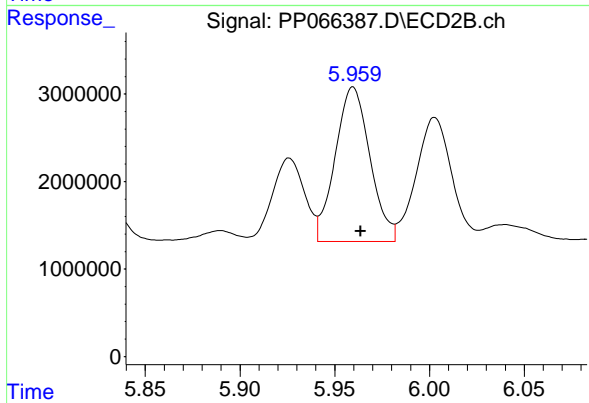
#19 AR-1242-4

R.T.: 5.427 min
 Delta R.T.: -0.004 min
 Response: 19691967
 Conc: 518.83 ng/ml



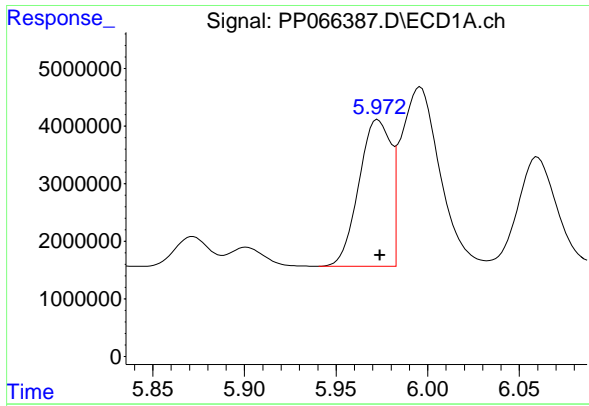
#20 AR-1242-5

R.T.: 6.901 min
 Delta R.T.: -0.002 min
 Response: 26016993
 Conc: 523.06 ng/ml



#20 AR-1242-5

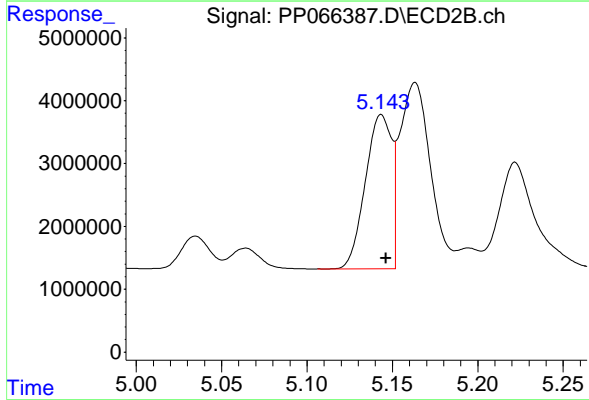
R.T.: 5.960 min
 Delta R.T.: -0.004 min
 Response: 22538431
 Conc: 499.60 ng/ml



#21 AR-1248-1

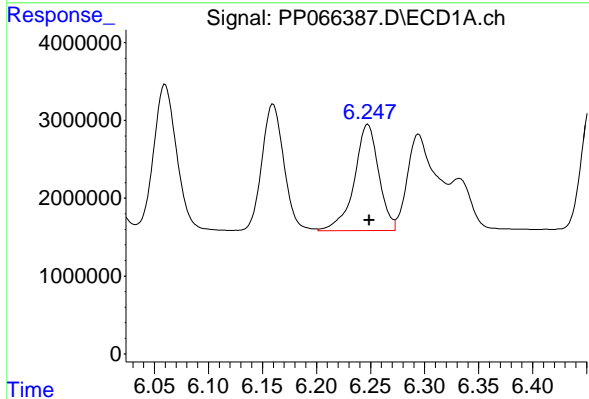
R.T.: 5.973 min
 Delta R.T.: -0.001 min
 Response: 30845748
 Conc: 632.88 ng/ml

Instrument :
 ECD_P
 ClientSampleId :
 AR1242CCC500



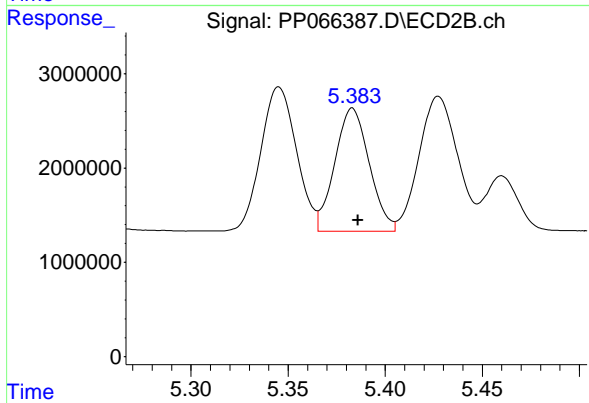
#21 AR-1248-1

R.T.: 5.144 min
 Delta R.T.: -0.003 min
 Response: 26266691
 Conc: 637.54 ng/ml



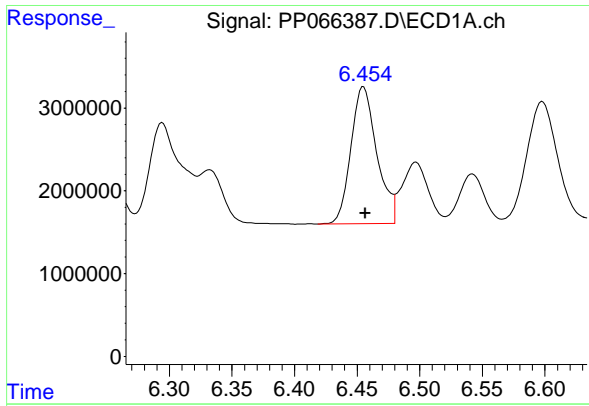
#22 AR-1248-2

R.T.: 6.247 min
 Delta R.T.: -0.001 min
 Response: 21440080
 Conc: 280.87 ng/ml



#22 AR-1248-2

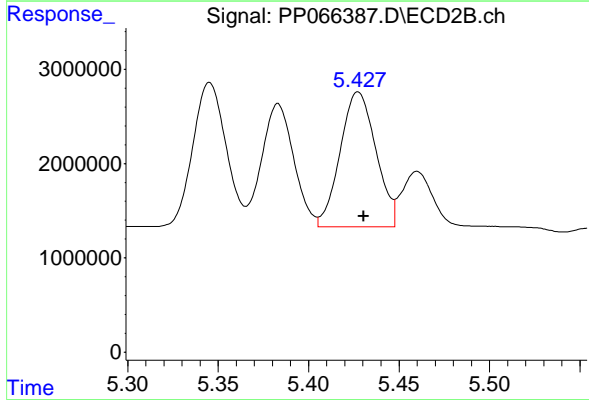
R.T.: 5.383 min
 Delta R.T.: -0.003 min
 Response: 16083874
 Conc: 283.22 ng/ml



#23 AR-1248-3

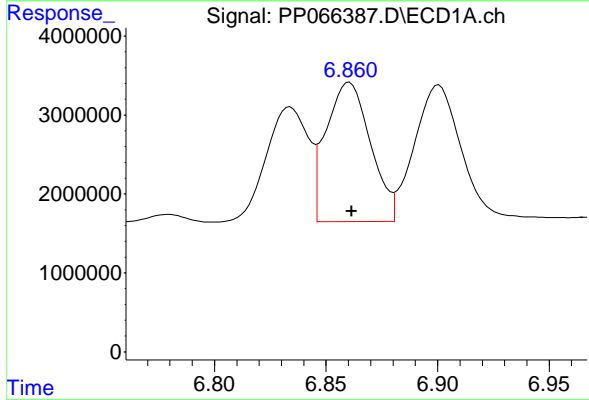
R.T.: 6.455 min
 Delta R.T.: -0.001 min
 Response: 23931711
 Conc: 293.83 ng/ml

Instrument :
 ECD_P
 ClientSampleId :
 AR1242CCC500



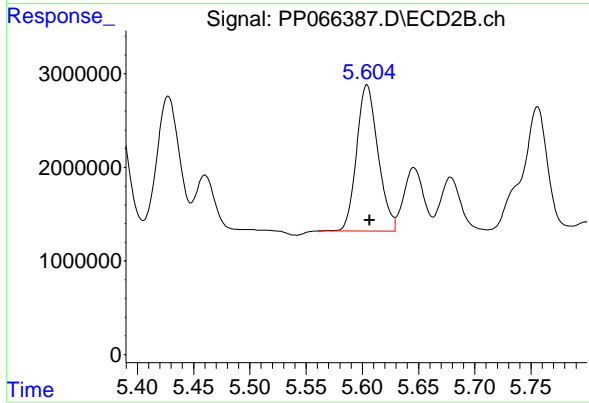
#23 AR-1248-3

R.T.: 5.427 min
 Delta R.T.: -0.003 min
 Response: 19691967
 Conc: 333.96 ng/ml



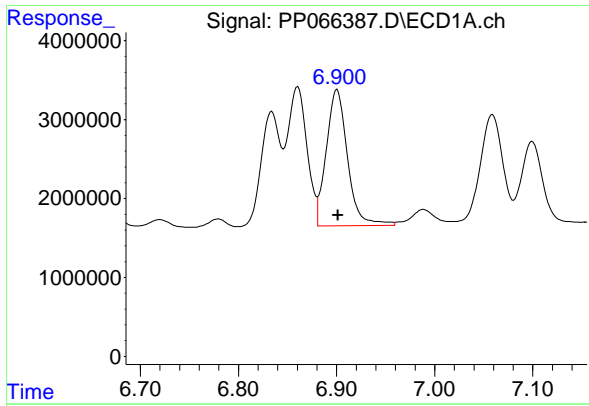
#24 AR-1248-4

R.T.: 6.860 min
 Delta R.T.: -0.001 min
 Response: 24425561
 Conc: 262.24 ng/ml



#24 AR-1248-4

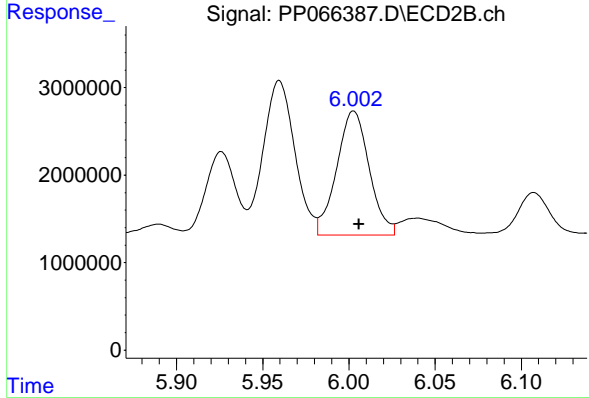
R.T.: 5.604 min
 Delta R.T.: -0.002 min
 Response: 20646894
 Conc: 301.00 ng/ml



#25 AR-1248-5

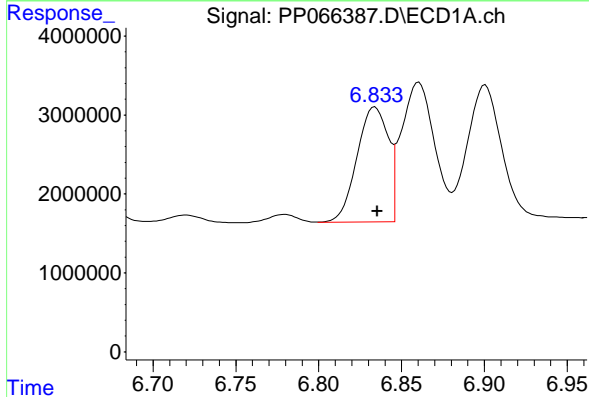
R.T.: 6.901 min
 Delta R.T.: 0.000 min
 Response: 26016993
 Conc: 281.99 ng/ml

Instrument :
 ECD_P
 ClientSampleId :
 AR1242CCC500



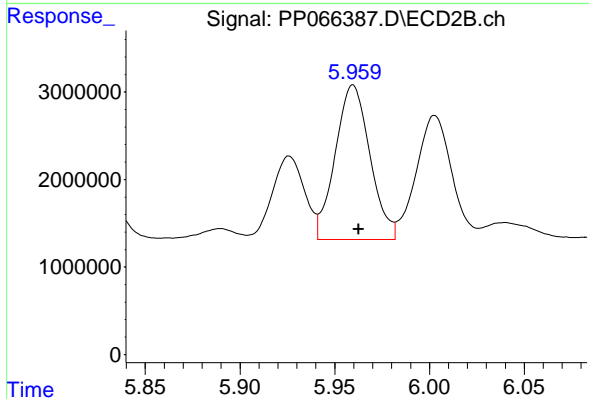
#25 AR-1248-5

R.T.: 6.003 min
 Delta R.T.: -0.003 min
 Response: 18671984
 Conc: 297.72 ng/ml



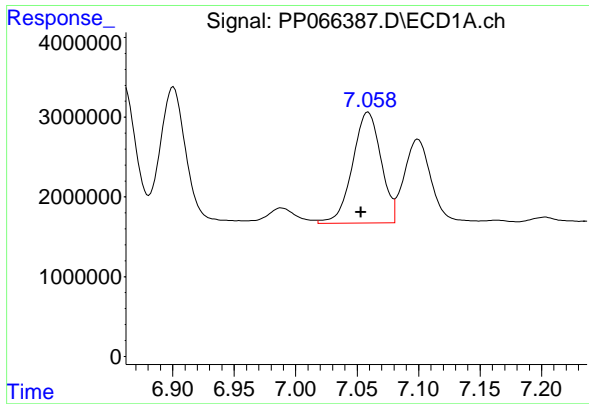
#26 AR-1254-1

R.T.: 6.834 min
 Delta R.T.: -0.001 min
 Response: 19166457
 Conc: 204.94 ng/ml



#26 AR-1254-1

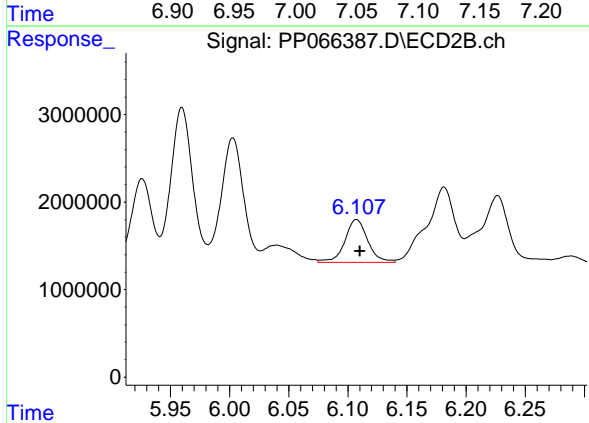
R.T.: 5.960 min
 Delta R.T.: -0.003 min
 Response: 22538431
 Conc: 236.82 ng/ml



#27 AR-1254-2

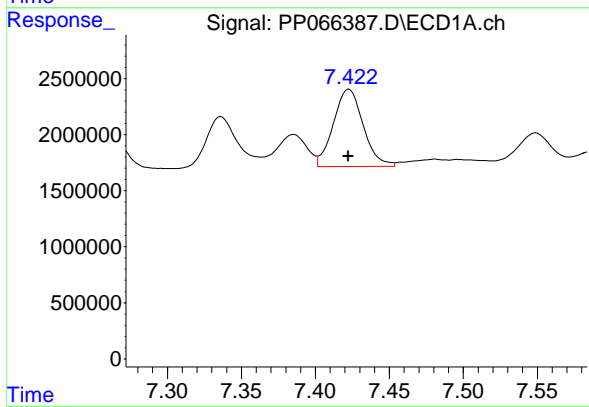
R.T.: 7.059 min
 Delta R.T.: 0.006 min
 Response: 22461702
 Conc: 159.24 ng/ml

Instrument :
 ECD_P
 ClientSampleId :
 AR1242CCC500



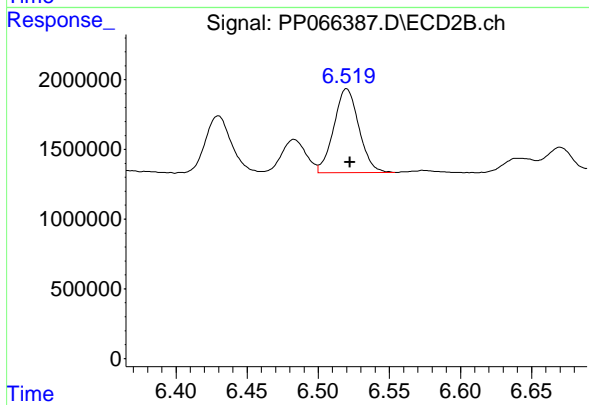
#27 AR-1254-2

R.T.: 6.107 min
 Delta R.T.: -0.003 min
 Response: 6568168
 Conc: 79.09 ng/ml



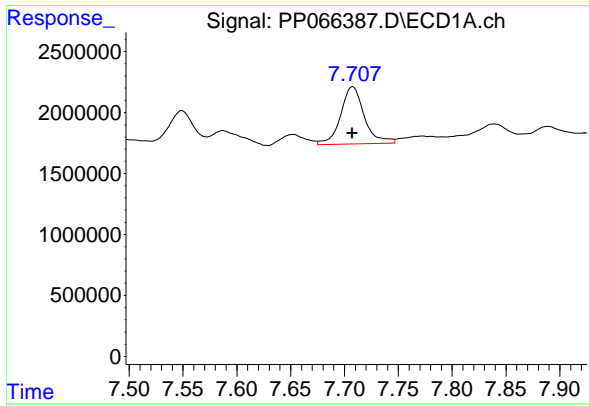
#28 AR-1254-3

R.T.: 7.423 min
 Delta R.T.: 0.000 min
 Response: 9669777
 Conc: 74.56 ng/ml



#28 AR-1254-3

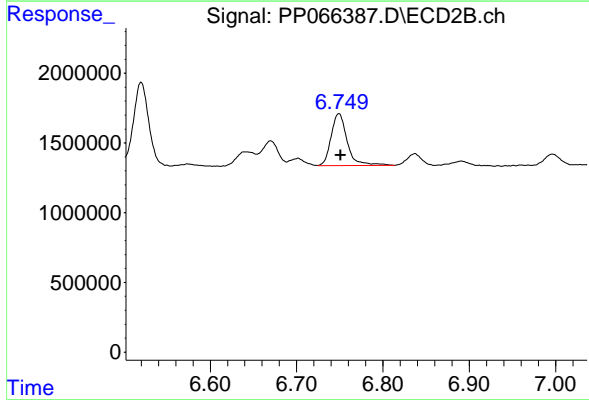
R.T.: 6.520 min
 Delta R.T.: -0.002 min
 Response: 7422900
 Conc: 59.41 ng/ml



#29 AR-1254-4

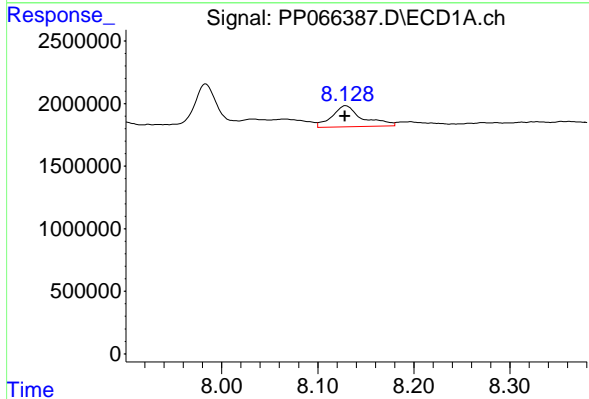
R.T.: 7.708 min
 Delta R.T.: 0.000 min
 Response: 7160314
 Conc: 78.09 ng/ml

Instrument :
 ECD_P
 ClientSampleId :
 AR1242CCC500



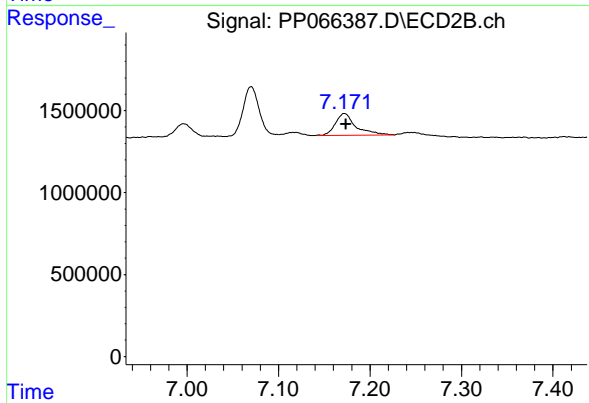
#29 AR-1254-4

R.T.: 6.749 min
 Delta R.T.: -0.002 min
 Response: 4833936
 Conc: 70.65 ng/ml



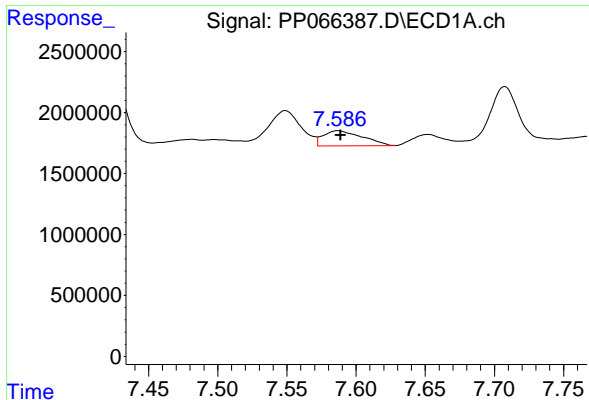
#30 AR-1254-5

R.T.: 8.129 min
 Delta R.T.: 0.000 min
 Response: 3728808
 Conc: 37.52 ng/ml



#30 AR-1254-5

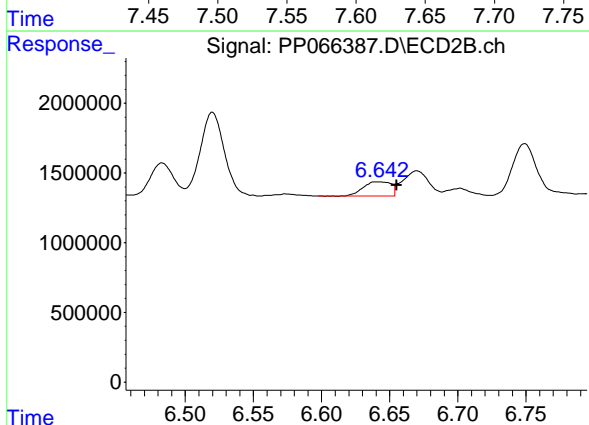
R.T.: 7.172 min
 Delta R.T.: -0.002 min
 Response: 2087528
 Conc: 20.79 ng/ml



#31 AR-1260-1

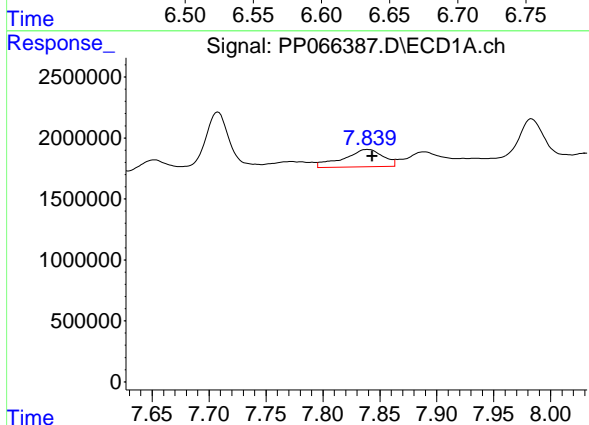
R.T.: 7.587 min
 Delta R.T.: -0.002 min
 Response: 2430239
 Conc: 22.97 ng/ml

Instrument :
 ECD_P
 ClientSampleId :
 AR1242CCC500



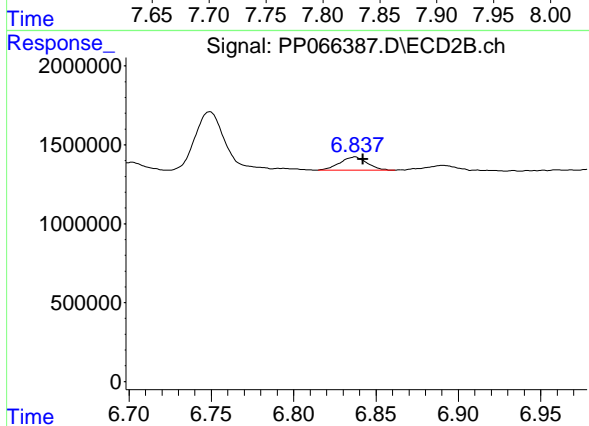
#31 AR-1260-1

R.T.: 6.642 min
 Delta R.T.: -0.013 min
 Response: 1433931
 Conc: 16.77 ng/ml



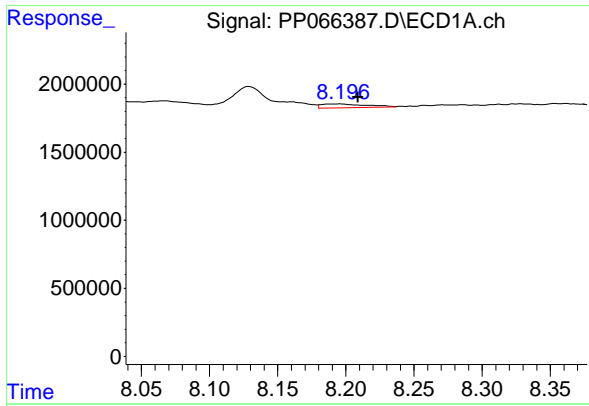
#32 AR-1260-2

R.T.: 7.840 min
 Delta R.T.: -0.004 min
 Response: 3432624
 Conc: 29.79 ng/ml



#32 AR-1260-2

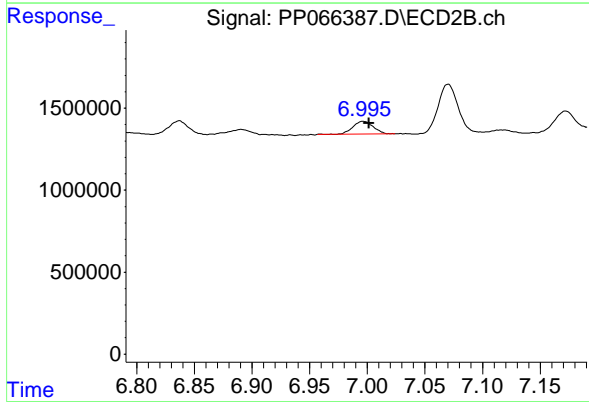
R.T.: 6.837 min
 Delta R.T.: -0.005 min
 Response: 973892
 Conc: 10.01 ng/ml



#33 AR-1260-3

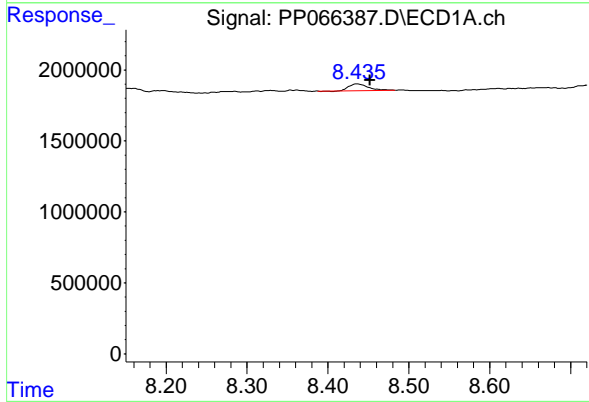
R.T.: 8.196 min
 Delta R.T.: -0.013 min
 Response: 684566
 Conc: 8.63 ng/ml

Instrument :
 ECD_P
 ClientSampleId :
 AR1242CCC500



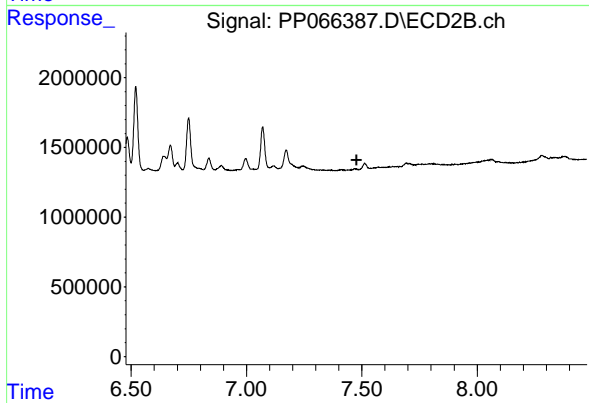
#33 AR-1260-3

R.T.: 6.996 min
 Delta R.T.: -0.005 min
 Response: 947175
 Conc: 10.32 ng/ml



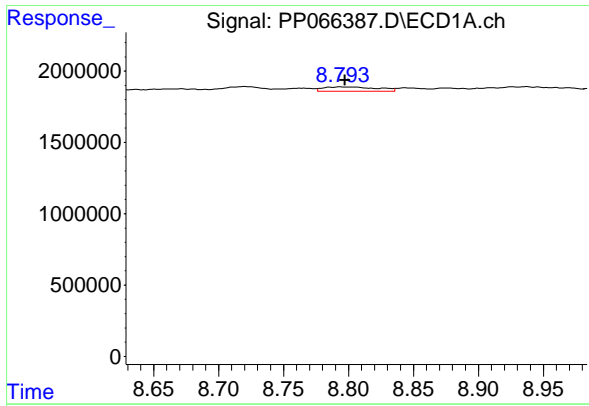
#34 AR-1260-4

R.T.: 8.436 min
 Delta R.T.: -0.016 min
 Response: 815647
 Conc: 9.37 ng/ml



#34 AR-1260-4

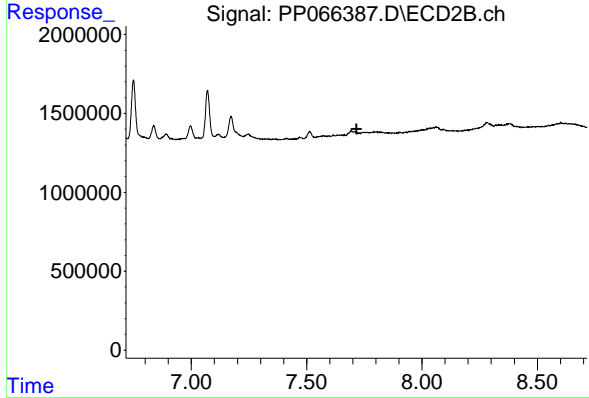
R.T.: 0.000 min
 Exp R.T. : 7.477 min
 Response: 0
 Conc: N.D.



#35 AR-1260-5

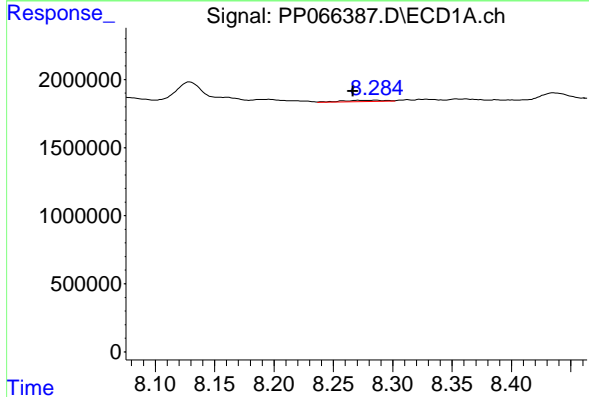
R.T.: 8.794 min
 Delta R.T.: -0.003 min
 Response: 883057
 Conc: 5.71 ng/ml

Instrument :
 ECD_P
 ClientSampleId :
 AR1242CCC500



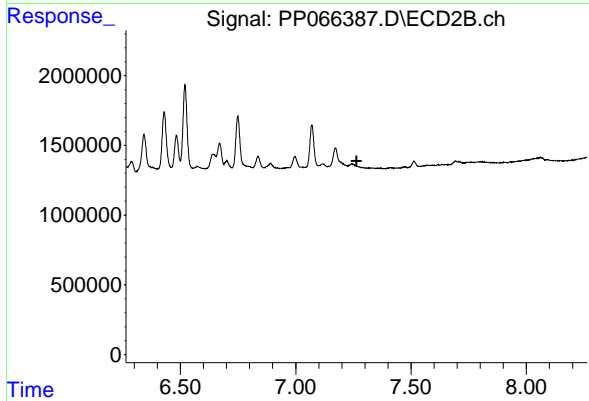
#35 AR-1260-5

R.T.: 0.000 min
 Exp R.T. : 7.716 min
 Response: 0
 Conc: N.D.



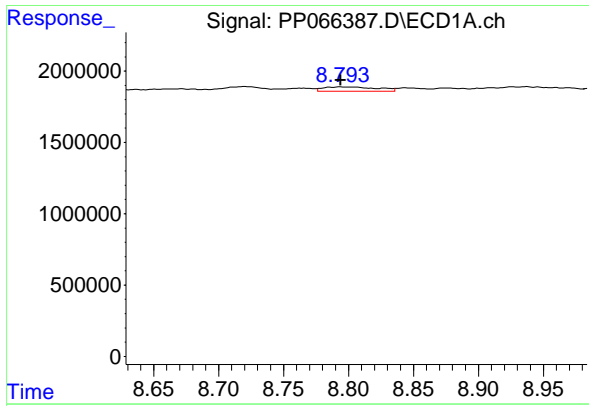
#36 AR-1262-1

R.T.: 8.285 min
 Delta R.T.: 0.019 min
 Response: 250963
 Conc: 4.45 ng/ml



#36 AR-1262-1

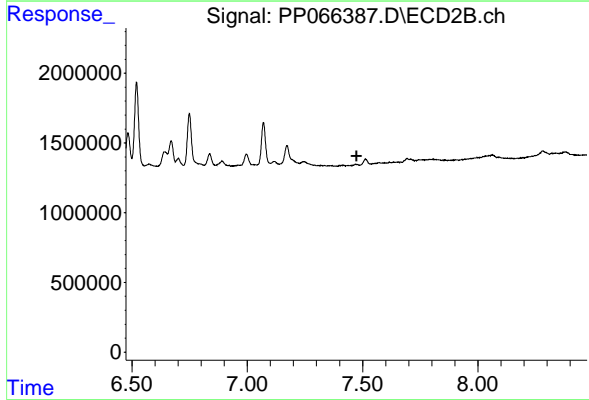
R.T.: 0.000 min
 Exp R.T. : 7.263 min
 Response: 0
 Conc: N.D.



#37 AR-1262-2

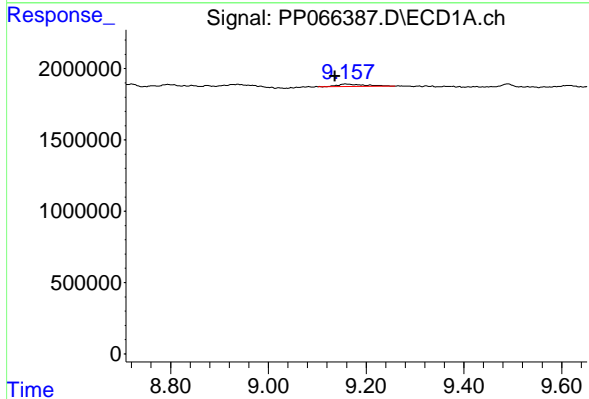
R.T.: 8.794 min
 Delta R.T.: 0.000 min
 Response: 883057
 Conc: 4.67 ng/ml

Instrument :
 ECD_P
 ClientSampleId :
 AR1242CCC500



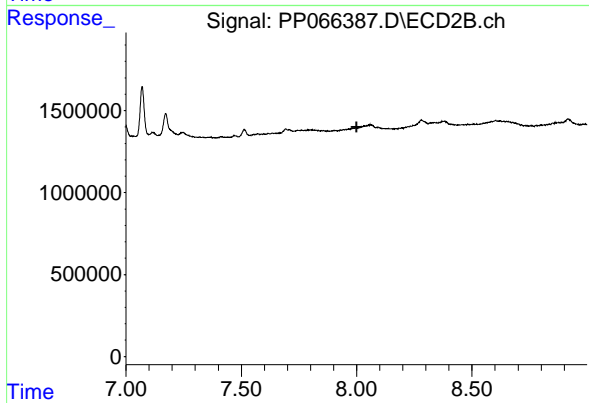
#37 AR-1262-2

R.T.: 0.000 min
 Exp R.T. : 7.474 min
 Response: 0
 Conc: N.D.



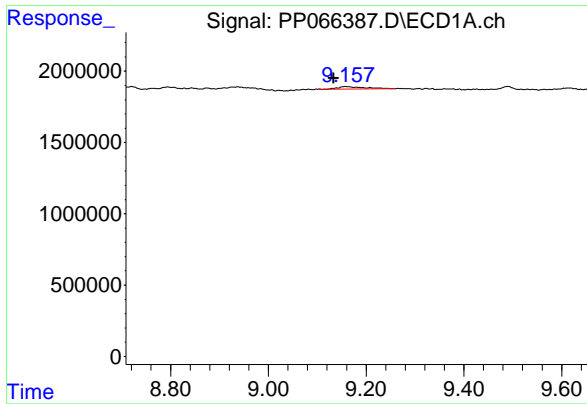
#38 AR-1262-3

R.T.: 9.158 min
 Delta R.T.: 0.022 min
 Response: 662895
 Conc: 5.08 ng/ml



#38 AR-1262-3

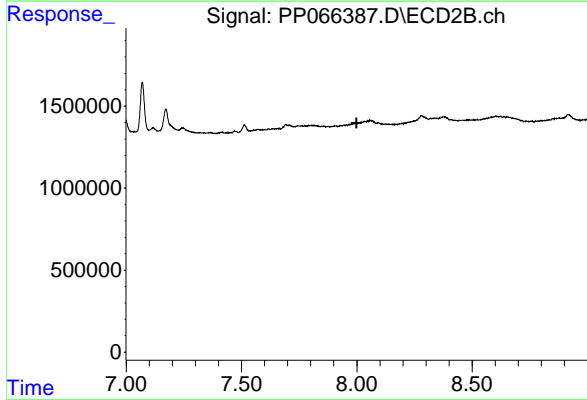
R.T.: 0.000 min
 Exp R.T. : 7.999 min
 Response: 0
 Conc: N.D.



#41 AR-1268-1

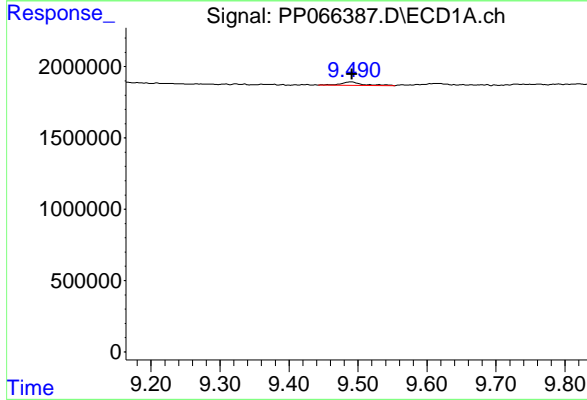
R.T.: 9.158 min
 Delta R.T.: 0.024 min
 Response: 662895
 Conc: 2.83 ng/ml

Instrument : ECD_P
 ClientSampleId : AR1242CCC500



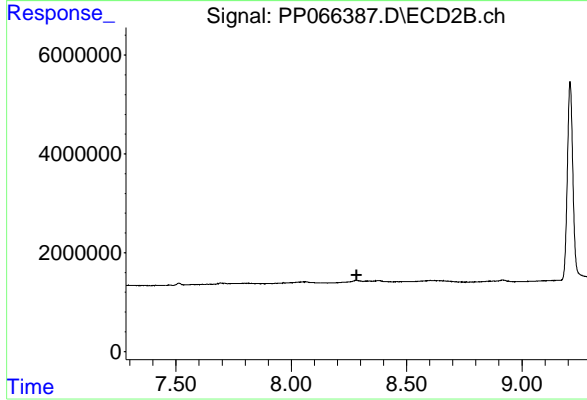
#41 AR-1268-1

R.T.: 0.000 min
 Exp R.T. : 7.999 min
 Response: 0
 Conc: N.D.



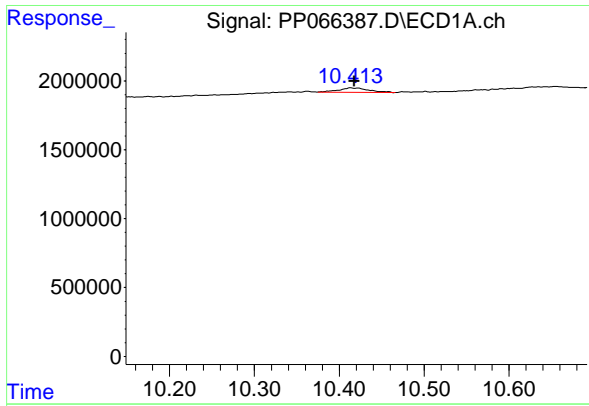
#43 AR-1268-3

R.T.: 9.490 min
 Delta R.T.: -0.001 min
 Response: 504908
 Conc: 2.64 ng/ml



#43 AR-1268-3

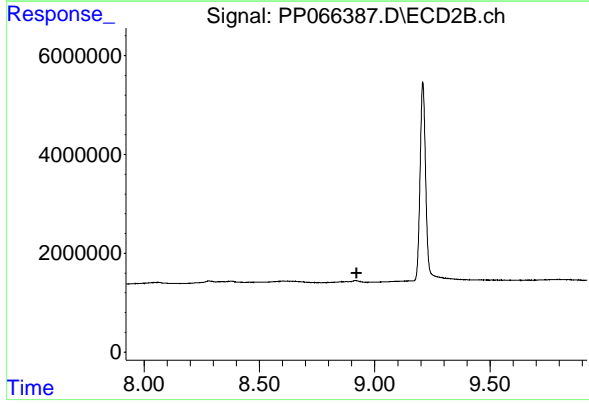
R.T.: 0.000 min
 Exp R.T. : 8.283 min
 Response: 0
 Conc: N.D.



#45 AR-1268-5

R.T.: 10.414 min
Delta R.T.: -0.003 min
Response: 810378
Conc: 1.32 ng/ml

Instrument :
ECD_P
ClientSampleId :
AR1242CCC500



#45 AR-1268-5

R.T.: 0.000 min
Exp R.T. : 8.921 min
Response: 0
Conc: N.D.