

Data Path : Z:\pestpcbsrv\HPCHEM1\ECD_P\Data\PP071819\
 Data File : PP030289.D
 Signal(s) : Signal #1: ECD1A.CH Signal #2: ECD2B.CH
 Acq On : 18 Jul 2019 14:35
 Operator : SM\MA
 Sample : HSTDICV750
 Misc :
 ALS Vial : 8 Sample Multiplier: 1

Instrument :
 ECD_P
 ClientSampleId :
 ICVPP071819

Integration File signal 1: autoint1.e
 Integration File signal 2: autoint2.e
 Quant Time: Jul 19 03:33:37 2019
 Quant Method : Z:\pestpcbsrv\HPCHEM1\ECD_P\methods\PP071819.M
 Quant Title : 8080.M
 QLast Update : Fri Jul 19 03:30:39 2019
 Response via : Initial Calibration
 Integrator: ChemStation 6890 Scale Mode: Large solvent peaks clipped

Volume Inj. : 2 µl
 Signal #1 Phase : ZB-CLPesticides-1 Signal #2 Phase: ZB-CLPesticides-2
 Signal #1 Info : 30M x 0.32mm x0.5 Signal #2 Info : 30M x 0.32mm x 0.25µm

	Compound	RT#1	RT#2	Resp#1	Resp#2	ng/ml	ng/ml

System Monitoring Compounds							
4) S	2,4-DCAA	11.118	11.233	898.5E6	733.9E6	747.971	762.203
Target Compounds							
1) T	Dalapon	2.611	2.411	528.6E6	380.2E6	695.558	696.363
2) T	3,5-DICHL...	9.534	9.360	1459.4E6	891.8E6	701.871	708.739
3) T	4-Nitroph...	10.687	10.388	809.8E6	357.2E6	686.231	703.416
5) T	DICAMBA	11.427	11.527	3917.1E6	2773.7E6	713.707	719.289
6) T	MCPP	11.783	11.745	231.9E6	162.0E6	72.951	73.456
7) T	MCPA	12.036	12.133	304.9E6	236.5E6	72.357	72.859
8) T	DICHLORPROP	12.619	12.642	883.7E6	664.7E6	709.838	716.990
9) T	2,4-D	12.977	13.124	845.8E6	657.7E6	732.387	732.798
10) T	Pentachlo...	13.338	13.683	13042.2E6	8929.7E6	716.771	711.861
11) T	2,4,5-TP ...	14.224	14.283	4915.2E6	3701.1E6	727.586	726.485
12) T	2,4,5-T	14.621	14.825	3928.9E6	2936.3E6	754.085	753.437
13) T	2,4-DB	15.365	15.506	598.9E6	460.0E6	719.390	729.529
14) T	DINOSEB	16.829	15.912	2901.3E6	2215.0E6	750.043	749.944
15) T	Picloram	16.607	17.227	3965.7E6	3024.4E6	733.016	743.369
16) T	DCPA	17.181	17.124	5762.2E6	4324.1E6	746.840	737.147

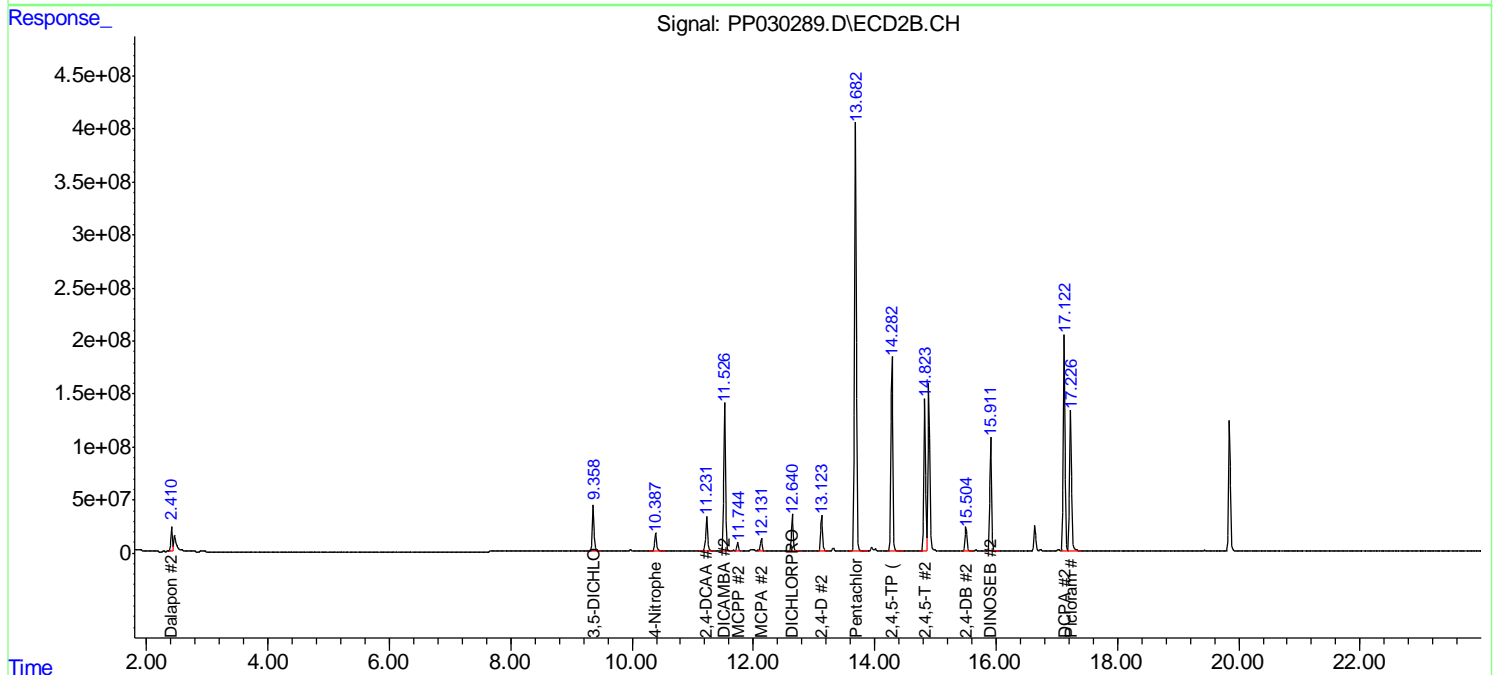
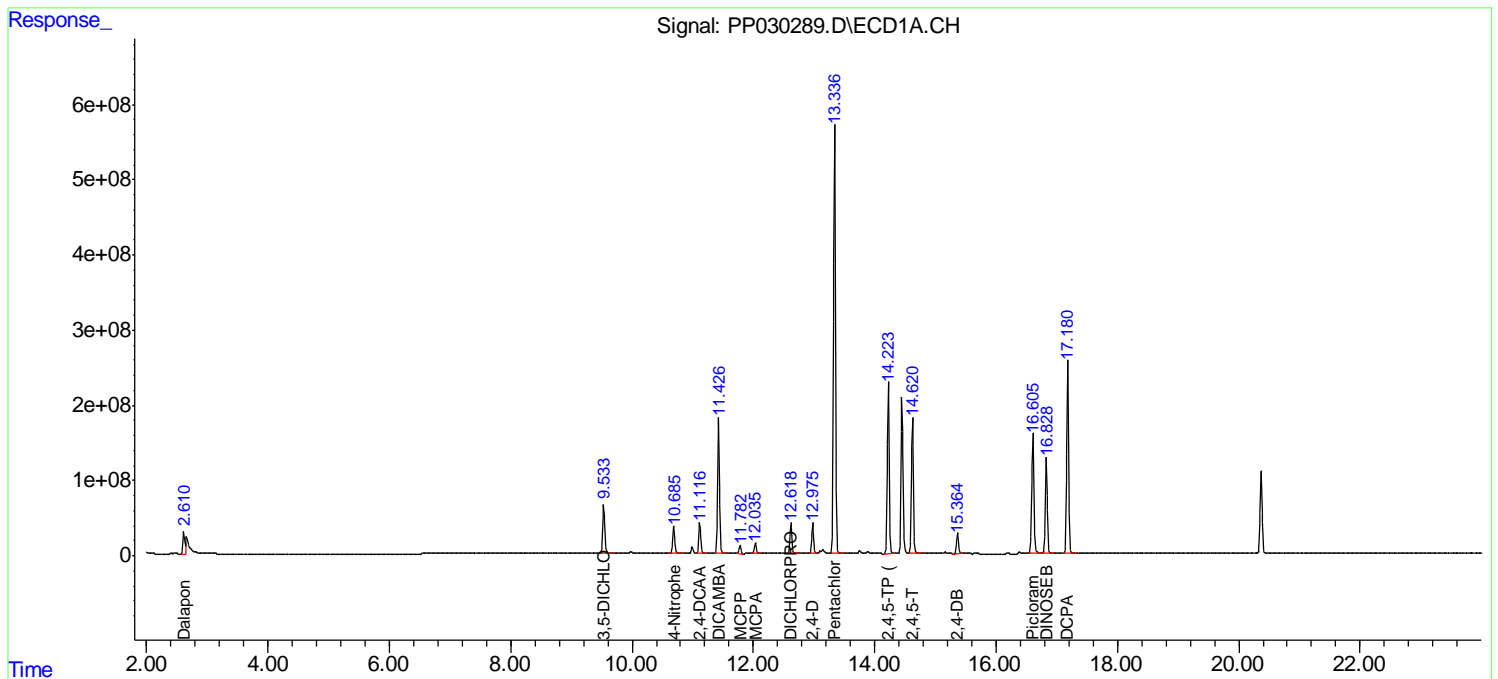
(f)=RT Delta > 1/2 Window (#)=Amounts differ by > 25% (m)=manual int.

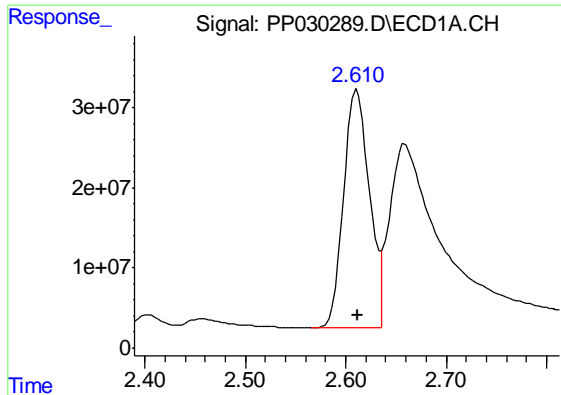
Data Path : Z:\pestpcbsrv\HPCHEM1\ECD_P\Data\PP071819\
 Data File : PP030289.D
 Signal(s) : Signal #1: ECD1A.CH Signal #2: ECD2B.CH
 Acq On : 18 Jul 2019 14:35
 Operator : SM\MA
 Sample : HSTDICV750
 Misc :
 ALS Vial : 8 Sample Multiplier: 1

Instrument :
 ECD_P
 Client Sampled :
 ICVPP071819

Integration File signal 1: autoint1.e
 Integration File signal 2: autoint2.e
 Quant Time: Jul 19 03:33:37 2019
 Quant Method : Z:\pestpcbsrv\HPCHEM1\ECD_P\methods\PP071819.M
 Quant Title : 8080.M
 QLast Update : Fri Jul 19 03:30:39 2019
 Response via : Initial Calibration
 Integrator: ChemStation 6890 Scale Mode: Large solvent peaks clipped

Volume Inj. : 2 µl
 Signal #1 Phase : ZB-CLPesticides-1 Signal #2 Phase: ZB-CLPesticides-2
 Signal #1 Info : 30M x 0.32mm x0.5 Signal #2 Info : 30M x 0.32mm x 0.25µm

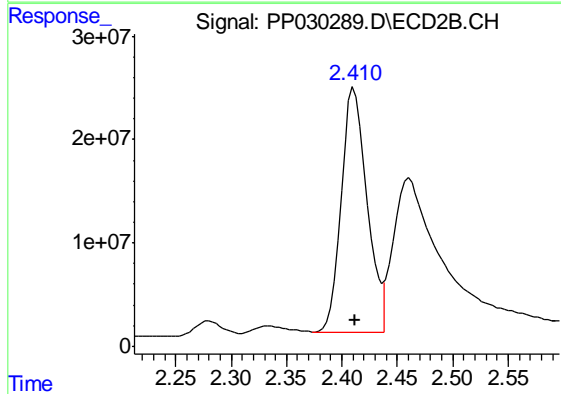




#1 Dalapon

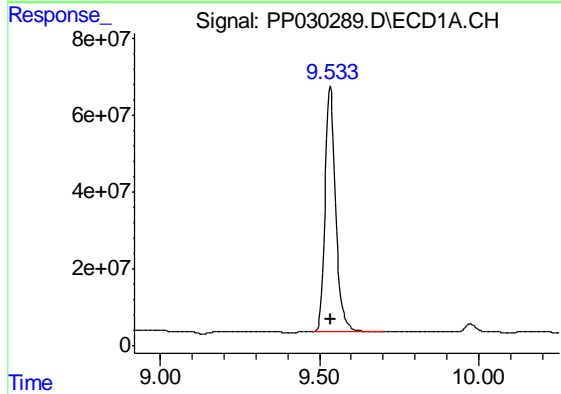
R.T.: 2.611 min
Delta R.T.: 0.000 min
Response: 528575111
Conc: 695.56 ng/ml

Instrument :
ECD_P
ClientSampleId :
ICVPP071819



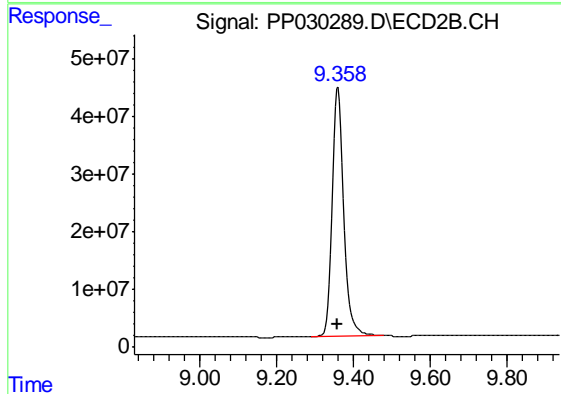
#1 Dalapon

R.T.: 2.411 min
Delta R.T.: 0.000 min
Response: 380179748
Conc: 696.36 ng/ml



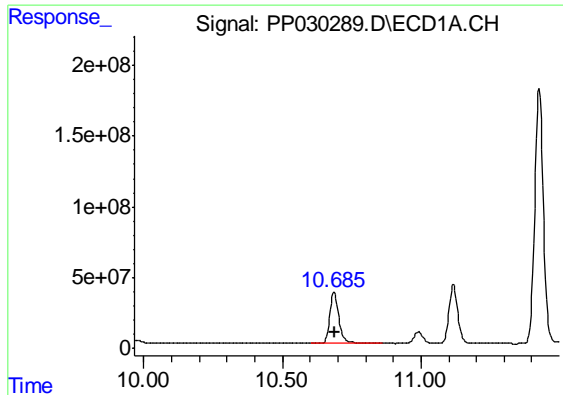
#2 3,5-DICHLOROBENZOIC ACID

R.T.: 9.534 min
Delta R.T.: 0.000 min
Response: 1459379117
Conc: 701.87 ng/ml



#2 3,5-DICHLOROBENZOIC ACID

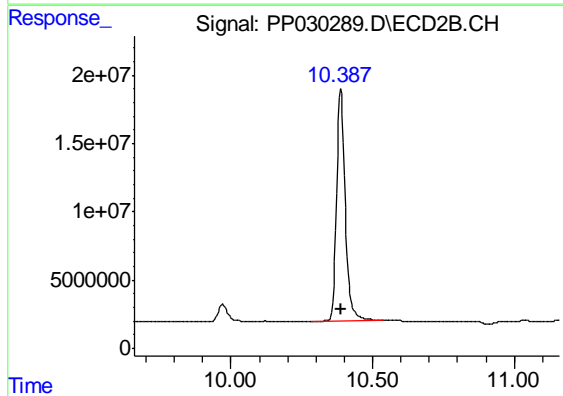
R.T.: 9.360 min
Delta R.T.: 0.000 min
Response: 891814278
Conc: 708.74 ng/ml



#3 4-Nitrophenol

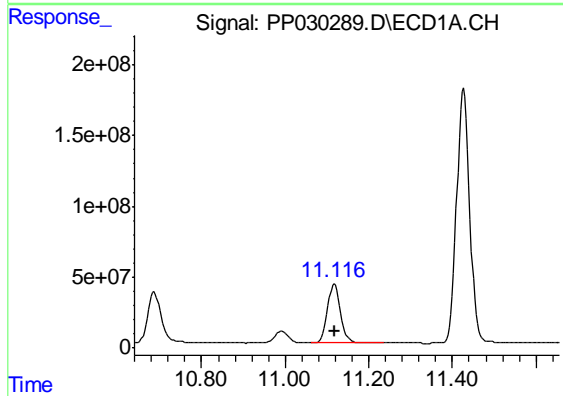
R.T.: 10.687 min
Delta R.T.: 0.000 min
Response: 809775097
Conc: 686.23 ng/ml

Instrument :
ECD_P
ClientSampleId :
ICVPP071819



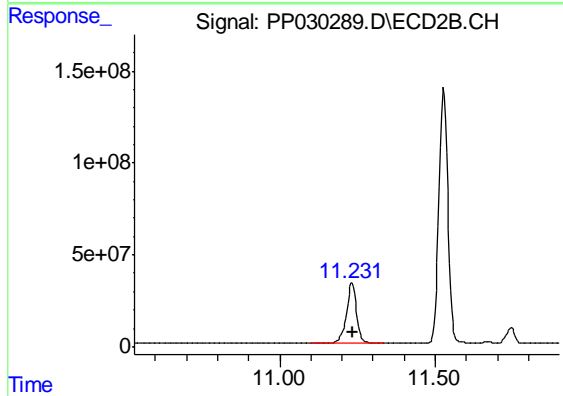
#3 4-Nitrophenol

R.T.: 10.388 min
Delta R.T.: 0.000 min
Response: 357240206
Conc: 703.42 ng/ml



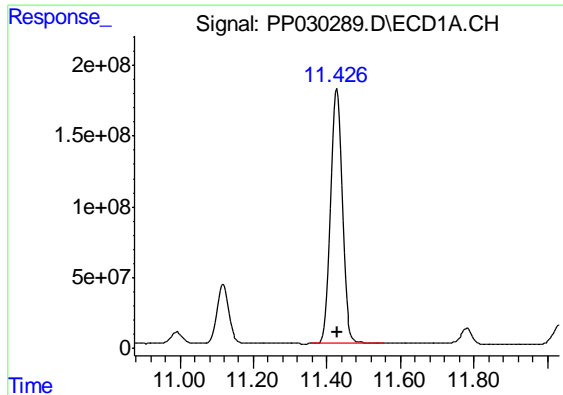
#4 2,4-DCAA

R.T.: 11.118 min
Delta R.T.: 0.000 min
Response: 898450007
Conc: 747.97 ng/ml



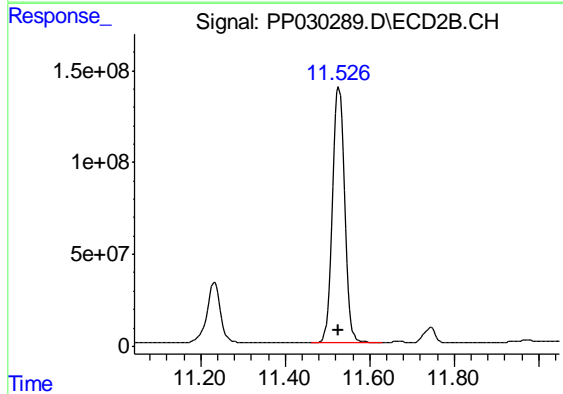
#4 2,4-DCAA

R.T.: 11.233 min
Delta R.T.: 0.000 min
Response: 733902333
Conc: 762.20 ng/ml

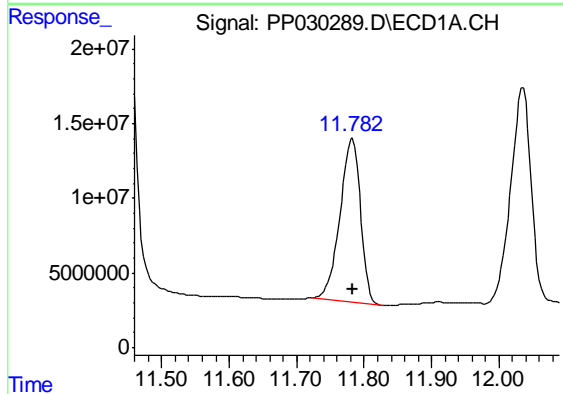


#5 DICAMBA
 R.T.: 11.427 min
 Delta R.T.: 0.000 min
 Response: 3917123389
 Conc: 713.71 ng/ml

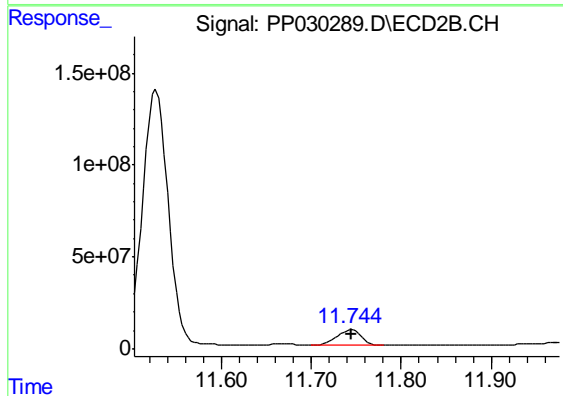
Instrument :
 ECD_P
 ClientSampleId :
 ICVPP071819



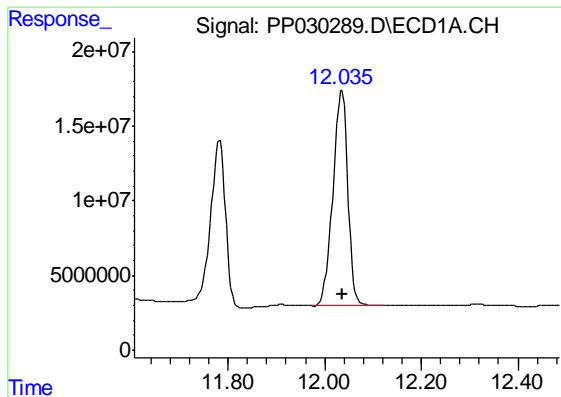
#5 DICAMBA
 R.T.: 11.527 min
 Delta R.T.: 0.000 min
 Response: 2773671307
 Conc: 719.29 ng/ml



#6 MCPP
 R.T.: 11.783 min
 Delta R.T.: 0.000 min
 Response: 231933368
 Conc: 72.95 ug/ml



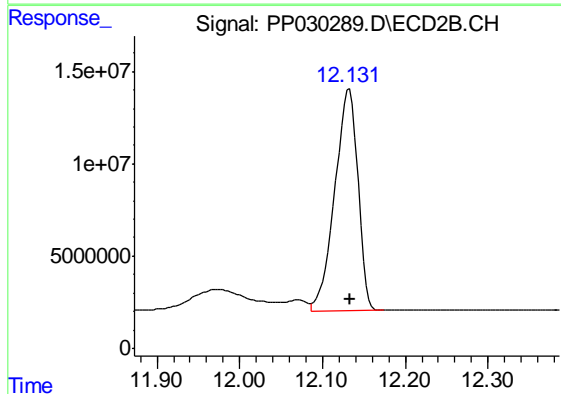
#6 MCPP
 R.T.: 11.745 min
 Delta R.T.: 0.000 min
 Response: 161958473
 Conc: 73.46 ug/ml



#7 MCPA

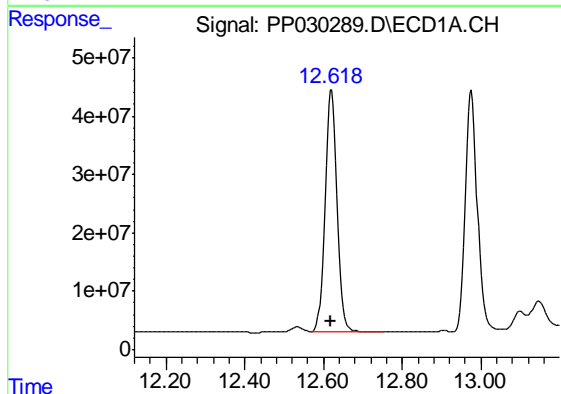
R.T.: 12.036 min
 Delta R.T.: 0.000 min
 Response: 304902786
 Conc: 72.36 ug/ml

Instrument :
 ECD_P
 ClientSampleId :
 ICVPP071819



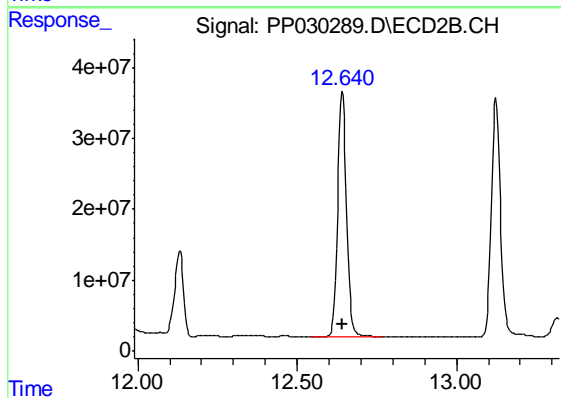
#7 MCPA

R.T.: 12.133 min
 Delta R.T.: -0.001 min
 Response: 236526409
 Conc: 72.86 ug/ml



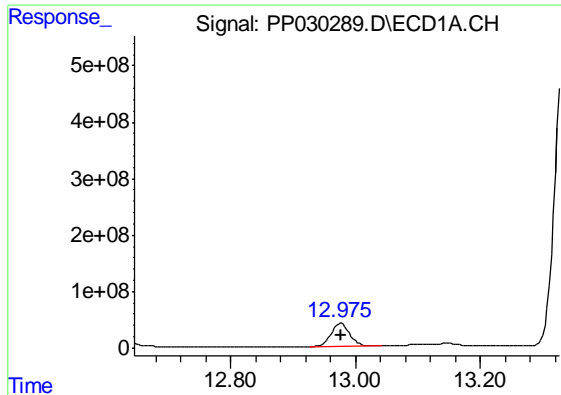
#8 DICHLORPROP

R.T.: 12.619 min
 Delta R.T.: 0.000 min
 Response: 883657642
 Conc: 709.84 ng/ml



#8 DICHLORPROP

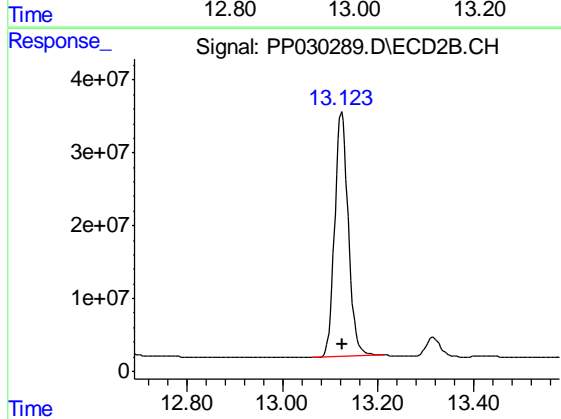
R.T.: 12.642 min
 Delta R.T.: 0.000 min
 Response: 664695035
 Conc: 716.99 ng/ml



#9 2,4-D

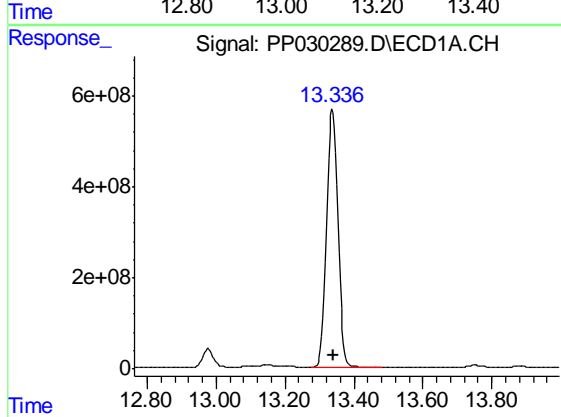
R.T.: 12.977 min
Delta R.T.: 0.000 min
Response: 845833030
Conc: 732.39 ng/ml

Instrument :
ECD_P
ClientSampleId :
ICVPP071819



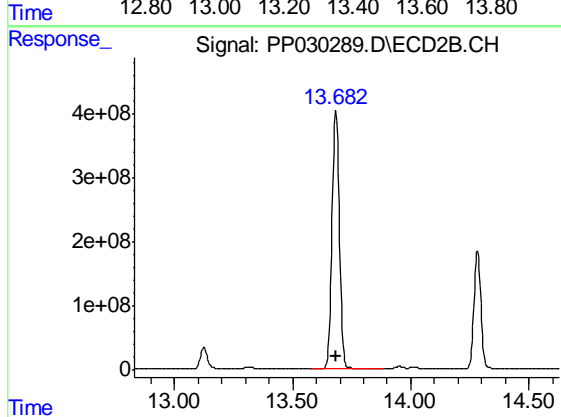
#9 2,4-D

R.T.: 13.124 min
Delta R.T.: 0.000 min
Response: 657730760
Conc: 732.80 ng/ml



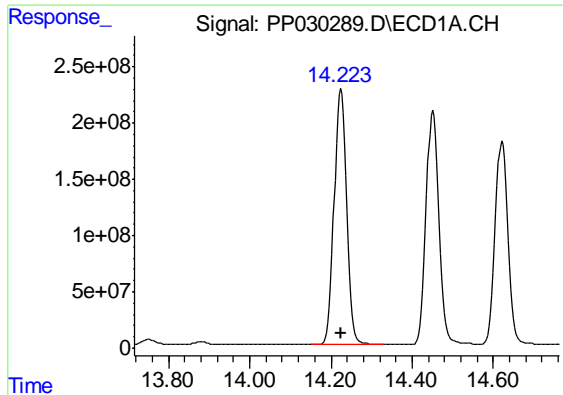
#10 Pentachlorophenol

R.T.: 13.338 min
Delta R.T.: -0.001 min
Response: 13042167206
Conc: 716.77 ng/ml



#10 Pentachlorophenol

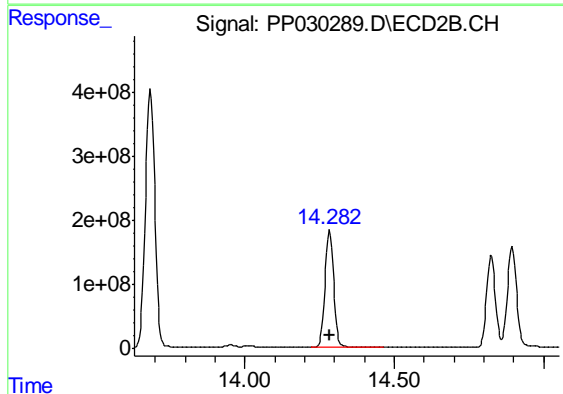
R.T.: 13.683 min
Delta R.T.: -0.001 min
Response: 8929687958
Conc: 711.86 ng/ml



#11 2,4,5-TP (SILVEX)

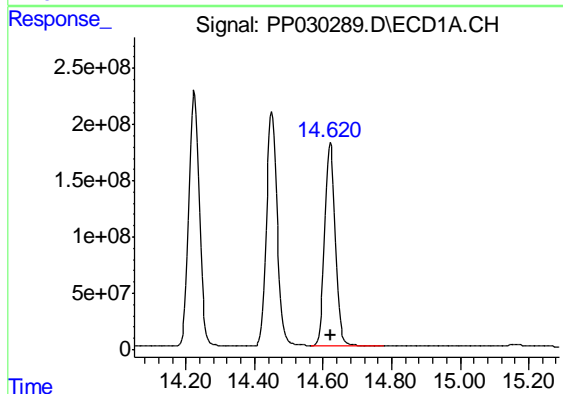
R.T.: 14.224 min
 Delta R.T.: 0.000 min
 Response: 4915176597
 Conc: 727.59 ng/ml

Instrument :
 ECD_P
 ClientSampled :
 ICVPP071819



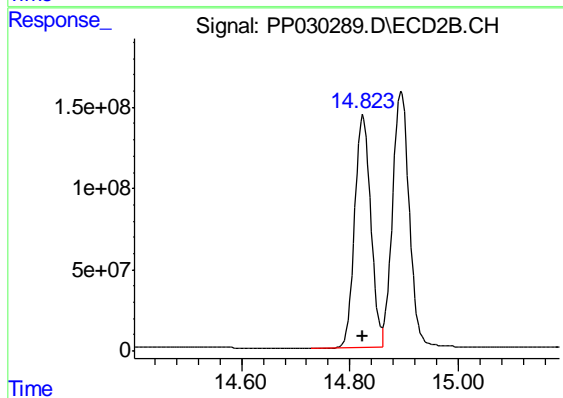
#11 2,4,5-TP (SILVEX)

R.T.: 14.283 min
 Delta R.T.: 0.000 min
 Response: 3701125861
 Conc: 726.49 ng/ml



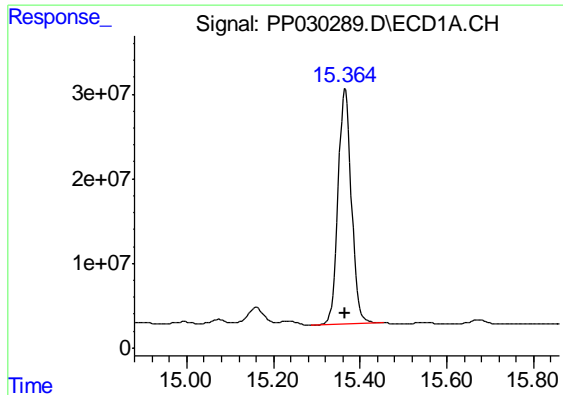
#12 2,4,5-T

R.T.: 14.621 min
 Delta R.T.: 0.000 min
 Response: 3928853959
 Conc: 754.08 ng/ml



#12 2,4,5-T

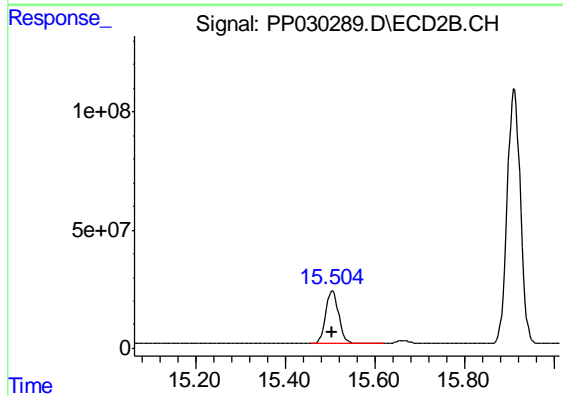
R.T.: 14.825 min
 Delta R.T.: 0.000 min
 Response: 2936328965
 Conc: 753.44 ng/ml



#13 2,4-DB

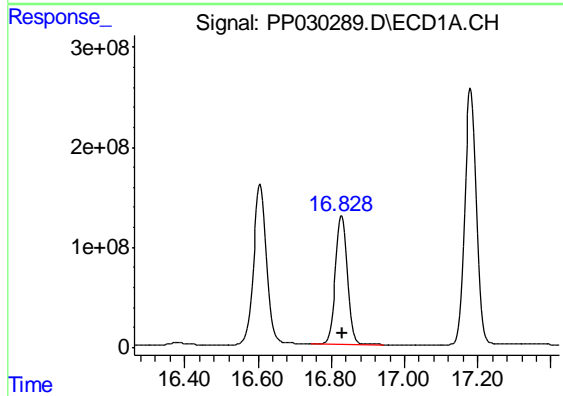
R.T.: 15.365 min
 Delta R.T.: -0.001 min
 Response: 598929264
 Conc: 719.39 ng/ml

Instrument :
 ECD_P
 ClientSampleId :
 ICVPP071819



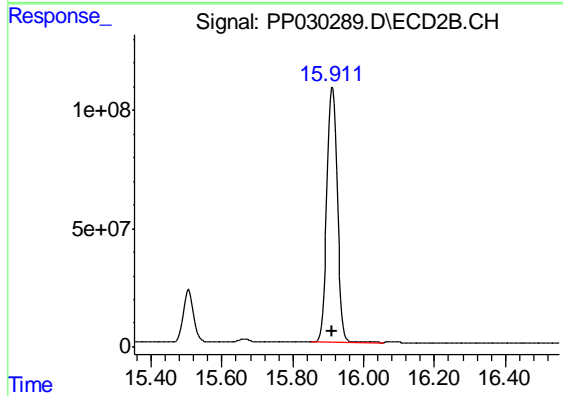
#13 2,4-DB

R.T.: 15.506 min
 Delta R.T.: 0.000 min
 Response: 460031425
 Conc: 729.53 ng/ml



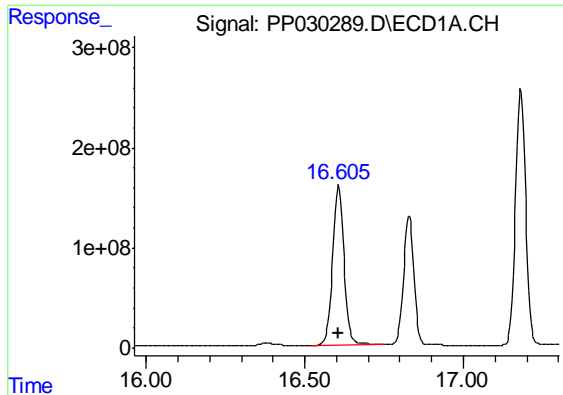
#14 DINOSEB

R.T.: 16.829 min
 Delta R.T.: 0.000 min
 Response: 2901306031
 Conc: 750.04 ng/ml



#14 DINOSEB

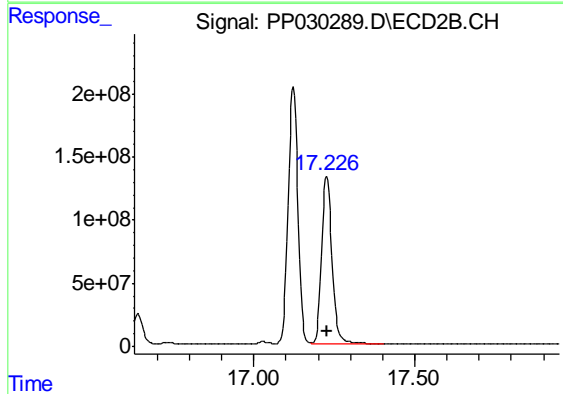
R.T.: 15.912 min
 Delta R.T.: 0.000 min
 Response: 2215023927
 Conc: 749.94 ng/ml



#15 Picloram

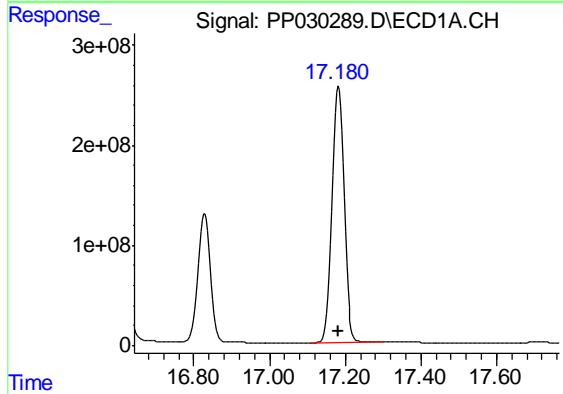
R.T.: 16.607 min
 Delta R.T.: -0.001 min
 Response: 3965702196
 Conc: 733.02 ng/ml

Instrument :
 ECD_P
 ClientSampleId :
 ICVPP071819



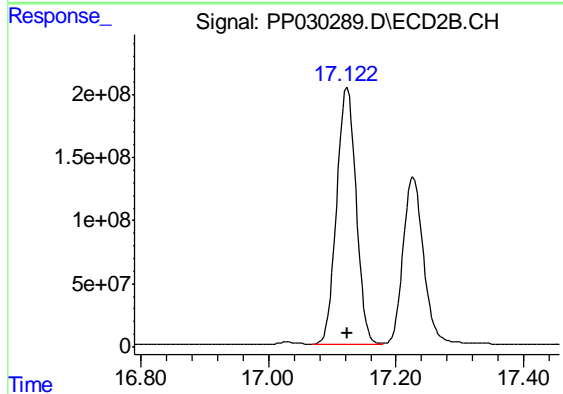
#15 Picloram

R.T.: 17.227 min
 Delta R.T.: 0.000 min
 Response: 3024449275
 Conc: 743.37 ng/ml



#16 DCPA

R.T.: 17.181 min
 Delta R.T.: -0.001 min
 Response: 5762166076
 Conc: 746.84 ng/ml



#16 DCPA

R.T.: 17.124 min
 Delta R.T.: 0.000 min
 Response: 4324078415
 Conc: 737.15 ng/ml