

Data Path : Z:\pestpcbsrv\HPCHEM1\ECD\_P\Data\PP071923\  
 Data File : PP058781.D  
 Signal(s) : Signal #1: ECD1A.ch Signal #2: ECD2B.ch  
 Acq On : 20 Jul 2023 03:22  
 Operator : YP\AJ  
 Sample : AR1254ICV500  
 Misc :  
 ALS Vial : 37 Sample Multiplier: 1

**Instrument :**  
 ECD\_P  
**ClientSampleId :**  
 ICVPP071923AR1254

Integration File signal 1: autoint1.e  
 Integration File signal 2: autoint2.e  
 Quant Time: Jul 20 04:06:41 2023  
 Quant Method : Z:\pestpcbsrv\HPCHEM1\ECD\_P\methods\PP071923.M  
 Quant Title : GC EXTRACTABLES  
 QLast Update : Thu Jul 20 03:59:18 2023  
 Response via : Initial Calibration  
 Integrator: ChemStation

Volume Inj. : 2 µl  
 Signal #1 Phase : ZB-MR1 Signal #2 Phase: ZB-MR2  
 Signal #1 Info : 30Mx0.32mmx 0.50µ Signal #2 Info : 30M x 0.32mm x 0.25µm

Compound	RT#1	RT#2	Resp#1	Resp#2	ng/ml	ng/ml
-----						
System Monitoring Compounds						
1) SA Tetrachlo...	4.425	3.666	74609481	113.1E6	51.062	52.932
2) SA Decachlor...	10.221	8.715	49686909	89878383	55.635	49.476
Target Compounds						
26) L6 AR-1254-1	6.460	5.570	25959842	55523309	533.406	507.554
27) L6 AR-1254-2	6.680	5.719	38057641	48459737	532.312	507.344
28) L6 AR-1254-3	7.046	6.125	39368769	77203526	533.866	512.726
29) L6 AR-1254-4	7.333	6.354	26094554	42683637	533.111	516.908
30) L6 AR-1254-5	7.754	6.775	28010780	66231424	517.379	517.069
-----						

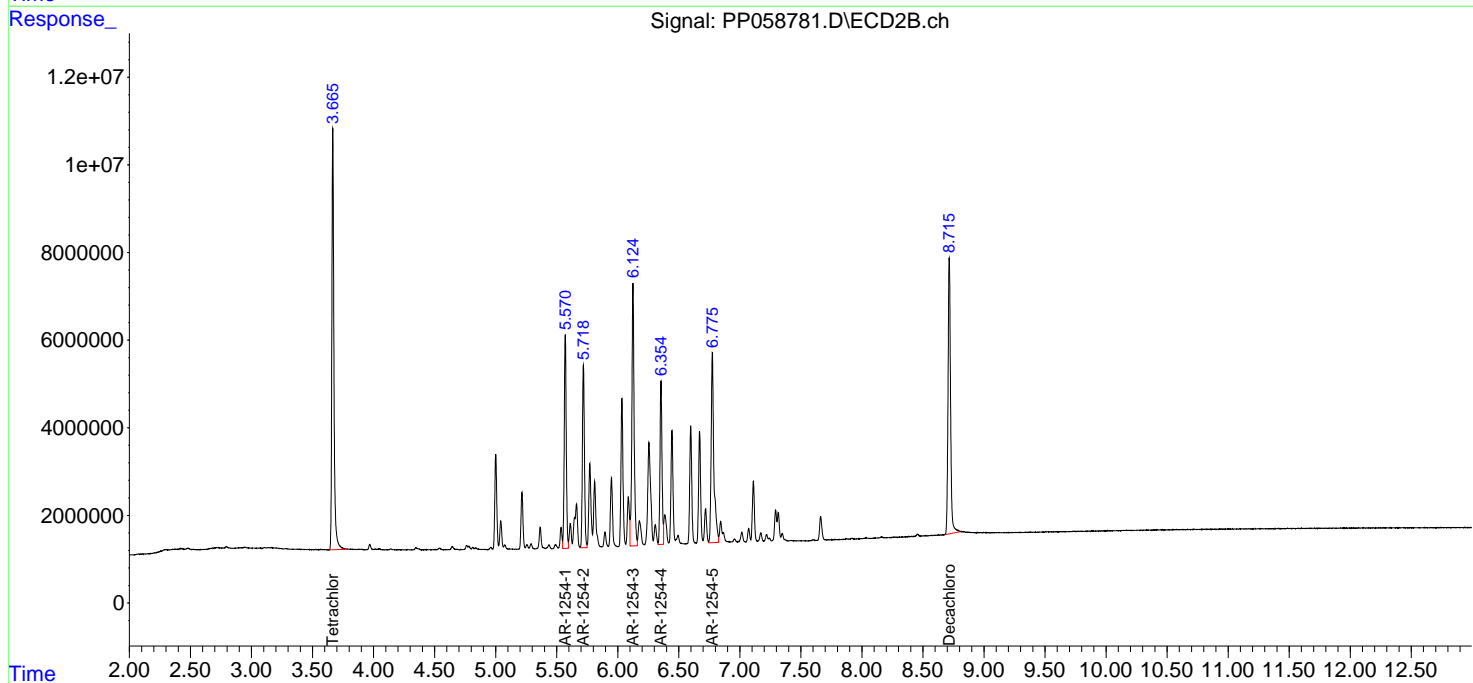
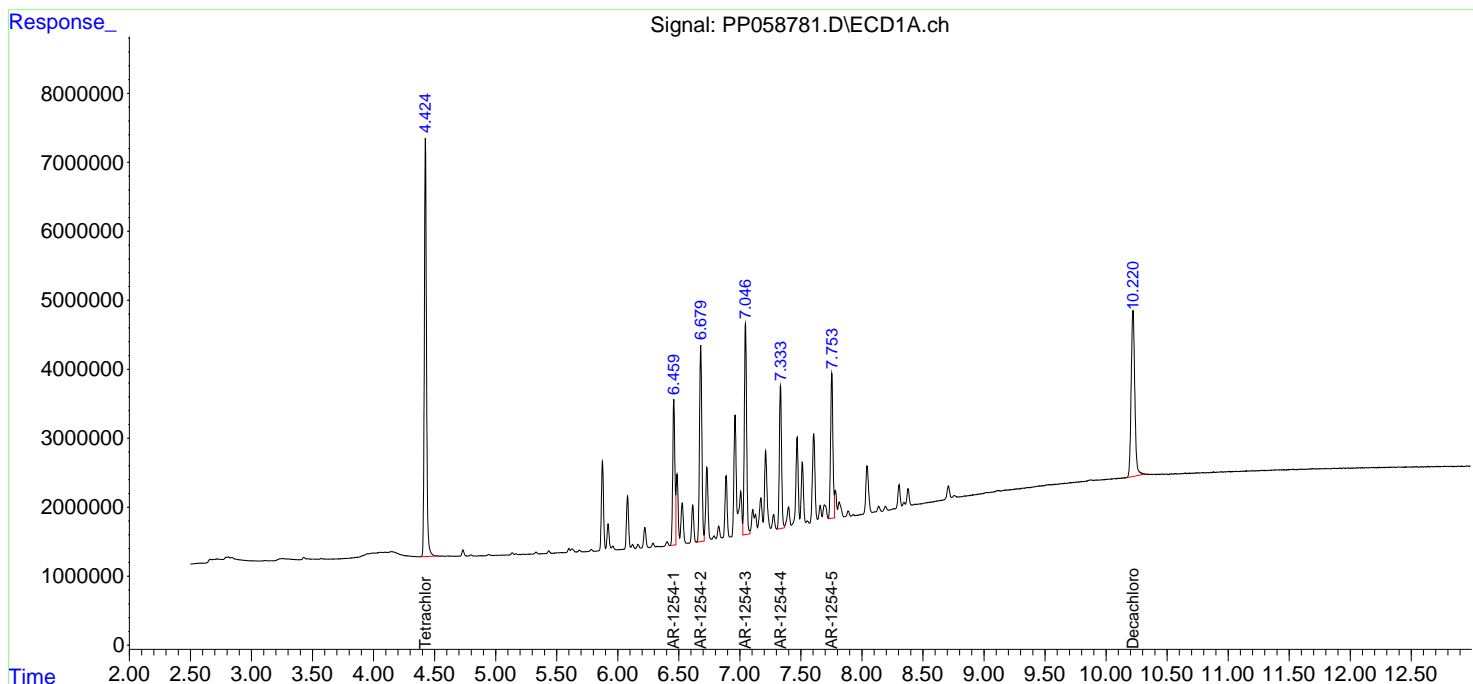
(f)=RT Delta > 1/2 Window (#)=Amounts differ by > 25% (m)=manual int.

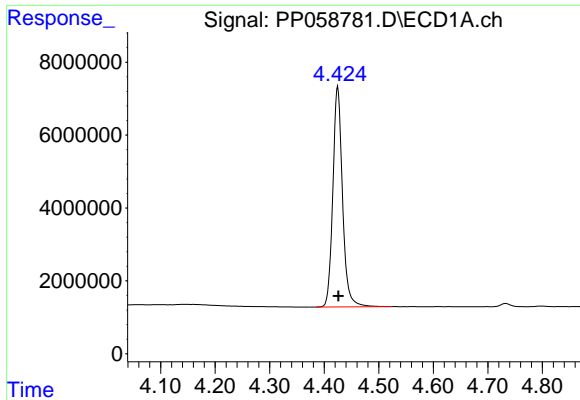
Data Path : Z:\pestpcbsrv\HPCHEM1\ECD\_P\Data\PP071923\  
 Data File : PP058781.D  
 Signal(s) : Signal #1: ECD1A.ch Signal #2: ECD2B.ch  
 Acq On : 20 Jul 2023 03:22  
 Operator : YP\AJ  
 Sample : AR1254ICV500  
 Misc :  
 ALS Vial : 37 Sample Multiplier: 1

Instrument :  
 ECD\_P  
 ClientSampleId :  
 ICVPP071923AR1254

Integration File signal 1: autoint1.e  
 Integration File signal 2: autoint2.e  
 Quant Time: Jul 20 04:06:41 2023  
 Quant Method : Z:\pestpcbsrv\HPCHEM1\ECD\_P\methods\PP071923.M  
 Quant Title : GC EXTRACTABLES  
 QLast Update : Thu Jul 20 03:59:18 2023  
 Response via : Initial Calibration  
 Integrator: ChemStation

Volume Inj. : 2 µl  
 Signal #1 Phase : ZB-MR1 Signal #2 Phase: ZB-MR2  
 Signal #1 Info : 30Mx0.32mmx 0.50µ Signal #2 Info : 30M x 0.32mm x 0.25µm

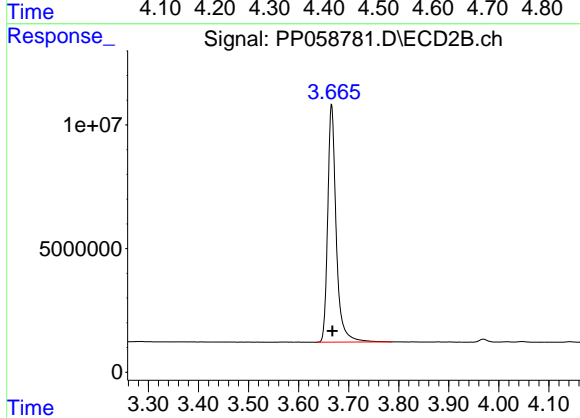




#1 Tetrachloro-m-xylene

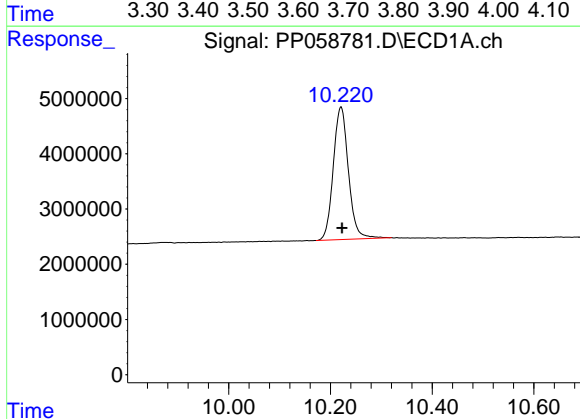
R.T.: 4.425 min  
 Delta R.T.: -0.001 min  
 Response: 74609481  
 Conc: 51.06 ng/ml

Instrument :  
 ECD\_P  
 ClientSampleId :  
 ICVPP071923AR1254



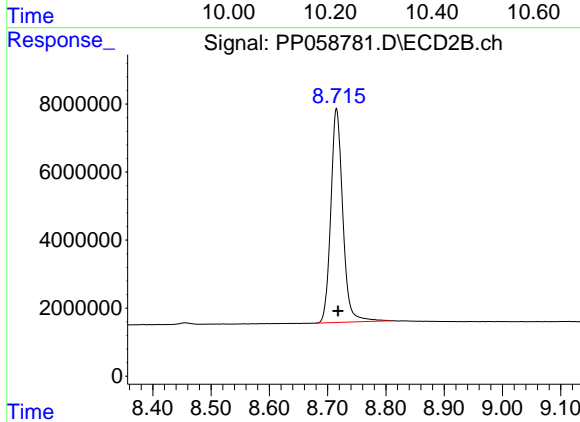
#1 Tetrachloro-m-xylene

R.T.: 3.666 min  
 Delta R.T.: -0.001 min  
 Response: 113114027  
 Conc: 52.93 ng/ml



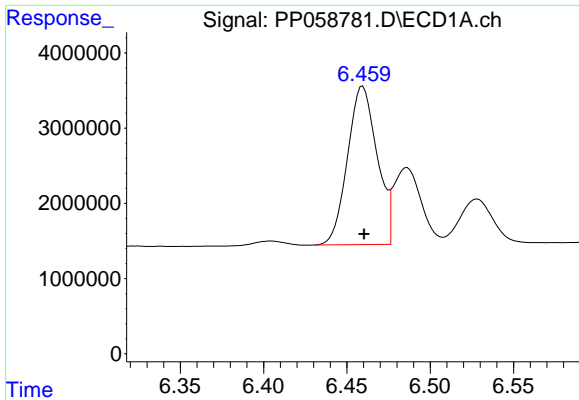
#2 Decachlorobiphenyl

R.T.: 10.221 min  
 Delta R.T.: -0.002 min  
 Response: 49686909  
 Conc: 55.63 ng/ml



#2 Decachlorobiphenyl

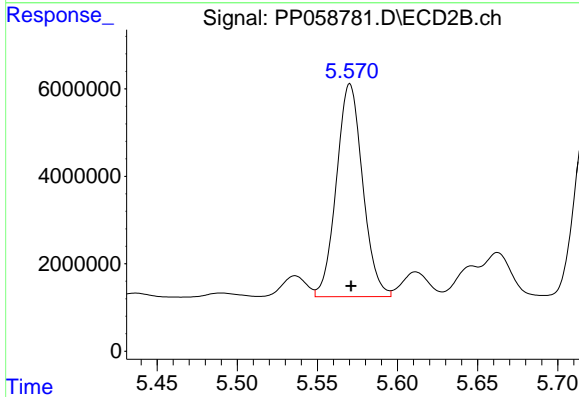
R.T.: 8.715 min  
 Delta R.T.: -0.003 min  
 Response: 89878383  
 Conc: 49.48 ng/ml



#26 AR-1254-1

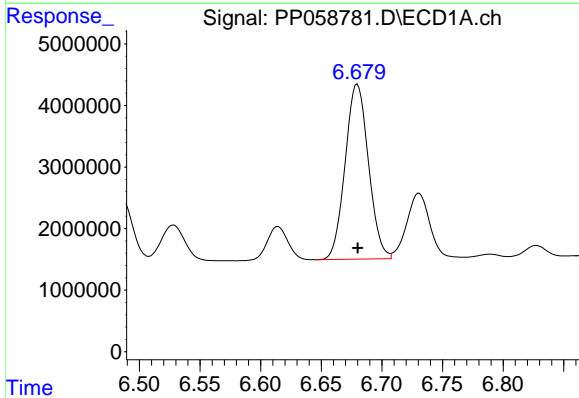
R.T.: 6.460 min  
 Delta R.T.: 0.000 min  
 Response: 25959842  
 Conc: 533.41 ng/ml

Instrument :  
 ECD\_P  
 ClientSampleId :  
 ICVPP071923AR1254



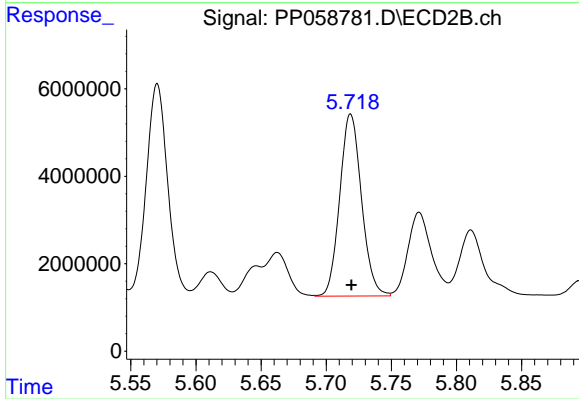
#26 AR-1254-1

R.T.: 5.570 min  
 Delta R.T.: 0.000 min  
 Response: 55523309  
 Conc: 507.55 ng/ml



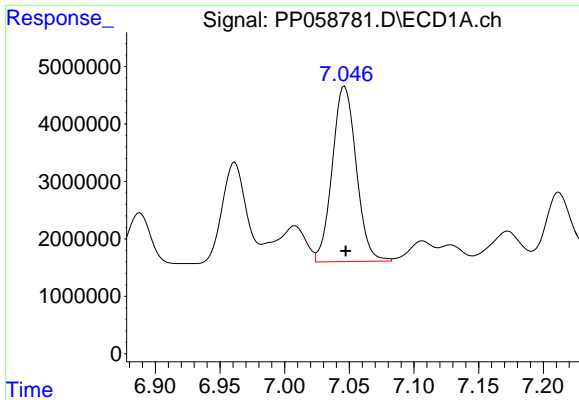
#27 AR-1254-2

R.T.: 6.680 min  
 Delta R.T.: 0.000 min  
 Response: 38057641  
 Conc: 532.31 ng/ml



#27 AR-1254-2

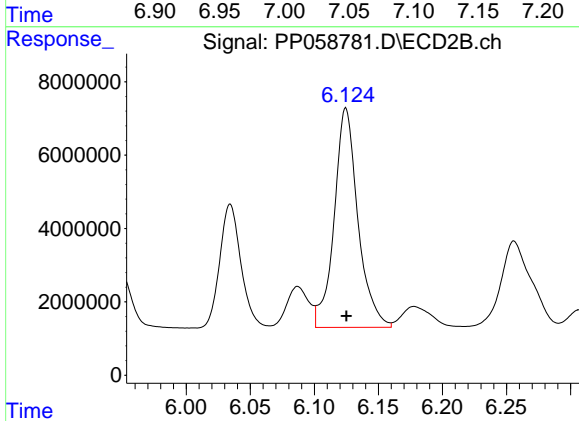
R.T.: 5.719 min  
 Delta R.T.: 0.000 min  
 Response: 48459737  
 Conc: 507.34 ng/ml



#28 AR-1254-3

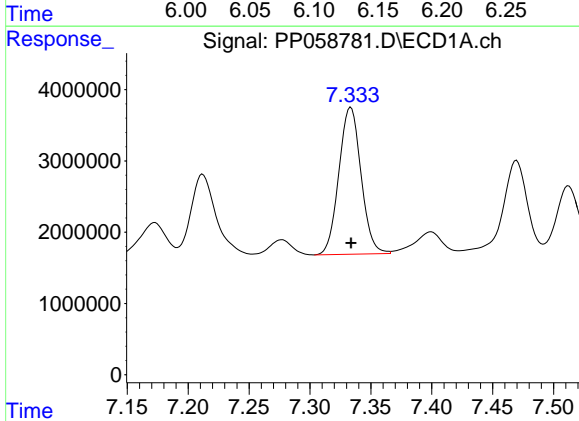
R.T.: 7.046 min  
 Delta R.T.: 0.000 min  
 Response: 39368769  
 Conc: 533.87 ng/ml

Instrument :  
 ECD\_P  
 ClientSampleId :  
 ICVPP071923AR1254



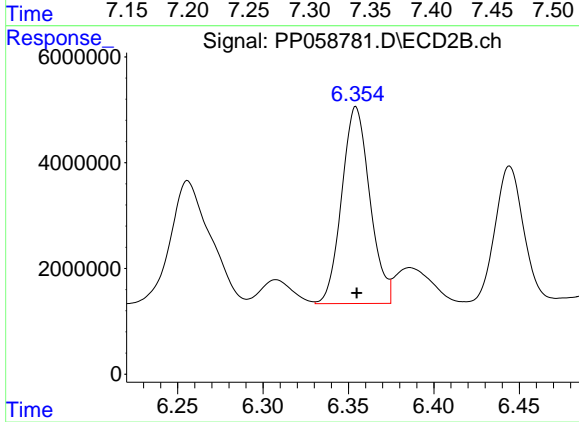
#28 AR-1254-3

R.T.: 6.125 min  
 Delta R.T.: 0.000 min  
 Response: 77203526  
 Conc: 512.73 ng/ml



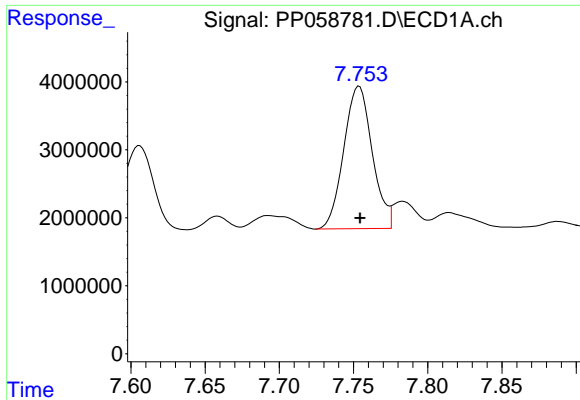
#29 AR-1254-4

R.T.: 7.333 min  
 Delta R.T.: 0.000 min  
 Response: 26094554  
 Conc: 533.11 ng/ml



#29 AR-1254-4

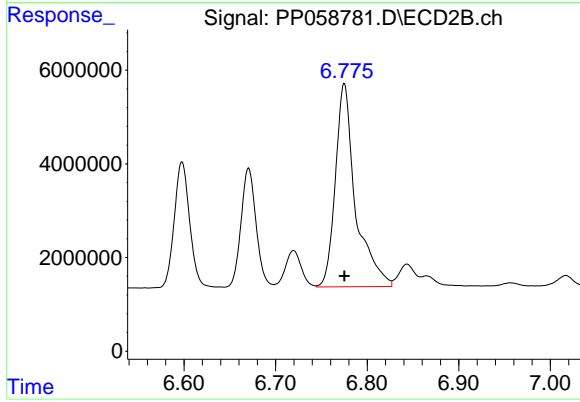
R.T.: 6.354 min  
 Delta R.T.: 0.000 min  
 Response: 42683637  
 Conc: 516.91 ng/ml



#30 AR-1254-5

R.T.: 7.754 min  
Delta R.T.: 0.000 min  
Response: 28010780  
Conc: 517.38 ng/ml

Instrument :  
ECD\_P  
ClientSampleId :  
ICVPP071923AR1254



#30 AR-1254-5

R.T.: 6.775 min  
Delta R.T.: 0.000 min  
Response: 66231424  
Conc: 517.07 ng/ml