

Data Path : Z:\pestpcbsrv\HPCHEM1\ECD_P\Data\PP071924\
 Data File : PP066448.D
 Signal(s) : Signal #1: ECD1A.ch Signal #2: ECD2B.ch
 Acq On : 20 Jul 2024 03:18
 Operator : YP\AJ
 Sample : AR1660CCC500
 Misc :
 ALS Vial : 3 Sample Multiplier: 1

Instrument :
 ECD_P
 ClientSampleId :
 AR1660CCC500

Integration File signal 1: autoint1.e
 Integration File signal 2: autoint2.e
 Quant Time: Jul 20 03:27:59 2024
 Quant Method : Z:\pestpcbsrv\HPCHEM1\ECD_P\methods\PP071624.M
 Quant Title : GC EXTRACTABLES
 QLast Update : Wed Jul 17 07:20:03 2024
 Response via : Initial Calibration
 Integrator: ChemStation

Volume Inj. : 2 µl
 Signal #1 Phase : ZB-MR1 Signal #2 Phase: ZB-MR2
 Signal #1 Info : 30Mx0.32mmx 0.50µ Signal #2 Info : 30M x 0.32mm x 0.25µm

Compound	RT#1	RT#2	Resp#1	Resp#2	ng/ml	ng/ml

System Monitoring Compounds						
1) SA Tetrachlo...	4.790	4.026	105.8E6	107.8E6	60.035	56.449
2) SA Decachlor...	10.790	9.203	93112091	67106186	53.048	52.592
Target Compounds						
3) L1 AR-1016-1	5.970	5.139	38178253	30668202	520.903	489.553
4) L1 AR-1016-2	5.993	5.159	56622333	43763658	517.772	491.705
5) L1 AR-1016-3	6.057	5.341	35651979	22395493	528.165	474.388
6) L1 AR-1016-4	6.156	5.379	28867167	18843391	520.085	493.797
7) L1 AR-1016-5	6.452	5.600	27887065	23105277	501.571	476.721
31) L7 AR-1260-1	7.582	6.646	46043456	37805141	435.251	442.216
32) L7 AR-1260-2	7.837	6.833	50920319	43349247	441.985	445.780
33) L7 AR-1260-3	8.202	6.993	37333238	41175752	470.377	448.791
34) L7 AR-1260-4	8.445	7.467	40871965	31858223	469.323	490.212
35) L7 AR-1260-5	8.791	7.707	76854222	73141367	497.088	520.317

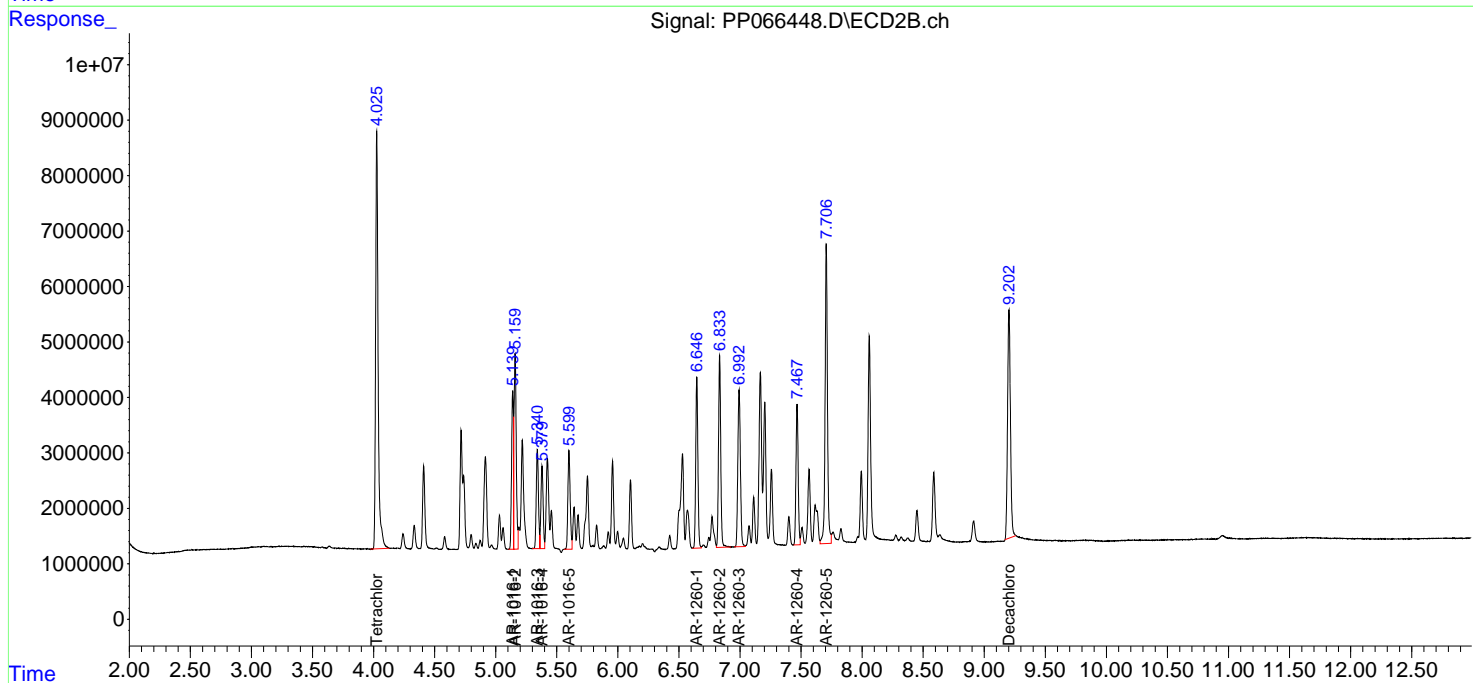
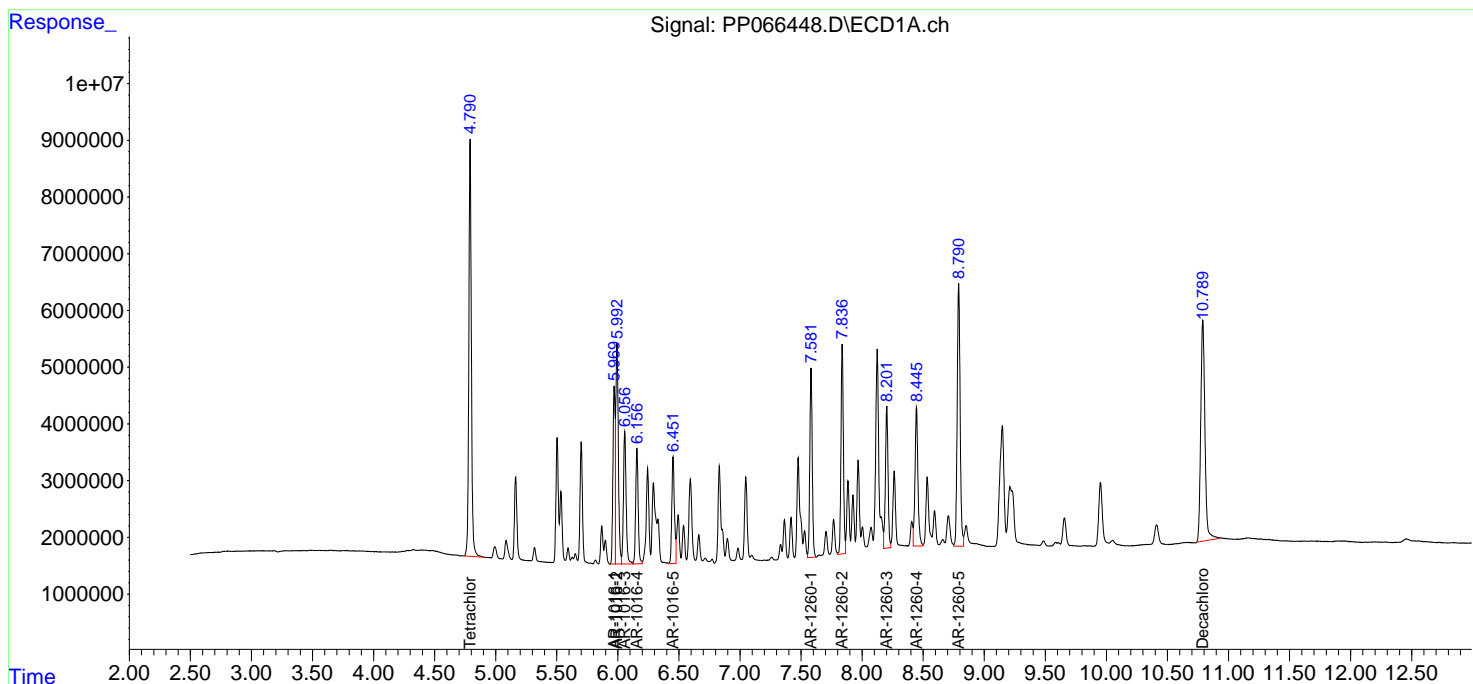
(f)=RT Delta > 1/2 Window (#)=Amounts differ by > 25% (m)=manual int.

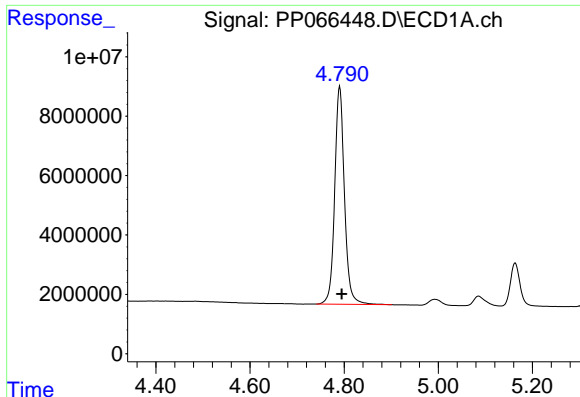
Data Path : Z:\pestpcbsrv\HPCHEM1\ECD_P\Data\PP071924\
 Data File : PP066448.D
 Signal(s) : Signal #1: ECD1A.ch Signal #2: ECD2B.ch
 Acq On : 20 Jul 2024 03:18
 Operator : YP\AJ
 Sample : AR1660CCC500
 Misc :
 ALS Vial : 3 Sample Multiplier: 1

Instrument :
 ECD_P
 ClientSampleId :
 AR1660CCC500

Integration File signal 1: autoint1.e
 Integration File signal 2: autoint2.e
 Quant Time: Jul 20 03:27:59 2024
 Quant Method : Z:\pestpcbsrv\HPCHEM1\ECD_P\methods\PP071624.M
 Quant Title : GC EXTRACTABLES
 QLast Update : Wed Jul 17 07:20:03 2024
 Response via : Initial Calibration
 Integrator: ChemStation

Volume Inj. : 2 µl
 Signal #1 Phase : ZB-MR1 Signal #2 Phase: ZB-MR2
 Signal #1 Info : 30Mx0.32mmx 0.50µ Signal #2 Info : 30M x 0.32mm x 0.25µm

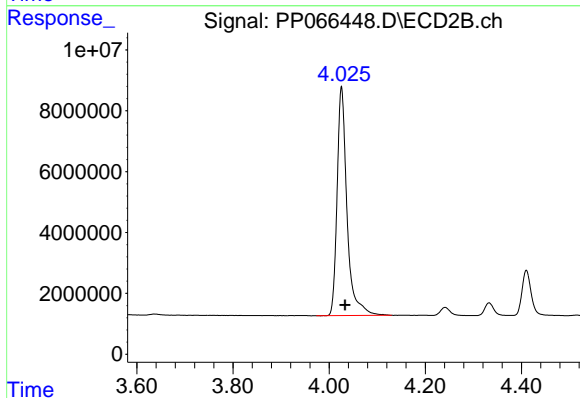




#1 Tetrachloro-m-xylene

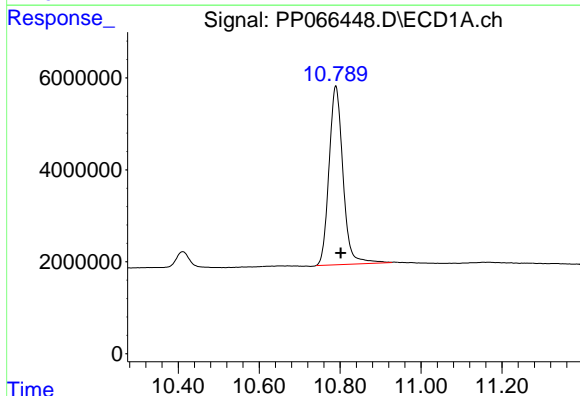
R.T.: 4.790 min
 Delta R.T.: -0.005 min
 Response: 105769351
 Conc: 60.04 ng/ml

Instrument :
 ECD_P
 ClientSampleId :
 AR1660CCC500



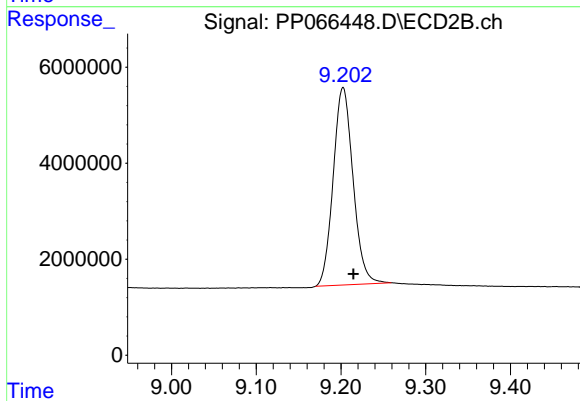
#1 Tetrachloro-m-xylene

R.T.: 4.026 min
 Delta R.T.: -0.007 min
 Response: 107792434
 Conc: 56.45 ng/ml



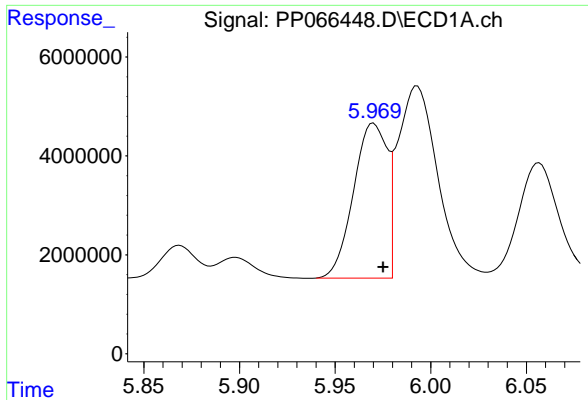
#2 Decachlorobiphenyl

R.T.: 10.790 min
 Delta R.T.: -0.012 min
 Response: 93112091
 Conc: 53.05 ng/ml



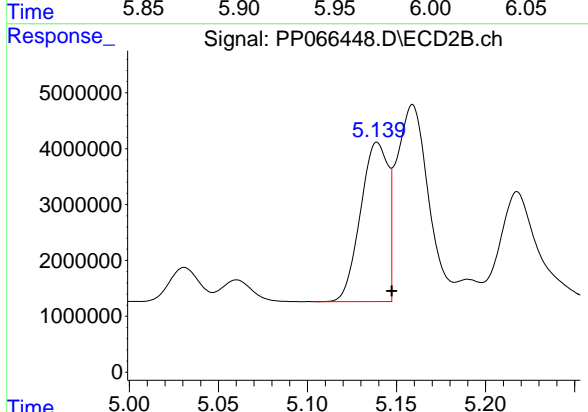
#2 Decachlorobiphenyl

R.T.: 9.203 min
 Delta R.T.: -0.012 min
 Response: 67106186
 Conc: 52.59 ng/ml

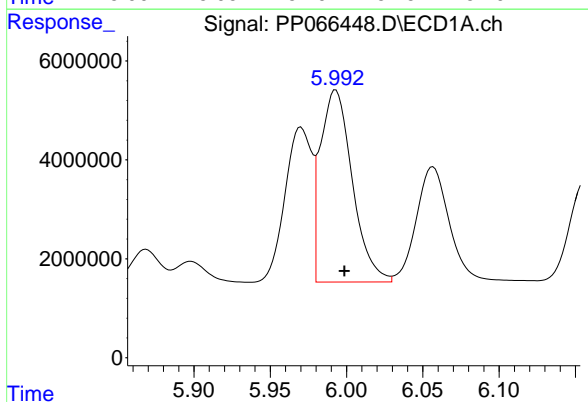


#3 AR-1016-1
 R.T.: 5.970 min
 Delta R.T.: -0.005 min
 Response: 38178253
 Conc: 520.90 ng/ml

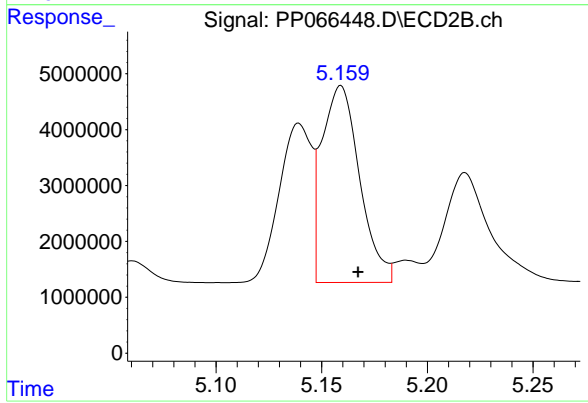
Instrument :
 ECD_P
 ClientSampleId :
 AR1660CCC500



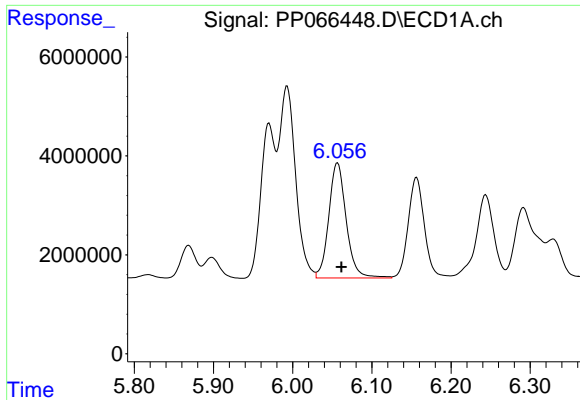
#3 AR-1016-1
 R.T.: 5.139 min
 Delta R.T.: -0.008 min
 Response: 30668202
 Conc: 489.55 ng/ml



#4 AR-1016-2
 R.T.: 5.993 min
 Delta R.T.: -0.006 min
 Response: 56622333
 Conc: 517.77 ng/ml



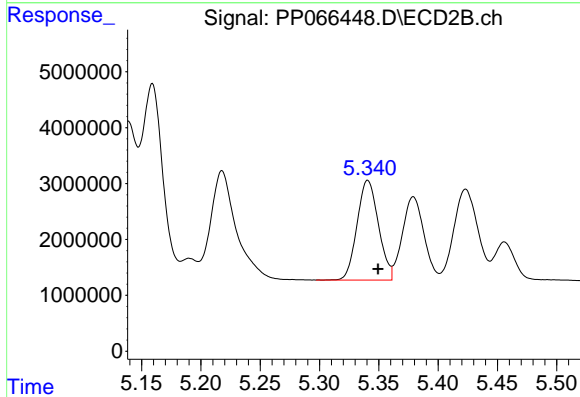
#4 AR-1016-2
 R.T.: 5.159 min
 Delta R.T.: -0.008 min
 Response: 43763658
 Conc: 491.70 ng/ml



#5 AR-1016-3

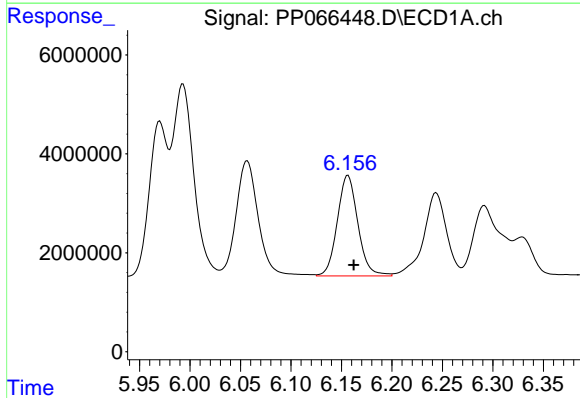
R.T.: 6.057 min
 Delta R.T.: -0.005 min
 Response: 35651979
 Conc: 528.17 ng/ml

Instrument :
 ECD_P
 ClientSampleId :
 AR1660CCC500



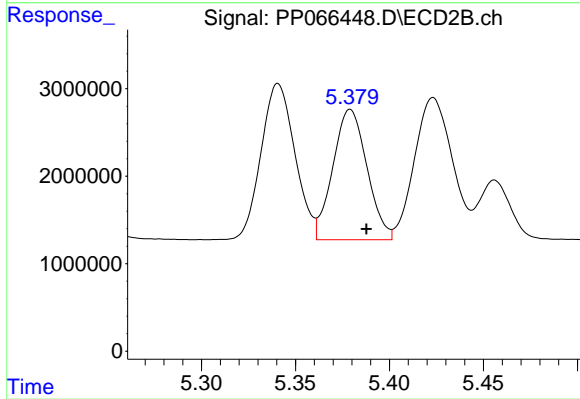
#5 AR-1016-3

R.T.: 5.341 min
 Delta R.T.: -0.009 min
 Response: 22395493
 Conc: 474.39 ng/ml



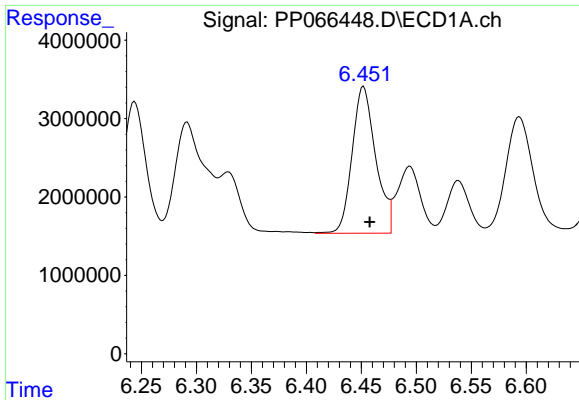
#6 AR-1016-4

R.T.: 6.156 min
 Delta R.T.: -0.006 min
 Response: 28867167
 Conc: 520.09 ng/ml



#6 AR-1016-4

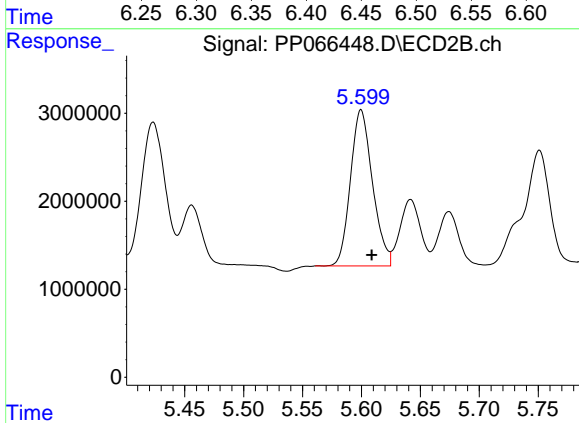
R.T.: 5.379 min
 Delta R.T.: -0.009 min
 Response: 18843391
 Conc: 493.80 ng/ml



#7 AR-1016-5

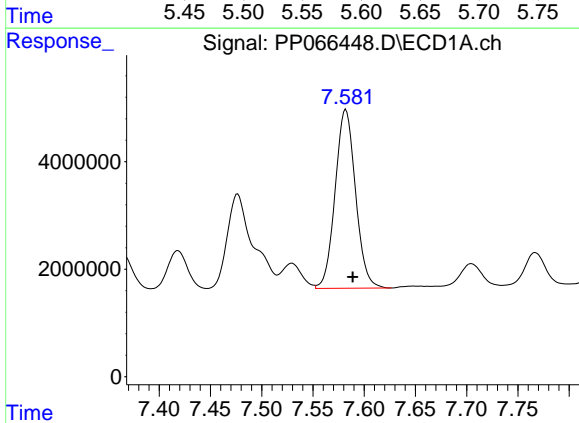
R.T.: 6.452 min
 Delta R.T.: -0.006 min
 Response: 27887065
 Conc: 501.57 ng/ml

Instrument :
 ECD_P
 ClientSampleId :
 AR1660CCC500



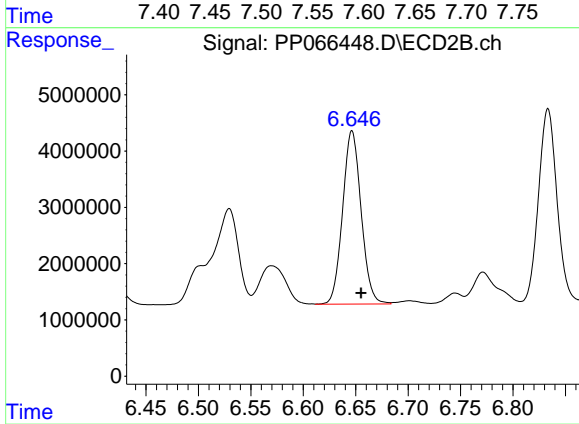
#7 AR-1016-5

R.T.: 5.600 min
 Delta R.T.: -0.009 min
 Response: 23105277
 Conc: 476.72 ng/ml



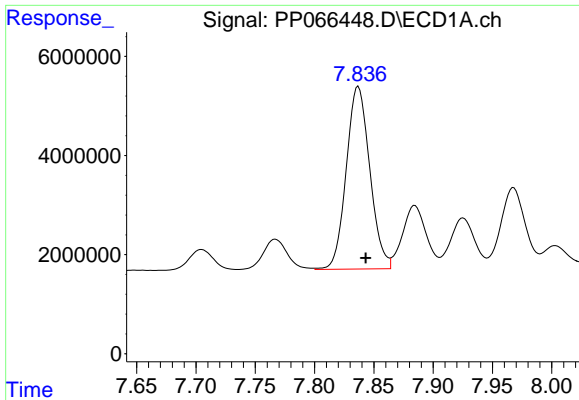
#31 AR-1260-1

R.T.: 7.582 min
 Delta R.T.: -0.007 min
 Response: 46043456
 Conc: 435.25 ng/ml



#31 AR-1260-1

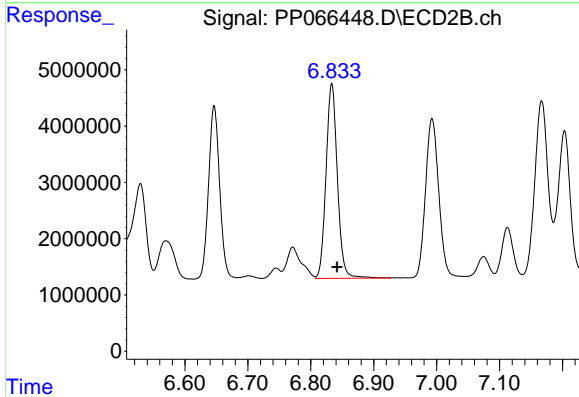
R.T.: 6.646 min
 Delta R.T.: -0.009 min
 Response: 37805141
 Conc: 442.22 ng/ml



#32 AR-1260-2

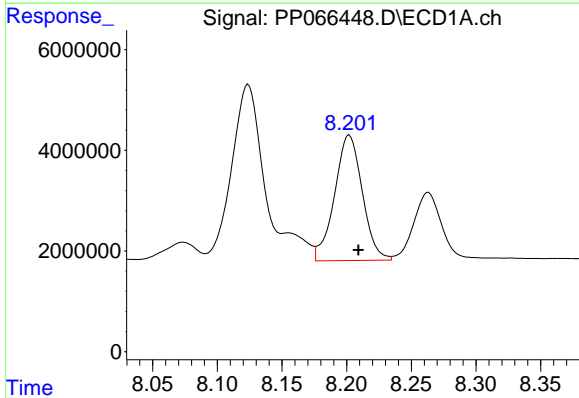
R.T.: 7.837 min
 Delta R.T.: -0.006 min
 Response: 50920319
 Conc: 441.98 ng/ml

Instrument :
 ECD_P
 ClientSampleId :
 AR1660CCC500



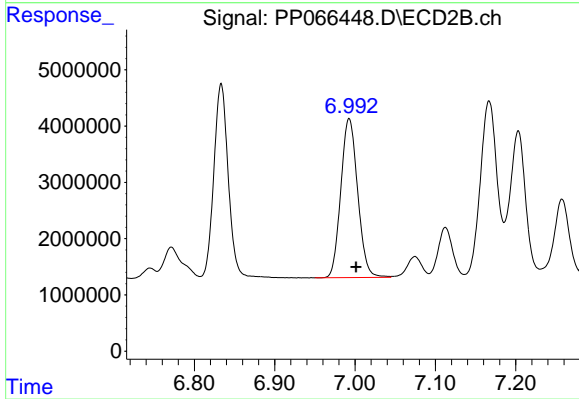
#32 AR-1260-2

R.T.: 6.833 min
 Delta R.T.: -0.009 min
 Response: 43349247
 Conc: 445.78 ng/ml



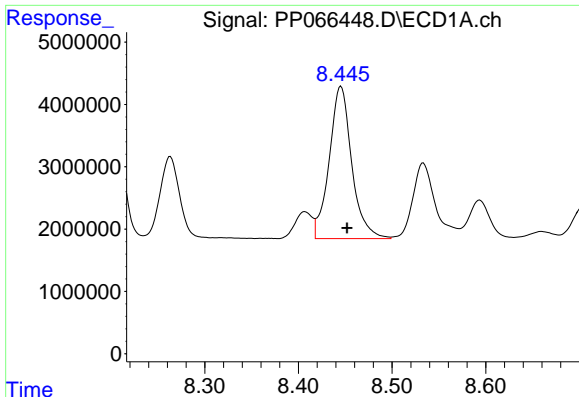
#33 AR-1260-3

R.T.: 8.202 min
 Delta R.T.: -0.007 min
 Response: 37333238
 Conc: 470.38 ng/ml



#33 AR-1260-3

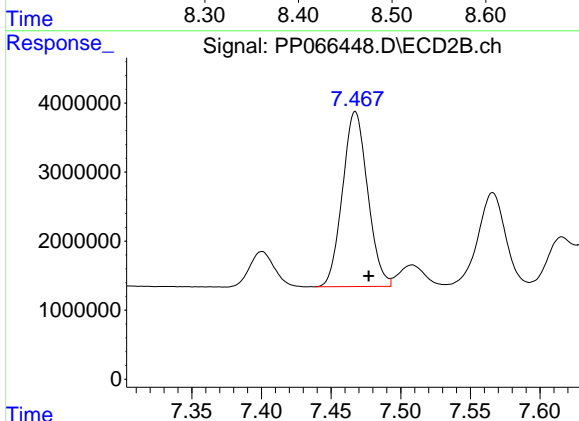
R.T.: 6.993 min
 Delta R.T.: -0.009 min
 Response: 41175752
 Conc: 448.79 ng/ml



#34 AR-1260-4

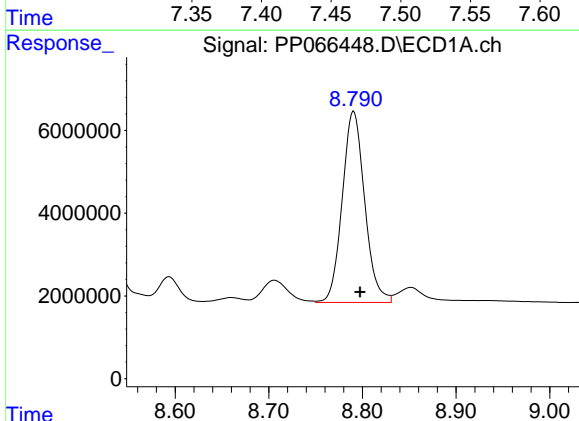
R.T.: 8.445 min
 Delta R.T.: -0.007 min
 Response: 40871965
 Conc: 469.32 ng/ml

Instrument :
 ECD_P
 ClientSampleId :
 AR1660CCC500



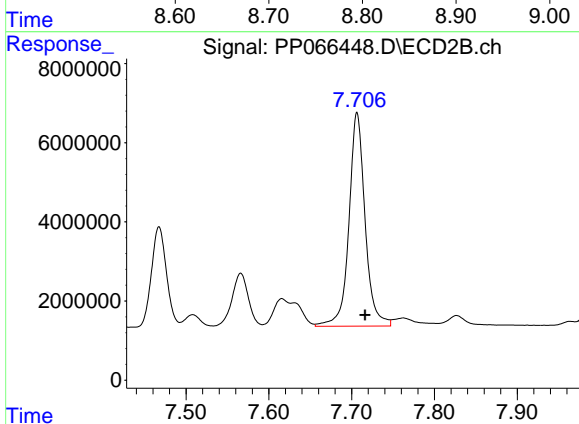
#34 AR-1260-4

R.T.: 7.467 min
 Delta R.T.: -0.010 min
 Response: 31858223
 Conc: 490.21 ng/ml



#35 AR-1260-5

R.T.: 8.791 min
 Delta R.T.: -0.007 min
 Response: 76854222
 Conc: 497.09 ng/ml



#35 AR-1260-5

R.T.: 7.707 min
 Delta R.T.: -0.010 min
 Response: 73141367
 Conc: 520.32 ng/ml