

Data Path : Z:\pestpcbsrv\HPCHEM1\ECD_P\Data\PP072018\
 Data File : PP026808.D
 Signal(s) : Signal #1: ECD1A.CH Signal #2: ECD2B.CH
 Acq On : 20 Jul 2018 11:12
 Operator : EI\MA
 Sample : HSTDCCC750
 Misc :
 ALS Vial : 3 Sample Multiplier: 1

Instrument :
 ECD_P
 ClientSampleId :
 HSTDCCC750

Integration File signal 1: autoint1.e
 Integration File signal 2: autoint2.e
 Quant Time: Jul 20 14:14:41 2018
 Quant Method : Z:\pestpcbsrv\HPCHEM1\ECD_P\methods\PP071318.M
 Quant Title : 8080.M
 QLast Update : Fri Jul 13 23:16:25 2018
 Response via : Initial Calibration
 Integrator: ChemStation 6890 Scale Mode: Large solvent peaks clipped

Volume Inj. : 2 µl
 Signal #1 Phase : ZB-CLPesticides-1 Signal #2 Phase: ZB-CLPesticides-2
 Signal #1 Info : 30M x 0.32mm x0.5 Signal #2 Info : 30M x 0.32mm x 0.25µm

Compound	RT#1	RT#2	Resp#1	Resp#2	ng/ml	ng/ml

System Monitoring Compounds						
4) S 2,4-DCAA	12.048	12.154	165.3E6	298.4E6	740.913	746.813
Target Compounds						
1) T Dalapon	3.313	2.975	348.1E6	364.6E6	676.045	652.139
2) T 3,5-DICHL...	10.461	10.244	294.4E6	368.4E6	655.084	690.427
3) T 4-Nitroph...	11.621	11.293	296.2E6	154.5E6	629.147	647.871
5) T DICAMBA	12.370	12.465	920.9E6	1119.2E6	744.726	702.323
6) T MCPPE	12.712	12.659	14275041	61420763	36.199	66.627 #
7) T MCPA	12.956	13.048	37595215	96550563	63.036	67.219
8) T DICHLORPROP	13.566	13.580	191.7E6	266.2E6	637.208	688.814
9) T 2,4-D	13.914	14.064	249.7E6	358.8E6	694.046	684.457
10) T Pentachlo...	14.333	14.678	4928.4E6	4670.1E6	728.668	707.443
11) T 2,4,5-TP ...	15.196	15.248	1838.8E6	1819.1E6	728.407	703.776
12) T 2,4,5-T	15.582	15.886	1644.4E6	1442.6E6	720.415	655.701
13) T 2,4-DB	16.344	16.489	141.0E6	199.6E6	718.240	690.646
14) T DINOSEB	17.836	16.884	1277.6E6	1250.3E6	695.246	700.747
15) T Picloram	17.591	18.256	2298.7E6	2012.2E6	602.972	553.952
16) T DCPA	18.200	18.144	2622.3E6	2275.9E6	716.971	708.909

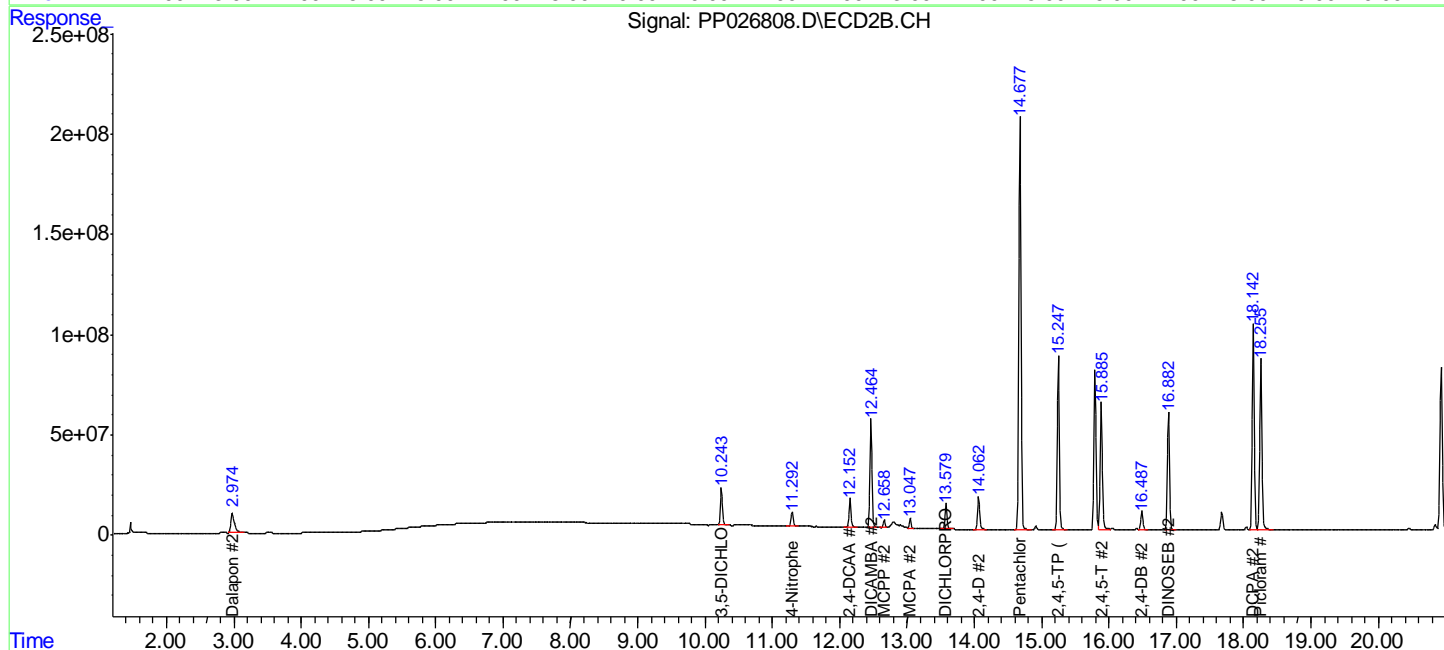
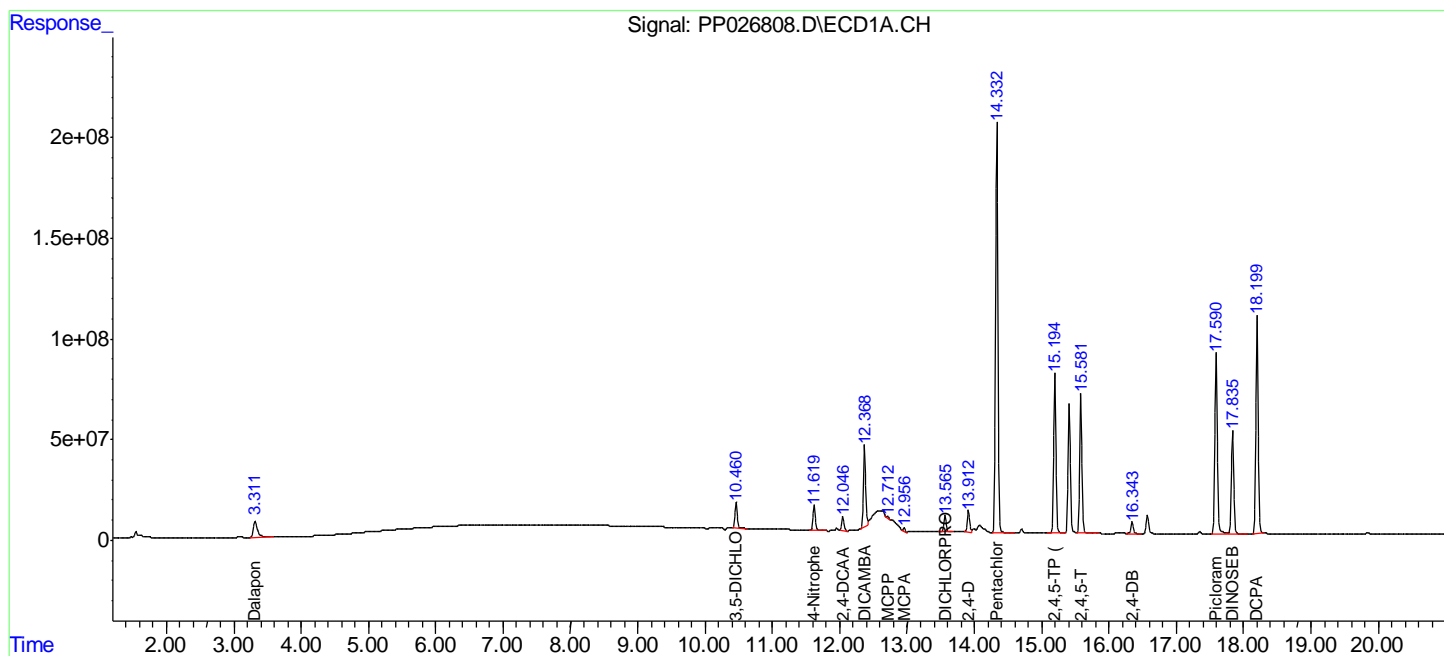
(f)=RT Delta > 1/2 Window (#)=Amounts differ by > 25% (m)=manual int.

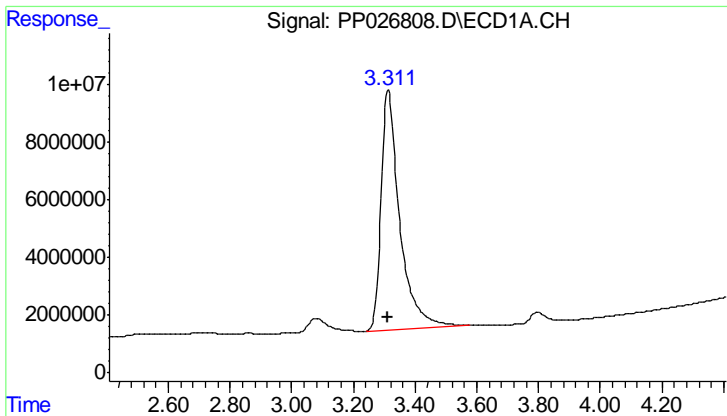
Data Path : Z:\pestpcbsrv\HPCHEM1\ECD_P\Data\PP072018\
 Data File : PP026808.D
 Signal(s) : Signal #1: ECD1A.CH Signal #2: ECD2B.CH
 Acq On : 20 Jul 2018 11:12
 Operator : EI\MA
 Sample : HSTDCCC750
 Misc :
 ALS Vial : 3 Sample Multiplier: 1

Instrument :
 ECD_P
 ClientSampleId :
 HSTDCCC750

Integration File signal 1: autoint1.e
 Integration File signal 2: autoint2.e
 Quant Time: Jul 20 14:14:41 2018
 Quant Method : Z:\pestpcbsrv\HPCHEM1\ECD_P\methods\PP071318.M
 Quant Title : 8080.M
 QLast Update : Fri Jul 13 23:16:25 2018
 Response via : Initial Calibration
 Integrator: ChemStation 6890 Scale Mode: Large solvent peaks clipped

Volume Inj. : 2 µl
 Signal #1 Phase : ZB-CLPesticides-1 Signal #2 Phase: ZB-CLPesticides-2
 Signal #1 Info : 30M x 0.32mm x0.5 Signal #2 Info : 30M x 0.32mm x 0.25µm

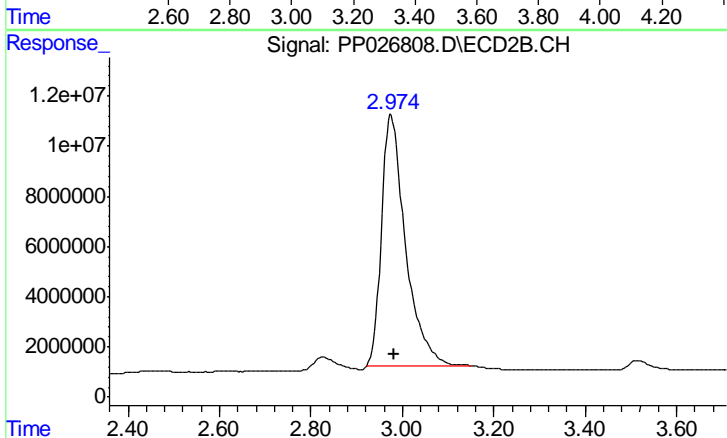




#1 Dalapon

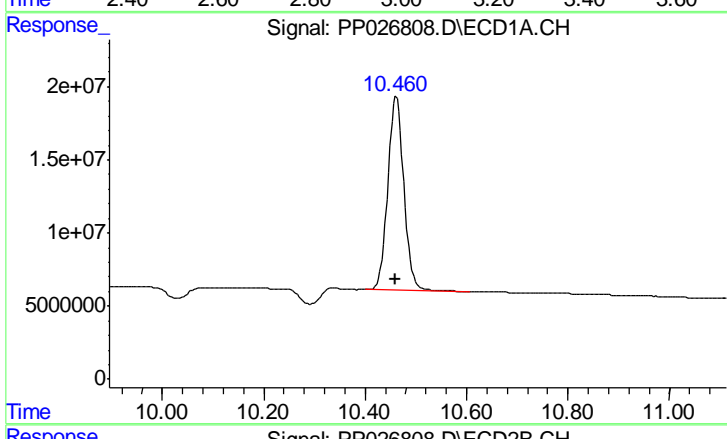
R.T.: 3.313 min
 Delta R.T.: 0.000 min
 Response: 348141442
 Conc: 676.05 ng/ml

Instrument :
 ECD_P
 ClientSampleId :
 HSTDCCC750



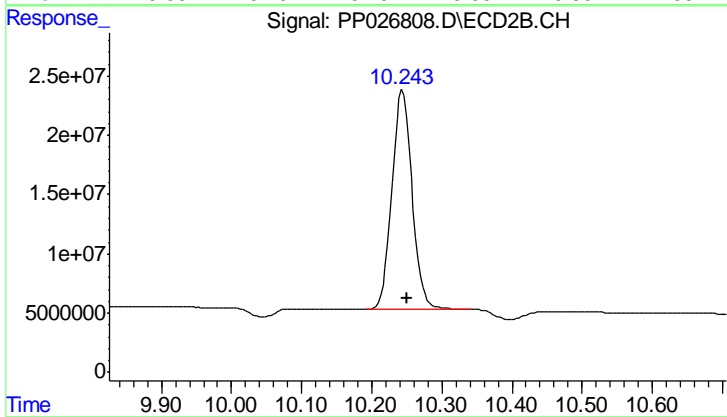
#1 Dalapon

R.T.: 2.975 min
 Delta R.T.: -0.008 min
 Response: 364583969
 Conc: 652.14 ng/ml



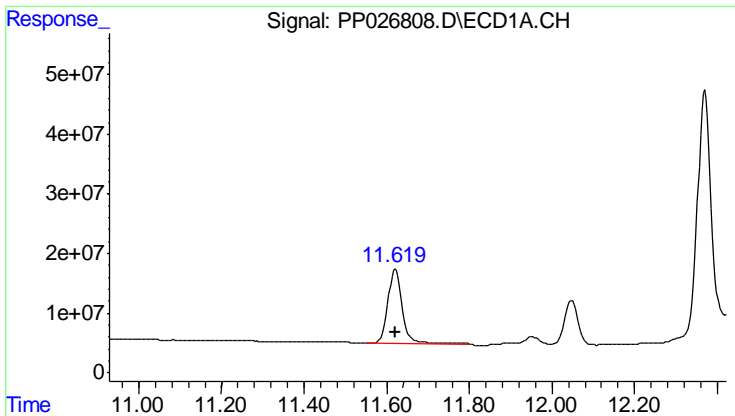
#2 3,5-DICHLOROBENZOIC ACID

R.T.: 10.461 min
 Delta R.T.: 0.000 min
 Response: 294357388
 Conc: 655.08 ng/ml



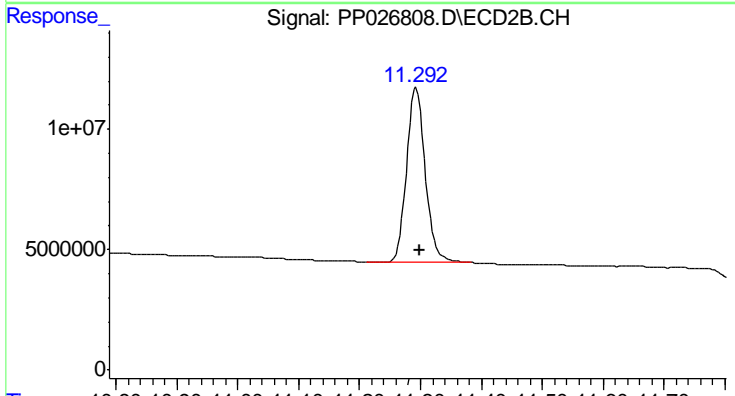
#2 3,5-DICHLOROBENZOIC ACID

R.T.: 10.244 min
 Delta R.T.: -0.006 min
 Response: 368364373
 Conc: 690.43 ng/ml

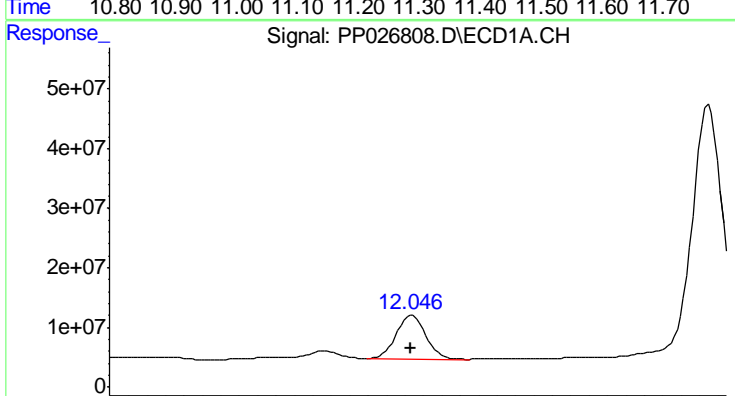


#3 4-Nitrophenol
 R.T.: 11.621 min
 Delta R.T.: 0.000 min
 Response: 296175606
 Conc: 629.15 ng/ml

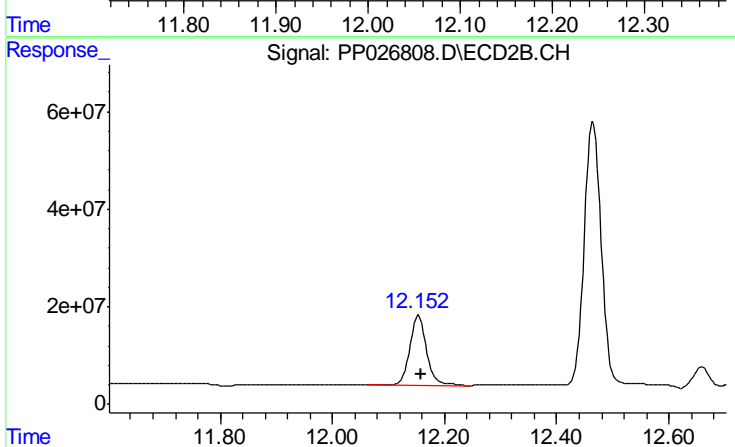
Instrument :
 ECD_P
 ClientSampled :
 HSTDCCC750



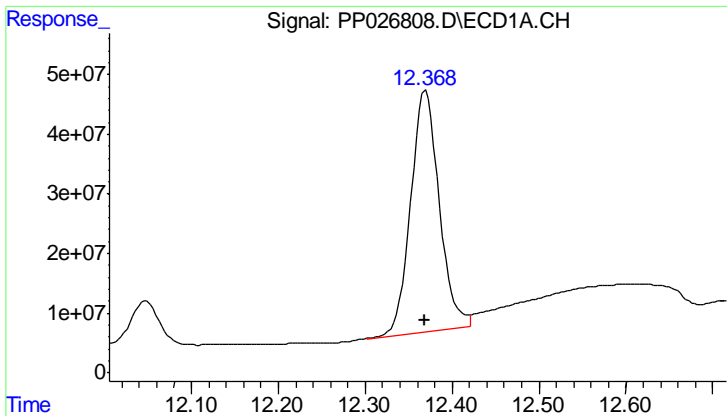
#3 4-Nitrophenol
 R.T.: 11.293 min
 Delta R.T.: -0.007 min
 Response: 154530381
 Conc: 647.87 ng/ml



#4 2,4-DCAA
 R.T.: 12.048 min
 Delta R.T.: 0.000 min
 Response: 165337020
 Conc: 740.91 ng/ml



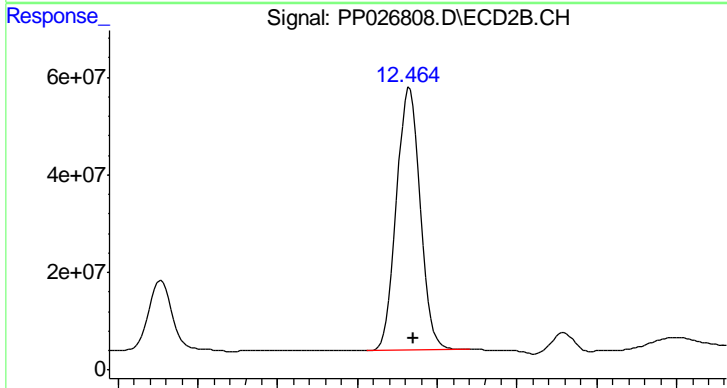
#4 2,4-DCAA
 R.T.: 12.154 min
 Delta R.T.: -0.005 min
 Response: 298371487
 Conc: 746.81 ng/ml



#5 DICAMBA

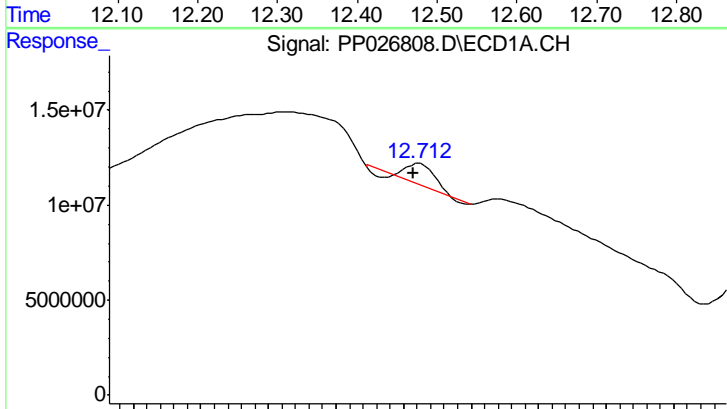
R.T.: 12.370 min
 Delta R.T.: 0.002 min
 Response: 920850806
 Conc: 744.73 ng/ml

Instrument :
 ECD_P
 ClientSampleId :
 HSTDCCC750



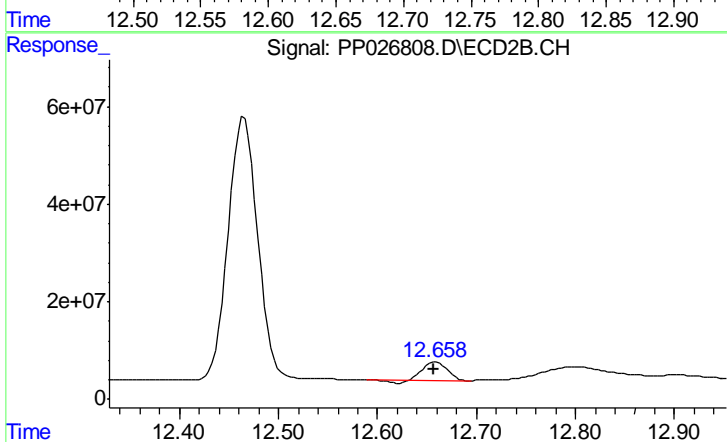
#5 DICAMBA

R.T.: 12.465 min
 Delta R.T.: -0.005 min
 Response: 1119245510
 Conc: 702.32 ng/ml



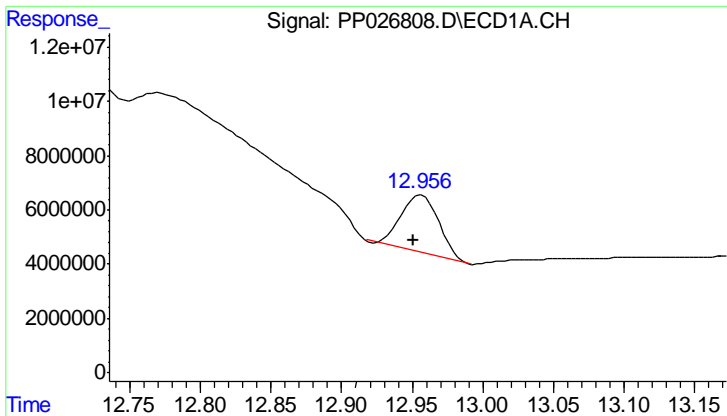
#6 MCPP

R.T.: 12.712 min
 Delta R.T.: 0.004 min
 Response: 14275041
 Conc: 36.20 ug/ml



#6 MCPP

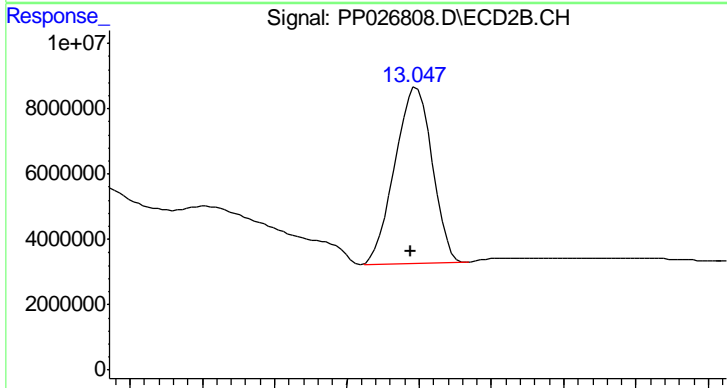
R.T.: 12.659 min
 Delta R.T.: 0.003 min
 Response: 61420763
 Conc: 66.63 ug/ml



#7 MCPA

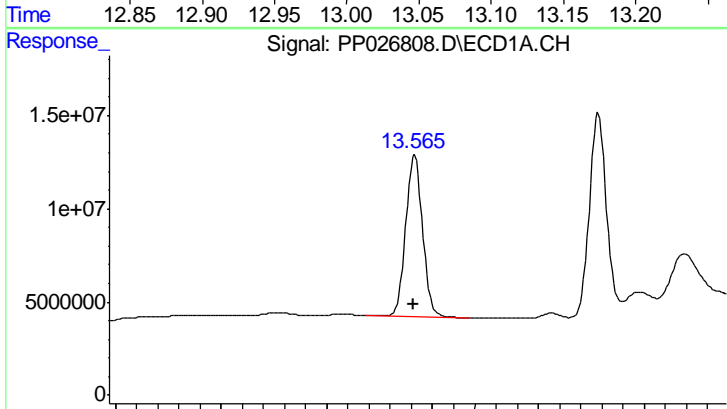
R.T.: 12.956 min
 Delta R.T.: 0.005 min
 Response: 37595215
 Conc: 63.04 ug/ml

Instrument :
 ECD_P
 ClientSampleId :
 HSTDCCC750



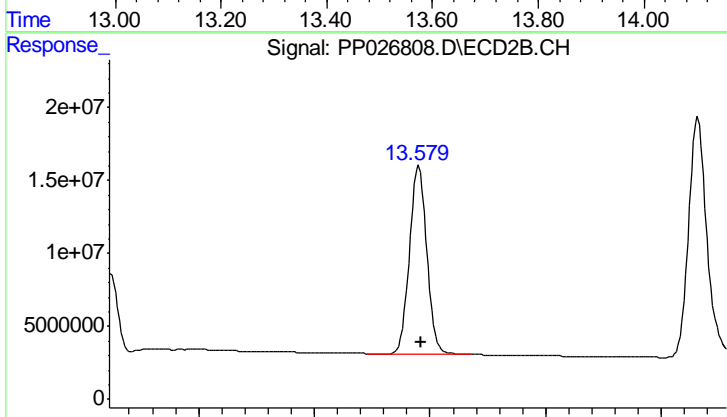
#7 MCPA

R.T.: 13.048 min
 Delta R.T.: 0.004 min
 Response: 96550563
 Conc: 67.22 ug/ml



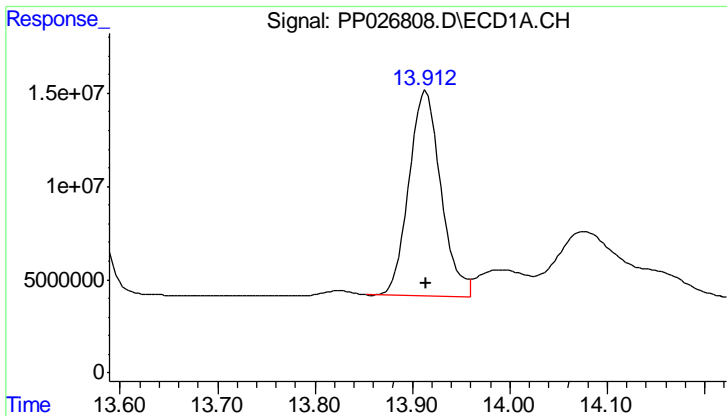
#8 DICHLORPROP

R.T.: 13.566 min
 Delta R.T.: 0.001 min
 Response: 191665545
 Conc: 637.21 ng/ml



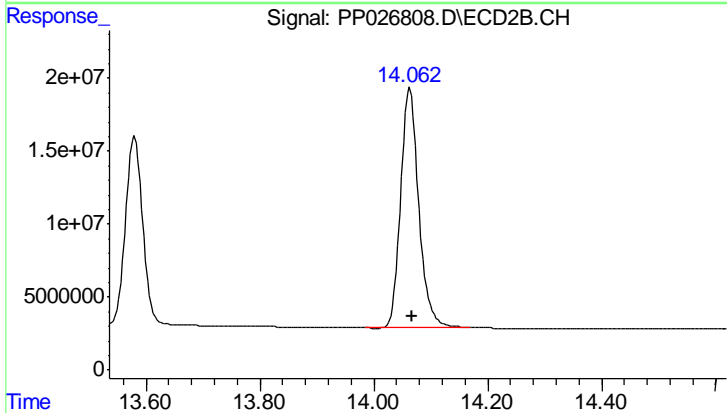
#8 DICHLORPROP

R.T.: 13.580 min
 Delta R.T.: -0.004 min
 Response: 266158514
 Conc: 688.81 ng/ml

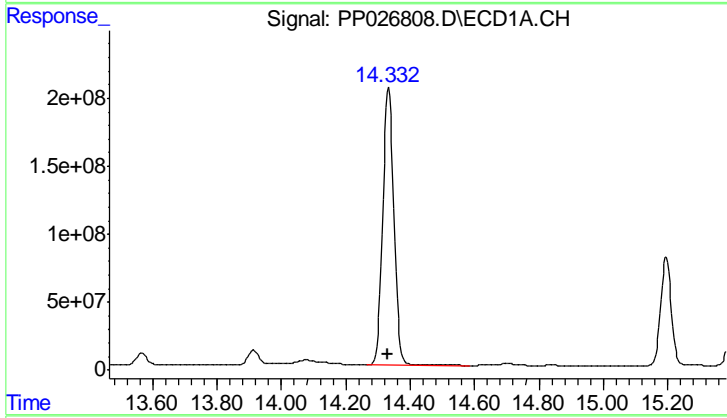


#9 2,4-D
 R.T.: 13.914 min
 Delta R.T.: 0.000 min
 Response: 249654005
 Conc: 694.05 ng/ml

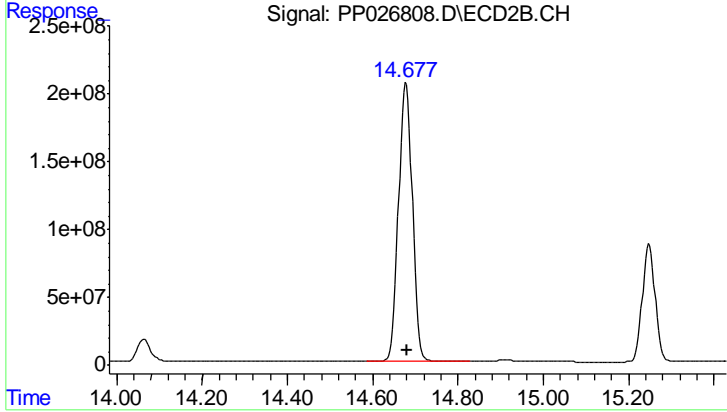
Instrument :
 ECD_P
 ClientSampleId :
 HSTDCCC750



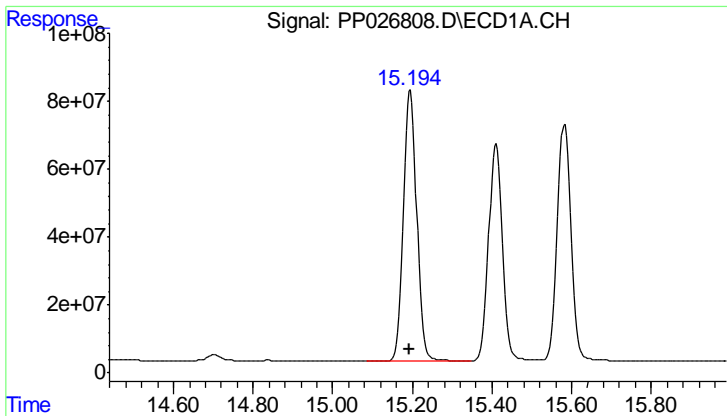
#9 2,4-D
 R.T.: 14.064 min
 Delta R.T.: -0.005 min
 Response: 358832978
 Conc: 684.46 ng/ml



#10 Pentachlorophenol
 R.T.: 14.333 min
 Delta R.T.: 0.002 min
 Response: 4928384044
 Conc: 728.67 ng/ml

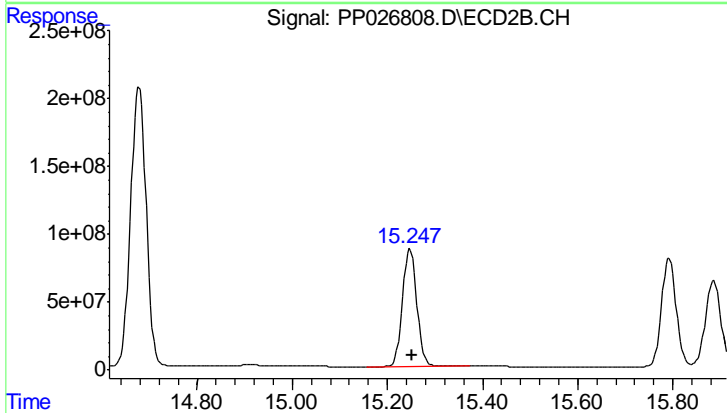


#10 Pentachlorophenol
 R.T.: 14.678 min
 Delta R.T.: -0.002 min
 Response: 4670097292
 Conc: 707.44 ng/ml

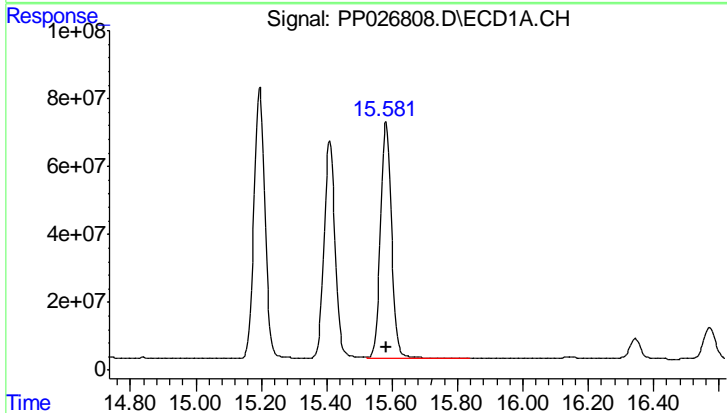


#11 2,4,5-TP (SILVEX)
 R.T.: 15.196 min
 Delta R.T.: 0.001 min
 Response: 1838778878
 Conc: 728.41 ng/ml

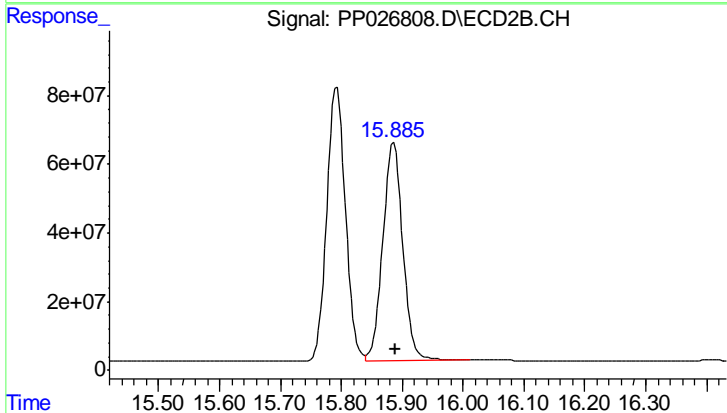
Instrument :
 ECD_P
 ClientSampleId :
 HSTDCCC750



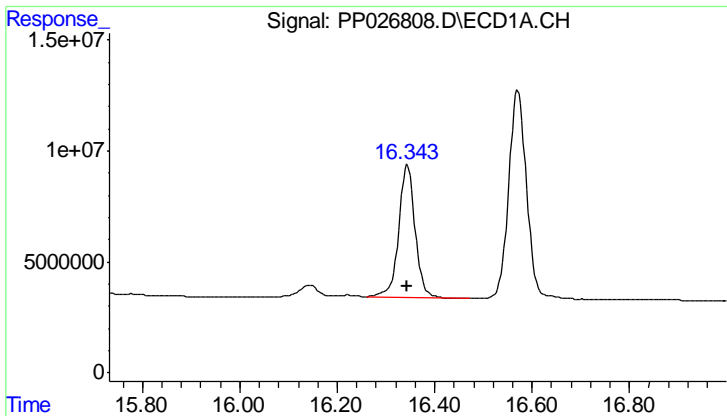
#11 2,4,5-TP (SILVEX)
 R.T.: 15.248 min
 Delta R.T.: -0.003 min
 Response: 1819074863
 Conc: 703.78 ng/ml



#12 2,4,5-T
 R.T.: 15.582 min
 Delta R.T.: 0.000 min
 Response: 1644354756
 Conc: 720.42 ng/ml



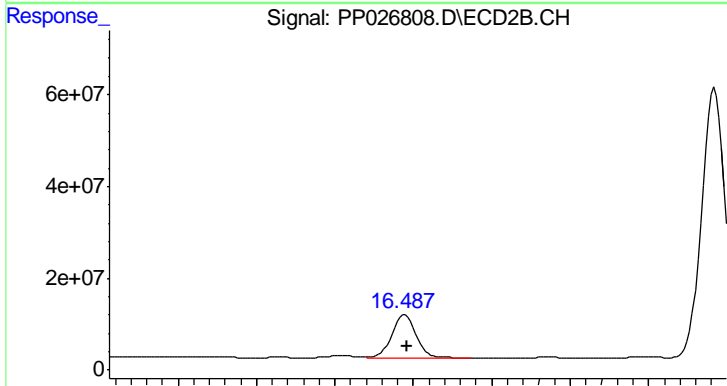
#12 2,4,5-T
 R.T.: 15.886 min
 Delta R.T.: -0.002 min
 Response: 1442585811
 Conc: 655.70 ng/ml



#13 2,4-DB

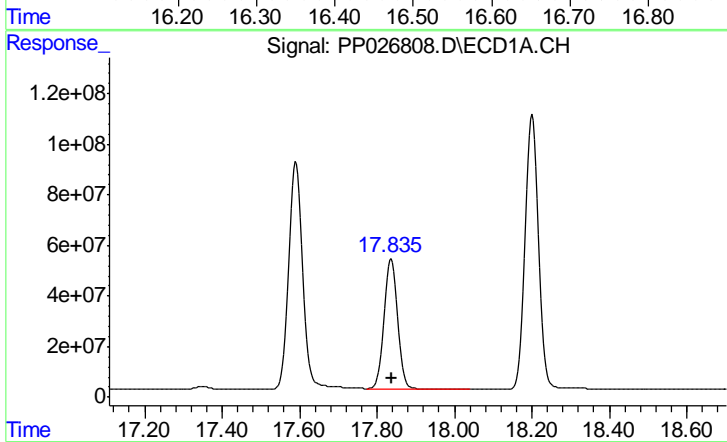
R.T.: 16.344 min
 Delta R.T.: 0.000 min
 Response: 141021811
 Conc: 718.24 ng/ml

Instrument :
 ECD_P
 ClientSampleId :
 HSTDCCC750



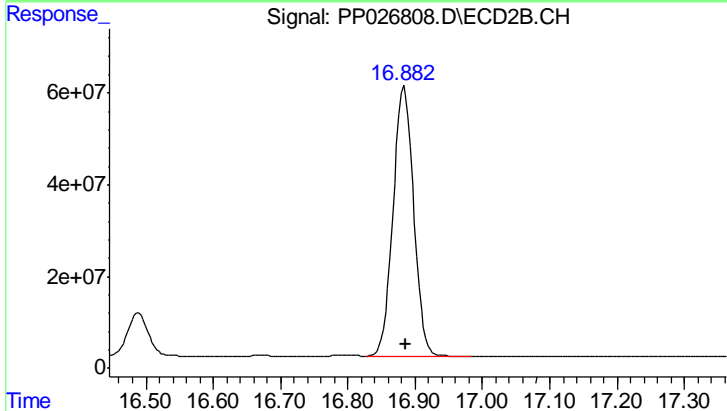
#13 2,4-DB

R.T.: 16.489 min
 Delta R.T.: -0.004 min
 Response: 199632983
 Conc: 690.65 ng/ml



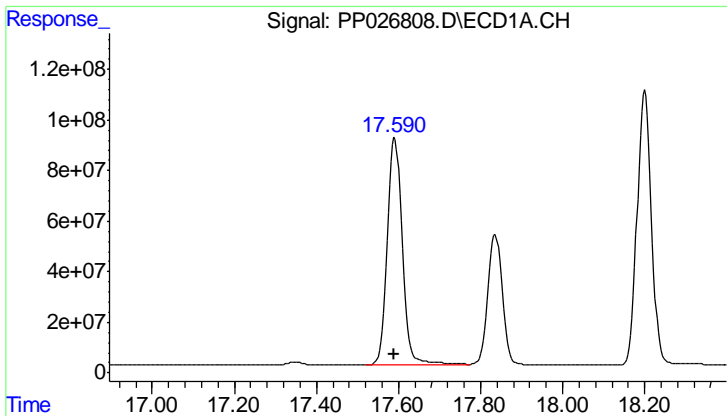
#14 DINOSEB

R.T.: 17.836 min
 Delta R.T.: 0.000 min
 Response: 1277603917
 Conc: 695.25 ng/ml



#14 DINOSEB

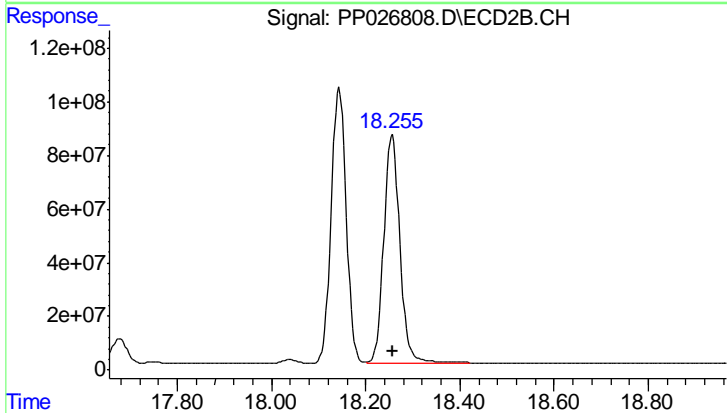
R.T.: 16.884 min
 Delta R.T.: -0.002 min
 Response: 1250272484
 Conc: 700.75 ng/ml



#15 Picloram

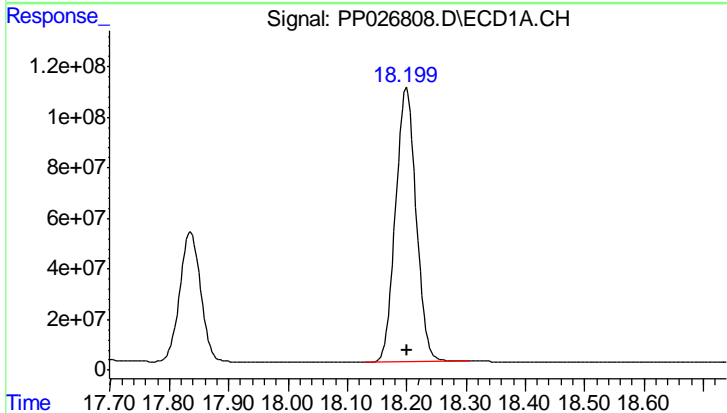
R.T.: 17.591 min
 Delta R.T.: 0.000 min
 Response: 2298718563
 Conc: 602.97 ng/ml

Instrument :
 ECD_P
 ClientSampleId :
 HSTDCCC750



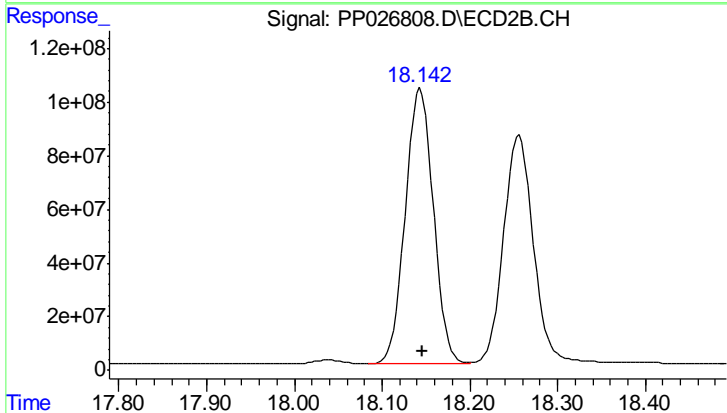
#15 Picloram

R.T.: 18.256 min
 Delta R.T.: -0.002 min
 Response: 2012187796
 Conc: 553.95 ng/ml



#16 DCPA

R.T.: 18.200 min
 Delta R.T.: 0.000 min
 Response: 2622323457
 Conc: 716.97 ng/ml



#16 DCPA

R.T.: 18.144 min
 Delta R.T.: -0.002 min
 Response: 2275926996
 Conc: 708.91 ng/ml