

Data Path : Z:\pestpcbsrv\HPCHEM1\ECD_P\Data\PP072022\
 Data File : PP049652.D
 Signal(s) : Signal #1: ECD1A.ch Signal #2: ECD2B.ch
 Acq On : 20 Jul 2022 21:50
 Operator : YP\AJ
 Sample : AR1248CCC500
 Misc :
 ALS Vial : 5 Sample Multiplier: 1

Instrument :
 ECD_P
 ClientSampleId :

Integration File signal 1: autoint1.e
 Integration File signal 2: autoint2.e
 Quant Time: Jul 21 03:51:46 2022
 Quant Method : Z:\pestpcbsrv\HPCHEM1\ECD_P\methods\PP071422.M
 Quant Title : GC EXTRACTABLES
 QLast Update : Thu Jul 14 06:08:44 2022
 Response via : Initial Calibration
 Integrator: ChemStation

Volume Inj. : 2 µl
 Signal #1 Phase : ZB-MR1 Signal #2 Phase: ZB-MR2
 Signal #1 Info : 30Mx0.32mmx 0.50µ Signal #2 Info : 30M x 0.32mm x 0.25µm

Compound	RT#1	RT#2	Resp#1	Resp#2	ng/ml	ng/ml
System Monitoring Compounds						
1) SA Tetrachlo...	4.351	3.600	74723936	133.3E6	51.493	54.532
2) SA Decachlor...	10.102	8.567	70870613	58501217	50.106	50.233
Target Compounds						
3) L1 AR-1016-1	5.528	4.672	17456467	26963781	308.980	302.489
4) L1 AR-1016-2	5.551	4.691	20842699	28275001	259.214	224.761
5) L1 AR-1016-3	5.612	4.867	10622346	18247766	216.901	277.684 #
6) L1 AR-1016-4	5.711	4.907	11733965	34803229	289.965	654.703 #
7) L1 AR-1016-5	6.007	5.119	26789847	42243232	654.533	614.387
8) L2 AR-1221-1	0.000	3.808	0	695176	N.D.	23.031 #
9) L2 AR-1221-2	4.657	3.896	1515773	2399532	115.732	105.050
10) L2 AR-1221-3	4.728	3.969	2378309	3961130	59.435	58.212
11) L3 AR-1232-1	4.728	3.969	2378309	3961130	77.623	77.215
12) L3 AR-1232-2	5.258	4.691	7784453	28275001	521.271	589.570
13) L3 AR-1232-3	5.551	4.867	20842699	18247766	689.544	731.002
14) L3 AR-1232-4	5.711	4.948	11733965	35718156	760.993	1561.573 #
15) L3 AR-1232-5	5.801	5.119	23791327	42243232	1907.366	1642.019
16) L4 AR-1242-1	5.528	4.672	17456467	26963781	390.446	384.436
17) L4 AR-1242-2	5.551	4.691	20842699	28275001	330.573	286.544
18) L4 AR-1242-3	5.612	4.867	10622346	18247766	273.205	349.666 #
19) L4 AR-1242-4	5.711	4.948	11733965	35718156	363.727	681.491 #
20) L4 AR-1242-5	6.452	5.468	29801536	55324100	866.542	870.356
21) L5 AR-1248-1	5.528	4.672	17456467	26963781	495.563	479.526
22) L5 AR-1248-2	5.801	4.907	23791327	34803229	480.068	467.608
23) L5 AR-1248-3	6.007	4.948	26789847	35718156	483.719	467.776
24) L5 AR-1248-4	6.413	5.119	31179093	42243232	502.989	465.231
25) L5 AR-1248-5	6.452	5.509	29801536	38686182	506.234	464.166
26) L6 AR-1254-1	6.385	5.468	23720983	55324100	376.636	436.204
27) L6 AR-1254-2	6.610	5.615	30391767	16925153	311.959	153.126 #
28) L6 AR-1254-3	6.974	6.017	16453540	23736100	159.243	145.822
29) L6 AR-1254-4	7.262	6.244	11599998	15626906	144.902	161.507
30) L6 AR-1254-5	7.681	6.661	3147076	5067547	35.407	38.241
31) L7 AR-1260-1	7.135	6.161	2061769	11554512	27.268	110.252 #
32) L7 AR-1260-2	7.391	6.332	2809499	2220864	29.678	18.457 #
33) L7 AR-1260-3	0.000	6.486	0	2374936	N.D.	20.989 #
34) L7 AR-1260-4	7.975	6.957	1454328	582972	18.796	7.621 #
35) L7 AR-1260-5	0.000	7.197	0	960350	N.D.	5.616 #
37) L8 AR-1262-2	0.000	6.957	0	582972	N.D.	5.769 #
38) L8 AR-1262-3	0.000	7.480	0	512475	N.D.	7.917 #
39) L8 AR-1262-4	0.000	7.543	0	814239	N.D.	6.365 #
40) L8 AR-1262-5	0.000	8.035	0	301772	N.D.	5.495 #
41) L9 AR-1268-1	0.000	7.480	0	512475	N.D.	2.790 #
42) L9 AR-1268-2	0.000	7.543	0	814239	N.D.	4.706 #

Data Path : Z:\pestpcbsrv\HPCHEM1\ECD_P\Data\PP072022\
 Data File : PP049652.D
 Signal(s) : Signal #1: ECD1A.ch Signal #2: ECD2B.ch
 Acq On : 20 Jul 2022 21:50
 Operator : YP\AJ
 Sample : AR1248CCC500
 Misc :
 ALS Vial : 5 Sample Multiplier: 1

Instrument :
 ECD_P
 ClientSampleId :

Integration File signal 1: autoint1.e
 Integration File signal 2: autoint2.e
 Quant Time: Jul 21 03:51:46 2022
 Quant Method : Z:\pestpcbsrv\HPCHEM1\ECD_P\methods\PP071422.M
 Quant Title : GC EXTRACTABLES
 QLast Update : Thu Jul 14 06:08:44 2022
 Response via : Initial Calibration
 Integrator: ChemStation

Volume Inj. : 2 µl
 Signal #1 Phase : ZB-MR1 Signal #2 Phase: ZB-MR2
 Signal #1 Info : 30Mx0.32mmx 0.50µ Signal #2 Info : 30M x 0.32mm x 0.25µm

	Compound	RT#1	RT#2	Resp#1	Resp#2	ng/ml	ng/ml
44)	L9 AR-1268-4	0.000	8.035	0	301772	N.D.	4.991 #
45)	L9 AR-1268-5	9.785f	8.317	3025608	440336	5.876	1.076 #

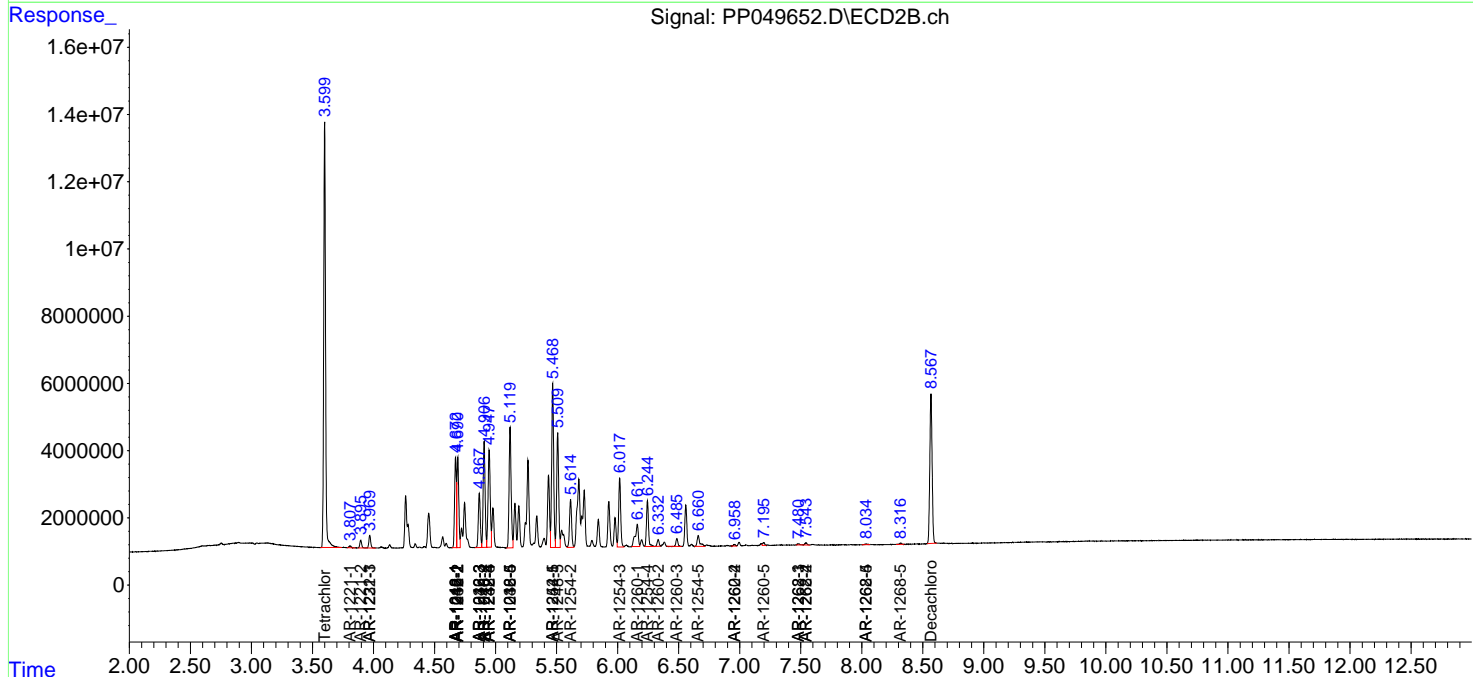
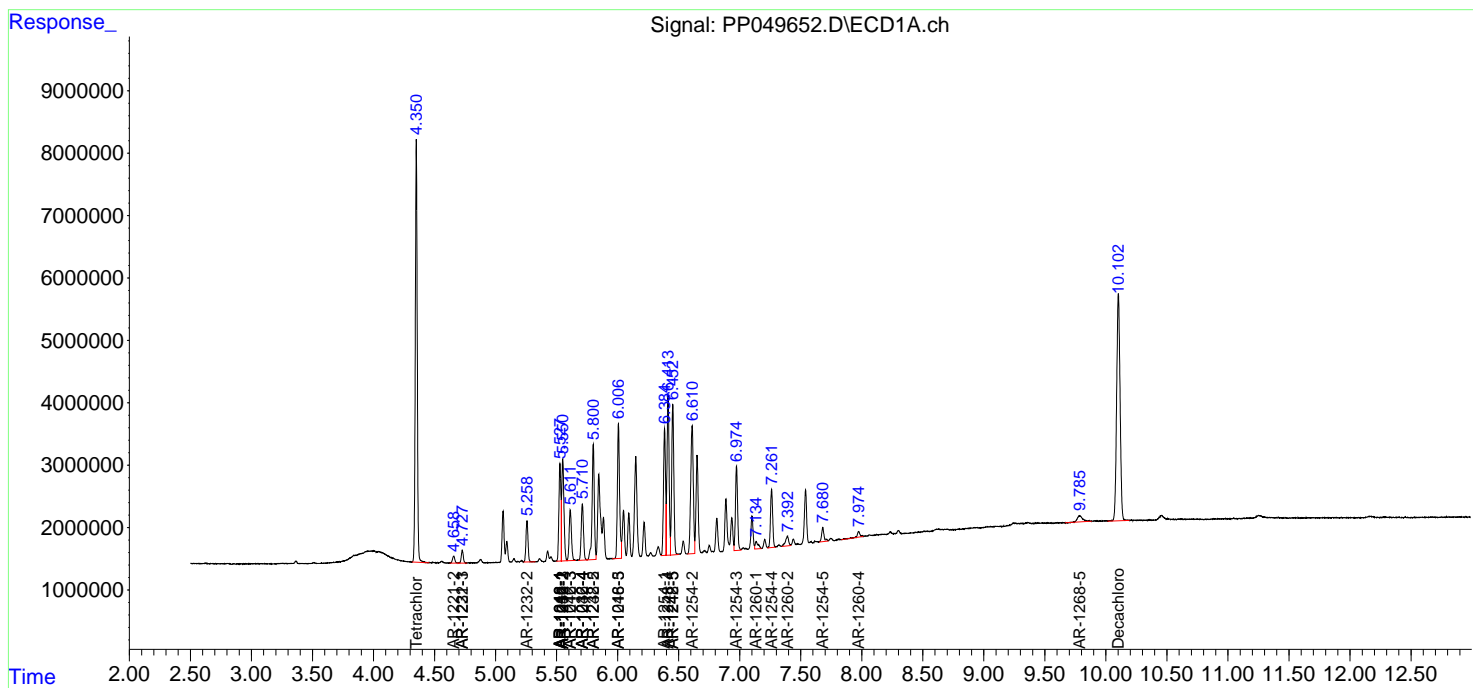
(f)=RT Delta > 1/2 Window (#)=Amounts differ by > 25% (m)=manual int.

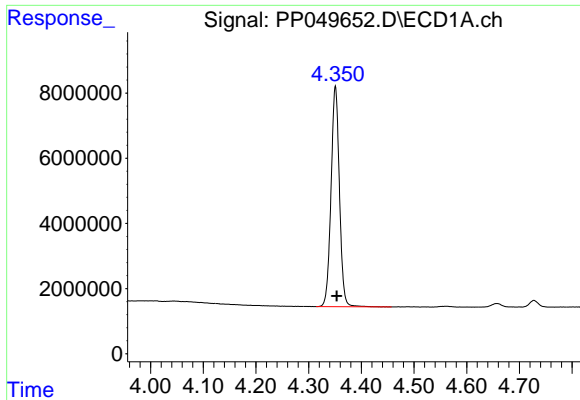
Data Path : Z:\pestpcbsrv\HPCHEM1\ECD_P\Data\PP072022\
 Data File : PP049652.D
 Signal(s) : Signal #1: ECD1A.ch Signal #2: ECD2B.ch
 Acq On : 20 Jul 2022 21:50
 Operator : YP\AJ
 Sample : AR1248CCC500
 Misc :
 ALS Vial : 5 Sample Multiplier: 1

Instrument :
 ECD_P
 ClientSampleId :

Integration File signal 1: autoint1.e
 Integration File signal 2: autoint2.e
 Quant Time: Jul 21 03:51:46 2022
 Quant Method : Z:\pestpcbsrv\HPCHEM1\ECD_P\methods\PP071422.M
 Quant Title : GC EXTRACTABLES
 QLast Update : Thu Jul 14 06:08:44 2022
 Response via : Initial Calibration
 Integrator: ChemStation

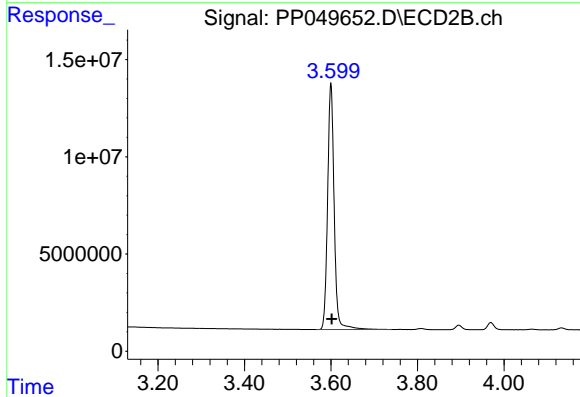
Volume Inj. : 2 µl
 Signal #1 Phase : ZB-MR1 Signal #2 Phase: ZB-MR2
 Signal #1 Info : 30Mx0.32mmx 0.50µ Signal #2 Info : 30M x 0.32mm x 0.25µm



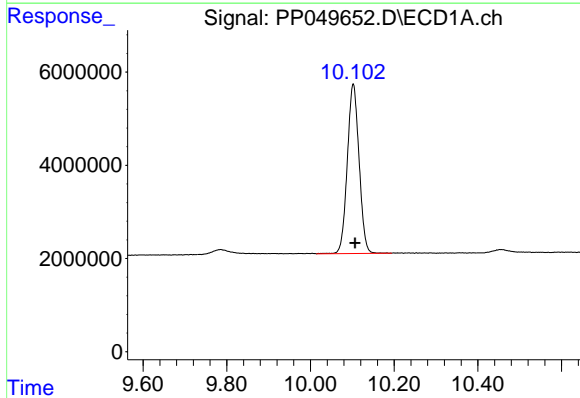


#1 Tetrachloro-m-xylene
 R.T.: 4.351 min
 Delta R.T.: -0.002 min
 Response: 74723936
 Conc: 51.49 ng/ml

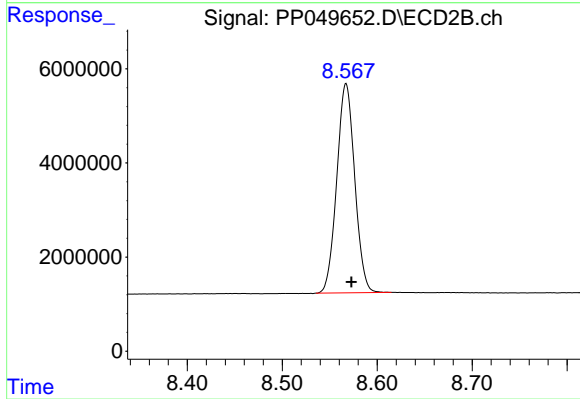
Instrument :
 ECD_P
 ClientSampleId :



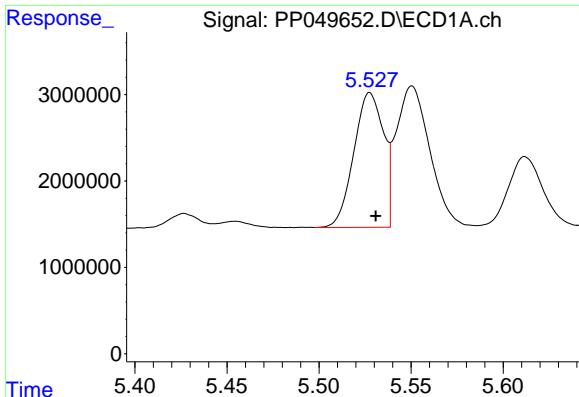
#1 Tetrachloro-m-xylene
 R.T.: 3.600 min
 Delta R.T.: -0.002 min
 Response: 133293655
 Conc: 54.53 ng/ml



#2 Decachlorobiphenyl
 R.T.: 10.102 min
 Delta R.T.: -0.005 min
 Response: 70870613
 Conc: 50.11 ng/ml



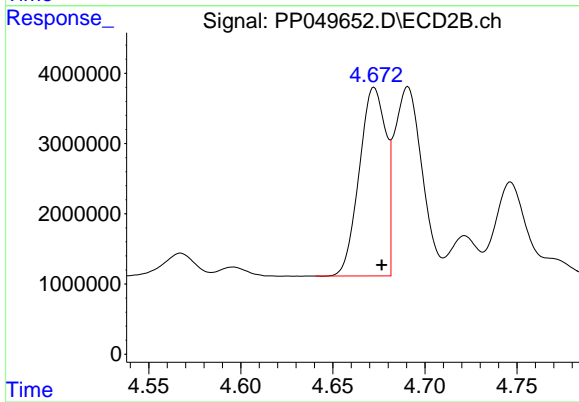
#2 Decachlorobiphenyl
 R.T.: 8.567 min
 Delta R.T.: -0.005 min
 Response: 58501217
 Conc: 50.23 ng/ml



#3 AR-1016-1

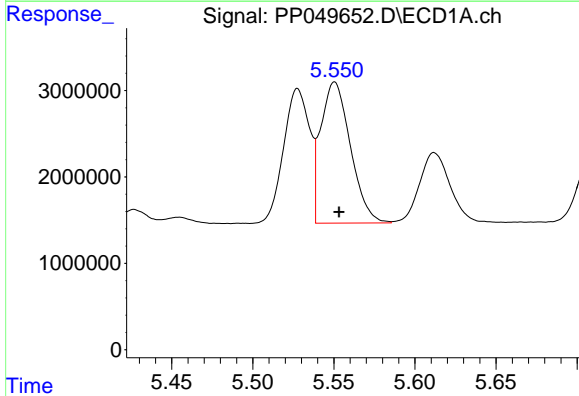
R.T.: 5.528 min
 Delta R.T.: -0.003 min
 Response: 17456467
 Conc: 308.98 ng/ml

Instrument :
 ECD_P
 ClientSampleId :



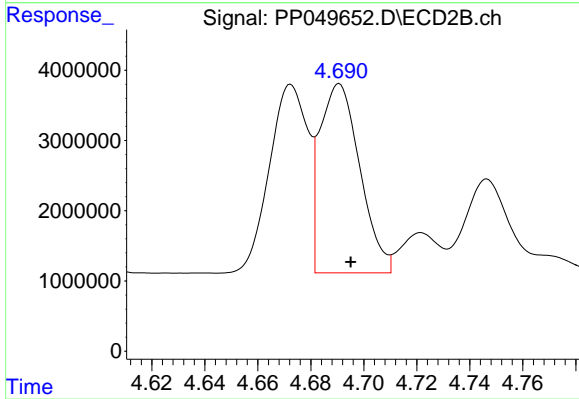
#3 AR-1016-1

R.T.: 4.672 min
 Delta R.T.: -0.004 min
 Response: 26963781
 Conc: 302.49 ng/ml



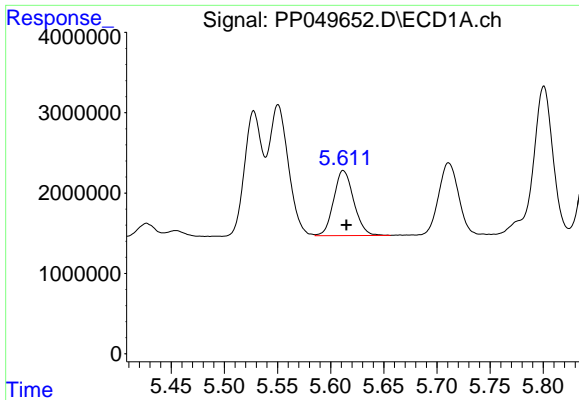
#4 AR-1016-2

R.T.: 5.551 min
 Delta R.T.: -0.003 min
 Response: 20842699
 Conc: 259.21 ng/ml



#4 AR-1016-2

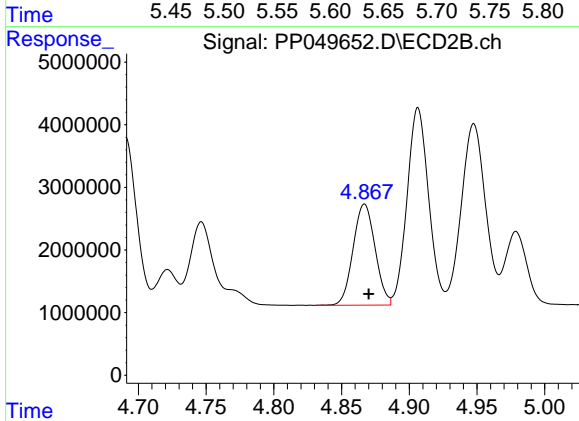
R.T.: 4.691 min
 Delta R.T.: -0.004 min
 Response: 28275001
 Conc: 224.76 ng/ml



#5 AR-1016-3

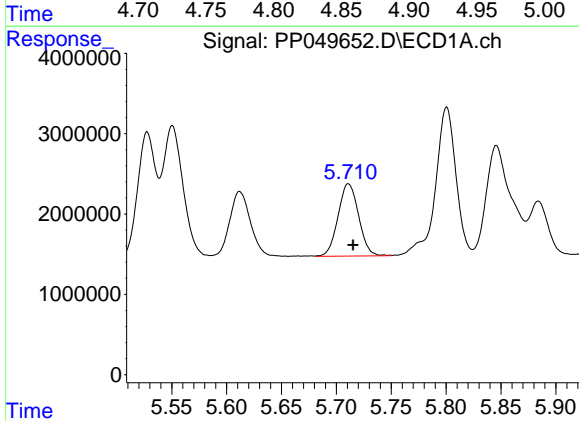
R.T.: 5.612 min
 Delta R.T.: -0.003 min
 Response: 10622346
 Conc: 216.90 ng/ml

Instrument :
 ECD_P
 ClientSampleId :



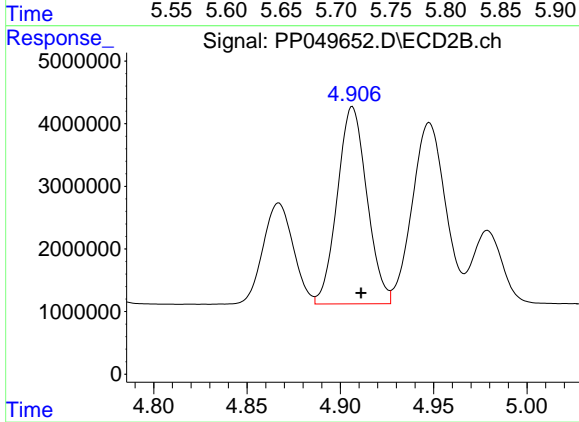
#5 AR-1016-3

R.T.: 4.867 min
 Delta R.T.: -0.003 min
 Response: 18247766
 Conc: 277.68 ng/ml



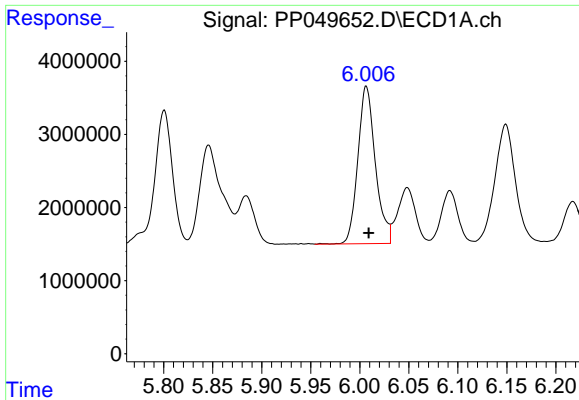
#6 AR-1016-4

R.T.: 5.711 min
 Delta R.T.: -0.004 min
 Response: 11733965
 Conc: 289.96 ng/ml



#6 AR-1016-4

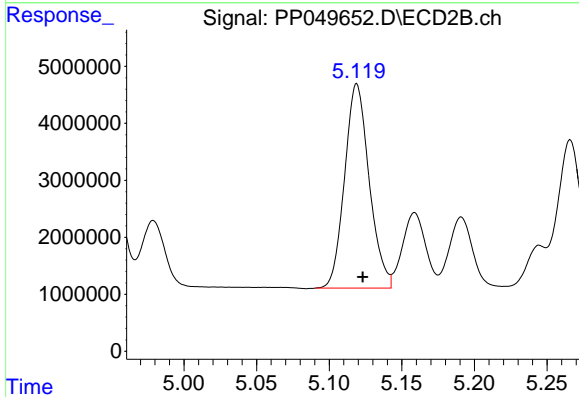
R.T.: 4.907 min
 Delta R.T.: -0.005 min
 Response: 34803229
 Conc: 654.70 ng/ml



#7 AR-1016-5

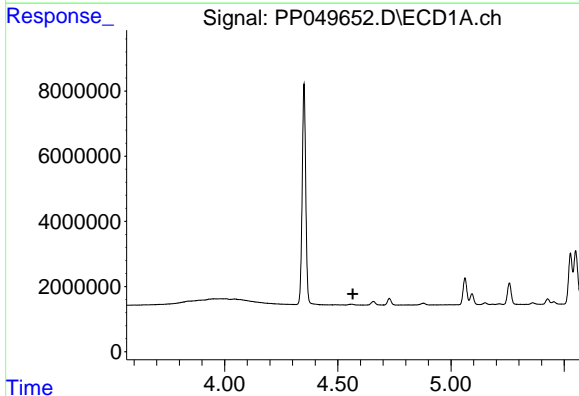
R.T.: 6.007 min
 Delta R.T.: -0.002 min
 Response: 26789847
 Conc: 654.53 ng/ml

Instrument :
 ECD_P
 ClientSampleId :



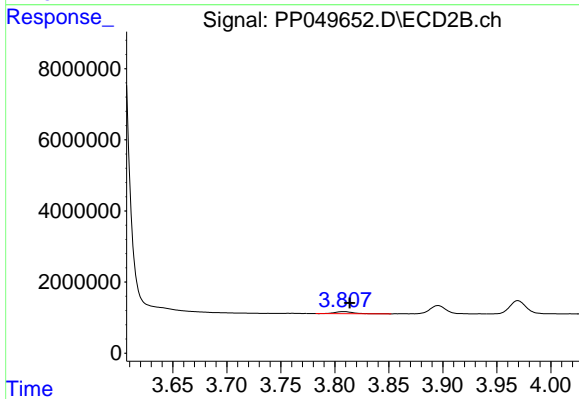
#7 AR-1016-5

R.T.: 5.119 min
 Delta R.T.: -0.004 min
 Response: 42243232
 Conc: 614.39 ng/ml



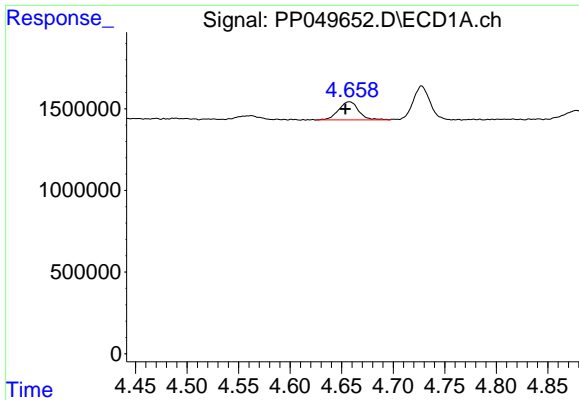
#8 AR-1221-1

R.T.: 0.000 min
 Exp R.T. : 4.566 min
 Response: 0
 Conc: N.D.



#8 AR-1221-1

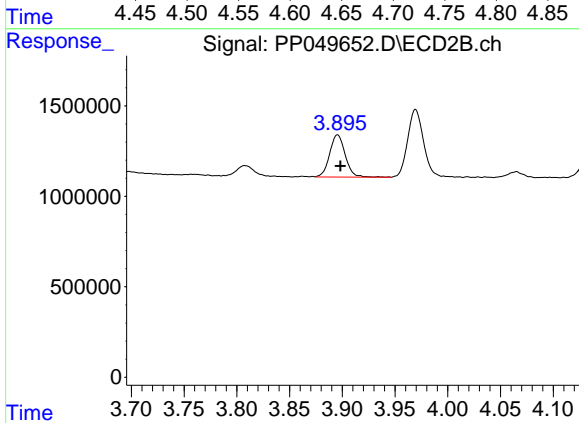
R.T.: 3.808 min
 Delta R.T.: -0.006 min
 Response: 695176
 Conc: 23.03 ng/ml



#9 AR-1221-2

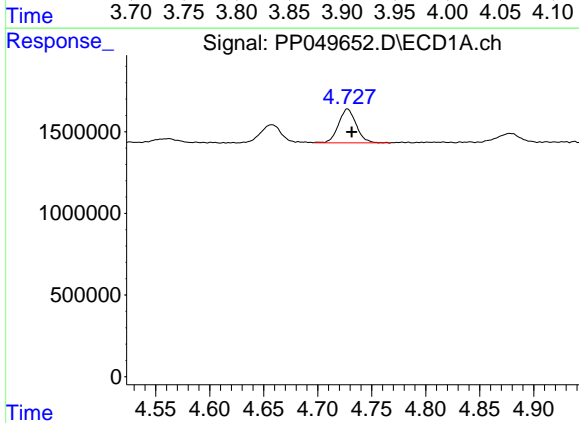
R.T.: 4.657 min
 Delta R.T.: 0.004 min
 Response: 1515773
 Conc: 115.73 ng/ml

Instrument :
 ECD_P
 ClientSampleId :



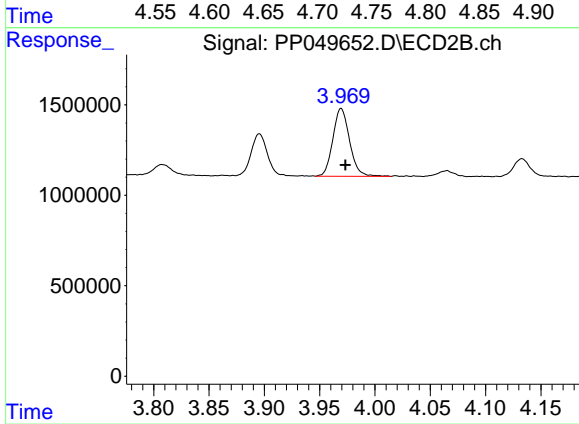
#9 AR-1221-2

R.T.: 3.896 min
 Delta R.T.: -0.003 min
 Response: 2399532
 Conc: 105.05 ng/ml



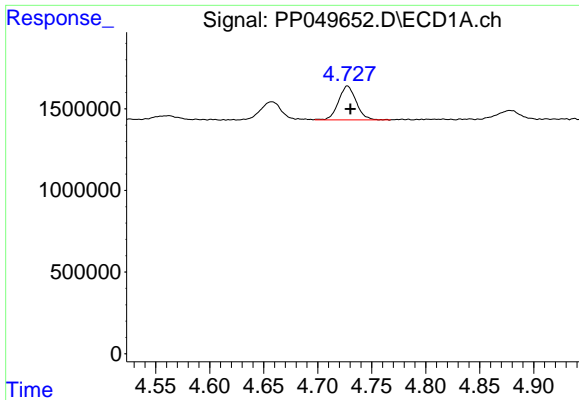
#10 AR-1221-3

R.T.: 4.728 min
 Delta R.T.: -0.004 min
 Response: 2378309
 Conc: 59.43 ng/ml



#10 AR-1221-3

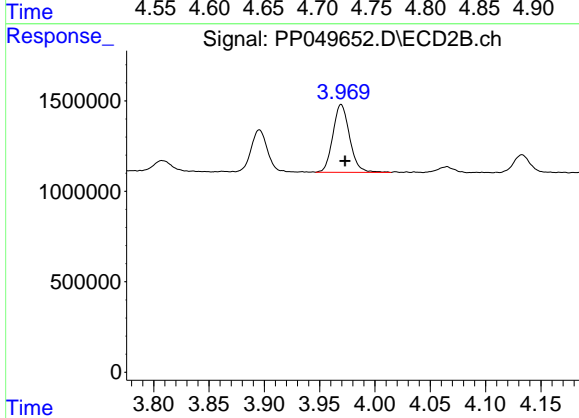
R.T.: 3.969 min
 Delta R.T.: -0.004 min
 Response: 3961130
 Conc: 58.21 ng/ml



#11 AR-1232-1

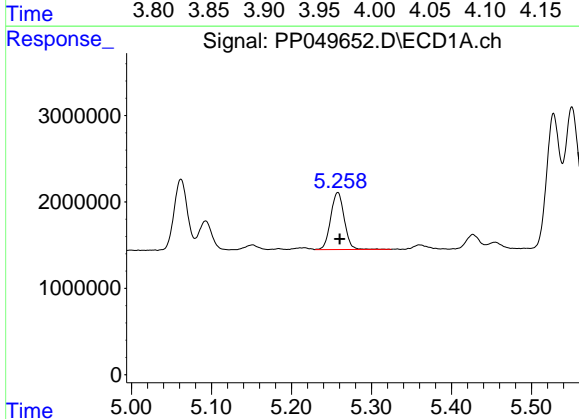
R.T.: 4.728 min
 Delta R.T.: -0.003 min
 Response: 2378309
 Conc: 77.62 ng/ml

Instrument :
 ECD_P
 ClientSampleId :



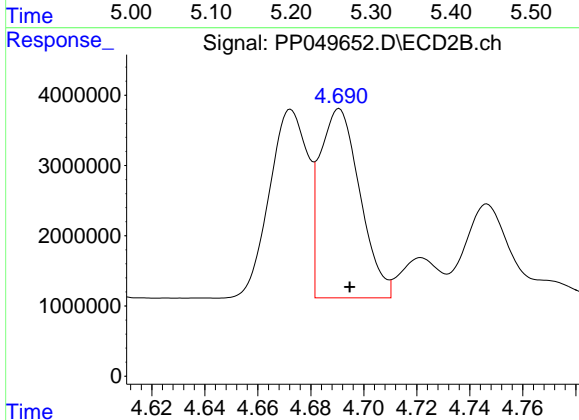
#11 AR-1232-1

R.T.: 3.969 min
 Delta R.T.: -0.003 min
 Response: 3961130
 Conc: 77.21 ng/ml



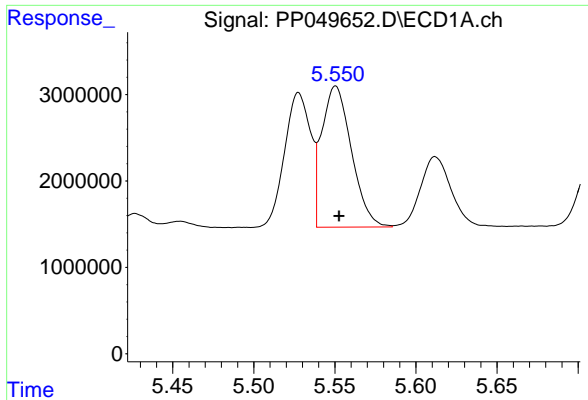
#12 AR-1232-2

R.T.: 5.258 min
 Delta R.T.: -0.002 min
 Response: 7784453
 Conc: 521.27 ng/ml



#12 AR-1232-2

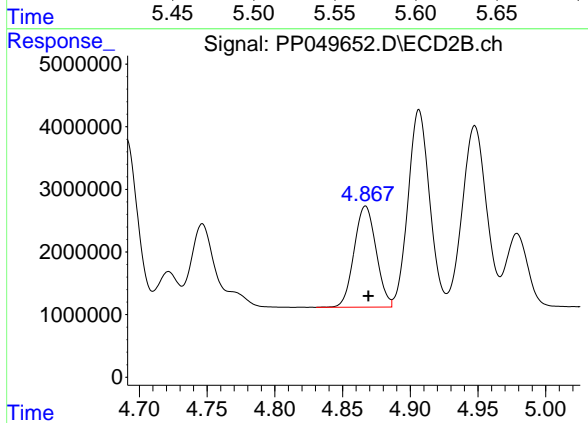
R.T.: 4.691 min
 Delta R.T.: -0.004 min
 Response: 28275001
 Conc: 589.57 ng/ml



#13 AR-1232-3

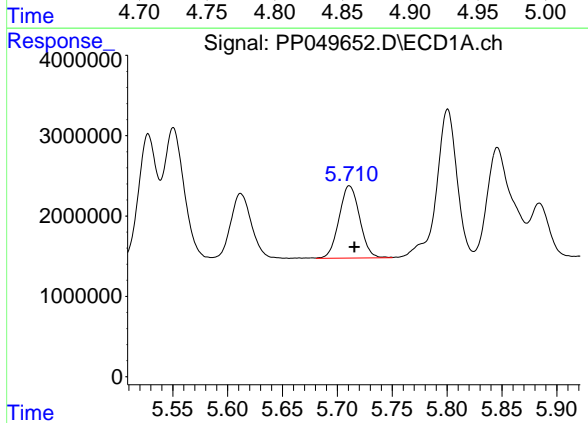
R.T.: 5.551 min
 Delta R.T.: -0.002 min
 Response: 20842699
 Conc: 689.54 ng/ml

Instrument :
 ECD_P
 ClientSampleId :



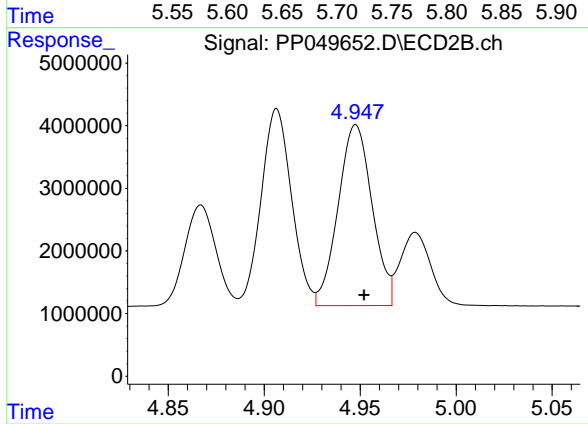
#13 AR-1232-3

R.T.: 4.867 min
 Delta R.T.: -0.002 min
 Response: 18247766
 Conc: 731.00 ng/ml



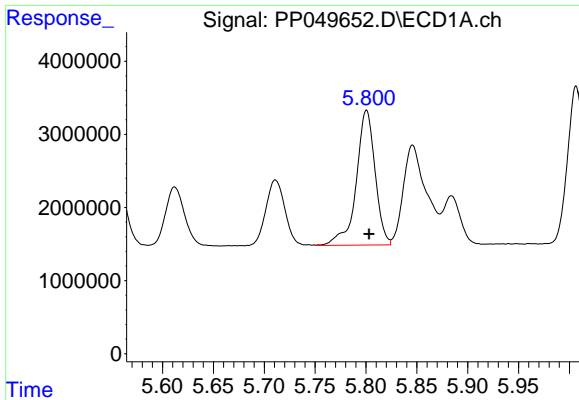
#14 AR-1232-4

R.T.: 5.711 min
 Delta R.T.: -0.005 min
 Response: 11733965
 Conc: 760.99 ng/ml



#14 AR-1232-4

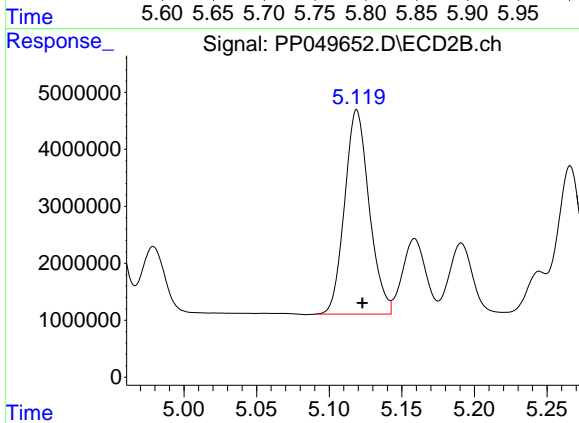
R.T.: 4.948 min
 Delta R.T.: -0.004 min
 Response: 35718156
 Conc: 1561.57 ng/ml



#15 AR-1232-5

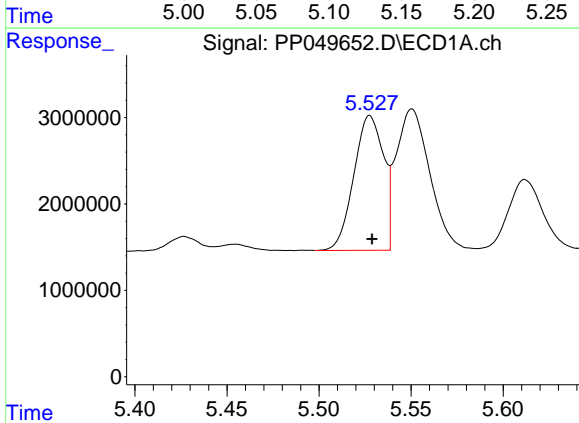
R.T.: 5.801 min
 Delta R.T.: -0.003 min
 Response: 23791327
 Conc: 1907.37 ng/ml

Instrument :
 ECD_P
 ClientSampleId :



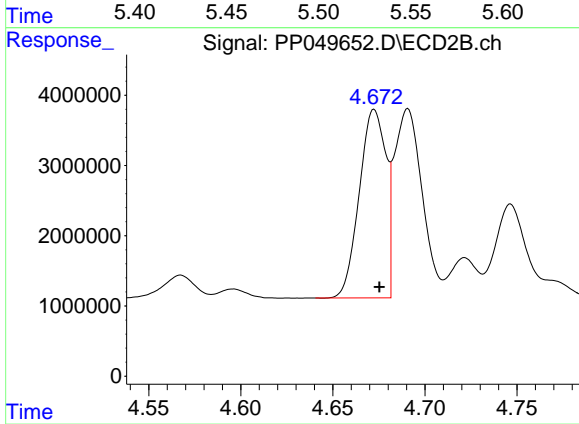
#15 AR-1232-5

R.T.: 5.119 min
 Delta R.T.: -0.004 min
 Response: 42243232
 Conc: 1642.02 ng/ml



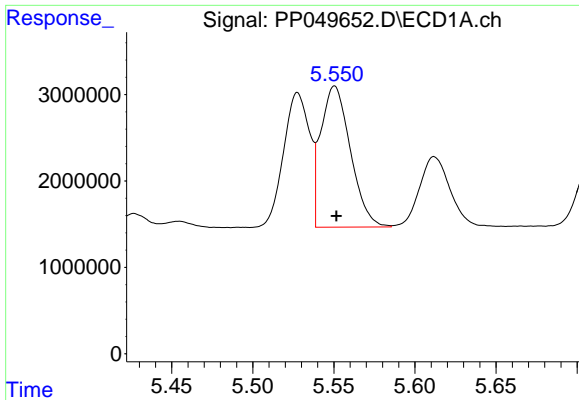
#16 AR-1242-1

R.T.: 5.528 min
 Delta R.T.: 0.000 min
 Response: 17456467
 Conc: 390.45 ng/ml



#16 AR-1242-1

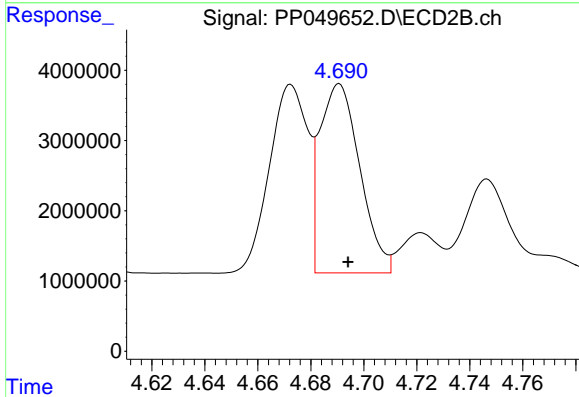
R.T.: 4.672 min
 Delta R.T.: -0.003 min
 Response: 26963781
 Conc: 384.44 ng/ml



#17 AR-1242-2

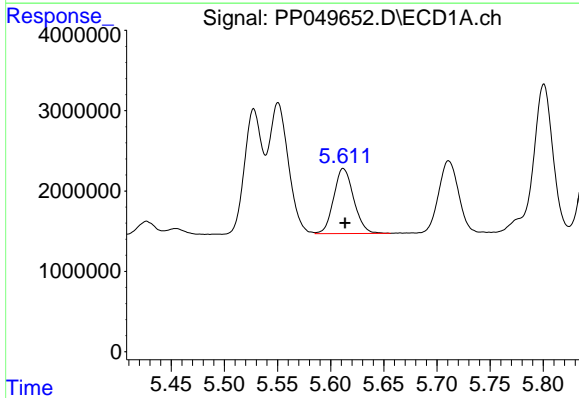
R.T.: 5.551 min
 Delta R.T.: -0.001 min
 Response: 20842699
 Conc: 330.57 ng/ml

Instrument :
 ECD_P
 ClientSampleId :



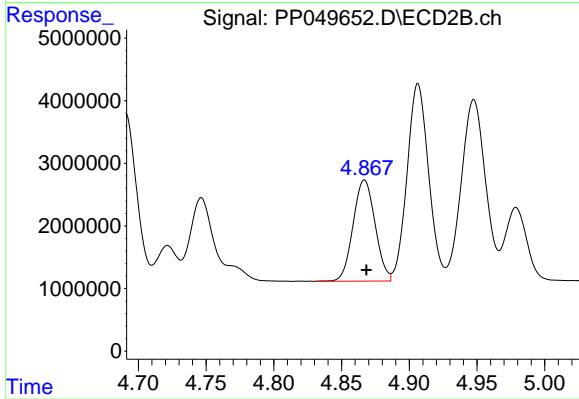
#17 AR-1242-2

R.T.: 4.691 min
 Delta R.T.: -0.003 min
 Response: 28275001
 Conc: 286.54 ng/ml



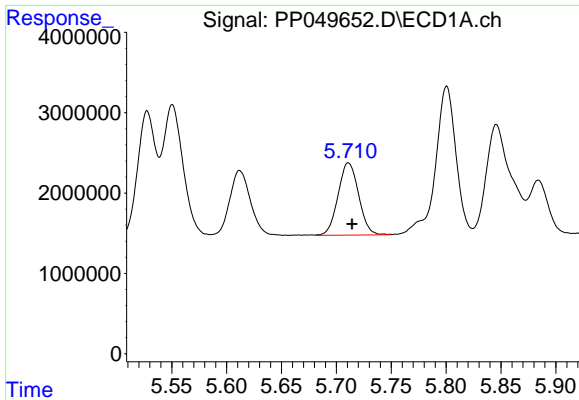
#18 AR-1242-3

R.T.: 5.612 min
 Delta R.T.: -0.001 min
 Response: 10622346
 Conc: 273.20 ng/ml



#18 AR-1242-3

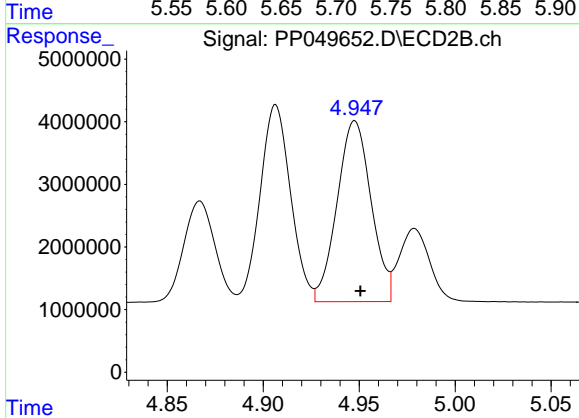
R.T.: 4.867 min
 Delta R.T.: -0.001 min
 Response: 18247766
 Conc: 349.67 ng/ml



#19 AR-1242-4

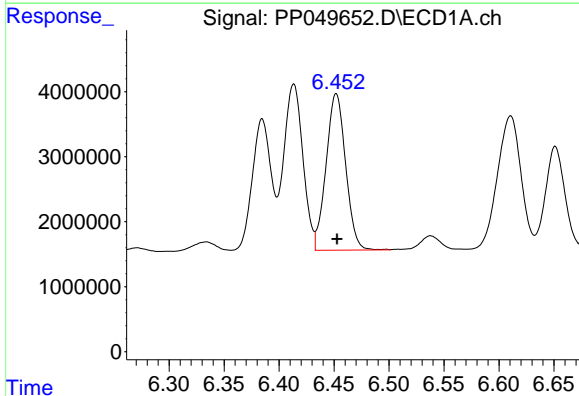
R.T.: 5.711 min
 Delta R.T.: -0.003 min
 Response: 11733965
 Conc: 363.73 ng/ml

Instrument :
 ECD_P
 ClientSampleId :



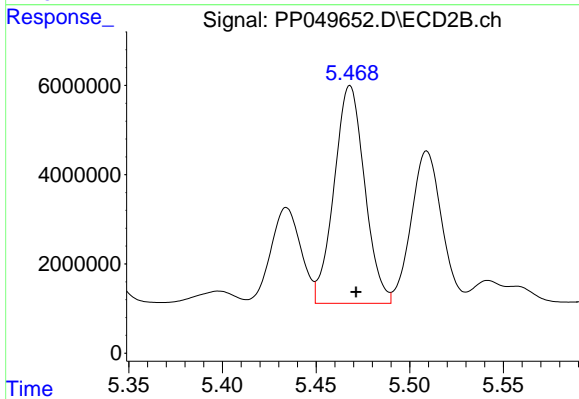
#19 AR-1242-4

R.T.: 4.948 min
 Delta R.T.: -0.003 min
 Response: 35718156
 Conc: 681.49 ng/ml



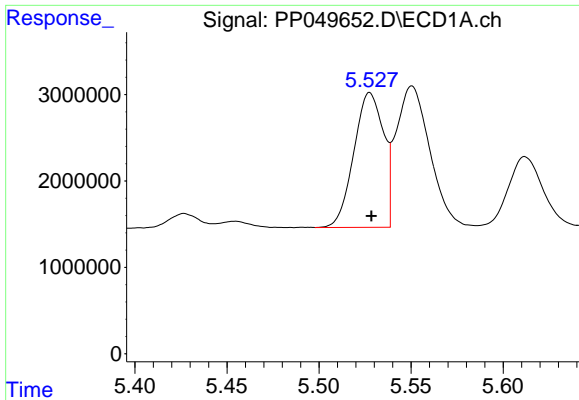
#20 AR-1242-5

R.T.: 6.452 min
 Delta R.T.: 0.000 min
 Response: 29801536
 Conc: 866.54 ng/ml



#20 AR-1242-5

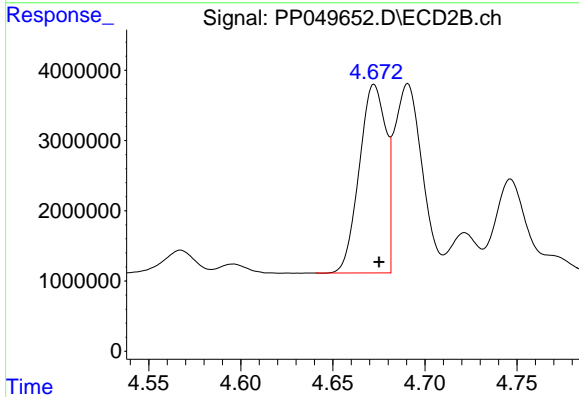
R.T.: 5.468 min
 Delta R.T.: -0.003 min
 Response: 55324100
 Conc: 870.36 ng/ml



#21 AR-1248-1

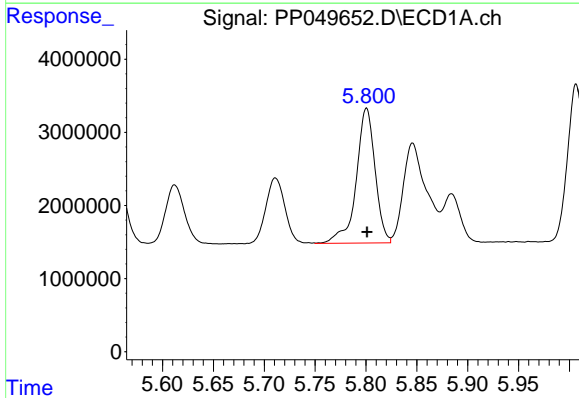
R.T.: 5.528 min
 Delta R.T.: 0.000 min
 Response: 17456467
 Conc: 495.56 ng/ml

Instrument :
 ECD_P
 ClientSampleId :



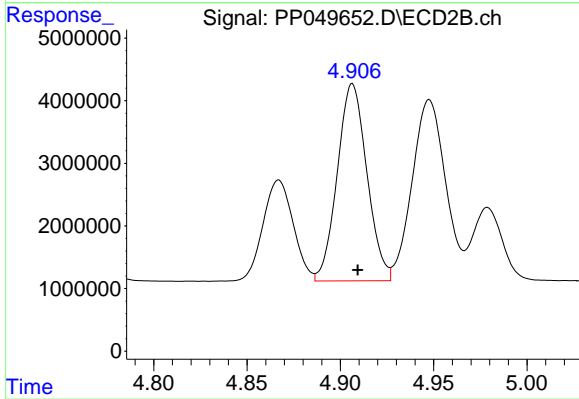
#21 AR-1248-1

R.T.: 4.672 min
 Delta R.T.: -0.003 min
 Response: 26963781
 Conc: 479.53 ng/ml



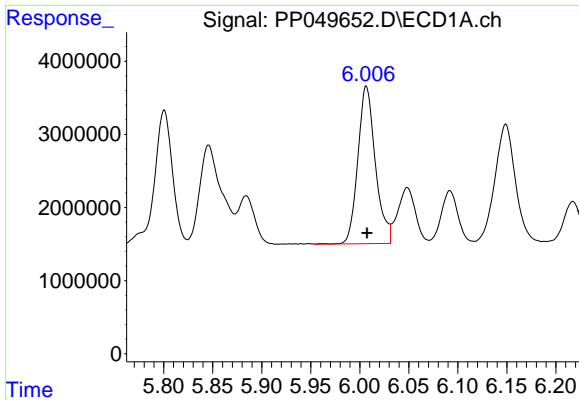
#22 AR-1248-2

R.T.: 5.801 min
 Delta R.T.: 0.000 min
 Response: 23791327
 Conc: 480.07 ng/ml



#22 AR-1248-2

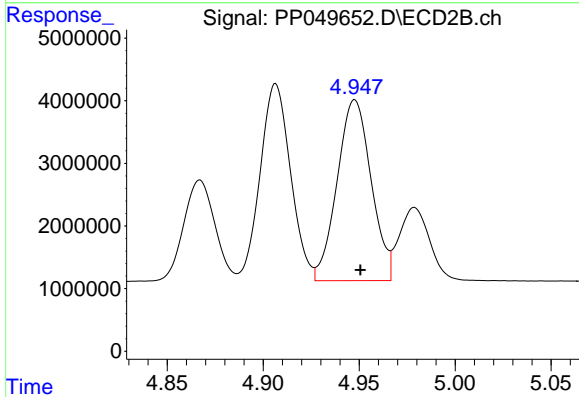
R.T.: 4.907 min
 Delta R.T.: -0.003 min
 Response: 34803229
 Conc: 467.61 ng/ml



#23 AR-1248-3

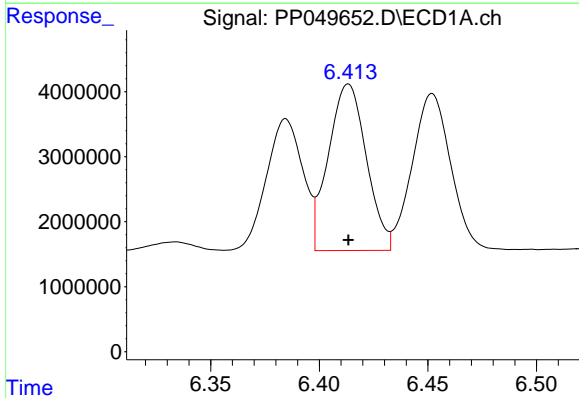
R.T.: 6.007 min
 Delta R.T.: 0.000 min
 Response: 26789847
 Conc: 483.72 ng/ml

Instrument :
 ECD_P
 ClientSampleId :



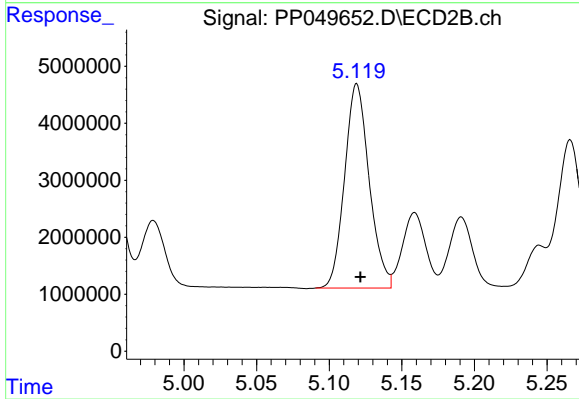
#23 AR-1248-3

R.T.: 4.948 min
 Delta R.T.: -0.003 min
 Response: 35718156
 Conc: 467.78 ng/ml



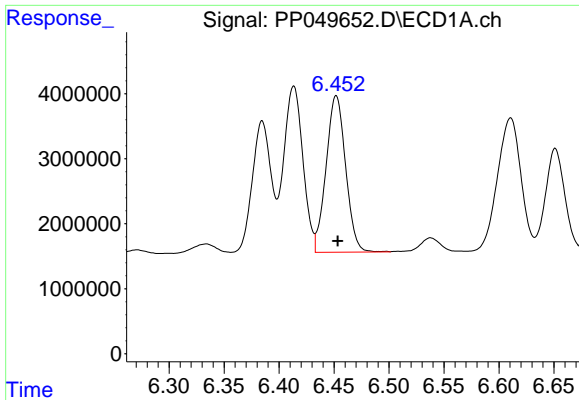
#24 AR-1248-4

R.T.: 6.413 min
 Delta R.T.: 0.000 min
 Response: 31179093
 Conc: 502.99 ng/ml



#24 AR-1248-4

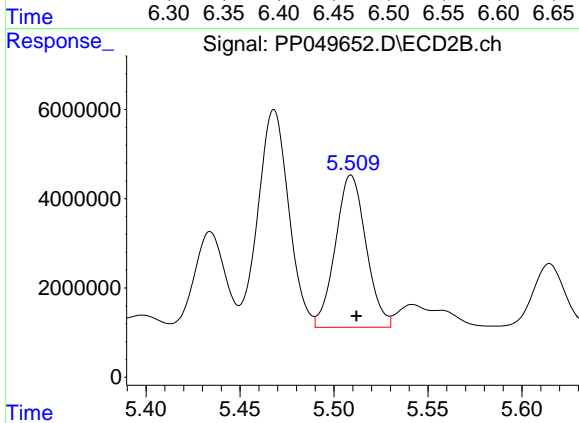
R.T.: 5.119 min
 Delta R.T.: -0.003 min
 Response: 42243232
 Conc: 465.23 ng/ml



#25 AR-1248-5

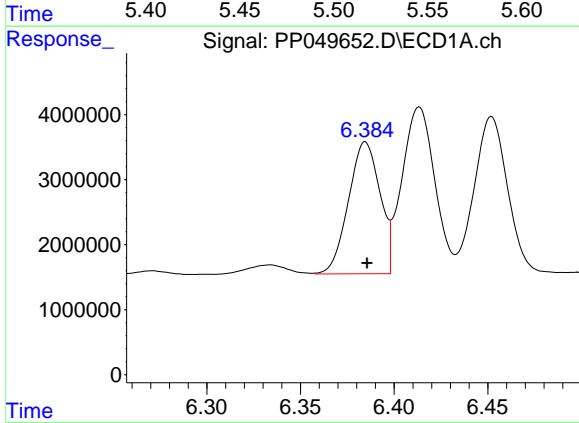
R.T.: 6.452 min
 Delta R.T.: -0.001 min
 Response: 29801536
 Conc: 506.23 ng/ml

Instrument :
 ECD_P
 ClientSampleId :



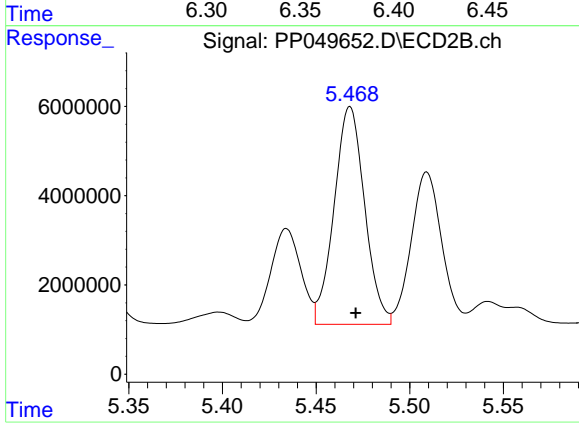
#25 AR-1248-5

R.T.: 5.509 min
 Delta R.T.: -0.003 min
 Response: 38686182
 Conc: 464.17 ng/ml



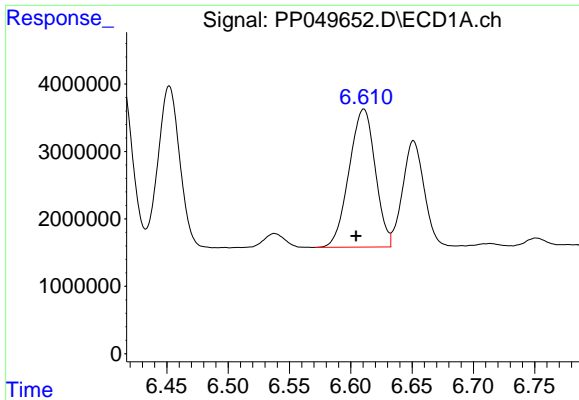
#26 AR-1254-1

R.T.: 6.385 min
 Delta R.T.: 0.000 min
 Response: 23720983
 Conc: 376.64 ng/ml



#26 AR-1254-1

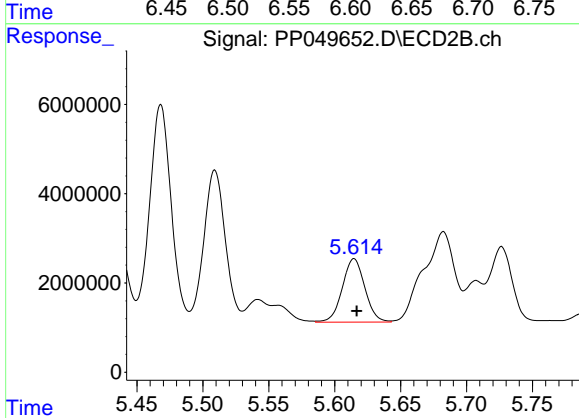
R.T.: 5.468 min
 Delta R.T.: -0.003 min
 Response: 55324100
 Conc: 436.20 ng/ml



#27 AR-1254-2

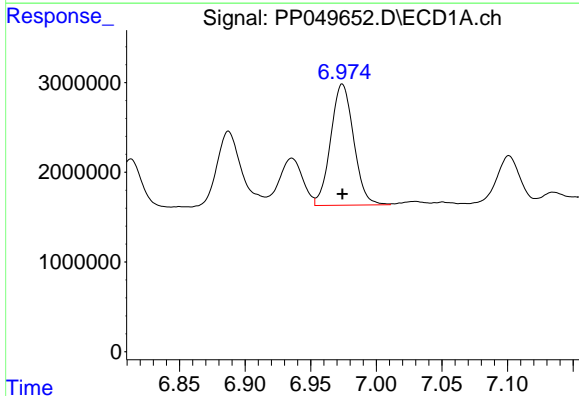
R.T.: 6.610 min
 Delta R.T.: 0.006 min
 Response: 30391767
 Conc: 311.96 ng/ml

Instrument :
 ECD_P
 ClientSampleId :



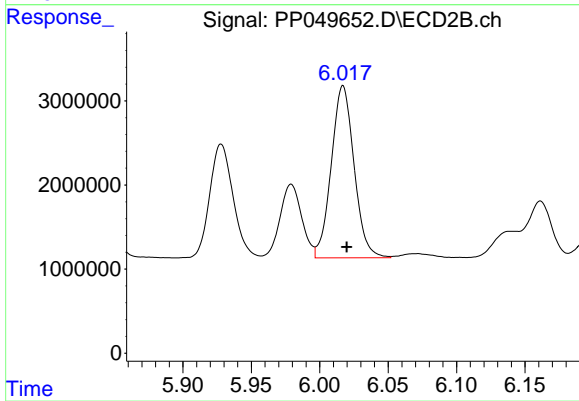
#27 AR-1254-2

R.T.: 5.615 min
 Delta R.T.: -0.002 min
 Response: 16925153
 Conc: 153.13 ng/ml



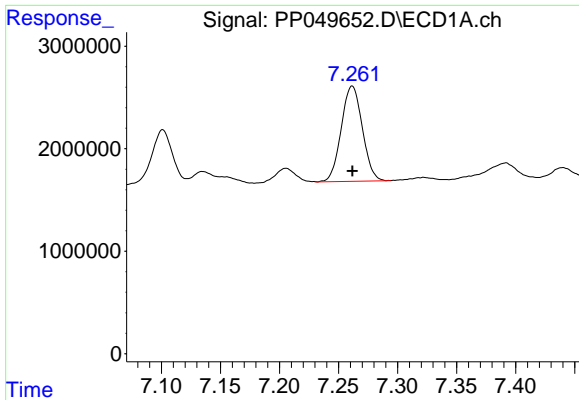
#28 AR-1254-3

R.T.: 6.974 min
 Delta R.T.: 0.000 min
 Response: 16453540
 Conc: 159.24 ng/ml



#28 AR-1254-3

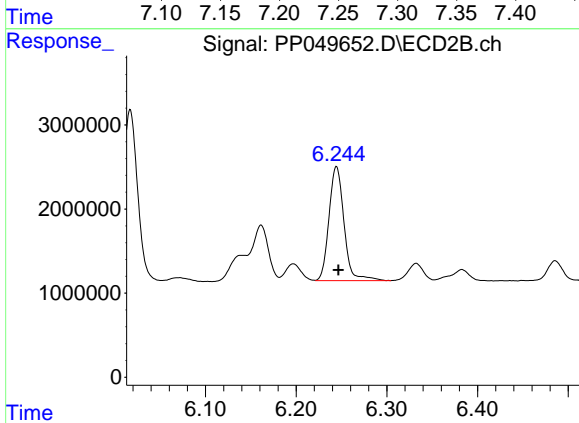
R.T.: 6.017 min
 Delta R.T.: -0.003 min
 Response: 23736100
 Conc: 145.82 ng/ml



#29 AR-1254-4

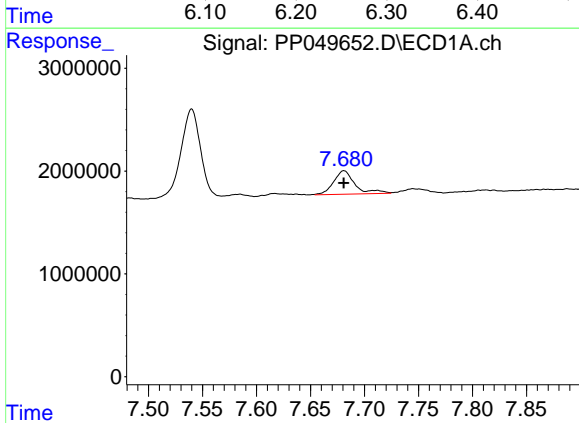
R.T.: 7.262 min
 Delta R.T.: 0.000 min
 Response: 1159998
 Conc: 144.90 ng/ml

Instrument :
 ECD_P
 ClientSampleId :



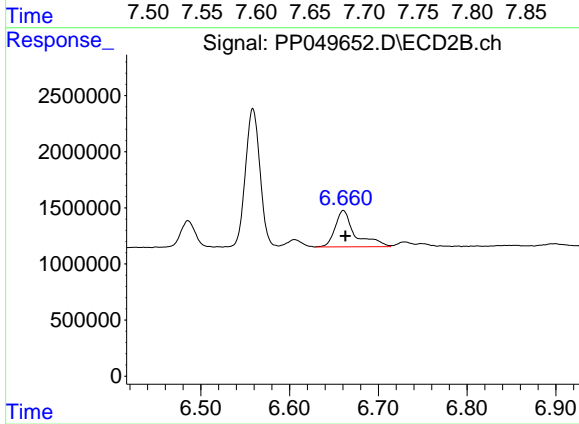
#29 AR-1254-4

R.T.: 6.244 min
 Delta R.T.: -0.002 min
 Response: 15626906
 Conc: 161.51 ng/ml



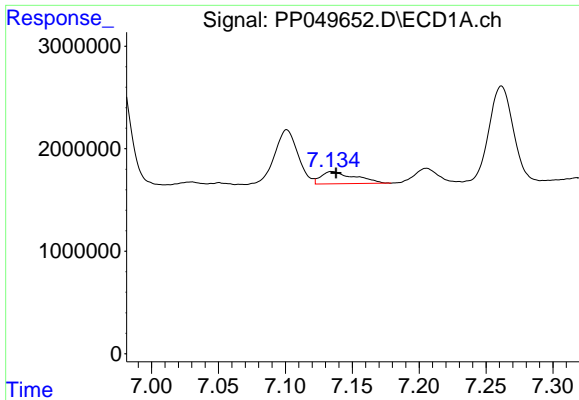
#30 AR-1254-5

R.T.: 7.681 min
 Delta R.T.: 0.000 min
 Response: 3147076
 Conc: 35.41 ng/ml



#30 AR-1254-5

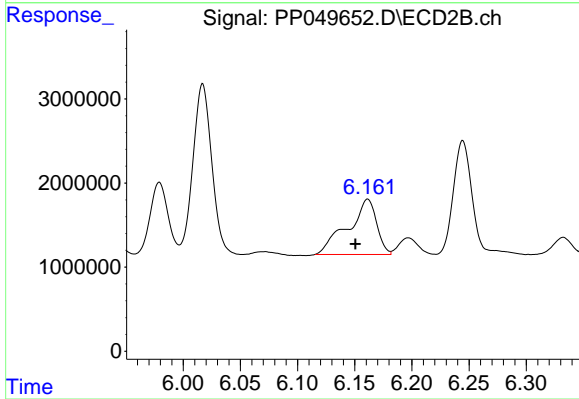
R.T.: 6.661 min
 Delta R.T.: -0.002 min
 Response: 5067547
 Conc: 38.24 ng/ml



#31 AR-1260-1

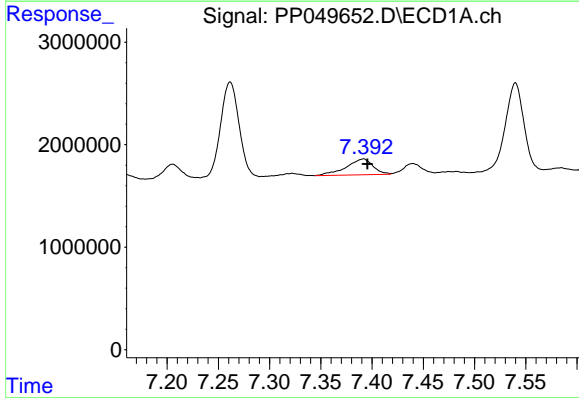
R.T.: 7.135 min
 Delta R.T.: -0.002 min
 Response: 2061769
 Conc: 27.27 ng/ml

Instrument :
 ECD_P
 ClientSampleId :



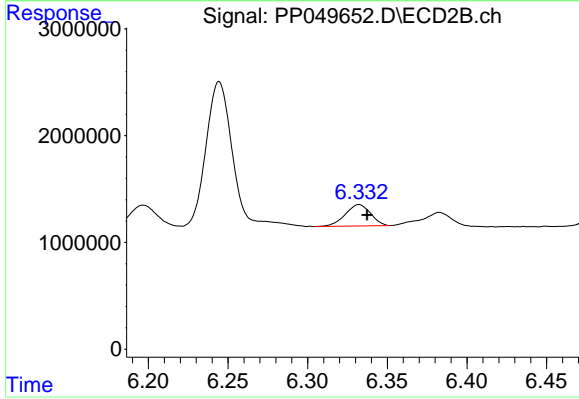
#31 AR-1260-1

R.T.: 6.161 min
 Delta R.T.: 0.011 min
 Response: 1154512
 Conc: 110.25 ng/ml



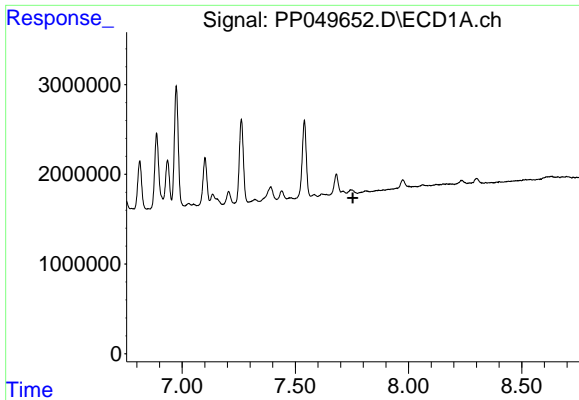
#32 AR-1260-2

R.T.: 7.391 min
 Delta R.T.: -0.005 min
 Response: 2809499
 Conc: 29.68 ng/ml



#32 AR-1260-2

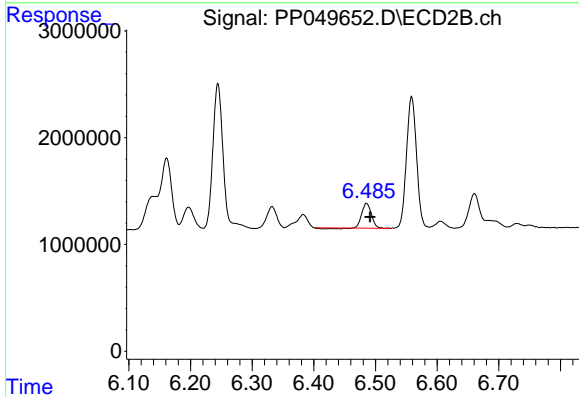
R.T.: 6.332 min
 Delta R.T.: -0.005 min
 Response: 2220864
 Conc: 18.46 ng/ml



#33 AR-1260-3

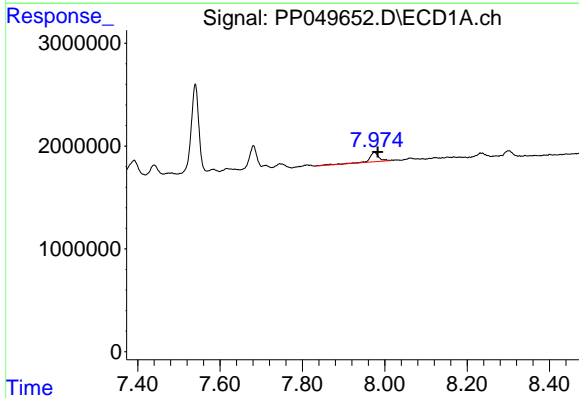
R.T.: 0.000 min
 Exp R.T.: 7.754 min
 Response: 0
 Conc: N.D.

Instrument :
 ECD_P
 ClientSampleId :



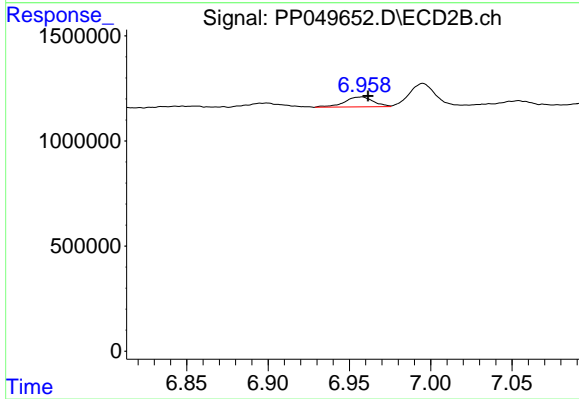
#33 AR-1260-3

R.T.: 6.486 min
 Delta R.T.: -0.006 min
 Response: 2374936
 Conc: 20.99 ng/ml



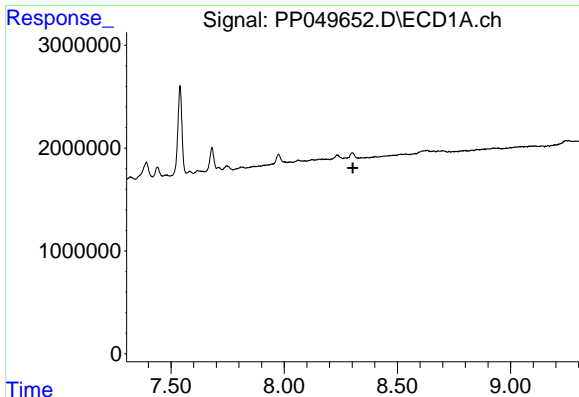
#34 AR-1260-4

R.T.: 7.975 min
 Delta R.T.: -0.008 min
 Response: 1454328
 Conc: 18.80 ng/ml



#34 AR-1260-4

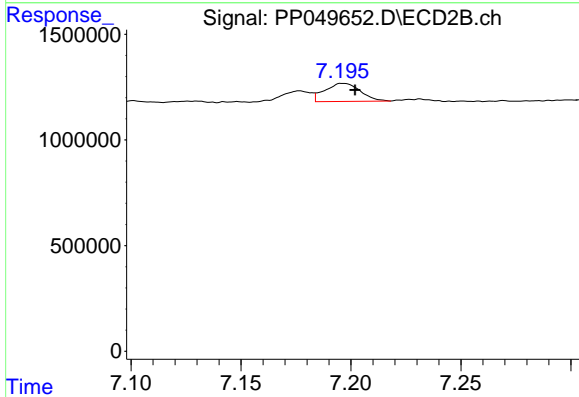
R.T.: 6.957 min
 Delta R.T.: -0.004 min
 Response: 582972
 Conc: 7.62 ng/ml



#35 AR-1260-5

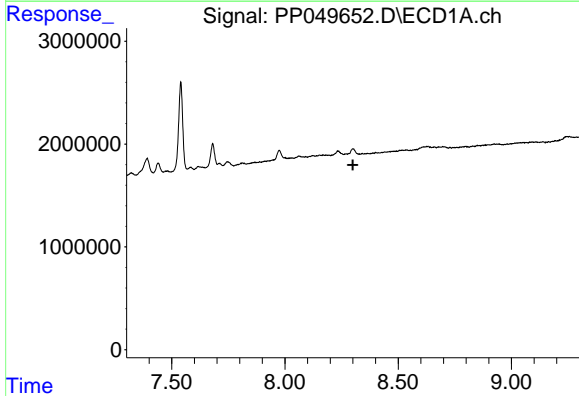
R.T.: 0.000 min
 Exp R.T. : 8.303 min
 Response: 0
 Conc: N.D.

Instrument :
 ECD_P
 ClientSampleId :



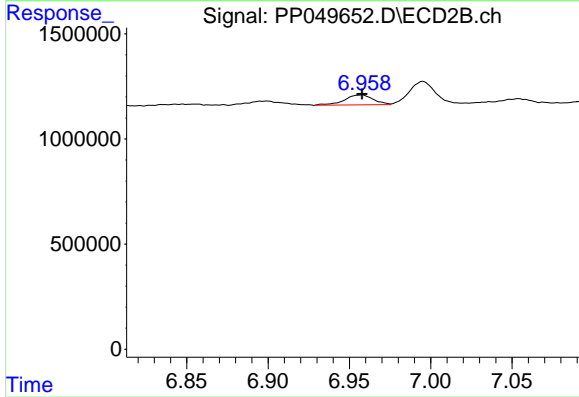
#35 AR-1260-5

R.T.: 7.197 min
 Delta R.T.: -0.005 min
 Response: 960350
 Conc: 5.62 ng/ml



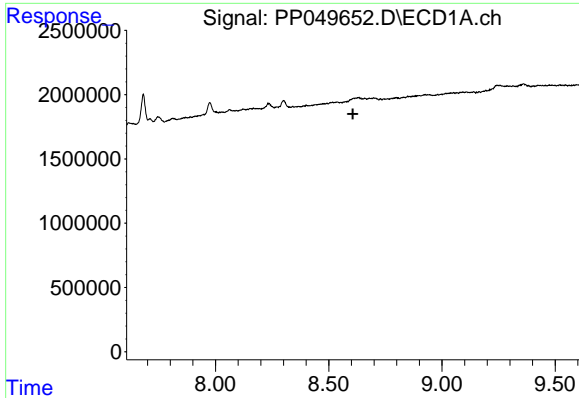
#37 AR-1262-2

R.T.: 0.000 min
 Exp R.T. : 8.300 min
 Response: 0
 Conc: N.D.



#37 AR-1262-2

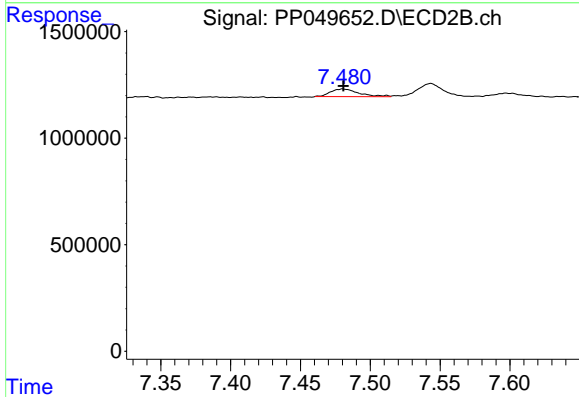
R.T.: 6.957 min
 Delta R.T.: 0.000 min
 Response: 582972
 Conc: 5.77 ng/ml



#38 AR-1262-3

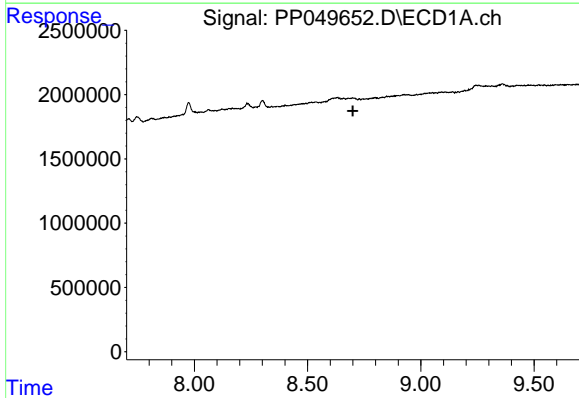
R.T.: 0.000 min
 Exp R.T.: 8.606 min
 Response: 0
 Conc: N.D.

Instrument :
 ECD_P
 ClientSampleId :



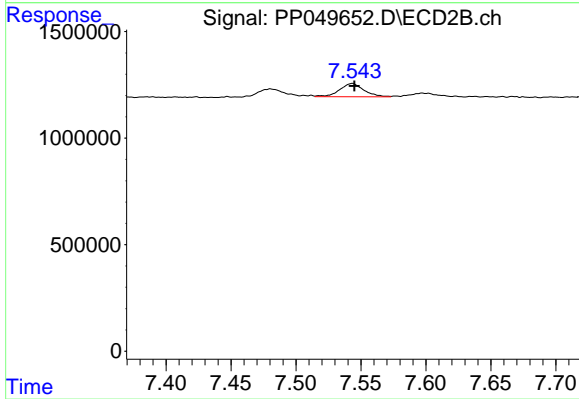
#38 AR-1262-3

R.T.: 7.480 min
 Delta R.T.: 0.000 min
 Response: 512475
 Conc: 7.92 ng/ml



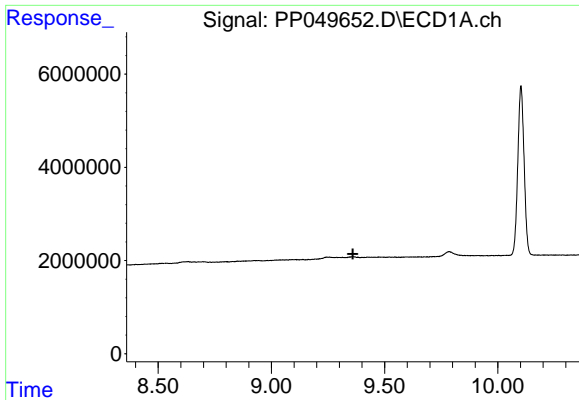
#39 AR-1262-4

R.T.: 0.000 min
 Exp R.T.: 8.700 min
 Response: 0
 Conc: N.D.



#39 AR-1262-4

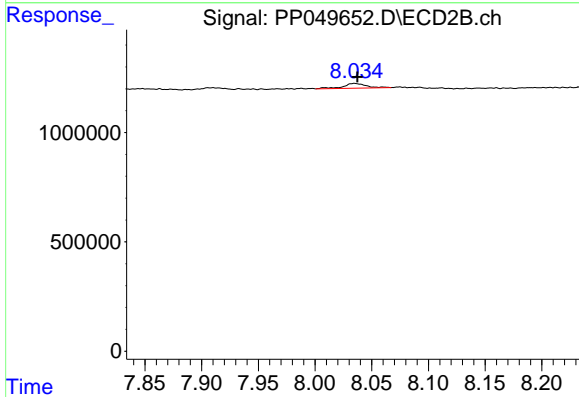
R.T.: 7.543 min
 Delta R.T.: -0.002 min
 Response: 814239
 Conc: 6.36 ng/ml



#40 AR-1262-5

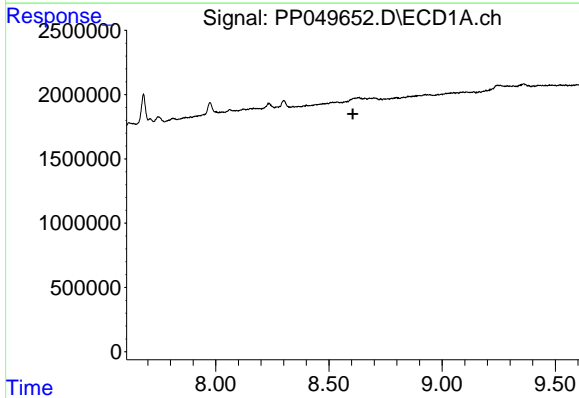
R.T.: 0.000 min
 Exp R.T.: 9.360 min
 Response: 0
 Conc: N.D.

Instrument :
 ECD_P
 ClientSampleId :



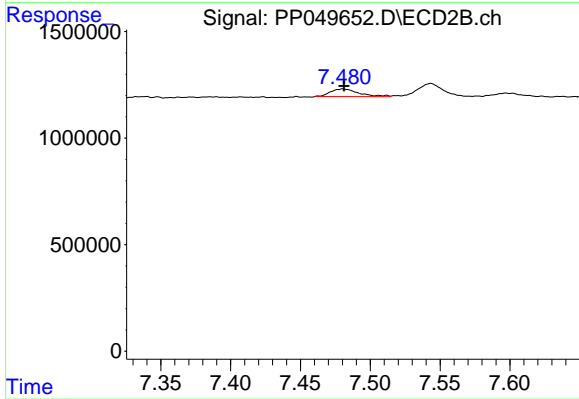
#40 AR-1262-5

R.T.: 8.035 min
 Delta R.T.: -0.003 min
 Response: 301772
 Conc: 5.50 ng/ml



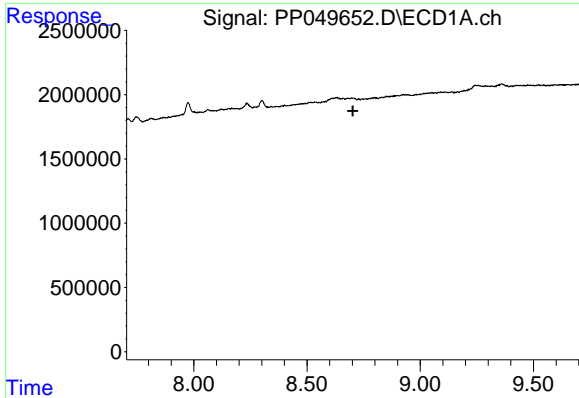
#41 AR-1268-1

R.T.: 0.000 min
 Exp R.T.: 8.606 min
 Response: 0
 Conc: N.D.



#41 AR-1268-1

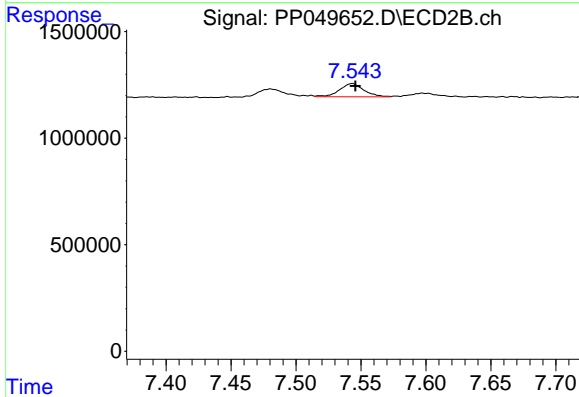
R.T.: 7.480 min
 Delta R.T.: 0.000 min
 Response: 512475
 Conc: 2.79 ng/ml



#42 AR-1268-2

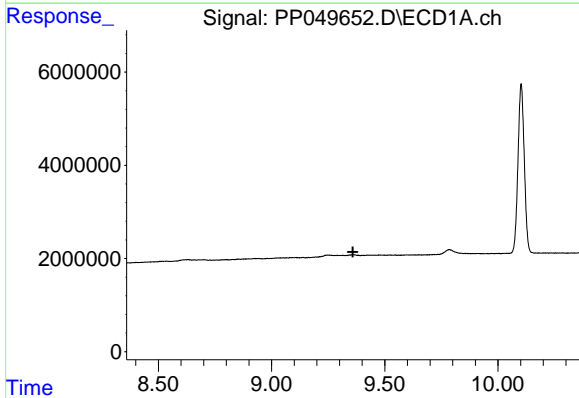
R.T.: 0.000 min
 Exp R.T.: 8.702 min
 Response: 0
 Conc: N.D.

Instrument :
 ECD_P
 ClientSampleId :



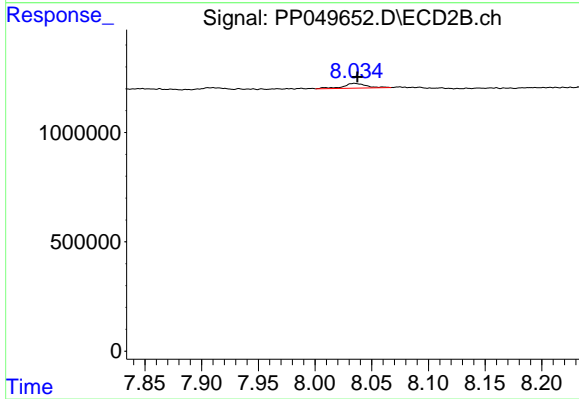
#42 AR-1268-2

R.T.: 7.543 min
 Delta R.T.: -0.002 min
 Response: 814239
 Conc: 4.71 ng/ml



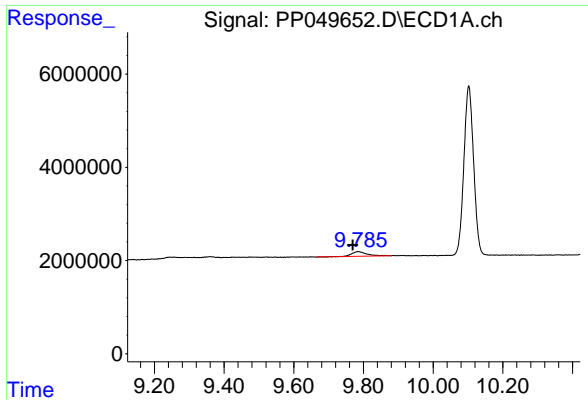
#44 AR-1268-4

R.T.: 0.000 min
 Exp R.T.: 9.359 min
 Response: 0
 Conc: N.D.



#44 AR-1268-4

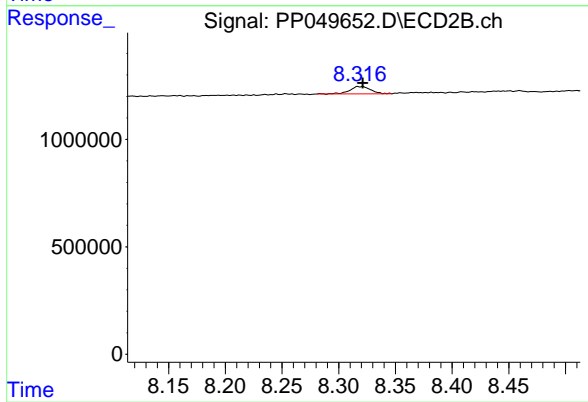
R.T.: 8.035 min
 Delta R.T.: -0.003 min
 Response: 301772
 Conc: 4.99 ng/ml



#45 AR-1268-5

R.T.: 9.785 min
Delta R.T.: 0.016 min
Response: 3025608
Conc: 5.88 ng/ml

Instrument :
ECD_P
ClientSampleId :



#45 AR-1268-5

R.T.: 8.317 min
Delta R.T.: -0.004 min
Response: 440336
Conc: 1.08 ng/ml