

Data Path : Z:\pestpcbsrv\HPCHEM1\ECD\_P\Data\PP072023\  
 Data File : PP058814.D  
 Signal(s) : Signal #1: ECD1A.ch Signal #2: ECD2B.ch  
 Acq On : 20 Jul 2023 17:28  
 Operator : YP\AJ  
 Sample : 03666-02  
 Misc :  
 ALS Vial : 33 Sample Multiplier: 1

**Instrument :**  
 ECD\_P  
**ClientSampleId :**  
 P001-04B

**Manual Integrations**  
**APPROVED**  
 Reviewed By :Yogesh Patel 07/21/2023  
 Supervised By :Ankita Jodhani 07/21/2023

Integration File signal 1: autoint1.e  
 Integration File signal 2: autoint2.e  
 Quant Time: Jul 21 07:15:31 2023  
 Quant Method : Z:\pestpcbsrv\HPCHEM1\ECD\_P\methods\PP071923.M  
 Quant Title : GC EXTRACTABLES  
 QLast Update : Thu Jul 20 03:59:18 2023  
 Response via : Initial Calibration  
 Integrator: ChemStation

Volume Inj. : 2 µl  
 Signal #1 Phase : ZB-MR1 Signal #2 Phase: ZB-MR2  
 Signal #1 Info : 30Mx0.32mmx 0.50µ Signal #2 Info : 30M x 0.32mm x 0.25µm

Compound	RT#1	RT#2	Resp#1	Resp#2	ng/ml	ng/ml
-----						
System Monitoring Compounds						
1) SA Tetrachlo...	4.426	3.666	26128605	35353006	17.882	16.544m
2) SA Decachlor...	10.225	8.717	9019433	27358332	10.099m	15.060 #
Target Compounds						
26) L6 AR-1254-1	6.462	5.571	11527763	24484921	236.865	223.824
27) L6 AR-1254-2	6.683	5.720	34744916	21533258	485.977	225.440 #
28) L6 AR-1254-3	7.049	6.126	25583414	46305961	346.928	307.528
29) L6 AR-1254-4	7.336	6.355	16264698	25811200	332.287	312.579
30) L6 AR-1254-5	7.756	6.775	19429961	37325868	358.885	291.403
-----						

(f)=RT Delta > 1/2 Window (#)=Amounts differ by > 25% (m)=manual int.

Data Path : Z:\pestpcbsrv\HPCHEM1\ECD\_P\Data\PP072023\  
 Data File : PP058814.D  
 Signal(s) : Signal #1: ECD1A.ch Signal #2: ECD2B.ch  
 Acq On : 20 Jul 2023 17:28  
 Operator : YP\AJ  
 Sample : 03666-02  
 Misc :  
 ALS Vial : 33 Sample Multiplier: 1

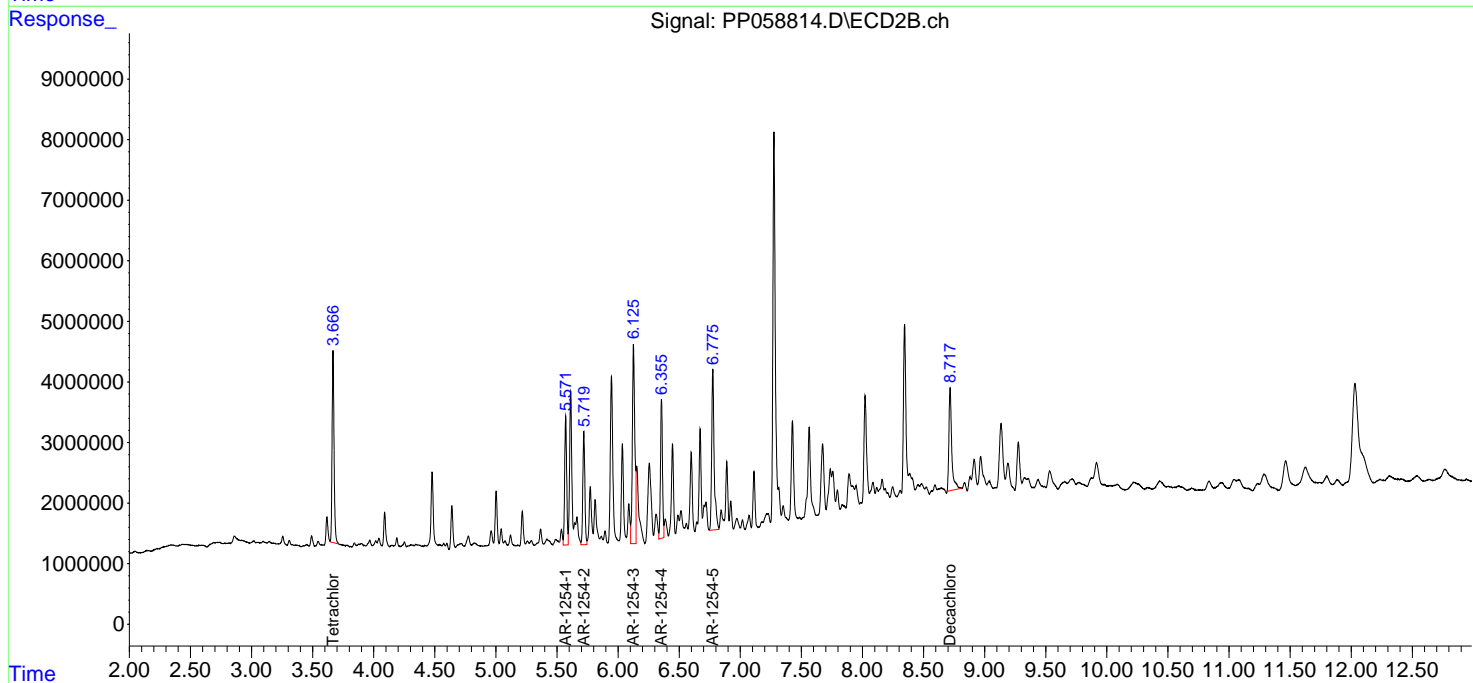
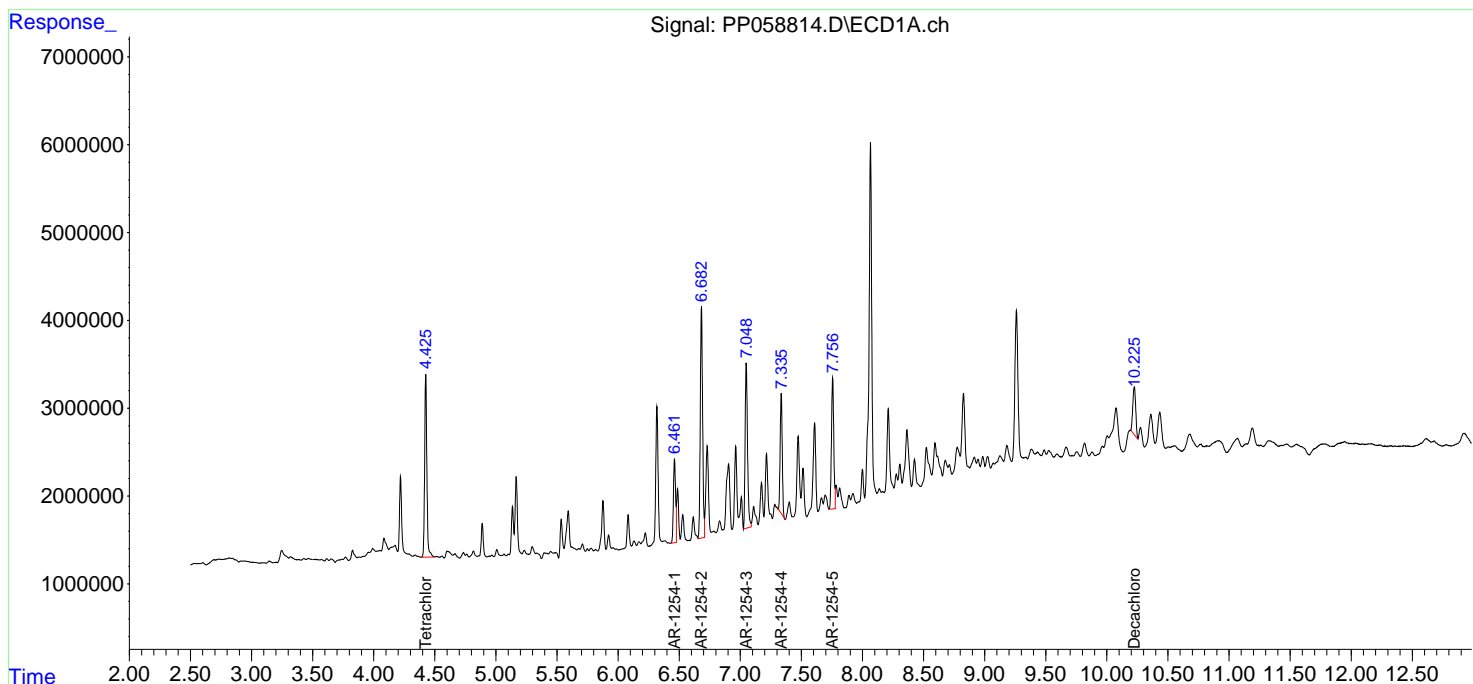
**Instrument :**  
 ECD\_P  
**ClientSampleId :**  
 P001-04B

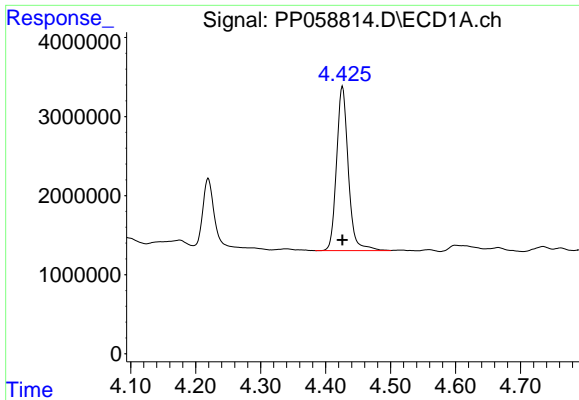
**Manual Integrations**  
**APPROVED**

Reviewed By :Yogesh Patel 07/21/2023  
 Supervised By :Ankita Jodhani 07/21/2023

Integration File signal 1: autoint1.e  
 Integration File signal 2: autoint2.e  
 Quant Time: Jul 21 07:15:31 2023  
 Quant Method : Z:\pestpcbsrv\HPCHEM1\ECD\_P\methods\PP071923.M  
 Quant Title : GC EXTRACTABLES  
 QLast Update : Thu Jul 20 03:59:18 2023  
 Response via : Initial Calibration  
 Integrator: ChemStation

Volume Inj. : 2 µl  
 Signal #1 Phase : ZB-MR1 Signal #2 Phase: ZB-MR2  
 Signal #1 Info : 30Mx0.32mmx 0.50µ Signal #2 Info : 30M x 0.32mm x 0.25µm

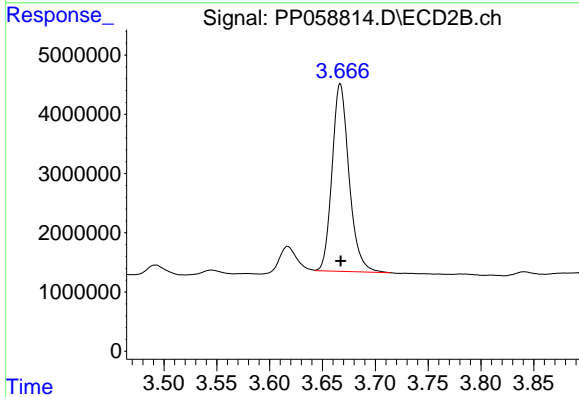




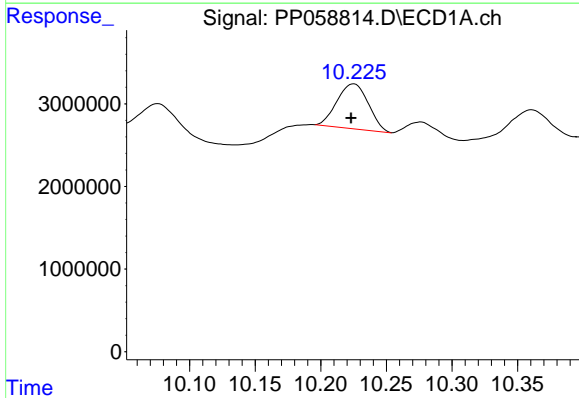
#1 Tetrachloro-m-xylene  
 R.T.: 4.426 min  
 Delta R.T.: 0.000 min  
 Response: 26128605  
 Conc: 17.88 ng/ml

Instrument : ECD\_P  
 ClientSampleId : P001-04B

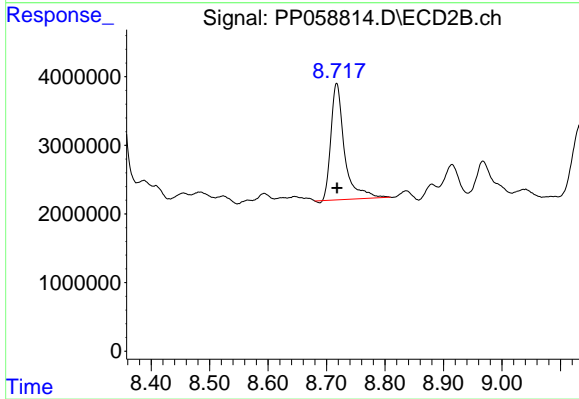
**Manual Integrations**  
**APPROVED**  
 Reviewed By :Yogesh Patel 07/21/2023  
 Supervised By :Ankita Jodhani 07/21/2023



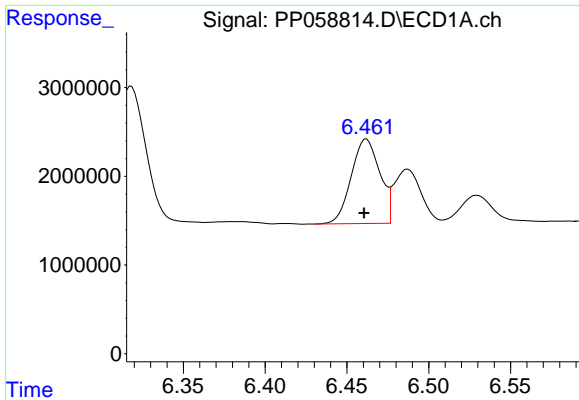
#1 Tetrachloro-m-xylene  
 R.T.: 3.666 min  
 Delta R.T.: 0.000 min  
 Response: 35353006  
 Conc: 16.54 ng/ml m



#2 Decachlorobiphenyl  
 R.T.: 10.225 min  
 Delta R.T.: 0.002 min  
 Response: 9019433  
 Conc: 10.10 ng/ml m



#2 Decachlorobiphenyl  
 R.T.: 8.717 min  
 Delta R.T.: 0.000 min  
 Response: 27358332  
 Conc: 15.06 ng/ml



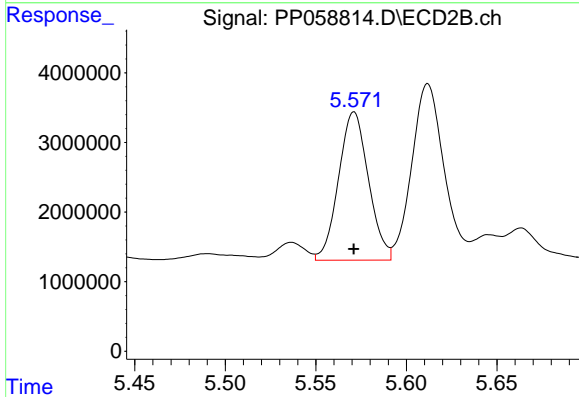
#26 AR-1254-1

R.T.: 6.462 min  
 Delta R.T.: 0.002 min  
 Response: 11527763  
 Conc: 236.86 ng/ml

Instrument :  
 ECD\_P  
 ClientSampleId :  
 P001-04B

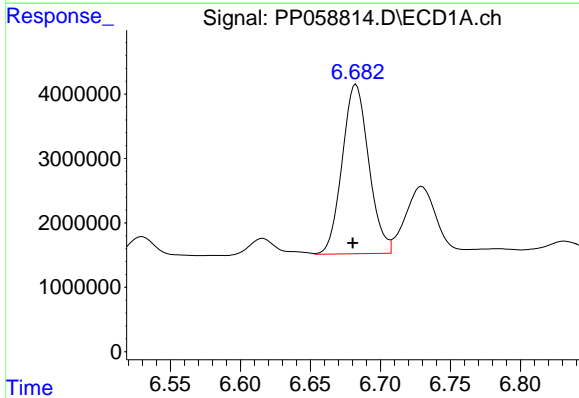
Manual Integrations  
 APPROVED

Reviewed By :Yogesh Patel 07/21/2023  
 Supervised By :Ankita Jodhani 07/21/2023



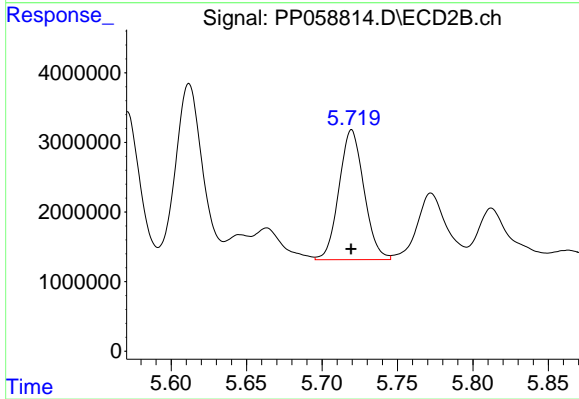
#26 AR-1254-1

R.T.: 5.571 min  
 Delta R.T.: 0.000 min  
 Response: 24484921  
 Conc: 223.82 ng/ml



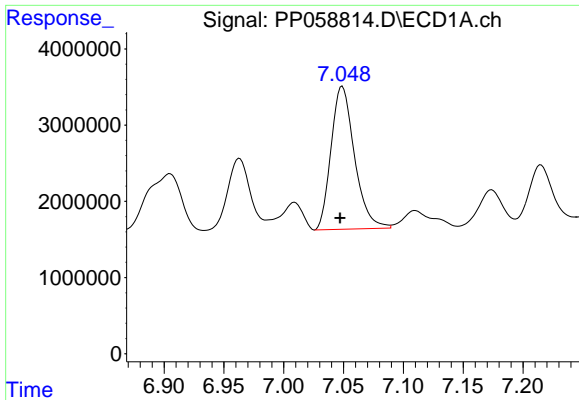
#27 AR-1254-2

R.T.: 6.683 min  
 Delta R.T.: 0.002 min  
 Response: 34744916  
 Conc: 485.98 ng/ml



#27 AR-1254-2

R.T.: 5.720 min  
 Delta R.T.: 0.000 min  
 Response: 21533258  
 Conc: 225.44 ng/ml



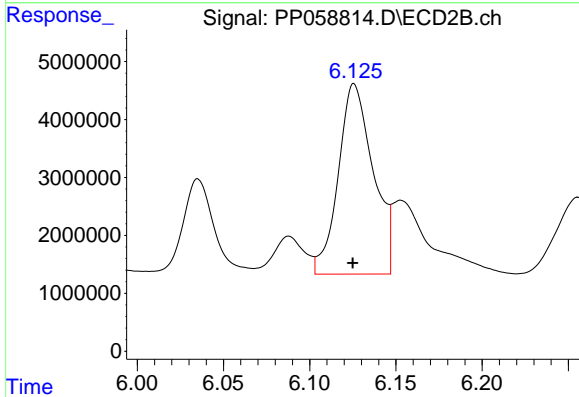
#28 AR-1254-3

R.T.: 7.049 min  
 Delta R.T.: 0.002 min  
 Response: 25583414  
 Conc: 346.93 ng/ml

Instrument :  
 ECD\_P  
 ClientSampleId :  
 P001-04B

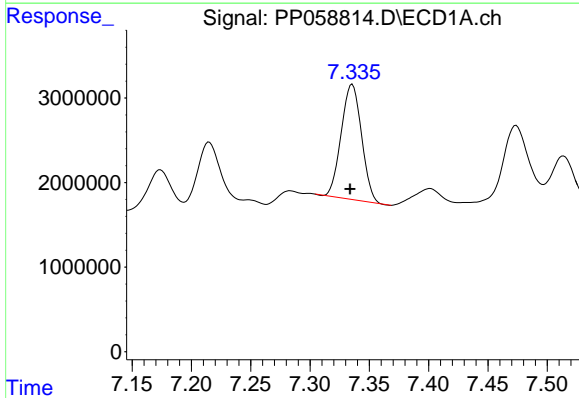
Manual Integrations  
 APPROVED

Reviewed By :Yogesh Patel 07/21/2023  
 Supervised By :Ankita Jodhani 07/21/2023



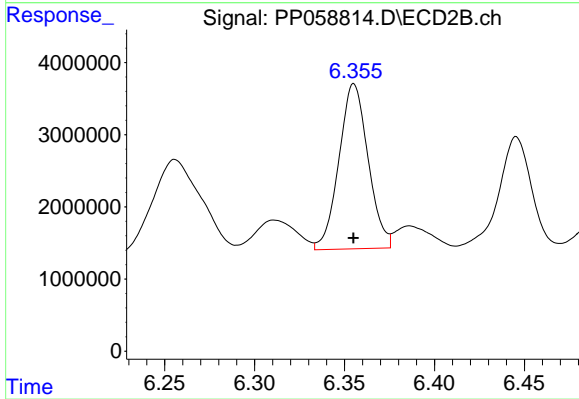
#28 AR-1254-3

R.T.: 6.126 min  
 Delta R.T.: 0.000 min  
 Response: 46305961  
 Conc: 307.53 ng/ml



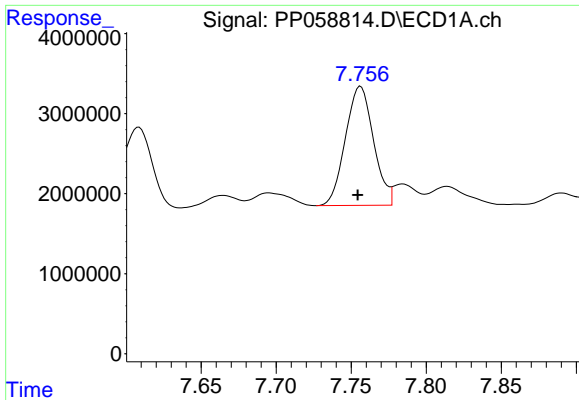
#29 AR-1254-4

R.T.: 7.336 min  
 Delta R.T.: 0.002 min  
 Response: 16264698  
 Conc: 332.29 ng/ml



#29 AR-1254-4

R.T.: 6.355 min  
 Delta R.T.: 0.000 min  
 Response: 25811200  
 Conc: 312.58 ng/ml



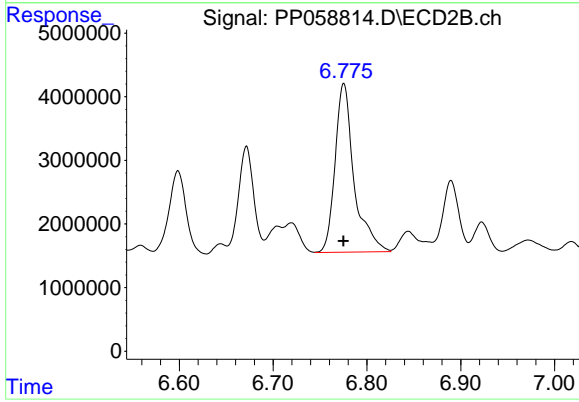
#30 AR-1254-5

R.T.: 7.756 min  
 Delta R.T.: 0.002 min  
 Response: 19429961  
 Conc: 358.89 ng/ml

Instrument :  
 ECD\_P  
 ClientSampleId :  
 P001-04B

Manual Integrations  
 APPROVED

Reviewed By :Yogesh Patel 07/21/2023  
 Supervised By :Ankita Jodhani 07/21/2023



#30 AR-1254-5

R.T.: 6.775 min  
 Delta R.T.: 0.000 min  
 Response: 37325868  
 Conc: 291.40 ng/ml