

Data Path : Z:\pestpcbsrv\HPCHEM1\ECD_P\Data\PP072121\
 Data File : PP037494.D
 Signal(s) : Signal #1: ECD1A.CH Signal #2: ECD2B.CH
 Acq On : 21 Jul 2021 18:15
 Operator : DD\AJ
 Sample : M3059-04
 Misc :
 ALS Vial : 19 Sample Multiplier: 1

Instrument :
 ECD_P
 ClientSampleId :
 02-A-02-B-02-C

Integration File signal 1: autoint1.e
 Integration File signal 2: autoint2.e
 Quant Time: Jul 22 00:33:36 2021
 Quant Method : Z:\pestpcbsrv\HPCHEM1\ECD_P\methods\PP070621.M
 Quant Title : GC EXTRACTABLES
 QLast Update : Wed Jul 07 08:32:32 2021
 Response via : Initial Calibration
 Integrator: ChemStation 6890 Scale Mode: Small noise peaks clipped

Volume Inj. : 2 µl
 Signal #1 Phase : ZB-MR1 Signal #2 Phase: ZB-MR2
 Signal #1 Info : 30Mx0.32mmx 0.50µ Signal #2 Info : 30M x 0.32mm x 0.25µm

Compound	RT#1	RT#2	Resp#1	Resp#2	ng/ml	ng/ml

System Monitoring Compounds						
1) SA Tetrachlo...	4.958	3.948	910801	534006	20.040	19.515
2) SA Decachlor...	10.989	9.241	736972	459280	16.009	16.500
Target Compounds						
31) L7 AR-1260-1	7.966	6.786	265870	170303	120.771	123.246
32) L7 AR-1260-2	8.232	6.985	354735	161997	127.521	96.431
33) L7 AR-1260-3	8.597	7.138	230112	170091	113.850	99.271
34) L7 AR-1260-4	8.828	7.623	412377	180175	167.646	132.527
35) L7 AR-1260-5	9.157	7.871	485492	170912	105.212	52.989 #

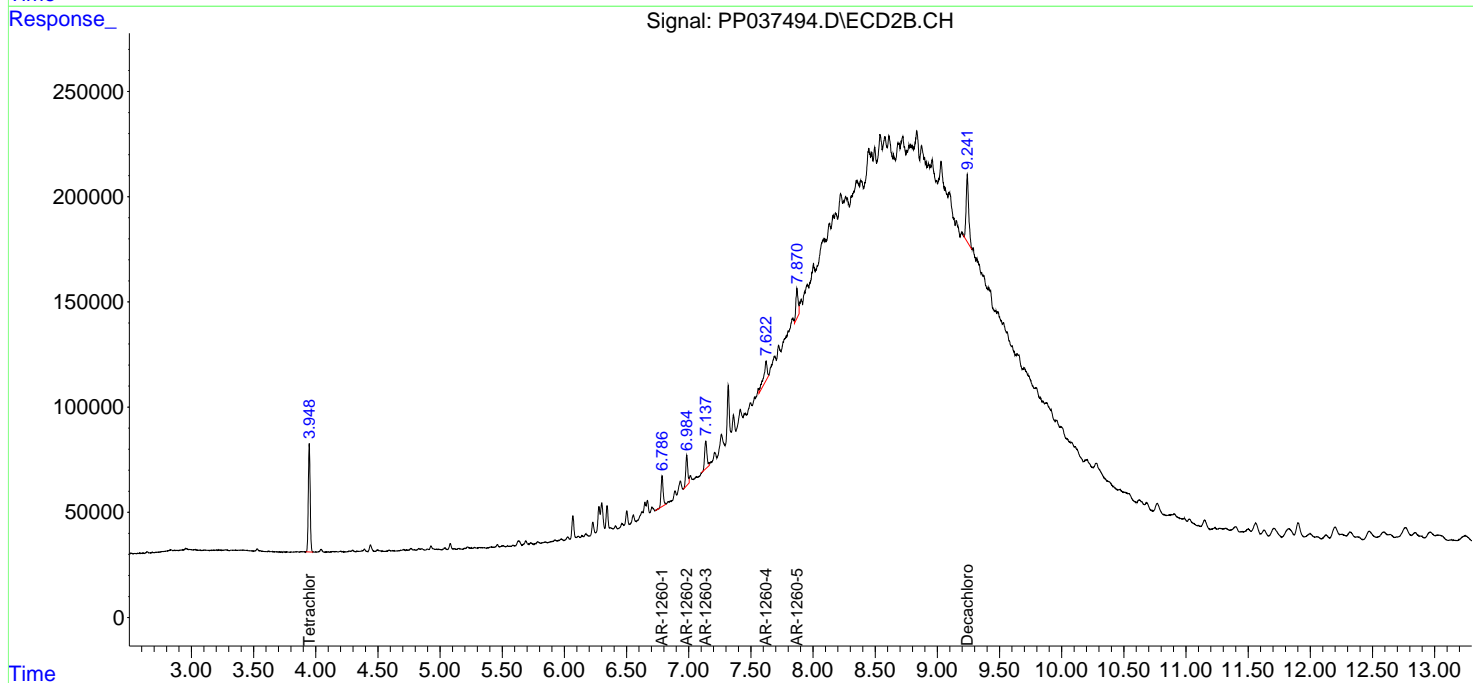
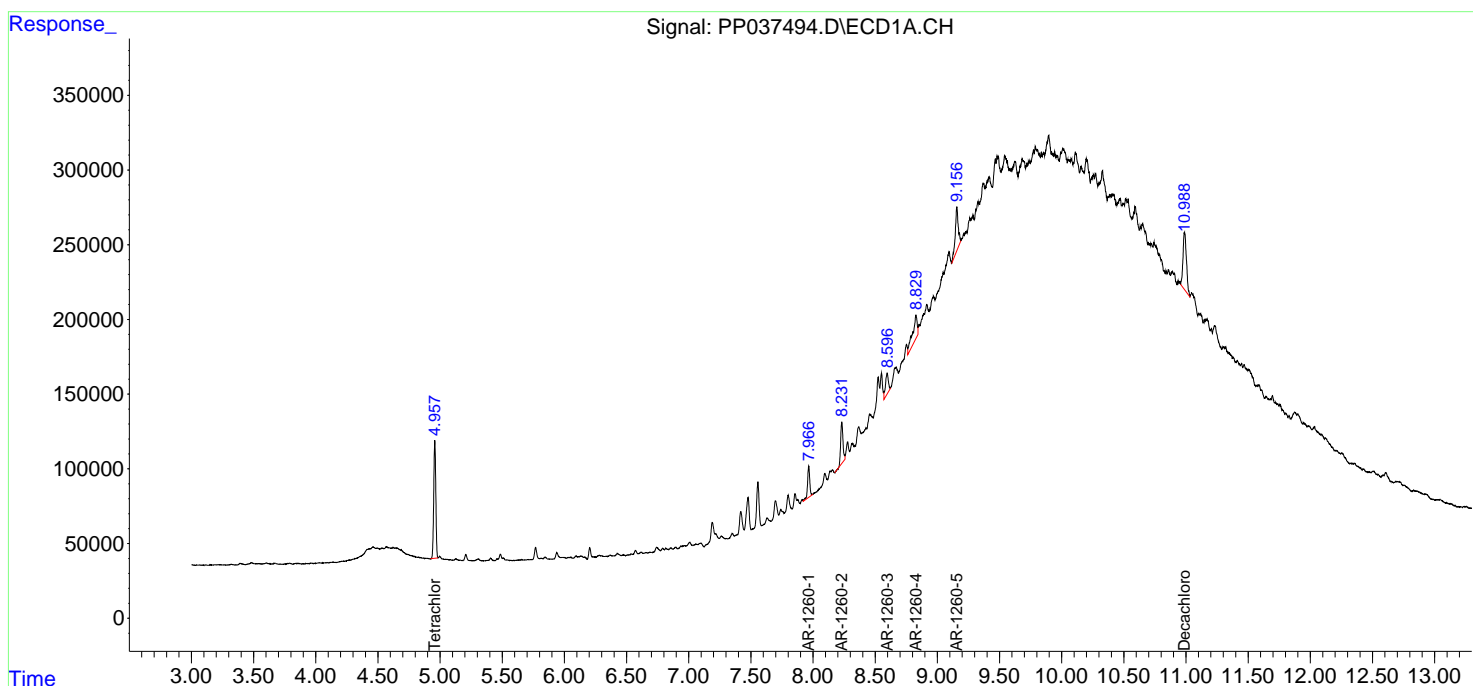
(f)=RT Delta > 1/2 Window (#)=Amounts differ by > 25% (m)=manual int.

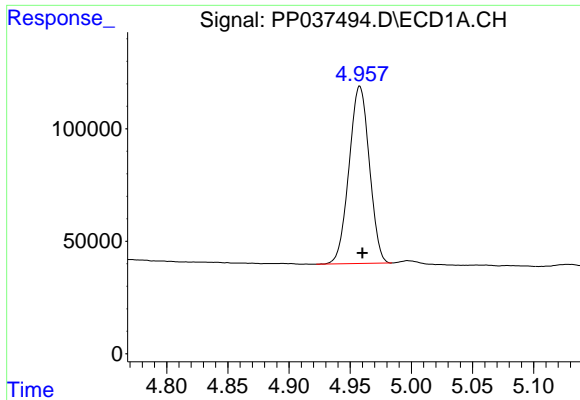
Data Path : Z:\pestpcbsrv\HPCHEM1\ECD_P\Data\PP072121\
 Data File : PP037494.D
 Signal(s) : Signal #1: ECD1A.CH Signal #2: ECD2B.CH
 Acq On : 21 Jul 2021 18:15
 Operator : DD\AJ
 Sample : M3059-04
 Misc :
 ALS Vial : 19 Sample Multiplier: 1

Instrument :
 ECD_P
 ClientSampled :
 02-A-02-B-02-C

Integration File signal 1: autoint1.e
 Integration File signal 2: autoint2.e
 Quant Time: Jul 22 00:33:36 2021
 Quant Method : Z:\pestpcbsrv\HPCHEM1\ECD_P\methods\PP070621.M
 Quant Title : GC EXTRACTABLES
 QLast Update : Wed Jul 07 08:32:32 2021
 Response via : Initial Calibration
 Integrator: ChemStation 6890 Scale Mode: Small noise peaks clipped

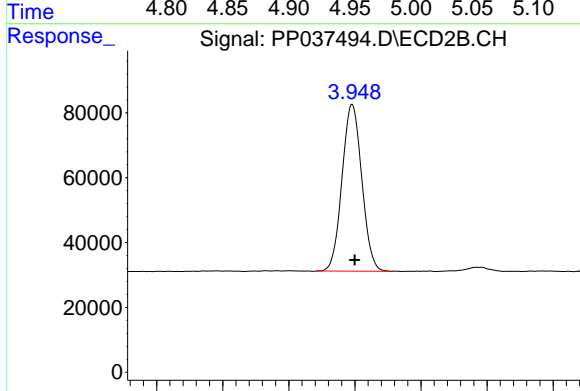
Volume Inj. : 2 µl
 Signal #1 Phase : ZB-MR1 Signal #2 Phase: ZB-MR2
 Signal #1 Info : 30Mx0.32mmx 0.50µ Signal #2 Info : 30M x 0.32mm x 0.25µm



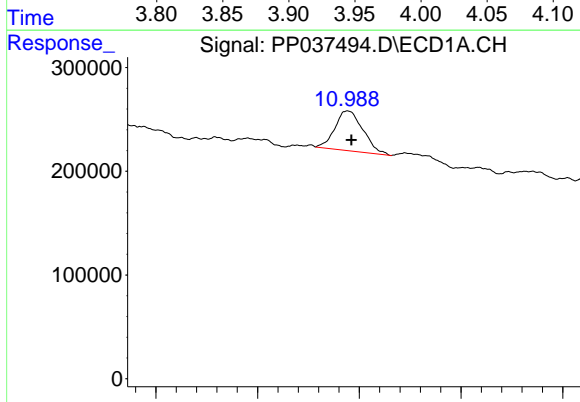


#1 Tetrachloro-m-xylene
 R.T.: 4.958 min
 Delta R.T.: -0.002 min
 Response: 910801
 Conc: 20.04 ng/ml

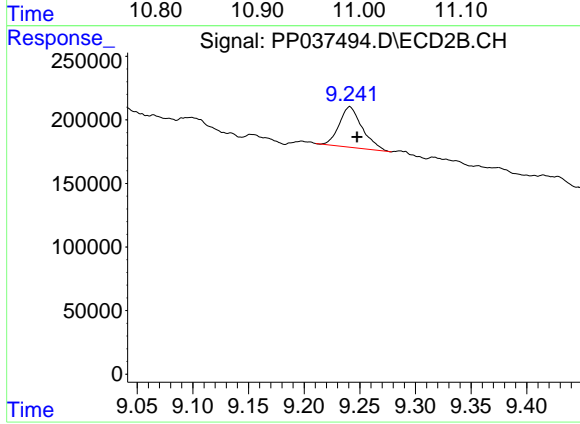
Instrument :
 ECD_P
 ClientSampleId :
 02-A-02-B-02-C



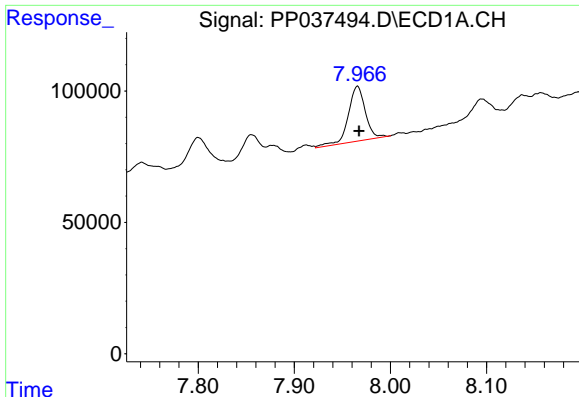
#1 Tetrachloro-m-xylene
 R.T.: 3.948 min
 Delta R.T.: -0.002 min
 Response: 534006
 Conc: 19.51 ng/ml



#2 Decachlorobiphenyl
 R.T.: 10.989 min
 Delta R.T.: -0.004 min
 Response: 736972
 Conc: 16.01 ng/ml



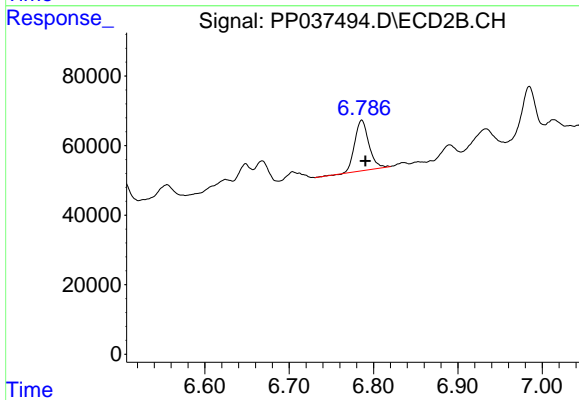
#2 Decachlorobiphenyl
 R.T.: 9.241 min
 Delta R.T.: -0.006 min
 Response: 459280
 Conc: 16.50 ng/ml



#31 AR-1260-1

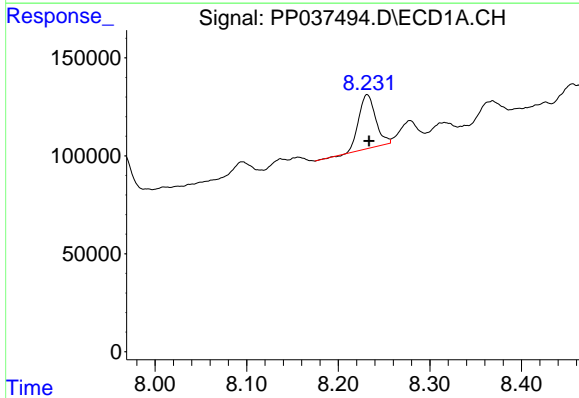
R.T.: 7.966 min
 Delta R.T.: -0.002 min
 Response: 265870
 Conc: 120.77 ng/ml

Instrument :
 ECD_P
 ClientSampleId :
 02-A-02-B-02-C



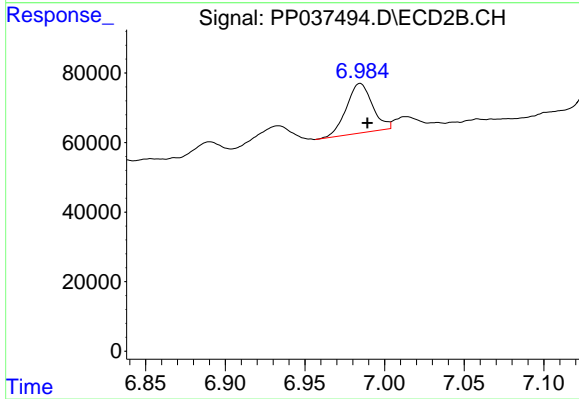
#31 AR-1260-1

R.T.: 6.786 min
 Delta R.T.: -0.004 min
 Response: 170303
 Conc: 123.25 ng/ml



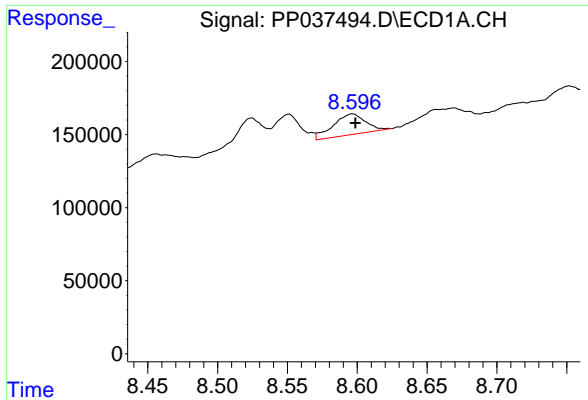
#32 AR-1260-2

R.T.: 8.232 min
 Delta R.T.: -0.002 min
 Response: 354735
 Conc: 127.52 ng/ml



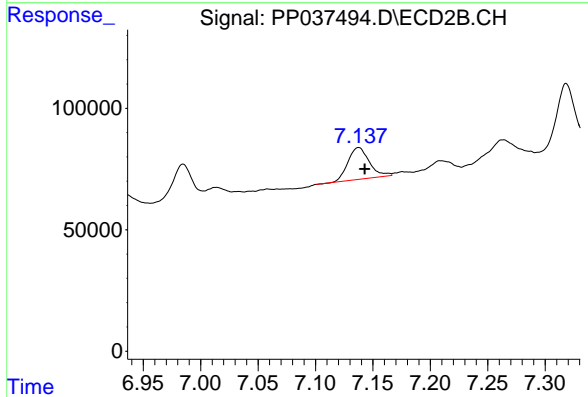
#32 AR-1260-2

R.T.: 6.985 min
 Delta R.T.: -0.004 min
 Response: 161997
 Conc: 96.43 ng/ml

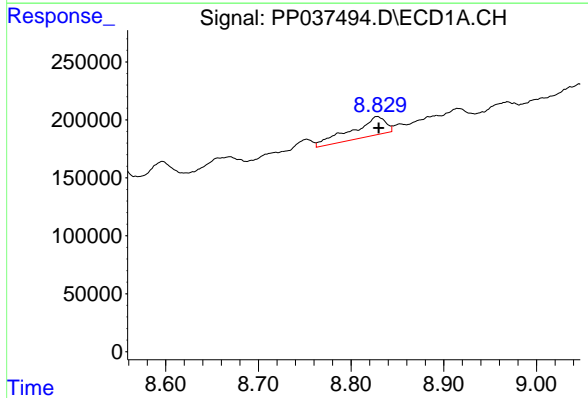


#33 AR-1260-3
 R.T.: 8.597 min
 Delta R.T.: -0.002 min
 Response: 230112
 Conc: 113.85 ng/ml

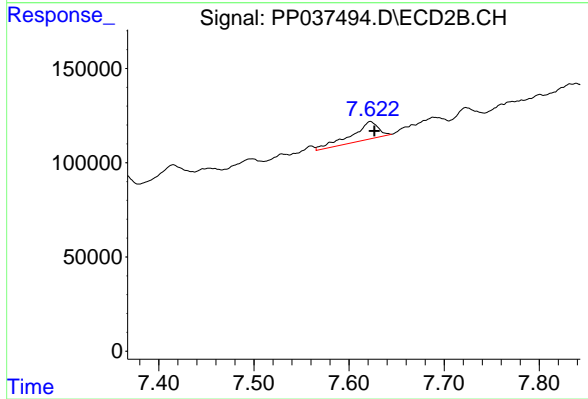
Instrument :
 ECD_P
 ClientSampleId :
 02-A-02-B-02-C



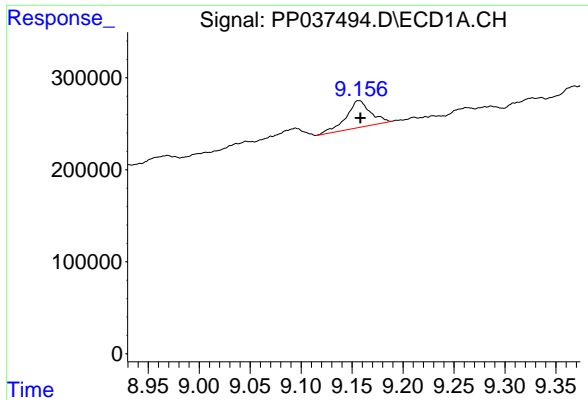
#33 AR-1260-3
 R.T.: 7.138 min
 Delta R.T.: -0.005 min
 Response: 170091
 Conc: 99.27 ng/ml



#34 AR-1260-4
 R.T.: 8.828 min
 Delta R.T.: -0.002 min
 Response: 412377
 Conc: 167.65 ng/ml



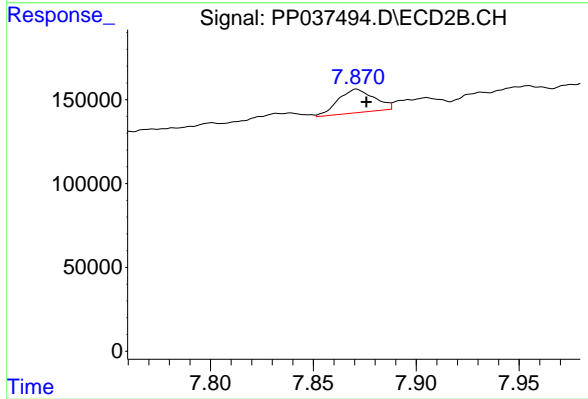
#34 AR-1260-4
 R.T.: 7.623 min
 Delta R.T.: -0.004 min
 Response: 180175
 Conc: 132.53 ng/ml



#35 AR-1260-5

R.T.: 9.157 min
Delta R.T.: -0.001 min
Response: 485492
Conc: 105.21 ng/ml

Instrument :
ECD_P
ClientSampleId :
02-A-02-B-02-C



#35 AR-1260-5

R.T.: 7.871 min
Delta R.T.: -0.005 min
Response: 170912
Conc: 52.99 ng/ml