

Data Path : Z:\pestpcbsrv\HPCHEM1\ECD_P\Data\PP072121\
 Data File : PP037499.D
 Signal(s) : Signal #1: ECD1A.CH Signal #2: ECD2B.CH
 Acq On : 21 Jul 2021 19:40
 Operator : DD\AJ
 Sample : M3114-03
 Misc :
 ALS Vial : 24 Sample Multiplier: 1

Instrument :
 ECD_P
 ClientSampleId :
 20210559-COM-32

Integration File signal 1: autoint1.e
 Integration File signal 2: autoint2.e
 Quant Time: Jul 22 00:36:04 2021
 Quant Method : Z:\pestpcbsrv\HPCHEM1\ECD_P\methods\PP070621.M
 Quant Title : GC EXTRACTABLES
 QLast Update : Wed Jul 07 08:32:32 2021
 Response via : Initial Calibration
 Integrator: ChemStation 6890 Scale Mode: Small noise peaks clipped

Volume Inj. : 2 µl
 Signal #1 Phase : ZB-MR1 Signal #2 Phase: ZB-MR2
 Signal #1 Info : 30Mx0.32mmx 0.50µ Signal #2 Info : 30M x 0.32mm x 0.25µm

Compound	RT#1	RT#2	Resp#1	Resp#2	ng/ml	ng/ml

System Monitoring Compounds						
1) SA Tetrachlo...	4.958	3.948	821427	509321	18.073	18.613
2) SA Decachlor...	10.989	9.240	576820	277922	12.530	9.985

Target Compounds

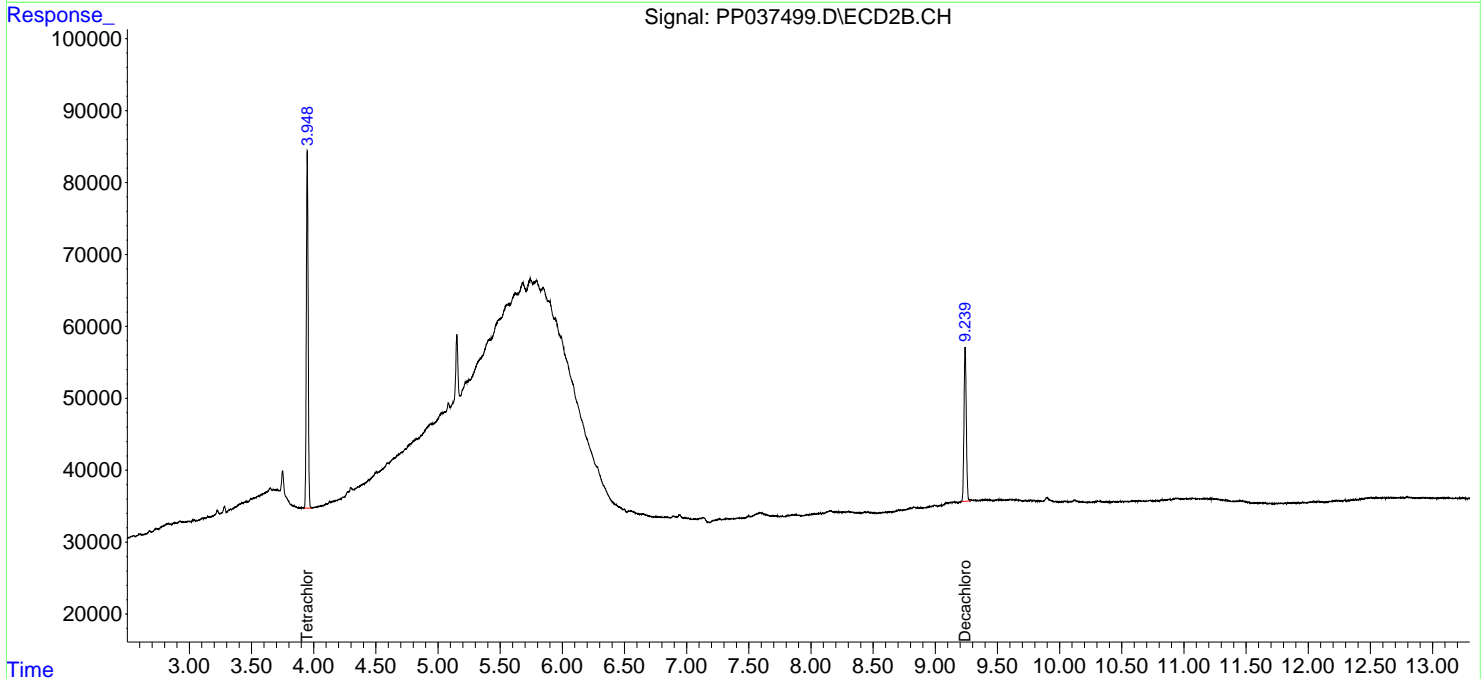
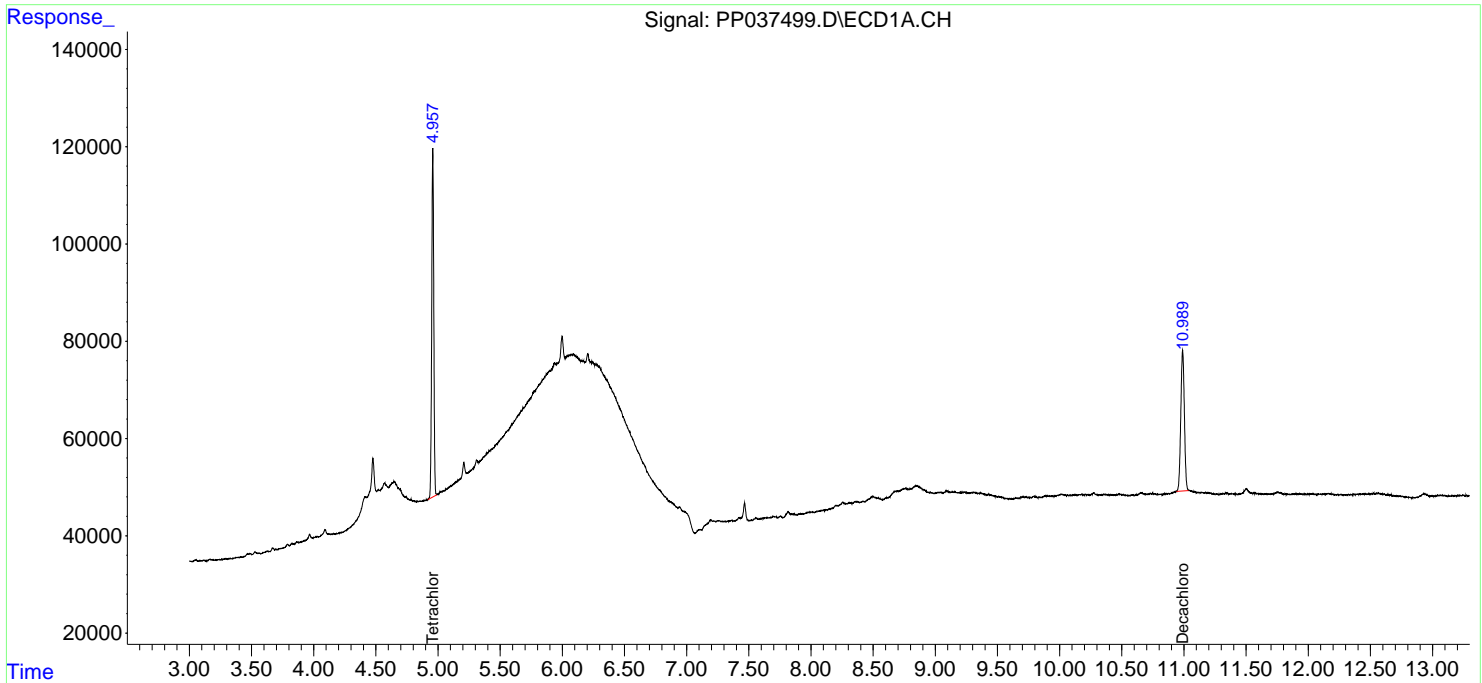
(f)=RT Delta > 1/2 Window (#)=Amounts differ by > 25% (m)=manual int.

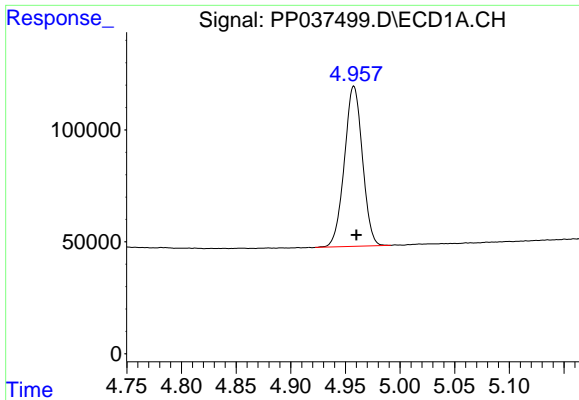
Data Path : Z:\pestpcbsrv\HPCHEM1\ECD_P\Data\PP072121\
 Data File : PP037499.D
 Signal(s) : Signal #1: ECD1A.CH Signal #2: ECD2B.CH
 Acq On : 21 Jul 2021 19:40
 Operator : DD\AJ
 Sample : M3114-03
 Misc :
 ALS Vial : 24 Sample Multiplier: 1

Instrument :
 ECD_P
ClientSampleId :
 20210559-COM-32

Integration File signal 1: autoint1.e
 Integration File signal 2: autoint2.e
 Quant Time: Jul 22 00:36:04 2021
 Quant Method : Z:\pestpcbsrv\HPCHEM1\ECD_P\methods\PP070621.M
 Quant Title : GC EXTRACTABLES
 QLast Update : Wed Jul 07 08:32:32 2021
 Response via : Initial Calibration
 Integrator: ChemStation 6890 Scale Mode: Small noise peaks clipped

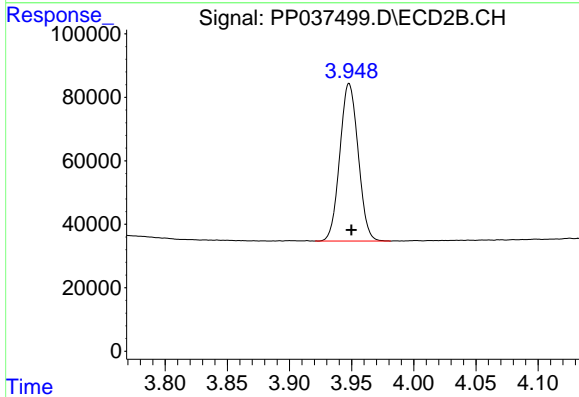
Volume Inj. : 2 µl
 Signal #1 Phase : ZB-MR1 Signal #2 Phase: ZB-MR2
 Signal #1 Info : 30Mx0.32mmx 0.50µ Signal #2 Info : 30M x 0.32mm x 0.25µm



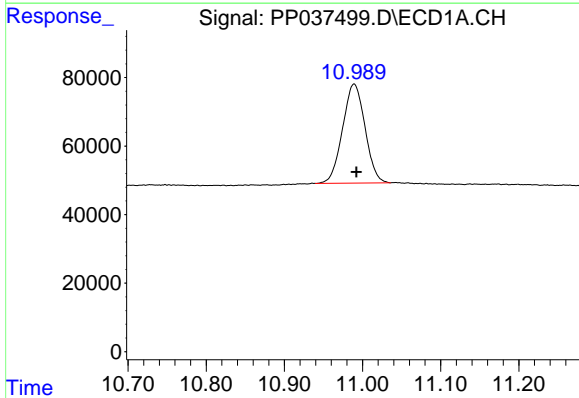


#1 Tetrachloro-m-xylene
 R.T.: 4.958 min
 Delta R.T.: -0.002 min
 Response: 821427
 Conc: 18.07 ng/ml

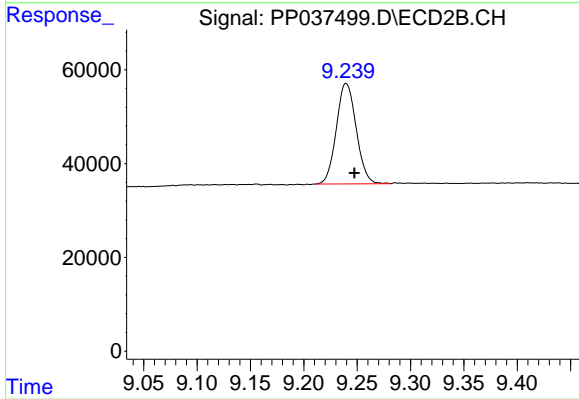
Instrument :
 ECD_P
 ClientSampleId :
 20210559-COM-32



#1 Tetrachloro-m-xylene
 R.T.: 3.948 min
 Delta R.T.: -0.002 min
 Response: 509321
 Conc: 18.61 ng/ml



#2 Decachlorobiphenyl
 R.T.: 10.989 min
 Delta R.T.: -0.003 min
 Response: 576820
 Conc: 12.53 ng/ml



#2 Decachlorobiphenyl
 R.T.: 9.240 min
 Delta R.T.: -0.008 min
 Response: 277922
 Conc: 9.98 ng/ml