

Data Path : Z:\pestpcbsrv\HPCHEM1\ECD_P\Data\PP072122\
 Data File : PP049701.D
 Signal(s) : Signal #1: ECD1A.ch Signal #2: ECD2B.ch
 Acq On : 21 Jul 2022 14:52
 Operator : YP\AJ
 Sample : N3810-02
 Misc :
 ALS Vial : 14 Sample Multiplier: 1

Instrument :
 ECD_P
 ClientSampleId :

Integration File signal 1: autoint1.e
 Integration File signal 2: autoint2.e
 Quant Time: Jul 21 16:34:59 2022
 Quant Method : Z:\pestpcbsrv\HPCHEM1\ECD_P\methods\PP071422.M
 Quant Title : GC EXTRACTABLES
 QLast Update : Thu Jul 14 06:08:44 2022
 Response via : Initial Calibration
 Integrator: ChemStation

Volume Inj. : 2 µl
 Signal #1 Phase : ZB-MR1 Signal #2 Phase: ZB-MR2
 Signal #1 Info : 30Mx0.32mmx 0.50µ Signal #2 Info : 30M x 0.32mm x 0.25µm

Compound	RT#1	RT#2	Resp#1	Resp#2	ng/ml	ng/ml

System Monitoring Compounds						
1) SA Tetrachlo...	4.353	3.602	25975984	43225000	17.900	17.684
2) SA Decachlor...	10.104	8.569	17710097	14821142	12.521	12.726
Target Compounds						
6) L1 AR-1016-4	0.000	4.909	0	601088	N.D.	11.307 #
7) L1 AR-1016-5	0.000	5.113	0	1215781	N.D.	17.682 #
9) L2 AR-1221-2	0.000	3.898	0	826785	N.D.	36.196 #
14) L3 AR-1232-4	0.000	4.961	0	358216	N.D.	15.661 #
15) L3 AR-1232-5	0.000	5.113	0	1215781	N.D.	47.258 #
19) L4 AR-1242-4	0.000	4.961	0	358216	N.D.	6.835 #
20) L4 AR-1242-5	0.000	5.474	0	930310	N.D.	14.636 #
22) L5 AR-1248-2	0.000	4.909	0	601088	N.D.	8.076 #
23) L5 AR-1248-3	0.000	4.961	0	358216	N.D.	4.691 #
24) L5 AR-1248-4	0.000	5.113	0	1215781	N.D.	13.390 #
25) L5 AR-1248-5	0.000	5.519	0	565197	N.D.	6.781 #
26) L6 AR-1254-1	0.000	5.474	0	930310	N.D.	7.335 #
27) L6 AR-1254-2	6.607	5.616	6897919	1415661	70.804	12.808 #
28) L6 AR-1254-3	7.001f	6.018	3690963	1322129	35.722	8.122 #
29) L6 AR-1254-4	7.265	6.246	7901483	1609317	98.702	16.633 #
30) L6 AR-1254-5	7.683	6.661	6837750	1151853	76.931	8.692 #
31) L7 AR-1260-1	0.000	6.149	0	2135744	N.D.	20.379 #
32) L7 AR-1260-2	7.393	6.328	5474749	1831564	57.833	15.222 #
33) L7 AR-1260-3	7.752	6.489	1791012	1127957	28.601	9.968 #
34) L7 AR-1260-4	0.000	6.956	0	340434	N.D.	4.451 #
35) L7 AR-1260-5	8.302	7.199	737041	726144	4.794	4.246
36) L8 AR-1262-1	7.752	6.696	1791012	434763	18.607	3.668 #
37) L8 AR-1262-2	8.302	6.956	737041	340434	4.139	3.369
38) L8 AR-1262-3	8.634f	7.485	3031353	852648	38.602	13.172 #
39) L8 AR-1262-4	8.672f	7.548	983590	502545	21.766	3.928 #
41) L9 AR-1268-1	8.634f	7.485	3031353	852648	14.847	4.642 #
42) L9 AR-1268-2	8.672f	7.548	983590	502545	5.303	2.905 #
43) L9 AR-1268-3	0.000	7.752	0	95764	N.D.	0.681 #
45) L9 AR-1268-5	9.793f	8.319	8178966	262738	15.884	0.642 #

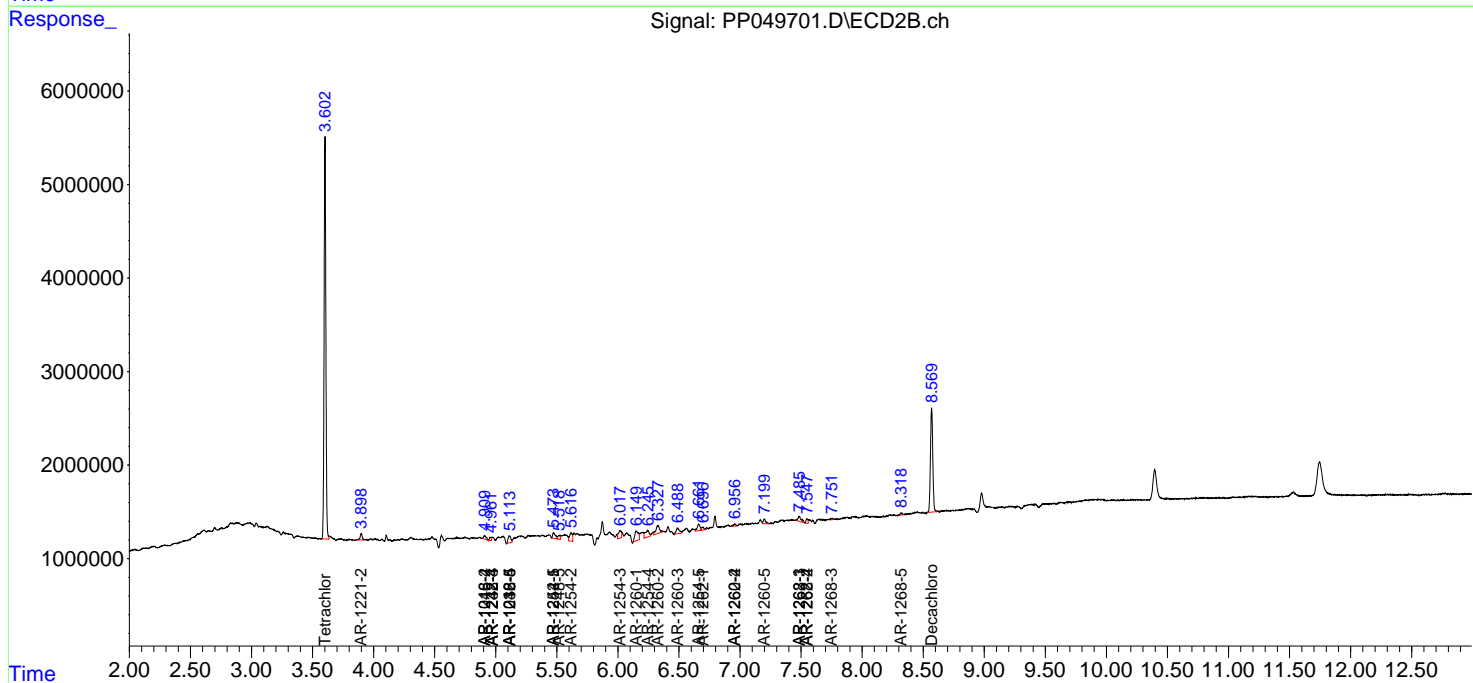
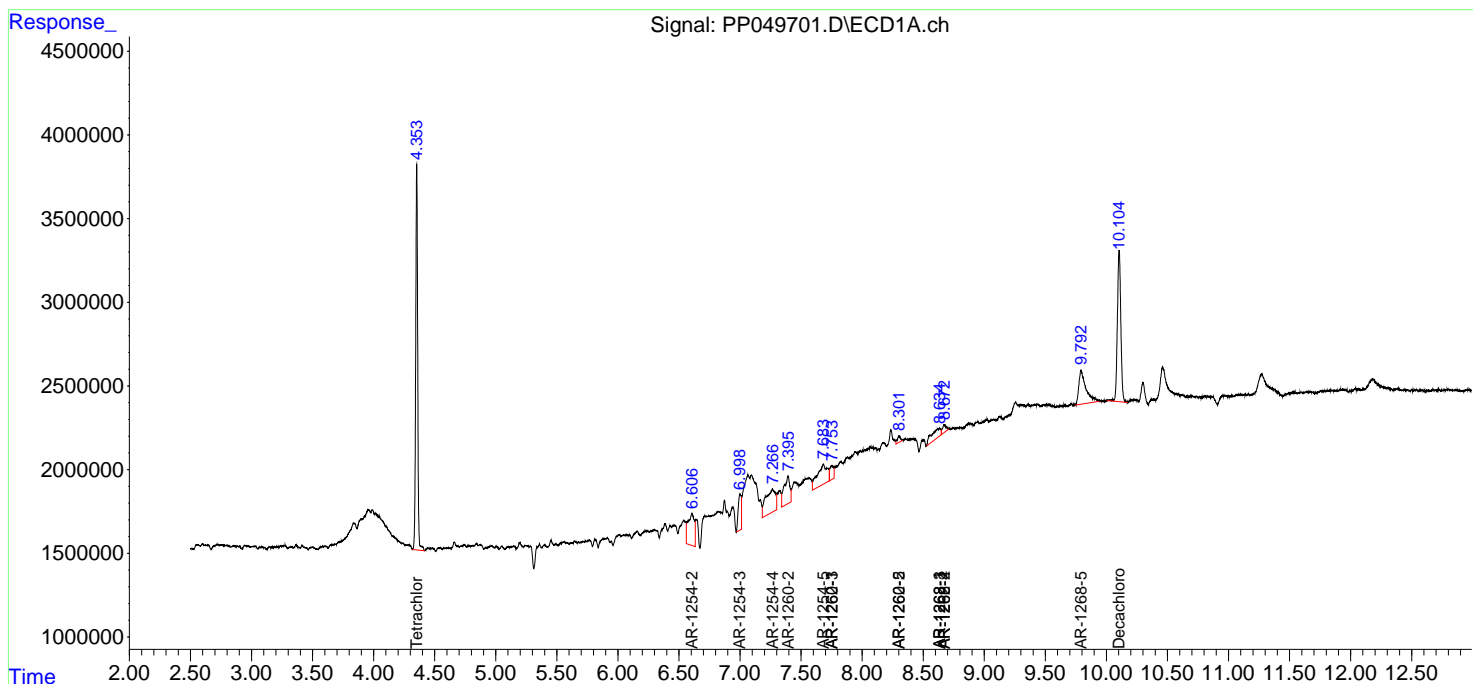
(f)=RT Delta > 1/2 Window (#)=Amounts differ by > 25% (m)=manual int.

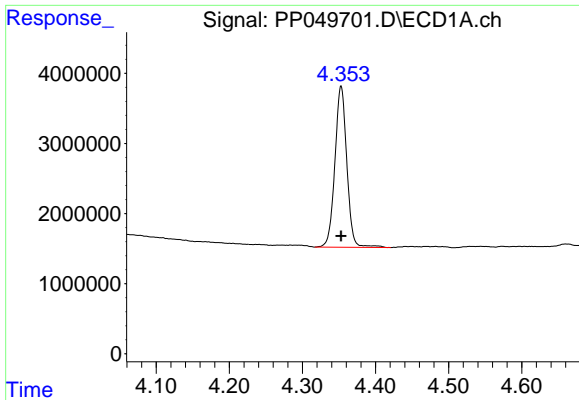
Data Path : Z:\pestpcbsrv\HPCHEM1\ECD_P\Data\PP072122\
 Data File : PP049701.D
 Signal(s) : Signal #1: ECD1A.ch Signal #2: ECD2B.ch
 Acq On : 21 Jul 2022 14:52
 Operator : YP\AJ
 Sample : N3810-02
 Misc :
 ALS Vial : 14 Sample Multiplier: 1

Instrument :
 ECD_P
 ClientSampleId :

Integration File signal 1: autoint1.e
 Integration File signal 2: autoint2.e
 Quant Time: Jul 21 16:34:59 2022
 Quant Method : Z:\pestpcbsrv\HPCHEM1\ECD_P\methods\PP071422.M
 Quant Title : GC EXTRACTABLES
 QLast Update : Thu Jul 14 06:08:44 2022
 Response via : Initial Calibration
 Integrator: ChemStation

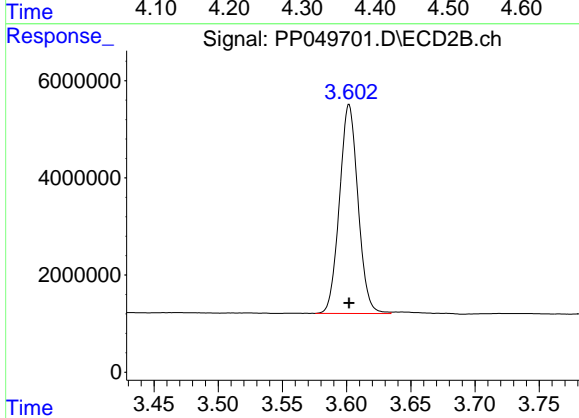
Volume Inj. : 2 µl
 Signal #1 Phase : ZB-MR1 Signal #2 Phase: ZB-MR2
 Signal #1 Info : 30Mx0.32mmx 0.50µ Signal #2 Info : 30M x 0.32mm x 0.25µm



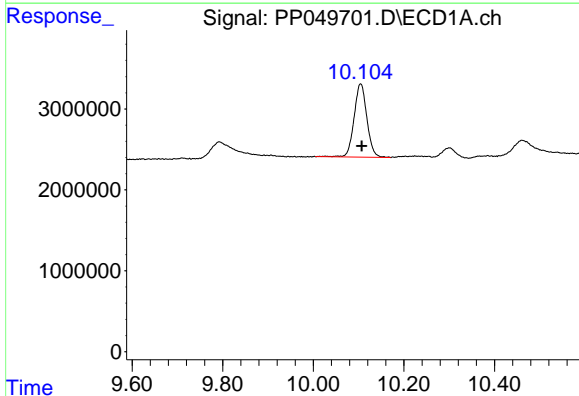


#1 Tetrachloro-m-xylene
 R.T.: 4.353 min
 Delta R.T.: 0.000 min
 Response: 25975984
 Conc: 17.90 ng/ml

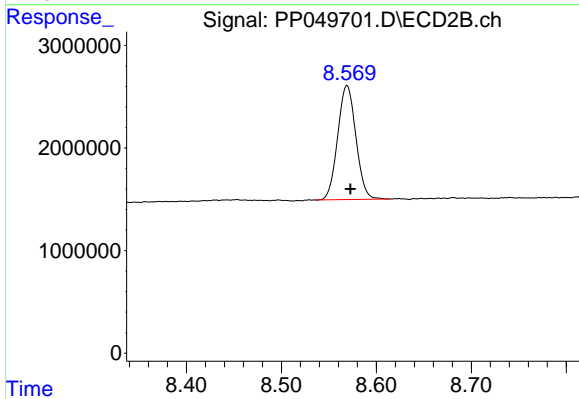
Instrument :
 ECD_P
 ClientSampleId :



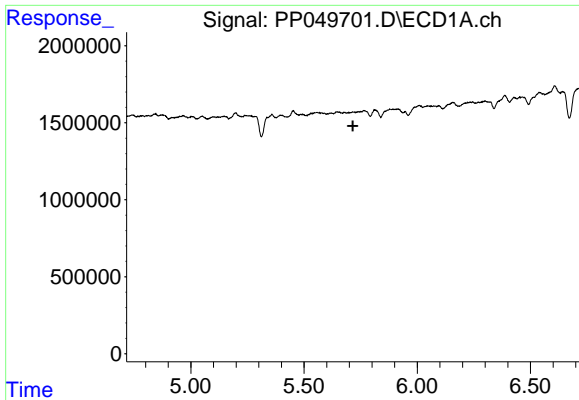
#1 Tetrachloro-m-xylene
 R.T.: 3.602 min
 Delta R.T.: 0.000 min
 Response: 43225000
 Conc: 17.68 ng/ml



#2 Decachlorobiphenyl
 R.T.: 10.104 min
 Delta R.T.: -0.003 min
 Response: 17710097
 Conc: 12.52 ng/ml



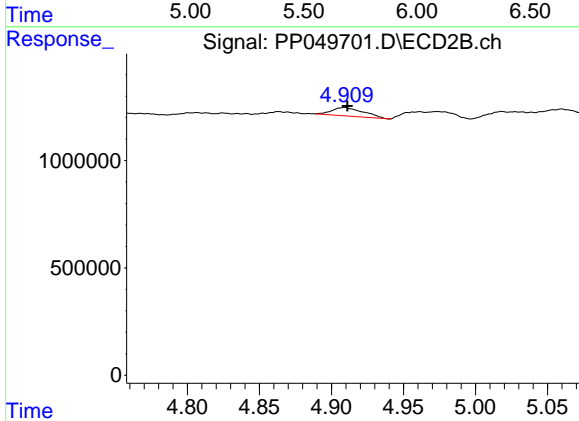
#2 Decachlorobiphenyl
 R.T.: 8.569 min
 Delta R.T.: -0.004 min
 Response: 14821142
 Conc: 12.73 ng/ml



#6 AR-1016-4

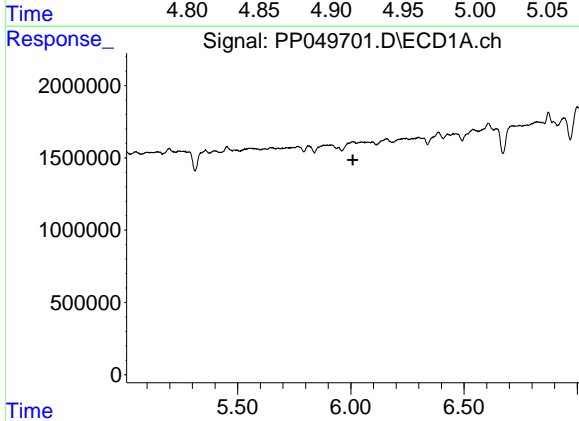
R.T.: 0.000 min
 Exp R.T.: 5.715 min
 Response: 0
 Conc: N.D.

Instrument :
 ECD_P
 ClientSampleId :



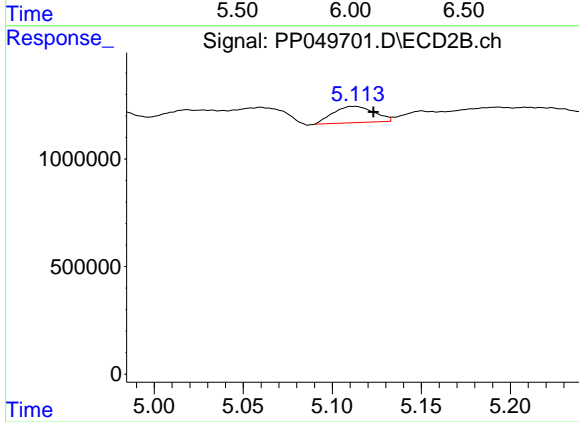
#6 AR-1016-4

R.T.: 4.909 min
 Delta R.T.: -0.002 min
 Response: 601088
 Conc: 11.31 ng/ml



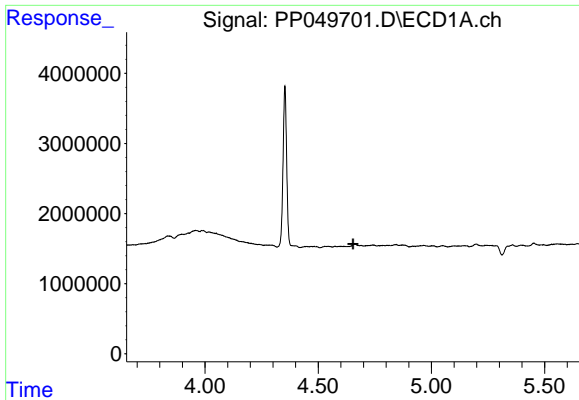
#7 AR-1016-5

R.T.: 0.000 min
 Exp R.T.: 6.009 min
 Response: 0
 Conc: N.D.



#7 AR-1016-5

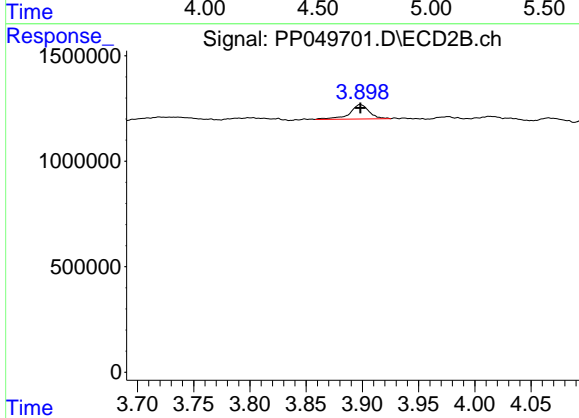
R.T.: 5.113 min
 Delta R.T.: -0.010 min
 Response: 1215781
 Conc: 17.68 ng/ml



#9 AR-1221-2

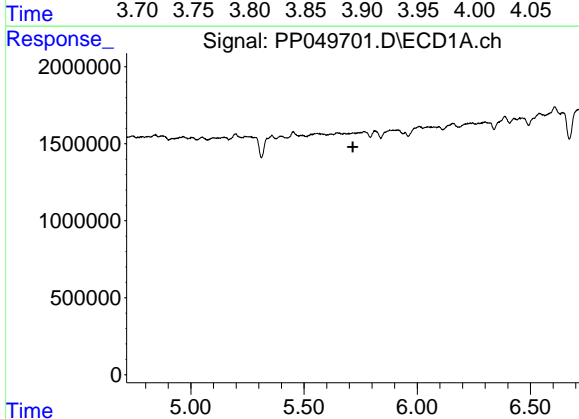
R.T.: 0.000 min
 Exp R.T.: 4.654 min
 Response: 0
 Conc: N.D.

Instrument :
 ECD_P
 ClientSampleId :



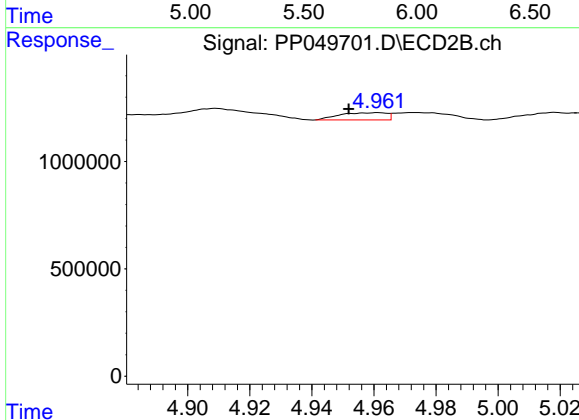
#9 AR-1221-2

R.T.: 3.898 min
 Delta R.T.: 0.000 min
 Response: 826785
 Conc: 36.20 ng/ml



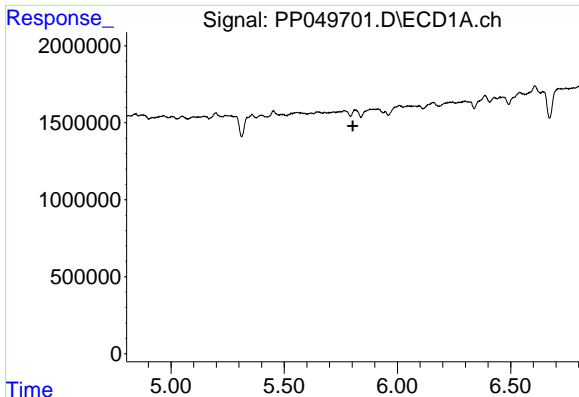
#14 AR-1232-4

R.T.: 0.000 min
 Exp R.T.: 5.716 min
 Response: 0
 Conc: N.D.



#14 AR-1232-4

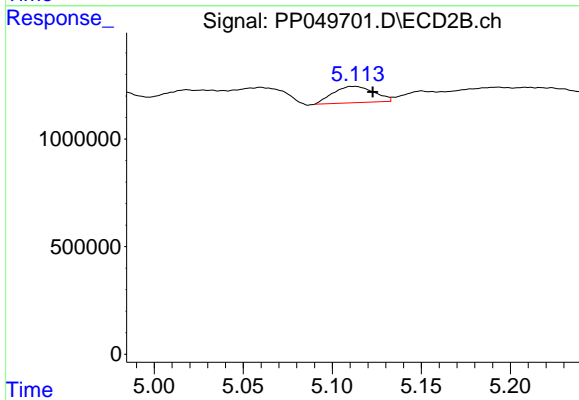
R.T.: 4.961 min
 Delta R.T.: 0.009 min
 Response: 358216
 Conc: 15.66 ng/ml



#15 AR-1232-5

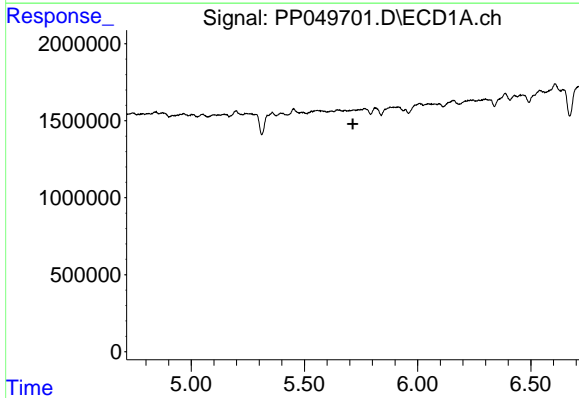
R.T.: 0.000 min
 Exp R.T. : 5.803 min
 Response: 0
 Conc: N.D.

Instrument :
 ECD_P
 ClientSampleId :



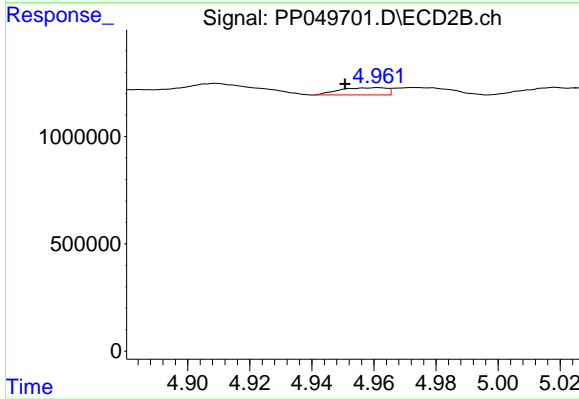
#15 AR-1232-5

R.T.: 5.113 min
 Delta R.T.: -0.009 min
 Response: 1215781
 Conc: 47.26 ng/ml



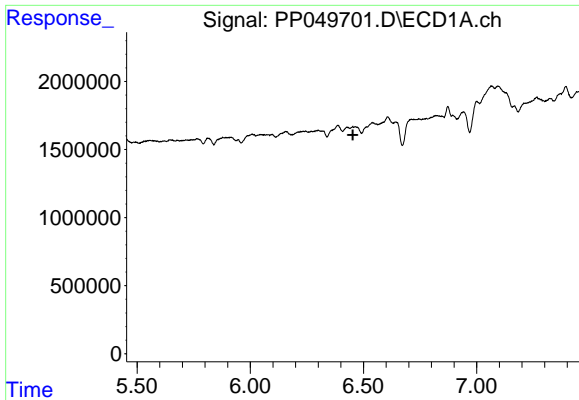
#19 AR-1242-4

R.T.: 0.000 min
 Exp R.T. : 5.714 min
 Response: 0
 Conc: N.D.



#19 AR-1242-4

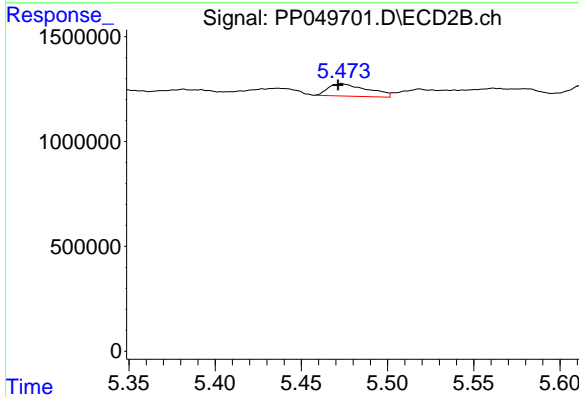
R.T.: 4.961 min
 Delta R.T.: 0.011 min
 Response: 358216
 Conc: 6.83 ng/ml



#20 AR-1242-5

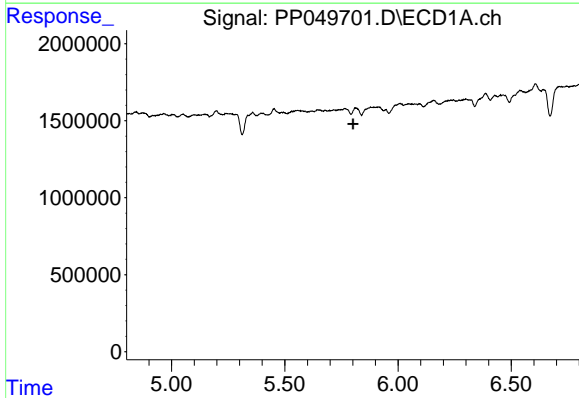
R.T.: 0.000 min
 Exp R.T.: 6.453 min
 Response: 0
 Conc: N.D.

Instrument :
 ECD_P
 ClientSampleId :



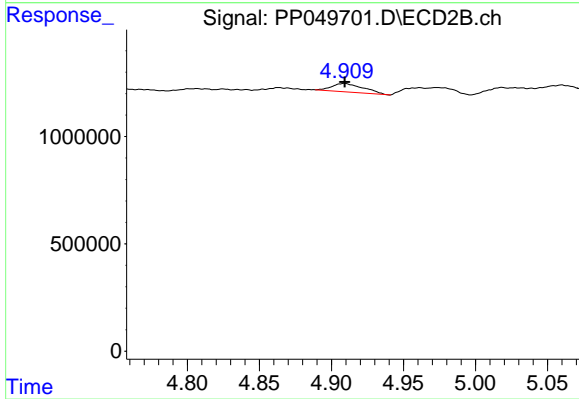
#20 AR-1242-5

R.T.: 5.474 min
 Delta R.T.: 0.002 min
 Response: 930310
 Conc: 14.64 ng/ml



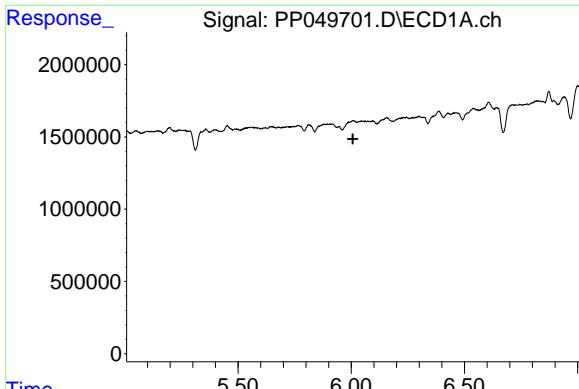
#22 AR-1248-2

R.T.: 0.000 min
 Exp R.T.: 5.801 min
 Response: 0
 Conc: N.D.



#22 AR-1248-2

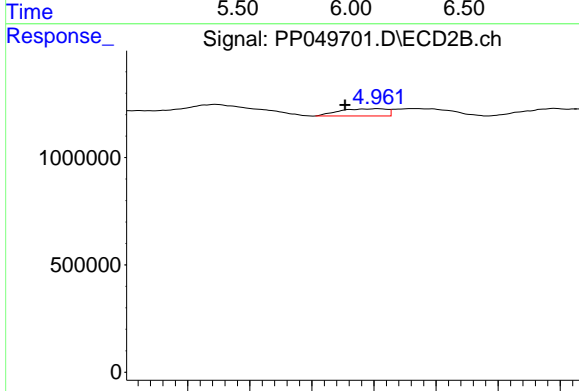
R.T.: 4.909 min
 Delta R.T.: 0.000 min
 Response: 601088
 Conc: 8.08 ng/ml



#23 AR-1248-3

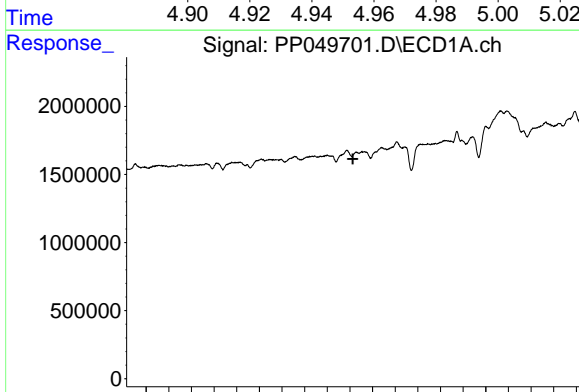
R.T.: 0.000 min
 Exp R.T.: 6.007 min
 Response: 0
 Conc: N.D.

Instrument :
 ECD_P
 ClientSampleId :



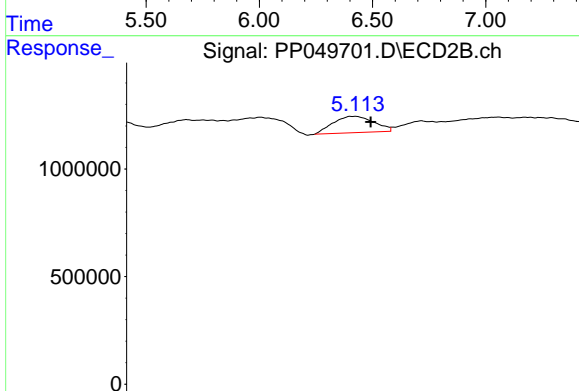
#23 AR-1248-3

R.T.: 4.961 min
 Delta R.T.: 0.011 min
 Response: 358216
 Conc: 4.69 ng/ml



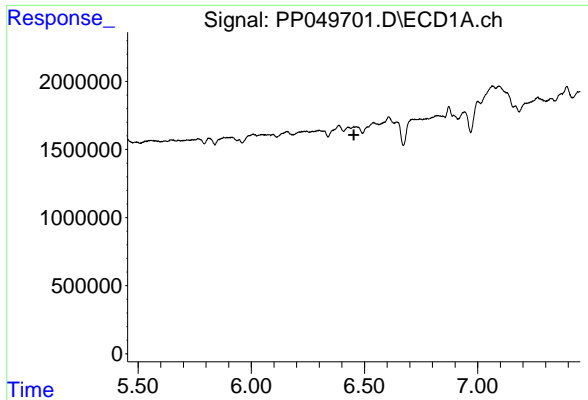
#24 AR-1248-4

R.T.: 0.000 min
 Exp R.T.: 6.413 min
 Response: 0
 Conc: N.D.



#24 AR-1248-4

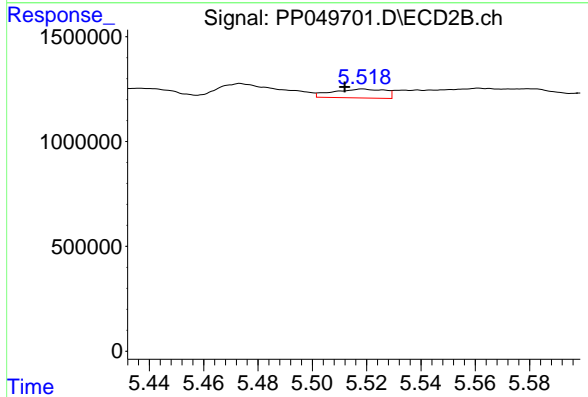
R.T.: 5.113 min
 Delta R.T.: -0.008 min
 Response: 1215781
 Conc: 13.39 ng/ml



#25 AR-1248-5

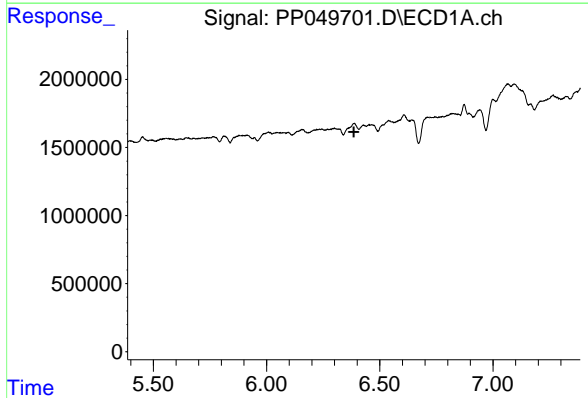
R.T.: 0.000 min
 Exp R.T.: 6.453 min
 Response: 0
 Conc: N.D.

Instrument :
 ECD_P
 ClientSampleId :



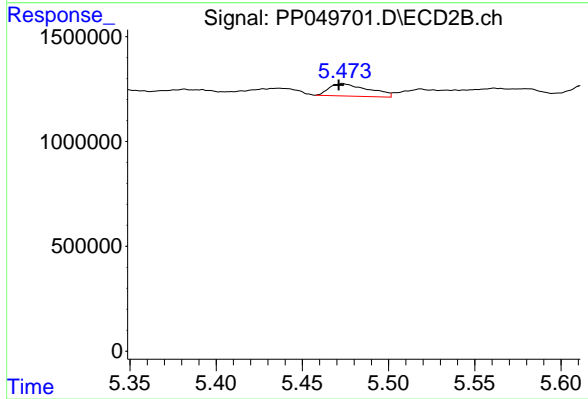
#25 AR-1248-5

R.T.: 5.519 min
 Delta R.T.: 0.007 min
 Response: 565197
 Conc: 6.78 ng/ml



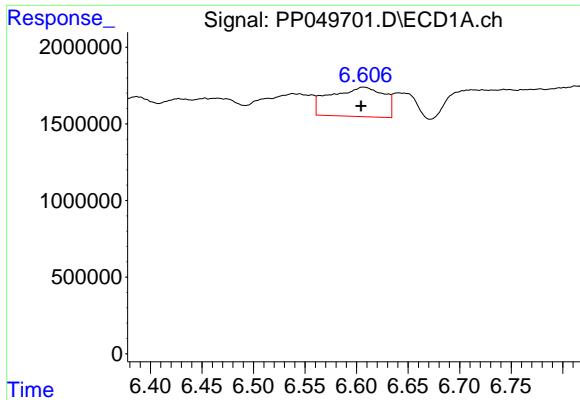
#26 AR-1254-1

R.T.: 0.000 min
 Exp R.T.: 6.385 min
 Response: 0
 Conc: N.D.



#26 AR-1254-1

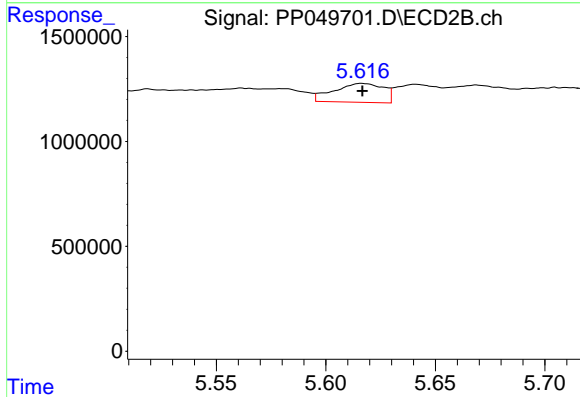
R.T.: 5.474 min
 Delta R.T.: 0.002 min
 Response: 930310
 Conc: 7.34 ng/ml



#27 AR-1254-2

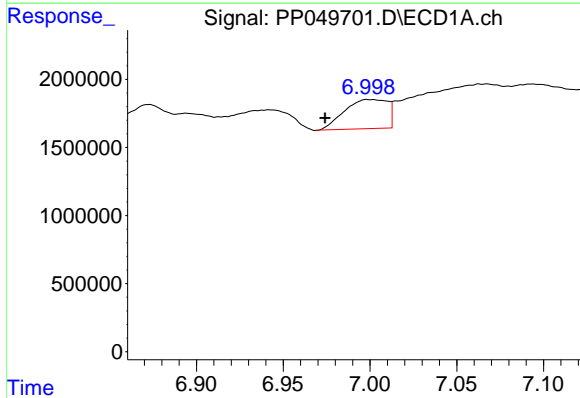
R.T.: 6.607 min
 Delta R.T.: 0.003 min
 Response: 6897919
 Conc: 70.80 ng/ml

Instrument :
 ECD_P
 ClientSampleId :



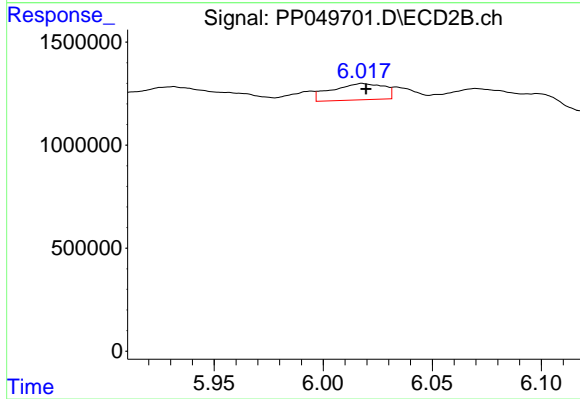
#27 AR-1254-2

R.T.: 5.616 min
 Delta R.T.: 0.000 min
 Response: 1415661
 Conc: 12.81 ng/ml



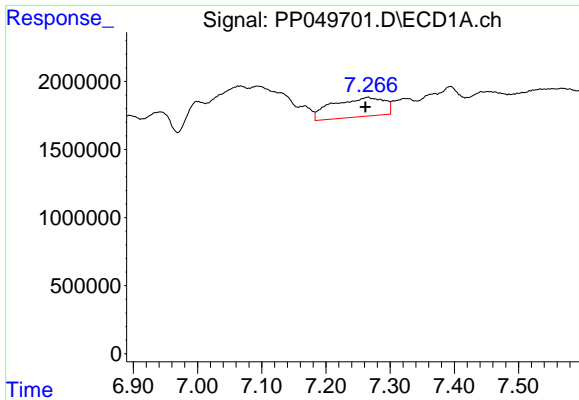
#28 AR-1254-3

R.T.: 7.001 min
 Delta R.T.: 0.027 min
 Response: 3690963
 Conc: 35.72 ng/ml



#28 AR-1254-3

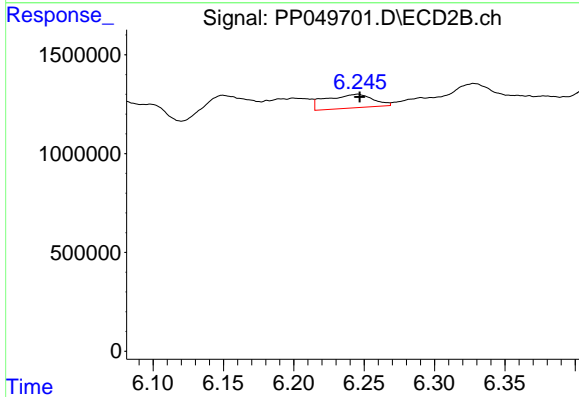
R.T.: 6.018 min
 Delta R.T.: -0.002 min
 Response: 1322129
 Conc: 8.12 ng/ml



#29 AR-1254-4

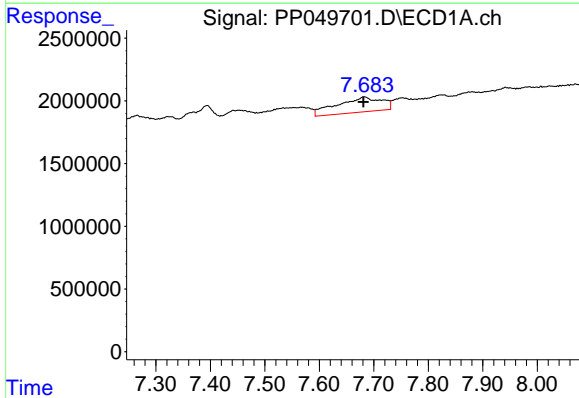
R.T.: 7.265 min
 Delta R.T.: 0.004 min
 Response: 7901483
 Conc: 98.70 ng/ml

Instrument :
 ECD_P
 ClientSampleId :



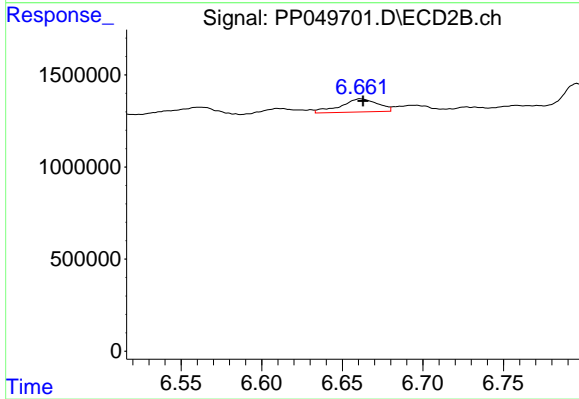
#29 AR-1254-4

R.T.: 6.246 min
 Delta R.T.: -0.001 min
 Response: 1609317
 Conc: 16.63 ng/ml



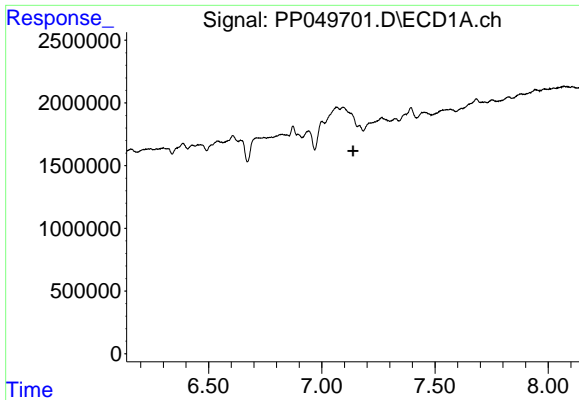
#30 AR-1254-5

R.T.: 7.683 min
 Delta R.T.: 0.002 min
 Response: 6837750
 Conc: 76.93 ng/ml



#30 AR-1254-5

R.T.: 6.661 min
 Delta R.T.: -0.002 min
 Response: 1151853
 Conc: 8.69 ng/ml

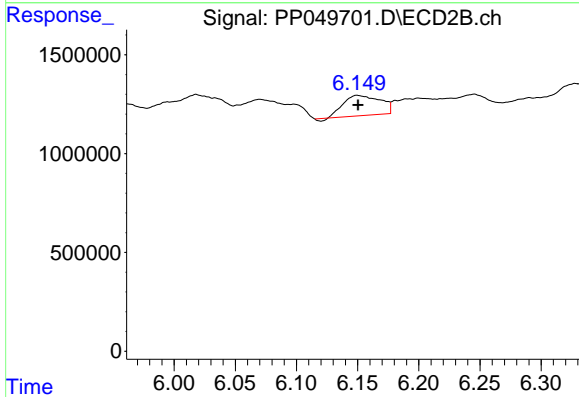


#31 AR-1260-1

R.T.: 0.000 min
 Exp R.T.: 7.138 min
 Response: 0
 Conc: N.D.

Instrument :
 ECD_P
 ClientSampleId :

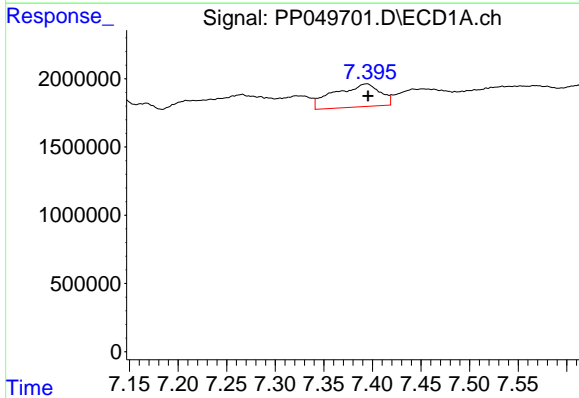
Time



#31 AR-1260-1

R.T.: 6.149 min
 Delta R.T.: -0.001 min
 Response: 2135744
 Conc: 20.38 ng/ml

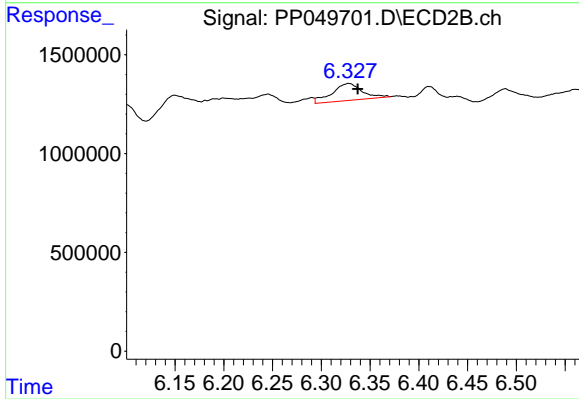
Time



#32 AR-1260-2

R.T.: 7.393 min
 Delta R.T.: -0.002 min
 Response: 5474749
 Conc: 57.83 ng/ml

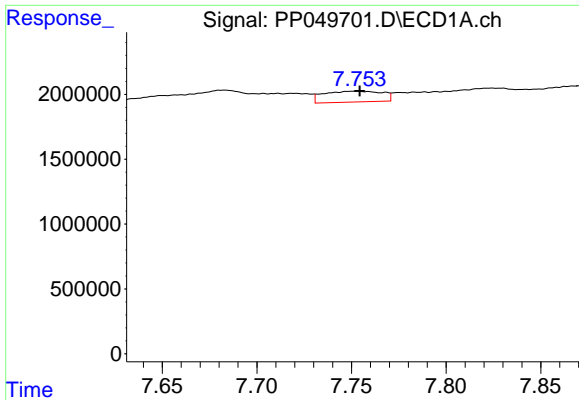
Time



#32 AR-1260-2

R.T.: 6.328 min
 Delta R.T.: -0.009 min
 Response: 1831564
 Conc: 15.22 ng/ml

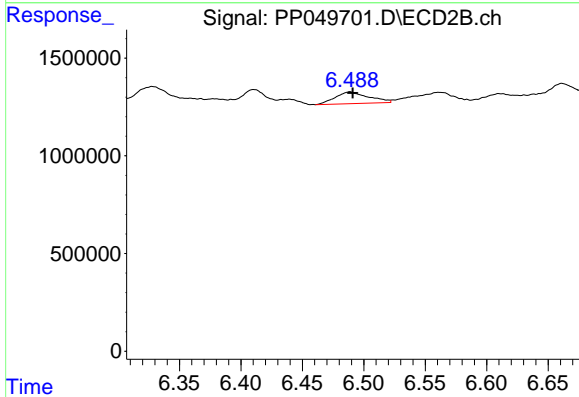
Time



#33 AR-1260-3

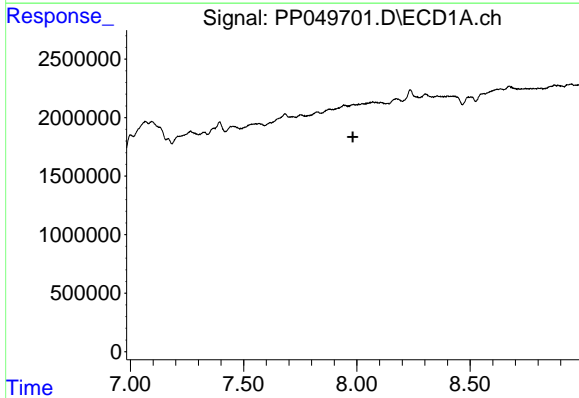
R.T.: 7.752 min
 Delta R.T.: -0.002 min
 Response: 1791012
 Conc: 28.60 ng/ml

Instrument :
 ECD_P
 ClientSampleId :



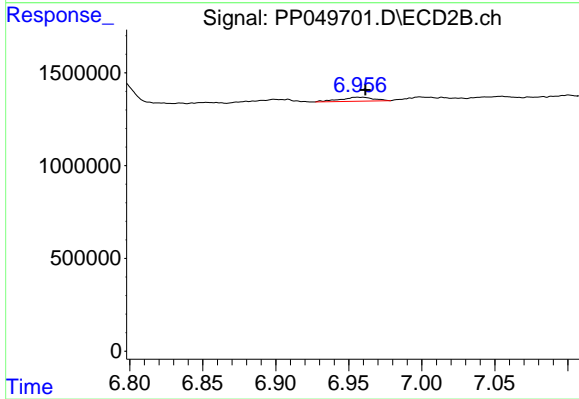
#33 AR-1260-3

R.T.: 6.489 min
 Delta R.T.: -0.002 min
 Response: 1127957
 Conc: 9.97 ng/ml



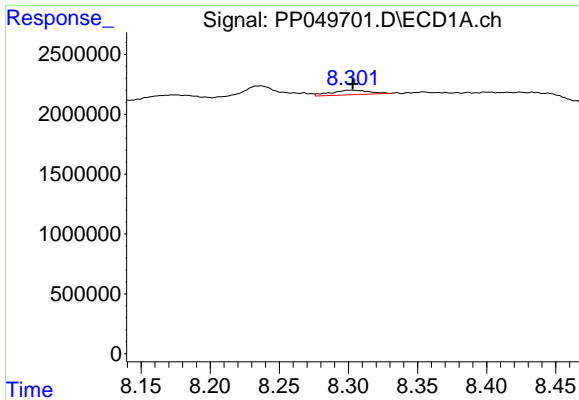
#34 AR-1260-4

R.T.: 0.000 min
 Exp R.T. : 7.983 min
 Response: 0
 Conc: N.D.



#34 AR-1260-4

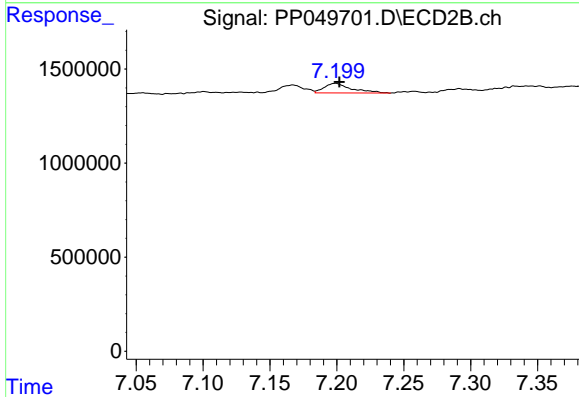
R.T.: 6.956 min
 Delta R.T.: -0.005 min
 Response: 340434
 Conc: 4.45 ng/ml



#35 AR-1260-5

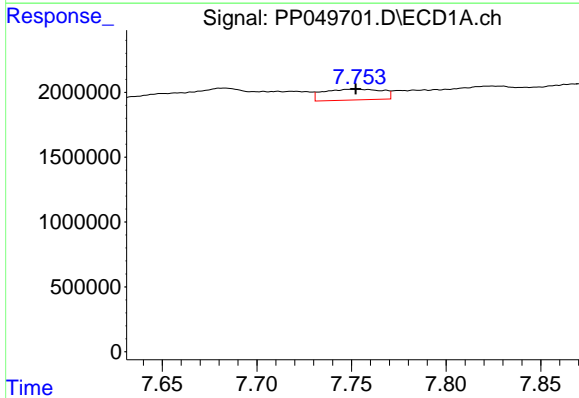
R.T.: 8.302 min
 Delta R.T.: -0.001 min
 Response: 737041
 Conc: 4.79 ng/ml

Instrument :
 ECD_P
 ClientSampleId :



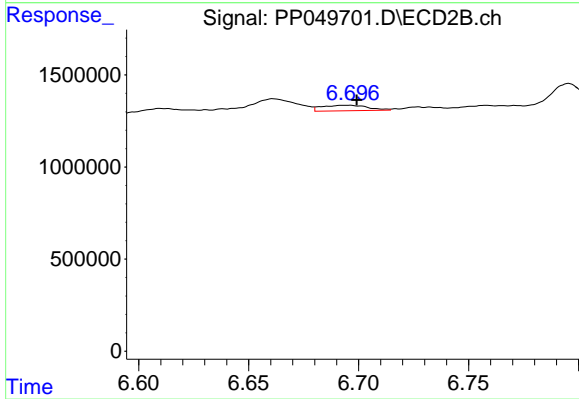
#35 AR-1260-5

R.T.: 7.199 min
 Delta R.T.: -0.003 min
 Response: 726144
 Conc: 4.25 ng/ml



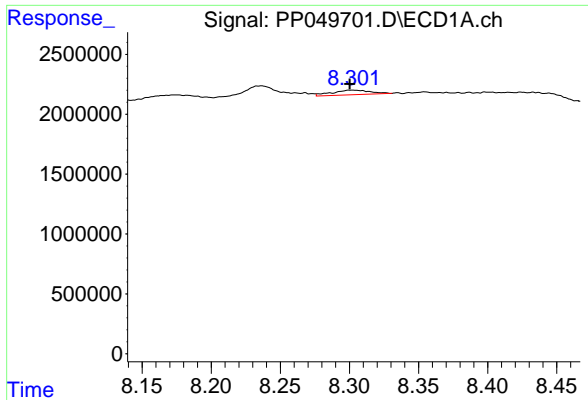
#36 AR-1262-1

R.T.: 7.752 min
 Delta R.T.: 0.000 min
 Response: 1791012
 Conc: 18.61 ng/ml



#36 AR-1262-1

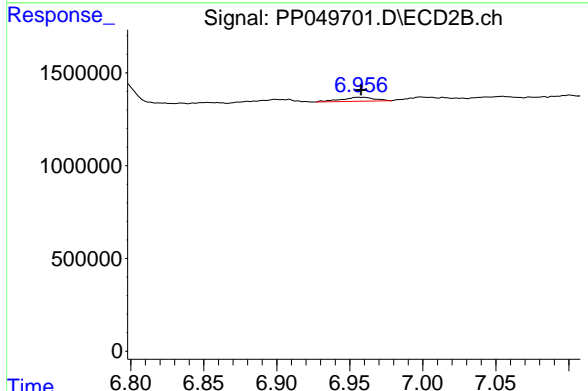
R.T.: 6.696 min
 Delta R.T.: -0.003 min
 Response: 434763
 Conc: 3.67 ng/ml



#37 AR-1262-2

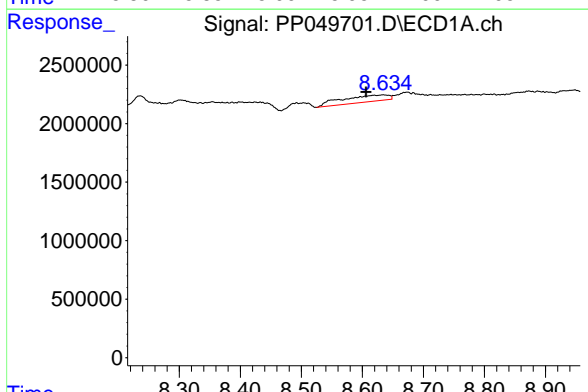
R.T.: 8.302 min
 Delta R.T.: 0.002 min
 Response: 737041
 Conc: 4.14 ng/ml

Instrument :
 ECD_P
 ClientSampleId :



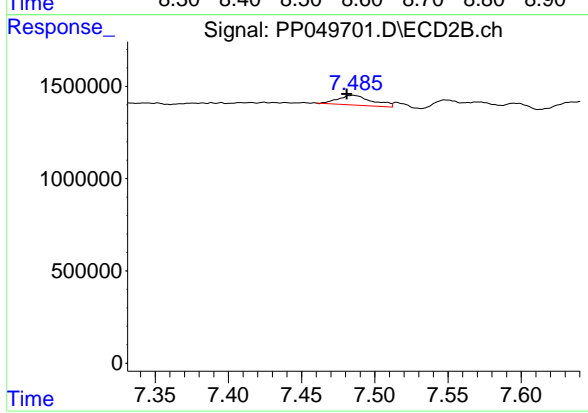
#37 AR-1262-2

R.T.: 6.956 min
 Delta R.T.: -0.002 min
 Response: 340434
 Conc: 3.37 ng/ml



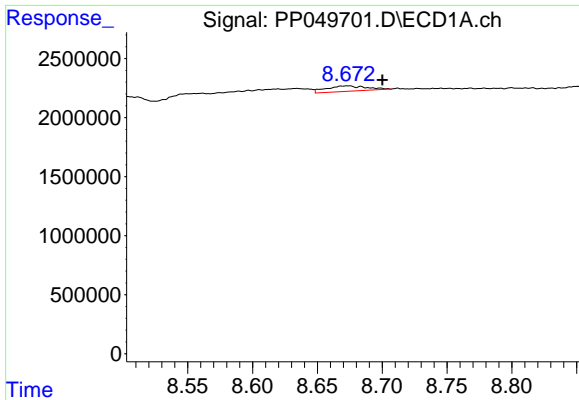
#38 AR-1262-3

R.T.: 8.634 min
 Delta R.T.: 0.028 min
 Response: 3031353
 Conc: 38.60 ng/ml



#38 AR-1262-3

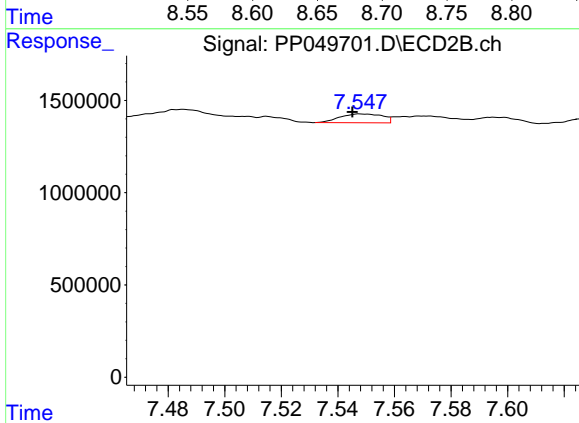
R.T.: 7.485 min
 Delta R.T.: 0.005 min
 Response: 852648
 Conc: 13.17 ng/ml



#39 AR-1262-4

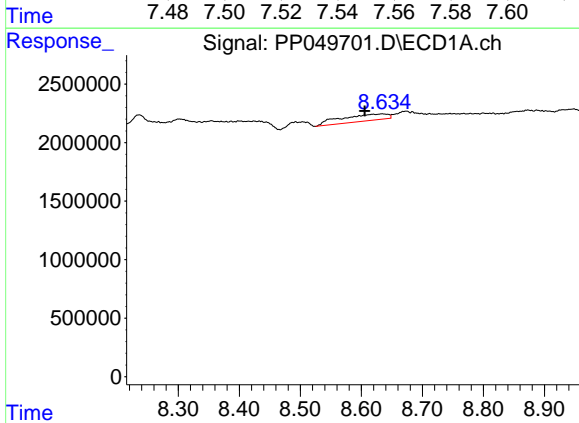
R.T.: 8.672 min
 Delta R.T.: -0.028 min
 Response: 983590
 Conc: 21.77 ng/ml

Instrument :
 ECD_P
 ClientSampleId :



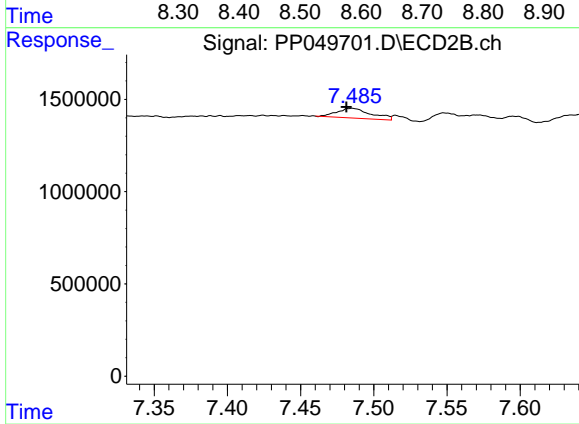
#39 AR-1262-4

R.T.: 7.548 min
 Delta R.T.: 0.003 min
 Response: 502545
 Conc: 3.93 ng/ml



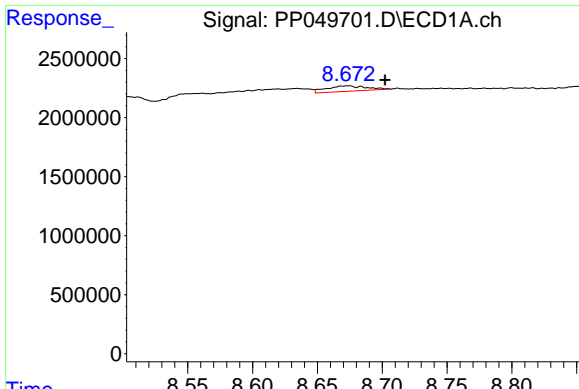
#41 AR-1268-1

R.T.: 8.634 min
 Delta R.T.: 0.028 min
 Response: 3031353
 Conc: 14.85 ng/ml



#41 AR-1268-1

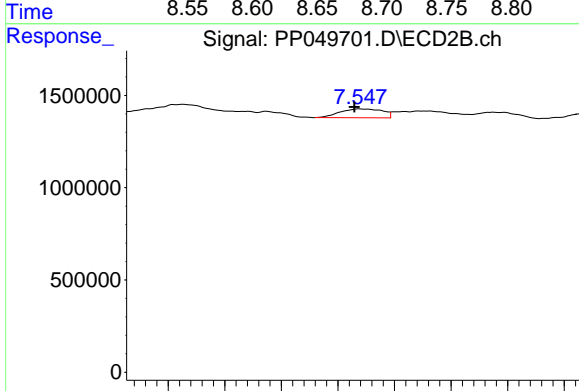
R.T.: 7.485 min
 Delta R.T.: 0.004 min
 Response: 852648
 Conc: 4.64 ng/ml



#42 AR-1268-2

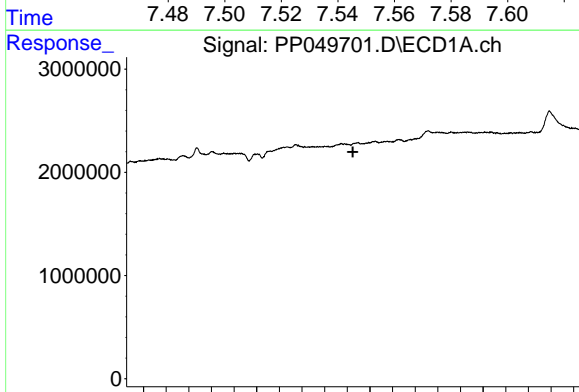
R.T.: 8.672 min
 Delta R.T.: -0.030 min
 Response: 983590
 Conc: 5.30 ng/ml

Instrument :
 ECD_P
 ClientSampleId :



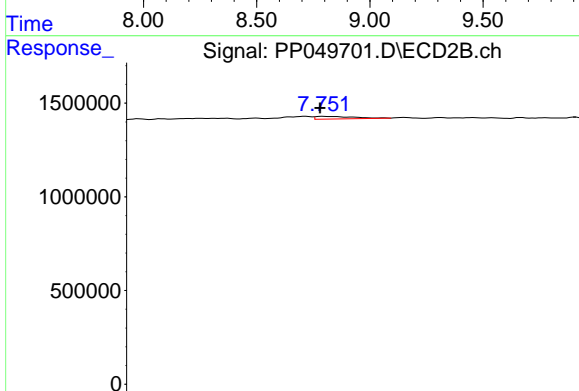
#42 AR-1268-2

R.T.: 7.548 min
 Delta R.T.: 0.002 min
 Response: 502545
 Conc: 2.90 ng/ml



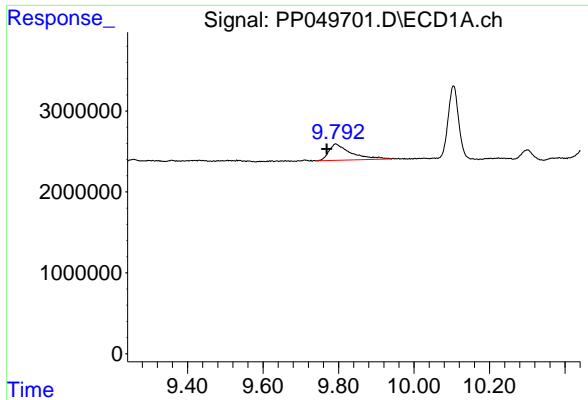
#43 AR-1268-3

R.T.: 0.000 min
 Exp R.T. : 8.925 min
 Response: 0
 Conc: N.D.



#43 AR-1268-3

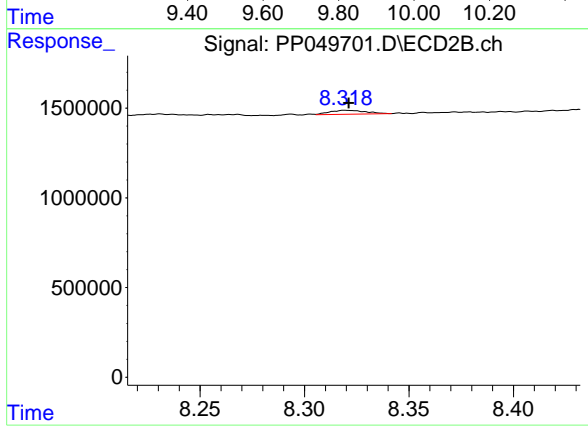
R.T.: 7.752 min
 Delta R.T.: 0.001 min
 Response: 95764
 Conc: 0.68 ng/ml



#45 AR-1268-5

R.T.: 9.793 min
Delta R.T.: 0.024 min
Response: 8178966
Conc: 15.88 ng/ml

Instrument :
ECD_P
ClientSampleId :



#45 AR-1268-5

R.T.: 8.319 min
Delta R.T.: -0.002 min
Response: 262738
Conc: 0.64 ng/ml