

Data Path : Z:\pestpcbsrv\HPCHEM1\ECD_P\Data\PP072123\
 Data File : PP058863.D
 Signal(s) : Signal #1: ECD1A.ch Signal #2: ECD2B.ch
 Acq On : 21 Jul 2023 21:41
 Operator : YP\AJ
 Sample : AR1242ICV500
 Misc :
 ALS Vial : 32 Sample Multiplier: 1

Instrument :
 ECD_P
 ClientSampleId :
 ICVPP072123AR1242

Integration File signal 1: autoint1.e
 Integration File signal 2: autoint2.e
 Quant Time: Jul 22 01:39:50 2023
 Quant Method : Z:\pestpcbsrv\HPCHEM1\ECD_P\methods\PP072123.M
 Quant Title : GC EXTRACTABLES
 QLast Update : Sat Jul 22 01:38:14 2023
 Response via : Initial Calibration
 Integrator: ChemStation

Volume Inj. : 2 µl
 Signal #1 Phase : ZB-MR1 Signal #2 Phase: ZB-MR2
 Signal #1 Info : 30Mx0.32mmx 0.50µ Signal #2 Info : 30M x 0.32mm x 0.25µm

Compound	RT#1	RT#2	Resp#1	Resp#2	ng/ml	ng/ml

System Monitoring Compounds						
1) SA Tetrachlo...	4.424	3.663	71414350	104.0E6	51.526	53.634
2) SA Decachlor...	10.223	8.713	46756862	81067806	53.104	55.339
Target Compounds						
16) L4 AR-1242-1	5.601	4.761	19550188	25928654	517.178	521.673
17) L4 AR-1242-2	5.624	4.780	27771315	37904454	515.745	531.729
18) L4 AR-1242-3	5.686	4.957	18133338	20390117	523.582	537.757
19) L4 AR-1242-4	5.785	5.041	14781921	21618778	525.091	537.071
20) L4 AR-1242-5	6.526	5.568	15009411	24962832	528.896	518.548

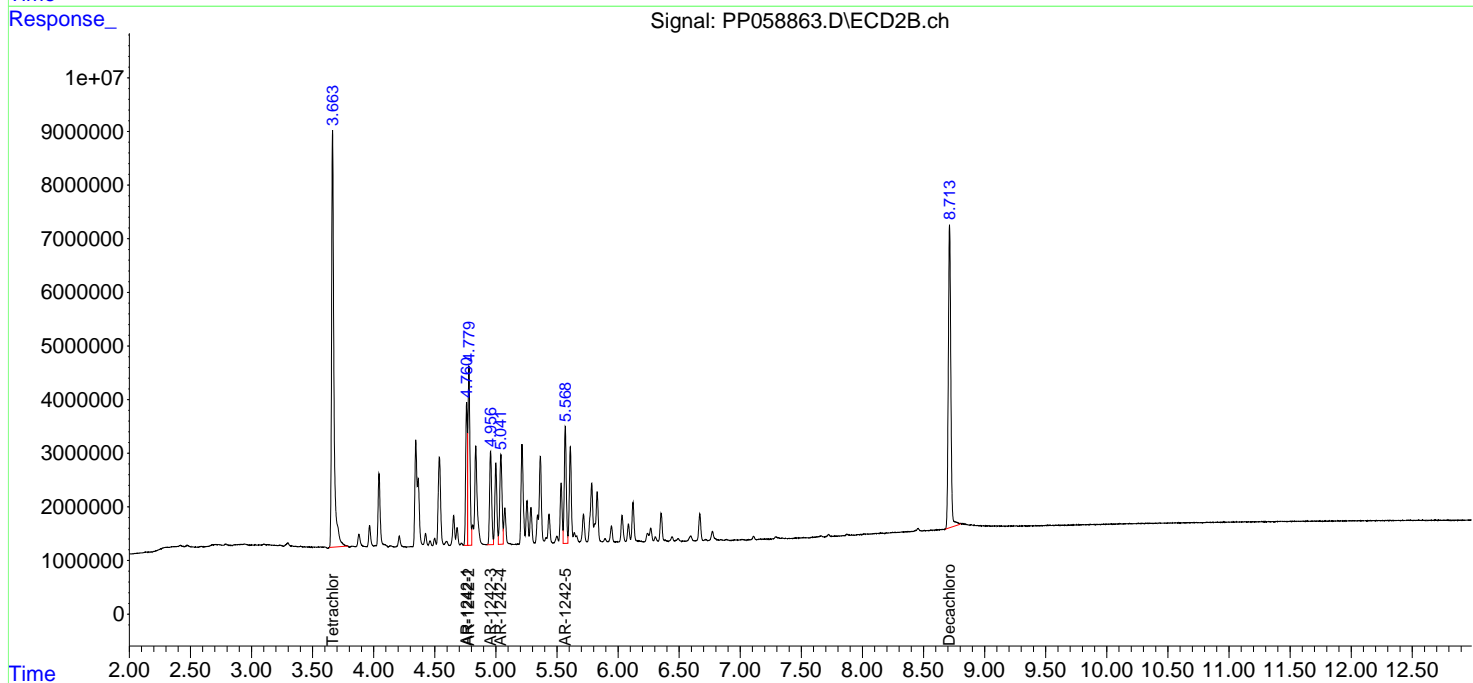
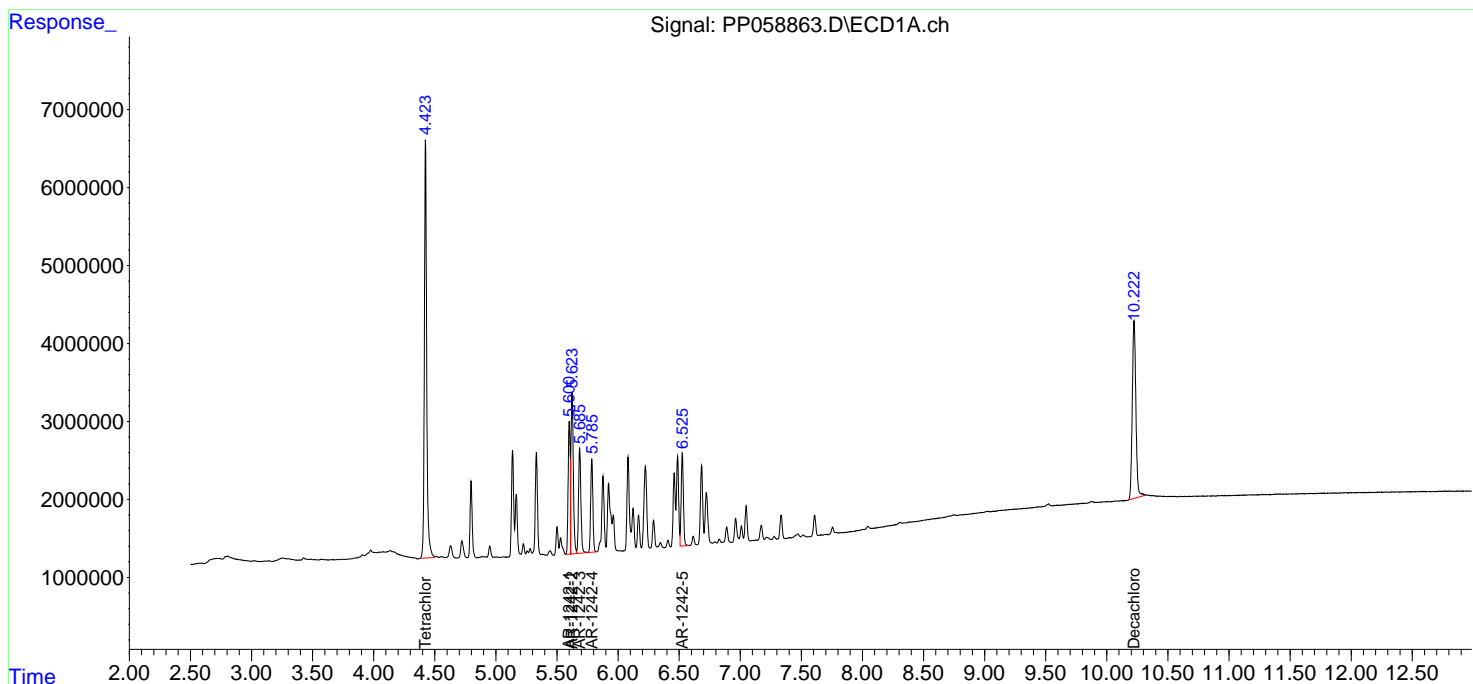
(f)=RT Delta > 1/2 Window (#)=Amounts differ by > 25% (m)=manual int.

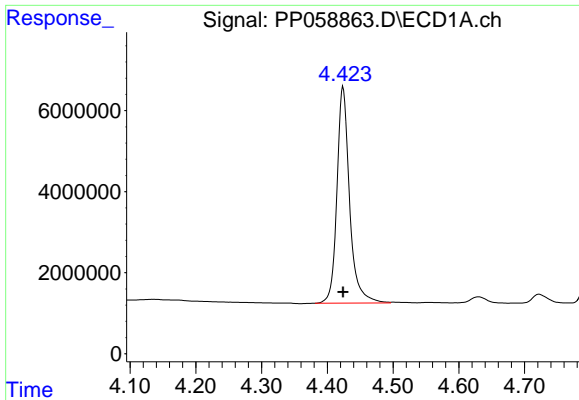
Data Path : Z:\pestpcbsrv\HPCHEM1\ECD_P\Data\PP072123\
 Data File : PP058863.D
 Signal(s) : Signal #1: ECD1A.ch Signal #2: ECD2B.ch
 Acq On : 21 Jul 2023 21:41
 Operator : YP\AJ
 Sample : AR1242ICV500
 Misc :
 ALS Vial : 32 Sample Multiplier: 1

Instrument :
 ECD_P
 ClientSampleId :
 ICVPP072123AR1242

Integration File signal 1: autoint1.e
 Integration File signal 2: autoint2.e
 Quant Time: Jul 22 01:39:50 2023
 Quant Method : Z:\pestpcbsrv\HPCHEM1\ECD_P\methods\PP072123.M
 Quant Title : GC EXTRACTABLES
 QLast Update : Sat Jul 22 01:38:14 2023
 Response via : Initial Calibration
 Integrator: ChemStation

Volume Inj. : 2 µl
 Signal #1 Phase : ZB-MR1 Signal #2 Phase: ZB-MR2
 Signal #1 Info : 30Mx0.32mmx 0.50µ Signal #2 Info : 30M x 0.32mm x 0.25µm

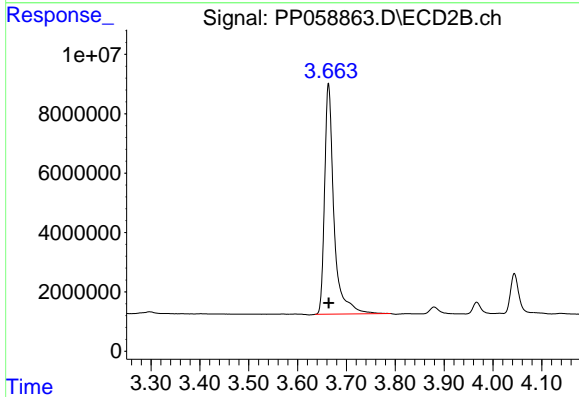




#1 Tetrachloro-m-xylene

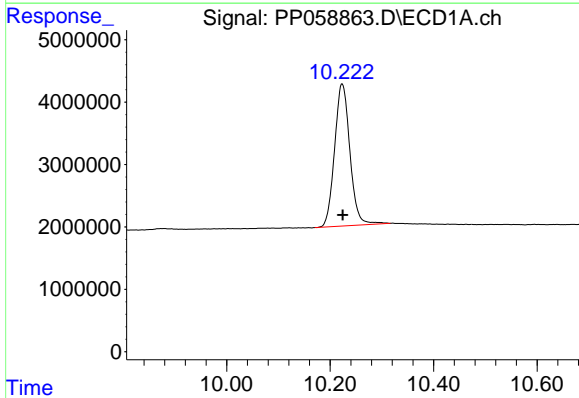
R.T.: 4.424 min
 Delta R.T.: 0.000 min
 Response: 71414350
 Conc: 51.53 ng/ml

Instrument :
 ECD_P
 ClientSampleId :
 ICVPP072123AR1242



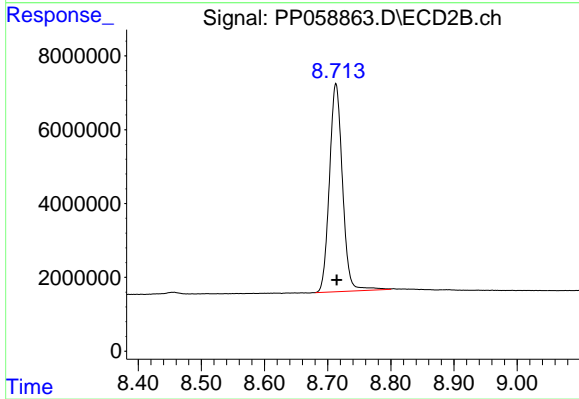
#1 Tetrachloro-m-xylene

R.T.: 3.663 min
 Delta R.T.: 0.000 min
 Response: 103966883
 Conc: 53.63 ng/ml



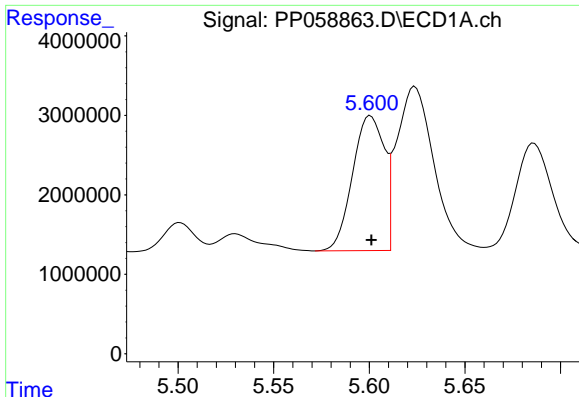
#2 Decachlorobiphenyl

R.T.: 10.223 min
 Delta R.T.: 0.000 min
 Response: 46756862
 Conc: 53.10 ng/ml



#2 Decachlorobiphenyl

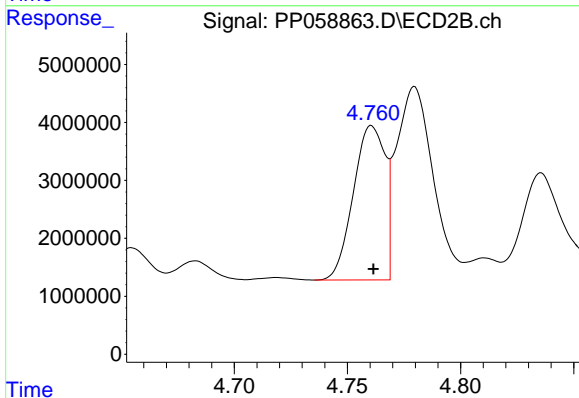
R.T.: 8.713 min
 Delta R.T.: -0.002 min
 Response: 81067806
 Conc: 55.34 ng/ml



#16 AR-1242-1

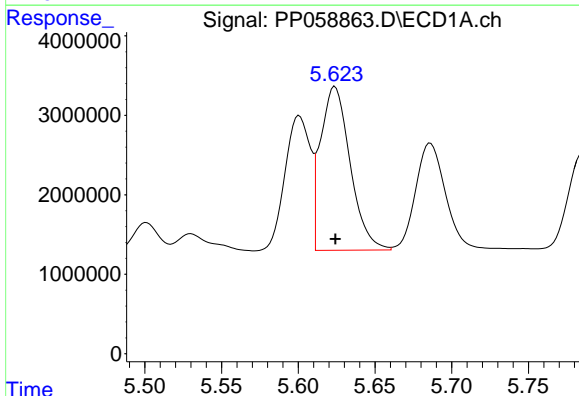
R.T.: 5.601 min
 Delta R.T.: 0.000 min
 Response: 19550188
 Conc: 517.18 ng/ml

Instrument :
 ECD_P
 ClientSampleId :
 ICVPP072123AR1242



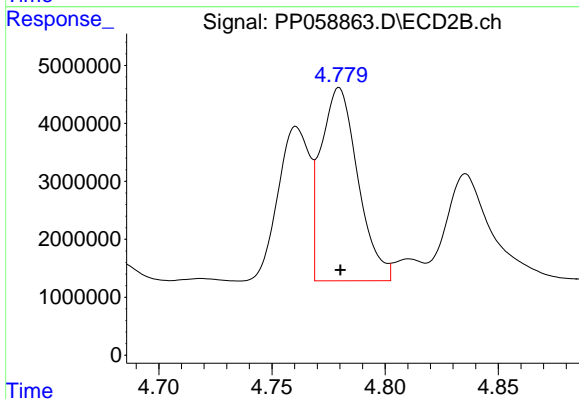
#16 AR-1242-1

R.T.: 4.761 min
 Delta R.T.: 0.000 min
 Response: 25928654
 Conc: 521.67 ng/ml



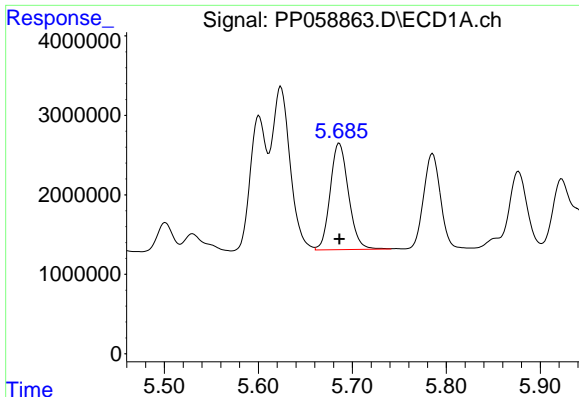
#17 AR-1242-2

R.T.: 5.624 min
 Delta R.T.: 0.000 min
 Response: 27771315
 Conc: 515.75 ng/ml



#17 AR-1242-2

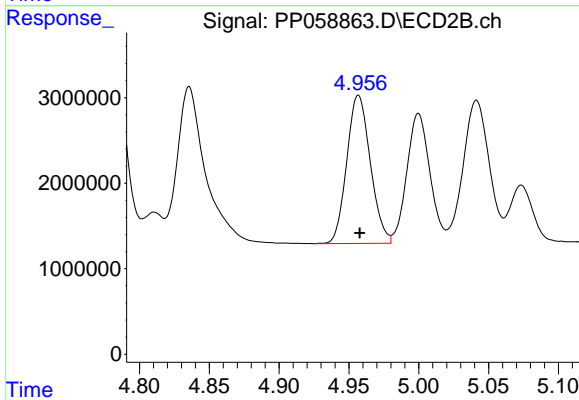
R.T.: 4.780 min
 Delta R.T.: 0.000 min
 Response: 37904454
 Conc: 531.73 ng/ml



#18 AR-1242-3

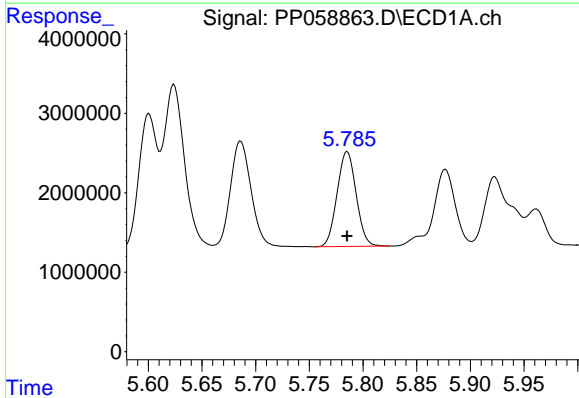
R.T.: 5.686 min
 Delta R.T.: 0.000 min
 Response: 18133338
 Conc: 523.58 ng/ml

Instrument :
 ECD_P
 ClientSampleId :
 ICVPP072123AR1242



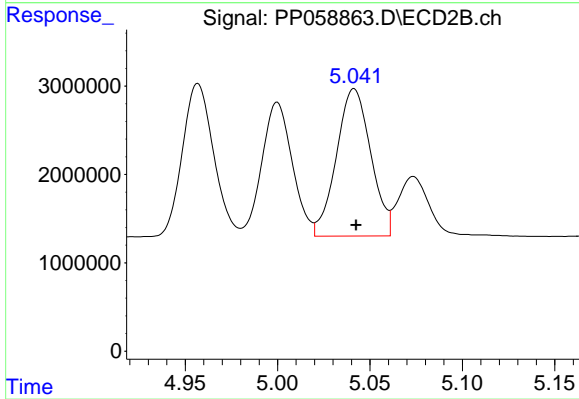
#18 AR-1242-3

R.T.: 4.957 min
 Delta R.T.: 0.000 min
 Response: 20390117
 Conc: 537.76 ng/ml



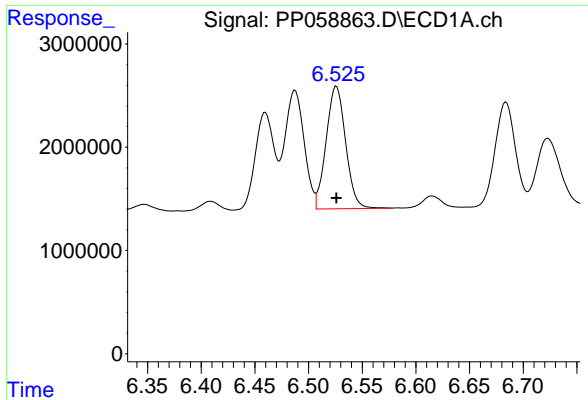
#19 AR-1242-4

R.T.: 5.785 min
 Delta R.T.: 0.000 min
 Response: 14781921
 Conc: 525.09 ng/ml



#19 AR-1242-4

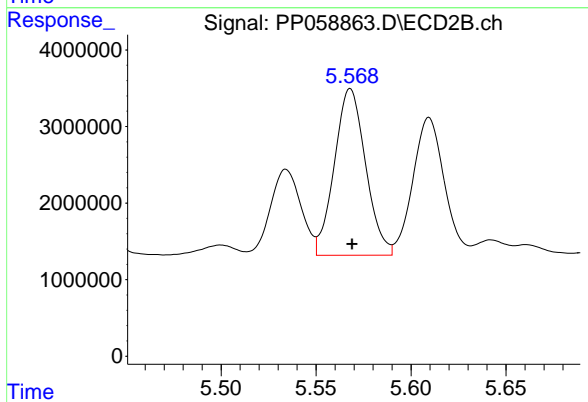
R.T.: 5.041 min
 Delta R.T.: 0.000 min
 Response: 21618778
 Conc: 537.07 ng/ml



#20 AR-1242-5

R.T.: 6.526 min
 Delta R.T.: 0.000 min
 Response: 15009411
 Conc: 528.90 ng/ml

Instrument :
 ECD_P
 ClientSampleId :
 ICVPP072123AR1242



#20 AR-1242-5

R.T.: 5.568 min
 Delta R.T.: 0.000 min
 Response: 24962832
 Conc: 518.55 ng/ml