

Data Path : Z:\pestpcbsrv\HPCHEM1\ECD\_P\Data\PP072221\  
 Data File : PP037554.D  
 Signal(s) : Signal #1: ECD1A.CH Signal #2: ECD2B.CH  
 Acq On : 22 Jul 2021 12:19  
 Operator : DD\AJ  
 Sample : AR1660CCC500  
 Misc :  
 ALS Vial : 3 Sample Multiplier: 1

Instrument :  
 ECD\_P  
 ClientSampleId :  
 AR1660CCC500

Integration File signal 1: autoint1.e  
 Integration File signal 2: autoint2.e  
 Quant Time: Jul 22 15:23:23 2021  
 Quant Method : Z:\pestpcbsrv\HPCHEM1\ECD\_P\methods\PP070621.M  
 Quant Title : GC EXTRACTABLES  
 QLast Update : Wed Jul 07 08:32:32 2021  
 Response via : Initial Calibration  
 Integrator: ChemStation 6890 Scale Mode: Small noise peaks clipped

Volume Inj. : 2 µl  
 Signal #1 Phase : ZB-MR2 Signal #2 Phase: ZB-MR2  
 Signal #1 Info : 30Mx0.32mmx 0.50µ Signal #2 Info : 30M x 0.32mm x 0.25µm

Compound	RT#1	RT#2	Resp#1	Resp#2	ng/ml	ng/ml
-----						
System Monitoring Compounds						
1) SA Tetrachlo...	4.957	3.947	2482632	1491541	54.624	54.507
2) SA Decachlor...	10.985	9.236	2453207	1301520	53.289	46.759
Target Compounds						
3) L1 AR-1016-1	6.276	5.196	877321	521460	504.872	504.606
4) L1 AR-1016-2	6.300	5.216	1248285	730170	499.296	509.984
5) L1 AR-1016-3	6.366	5.405	793541	401370	498.239	513.719
6) L1 AR-1016-4	6.473	5.459	661844	307018	501.934	508.653
7) L1 AR-1016-5	6.787	5.687	642622	380194	507.998	492.356
31) L7 AR-1260-1	7.963	6.783	1023185	655484	464.781	474.366
32) L7 AR-1260-2	8.228	6.982	1245408	780708	447.703	464.725
33) L7 AR-1260-3	8.594	7.135	942062	744706	466.095	434.635
34) L7 AR-1260-4	8.825	7.619	1116651	611119	453.957	449.508
35) L7 AR-1260-5	9.153	7.868	2181268	1417558	472.709	439.495

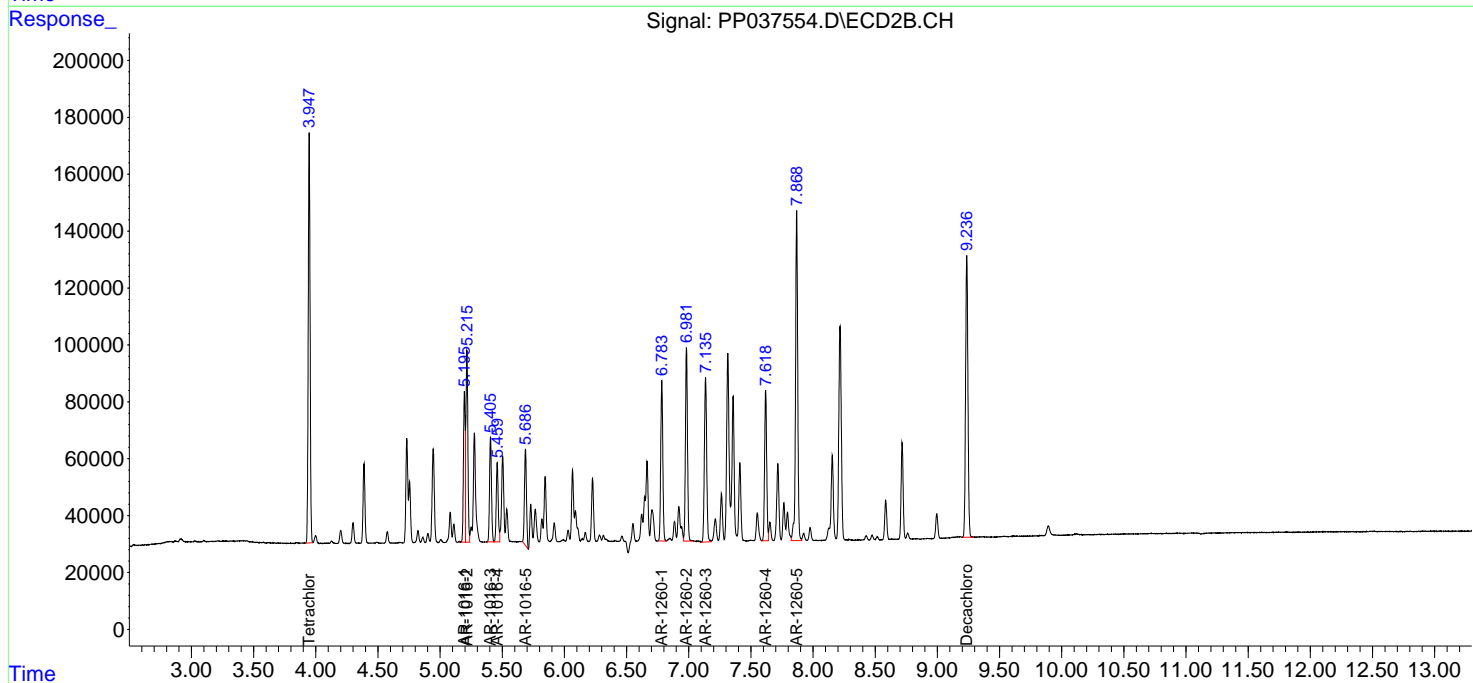
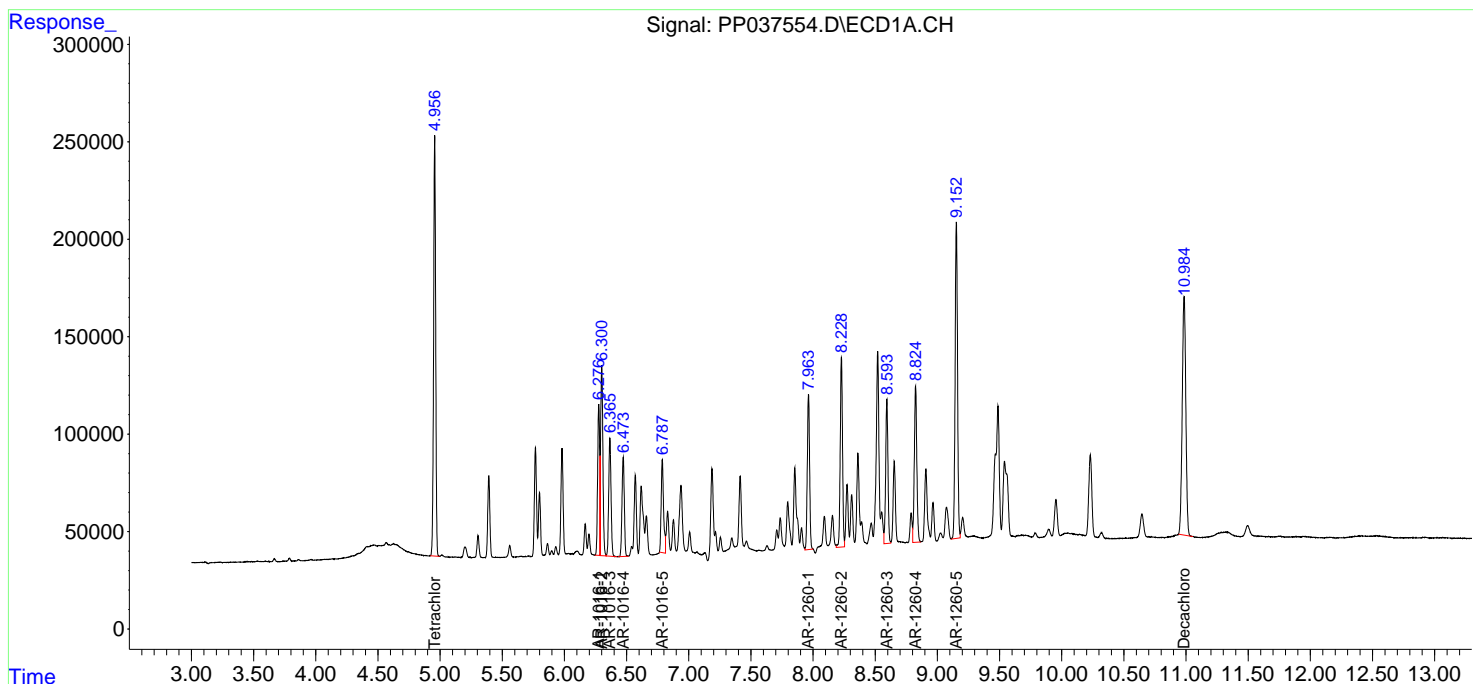
(f)=RT Delta > 1/2 Window (#)=Amounts differ by > 25% (m)=manual int.

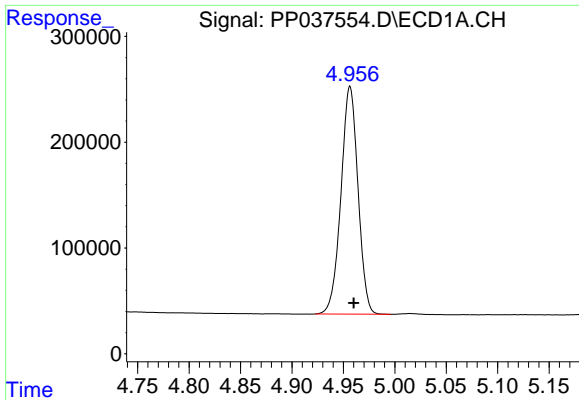
Data Path : Z:\pestpcbsrv\HPCHEM1\ECD\_P\Data\PP072221\  
 Data File : PP037554.D  
 Signal(s) : Signal #1: ECD1A.CH Signal #2: ECD2B.CH  
 Acq On : 22 Jul 2021 12:19  
 Operator : DD\AJ  
 Sample : AR1660CCC500  
 Misc :  
 ALS Vial : 3 Sample Multiplier: 1

Instrument :  
 ECD\_P  
 Client Sampled :  
 AR1660CCC500

Integration File signal 1: autoint1.e  
 Integration File signal 2: autoint2.e  
 Quant Time: Jul 22 15:23:23 2021  
 Quant Method : Z:\pestpcbsrv\HPCHEM1\ECD\_P\methods\PP070621.M  
 Quant Title : GC EXTRACTABLES  
 QLast Update : Wed Jul 07 08:32:32 2021  
 Response via : Initial Calibration  
 Integrator: ChemStation 6890 Scale Mode: Small noise peaks clipped

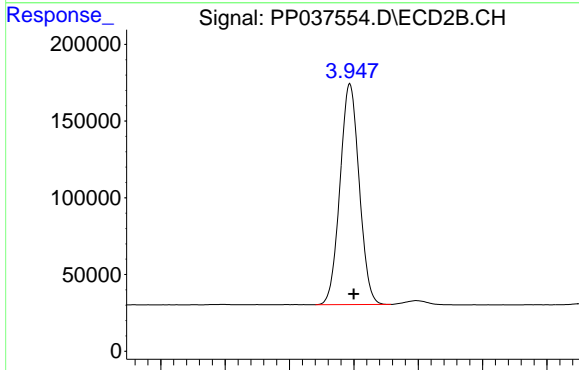
Volume Inj. : 2 µl  
 Signal #1 Phase : ZB-MR1 Signal #2 Phase: ZB-MR2  
 Signal #1 Info : 30Mx0.32mmx 0.50µ Signal #2 Info : 30M x 0.32mm x 0.25µm



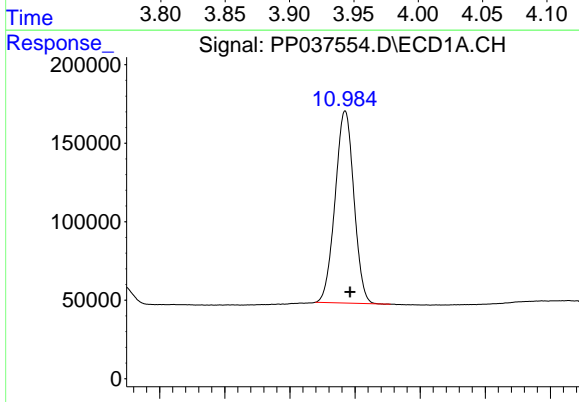


#1 Tetrachloro-m-xylene  
 R.T.: 4.957 min  
 Delta R.T.: -0.003 min  
 Response: 2482632  
 Conc: 54.62 ng/ml

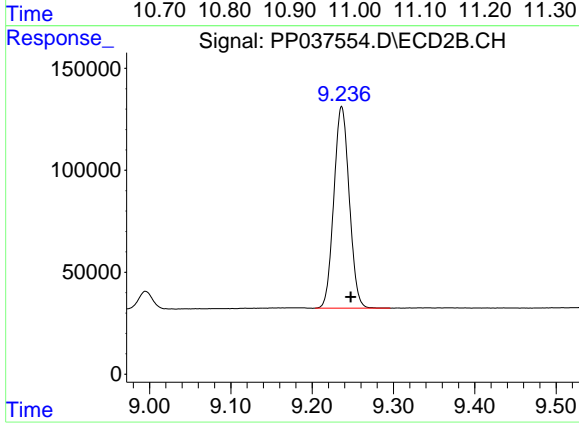
Instrument :  
 ECD\_P  
 ClientSampleId :  
 AR1660CCC500



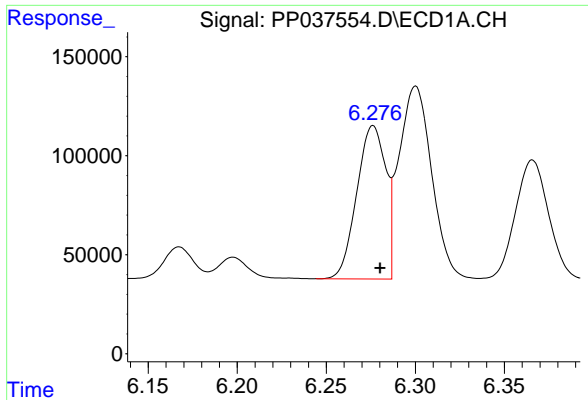
#1 Tetrachloro-m-xylene  
 R.T.: 3.947 min  
 Delta R.T.: -0.003 min  
 Response: 1491541  
 Conc: 54.51 ng/ml



#2 Decachlorobiphenyl  
 R.T.: 10.985 min  
 Delta R.T.: -0.007 min  
 Response: 2453207  
 Conc: 53.29 ng/ml



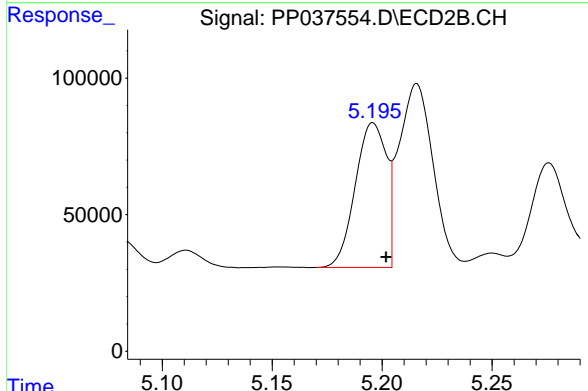
#2 Decachlorobiphenyl  
 R.T.: 9.236 min  
 Delta R.T.: -0.011 min  
 Response: 1301520  
 Conc: 46.76 ng/ml



#3 AR-1016-1

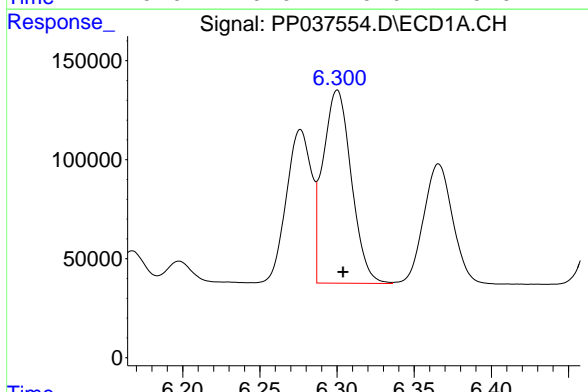
R.T.: 6.276 min  
 Delta R.T.: -0.004 min  
 Response: 877321  
 Conc: 504.87 ng/ml

**Instrument :**  
 ECD\_P  
**ClientSampleId :**  
 AR1660CCC500



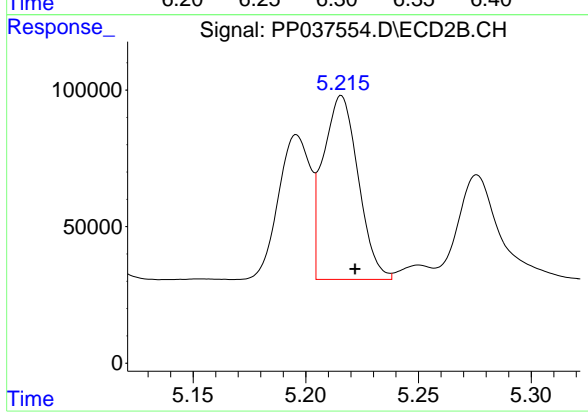
#3 AR-1016-1

R.T.: 5.196 min  
 Delta R.T.: -0.006 min  
 Response: 521460  
 Conc: 504.61 ng/ml



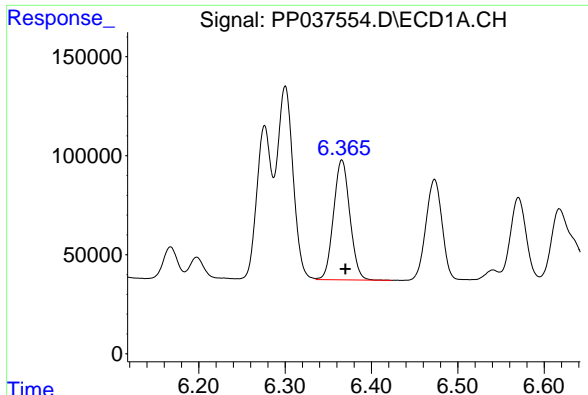
#4 AR-1016-2

R.T.: 6.300 min  
 Delta R.T.: -0.004 min  
 Response: 1248285  
 Conc: 499.30 ng/ml



#4 AR-1016-2

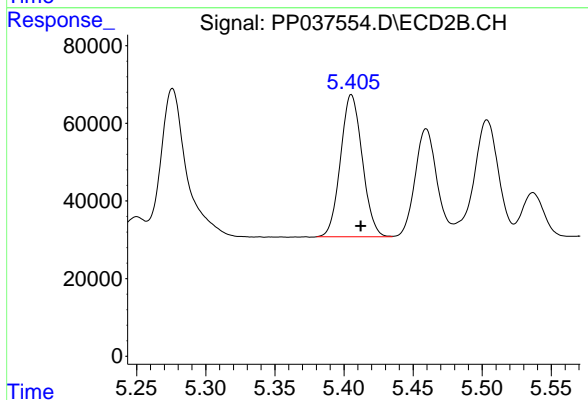
R.T.: 5.216 min  
 Delta R.T.: -0.006 min  
 Response: 730170  
 Conc: 509.98 ng/ml



#5 AR-1016-3

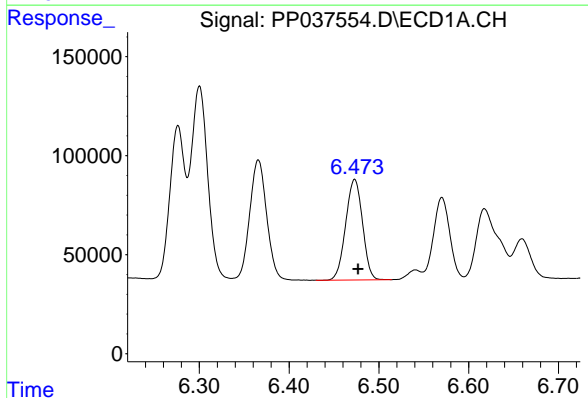
R.T.: 6.366 min  
 Delta R.T.: -0.004 min  
 Response: 793541  
 Conc: 498.24 ng/ml

Instrument :  
 ECD\_P  
 ClientSampleId :  
 AR1660CCC500



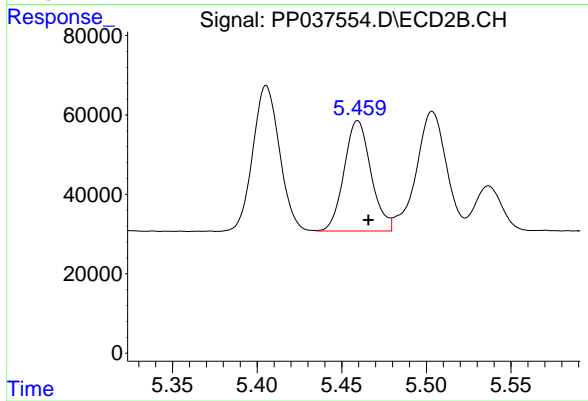
#5 AR-1016-3

R.T.: 5.405 min  
 Delta R.T.: -0.007 min  
 Response: 401370  
 Conc: 513.72 ng/ml



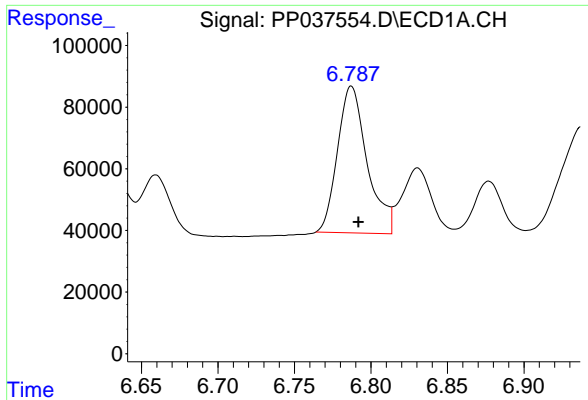
#6 AR-1016-4

R.T.: 6.473 min  
 Delta R.T.: -0.004 min  
 Response: 661844  
 Conc: 501.93 ng/ml



#6 AR-1016-4

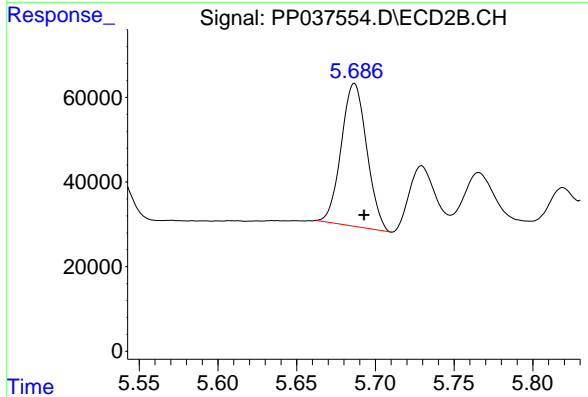
R.T.: 5.459 min  
 Delta R.T.: -0.006 min  
 Response: 307018  
 Conc: 508.65 ng/ml



#7 AR-1016-5

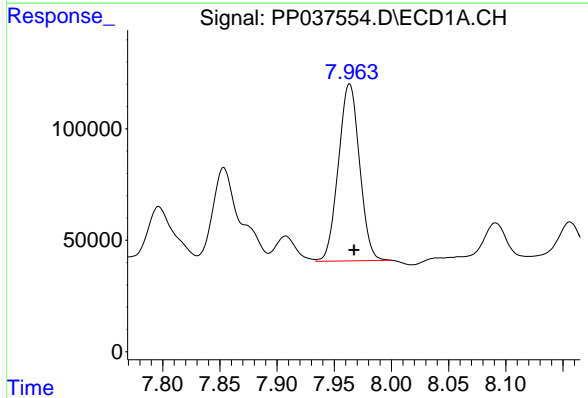
R.T.: 6.787 min  
 Delta R.T.: -0.005 min  
 Response: 642622  
 Conc: 508.00 ng/ml

Instrument :  
 ECD\_P  
 ClientSampleId :  
 AR1660CCC500



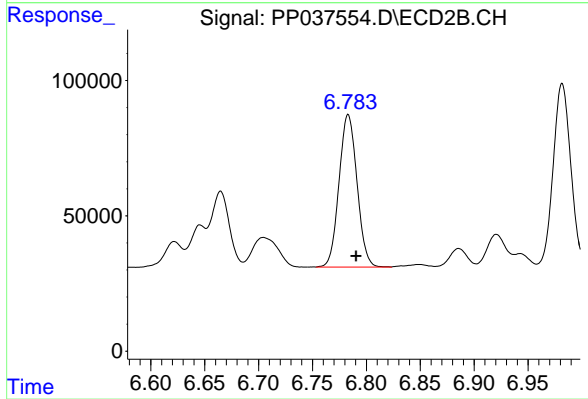
#7 AR-1016-5

R.T.: 5.687 min  
 Delta R.T.: -0.006 min  
 Response: 380194  
 Conc: 492.36 ng/ml



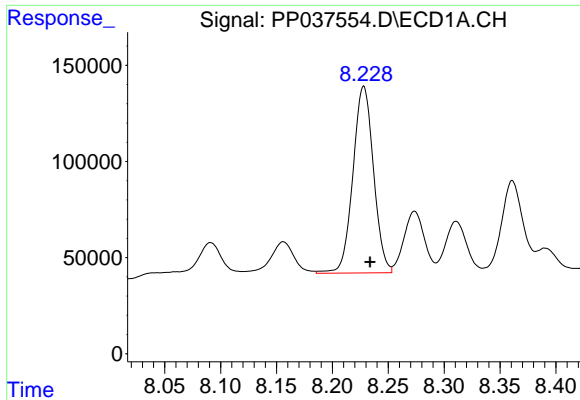
#31 AR-1260-1

R.T.: 7.963 min  
 Delta R.T.: -0.004 min  
 Response: 1023185  
 Conc: 464.78 ng/ml



#31 AR-1260-1

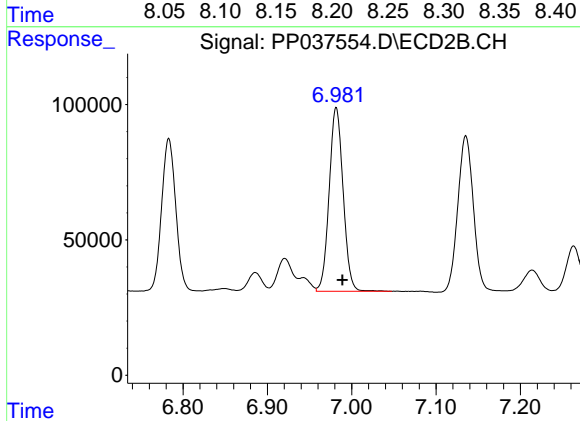
R.T.: 6.783 min  
 Delta R.T.: -0.007 min  
 Response: 655484  
 Conc: 474.37 ng/ml



#32 AR-1260-2

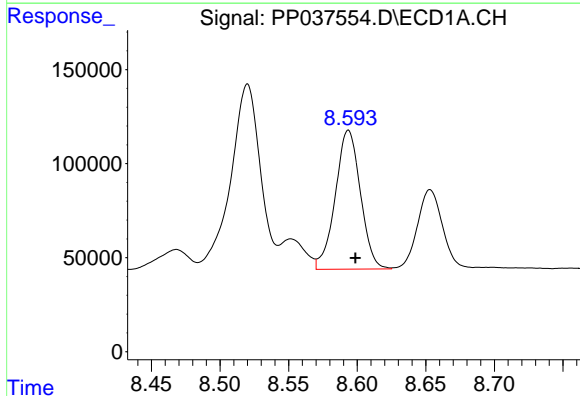
R.T.: 8.228 min  
Delta R.T.: -0.006 min  
Response: 1245408  
Conc: 447.70 ng/ml

Instrument :  
ECD\_P  
ClientSampleId :  
AR1660CCC500



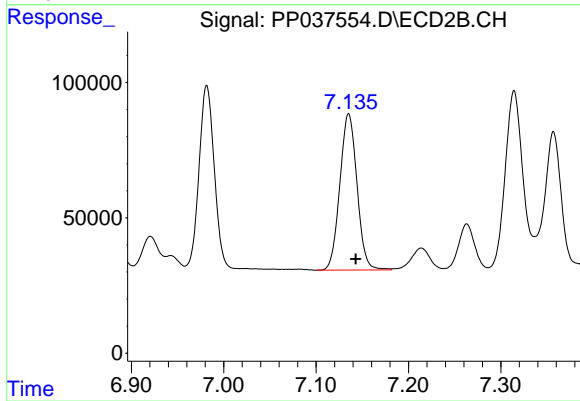
#32 AR-1260-2

R.T.: 6.982 min  
Delta R.T.: -0.007 min  
Response: 780708  
Conc: 464.73 ng/ml



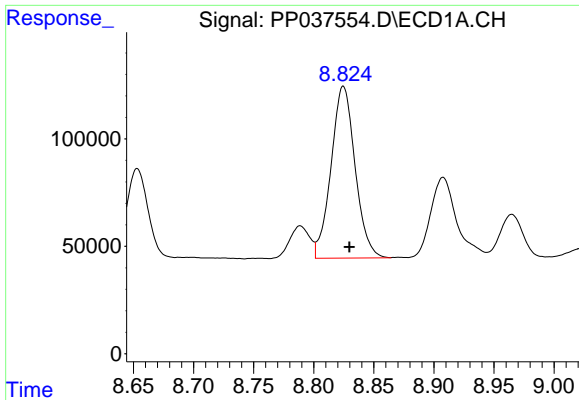
#33 AR-1260-3

R.T.: 8.594 min  
Delta R.T.: -0.005 min  
Response: 942062  
Conc: 466.10 ng/ml



#33 AR-1260-3

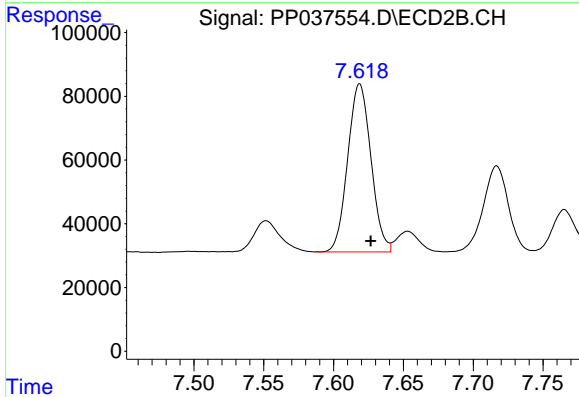
R.T.: 7.135 min  
Delta R.T.: -0.007 min  
Response: 744706  
Conc: 434.64 ng/ml



#34 AR-1260-4

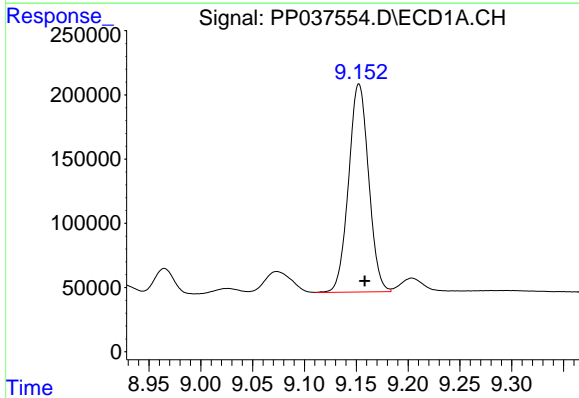
R.T.: 8.825 min  
 Delta R.T.: -0.005 min  
 Response: 1116651  
 Conc: 453.96 ng/ml

Instrument :  
 ECD\_P  
 ClientSampled :  
 AR1660CCC500



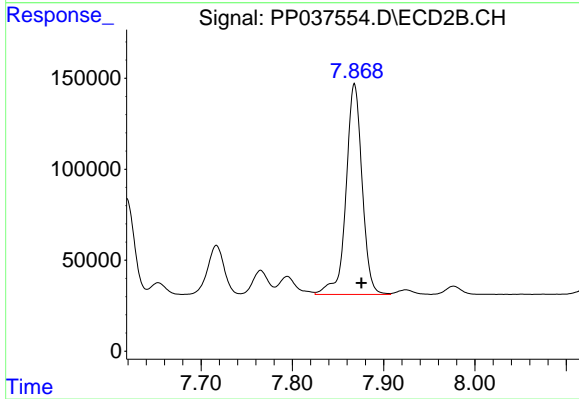
#34 AR-1260-4

R.T.: 7.619 min  
 Delta R.T.: -0.008 min  
 Response: 611119  
 Conc: 449.51 ng/ml



#35 AR-1260-5

R.T.: 9.153 min  
 Delta R.T.: -0.006 min  
 Response: 2181268  
 Conc: 472.71 ng/ml



#35 AR-1260-5

R.T.: 7.868 min  
 Delta R.T.: -0.008 min  
 Response: 1417558  
 Conc: 439.49 ng/ml