

Data Path : Z:\pestpcbsrv\HPCHEM1\ECD_P\Data\PP072221\
 Data File : PP037574.D
 Signal(s) : Signal #1: ECD1A.CH Signal #2: ECD2B.CH
 Acq On : 22 Jul 2021 19:08
 Operator : DD\AJ
 Sample : M3117-09
 Misc :
 ALS Vial : 23 Sample Multiplier: 1

Instrument :
 ECD_P
 ClientSampleId :
 NJ-CLEAN-9

Integration File signal 1: autoint1.e
 Integration File signal 2: autoint2.e
 Quant Time: Jul 23 02:54:03 2021
 Quant Method : Z:\pestpcbsrv\HPCHEM1\ECD_P\methods\PP070621.M
 Quant Title : GC EXTRACTABLES
 QLast Update : Wed Jul 07 08:32:32 2021
 Response via : Initial Calibration
 Integrator: ChemStation 6890 Scale Mode: Small noise peaks clipped

Volume Inj. : 2 µl
 Signal #1 Phase : ZB-MR1 Signal #2 Phase: ZB-MR2
 Signal #1 Info : 30Mx0.32mmx 0.50µ Signal #2 Info : 30M x 0.32mm x 0.25µm

Compound	RT#1	RT#2	Resp#1	Resp#2	ng/ml	ng/ml

System Monitoring Compounds						
1) SA Tetrachlo...	4.956	3.947	891755	522419	19.621	19.091
2) SA Decachlor...	10.984	9.237	783742	388540	17.025	13.959

Target Compounds

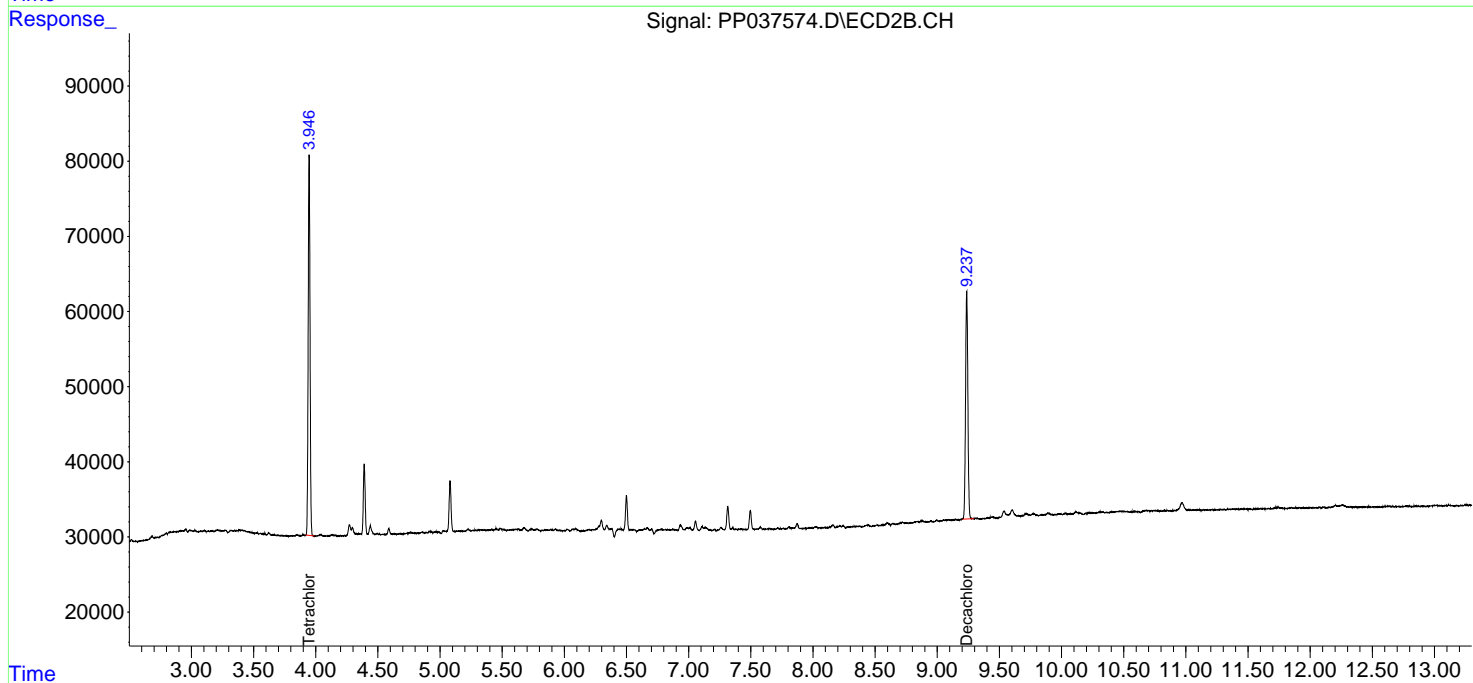
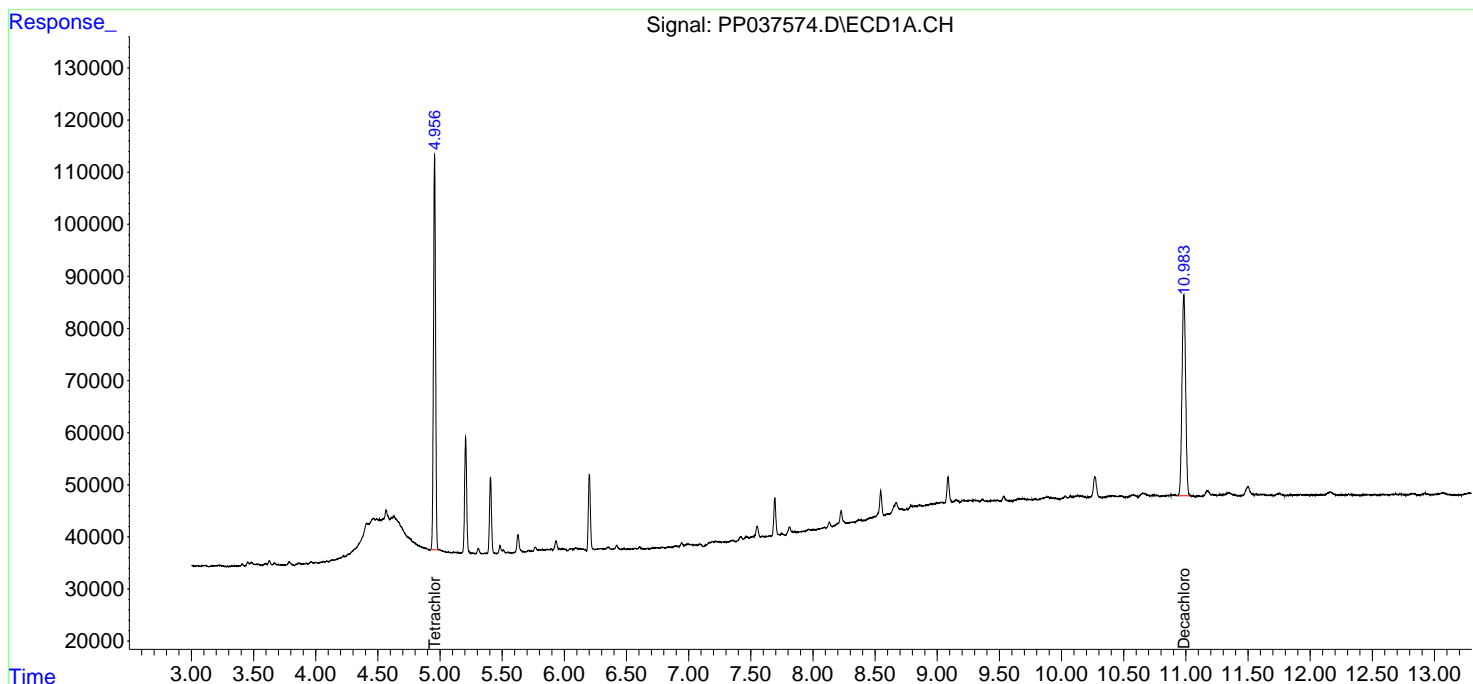
(f)=RT Delta > 1/2 Window (#)=Amounts differ by > 25% (m)=manual int.

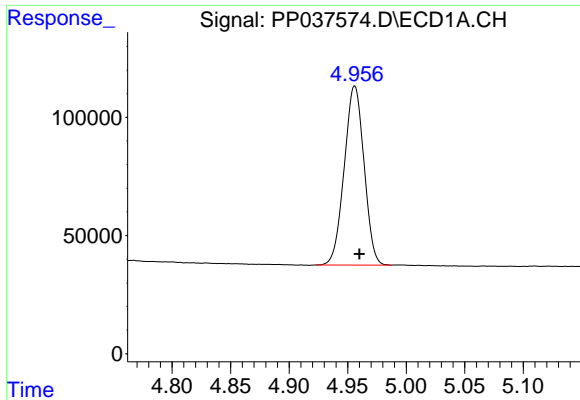
Data Path : Z:\pestpcbsrv\HPCHEM1\ECD_P\Data\PP072221\
 Data File : PP037574.D
 Signal(s) : Signal #1: ECD1A.CH Signal #2: ECD2B.CH
 Acq On : 22 Jul 2021 19:08
 Operator : DD\AJ
 Sample : M3117-09
 Misc :
 ALS Vial : 23 Sample Multiplier: 1

Instrument :
 ECD_P
 ClientSampleId :
 NJ-CLEAN-9

Integration File signal 1: autoint1.e
 Integration File signal 2: autoint2.e
 Quant Time: Jul 23 02:54:03 2021
 Quant Method : Z:\pestpcbsrv\HPCHEM1\ECD_P\methods\PP070621.M
 Quant Title : GC EXTRACTABLES
 QLast Update : Wed Jul 07 08:32:32 2021
 Response via : Initial Calibration
 Integrator: ChemStation 6890 Scale Mode: Small noise peaks clipped

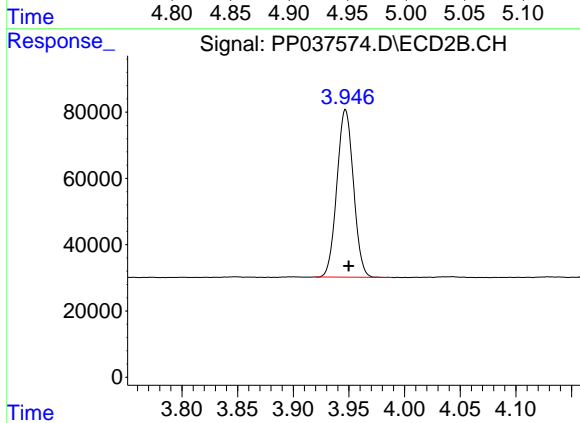
Volume Inj. : 2 µl
 Signal #1 Phase : ZB-MR1 Signal #2 Phase: ZB-MR2
 Signal #1 Info : 30Mx0.32mmx 0.50µ Signal #2 Info : 30M x 0.32mm x 0.25µm



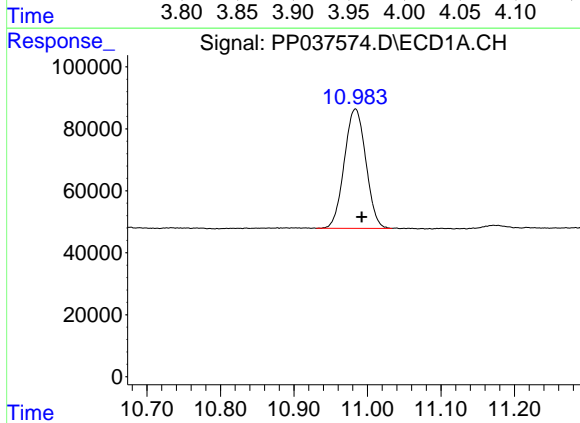


#1 Tetrachloro-m-xylene
 R.T.: 4.956 min
 Delta R.T.: -0.004 min
 Response: 891755
 Conc: 19.62 ng/ml

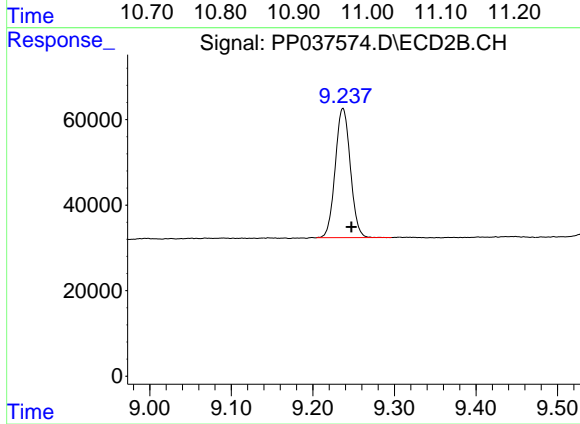
Instrument :
 ECD_P
 ClientSampled :
 NJ-CLEAN-9



#1 Tetrachloro-m-xylene
 R.T.: 3.947 min
 Delta R.T.: -0.003 min
 Response: 522419
 Conc: 19.09 ng/ml



#2 Decachlorobiphenyl
 R.T.: 10.984 min
 Delta R.T.: -0.009 min
 Response: 783742
 Conc: 17.02 ng/ml



#2 Decachlorobiphenyl
 R.T.: 9.237 min
 Delta R.T.: -0.010 min
 Response: 388540
 Conc: 13.96 ng/ml