

Data Path : Z:\pestpcbsrv\HPCHEM1\ECD_P\Data\PP072225\
 Data File : PP074037.D
 Signal(s) : Signal #1: ECD1A.ch Signal #2: ECD2B.ch
 Acq On : 22 Jul 2025 14:38
 Operator : YP\AJ
 Sample : Q2649-21
 Misc :
 ALS Vial : 16 Sample Multiplier: 1

Instrument :
 ECD_P
 ClientSampleId :

Integration File signal 1: autoint1.e
 Integration File signal 2: autoint2.e
 Quant Time: Jul 23 01:55:46 2025
 Quant Method : Z:\pestpcbsrv\HPCHEM1\ECD_P\methods\PP070825.M
 Quant Title : GC EXTRACTABLES
 QLast Update : Tue Jul 08 08:35:32 2025
 Response via : Initial Calibration
 Integrator: ChemStation

Volume Inj. : 2 µl
 Signal #1 Phase : ZB-MR1 Signal #2 Phase: ZB-MR2
 Signal #1 Info : 30Mx0.32mmx 0.50µ Signal #2 Info : 30M x 0.32mm x 0.25µm

Compound	RT#1	RT#2	Resp#1	Resp#2	ng/ml	ng/ml

System Monitoring Compounds						
1) SA Tetrachlo...	4.519f	3.772	34343	30560764	0.025	16.588 #
2) SA Decachlor...	10.232f	8.765	83631	24228386	0.077	18.311 #
Target Compounds						
3) L1 AR-1016-1	5.659	4.852	178790	70355	3.763	1.032 #
4) L1 AR-1016-2	5.659	4.875	178790	58351	2.511	0.573 #
5) L1 AR-1016-3	5.725	5.045	115307	85800	2.641	1.586 #
6) L1 AR-1016-4	5.825	5.098	157995	69762	4.395	1.590 #
7) L1 AR-1016-5	6.114	5.309	104745	319841	3.343	5.860 #
8) L2 AR-1221-1	4.713	3.985	19001	57963	1.064	2.143 #
9) L2 AR-1221-2	4.765	4.072	110998	982315	8.219	48.247 #
10) L2 AR-1221-3	4.881	4.150	143029	67746	3.438	1.102 #
11) L3 AR-1232-1	4.881	4.150	143029	67746	4.381	1.453 #
12) L3 AR-1232-2	5.389	4.875	89439	58351	5.502	1.224 #
13) L3 AR-1232-3	5.659	5.045	178790	85800	5.419	3.428 #
14) L3 AR-1232-4	5.825	5.148	157995	93321	9.607	4.309 #
15) L3 AR-1232-5	5.923	5.309	46895	319841	4.436	14.175 #
16) L4 AR-1242-1	5.659	4.852	178790	70355	4.682	1.218 #
17) L4 AR-1242-2	5.659	4.875	178790	58351	2.986	0.675 #
18) L4 AR-1242-3	5.725	5.045	115307	85800	3.149	1.867 #
19) L4 AR-1242-4	5.825	5.148	157995	93321	4.916	2.108 #
20) L4 AR-1242-5	6.560	5.672	231903	83520	7.084	1.512 #
21) L5 AR-1248-1	5.659	4.852	178790	70355	5.792	1.567 #
22) L5 AR-1248-2	5.923	5.098	46895	69762	1.175	1.134
23) L5 AR-1248-3	6.114	5.148	104745	93321	2.359	1.457 #
24) L5 AR-1248-4	6.519	5.309	298980	319841	5.428	4.243
25) L5 AR-1248-5	6.560	5.696	231903	220928	4.311	2.962 #
26) L6 AR-1254-1	6.471	5.672	139590	83520	2.605	0.720 #
27) L6 AR-1254-2	6.698	5.807	201419	260088	2.418	2.585
28) L6 AR-1254-3	7.101f	6.200	594992	274539	6.736	1.778 #
29) L6 AR-1254-4	7.353	6.440	492255	189854	6.257	2.008 #
30) L6 AR-1254-5	7.751	6.858	189441	103357	2.571	0.775 #
31) L7 AR-1260-1	7.248	6.322	346843	78141	5.883	0.801 #
32) L7 AR-1260-2	7.495	6.534	355189	54033	3.706	0.440 #
33) L7 AR-1260-3	7.855	6.675	344311	179032	4.712	1.636 #
34) L7 AR-1260-4	8.052	7.137	148554	226465	2.275	2.533
35) L7 AR-1260-5	8.368	7.383	234687	355436	1.556	1.582
36) L8 AR-1262-1	8.052	6.909	148554	18496	1.707	0.125 #
37) L8 AR-1262-2	8.368	7.137	234687	226465	1.185	1.772 #
38) L8 AR-1262-3	8.683	7.687	110662	579997	0.880	5.087 #
39) L8 AR-1262-4	8.773	7.737	104725	130584	1.123	0.710 #
40) L8 AR-1262-5	9.442	8.191f	395058	11107	6.232	0.132 #
41) L9 AR-1268-1	8.683	7.687	110662	579997	0.496	1.887 #

Data Path : Z:\pestpcbsrv\HPCHEM1\ECD_P\Data\PP072225\
 Data File : PP074037.D
 Signal(s) : Signal #1: ECD1A.ch Signal #2: ECD2B.ch
 Acq On : 22 Jul 2025 14:38
 Operator : YP\AJ
 Sample : Q2649-21
 Misc :
 ALS Vial : 16 Sample Multiplier: 1

Instrument :
 ECD_P
 ClientSampleId :

Integration File signal 1: autoint1.e
 Integration File signal 2: autoint2.e
 Quant Time: Jul 23 01:55:46 2025
 Quant Method : Z:\pestpcbsrv\HPCHEM1\ECD_P\methods\PP070825.M
 Quant Title : GC EXTRACTABLES
 QLast Update : Tue Jul 08 08:35:32 2025
 Response via : Initial Calibration
 Integrator: ChemStation

Volume Inj. : 2 µl
 Signal #1 Phase : ZB-MR1 Signal #2 Phase: ZB-MR2
 Signal #1 Info : 30Mx0.32mmx 0.50µ Signal #2 Info : 30M x 0.32mm x 0.25µm

	Compound	RT#1	RT#2	Resp#1	Resp#2	ng/ml	ng/ml
42)	L9 AR-1268-2	8.795	7.737	84769	130584	0.445	0.491
43)	L9 AR-1268-3	9.009	7.926	125173	283585	0.756	1.257 #
44)	L9 AR-1268-4	9.442	8.191f	395058	11107	5.681	0.119 #
45)	L9 AR-1268-5	9.857	8.518	76405	259291	0.166	0.421 #

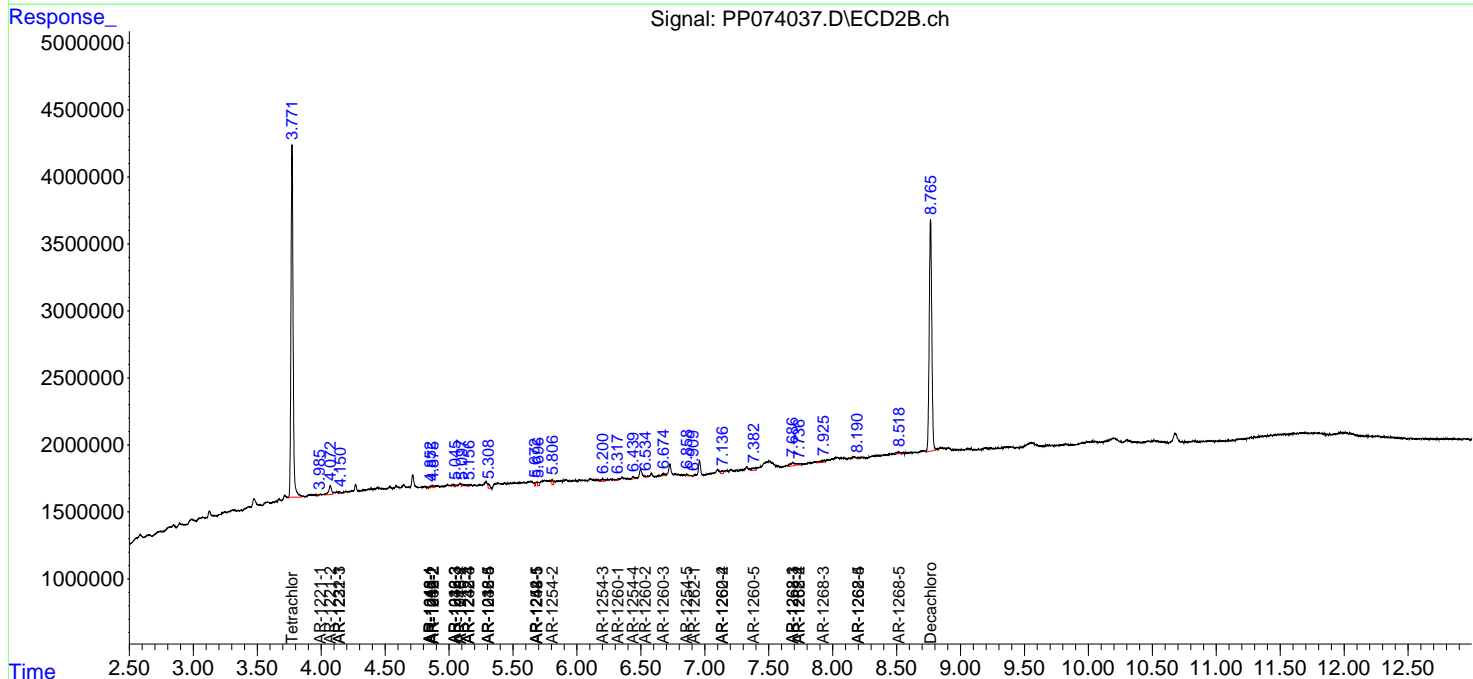
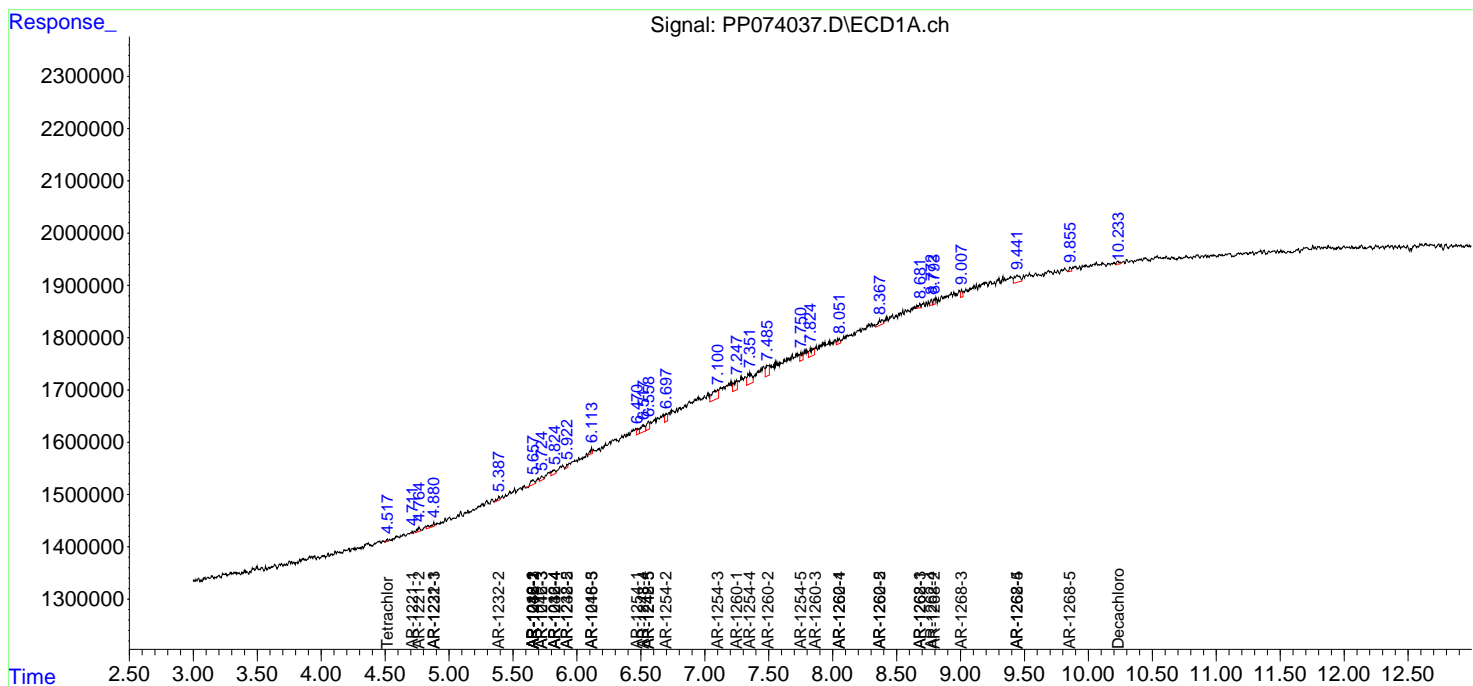
(f)=RT Delta > 1/2 Window (#)=Amounts differ by > 25% (m)=manual int.

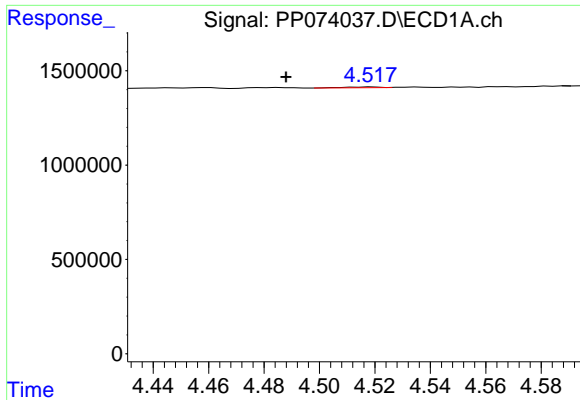
Data Path : Z:\pestpcbsrv\HPCHEM1\ECD_P\Data\PP072225\
 Data File : PP074037.D
 Signal(s) : Signal #1: ECD1A.ch Signal #2: ECD2B.ch
 Acq On : 22 Jul 2025 14:38
 Operator : YP\AJ
 Sample : Q2649-21
 Misc :
 ALS Vial : 16 Sample Multiplier: 1

Instrument :
 ECD_P
 ClientSampleId :

Integration File signal 1: autoint1.e
 Integration File signal 2: autoint2.e
 Quant Time: Jul 23 01:55:46 2025
 Quant Method : Z:\pestpcbsrv\HPCHEM1\ECD_P\methods\PP070825.M
 Quant Title : GC EXTRACTABLES
 QLast Update : Tue Jul 08 08:35:32 2025
 Response via : Initial Calibration
 Integrator: ChemStation

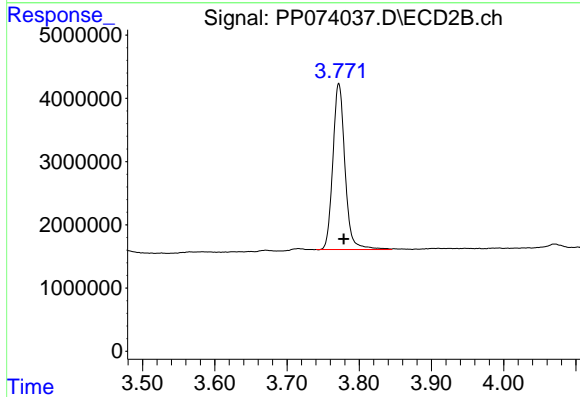
Volume Inj. : 2 µl
 Signal #1 Phase : ZB-MR1 Signal #2 Phase: ZB-MR2
 Signal #1 Info : 30Mx0.32mmx 0.50µ Signal #2 Info : 30M x 0.32mm x 0.25µm



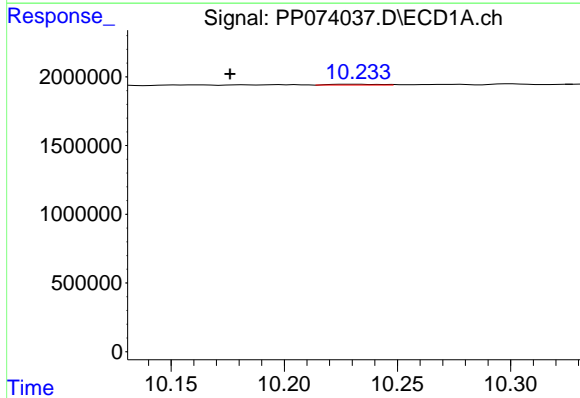


#1 Tetrachloro-m-xylene
 R.T.: 4.519 min
 Delta R.T.: 0.031 min
 Response: 34343
 Conc: 0.03 ng/ml

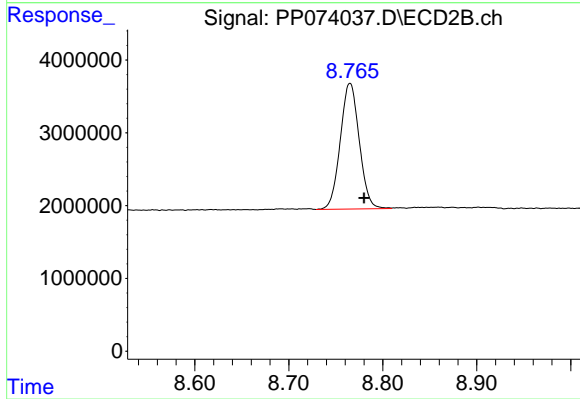
Instrument :
 ECD_P
 ClientSampleId :



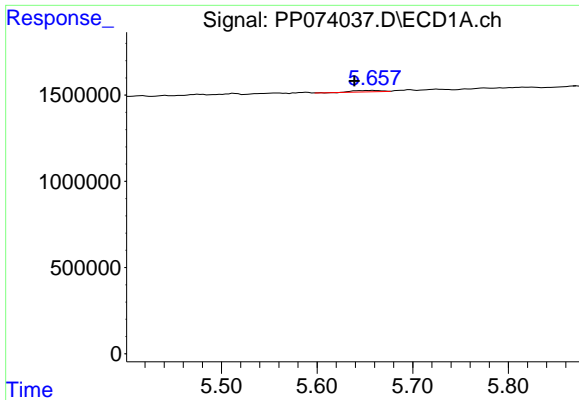
#1 Tetrachloro-m-xylene
 R.T.: 3.772 min
 Delta R.T.: -0.007 min
 Response: 30560764
 Conc: 16.59 ng/ml



#2 Decachlorobiphenyl
 R.T.: 10.232 min
 Delta R.T.: 0.056 min
 Response: 83631
 Conc: 0.08 ng/ml



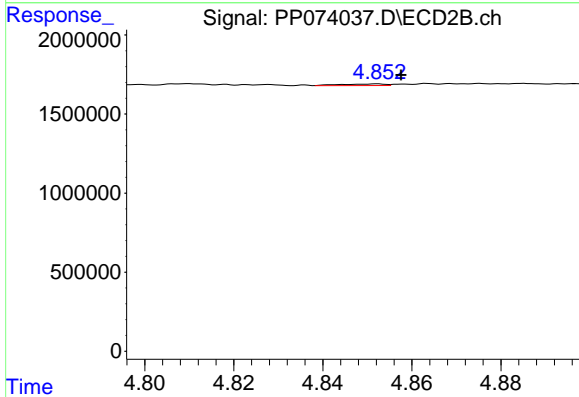
#2 Decachlorobiphenyl
 R.T.: 8.765 min
 Delta R.T.: -0.015 min
 Response: 24228386
 Conc: 18.31 ng/ml



#3 AR-1016-1

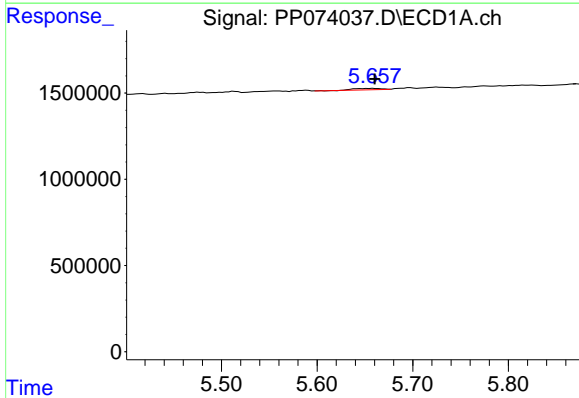
R.T.: 5.659 min
 Delta R.T.: 0.020 min
 Response: 178790
 Conc: 3.76 ng/ml

Instrument :
 ECD_P
 ClientSampleId :



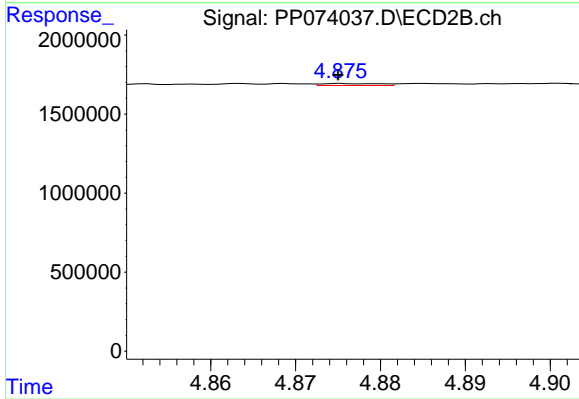
#3 AR-1016-1

R.T.: 4.852 min
 Delta R.T.: -0.005 min
 Response: 70355
 Conc: 1.03 ng/ml



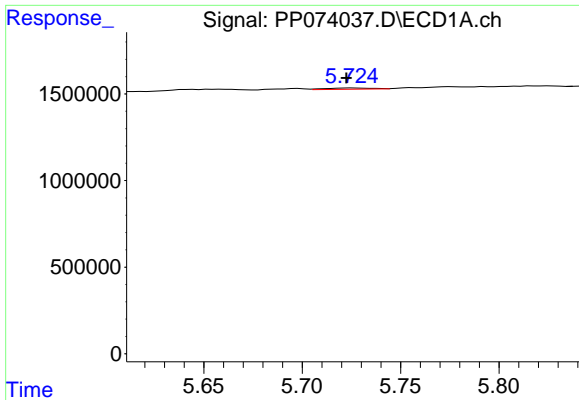
#4 AR-1016-2

R.T.: 5.659 min
 Delta R.T.: -0.002 min
 Response: 178790
 Conc: 2.51 ng/ml



#4 AR-1016-2

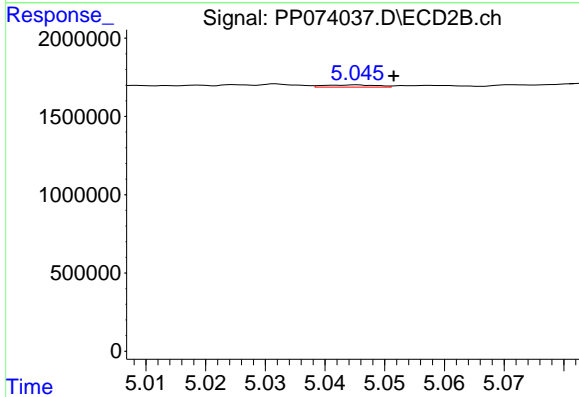
R.T.: 4.875 min
 Delta R.T.: 0.000 min
 Response: 58351
 Conc: 0.57 ng/ml



#5 AR-1016-3

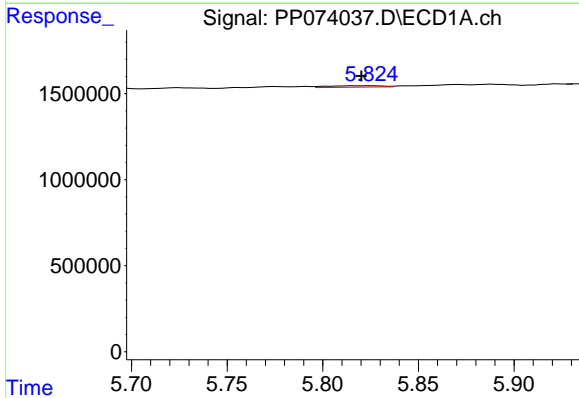
R.T.: 5.725 min
 Delta R.T.: 0.003 min
 Response: 115307
 Conc: 2.64 ng/ml

Instrument :
 ECD_P
 ClientSampleId :



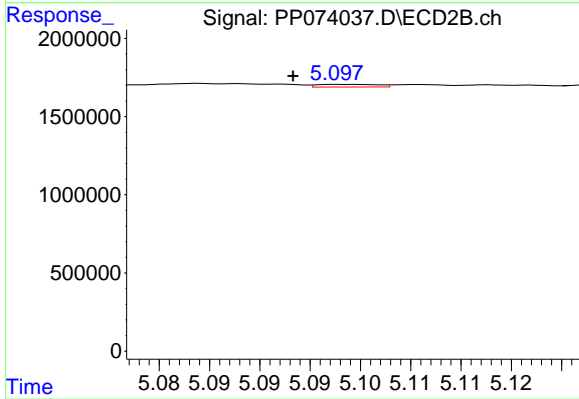
#5 AR-1016-3

R.T.: 5.045 min
 Delta R.T.: -0.006 min
 Response: 85800
 Conc: 1.59 ng/ml



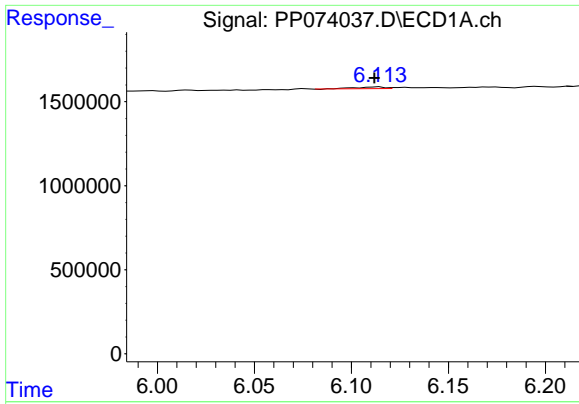
#6 AR-1016-4

R.T.: 5.825 min
 Delta R.T.: 0.005 min
 Response: 157995
 Conc: 4.40 ng/ml



#6 AR-1016-4

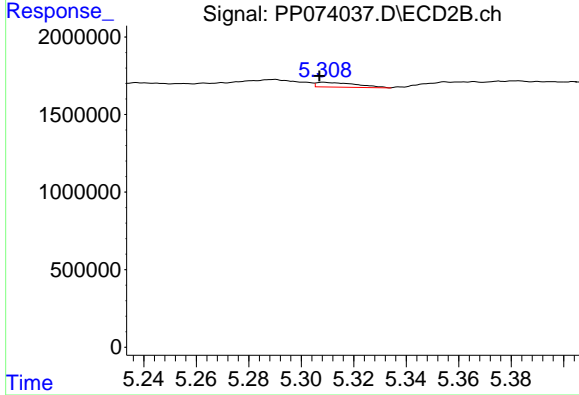
R.T.: 5.098 min
 Delta R.T.: 0.005 min
 Response: 69762
 Conc: 1.59 ng/ml



#7 AR-1016-5

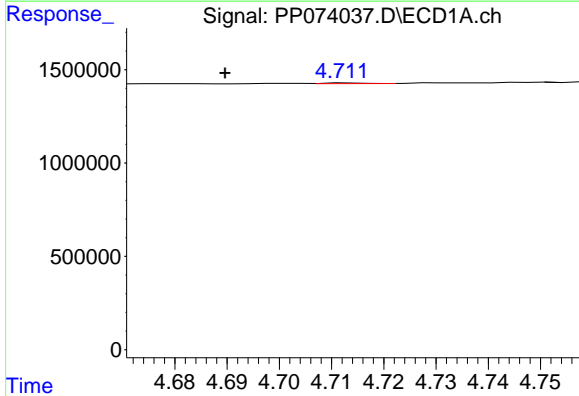
R.T.: 6.114 min
 Delta R.T.: 0.003 min
 Response: 104745
 Conc: 3.34 ng/ml

Instrument :
 ECD_P
 ClientSampleId :



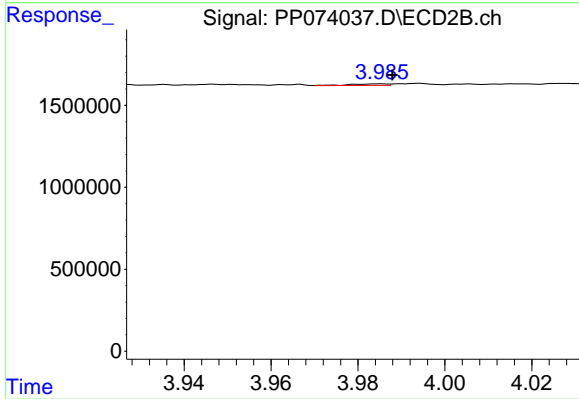
#7 AR-1016-5

R.T.: 5.309 min
 Delta R.T.: 0.002 min
 Response: 319841
 Conc: 5.86 ng/ml



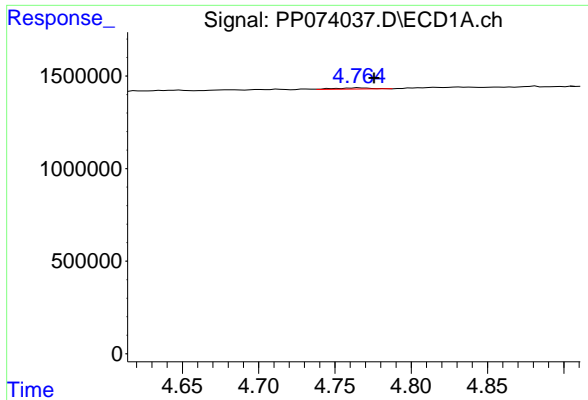
#8 AR-1221-1

R.T.: 4.713 min
 Delta R.T.: 0.023 min
 Response: 19001
 Conc: 1.06 ng/ml



#8 AR-1221-1

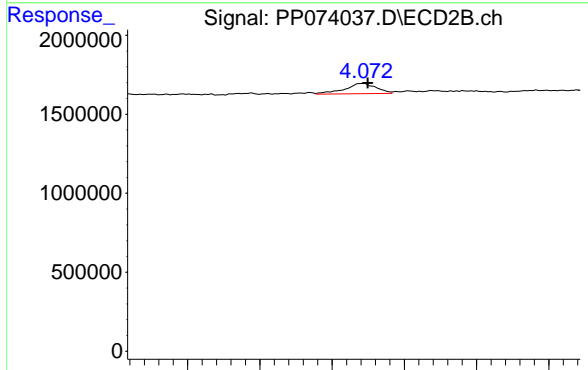
R.T.: 3.985 min
 Delta R.T.: -0.003 min
 Response: 57963
 Conc: 2.14 ng/ml



#9 AR-1221-2

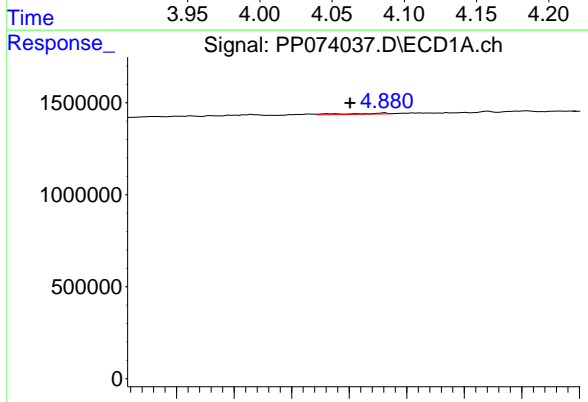
R.T.: 4.765 min
 Delta R.T.: -0.010 min
 Response: 110998
 Conc: 8.22 ng/ml

Instrument :
 ECD_P
 ClientSampleId :



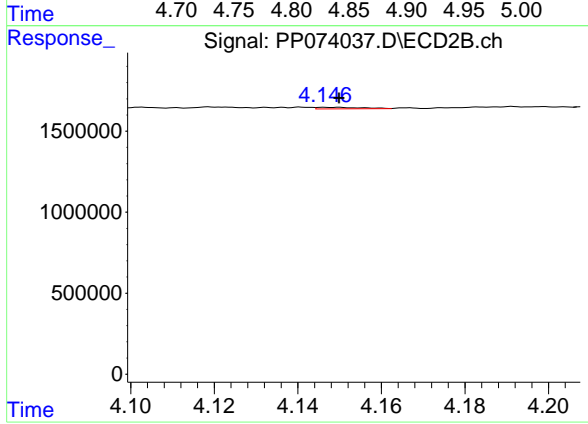
#9 AR-1221-2

R.T.: 4.072 min
 Delta R.T.: -0.003 min
 Response: 982315
 Conc: 48.25 ng/ml



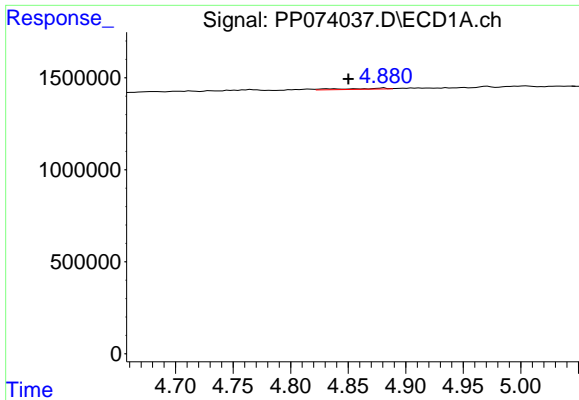
#10 AR-1221-3

R.T.: 4.881 min
 Delta R.T.: 0.030 min
 Response: 143029
 Conc: 3.44 ng/ml



#10 AR-1221-3

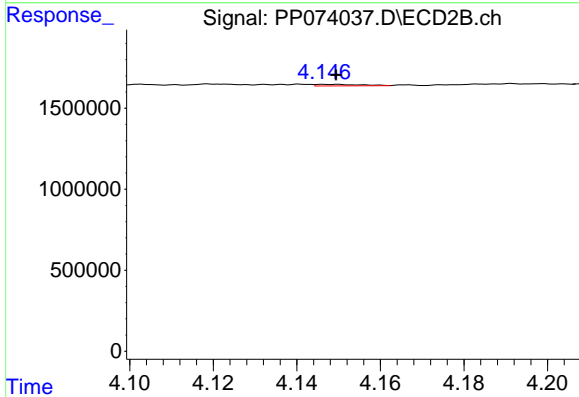
R.T.: 4.150 min
 Delta R.T.: 0.000 min
 Response: 67746
 Conc: 1.10 ng/ml



#11 AR-1232-1

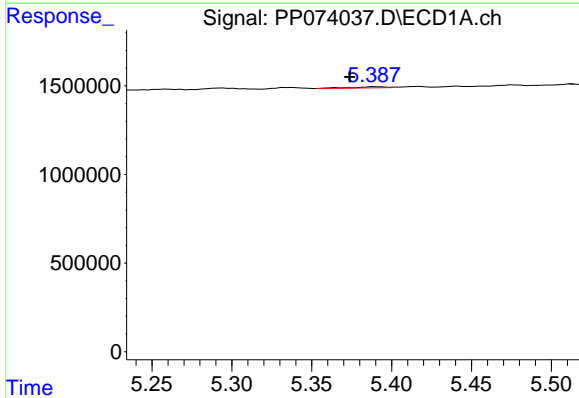
R.T.: 4.881 min
 Delta R.T.: 0.031 min
 Response: 143029
 Conc: 4.38 ng/ml

Instrument :
 ECD_P
 ClientSampleId :



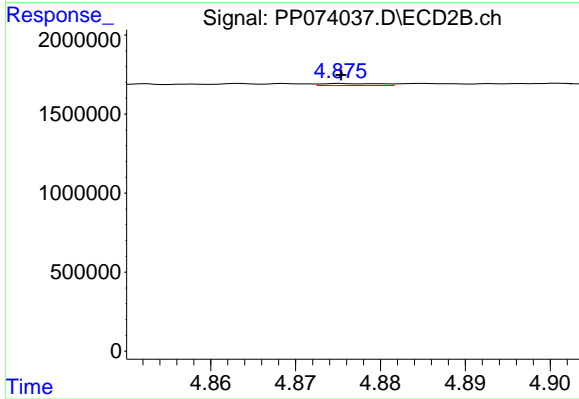
#11 AR-1232-1

R.T.: 4.150 min
 Delta R.T.: 0.000 min
 Response: 67746
 Conc: 1.45 ng/ml



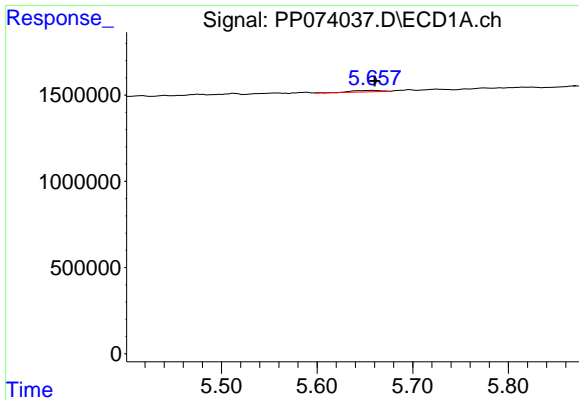
#12 AR-1232-2

R.T.: 5.389 min
 Delta R.T.: 0.015 min
 Response: 89439
 Conc: 5.50 ng/ml



#12 AR-1232-2

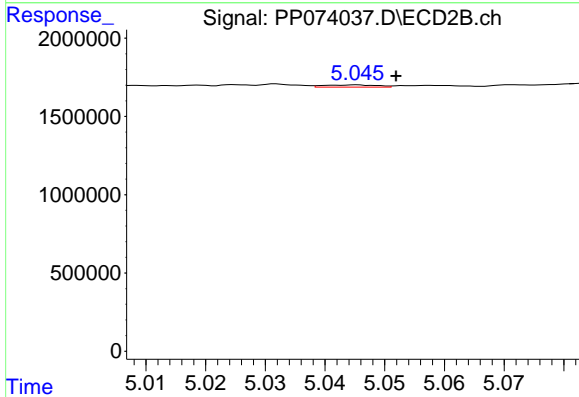
R.T.: 4.875 min
 Delta R.T.: 0.000 min
 Response: 58351
 Conc: 1.22 ng/ml



#13 AR-1232-3

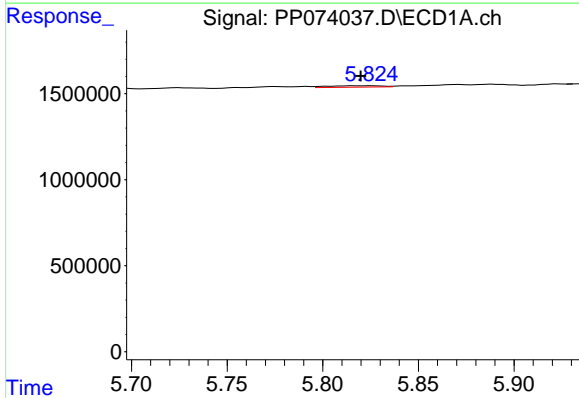
R.T.: 5.659 min
 Delta R.T.: -0.001 min
 Response: 178790
 Conc: 5.42 ng/ml

Instrument :
 ECD_P
 ClientSampleId :



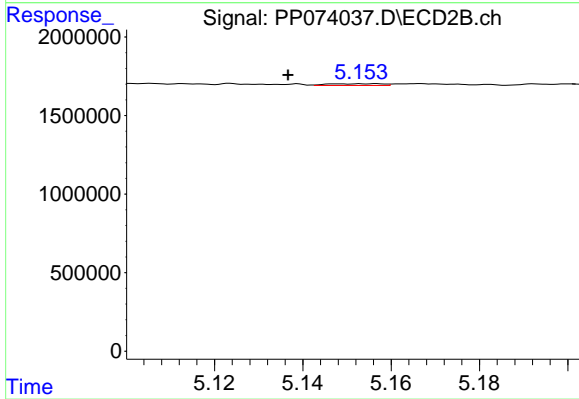
#13 AR-1232-3

R.T.: 5.045 min
 Delta R.T.: -0.007 min
 Response: 85800
 Conc: 3.43 ng/ml



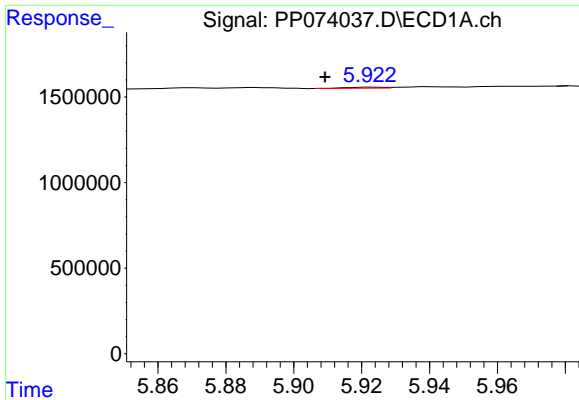
#14 AR-1232-4

R.T.: 5.825 min
 Delta R.T.: 0.006 min
 Response: 157995
 Conc: 9.61 ng/ml



#14 AR-1232-4

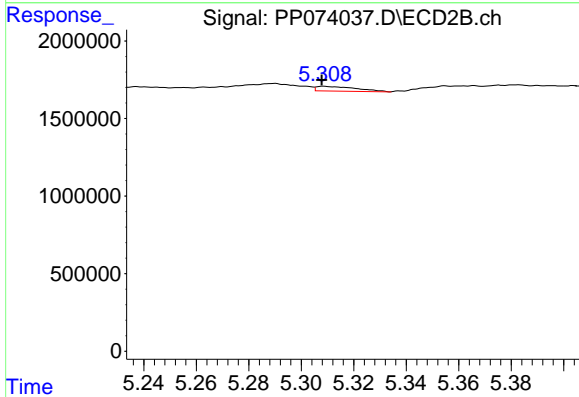
R.T.: 5.148 min
 Delta R.T.: 0.011 min
 Response: 93321
 Conc: 4.31 ng/ml



#15 AR-1232-5

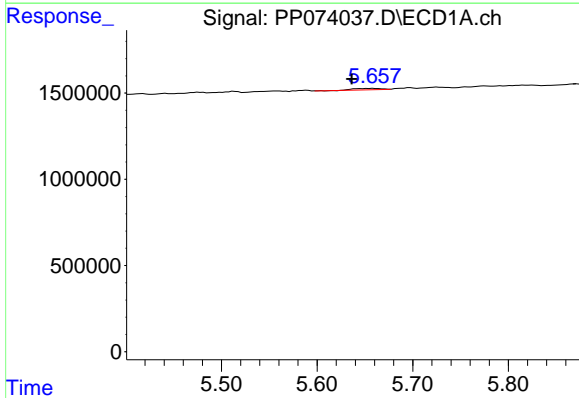
R.T.: 5.923 min
 Delta R.T.: 0.014 min
 Response: 46895
 Conc: 4.44 ng/ml

Instrument :
 ECD_P
 ClientSampleId :



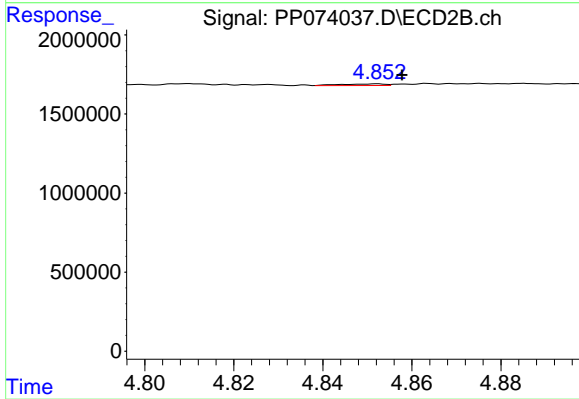
#15 AR-1232-5

R.T.: 5.309 min
 Delta R.T.: 0.000 min
 Response: 319841
 Conc: 14.18 ng/ml



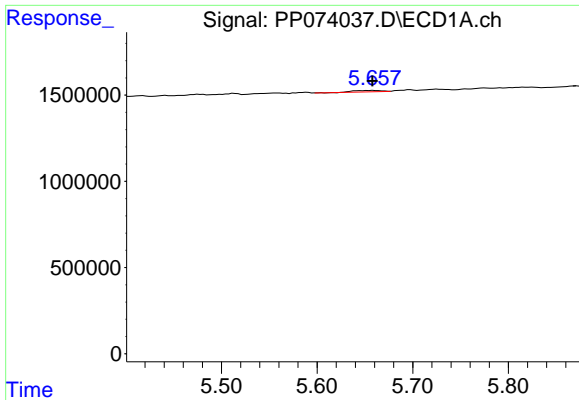
#16 AR-1242-1

R.T.: 5.659 min
 Delta R.T.: 0.022 min
 Response: 178790
 Conc: 4.68 ng/ml



#16 AR-1242-1

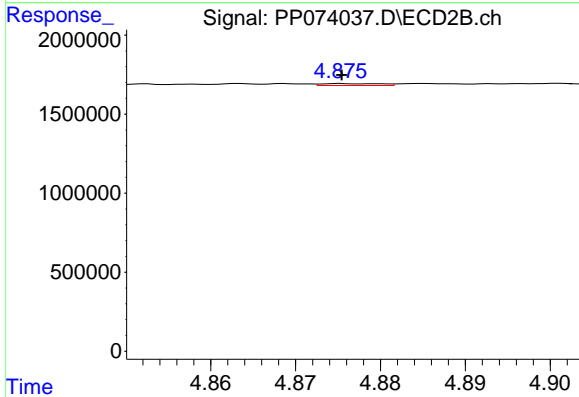
R.T.: 4.852 min
 Delta R.T.: -0.005 min
 Response: 70355
 Conc: 1.22 ng/ml



#17 AR-1242-2

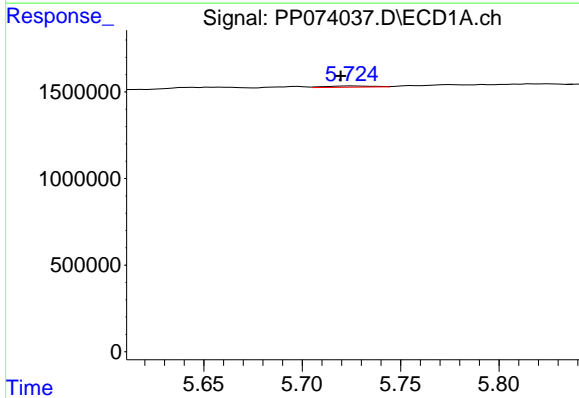
R.T.: 5.659 min
 Delta R.T.: 0.000 min
 Response: 178790
 Conc: 2.99 ng/ml

Instrument :
 ECD_P
 ClientSampleId :



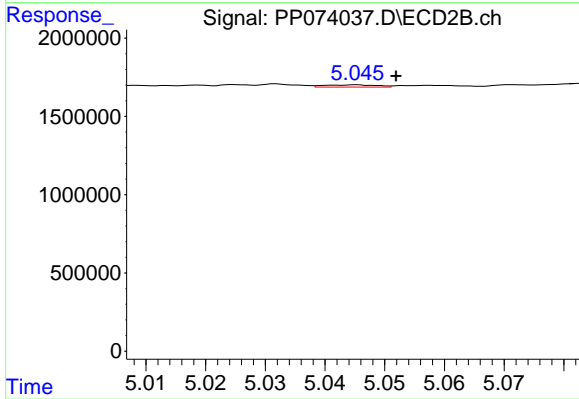
#17 AR-1242-2

R.T.: 4.875 min
 Delta R.T.: 0.000 min
 Response: 58351
 Conc: 0.67 ng/ml



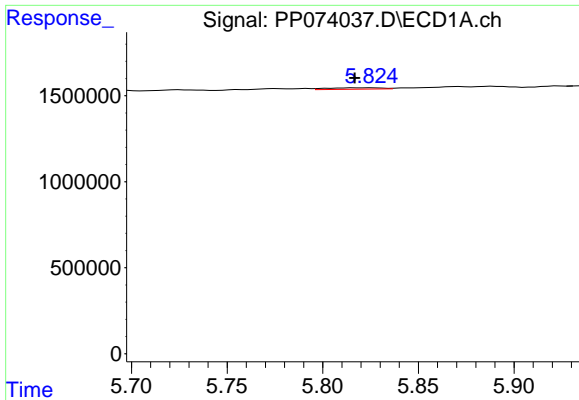
#18 AR-1242-3

R.T.: 5.725 min
 Delta R.T.: 0.005 min
 Response: 115307
 Conc: 3.15 ng/ml



#18 AR-1242-3

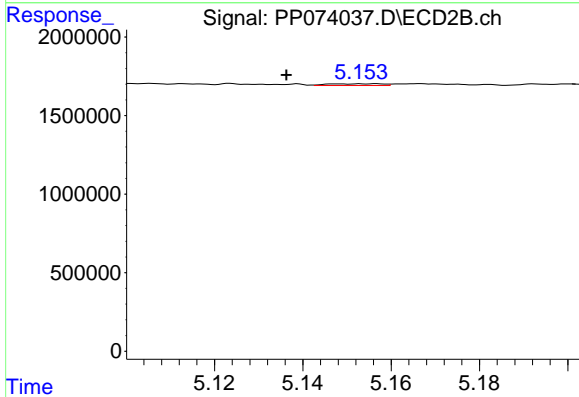
R.T.: 5.045 min
 Delta R.T.: -0.007 min
 Response: 85800
 Conc: 1.87 ng/ml



#19 AR-1242-4

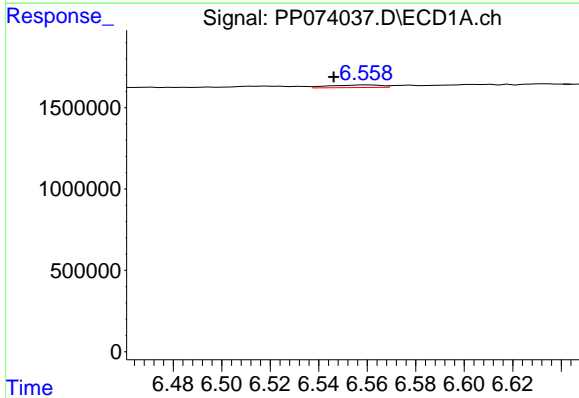
R.T.: 5.825 min
 Delta R.T.: 0.009 min
 Response: 157995
 Conc: 4.92 ng/ml

Instrument :
 ECD_P
 ClientSampleId :



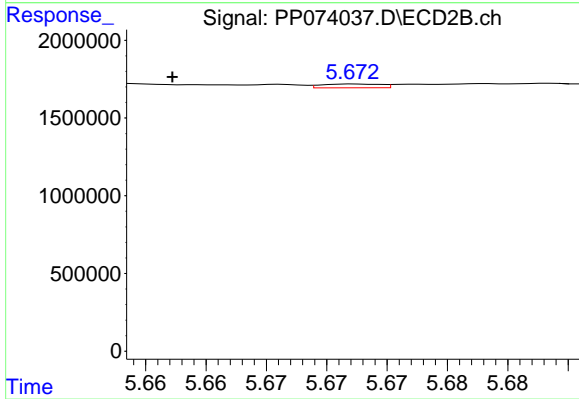
#19 AR-1242-4

R.T.: 5.148 min
 Delta R.T.: 0.011 min
 Response: 93321
 Conc: 2.11 ng/ml



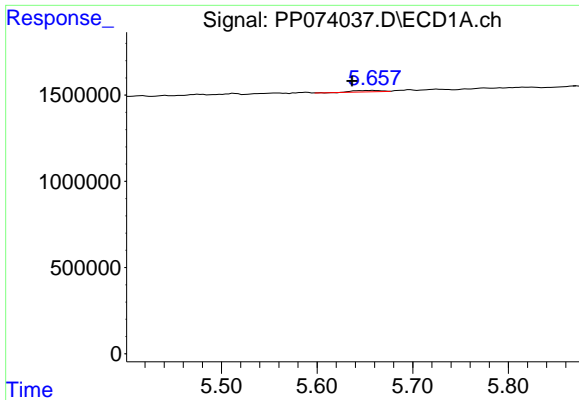
#20 AR-1242-5

R.T.: 6.560 min
 Delta R.T.: 0.014 min
 Response: 231903
 Conc: 7.08 ng/ml



#20 AR-1242-5

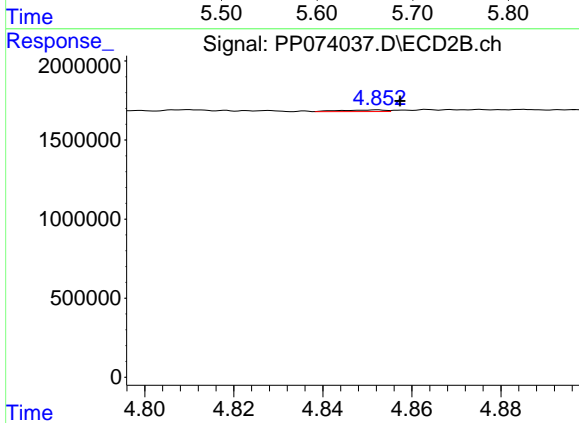
R.T.: 5.672 min
 Delta R.T.: 0.015 min
 Response: 83520
 Conc: 1.51 ng/ml



#21 AR-1248-1

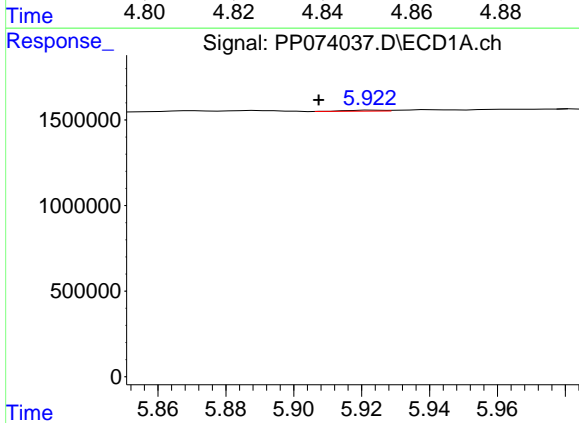
R.T.: 5.659 min
 Delta R.T.: 0.022 min
 Response: 178790
 Conc: 5.79 ng/ml

Instrument :
 ECD_P
 ClientSampleId :



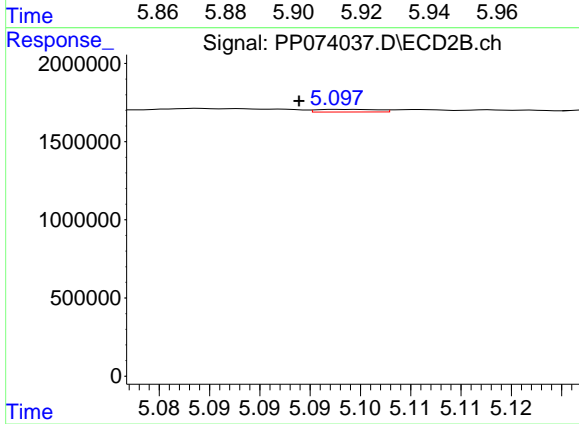
#21 AR-1248-1

R.T.: 4.852 min
 Delta R.T.: -0.005 min
 Response: 70355
 Conc: 1.57 ng/ml



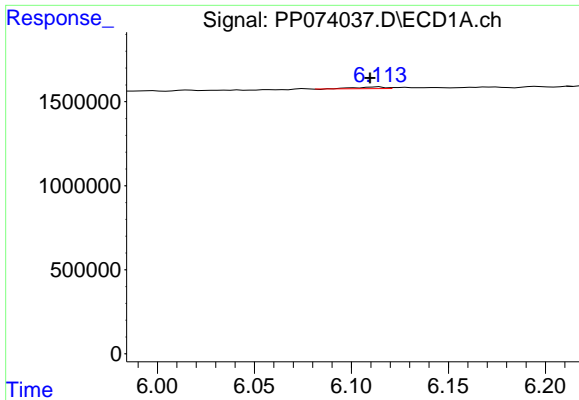
#22 AR-1248-2

R.T.: 5.923 min
 Delta R.T.: 0.016 min
 Response: 46895
 Conc: 1.17 ng/ml



#22 AR-1248-2

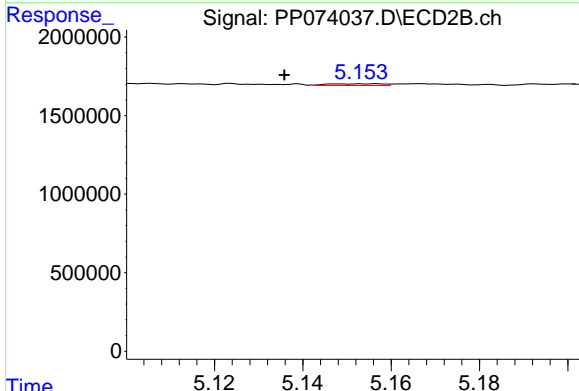
R.T.: 5.098 min
 Delta R.T.: 0.005 min
 Response: 69762
 Conc: 1.13 ng/ml



#23 AR-1248-3

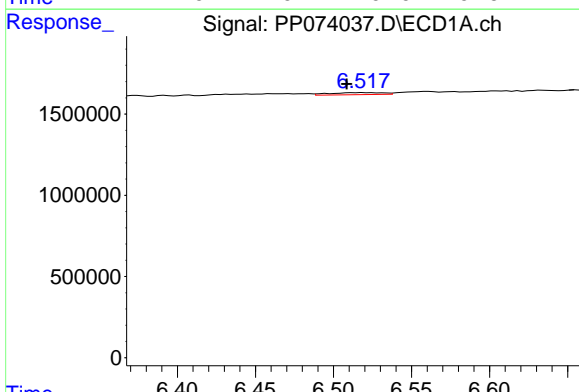
R.T.: 6.114 min
 Delta R.T.: 0.005 min
 Response: 104745
 Conc: 2.36 ng/ml

Instrument :
 ECD_P
 ClientSampleId :



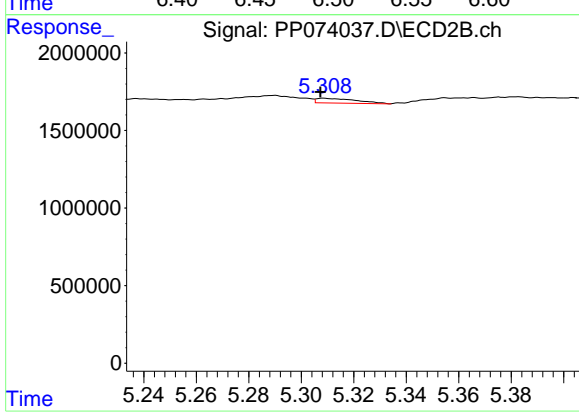
#23 AR-1248-3

R.T.: 5.148 min
 Delta R.T.: 0.012 min
 Response: 93321
 Conc: 1.46 ng/ml



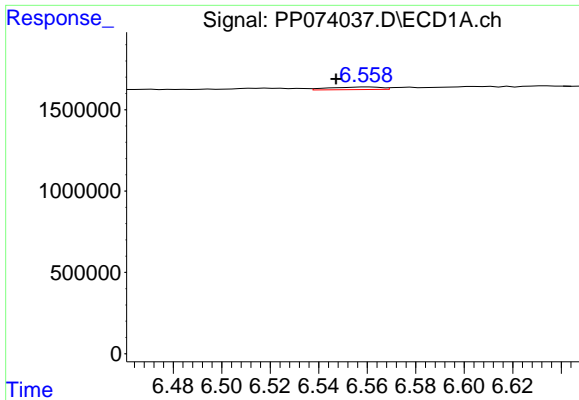
#24 AR-1248-4

R.T.: 6.519 min
 Delta R.T.: 0.010 min
 Response: 298980
 Conc: 5.43 ng/ml



#24 AR-1248-4

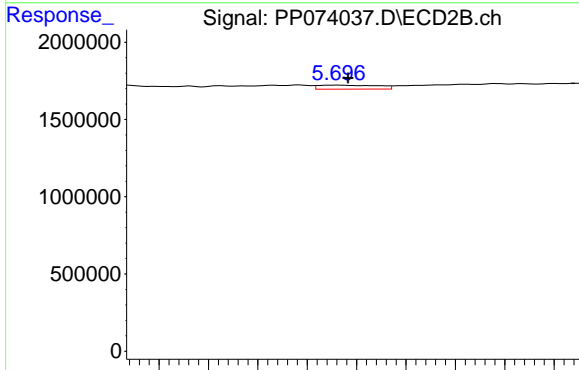
R.T.: 5.309 min
 Delta R.T.: 0.001 min
 Response: 319841
 Conc: 4.24 ng/ml



#25 AR-1248-5

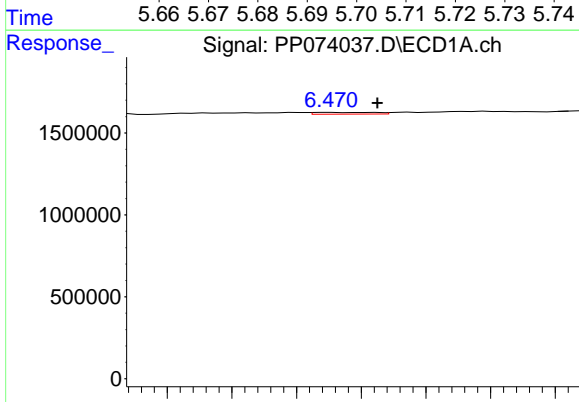
R.T.: 6.560 min
 Delta R.T.: 0.013 min
 Response: 231903
 Conc: 4.31 ng/ml

Instrument :
 ECD_P
 ClientSampleId :



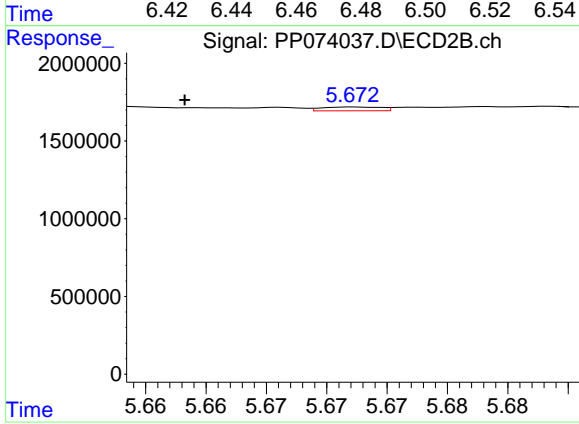
#25 AR-1248-5

R.T.: 5.696 min
 Delta R.T.: -0.002 min
 Response: 220928
 Conc: 2.96 ng/ml



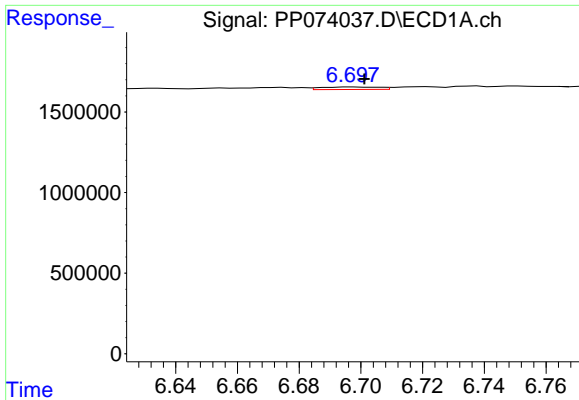
#26 AR-1254-1

R.T.: 6.471 min
 Delta R.T.: -0.014 min
 Response: 139590
 Conc: 2.60 ng/ml



#26 AR-1254-1

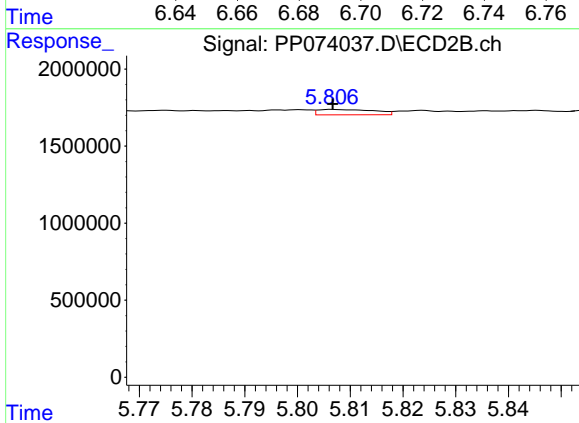
R.T.: 5.672 min
 Delta R.T.: 0.014 min
 Response: 83520
 Conc: 0.72 ng/ml



#27 AR-1254-2

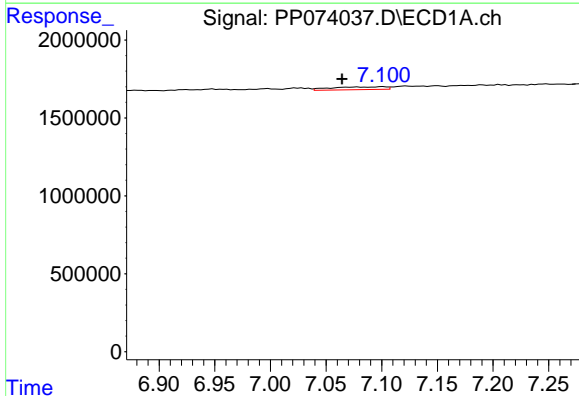
R.T.: 6.698 min
 Delta R.T.: -0.003 min
 Response: 201419
 Conc: 2.42 ng/ml

Instrument :
 ECD_P
 ClientSampleId :



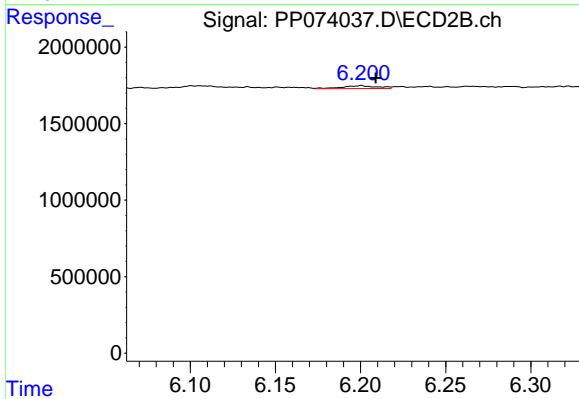
#27 AR-1254-2

R.T.: 5.807 min
 Delta R.T.: 0.000 min
 Response: 260088
 Conc: 2.58 ng/ml



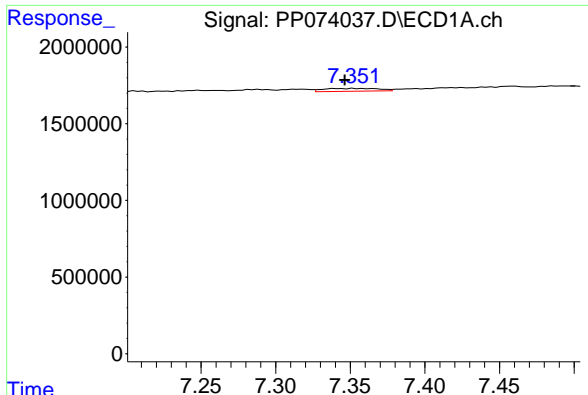
#28 AR-1254-3

R.T.: 7.101 min
 Delta R.T.: 0.036 min
 Response: 594992
 Conc: 6.74 ng/ml



#28 AR-1254-3

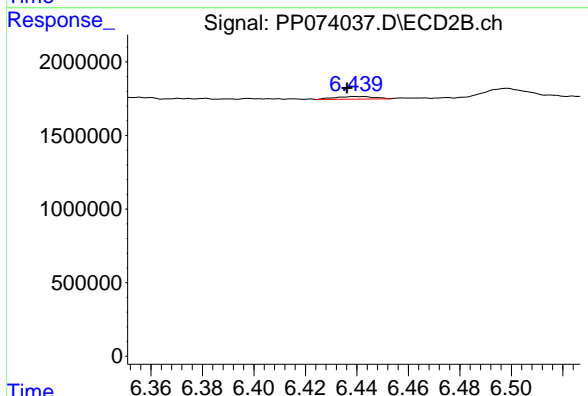
R.T.: 6.200 min
 Delta R.T.: -0.008 min
 Response: 274539
 Conc: 1.78 ng/ml



#29 AR-1254-4

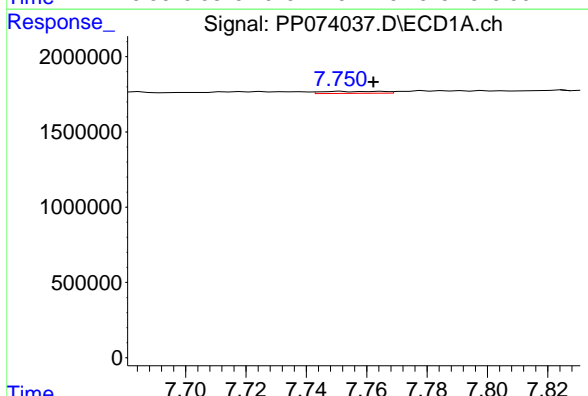
R.T.: 7.353 min
 Delta R.T.: 0.007 min
 Response: 492255
 Conc: 6.26 ng/ml

Instrument :
 ECD_P
 ClientSampleId :



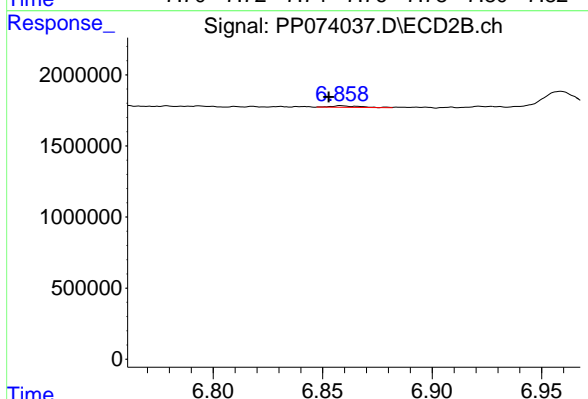
#29 AR-1254-4

R.T.: 6.440 min
 Delta R.T.: 0.004 min
 Response: 189854
 Conc: 2.01 ng/ml



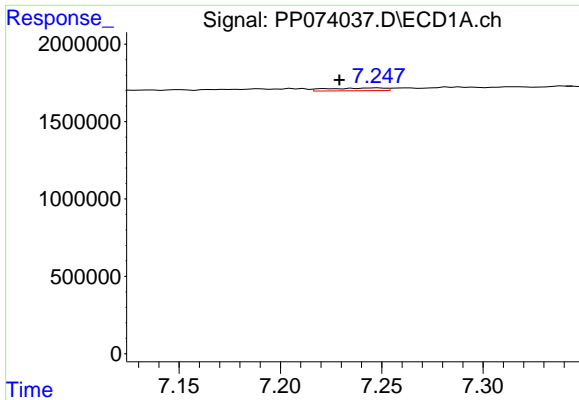
#30 AR-1254-5

R.T.: 7.751 min
 Delta R.T.: -0.011 min
 Response: 189441
 Conc: 2.57 ng/ml



#30 AR-1254-5

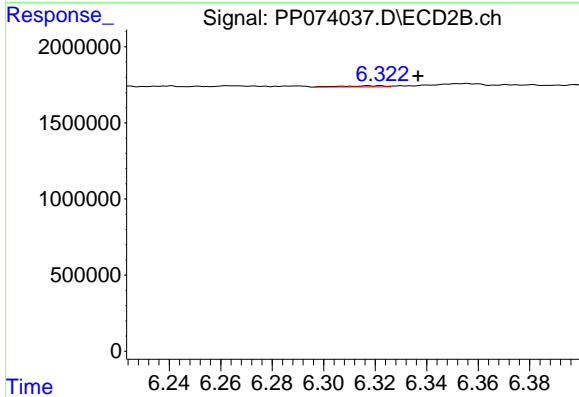
R.T.: 6.858 min
 Delta R.T.: 0.006 min
 Response: 103357
 Conc: 0.77 ng/ml



#31 AR-1260-1

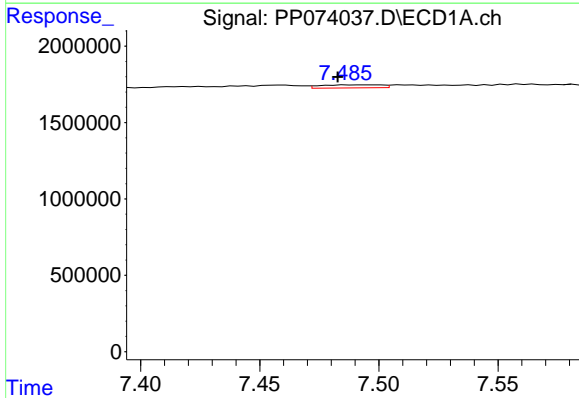
R.T.: 7.248 min
 Delta R.T.: 0.019 min
 Response: 346843
 Conc: 5.88 ng/ml

Instrument :
 ECD_P
 ClientSampleId :



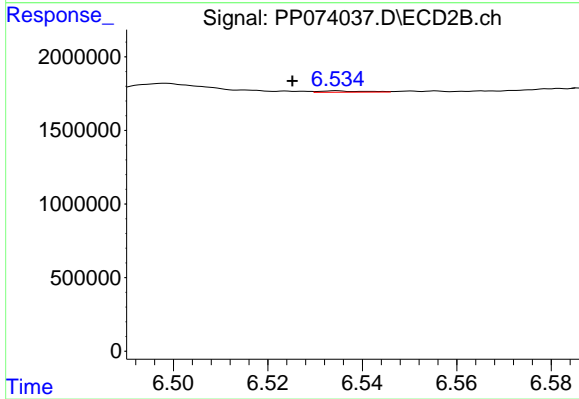
#31 AR-1260-1

R.T.: 6.322 min
 Delta R.T.: -0.015 min
 Response: 78141
 Conc: 0.80 ng/ml



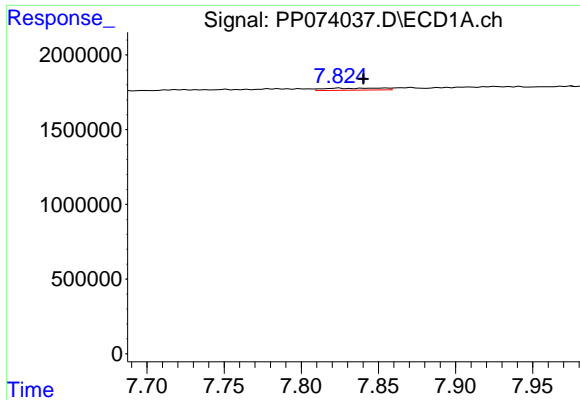
#32 AR-1260-2

R.T.: 7.495 min
 Delta R.T.: 0.012 min
 Response: 355189
 Conc: 3.71 ng/ml



#32 AR-1260-2

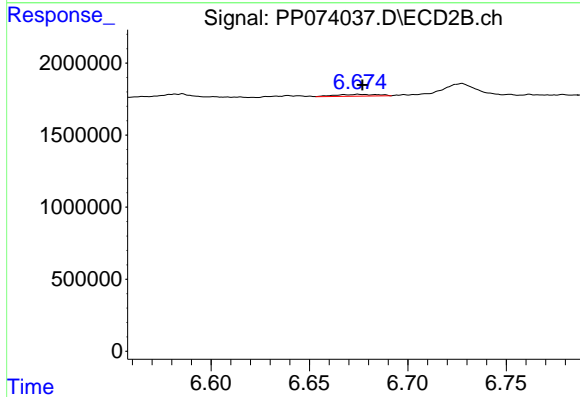
R.T.: 6.534 min
 Delta R.T.: 0.009 min
 Response: 54033
 Conc: 0.44 ng/ml



#33 AR-1260-3

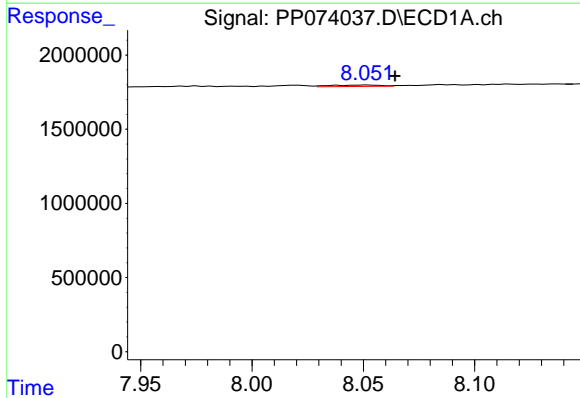
R.T.: 7.855 min
 Delta R.T.: 0.015 min
 Response: 344311
 Conc: 4.71 ng/ml

Instrument :
 ECD_P
 ClientSampleId :



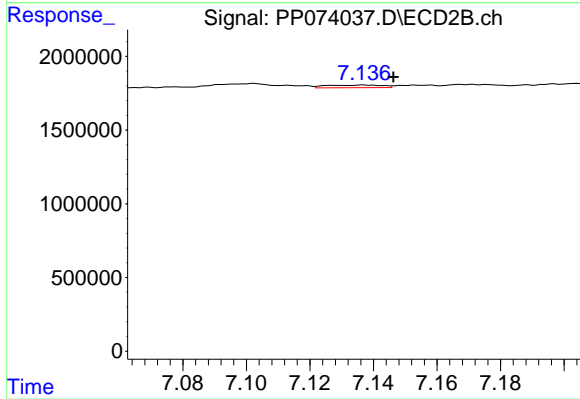
#33 AR-1260-3

R.T.: 6.675 min
 Delta R.T.: -0.002 min
 Response: 179032
 Conc: 1.64 ng/ml



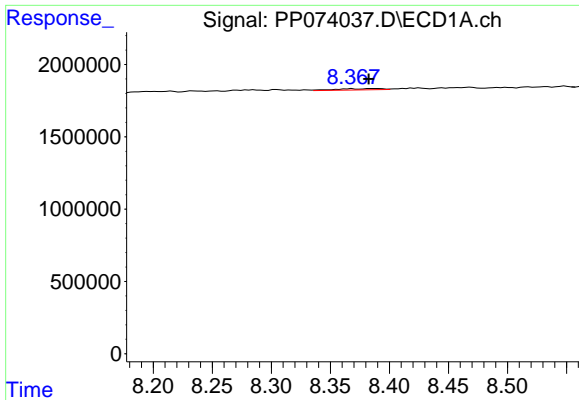
#34 AR-1260-4

R.T.: 8.052 min
 Delta R.T.: -0.013 min
 Response: 148554
 Conc: 2.27 ng/ml



#34 AR-1260-4

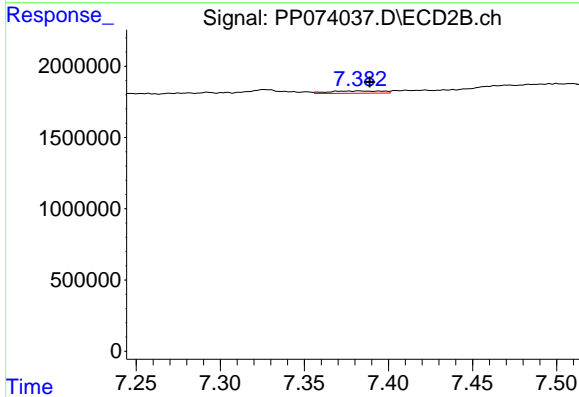
R.T.: 7.137 min
 Delta R.T.: -0.009 min
 Response: 226465
 Conc: 2.53 ng/ml



#35 AR-1260-5

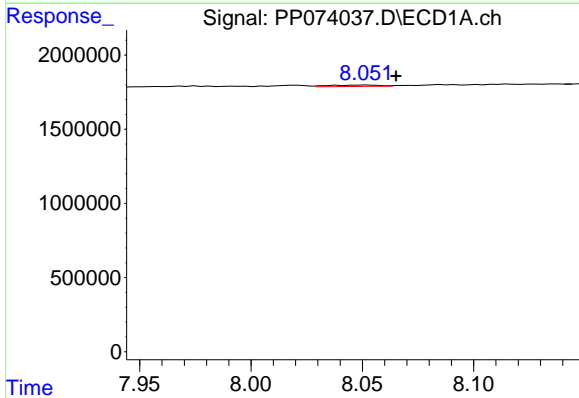
R.T.: 8.368 min
 Delta R.T.: -0.014 min
 Response: 234687
 Conc: 1.56 ng/ml

Instrument :
 ECD_P
 ClientSampleId :



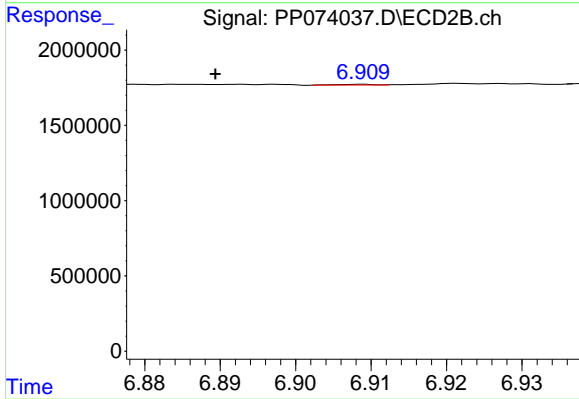
#35 AR-1260-5

R.T.: 7.383 min
 Delta R.T.: -0.006 min
 Response: 355436
 Conc: 1.58 ng/ml



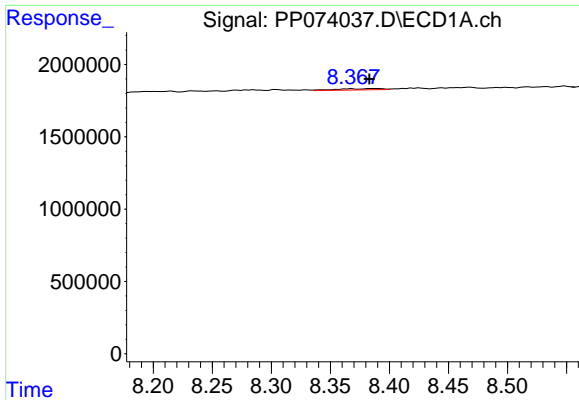
#36 AR-1262-1

R.T.: 8.052 min
 Delta R.T.: -0.013 min
 Response: 148554
 Conc: 1.71 ng/ml



#36 AR-1262-1

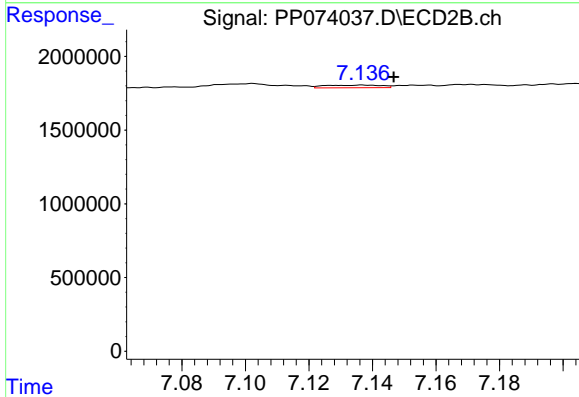
R.T.: 6.909 min
 Delta R.T.: 0.019 min
 Response: 18496
 Conc: 0.13 ng/ml



#37 AR-1262-2

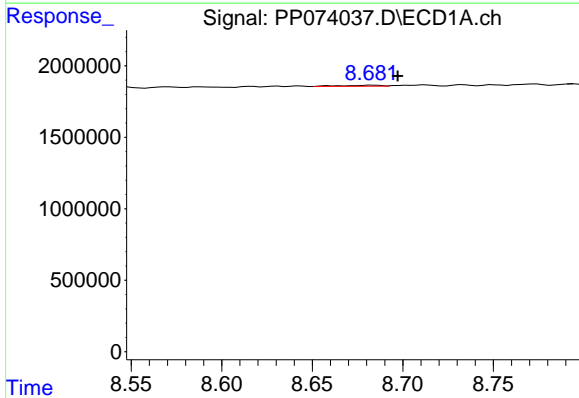
R.T.: 8.368 min
 Delta R.T.: -0.015 min
 Response: 234687
 Conc: 1.19 ng/ml

Instrument :
 ECD_P
 ClientSampleId :



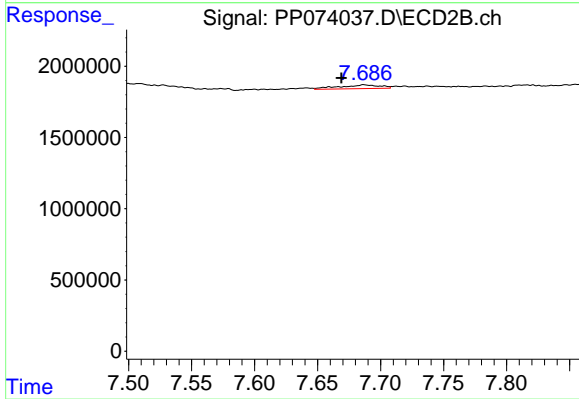
#37 AR-1262-2

R.T.: 7.137 min
 Delta R.T.: -0.010 min
 Response: 226465
 Conc: 1.77 ng/ml



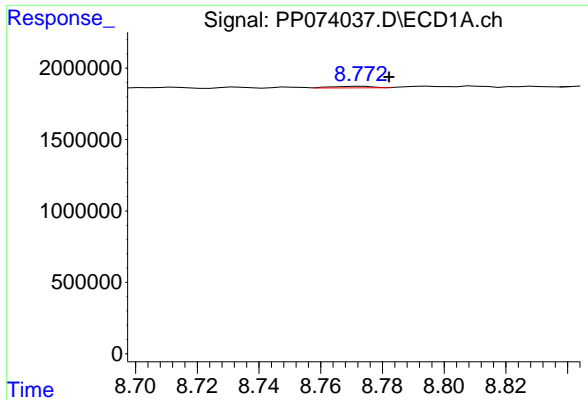
#38 AR-1262-3

R.T.: 8.683 min
 Delta R.T.: -0.014 min
 Response: 110662
 Conc: 0.88 ng/ml



#38 AR-1262-3

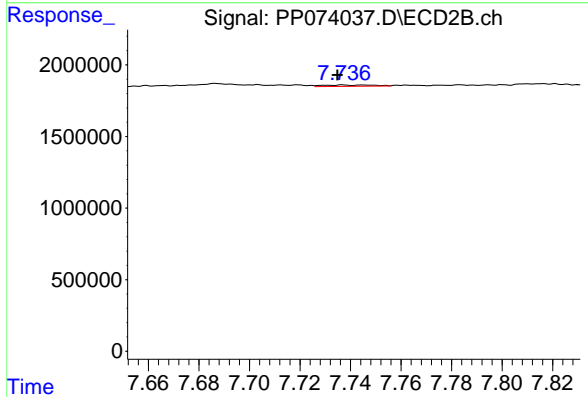
R.T.: 7.687 min
 Delta R.T.: 0.018 min
 Response: 579997
 Conc: 5.09 ng/ml



#39 AR-1262-4

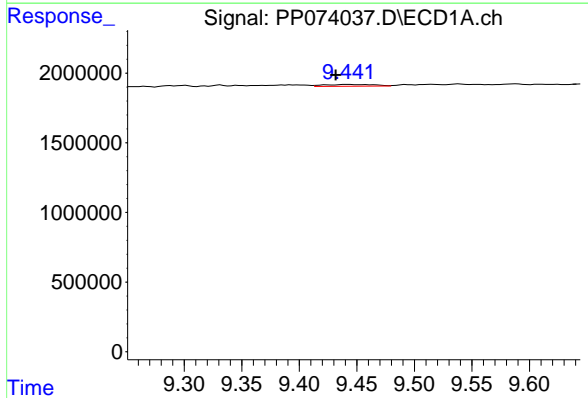
R.T.: 8.773 min
 Delta R.T.: -0.009 min
 Response: 104725
 Conc: 1.12 ng/ml

Instrument :
 ECD_P
 ClientSampleId :



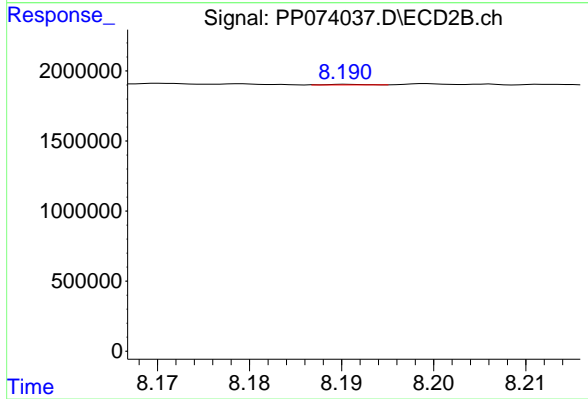
#39 AR-1262-4

R.T.: 7.737 min
 Delta R.T.: 0.002 min
 Response: 130584
 Conc: 0.71 ng/ml



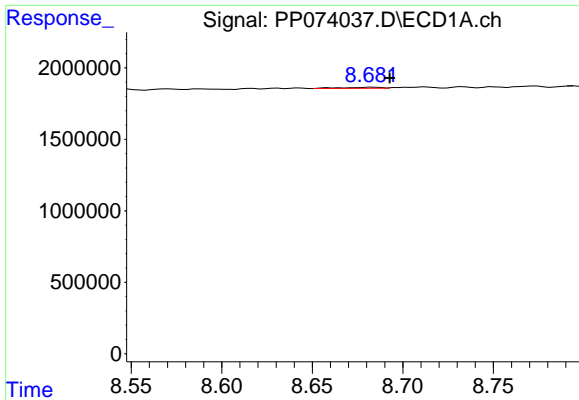
#40 AR-1262-5

R.T.: 9.442 min
 Delta R.T.: 0.011 min
 Response: 395058
 Conc: 6.23 ng/ml



#40 AR-1262-5

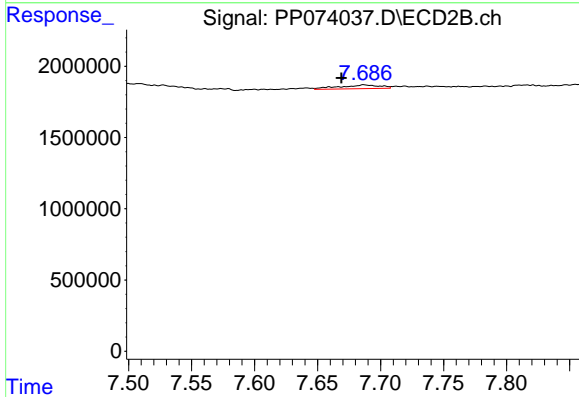
R.T.: 8.191 min
 Delta R.T.: -0.040 min
 Response: 11107
 Conc: 0.13 ng/ml



#41 AR-1268-1

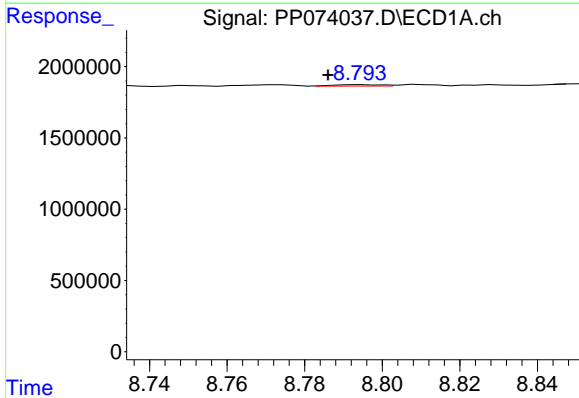
R.T.: 8.683 min
 Delta R.T.: -0.010 min
 Response: 110662
 Conc: 0.50 ng/ml

Instrument :
 ECD_P
 ClientSampleId :



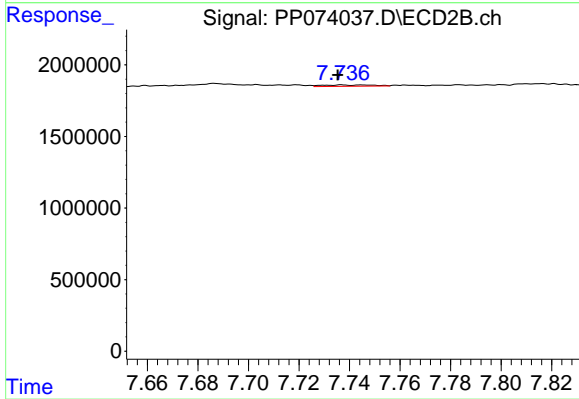
#41 AR-1268-1

R.T.: 7.687 min
 Delta R.T.: 0.018 min
 Response: 579997
 Conc: 1.89 ng/ml



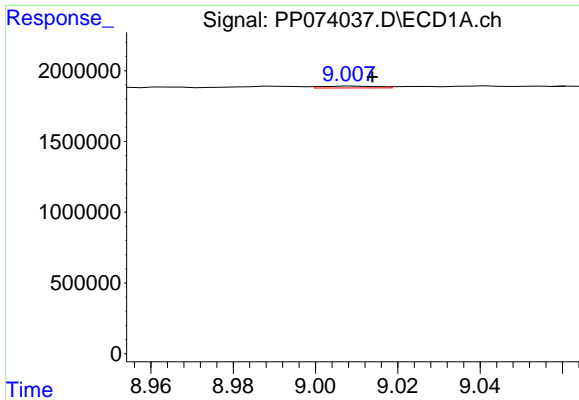
#42 AR-1268-2

R.T.: 8.795 min
 Delta R.T.: 0.009 min
 Response: 84769
 Conc: 0.44 ng/ml



#42 AR-1268-2

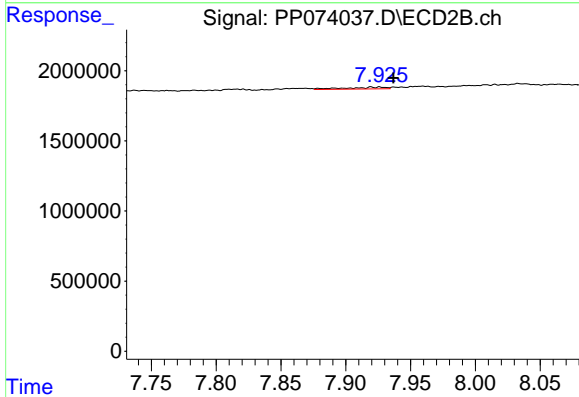
R.T.: 7.737 min
 Delta R.T.: 0.002 min
 Response: 130584
 Conc: 0.49 ng/ml



#43 AR-1268-3

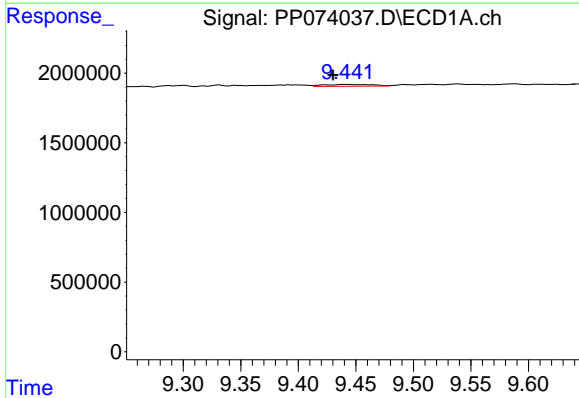
R.T.: 9.009 min
 Delta R.T.: -0.005 min
 Response: 125173
 Conc: 0.76 ng/ml

Instrument :
 ECD_P
 ClientSampleId :



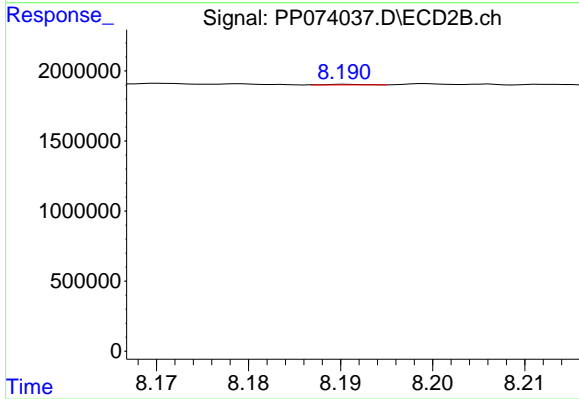
#43 AR-1268-3

R.T.: 7.926 min
 Delta R.T.: -0.010 min
 Response: 283585
 Conc: 1.26 ng/ml



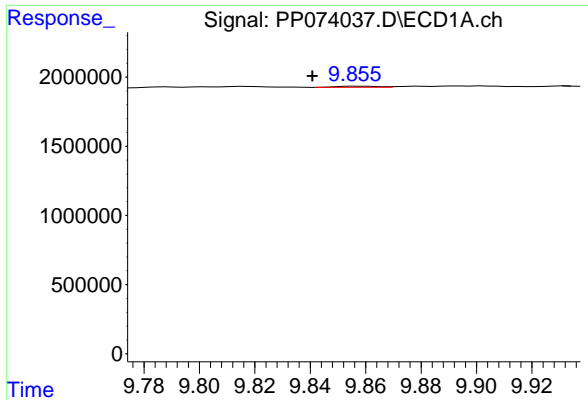
#44 AR-1268-4

R.T.: 9.442 min
 Delta R.T.: 0.012 min
 Response: 395058
 Conc: 5.68 ng/ml



#44 AR-1268-4

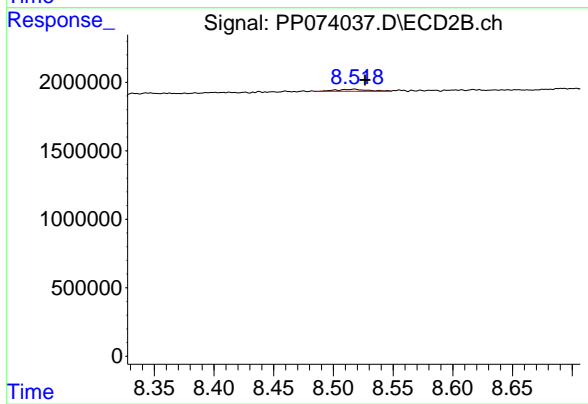
R.T.: 8.191 min
 Delta R.T.: -0.040 min
 Response: 11107
 Conc: 0.12 ng/ml



#45 AR-1268-5

R.T.: 9.857 min
 Delta R.T.: 0.017 min
 Response: 76405
 Conc: 0.17 ng/ml

Instrument :
 ECD_P
 ClientSampleId :



#45 AR-1268-5

R.T.: 8.518 min
 Delta R.T.: -0.009 min
 Response: 259291
 Conc: 0.42 ng/ml