

Data Path : Z:\pestpcbsrv\HPCHEM1\ECD\_P\Data\PP072321\  
 Data File : PP037645.D  
 Signal(s) : Signal #1: ECD1A.CH Signal #2: ECD2B.CH  
 Acq On : 23 Jul 2021 21:38  
 Operator : DD\AJ  
 Sample : M3152-10  
 Misc :  
 ALS Vial : 29 Sample Multiplier: 1

Instrument :  
 ECD\_P  
 ClientSampleId :  
 COLL-HOLE-B

Integration File signal 1: autoint1.e  
 Integration File signal 2: autoint2.e  
 Quant Time: Jul 26 07:39:01 2021  
 Quant Method : Z:\pestpcbsrv\HPCHEM1\ECD\_P\methods\PP070621.M  
 Quant Title : GC EXTRACTABLES  
 QLast Update : Wed Jul 07 08:32:32 2021  
 Response via : Initial Calibration  
 Integrator: ChemStation 6890 Scale Mode: Small noise peaks clipped

Volume Inj. : 2 µl  
 Signal #1 Phase : ZB-MR1 Signal #2 Phase: ZB-MR2  
 Signal #1 Info : 30Mx0.32mmx 0.50µ Signal #2 Info : 30M x 0.32mm x 0.25µm

Compound	RT#1	RT#2	Resp#1	Resp#2	ng/ml	ng/ml
-----						
System Monitoring Compounds						
1) SA Tetrachlo...	4.955	3.946	994331	590176	21.878	21.567
2) SA Decachlor...	10.981	9.234	879870	404761	19.113	14.542

Target Compounds

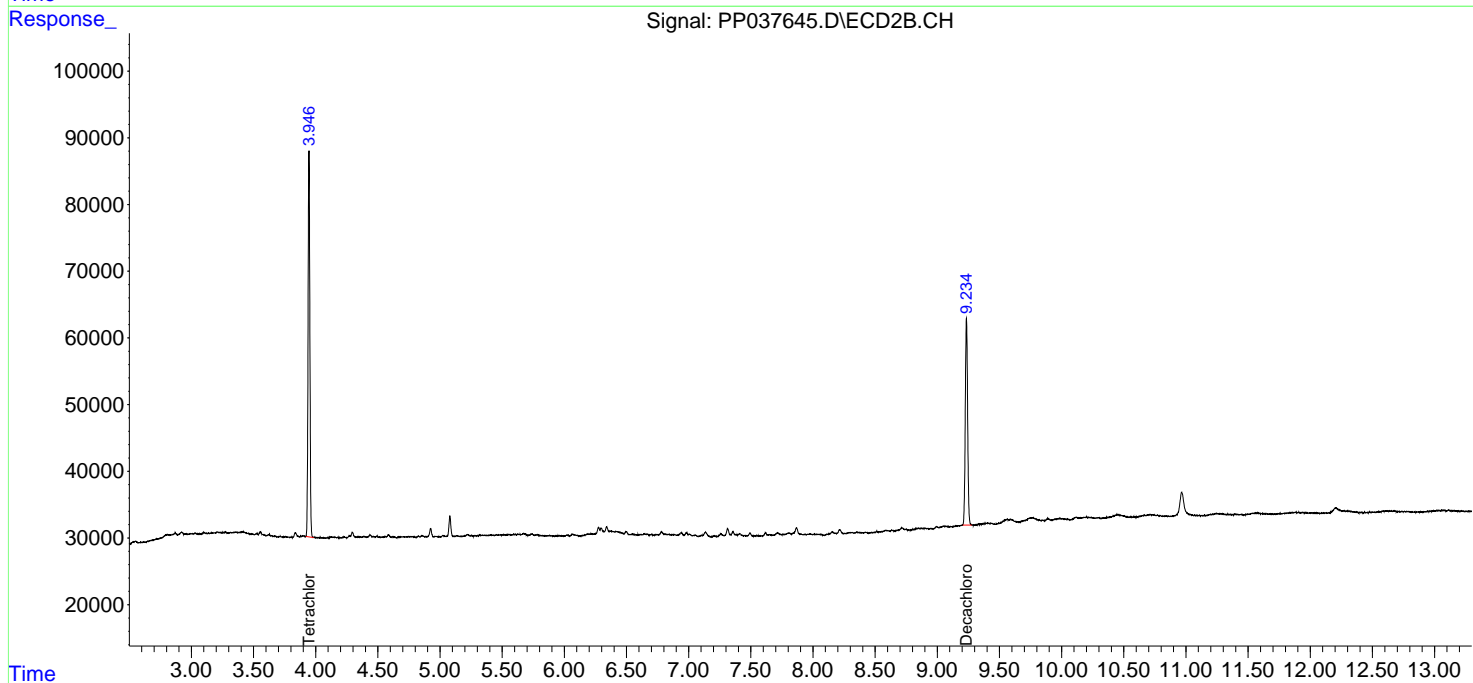
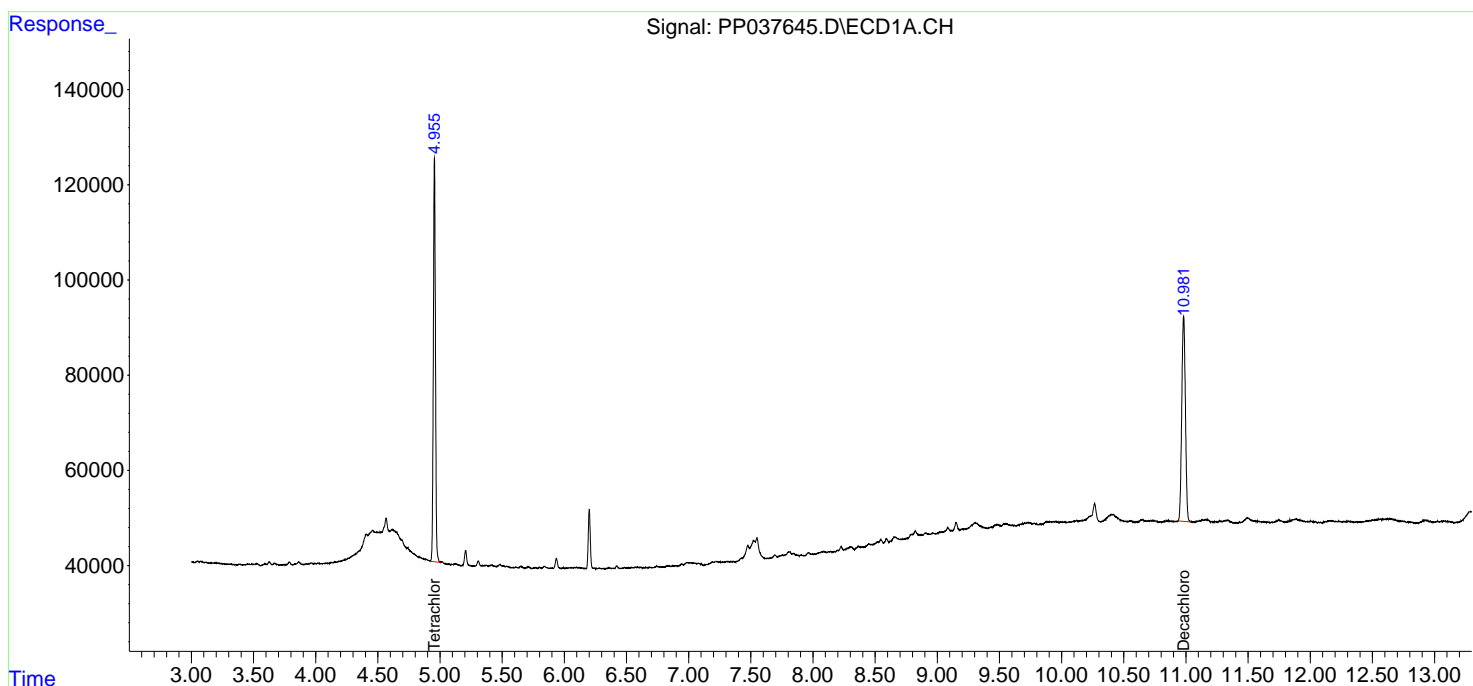
(f)=RT Delta > 1/2 Window (#)=Amounts differ by > 25% (m)=manual int.

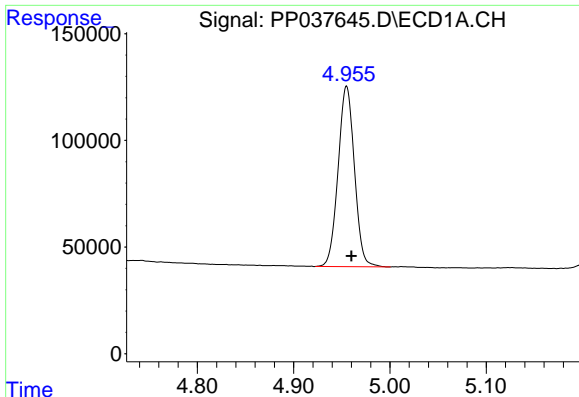
Data Path : Z:\pestpcbsrv\HPCHEM1\ECD\_P\Data\PP072321\  
 Data File : PP037645.D  
 Signal(s) : Signal #1: ECD1A.CH Signal #2: ECD2B.CH  
 Acq On : 23 Jul 2021 21:38  
 Operator : DD\AJ  
 Sample : M3152-10  
 Misc :  
 ALS Vial : 29 Sample Multiplier: 1

Instrument :  
 ECD\_P  
 ClientSampleId :  
 COLL-HOLE-B

Integration File signal 1: autoint1.e  
 Integration File signal 2: autoint2.e  
 Quant Time: Jul 26 07:39:01 2021  
 Quant Method : Z:\pestpcbsrv\HPCHEM1\ECD\_P\methods\PP070621.M  
 Quant Title : GC EXTRACTABLES  
 QLast Update : Wed Jul 07 08:32:32 2021  
 Response via : Initial Calibration  
 Integrator: ChemStation 6890 Scale Mode: Small noise peaks clipped

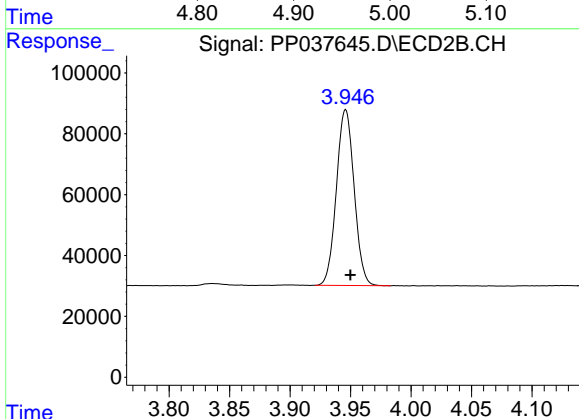
Volume Inj. : 2 µl  
 Signal #1 Phase : ZB-MR1 Signal #2 Phase: ZB-MR2  
 Signal #1 Info : 30Mx0.32mmx 0.50µ Signal #2 Info : 30M x 0.32mm x 0.25µm



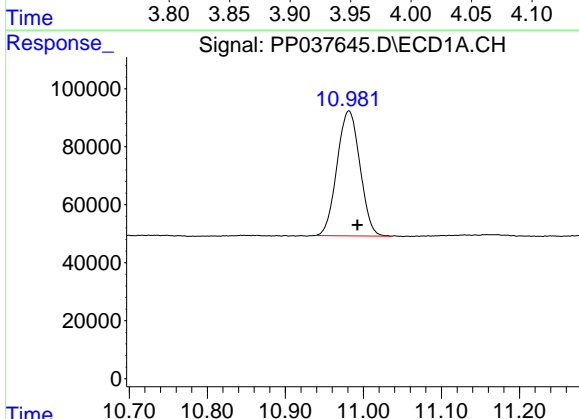


#1 Tetrachloro-m-xylene  
 R.T.: 4.955 min  
 Delta R.T.: -0.005 min  
 Response: 994331  
 Conc: 21.88 ng/ml

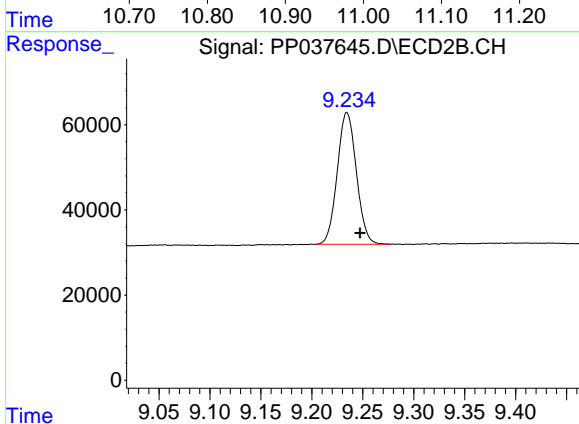
Instrument :  
 ECD\_P  
 ClientSampleId :  
 COLL-HOLE-B



#1 Tetrachloro-m-xylene  
 R.T.: 3.946 min  
 Delta R.T.: -0.004 min  
 Response: 590176  
 Conc: 21.57 ng/ml



#2 Decachlorobiphenyl  
 R.T.: 10.981 min  
 Delta R.T.: -0.011 min  
 Response: 879870  
 Conc: 19.11 ng/ml



#2 Decachlorobiphenyl  
 R.T.: 9.234 min  
 Delta R.T.: -0.013 min  
 Response: 404761  
 Conc: 14.54 ng/ml