

Data Path : Z:\pestpcbsrv\HPCHEM1\ECD_P\Data\PP072324\
 Data File : PP066477.D
 Signal(s) : Signal #1: ECD1A.ch Signal #2: ECD2B.ch
 Acq On : 23 Jul 2024 11:50
 Operator : YP\AJ
 Sample : PB162225BL
 Misc :
 ALS Vial : 7 Sample Multiplier: 1

Instrument :
 ECD_P
 ClientSampleId :
 PB162225BL

Integration File signal 1: autoint1.e
 Integration File signal 2: autoint2.e
 Quant Time: Jul 24 01:48:48 2024
 Quant Method : Z:\pestpcbsrv\HPCHEM1\ECD_P\methods\PP071624.M
 Quant Title : GC EXTRACTABLES
 QLast Update : Wed Jul 17 07:20:03 2024
 Response via : Initial Calibration
 Integrator: ChemStation

Volume Inj. : 2 µl
 Signal #1 Phase : ZB-MR2 Signal #2 Phase: ZB-MR2
 Signal #1 Info : 30Mx0.32mmx 0.50µ Signal #2 Info : 30M x 0.32mm x 0.25µm

Compound	RT#1	RT#2	Resp#1	Resp#2	ng/ml	ng/ml

System Monitoring Compounds						
1) SA Tetrachlo...	4.791	4.028	42702632	44329228	24.238	23.214
2) SA Decachlor...	10.791	9.204	41627856	27733468	23.716	21.735
Target Compounds						
9) L2 AR-1221-2	5.102	0.000	634632	0	37.810	N.D. #
20) L4 AR-1242-5	6.922f	0.000	588627	0	11.834	N.D. #
24) L5 AR-1248-4	6.864	0.000	134433	0	1.443	N.D. #
25) L5 AR-1248-5	6.922f	0.000	588627	0	6.380	N.D. #
26) L6 AR-1254-1	6.833	0.000	436976	0	4.673	N.D. #
27) L6 AR-1254-2	7.075f	0.000	5951191	0	42.191	N.D. #
30) L6 AR-1254-5	8.130	0.000	75548	0	0.760	N.D. #
31) L7 AR-1260-1	7.587	0.000	237046	0	2.241	N.D. #
32) L7 AR-1260-2	7.849	0.000	417620	0	3.625	N.D. #
33) L7 AR-1260-3	8.181f	0.000	84789	0	1.068	N.D. #
34) L7 AR-1260-4	8.457	0.000	266409	0	3.059	N.D. #
35) L7 AR-1260-5	8.822f	0.000	27364	0	0.177	N.D. #
37) L8 AR-1262-2	8.822f	0.000	27364	0	0.145	N.D. #
39) L8 AR-1262-4	9.213f	0.000	92319	0	0.820	N.D. #
40) L8 AR-1262-5	9.968	0.000	65557	0	1.007	N.D. #
42) L9 AR-1268-2	9.213f	0.000	92319	0	0.433	N.D. #
44) L9 AR-1268-4	9.968	0.000	65557	0	0.940	N.D. #

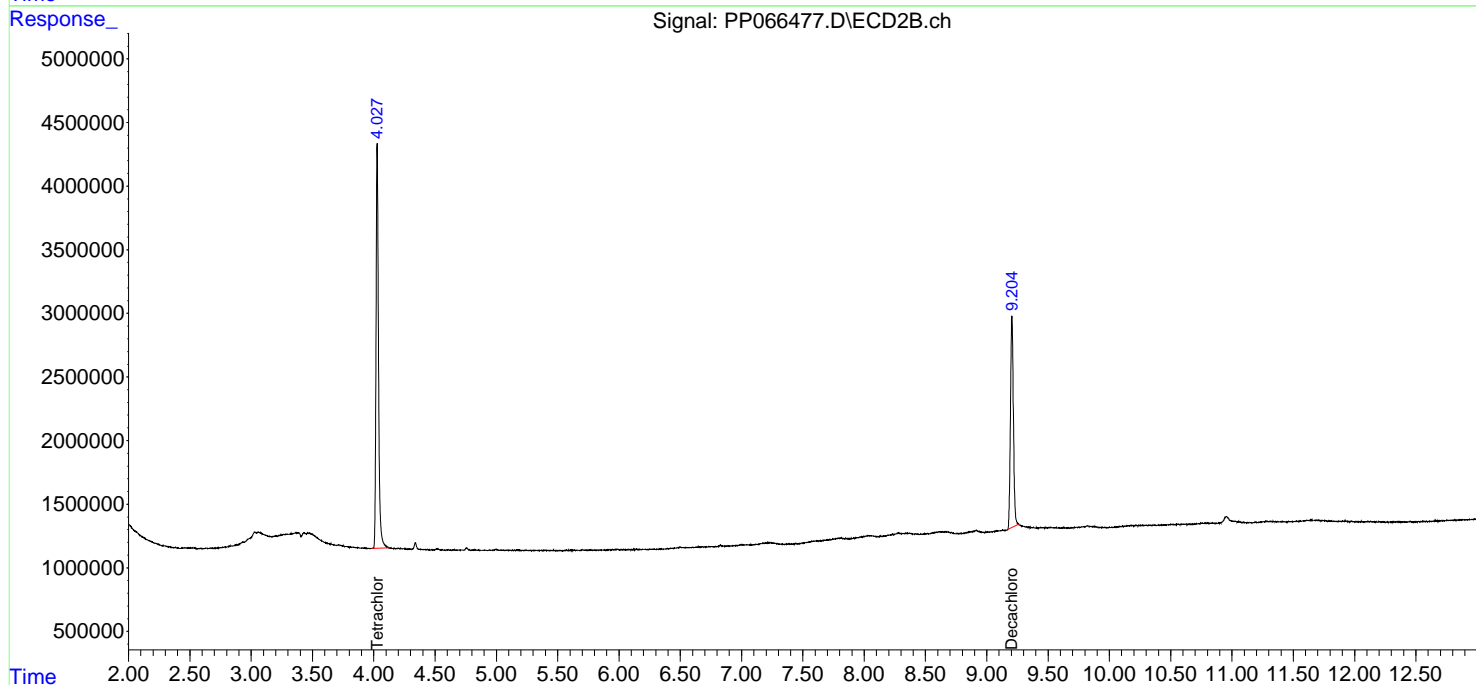
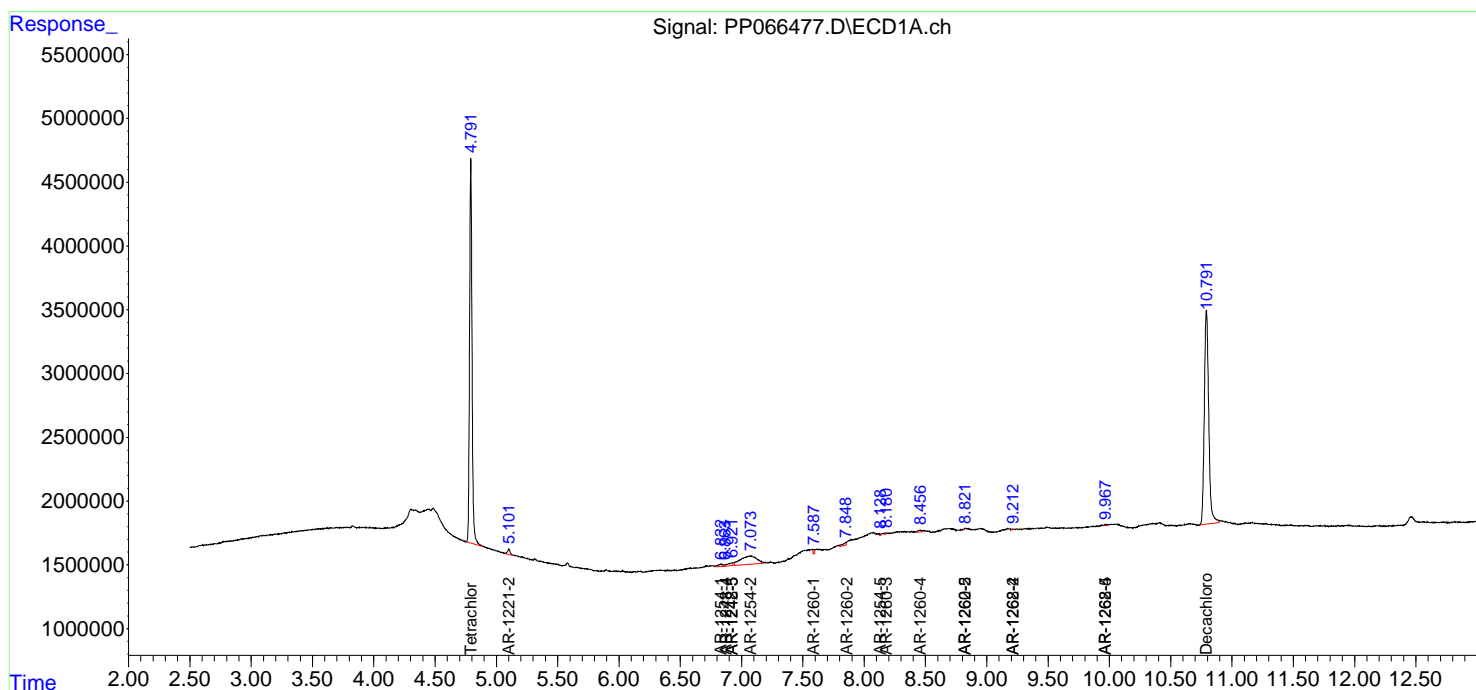
(f)=RT Delta > 1/2 Window (#)=Amounts differ by > 25% (m)=manual int.

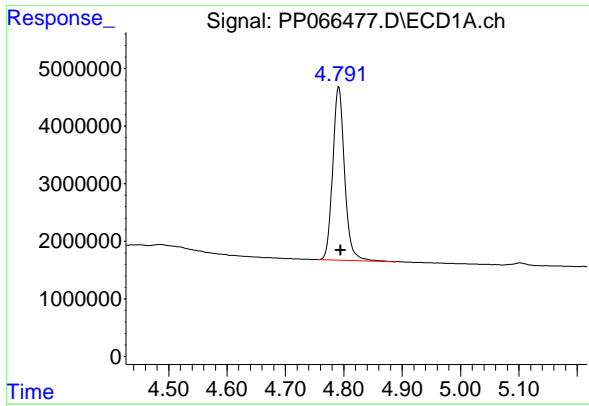
Data Path : Z:\pestpcbsrv\HPCHEM1\ECD_P\Data\PP072324\
 Data File : PP066477.D
 Signal(s) : Signal #1: ECD1A.ch Signal #2: ECD2B.ch
 Acq On : 23 Jul 2024 11:50
 Operator : YP\AJ
 Sample : PB162225BL
 Misc :
 ALS Vial : 7 Sample Multiplier: 1

Instrument :
 ECD_P
 ClientSampleId :
 PB162225BL

Integration File signal 1: autoint1.e
 Integration File signal 2: autoint2.e
 Quant Time: Jul 24 01:48:48 2024
 Quant Method : Z:\pestpcbsrv\HPCHEM1\ECD_P\methods\PP071624.M
 Quant Title : GC EXTRACTABLES
 QLast Update : Wed Jul 17 07:20:03 2024
 Response via : Initial Calibration
 Integrator: ChemStation

Volume Inj. : 2 µl
 Signal #1 Phase : ZB-MR1 Signal #2 Phase: ZB-MR2
 Signal #1 Info : 30Mx0.32mmx 0.50µm Signal #2 Info : 30M x 0.32mm x 0.25µm

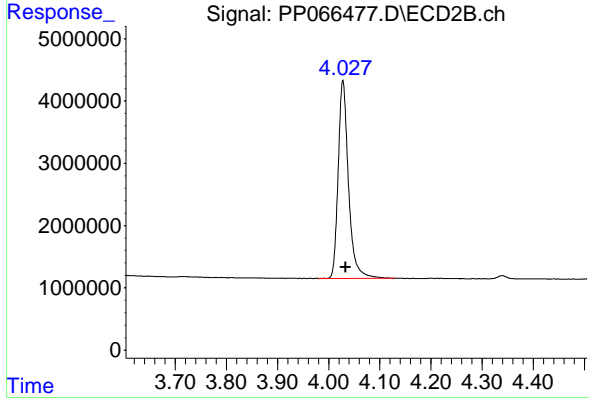




#1 Tetrachloro-m-xylene

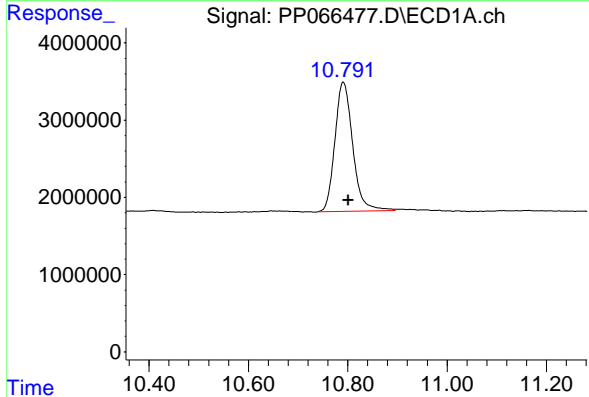
R.T.: 4.791 min
 Delta R.T.: -0.004 min
 Response: 42702632
 Conc: 24.24 ng/ml

Instrument :
 ECD_P
 ClientSampleId :
 PB162225BL



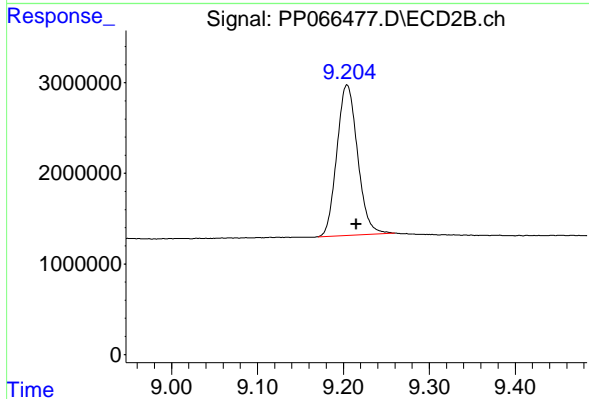
#1 Tetrachloro-m-xylene

R.T.: 4.028 min
 Delta R.T.: -0.005 min
 Response: 44329228
 Conc: 23.21 ng/ml



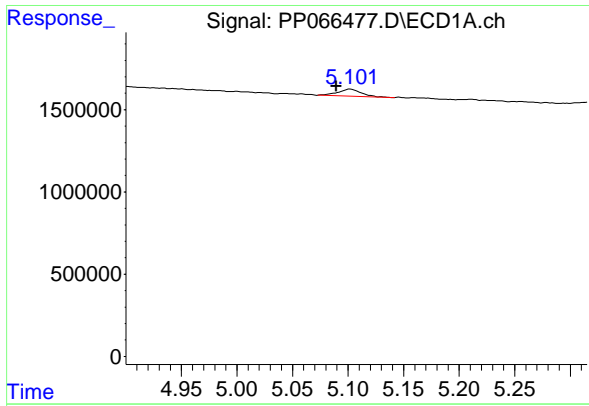
#2 Decachlorobiphenyl

R.T.: 10.791 min
 Delta R.T.: -0.010 min
 Response: 41627856
 Conc: 23.72 ng/ml



#2 Decachlorobiphenyl

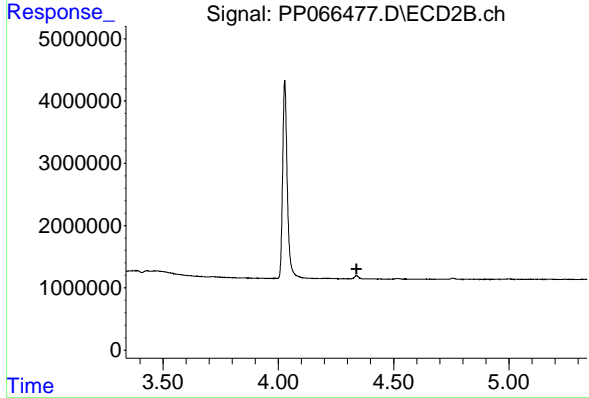
R.T.: 9.204 min
 Delta R.T.: -0.010 min
 Response: 27733468
 Conc: 21.74 ng/ml



#9 AR-1221-2

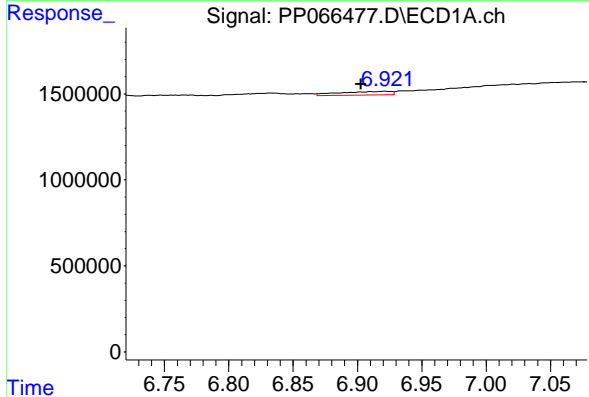
R.T.: 5.102 min
 Delta R.T.: 0.012 min
 Response: 634632
 Conc: 37.81 ng/ml

Instrument :
 ECD_P
 ClientSampleId :
 PB162225BL



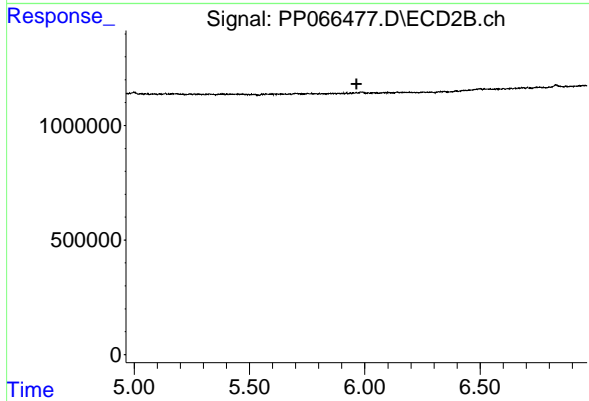
#9 AR-1221-2

R.T.: 0.000 min
 Exp R.T. : 4.339 min
 Response: 0
 Conc: N.D.



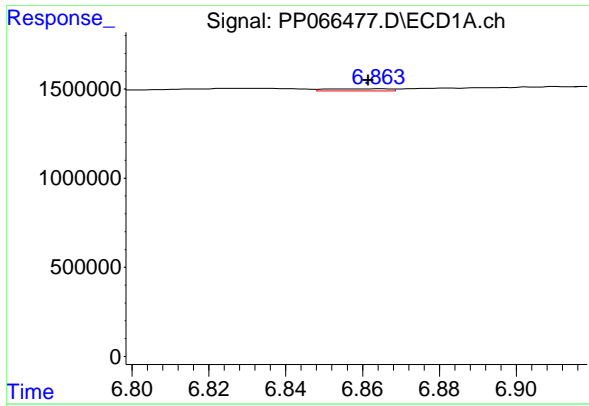
#20 AR-1242-5

R.T.: 6.922 min
 Delta R.T.: 0.019 min
 Response: 588627
 Conc: 11.83 ng/ml



#20 AR-1242-5

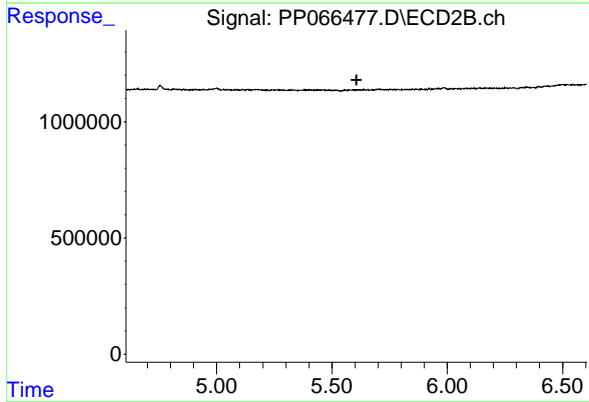
R.T.: 0.000 min
 Exp R.T. : 5.964 min
 Response: 0
 Conc: N.D.



#24 AR-1248-4

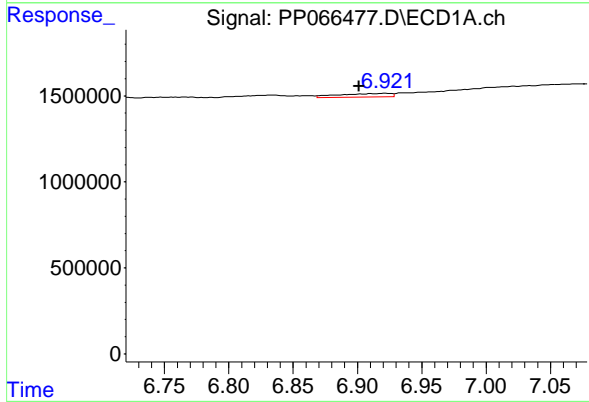
R.T.: 6.864 min
 Delta R.T.: 0.003 min
 Response: 134433
 Conc: 1.44 ng/ml

Instrument :
 ECD_P
 ClientSampleId :
 PB162225BL



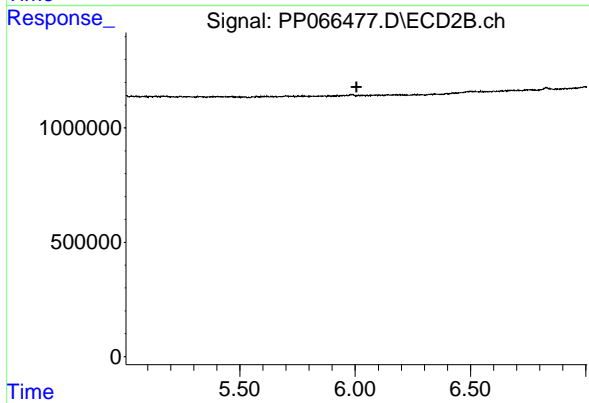
#24 AR-1248-4

R.T.: 0.000 min
 Exp R.T. : 5.606 min
 Response: 0
 Conc: N.D.



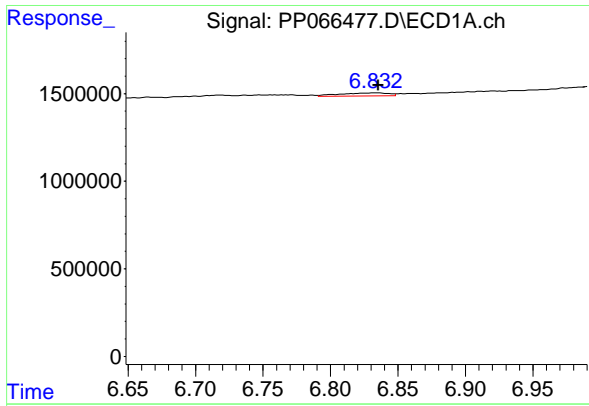
#25 AR-1248-5

R.T.: 6.922 min
 Delta R.T.: 0.020 min
 Response: 588627
 Conc: 6.38 ng/ml



#25 AR-1248-5

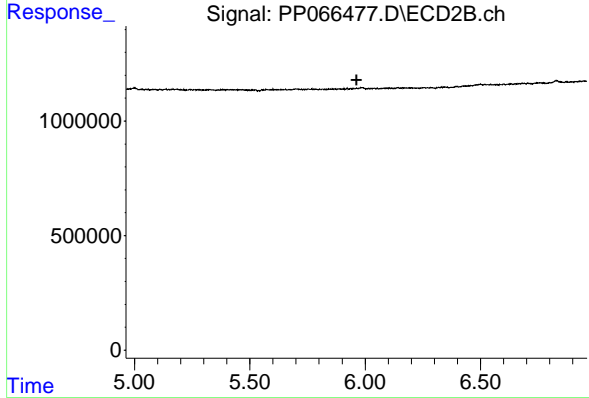
R.T.: 0.000 min
 Exp R.T. : 6.006 min
 Response: 0
 Conc: N.D.



#26 AR-1254-1

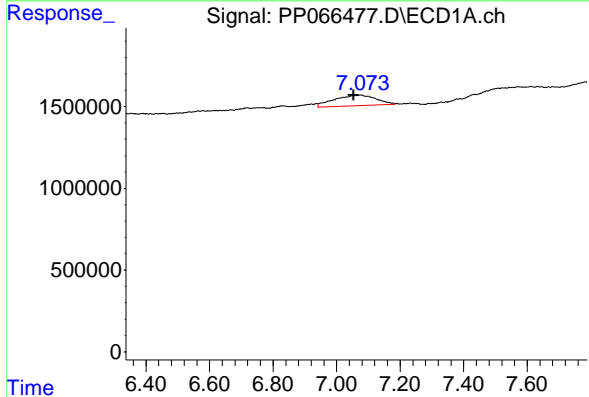
R.T.: 6.833 min
 Delta R.T.: -0.003 min
 Response: 436976
 Conc: 4.67 ng/ml

Instrument :
 ECD_P
 ClientSampleId :
 PB162225BL



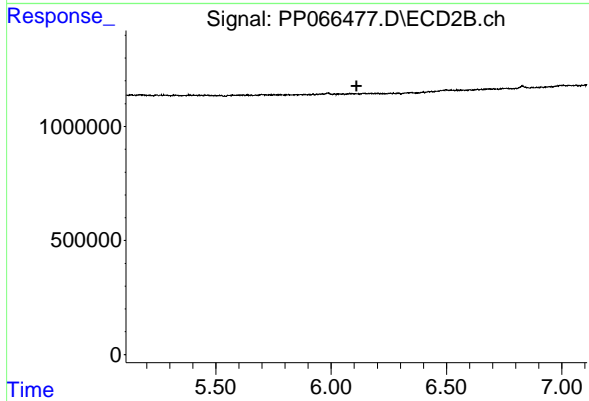
#26 AR-1254-1

R.T.: 0.000 min
 Exp R.T. : 5.963 min
 Response: 0
 Conc: N.D.



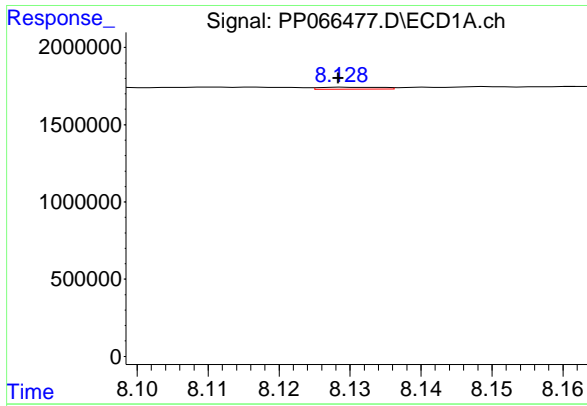
#27 AR-1254-2

R.T.: 7.075 min
 Delta R.T.: 0.022 min
 Response: 5951191
 Conc: 42.19 ng/ml



#27 AR-1254-2

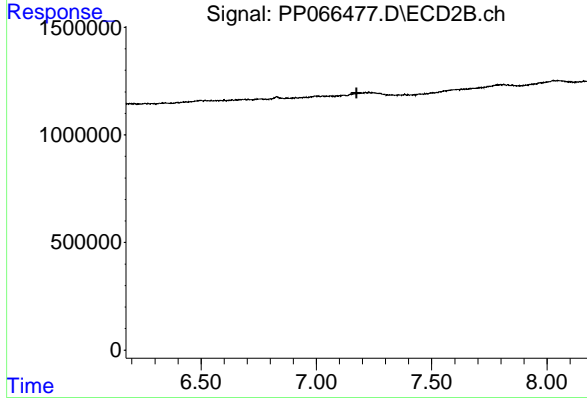
R.T.: 0.000 min
 Exp R.T. : 6.110 min
 Response: 0
 Conc: N.D.



#30 AR-1254-5

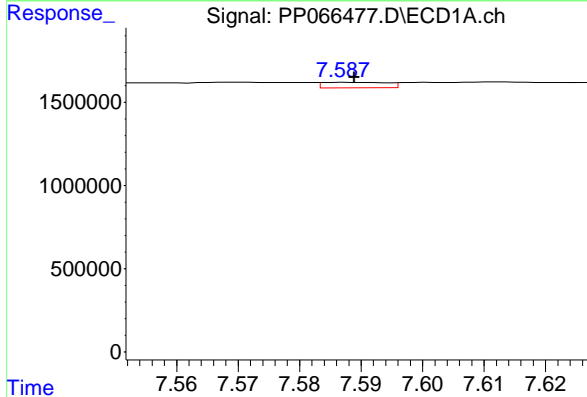
R.T.: 8.130 min
 Delta R.T.: 0.002 min
 Response: 75548
 Conc: 0.76 ng/ml

Instrument :
 ECD_P
 ClientSampleId :
 PB162225BL



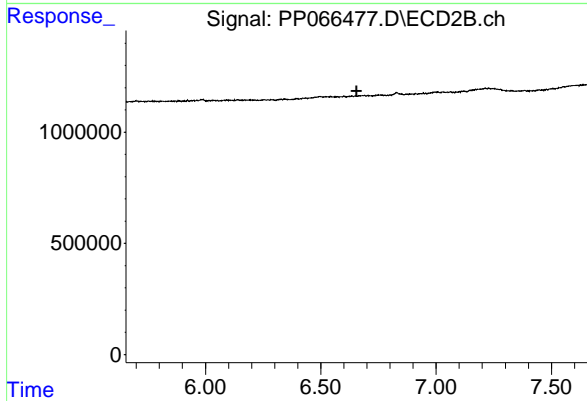
#30 AR-1254-5

R.T.: 0.000 min
 Exp R.T. : 7.174 min
 Response: 0
 Conc: N.D.



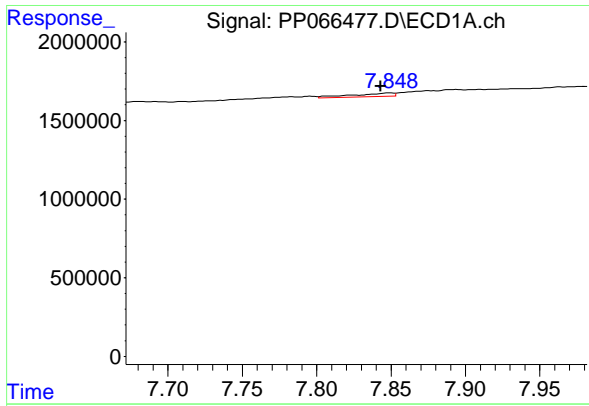
#31 AR-1260-1

R.T.: 7.587 min
 Delta R.T.: -0.001 min
 Response: 237046
 Conc: 2.24 ng/ml



#31 AR-1260-1

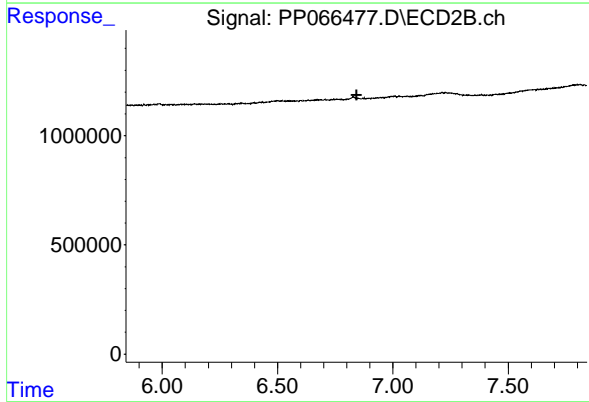
R.T.: 0.000 min
 Exp R.T. : 6.655 min
 Response: 0
 Conc: N.D.



#32 AR-1260-2

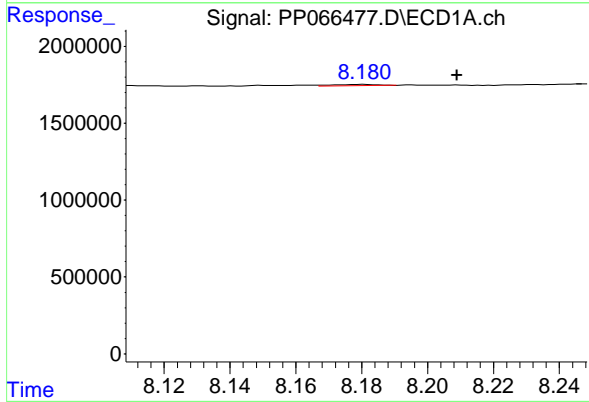
R.T.: 7.849 min
 Delta R.T.: 0.006 min
 Response: 417620
 Conc: 3.62 ng/ml

Instrument :
 ECD_P
 ClientSampleId :
 PB162225BL



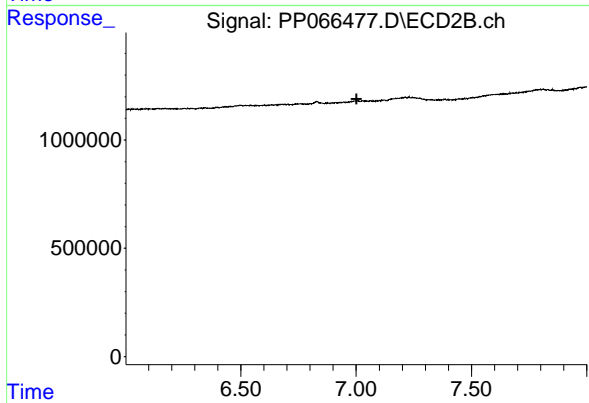
#32 AR-1260-2

R.T.: 0.000 min
 Exp R.T. : 6.842 min
 Response: 0
 Conc: N.D.



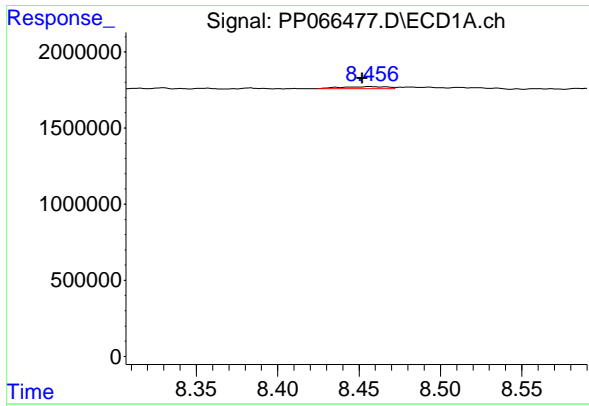
#33 AR-1260-3

R.T.: 8.181 min
 Delta R.T.: -0.028 min
 Response: 84789
 Conc: 1.07 ng/ml



#33 AR-1260-3

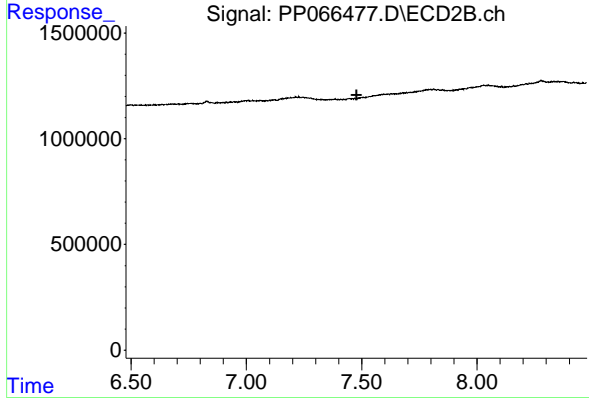
R.T.: 0.000 min
 Exp R.T. : 7.001 min
 Response: 0
 Conc: N.D.



#34 AR-1260-4

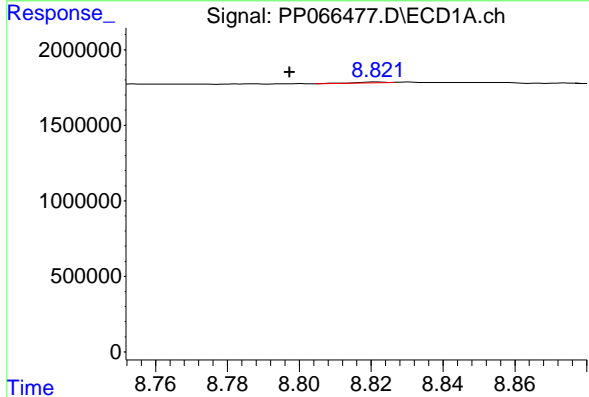
R.T.: 8.457 min
 Delta R.T.: 0.005 min
 Response: 266409
 Conc: 3.06 ng/ml

Instrument :
 ECD_P
 ClientSampleId :
 PB162225BL



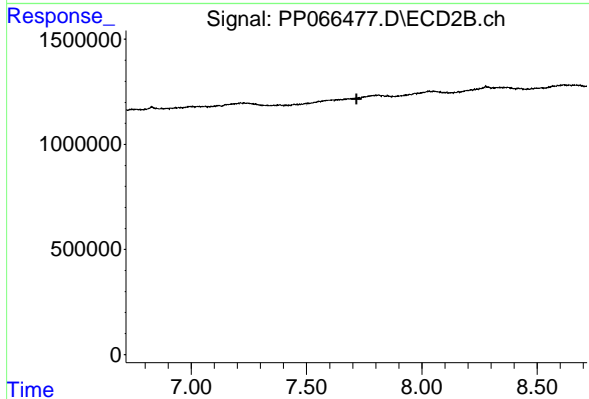
#34 AR-1260-4

R.T.: 0.000 min
 Exp R.T. : 7.477 min
 Response: 0
 Conc: N.D.



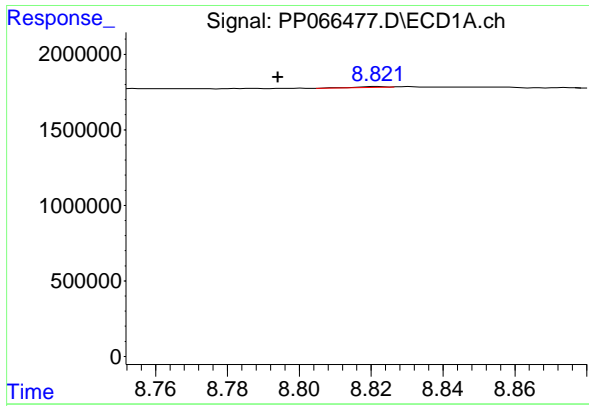
#35 AR-1260-5

R.T.: 8.822 min
 Delta R.T.: 0.024 min
 Response: 27364
 Conc: 0.18 ng/ml



#35 AR-1260-5

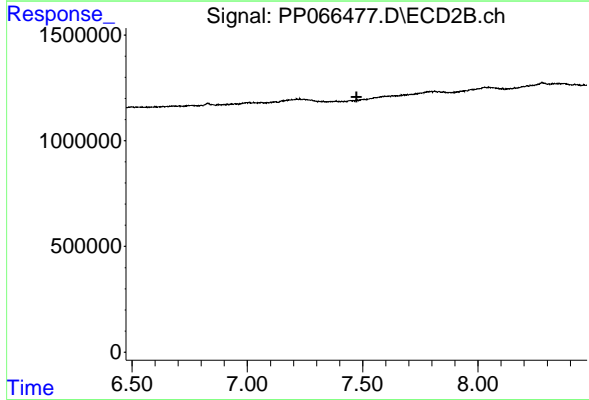
R.T.: 0.000 min
 Exp R.T. : 7.716 min
 Response: 0
 Conc: N.D.



#37 AR-1262-2

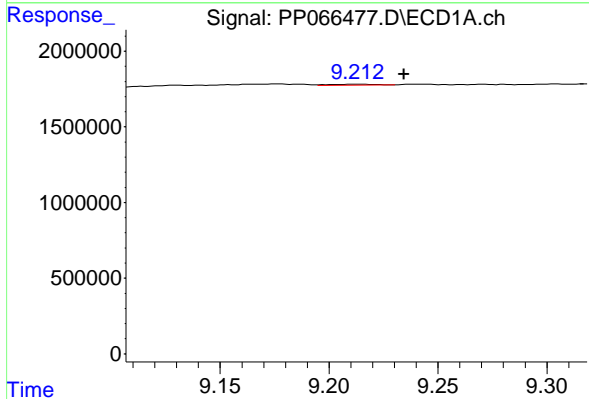
R.T.: 8.822 min
 Delta R.T.: 0.028 min
 Response: 27364
 Conc: 0.14 ng/ml

Instrument :
 ECD_P
 ClientSampleId :
 PB162225BL



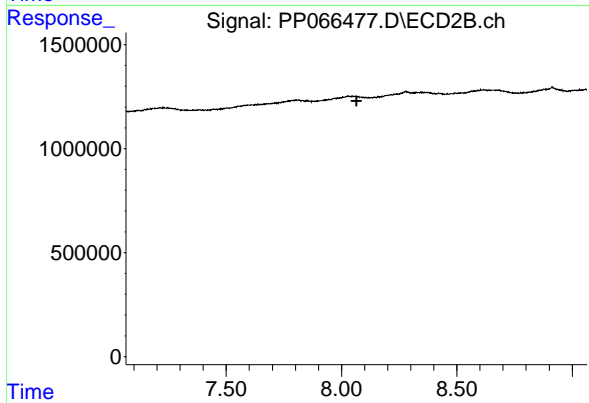
#37 AR-1262-2

R.T.: 0.000 min
 Exp R.T. : 7.474 min
 Response: 0
 Conc: N.D.



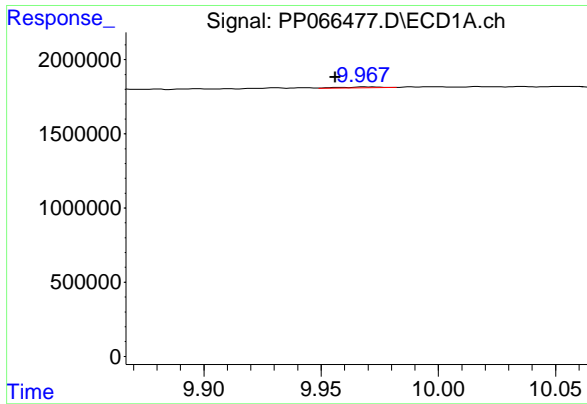
#39 AR-1262-4

R.T.: 9.213 min
 Delta R.T.: -0.021 min
 Response: 92319
 Conc: 0.82 ng/ml



#39 AR-1262-4

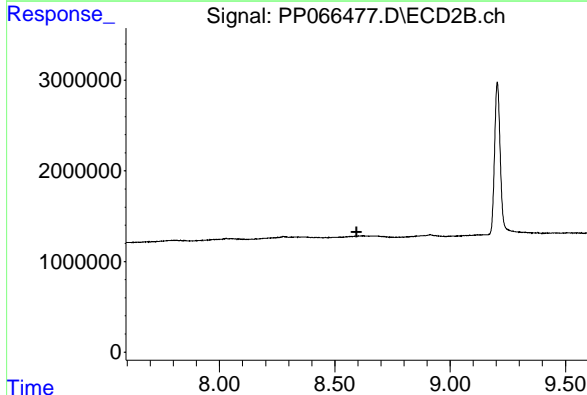
R.T.: 0.000 min
 Exp R.T. : 8.065 min
 Response: 0
 Conc: N.D.



#40 AR-1262-5

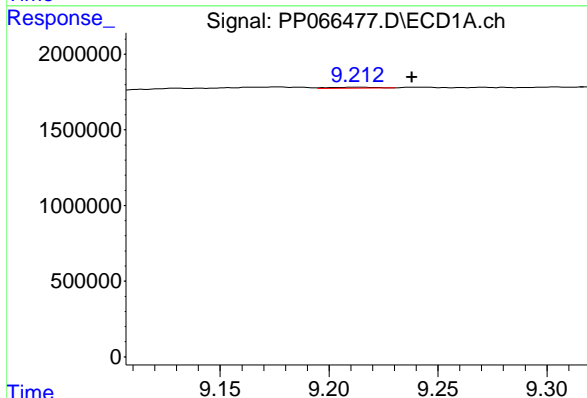
R.T.: 9.968 min
 Delta R.T.: 0.012 min
 Response: 65557
 Conc: 1.01 ng/ml

Instrument :
 ECD_P
 ClientSampleId :
 PB162225BL



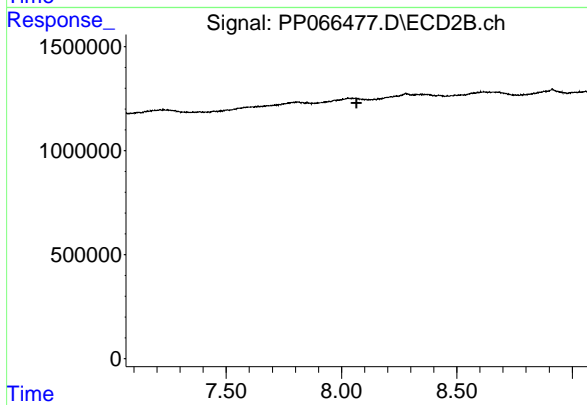
#40 AR-1262-5

R.T.: 0.000 min
 Exp R.T. : 8.594 min
 Response: 0
 Conc: N.D.



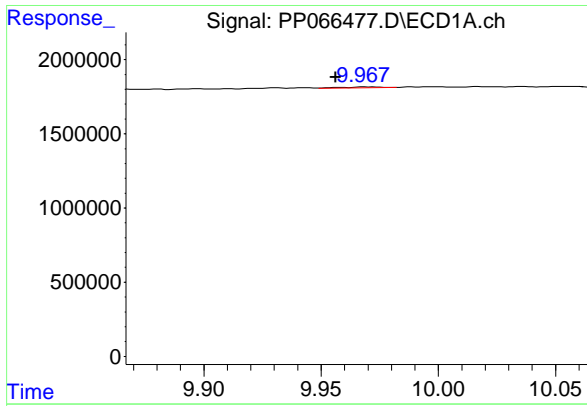
#42 AR-1268-2

R.T.: 9.213 min
 Delta R.T.: -0.025 min
 Response: 92319
 Conc: 0.43 ng/ml



#42 AR-1268-2

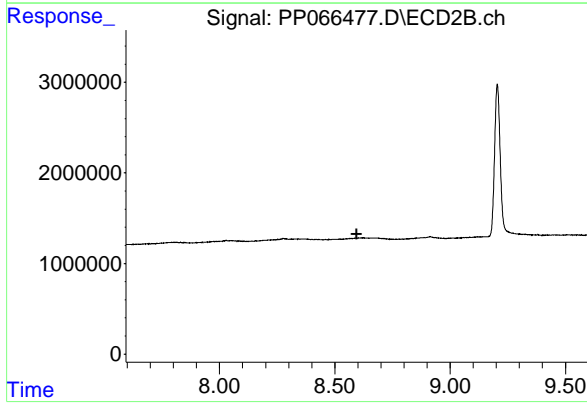
R.T.: 0.000 min
 Exp R.T. : 8.065 min
 Response: 0
 Conc: N.D.



#44 AR-1268-4

R.T.: 9.968 min
 Delta R.T.: 0.012 min
 Response: 65557
 Conc: 0.94 ng/ml

Instrument :
 ECD_P
 ClientSampleId :
 PB162225BL



#44 AR-1268-4

R.T.: 0.000 min
 Exp R.T. : 8.594 min
 Response: 0
 Conc: N.D.