

Data Path : Z:\pestpcbsrv\HPCHEM1\ECD\_P\Data\PP072522\  
 Data File : PP049816.D  
 Signal(s) : Signal #1: ECD1A.ch Signal #2: ECD2B.ch  
 Acq On : 26 Jul 2022 03:44  
 Operator : YP\AJ  
 Sample : AR1660CCC500  
 Misc :  
 ALS Vial : 3 Sample Multiplier: 1

Instrument :  
 ECD\_P  
 ClientSampleId :  
 AR1660CCC500

Integration File signal 1: autoint1.e  
 Integration File signal 2: autoint2.e  
 Quant Time: Jul 26 05:31:51 2022  
 Quant Method : Z:\pestpcbsrv\HPCHEM1\ECD\_P\methods\PP071422.M  
 Quant Title : GC EXTRACTABLES  
 QLast Update : Thu Jul 14 06:08:44 2022  
 Response via : Initial Calibration  
 Integrator: ChemStation

Volume Inj. : 2 µl  
 Signal #1 Phase : ZB-MR1 Signal #2 Phase: ZB-MR2  
 Signal #1 Info : 30Mx0.32mmx 0.50µ Signal #2 Info : 30M x 0.32mm x 0.25µm

Compound	RT#1	RT#2	Resp#1	Resp#2	ng/ml	ng/ml
-----						
System Monitoring Compounds						
1) SA Tetrachlo...	4.348	3.598	77943162	136.6E6	53.712	55.890
2) SA Decachlor...	10.095	8.562	72087285	57941106	50.966	49.752
Target Compounds						
3) L1 AR-1016-1	5.525	4.669	29850492	46103657	528.354	517.207
4) L1 AR-1016-2	5.547	4.688	43565042	64529452	541.805	512.951
5) L1 AR-1016-3	5.609	4.863	26437274	34081792	539.832	518.637
6) L1 AR-1016-4	5.709	4.903	22103270	27042743	546.207	508.717
7) L1 AR-1016-5	6.003	5.115	21203889	34619054	518.056	503.501
31) L7 AR-1260-1	7.130	6.142	39800088	49919530	526.374	476.328
32) L7 AR-1260-2	7.389	6.329	47641324	57816879	503.264	480.503
33) L7 AR-1260-3	7.747	6.482	32579724	52694627	520.273	465.690
34) L7 AR-1260-4	7.975	6.952	39723361	36475960	513.389	476.860
35) L7 AR-1260-5	8.296	7.193	74034820	80121332	481.527	468.548

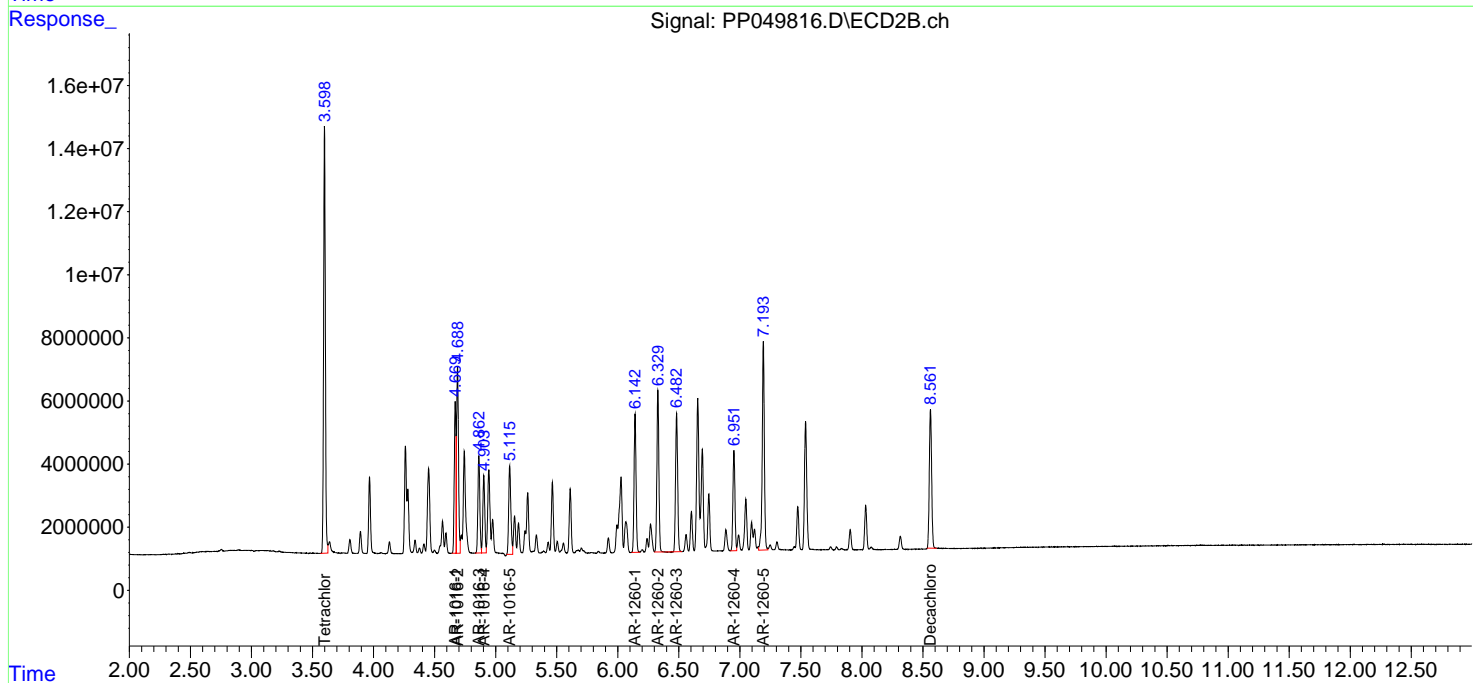
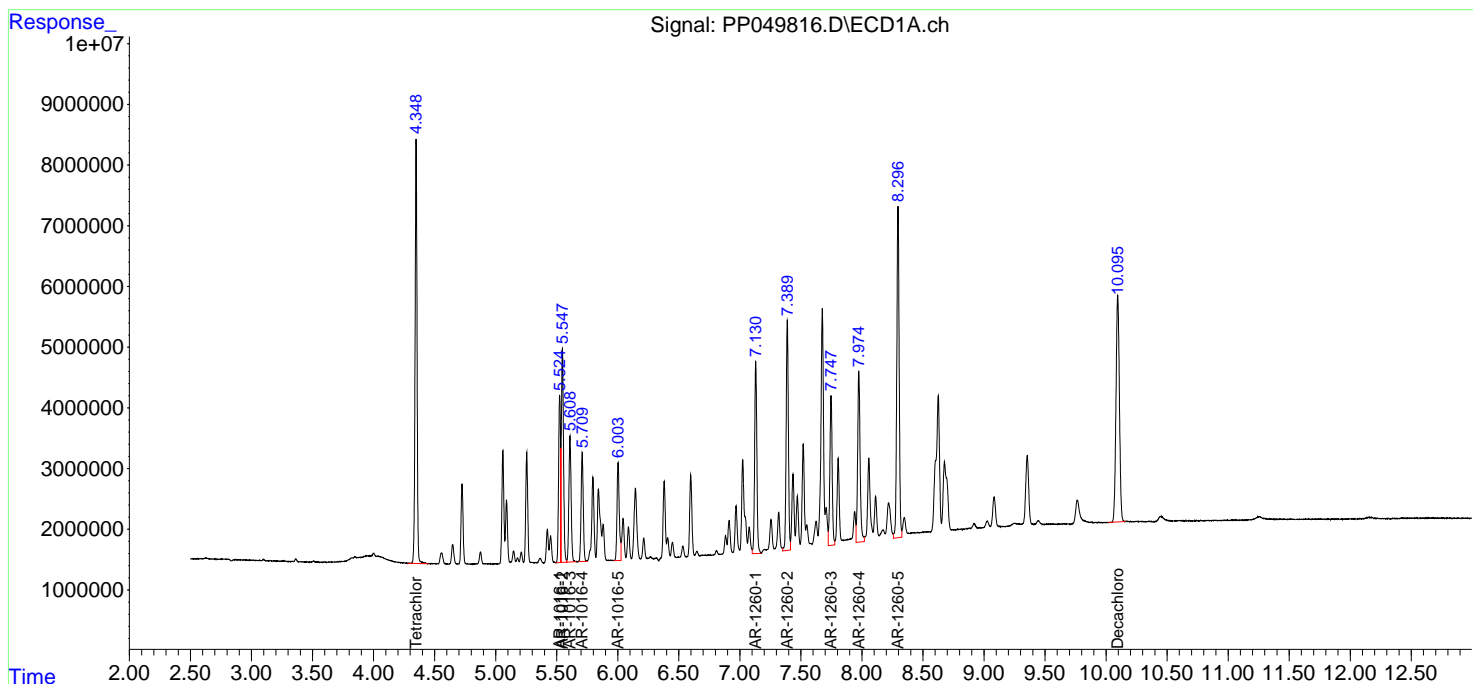
(f)=RT Delta > 1/2 Window (#)=Amounts differ by > 25% (m)=manual int.

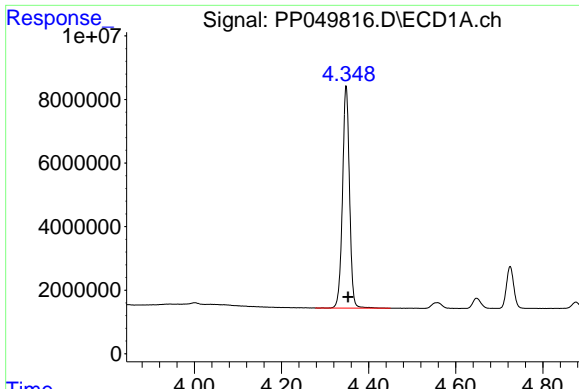
Data Path : Z:\pestpcbsrv\HPCHEM1\ECD\_P\Data\PP072522\  
 Data File : PP049816.D  
 Signal(s) : Signal #1: ECD1A.ch Signal #2: ECD2B.ch  
 Acq On : 26 Jul 2022 03:44  
 Operator : YP\AJ  
 Sample : AR1660CCC500  
 Misc :  
 ALS Vial : 3 Sample Multiplier: 1

Instrument :  
 ECD\_P  
 ClientSampleId :  
 AR1660CCC500

Integration File signal 1: autoint1.e  
 Integration File signal 2: autoint2.e  
 Quant Time: Jul 26 05:31:51 2022  
 Quant Method : Z:\pestpcbsrv\HPCHEM1\ECD\_P\methods\PP071422.M  
 Quant Title : GC EXTRACTABLES  
 QLast Update : Thu Jul 14 06:08:44 2022  
 Response via : Initial Calibration  
 Integrator: ChemStation

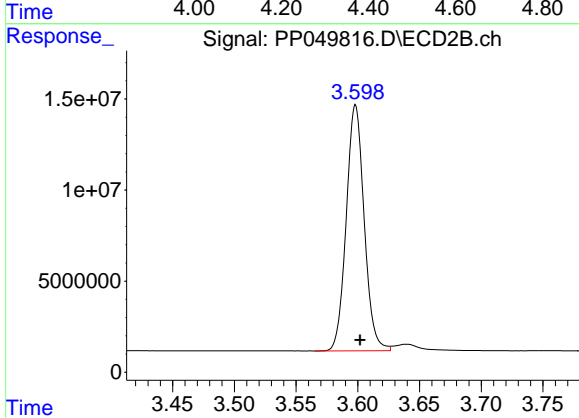
Volume Inj. : 2 µl  
 Signal #1 Phase : ZB-MR1 Signal #2 Phase: ZB-MR2  
 Signal #1 Info : 30Mx0.32mmx 0.50µ Signal #2 Info : 30M x 0.32mm x 0.25µm



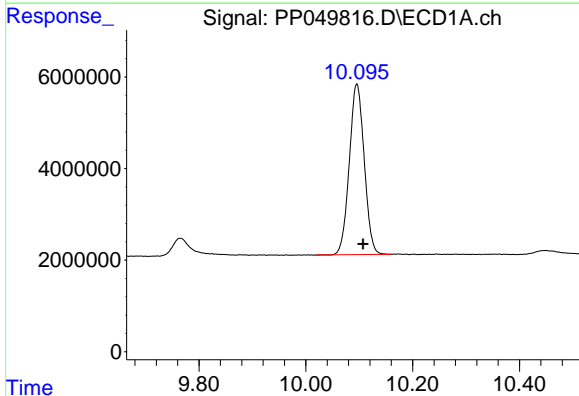


#1 Tetrachloro-m-xylene  
 R.T.: 4.348 min  
 Delta R.T.: -0.005 min  
 Response: 77943162  
 Conc: 53.71 ng/ml

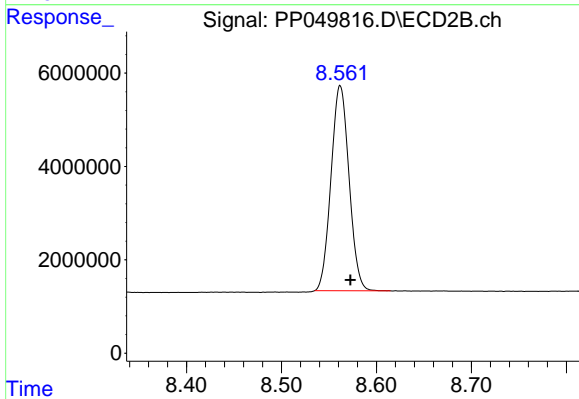
Instrument :  
 ECD\_P  
 ClientSampleId :  
 AR1660CCC500



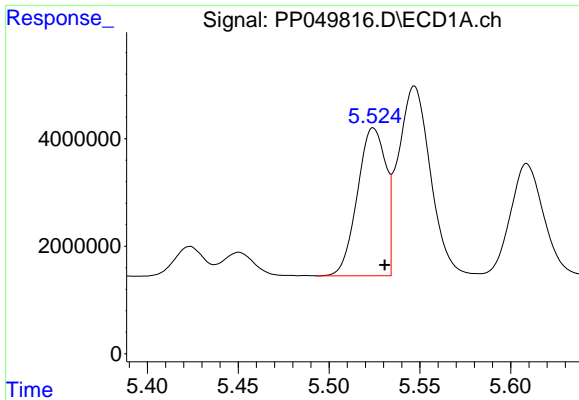
#1 Tetrachloro-m-xylene  
 R.T.: 3.598 min  
 Delta R.T.: -0.004 min  
 Response: 136613874  
 Conc: 55.89 ng/ml



#2 Decachlorobiphenyl  
 R.T.: 10.095 min  
 Delta R.T.: -0.012 min  
 Response: 72087285  
 Conc: 50.97 ng/ml



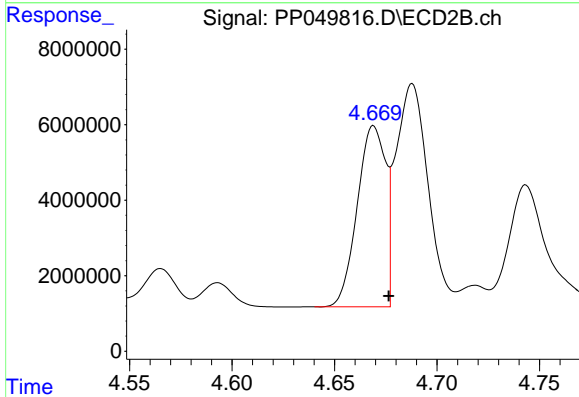
#2 Decachlorobiphenyl  
 R.T.: 8.562 min  
 Delta R.T.: -0.011 min  
 Response: 57941106  
 Conc: 49.75 ng/ml



#3 AR-1016-1

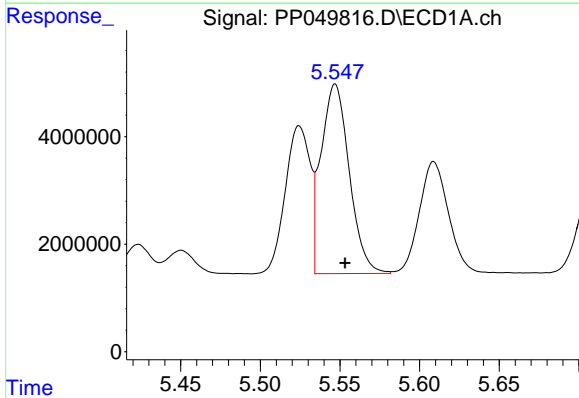
R.T.: 5.525 min  
 Delta R.T.: -0.006 min  
 Response: 29850492  
 Conc: 528.35 ng/ml

Instrument :  
 ECD\_P  
 ClientSampleId :  
 AR1660CCC500



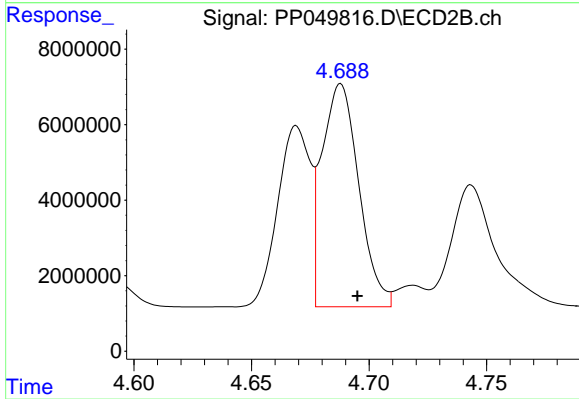
#3 AR-1016-1

R.T.: 4.669 min  
 Delta R.T.: -0.007 min  
 Response: 46103657  
 Conc: 517.21 ng/ml



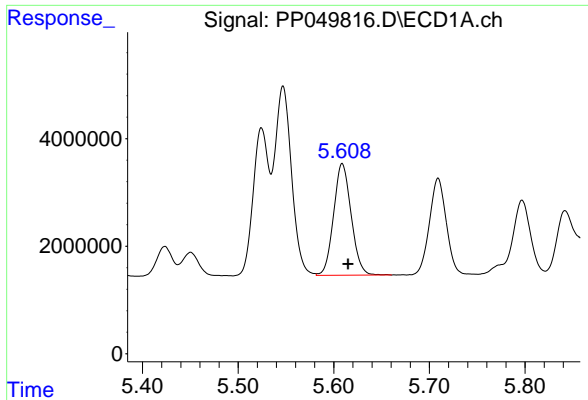
#4 AR-1016-2

R.T.: 5.547 min  
 Delta R.T.: -0.006 min  
 Response: 43565042  
 Conc: 541.81 ng/ml



#4 AR-1016-2

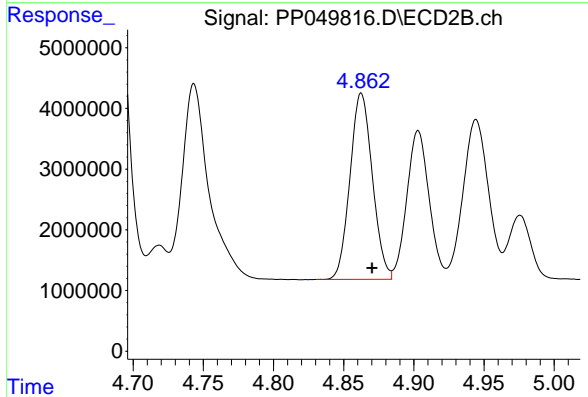
R.T.: 4.688 min  
 Delta R.T.: -0.007 min  
 Response: 64529452  
 Conc: 512.95 ng/ml



#5 AR-1016-3

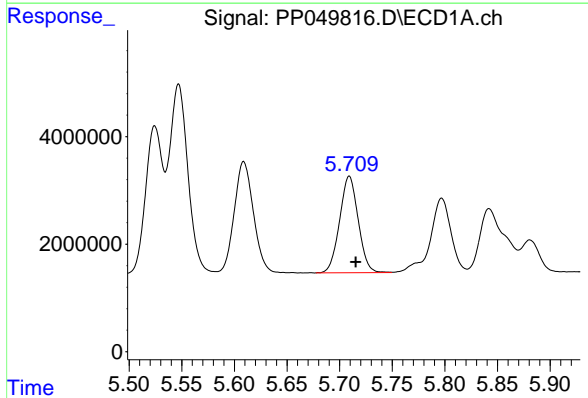
R.T.: 5.609 min  
 Delta R.T.: -0.006 min  
 Response: 26437274  
 Conc: 539.83 ng/ml

Instrument :  
 ECD\_P  
 ClientSampleId :  
 AR1660CCC500



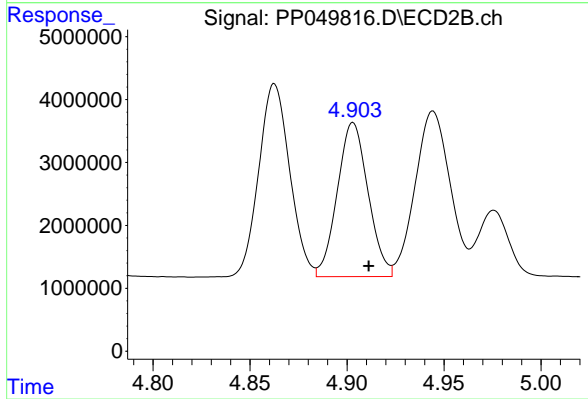
#5 AR-1016-3

R.T.: 4.863 min  
 Delta R.T.: -0.008 min  
 Response: 34081792  
 Conc: 518.64 ng/ml



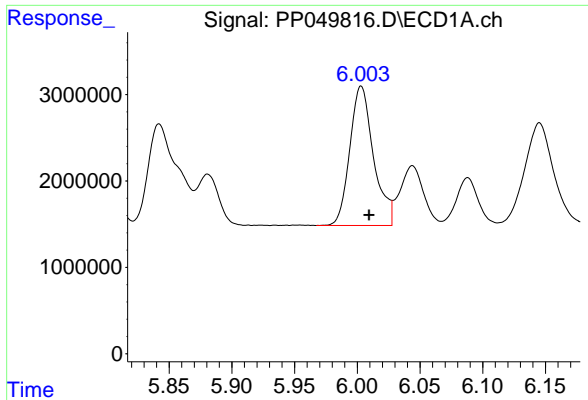
#6 AR-1016-4

R.T.: 5.709 min  
 Delta R.T.: -0.006 min  
 Response: 22103270  
 Conc: 546.21 ng/ml



#6 AR-1016-4

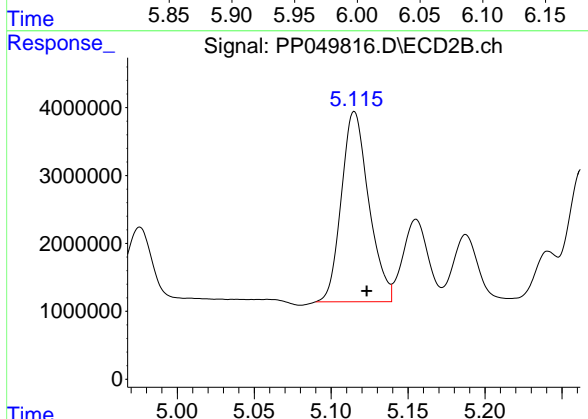
R.T.: 4.903 min  
 Delta R.T.: -0.008 min  
 Response: 27042743  
 Conc: 508.72 ng/ml



#7 AR-1016-5

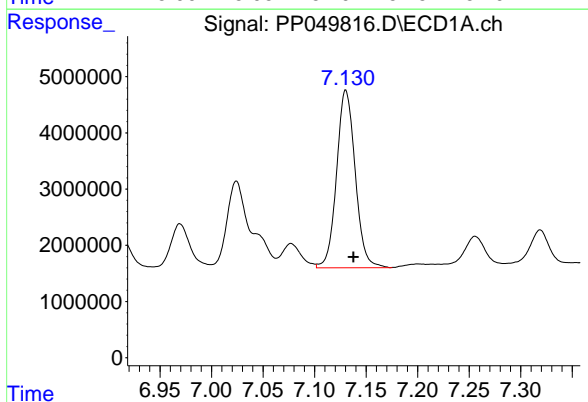
R.T.: 6.003 min  
 Delta R.T.: -0.006 min  
 Response: 21203889  
 Conc: 518.06 ng/ml

Instrument :  
 ECD\_P  
 ClientSampleId :  
 AR1660CCC500



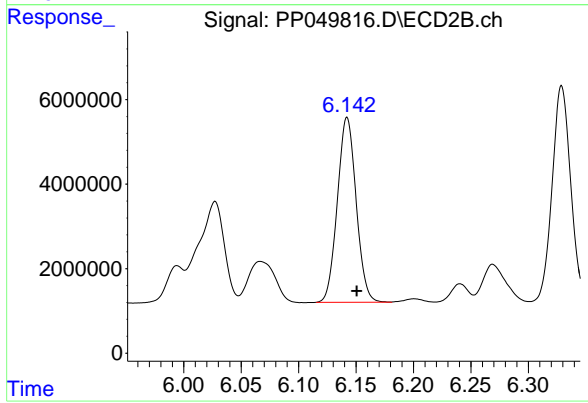
#7 AR-1016-5

R.T.: 5.115 min  
 Delta R.T.: -0.008 min  
 Response: 34619054  
 Conc: 503.50 ng/ml



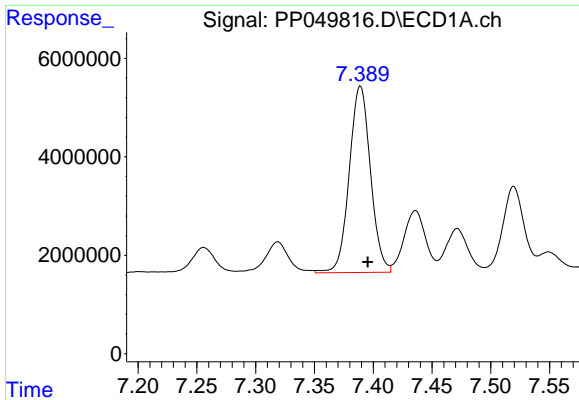
#31 AR-1260-1

R.T.: 7.130 min  
 Delta R.T.: -0.007 min  
 Response: 39800088  
 Conc: 526.37 ng/ml



#31 AR-1260-1

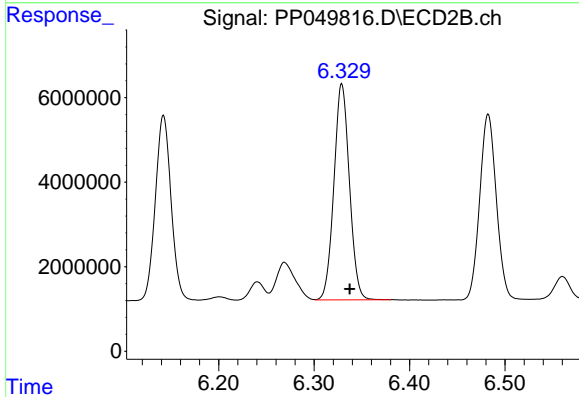
R.T.: 6.142 min  
 Delta R.T.: -0.008 min  
 Response: 49919530  
 Conc: 476.33 ng/ml



#32 AR-1260-2

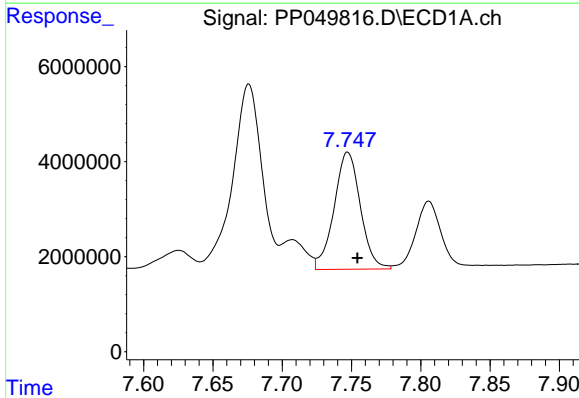
R.T.: 7.389 min  
 Delta R.T.: -0.006 min  
 Response: 47641324  
 Conc: 503.26 ng/ml

Instrument :  
 ECD\_P  
 ClientSampleId :  
 AR1660CCC500



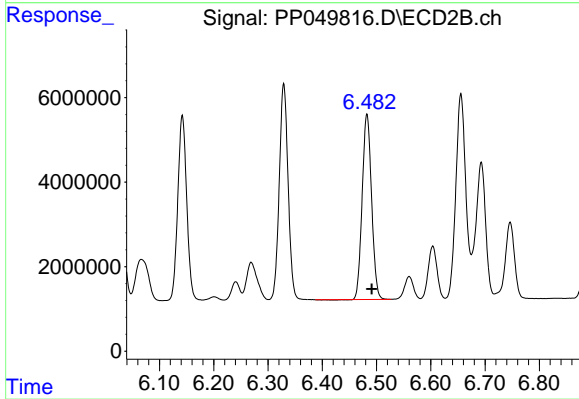
#32 AR-1260-2

R.T.: 6.329 min  
 Delta R.T.: -0.008 min  
 Response: 57816879  
 Conc: 480.50 ng/ml



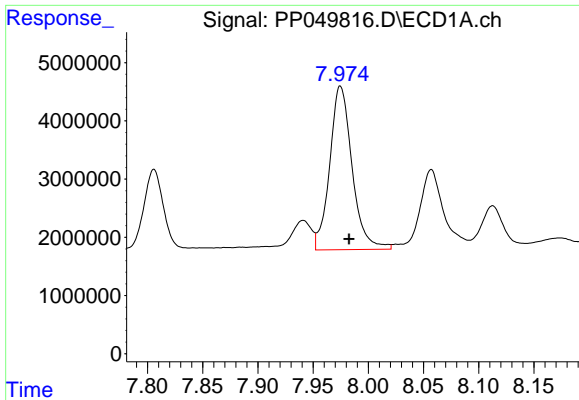
#33 AR-1260-3

R.T.: 7.747 min  
 Delta R.T.: -0.007 min  
 Response: 32579724  
 Conc: 520.27 ng/ml



#33 AR-1260-3

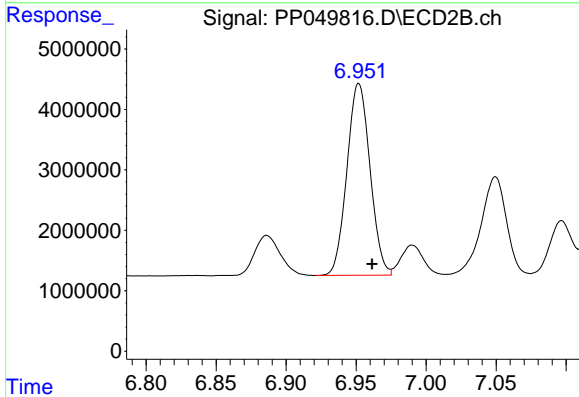
R.T.: 6.482 min  
 Delta R.T.: -0.009 min  
 Response: 52694627  
 Conc: 465.69 ng/ml



#34 AR-1260-4

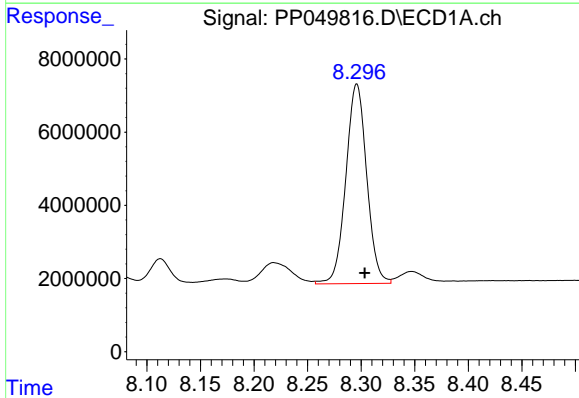
R.T.: 7.975 min  
 Delta R.T.: -0.008 min  
 Response: 39723361  
 Conc: 513.39 ng/ml

Instrument :  
 ECD\_P  
 ClientSampleId :  
 AR1660CCC500



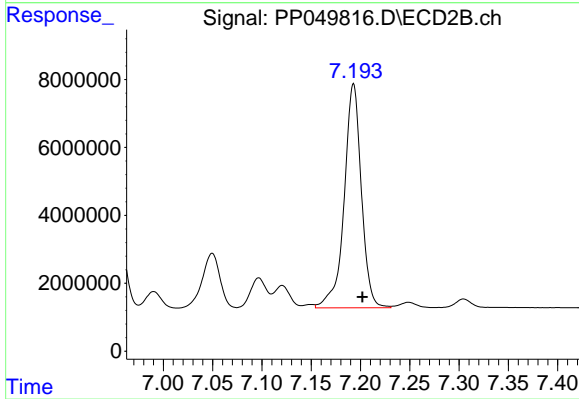
#34 AR-1260-4

R.T.: 6.952 min  
 Delta R.T.: -0.010 min  
 Response: 36475960  
 Conc: 476.86 ng/ml



#35 AR-1260-5

R.T.: 8.296 min  
 Delta R.T.: -0.007 min  
 Response: 74034820  
 Conc: 481.53 ng/ml



#35 AR-1260-5

R.T.: 7.193 min  
 Delta R.T.: -0.009 min  
 Response: 80121332  
 Conc: 468.55 ng/ml