

Data Path : Z:\pestpcbsrv\HPCHEM1\ECD\_P\Data\PP072522\  
 Data File : PP049819.D  
 Signal(s) : Signal #1: ECD1A.ch Signal #2: ECD2B.ch  
 Acq On : 26 Jul 2022 04:34  
 Operator : YP\AJ  
 Sample : AR1254CCC500  
 Misc :  
 ALS Vial : 6 Sample Multiplier: 1

**Instrument :**  
 ECD\_P  
**ClientSampleId :**  
 AR1254CCC500

**Manual Integrations**  
**APPROVED**  
 Reviewed By :Yogesh Patel

Integration File signal 1: autoint1.e  
 Integration File signal 2: autoint2.e  
 Quant Time: Jul 26 07:28:20 2022  
 Quant Method : Z:\pestpcbsrv\HPCHEM1\ECD\_P\methods\PP071422.M  
 Quant Title : GC EXTRACTABLES  
 QLast Update : Thu Jul 14 06:08:44 2022  
 Response via : Initial Calibration  
 Integrator: ChemStation

07/26/2022  
 Supervised By :Ankita Jodhani  
 07/26/2022

Volume Inj. : 2 µl  
 Signal #1 Phase : ZB-MR1 Signal #2 Phase: ZB-MR2  
 Signal #1 Info : 30Mx0.32mmx 0.50µ Signal #2 Info : 30M x 0.32mm x 0.25µm

| Compound                    | RT#1   | RT#2  | Resp#1   | Resp#2   | ng/ml    | ng/ml   |
|-----------------------------|--------|-------|----------|----------|----------|---------|
| -----                       |        |       |          |          |          |         |
| System Monitoring Compounds |        |       |          |          |          |         |
| 1) SA Tetrachlo...          | 4.349  | 3.599 | 78321992 | 141.9E6  | 53.973   | 58.062  |
| 2) SA Decachlor...          | 10.097 | 8.563 | 75116576 | 61210693 | 53.108   | 52.560  |
| Target Compounds            |        |       |          |          |          |         |
| 26) L6 AR-1254-1            | 6.382  | 5.465 | 35588446 | 61578849 | 565.064  | 485.519 |
| 27) L6 AR-1254-2            | 6.601  | 5.611 | 52985556 | 53053797 | 543.875  | 479.990 |
| 28) L6 AR-1254-3            | 6.971  | 6.014 | 55804202 | 75725450 | 540.094  | 465.217 |
| 29) L6 AR-1254-4            | 7.258  | 6.241 | 43300078 | 44710100 | 540.886  | 462.086 |
| 30) L6 AR-1254-5            | 7.677  | 6.657 | 44563953 | 61787365 | 501.383m | 466.265 |
| -----                       |        |       |          |          |          |         |

(f)=RT Delta > 1/2 Window (#)=Amounts differ by > 25% (m)=manual int.

Data Path : Z:\pestpcbsrv\HPCHEM1\ECD\_P\Data\PP072522\  
 Data File : PP049819.D  
 Signal(s) : Signal #1: ECD1A.ch Signal #2: ECD2B.ch  
 Acq On : 26 Jul 2022 04:34  
 Operator : YP\AJ  
 Sample : AR1254CCC500  
 Misc :  
 ALS Vial : 6 Sample Multiplier: 1

Instrument :  
 ECD\_P  
 ClientSampleId :  
 AR1254CCC500

Manual Integrations  
**APPROVED**

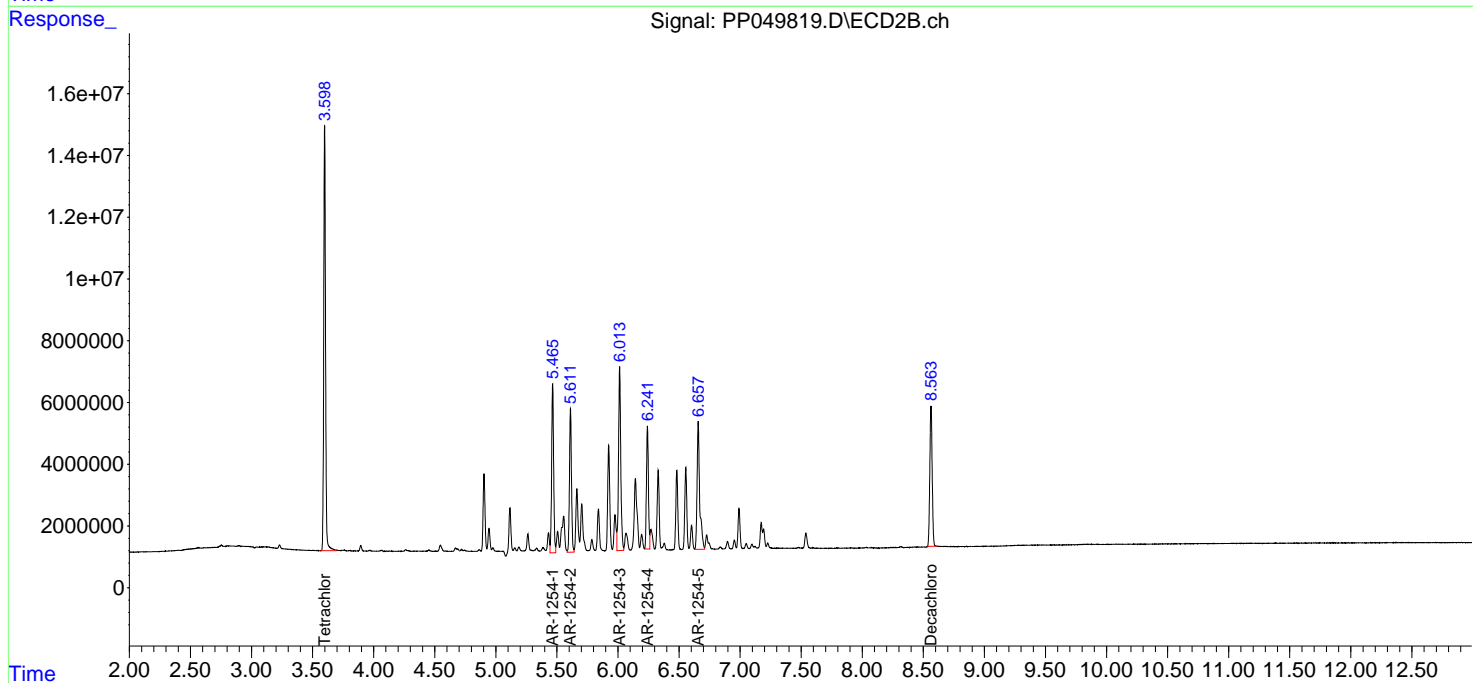
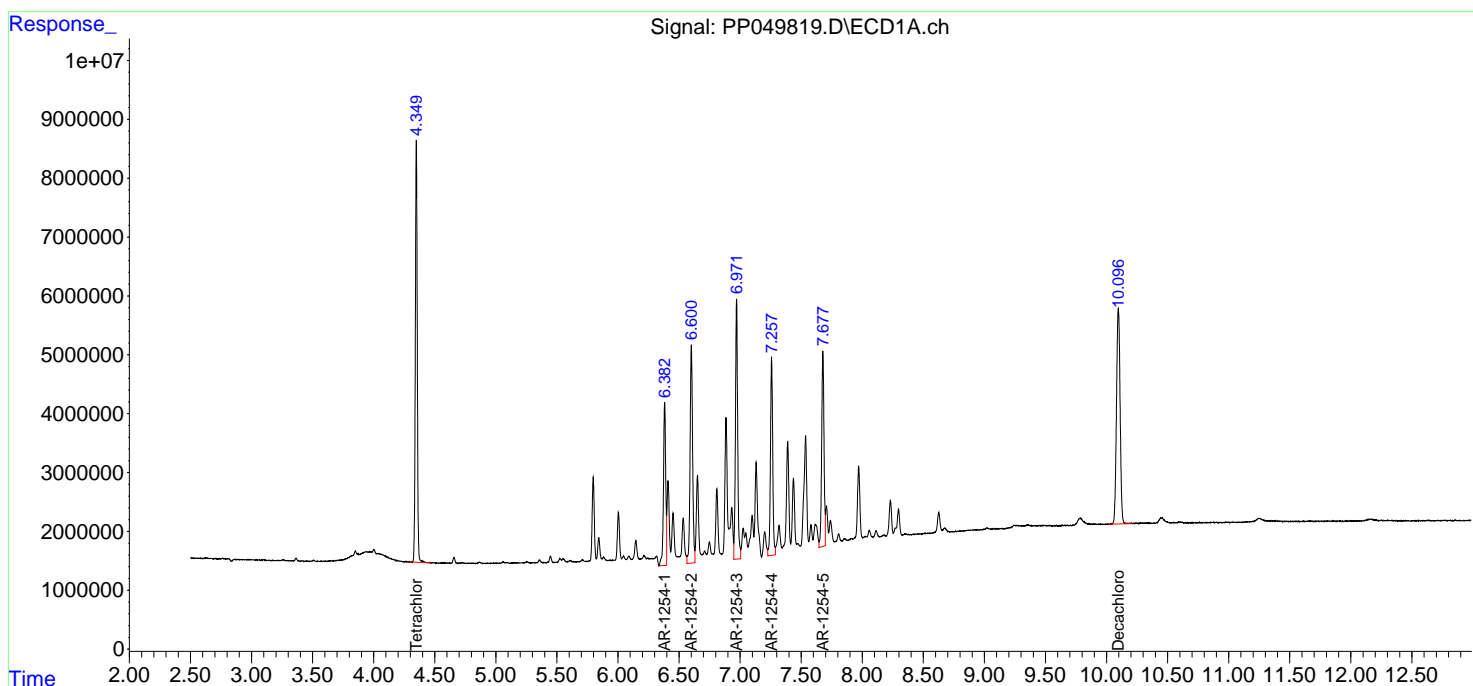
Reviewed By :Yogesh  
 Patel

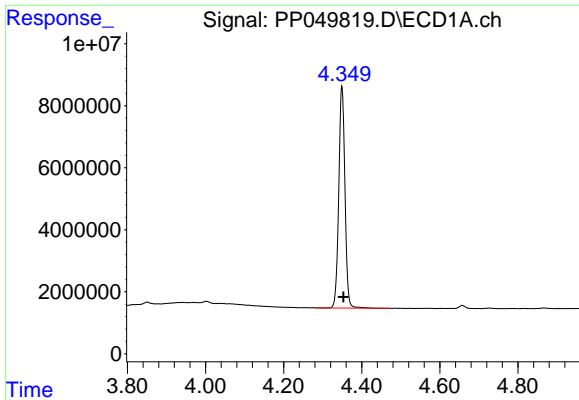
07/26/2022  
 Supervised By :Ankita  
 Jodhani

07/26/2022

Integration File signal 1: autoint1.e  
 Integration File signal 2: autoint2.e  
 Quant Time: Jul 26 07:28:20 2022  
 Quant Method : Z:\pestpcbsrv\HPCHEM1\ECD\_P\methods\PP071422.M  
 Quant Title : GC EXTRACTABLES  
 QLast Update : Thu Jul 14 06:08:44 2022  
 Response via : Initial Calibration  
 Integrator: ChemStation

Volume Inj. : 2 µl  
 Signal #1 Phase : ZB-MR1 Signal #2 Phase: ZB-MR2  
 Signal #1 Info : 30Mx0.32mmx 0.50µ Signal #2 Info : 30M x 0.32mm x 0.25µm



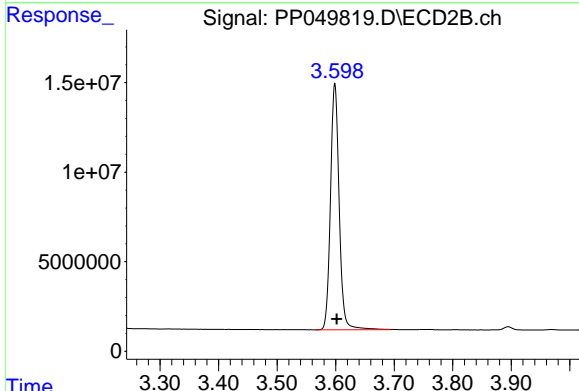


#1 Tetrachloro-m-xylene  
 R.T.: 4.349 min  
 Delta R.T.: -0.004 min  
 Response: 78321992  
 Conc: 53.97 ng/ml

Instrument :  
 ECD\_P  
 Client Sample Id :  
 AR1254CCC500

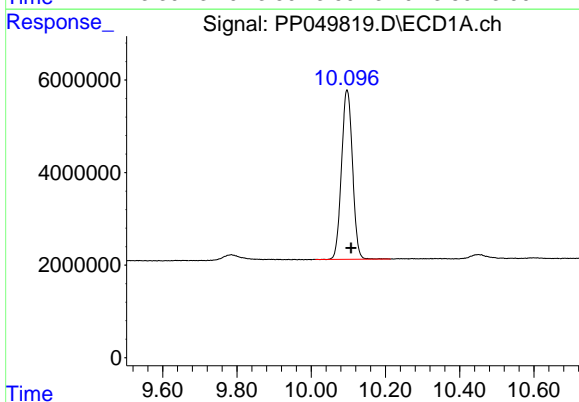
Manual Integrations  
**APPROVED**  
 Reviewed By :Yogesh  
 Patel

07/26/2022  
 Supervised By :Ankita  
 Jodhani

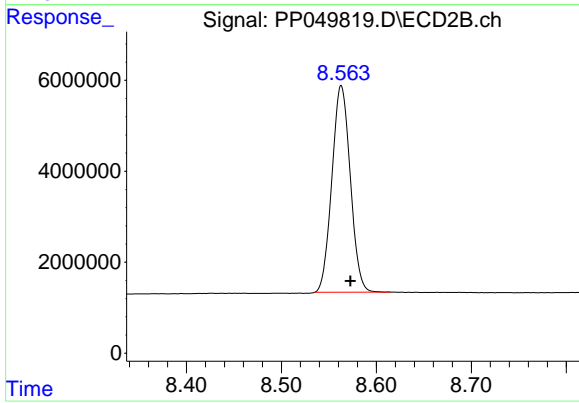


#1 Tetrachloro-m-xylene  
 R.T.: 3.599 min  
 Delta R.T.: -0.003 min  
 Response: 141923785  
 Conc: 58.06 ng/ml

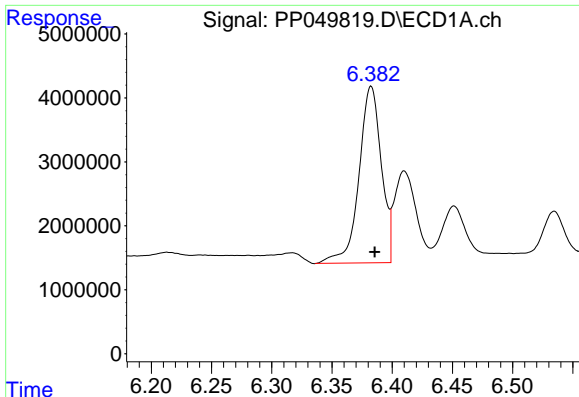
07/26/2022



#2 Decachlorobiphenyl  
 R.T.: 10.097 min  
 Delta R.T.: -0.010 min  
 Response: 75116576  
 Conc: 53.11 ng/ml



#2 Decachlorobiphenyl  
 R.T.: 8.563 min  
 Delta R.T.: -0.010 min  
 Response: 61210693  
 Conc: 52.56 ng/ml



#26 AR-1254-1

R.T.: 6.382 min  
 Delta R.T.: -0.003 min  
 Response: 35588446  
 Conc: 565.06 ng/ml

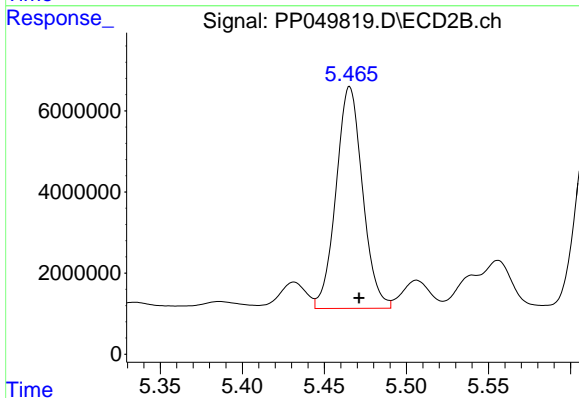
Instrument :  
 ECD\_P  
 ClientSampleId :  
 AR1254CCC500

Manual Integrations  
 APPROVED

Reviewed By :Yogesh  
 Patel

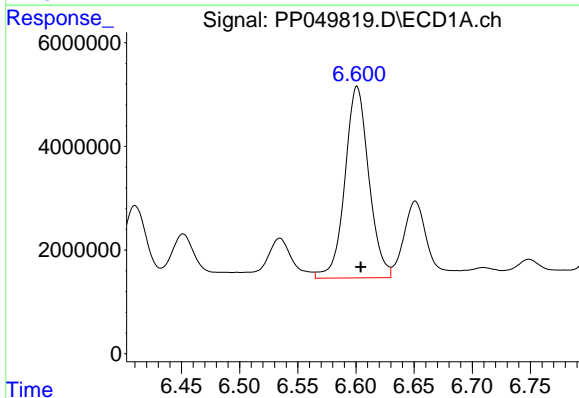
07/26/2022  
 Supervised By :Ankita  
 Jodhani

07/26/2022



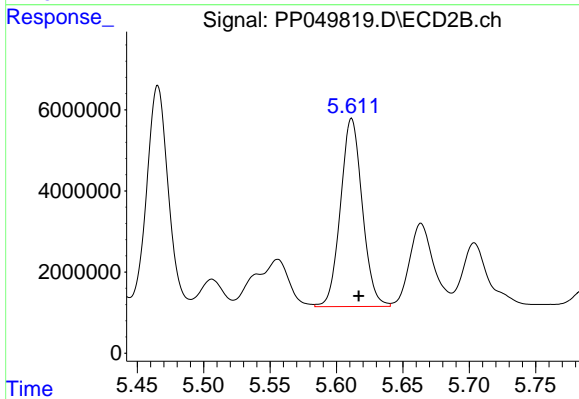
#26 AR-1254-1

R.T.: 5.465 min  
 Delta R.T.: -0.006 min  
 Response: 61578849  
 Conc: 485.52 ng/ml



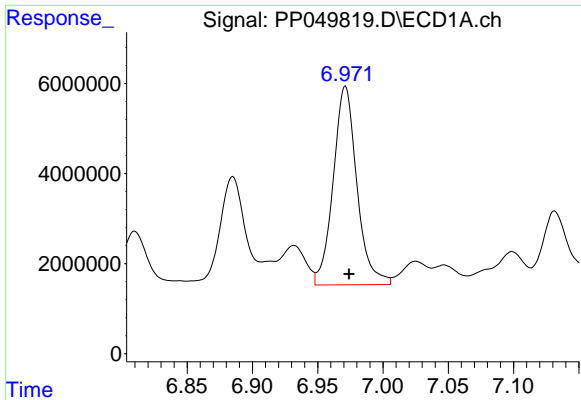
#27 AR-1254-2

R.T.: 6.601 min  
 Delta R.T.: -0.003 min  
 Response: 52985556  
 Conc: 543.87 ng/ml



#27 AR-1254-2

R.T.: 5.611 min  
 Delta R.T.: -0.005 min  
 Response: 53053797  
 Conc: 479.99 ng/ml



#28 AR-1254-3

R.T.: 6.971 min  
 Delta R.T.: -0.003 min  
 Response: 55804202  
 Conc: 540.09 ng/ml

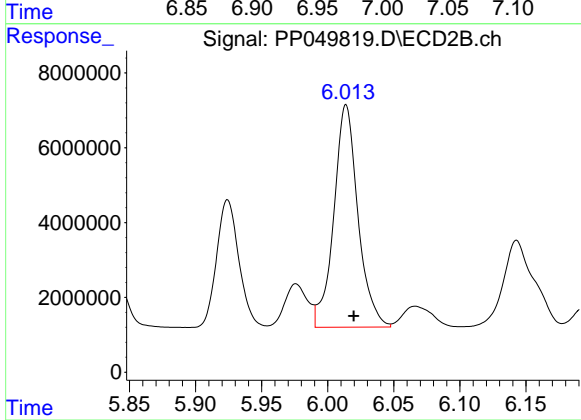
Instrument :  
 ECD\_P  
 ClientSampleId :  
 AR1254CCC500

Manual Integrations  
 APPROVED

Reviewed By :Yogesh  
 Patel

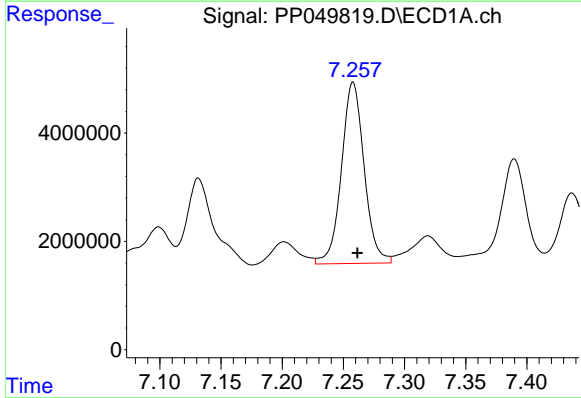
07/26/2022  
 Supervised By :Ankita  
 Jodhani

07/26/2022



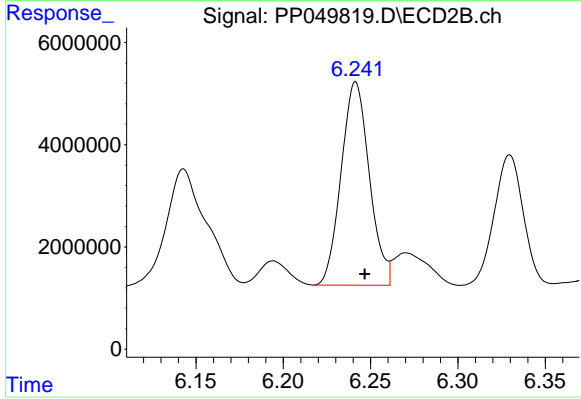
#28 AR-1254-3

R.T.: 6.014 min  
 Delta R.T.: -0.006 min  
 Response: 75725450  
 Conc: 465.22 ng/ml



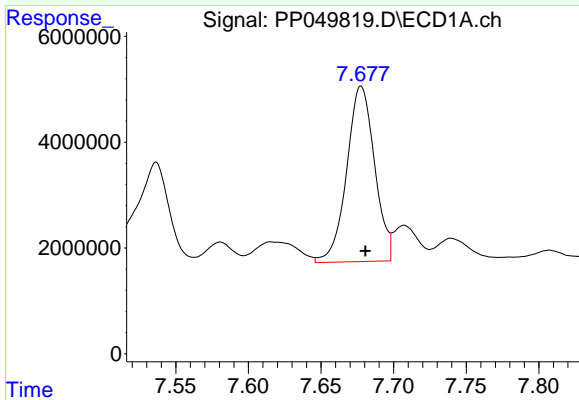
#29 AR-1254-4

R.T.: 7.258 min  
 Delta R.T.: -0.004 min  
 Response: 43300078  
 Conc: 540.89 ng/ml



#29 AR-1254-4

R.T.: 6.241 min  
 Delta R.T.: -0.005 min  
 Response: 44710100  
 Conc: 462.09 ng/ml



#30 AR-1254-5

R.T.: 7.677 min  
 Delta R.T.: -0.003 min  
 Response: 44563953  
 Conc: 501.38 ng/ml

Instrument :

ECD\_P

Client Sample Id :

AR1254CCC500

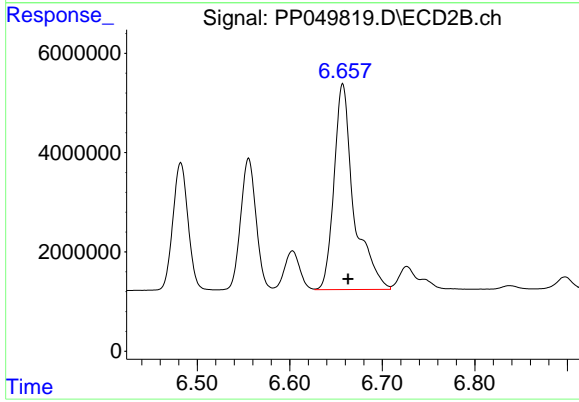
Manual Integrations  
 APPROVED

Reviewed By :Yogesh  
 Patel

07/26/2022

Supervised By :Ankita  
 Jodhani

07/26/2022



#30 AR-1254-5

R.T.: 6.657 min  
 Delta R.T.: -0.006 min  
 Response: 61787365  
 Conc: 466.26 ng/ml