

Data Path : Z:\pestpcbsrv\HPCHEM1\ECD_P\Data\PP072525\
 Data File : PP074039.D
 Signal(s) : Signal #1: ECD1A.ch Signal #2: ECD2B.ch
 Acq On : 25 Jul 2025 15:12
 Operator : YP\AJ
 Sample : AR1660ICC1000
 Misc :
 ALS Vial : 3 Sample Multiplier: 1

Instrument :
 ECD_P
 ClientSampleId :
 AR1660ICC1000

Integration File signal 1: autoint1.e
 Integration File signal 2: autoint2.e
 Quant Time: Jul 25 16:00:08 2025
 Quant Method : Z:\pestpcbsrv\HPCHEM1\ECD_P\methods\PP072525.M
 Quant Title : GC EXTRACTABLES
 QLast Update : Fri Jul 25 15:56:58 2025
 Response via : Initial Calibration
 Integrator: ChemStation

Volume Inj. : 2 µl
 Signal #1 Phase : ZB-MR1 Signal #2 Phase: ZB-MR2
 Signal #1 Info : 30Mx0.32mmx 0.50µ Signal #2 Info : 30M x 0.32mm x 0.25µm

Compound	RT#1	RT#2	Resp#1	Resp#2	ng/ml	ng/ml

System Monitoring Compounds						
1) SA Tetrachlo...	4.700	3.892	96745696	1019.1E6	95.392	100.818
2) SA Decachlor...	10.576	9.016	65447502	1167.0E6	95.937	98.010
Target Compounds						
3) L1 AR-1016-1	5.859	5.014	32543911	861.6E6	932.403	983.637
4) L1 AR-1016-2	5.880	5.071	49804999	387.3E6	949.736	1000.012
5) L1 AR-1016-3	5.944	5.194	30766552	222.4E6	934.650	984.253
6) L1 AR-1016-4	6.041	5.235	25246301	212.3E6	935.898	993.744
7) L1 AR-1016-5	6.337	5.453	24638701	233.8E6	947.041	982.100
31) L7 AR-1260-1	7.461	6.685	40543675	812.6E6	953.953	989.177
32) L7 AR-1260-2	7.715	6.842	47890402	661.3E6	945.825	963.383
33) L7 AR-1260-3	8.076	7.054	35606368	843.3E6	945.159	991.893
34) L7 AR-1260-4	8.308	7.317	41934873	609.4E6	944.020	994.203
35) L7 AR-1260-5	8.641	7.558	80268957	1694.3E6	958.668	997.101

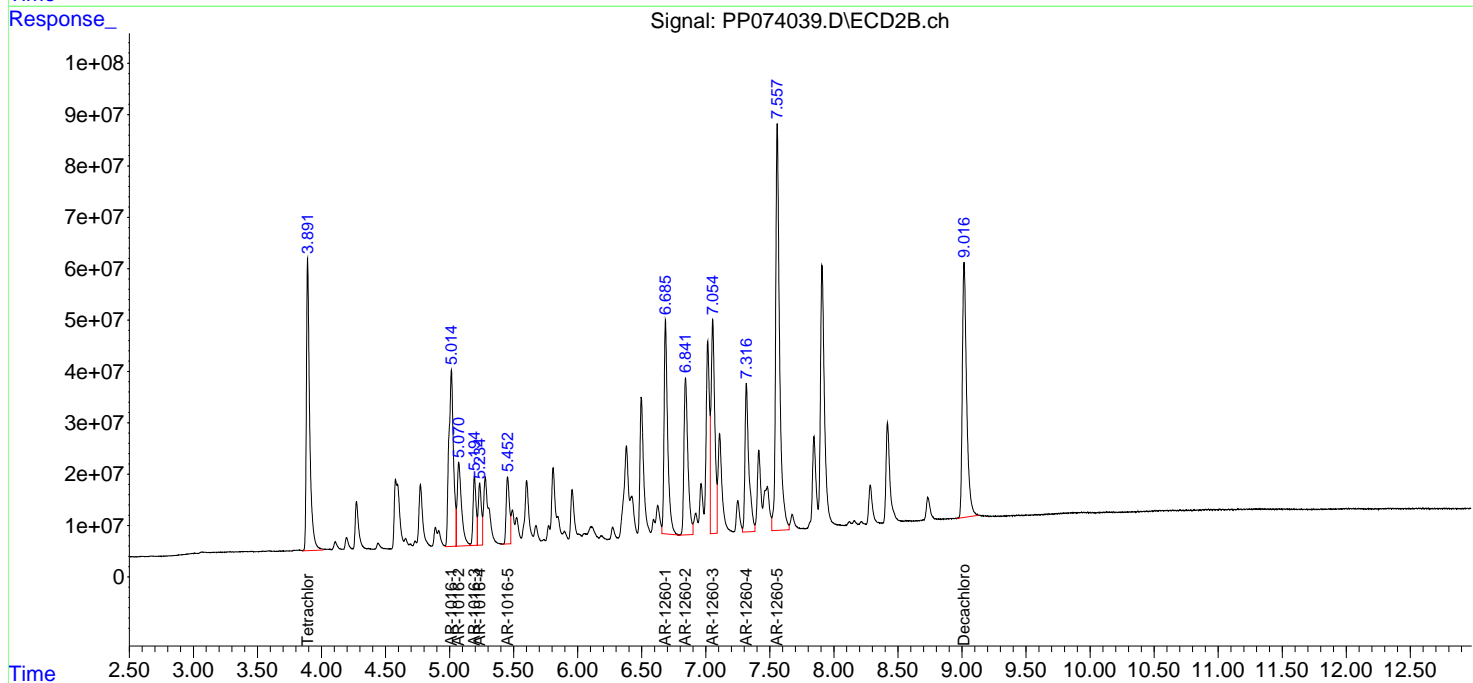
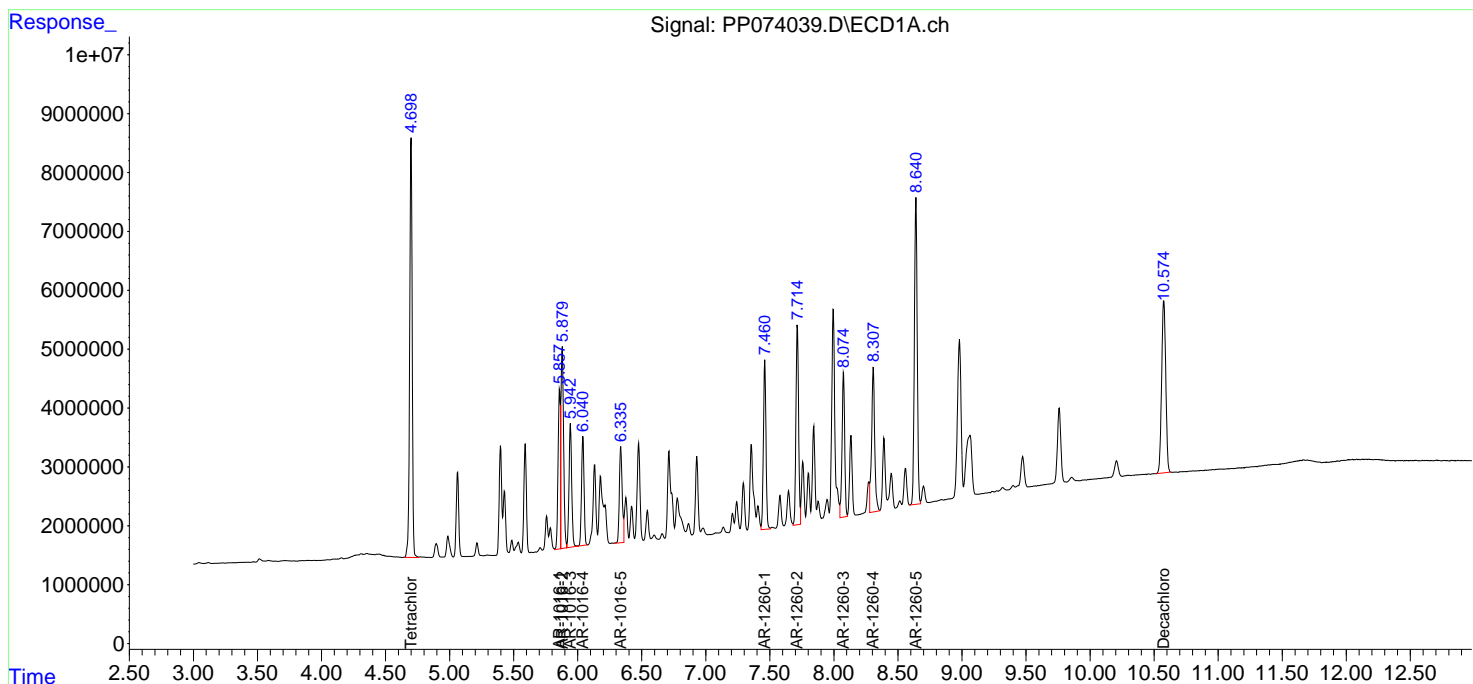
(f)=RT Delta > 1/2 Window (#)=Amounts differ by > 25% (m)=manual int.

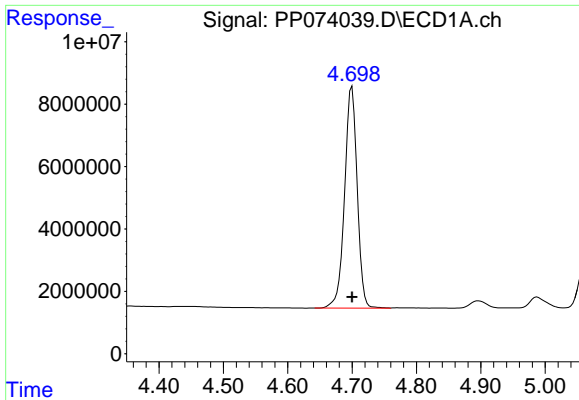
Data Path : Z:\pestpcbsrv\HPCHEM1\ECD_P\Data\PP072525\
 Data File : PP074039.D
 Signal(s) : Signal #1: ECD1A.ch Signal #2: ECD2B.ch
 Acq On : 25 Jul 2025 15:12
 Operator : YP\AJ
 Sample : AR1660ICC1000
 Misc :
 ALS Vial : 3 Sample Multiplier: 1

Instrument :
 ECD_P
 ClientSampleId :
 AR1660ICC1000

Integration File signal 1: autoint1.e
 Integration File signal 2: autoint2.e
 Quant Time: Jul 25 16:00:08 2025
 Quant Method : Z:\pestpcbsrv\HPCHEM1\ECD_P\methods\PP072525.M
 Quant Title : GC EXTRACTABLES
 QLast Update : Fri Jul 25 15:56:58 2025
 Response via : Initial Calibration
 Integrator: ChemStation

Volume Inj. : 2 µl
 Signal #1 Phase : ZB-MR1 Signal #2 Phase: ZB-MR2
 Signal #1 Info : 30Mx0.32mmx 0.50µ Signal #2 Info : 30M x 0.32mm x 0.25µm

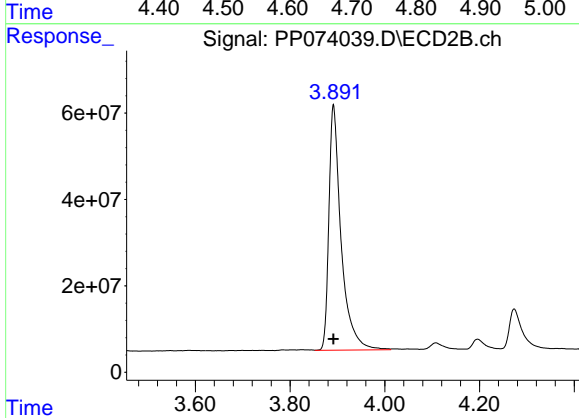




#1 Tetrachloro-m-xylene

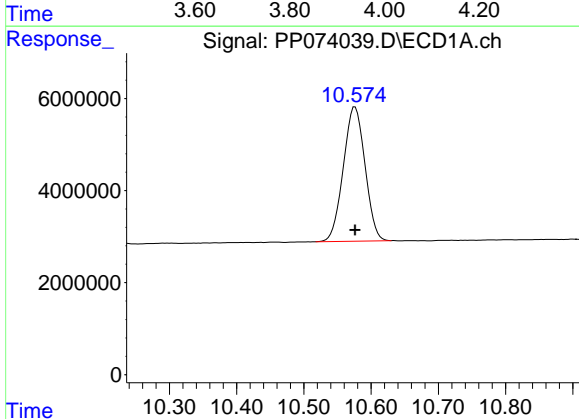
R.T.: 4.700 min
 Delta R.T.: 0.000 min
 Response: 96745696
 Conc: 95.39 ng/ml

Instrument :
 ECD_P
 ClientSampleId :
 AR1660ICC1000



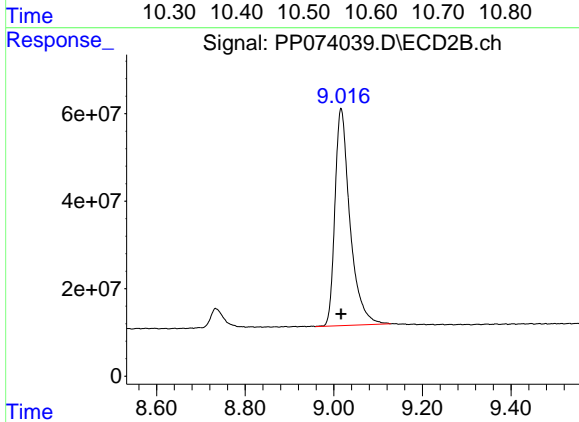
#1 Tetrachloro-m-xylene

R.T.: 3.892 min
 Delta R.T.: 0.000 min
 Response: 1019114316
 Conc: 100.82 ng/ml



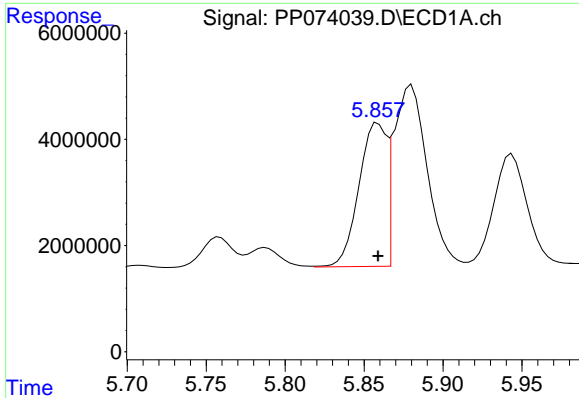
#2 Decachlorobiphenyl

R.T.: 10.576 min
 Delta R.T.: 0.000 min
 Response: 65447502
 Conc: 95.94 ng/ml



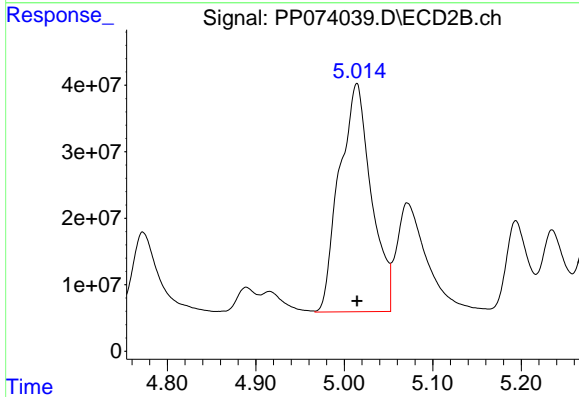
#2 Decachlorobiphenyl

R.T.: 9.016 min
 Delta R.T.: 0.000 min
 Response: 1166984006
 Conc: 98.01 ng/ml

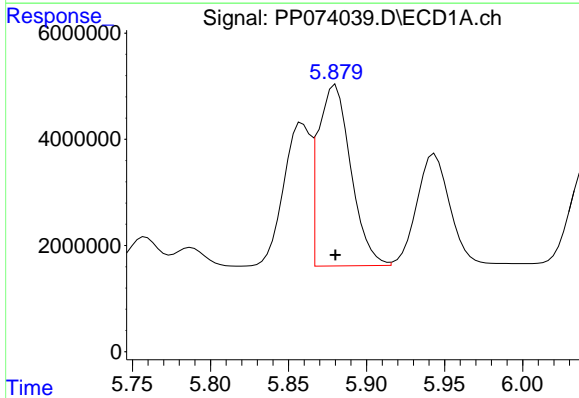


#3 AR-1016-1
 R.T.: 5.859 min
 Delta R.T.: 0.000 min
 Response: 32543911
 Conc: 932.40 ng/ml

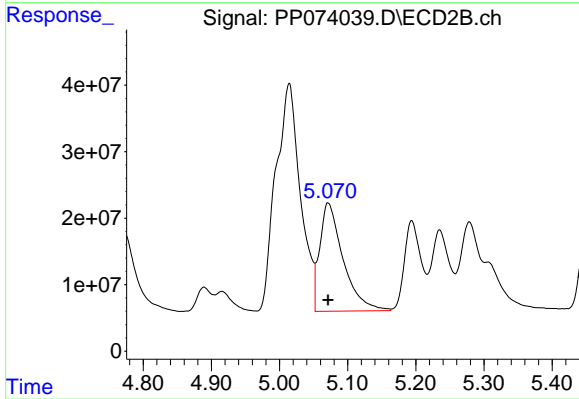
Instrument :
 ECD_P
 ClientSampleId :
 AR1660ICC1000



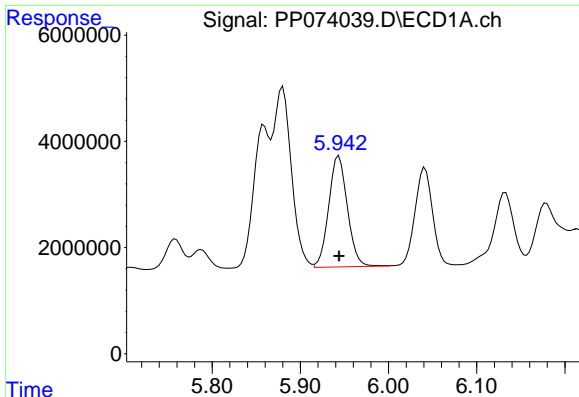
#3 AR-1016-1
 R.T.: 5.014 min
 Delta R.T.: 0.000 min
 Response: 861604049
 Conc: 983.64 ng/ml



#4 AR-1016-2
 R.T.: 5.880 min
 Delta R.T.: 0.000 min
 Response: 49804999
 Conc: 949.74 ng/ml



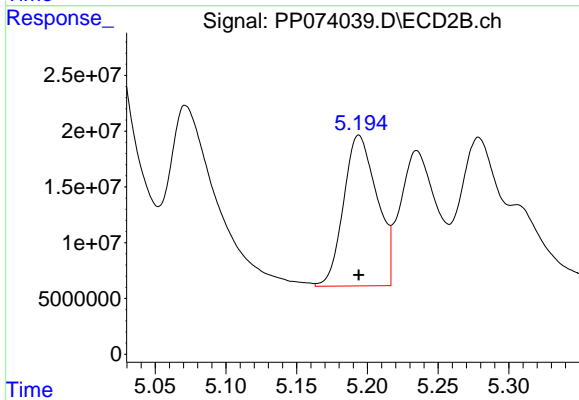
#4 AR-1016-2
 R.T.: 5.071 min
 Delta R.T.: 0.000 min
 Response: 387263409
 Conc: 1000.01 ng/ml



#5 AR-1016-3

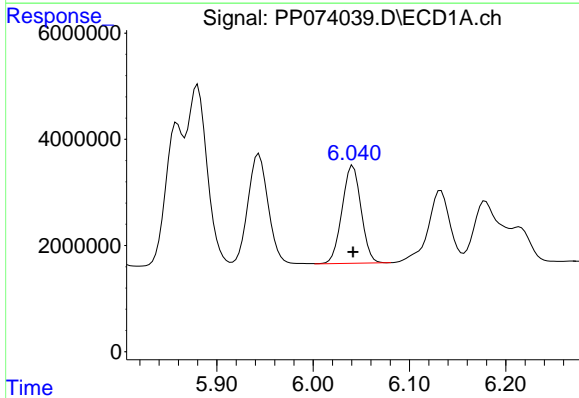
R.T.: 5.944 min
 Delta R.T.: 0.000 min
 Response: 30766552
 Conc: 934.65 ng/ml

Instrument :
 ECD_P
 ClientSampleId :
 AR1660ICC1000



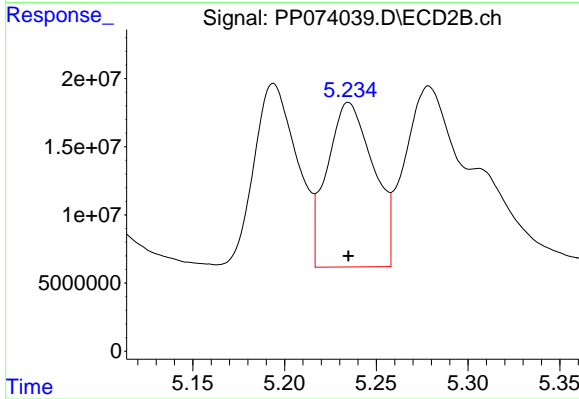
#5 AR-1016-3

R.T.: 5.194 min
 Delta R.T.: 0.000 min
 Response: 222416136
 Conc: 984.25 ng/ml



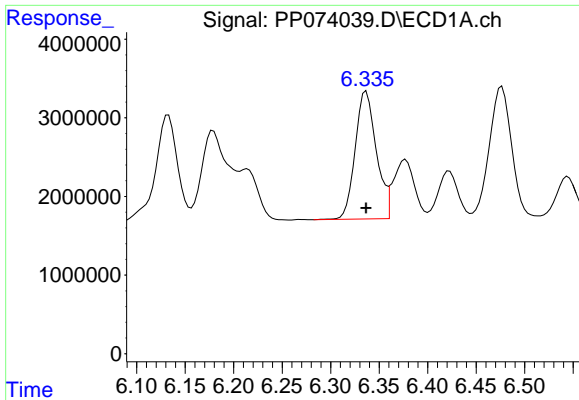
#6 AR-1016-4

R.T.: 6.041 min
 Delta R.T.: 0.000 min
 Response: 25246301
 Conc: 935.90 ng/ml



#6 AR-1016-4

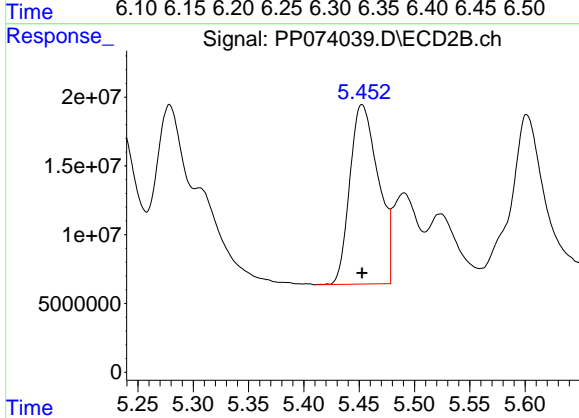
R.T.: 5.235 min
 Delta R.T.: 0.000 min
 Response: 212272124
 Conc: 993.74 ng/ml



#7 AR-1016-5

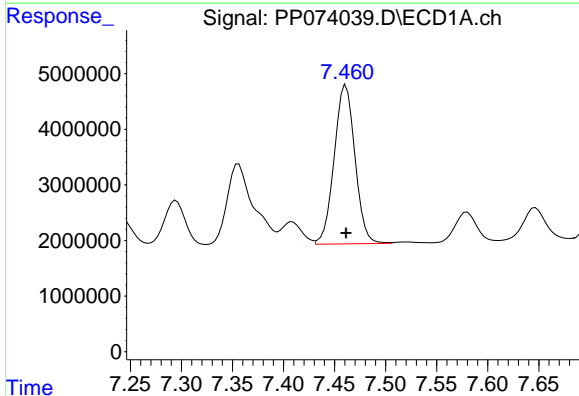
R.T.: 6.337 min
 Delta R.T.: 0.000 min
 Response: 24638701
 Conc: 947.04 ng/ml

Instrument :
 ECD_P
 ClientSampleId :
 AR1660ICC1000



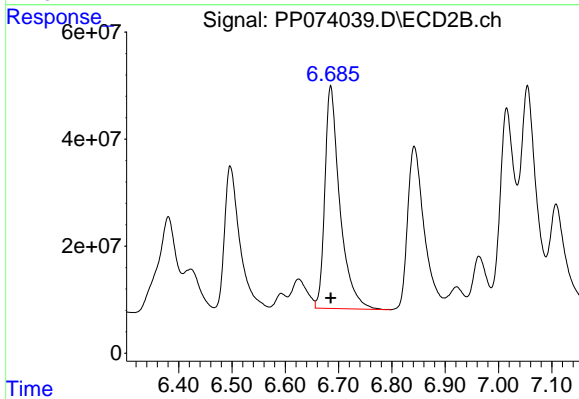
#7 AR-1016-5

R.T.: 5.453 min
 Delta R.T.: 0.000 min
 Response: 233824266
 Conc: 982.10 ng/ml



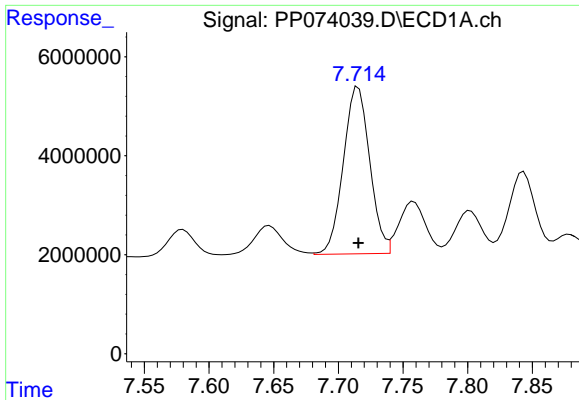
#31 AR-1260-1

R.T.: 7.461 min
 Delta R.T.: 0.000 min
 Response: 40543675
 Conc: 953.95 ng/ml



#31 AR-1260-1

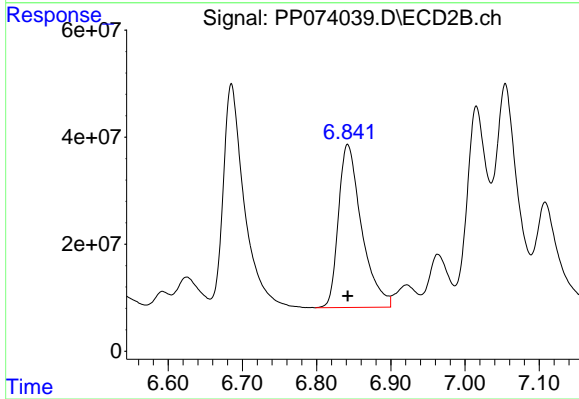
R.T.: 6.685 min
 Delta R.T.: 0.000 min
 Response: 812613045
 Conc: 989.18 ng/ml



#32 AR-1260-2

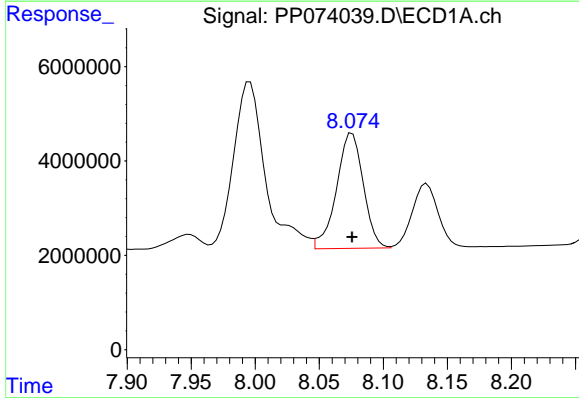
R.T.: 7.715 min
 Delta R.T.: 0.000 min
 Response: 47890402
 Conc: 945.83 ng/ml

Instrument :
 ECD_P
 ClientSampleId :
 AR1660ICC1000



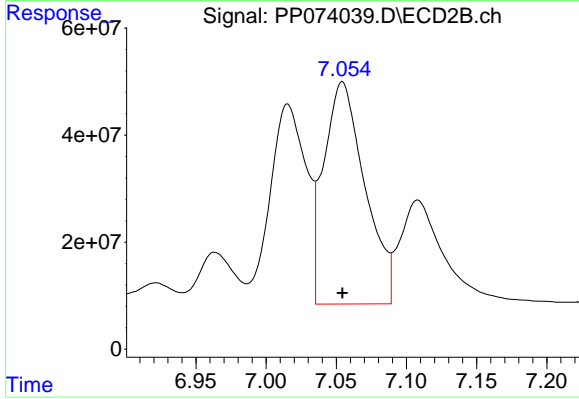
#32 AR-1260-2

R.T.: 6.842 min
 Delta R.T.: 0.000 min
 Response: 661292745
 Conc: 963.38 ng/ml



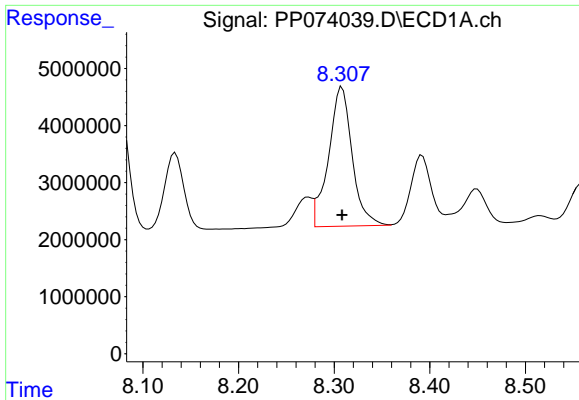
#33 AR-1260-3

R.T.: 8.076 min
 Delta R.T.: 0.000 min
 Response: 35606368
 Conc: 945.16 ng/ml



#33 AR-1260-3

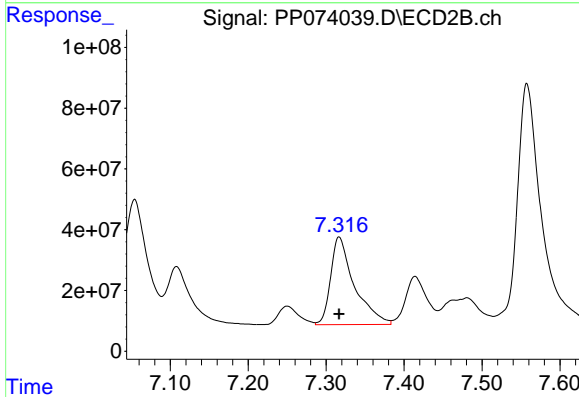
R.T.: 7.054 min
 Delta R.T.: 0.000 min
 Response: 843274282
 Conc: 991.89 ng/ml



#34 AR-1260-4

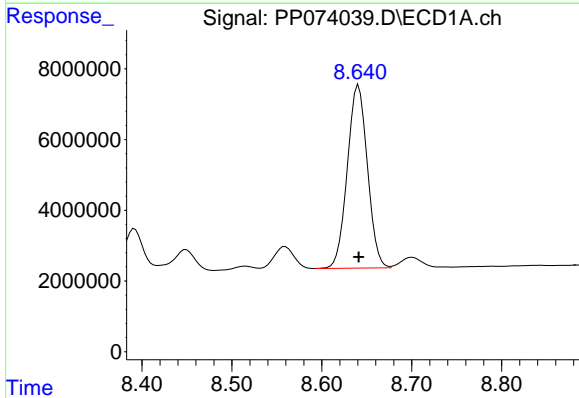
R.T.: 8.308 min
 Delta R.T.: 0.000 min
 Response: 41934873
 Conc: 944.02 ng/ml

Instrument :
 ECD_P
 ClientSampleId :
 AR1660ICC1000



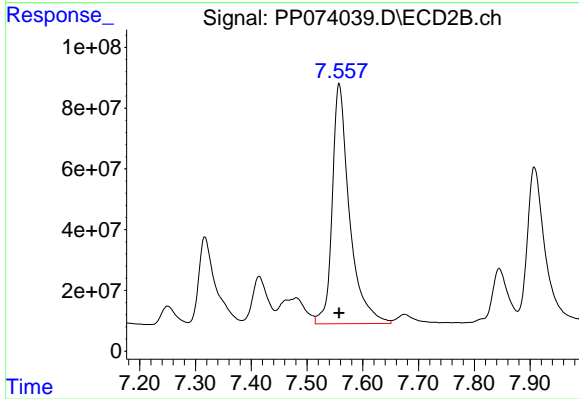
#34 AR-1260-4

R.T.: 7.317 min
 Delta R.T.: 0.000 min
 Response: 609392081
 Conc: 994.20 ng/ml



#35 AR-1260-5

R.T.: 8.641 min
 Delta R.T.: 0.000 min
 Response: 80268957
 Conc: 958.67 ng/ml



#35 AR-1260-5

R.T.: 7.558 min
 Delta R.T.: 0.000 min
 Response: 1694298629
 Conc: 997.10 ng/ml