

Data Path : Z:\pestpcbsrv\HPCHEM1\ECD_P\Data\PP072525\
 Data File : PP074053.D
 Signal(s) : Signal #1: ECD1A.ch Signal #2: ECD2B.ch
 Acq On : 25 Jul 2025 19:00
 Operator : YP\AJ
 Sample : AR1248ICC500
 Misc :
 ALS Vial : 17 Sample Multiplier: 1

Instrument :
 ECD_P
ClientSampleId :
 AR1248ICC500

Integration File signal 1: autoint1.e
 Integration File signal 2: autoint2.e
 Quant Time: Jul 26 02:33:42 2025
 Quant Method : Z:\pestpcbsrv\HPCHEM1\ECD_P\methods\PP072525.M
 Quant Title : GC EXTRACTABLES
 QLast Update : Sat Jul 26 02:30:37 2025
 Response via : Initial Calibration
 Integrator: ChemStation

Volume Inj. : 2 µl
 Signal #1 Phase : ZB-MR1 Signal #2 Phase: ZB-MR2
 Signal #1 Info : 30Mx0.32mmx 0.50µ Signal #2 Info : 30M x 0.32mm x 0.25µm

Compound	RT#1	RT#2	Resp#1	Resp#2	ng/ml	ng/ml

System Monitoring Compounds						
1) SA Tetrachlo...	4.698	3.892	53638463	502.3E6	50.000	50.000
2) SA Decachlor...	10.570	9.016	37038855	615.1E6	50.000	50.000
Target Compounds						
21) L5 AR-1248-1	5.858	5.013	13080281	244.3E6	500.000	500.000
22) L5 AR-1248-2	6.132	5.235	17849627	152.5E6	500.000	500.000
23) L5 AR-1248-3	6.336	5.279	20003518	254.3E6	500.000	707.655 #
24) L5 AR-1248-4	6.737	5.453	22881706	178.3E6	500.000	500.000
25) L5 AR-1248-5	6.777	5.848	31421030	295.0E6	500.000	500.000

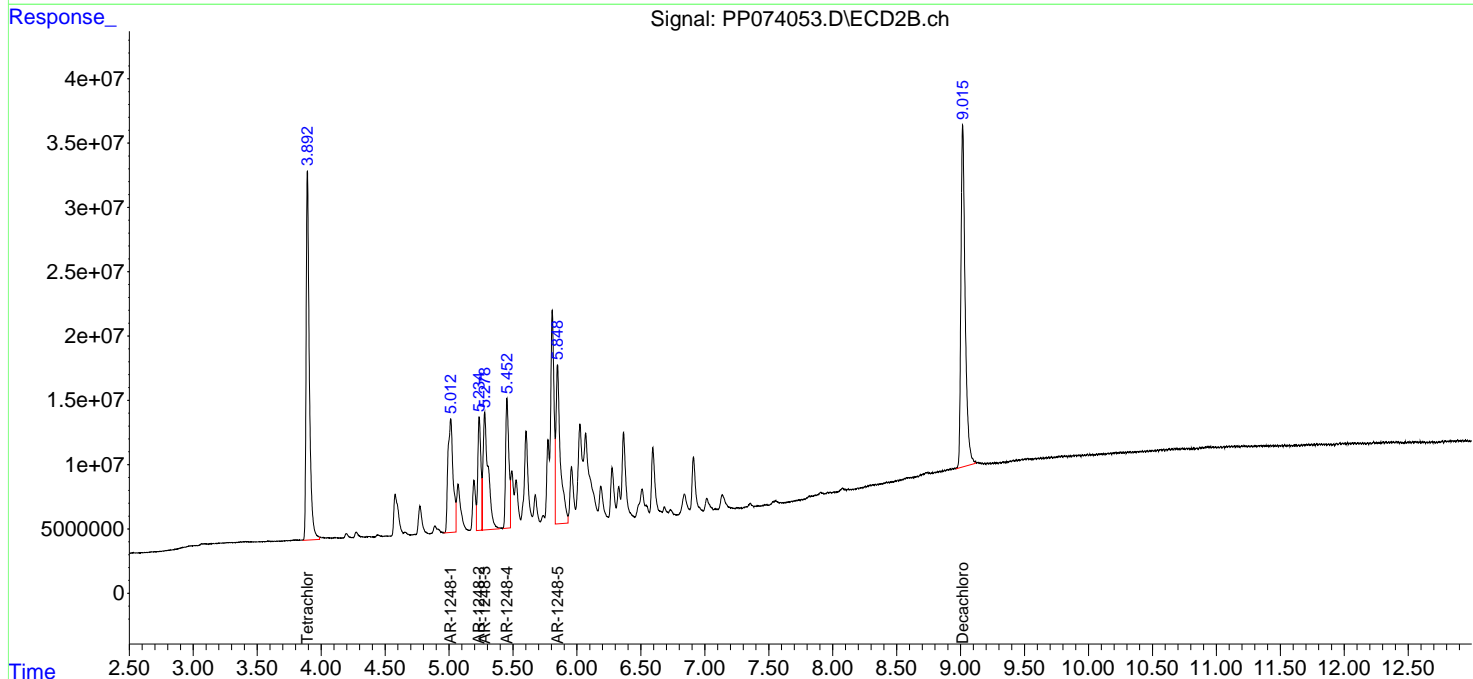
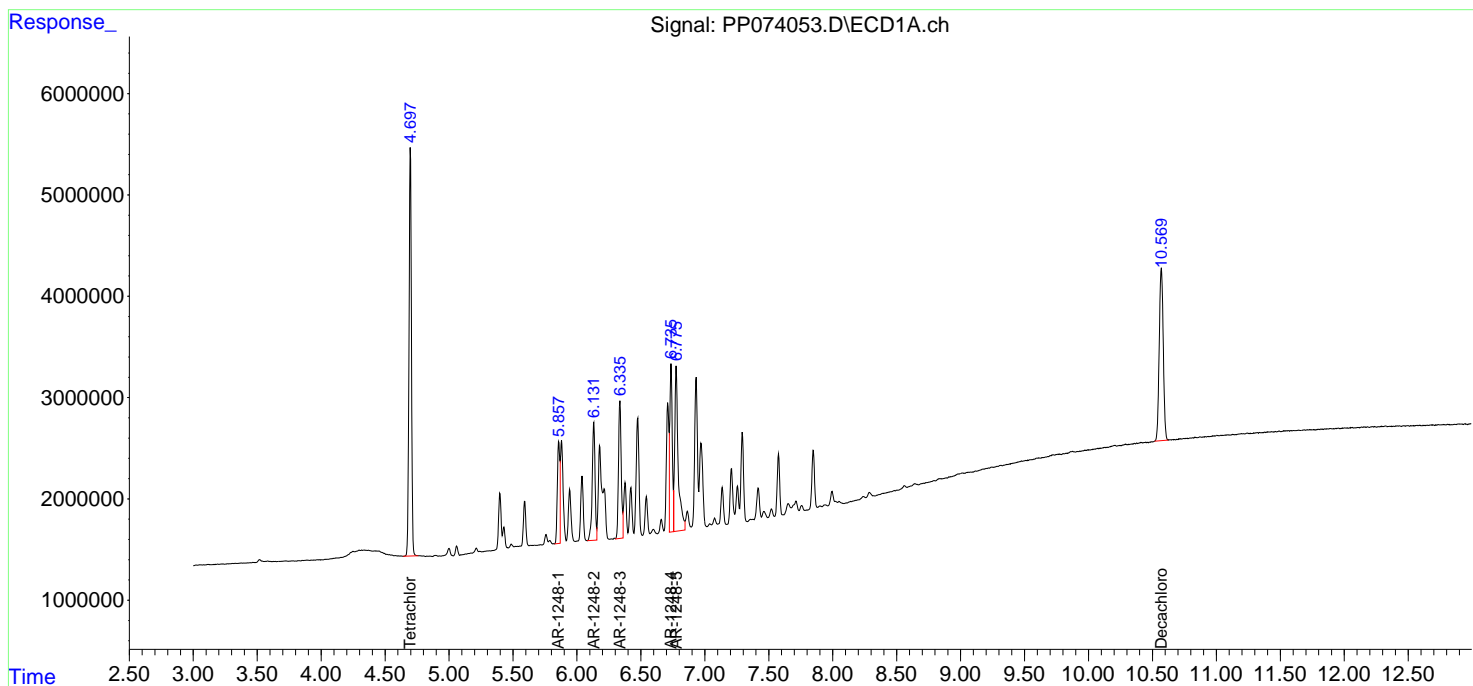
(f)=RT Delta > 1/2 Window (#)=Amounts differ by > 25% (m)=manual int.

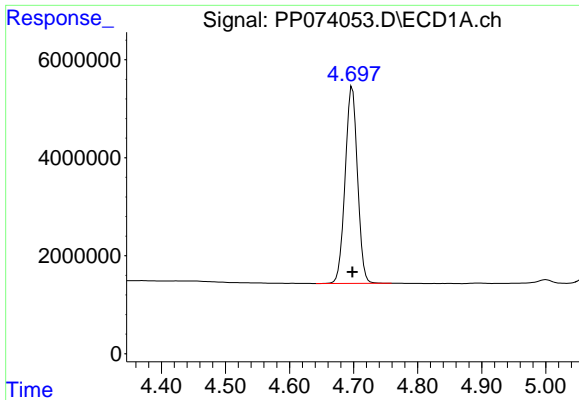
Data Path : Z:\pestpcbsrv\HPCHEM1\ECD_P\Data\PP072525\
 Data File : PP074053.D
 Signal(s) : Signal #1: ECD1A.ch Signal #2: ECD2B.ch
 Acq On : 25 Jul 2025 19:00
 Operator : YP\AJ
 Sample : AR1248ICC500
 Misc :
 ALS Vial : 17 Sample Multiplier: 1

Instrument :
 ECD_P
 ClientSampleId :
 AR1248ICC500

Integration File signal 1: autoint1.e
 Integration File signal 2: autoint2.e
 Quant Time: Jul 26 02:33:42 2025
 Quant Method : Z:\pestpcbsrv\HPCHEM1\ECD_P\methods\PP072525.M
 Quant Title : GC EXTRACTABLES
 QLast Update : Sat Jul 26 02:30:37 2025
 Response via : Initial Calibration
 Integrator: ChemStation

Volume Inj. : 2 µl
 Signal #1 Phase : ZB-MR1 Signal #2 Phase: ZB-MR2
 Signal #1 Info : 30Mx0.32mmx 0.50µ Signal #2 Info : 30M x 0.32mm x 0.25µm

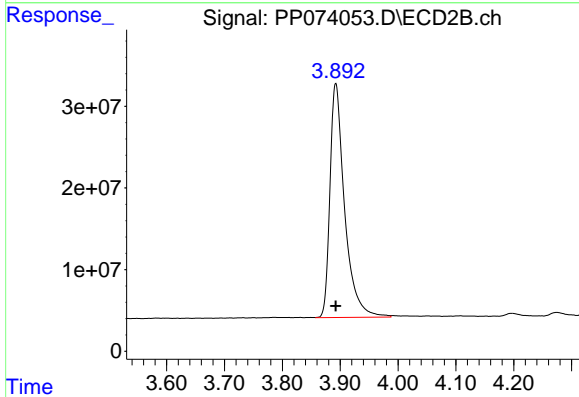




#1 Tetrachloro-m-xylene

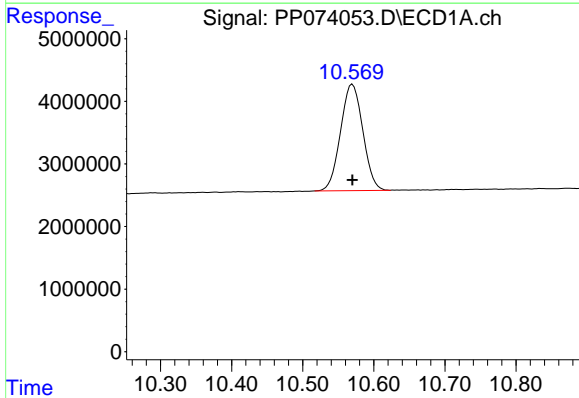
R.T.: 4.698 min
 Delta R.T.: 0.000 min
 Response: 53638463
 Conc: 50.00 ng/ml

Instrument :
 ECD_P
 ClientSampleId :
 AR1248ICC500



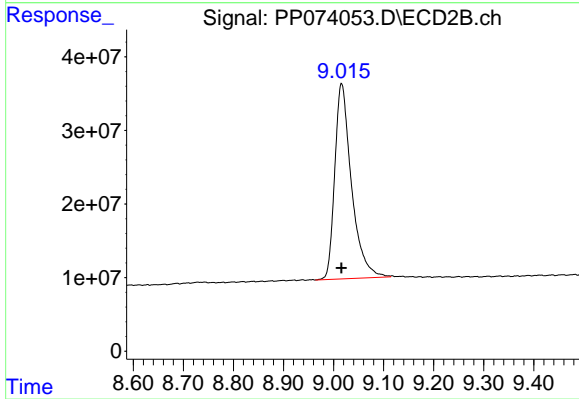
#1 Tetrachloro-m-xylene

R.T.: 3.892 min
 Delta R.T.: 0.000 min
 Response: 502279705
 Conc: 50.00 ng/ml



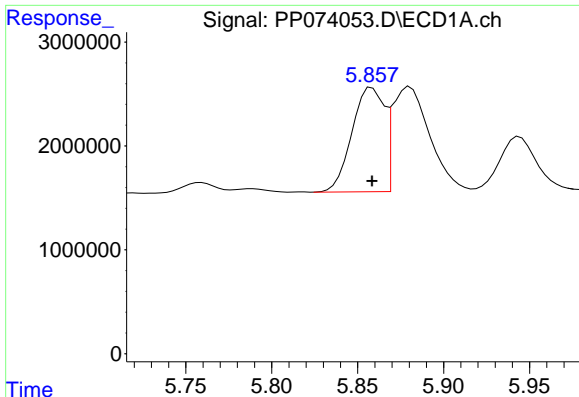
#2 Decachlorobiphenyl

R.T.: 10.570 min
 Delta R.T.: 0.000 min
 Response: 37038855
 Conc: 50.00 ng/ml



#2 Decachlorobiphenyl

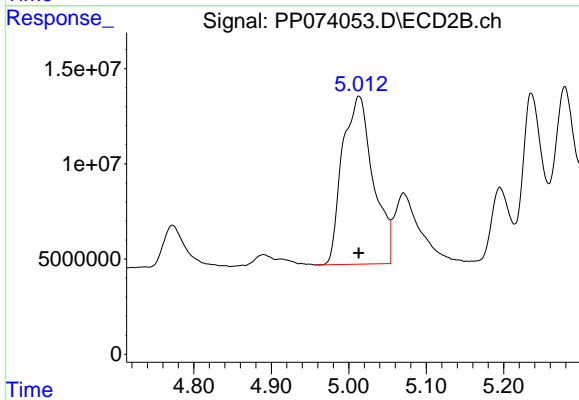
R.T.: 9.016 min
 Delta R.T.: 0.000 min
 Response: 615120781
 Conc: 50.00 ng/ml



#21 AR-1248-1

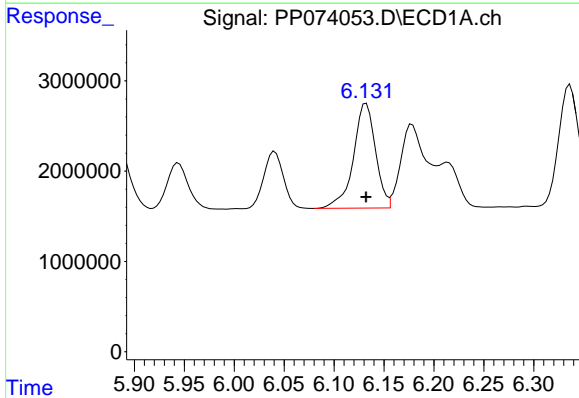
R.T.: 5.858 min
 Delta R.T.: 0.000 min
 Response: 13080281
 Conc: 500.00 ng/ml

Instrument :
 ECD_P
 ClientSampleId :
 AR1248ICC500



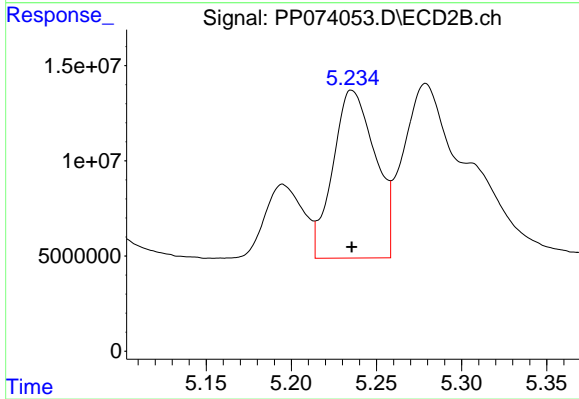
#21 AR-1248-1

R.T.: 5.013 min
 Delta R.T.: 0.000 min
 Response: 244268851
 Conc: 500.00 ng/ml



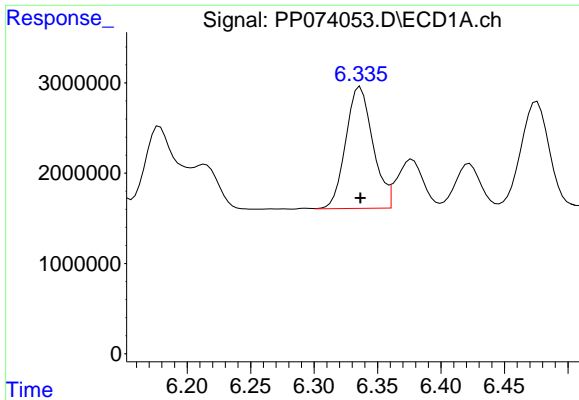
#22 AR-1248-2

R.T.: 6.132 min
 Delta R.T.: 0.000 min
 Response: 17849627
 Conc: 500.00 ng/ml



#22 AR-1248-2

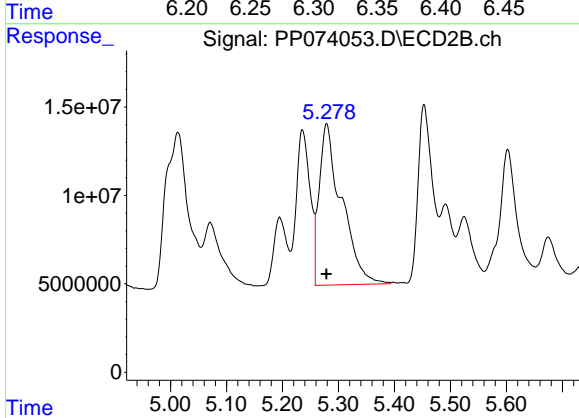
R.T.: 5.235 min
 Delta R.T.: 0.000 min
 Response: 152521413
 Conc: 500.00 ng/ml



#23 AR-1248-3

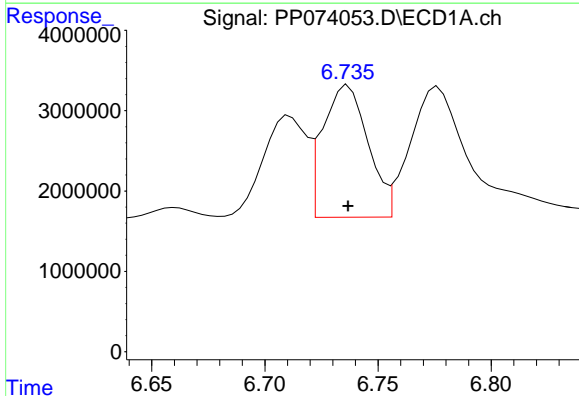
R.T.: 6.336 min
 Delta R.T.: 0.000 min
 Response: 20003518
 Conc: 500.00 ng/ml

Instrument :
 ECD_P
 ClientSampleId :
 AR1248ICC500



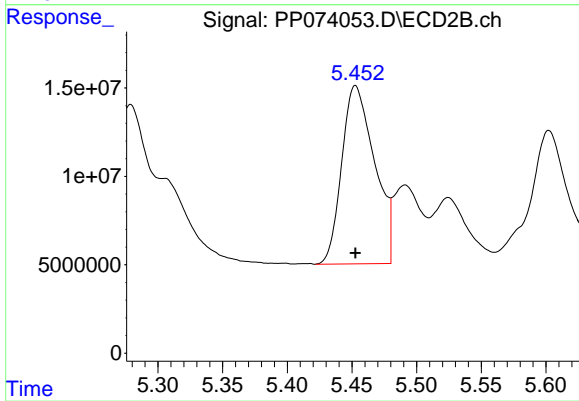
#23 AR-1248-3

R.T.: 5.279 min
 Delta R.T.: 0.000 min
 Response: 254331466
 Conc: 707.65 ng/ml



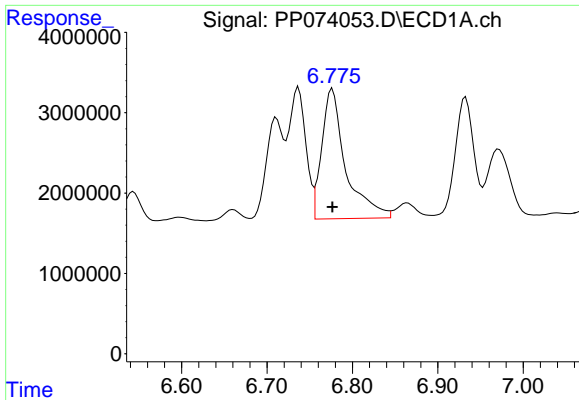
#24 AR-1248-4

R.T.: 6.737 min
 Delta R.T.: 0.000 min
 Response: 22881706
 Conc: 500.00 ng/ml



#24 AR-1248-4

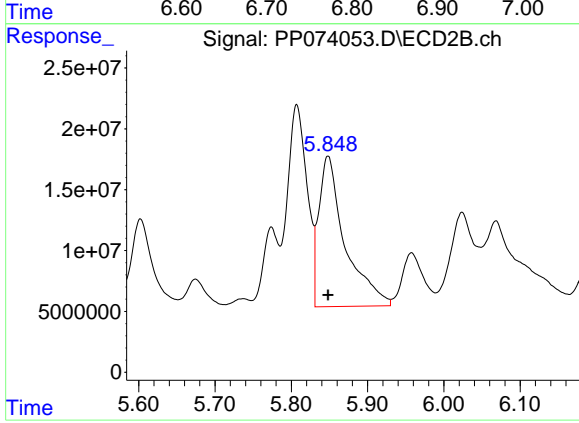
R.T.: 5.453 min
 Delta R.T.: 0.000 min
 Response: 178335347
 Conc: 500.00 ng/ml



#25 AR-1248-5

R.T.: 6.777 min
 Delta R.T.: 0.000 min
 Response: 31421030
 Conc: 500.00 ng/ml

Instrument :
 ECD_P
 ClientSampleId :
 AR1248ICC500



#25 AR-1248-5

R.T.: 5.848 min
 Delta R.T.: 0.000 min
 Response: 294974949
 Conc: 500.00 ng/ml