

Data Path : Z:\pestpcbsrv\HPCHEM1\ECD\_P\Data\PP072525\  
 Data File : PP074054.D  
 Signal(s) : Signal #1: ECD1A.ch Signal #2: ECD2B.ch  
 Acq On : 25 Jul 2025 19:16  
 Operator : YP\AJ  
 Sample : AR1248ICC250  
 Misc :  
 ALS Vial : 18 Sample Multiplier: 1

**Instrument :**  
 ECD\_P  
**ClientSampleId :**  
 AR1248ICC250

Integration File signal 1: autoint1.e  
 Integration File signal 2: autoint2.e  
 Quant Time: Jul 26 02:41:31 2025  
 Quant Method : Z:\pestpcbsrv\HPCHEM1\ECD\_P\methods\PP072525.M  
 Quant Title : GC EXTRACTABLES  
 QLast Update : Sat Jul 26 02:30:37 2025  
 Response via : Initial Calibration  
 Integrator: ChemStation

Volume Inj. : 2 µl  
 Signal #1 Phase : ZB-MR1 Signal #2 Phase: ZB-MR2  
 Signal #1 Info : 30Mx0.32mmx 0.50µ Signal #2 Info : 30M x 0.32mm x 0.25µm

Compound	RT#1	RT#2	Resp#1	Resp#2	ng/ml	ng/ml
-----						
System Monitoring Compounds						
1) SA Tetrachlo...	4.694	3.892	28826041	240.0E6	26.871	23.895
2) SA Decachlor...	10.563	9.015	19304831	314.6E6	26.060	25.569
Target Compounds						
21) L5 AR-1248-1	5.855	5.013	6990004	121.1E6	267.196	247.928
22) L5 AR-1248-2	6.128	5.235	9574322	77433725	268.194	253.845
23) L5 AR-1248-3	6.332	5.278	10895488	131.5E6	272.339	353.320 #
24) L5 AR-1248-4	6.732	5.452	12655105	89560806	276.533	251.102
25) L5 AR-1248-5	6.772	5.848	21094873	146.1E6	335.681	247.600 #
-----						

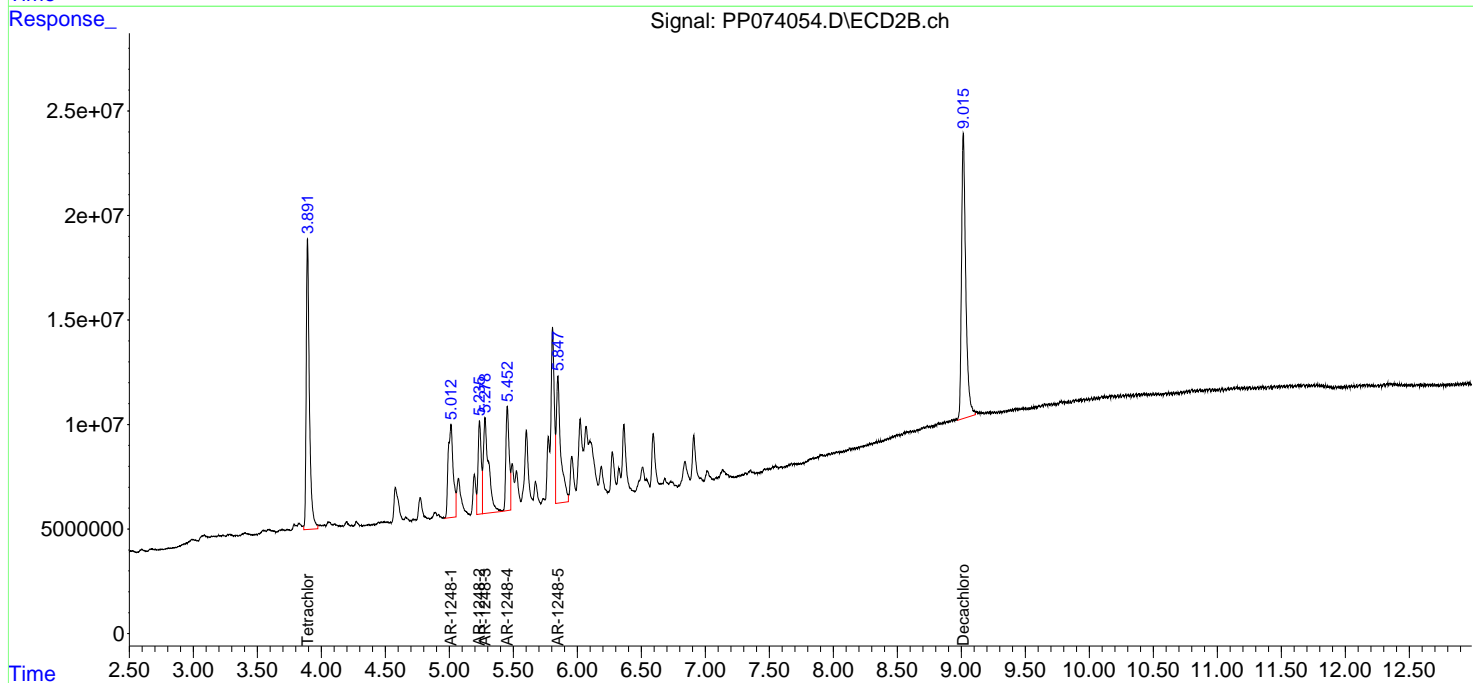
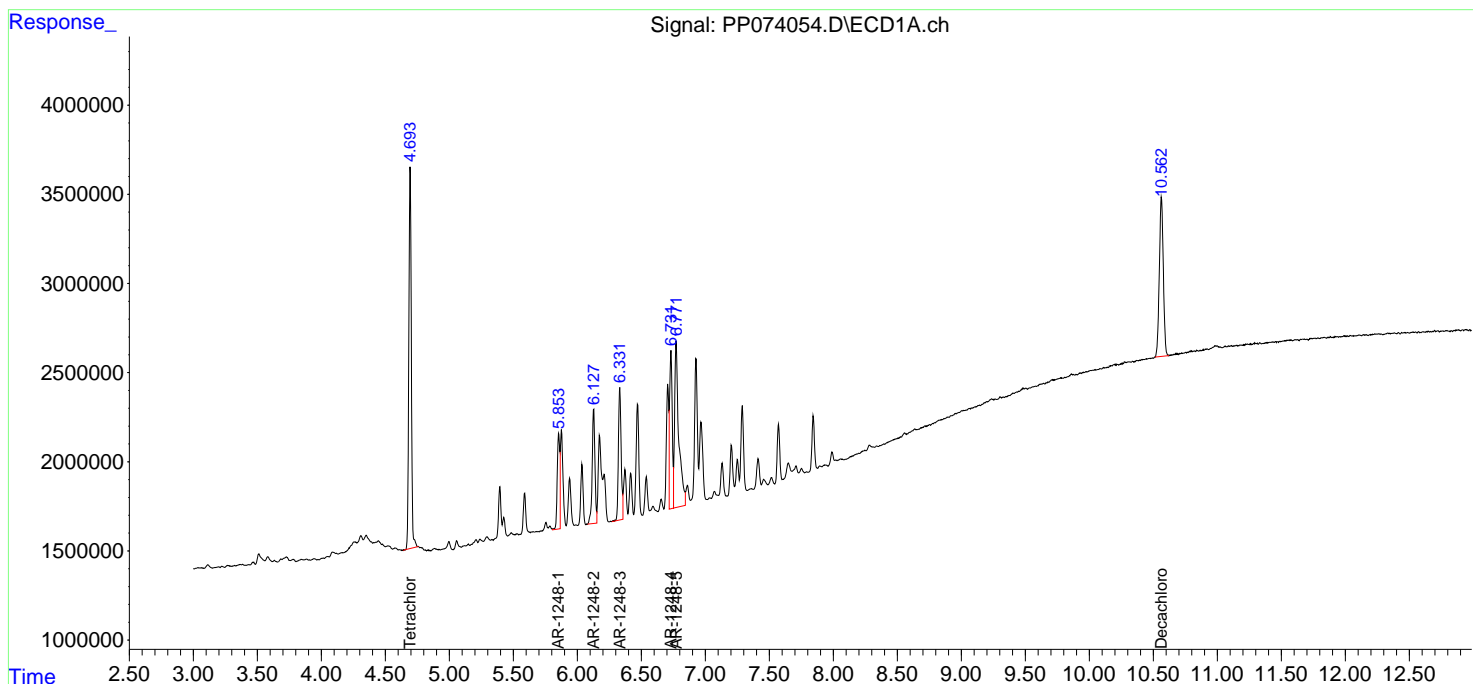
(f)=RT Delta > 1/2 Window (#)=Amounts differ by > 25% (m)=manual int.

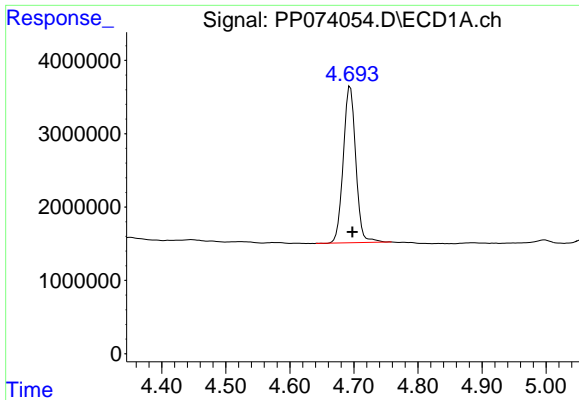
Data Path : Z:\pestpcbsrv\HPCHEM1\ECD\_P\Data\PP072525\  
 Data File : PP074054.D  
 Signal(s) : Signal #1: ECD1A.ch Signal #2: ECD2B.ch  
 Acq On : 25 Jul 2025 19:16  
 Operator : YP\AJ  
 Sample : AR1248ICC250  
 Misc :  
 ALS Vial : 18 Sample Multiplier: 1

Instrument :  
 ECD\_P  
 ClientSampleId :  
 AR1248ICC250

Integration File signal 1: autoint1.e  
 Integration File signal 2: autoint2.e  
 Quant Time: Jul 26 02:41:31 2025  
 Quant Method : Z:\pestpcbsrv\HPCHEM1\ECD\_P\methods\PP072525.M  
 Quant Title : GC EXTRACTABLES  
 QLast Update : Sat Jul 26 02:30:37 2025  
 Response via : Initial Calibration  
 Integrator: ChemStation

Volume Inj. : 2 µl  
 Signal #1 Phase : ZB-MR1 Signal #2 Phase: ZB-MR2  
 Signal #1 Info : 30Mx0.32mmx 0.50µ Signal #2 Info : 30M x 0.32mm x 0.25µm

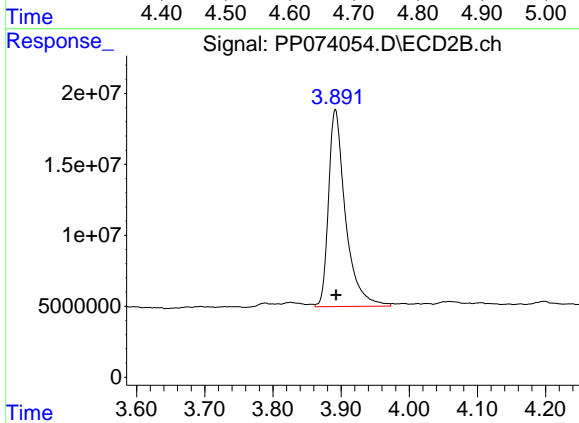




#1 Tetrachloro-m-xylene

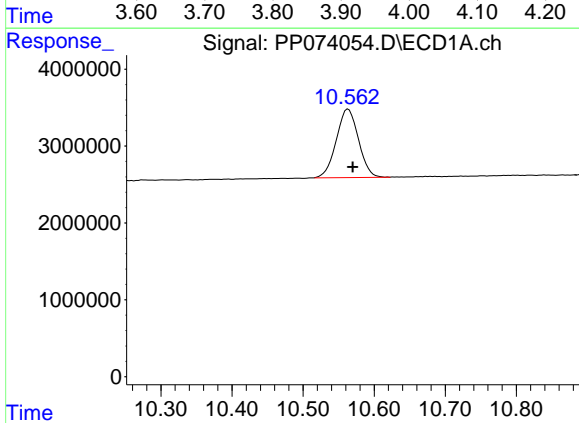
R.T.: 4.694 min  
 Delta R.T.: -0.004 min  
 Response: 28826041  
 Conc: 26.87 ng/ml

Instrument :  
 ECD\_P  
 ClientSampleId :  
 AR1248ICC250



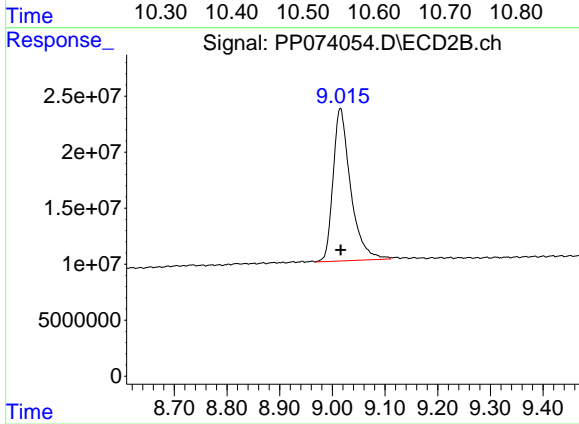
#1 Tetrachloro-m-xylene

R.T.: 3.892 min  
 Delta R.T.: 0.000 min  
 Response: 240041857  
 Conc: 23.90 ng/ml



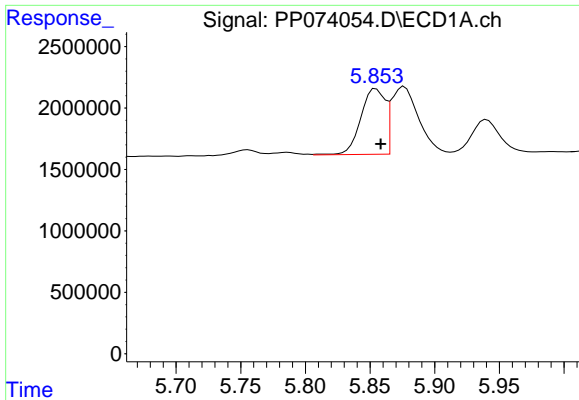
#2 Decachlorobiphenyl

R.T.: 10.563 min  
 Delta R.T.: -0.006 min  
 Response: 19304831  
 Conc: 26.06 ng/ml



#2 Decachlorobiphenyl

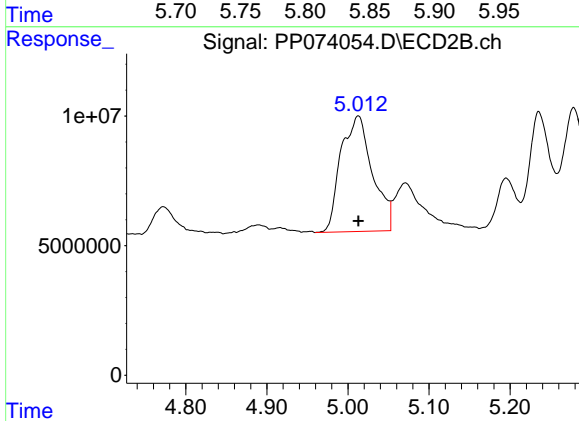
R.T.: 9.015 min  
 Delta R.T.: 0.000 min  
 Response: 314554619  
 Conc: 25.57 ng/ml



#21 AR-1248-1

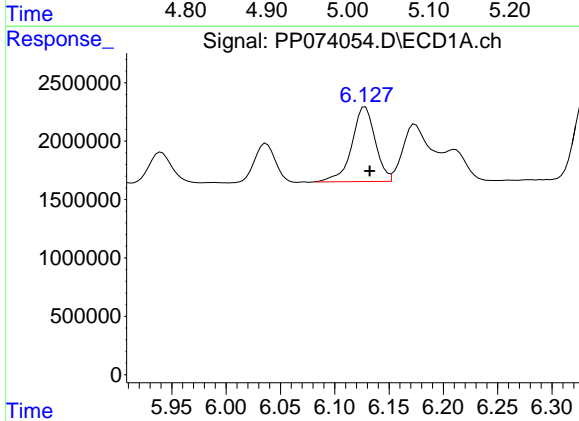
R.T.: 5.855 min  
 Delta R.T.: -0.004 min  
 Response: 6990004  
 Conc: 267.20 ng/ml

Instrument :  
 ECD\_P  
 ClientSampleId :  
 AR1248ICC250



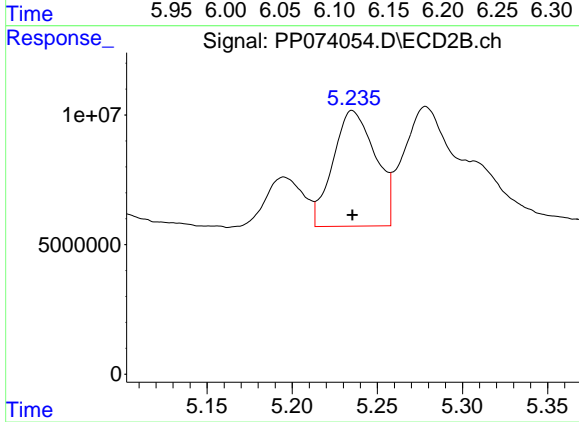
#21 AR-1248-1

R.T.: 5.013 min  
 Delta R.T.: 0.000 min  
 Response: 121122113  
 Conc: 247.93 ng/ml



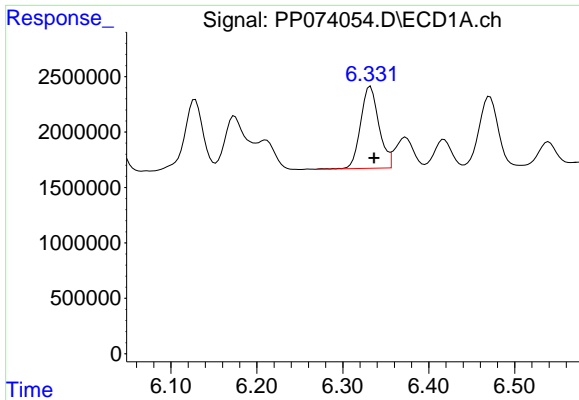
#22 AR-1248-2

R.T.: 6.128 min  
 Delta R.T.: -0.004 min  
 Response: 9574322  
 Conc: 268.19 ng/ml



#22 AR-1248-2

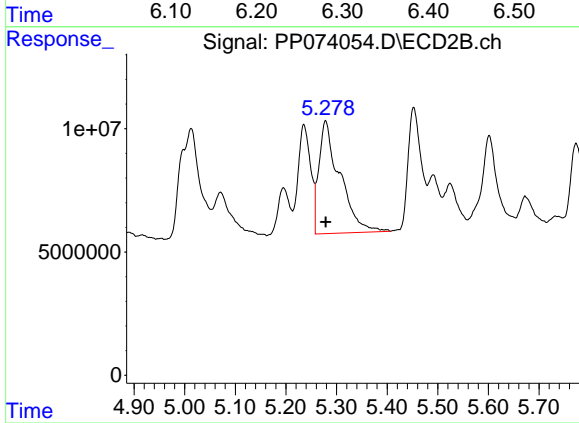
R.T.: 5.235 min  
 Delta R.T.: 0.000 min  
 Response: 77433725  
 Conc: 253.85 ng/ml



#23 AR-1248-3

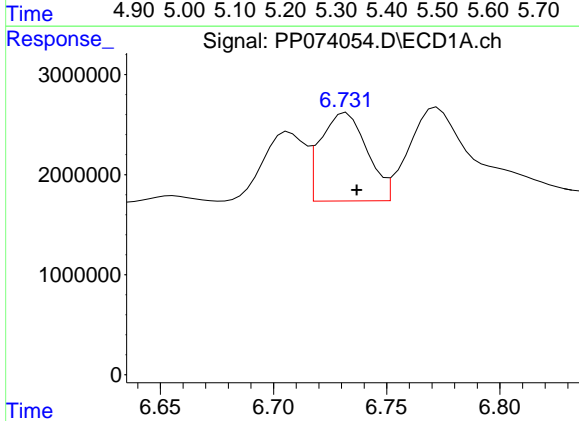
R.T.: 6.332 min  
 Delta R.T.: -0.004 min  
 Response: 10895488  
 Conc: 272.34 ng/ml

Instrument :  
 ECD\_P  
 ClientSampleId :  
 AR1248ICC250



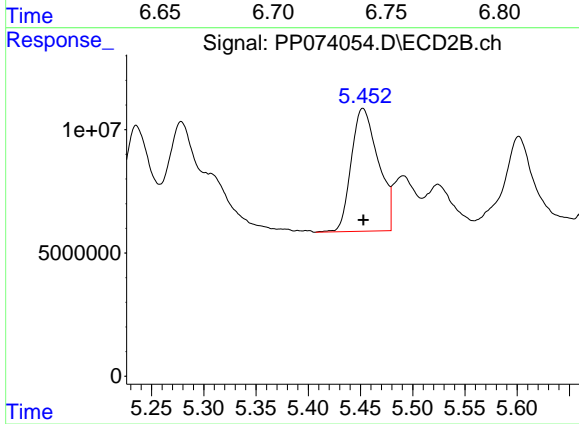
#23 AR-1248-3

R.T.: 5.278 min  
 Delta R.T.: 0.000 min  
 Response: 131451345  
 Conc: 353.32 ng/ml



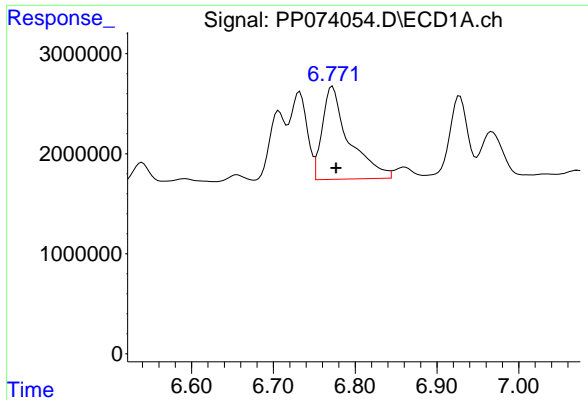
#24 AR-1248-4

R.T.: 6.732 min  
 Delta R.T.: -0.005 min  
 Response: 12655105  
 Conc: 276.53 ng/ml



#24 AR-1248-4

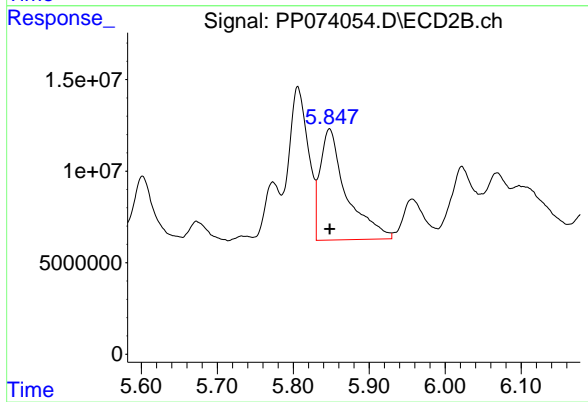
R.T.: 5.452 min  
 Delta R.T.: 0.000 min  
 Response: 89560806  
 Conc: 251.10 ng/ml



#25 AR-1248-5

R.T.: 6.772 min  
Delta R.T.: -0.004 min  
Response: 21094873  
Conc: 335.68 ng/ml

Instrument :  
ECD\_P  
ClientSampleId :  
AR1248ICC250



#25 AR-1248-5

R.T.: 5.848 min  
Delta R.T.: 0.000 min  
Response: 146071406  
Conc: 247.60 ng/ml