

Data Path : Z:\pestpcbsrv\HPCHEM1\ECD_P\Data\PP072525\
 Data File : PP074060.D
 Signal(s) : Signal #1: ECD1A.ch Signal #2: ECD2B.ch
 Acq On : 25 Jul 2025 20:54
 Operator : YP\AJ
 Sample : AR1254ICC050
 Misc :
 ALS Vial : 24 Sample Multiplier: 1

Instrument :
 ECD_P
ClientSampleId :
 AR1254ICC050

Integration File signal 1: autoint1.e
 Integration File signal 2: autoint2.e
 Quant Time: Jul 26 03:38:13 2025
 Quant Method : Z:\pestpcbsrv\HPCHEM1\ECD_P\methods\PP072525.M
 Quant Title : GC EXTRACTABLES
 QLast Update : Sat Jul 26 03:26:36 2025
 Response via : Initial Calibration
 Integrator: ChemStation

Volume Inj. : 2 µl
 Signal #1 Phase : ZB-MR1 Signal #2 Phase: ZB-MR2
 Signal #1 Info : 30Mx0.32mmx 0.50µ Signal #2 Info : 30M x 0.32mm x 0.25µm

| Compound | RT#1 | RT#2 | Resp#1 | Resp#2 | ng/ml | ng/ml |
|-----------------------------|--------|-------|---------|----------|--------|----------|
| ----- | | | | | | |
| System Monitoring Compounds | | | | | | |
| 1) SA Tetrachlo... | 4.695 | 3.892 | 5351568 | 30635704 | 4.946 | 3.101 # |
| 2) SA Decachlor... | 10.568 | 9.014 | 2887118 | 45304305 | 3.877 | 3.708 |
| Target Compounds | | | | | | |
| 26) L6 AR-1254-1 | 6.711 | 5.809 | 2398621 | 28276737 | 48.520 | 38.364 |
| 27) L6 AR-1254-2 | 6.928 | 5.957 | 3780185 | 21844756 | 54.502 | 38.908 # |
| 28) L6 AR-1254-3 | 7.291 | 6.364 | 3775054 | 32303438 | 51.904 | 34.385 # |
| 29) L6 AR-1254-4 | 7.575 | 6.593 | 2437780 | 24115152 | 45.667 | 31.816 # |
| 30) L6 AR-1254-5 | 7.992 | 7.014 | 2464800 | 29554906 | 37.787 | 34.923 |
| ----- | | | | | | |

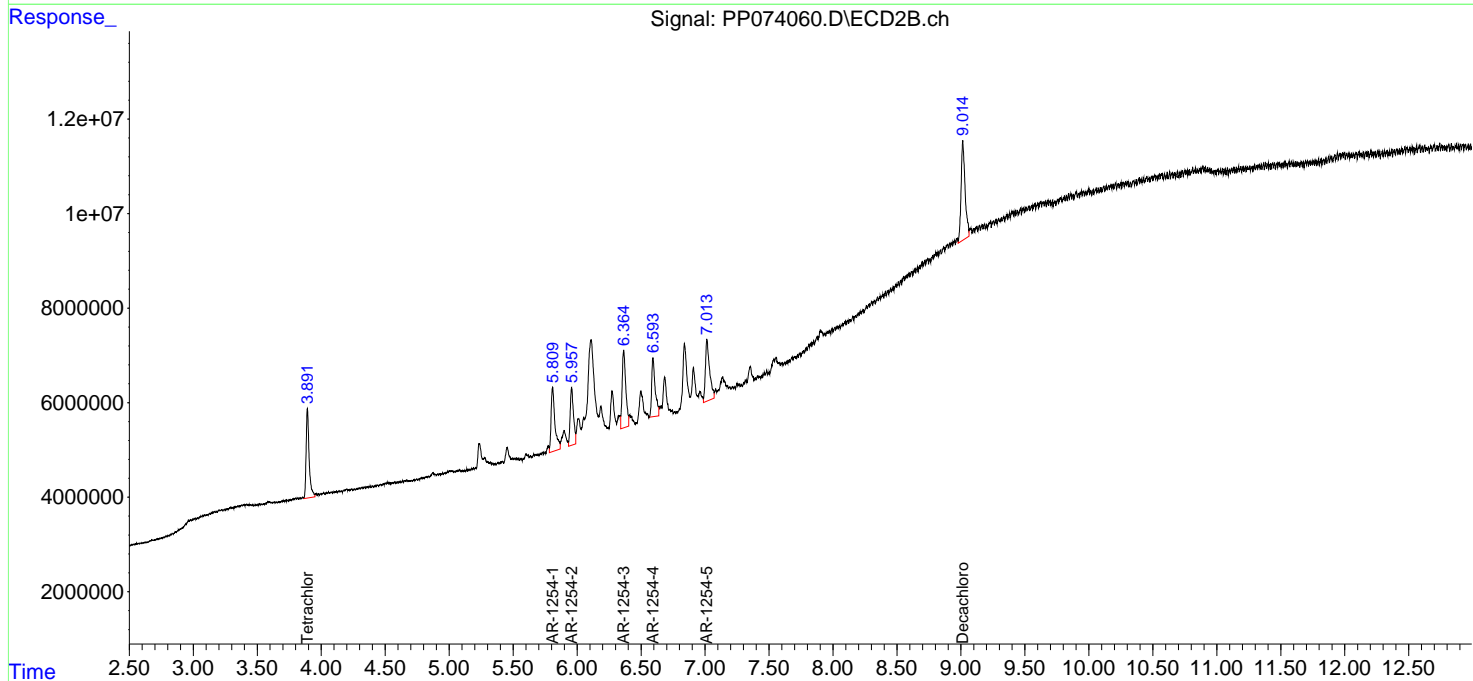
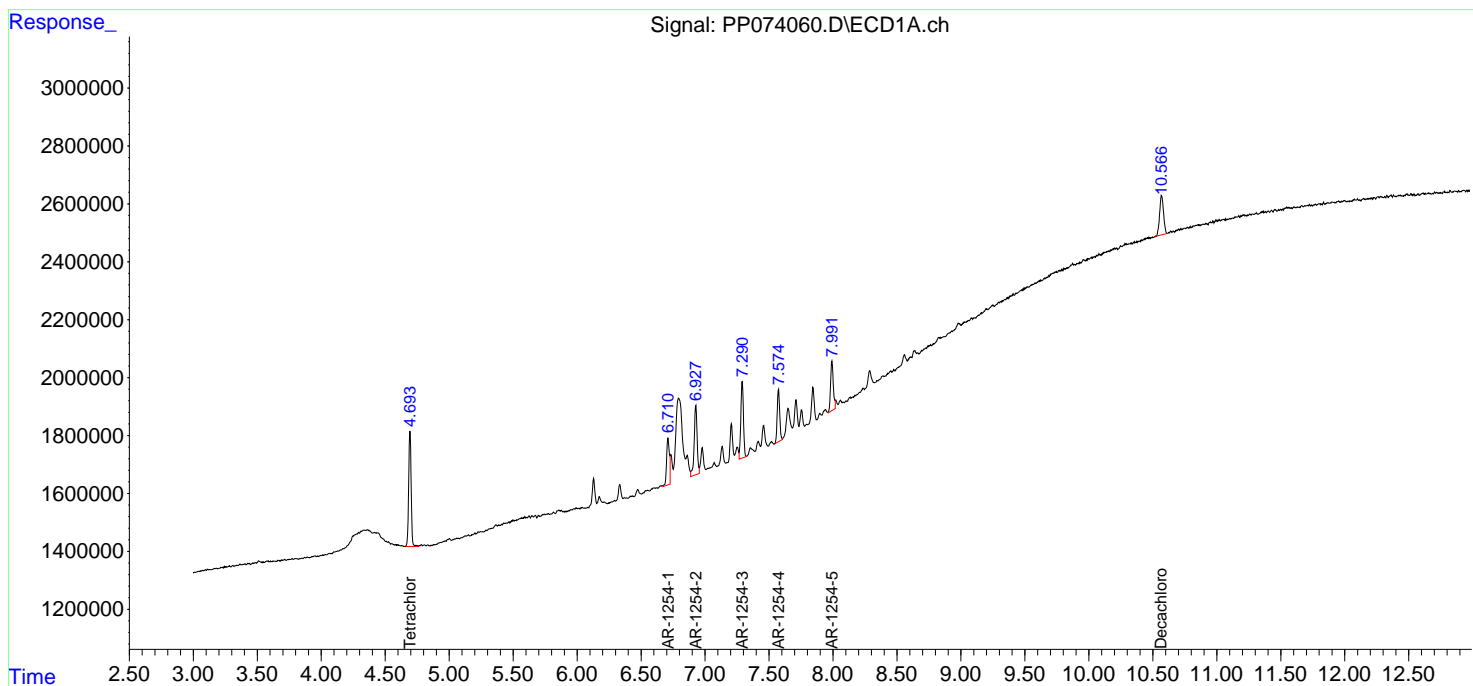
(f)=RT Delta > 1/2 Window (#)=Amounts differ by > 25% (m)=manual int.

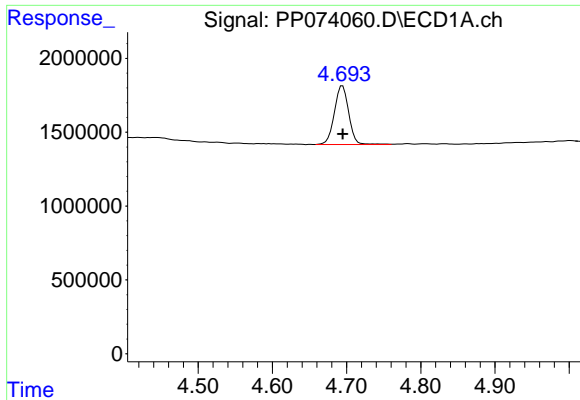
Data Path : Z:\pestpcbsrv\HPCHEM1\ECD_P\Data\PP072525\
 Data File : PP074060.D
 Signal(s) : Signal #1: ECD1A.ch Signal #2: ECD2B.ch
 Acq On : 25 Jul 2025 20:54
 Operator : YP\AJ
 Sample : AR1254IC050
 Misc :
 ALS Vial : 24 Sample Multiplier: 1

Instrument :
 ECD_P
 ClientSampleId :
 AR1254IC050

Integration File signal 1: autoint1.e
 Integration File signal 2: autoint2.e
 Quant Time: Jul 26 03:38:13 2025
 Quant Method : Z:\pestpcbsrv\HPCHEM1\ECD_P\methods\PP072525.M
 Quant Title : GC EXTRACTABLES
 QLast Update : Sat Jul 26 03:26:36 2025
 Response via : Initial Calibration
 Integrator: ChemStation

Volume Inj. : 2 µl
 Signal #1 Phase : ZB-MR1 Signal #2 Phase: ZB-MR2
 Signal #1 Info : 30Mx0.32mmx 0.50µ Signal #2 Info : 30M x 0.32mm x 0.25µm

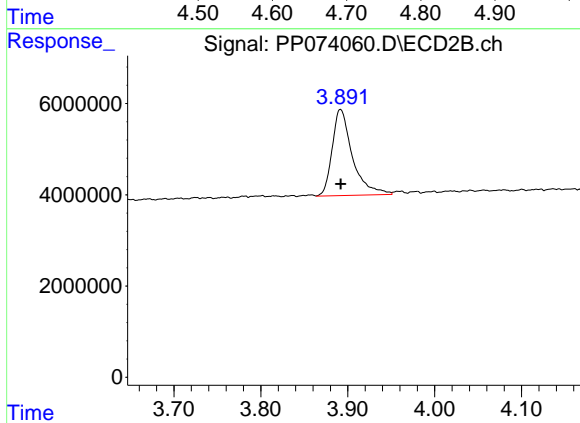




#1 Tetrachloro-m-xylene

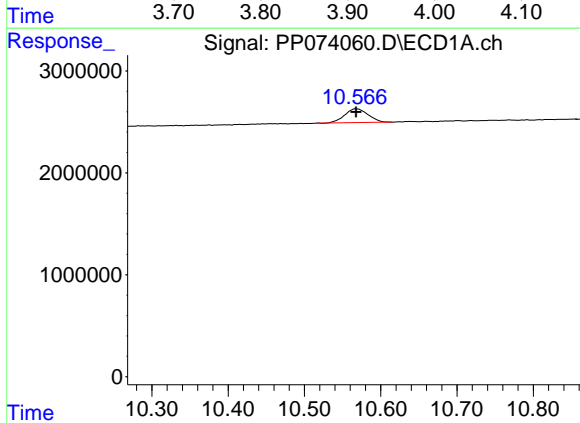
R.T.: 4.695 min
 Delta R.T.: 0.000 min
 Response: 5351568
 Conc: 4.95 ng/ml

Instrument :
 ECD_P
 ClientSampleId :
 AR1254IC050



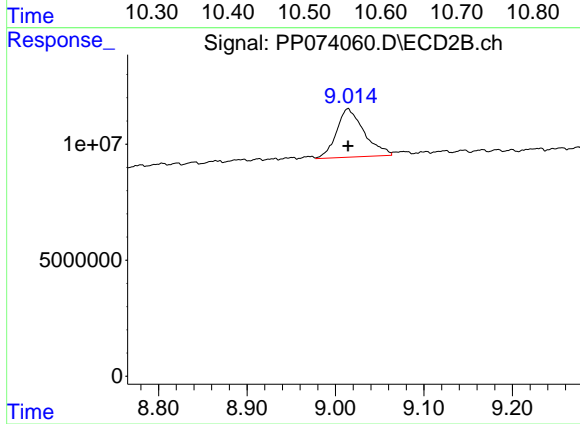
#1 Tetrachloro-m-xylene

R.T.: 3.892 min
 Delta R.T.: 0.000 min
 Response: 30635704
 Conc: 3.10 ng/ml



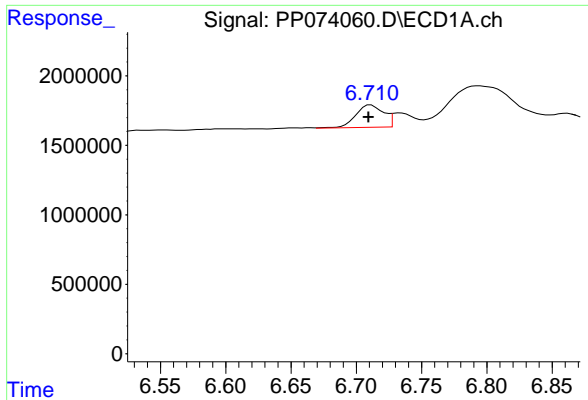
#2 Decachlorobiphenyl

R.T.: 10.568 min
 Delta R.T.: 0.000 min
 Response: 2887118
 Conc: 3.88 ng/ml



#2 Decachlorobiphenyl

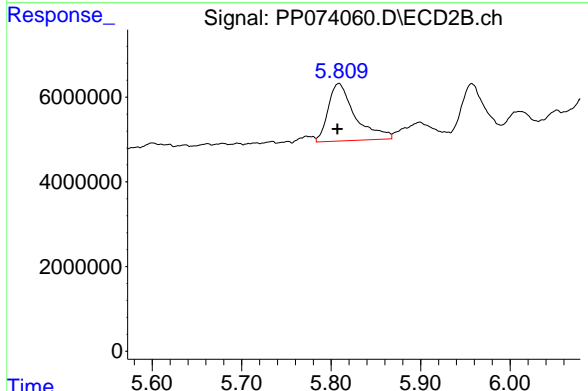
R.T.: 9.014 min
 Delta R.T.: 0.000 min
 Response: 45304305
 Conc: 3.71 ng/ml



#26 AR-1254-1

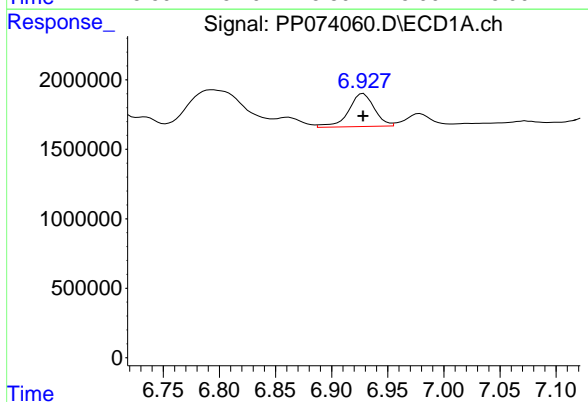
R.T.: 6.711 min
 Delta R.T.: 0.002 min
 Response: 2398621
 Conc: 48.52 ng/ml

Instrument :
 ECD_P
 ClientSampleId :
 AR1254ICC050



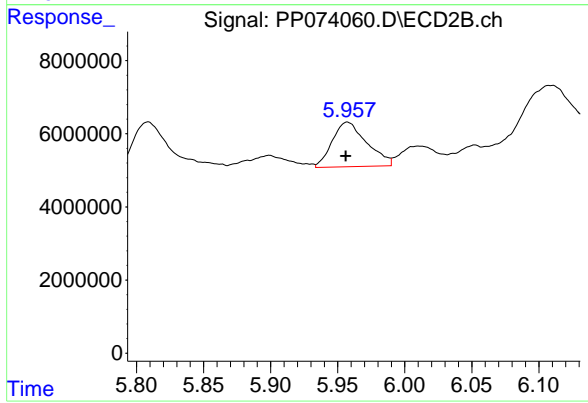
#26 AR-1254-1

R.T.: 5.809 min
 Delta R.T.: 0.002 min
 Response: 28276737
 Conc: 38.36 ng/ml



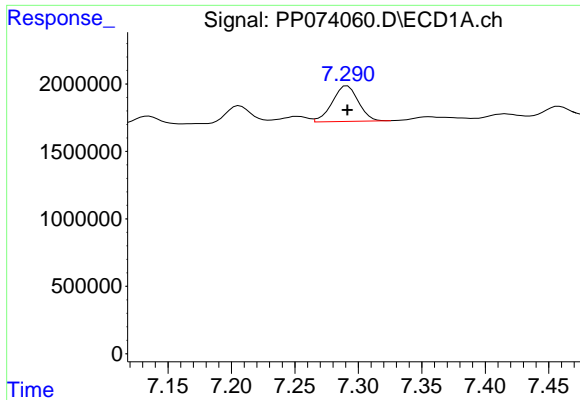
#27 AR-1254-2

R.T.: 6.928 min
 Delta R.T.: 0.000 min
 Response: 3780185
 Conc: 54.50 ng/ml



#27 AR-1254-2

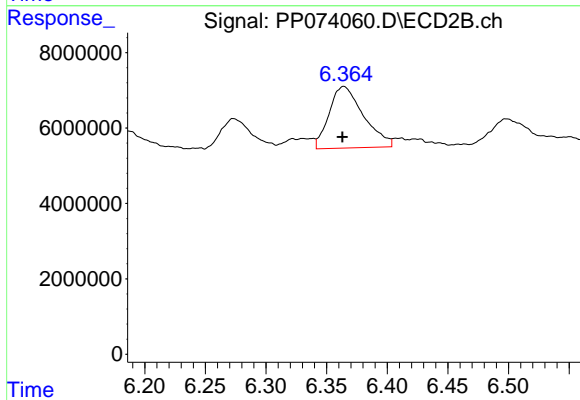
R.T.: 5.957 min
 Delta R.T.: 0.001 min
 Response: 21844756
 Conc: 38.91 ng/ml



#28 AR-1254-3

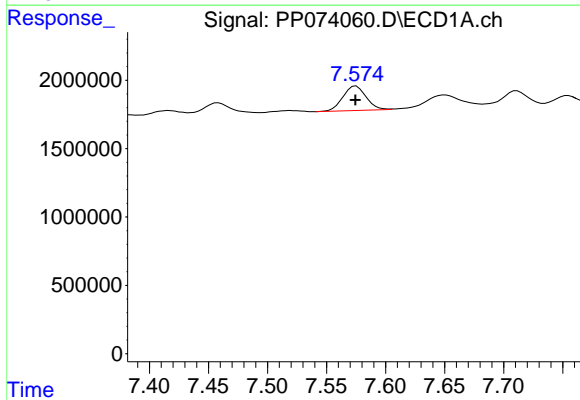
R.T.: 7.291 min
 Delta R.T.: 0.000 min
 Response: 3775054
 Conc: 51.90 ng/ml

Instrument :
 ECD_P
 ClientSampleId :
 AR1254ICC050



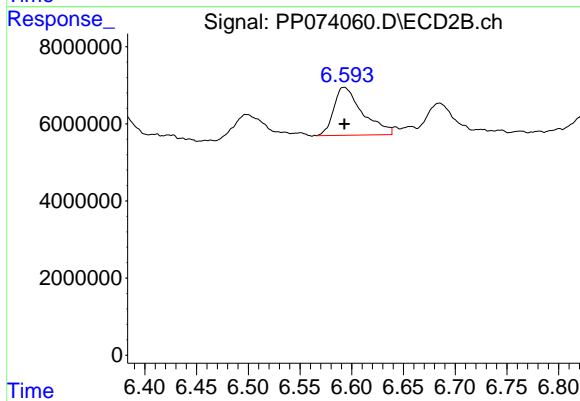
#28 AR-1254-3

R.T.: 6.364 min
 Delta R.T.: 0.001 min
 Response: 32303438
 Conc: 34.38 ng/ml



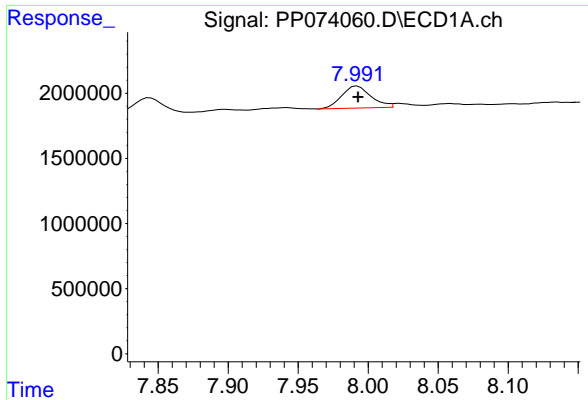
#29 AR-1254-4

R.T.: 7.575 min
 Delta R.T.: 0.000 min
 Response: 2437780
 Conc: 45.67 ng/ml



#29 AR-1254-4

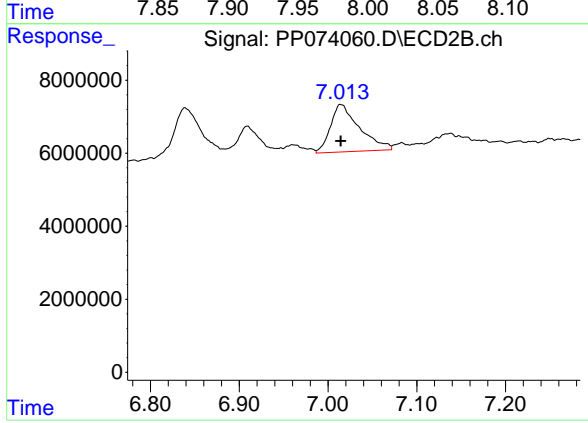
R.T.: 6.593 min
 Delta R.T.: 0.000 min
 Response: 24115152
 Conc: 31.82 ng/ml



#30 AR-1254-5

R.T.: 7.992 min
Delta R.T.: 0.000 min
Response: 2464800
Conc: 37.79 ng/ml

Instrument :
ECD_P
ClientSampleId :
AR1254ICC050



#30 AR-1254-5

R.T.: 7.014 min
Delta R.T.: 0.000 min
Response: 29554906
Conc: 34.92 ng/ml