

Data Path : Z:\pestpcbsrv\HPCHEM1\ECD_P\Data\PP072618\
 Data File : PP026870.D
 Signal(s) : Signal #1: ECD1A.CH Signal #2: ECD2B.CH
 Acq On : 26 Jul 2018 16:43
 Operator : EI\MA
 Sample : HSTDCCC750
 Misc :
 ALS Vial : 3 Sample Multiplier: 1

Instrument :
 ECD_P
ClientSampleId :
 HSTDCCC750

Manual Integrations
APPROVED
 Sohil
 7/27/2018 3:37:54 PM

Integration File signal 1: autoint1.e
 Integration File signal 2: autoint2.e
 Quant Time: Jul 27 08:18:52 2018
 Quant Method : Z:\pestpcbsrv\HPCHEM1\ECD_P\methods\PP071318.M
 Quant Title : 8080.M
 QLast Update : Fri Jul 13 23:16:25 2018
 Response via : Initial Calibration
 Integrator: ChemStation 6890 Scale Mode: Large solvent peaks clipped

Volume Inj. : 2 µl
 Signal #1 Phase : ZB-CLPesticides-1 Signal #2 Phase: ZB-CLPesticides-2
 Signal #1 Info : 30M x 0.32mm x0.5 Signal #2 Info : 30M x 0.32mm x 0.25µm

Compound	RT#1	RT#2	Resp#1	Resp#2	ng/ml	ng/ml

System Monitoring Compounds						
4) S 2,4-DCAA	12.045	12.156	175.7E6	308.6E6	787.174	772.478
Target Compounds						
1) T Dalapon	3.311	2.983	366.6E6	381.6E6	711.814	682.623
2) T 3,5-DICHL...	10.458	10.248	307.6E6	382.2E6	684.487	716.345
3) T 4-Nitroph...	11.618	11.296	306.8E6	165.8E6	651.719	695.253
5) T DICAMBA	12.367	12.467	936.7E6	1155.4E6	757.508	725.001
6) T MCPP	12.712	12.660	29123233	65336016	73.851	70.874m
7) T MCPA	12.955	13.050	45639736	101.6E6	76.525	70.722
8) T DICHLORPROP	13.562	13.582	200.1E6	273.8E6	665.117m	708.665
9) T 2,4-D	13.911	14.065	265.0E6	371.2E6	736.672	708.025
10) T Pentachlo...	14.332	14.679	5101.2E6	4652.5E6	754.215	704.776
11) T 2,4,5-TP ...	15.193	15.250	1920.8E6	1858.3E6	760.907	718.943
12) T 2,4,5-T	15.581	15.886	1688.1E6	1528.9E6	739.582	694.949
13) T 2,4-DB	16.342	16.489	151.0E6	199.0E6	768.900	688.579
14) T DINOSEB	17.835	16.884	1296.0E6	1257.5E6	705.243	704.806
15) T Picloram	17.590	18.256	2370.9E6	2085.2E6	621.916	574.062
16) T DCPA	18.198	18.144	2714.3E6	2257.6E6	742.105	703.208

(f)=RT Delta > 1/2 Window (#)=Amounts differ by > 25% (m)=manual int.

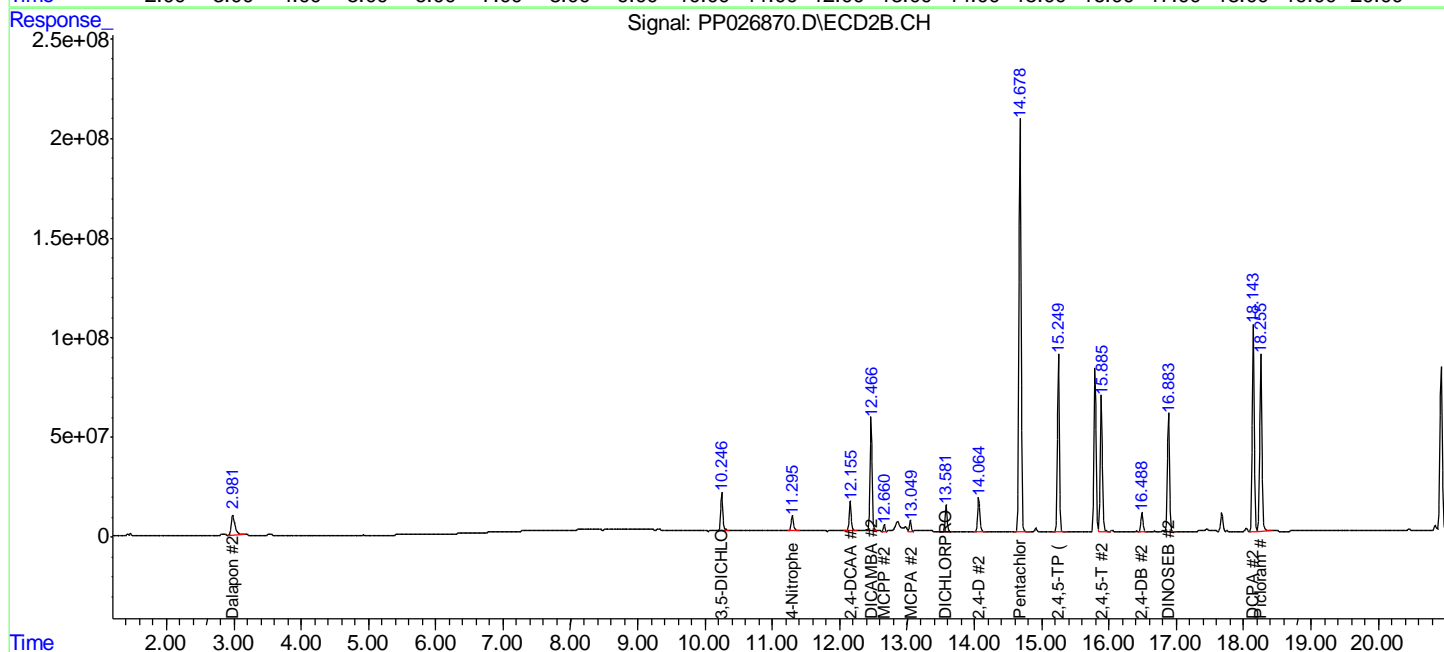
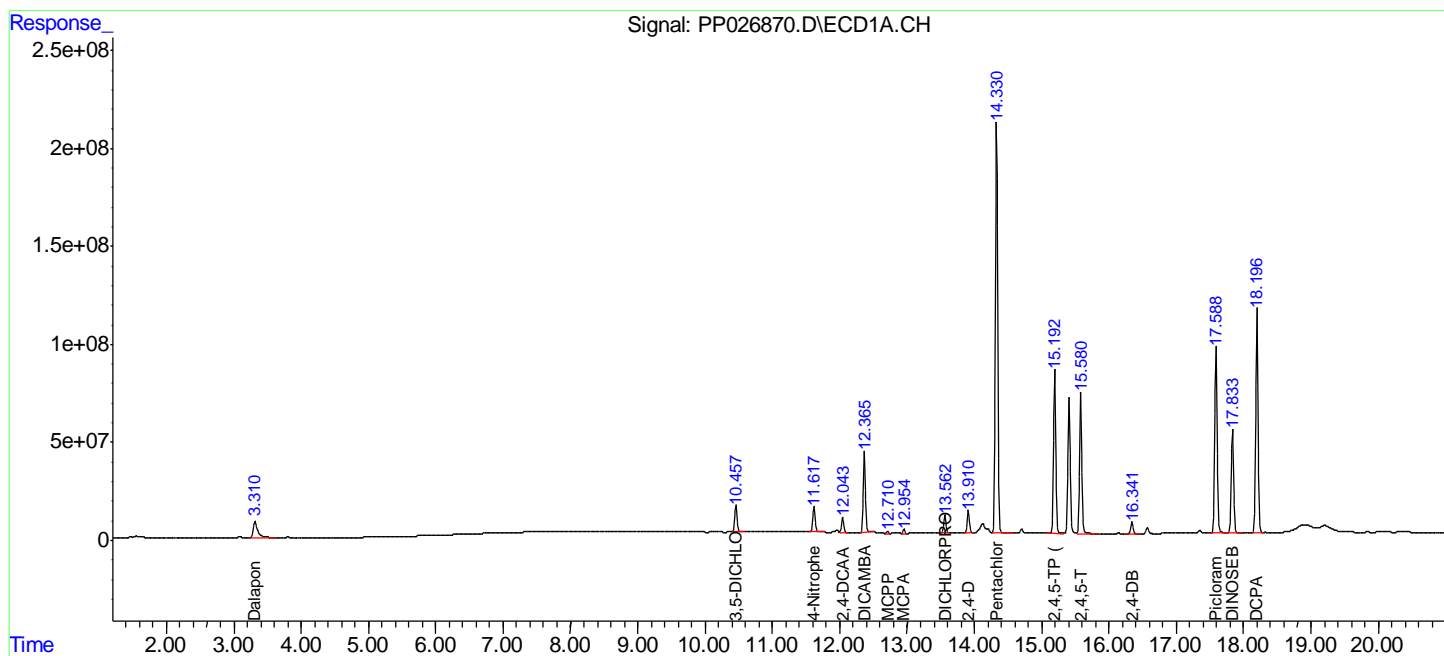
Data Path : Z:\pestpcbsrv\HPCHEM1\ECD_P\Data\PP072618\
 Data File : PP026870.D
 Signal(s) : Signal #1: ECD1A.CH Signal #2: ECD2B.CH
 Acq On : 26 Jul 2018 16:43
 Operator : EI\MA
 Sample : HSTDCCC750
 Misc :
 ALS Vial : 3 Sample Multiplier: 1

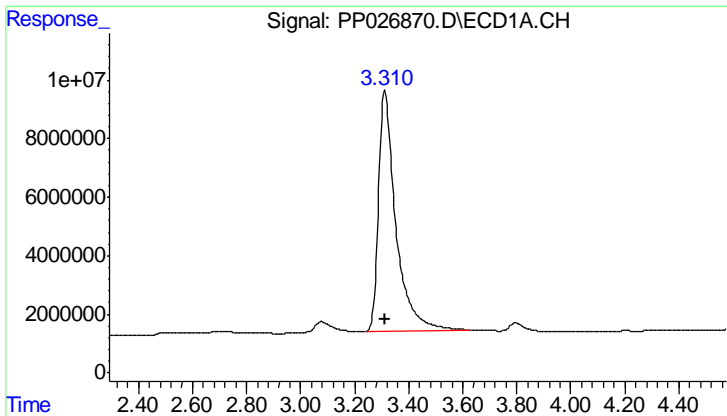
Instrument :
 ECD_P
 Client Sampled :
 HSTDCCC750

Manual Integrations
APPROVED
 Sohil
 7/27/2018 3:37:54 PM

Integration File signal 1: autoint1.e
 Integration File signal 2: autoint2.e
 Quant Time: Jul 27 08:18:52 2018
 Quant Method : Z:\pestpcbsrv\HPCHEM1\ECD_P\methods\PP071318.M
 Quant Title : 8080.M
 QLast Update : Fri Jul 13 23:16:25 2018
 Response via : Initial Calibration
 Integrator: ChemStation 6890 Scale Mode: Large solvent peaks clipped

Volume Inj. : 2 µl
 Signal #1 Phase : ZB-CLPesticides-1 Signal #2 Phase: ZB-CLPesticides-2
 Signal #1 Info : 30M x 0.32mm x0.5 Signal #2 Info : 30M x 0.32mm x 0.25µm

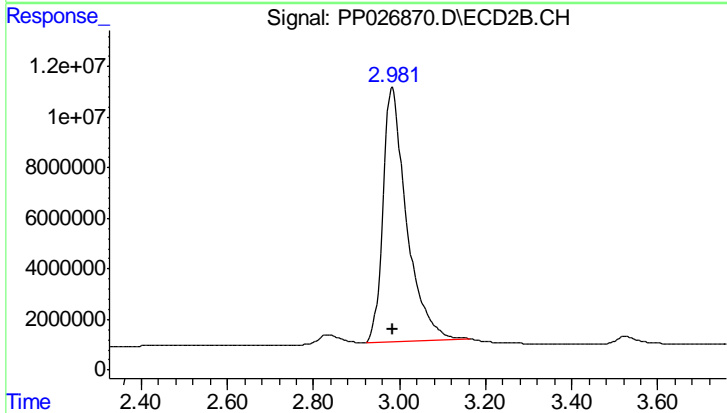




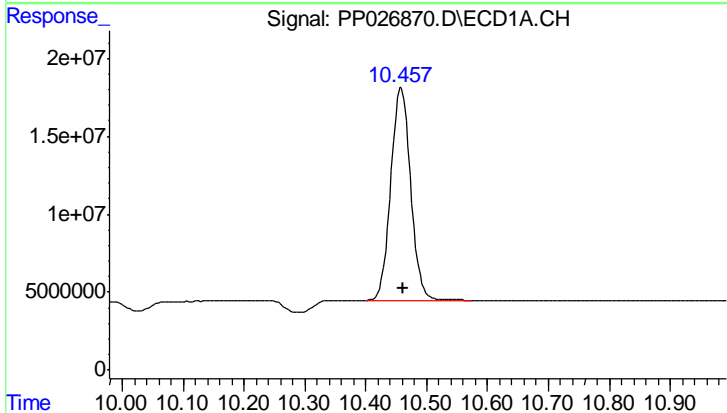
#1 Dalapon
 R.T.: 3.311 min
 Delta R.T.: 0.000 min
 Response: 366561029
 Conc: 711.81 ng/ml

Instrument :
 ECD_P
 ClientSampleId :
 HSTDCCC750

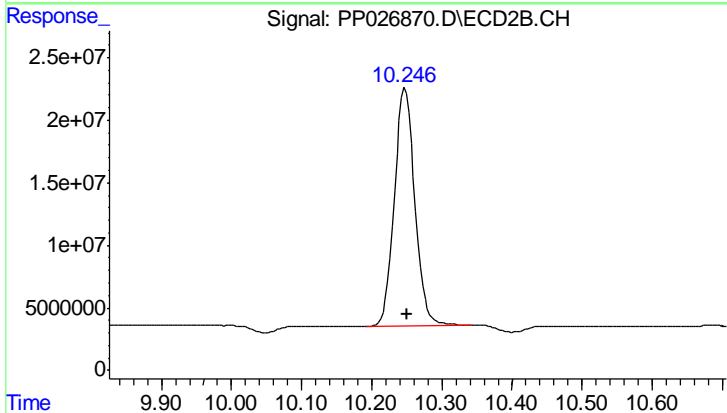
Manual Integrations
 APPROVED
 Sohil
 7/27/2018 3:37:54 PM



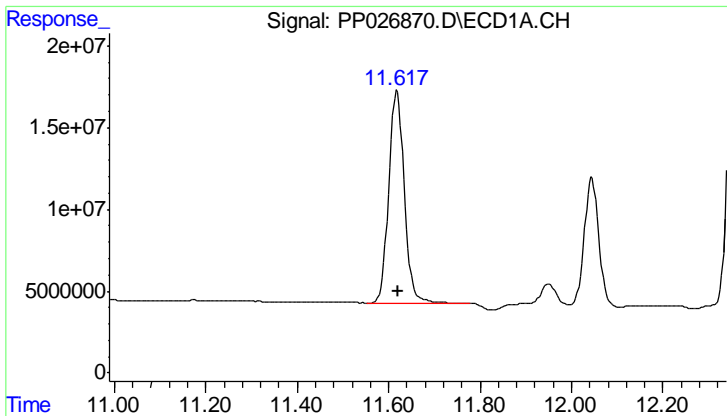
#1 Dalapon
 R.T.: 2.983 min
 Delta R.T.: 0.000 min
 Response: 381626573
 Conc: 682.62 ng/ml



#2 3,5-DICHLOROBENZOIC ACID
 R.T.: 10.458 min
 Delta R.T.: -0.002 min
 Response: 307569402
 Conc: 684.49 ng/ml



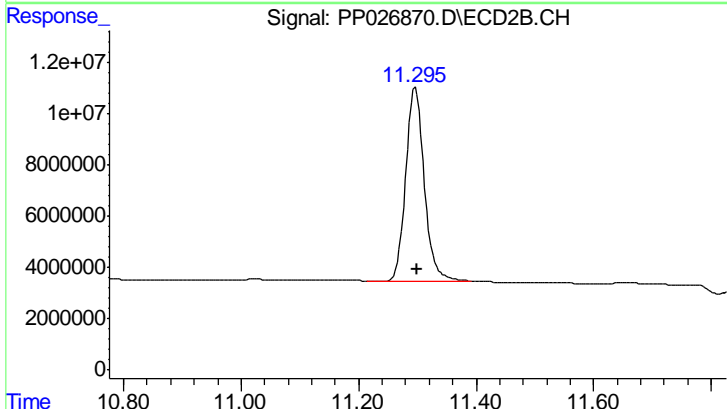
#2 3,5-DICHLOROBENZOIC ACID
 R.T.: 10.248 min
 Delta R.T.: -0.003 min
 Response: 382192383
 Conc: 716.34 ng/ml



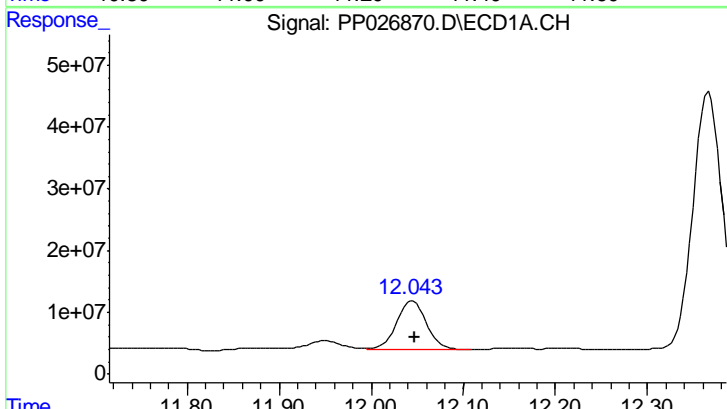
#3 4-Nitrophenol
 R.T.: 11.618 min
 Delta R.T.: -0.002 min
 Response: 306801821
 Conc: 651.72 ng/ml

Instrument :
 ECD_P
 ClientSampleId :
 HSTDCCC750

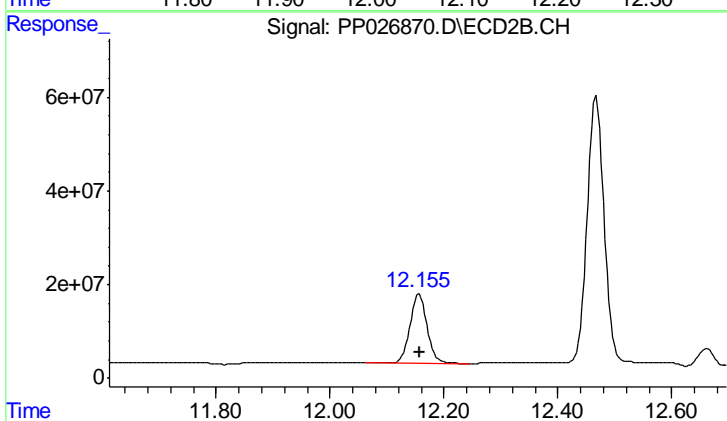
Manual Integrations
 APPROVED
 Sohil
 7/27/2018 3:37:54 PM



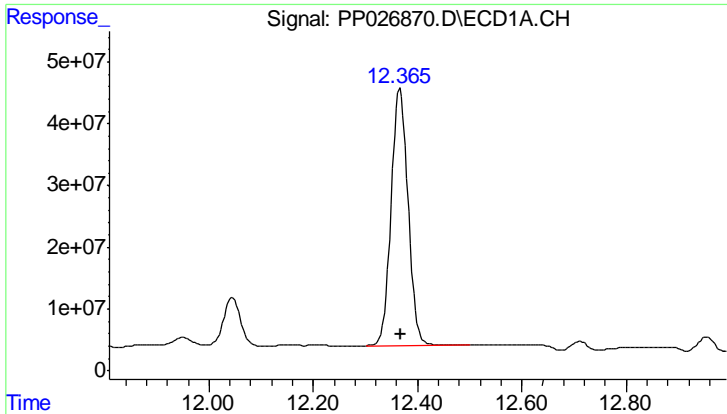
#3 4-Nitrophenol
 R.T.: 11.296 min
 Delta R.T.: -0.004 min
 Response: 165831883
 Conc: 695.25 ng/ml



#4 2,4-DCAA
 R.T.: 12.045 min
 Delta R.T.: -0.002 min
 Response: 175660257
 Conc: 787.17 ng/ml



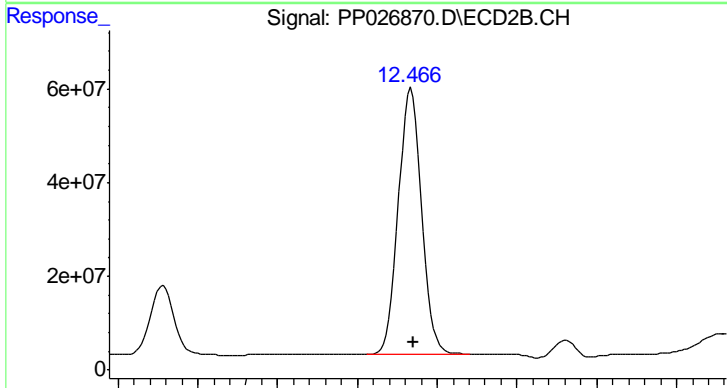
#4 2,4-DCAA
 R.T.: 12.156 min
 Delta R.T.: -0.002 min
 Response: 308625252
 Conc: 772.48 ng/ml



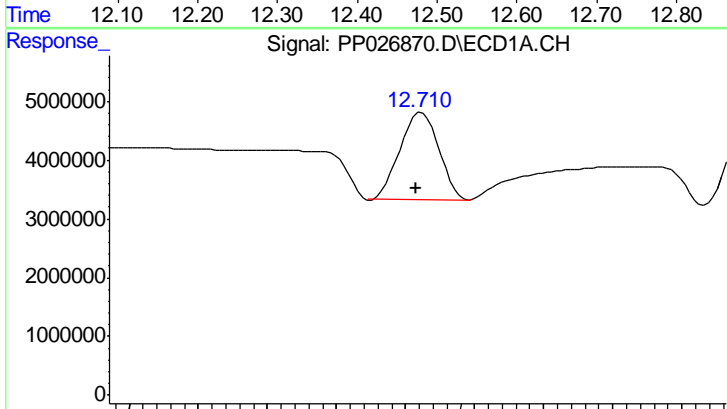
#5 DICAMBA
 R.T.: 12.367 min
 Delta R.T.: -0.002 min
 Response: 936656473
 Conc: 757.51 ng/ml

Instrument :
 ECD_P
 ClientSampled :
 HSTDCCC750

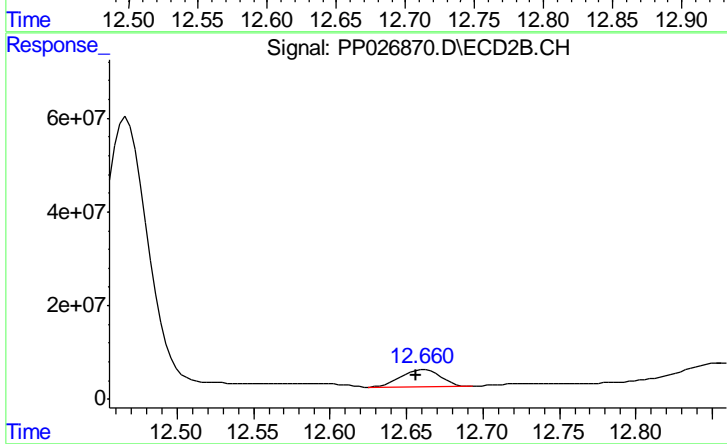
Manual Integrations
 APPROVED
 Sohil
 7/27/2018 3:37:54 PM



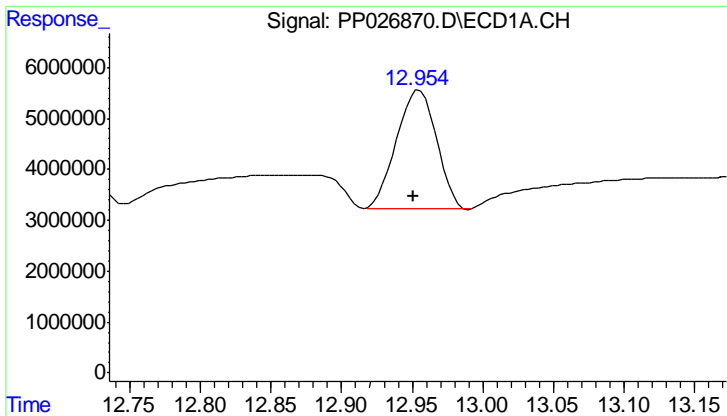
#5 DICAMBA
 R.T.: 12.467 min
 Delta R.T.: -0.003 min
 Response: 1155385806
 Conc: 725.00 ng/ml



#6 MCPP
 R.T.: 12.712 min
 Delta R.T.: 0.004 min
 Response: 29123233
 Conc: 73.85 ug/ml



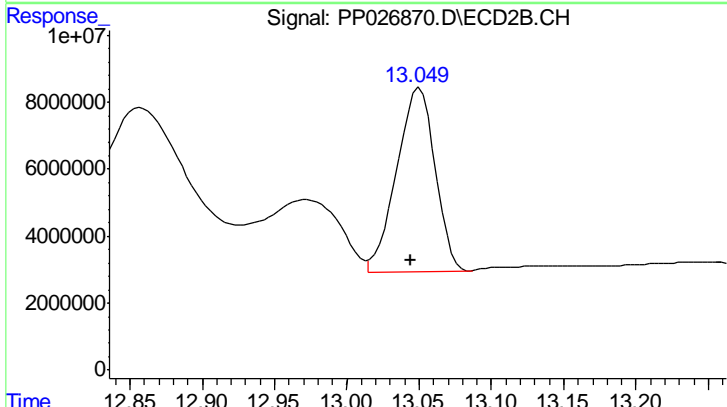
#6 MCPP
 R.T.: 12.660 min
 Delta R.T.: 0.004 min
 Response: 65336016
 Conc: 70.87 ug/ml m



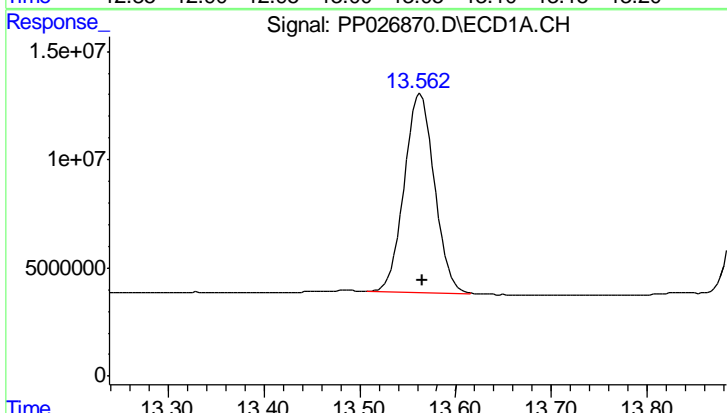
#7 MCPA
 R.T.: 12.955 min
 Delta R.T.: 0.004 min
 Response: 45639736
 Conc: 76.52 ug/ml

Instrument :
 ECD_P
ClientSampled :
 HSTDCCC750

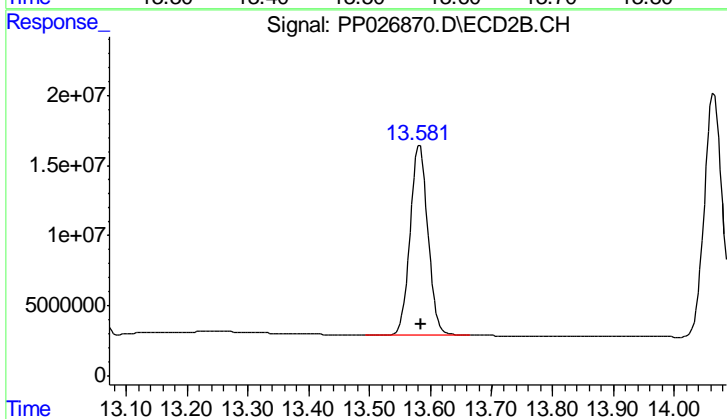
Manual Integrations
APPROVED
 Sohil
 7/27/2018 3:37:54 PM



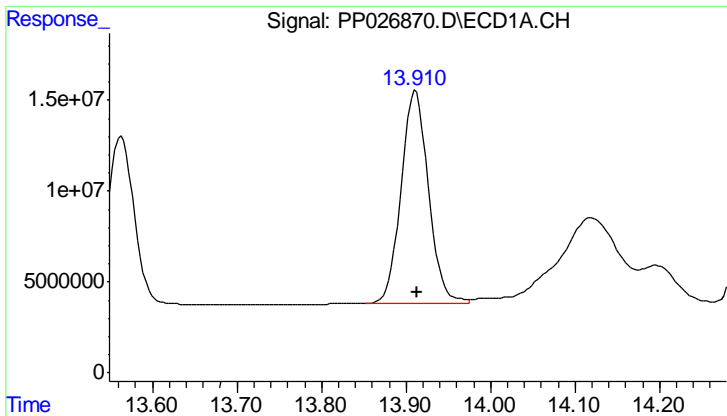
#7 MCPA
 R.T.: 13.050 min
 Delta R.T.: 0.006 min
 Response: 101582534
 Conc: 70.72 ug/ml



#8 DICHLORPROP
 R.T.: 13.562 min
 Delta R.T.: -0.003 min
 Response: 200060451
 Conc: 665.12 ng/ml m



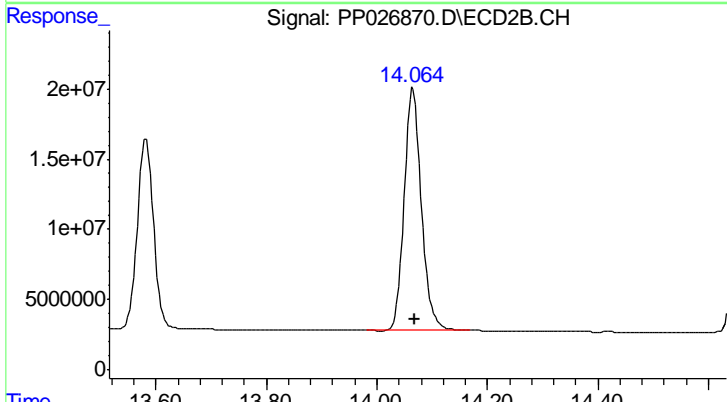
#8 DICHLORPROP
 R.T.: 13.582 min
 Delta R.T.: -0.002 min
 Response: 273829061
 Conc: 708.66 ng/ml



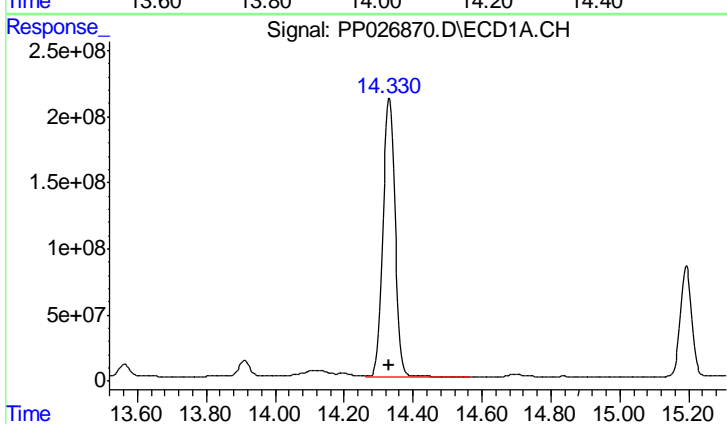
#9 2,4-D
 R.T.: 13.911 min
 Delta R.T.: -0.002 min
 Response: 264986877
 Conc: 736.67 ng/ml

Instrument :
 ECD_P
 ClientSampleId :
 HSTDCCC750

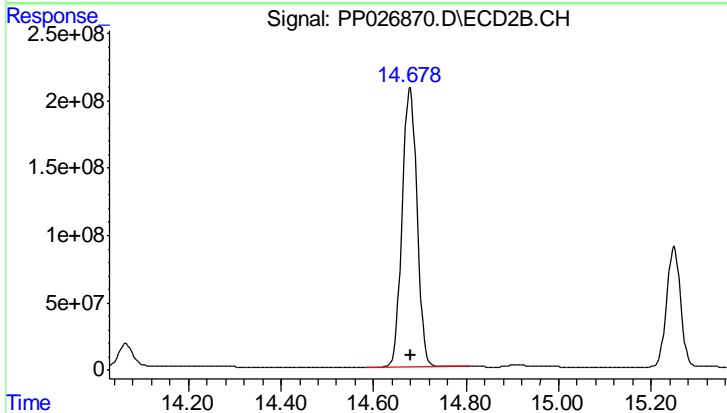
Manual Integrations
 APPROVED
 Sohil
 7/27/2018 3:37:54 PM



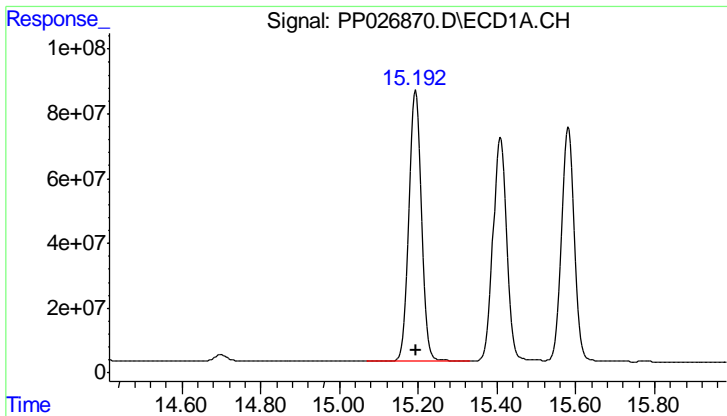
#9 2,4-D
 R.T.: 14.065 min
 Delta R.T.: -0.003 min
 Response: 371188809
 Conc: 708.03 ng/ml



#10 Pentachlorophenol
 R.T.: 14.332 min
 Delta R.T.: 0.000 min
 Response: 5101168508
 Conc: 754.21 ng/ml



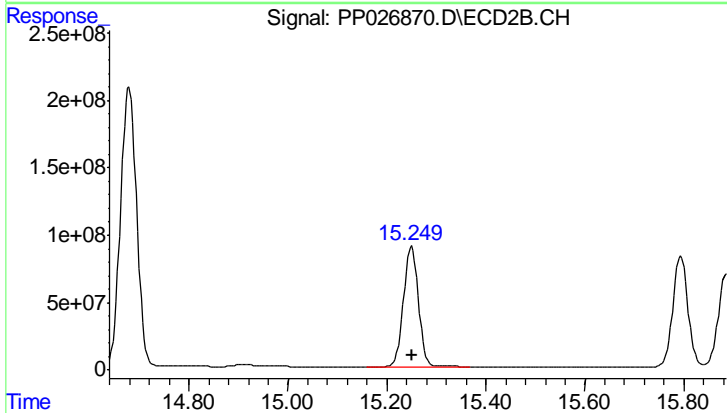
#10 Pentachlorophenol
 R.T.: 14.679 min
 Delta R.T.: 0.000 min
 Response: 4652489108
 Conc: 704.78 ng/ml



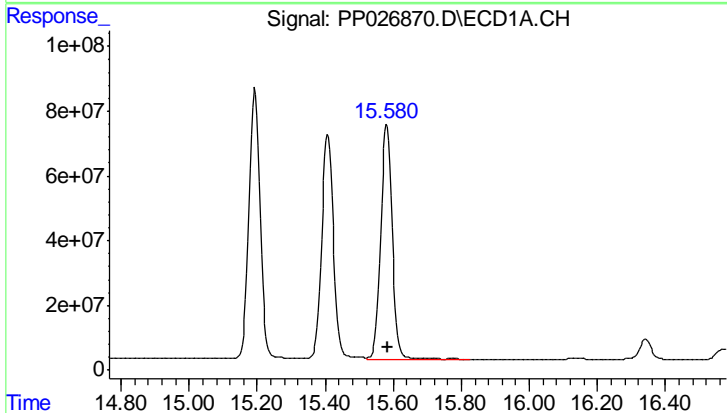
#11 2,4,5-TP (SILVEX)
 R.T.: 15.193 min
 Delta R.T.: -0.001 min
 Response: 1920820076
 Conc: 760.91 ng/ml

Instrument :
 ECD_P
ClientSampled :
 HSTDCCC750

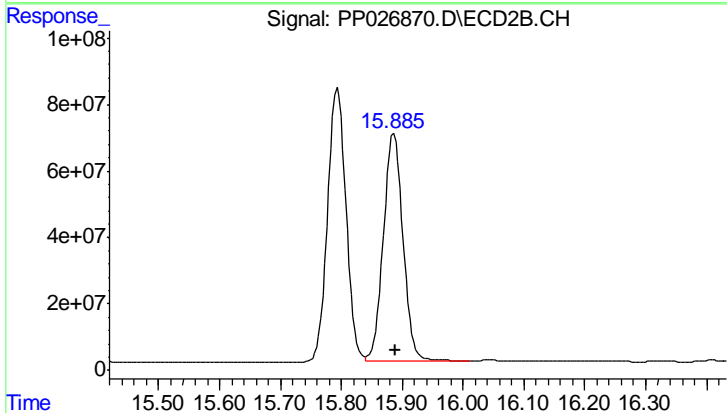
Manual Integrations
APPROVED
 Sohil
 7/27/2018 3:37:54 PM



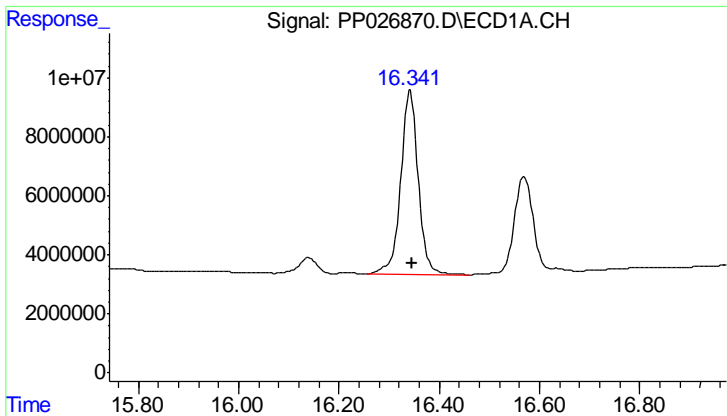
#11 2,4,5-TP (SILVEX)
 R.T.: 15.250 min
 Delta R.T.: 0.000 min
 Response: 1858277684
 Conc: 718.94 ng/ml



#12 2,4,5-T
 R.T.: 15.581 min
 Delta R.T.: -0.001 min
 Response: 1688103452
 Conc: 739.58 ng/ml



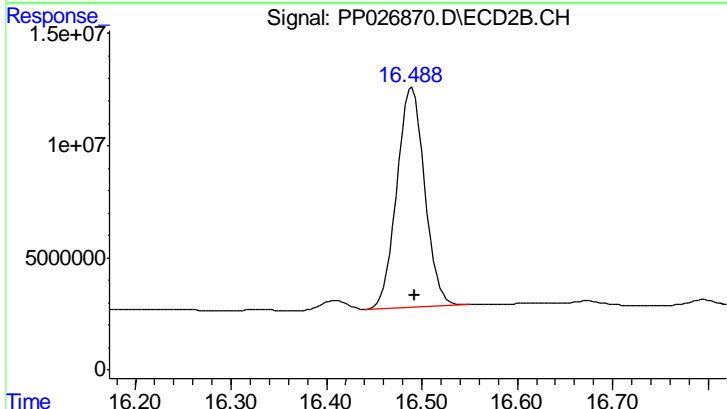
#12 2,4,5-T
 R.T.: 15.886 min
 Delta R.T.: -0.002 min
 Response: 1528934643
 Conc: 694.95 ng/ml



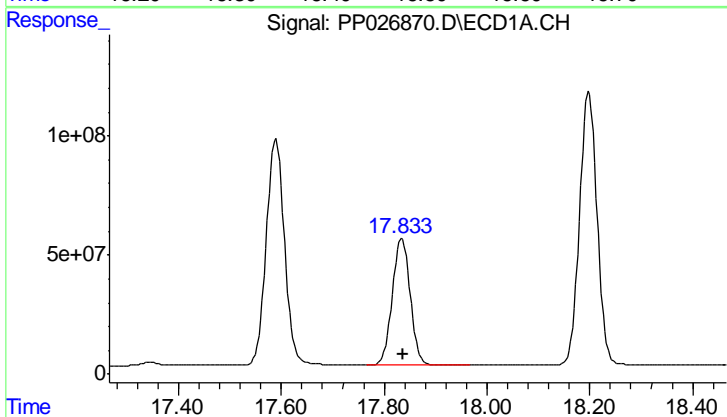
#13 2,4-DB
 R.T.: 16.342 min
 Delta R.T.: -0.003 min
 Response: 150968545
 Conc: 768.90 ng/ml

Instrument :
 ECD_P
 ClientSampleId :
 HSTDCCC750

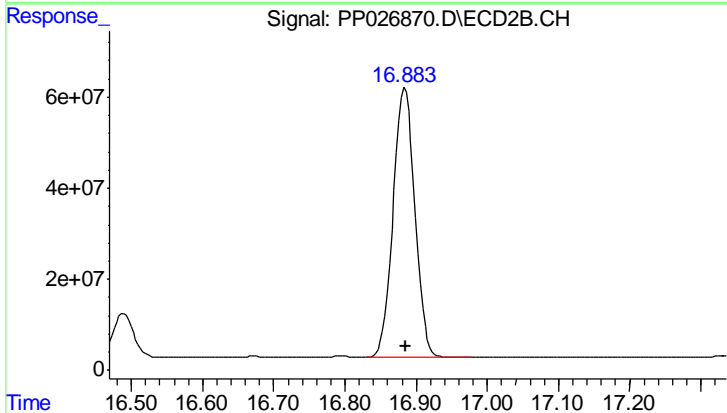
Manual Integrations
 APPROVED
 Sohil
 7/27/2018 3:37:54 PM



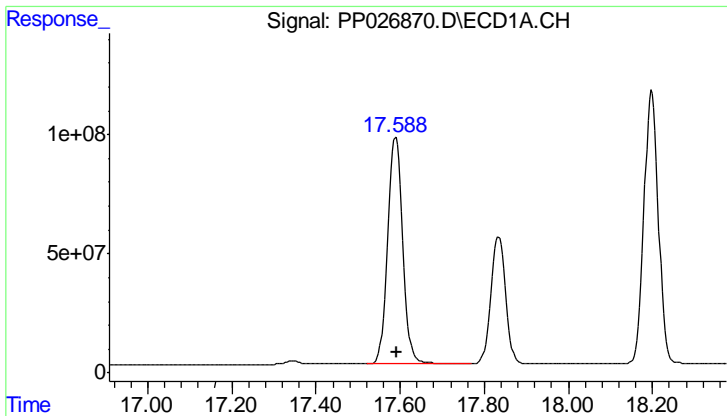
#13 2,4-DB
 R.T.: 16.489 min
 Delta R.T.: -0.003 min
 Response: 199035328
 Conc: 688.58 ng/ml



#14 DINOSEB
 R.T.: 17.835 min
 Delta R.T.: -0.002 min
 Response: 1295975755
 Conc: 705.24 ng/ml



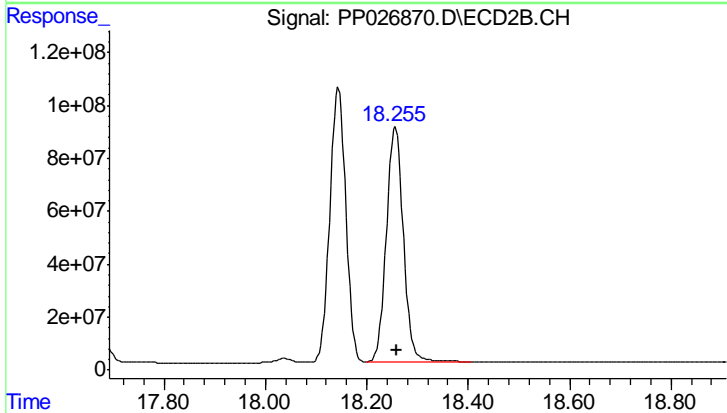
#14 DINOSEB
 R.T.: 16.884 min
 Delta R.T.: -0.002 min
 Response: 1257513970
 Conc: 704.81 ng/ml



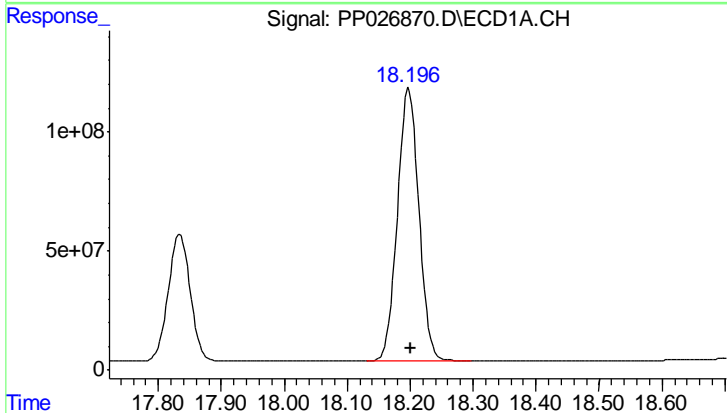
#15 Picloram
 R.T.: 17.590 min
 Delta R.T.: -0.001 min
 Response: 2370940338
 Conc: 621.92 ng/ml

Instrument :
 ECD_P
 ClientSampled :
 HSTDCCC750

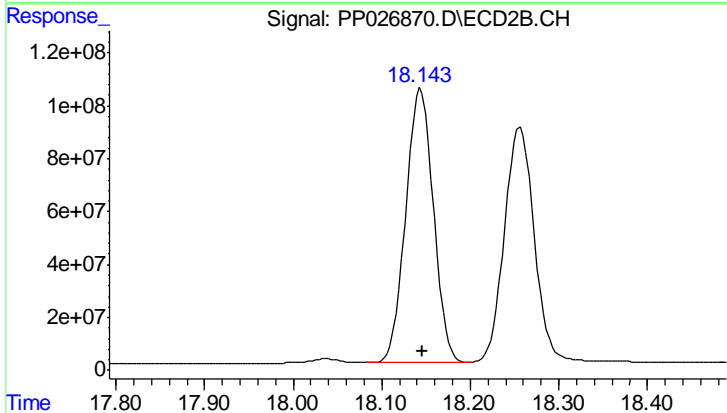
Manual Integrations
 APPROVED
 Sohil
 7/27/2018 3:37:54 PM



#15 Picloram
 R.T.: 18.256 min
 Delta R.T.: -0.002 min
 Response: 2085236407
 Conc: 574.06 ng/ml



#16 DCPA
 R.T.: 18.198 min
 Delta R.T.: -0.002 min
 Response: 2714251254
 Conc: 742.10 ng/ml



#16 DCPA
 R.T.: 18.144 min
 Delta R.T.: -0.001 min
 Response: 2257624064
 Conc: 703.21 ng/ml