

Data Path : Z:\pestpcbsrv\HPCHEM1\ECD_P\Data\PP072618\
 Data File : PP026873.D
 Signal(s) : Signal #1: ECD1A.CH Signal #2: ECD2B.CH
 Acq On : 26 Jul 2018 18:03
 Operator : EI\MA
 Sample : PB111497TB
 Misc :
 ALS Vial : 13 Sample Multiplier: 1

Instrument :
 ECD_P
ClientSampleId :
 PB111497TB

Manual Integrations
APPROVED
 Sohil
 7/27/2018 3:37:58 PM

Integration File signal 1: autoint1.e
 Integration File signal 2: autoint2.e
 Quant Time: Jul 27 08:23:27 2018
 Quant Method : Z:\pestpcbsrv\HPCHEM1\ECD_P\methods\PP071318.M
 Quant Title : 8080.M
 QLast Update : Fri Jul 13 23:16:25 2018
 Response via : Initial Calibration
 Integrator: ChemStation 6890 Scale Mode: Large solvent peaks clipped

Volume Inj. : 2 µl
 Signal #1 Phase : ZB-CLPesticides-1 Signal #2 Phase: ZB-CLPesticides-2
 Signal #1 Info : 30M x 0.32mm x0.5 Signal #2 Info : 30M x 0.32mm x 0.25µm

Compound	RT#1	RT#2	Resp#1	Resp#2	ng/ml	ng/ml

System Monitoring Compounds						
4) S 2,4-DCAA	12.044	12.156	55384988	78880669	248.193m	197.436

Target Compounds

(f)=RT Delta > 1/2 Window (#)=Amounts differ by > 25% (m)=manual int.

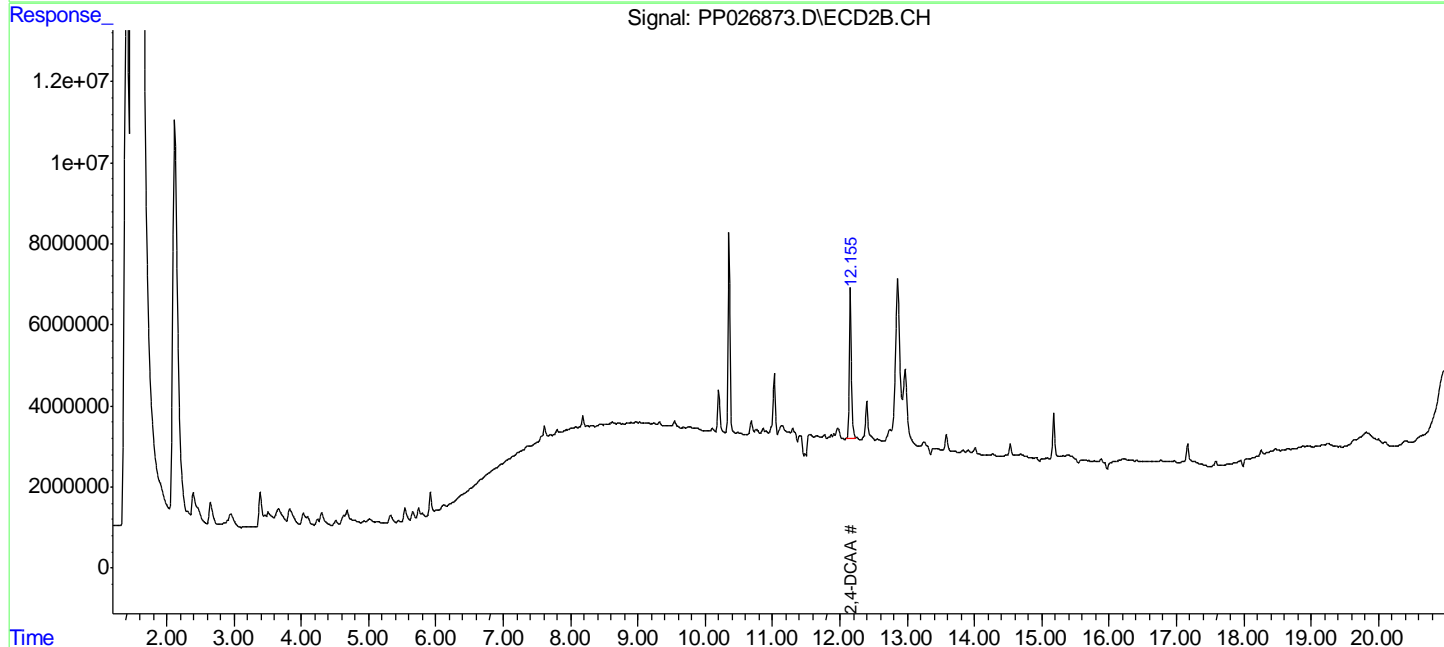
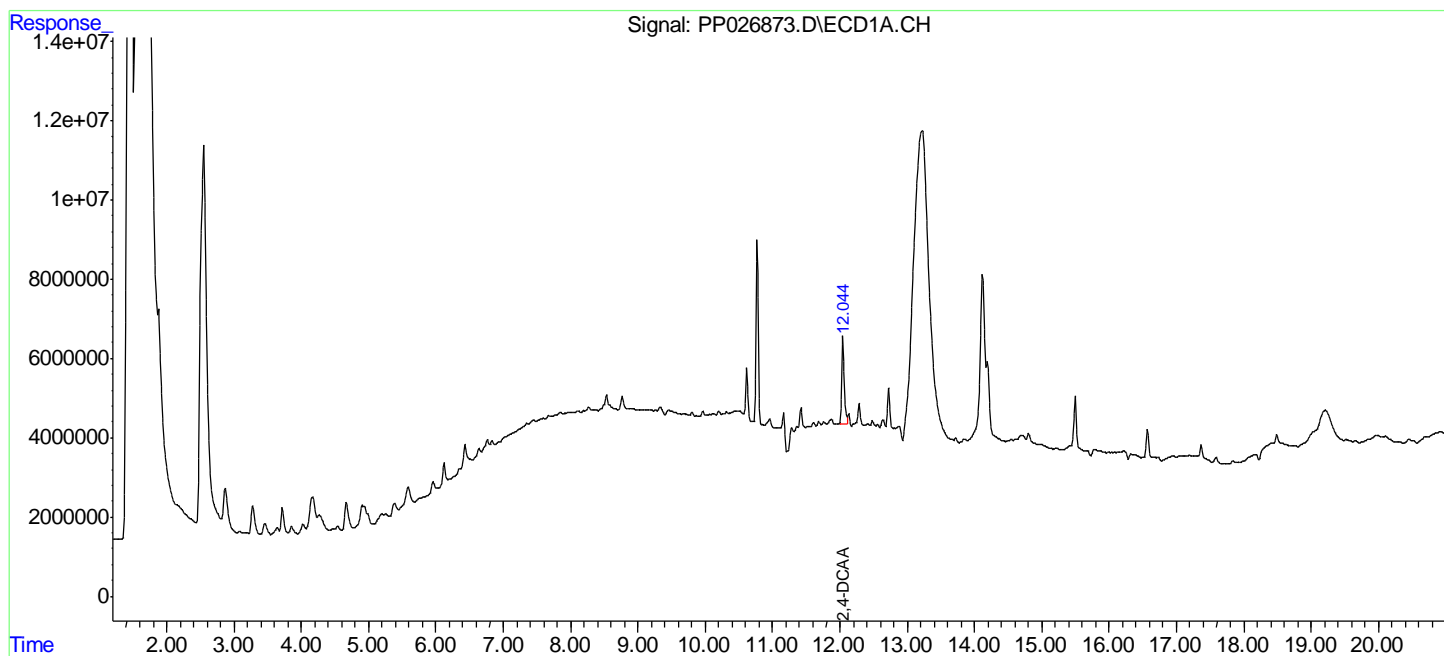
Data Path : Z:\pestpcbsrv\HPCHEM1\ECD_P\Data\PP072618\
 Data File : PP026873.D
 Signal(s) : Signal #1: ECD1A.CH Signal #2: ECD2B.CH
 Acq On : 26 Jul 2018 18:03
 Operator : EI\MA
 Sample : PB111497TB
 Misc :
 ALS Vial : 13 Sample Multiplier: 1

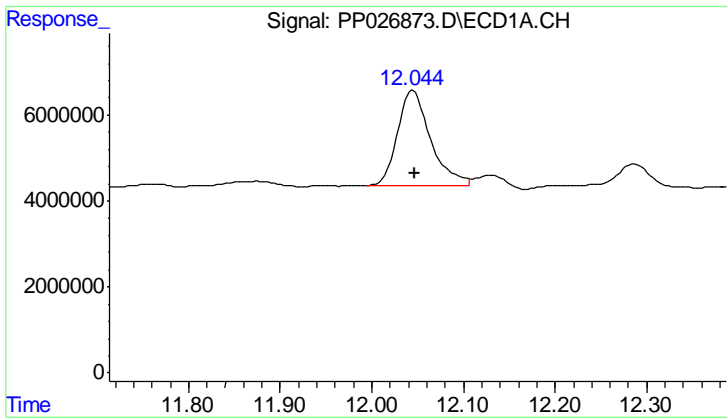
Instrument :
 ECD_P
 ClientSampled :
 PB111497TB

Manual Integrations
APPROVED
 Sohil
 7/27/2018 3:37:58 PM

Integration File signal 1: autoint1.e
 Integration File signal 2: autoint2.e
 Quant Time: Jul 27 08:23:27 2018
 Quant Method : Z:\pestpcbsrv\HPCHEM1\ECD_P\methods\PP071318.M
 Quant Title : 8080.M
 QLast Update : Fri Jul 13 23:16:25 2018
 Response via : Initial Calibration
 Integrator: ChemStation 6890 Scale Mode: Large solvent peaks clipped

Volume Inj. : 2 µl
 Signal #1 Phase : ZB-CLPesticides-1 Signal #2 Phase: ZB-CLPesticides-2
 Signal #1 Info : 30M x 0.32mm x0.5 Signal #2 Info : 30M x 0.32mm x 0.25µm





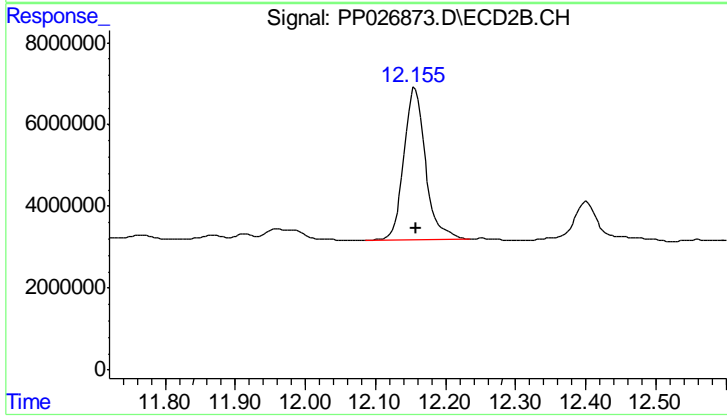
#4 2,4-DCAA

R.T.: 12.044 min
Delta R.T.: -0.003 min
Response: 55384988
Conc: 248.19 ng/ml

Instrument :
ECD_P
ClientSampled :
PB111497TB

Manual Integrations
APPROVED

Sohil
7/27/2018 3:37:58 PM



#4 2,4-DCAA

R.T.: 12.156 min
Delta R.T.: -0.002 min
Response: 78880669
Conc: 197.44 ng/ml