

Data Path : Z:\pestpcbsrv\HPCHEM1\ECD_P\Data\PP072622\
 Data File : PP049825.D
 Signal(s) : Signal #1: ECD1A.ch Signal #2: ECD2B.ch
 Acq On : 26 Jul 2022 10:03
 Operator : YP\AJ
 Sample : N3822-11DL 2X
 Misc :
 ALS Vial : 7 Sample Multiplier: 1

Instrument :
 ECD_P
ClientSampleId :
 SITE-1-SS01-20220720DL

Manual Integrations
APPROVED

Reviewed By :Yogesh Patel 08/04/2022
 Supervised By :Ankita Jodhani 08/04/2022

Integration File signal 1: autoint1.e
 Integration File signal 2: autoint2.e
 Quant Time: Jul 27 00:09:49 2022
 Quant Method : Z:\pestpcbsrv\HPCHEM1\ECD_P\methods\PP071422.M
 Quant Title : GC EXTRACTABLES
 QLast Update : Thu Jul 14 06:08:44 2022
 Response via : Initial Calibration
 Integrator: ChemStation

Volume Inj. : 2 µl
 Signal #1 Phase : ZB-MR1 Signal #2 Phase: ZB-MR2
 Signal #1 Info : 30Mx0.32mmx 0.50µ Signal #2 Info : 30M x 0.32mm x 0.25µm

Compound	RT#1	RT#2	Resp#1	Resp#2	ng/ml	ng/ml

System Monitoring Compounds						
1) SA Tetrachlo...	4.349	3.599	17588806	27886462	12.121	11.409
2) SA Decachlor...	10.098	8.564	16197657	13253832	11.452m	11.381
Target Compounds						
21) L5 AR-1248-1	5.525	4.671	30793106	38670837	874.171m	687.725
22) L5 AR-1248-2	5.798	4.905	38750036	53234994	781.908m	715.252
23) L5 AR-1248-3	6.005	4.946	55859940	61149343	1008.610	800.830
24) L5 AR-1248-4	6.411	5.117	62779368	65723053	1012.772	723.818m#
25) L5 AR-1248-5	6.450	5.507	67671326	74041761	1149.523	888.371

(f)=RT Delta > 1/2 Window (#)=Amounts differ by > 25% (m)=manual int.

Data Path : Z:\pestpcbsrv\HPCHEM1\ECD_P\Data\PP072622\
 Data File : PP049825.D
 Signal(s) : Signal #1: ECD1A.ch Signal #2: ECD2B.ch
 Acq On : 26 Jul 2022 10:03
 Operator : YP\AJ
 Sample : N3822-11DL 2X
 Misc :
 ALS Vial : 7 Sample Multiplier: 1

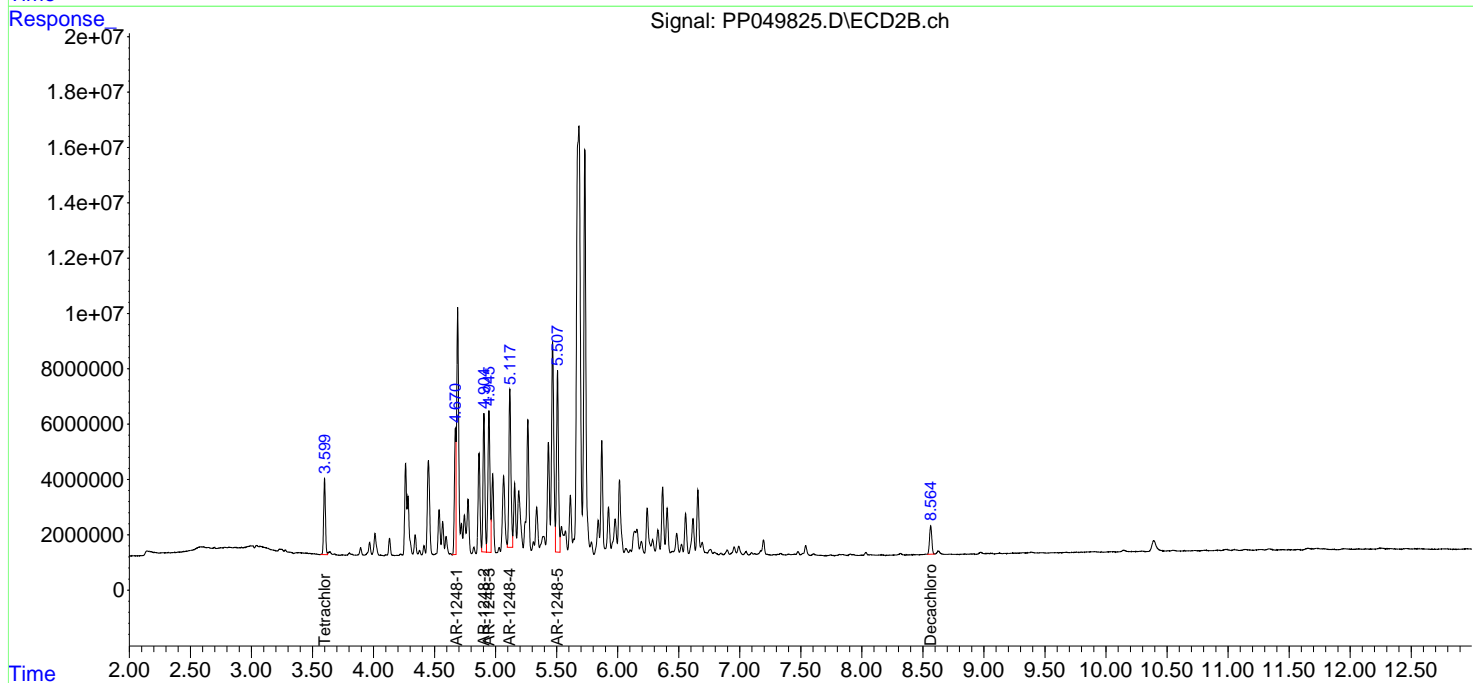
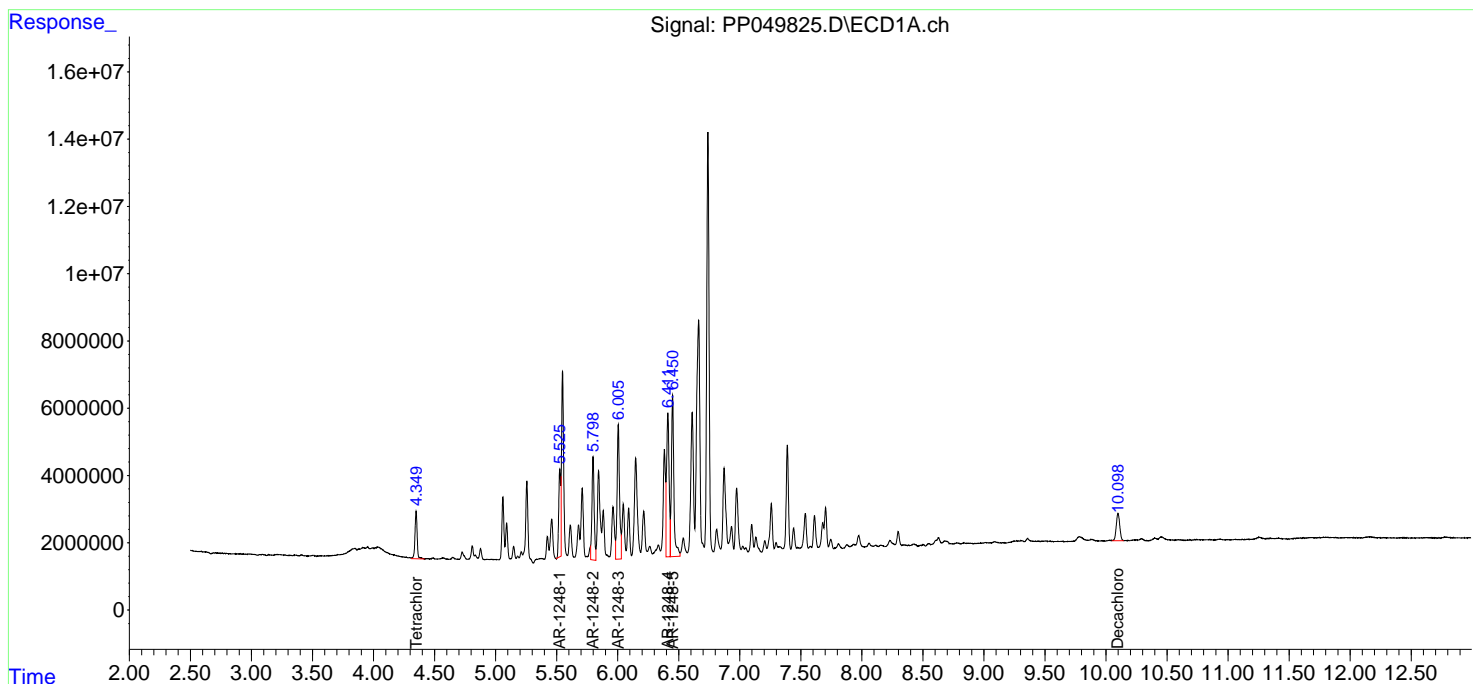
Instrument :
 ECD_P
 ClientSampleId :
 SITE-1-SS01-20220720DL

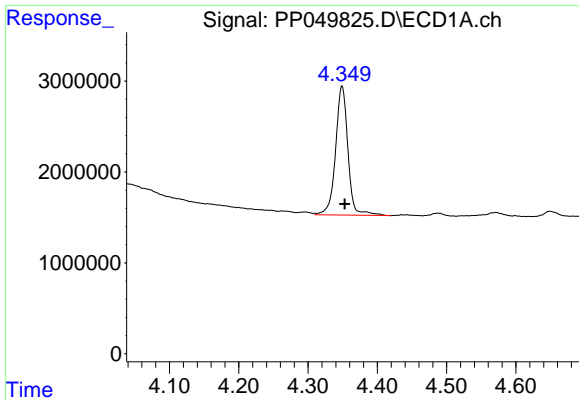
Manual Integrations
 APPROVED

Reviewed By :Yogesh Patel 08/04/2022
 Supervised By :Ankita Jodhani 08/04/2022

Integration File signal 1: autoint1.e
 Integration File signal 2: autoint2.e
 Quant Time: Jul 27 00:09:49 2022
 Quant Method : Z:\pestpcbsrv\HPCHEM1\ECD_P\methods\PP071422.M
 Quant Title : GC EXTRACTABLES
 QLast Update : Thu Jul 14 06:08:44 2022
 Response via : Initial Calibration
 Integrator: ChemStation

Volume Inj. : 2 µl
 Signal #1 Phase : ZB-MR1 Signal #2 Phase: ZB-MR2
 Signal #1 Info : 30Mx0.32mmx 0.50µ Signal #2 Info : 30M x 0.32mm x 0.25µm



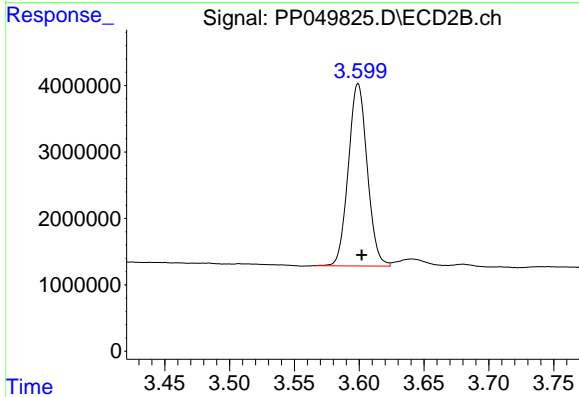


#1 Tetrachloro-m-xylene
 R.T.: 4.349 min
 Delta R.T.: -0.004 min
 Response: 17588806
 Conc: 12.12 ng/ml

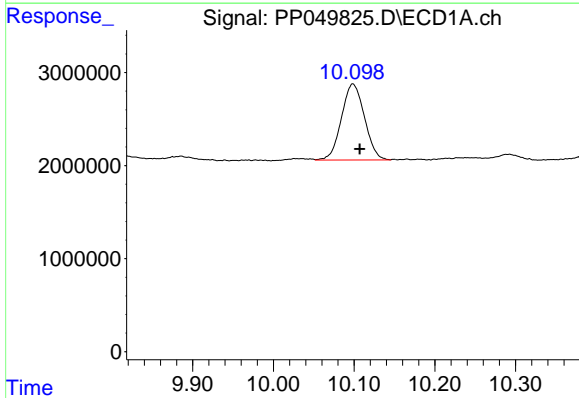
Instrument :
 ECD_P
 Client Sample Id :
 SITE-1-SS01-20220720DL

Manual Integrations
 APPROVED

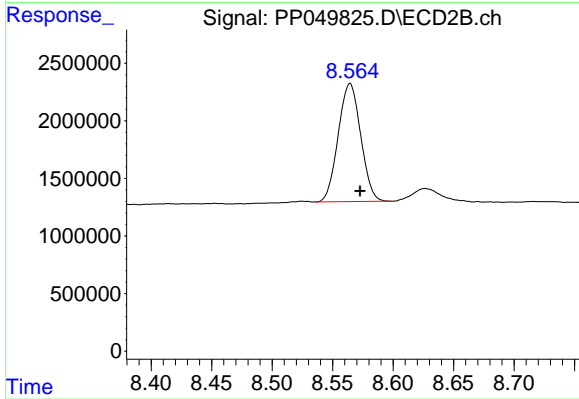
Reviewed By :Yogesh Patel 08/04/2022
 Supervised By :Ankita Jodhani 08/04/2022



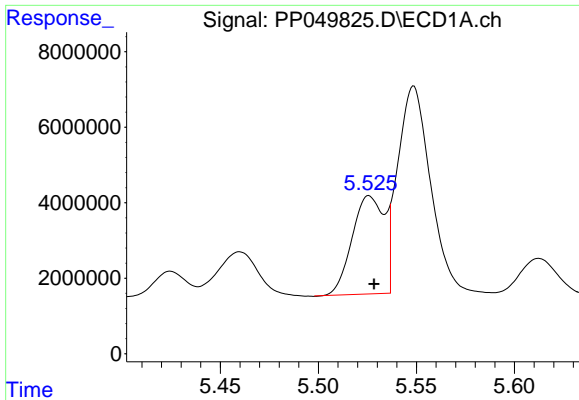
#1 Tetrachloro-m-xylene
 R.T.: 3.599 min
 Delta R.T.: -0.003 min
 Response: 27886462
 Conc: 11.41 ng/ml



#2 Decachlorobiphenyl
 R.T.: 10.098 min
 Delta R.T.: -0.009 min
 Response: 16197657
 Conc: 11.45 ng/ml m



#2 Decachlorobiphenyl
 R.T.: 8.564 min
 Delta R.T.: -0.008 min
 Response: 13253832
 Conc: 11.38 ng/ml



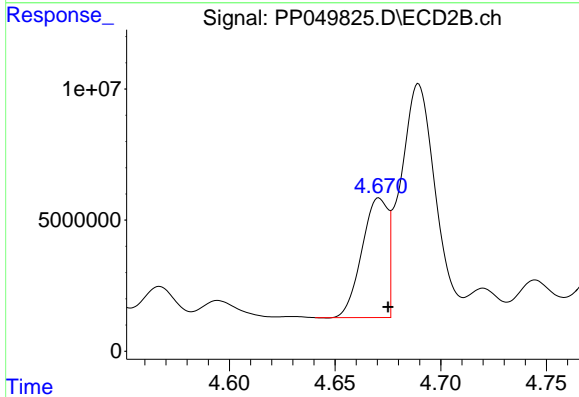
#21 AR-1248-1

R.T.: 5.525 min
 Delta R.T.: -0.003 min
 Response: 30793106
 Conc: 874.17 ng/ml

Instrument : ECD_P
 ClientSampleId : SITE-1-SS01-20220720DL

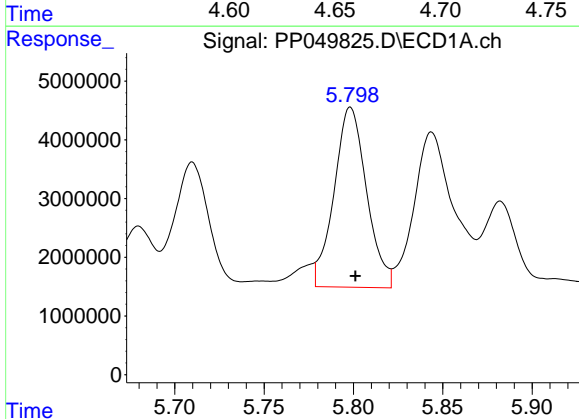
Manual Integrations
 APPROVED

Reviewed By :Yogesh Patel 08/04/2022
 Supervised By :Ankita Jodhani 08/04/2022



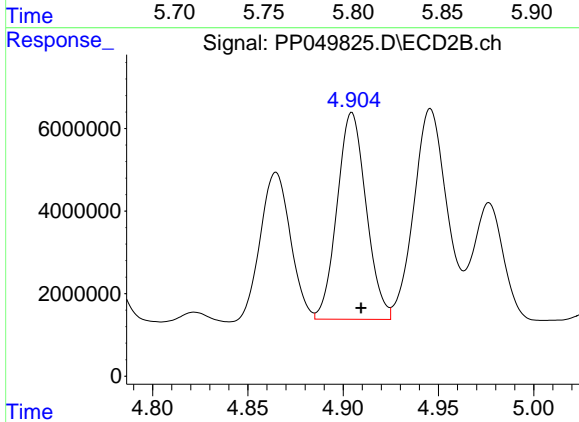
#21 AR-1248-1

R.T.: 4.671 min
 Delta R.T.: -0.004 min
 Response: 38670837
 Conc: 687.73 ng/ml



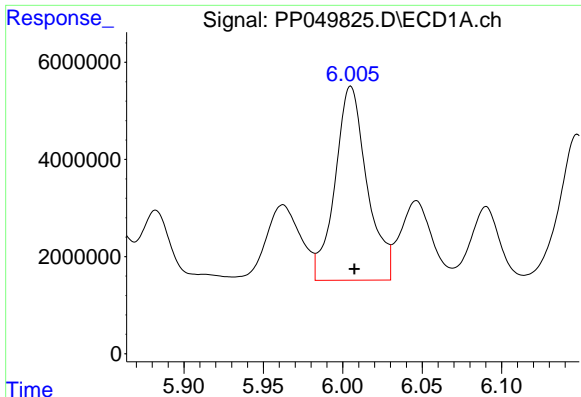
#22 AR-1248-2

R.T.: 5.798 min
 Delta R.T.: -0.003 min
 Response: 38750036
 Conc: 781.91 ng/ml m



#22 AR-1248-2

R.T.: 4.905 min
 Delta R.T.: -0.005 min
 Response: 53234994
 Conc: 715.25 ng/ml



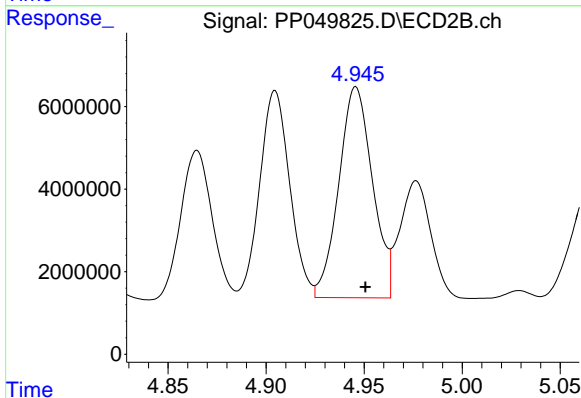
#23 AR-1248-3

R.T.: 6.005 min
 Delta R.T.: -0.002 min
 Response: 55859940
 Conc: 1008.61 ng/m

Instrument :
 ECD_P
 ClientSampleId :
 SITE-1-SS01-20220720DL

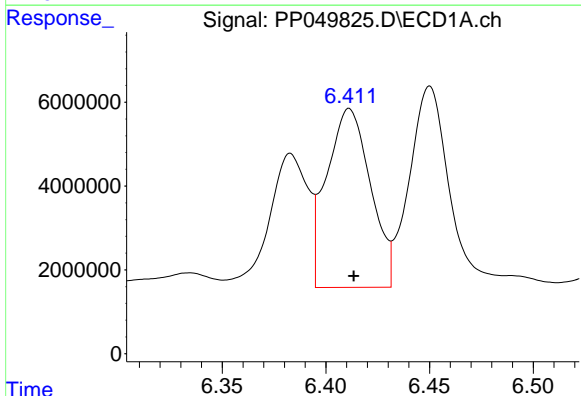
Manual Integrations
 APPROVED

Reviewed By :Yogesh Patel 08/04/2022
 Supervised By :Ankita Jodhani 08/04/2022



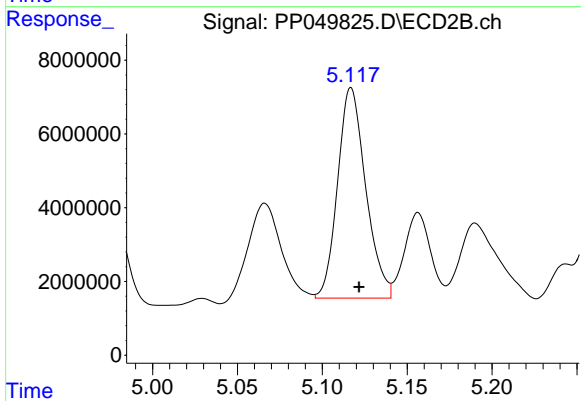
#23 AR-1248-3

R.T.: 4.946 min
 Delta R.T.: -0.005 min
 Response: 61149343
 Conc: 800.83 ng/ml



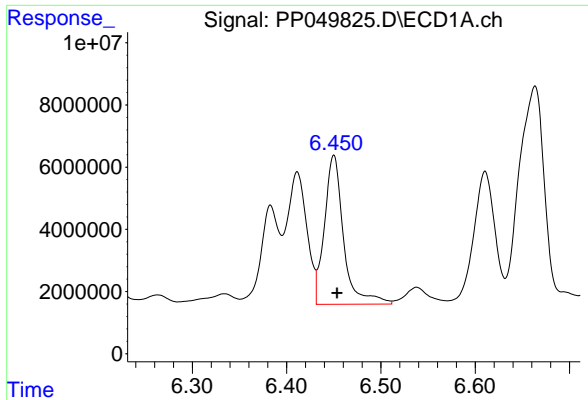
#24 AR-1248-4

R.T.: 6.411 min
 Delta R.T.: -0.002 min
 Response: 62779368
 Conc: 1012.77 ng/ml



#24 AR-1248-4

R.T.: 5.117 min
 Delta R.T.: -0.005 min
 Response: 65723053
 Conc: 723.82 ng/ml m



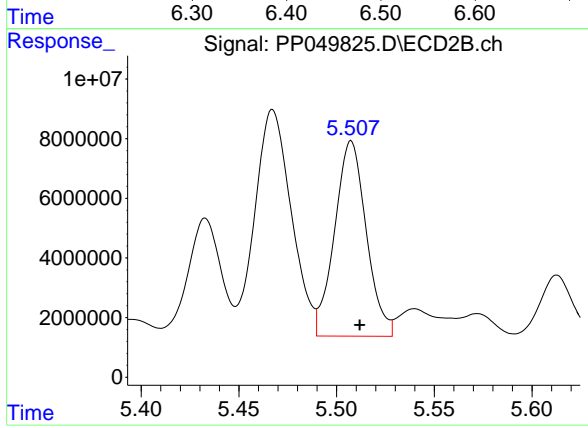
#25 AR-1248-5

R.T.: 6.450 min
 Delta R.T.: -0.003 min
 Response: 67671326
 Conc: 1149.52 ng/ml

Instrument :
 ECD_P
 ClientSampleId :
 SITE-1-SS01-20220720DL

Manual Integrations
 APPROVED

Reviewed By :Yogesh Patel 08/04/2022
 Supervised By :Ankita Jodhani 08/04/2022



#25 AR-1248-5

R.T.: 5.507 min
 Delta R.T.: -0.004 min
 Response: 74041761
 Conc: 888.37 ng/ml