

Data Path : Z:\pestpcbsrv\HPCHEM1\ECD_P\Data\PP072722\
 Data File : PP049913.D
 Signal(s) : Signal #1: ECD1A.ch Signal #2: ECD2B.ch
 Acq On : 28 Jul 2022 05:48
 Operator : YP\AJ
 Sample : AR1254CCC500
 Misc :
 ALS Vial : 6 Sample Multiplier: 1

Instrument :
 ECD_P
 ClientSampleId :
 AR1254CCC500

Integration File signal 1: autoint1.e
 Integration File signal 2: autoint2.e
 Quant Time: Jul 28 06:16:40 2022
 Quant Method : Z:\pestpcbsrv\HPCHEM1\ECD_P\methods\PP071422.M
 Quant Title : GC EXTRACTABLES
 QLast Update : Thu Jul 14 06:08:44 2022
 Response via : Initial Calibration
 Integrator: ChemStation

Volume Inj. : 2 µl
 Signal #1 Phase : ZB-MR1 Signal #2 Phase: ZB-MR2
 Signal #1 Info : 30Mx0.32mmx 0.50µ Signal #2 Info : 30M x 0.32mm x 0.25µm

Compound	RT#1	RT#2	Resp#1	Resp#2	ng/ml	ng/ml

System Monitoring Compounds						
1) SA Tetrachlo...	4.349	3.598	76771584	146.5E6	52.904	59.919
2) SA Decachlor...	10.097	8.561	71720702	60675928	50.707	52.100
Target Compounds						
26) L6 AR-1254-1	6.382	5.464	34363018	62330103	545.607	491.443
27) L6 AR-1254-2	6.600	5.611	47595157	53115033	488.544	480.544
28) L6 AR-1254-3	6.971	6.013	48698353	75670909	471.321	464.882
29) L6 AR-1254-4	7.258	6.240	41118800	45020962	513.638	465.299
30) L6 AR-1254-5	7.678	6.656	41723345	61413317	469.424	463.442

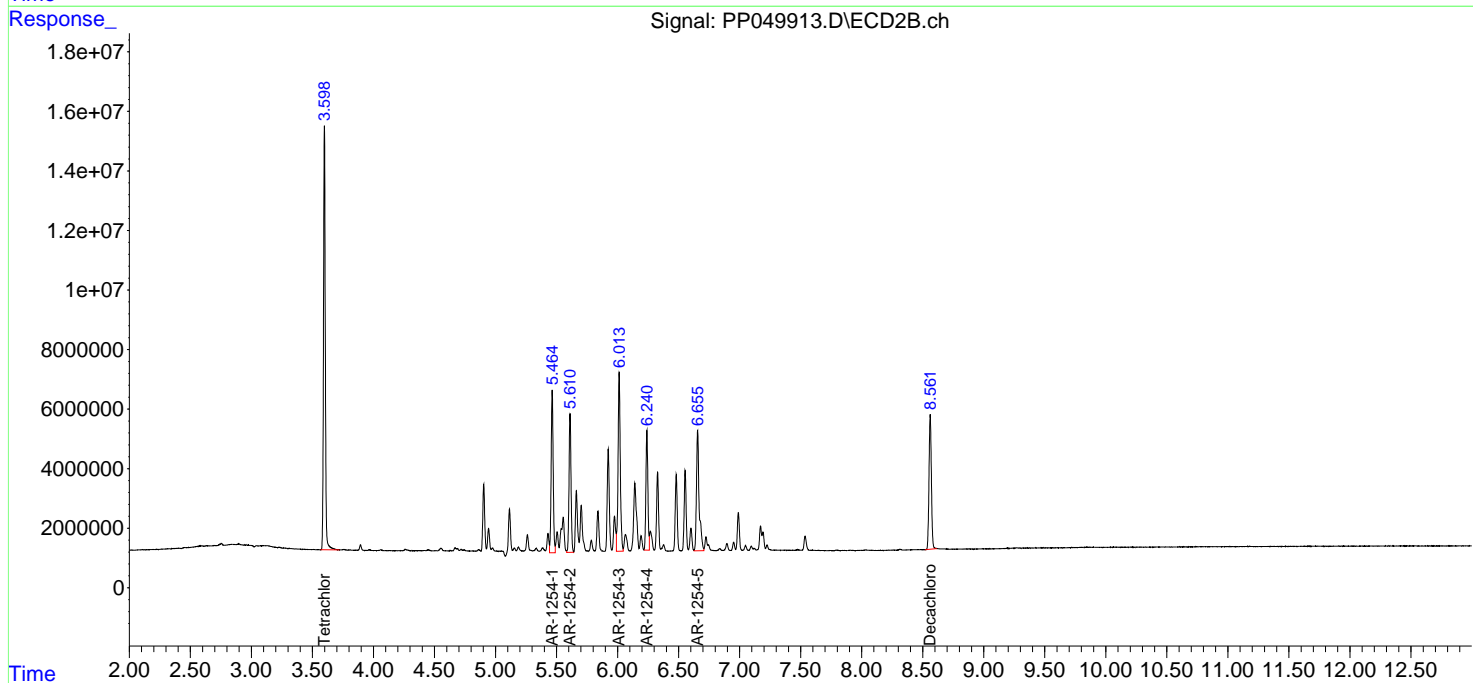
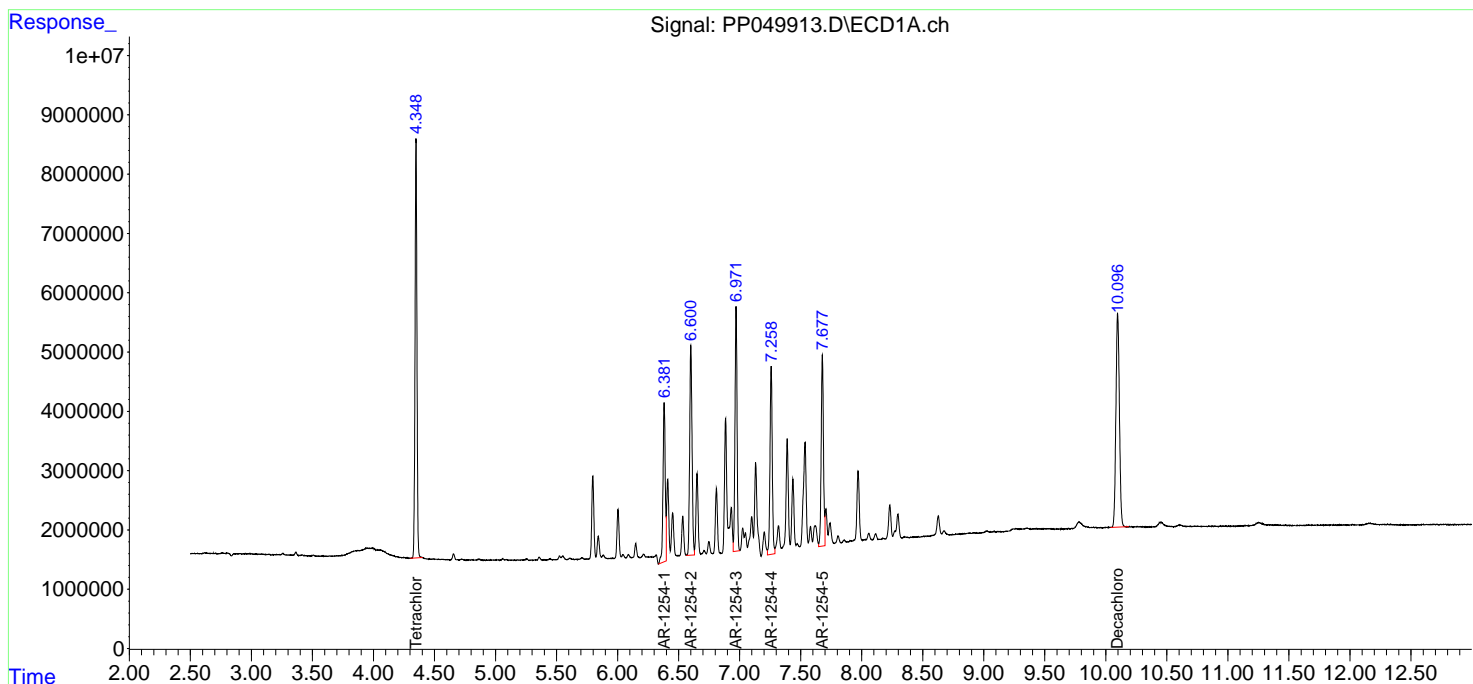
(f)=RT Delta > 1/2 Window (#)=Amounts differ by > 25% (m)=manual int.

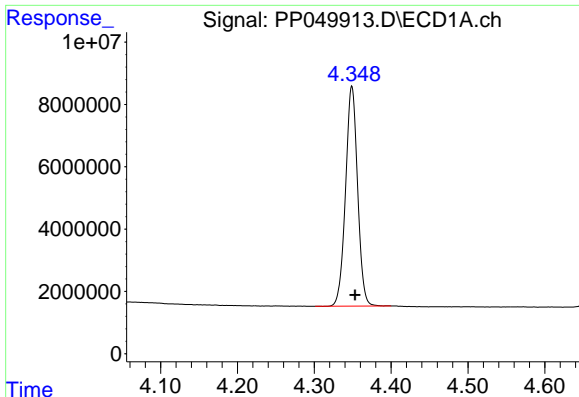
Data Path : Z:\pestpcbsrv\HPCHEM1\ECD_P\Data\PP072722\
 Data File : PP049913.D
 Signal(s) : Signal #1: ECD1A.ch Signal #2: ECD2B.ch
 Acq On : 28 Jul 2022 05:48
 Operator : YP\AJ
 Sample : AR1254CCC500
 Misc :
 ALS Vial : 6 Sample Multiplier: 1

Instrument :
 ECD_P
 ClientSampleId :
 AR1254CCC500

Integration File signal 1: autoint1.e
 Integration File signal 2: autoint2.e
 Quant Time: Jul 28 06:16:40 2022
 Quant Method : Z:\pestpcbsrv\HPCHEM1\ECD_P\methods\PP071422.M
 Quant Title : GC EXTRACTABLES
 QLast Update : Thu Jul 14 06:08:44 2022
 Response via : Initial Calibration
 Integrator: ChemStation

Volume Inj. : 2 µl
 Signal #1 Phase : ZB-MR1 Signal #2 Phase: ZB-MR2
 Signal #1 Info : 30Mx0.32mmx 0.50µ Signal #2 Info : 30M x 0.32mm x 0.25µm

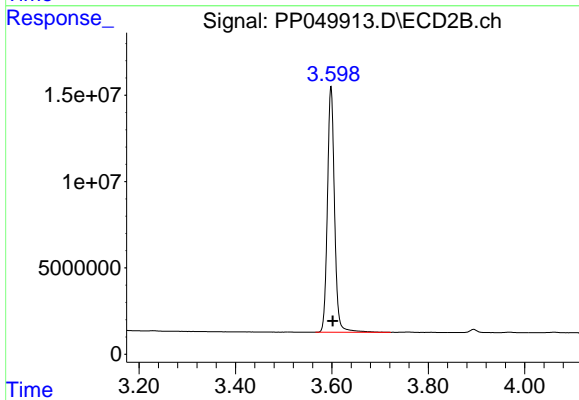




#1 Tetrachloro-m-xylene

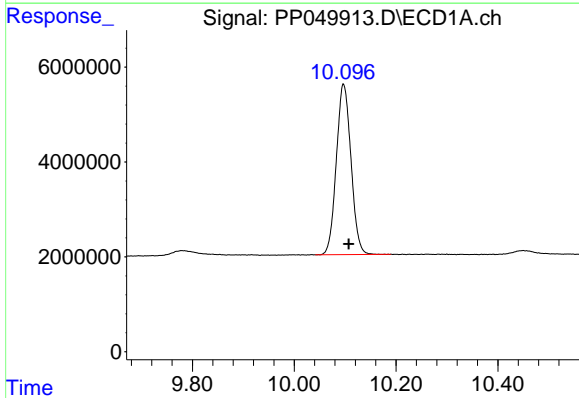
R.T.: 4.349 min
 Delta R.T.: -0.004 min
 Response: 76771584
 Conc: 52.90 ng/ml

Instrument :
 ECD_P
 ClientSampleId :
 AR1254CCC500



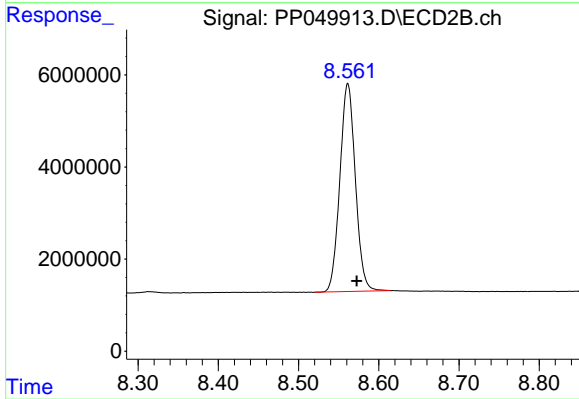
#1 Tetrachloro-m-xylene

R.T.: 3.598 min
 Delta R.T.: -0.004 min
 Response: 146461320
 Conc: 59.92 ng/ml



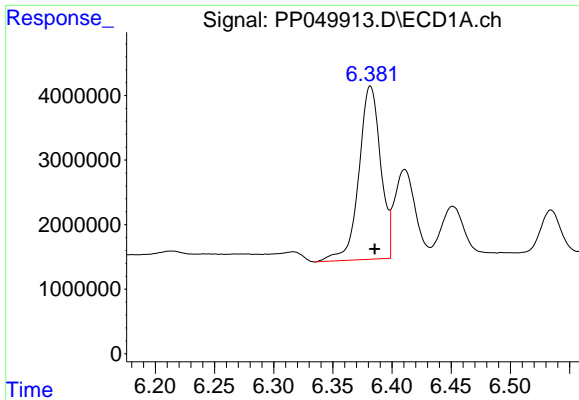
#2 Decachlorobiphenyl

R.T.: 10.097 min
 Delta R.T.: -0.010 min
 Response: 71720702
 Conc: 50.71 ng/ml



#2 Decachlorobiphenyl

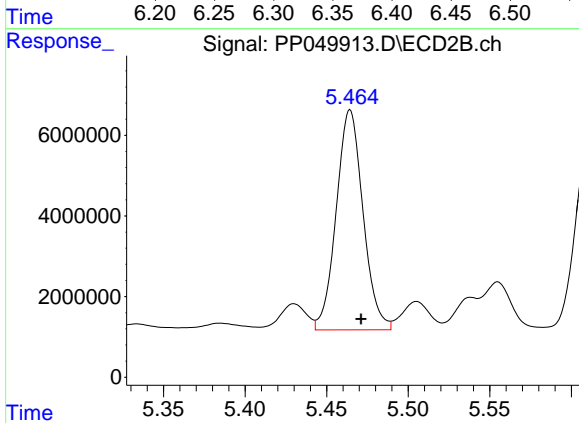
R.T.: 8.561 min
 Delta R.T.: -0.011 min
 Response: 60675928
 Conc: 52.10 ng/ml



#26 AR-1254-1

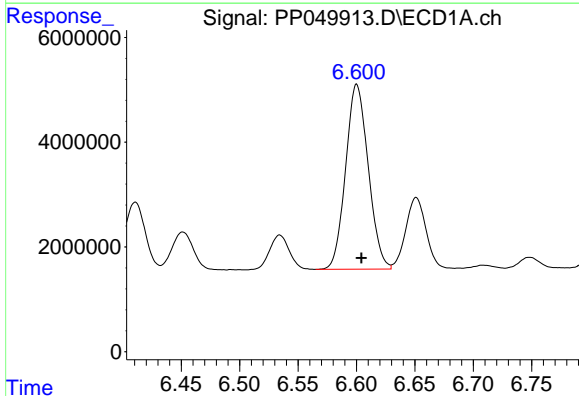
R.T.: 6.382 min
 Delta R.T.: -0.004 min
 Response: 34363018
 Conc: 545.61 ng/ml

Instrument :
 ECD_P
 ClientSampleId :
 AR1254CCC500



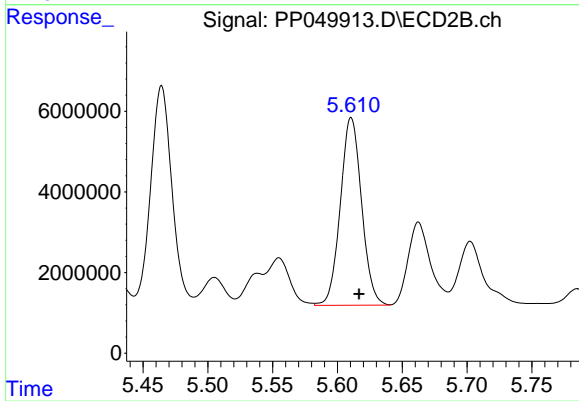
#26 AR-1254-1

R.T.: 5.464 min
 Delta R.T.: -0.007 min
 Response: 62330103
 Conc: 491.44 ng/ml



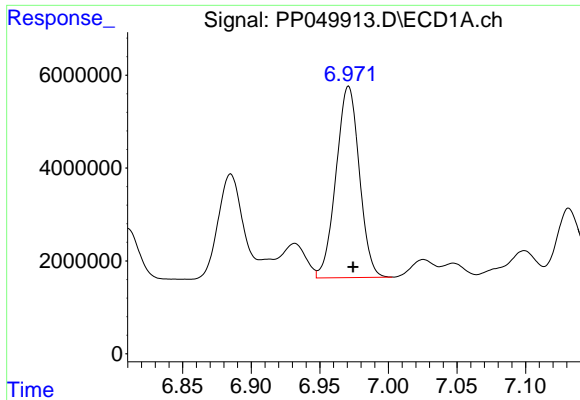
#27 AR-1254-2

R.T.: 6.600 min
 Delta R.T.: -0.004 min
 Response: 47595157
 Conc: 488.54 ng/ml



#27 AR-1254-2

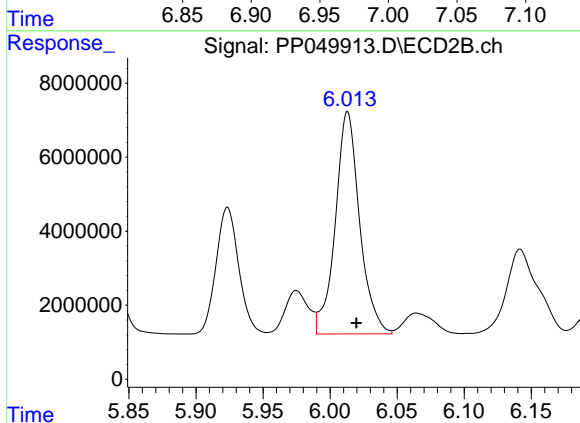
R.T.: 5.611 min
 Delta R.T.: -0.006 min
 Response: 53115033
 Conc: 480.54 ng/ml



#28 AR-1254-3

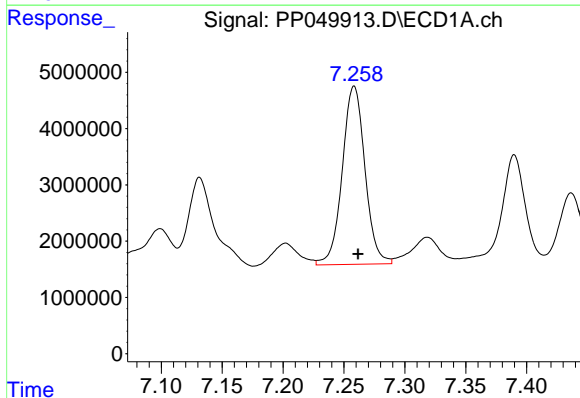
R.T.: 6.971 min
 Delta R.T.: -0.003 min
 Response: 48698353
 Conc: 471.32 ng/ml

Instrument :
 ECD_P
 ClientSampleId :
 AR1254CCC500



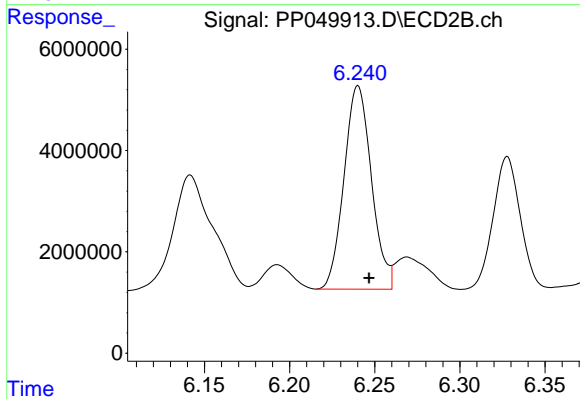
#28 AR-1254-3

R.T.: 6.013 min
 Delta R.T.: -0.007 min
 Response: 75670909
 Conc: 464.88 ng/ml



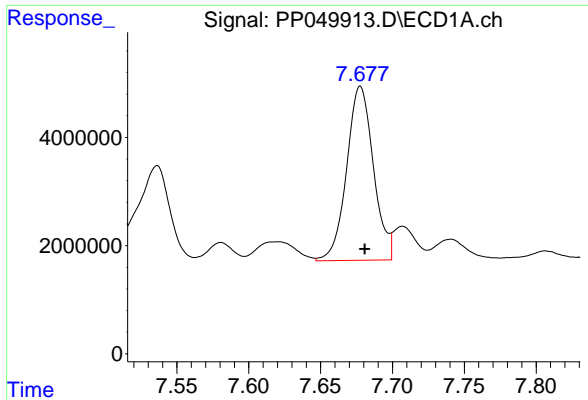
#29 AR-1254-4

R.T.: 7.258 min
 Delta R.T.: -0.003 min
 Response: 41118800
 Conc: 513.64 ng/ml



#29 AR-1254-4

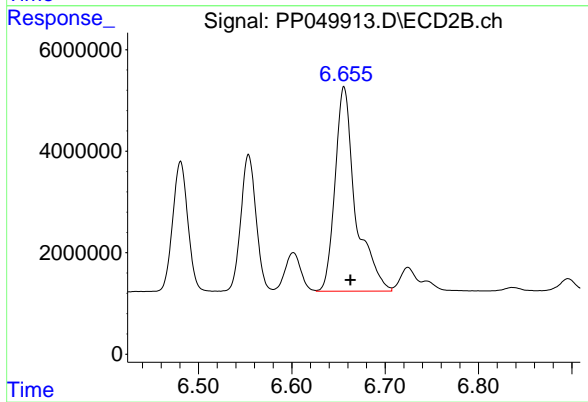
R.T.: 6.240 min
 Delta R.T.: -0.007 min
 Response: 45020962
 Conc: 465.30 ng/ml



#30 AR-1254-5

R.T.: 7.678 min
Delta R.T.: -0.003 min
Response: 41723345
Conc: 469.42 ng/ml

Instrument :
ECD_P
ClientSampleId :
AR1254CCC500



#30 AR-1254-5

R.T.: 6.656 min
Delta R.T.: -0.007 min
Response: 61413317
Conc: 463.44 ng/ml