

Data Path : Z:\pestpcbsrv\HPCHEM1\ECD_P\Data\PP072825\
 Data File : PP074075.D
 Signal(s) : Signal #1: ECD1A.ch Signal #2: ECD2B.ch
 Acq On : 28 Jul 2025 14:22
 Operator : YP\AJ
 Sample : AR1242ICC1000
 Misc :
 ALS Vial : 3 Sample Multiplier: 1

Instrument :
 ECD_P
 ClientSampleId :
 AR1242ICC1000

Integration File signal 1: autoint1.e
 Integration File signal 2: autoint2.e
 Quant Time: Jul 28 15:22:45 2025
 Quant Method : Z:\pestpcbsrv\HPCHEM1\ECD_P\methods\PP072525.M
 Quant Title : GC EXTRACTABLES
 QLast Update : Mon Jul 28 15:19:19 2025
 Response via : Initial Calibration
 Integrator: ChemStation

Volume Inj. : 2 µl
 Signal #1 Phase : ZB-MR1 Signal #2 Phase: ZB-MR2
 Signal #1 Info : 30Mx0.32mmx 0.50µ Signal #2 Info : 30M x 0.32mm x 0.25µm

Compound	RT#1	RT#2	Resp#1	Resp#2	ng/ml	ng/ml

System Monitoring Compounds						
1) SA Tetrachlo...	4.709	3.888	102.6E6	1066.7E6	95.138	99.630
2) SA Decachlor...	10.587	9.009	74999341	1255.7E6	96.772	98.455
Target Compounds						
16) L4 AR-1242-1	5.869	5.010	30159599	785.1E6	938.577	980.172
17) L4 AR-1242-2	5.891	5.067	43966180	344.9E6	937.039	981.995
18) L4 AR-1242-3	5.954	5.190	27626649	190.4E6	931.405	969.729
19) L4 AR-1242-4	6.052	5.274	22543330	323.3E6	933.011	1306.063 #
20) L4 AR-1242-5	6.785	5.802	25858203	283.0E6	905.550	974.057

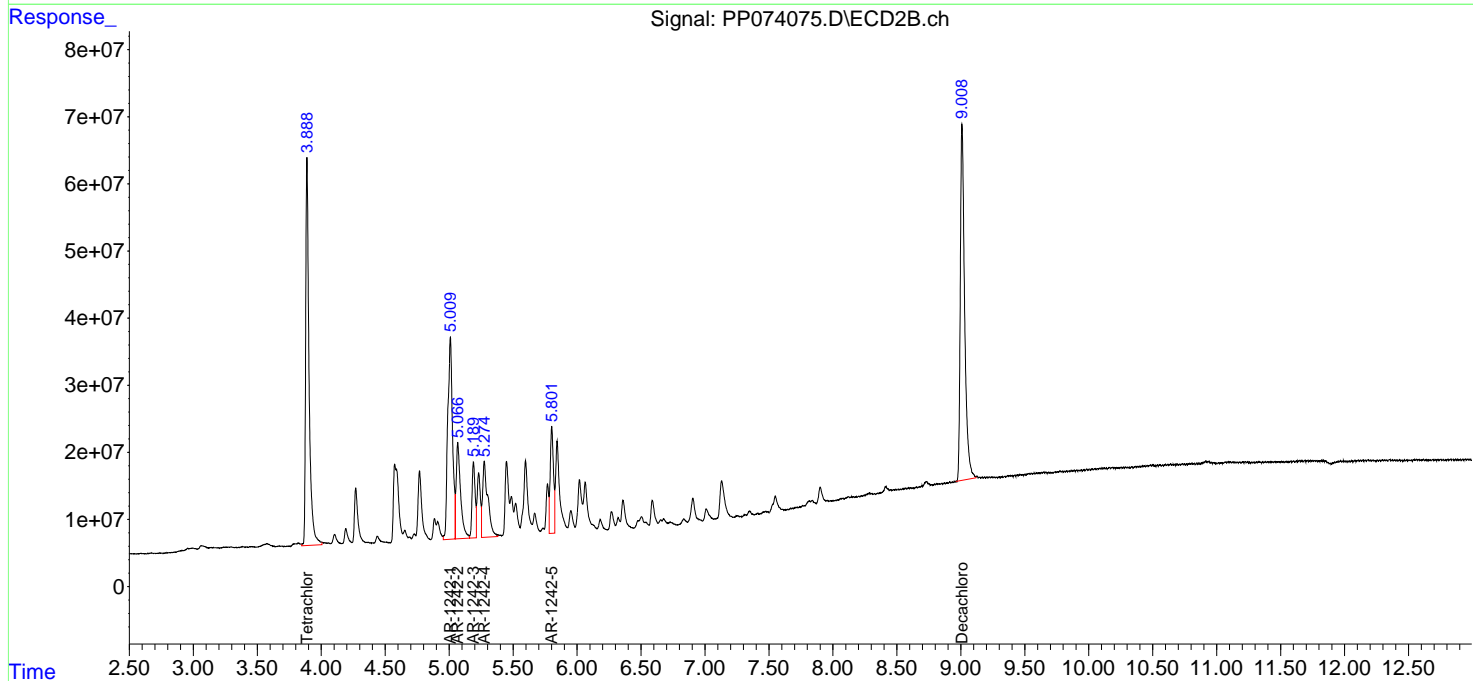
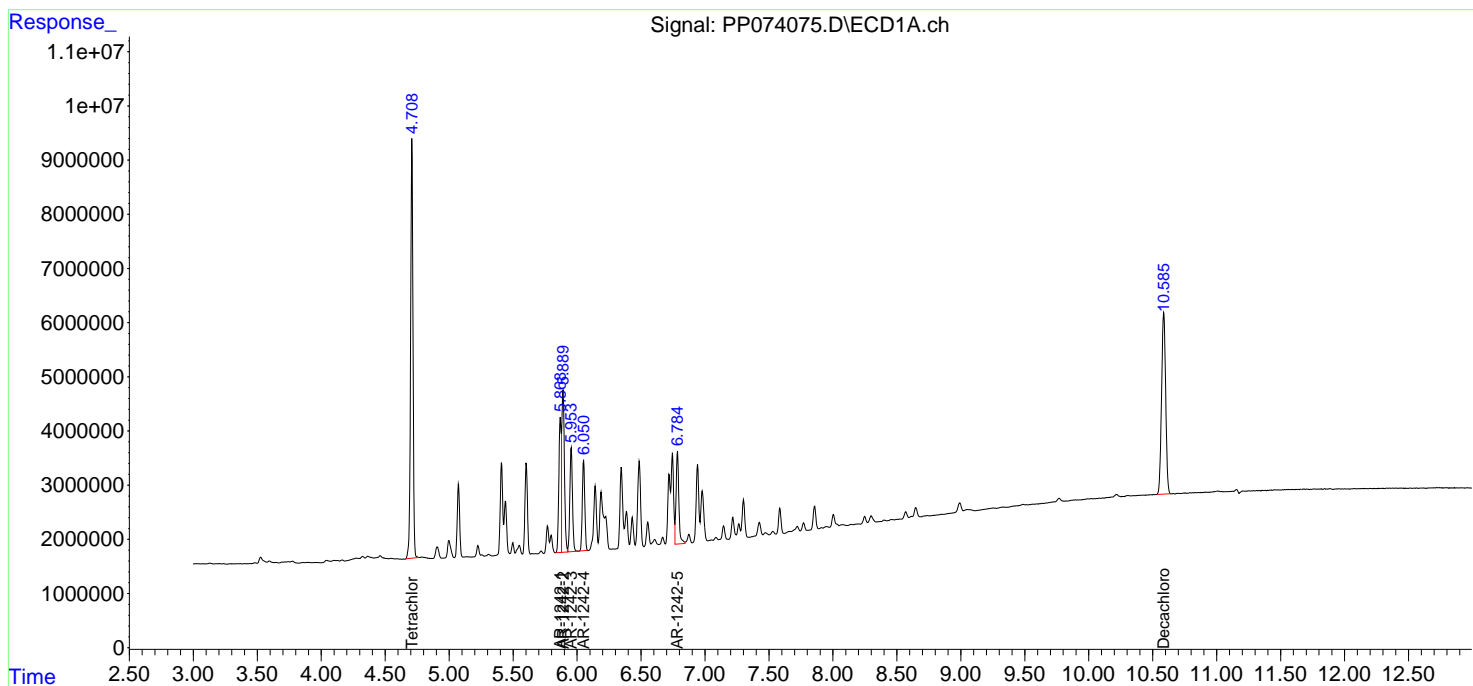
(f)=RT Delta > 1/2 Window (#)=Amounts differ by > 25% (m)=manual int.

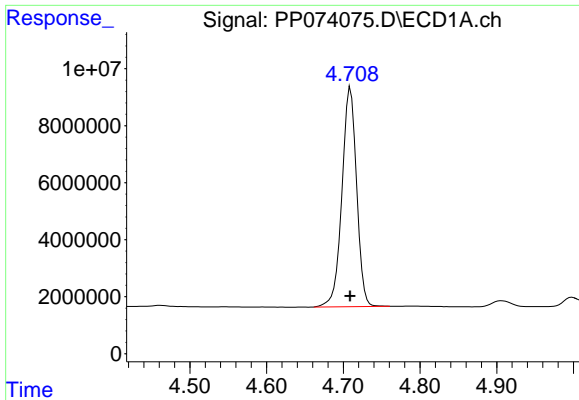
Data Path : Z:\pestpcbsrv\HPCHEM1\ECD_P\Data\PP072825\
 Data File : PP074075.D
 Signal(s) : Signal #1: ECD1A.ch Signal #2: ECD2B.ch
 Acq On : 28 Jul 2025 14:22
 Operator : YP\AJ
 Sample : AR1242ICC1000
 Misc :
 ALS Vial : 3 Sample Multiplier: 1

Instrument :
 ECD_P
 ClientSampleId :
 AR1242ICC1000

Integration File signal 1: autoint1.e
 Integration File signal 2: autoint2.e
 Quant Time: Jul 28 15:22:45 2025
 Quant Method : Z:\pestpcbsrv\HPCHEM1\ECD_P\methods\PP072525.M
 Quant Title : GC EXTRACTABLES
 QLast Update : Mon Jul 28 15:19:19 2025
 Response via : Initial Calibration
 Integrator: ChemStation

Volume Inj. : 2 µl
 Signal #1 Phase : ZB-MR1 Signal #2 Phase: ZB-MR2
 Signal #1 Info : 30Mx0.32mmx 0.50µ Signal #2 Info : 30M x 0.32mm x 0.25µm

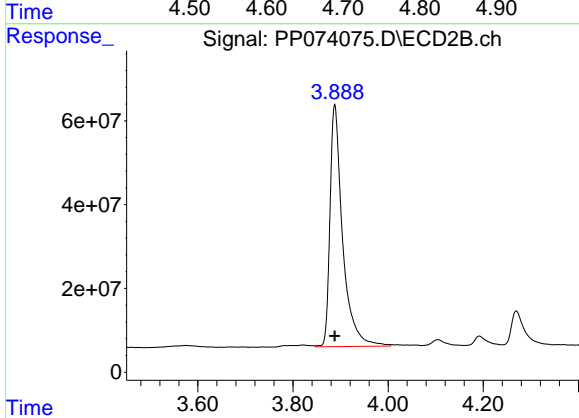




#1 Tetrachloro-m-xylene

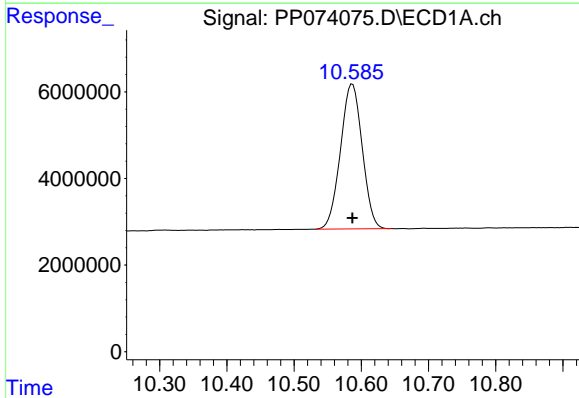
R.T.: 4.709 min
 Delta R.T.: 0.000 min
 Response: 102596181
 Conc: 95.14 ng/ml

Instrument :
 ECD_P
 ClientSampleId :
 AR1242ICC1000



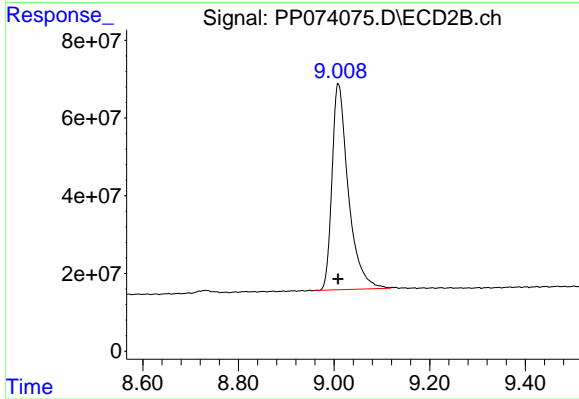
#1 Tetrachloro-m-xylene

R.T.: 3.888 min
 Delta R.T.: 0.000 min
 Response: 1066733922
 Conc: 99.63 ng/ml



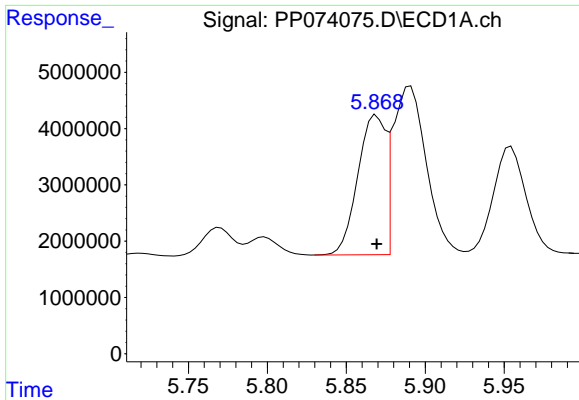
#2 Decachlorobiphenyl

R.T.: 10.587 min
 Delta R.T.: 0.000 min
 Response: 74999341
 Conc: 96.77 ng/ml



#2 Decachlorobiphenyl

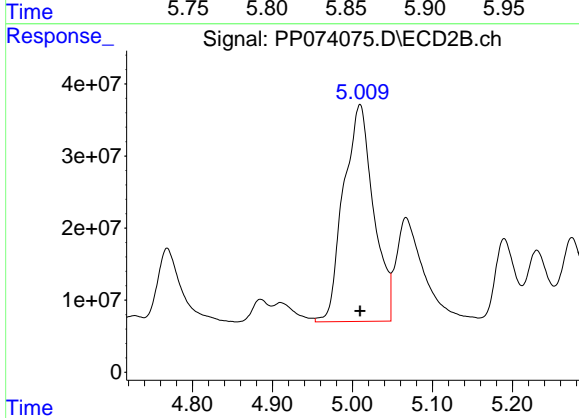
R.T.: 9.009 min
 Delta R.T.: 0.000 min
 Response: 1255723492
 Conc: 98.46 ng/ml



#16 AR-1242-1

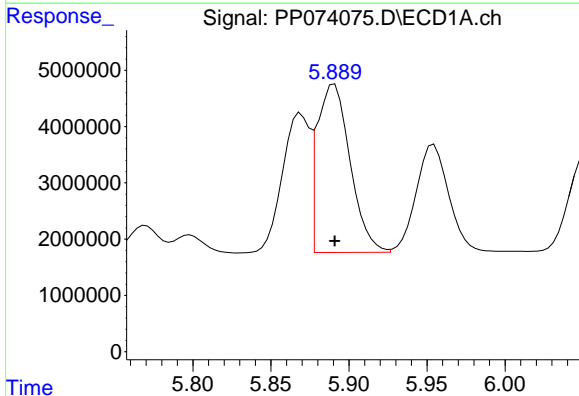
R.T.: 5.869 min
 Delta R.T.: 0.000 min
 Response: 30159599
 Conc: 938.58 ng/ml

Instrument :
 ECD_P
 ClientSampleId :
 AR1242ICC1000



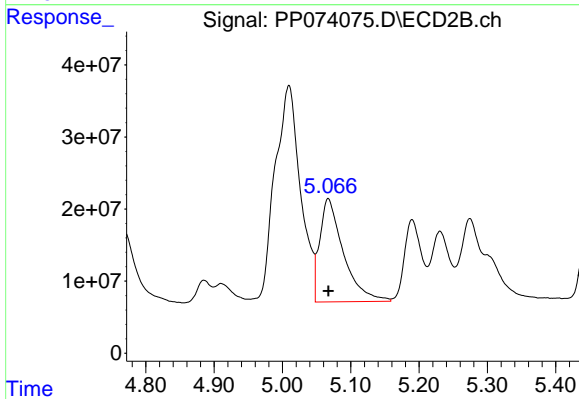
#16 AR-1242-1

R.T.: 5.010 min
 Delta R.T.: 0.000 min
 Response: 785134924
 Conc: 980.17 ng/ml



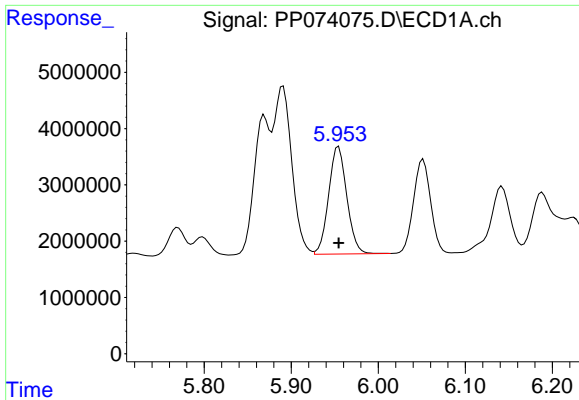
#17 AR-1242-2

R.T.: 5.891 min
 Delta R.T.: 0.000 min
 Response: 43966180
 Conc: 937.04 ng/ml



#17 AR-1242-2

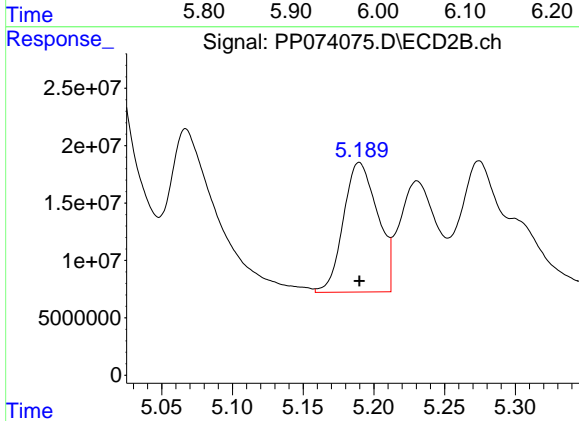
R.T.: 5.067 min
 Delta R.T.: 0.000 min
 Response: 344877997
 Conc: 981.99 ng/ml



#18 AR-1242-3

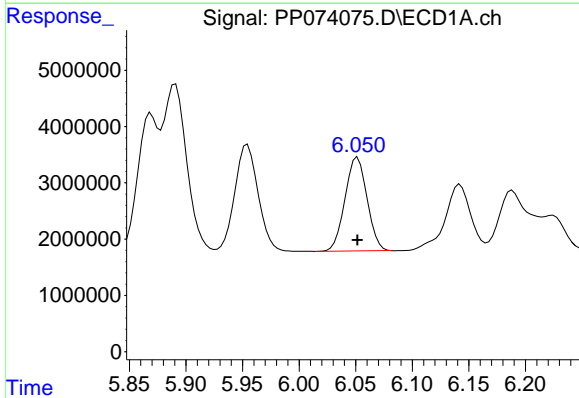
R.T.: 5.954 min
 Delta R.T.: 0.000 min
 Response: 27626649
 Conc: 931.40 ng/ml

Instrument :
 ECD_P
 ClientSampleId :
 AR1242ICC1000



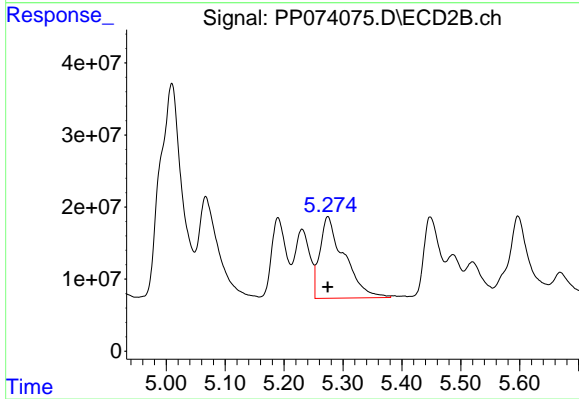
#18 AR-1242-3

R.T.: 5.190 min
 Delta R.T.: 0.000 min
 Response: 190393805
 Conc: 969.73 ng/ml



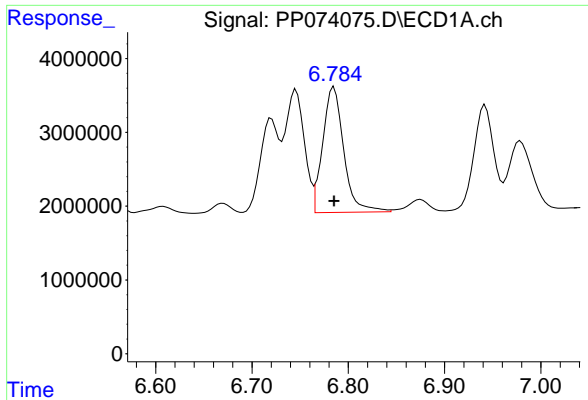
#19 AR-1242-4

R.T.: 6.052 min
 Delta R.T.: 0.000 min
 Response: 22543330
 Conc: 933.01 ng/ml



#19 AR-1242-4

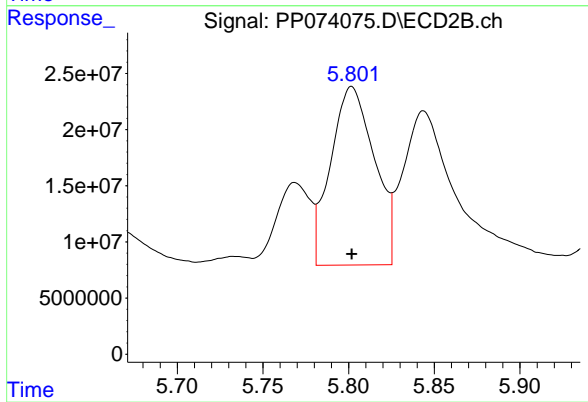
R.T.: 5.274 min
 Delta R.T.: 0.000 min
 Response: 323254628
 Conc: 1306.06 ng/ml



#20 AR-1242-5

R.T.: 6.785 min
Delta R.T.: 0.000 min
Response: 25858203
Conc: 905.55 ng/ml

Instrument :
ECD_P
ClientSampleId :
AR1242ICC1000



#20 AR-1242-5

R.T.: 5.802 min
Delta R.T.: 0.000 min
Response: 283034270
Conc: 974.06 ng/ml