

Data Path : Z:\pestpcbsrv\HPCHEM1\ECD_P\Data\PP072825\
 Data File : PP074080.D
 Signal(s) : Signal #1: ECD1A.ch Signal #2: ECD2B.ch
 Acq On : 28 Jul 2025 15:44
 Operator : YP\AJ
 Sample : AR1248ICC1000
 Misc :
 ALS Vial : 8 Sample Multiplier: 1

Instrument :
 ECD_P
 ClientSampleId :
 AR1248ICC1000

Integration File signal 1: autoint1.e
 Integration File signal 2: autoint2.e
 Quant Time: Jul 28 16:35:17 2025
 Quant Method : Z:\pestpcbsrv\HPCHEM1\ECD_P\methods\PP072525.M
 Quant Title : GC EXTRACTABLES
 QLast Update : Mon Jul 28 16:31:06 2025
 Response via : Initial Calibration
 Integrator: ChemStation

Volume Inj. : 2 µl
 Signal #1 Phase : ZB-MR1 Signal #2 Phase: ZB-MR2
 Signal #1 Info : 30Mx0.32mmx 0.50µ Signal #2 Info : 30M x 0.32mm x 0.25µm

Compound	RT#1	RT#2	Resp#1	Resp#2	ng/ml	ng/ml

System Monitoring Compounds						
1) SA Tetrachlo...	4.716	3.890	106.3E6	1122.9E6	96.651	101.130
2) SA Decachlor...	10.589	9.009	76059965	1286.6E6	95.844	98.045
Target Compounds						
21) L5 AR-1248-1	5.874	5.010	25129001	513.7E6	944.814	982.065
22) L5 AR-1248-2	6.147	5.231	34512149	311.2E6	943.577	980.378
23) L5 AR-1248-3	6.351	5.275	38465087	354.3E6	946.324	961.097
24) L5 AR-1248-4	6.751	5.449	44099380	365.6E6	948.591	977.151
25) L5 AR-1248-5	6.790	5.844	44248276	613.0E6	929.110	977.940

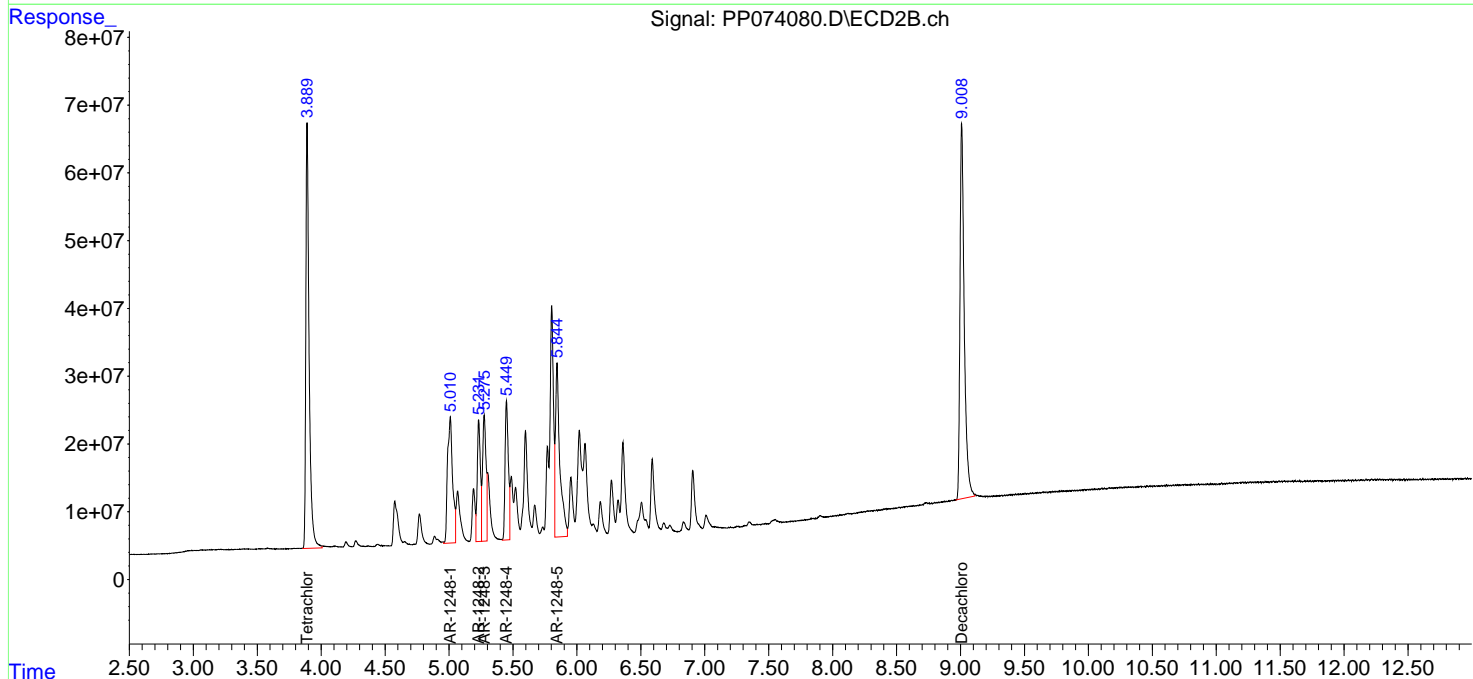
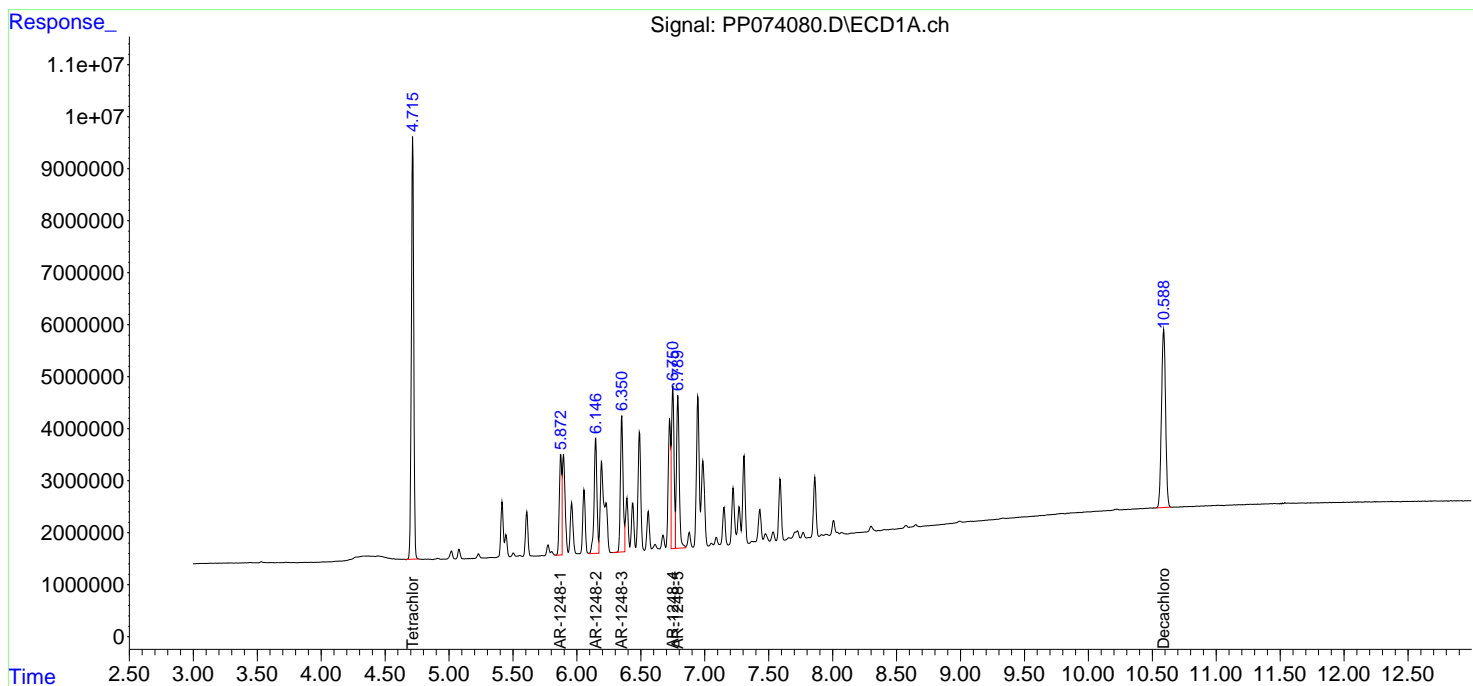
(f)=RT Delta > 1/2 Window (#)=Amounts differ by > 25% (m)=manual int.

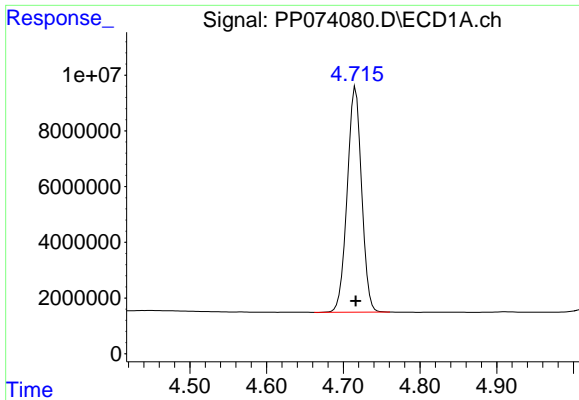
Data Path : Z:\pestpcbsrv\HPCHEM1\ECD_P\Data\PP072825\
 Data File : PP074080.D
 Signal(s) : Signal #1: ECD1A.ch Signal #2: ECD2B.ch
 Acq On : 28 Jul 2025 15:44
 Operator : YP\AJ
 Sample : AR1248ICC1000
 Misc :
 ALS Vial : 8 Sample Multiplier: 1

Instrument :
 ECD_P
 ClientSampleId :
 AR1248ICC1000

Integration File signal 1: autoint1.e
 Integration File signal 2: autoint2.e
 Quant Time: Jul 28 16:35:17 2025
 Quant Method : Z:\pestpcbsrv\HPCHEM1\ECD_P\methods\PP072525.M
 Quant Title : GC EXTRACTABLES
 QLast Update : Mon Jul 28 16:31:06 2025
 Response via : Initial Calibration
 Integrator: ChemStation

Volume Inj. : 2 µl
 Signal #1 Phase : ZB-MR1 Signal #2 Phase: ZB-MR2
 Signal #1 Info : 30Mx0.32mmx 0.50µ Signal #2 Info : 30M x 0.32mm x 0.25µm

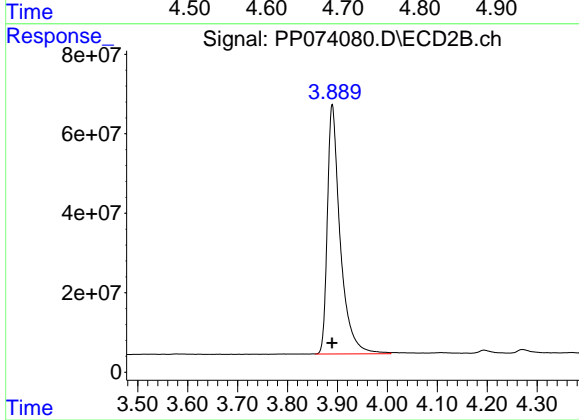




#1 Tetrachloro-m-xylene

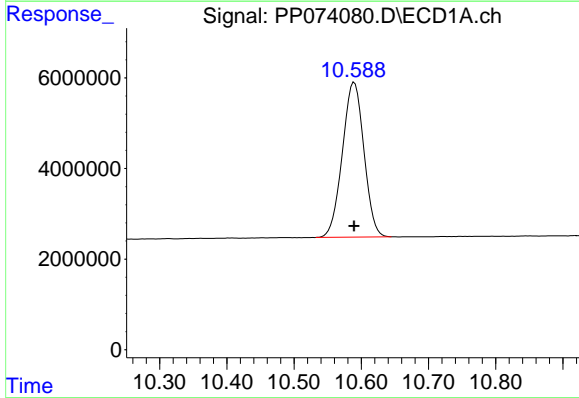
R.T.: 4.716 min
 Delta R.T.: 0.000 min
 Response: 106326031
 Conc: 96.65 ng/ml

Instrument :
 ECD_P
 ClientSampleId :
 AR1248ICC1000



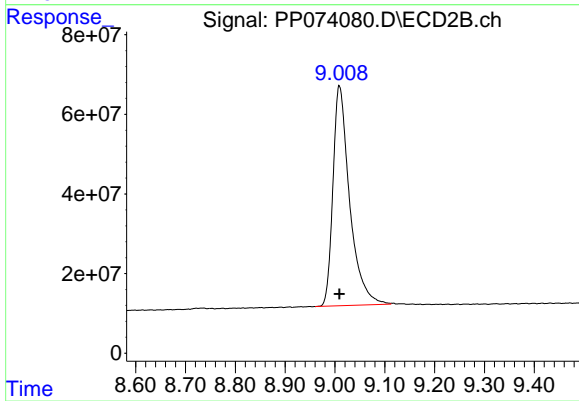
#1 Tetrachloro-m-xylene

R.T.: 3.890 min
 Delta R.T.: 0.000 min
 Response: 112285220
 Conc: 101.13 ng/ml



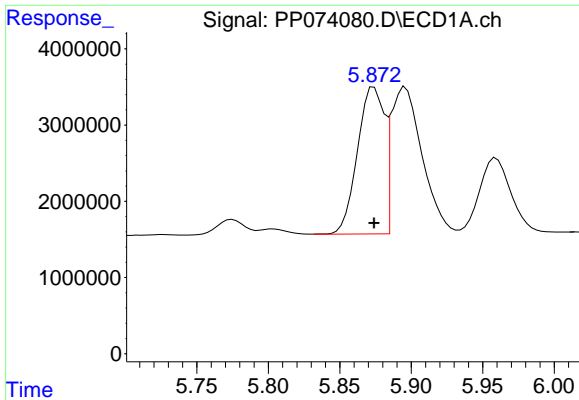
#2 Decachlorobiphenyl

R.T.: 10.589 min
 Delta R.T.: 0.000 min
 Response: 76059965
 Conc: 95.84 ng/ml



#2 Decachlorobiphenyl

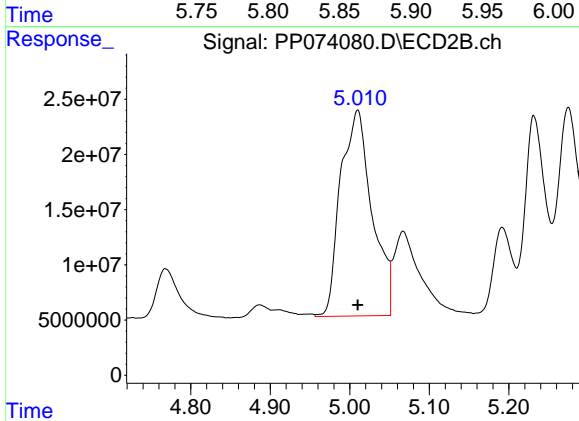
R.T.: 9.009 min
 Delta R.T.: 0.000 min
 Response: 1286567642
 Conc: 98.04 ng/ml



#21 AR-1248-1

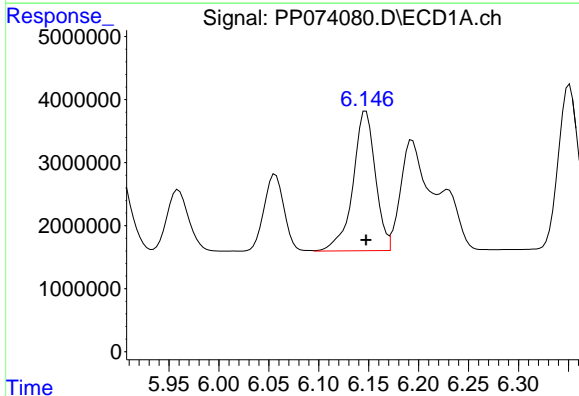
R.T.: 5.874 min
 Delta R.T.: 0.000 min
 Response: 25129001
 Conc: 944.81 ng/ml

Instrument :
 ECD_P
 ClientSampleId :
 AR1248ICC1000



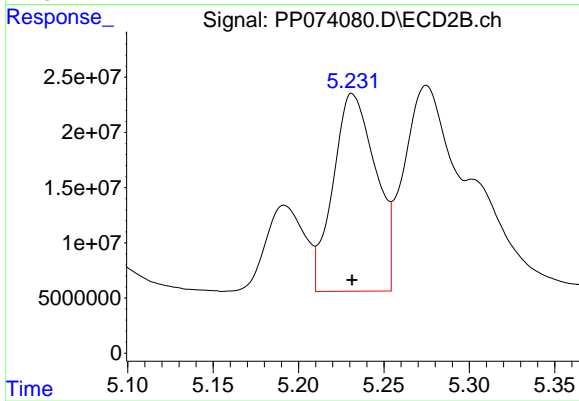
#21 AR-1248-1

R.T.: 5.010 min
 Delta R.T.: 0.000 min
 Response: 513658034
 Conc: 982.06 ng/ml



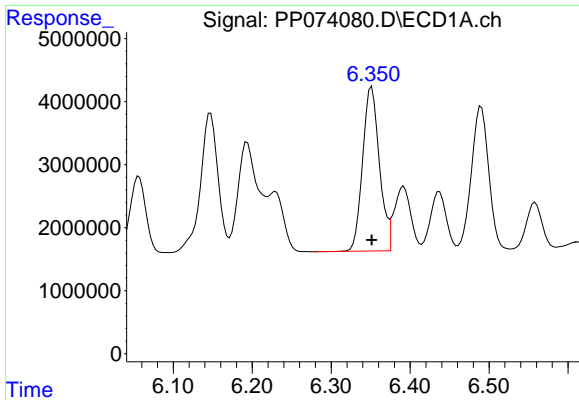
#22 AR-1248-2

R.T.: 6.147 min
 Delta R.T.: 0.000 min
 Response: 34512149
 Conc: 943.58 ng/ml



#22 AR-1248-2

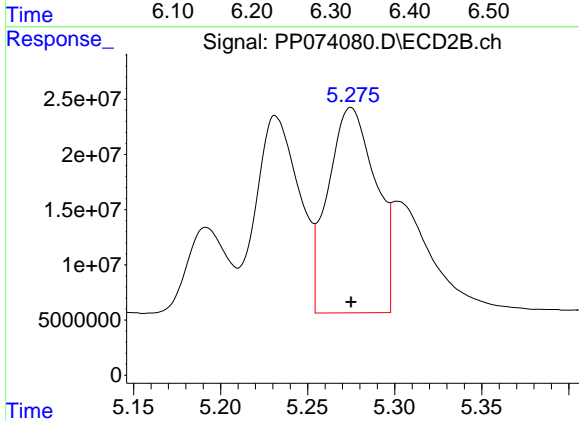
R.T.: 5.231 min
 Delta R.T.: 0.000 min
 Response: 311187596
 Conc: 980.38 ng/ml



#23 AR-1248-3

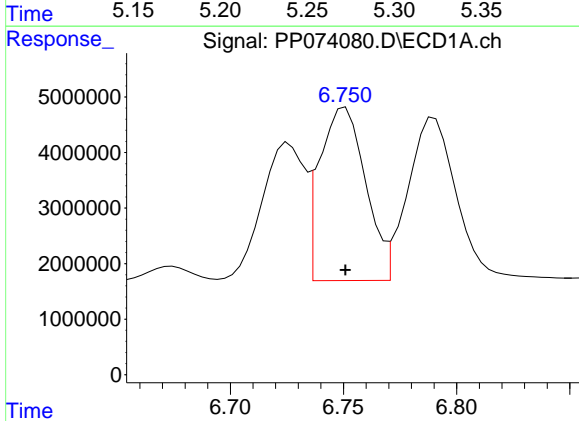
R.T.: 6.351 min
 Delta R.T.: 0.000 min
 Response: 38465087
 Conc: 946.32 ng/ml

Instrument :
 ECD_P
 ClientSampleId :
 AR1248ICC1000



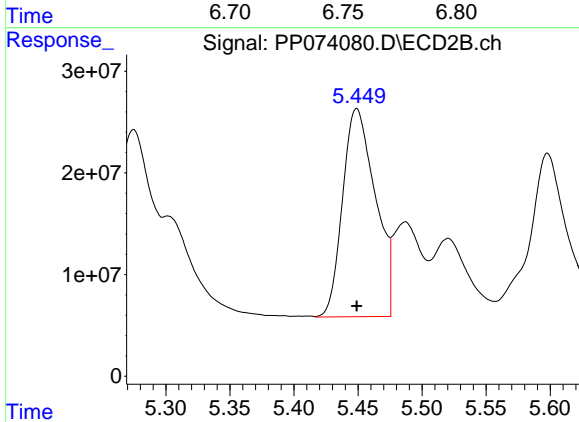
#23 AR-1248-3

R.T.: 5.275 min
 Delta R.T.: 0.000 min
 Response: 354294172
 Conc: 961.10 ng/ml



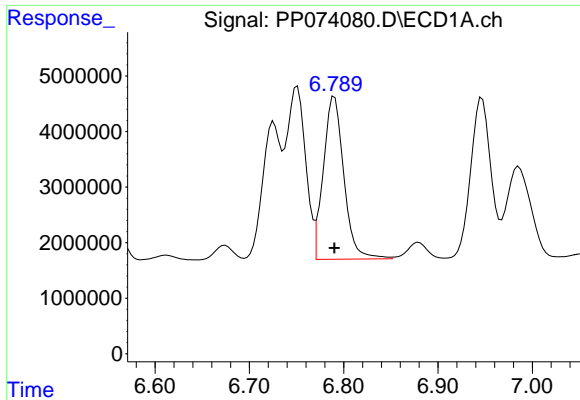
#24 AR-1248-4

R.T.: 6.751 min
 Delta R.T.: 0.000 min
 Response: 44099380
 Conc: 948.59 ng/ml



#24 AR-1248-4

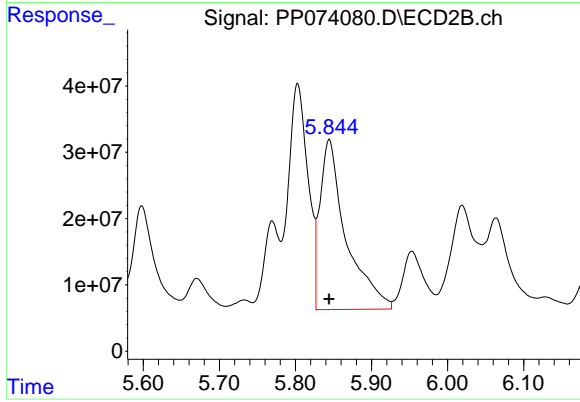
R.T.: 5.449 min
 Delta R.T.: 0.000 min
 Response: 365613110
 Conc: 977.15 ng/ml



#25 AR-1248-5

R.T.: 6.790 min
Delta R.T.: 0.000 min
Response: 44248276
Conc: 929.11 ng/ml

Instrument :
ECD_P
ClientSampleId :
AR1248ICC1000



#25 AR-1248-5

R.T.: 5.844 min
Delta R.T.: 0.000 min
Response: 612977380
Conc: 977.94 ng/ml