

Data Path : Z:\pestpcbsrv\HPCHEM1\ECD_P\Data\PP072921\
 Data File : PP037829.D
 Signal(s) : Signal #1: ECD1A.CH Signal #2: ECD2B.CH
 Acq On : 30 Jul 2021 00:16
 Operator : DD\AJ
 Sample : M2940-01
 Misc : AR1248 LOD 40 PPB
 ALS Vial : 48 Sample Multiplier: 1

Instrument :
 ECD_P
ClientSampleId :
 LOD-MDL-SOIL-01-QT3-2021

Integration File signal 1: autoint1.e
 Integration File signal 2: autoint2.e
 Quant Time: Jul 30 02:19:50 2021
 Quant Method : Z:\pestpcbsrv\HPCHEM1\ECD_P\methods\PP070621.M
 Quant Title : GC EXTRACTABLES
 QLast Update : Wed Jul 07 08:32:32 2021
 Response via : Initial Calibration
 Integrator: ChemStation 6890 Scale Mode: Small noise peaks clipped

Volume Inj. : 2 µl
 Signal #1 Phase : ZB-MR1 Signal #2 Phase: ZB-MR2
 Signal #1 Info : 30Mx0.32mmx 0.50µ Signal #2 Info : 30M x 0.32mm x 0.25µm

Compound	RT#1	RT#2	Resp#1	Resp#2	ng/ml	ng/ml

System Monitoring Compounds						
1) SA Tetrachlo...	4.953	3.944	909082	515107	20.002	18.824
2) SA Decachlor...	10.983	9.235	925794	507844	20.110	18.245
Target Compounds						
21) L5 AR-1248-1	6.274	5.193	41395	19732	39.440	31.268
22) L5 AR-1248-2	6.568	5.457	51688	24448	34.817	29.805
23) L5 AR-1248-3	6.785	5.500	57958	24039	35.088	28.090
24) L5 AR-1248-4	7.215	5.683	72198	29457	38.198	28.946
25) L5 AR-1248-5	7.253	6.106	75107	32876	40.130	30.993

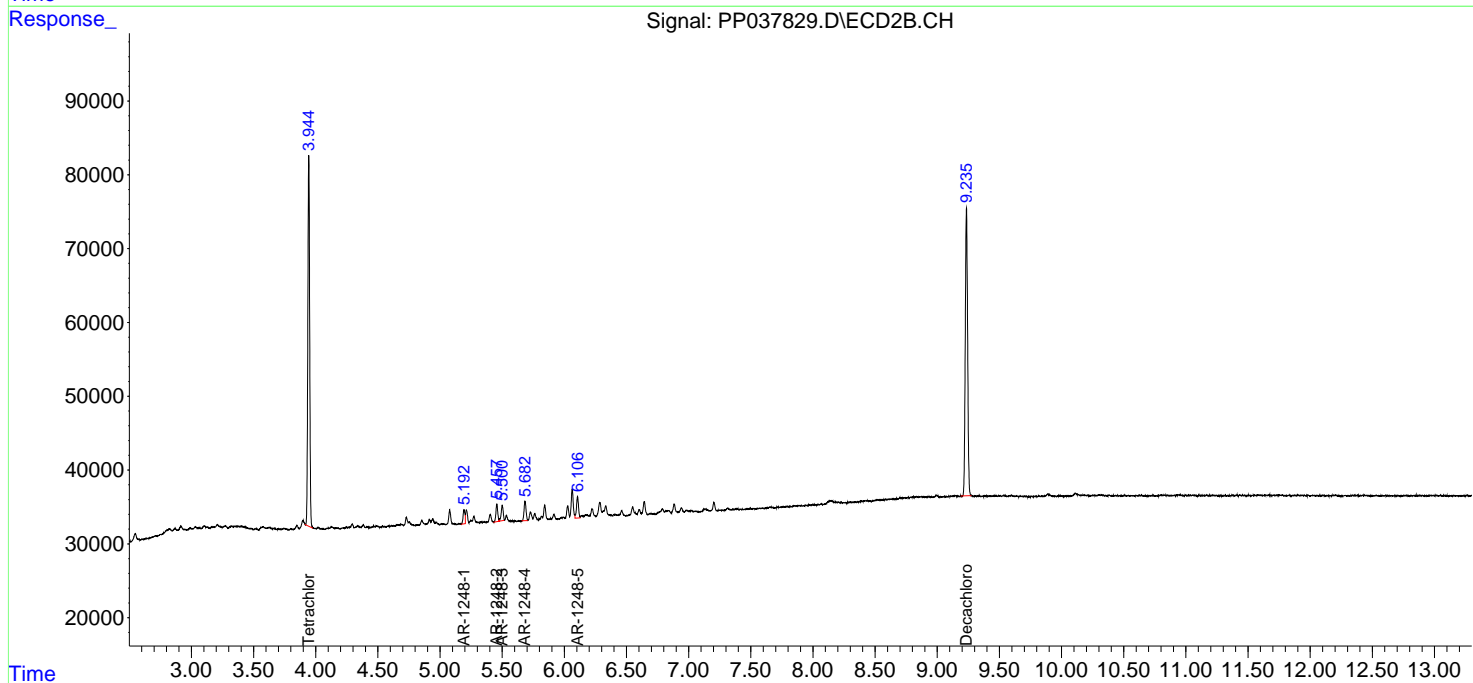
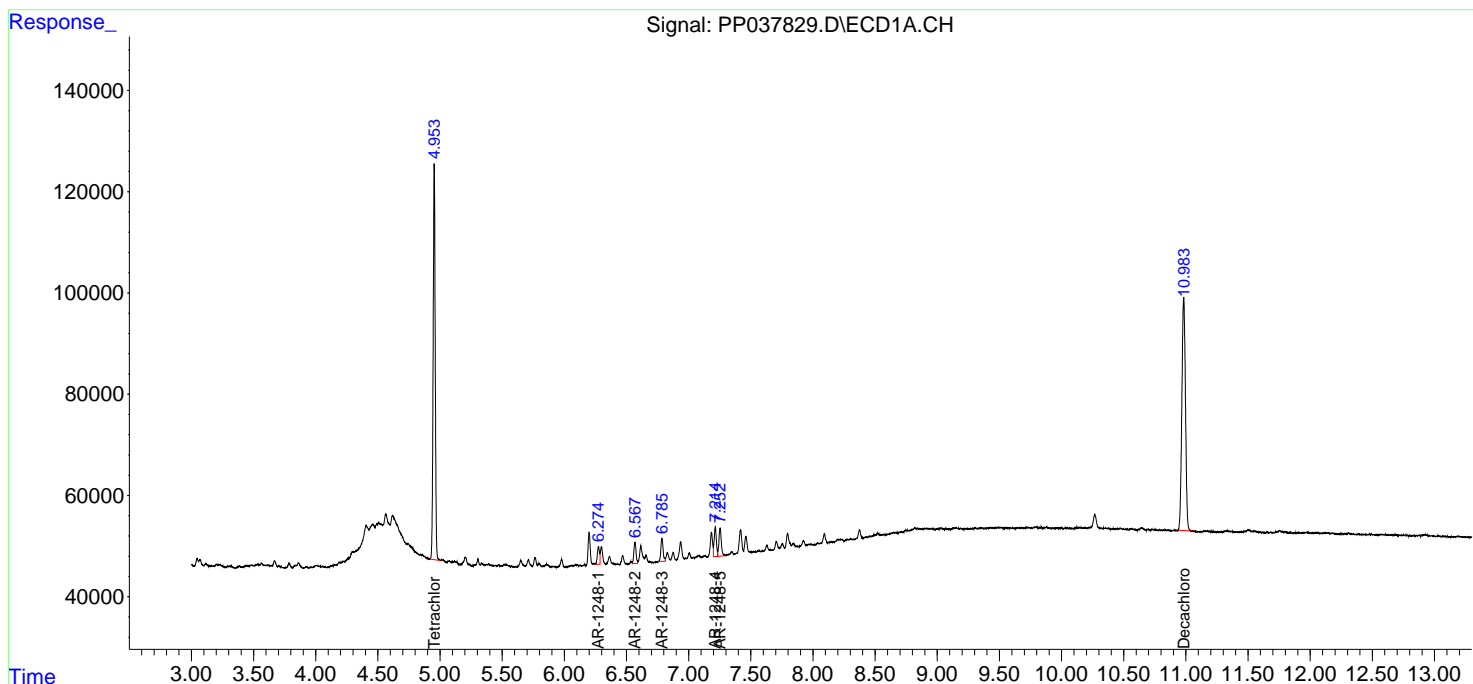
(f)=RT Delta > 1/2 Window (#)=Amounts differ by > 25% (m)=manual int.

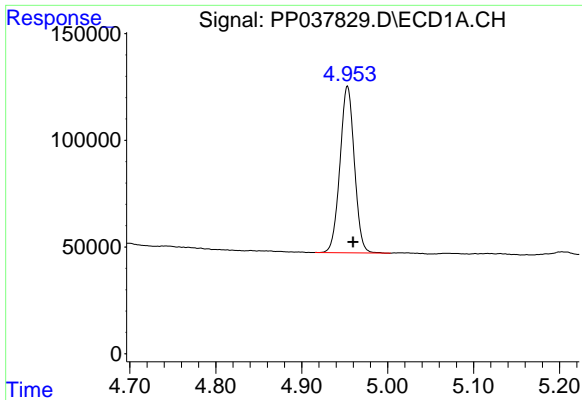
Data Path : Z:\pestpcbsrv\HPCHEM1\ECD_P\Data\PP072921\
 Data File : PP037829.D
 Signal(s) : Signal #1: ECD1A.CH Signal #2: ECD2B.CH
 Acq On : 30 Jul 2021 00:16
 Operator : DD\AJ
 Sample : M2940-01
 Misc : AR1248 LOD 40 PPB
 ALS Vial : 48 Sample Multiplier: 1

Instrument :
 ECD_P
 ClientSampleId :
 LOD-MDL-SOIL-01-QT3-2021

Integration File signal 1: autoint1.e
 Integration File signal 2: autoint2.e
 Quant Time: Jul 30 02:19:50 2021
 Quant Method : Z:\pestpcbsrv\HPCHEM1\ECD_P\methods\PP070621.M
 Quant Title : GC EXTRACTABLES
 QLast Update : Wed Jul 07 08:32:32 2021
 Response via : Initial Calibration
 Integrator: ChemStation 6890 Scale Mode: Small noise peaks clipped

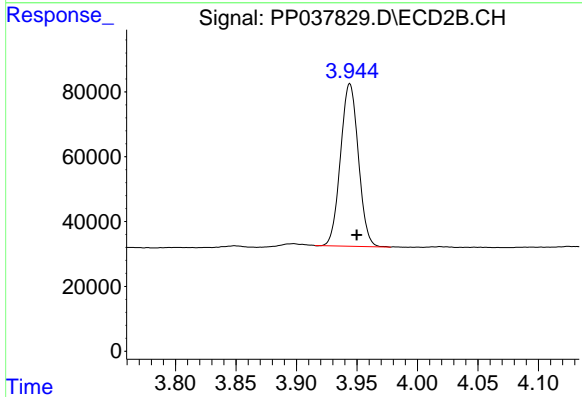
Volume Inj. : 2 µl
 Signal #1 Phase : ZB-MR1 Signal #2 Phase: ZB-MR2
 Signal #1 Info : 30Mx0.32mmx 0.50µ Signal #2 Info : 30M x 0.32mm x 0.25µm



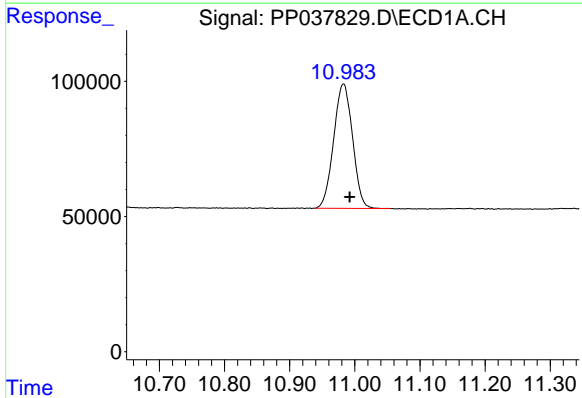


#1 Tetrachloro-m-xylene
 R.T.: 4.953 min
 Delta R.T.: -0.007 min
 Response: 909082
 Conc: 20.00 ng/ml

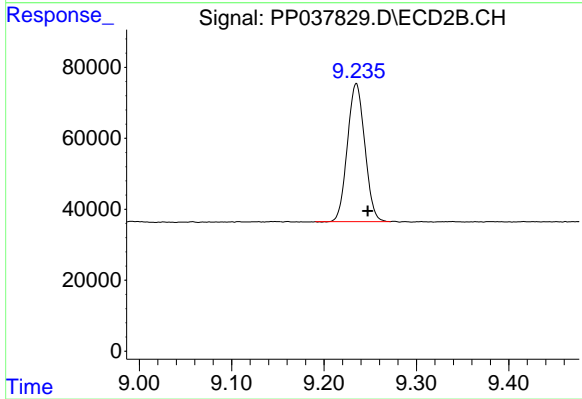
Instrument :
 ECD_P
 ClientSampleId :
 LOD-MDL-SOIL-01-QT3-2021



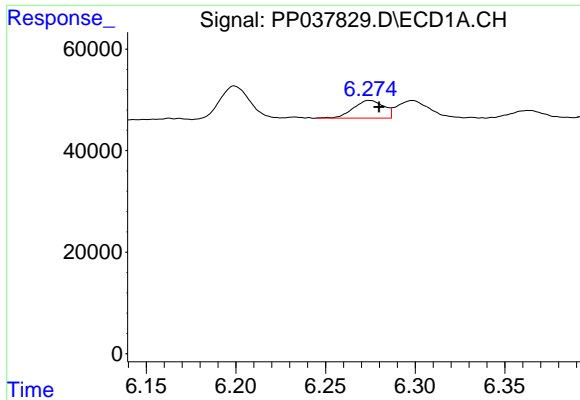
#1 Tetrachloro-m-xylene
 R.T.: 3.944 min
 Delta R.T.: -0.006 min
 Response: 515107
 Conc: 18.82 ng/ml



#2 Decachlorobiphenyl
 R.T.: 10.983 min
 Delta R.T.: -0.010 min
 Response: 925794
 Conc: 20.11 ng/ml



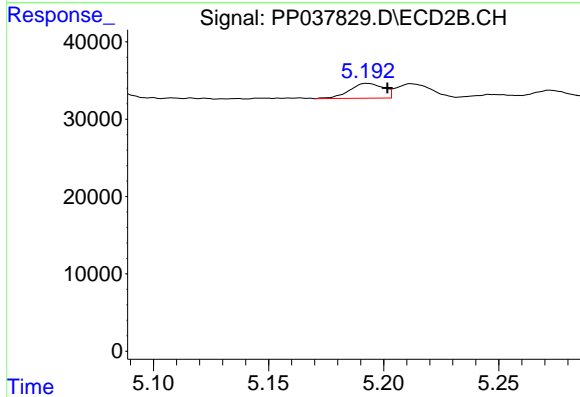
#2 Decachlorobiphenyl
 R.T.: 9.235 min
 Delta R.T.: -0.012 min
 Response: 507844
 Conc: 18.24 ng/ml



#21 AR-1248-1

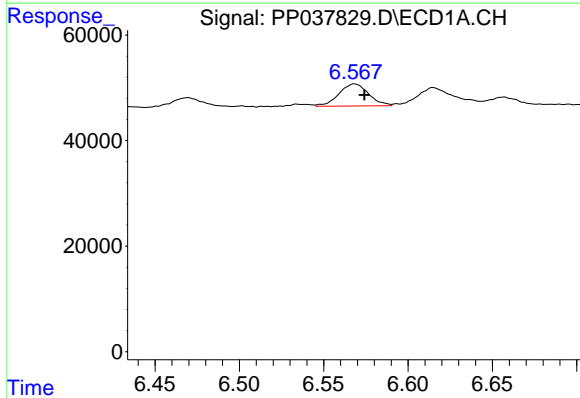
R.T.: 6.274 min
 Delta R.T.: -0.005 min
 Response: 41395
 Conc: 39.44 ng/ml

Instrument :
 ECD_P
 ClientSampleId :
 LOD-MDL-SOIL-01-QT3-2021



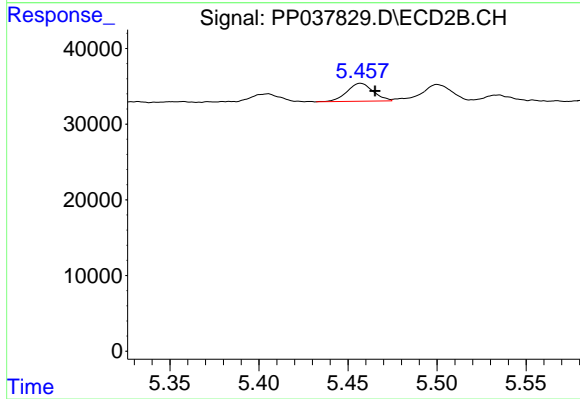
#21 AR-1248-1

R.T.: 5.193 min
 Delta R.T.: -0.009 min
 Response: 19732
 Conc: 31.27 ng/ml



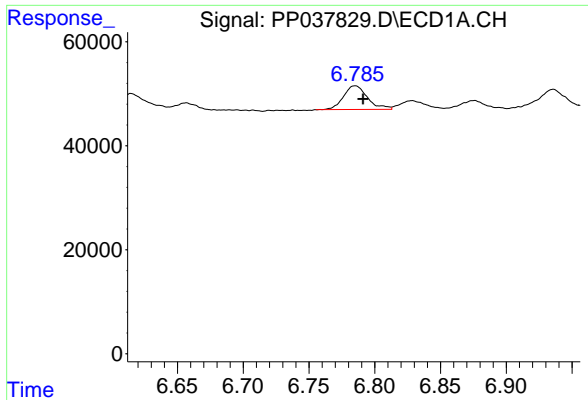
#22 AR-1248-2

R.T.: 6.568 min
 Delta R.T.: -0.006 min
 Response: 51688
 Conc: 34.82 ng/ml



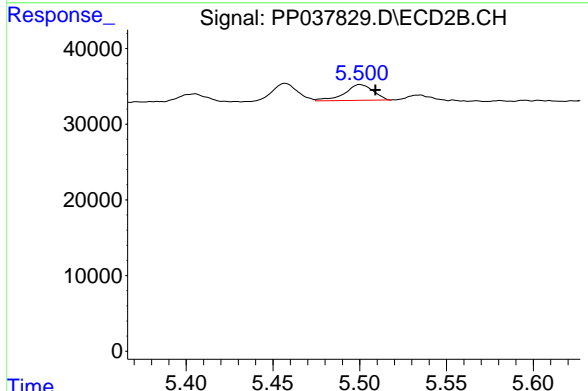
#22 AR-1248-2

R.T.: 5.457 min
 Delta R.T.: -0.008 min
 Response: 24448
 Conc: 29.80 ng/ml

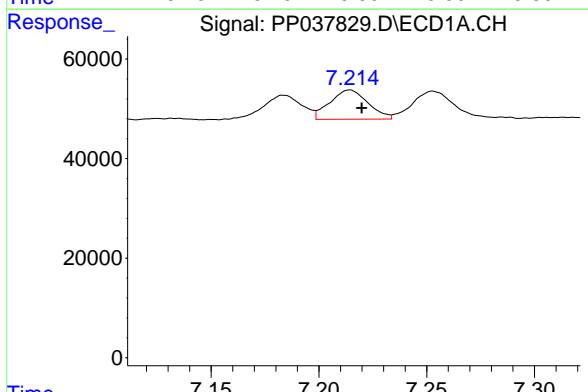


#23 AR-1248-3
 R.T.: 6.785 min
 Delta R.T.: -0.006 min
 Response: 57958
 Conc: 35.09 ng/ml

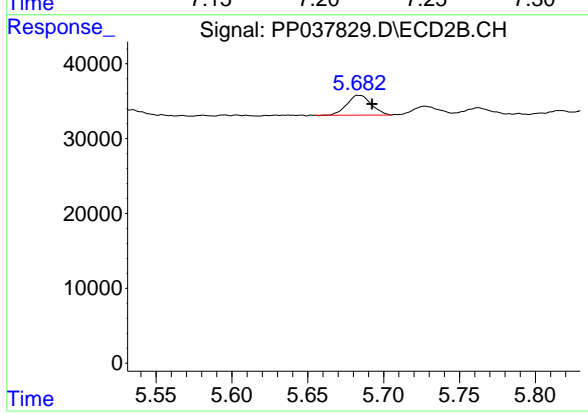
Instrument :
 ECD_P
ClientSampleId :
 LOD-MDL-SOIL-01-QT3-2021



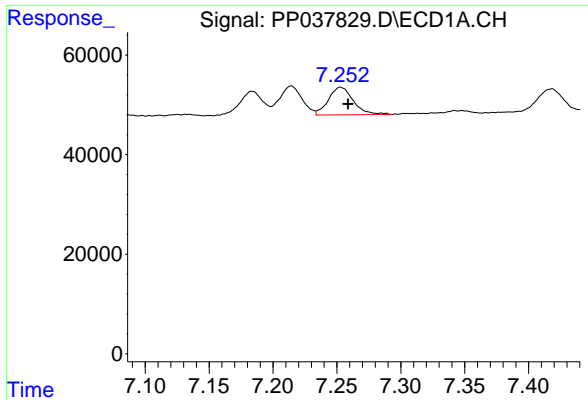
#23 AR-1248-3
 R.T.: 5.500 min
 Delta R.T.: -0.009 min
 Response: 24039
 Conc: 28.09 ng/ml



#24 AR-1248-4
 R.T.: 7.215 min
 Delta R.T.: -0.005 min
 Response: 72198
 Conc: 38.20 ng/ml



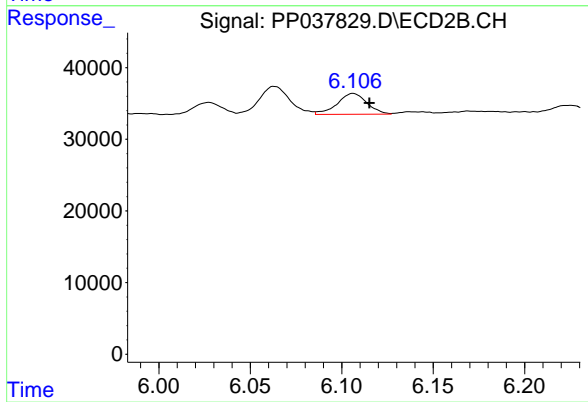
#24 AR-1248-4
 R.T.: 5.683 min
 Delta R.T.: -0.009 min
 Response: 29457
 Conc: 28.95 ng/ml



#25 AR-1248-5

R.T.: 7.253 min
Delta R.T.: -0.006 min
Response: 75107
Conc: 40.13 ng/ml

Instrument :
ECD_P
ClientSampleId :
LOD-MDL-SOIL-01-QT3-2021



#25 AR-1248-5

R.T.: 6.106 min
Delta R.T.: -0.009 min
Response: 32876
Conc: 30.99 ng/ml