

Data Path : Z:\pestpcbsrv\HPCHEM1\ECD_P\Data\PP072925\
 Data File : PP074108.D
 Signal(s) : Signal #1: ECD1A.ch Signal #2: ECD2B.ch
 Acq On : 29 Jul 2025 16:34
 Operator : YP\AJ
 Sample : PB169036BL
 Misc :
 ALS Vial : 17 Sample Multiplier: 1

Instrument :
 ECD_P
 ClientSampleId :
 PB169036BL

Integration File signal 1: autoint1.e
 Integration File signal 2: autoint2.e
 Quant Time: Jul 30 08:45:01 2025
 Quant Method : Z:\pestpcbsrv\HPCHEM1\ECD_P\methods\PP072525.M
 Quant Title : GC EXTRACTABLES
 QLast Update : Mon Jul 28 18:16:14 2025
 Response via : Initial Calibration
 Integrator: ChemStation

Volume Inj. : 2 µl
 Signal #1 Phase : ZB-MR1 Signal #2 Phase: ZB-MR2
 Signal #1 Info : 30Mx0.32mmx 0.50µ Signal #2 Info : 30M x 0.32mm x 0.25µm

Compound	RT#1	RT#2	Resp#1	Resp#2	ng/ml	ng/ml
System Monitoring Compounds						
1) SA Tetrachlo...	4.721	3.889	23403169	194.4E6	22.404	21.113
2) SA Decachlor...	10.603	9.006	16508333	243.2E6	24.582	21.391
Target Compounds						
3) L1 AR-1016-1	5.860	5.016	71642	263275	1.949	0.310 #
4) L1 AR-1016-2	5.860	5.067	71642	112327	1.314	0.299 #
5) L1 AR-1016-3	5.928	5.196	67795	426488	1.955	1.935
6) L1 AR-1016-4	6.011	5.234	672423	351797	24.279	1.683 #
7) L1 AR-1016-5	6.331	5.449	98259	839155	3.653	3.639
8) L2 AR-1221-1	4.929	4.115	138571	184592	8.849	1.648 #
9) L2 AR-1221-2	5.026f	4.193	368083	1981343	30.983	25.873
10) L2 AR-1221-3	5.026	4.280	368083	182498	10.881	0.635 #
11) L3 AR-1232-1	5.026f	4.280	368083	182498	13.287	0.803 #
12) L3 AR-1232-2	5.580	5.016	138007	263275	9.927	0.866 #
13) L3 AR-1232-3	5.860	5.196	71642	426488	2.636	4.150 #
14) L3 AR-1232-4	6.011	5.278	672423	488702	48.404	4.632 #
15) L3 AR-1232-5	6.126	5.449	42025	839155	4.301	8.692 #
16) L4 AR-1242-1	5.860	5.016	71642	263275	2.170	0.328 #
17) L4 AR-1242-2	5.904	5.067	77427	112327	1.602	0.328 #
18) L4 AR-1242-3	5.928	5.196	67795	426488	2.225	2.159
19) L4 AR-1242-4	6.011f	5.278	672423	488702	27.790	2.030 #
20) L4 AR-1242-5	6.818	5.809	3255005	1002321	106.451	3.510 #
21) L5 AR-1248-1	5.860	5.002	71642	242463	2.659	0.485 #
22) L5 AR-1248-2	6.149	5.234	89711	351797	2.408	1.130 #
23) L5 AR-1248-3	6.331	5.278	98259	488702	2.389	1.411 #
24) L5 AR-1248-4	6.818f	5.449	3255005	839155	69.552	2.339 #
25) L5 AR-1248-5	6.818	5.850	3255005	668467	60.636	1.117 #
26) L6 AR-1254-1	0.000	5.809	0	1002321	N.D.	1.428 #
27) L6 AR-1254-2	6.956	5.951	205195	1285876	2.928	2.401
28) L6 AR-1254-3	7.270	6.361	18060	851990	0.247	0.973 #
29) L6 AR-1254-4	7.562	6.598	32310	283748	0.619	0.418 #
30) L6 AR-1254-5	7.958	7.019	100964	436904	1.671	0.546 #
31) L7 AR-1260-1	7.417f	6.690	41219	708205	0.959	0.904
32) L7 AR-1260-2	7.743	6.839	246224	424447	4.498	0.559 #
33) L7 AR-1260-3	8.083	7.062	58726	740117	1.547	0.931 #
34) L7 AR-1260-4	8.321	7.322	304995	358262	6.378	0.624 #
35) L7 AR-1260-5	8.644	7.554	141661	500539	1.661	0.322 #
36) L8 AR-1262-1	8.321	7.062	304995	740117	4.917	0.625 #
37) L8 AR-1262-2	8.644	7.322	141661	358262	1.281	0.427 #
38) L8 AR-1262-3	9.003	7.850	-33544	936543	N.D.	1.214 #
39) L8 AR-1262-4	9.049	7.912	20199	937199	0.352	0.665 #
40) L8 AR-1262-5	9.743	8.425	36566	606634	0.939	0.964
41) L9 AR-1268-1	9.003	7.850	-33544	936543	N.D.	0.419 #

Data Path : Z:\pestpcbsrv\HPCHEM1\ECD_P\Data\PP072925\
 Data File : PP074108.D
 Signal(s) : Signal #1: ECD1A.ch Signal #2: ECD2B.ch
 Acq On : 29 Jul 2025 16:34
 Operator : YP\AJ
 Sample : PB169036BL
 Misc :
 ALS Vial : 17 Sample Multiplier: 1

Instrument :
 ECD_P
 ClientSampleId :
 PB169036BL

Integration File signal 1: autoint1.e
 Integration File signal 2: autoint2.e
 Quant Time: Jul 30 08:45:01 2025
 Quant Method : Z:\pestpcbsrv\HPCHEM1\ECD_P\methods\PP072525.M
 Quant Title : GC EXTRACTABLES
 QLast Update : Mon Jul 28 18:16:14 2025
 Response via : Initial Calibration
 Integrator: ChemStation

Volume Inj. : 2 µl
 Signal #1 Phase : ZB-MR1 Signal #2 Phase: ZB-MR2
 Signal #1 Info : 30Mx0.32mmx 0.50µ Signal #2 Info : 30M x 0.32mm x 0.25µm

	Compound	RT#1	RT#2	Resp#1	Resp#2	ng/ml	ng/ml
42)	L9 AR-1268-2	9.087	7.912	55784	937199	0.477	0.433
43)	L9 AR-1268-3	9.328	8.113	149456	1052786	1.545	0.656 #
44)	L9 AR-1268-4	9.743	8.425	36566	606634	0.842	0.914
45)	L9 AR-1268-5	10.225	8.736	90055	1387350	0.313	0.275

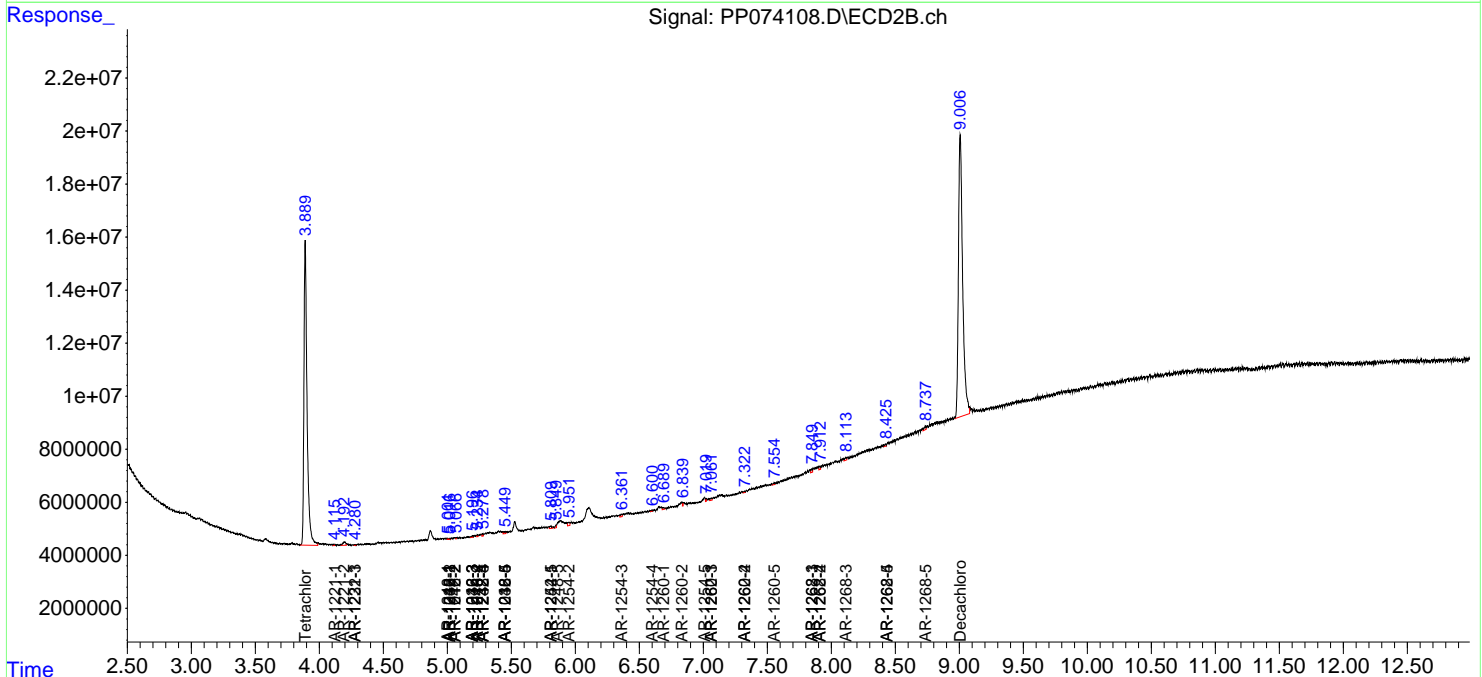
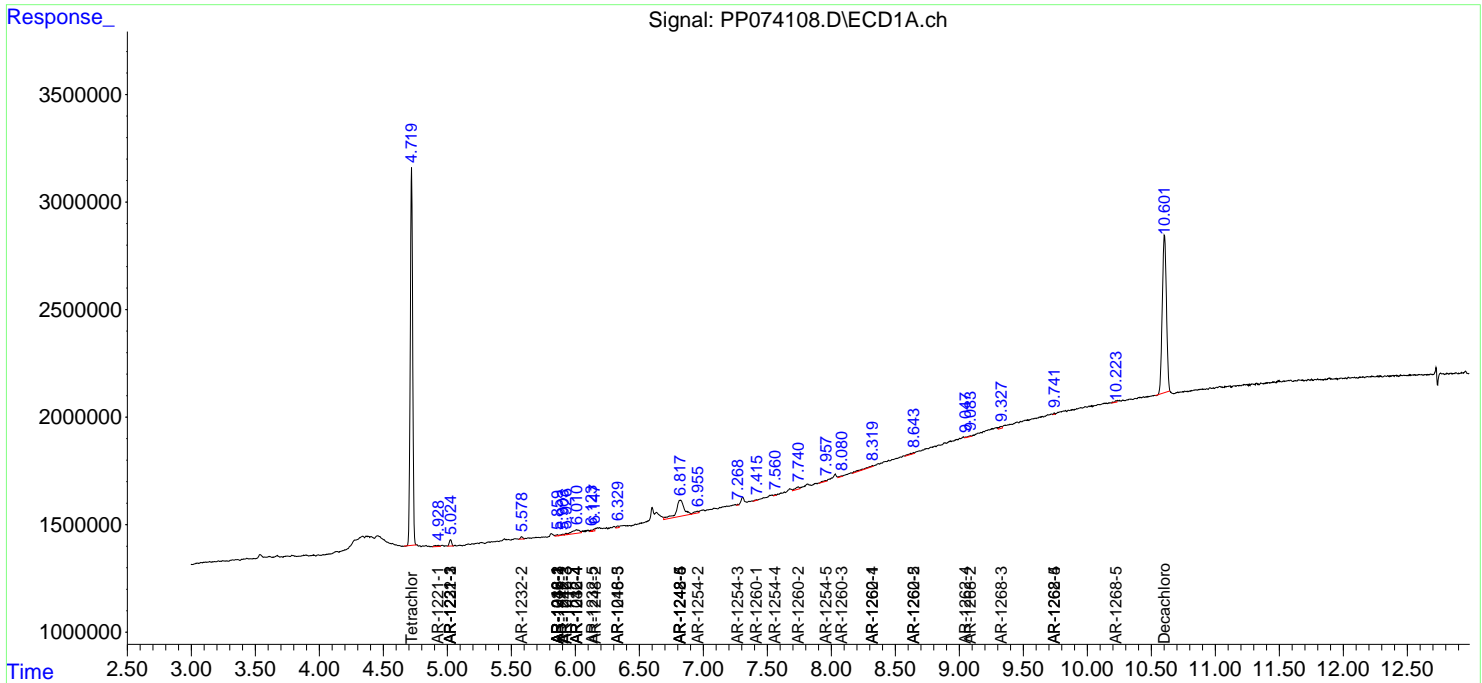
(f)=RT Delta > 1/2 Window (#)=Amounts differ by > 25% (m)=manual int.

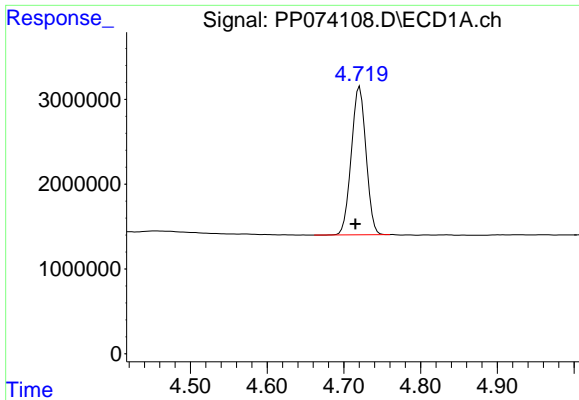
Data Path : Z:\pestpcbsrv\HPCHEM1\ECD_P\Data\PP072925\
 Data File : PP074108.D
 Signal(s) : Signal #1: ECD1A.ch Signal #2: ECD2B.ch
 Acq On : 29 Jul 2025 16:34
 Operator : YP\AJ
 Sample : PB169036BL
 Misc :
 ALS Vial : 17 Sample Multiplier: 1

Instrument :
 ECD_P
ClientSampleId :
 PB169036BL

Integration File signal 1: autoint1.e
 Integration File signal 2: autoint2.e
 Quant Time: Jul 30 08:45:01 2025
 Quant Method : Z:\pestpcbsrv\HPCHEM1\ECD_P\methods\PP072525.M
 Quant Title : GC EXTRACTABLES
 QLast Update : Mon Jul 28 18:16:14 2025
 Response via : Initial Calibration
 Integrator: ChemStation

Volume Inj. : 2 µl
 Signal #1 Phase : ZB-MR1 Signal #2 Phase: ZB-MR2
 Signal #1 Info : 30Mx0.32mmx 0.50µ Signal #2 Info : 30M x 0.32mm x 0.25µm

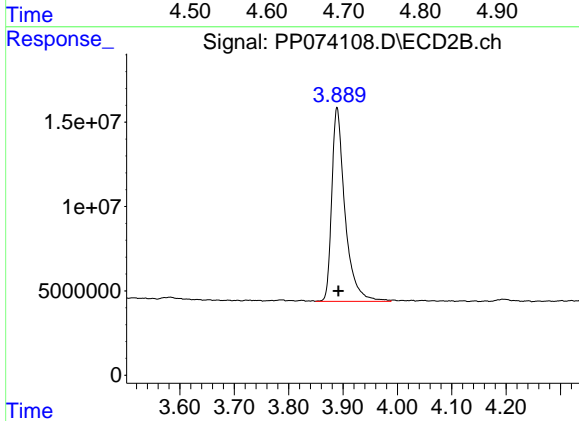




#1 Tetrachloro-m-xylene

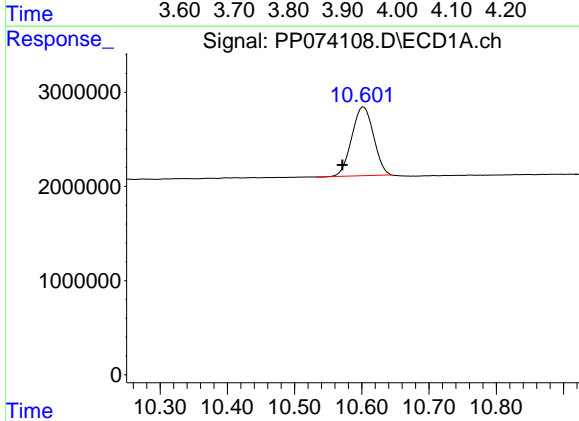
R.T.: 4.721 min
 Delta R.T.: 0.006 min
 Response: 23403169
 Conc: 22.40 ng/ml

Instrument :
 ECD_P
 ClientSampleId :
 PB169036BL



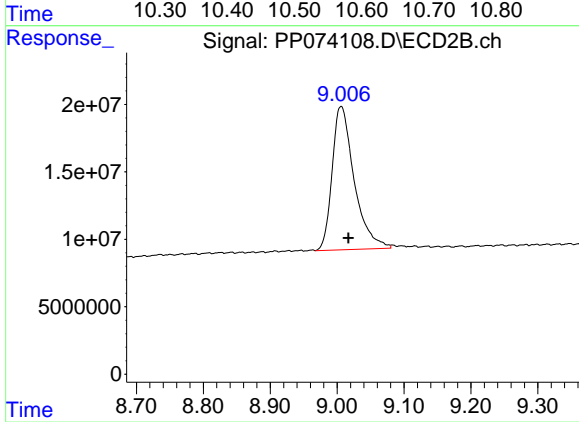
#1 Tetrachloro-m-xylene

R.T.: 3.889 min
 Delta R.T.: -0.003 min
 Response: 194421280
 Conc: 21.11 ng/ml



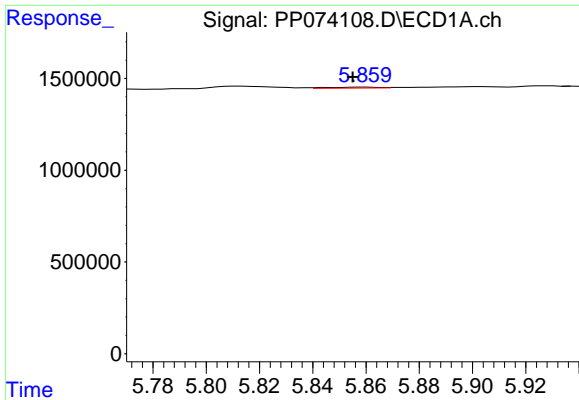
#2 Decachlorobiphenyl

R.T.: 10.603 min
 Delta R.T.: 0.032 min
 Response: 16508333
 Conc: 24.58 ng/ml



#2 Decachlorobiphenyl

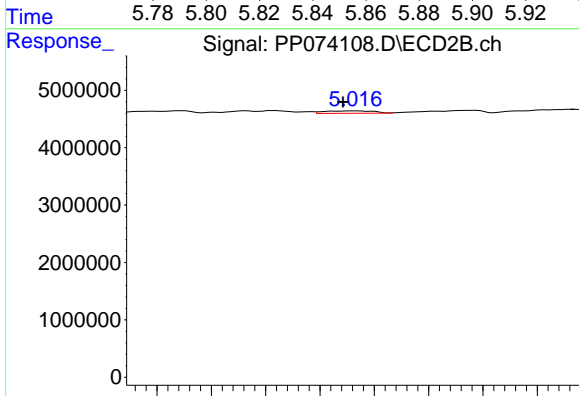
R.T.: 9.006 min
 Delta R.T.: -0.010 min
 Response: 243229757
 Conc: 21.39 ng/ml



#3 AR-1016-1

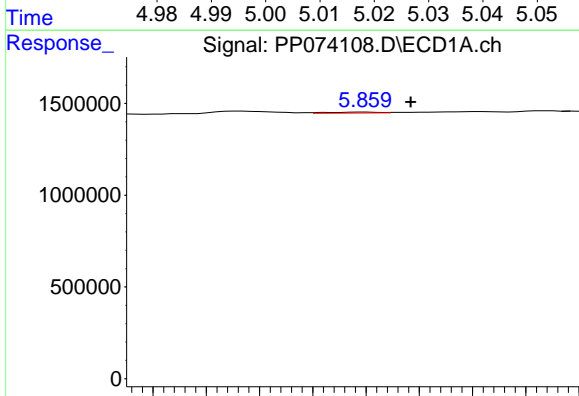
R.T.: 5.860 min
 Delta R.T.: 0.005 min
 Response: 71642
 Conc: 1.95 ng/ml

Instrument :
 ECD_P
 ClientSampleId :
 PB169036BL



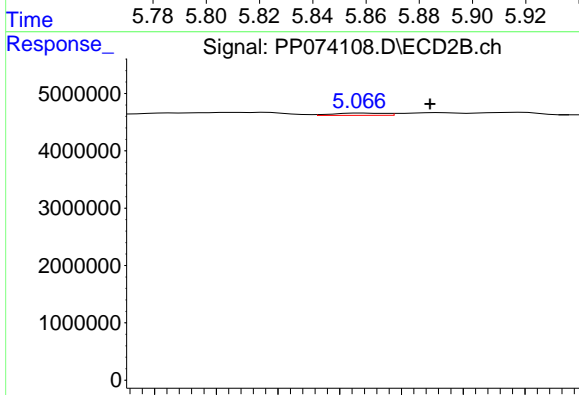
#3 AR-1016-1

R.T.: 5.016 min
 Delta R.T.: 0.002 min
 Response: 263275
 Conc: 0.31 ng/ml



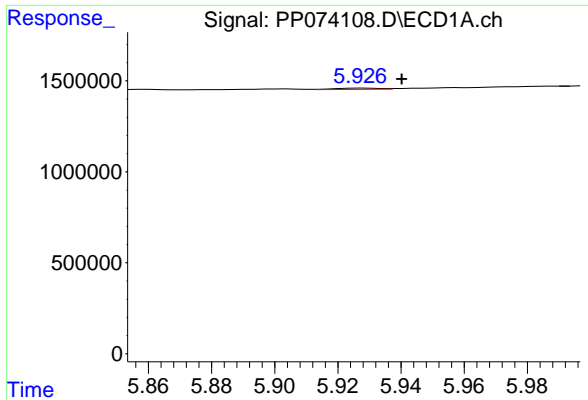
#4 AR-1016-2

R.T.: 5.860 min
 Delta R.T.: -0.017 min
 Response: 71642
 Conc: 1.31 ng/ml



#4 AR-1016-2

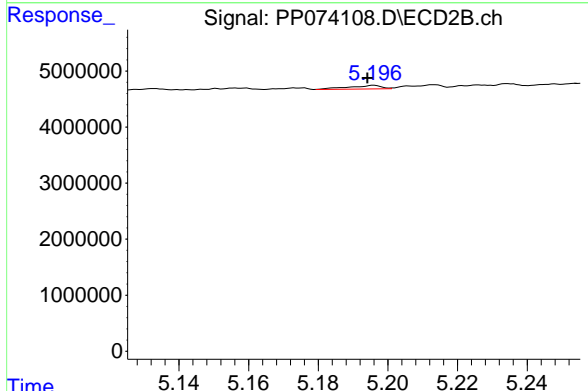
R.T.: 5.067 min
 Delta R.T.: -0.005 min
 Response: 112327
 Conc: 0.30 ng/ml



#5 AR-1016-3

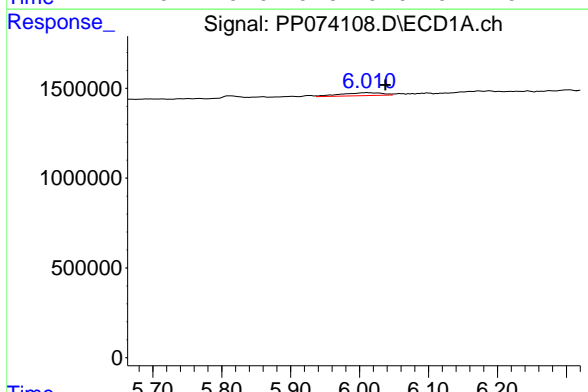
R.T.: 5.928 min
 Delta R.T.: -0.012 min
 Response: 67795
 Conc: 1.96 ng/ml

Instrument :
 ECD_P
 ClientSampleId :
 PB169036BL



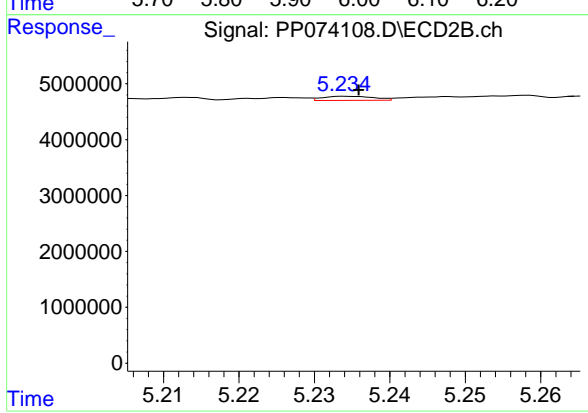
#5 AR-1016-3

R.T.: 5.196 min
 Delta R.T.: 0.002 min
 Response: 426488
 Conc: 1.94 ng/ml



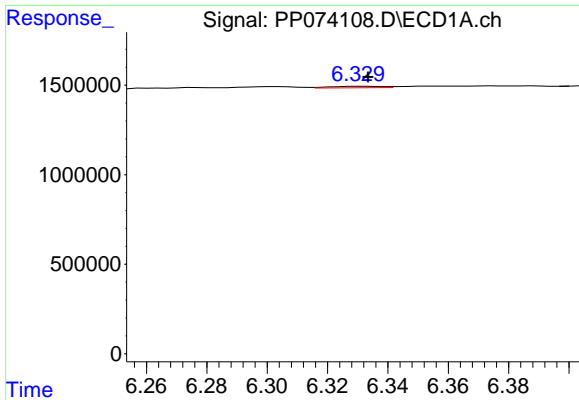
#6 AR-1016-4

R.T.: 6.011 min
 Delta R.T.: -0.027 min
 Response: 672423
 Conc: 24.28 ng/ml



#6 AR-1016-4

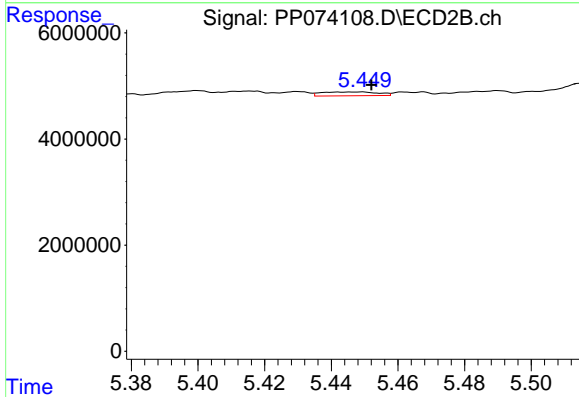
R.T.: 5.234 min
 Delta R.T.: -0.002 min
 Response: 351797
 Conc: 1.68 ng/ml



#7 AR-1016-5

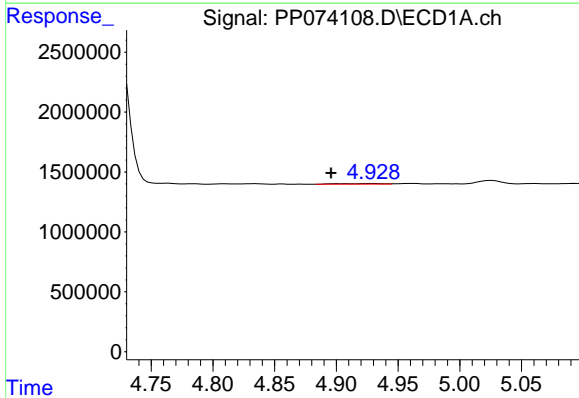
R.T.: 6.331 min
 Delta R.T.: -0.002 min
 Response: 98259
 Conc: 3.65 ng/ml

Instrument :
 ECD_P
 ClientSampleId :
 PB169036BL



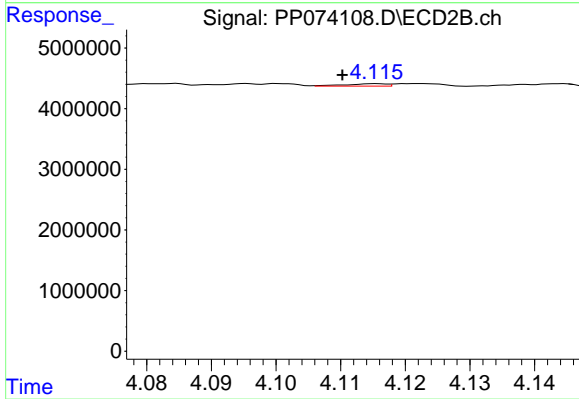
#7 AR-1016-5

R.T.: 5.449 min
 Delta R.T.: -0.003 min
 Response: 839155
 Conc: 3.64 ng/ml



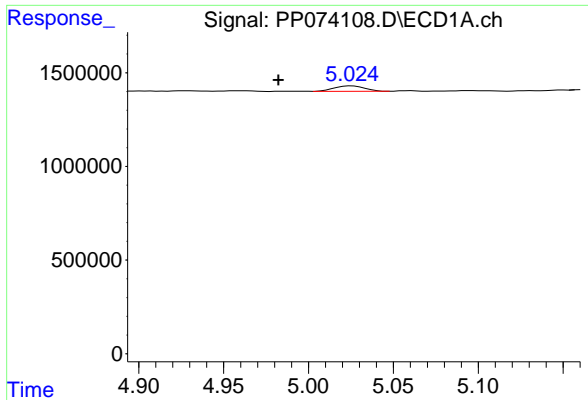
#8 AR-1221-1

R.T.: 4.929 min
 Delta R.T.: 0.033 min
 Response: 138571
 Conc: 8.85 ng/ml



#8 AR-1221-1

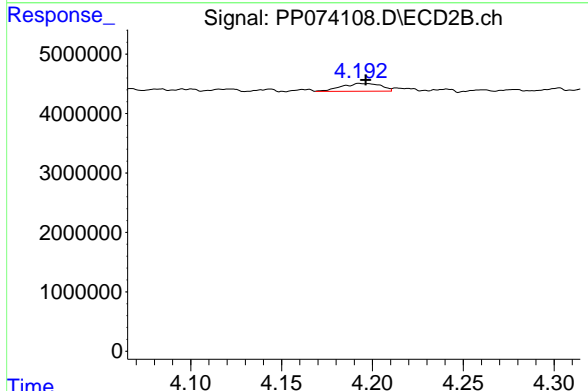
R.T.: 4.115 min
 Delta R.T.: 0.005 min
 Response: 184592
 Conc: 1.65 ng/ml



#9 AR-1221-2

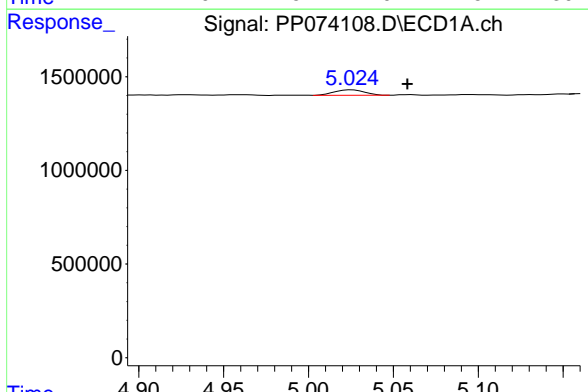
R.T.: 5.026 min
 Delta R.T.: 0.043 min
 Response: 368083
 Conc: 30.98 ng/ml

Instrument :
 ECD_P
 ClientSampleId :
 PB169036BL



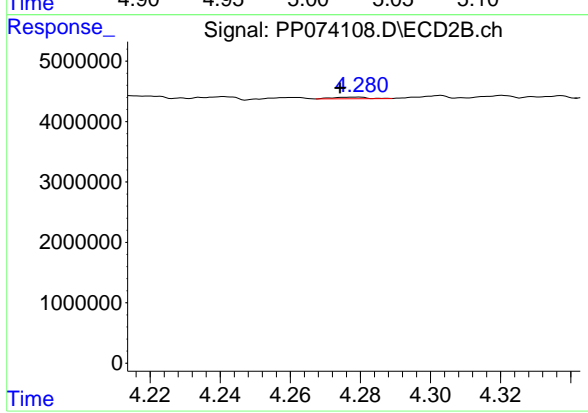
#9 AR-1221-2

R.T.: 4.193 min
 Delta R.T.: -0.004 min
 Response: 1981343
 Conc: 25.87 ng/ml



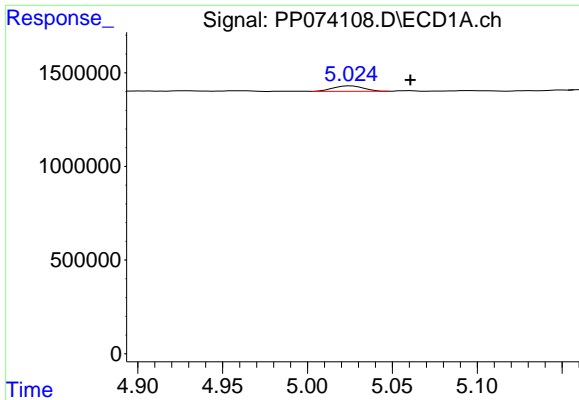
#10 AR-1221-3

R.T.: 5.026 min
 Delta R.T.: -0.033 min
 Response: 368083
 Conc: 10.88 ng/ml



#10 AR-1221-3

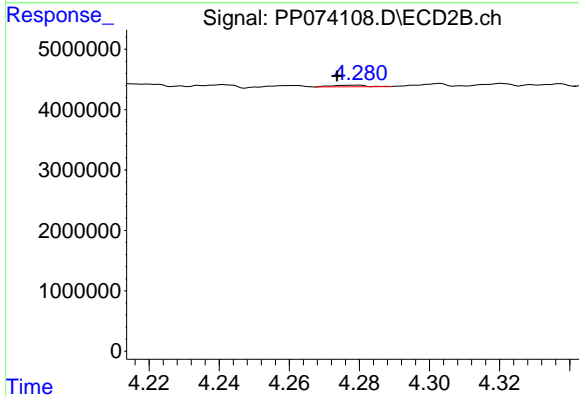
R.T.: 4.280 min
 Delta R.T.: 0.006 min
 Response: 182498
 Conc: 0.63 ng/ml



#11 AR-1232-1

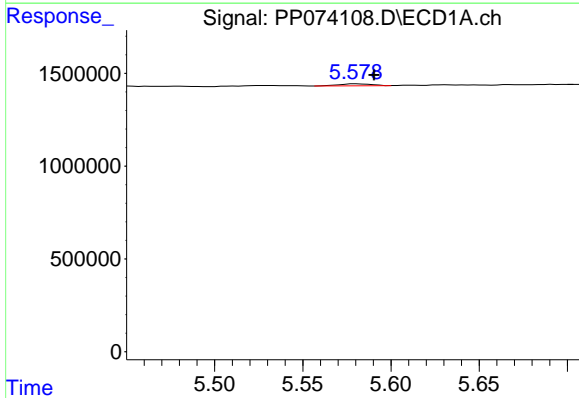
R.T.: 5.026 min
 Delta R.T.: -0.035 min
 Response: 368083
 Conc: 13.29 ng/ml

Instrument :
 ECD_P
 ClientSampleId :
 PB169036BL



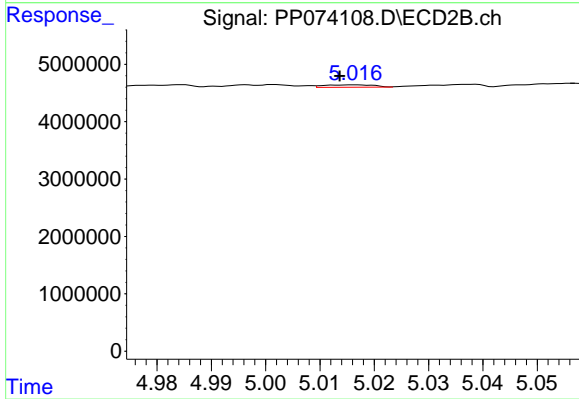
#11 AR-1232-1

R.T.: 4.280 min
 Delta R.T.: 0.006 min
 Response: 182498
 Conc: 0.80 ng/ml



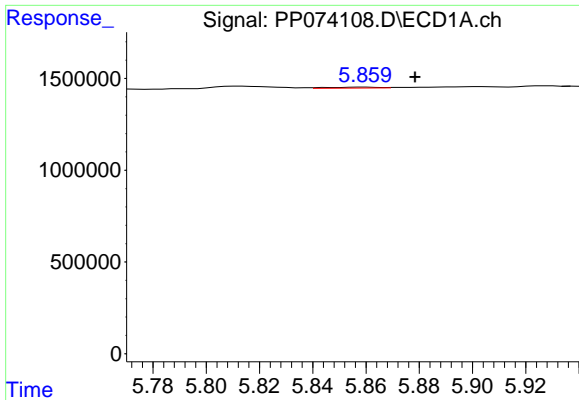
#12 AR-1232-2

R.T.: 5.580 min
 Delta R.T.: -0.010 min
 Response: 138007
 Conc: 9.93 ng/ml



#12 AR-1232-2

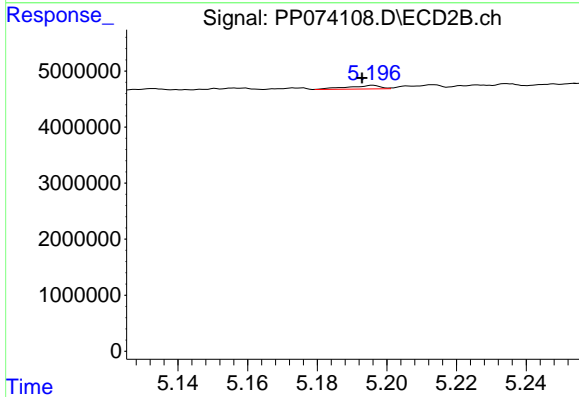
R.T.: 5.016 min
 Delta R.T.: 0.003 min
 Response: 263275
 Conc: 0.87 ng/ml



#13 AR-1232-3

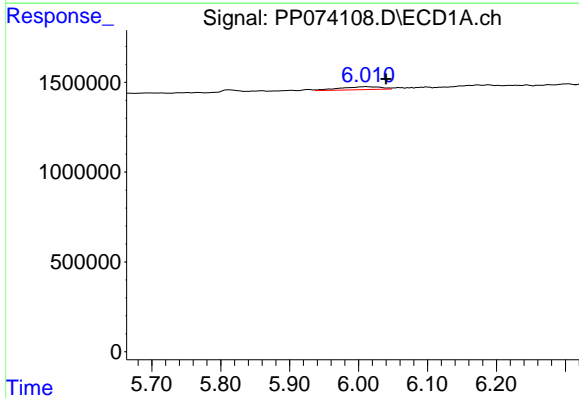
R.T.: 5.860 min
 Delta R.T.: -0.019 min
 Response: 71642
 Conc: 2.64 ng/ml

Instrument :
 ECD_P
 ClientSampleId :
 PB169036BL



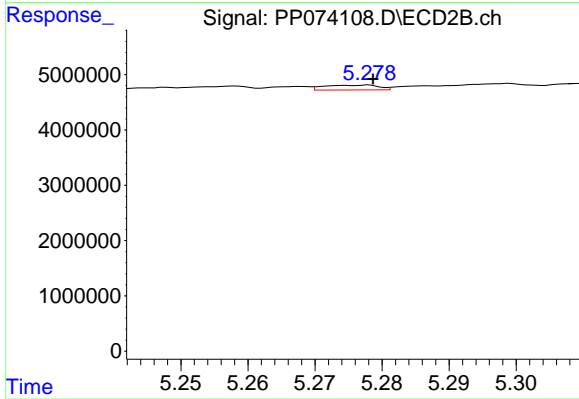
#13 AR-1232-3

R.T.: 5.196 min
 Delta R.T.: 0.003 min
 Response: 426488
 Conc: 4.15 ng/ml



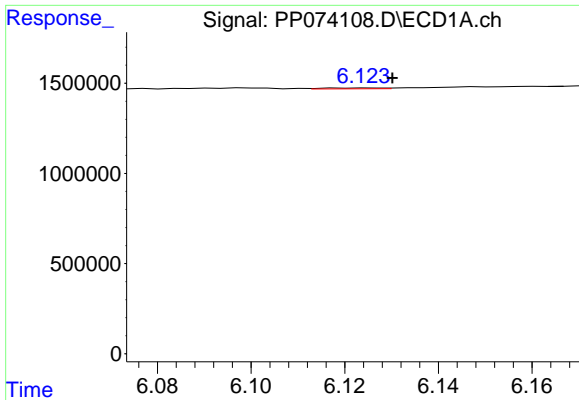
#14 AR-1232-4

R.T.: 6.011 min
 Delta R.T.: -0.029 min
 Response: 672423
 Conc: 48.40 ng/ml



#14 AR-1232-4

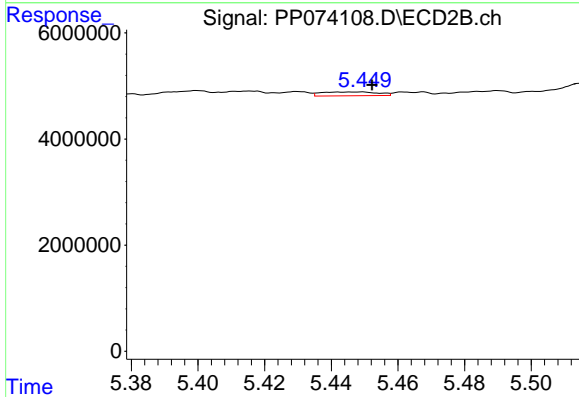
R.T.: 5.278 min
 Delta R.T.: 0.000 min
 Response: 488702
 Conc: 4.63 ng/ml



#15 AR-1232-5

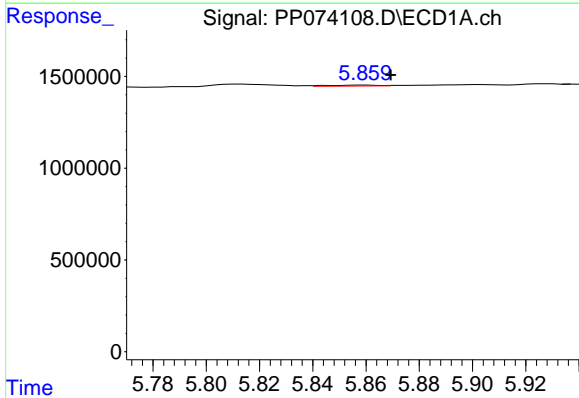
R.T.: 6.126 min
 Delta R.T.: -0.005 min
 Response: 42025
 Conc: 4.30 ng/ml

Instrument :
 ECD_P
 ClientSampleId :
 PB169036BL



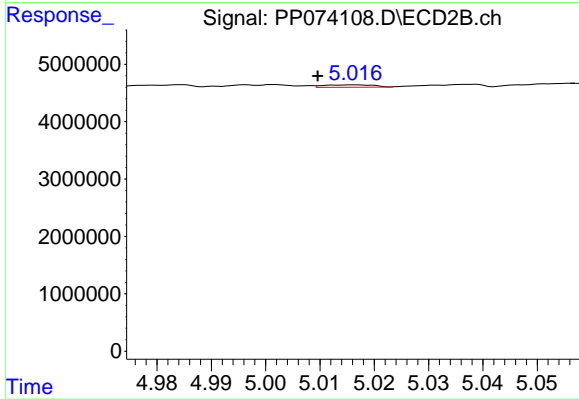
#15 AR-1232-5

R.T.: 5.449 min
 Delta R.T.: -0.003 min
 Response: 839155
 Conc: 8.69 ng/ml



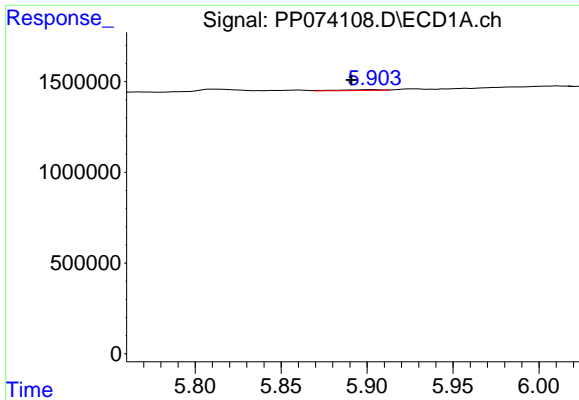
#16 AR-1242-1

R.T.: 5.860 min
 Delta R.T.: -0.009 min
 Response: 71642
 Conc: 2.17 ng/ml



#16 AR-1242-1

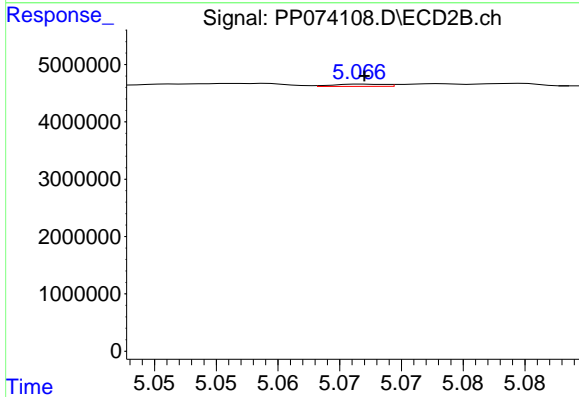
R.T.: 5.016 min
 Delta R.T.: 0.007 min
 Response: 263275
 Conc: 0.33 ng/ml



#17 AR-1242-2

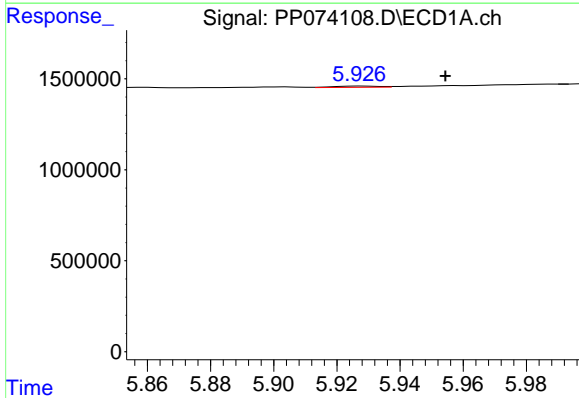
R.T.: 5.904 min
 Delta R.T.: 0.013 min
 Response: 77427
 Conc: 1.60 ng/ml

Instrument :
 ECD_P
 ClientSampleId :
 PB169036BL



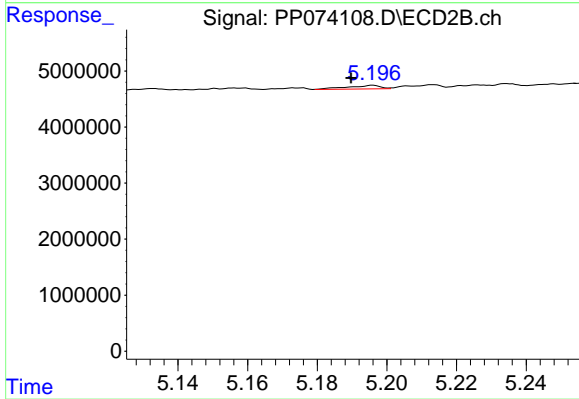
#17 AR-1242-2

R.T.: 5.067 min
 Delta R.T.: 0.000 min
 Response: 112327
 Conc: 0.33 ng/ml



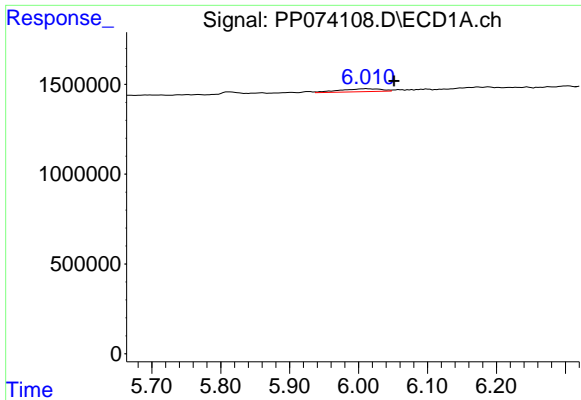
#18 AR-1242-3

R.T.: 5.928 min
 Delta R.T.: -0.027 min
 Response: 67795
 Conc: 2.22 ng/ml



#18 AR-1242-3

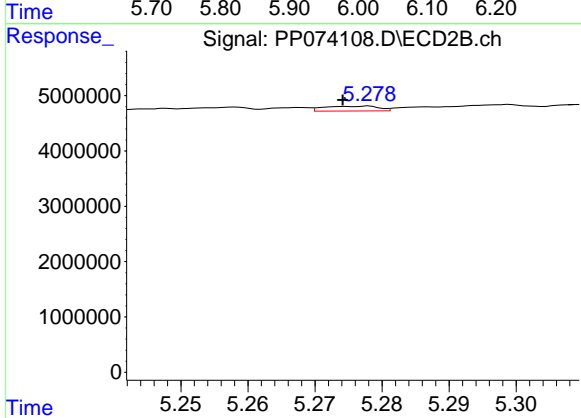
R.T.: 5.196 min
 Delta R.T.: 0.006 min
 Response: 426488
 Conc: 2.16 ng/ml



#19 AR-1242-4

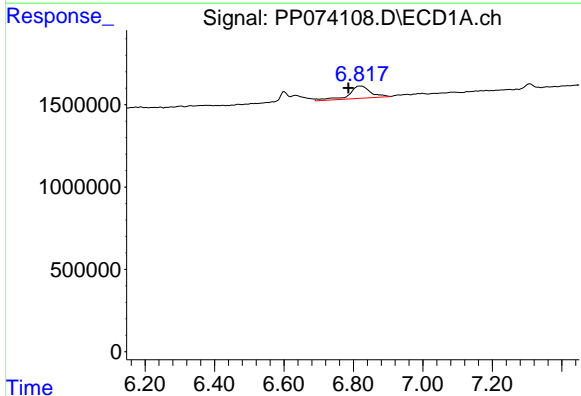
R.T.: 6.011 min
 Delta R.T.: -0.040 min
 Response: 672423
 Conc: 27.79 ng/ml

Instrument :
 ECD_P
 ClientSampleId :
 PB169036BL



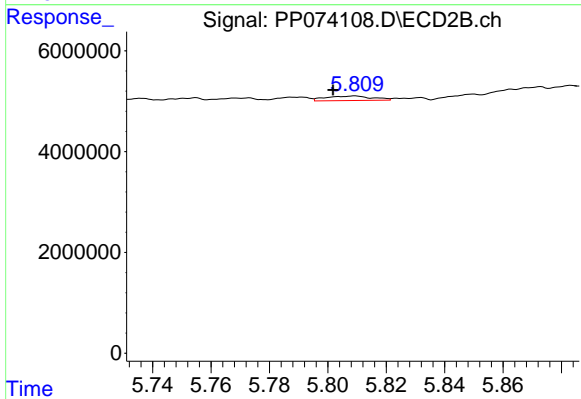
#19 AR-1242-4

R.T.: 5.278 min
 Delta R.T.: 0.004 min
 Response: 488702
 Conc: 2.03 ng/ml



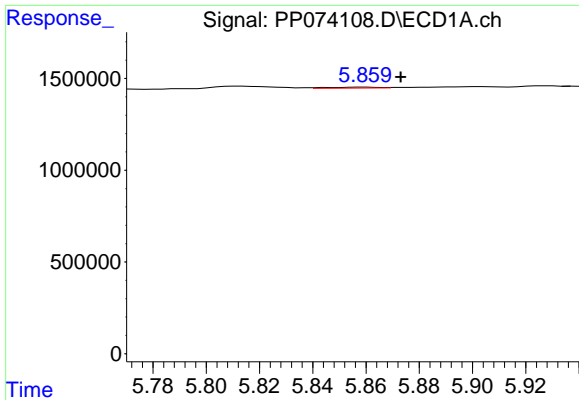
#20 AR-1242-5

R.T.: 6.818 min
 Delta R.T.: 0.033 min
 Response: 3255005
 Conc: 106.45 ng/ml



#20 AR-1242-5

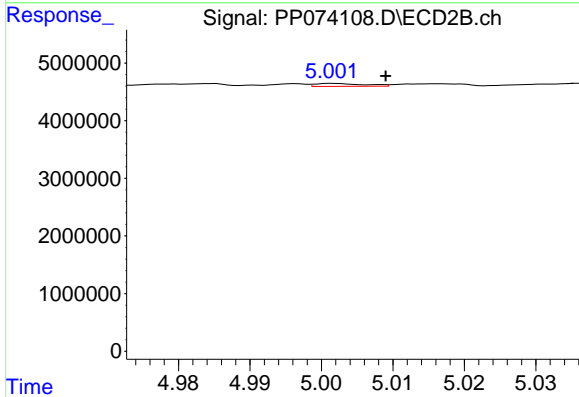
R.T.: 5.809 min
 Delta R.T.: 0.008 min
 Response: 1002321
 Conc: 3.51 ng/ml



#21 AR-1248-1

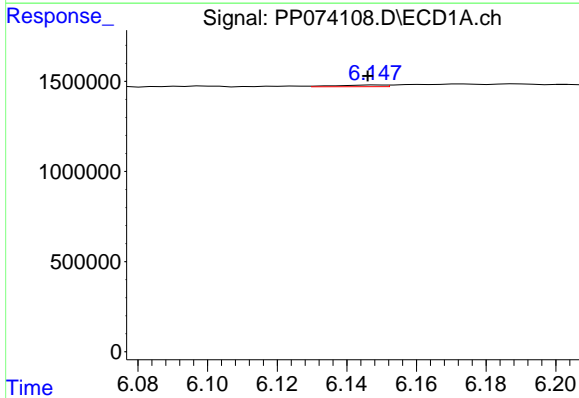
R.T.: 5.860 min
 Delta R.T.: -0.013 min
 Response: 71642
 Conc: 2.66 ng/ml

Instrument :
 ECD_P
 ClientSampleId :
 PB169036BL



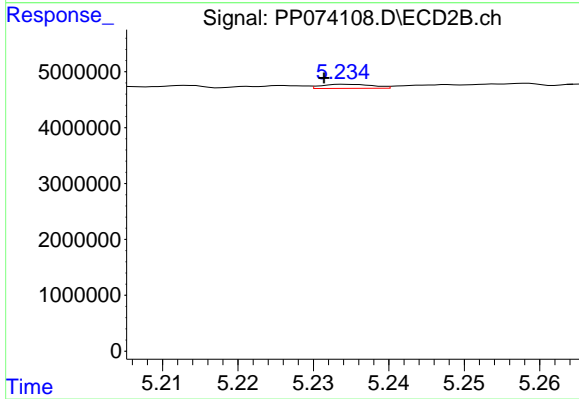
#21 AR-1248-1

R.T.: 5.002 min
 Delta R.T.: -0.007 min
 Response: 242463
 Conc: 0.48 ng/ml



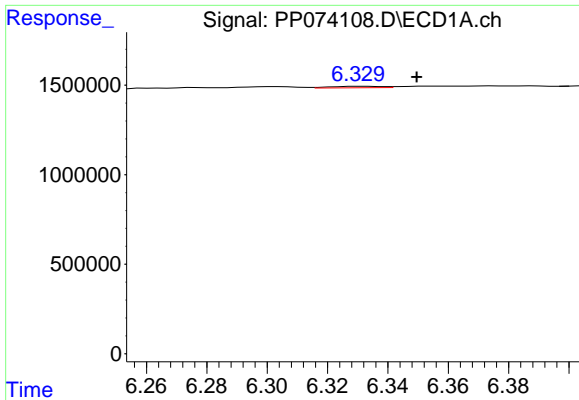
#22 AR-1248-2

R.T.: 6.149 min
 Delta R.T.: 0.003 min
 Response: 89711
 Conc: 2.41 ng/ml



#22 AR-1248-2

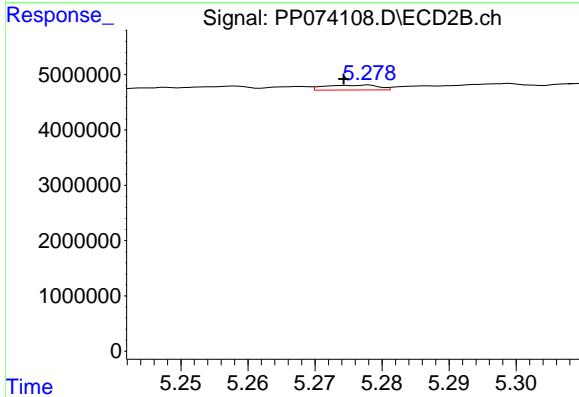
R.T.: 5.234 min
 Delta R.T.: 0.003 min
 Response: 351797
 Conc: 1.13 ng/ml



#23 AR-1248-3

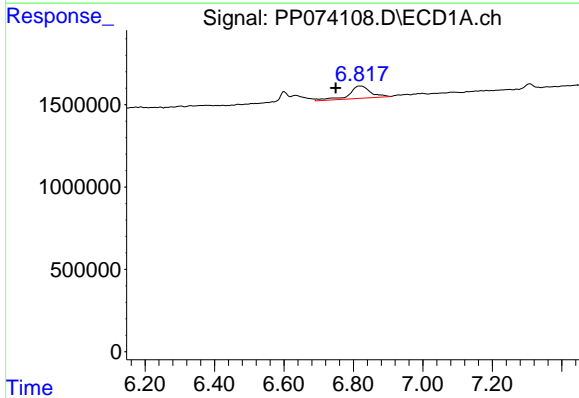
R.T.: 6.331 min
 Delta R.T.: -0.018 min
 Response: 98259
 Conc: 2.39 ng/ml

Instrument :
 ECD_P
 ClientSampleId :
 PB169036BL



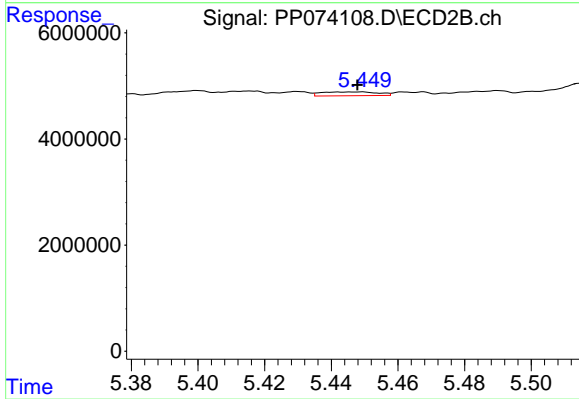
#23 AR-1248-3

R.T.: 5.278 min
 Delta R.T.: 0.004 min
 Response: 488702
 Conc: 1.41 ng/ml



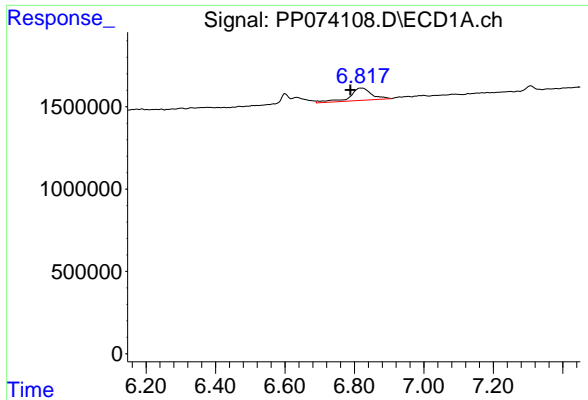
#24 AR-1248-4

R.T.: 6.818 min
 Delta R.T.: 0.069 min
 Response: 3255005
 Conc: 69.55 ng/ml



#24 AR-1248-4

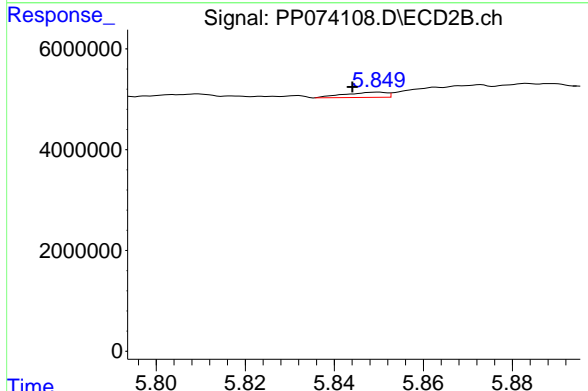
R.T.: 5.449 min
 Delta R.T.: 0.002 min
 Response: 839155
 Conc: 2.34 ng/ml



#25 AR-1248-5

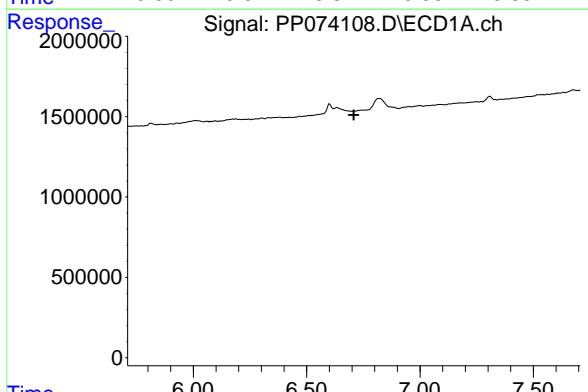
R.T.: 6.818 min
 Delta R.T.: 0.030 min
 Response: 3255005
 Conc: 60.64 ng/ml

Instrument :
 ECD_P
 ClientSampleId :
 PB169036BL



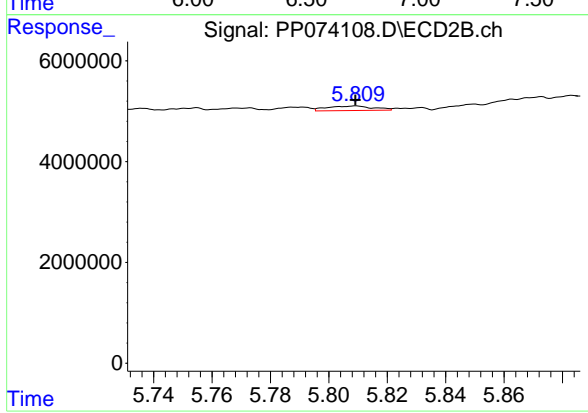
#25 AR-1248-5

R.T.: 5.850 min
 Delta R.T.: 0.006 min
 Response: 668467
 Conc: 1.12 ng/ml



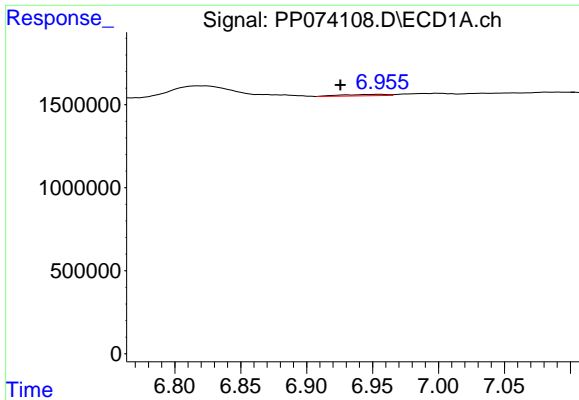
#26 AR-1254-1

R.T.: 0.000 min
 Exp R.T. : 6.708 min
 Response: 0
 Conc: N.D.



#26 AR-1254-1

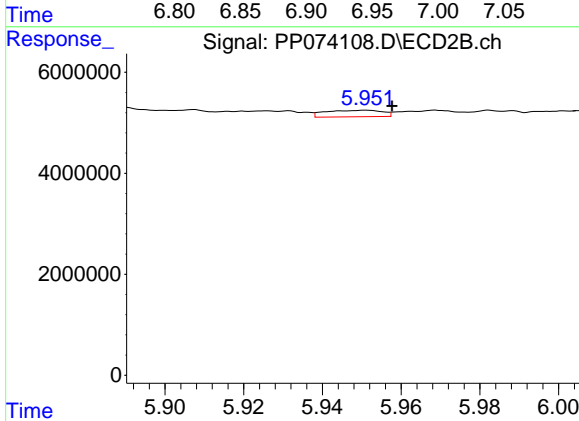
R.T.: 5.809 min
 Delta R.T.: 0.000 min
 Response: 1002321
 Conc: 1.43 ng/ml



#27 AR-1254-2

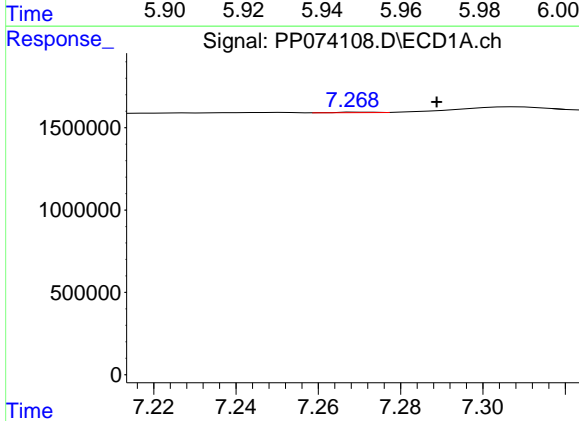
R.T.: 6.956 min
 Delta R.T.: 0.031 min
 Response: 205195
 Conc: 2.93 ng/ml

Instrument :
 ECD_P
 ClientSampleId :
 PB169036BL



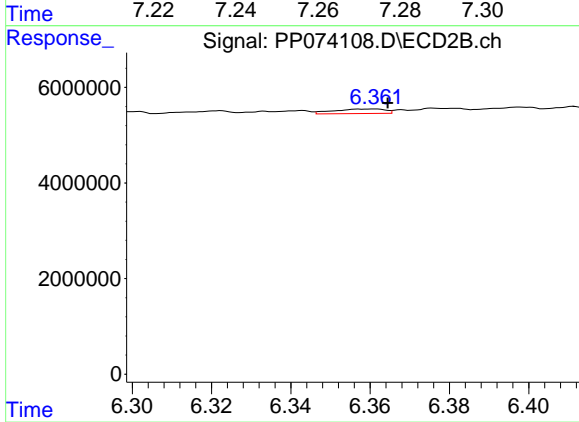
#27 AR-1254-2

R.T.: 5.951 min
 Delta R.T.: -0.007 min
 Response: 1285876
 Conc: 2.40 ng/ml



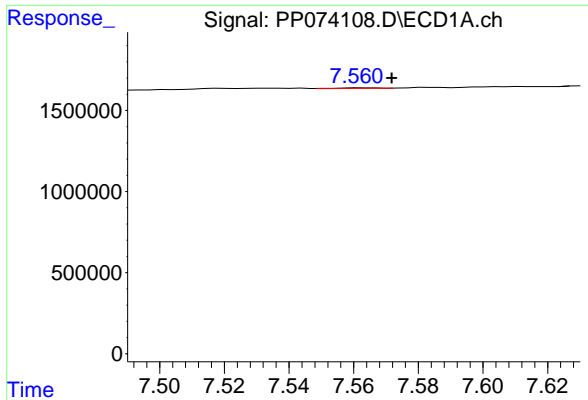
#28 AR-1254-3

R.T.: 7.270 min
 Delta R.T.: -0.019 min
 Response: 18060
 Conc: 0.25 ng/ml



#28 AR-1254-3

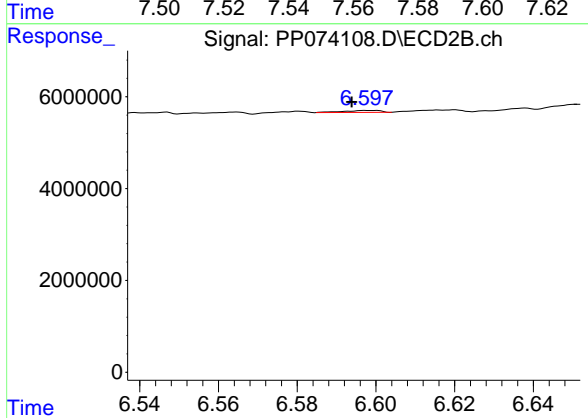
R.T.: 6.361 min
 Delta R.T.: -0.003 min
 Response: 851990
 Conc: 0.97 ng/ml



#29 AR-1254-4

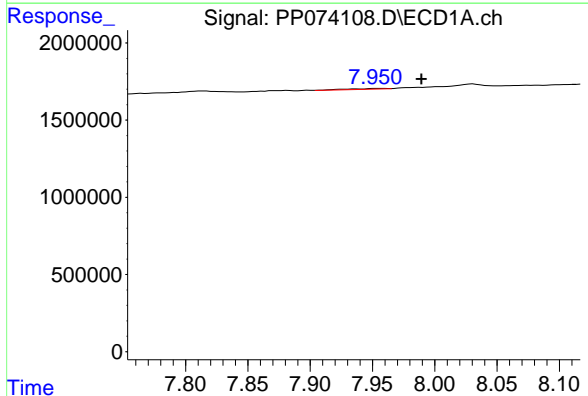
R.T.: 7.562 min
 Delta R.T.: -0.010 min
 Response: 32310
 Conc: 0.62 ng/ml

Instrument :
 ECD_P
 ClientSampleId :
 PB169036BL



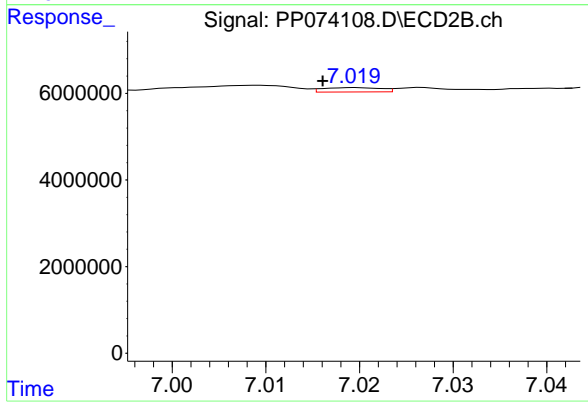
#29 AR-1254-4

R.T.: 6.598 min
 Delta R.T.: 0.004 min
 Response: 283748
 Conc: 0.42 ng/ml



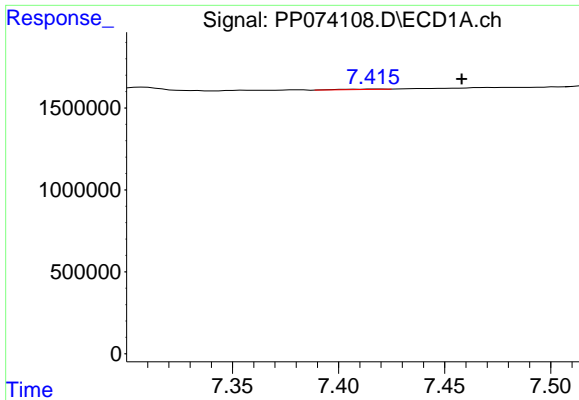
#30 AR-1254-5

R.T.: 7.958 min
 Delta R.T.: -0.031 min
 Response: 100964
 Conc: 1.67 ng/ml



#30 AR-1254-5

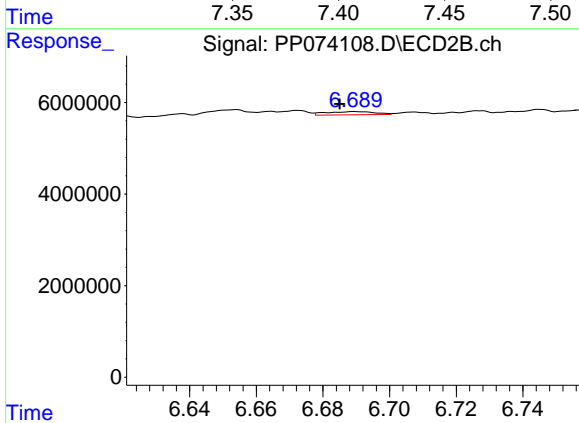
R.T.: 7.019 min
 Delta R.T.: 0.003 min
 Response: 436904
 Conc: 0.55 ng/ml



#31 AR-1260-1

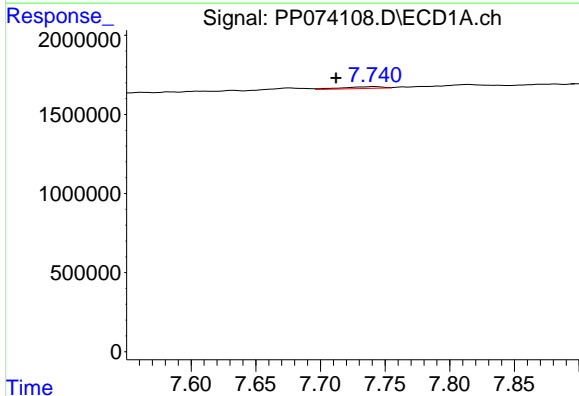
R.T.: 7.417 min
 Delta R.T.: -0.041 min
 Response: 41219
 Conc: 0.96 ng/ml

Instrument :
 ECD_P
 ClientSampleId :
 PB169036BL



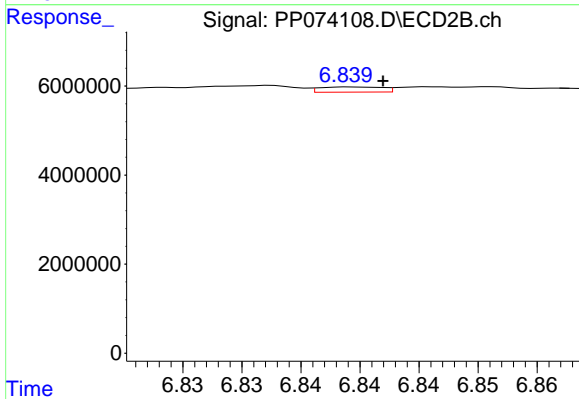
#31 AR-1260-1

R.T.: 6.690 min
 Delta R.T.: 0.005 min
 Response: 708205
 Conc: 0.90 ng/ml



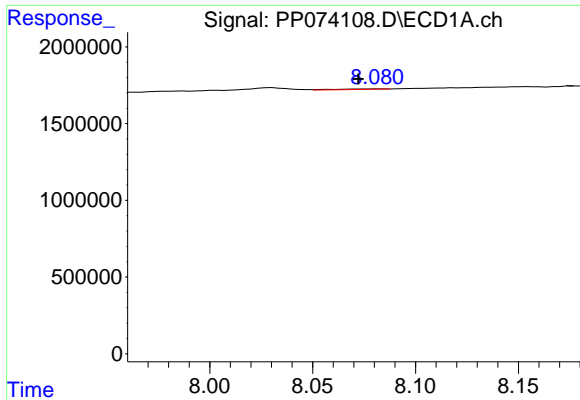
#32 AR-1260-2

R.T.: 7.743 min
 Delta R.T.: 0.031 min
 Response: 246224
 Conc: 4.50 ng/ml



#32 AR-1260-2

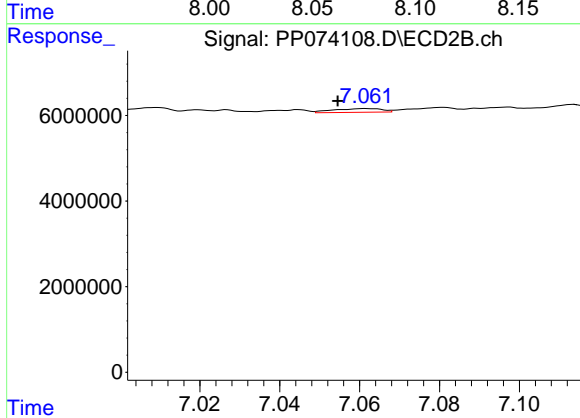
R.T.: 6.839 min
 Delta R.T.: -0.003 min
 Response: 424447
 Conc: 0.56 ng/ml



#33 AR-1260-3

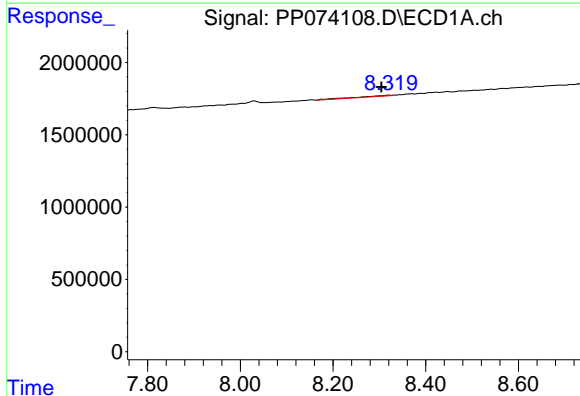
R.T.: 8.083 min
 Delta R.T.: 0.010 min
 Response: 58726
 Conc: 1.55 ng/ml

Instrument :
 ECD_P
 ClientSampleId :
 PB169036BL



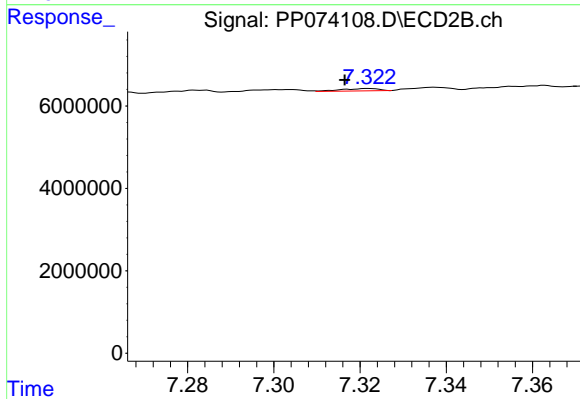
#33 AR-1260-3

R.T.: 7.062 min
 Delta R.T.: 0.007 min
 Response: 740117
 Conc: 0.93 ng/ml



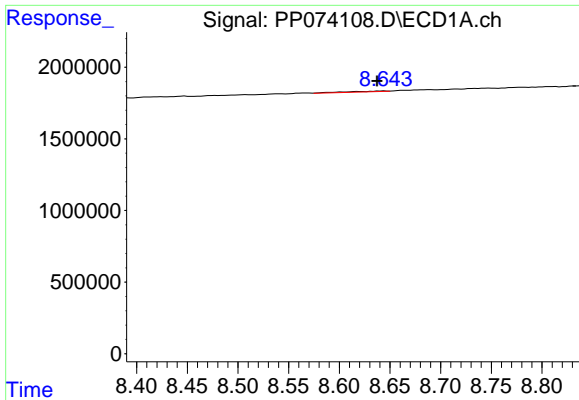
#34 AR-1260-4

R.T.: 8.321 min
 Delta R.T.: 0.016 min
 Response: 304995
 Conc: 6.38 ng/ml



#34 AR-1260-4

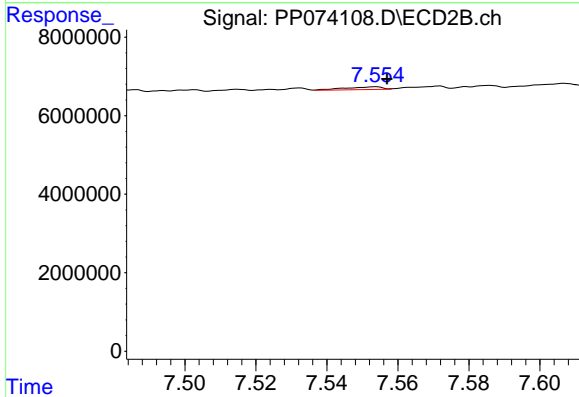
R.T.: 7.322 min
 Delta R.T.: 0.006 min
 Response: 358262
 Conc: 0.62 ng/ml



#35 AR-1260-5

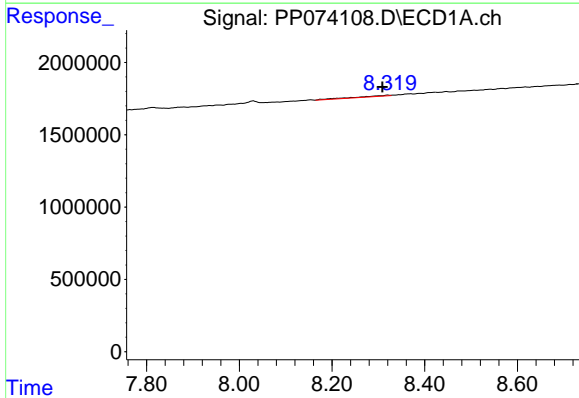
R.T.: 8.644 min
 Delta R.T.: 0.007 min
 Response: 141661
 Conc: 1.66 ng/ml

Instrument :
 ECD_P
 ClientSampleId :
 PB169036BL



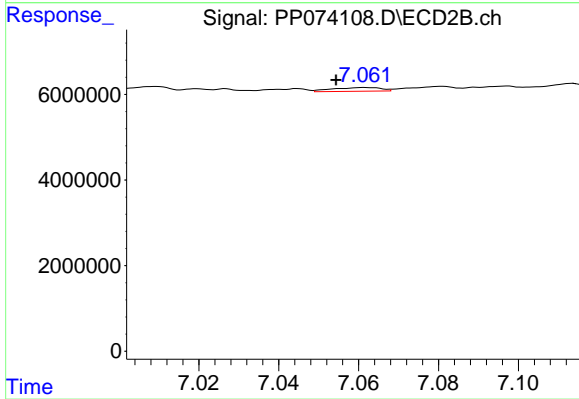
#35 AR-1260-5

R.T.: 7.554 min
 Delta R.T.: -0.003 min
 Response: 500539
 Conc: 0.32 ng/ml



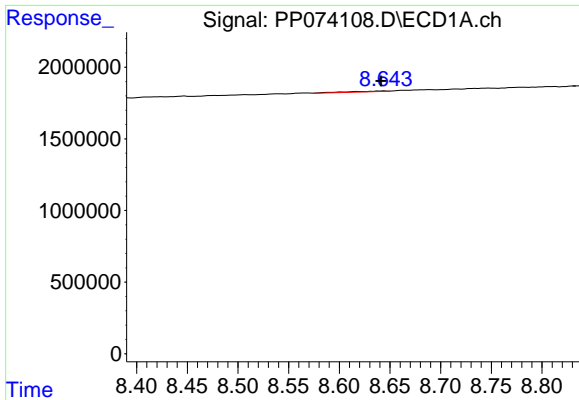
#36 AR-1262-1

R.T.: 8.321 min
 Delta R.T.: 0.012 min
 Response: 304995
 Conc: 4.92 ng/ml



#36 AR-1262-1

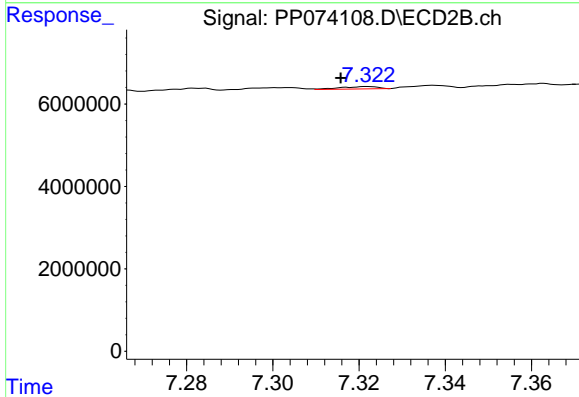
R.T.: 7.062 min
 Delta R.T.: 0.007 min
 Response: 740117
 Conc: 0.63 ng/ml



#37 AR-1262-2

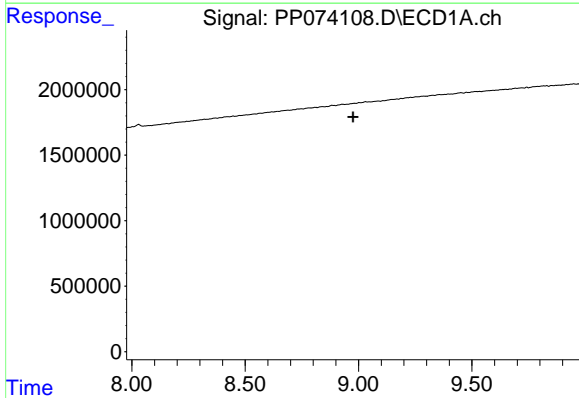
R.T.: 8.644 min
 Delta R.T.: 0.003 min
 Response: 141661
 Conc: 1.28 ng/ml

Instrument :
 ECD_P
 ClientSampleId :
 PB169036BL



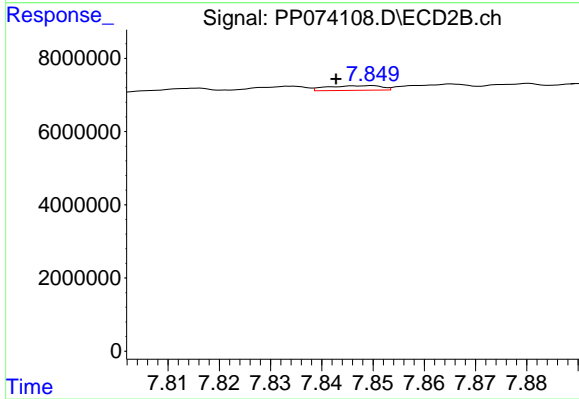
#37 AR-1262-2

R.T.: 7.322 min
 Delta R.T.: 0.006 min
 Response: 358262
 Conc: 0.43 ng/ml



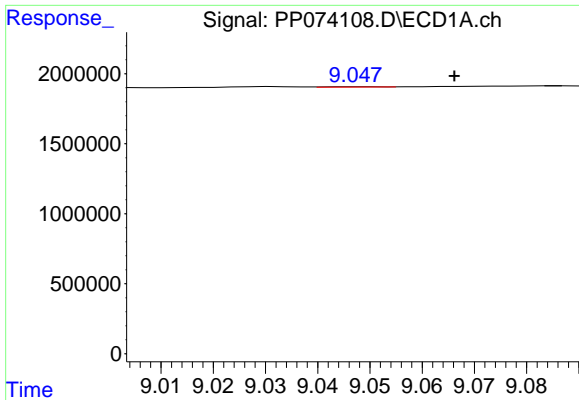
#38 AR-1262-3

R.T.: 9.003 min
 Delta R.T.: 0.027 min
 Response: -33544
 Conc: N.D.



#38 AR-1262-3

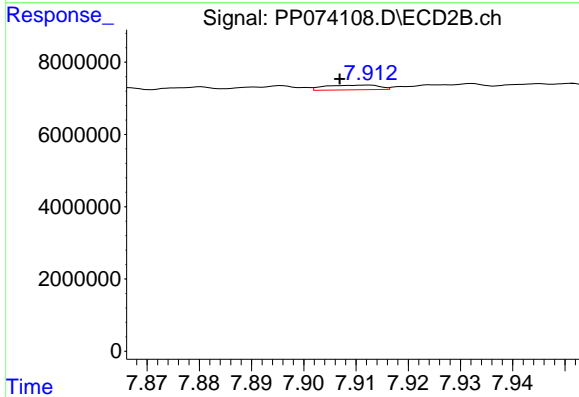
R.T.: 7.850 min
 Delta R.T.: 0.007 min
 Response: 936543
 Conc: 1.21 ng/ml



#39 AR-1262-4

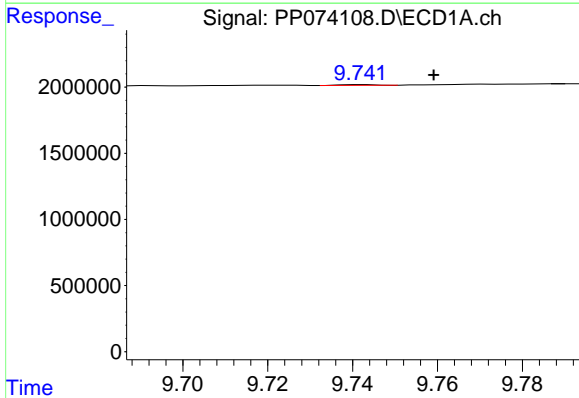
R.T.: 9.049 min
 Delta R.T.: -0.017 min
 Response: 20199
 Conc: 0.35 ng/ml

Instrument :
 ECD_P
 ClientSampleId :
 PB169036BL



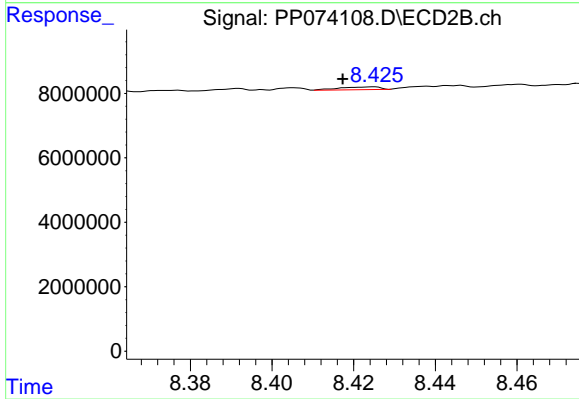
#39 AR-1262-4

R.T.: 7.912 min
 Delta R.T.: 0.006 min
 Response: 937199
 Conc: 0.67 ng/ml



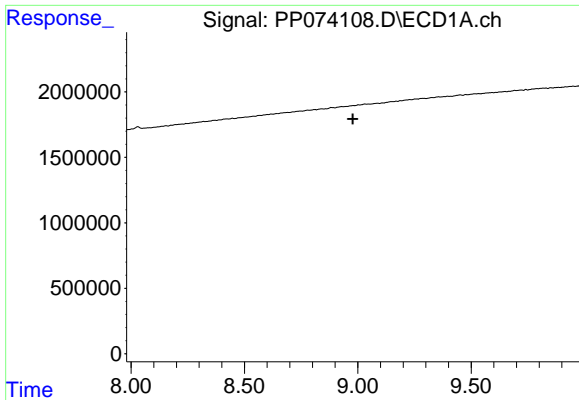
#40 AR-1262-5

R.T.: 9.743 min
 Delta R.T.: -0.017 min
 Response: 36566
 Conc: 0.94 ng/ml



#40 AR-1262-5

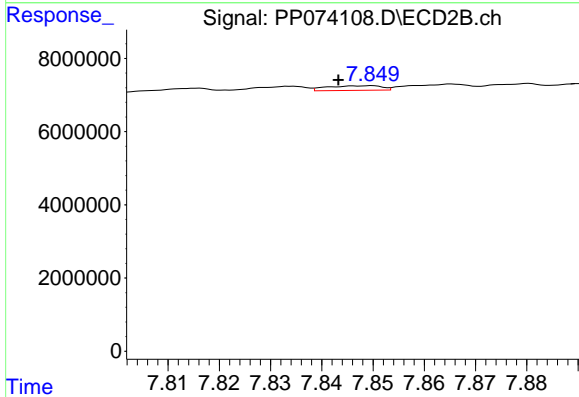
R.T.: 8.425 min
 Delta R.T.: 0.008 min
 Response: 606634
 Conc: 0.96 ng/ml



#41 AR-1268-1

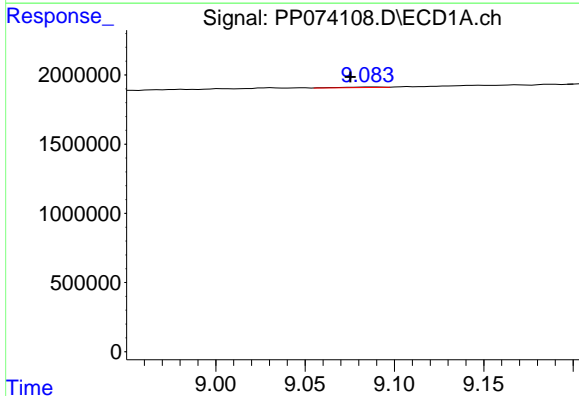
R.T.: 9.003 min
 Delta R.T.: 0.025 min
 Response: -33544
 Conc: N.D.

Instrument :
 ECD_P
 ClientSampleId :
 PB169036BL



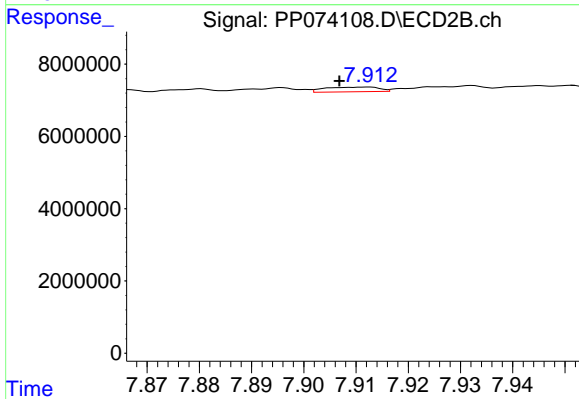
#41 AR-1268-1

R.T.: 7.850 min
 Delta R.T.: 0.007 min
 Response: 936543
 Conc: 0.42 ng/ml



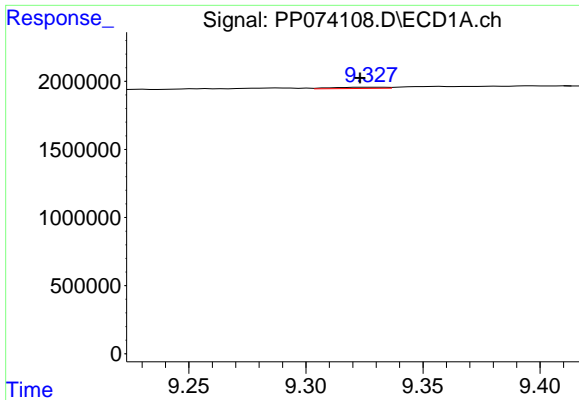
#42 AR-1268-2

R.T.: 9.087 min
 Delta R.T.: 0.012 min
 Response: 55784
 Conc: 0.48 ng/ml



#42 AR-1268-2

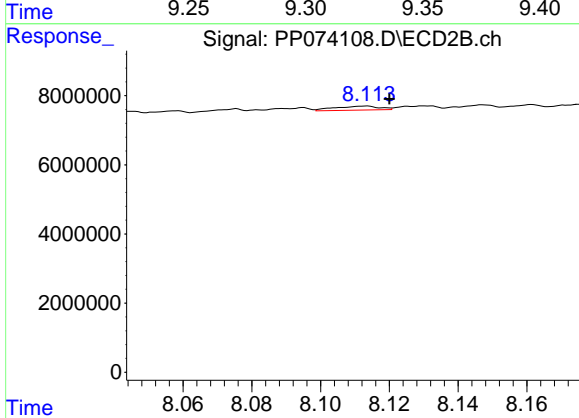
R.T.: 7.912 min
 Delta R.T.: 0.006 min
 Response: 937199
 Conc: 0.43 ng/ml



#43 AR-1268-3

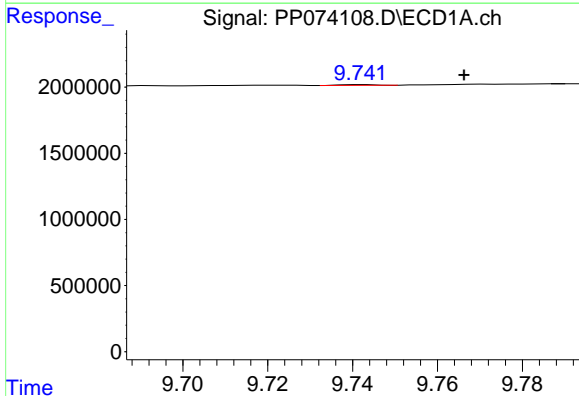
R.T.: 9.328 min
 Delta R.T.: 0.005 min
 Response: 149456
 Conc: 1.54 ng/ml

Instrument :
 ECD_P
 ClientSampleId :
 PB169036BL



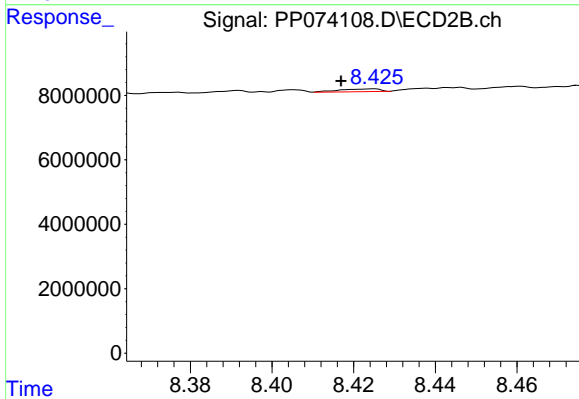
#43 AR-1268-3

R.T.: 8.113 min
 Delta R.T.: -0.007 min
 Response: 1052786
 Conc: 0.66 ng/ml



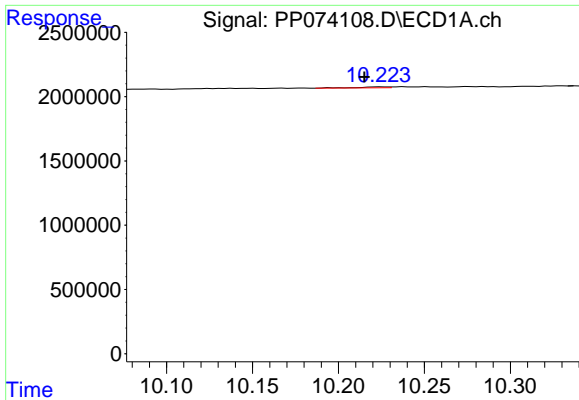
#44 AR-1268-4

R.T.: 9.743 min
 Delta R.T.: -0.024 min
 Response: 36566
 Conc: 0.84 ng/ml



#44 AR-1268-4

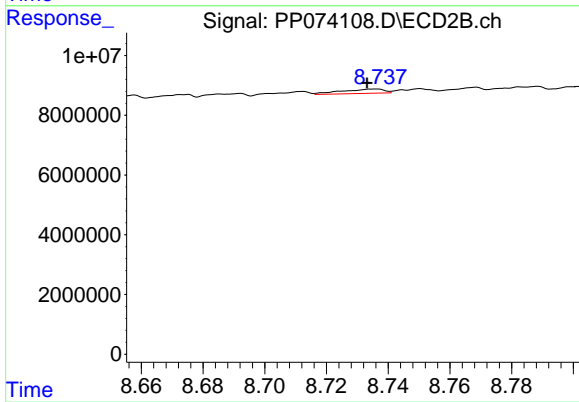
R.T.: 8.425 min
 Delta R.T.: 0.008 min
 Response: 606634
 Conc: 0.91 ng/ml



#45 AR-1268-5

R.T.: 10.225 min
Delta R.T.: 0.010 min
Response: 90055
Conc: 0.31 ng/ml

Instrument :
ECD_P
ClientSampleId :
PB169036BL



#45 AR-1268-5

R.T.: 8.736 min
Delta R.T.: 0.003 min
Response: 1387350
Conc: 0.27 ng/ml