

Data Path : Z:\pestpcbsrv\HPCHEM1\ECD_P\Data\PP072925\
 Data File : PP074124.D
 Signal(s) : Signal #1: ECD1A.ch Signal #2: ECD2B.ch
 Acq On : 29 Jul 2025 22:00
 Operator : YP\AJ
 Sample : Q2721-04 10X
 Misc :
 ALS Vial : 28 Sample Multiplier: 1

Instrument :
 ECD_P
 ClientSampleId :
 BC278720-1-2

Integration File signal 1: autoint1.e
 Integration File signal 2: autoint2.e
 Quant Time: Jul 30 08:49:25 2025
 Quant Method : Z:\pestpcbsrv\HPCHEM1\ECD_P\methods\PP072525.M
 Quant Title : GC EXTRACTABLES
 QLast Update : Mon Jul 28 18:16:14 2025
 Response via : Initial Calibration
 Integrator: ChemStation

Volume Inj. : 2 µl
 Signal #1 Phase : ZB-MR1 Signal #2 Phase: ZB-MR2
 Signal #1 Info : 30Mx0.32mmx 0.50µ Signal #2 Info : 30M x 0.32mm x 0.25µm

Compound	RT#1	RT#2	Resp#1	Resp#2	ng/ml	ng/ml
System Monitoring Compounds						
1) SA Tetrachlo...	4.729	3.887	1900012	10307482	1.819	1.119 #
2) SA Decachlor...	10.614	9.010	1589417	10966741	2.367	0.964 #
Target Compounds						
3) L1 AR-1016-1	5.889	5.012	89621	597005	2.438	0.703 #
4) L1 AR-1016-2	5.889	5.070	89621	367807	1.644	0.981 #
5) L1 AR-1016-3	5.947	5.190	70548	388855	2.035	1.764
6) L1 AR-1016-4	6.028	5.236	282163	3948827	10.188	18.888 #
7) L1 AR-1016-5	6.366	5.450	261361	2275816	9.716	9.869
8) L2 AR-1221-1	4.911	4.119	170227	208372	10.870	1.861 #
9) L2 AR-1221-2	5.034f	4.187	26256	251736	2.210	3.287 #
10) L2 AR-1221-3	5.034	4.268	26256	71516	0.776	0.249 #
11) L3 AR-1232-1	5.034	4.268	26256	71516	0.948	0.315 #
12) L3 AR-1232-2	0.000	5.012	0	597005	N.D.	1.964 #
13) L3 AR-1232-3	5.889	5.190	89621	388855	3.298	3.784
14) L3 AR-1232-4	6.028	5.273	282163	1096401	20.311	10.392 #
15) L3 AR-1232-5	6.162	5.450	491524	2275816	50.304	23.573 #
16) L4 AR-1242-1	5.889	5.012	89621	597005	2.715	0.744 #
17) L4 AR-1242-2	5.889	5.070	89621	367807	1.854	1.075 #
18) L4 AR-1242-3	5.947	5.190	70548	388855	2.315	1.969
19) L4 AR-1242-4	6.060	5.273	109579	1096401	4.529	4.555
20) L4 AR-1242-5	6.741f	5.802	1390980	8236242	45.490	28.838 #
21) L5 AR-1248-1	5.889	5.012	89621	597005	3.327	1.193 #
22) L5 AR-1248-2	6.162	5.236	491524	3948827	13.196	12.686
23) L5 AR-1248-3	6.366	5.273	261361	1096401	6.355	3.165 #
24) L5 AR-1248-4	6.741	5.450	1390980	2275816	29.722	6.343 #
25) L5 AR-1248-5	6.833f	5.853	1746514	1264182	32.535	2.113 #
26) L6 AR-1254-1	6.684	5.802	301375	8236242	6.000	11.730 #
27) L6 AR-1254-2	6.894	5.952	483561	8130501	6.900	15.179 #
28) L6 AR-1254-3	7.283	6.358	328077	12396253	4.491	14.164 #
29) L6 AR-1254-4	7.572	6.589	36549	7235339	0.700	10.653 #
30) L6 AR-1254-5	7.980	7.009	291984	8773605	4.832	10.955 #
31) L7 AR-1260-1	7.447	6.680	291745	6546917	6.786	8.352
32) L7 AR-1260-2	7.741	6.836	620486	6272955	11.334	8.258 #
33) L7 AR-1260-3	8.099	7.048	153021	1266998	4.032	1.595 #
34) L7 AR-1260-4	8.318	7.317	464579	1124193	9.714	1.958 #
35) L7 AR-1260-5	8.669	7.545	298657	2188748	3.501	1.407 #
36) L8 AR-1262-1	8.318	7.048	464579	1266998	7.490	1.071 #
37) L8 AR-1262-2	8.669	7.317	298657	1124193	2.701	1.339 #
38) L8 AR-1262-3	9.012f	7.836	474421	1051671	6.169	1.363 #
39) L8 AR-1262-4	9.049	7.905	73001	2903897	1.273	2.062 #
40) L8 AR-1262-5	9.785	8.425	42460	532686	1.090	0.847
41) L9 AR-1268-1	9.012	7.836	474421	1051671	3.710	0.470 #

Data Path : Z:\pestpcbsrv\HPCHEM1\ECD_P\Data\PP072925\
 Data File : PP074124.D
 Signal(s) : Signal #1: ECD1A.ch Signal #2: ECD2B.ch
 Acq On : 29 Jul 2025 22:00
 Operator : YP\AJ
 Sample : Q2721-04 10X
 Misc :
 ALS Vial : 28 Sample Multiplier: 1

Instrument :
 ECD_P
ClientSampleId :
 BC278720-1-2

Integration File signal 1: autoint1.e
 Integration File signal 2: autoint2.e
 Quant Time: Jul 30 08:49:25 2025
 Quant Method : Z:\pestpcbsrv\HPCHEM1\ECD_P\methods\PP072525.M
 Quant Title : GC EXTRACTABLES
 QLast Update : Mon Jul 28 18:16:14 2025
 Response via : Initial Calibration
 Integrator: ChemStation

Volume Inj. : 2 µl
 Signal #1 Phase : ZB-MR1 Signal #2 Phase: ZB-MR2
 Signal #1 Info : 30Mx0.32mmx 0.50µ Signal #2 Info : 30M x 0.32mm x 0.25µm

	Compound	RT#1	RT#2	Resp#1	Resp#2	ng/ml	ng/ml
42)	L9 AR-1268-2	9.049	7.905	73001	2903897	0.624	1.342 #
43)	L9 AR-1268-3	9.316	8.124	108215	1096930	1.118	0.683 #
44)	L9 AR-1268-4	9.785	8.425	42460	532686	0.978	0.803
45)	L9 AR-1268-5	10.251f	8.741	140088	1833608	0.487	0.363 #

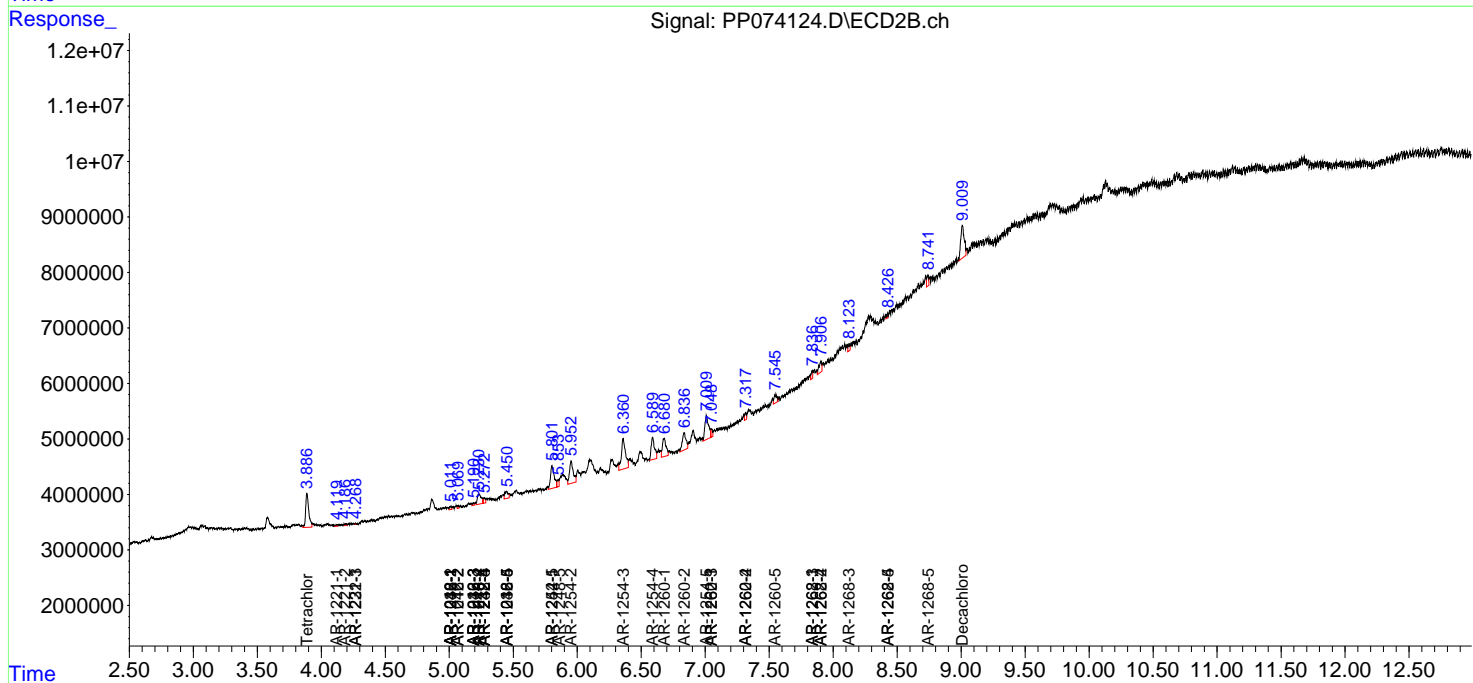
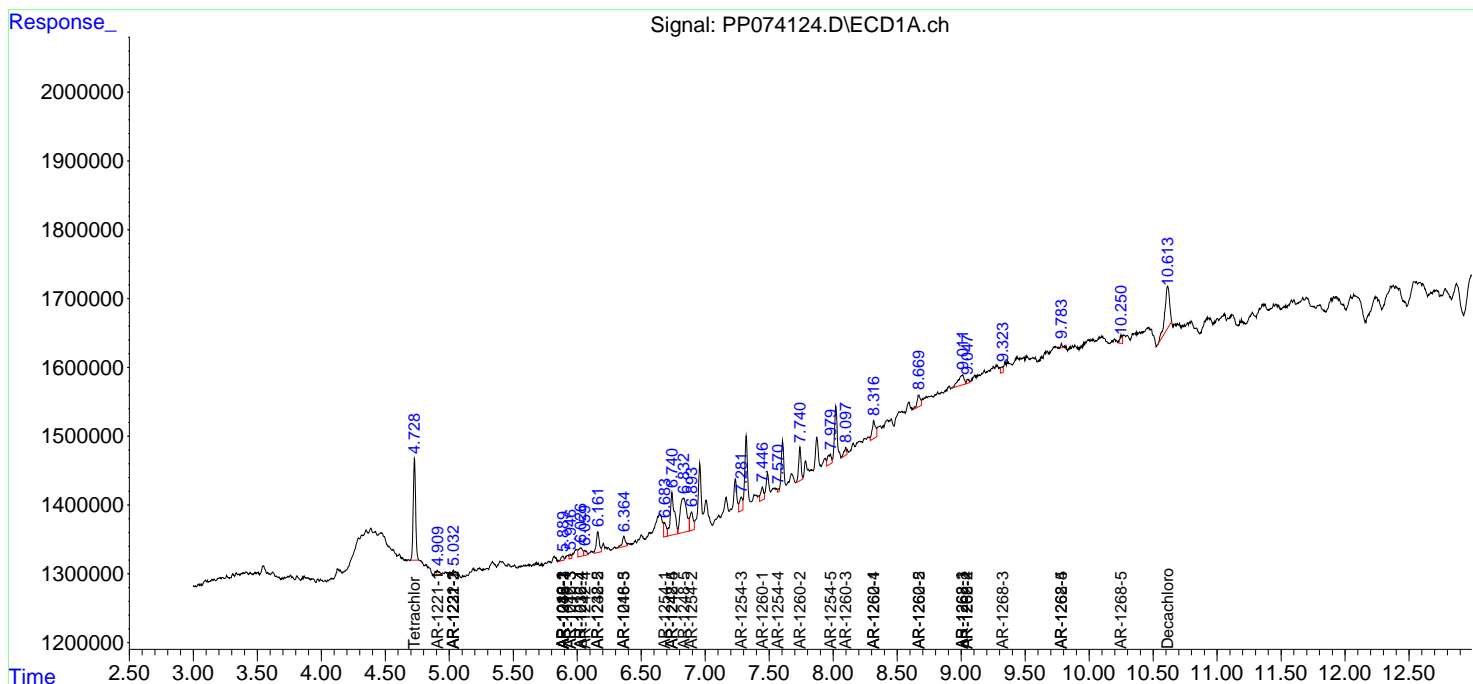
(f)=RT Delta > 1/2 Window (#)=Amounts differ by > 25% (m)=manual int.

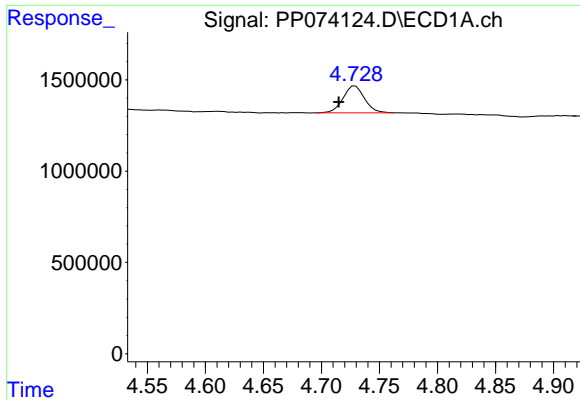
Data Path : Z:\pestpcbsrv\HPCHEM1\ECD_P\Data\PP072925\
 Data File : PP074124.D
 Signal(s) : Signal #1: ECD1A.ch Signal #2: ECD2B.ch
 Acq On : 29 Jul 2025 22:00
 Operator : YP\AJ
 Sample : Q2721-04 10X
 Misc :
 ALS Vial : 28 Sample Multiplier: 1

Instrument :
 ECD_P
 ClientSampleId :
 BC278720-1-2

Integration File signal 1: autoint1.e
 Integration File signal 2: autoint2.e
 Quant Time: Jul 30 08:49:25 2025
 Quant Method : Z:\pestpcbsrv\HPCHEM1\ECD_P\methods\PP072525.M
 Quant Title : GC EXTRACTABLES
 QLast Update : Mon Jul 28 18:16:14 2025
 Response via : Initial Calibration
 Integrator: ChemStation

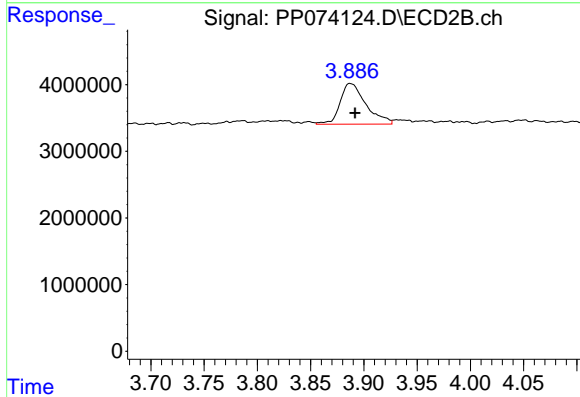
Volume Inj. : 2 µl
 Signal #1 Phase : ZB-MR1 Signal #2 Phase: ZB-MR2
 Signal #1 Info : 30Mx0.32mmx 0.50µ Signal #2 Info : 30M x 0.32mm x 0.25µm



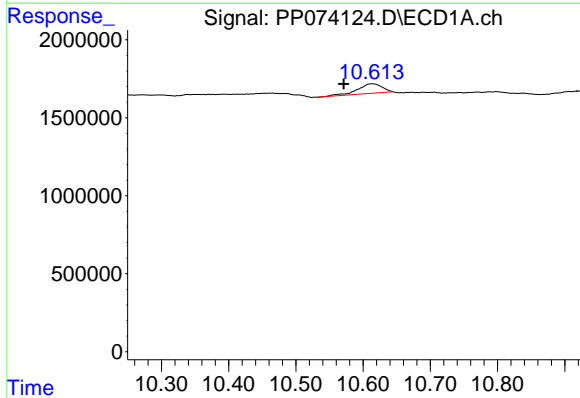


#1 Tetrachloro-m-xylene
 R.T.: 4.729 min
 Delta R.T.: 0.014 min
 Response: 1900012
 Conc: 1.82 ng/ml

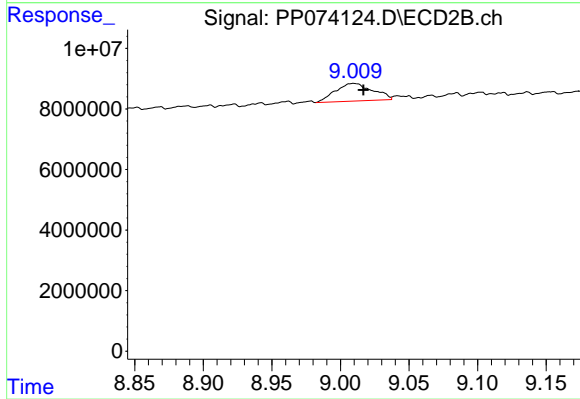
Instrument :
 ECD_P
 ClientSampleId :
 BC278720-1-2



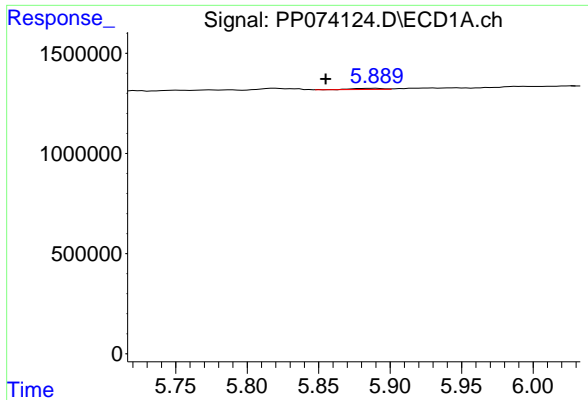
#1 Tetrachloro-m-xylene
 R.T.: 3.887 min
 Delta R.T.: -0.005 min
 Response: 10307482
 Conc: 1.12 ng/ml



#2 Decachlorobiphenyl
 R.T.: 10.614 min
 Delta R.T.: 0.043 min
 Response: 1589417
 Conc: 2.37 ng/ml



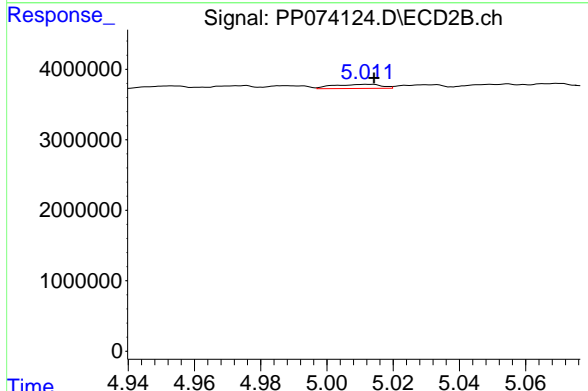
#2 Decachlorobiphenyl
 R.T.: 9.010 min
 Delta R.T.: -0.007 min
 Response: 10966741
 Conc: 0.96 ng/ml



#3 AR-1016-1

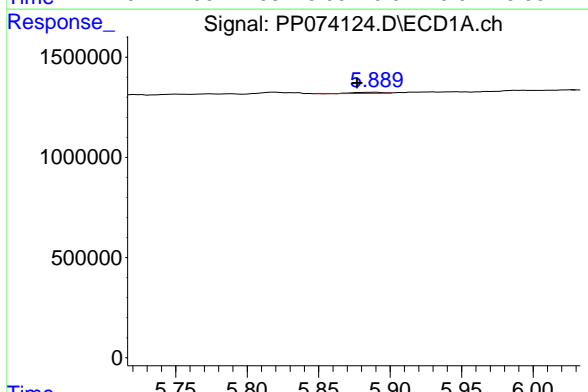
R.T.: 5.889 min
 Delta R.T.: 0.034 min
 Response: 89621
 Conc: 2.44 ng/ml

Instrument :
 ECD_P
 ClientSampleId :
 BC278720-1-2



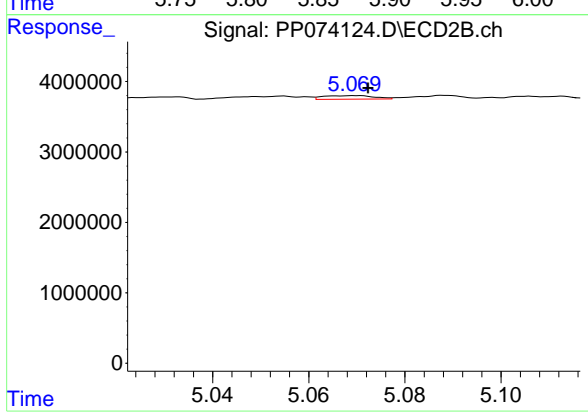
#3 AR-1016-1

R.T.: 5.012 min
 Delta R.T.: -0.002 min
 Response: 597005
 Conc: 0.70 ng/ml



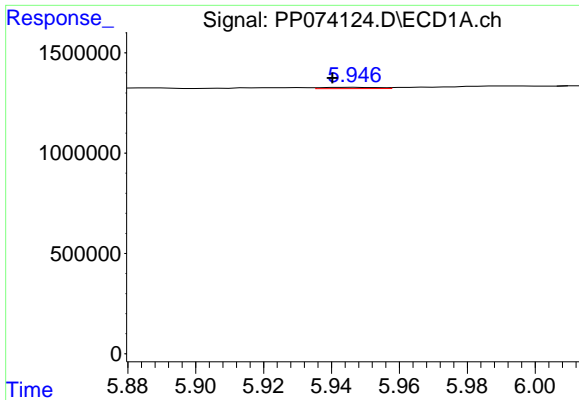
#4 AR-1016-2

R.T.: 5.889 min
 Delta R.T.: 0.012 min
 Response: 89621
 Conc: 1.64 ng/ml



#4 AR-1016-2

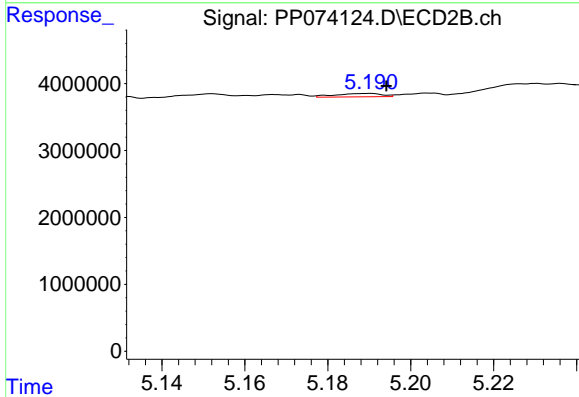
R.T.: 5.070 min
 Delta R.T.: -0.003 min
 Response: 367807
 Conc: 0.98 ng/ml



#5 AR-1016-3

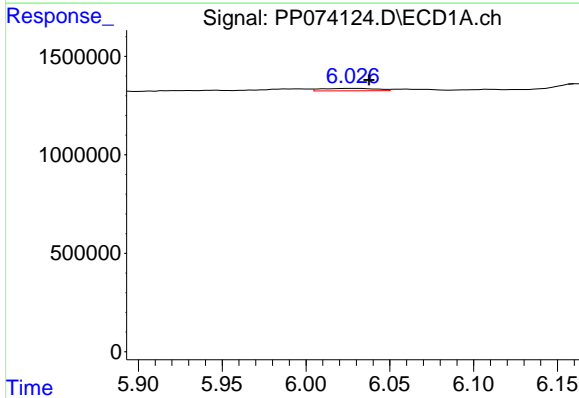
R.T.: 5.947 min
 Delta R.T.: 0.007 min
 Response: 70548
 Conc: 2.03 ng/ml

Instrument :
 ECD_P
 ClientSampleId :
 BC278720-1-2



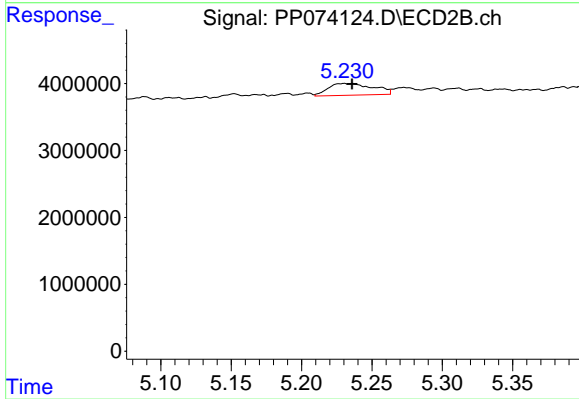
#5 AR-1016-3

R.T.: 5.190 min
 Delta R.T.: -0.005 min
 Response: 388855
 Conc: 1.76 ng/ml



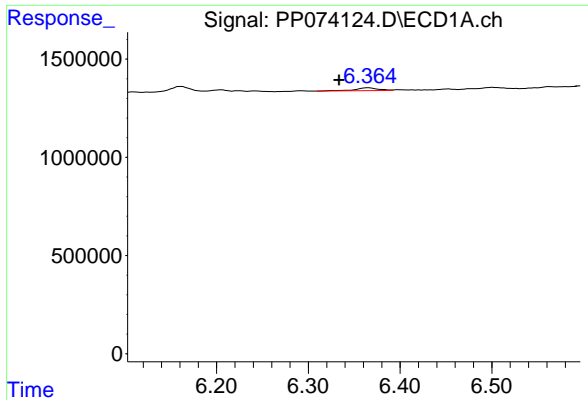
#6 AR-1016-4

R.T.: 6.028 min
 Delta R.T.: -0.010 min
 Response: 282163
 Conc: 10.19 ng/ml



#6 AR-1016-4

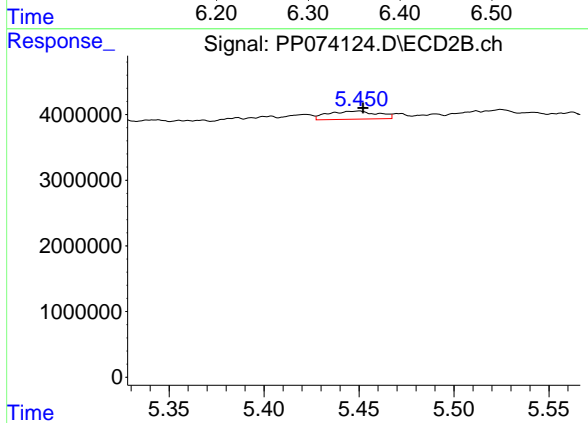
R.T.: 5.236 min
 Delta R.T.: 0.000 min
 Response: 3948827
 Conc: 18.89 ng/ml



#7 AR-1016-5

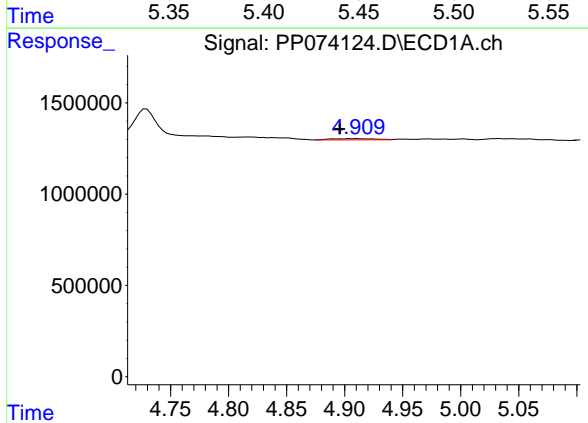
R.T.: 6.366 min
 Delta R.T.: 0.032 min
 Response: 261361
 Conc: 9.72 ng/ml

Instrument :
 ECD_P
 ClientSampleId :
 BC278720-1-2



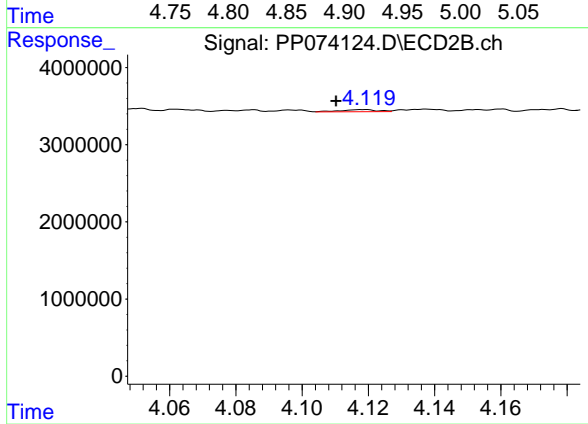
#7 AR-1016-5

R.T.: 5.450 min
 Delta R.T.: -0.002 min
 Response: 2275816
 Conc: 9.87 ng/ml



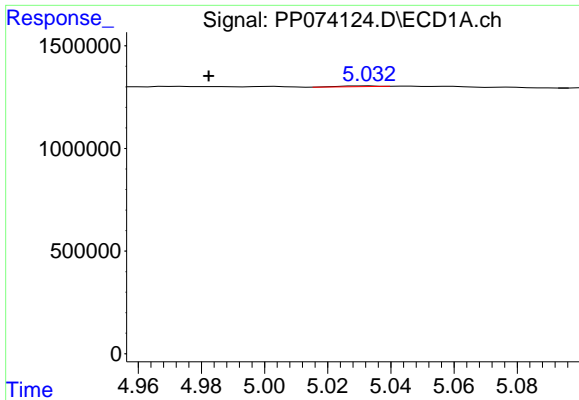
#8 AR-1221-1

R.T.: 4.911 min
 Delta R.T.: 0.015 min
 Response: 170227
 Conc: 10.87 ng/ml



#8 AR-1221-1

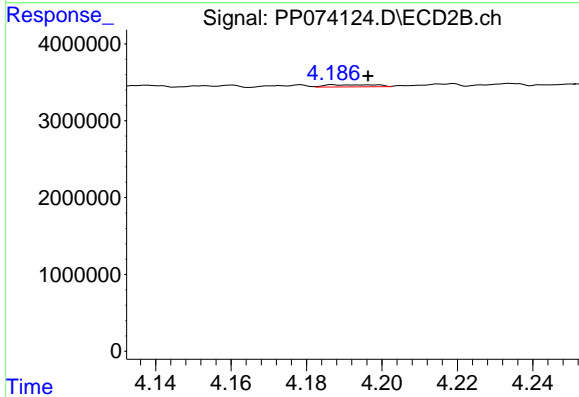
R.T.: 4.119 min
 Delta R.T.: 0.009 min
 Response: 208372
 Conc: 1.86 ng/ml



#9 AR-1221-2

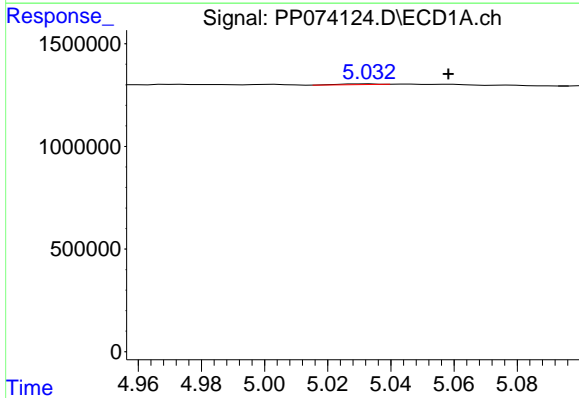
R.T.: 5.034 min
 Delta R.T.: 0.051 min
 Response: 26256
 Conc: 2.21 ng/ml

Instrument :
 ECD_P
 ClientSampleId :
 BC278720-1-2



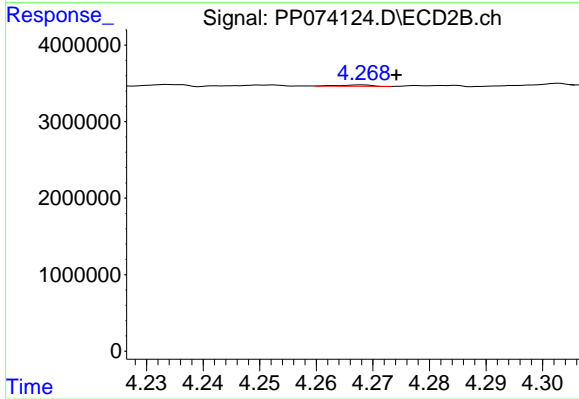
#9 AR-1221-2

R.T.: 4.187 min
 Delta R.T.: -0.009 min
 Response: 251736
 Conc: 3.29 ng/ml



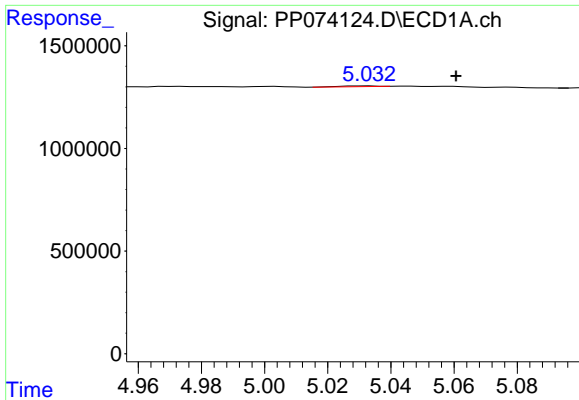
#10 AR-1221-3

R.T.: 5.034 min
 Delta R.T.: -0.025 min
 Response: 26256
 Conc: 0.78 ng/ml



#10 AR-1221-3

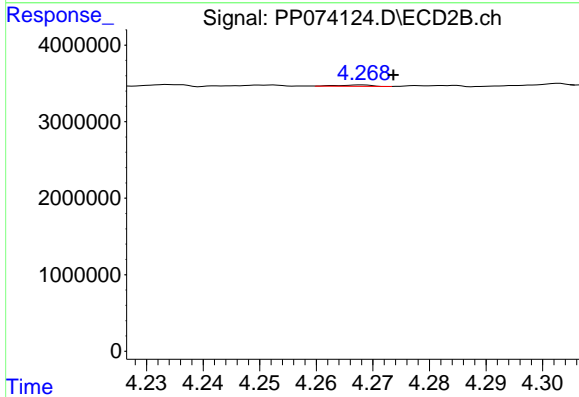
R.T.: 4.268 min
 Delta R.T.: -0.006 min
 Response: 71516
 Conc: 0.25 ng/ml



#11 AR-1232-1

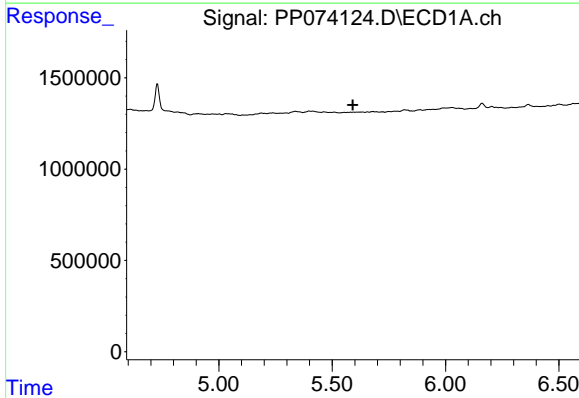
R.T.: 5.034 min
 Delta R.T.: -0.027 min
 Response: 26256
 Conc: 0.95 ng/ml

Instrument :
 ECD_P
 ClientSampleId :
 BC278720-1-2



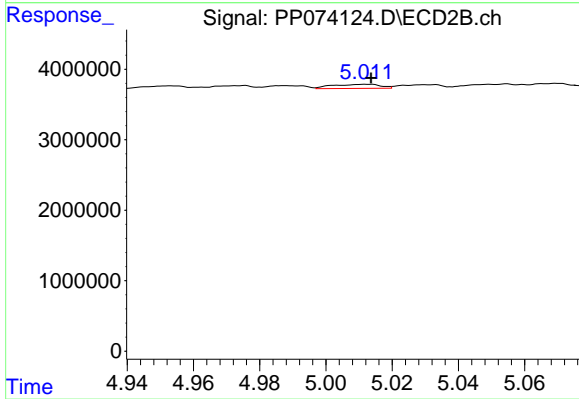
#11 AR-1232-1

R.T.: 4.268 min
 Delta R.T.: -0.006 min
 Response: 71516
 Conc: 0.31 ng/ml



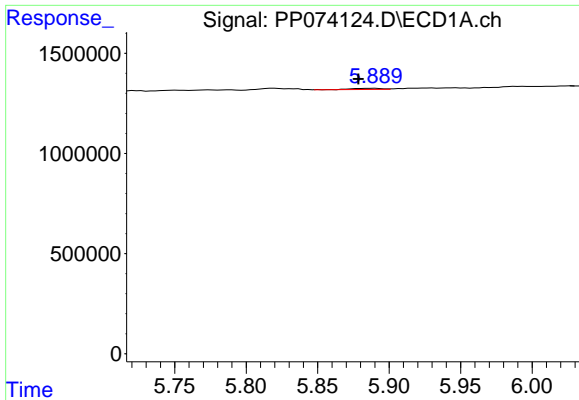
#12 AR-1232-2

R.T.: 0.000 min
 Exp R.T. : 5.590 min
 Response: 0
 Conc: N.D.



#12 AR-1232-2

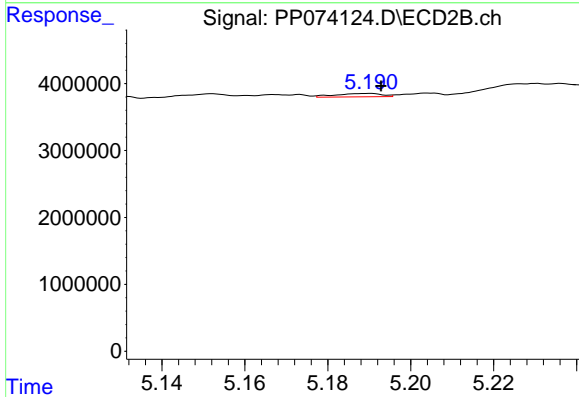
R.T.: 5.012 min
 Delta R.T.: -0.001 min
 Response: 597005
 Conc: 1.96 ng/ml



#13 AR-1232-3

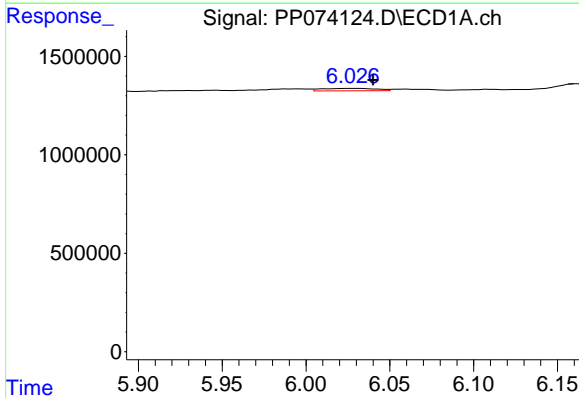
R.T.: 5.889 min
 Delta R.T.: 0.011 min
 Response: 89621
 Conc: 3.30 ng/ml

Instrument :
 ECD_P
 ClientSampleId :
 BC278720-1-2



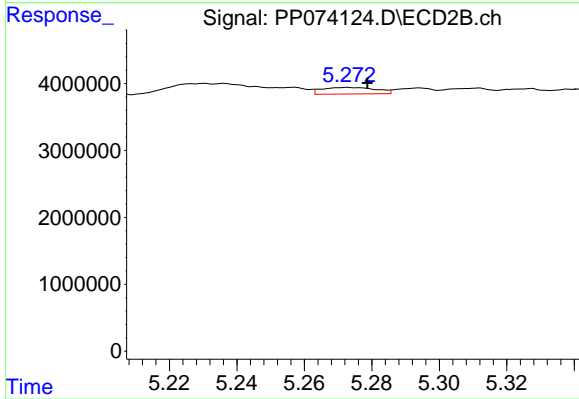
#13 AR-1232-3

R.T.: 5.190 min
 Delta R.T.: -0.003 min
 Response: 388855
 Conc: 3.78 ng/ml



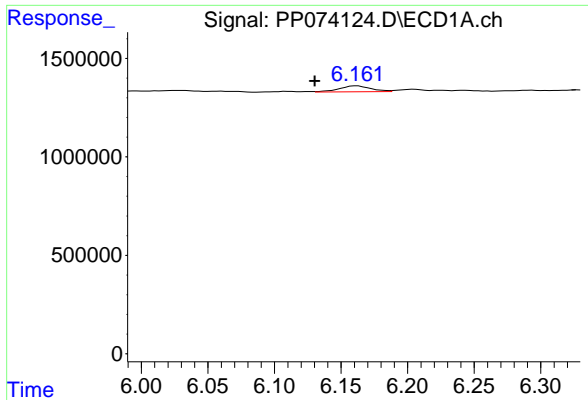
#14 AR-1232-4

R.T.: 6.028 min
 Delta R.T.: -0.012 min
 Response: 282163
 Conc: 20.31 ng/ml



#14 AR-1232-4

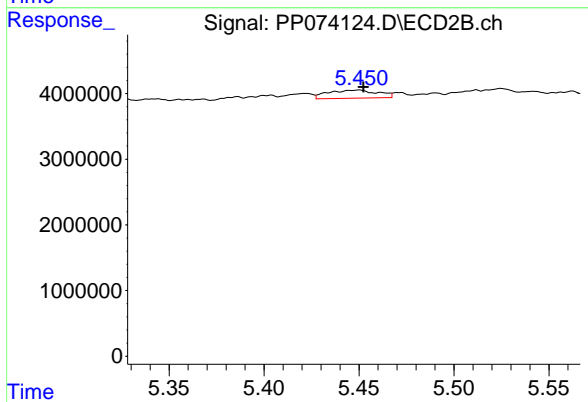
R.T.: 5.273 min
 Delta R.T.: -0.006 min
 Response: 1096401
 Conc: 10.39 ng/ml



#15 AR-1232-5

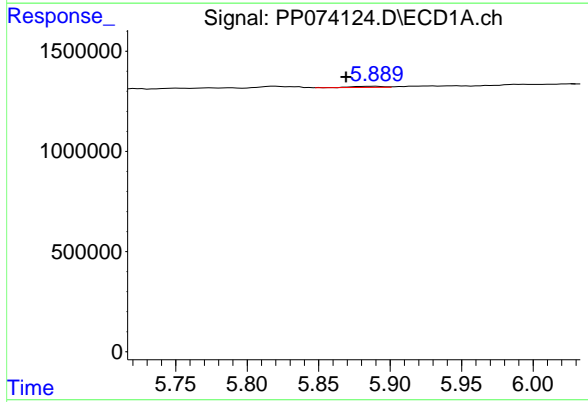
R.T.: 6.162 min
 Delta R.T.: 0.031 min
 Response: 491524
 Conc: 50.30 ng/ml

Instrument :
 ECD_P
 ClientSampleId :
 BC278720-1-2



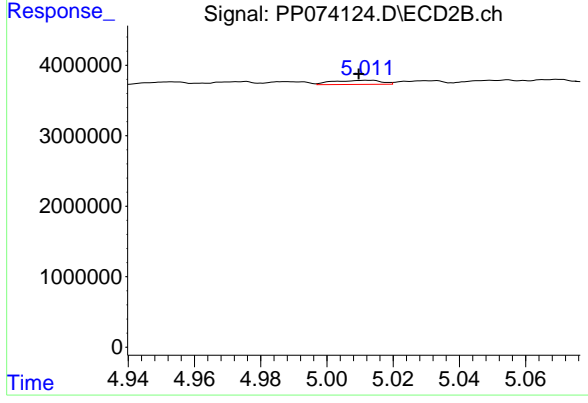
#15 AR-1232-5

R.T.: 5.450 min
 Delta R.T.: -0.002 min
 Response: 2275816
 Conc: 23.57 ng/ml



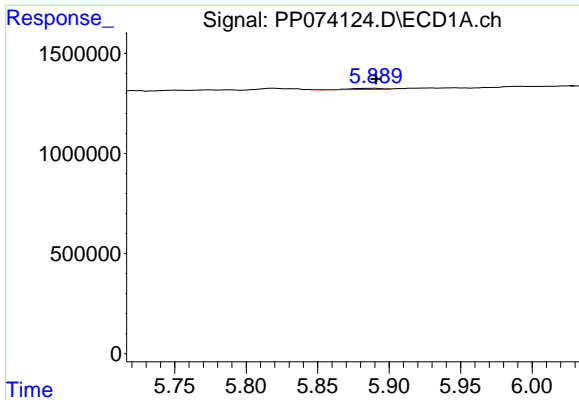
#16 AR-1242-1

R.T.: 5.889 min
 Delta R.T.: 0.020 min
 Response: 89621
 Conc: 2.71 ng/ml



#16 AR-1242-1

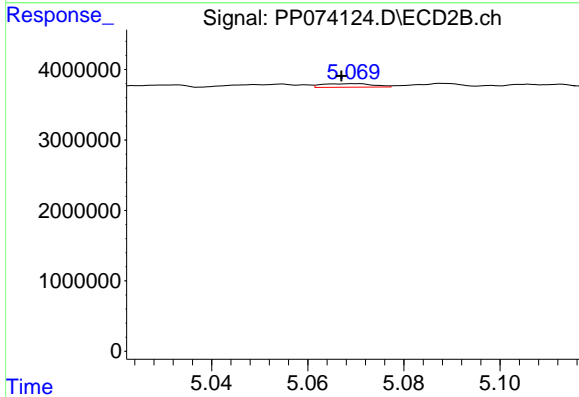
R.T.: 5.012 min
 Delta R.T.: 0.003 min
 Response: 597005
 Conc: 0.74 ng/ml



#17 AR-1242-2

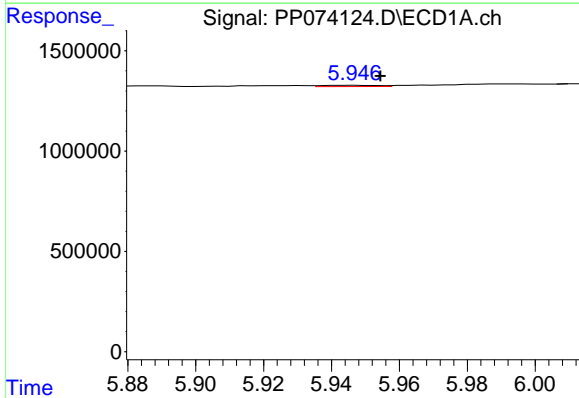
R.T.: 5.889 min
 Delta R.T.: -0.002 min
 Response: 89621
 Conc: 1.85 ng/ml

Instrument :
 ECD_P
 ClientSampleId :
 BC278720-1-2



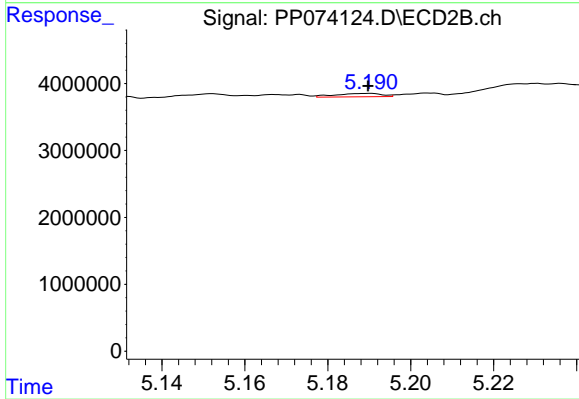
#17 AR-1242-2

R.T.: 5.070 min
 Delta R.T.: 0.003 min
 Response: 367807
 Conc: 1.07 ng/ml



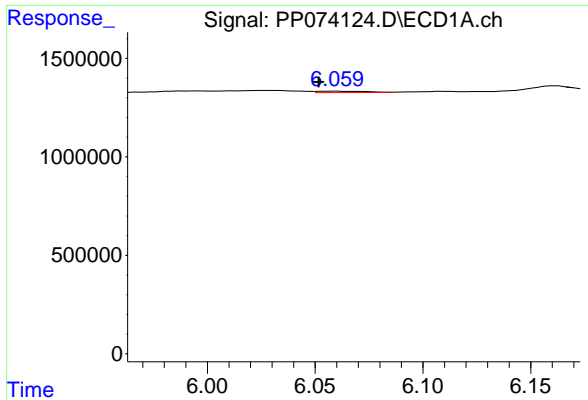
#18 AR-1242-3

R.T.: 5.947 min
 Delta R.T.: -0.007 min
 Response: 70548
 Conc: 2.32 ng/ml



#18 AR-1242-3

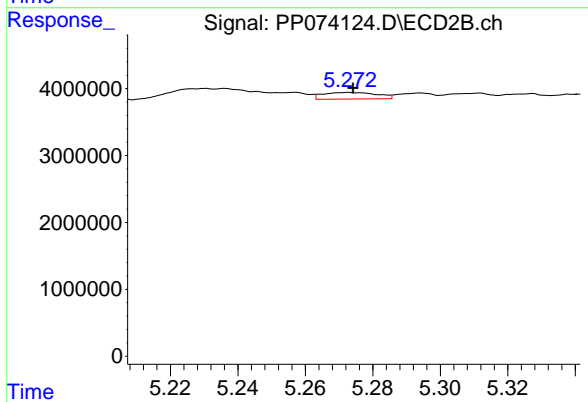
R.T.: 5.190 min
 Delta R.T.: 0.000 min
 Response: 388855
 Conc: 1.97 ng/ml



#19 AR-1242-4

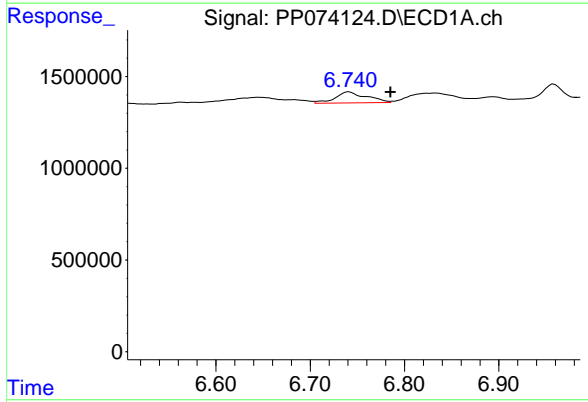
R.T.: 6.060 min
 Delta R.T.: 0.009 min
 Response: 109579
 Conc: 4.53 ng/ml

Instrument :
 ECD_P
 ClientSampleId :
 BC278720-1-2



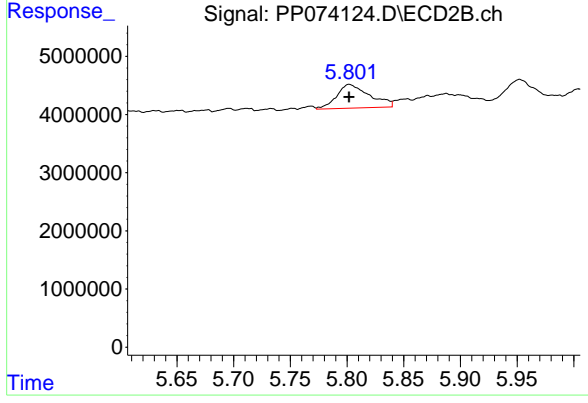
#19 AR-1242-4

R.T.: 5.273 min
 Delta R.T.: -0.002 min
 Response: 1096401
 Conc: 4.55 ng/ml



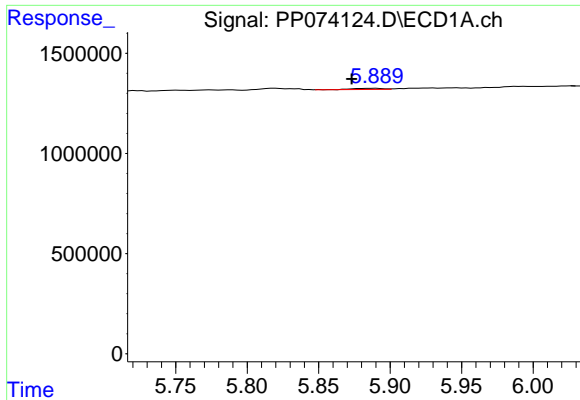
#20 AR-1242-5

R.T.: 6.741 min
 Delta R.T.: -0.044 min
 Response: 1390980
 Conc: 45.49 ng/ml



#20 AR-1242-5

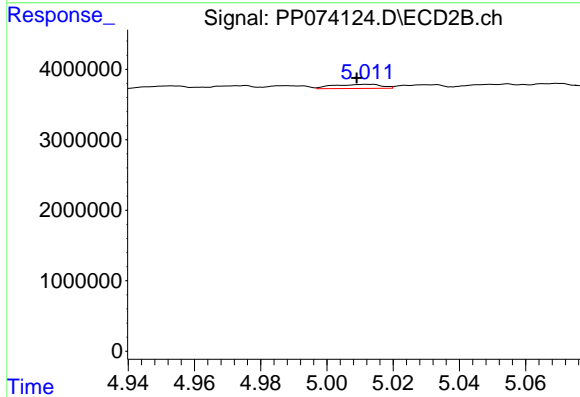
R.T.: 5.802 min
 Delta R.T.: 0.000 min
 Response: 8236242
 Conc: 28.84 ng/ml



#21 AR-1248-1

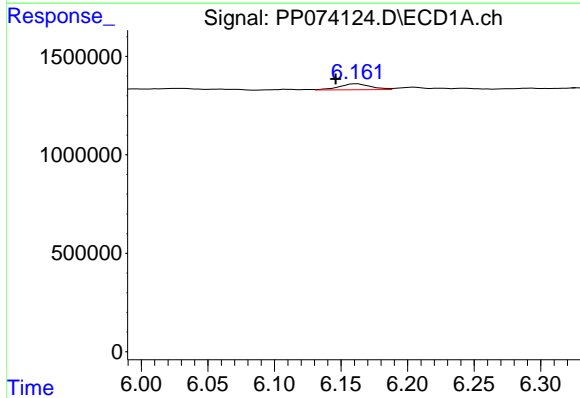
R.T.: 5.889 min
 Delta R.T.: 0.016 min
 Response: 89621
 Conc: 3.33 ng/ml

Instrument :
 ECD_P
 ClientSampleId :
 BC278720-1-2



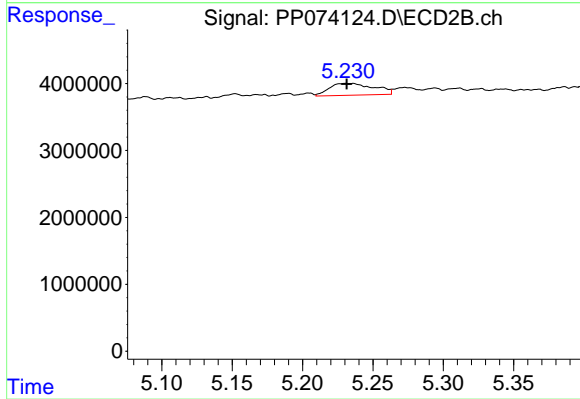
#21 AR-1248-1

R.T.: 5.012 min
 Delta R.T.: 0.003 min
 Response: 597005
 Conc: 1.19 ng/ml



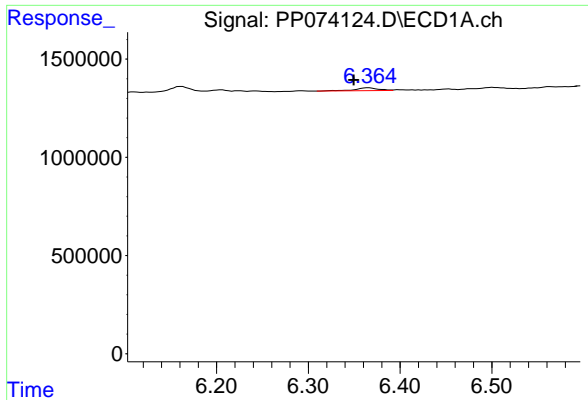
#22 AR-1248-2

R.T.: 6.162 min
 Delta R.T.: 0.016 min
 Response: 491524
 Conc: 13.20 ng/ml



#22 AR-1248-2

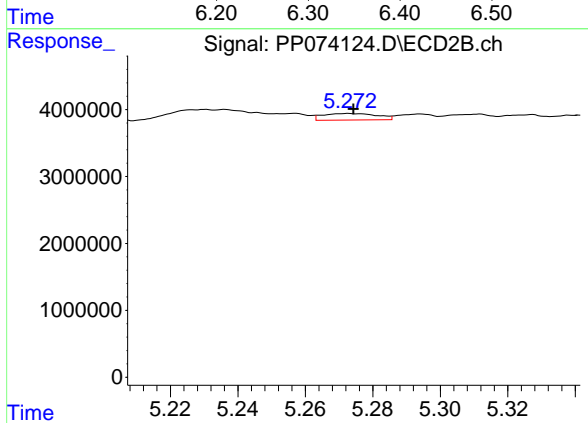
R.T.: 5.236 min
 Delta R.T.: 0.005 min
 Response: 3948827
 Conc: 12.69 ng/ml



#23 AR-1248-3

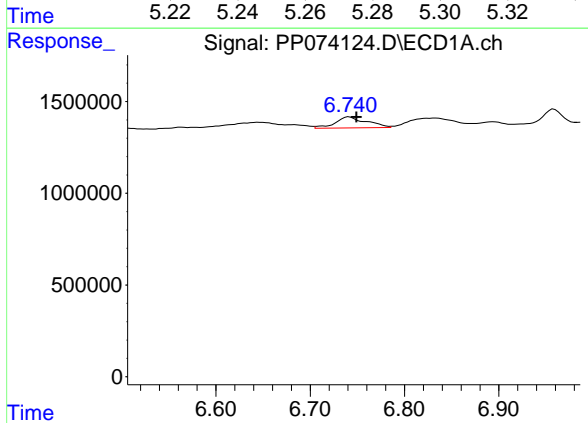
R.T.: 6.366 min
 Delta R.T.: 0.016 min
 Response: 261361
 Conc: 6.36 ng/ml

Instrument :
 ECD_P
 ClientSampleId :
 BC278720-1-2



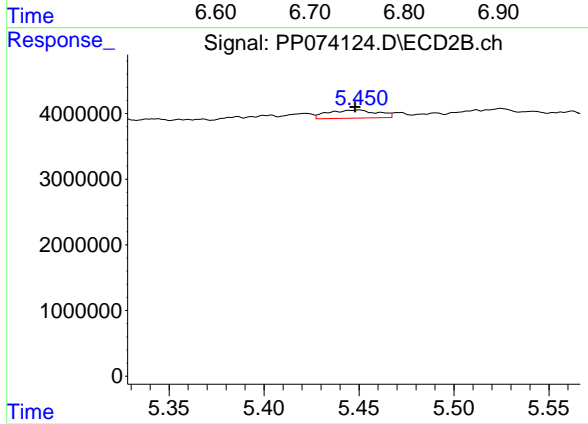
#23 AR-1248-3

R.T.: 5.273 min
 Delta R.T.: -0.002 min
 Response: 1096401
 Conc: 3.17 ng/ml



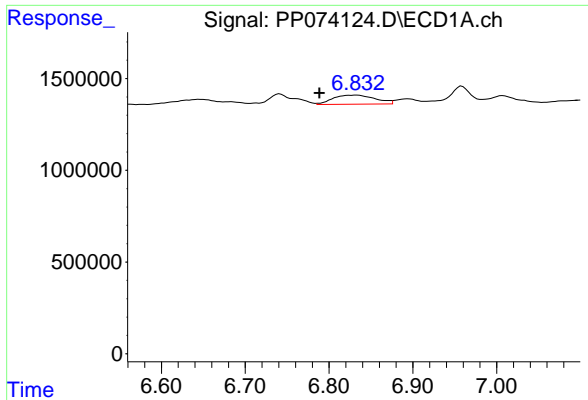
#24 AR-1248-4

R.T.: 6.741 min
 Delta R.T.: -0.008 min
 Response: 1390980
 Conc: 29.72 ng/ml



#24 AR-1248-4

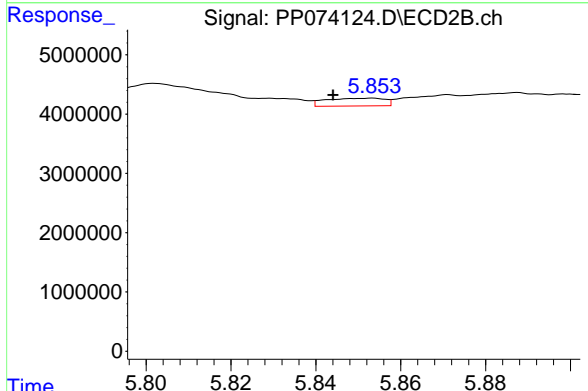
R.T.: 5.450 min
 Delta R.T.: 0.002 min
 Response: 2275816
 Conc: 6.34 ng/ml



#25 AR-1248-5

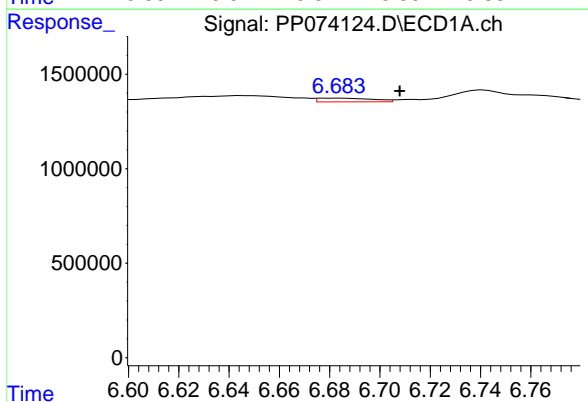
R.T.: 6.833 min
 Delta R.T.: 0.045 min
 Response: 1746514
 Conc: 32.54 ng/ml

Instrument :
 ECD_P
 ClientSampleId :
 BC278720-1-2



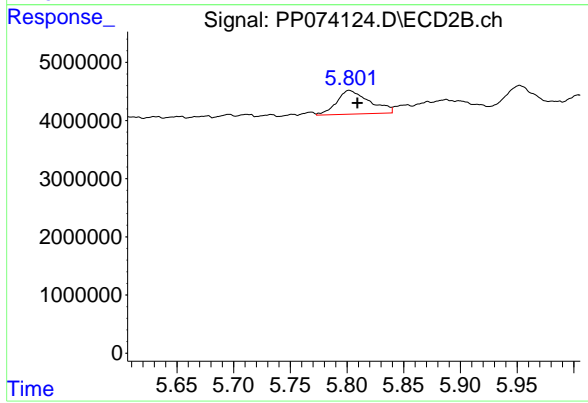
#25 AR-1248-5

R.T.: 5.853 min
 Delta R.T.: 0.009 min
 Response: 1264182
 Conc: 2.11 ng/ml



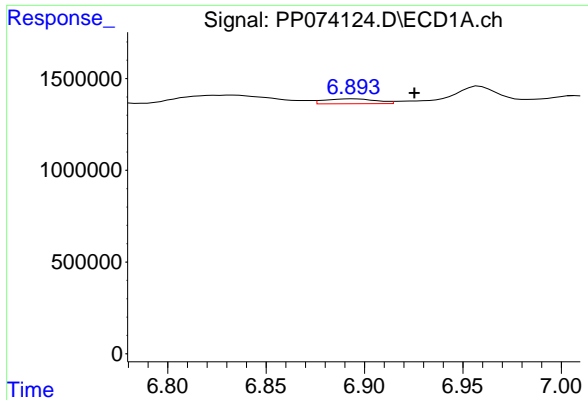
#26 AR-1254-1

R.T.: 6.684 min
 Delta R.T.: -0.024 min
 Response: 301375
 Conc: 6.00 ng/ml



#26 AR-1254-1

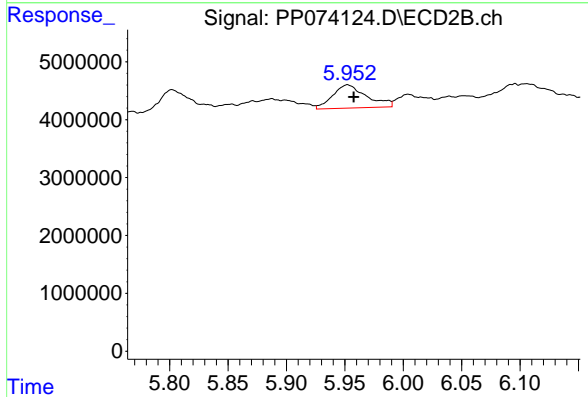
R.T.: 5.802 min
 Delta R.T.: -0.007 min
 Response: 8236242
 Conc: 11.73 ng/ml



#27 AR-1254-2

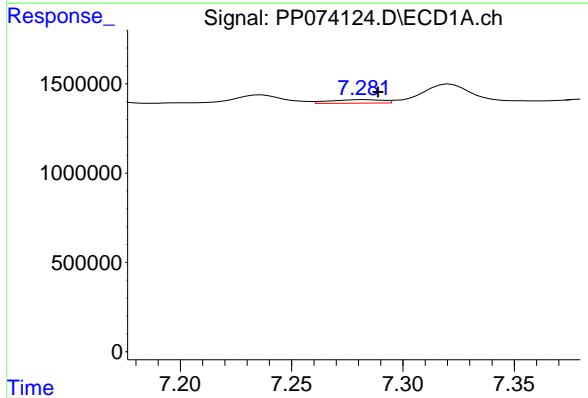
R.T.: 6.894 min
 Delta R.T.: -0.031 min
 Response: 483561
 Conc: 6.90 ng/ml

Instrument :
 ECD_P
 ClientSampleId :
 BC278720-1-2



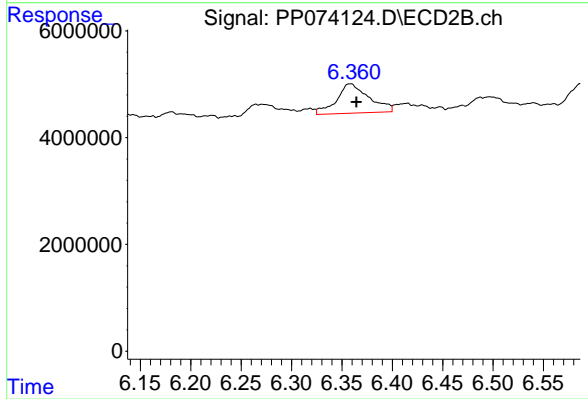
#27 AR-1254-2

R.T.: 5.952 min
 Delta R.T.: -0.005 min
 Response: 8130501
 Conc: 15.18 ng/ml



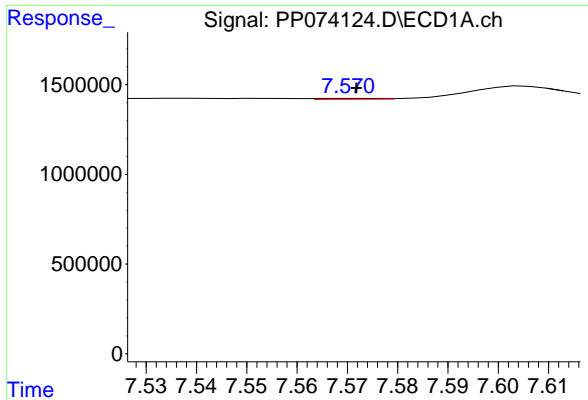
#28 AR-1254-3

R.T.: 7.283 min
 Delta R.T.: -0.006 min
 Response: 328077
 Conc: 4.49 ng/ml



#28 AR-1254-3

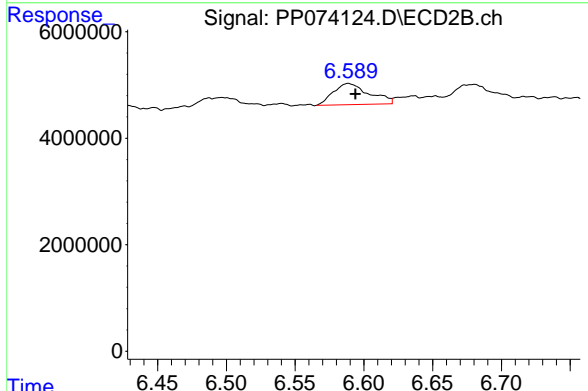
R.T.: 6.358 min
 Delta R.T.: -0.006 min
 Response: 12396253
 Conc: 14.16 ng/ml



#29 AR-1254-4

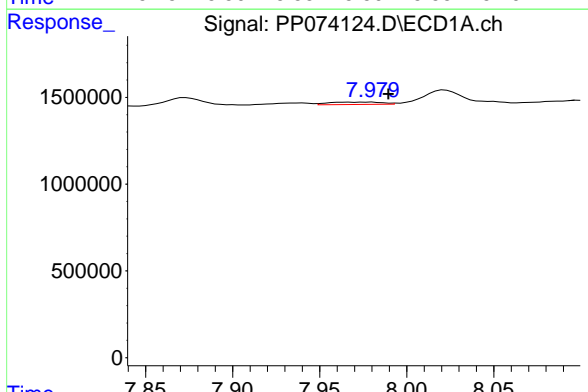
R.T.: 7.572 min
 Delta R.T.: 0.000 min
 Response: 36549
 Conc: 0.70 ng/ml

Instrument :
 ECD_P
 ClientSampleId :
 BC278720-1-2



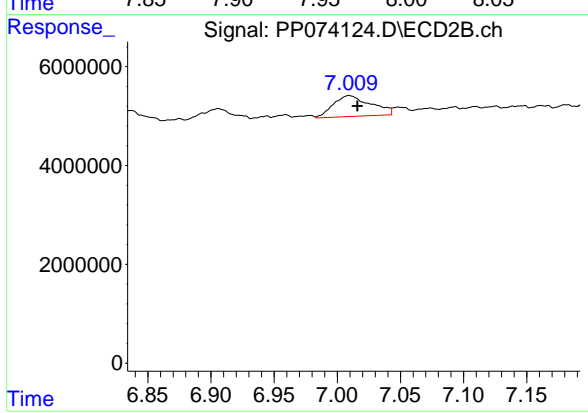
#29 AR-1254-4

R.T.: 6.589 min
 Delta R.T.: -0.005 min
 Response: 7235339
 Conc: 10.65 ng/ml



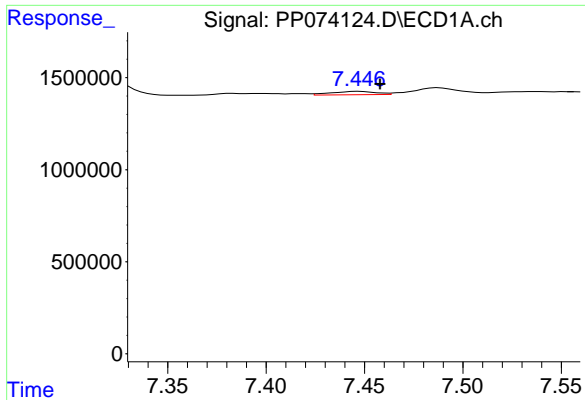
#30 AR-1254-5

R.T.: 7.980 min
 Delta R.T.: -0.009 min
 Response: 291984
 Conc: 4.83 ng/ml



#30 AR-1254-5

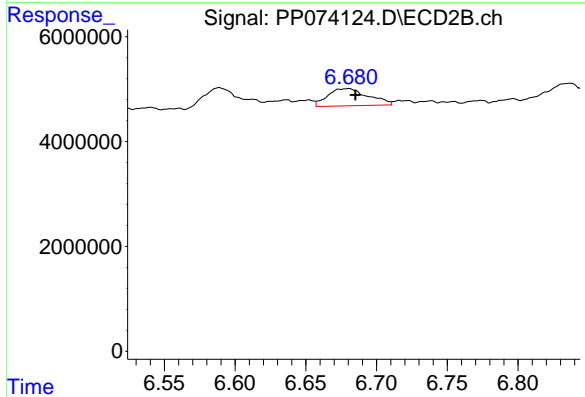
R.T.: 7.009 min
 Delta R.T.: -0.007 min
 Response: 8773605
 Conc: 10.96 ng/ml



#31 AR-1260-1

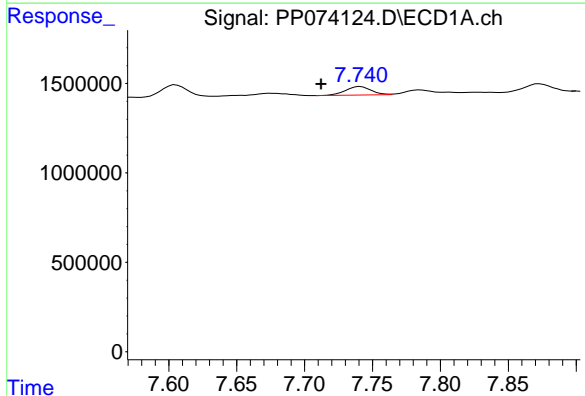
R.T.: 7.447 min
 Delta R.T.: -0.011 min
 Response: 291745
 Conc: 6.79 ng/ml

Instrument :
 ECD_P
 ClientSampleId :
 BC278720-1-2



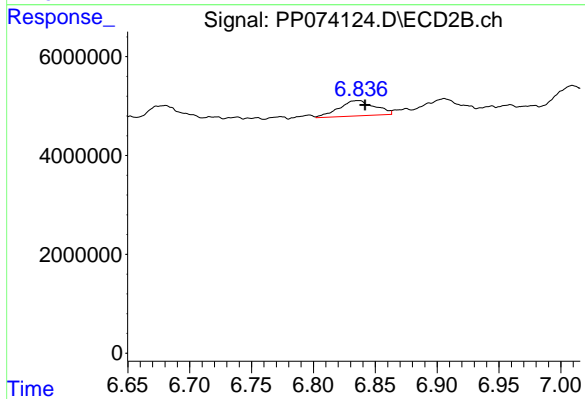
#31 AR-1260-1

R.T.: 6.680 min
 Delta R.T.: -0.005 min
 Response: 6546917
 Conc: 8.35 ng/ml



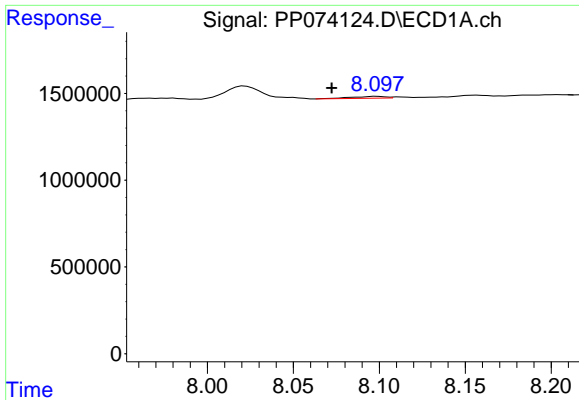
#32 AR-1260-2

R.T.: 7.741 min
 Delta R.T.: 0.029 min
 Response: 620486
 Conc: 11.33 ng/ml



#32 AR-1260-2

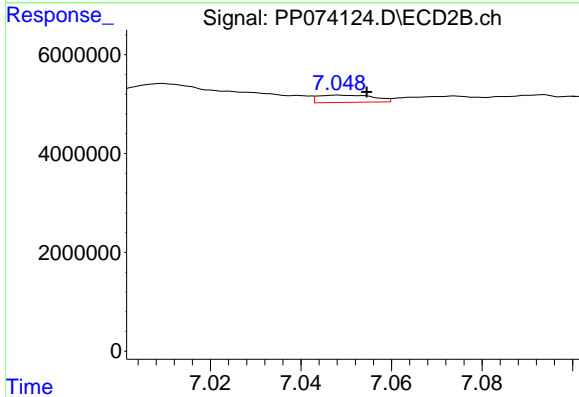
R.T.: 6.836 min
 Delta R.T.: -0.005 min
 Response: 6272955
 Conc: 8.26 ng/ml



#33 AR-1260-3

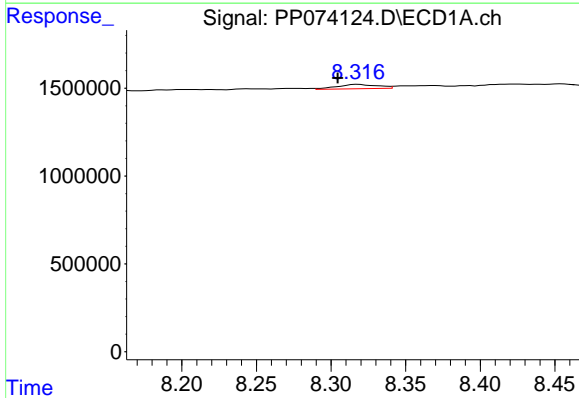
R.T.: 8.099 min
 Delta R.T.: 0.027 min
 Response: 153021
 Conc: 4.03 ng/ml

Instrument :
 ECD_P
 ClientSampleId :
 BC278720-1-2



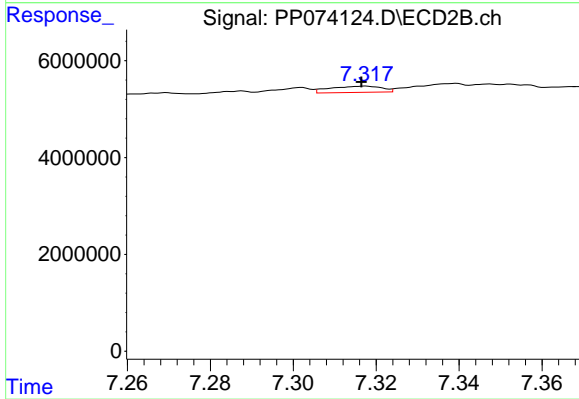
#33 AR-1260-3

R.T.: 7.048 min
 Delta R.T.: -0.006 min
 Response: 1266998
 Conc: 1.59 ng/ml



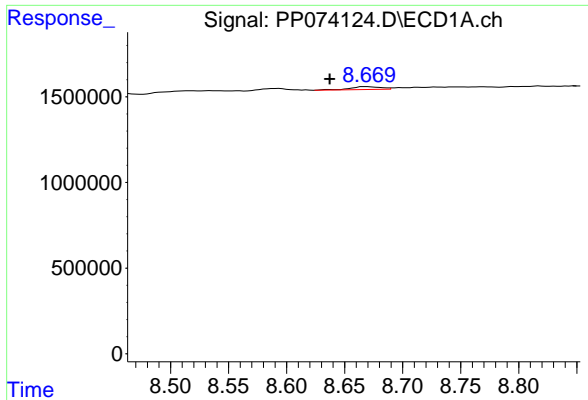
#34 AR-1260-4

R.T.: 8.318 min
 Delta R.T.: 0.014 min
 Response: 464579
 Conc: 9.71 ng/ml



#34 AR-1260-4

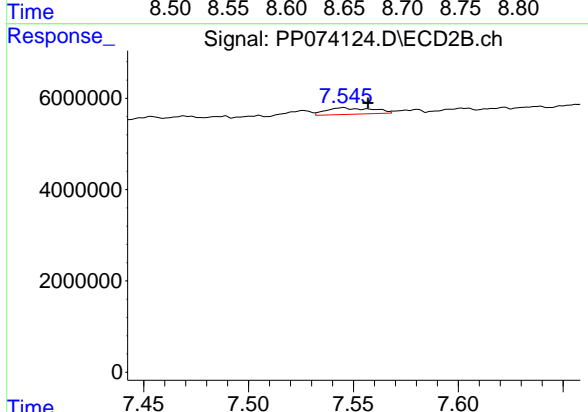
R.T.: 7.317 min
 Delta R.T.: 0.000 min
 Response: 1124193
 Conc: 1.96 ng/ml



#35 AR-1260-5

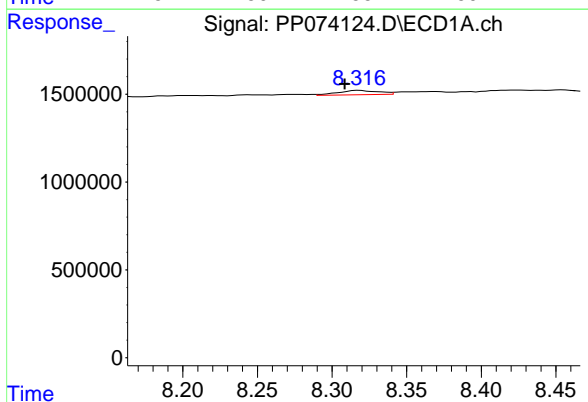
R.T.: 8.669 min
 Delta R.T.: 0.032 min
 Response: 298657
 Conc: 3.50 ng/ml

Instrument :
 ECD_P
 ClientSampleId :
 BC278720-1-2



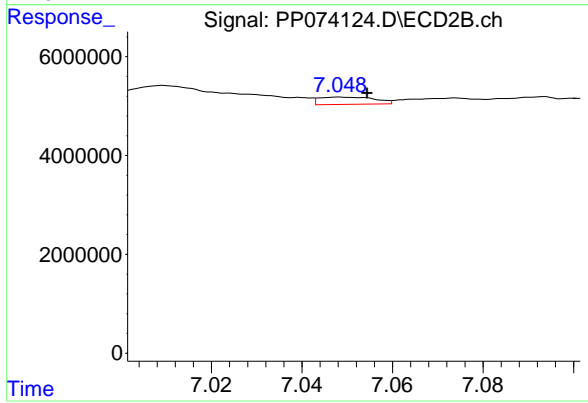
#35 AR-1260-5

R.T.: 7.545 min
 Delta R.T.: -0.012 min
 Response: 2188748
 Conc: 1.41 ng/ml



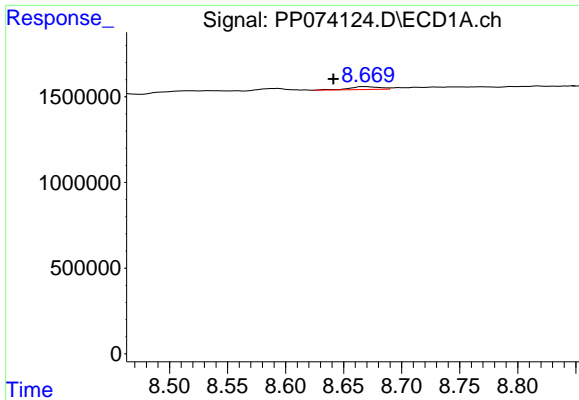
#36 AR-1262-1

R.T.: 8.318 min
 Delta R.T.: 0.010 min
 Response: 464579
 Conc: 7.49 ng/ml



#36 AR-1262-1

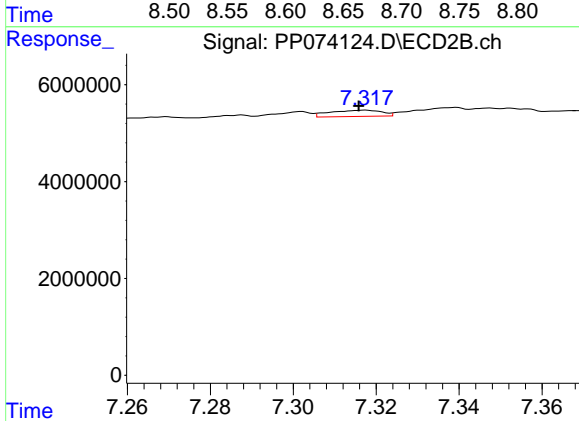
R.T.: 7.048 min
 Delta R.T.: -0.006 min
 Response: 1266998
 Conc: 1.07 ng/ml



#37 AR-1262-2

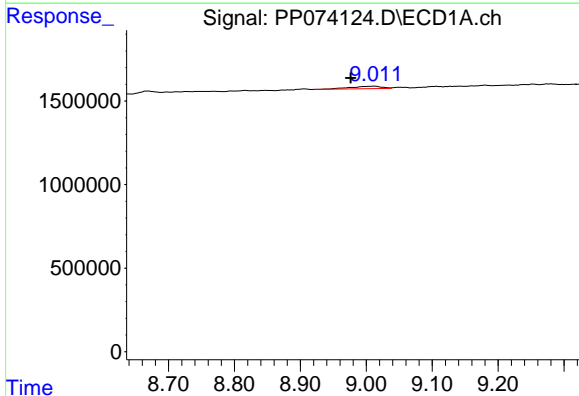
R.T.: 8.669 min
 Delta R.T.: 0.028 min
 Response: 298657
 Conc: 2.70 ng/ml

Instrument :
 ECD_P
 ClientSampleId :
 BC278720-1-2



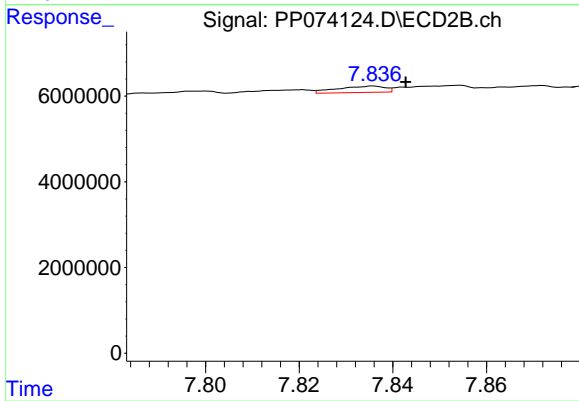
#37 AR-1262-2

R.T.: 7.317 min
 Delta R.T.: 0.001 min
 Response: 1124193
 Conc: 1.34 ng/ml



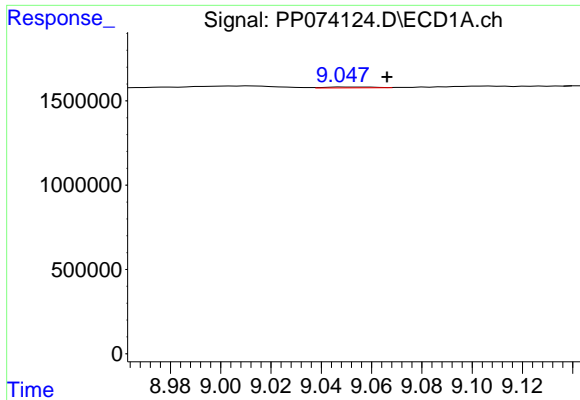
#38 AR-1262-3

R.T.: 9.012 min
 Delta R.T.: 0.036 min
 Response: 474421
 Conc: 6.17 ng/ml



#38 AR-1262-3

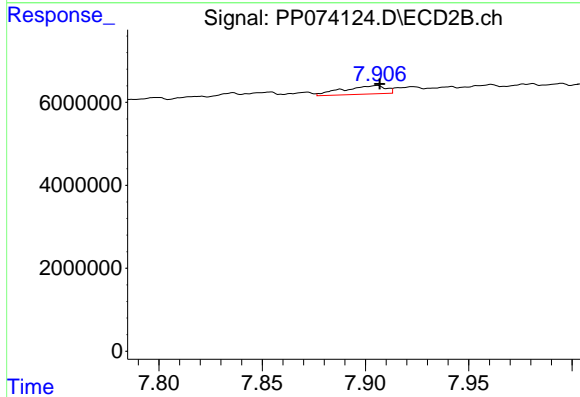
R.T.: 7.836 min
 Delta R.T.: -0.007 min
 Response: 1051671
 Conc: 1.36 ng/ml



#39 AR-1262-4

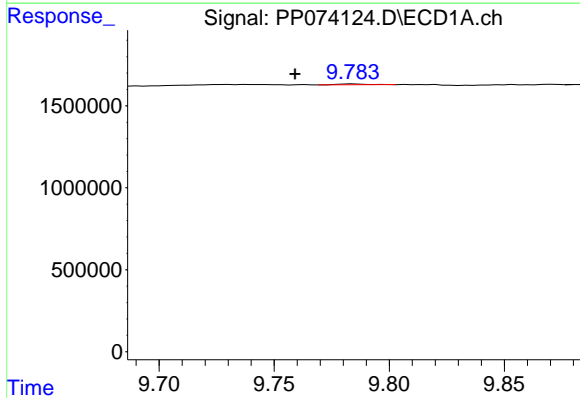
R.T.: 9.049 min
 Delta R.T.: -0.017 min
 Response: 73001
 Conc: 1.27 ng/ml

Instrument :
 ECD_P
 ClientSampleId :
 BC278720-1-2



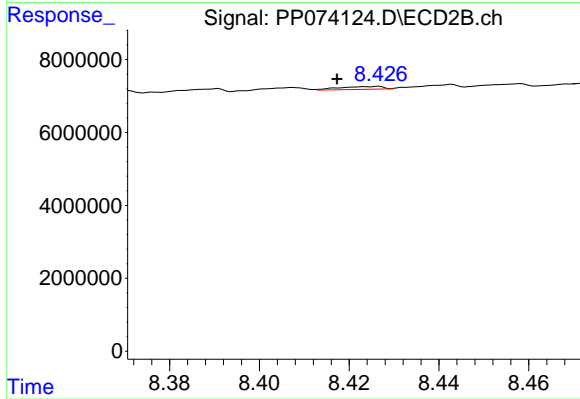
#39 AR-1262-4

R.T.: 7.905 min
 Delta R.T.: -0.002 min
 Response: 2903897
 Conc: 2.06 ng/ml



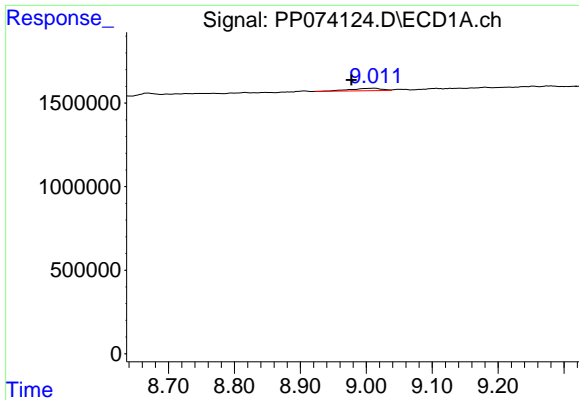
#40 AR-1262-5

R.T.: 9.785 min
 Delta R.T.: 0.025 min
 Response: 42460
 Conc: 1.09 ng/ml



#40 AR-1262-5

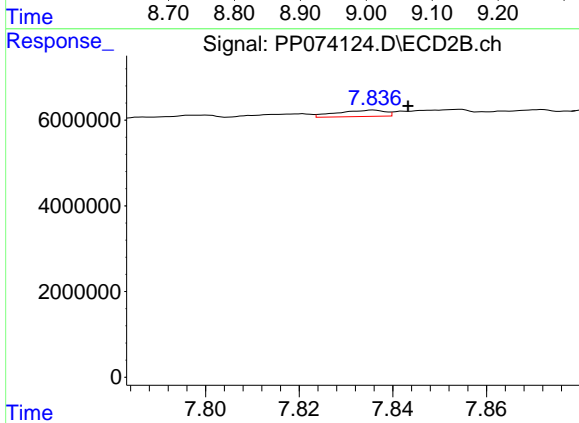
R.T.: 8.425 min
 Delta R.T.: 0.008 min
 Response: 532686
 Conc: 0.85 ng/ml



#41 AR-1268-1

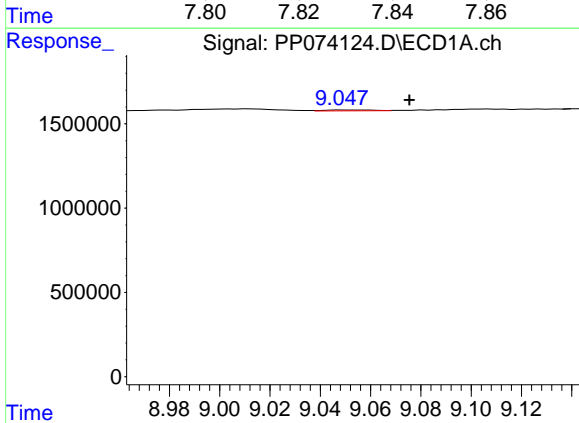
R.T.: 9.012 min
 Delta R.T.: 0.035 min
 Response: 474421
 Conc: 3.71 ng/ml

Instrument :
 ECD_P
 ClientSampleId :
 BC278720-1-2



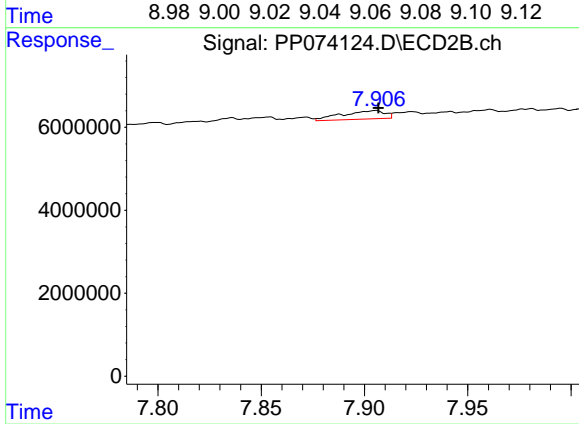
#41 AR-1268-1

R.T.: 7.836 min
 Delta R.T.: -0.008 min
 Response: 1051671
 Conc: 0.47 ng/ml



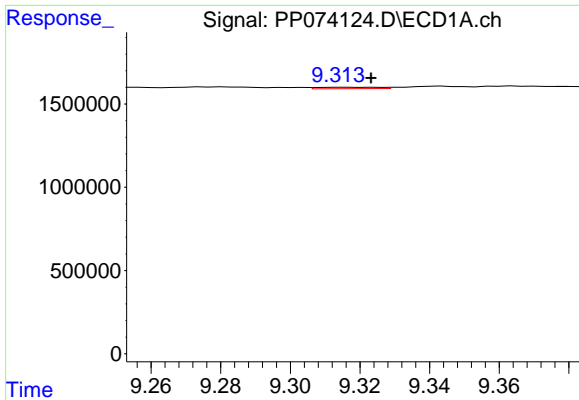
#42 AR-1268-2

R.T.: 9.049 min
 Delta R.T.: -0.026 min
 Response: 73001
 Conc: 0.62 ng/ml



#42 AR-1268-2

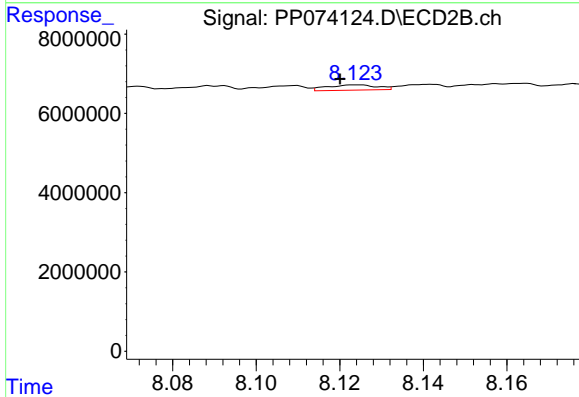
R.T.: 7.905 min
 Delta R.T.: -0.001 min
 Response: 2903897
 Conc: 1.34 ng/ml



#43 AR-1268-3

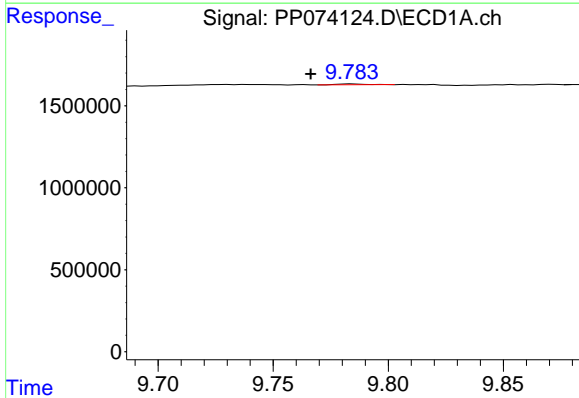
R.T.: 9.316 min
 Delta R.T.: -0.007 min
 Response: 108215
 Conc: 1.12 ng/ml

Instrument :
 ECD_P
 ClientSampleId :
 BC278720-1-2



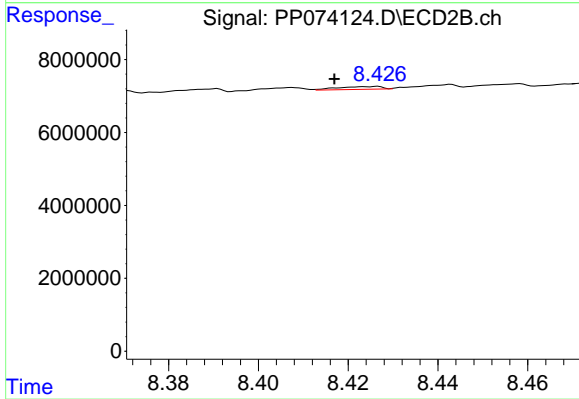
#43 AR-1268-3

R.T.: 8.124 min
 Delta R.T.: 0.004 min
 Response: 1096930
 Conc: 0.68 ng/ml



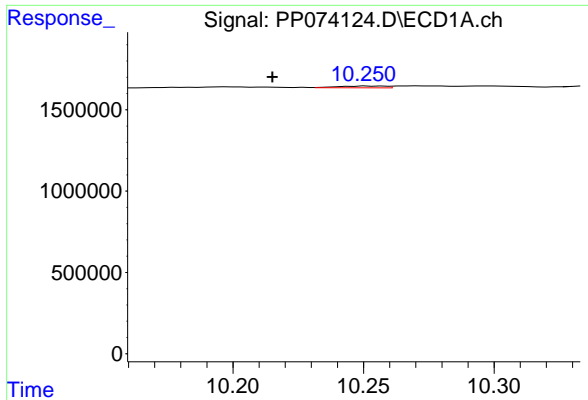
#44 AR-1268-4

R.T.: 9.785 min
 Delta R.T.: 0.018 min
 Response: 42460
 Conc: 0.98 ng/ml



#44 AR-1268-4

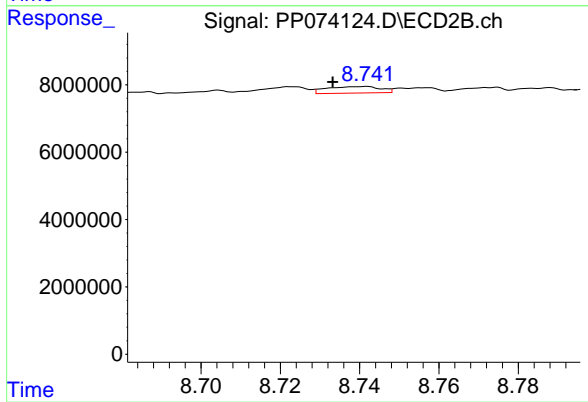
R.T.: 8.425 min
 Delta R.T.: 0.009 min
 Response: 532686
 Conc: 0.80 ng/ml



#45 AR-1268-5

R.T.: 10.251 min
Delta R.T.: 0.036 min
Response: 140088
Conc: 0.49 ng/ml

Instrument :
ECD_P
ClientSampleId :
BC278720-1-2



#45 AR-1268-5

R.T.: 8.741 min
Delta R.T.: 0.008 min
Response: 1833608
Conc: 0.36 ng/ml