

Data Path : Z:\pestpcbsrv\HPCHEM1\ECD_P\Data\PP072925\
 Data File : PP074131.D
 Signal(s) : Signal #1: ECD1A.ch Signal #2: ECD2B.ch
 Acq On : 30 Jul 2025 00:59
 Operator : YP\AJ
 Sample : AR1242CCC500
 Misc :
 ALS Vial : 4 Sample Multiplier: 1

Instrument :
 ECD_P
 ClientSampleId :
 AR1242CCC500

Integration File signal 1: autoint1.e
 Integration File signal 2: autoint2.e
 Quant Time: Jul 30 08:51:16 2025
 Quant Method : Z:\pestpcbsrv\HPCHEM1\ECD_P\methods\PP072525.M
 Quant Title : GC EXTRACTABLES
 QLast Update : Mon Jul 28 18:16:14 2025
 Response via : Initial Calibration
 Integrator: ChemStation

Volume Inj. : 2 µl
 Signal #1 Phase : ZB-MR1 Signal #2 Phase: ZB-MR2
 Signal #1 Info : 30Mx0.32mmx 0.50µ Signal #2 Info : 30M x 0.32mm x 0.25µm

Compound	RT#1	RT#2	Resp#1	Resp#2	ng/ml	ng/ml
System Monitoring Compounds						
1) SA Tetrachlo...	4.730	3.888	52717217	533.6E6	50.467	57.949
2) SA Decachlor...	10.612	9.004	35340908	598.3E6	52.624	52.619
Target Compounds						
3) L1 AR-1016-1	5.888	5.009	16527666	390.2E6	449.671	459.434
4) L1 AR-1016-2	5.888	5.066	16527666	178.0E6	303.235	474.598 #
5) L1 AR-1016-3	5.910	5.188	24051658	103.7E6	693.677	470.320 #
6) L1 AR-1016-4	6.071	5.229	13075821	92540728	472.132	442.651
7) L1 AR-1016-5	6.365	5.447	12669260	105.7E6	470.963	458.278
8) L2 AR-1221-1	4.927	4.104	1948913	14033681	124.452	125.324
9) L2 AR-1221-2	5.018f	4.190	2916906	18658748	245.529	243.649
10) L2 AR-1221-3	5.018f	4.269	2916906	79978207	86.228	278.096 #
11) L3 AR-1232-1	5.018f	4.269	2916906	79978207	105.290	351.981 #
12) L3 AR-1232-2	5.569	5.009	1133702	390.2E6	81.549	1283.505 #
13) L3 AR-1232-3	5.888	5.188	16527666	103.7E6	608.223	1008.650 #
14) L3 AR-1232-4	6.071	5.273	13075821	178.3E6	941.251	1690.344 #
15) L3 AR-1232-5	6.161	5.447	10760466	105.7E6	1101.253	1094.606
16) L4 AR-1242-1	5.888	5.009	16527666	390.2E6	500.627	486.550
17) L4 AR-1242-2	5.888	5.066	16527666	178.0E6	341.954	520.149 #
18) L4 AR-1242-3	5.974	5.188	15707420	103.7E6	515.459	524.782
19) L4 AR-1242-4	6.071	5.273	13075821	178.3E6	540.408	740.878 #
20) L4 AR-1242-5	6.804	5.800	15391049	154.4E6	503.347	540.483
21) L5 AR-1248-1	5.888	5.009	16527666	390.2E6	613.493	779.775 #
22) L5 AR-1248-2	6.161	5.229	10760466	92540728	288.877	297.304
23) L5 AR-1248-3	6.365	5.273	12669260	178.3E6	308.074	514.832 #
24) L5 AR-1248-4	6.739	5.447	9763162	105.7E6	208.618	294.549 #
25) L5 AR-1248-5	6.804	5.842	15391049	170.3E6	286.715	284.637
26) L6 AR-1254-1	6.688	5.800	1286900	154.4E6	25.620	219.848 #
27) L6 AR-1254-2	6.893	5.951	1376769	36669810	19.644	68.458 #
28) L6 AR-1254-3	7.284	6.357	2212590	47879311	30.285	54.708 #
29) L6 AR-1254-4	7.547	6.586	574770	33241934	11.010	48.944 #
30) L6 AR-1254-5	7.976	7.009	205222	11166949	3.397	13.944 #
31) L7 AR-1260-1	7.444	6.678	2526039	4269036	58.757	5.446 #
32) L7 AR-1260-2	7.741	6.835	1016840	7872240	18.574	10.363 #
33) L7 AR-1260-3	8.083	7.059	221354	872905	5.832	1.099 #
34) L7 AR-1260-4	8.318	7.307	575244	579616	12.029	1.009 #
35) L7 AR-1260-5	8.638	7.551	86401	1520412	1.013	0.977
36) L8 AR-1262-1	8.318	7.059	575244	872905	9.274	0.738 #
37) L8 AR-1262-2	8.638	7.307	86401	579616	0.781	0.690
38) L8 AR-1262-3	8.983	7.848	7203	6006783	0.094	7.784 #
39) L8 AR-1262-4	9.071	7.906	173841	2027260	3.031	1.439 #
40) L8 AR-1262-5	9.692f	8.425	39860	498781	1.023	0.793
41) L9 AR-1268-1	8.983	7.848	7203	6006783	0.056	2.686 #

Data Path : Z:\pestpcbsrv\HPCHEM1\ECD_P\Data\PP072925\
 Data File : PP074131.D
 Signal(s) : Signal #1: ECD1A.ch Signal #2: ECD2B.ch
 Acq On : 30 Jul 2025 00:59
 Operator : YP\AJ
 Sample : AR1242CCC500
 Misc :
 ALS Vial : 4 Sample Multiplier: 1

Instrument :
 ECD_P
 ClientSampleId :
 AR1242CCC500

Integration File signal 1: autoint1.e
 Integration File signal 2: autoint2.e
 Quant Time: Jul 30 08:51:16 2025
 Quant Method : Z:\pestpcbsrv\HPCHEM1\ECD_P\methods\PP072525.M
 Quant Title : GC EXTRACTABLES
 QLast Update : Mon Jul 28 18:16:14 2025
 Response via : Initial Calibration
 Integrator: ChemStation

Volume Inj. : 2 µl
 Signal #1 Phase : ZB-MR1 Signal #2 Phase: ZB-MR2
 Signal #1 Info : 30Mx0.32mmx 0.50µ Signal #2 Info : 30M x 0.32mm x 0.25µm

	Compound	RT#1	RT#2	Resp#1	Resp#2	ng/ml	ng/ml
42)	L9 AR-1268-2	9.071	7.906	173841	2027260	1.486	0.937 #
43)	L9 AR-1268-3	9.330	8.121	196042	1239140	2.026	0.772 #
44)	L9 AR-1268-4	0.000	8.425	0	498781	N.D.	0.752 #
45)	L9 AR-1268-5	10.245	8.733	393740	1586301	1.370	0.314 #

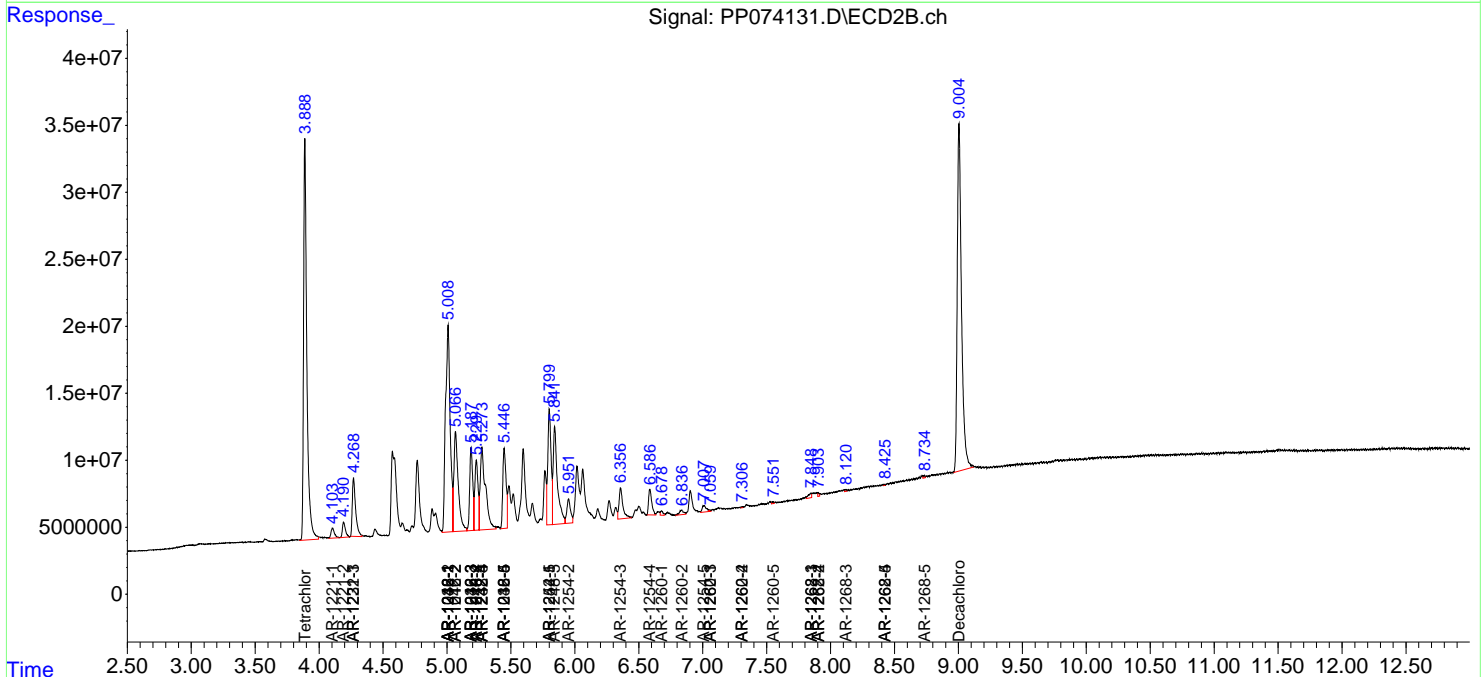
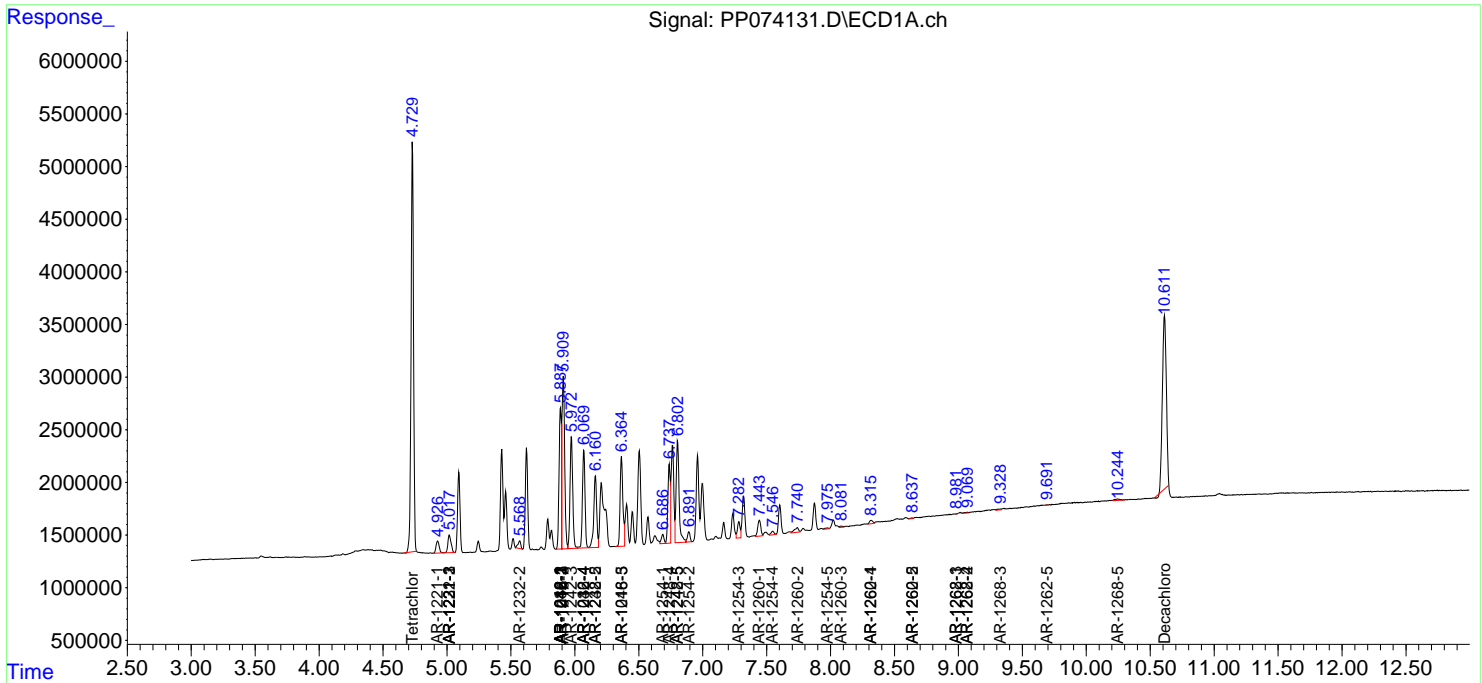
(f)=RT Delta > 1/2 Window (#)=Amounts differ by > 25% (m)=manual int.

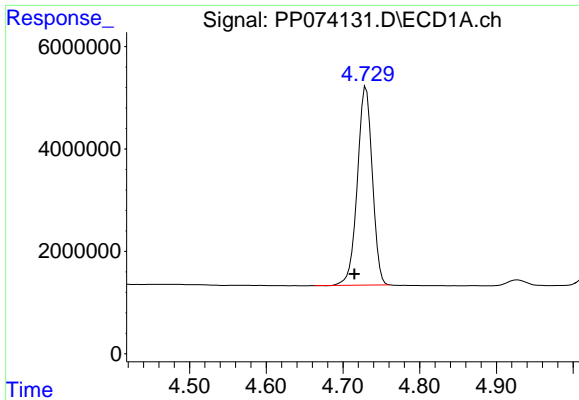
Data Path : Z:\pestpcbsrv\HPCHEM1\ECD_P\Data\PP072925\
 Data File : PP074131.D
 Signal(s) : Signal #1: ECD1A.ch Signal #2: ECD2B.ch
 Acq On : 30 Jul 2025 00:59
 Operator : YP\AJ
 Sample : AR1242CCC500
 Misc :
 ALS Vial : 4 Sample Multiplier: 1

Instrument :
 ECD_P
 ClientSampleId :
 AR1242CCC500

Integration File signal 1: autoint1.e
 Integration File signal 2: autoint2.e
 Quant Time: Jul 30 08:51:16 2025
 Quant Method : Z:\pestpcbsrv\HPCHEM1\ECD_P\methods\PP072525.M
 Quant Title : GC EXTRACTABLES
 QLast Update : Mon Jul 28 18:16:14 2025
 Response via : Initial Calibration
 Integrator: ChemStation

Volume Inj. : 2 µl
 Signal #1 Phase : ZB-MR1 Signal #2 Phase: ZB-MR2
 Signal #1 Info : 30Mx0.32mmx 0.50µ Signal #2 Info : 30M x 0.32mm x 0.25µm

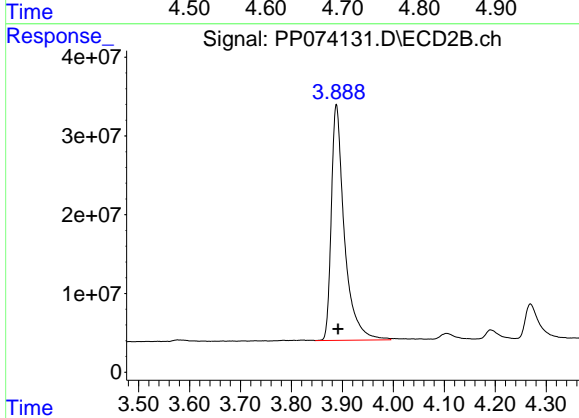




#1 Tetrachloro-m-xylene

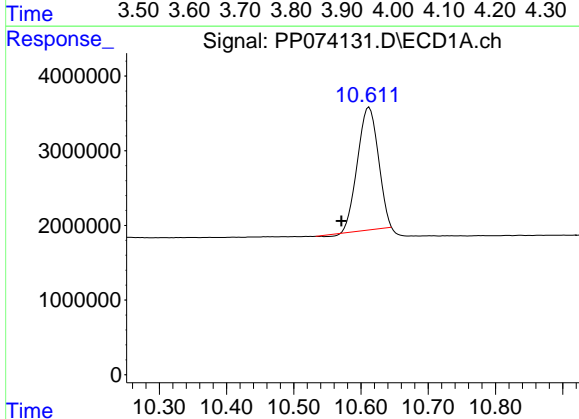
R.T.: 4.730 min
 Delta R.T.: 0.015 min
 Response: 52717217
 Conc: 50.47 ng/ml

Instrument :
 ECD_P
 ClientSampleId :
 AR1242CCC500



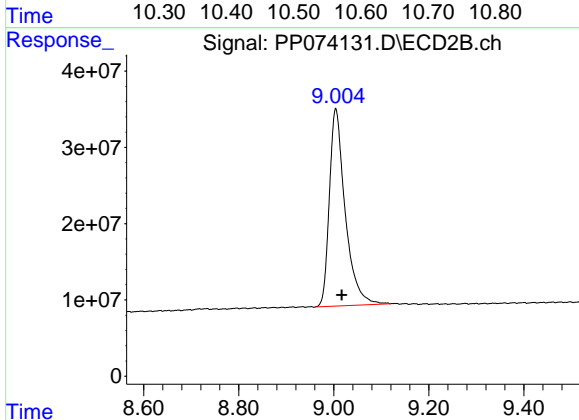
#1 Tetrachloro-m-xylene

R.T.: 3.888 min
 Delta R.T.: -0.003 min
 Response: 533626672
 Conc: 57.95 ng/ml



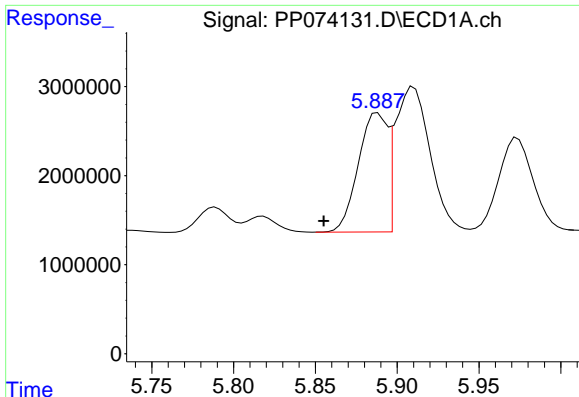
#2 Decachlorobiphenyl

R.T.: 10.612 min
 Delta R.T.: 0.041 min
 Response: 35340908
 Conc: 52.62 ng/ml



#2 Decachlorobiphenyl

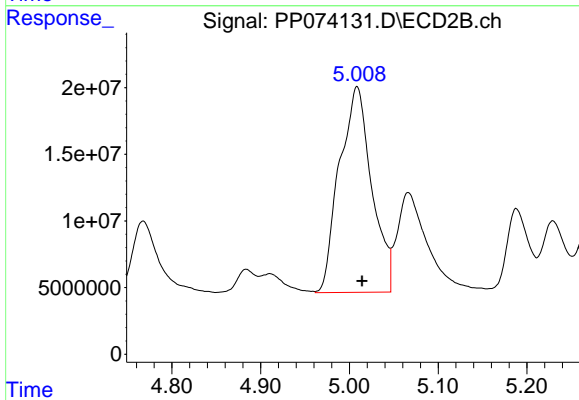
R.T.: 9.004 min
 Delta R.T.: -0.012 min
 Response: 598305310
 Conc: 52.62 ng/ml



#3 AR-1016-1

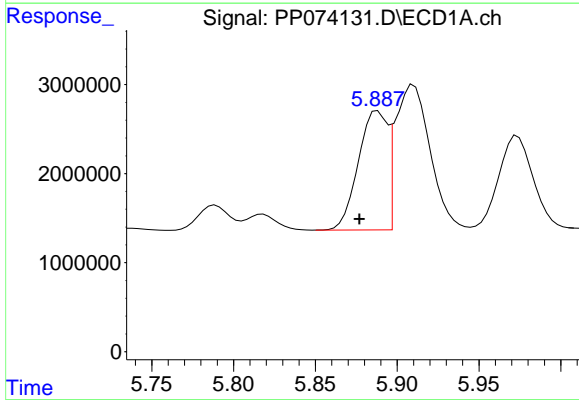
R.T.: 5.888 min
 Delta R.T.: 0.033 min
 Response: 16527666
 Conc: 449.67 ng/ml

Instrument :
 ECD_P
 ClientSampleId :
 AR1242CCC500



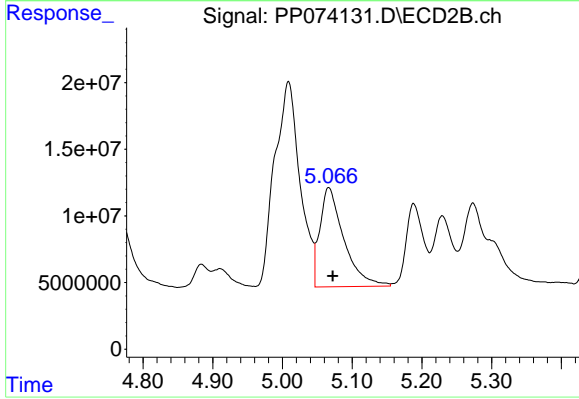
#3 AR-1016-1

R.T.: 5.009 min
 Delta R.T.: -0.006 min
 Response: 390178582
 Conc: 459.43 ng/ml



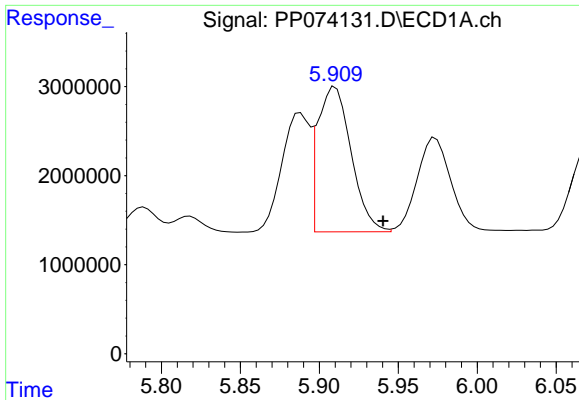
#4 AR-1016-2

R.T.: 5.888 min
 Delta R.T.: 0.011 min
 Response: 16527666
 Conc: 303.24 ng/ml



#4 AR-1016-2

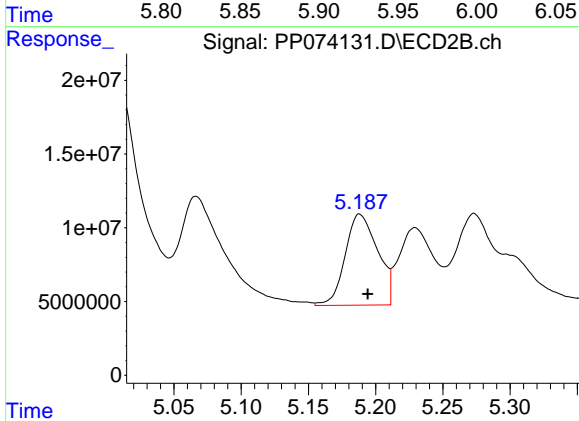
R.T.: 5.066 min
 Delta R.T.: -0.006 min
 Response: 178031244
 Conc: 474.60 ng/ml



#5 AR-1016-3

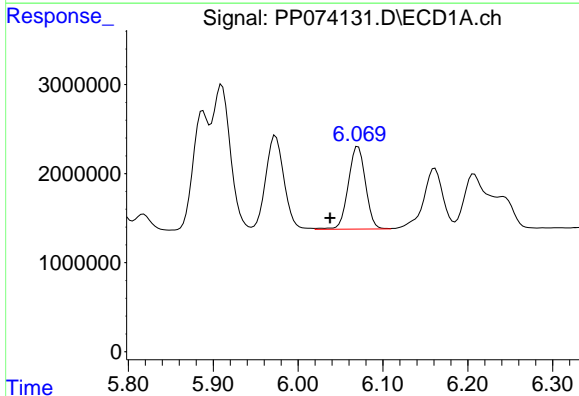
R.T.: 5.910 min
 Delta R.T.: -0.030 min
 Response: 24051658
 Conc: 693.68 ng/ml

Instrument :
 ECD_P
 ClientSampleId :
 AR1242CCC500



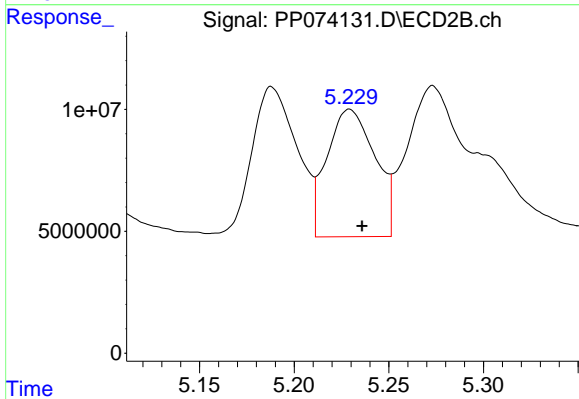
#5 AR-1016-3

R.T.: 5.188 min
 Delta R.T.: -0.006 min
 Response: 103653421
 Conc: 470.32 ng/ml



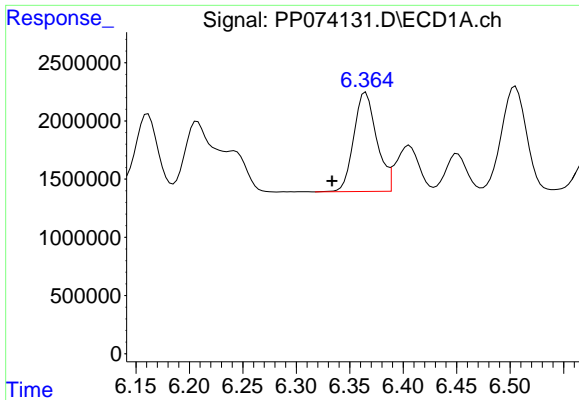
#6 AR-1016-4

R.T.: 6.071 min
 Delta R.T.: 0.033 min
 Response: 13075821
 Conc: 472.13 ng/ml



#6 AR-1016-4

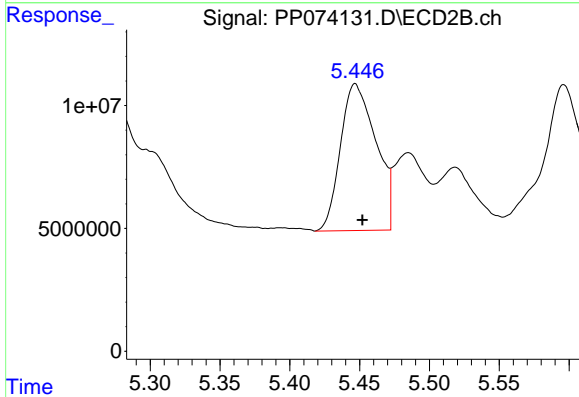
R.T.: 5.229 min
 Delta R.T.: -0.007 min
 Response: 92540728
 Conc: 442.65 ng/ml



#7 AR-1016-5

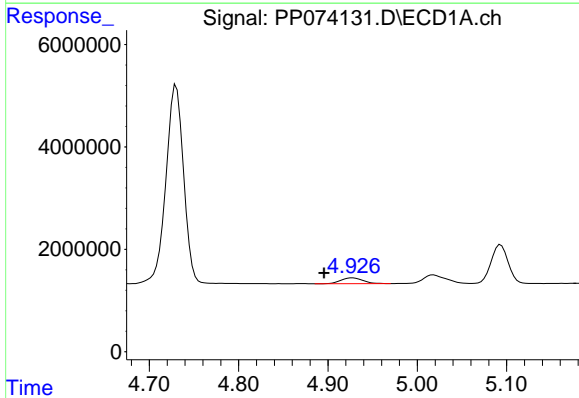
R.T.: 6.365 min
 Delta R.T.: 0.032 min
 Response: 12669260
 Conc: 470.96 ng/ml

Instrument :
 ECD_P
 ClientSampleId :
 AR1242CCC500



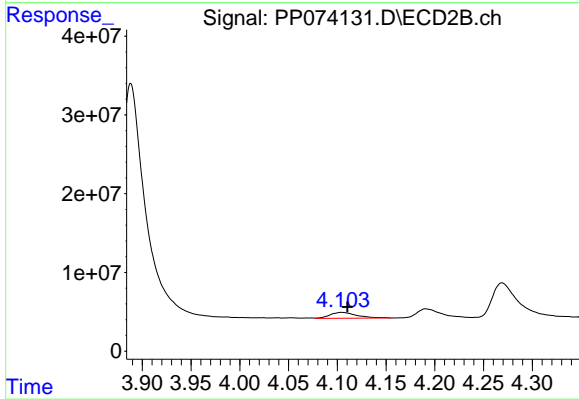
#7 AR-1016-5

R.T.: 5.447 min
 Delta R.T.: -0.005 min
 Response: 105674935
 Conc: 458.28 ng/ml



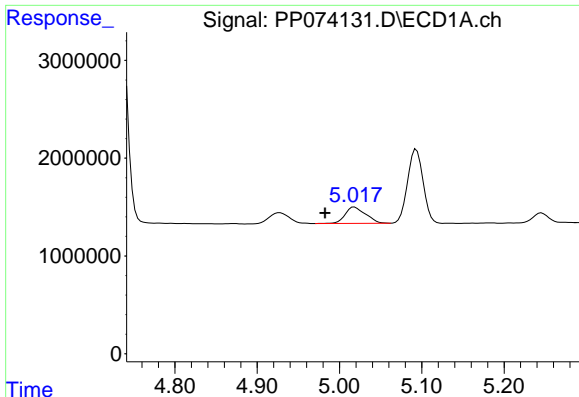
#8 AR-1221-1

R.T.: 4.927 min
 Delta R.T.: 0.032 min
 Response: 1948913
 Conc: 124.45 ng/ml



#8 AR-1221-1

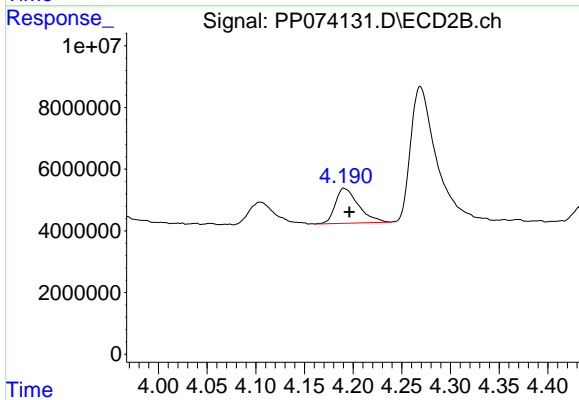
R.T.: 4.104 min
 Delta R.T.: -0.006 min
 Response: 14033681
 Conc: 125.32 ng/ml



#9 AR-1221-2

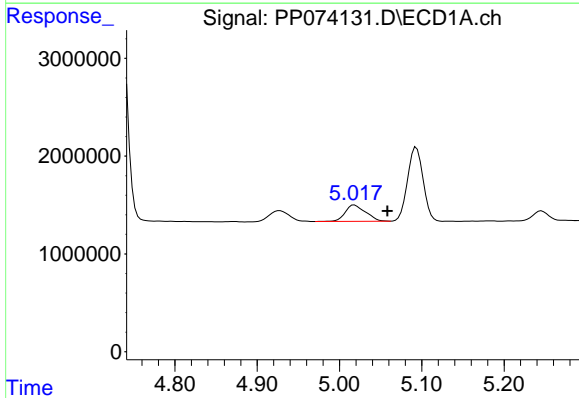
R.T.: 5.018 min
 Delta R.T.: 0.036 min
 Response: 2916906
 Conc: 245.53 ng/ml

Instrument :
 ECD_P
 ClientSampleId :
 AR1242CCC500



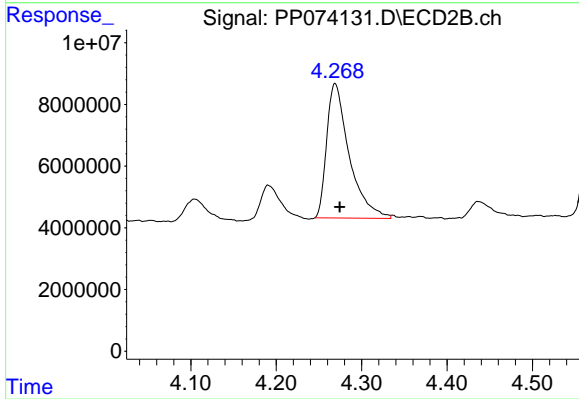
#9 AR-1221-2

R.T.: 4.190 min
 Delta R.T.: -0.006 min
 Response: 18658748
 Conc: 243.65 ng/ml



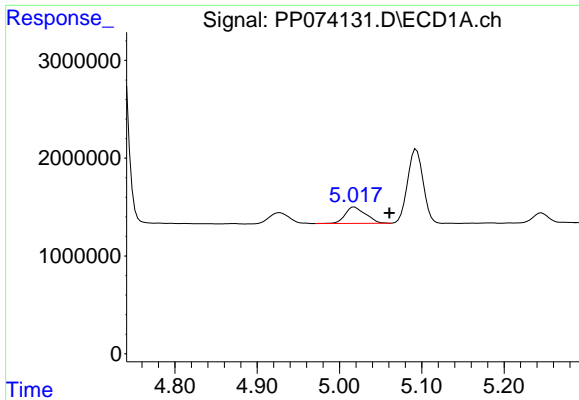
#10 AR-1221-3

R.T.: 5.018 min
 Delta R.T.: -0.040 min
 Response: 2916906
 Conc: 86.23 ng/ml



#10 AR-1221-3

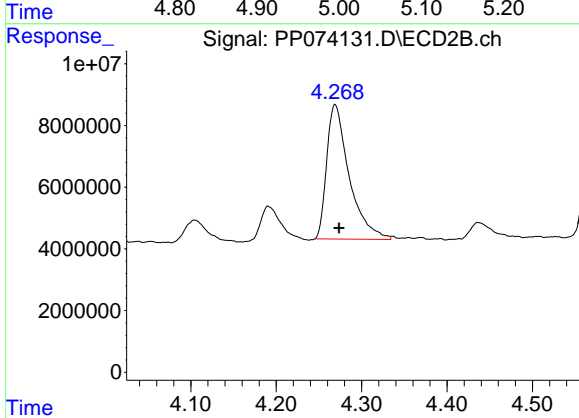
R.T.: 4.269 min
 Delta R.T.: -0.005 min
 Response: 79978207
 Conc: 278.10 ng/ml



#11 AR-1232-1

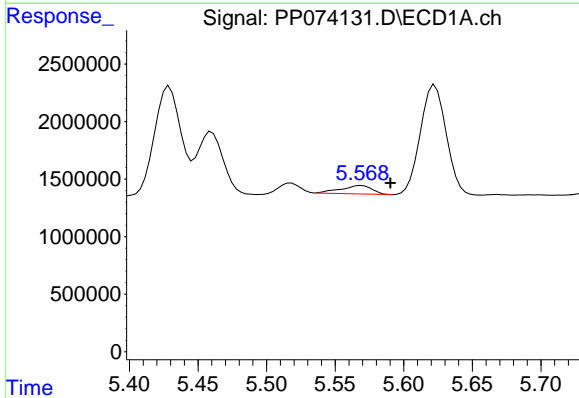
R.T.: 5.018 min
 Delta R.T.: -0.042 min
 Response: 2916906
 Conc: 105.29 ng/ml

Instrument :
 ECD_P
 ClientSampleId :
 AR1242CCC500



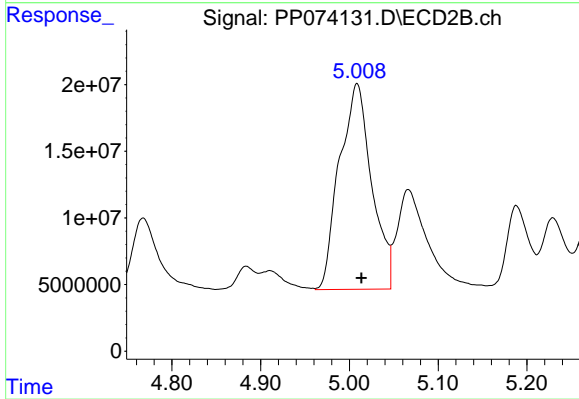
#11 AR-1232-1

R.T.: 4.269 min
 Delta R.T.: -0.005 min
 Response: 79978207
 Conc: 351.98 ng/ml



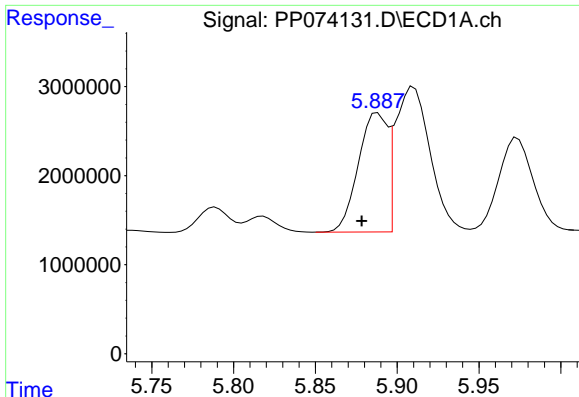
#12 AR-1232-2

R.T.: 5.569 min
 Delta R.T.: -0.021 min
 Response: 1133702
 Conc: 81.55 ng/ml



#12 AR-1232-2

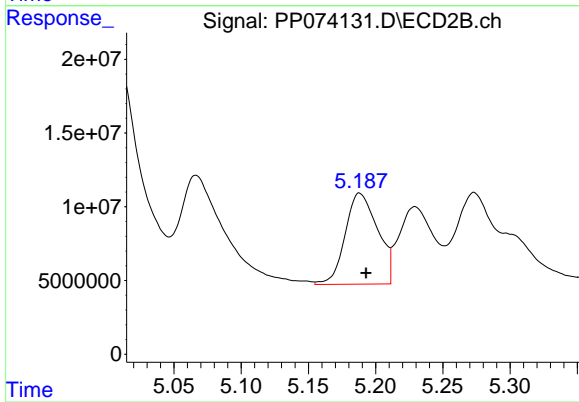
R.T.: 5.009 min
 Delta R.T.: -0.005 min
 Response: 390178582
 Conc: 1283.50 ng/ml



#13 AR-1232-3

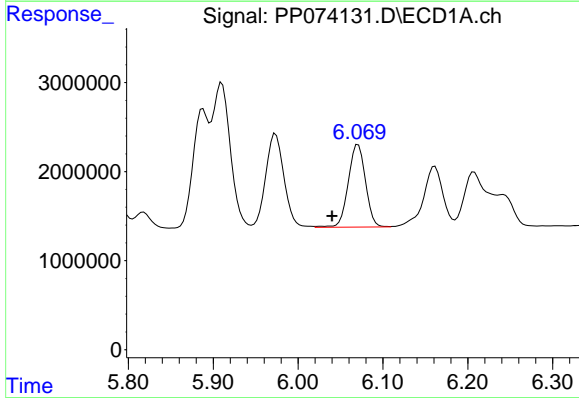
R.T.: 5.888 min
 Delta R.T.: 0.010 min
 Response: 16527666
 Conc: 608.22 ng/ml

Instrument :
 ECD_P
 ClientSampleId :
 AR1242CCC500



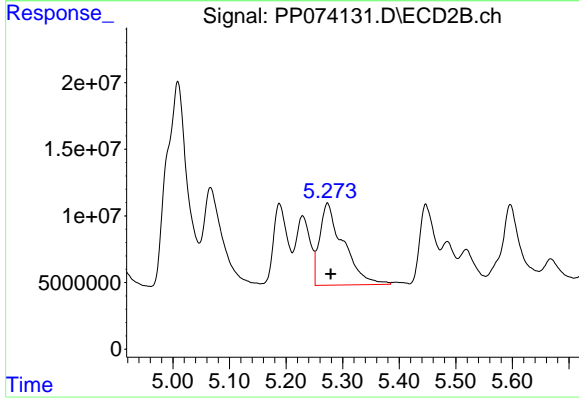
#13 AR-1232-3

R.T.: 5.188 min
 Delta R.T.: -0.005 min
 Response: 103653421
 Conc: 1008.65 ng/ml



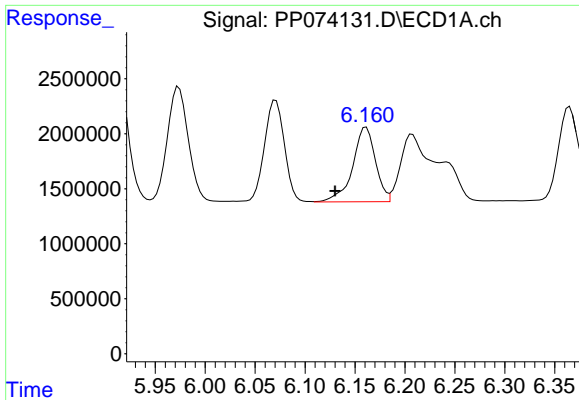
#14 AR-1232-4

R.T.: 6.071 min
 Delta R.T.: 0.031 min
 Response: 13075821
 Conc: 941.25 ng/ml



#14 AR-1232-4

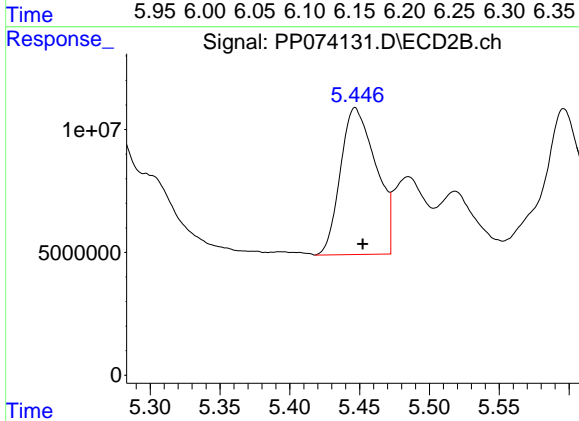
R.T.: 5.273 min
 Delta R.T.: -0.006 min
 Response: 178340815
 Conc: 1690.34 ng/ml



#15 AR-1232-5

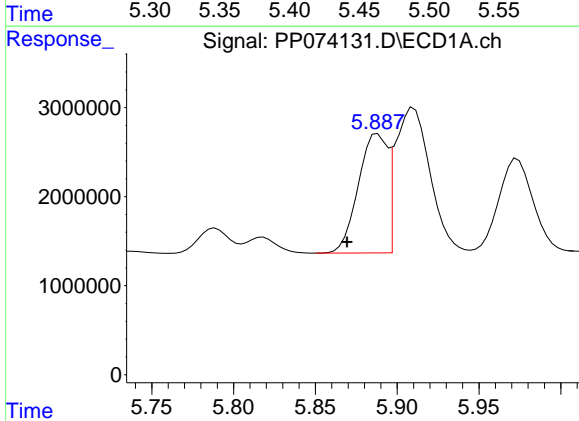
R.T.: 6.161 min
 Delta R.T.: 0.031 min
 Response: 10760466
 Conc: 1101.25 ng/ml

Instrument :
 ECD_P
 ClientSampleId :
 AR1242CCC500



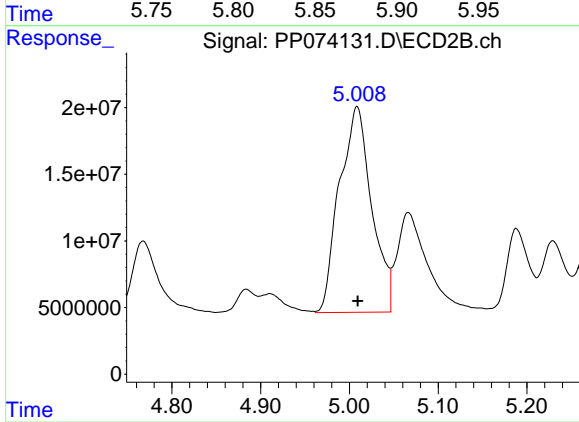
#15 AR-1232-5

R.T.: 5.447 min
 Delta R.T.: -0.006 min
 Response: 105674935
 Conc: 1094.61 ng/ml



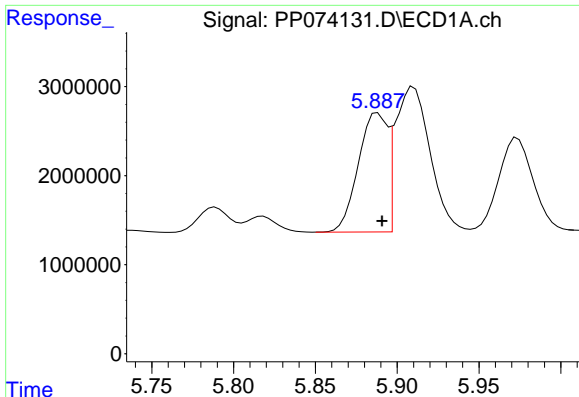
#16 AR-1242-1

R.T.: 5.888 min
 Delta R.T.: 0.019 min
 Response: 16527666
 Conc: 500.63 ng/ml



#16 AR-1242-1

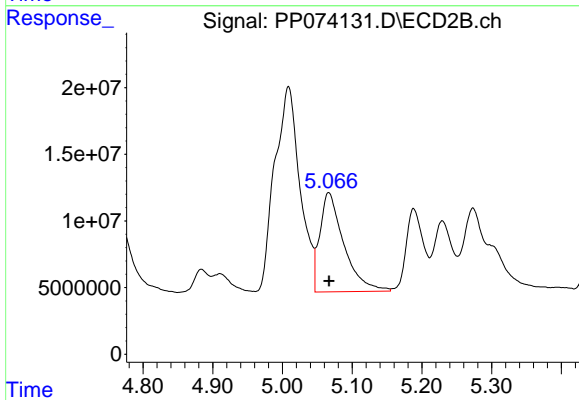
R.T.: 5.009 min
 Delta R.T.: 0.000 min
 Response: 390178582
 Conc: 486.55 ng/ml



#17 AR-1242-2

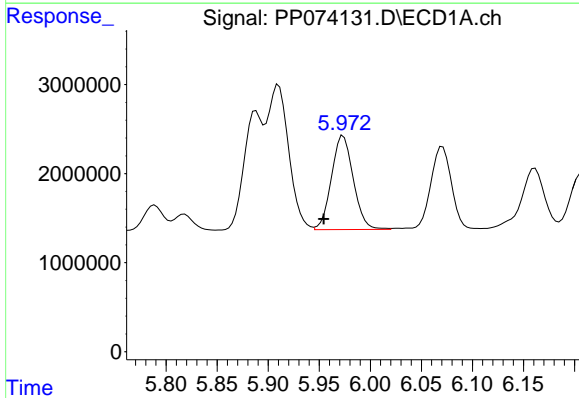
R.T.: 5.888 min
 Delta R.T.: -0.003 min
 Response: 16527666
 Conc: 341.95 ng/ml

Instrument :
 ECD_P
 ClientSampleId :
 AR1242CCC500



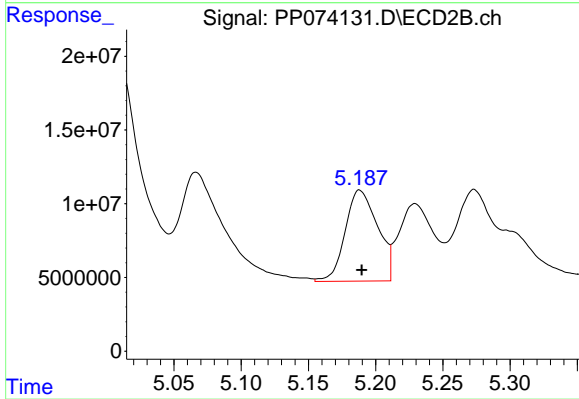
#17 AR-1242-2

R.T.: 5.066 min
 Delta R.T.: 0.000 min
 Response: 178031244
 Conc: 520.15 ng/ml



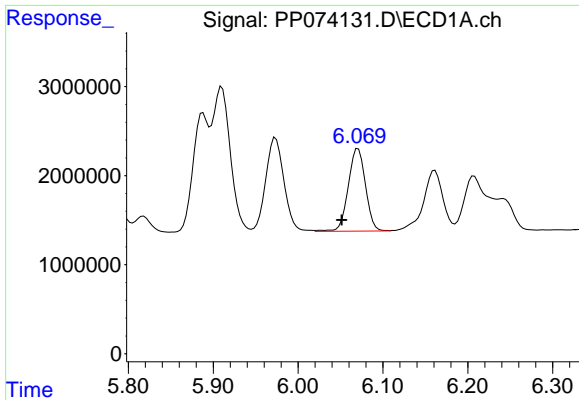
#18 AR-1242-3

R.T.: 5.974 min
 Delta R.T.: 0.019 min
 Response: 15707420
 Conc: 515.46 ng/ml



#18 AR-1242-3

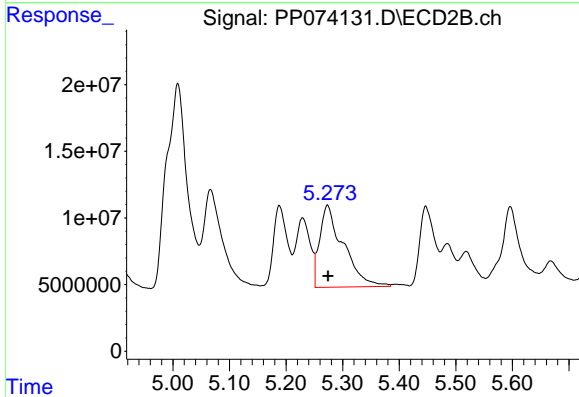
R.T.: 5.188 min
 Delta R.T.: -0.002 min
 Response: 103653421
 Conc: 524.78 ng/ml



#19 AR-1242-4

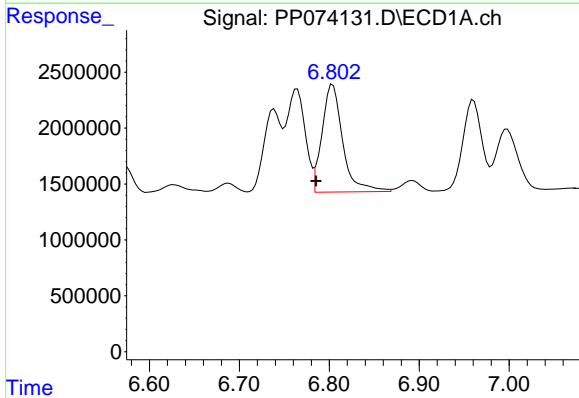
R.T.: 6.071 min
 Delta R.T.: 0.019 min
 Response: 13075821
 Conc: 540.41 ng/ml

Instrument :
 ECD_P
 ClientSampleId :
 AR1242CCC500



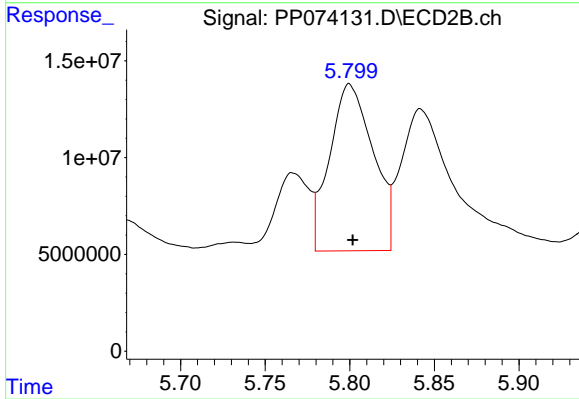
#19 AR-1242-4

R.T.: 5.273 min
 Delta R.T.: 0.000 min
 Response: 178340815
 Conc: 740.88 ng/ml



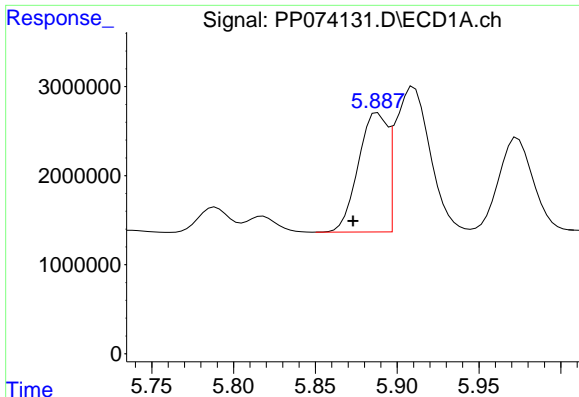
#20 AR-1242-5

R.T.: 6.804 min
 Delta R.T.: 0.019 min
 Response: 15391049
 Conc: 503.35 ng/ml



#20 AR-1242-5

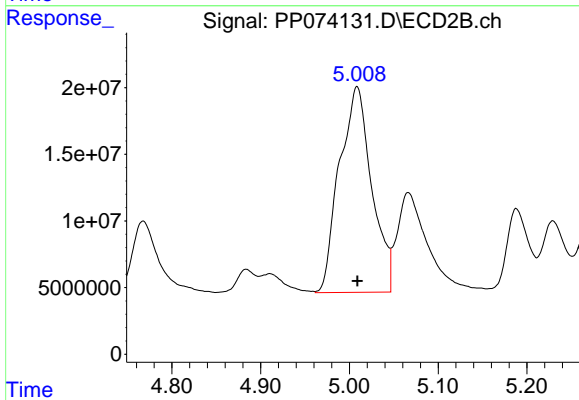
R.T.: 5.800 min
 Delta R.T.: -0.002 min
 Response: 154361510
 Conc: 540.48 ng/ml



#21 AR-1248-1

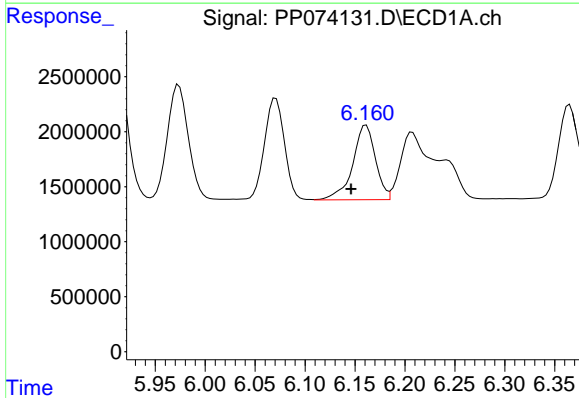
R.T.: 5.888 min
 Delta R.T.: 0.015 min
 Response: 16527666
 Conc: 613.49 ng/ml

Instrument :
 ECD_P
 ClientSampleId :
 AR1242CCC500



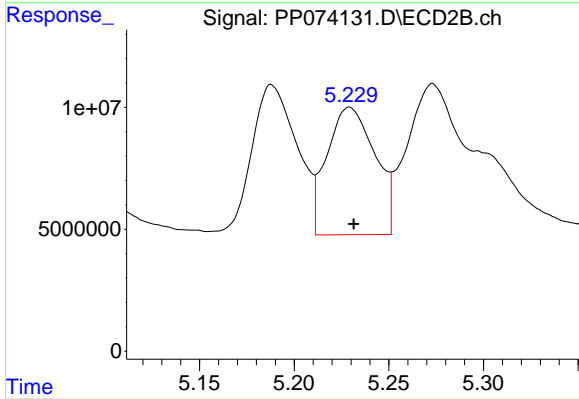
#21 AR-1248-1

R.T.: 5.009 min
 Delta R.T.: 0.000 min
 Response: 390178582
 Conc: 779.77 ng/ml



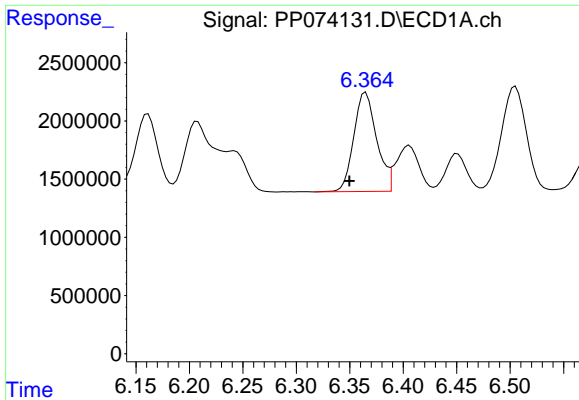
#22 AR-1248-2

R.T.: 6.161 min
 Delta R.T.: 0.015 min
 Response: 10760466
 Conc: 288.88 ng/ml



#22 AR-1248-2

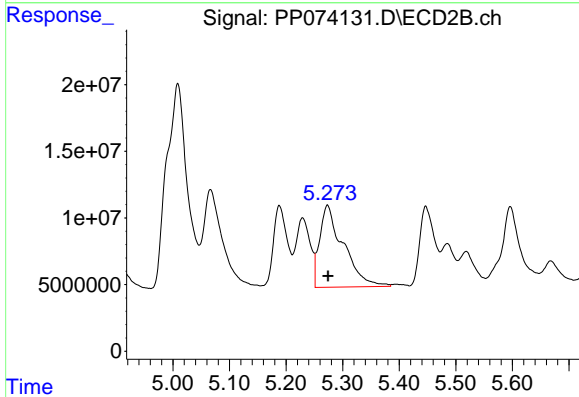
R.T.: 5.229 min
 Delta R.T.: -0.002 min
 Response: 92540728
 Conc: 297.30 ng/ml



#23 AR-1248-3

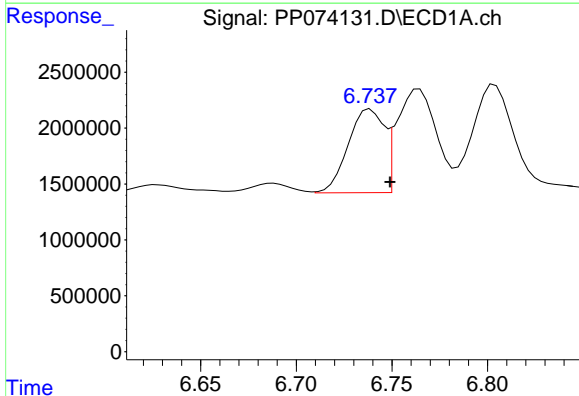
R.T.: 6.365 min
 Delta R.T.: 0.015 min
 Response: 12669260
 Conc: 308.07 ng/ml

Instrument :
 ECD_P
 ClientSampleId :
 AR1242CCC500



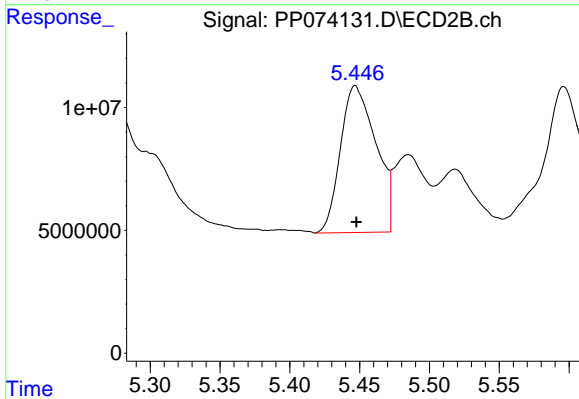
#23 AR-1248-3

R.T.: 5.273 min
 Delta R.T.: -0.001 min
 Response: 178340815
 Conc: 514.83 ng/ml



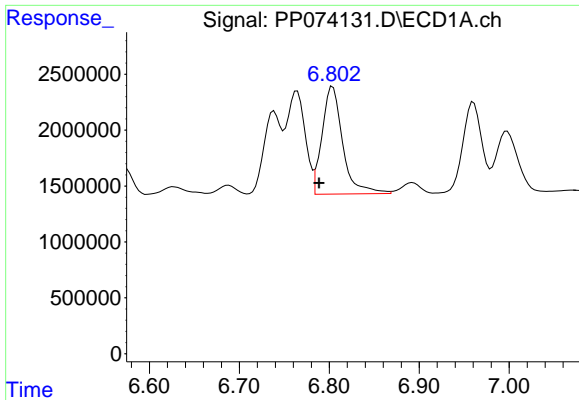
#24 AR-1248-4

R.T.: 6.739 min
 Delta R.T.: -0.010 min
 Response: 9763162
 Conc: 208.62 ng/ml



#24 AR-1248-4

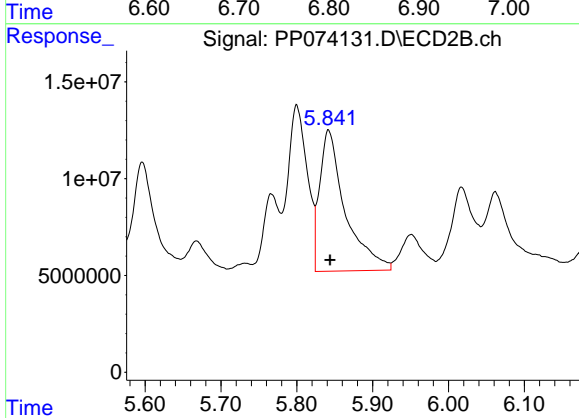
R.T.: 5.447 min
 Delta R.T.: -0.001 min
 Response: 105674935
 Conc: 294.55 ng/ml



#25 AR-1248-5

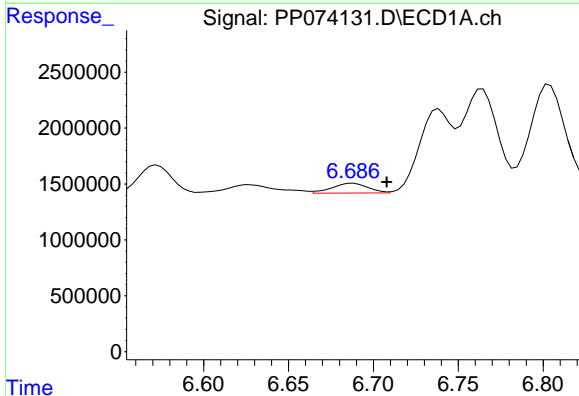
R.T.: 6.804 min
 Delta R.T.: 0.015 min
 Response: 15391049
 Conc: 286.71 ng/ml

Instrument :
 ECD_P
 ClientSampleId :
 AR1242CCC500



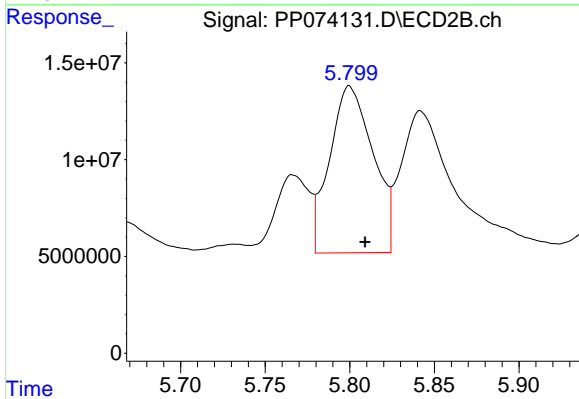
#25 AR-1248-5

R.T.: 5.842 min
 Delta R.T.: -0.002 min
 Response: 170334777
 Conc: 284.64 ng/ml



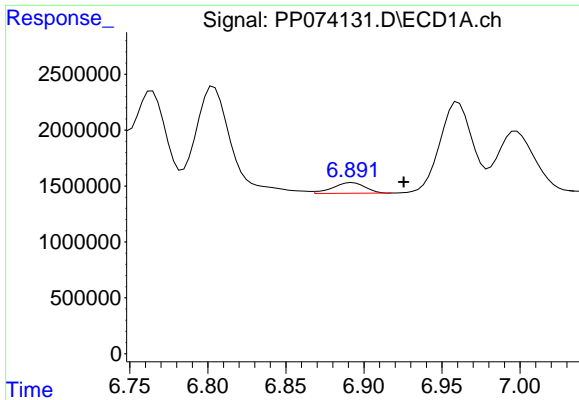
#26 AR-1254-1

R.T.: 6.688 min
 Delta R.T.: -0.020 min
 Response: 1286900
 Conc: 25.62 ng/ml



#26 AR-1254-1

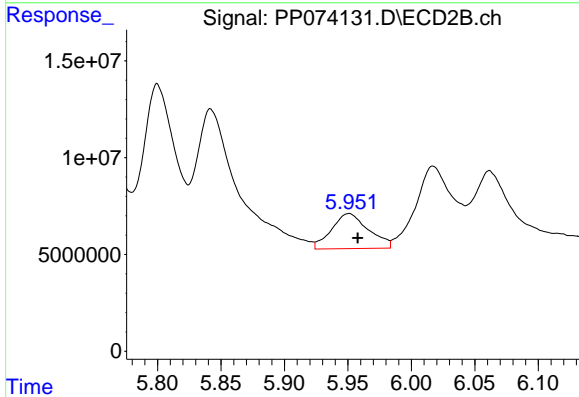
R.T.: 5.800 min
 Delta R.T.: -0.009 min
 Response: 154361510
 Conc: 219.85 ng/ml



#27 AR-1254-2

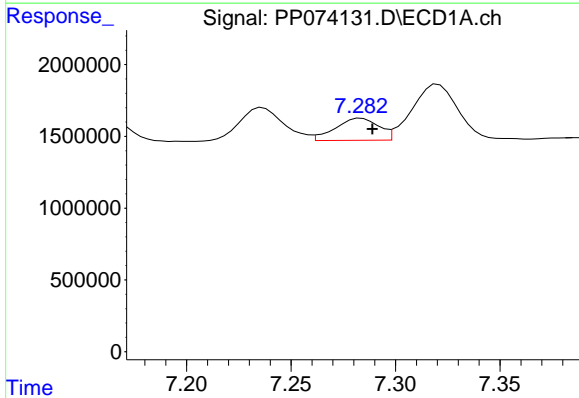
R.T.: 6.893 min
 Delta R.T.: -0.033 min
 Response: 1376769
 Conc: 19.64 ng/ml

Instrument :
 ECD_P
 ClientSampleId :
 AR1242CCC500



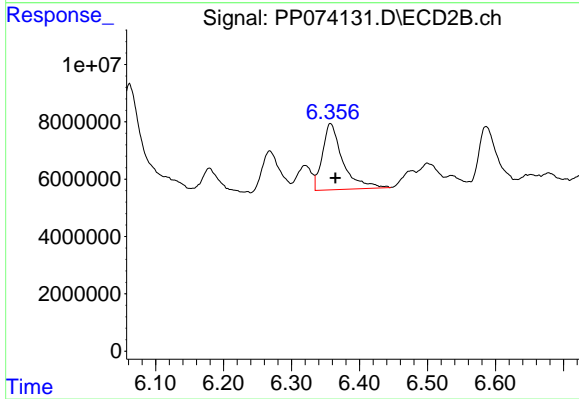
#27 AR-1254-2

R.T.: 5.951 min
 Delta R.T.: -0.007 min
 Response: 36669810
 Conc: 68.46 ng/ml



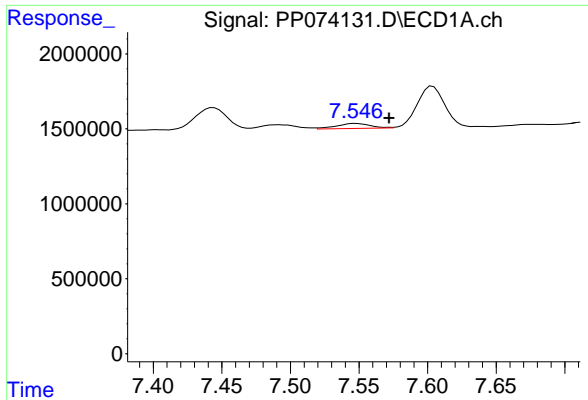
#28 AR-1254-3

R.T.: 7.284 min
 Delta R.T.: -0.005 min
 Response: 2212590
 Conc: 30.28 ng/ml



#28 AR-1254-3

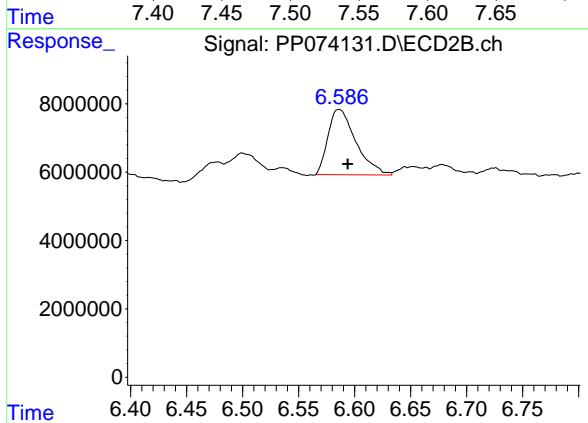
R.T.: 6.357 min
 Delta R.T.: -0.007 min
 Response: 47879311
 Conc: 54.71 ng/ml



#29 AR-1254-4

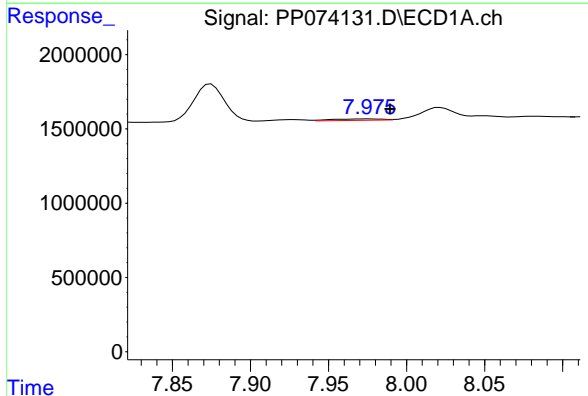
R.T.: 7.547 min
 Delta R.T.: -0.025 min
 Response: 574770
 Conc: 11.01 ng/ml

Instrument :
 ECD_P
 ClientSampleId :
 AR1242CCC500



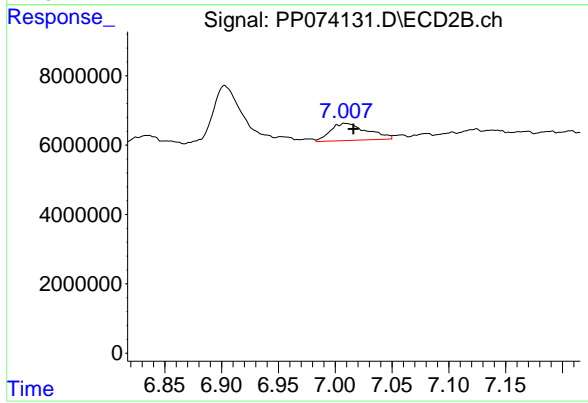
#29 AR-1254-4

R.T.: 6.586 min
 Delta R.T.: -0.008 min
 Response: 33241934
 Conc: 48.94 ng/ml



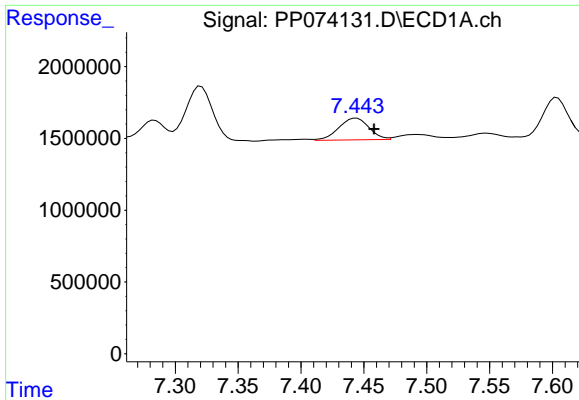
#30 AR-1254-5

R.T.: 7.976 min
 Delta R.T.: -0.013 min
 Response: 205222
 Conc: 3.40 ng/ml



#30 AR-1254-5

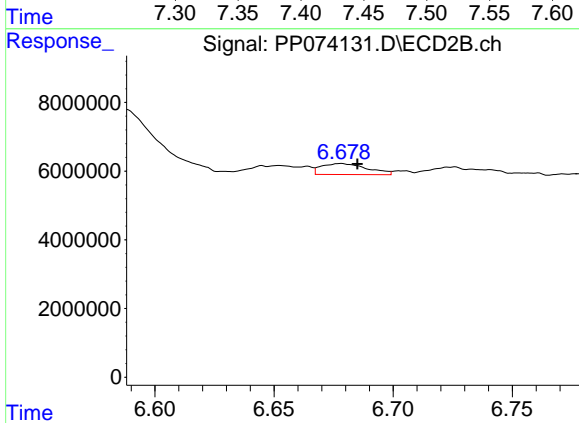
R.T.: 7.009 min
 Delta R.T.: -0.007 min
 Response: 11166949
 Conc: 13.94 ng/ml



#31 AR-1260-1

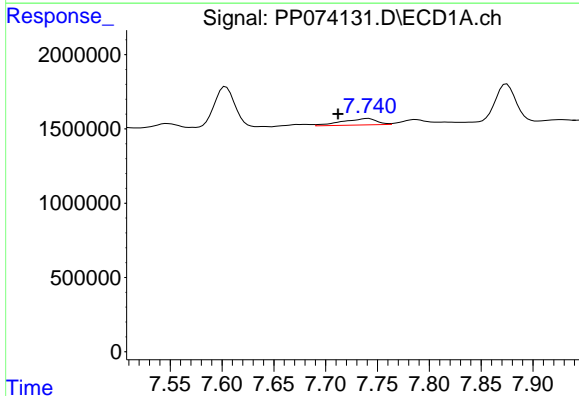
R.T.: 7.444 min
 Delta R.T.: -0.014 min
 Response: 2526039
 Conc: 58.76 ng/ml

Instrument :
 ECD_P
 ClientSampleId :
 AR1242CCC500



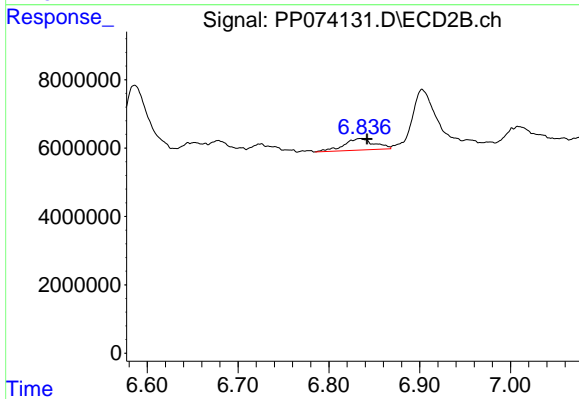
#31 AR-1260-1

R.T.: 6.678 min
 Delta R.T.: -0.007 min
 Response: 4269036
 Conc: 5.45 ng/ml



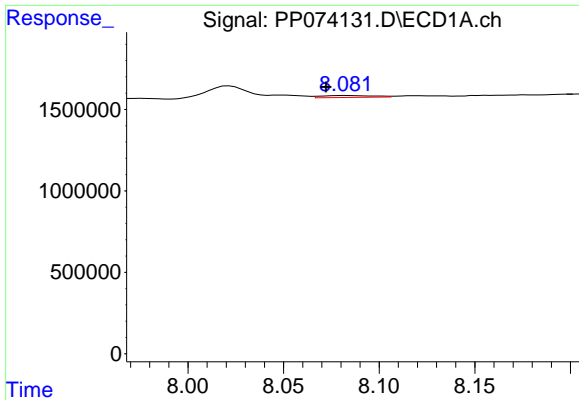
#32 AR-1260-2

R.T.: 7.741 min
 Delta R.T.: 0.029 min
 Response: 1016840
 Conc: 18.57 ng/ml



#32 AR-1260-2

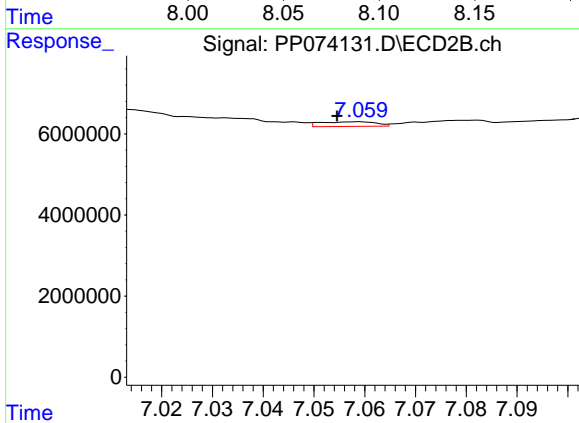
R.T.: 6.835 min
 Delta R.T.: -0.007 min
 Response: 7872240
 Conc: 10.36 ng/ml



#33 AR-1260-3

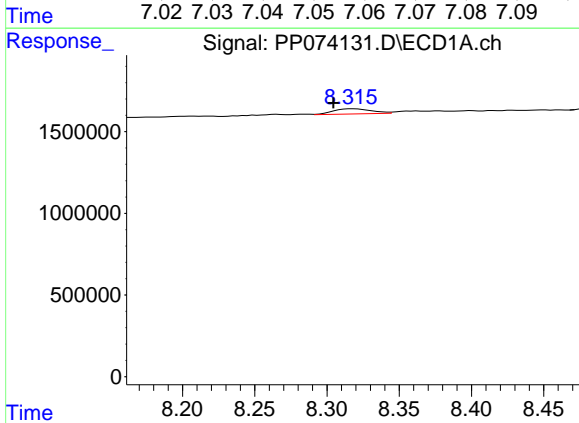
R.T.: 8.083 min
 Delta R.T.: 0.011 min
 Response: 221354
 Conc: 5.83 ng/ml

Instrument :
 ECD_P
 ClientSampleId :
 AR1242CCC500



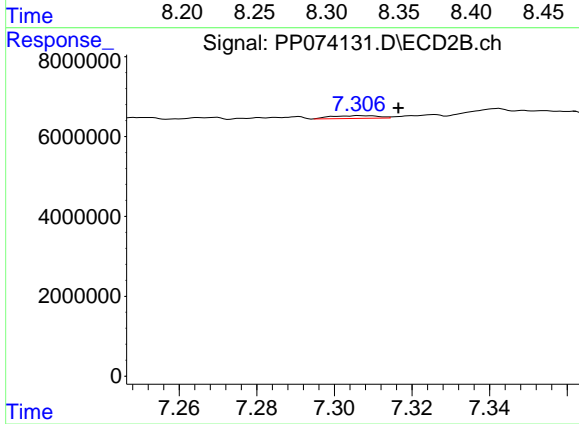
#33 AR-1260-3

R.T.: 7.059 min
 Delta R.T.: 0.004 min
 Response: 872905
 Conc: 1.10 ng/ml



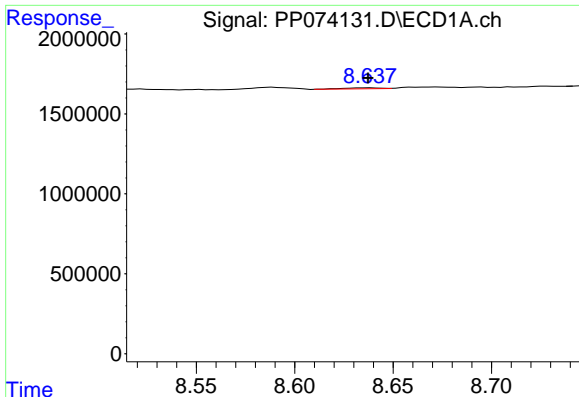
#34 AR-1260-4

R.T.: 8.318 min
 Delta R.T.: 0.013 min
 Response: 575244
 Conc: 12.03 ng/ml



#34 AR-1260-4

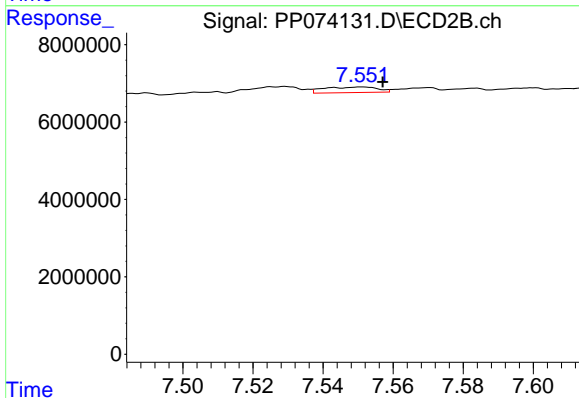
R.T.: 7.307 min
 Delta R.T.: -0.009 min
 Response: 579616
 Conc: 1.01 ng/ml



#35 AR-1260-5

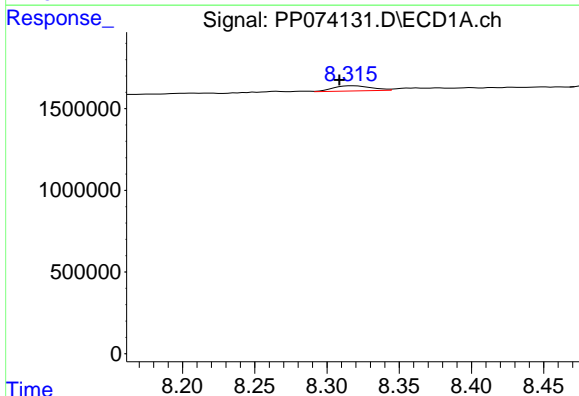
R.T.: 8.638 min
 Delta R.T.: 0.000 min
 Response: 86401
 Conc: 1.01 ng/ml

Instrument :
 ECD_P
 ClientSampleId :
 AR1242CCC500



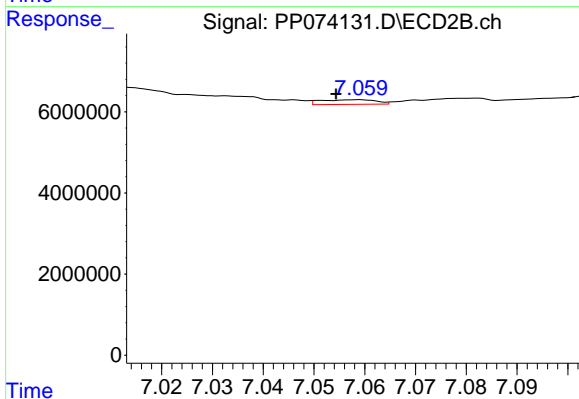
#35 AR-1260-5

R.T.: 7.551 min
 Delta R.T.: -0.006 min
 Response: 1520412
 Conc: 0.98 ng/ml



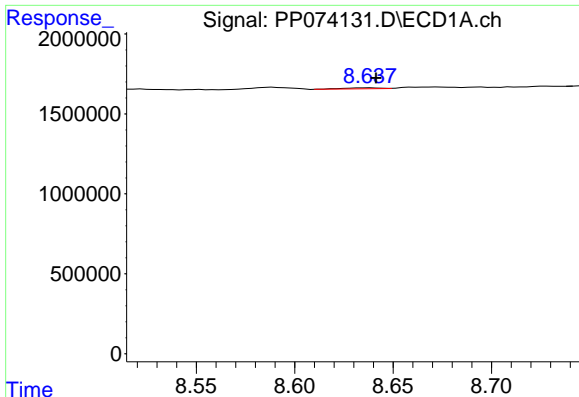
#36 AR-1262-1

R.T.: 8.318 min
 Delta R.T.: 0.009 min
 Response: 575244
 Conc: 9.27 ng/ml



#36 AR-1262-1

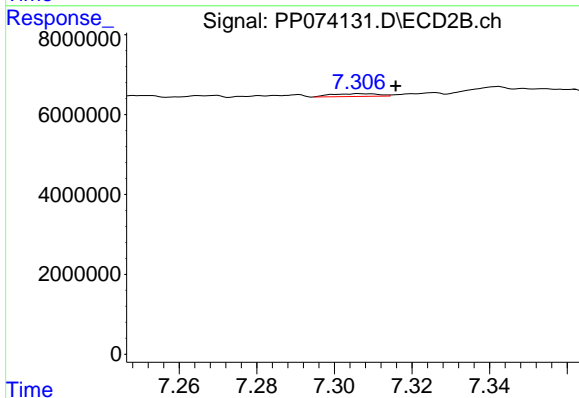
R.T.: 7.059 min
 Delta R.T.: 0.004 min
 Response: 872905
 Conc: 0.74 ng/ml



#37 AR-1262-2

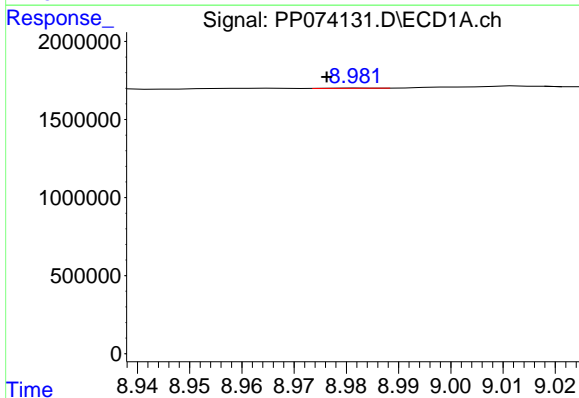
R.T.: 8.638 min
 Delta R.T.: -0.003 min
 Response: 86401
 Conc: 0.78 ng/ml

Instrument :
 ECD_P
 ClientSampleId :
 AR1242CCC500



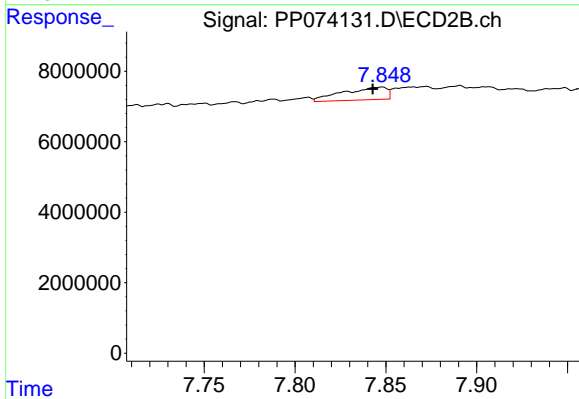
#37 AR-1262-2

R.T.: 7.307 min
 Delta R.T.: -0.009 min
 Response: 579616
 Conc: 0.69 ng/ml



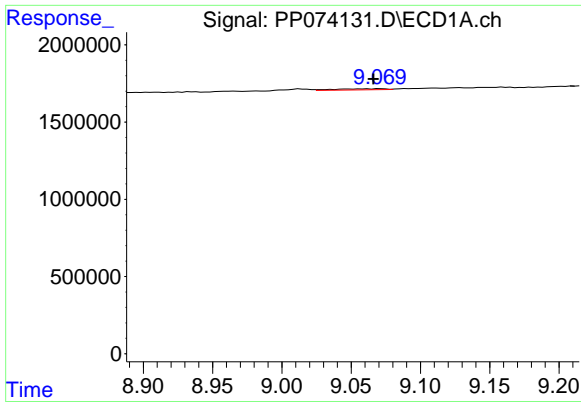
#38 AR-1262-3

R.T.: 8.983 min
 Delta R.T.: 0.006 min
 Response: 7203
 Conc: 0.09 ng/ml



#38 AR-1262-3

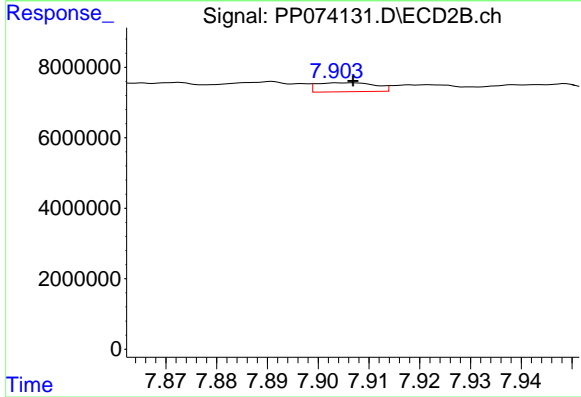
R.T.: 7.848 min
 Delta R.T.: 0.005 min
 Response: 6006783
 Conc: 7.78 ng/ml



#39 AR-1262-4

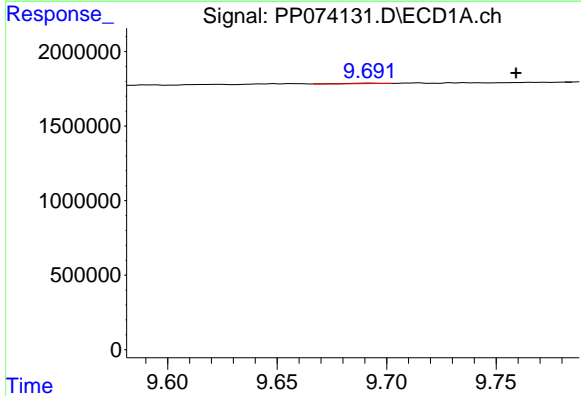
R.T.: 9.071 min
 Delta R.T.: 0.005 min
 Response: 173841
 Conc: 3.03 ng/ml

Instrument :
 ECD_P
 ClientSampleId :
 AR1242CCC500



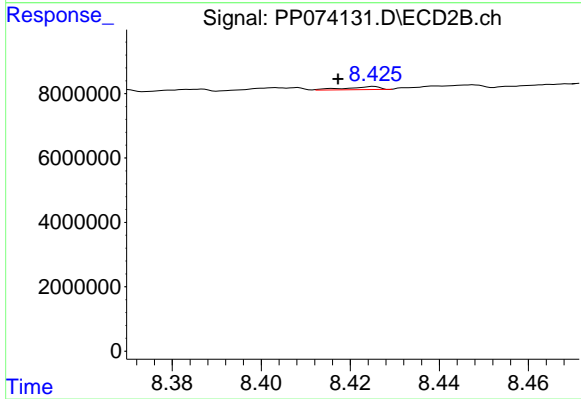
#39 AR-1262-4

R.T.: 7.906 min
 Delta R.T.: -0.001 min
 Response: 2027260
 Conc: 1.44 ng/ml



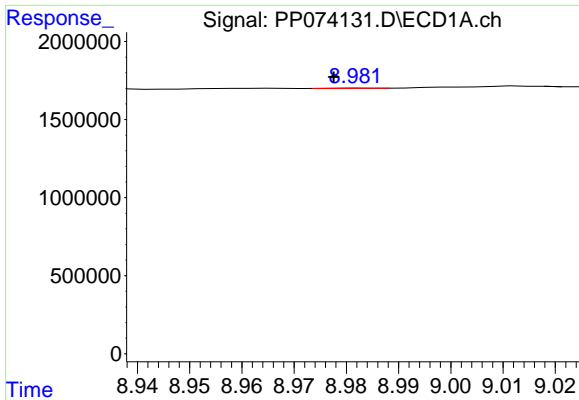
#40 AR-1262-5

R.T.: 9.692 min
 Delta R.T.: -0.067 min
 Response: 39860
 Conc: 1.02 ng/ml



#40 AR-1262-5

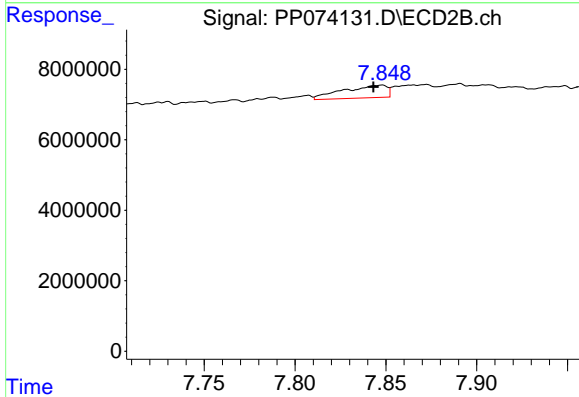
R.T.: 8.425 min
 Delta R.T.: 0.008 min
 Response: 498781
 Conc: 0.79 ng/ml



#41 AR-1268-1

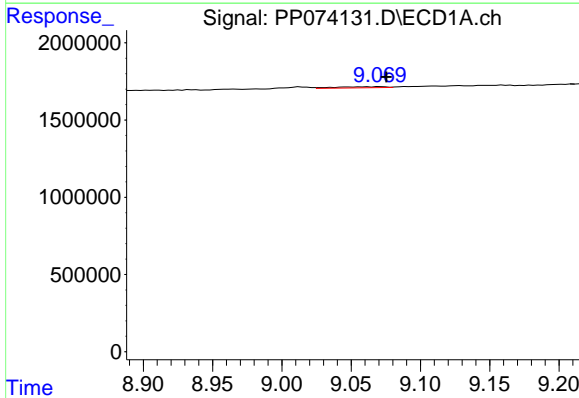
R.T.: 8.983 min
 Delta R.T.: 0.005 min
 Response: 7203
 Conc: 0.06 ng/ml

Instrument :
 ECD_P
 ClientSampleId :
 AR1242CCC500



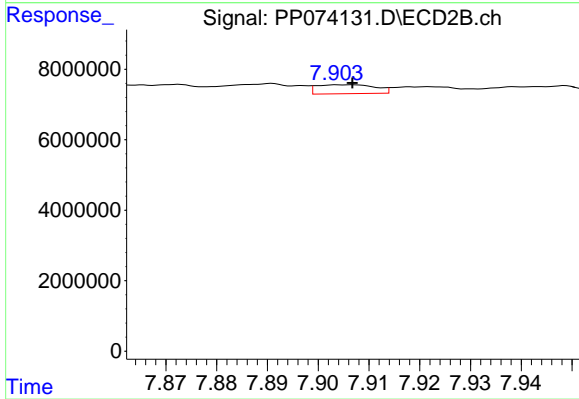
#41 AR-1268-1

R.T.: 7.848 min
 Delta R.T.: 0.004 min
 Response: 6006783
 Conc: 2.69 ng/ml



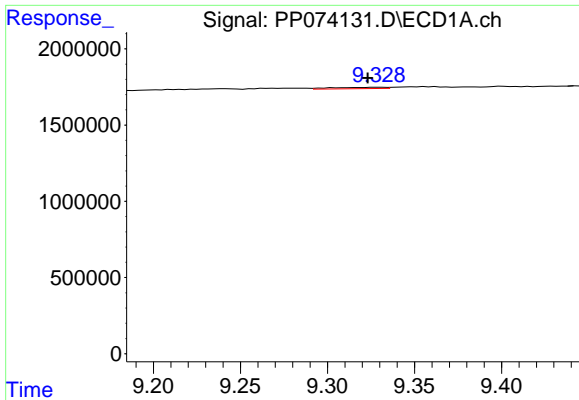
#42 AR-1268-2

R.T.: 9.071 min
 Delta R.T.: -0.005 min
 Response: 173841
 Conc: 1.49 ng/ml



#42 AR-1268-2

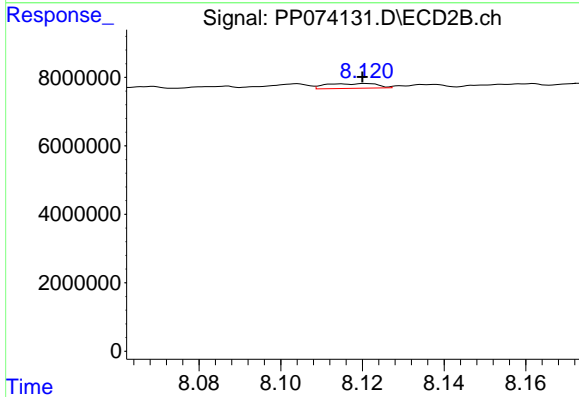
R.T.: 7.906 min
 Delta R.T.: -0.001 min
 Response: 2027260
 Conc: 0.94 ng/ml



#43 AR-1268-3

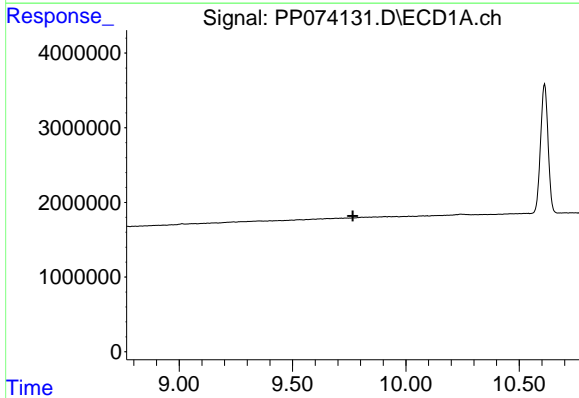
R.T.: 9.330 min
 Delta R.T.: 0.007 min
 Response: 196042
 Conc: 2.03 ng/ml

Instrument :
 ECD_P
 ClientSampleId :
 AR1242CCC500



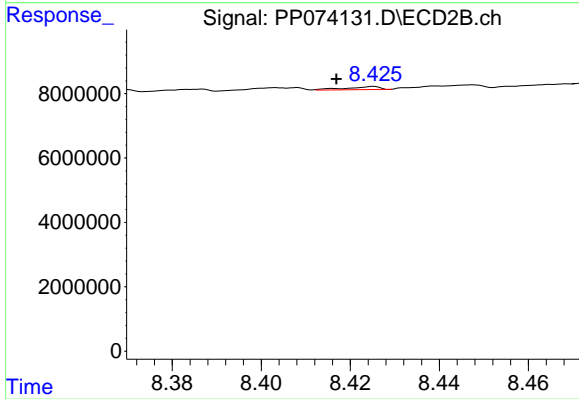
#43 AR-1268-3

R.T.: 8.121 min
 Delta R.T.: 0.000 min
 Response: 1239140
 Conc: 0.77 ng/ml



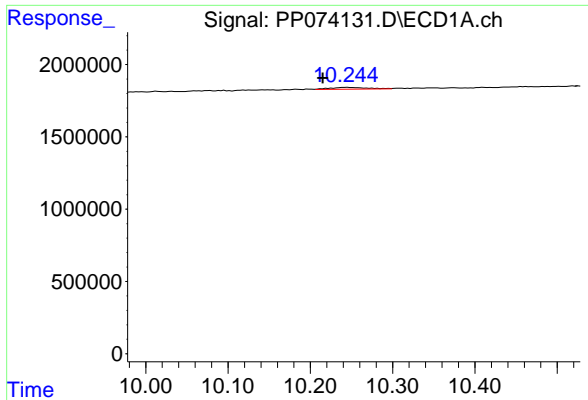
#44 AR-1268-4

R.T.: 0.000 min
 Exp R.T. : 9.766 min
 Response: 0
 Conc: N.D.



#44 AR-1268-4

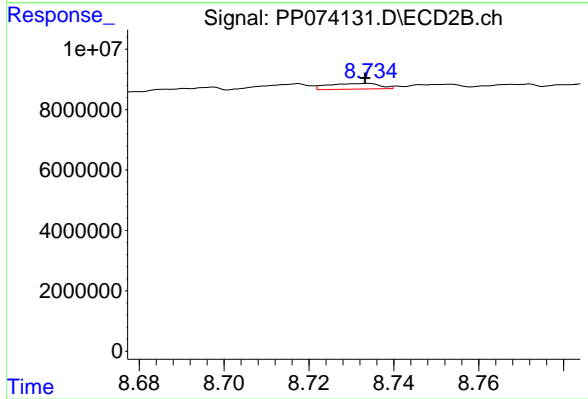
R.T.: 8.425 min
 Delta R.T.: 0.008 min
 Response: 498781
 Conc: 0.75 ng/ml



#45 AR-1268-5

R.T.: 10.245 min
Delta R.T.: 0.030 min
Response: 393740
Conc: 1.37 ng/ml

Instrument :
ECD_P
ClientSampleId :
AR1242CCC500



#45 AR-1268-5

R.T.: 8.733 min
Delta R.T.: 0.000 min
Response: 1586301
Conc: 0.31 ng/ml