

Data Path : Z:\pestpcbsrv\HPCHEM1\ECD_P\Data\PP073018\
 Data File : PP026907.D
 Signal(s) : Signal #1: ECD1A.CH Signal #2: ECD2B.CH
 Acq On : 30 Jul 2018 13:28
 Operator : EI\MA
 Sample : HSTDICC750
 Misc :
 ALS Vial : 6 Sample Multiplier: 1

Instrument :
 ECD_P
 ClientSampleId :
 HSTDICC750

Integration File signal 1: autoint1.e
 Integration File signal 2: autoint2.e
 Quant Time: Jul 31 01:25:52 2018
 Quant Method : Z:\pestpcbsrv\HPCHEM1\ECD_P\methods\PP073018.M
 Quant Title : 8080.M
 QLast Update : Tue Jul 31 01:25:00 2018
 Response via : Initial Calibration
 Integrator: ChemStation 6890 Scale Mode: Large solvent peaks clipped

Volume Inj. : 2 µl
 Signal #1 Phase : ZB-CLPesticides-1 Signal #2 Phase: ZB-CLPesticides-2
 Signal #1 Info : 30M x 0.32mm x0.5 Signal #2 Info : 30M x 0.32mm x 0.25µm

Compound	RT#1	RT#2	Resp#1	Resp#2	ng/ml	ng/ml

System Monitoring Compounds						
4) S 2,4-DCAA	12.045	12.156	182.5E6	307.1E6	750.000	750.000
Target Compounds						
1) T Dalapon	3.313	2.983	402.7E6	385.8E6	682.500	682.500
2) T 3,5-DICHL...	10.459	10.249	326.6E6	379.4E6	697.500	697.500
3) T 4-Nitroph...	11.618	11.297	320.5E6	170.2E6	682.500	682.500
5) T DICAMBA	12.366	12.468	1010.4E6	1165.6E6	705.000	705.000
6) T MCPP	12.711	12.662	30585019	66201558	70.500	70.500
7) T MCPA	12.954	13.051	51730182	96562777	69.750	69.750
8) T DICHLORPROP	13.563	13.582	227.5E6	275.8E6	705.000	705.000
9) T 2,4-D	13.911	14.066	280.3E6	378.1E6	705.000	705.000
10) T Pentachlo...	14.331	14.679	5537.0E6	4804.0E6	712.500	712.500
11) T 2,4,5-TP ...	15.193	15.250	2076.1E6	1875.7E6	712.500	712.500
12) T 2,4,5-T	15.580	15.887	1847.7E6	1577.6E6	712.500	712.500
13) T 2,4-DB	16.342	16.490	164.2E6	208.5E6	712.500	712.500
14) T DINOSEB	17.833	16.886	1460.6E6	1301.0E6	705.000	705.000
15) T Picloram	17.589	18.258	3036.9E6	2525.6E6	712.500	712.500
16) T DCPA	18.198	18.145	2928.8E6	2344.7E6	720.000	720.000

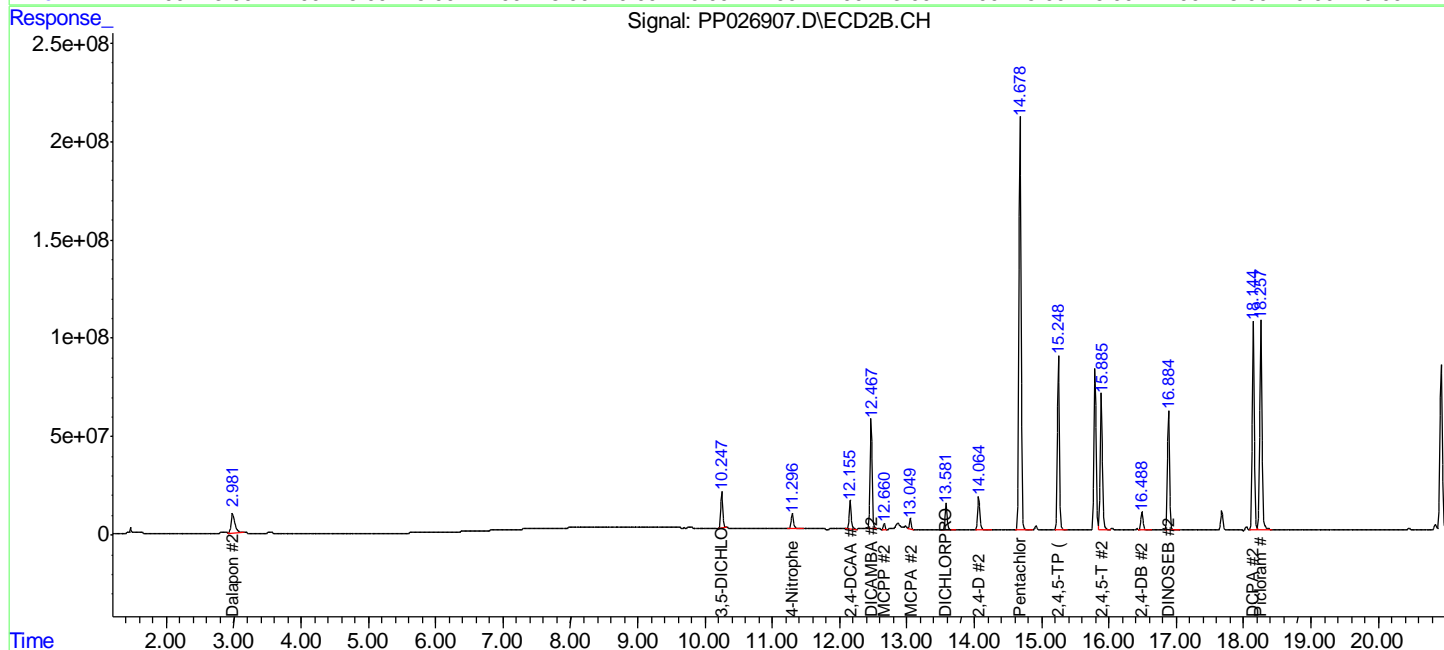
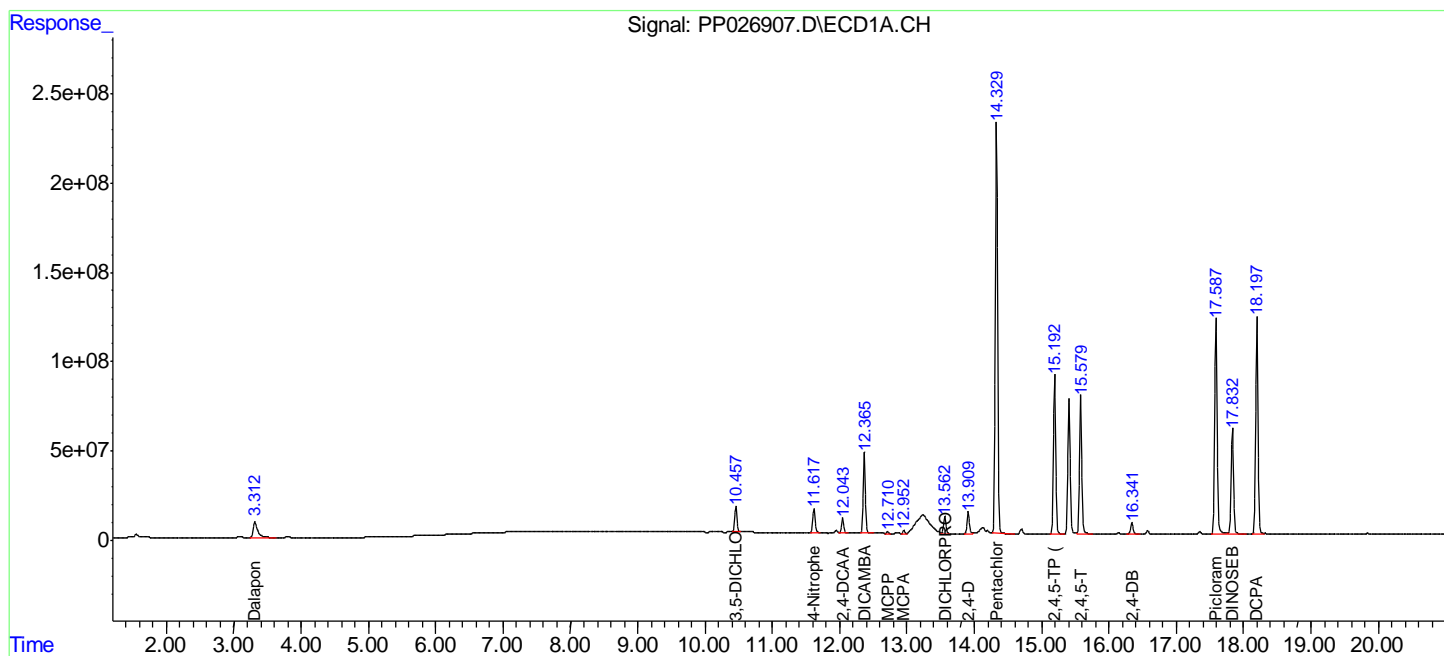
(f)=RT Delta > 1/2 Window (#)=Amounts differ by > 25% (m)=manual int.

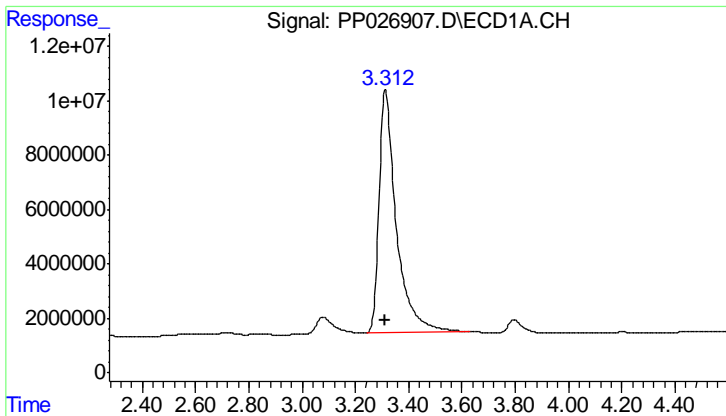
Data Path : Z:\pestpcbsrv\HPCHEM1\ECD_P\Data\PP073018\
 Data File : PP026907.D
 Signal(s) : Signal #1: ECD1A.CH Signal #2: ECD2B.CH
 Acq On : 30 Jul 2018 13:28
 Operator : EI\MA
 Sample : HSTDICC750
 Misc :
 ALS Vial : 6 Sample Multiplier: 1

Instrument :
 ECD_P
 ClientSampled :
 HSTDICC750

Integration File signal 1: autoint1.e
 Integration File signal 2: autoint2.e
 Quant Time: Jul 31 01:25:52 2018
 Quant Method : Z:\pestpcbsrv\HPCHEM1\ECD_P\methods\PP073018.M
 Quant Title : 8080.M
 QLast Update : Tue Jul 31 01:25:00 2018
 Response via : Initial Calibration
 Integrator: ChemStation 6890 Scale Mode: Large solvent peaks clipped

Volume Inj. : 2 µl
 Signal #1 Phase : ZB-CLPesticides-1 Signal #2 Phase: ZB-CLPesticides-2
 Signal #1 Info : 30M x 0.32mm x0.5 Signal #2 Info : 30M x 0.32mm x 0.25µm

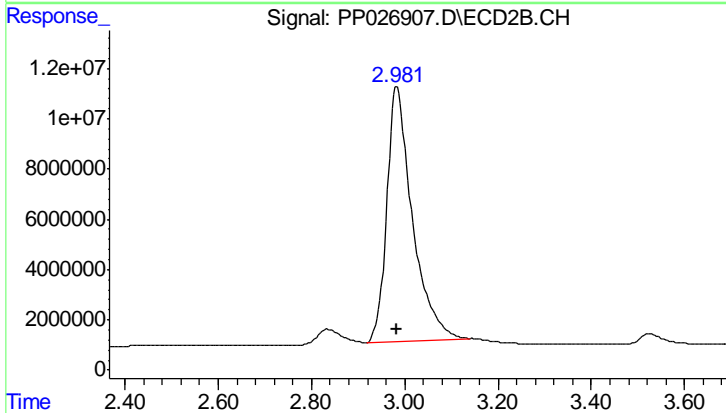




#1 Dalapon

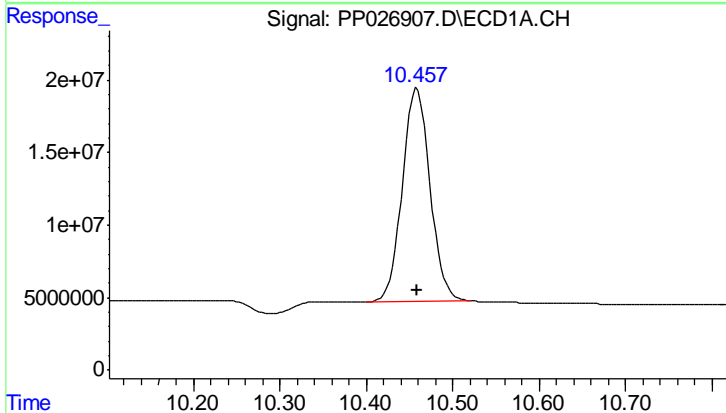
R.T.: 3.313 min
 Delta R.T.: 0.000 min
 Response: 402652211
 Conc: 682.50 ng/ml

Instrument :
 ECD_P
 ClientSampled :
 HSTDICC750



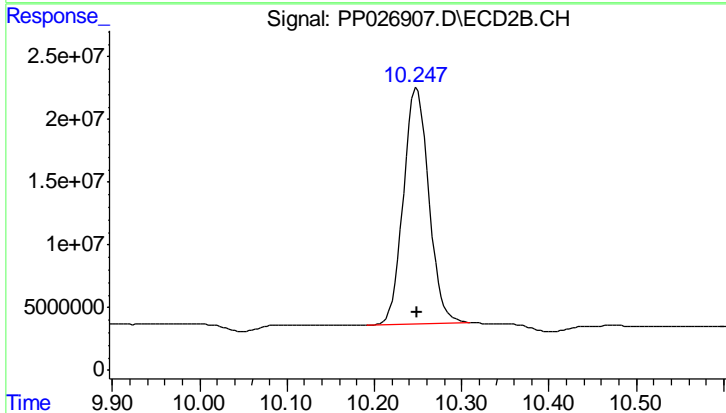
#1 Dalapon

R.T.: 2.983 min
 Delta R.T.: 0.000 min
 Response: 385833111
 Conc: 682.50 ng/ml



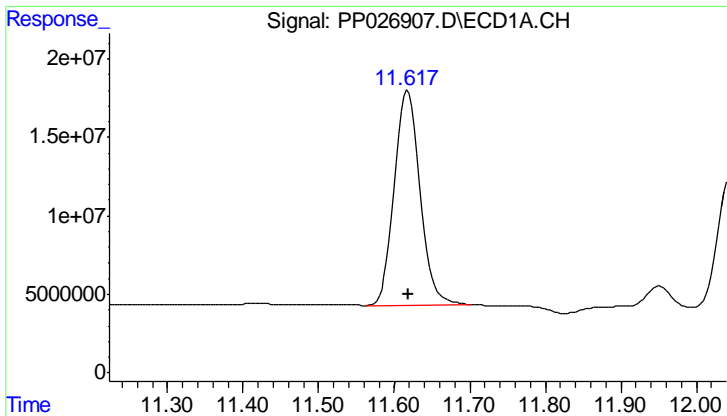
#2 3,5-DICHLOROBENZOIC ACID

R.T.: 10.459 min
 Delta R.T.: 0.000 min
 Response: 326576215
 Conc: 697.50 ng/ml



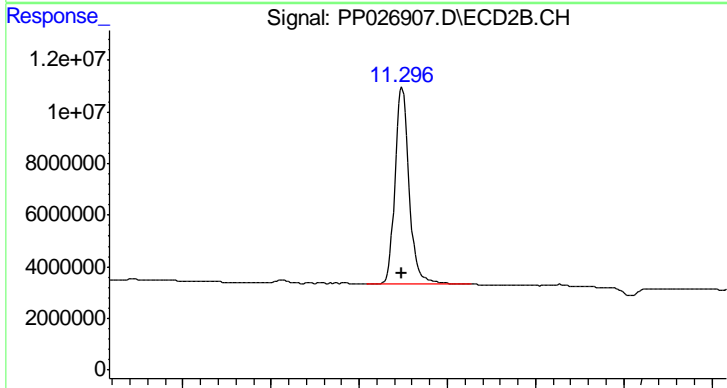
#2 3,5-DICHLOROBENZOIC ACID

R.T.: 10.249 min
 Delta R.T.: 0.000 min
 Response: 379362557
 Conc: 697.50 ng/ml

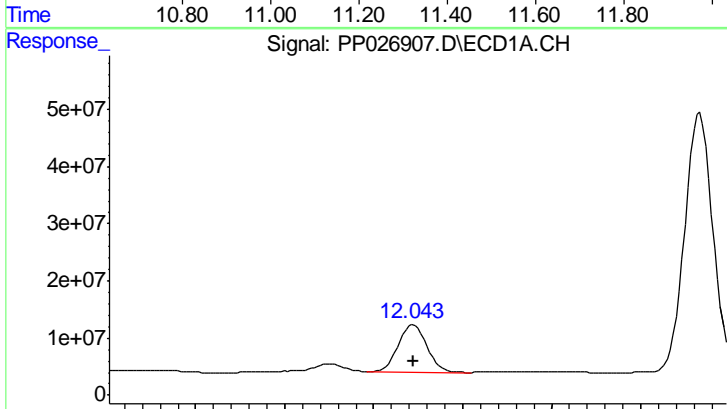


#3 4-Nitrophenol
 R.T.: 11.618 min
 Delta R.T.: 0.000 min
 Response: 320522595
 Conc: 682.50 ng/ml

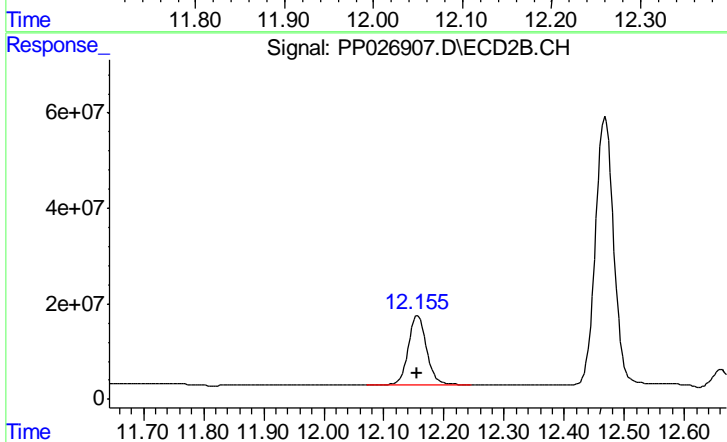
Instrument :
 ECD_P
 ClientSampleId :
 HSTDICC750



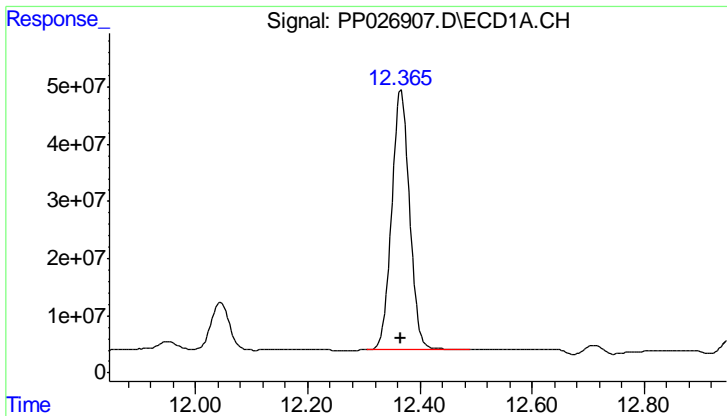
#3 4-Nitrophenol
 R.T.: 11.297 min
 Delta R.T.: 0.000 min
 Response: 170211394
 Conc: 682.50 ng/ml



#4 2,4-DCAA
 R.T.: 12.045 min
 Delta R.T.: 0.000 min
 Response: 182513199
 Conc: 750.00 ng/ml



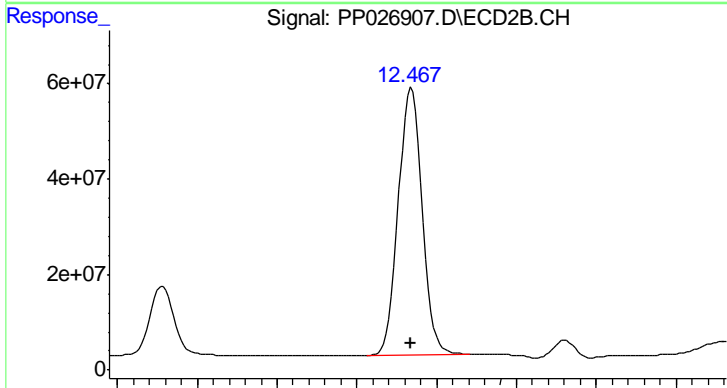
#4 2,4-DCAA
 R.T.: 12.156 min
 Delta R.T.: 0.000 min
 Response: 307135404
 Conc: 750.00 ng/ml



#5 DICAMBA

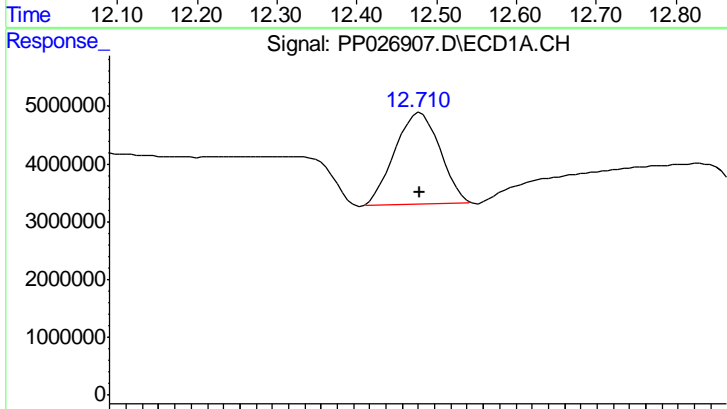
R.T.: 12.366 min
 Delta R.T.: 0.000 min
 Response: 1010430144
 Conc: 705.00 ng/ml

Instrument :
 ECD_P
 ClientSampleId :
 HSTDICC750



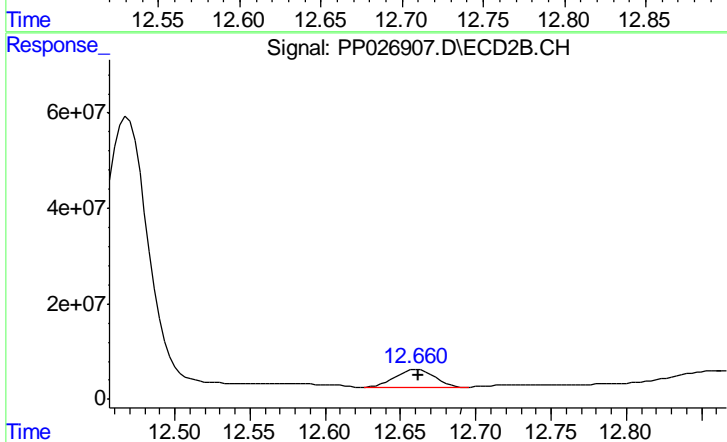
#5 DICAMBA

R.T.: 12.468 min
 Delta R.T.: 0.000 min
 Response: 1165555899
 Conc: 705.00 ng/ml



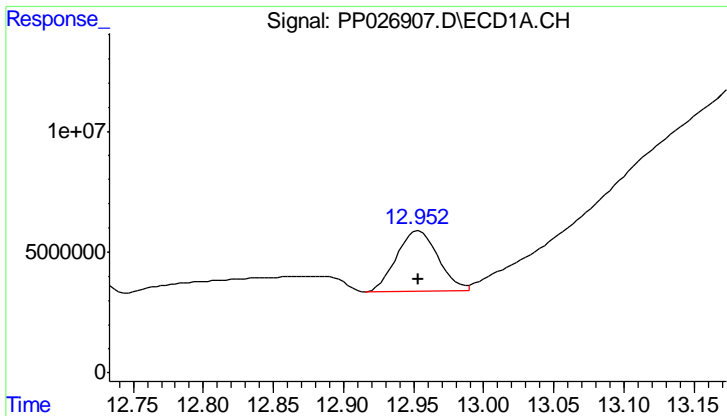
#6 MCPP

R.T.: 12.711 min
 Delta R.T.: 0.000 min
 Response: 30585019
 Conc: 70.50 ug/ml



#6 MCPP

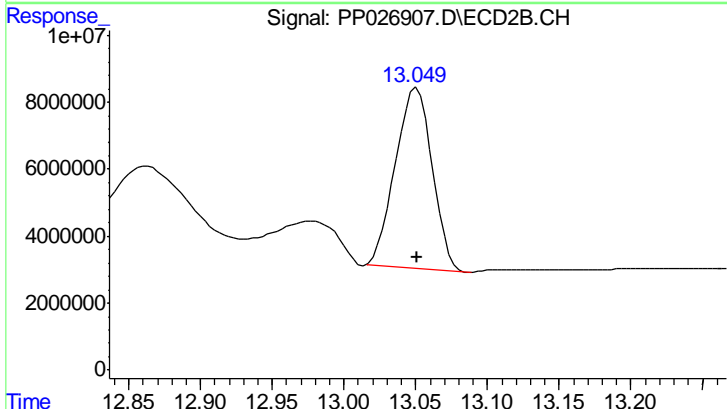
R.T.: 12.662 min
 Delta R.T.: 0.000 min
 Response: 66201558
 Conc: 70.50 ug/ml



#7 MCPA

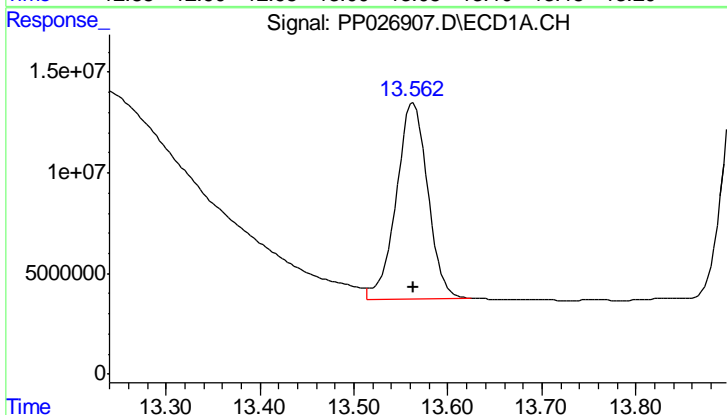
R.T.: 12.954 min
 Delta R.T.: 0.000 min
 Response: 51730182
 Conc: 69.75 ug/ml

Instrument :
 ECD_P
 ClientSampled :
 HSTDICC750



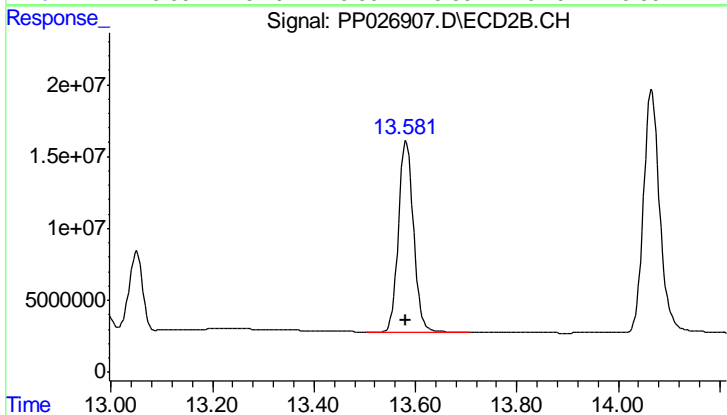
#7 MCPA

R.T.: 13.051 min
 Delta R.T.: 0.000 min
 Response: 96562777
 Conc: 69.75 ug/ml



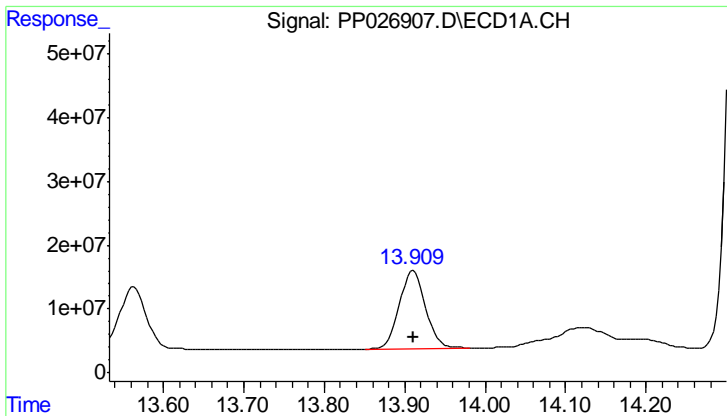
#8 DICHLORPROP

R.T.: 13.563 min
 Delta R.T.: 0.000 min
 Response: 227517139
 Conc: 705.00 ng/ml



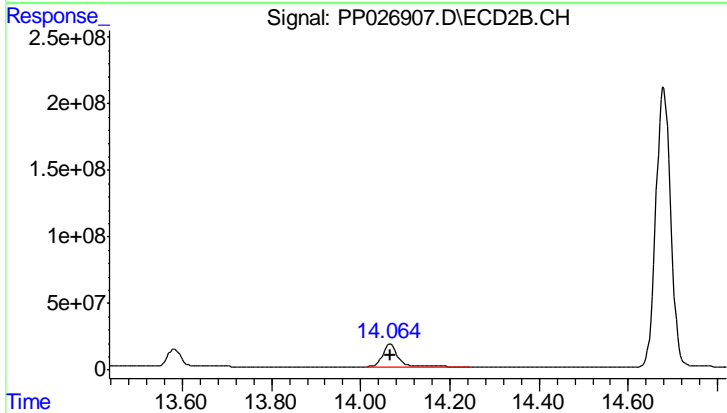
#8 DICHLORPROP

R.T.: 13.582 min
 Delta R.T.: 0.000 min
 Response: 275766201
 Conc: 705.00 ng/ml

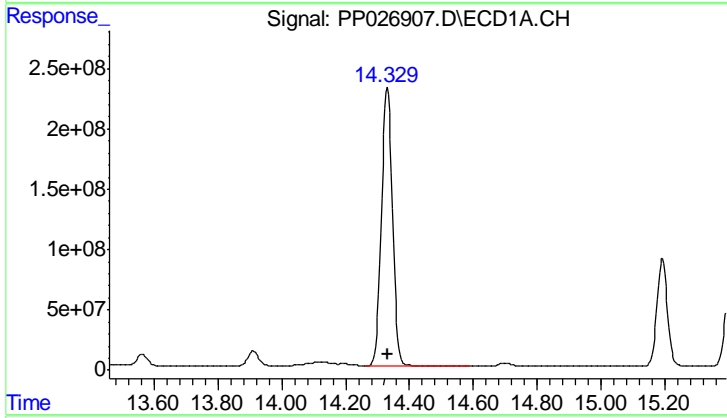


#9 2,4-D
 R.T.: 13.911 min
 Delta R.T.: 0.000 min
 Response: 280281977
 Conc: 705.00 ng/ml

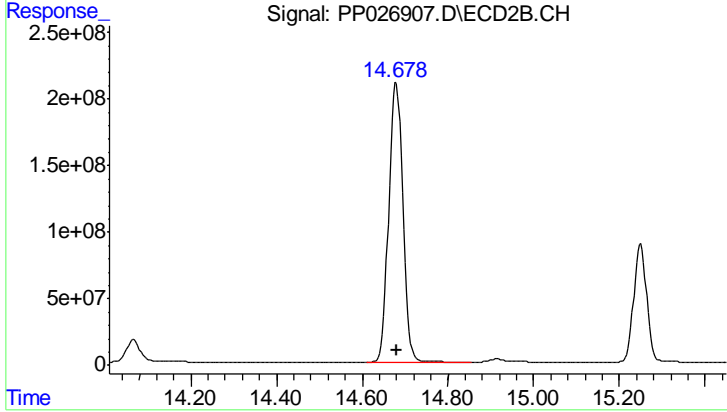
Instrument :
 ECD_P
 ClientSampleId :
 HSTDICC750



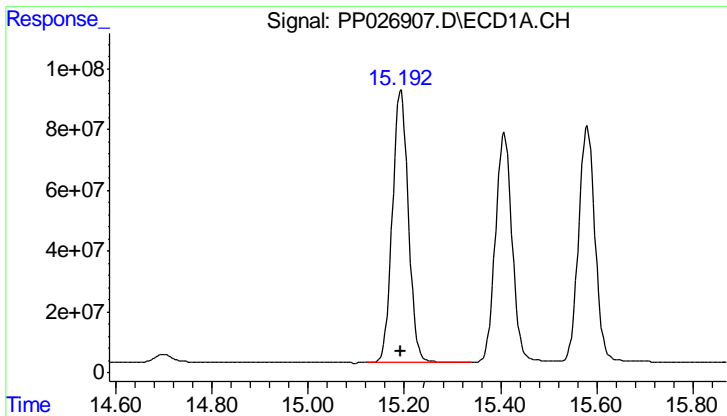
#9 2,4-D
 R.T.: 14.066 min
 Delta R.T.: 0.000 min
 Response: 378142882
 Conc: 705.00 ng/ml



#10 Pentachlorophenol
 R.T.: 14.331 min
 Delta R.T.: 0.000 min
 Response: 5536981487
 Conc: 712.50 ng/ml

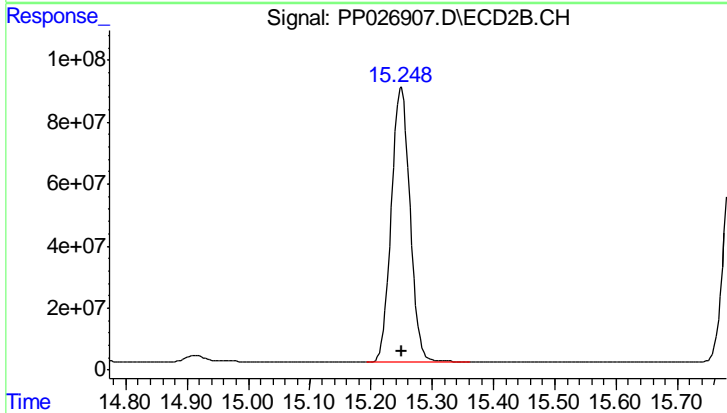


#10 Pentachlorophenol
 R.T.: 14.679 min
 Delta R.T.: 0.000 min
 Response: 4803989038
 Conc: 712.50 ng/ml

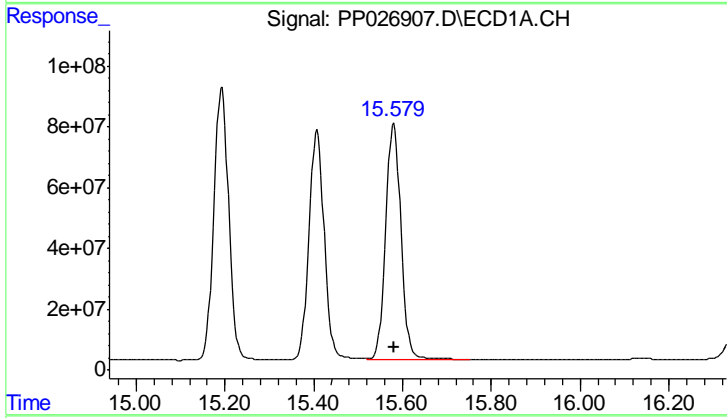


#11 2,4,5-TP (SILVEX)
 R.T.: 15.193 min
 Delta R.T.: 0.000 min
 Response: 2076099728
 Conc: 712.50 ng/ml

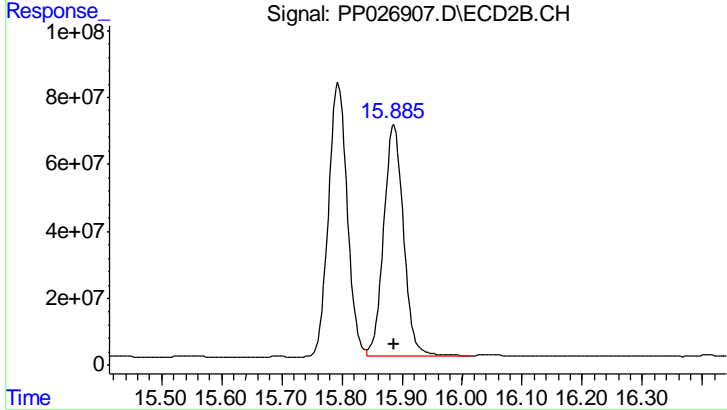
Instrument :
 ECD_P
 ClientSampleId :
 HSTDICC750



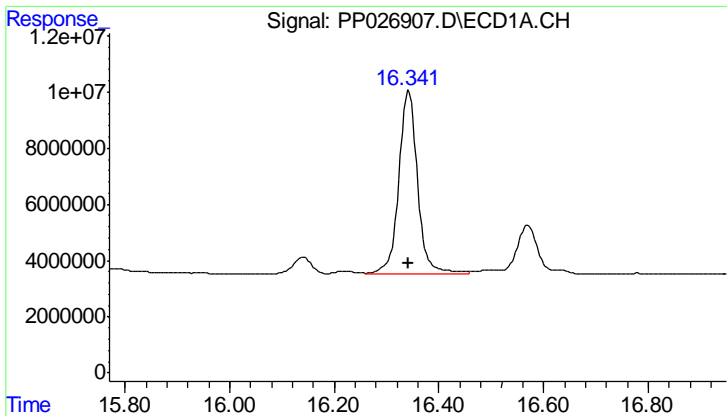
#11 2,4,5-TP (SILVEX)
 R.T.: 15.250 min
 Delta R.T.: 0.000 min
 Response: 1875676380
 Conc: 712.50 ng/ml



#12 2,4,5-T
 R.T.: 15.580 min
 Delta R.T.: 0.000 min
 Response: 1847662359
 Conc: 712.50 ng/ml



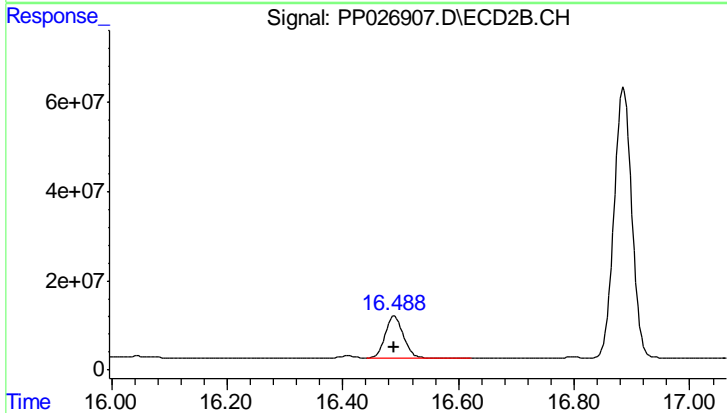
#12 2,4,5-T
 R.T.: 15.887 min
 Delta R.T.: 0.000 min
 Response: 1577618538
 Conc: 712.50 ng/ml



#13 2,4-DB

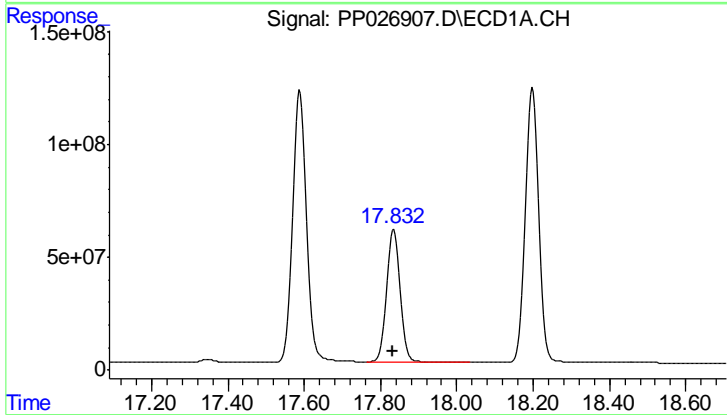
R.T.: 16.342 min
 Delta R.T.: 0.000 min
 Response: 164156961
 Conc: 712.50 ng/ml

Instrument :
 ECD_P
 ClientSampleId :
 HSTDICC750



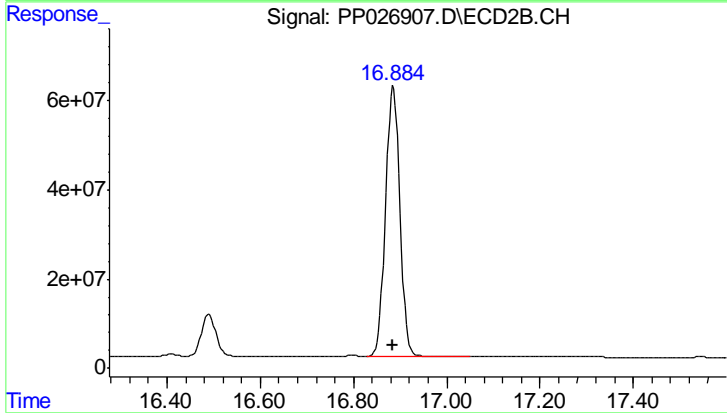
#13 2,4-DB

R.T.: 16.490 min
 Delta R.T.: 0.000 min
 Response: 208503623
 Conc: 712.50 ng/ml



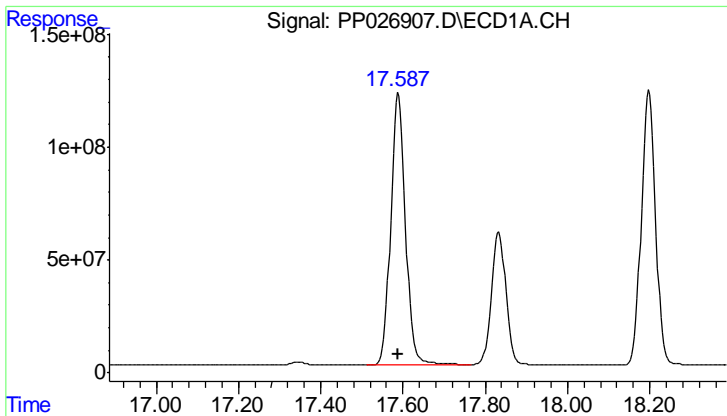
#14 DINOSEB

R.T.: 17.833 min
 Delta R.T.: 0.000 min
 Response: 1460632466
 Conc: 705.00 ng/ml



#14 DINOSEB

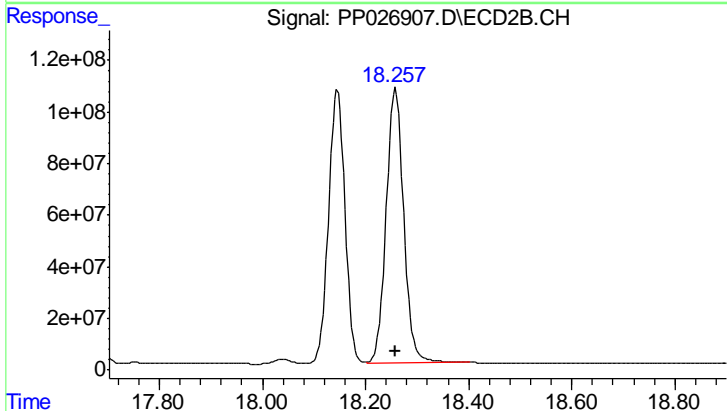
R.T.: 16.886 min
 Delta R.T.: 0.000 min
 Response: 1300993021
 Conc: 705.00 ng/ml



#15 Picloram

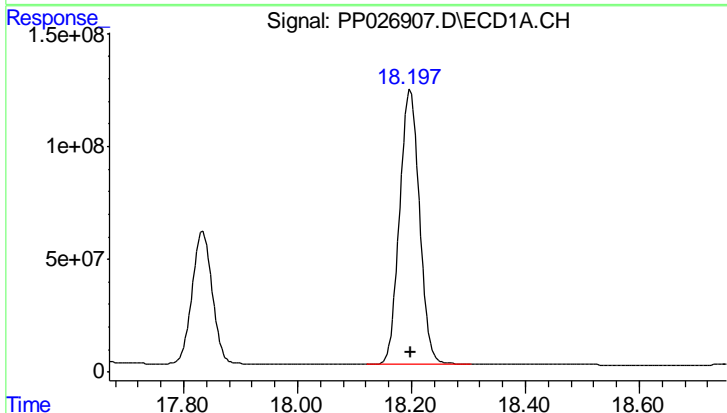
R.T.: 17.589 min
 Delta R.T.: 0.000 min
 Response: 3036863495
 Conc: 712.50 ng/ml

Instrument :
 ECD_P
 ClientSampleId :
 HSTDICC750



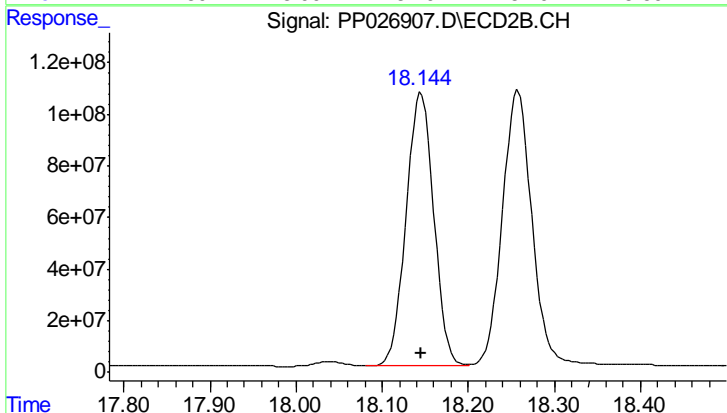
#15 Picloram

R.T.: 18.258 min
 Delta R.T.: 0.000 min
 Response: 2525566285
 Conc: 712.50 ng/ml



#16 DCPA

R.T.: 18.198 min
 Delta R.T.: 0.000 min
 Response: 2928821809
 Conc: 720.00 ng/ml



#16 DCPA

R.T.: 18.145 min
 Delta R.T.: 0.000 min
 Response: 2344709558
 Conc: 720.00 ng/ml