

Data Path : Z:\pestpcbsrv\HPCHEM1\ECD\_P\Data\PP073024\  
 Data File : PP066530.D  
 Signal(s) : Signal #1: ECD1A.ch Signal #2: ECD2B.ch  
 Acq On : 30 Jul 2024 13:45  
 Operator : YP\AJ  
 Sample : PB162357BS  
 Misc :  
 ALS Vial : 8 Sample Multiplier: 1

Instrument :  
 ECD\_P  
 ClientSampleId :  
 PB162357BS

Integration File signal 1: autoint1.e  
 Integration File signal 2: autoint2.e  
 Quant Time: Jul 30 14:41:45 2024  
 Quant Method : Z:\pestpcbsrv\HPCHEM1\ECD\_P\methods\PP073024.M  
 Quant Title : GC EXTRACTABLES  
 QLast Update : Tue Jul 30 08:44:04 2024  
 Response via : Initial Calibration  
 Integrator: ChemStation

Volume Inj. : 2 µl  
 Signal #1 Phase : ZB-MR1 Signal #2 Phase: ZB-MR2  
 Signal #1 Info : 30Mx0.32mmx 0.50µ Signal #2 Info : 30M x 0.32mm x 0.25µm

Compound	RT#1	RT#2	Resp#1	Resp#2	ng/ml	ng/ml
System Monitoring Compounds						
1) SA Tetrachlo...	4.775	4.014	41388534	43222687	21.403	21.109
2) SA Decachlor...	10.774	9.191	53519347	31679871	21.164	20.268
Target Compounds						
3) L1 AR-1016-1	5.957	5.128	33327541	26343458	439.706	421.284
4) L1 AR-1016-2	5.979	5.147	49881944	37846321	436.838	425.624
5) L1 AR-1016-3	6.043	5.330	30846079	20015432	443.253	429.892
6) L1 AR-1016-4	6.143	5.368	25234547	16032125	441.616	435.697
7) L1 AR-1016-5	6.439	5.588	25422885	19895184	453.544	431.765
8) L2 AR-1221-1	4.978	4.229	2560565	2863584	104.045	111.240
9) L2 AR-1221-2	5.071	4.320	3775761	3501328	199.136	179.960
10) L2 AR-1221-3	5.149	4.398	16505191	16134082	285.898	285.544
11) L3 AR-1232-1	5.149	4.398	16505191	16134082	369.725	362.655
12) L3 AR-1232-2	5.687	5.147	24587007	37846321	952.317	862.254
13) L3 AR-1232-3	5.979	5.330	49881944	20015432	994.536	905.065
14) L3 AR-1232-4	6.143	5.412	25234547	19433787	1009.266	997.753
15) L3 AR-1232-5	6.231	5.588	23138994	19895184	1211.744	999.438
16) L4 AR-1242-1	5.957	5.128	33327541	26343458	573.956	532.429
17) L4 AR-1242-2	5.979	5.147	49881944	37846321	576.482	541.887
18) L4 AR-1242-3	6.043	5.330	30846079	20015432	574.920	526.930
19) L4 AR-1242-4	6.143	5.412	25234547	19433787	548.857	534.128
20) L4 AR-1242-5	6.885	5.946	4133310	15585701	74.144	362.697 #
21) L5 AR-1248-1	5.957	5.128	33327541	26343458	727.164	678.406
22) L5 AR-1248-2	6.231	5.368	23138994	16032125	331.756	308.297
23) L5 AR-1248-3	6.439	5.412	25422885	19433787	337.225	359.486
24) L5 AR-1248-4	6.819f	5.588	24796663	19895184	277.645	321.206
25) L5 AR-1248-5	6.885	5.987	4133310	2314118	46.640	39.799
26) L6 AR-1254-1	6.819	5.946	24796663	15585701	274.945	179.750 #
27) L6 AR-1254-2	7.036	6.093	22589554	14776223	168.173	193.975
28) L6 AR-1254-3	7.407	6.518	11651920	31455275	86.485	263.074 #
29) L6 AR-1254-4	7.693	6.734	8267973	2292080	77.595	31.952 #
30) L6 AR-1254-5	8.112	7.156	71571151	49561956	625.584	444.833 #
31) L7 AR-1260-1	7.571	6.636	49918205	35695596	428.320	411.148
32) L7 AR-1260-2	7.826	6.822	61249756	42650992	412.913	404.252
33) L7 AR-1260-3	8.190	6.982	42608048	43078814	413.069	376.090
34) L7 AR-1260-4	8.433	7.458	47651803	31549765	421.854	395.454
35) L7 AR-1260-5	8.778	7.697	92928797	73273549	408.457	398.667
36) L8 AR-1262-1	8.252	7.247	23318327	18078494	363.630	376.799
37) L8 AR-1262-2	8.778	7.458	92928797	31549765	359.223	304.933
38) L8 AR-1262-3	9.135f	7.984	59867722	14790096	329.602	175.999 #
39) L8 AR-1262-4	9.198f	8.049	38458704	52453904	255.626	345.945 #
40) L8 AR-1262-5	9.936	8.576	23088251	14927268	243.788	235.388
41) L9 AR-1268-1	9.135f	7.984	59867722	14790096	177.901	61.208 #

Data Path : Z:\pestpcbsrv\HPCHEM1\ECD\_P\Data\PP073024\  
 Data File : PP066530.D  
 Signal(s) : Signal #1: ECD1A.ch Signal #2: ECD2B.ch  
 Acq On : 30 Jul 2024 13:45  
 Operator : YP\AJ  
 Sample : PB162357BS  
 Misc :  
 ALS Vial : 8 Sample Multiplier: 1

Instrument :  
 ECD\_P  
 ClientSampleId :  
 PB162357BS

Integration File signal 1: autoint1.e  
 Integration File signal 2: autoint2.e  
 Quant Time: Jul 30 14:41:45 2024  
 Quant Method : Z:\pestpcbsrv\HPCHEM1\ECD\_P\methods\PP073024.M  
 Quant Title : GC EXTRACTABLES  
 QLast Update : Tue Jul 30 08:44:04 2024  
 Response via : Initial Calibration  
 Integrator: ChemStation

Volume Inj. : 2 µl  
 Signal #1 Phase : ZB-MR1 Signal #2 Phase: ZB-MR2  
 Signal #1 Info : 30Mx0.32mmx 0.50µ Signal #2 Info : 30M x 0.32mm x 0.25µm

	Compound	RT#1	RT#2	Resp#1	Resp#2	ng/ml	ng/ml
42)	L9 AR-1268-2	9.198f	8.049	38458704	52453904	121.644	237.214 #
43)	L9 AR-1268-3	9.473	8.266	2070059	1228888	7.158	6.388
44)	L9 AR-1268-4	9.936	8.576	23088251	14927268	217.847	212.382
45)	L9 AR-1268-5	10.397	8.902	9566395	5241045	10.889	9.653

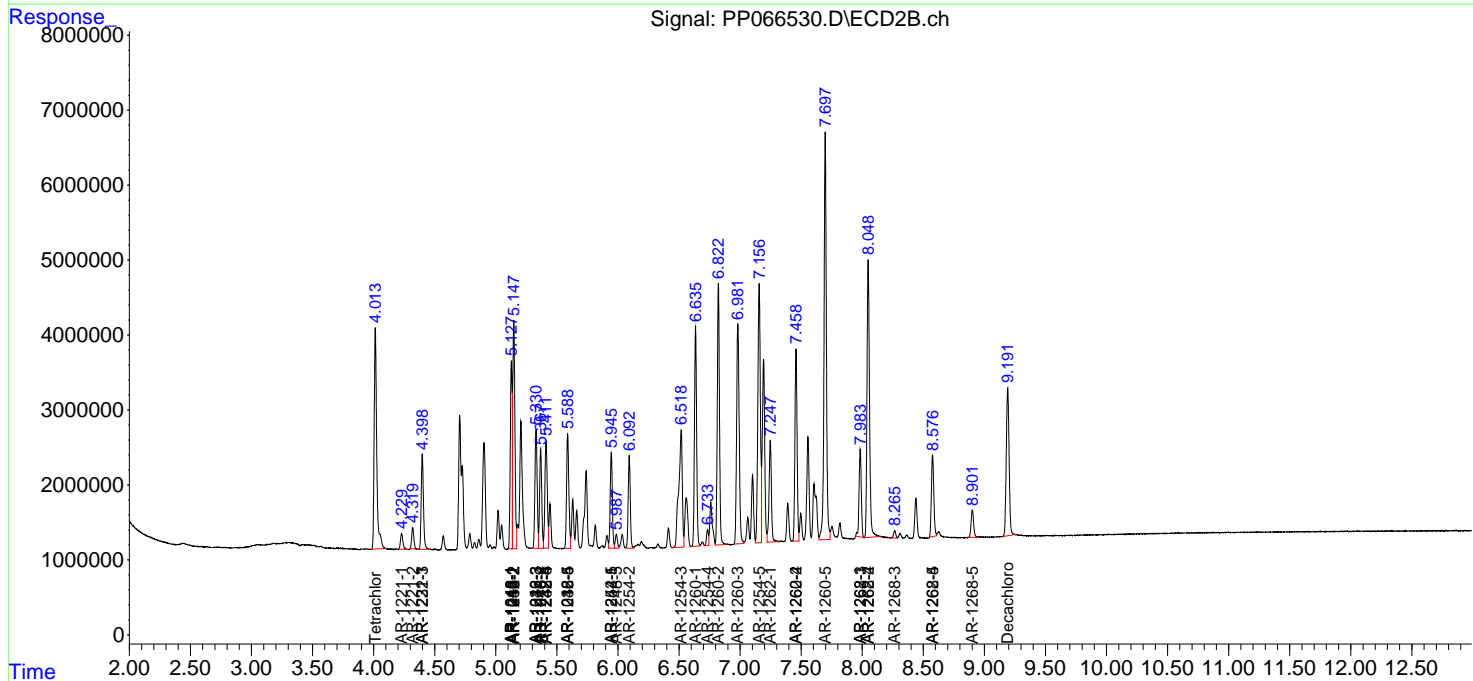
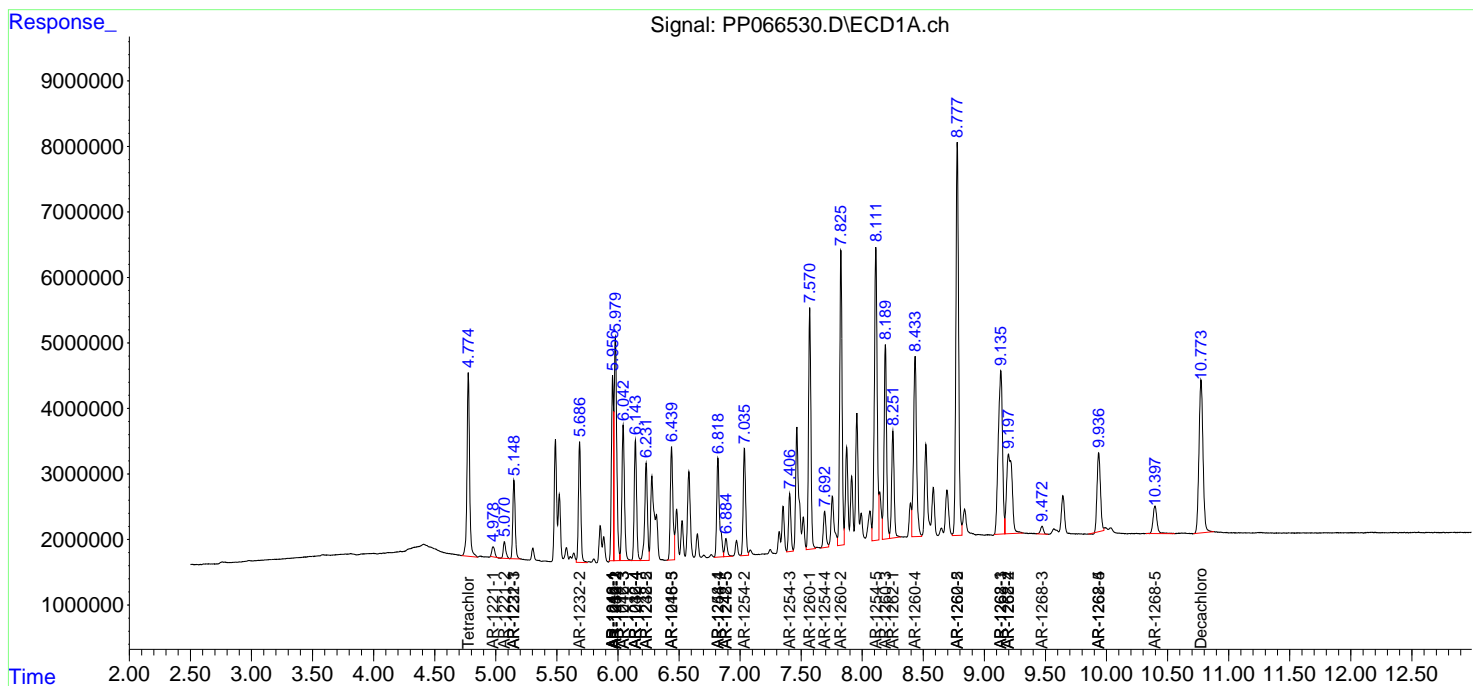
(f)=RT Delta > 1/2 Window (#)=Amounts differ by > 25% (m)=manual int.

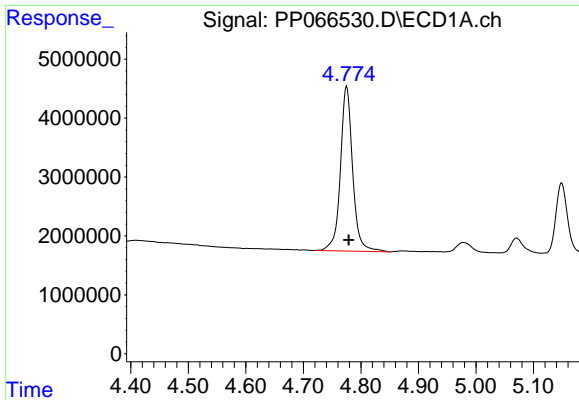
Data Path : Z:\pestpcbsrv\HPCHEM1\ECD\_P\Data\PP073024\  
 Data File : PP066530.D  
 Signal(s) : Signal #1: ECD1A.ch Signal #2: ECD2B.ch  
 Acq On : 30 Jul 2024 13:45  
 Operator : YP\AJ  
 Sample : PB162357BS  
 Misc :  
 ALS Vial : 8 Sample Multiplier: 1

Instrument :  
 ECD\_P  
 ClientSampleId :  
 PB162357BS

Integration File signal 1: autoint1.e  
 Integration File signal 2: autoint2.e  
 Quant Time: Jul 30 14:41:45 2024  
 Quant Method : Z:\pestpcbsrv\HPCHEM1\ECD\_P\methods\PP073024.M  
 Quant Title : GC EXTRACTABLES  
 QLast Update : Tue Jul 30 08:44:04 2024  
 Response via : Initial Calibration  
 Integrator: ChemStation

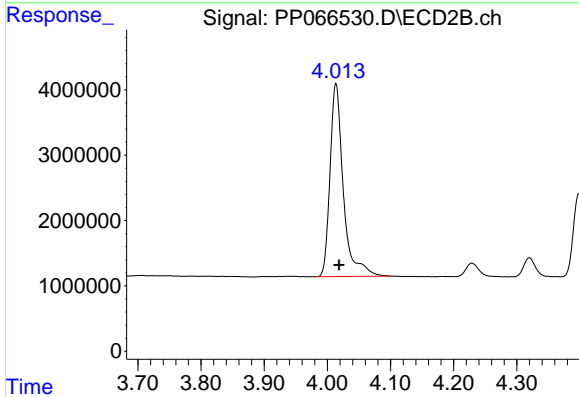
Volume Inj. : 2 µl  
 Signal #1 Phase : ZB-MR1 Signal #2 Phase: ZB-MR2  
 Signal #1 Info : 30Mx0.32mmx 0.50µ Signal #2 Info : 30M x 0.32mm x 0.25µm



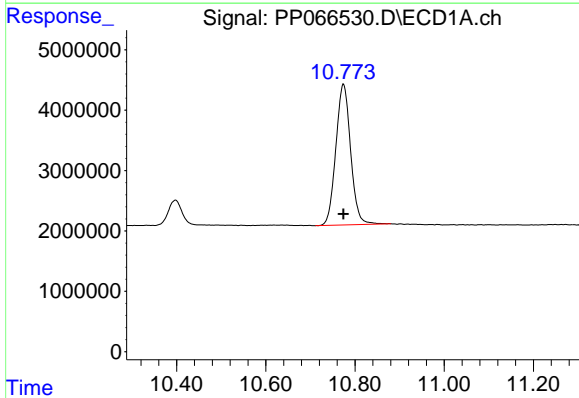


#1 Tetrachloro-m-xylene  
 R.T.: 4.775 min  
 Delta R.T.: -0.004 min  
 Response: 41388534  
 Conc: 21.40 ng/ml

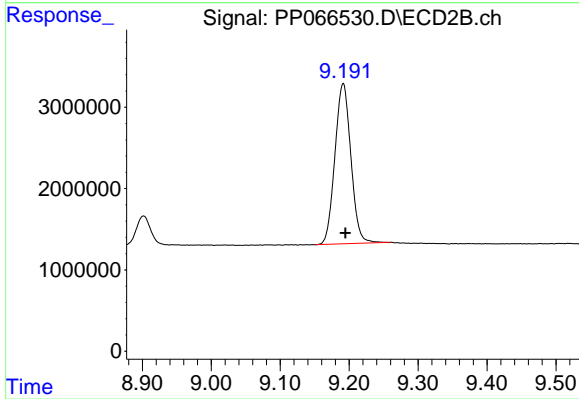
Instrument :  
 ECD\_P  
 ClientSampleId :  
 PB162357BS



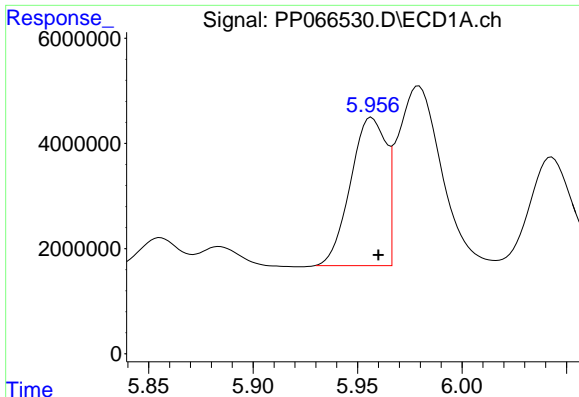
#1 Tetrachloro-m-xylene  
 R.T.: 4.014 min  
 Delta R.T.: -0.005 min  
 Response: 43222687  
 Conc: 21.11 ng/ml



#2 Decachlorobiphenyl  
 R.T.: 10.774 min  
 Delta R.T.: 0.000 min  
 Response: 53519347  
 Conc: 21.16 ng/ml



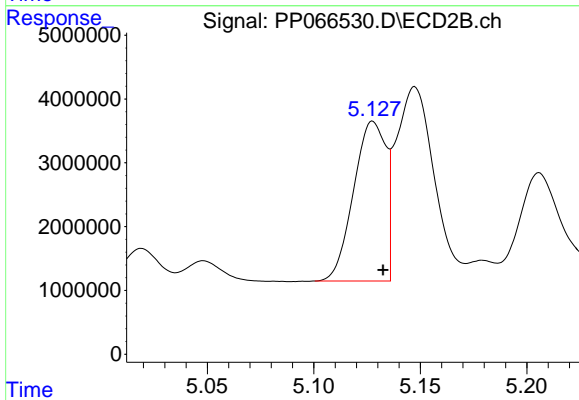
#2 Decachlorobiphenyl  
 R.T.: 9.191 min  
 Delta R.T.: -0.003 min  
 Response: 31679871  
 Conc: 20.27 ng/ml



#3 AR-1016-1

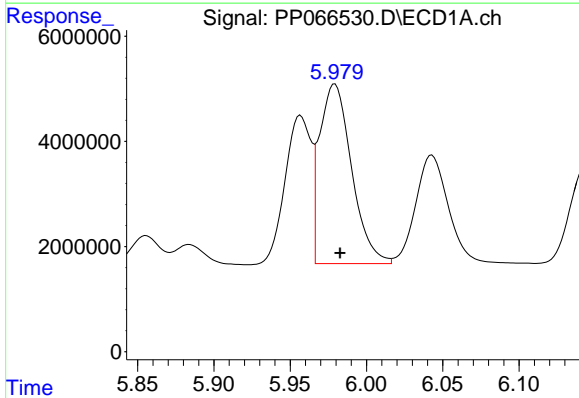
R.T.: 5.957 min  
 Delta R.T.: -0.003 min  
 Response: 33327541  
 Conc: 439.71 ng/ml

Instrument :  
 ECD\_P  
 ClientSampleId :  
 PB162357BS



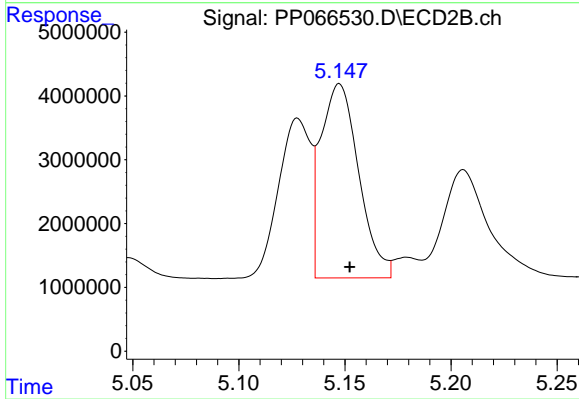
#3 AR-1016-1

R.T.: 5.128 min  
 Delta R.T.: -0.005 min  
 Response: 26343458  
 Conc: 421.28 ng/ml



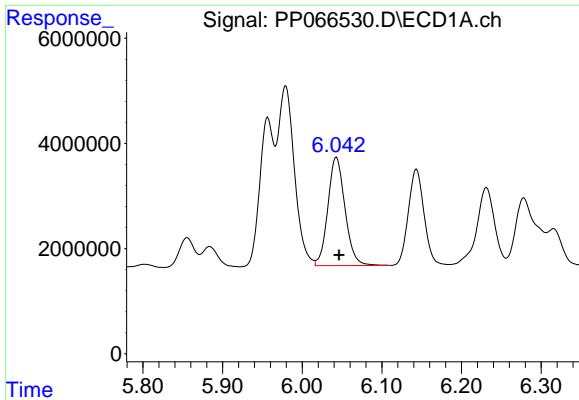
#4 AR-1016-2

R.T.: 5.979 min  
 Delta R.T.: -0.003 min  
 Response: 49881944  
 Conc: 436.84 ng/ml



#4 AR-1016-2

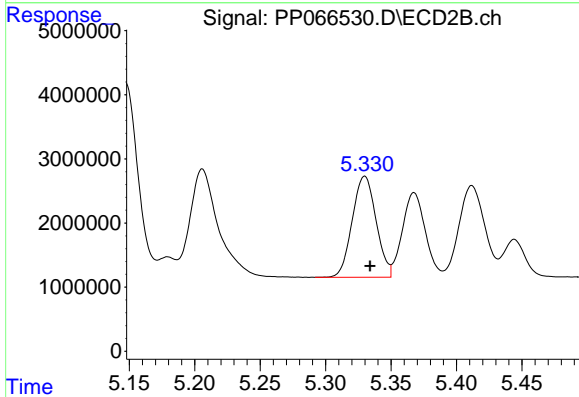
R.T.: 5.147 min  
 Delta R.T.: -0.005 min  
 Response: 37846321  
 Conc: 425.62 ng/ml



#5 AR-1016-3

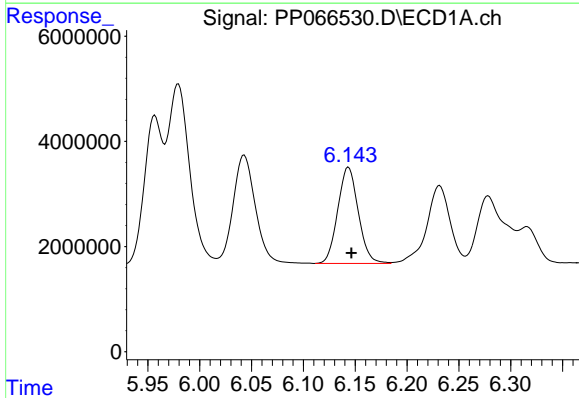
R.T.: 6.043 min  
 Delta R.T.: -0.003 min  
 Response: 30846079  
 Conc: 443.25 ng/ml

Instrument :  
 ECD\_P  
 ClientSampleId :  
 PB162357BS



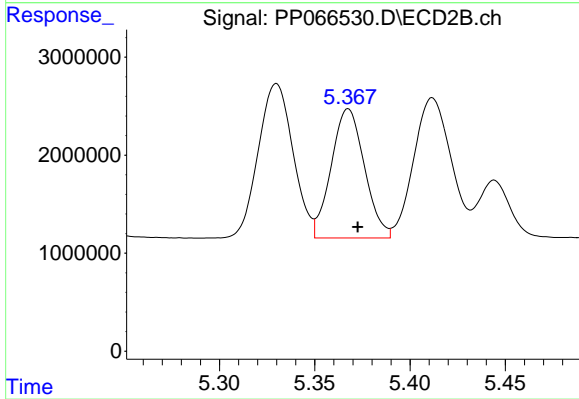
#5 AR-1016-3

R.T.: 5.330 min  
 Delta R.T.: -0.004 min  
 Response: 20015432  
 Conc: 429.89 ng/ml



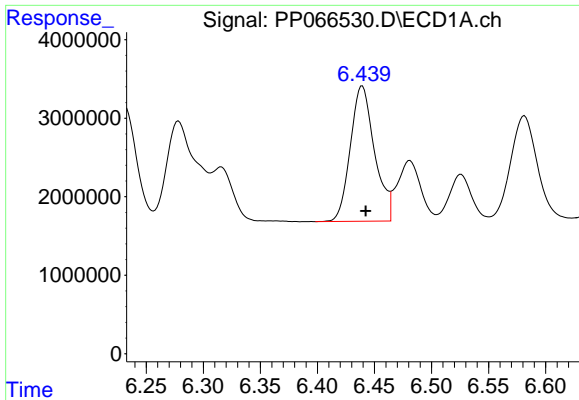
#6 AR-1016-4

R.T.: 6.143 min  
 Delta R.T.: -0.003 min  
 Response: 25234547  
 Conc: 441.62 ng/ml



#6 AR-1016-4

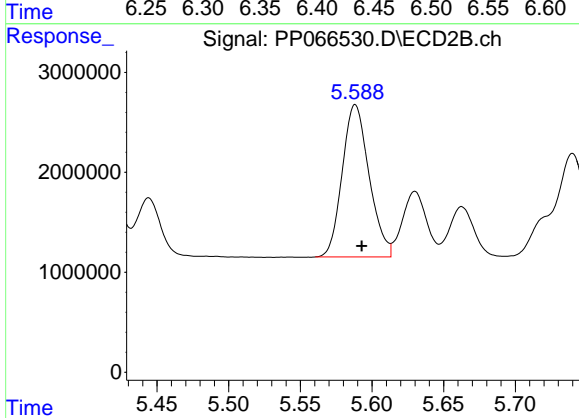
R.T.: 5.368 min  
 Delta R.T.: -0.005 min  
 Response: 16032125  
 Conc: 435.70 ng/ml



#7 AR-1016-5

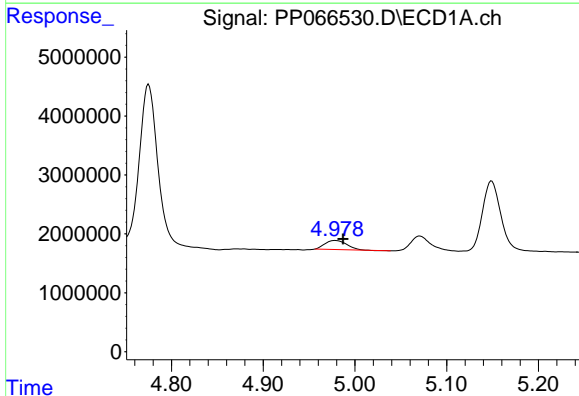
R.T.: 6.439 min  
 Delta R.T.: -0.003 min  
 Response: 25422885  
 Conc: 453.54 ng/ml

Instrument :  
 ECD\_P  
 ClientSampleId :  
 PB162357BS



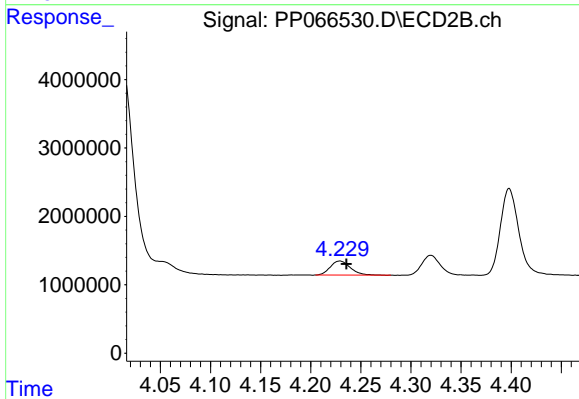
#7 AR-1016-5

R.T.: 5.588 min  
 Delta R.T.: -0.005 min  
 Response: 19895184  
 Conc: 431.77 ng/ml



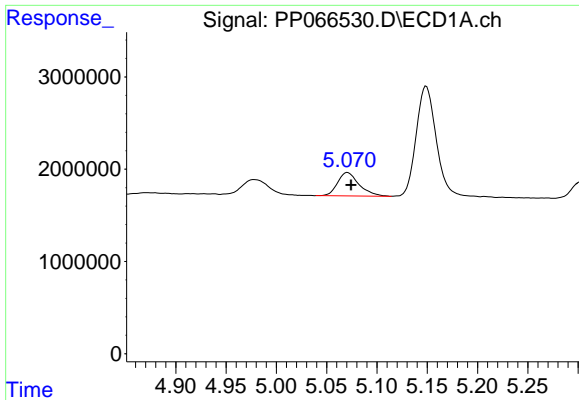
#8 AR-1221-1

R.T.: 4.978 min  
 Delta R.T.: -0.009 min  
 Response: 2560565  
 Conc: 104.04 ng/ml



#8 AR-1221-1

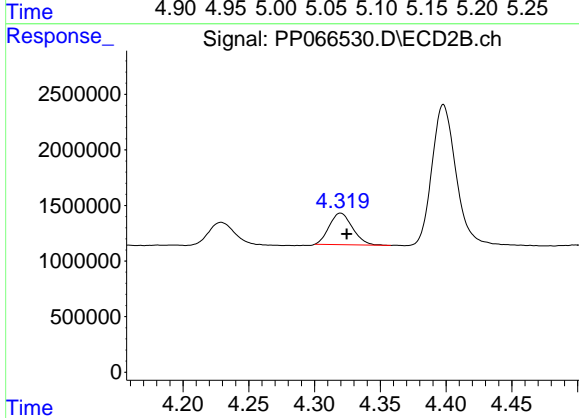
R.T.: 4.229 min  
 Delta R.T.: -0.006 min  
 Response: 2863584  
 Conc: 111.24 ng/ml



#9 AR-1221-2

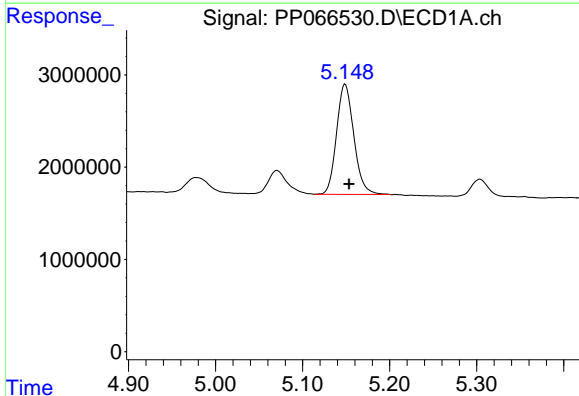
R.T.: 5.071 min  
 Delta R.T.: -0.004 min  
 Response: 3775761  
 Conc: 199.14 ng/ml

Instrument :  
 ECD\_P  
 ClientSampleId :  
 PB162357BS



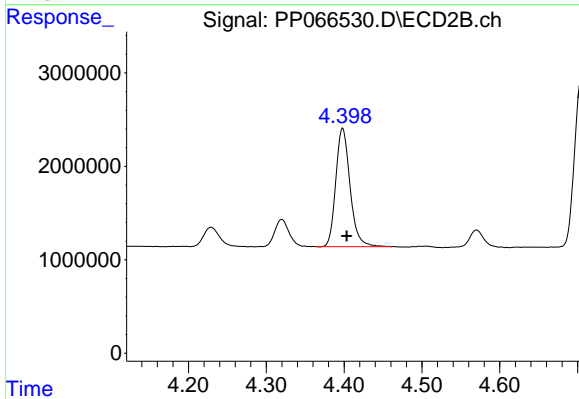
#9 AR-1221-2

R.T.: 4.320 min  
 Delta R.T.: -0.005 min  
 Response: 3501328  
 Conc: 179.96 ng/ml



#10 AR-1221-3

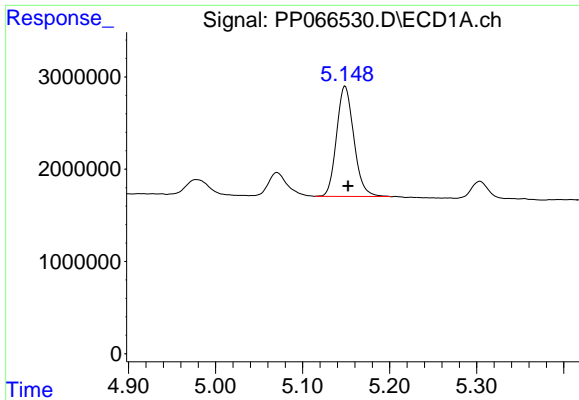
R.T.: 5.149 min  
 Delta R.T.: -0.004 min  
 Response: 16505191  
 Conc: 285.90 ng/ml



#10 AR-1221-3

R.T.: 4.398 min  
 Delta R.T.: -0.005 min  
 Response: 16134082  
 Conc: 285.54 ng/ml

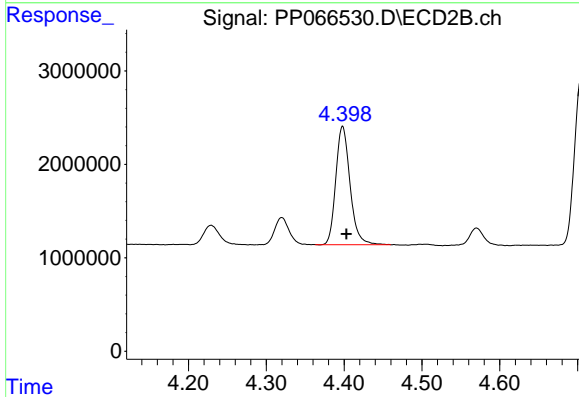




#11 AR-1232-1

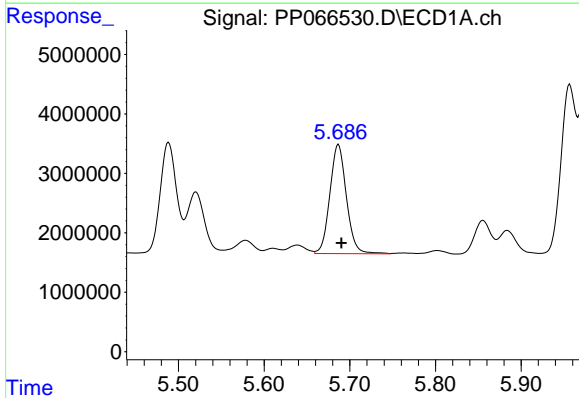
R.T.: 5.149 min  
 Delta R.T.: -0.003 min  
 Response: 16505191  
 Conc: 369.73 ng/ml

Instrument :  
 ECD\_P  
 ClientSampleId :  
 PB162357BS



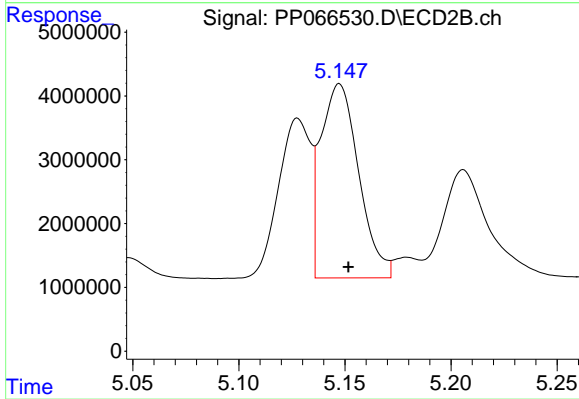
#11 AR-1232-1

R.T.: 4.398 min  
 Delta R.T.: -0.005 min  
 Response: 16134082  
 Conc: 362.65 ng/ml



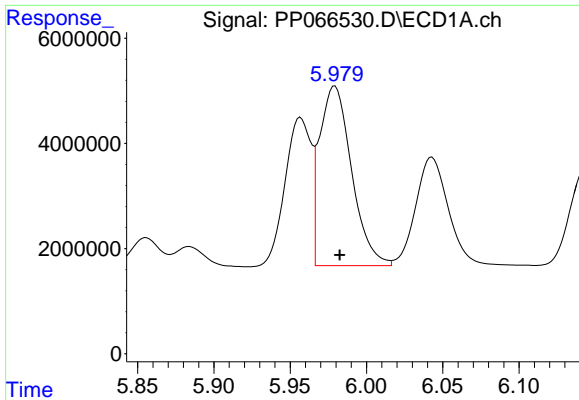
#12 AR-1232-2

R.T.: 5.687 min  
 Delta R.T.: -0.004 min  
 Response: 24587007  
 Conc: 952.32 ng/ml



#12 AR-1232-2

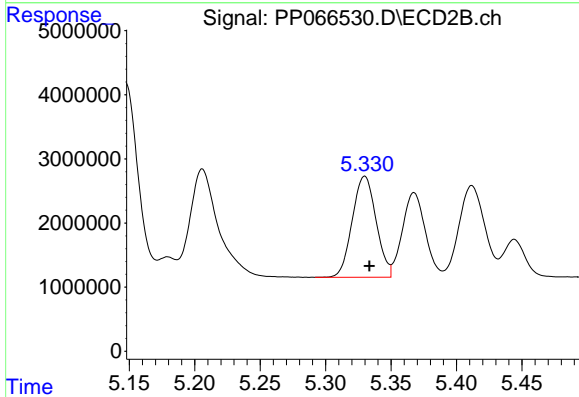
R.T.: 5.147 min  
 Delta R.T.: -0.004 min  
 Response: 37846321  
 Conc: 862.25 ng/ml



#13 AR-1232-3

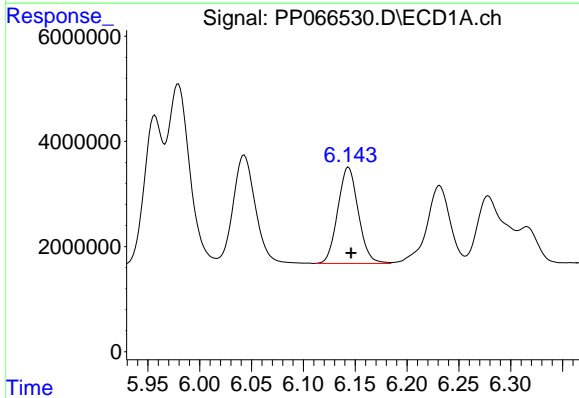
R.T.: 5.979 min  
 Delta R.T.: -0.003 min  
 Response: 49881944  
 Conc: 994.54 ng/ml

Instrument :  
 ECD\_P  
 ClientSampleId :  
 PB162357BS



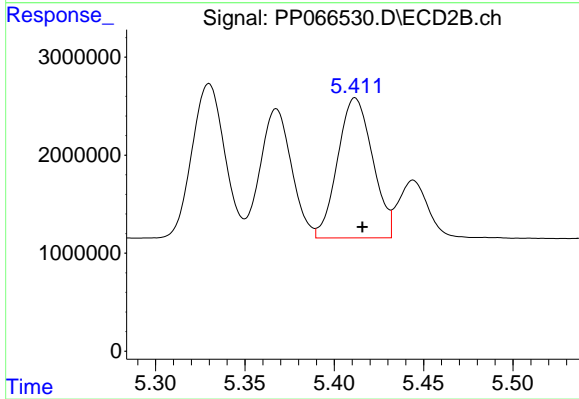
#13 AR-1232-3

R.T.: 5.330 min  
 Delta R.T.: -0.004 min  
 Response: 20015432  
 Conc: 905.07 ng/ml



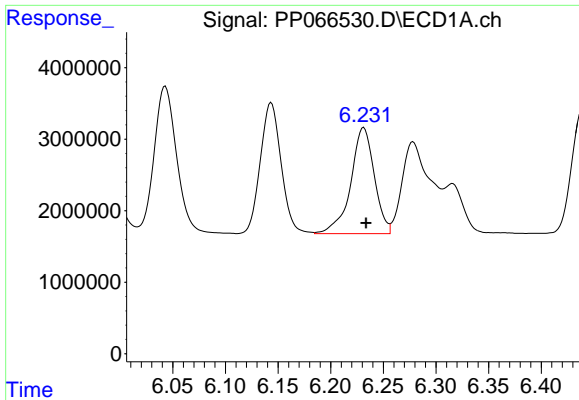
#14 AR-1232-4

R.T.: 6.143 min  
 Delta R.T.: -0.003 min  
 Response: 25234547  
 Conc: 1009.27 ng/ml



#14 AR-1232-4

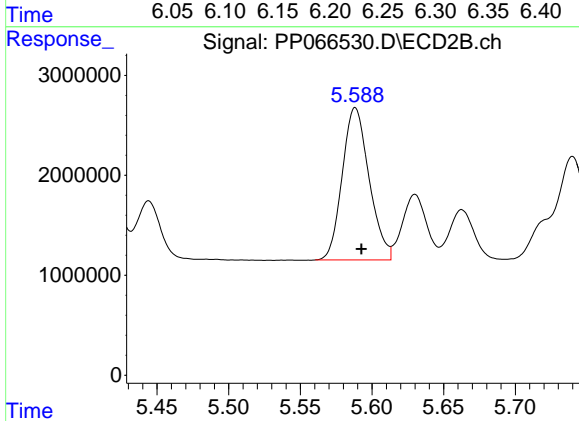
R.T.: 5.412 min  
 Delta R.T.: -0.004 min  
 Response: 19433787  
 Conc: 997.75 ng/ml



#15 AR-1232-5

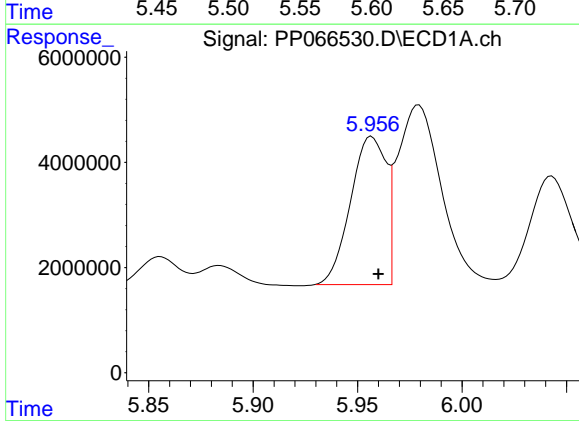
R.T.: 6.231 min  
 Delta R.T.: -0.002 min  
 Response: 23138994  
 Conc: 1211.74 ng/ml

Instrument :  
 ECD\_P  
 ClientSampleId :  
 PB162357BS



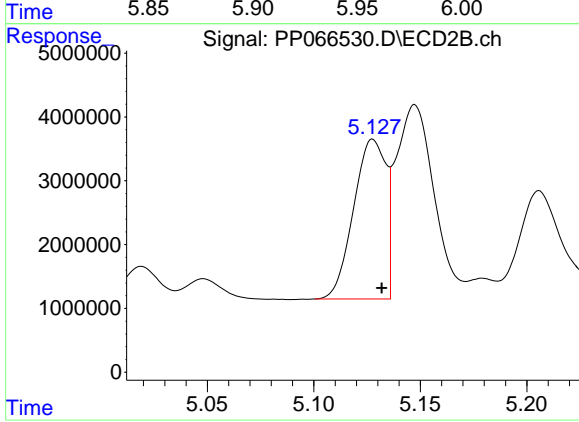
#15 AR-1232-5

R.T.: 5.588 min  
 Delta R.T.: -0.004 min  
 Response: 19895184  
 Conc: 999.44 ng/ml



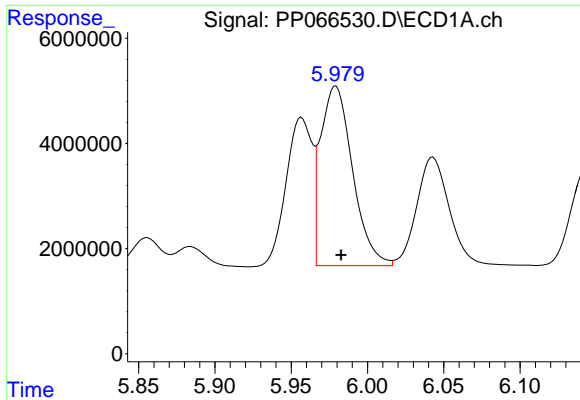
#16 AR-1242-1

R.T.: 5.957 min  
 Delta R.T.: -0.003 min  
 Response: 33327541  
 Conc: 573.96 ng/ml



#16 AR-1242-1

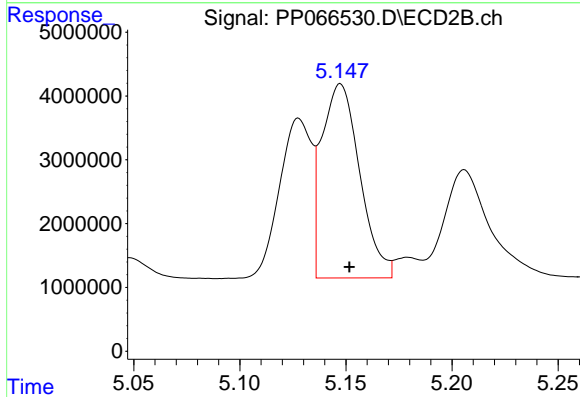
R.T.: 5.128 min  
 Delta R.T.: -0.004 min  
 Response: 26343458  
 Conc: 532.43 ng/ml



#17 AR-1242-2

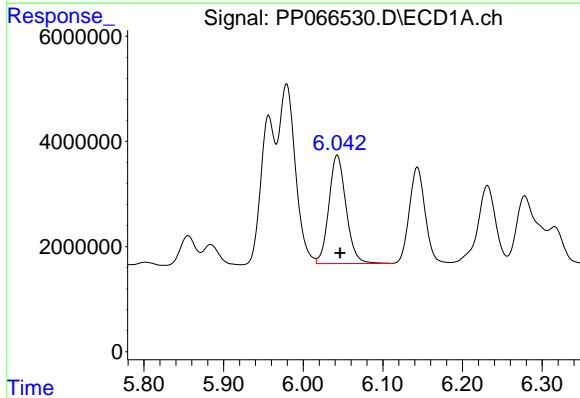
R.T.: 5.979 min  
 Delta R.T.: -0.004 min  
 Response: 49881944  
 Conc: 576.48 ng/ml

Instrument :  
 ECD\_P  
 ClientSampleId :  
 PB162357BS



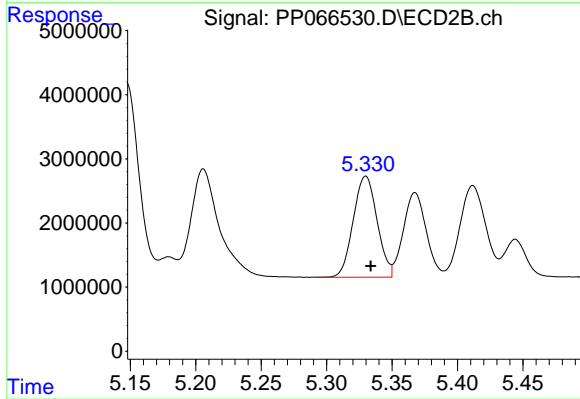
#17 AR-1242-2

R.T.: 5.147 min  
 Delta R.T.: -0.004 min  
 Response: 37846321  
 Conc: 541.89 ng/ml



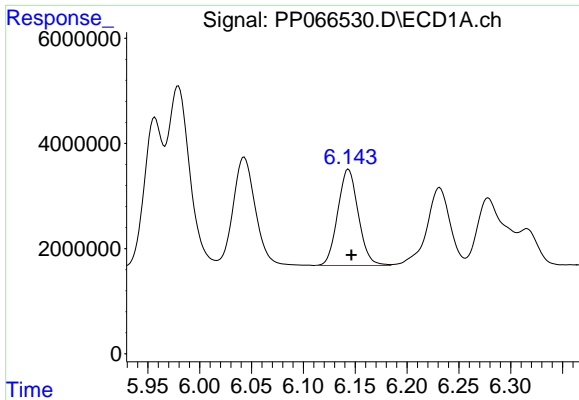
#18 AR-1242-3

R.T.: 6.043 min  
 Delta R.T.: -0.003 min  
 Response: 30846079  
 Conc: 574.92 ng/ml



#18 AR-1242-3

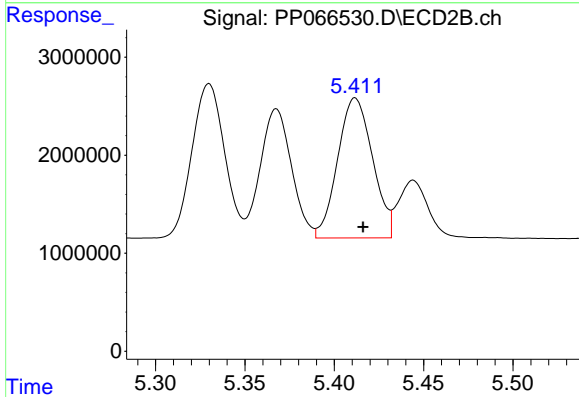
R.T.: 5.330 min  
 Delta R.T.: -0.004 min  
 Response: 20015432  
 Conc: 526.93 ng/ml



#19 AR-1242-4

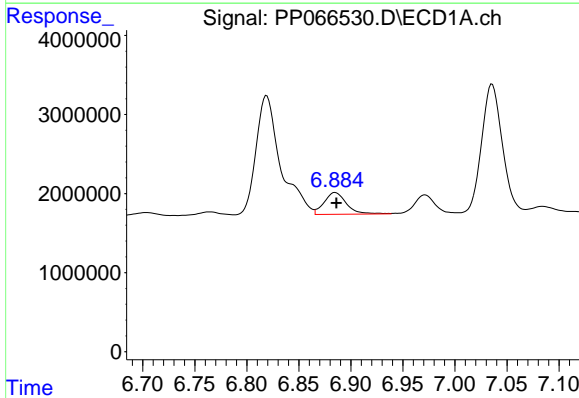
R.T.: 6.143 min  
 Delta R.T.: -0.003 min  
 Response: 25234547  
 Conc: 548.86 ng/ml

Instrument :  
 ECD\_P  
 ClientSampleId :  
 PB162357BS



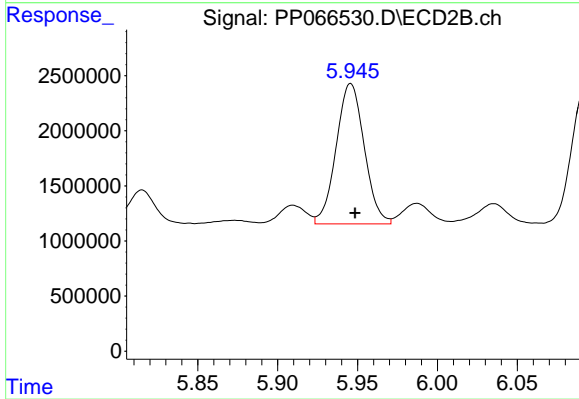
#19 AR-1242-4

R.T.: 5.412 min  
 Delta R.T.: -0.004 min  
 Response: 19433787  
 Conc: 534.13 ng/ml



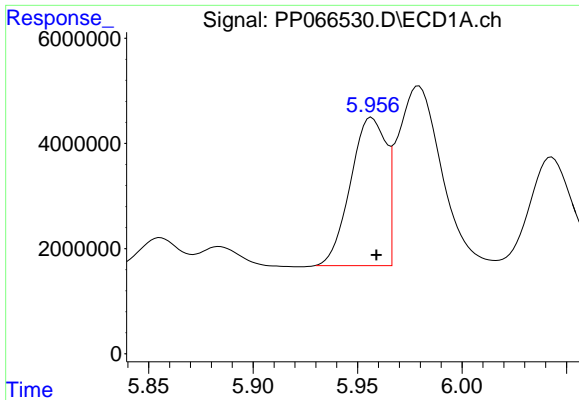
#20 AR-1242-5

R.T.: 6.885 min  
 Delta R.T.: -0.001 min  
 Response: 4133310  
 Conc: 74.14 ng/ml



#20 AR-1242-5

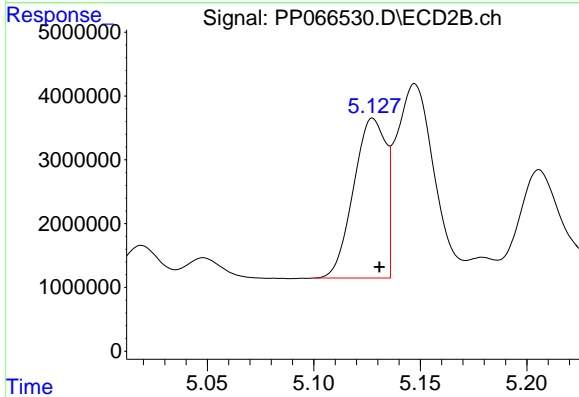
R.T.: 5.946 min  
 Delta R.T.: -0.003 min  
 Response: 15585701  
 Conc: 362.70 ng/ml



#21 AR-1248-1

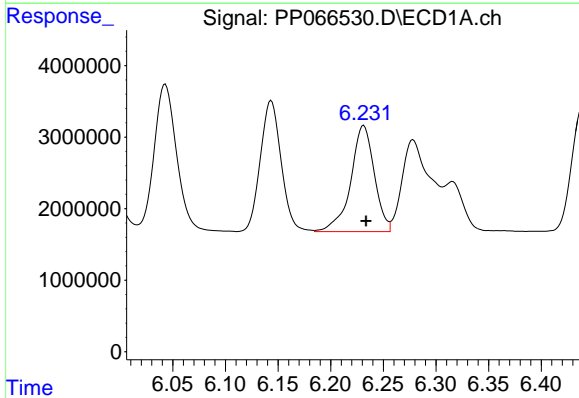
R.T.: 5.957 min  
 Delta R.T.: -0.002 min  
 Response: 33327541  
 Conc: 727.16 ng/ml

Instrument :  
 ECD\_P  
 ClientSampleId :  
 PB162357BS



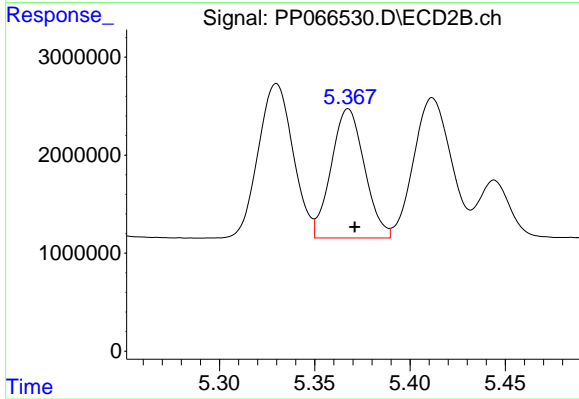
#21 AR-1248-1

R.T.: 5.128 min  
 Delta R.T.: -0.003 min  
 Response: 26343458  
 Conc: 678.41 ng/ml



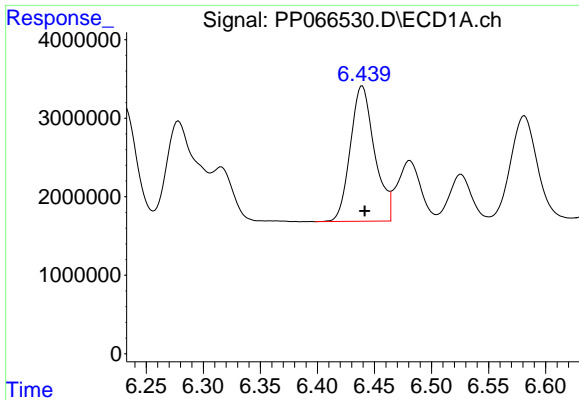
#22 AR-1248-2

R.T.: 6.231 min  
 Delta R.T.: -0.002 min  
 Response: 23138994  
 Conc: 331.76 ng/ml



#22 AR-1248-2

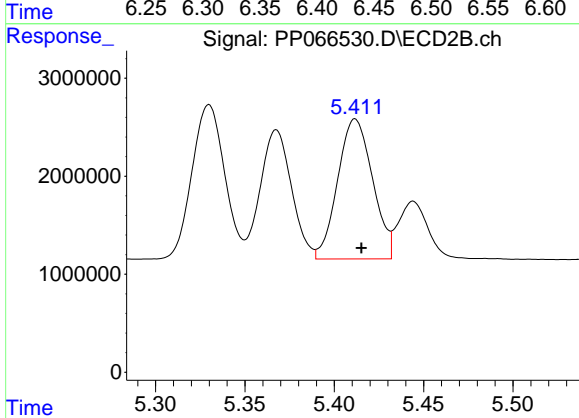
R.T.: 5.368 min  
 Delta R.T.: -0.003 min  
 Response: 16032125  
 Conc: 308.30 ng/ml



#23 AR-1248-3

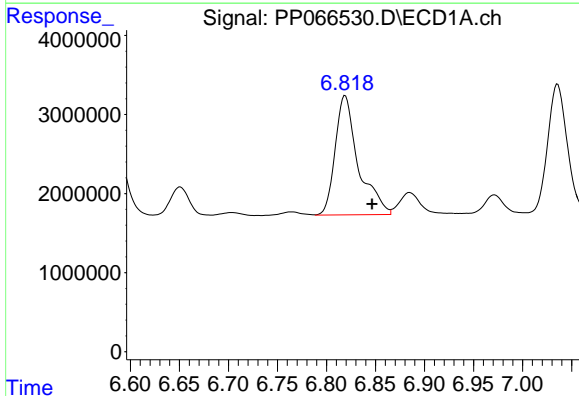
R.T.: 6.439 min  
 Delta R.T.: -0.002 min  
 Response: 25422885  
 Conc: 337.22 ng/ml

Instrument :  
 ECD\_P  
 ClientSampleId :  
 PB162357BS



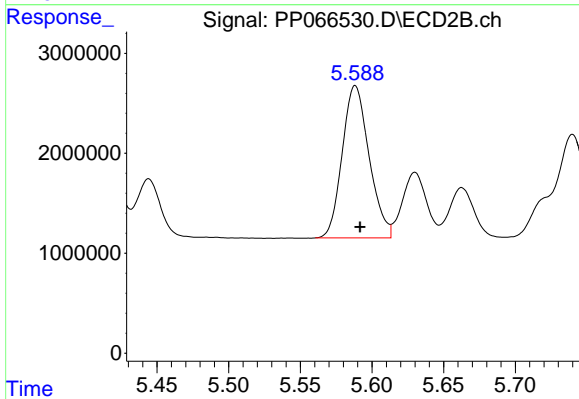
#23 AR-1248-3

R.T.: 5.412 min  
 Delta R.T.: -0.004 min  
 Response: 19433787  
 Conc: 359.49 ng/ml



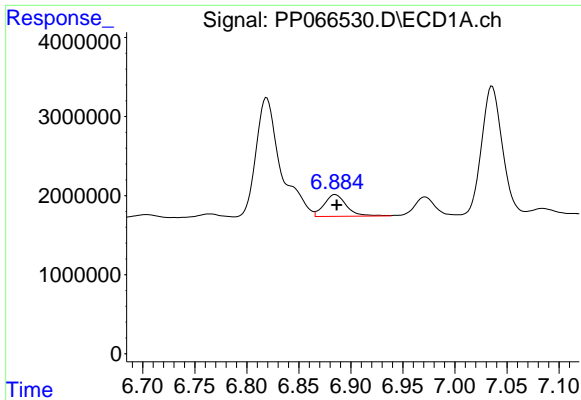
#24 AR-1248-4

R.T.: 6.819 min  
 Delta R.T.: -0.027 min  
 Response: 24796663  
 Conc: 277.65 ng/ml



#24 AR-1248-4

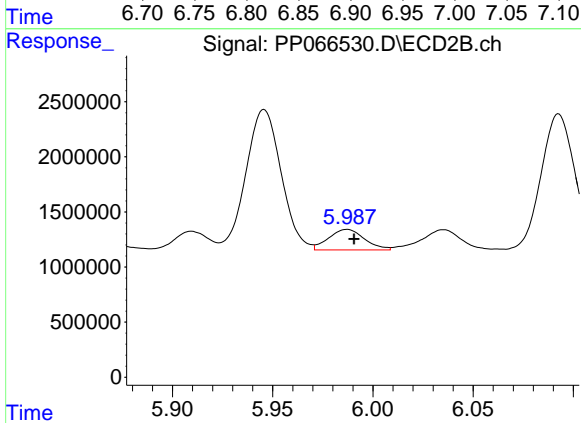
R.T.: 5.588 min  
 Delta R.T.: -0.003 min  
 Response: 19895184  
 Conc: 321.21 ng/ml



#25 AR-1248-5

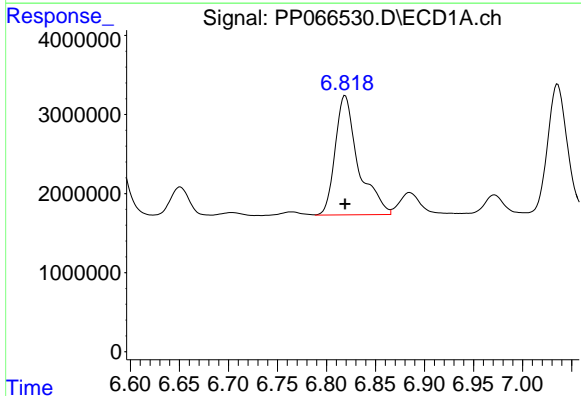
R.T.: 6.885 min  
 Delta R.T.: -0.002 min  
 Response: 4133310  
 Conc: 46.64 ng/ml

Instrument :  
 ECD\_P  
 ClientSampleId :  
 PB162357BS



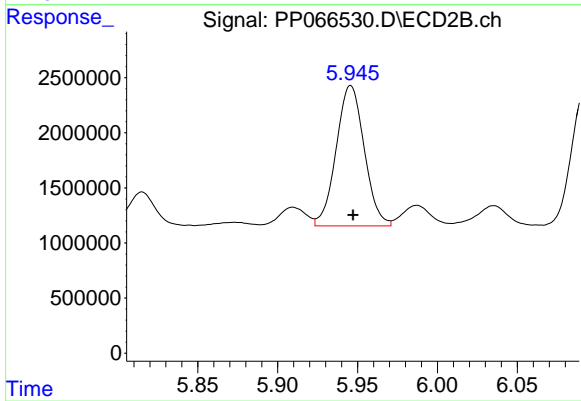
#25 AR-1248-5

R.T.: 5.987 min  
 Delta R.T.: -0.003 min  
 Response: 2314118  
 Conc: 39.80 ng/ml



#26 AR-1254-1

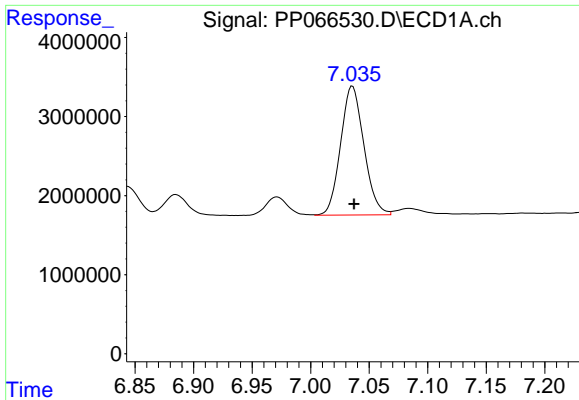
R.T.: 6.819 min  
 Delta R.T.: 0.000 min  
 Response: 24796663  
 Conc: 274.95 ng/ml



#26 AR-1254-1

R.T.: 5.946 min  
 Delta R.T.: -0.001 min  
 Response: 15585701  
 Conc: 179.75 ng/ml

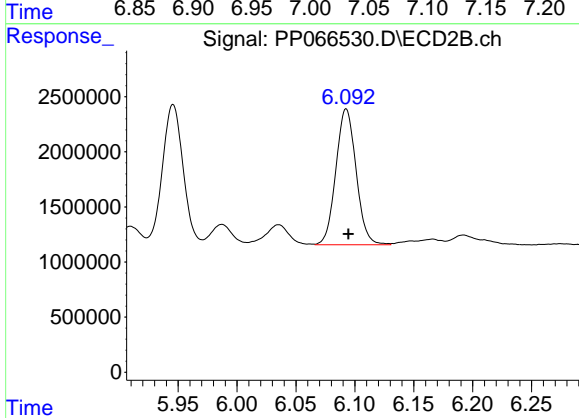




#27 AR-1254-2

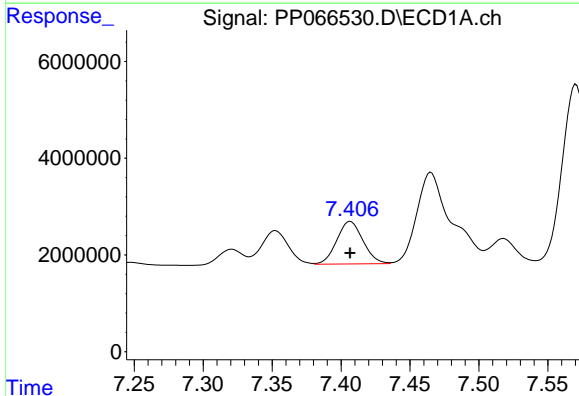
R.T.: 7.036 min  
 Delta R.T.: -0.001 min  
 Response: 22589554  
 Conc: 168.17 ng/ml

Instrument :  
 ECD\_P  
 ClientSampleId :  
 PB162357BS



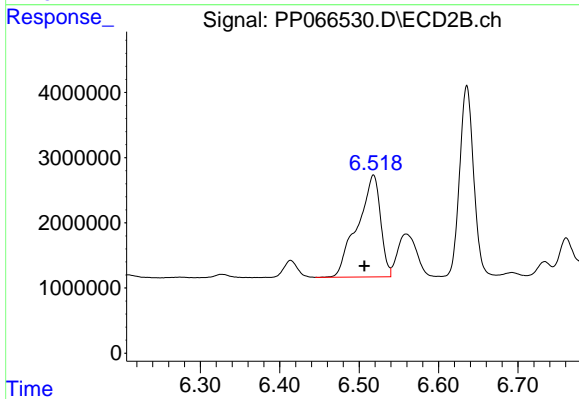
#27 AR-1254-2

R.T.: 6.093 min  
 Delta R.T.: -0.002 min  
 Response: 14776223  
 Conc: 193.97 ng/ml



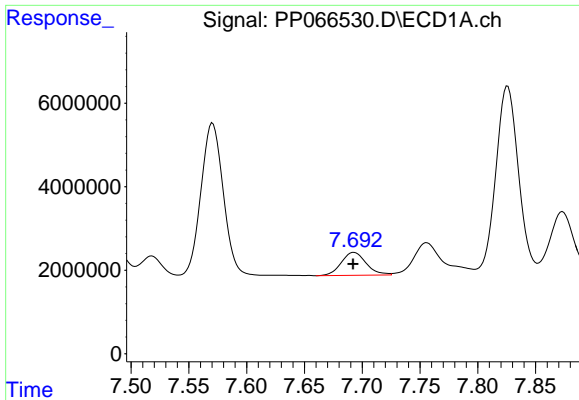
#28 AR-1254-3

R.T.: 7.407 min  
 Delta R.T.: 0.000 min  
 Response: 11651920  
 Conc: 86.48 ng/ml



#28 AR-1254-3

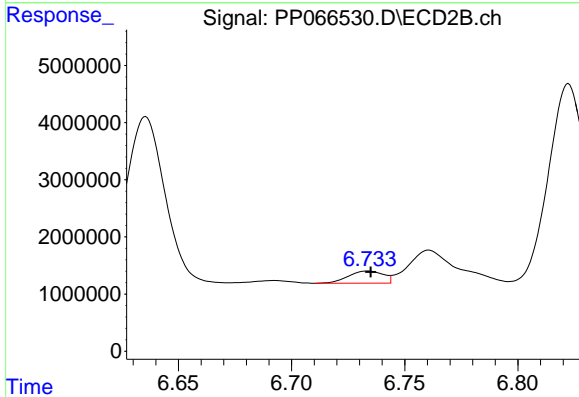
R.T.: 6.518 min  
 Delta R.T.: 0.011 min  
 Response: 31455275  
 Conc: 263.07 ng/ml



#29 AR-1254-4

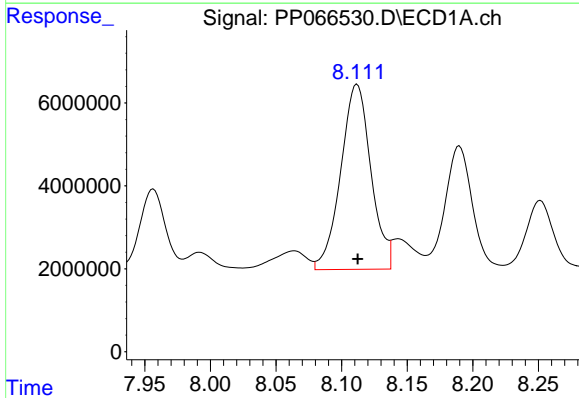
R.T.: 7.693 min  
 Delta R.T.: 0.000 min  
 Response: 8267973  
 Conc: 77.60 ng/ml

Instrument :  
 ECD\_P  
 ClientSampleId :  
 PB162357BS



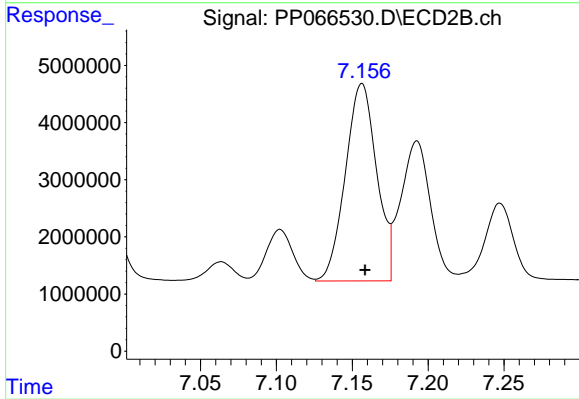
#29 AR-1254-4

R.T.: 6.734 min  
 Delta R.T.: -0.001 min  
 Response: 2292080  
 Conc: 31.95 ng/ml



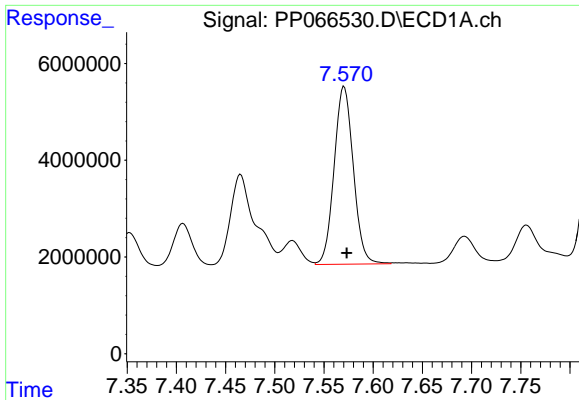
#30 AR-1254-5

R.T.: 8.112 min  
 Delta R.T.: 0.000 min  
 Response: 71571151  
 Conc: 625.58 ng/ml



#30 AR-1254-5

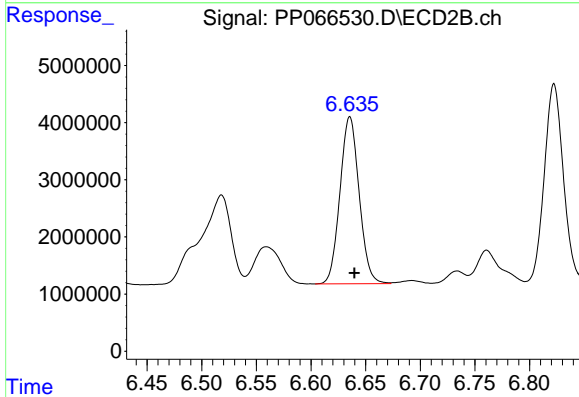
R.T.: 7.156 min  
 Delta R.T.: -0.002 min  
 Response: 49561956  
 Conc: 444.83 ng/ml



#31 AR-1260-1

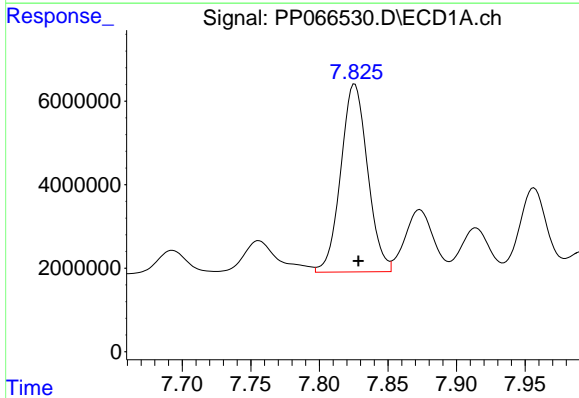
R.T.: 7.571 min  
 Delta R.T.: -0.003 min  
 Response: 49918205  
 Conc: 428.32 ng/ml

Instrument :  
 ECD\_P  
 ClientSampleId :  
 PB162357BS



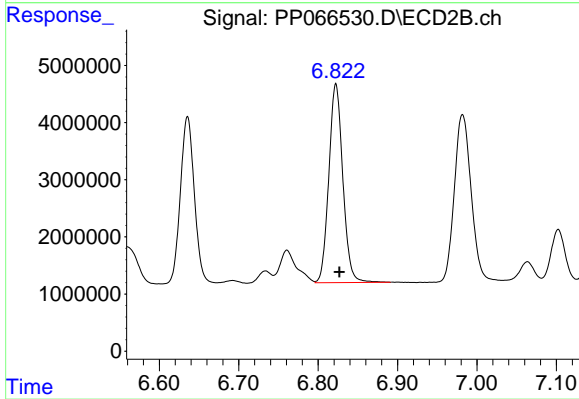
#31 AR-1260-1

R.T.: 6.636 min  
 Delta R.T.: -0.004 min  
 Response: 35695596  
 Conc: 411.15 ng/ml



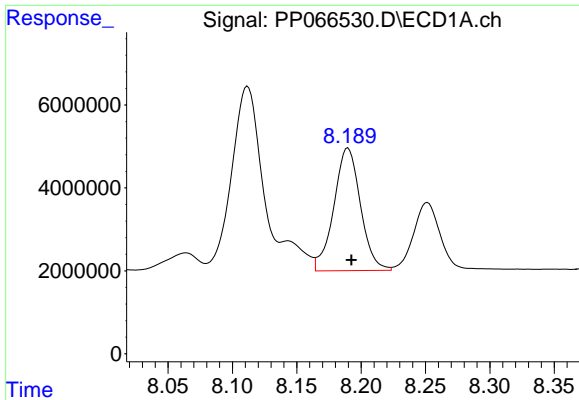
#32 AR-1260-2

R.T.: 7.826 min  
 Delta R.T.: -0.003 min  
 Response: 61249756  
 Conc: 412.91 ng/ml



#32 AR-1260-2

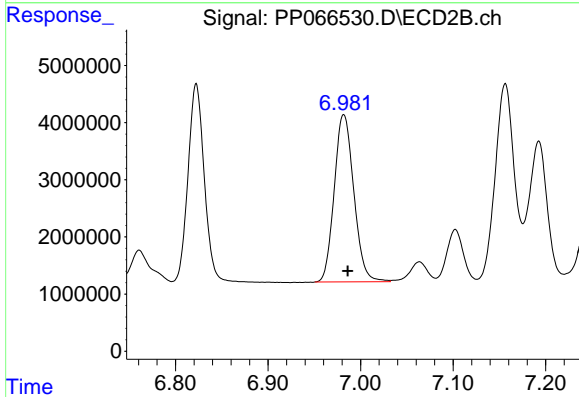
R.T.: 6.822 min  
 Delta R.T.: -0.004 min  
 Response: 42650992  
 Conc: 404.25 ng/ml



#33 AR-1260-3

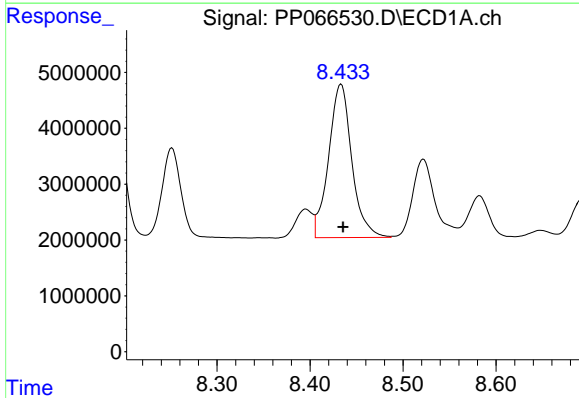
R.T.: 8.190 min  
 Delta R.T.: -0.003 min  
 Response: 42608048  
 Conc: 413.07 ng/ml

Instrument :  
 ECD\_P  
 ClientSampleId :  
 PB162357BS



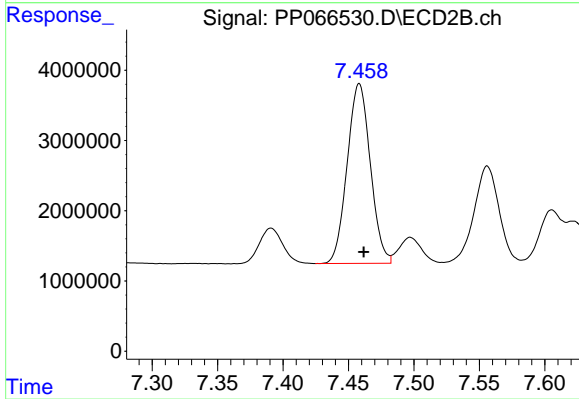
#33 AR-1260-3

R.T.: 6.982 min  
 Delta R.T.: -0.004 min  
 Response: 43078814  
 Conc: 376.09 ng/ml



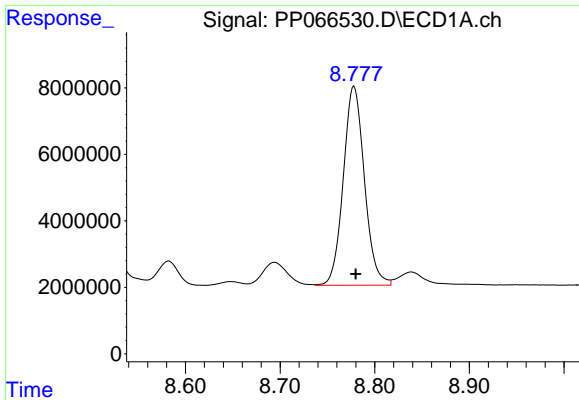
#34 AR-1260-4

R.T.: 8.433 min  
 Delta R.T.: -0.002 min  
 Response: 47651803  
 Conc: 421.85 ng/ml



#34 AR-1260-4

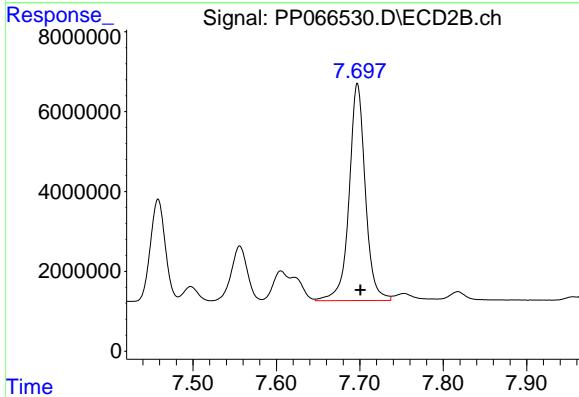
R.T.: 7.458 min  
 Delta R.T.: -0.003 min  
 Response: 31549765  
 Conc: 395.45 ng/ml



#35 AR-1260-5

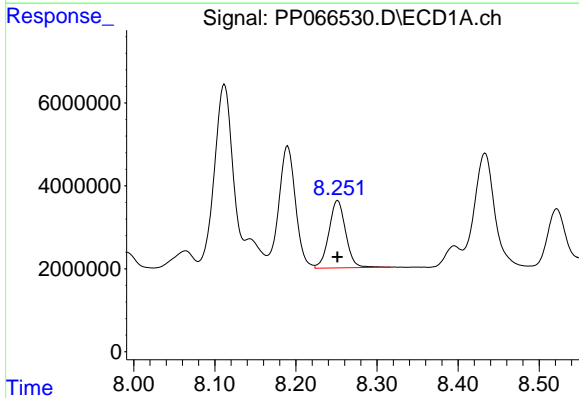
R.T.: 8.778 min  
 Delta R.T.: -0.002 min  
 Response: 92928797  
 Conc: 408.46 ng/ml

Instrument :  
 ECD\_P  
 ClientSampleId :  
 PB162357BS



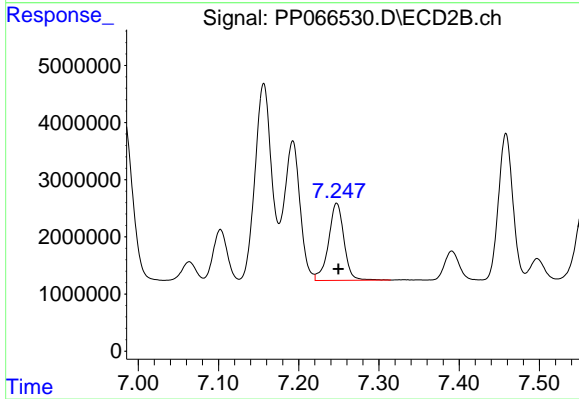
#35 AR-1260-5

R.T.: 7.697 min  
 Delta R.T.: -0.004 min  
 Response: 73273549  
 Conc: 398.67 ng/ml



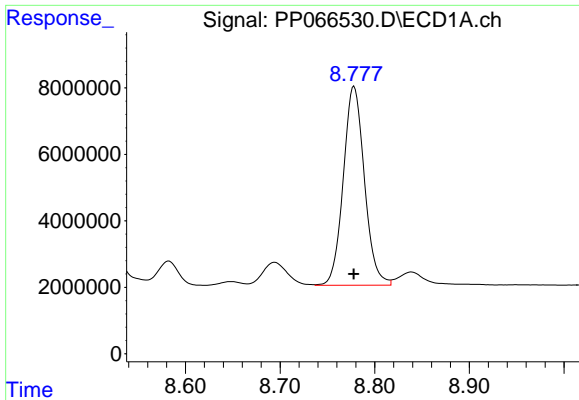
#36 AR-1262-1

R.T.: 8.252 min  
 Delta R.T.: 0.000 min  
 Response: 23318327  
 Conc: 363.63 ng/ml



#36 AR-1262-1

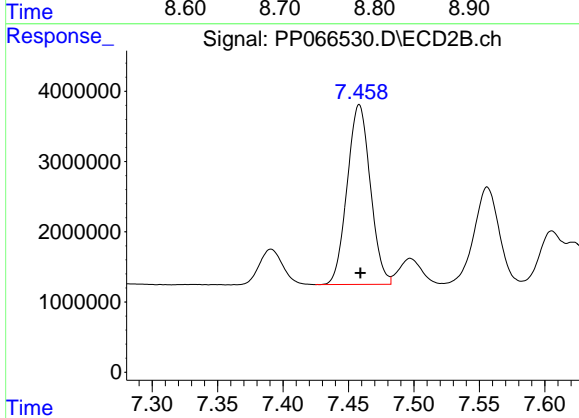
R.T.: 7.247 min  
 Delta R.T.: -0.002 min  
 Response: 18078494  
 Conc: 376.80 ng/ml



#37 AR-1262-2

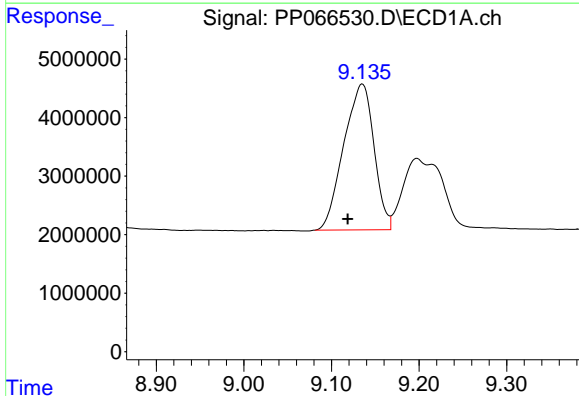
R.T.: 8.778 min  
 Delta R.T.: 0.000 min  
 Response: 92928797  
 Conc: 359.22 ng/ml

Instrument :  
 ECD\_P  
 ClientSampleId :  
 PB162357BS



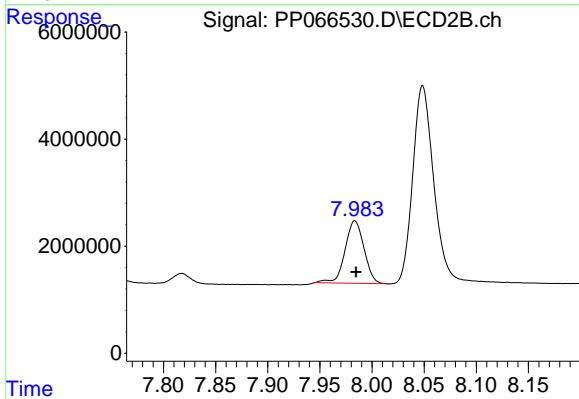
#37 AR-1262-2

R.T.: 7.458 min  
 Delta R.T.: 0.000 min  
 Response: 31549765  
 Conc: 304.93 ng/ml



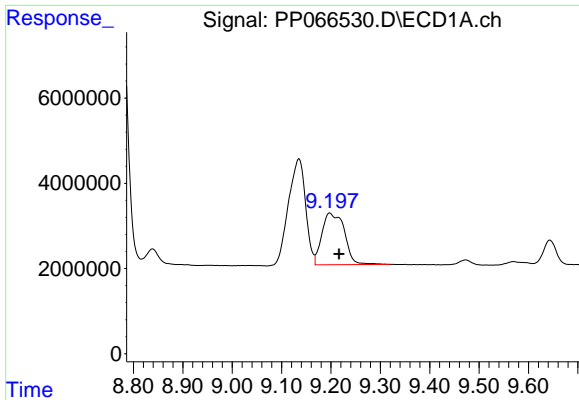
#38 AR-1262-3

R.T.: 9.135 min  
 Delta R.T.: 0.017 min  
 Response: 59867722  
 Conc: 329.60 ng/ml



#38 AR-1262-3

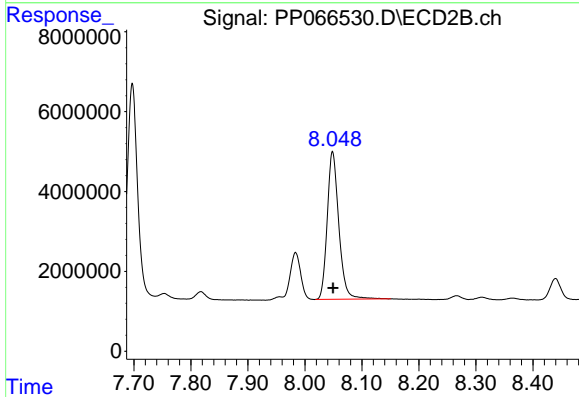
R.T.: 7.984 min  
 Delta R.T.: -0.001 min  
 Response: 14790096  
 Conc: 176.00 ng/ml



#39 AR-1262-4

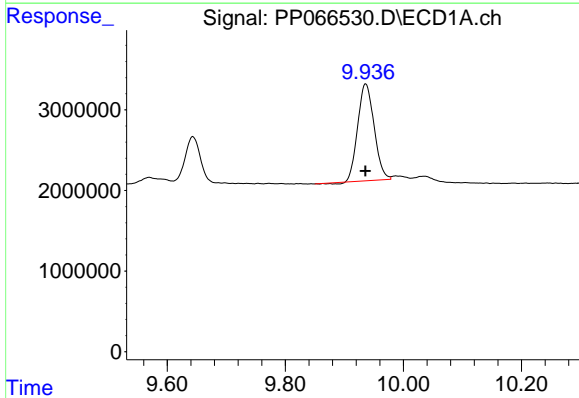
R.T.: 9.198 min  
 Delta R.T.: -0.018 min  
 Response: 38458704  
 Conc: 255.63 ng/ml

Instrument :  
 ECD\_P  
 ClientSampleId :  
 PB162357BS



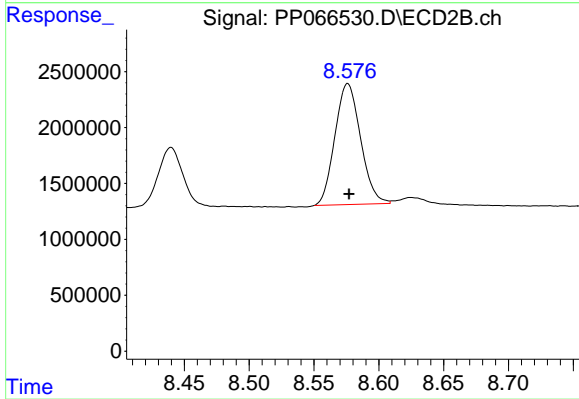
#39 AR-1262-4

R.T.: 8.049 min  
 Delta R.T.: -0.001 min  
 Response: 52453904  
 Conc: 345.94 ng/ml



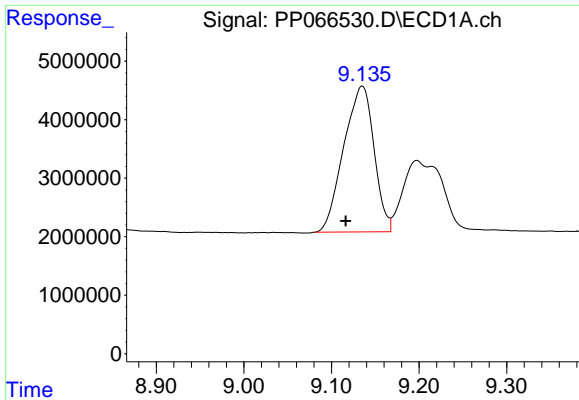
#40 AR-1262-5

R.T.: 9.936 min  
 Delta R.T.: 0.000 min  
 Response: 23088251  
 Conc: 243.79 ng/ml



#40 AR-1262-5

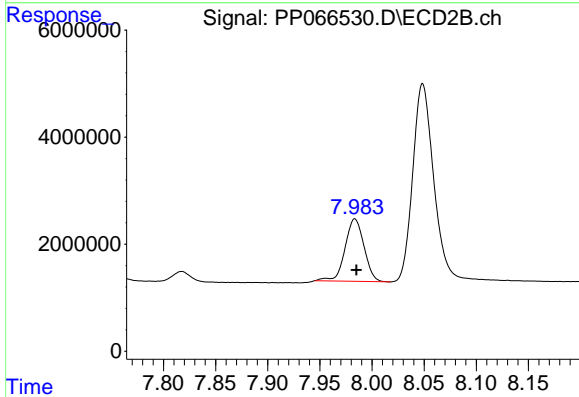
R.T.: 8.576 min  
 Delta R.T.: -0.001 min  
 Response: 14927268  
 Conc: 235.39 ng/ml



#41 AR-1268-1

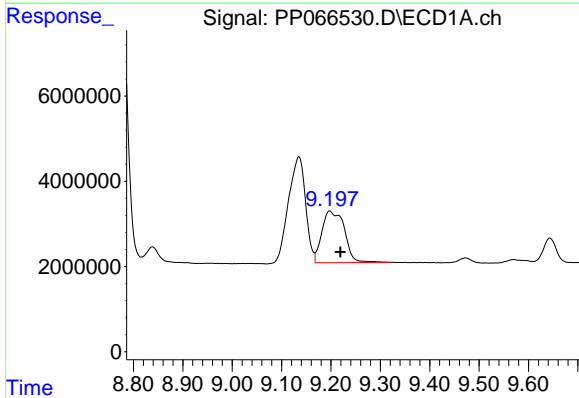
R.T.: 9.135 min  
 Delta R.T.: 0.019 min  
 Response: 59867722  
 Conc: 177.90 ng/ml

Instrument :  
 ECD\_P  
 ClientSampleId :  
 PB162357BS



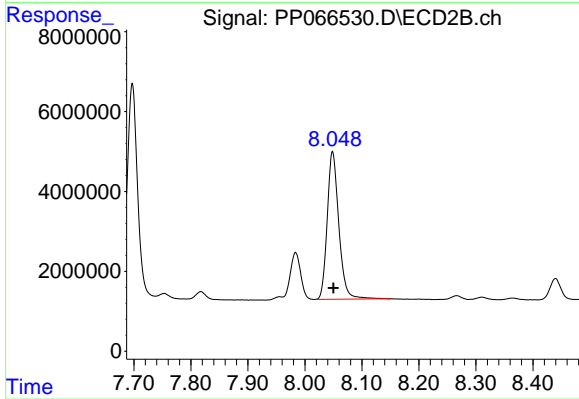
#41 AR-1268-1

R.T.: 7.984 min  
 Delta R.T.: -0.001 min  
 Response: 14790096  
 Conc: 61.21 ng/ml



#42 AR-1268-2

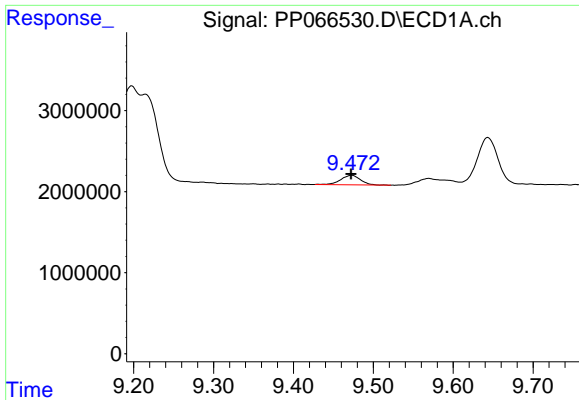
R.T.: 9.198 min  
 Delta R.T.: -0.022 min  
 Response: 38458704  
 Conc: 121.64 ng/ml



#42 AR-1268-2

R.T.: 8.049 min  
 Delta R.T.: -0.002 min  
 Response: 52453904  
 Conc: 237.21 ng/ml

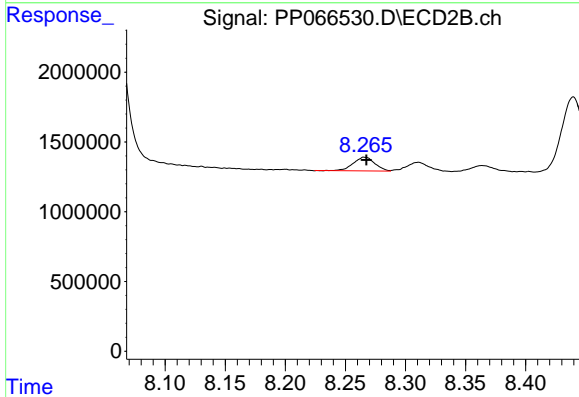




#43 AR-1268-3

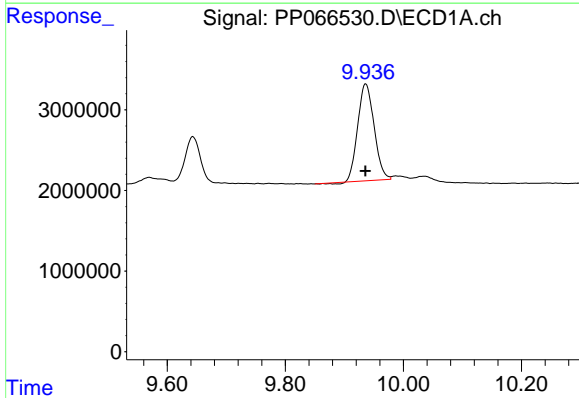
R.T.: 9.473 min  
 Delta R.T.: 0.001 min  
 Response: 2070059  
 Conc: 7.16 ng/ml

Instrument :  
 ECD\_P  
 ClientSampleId :  
 PB162357BS



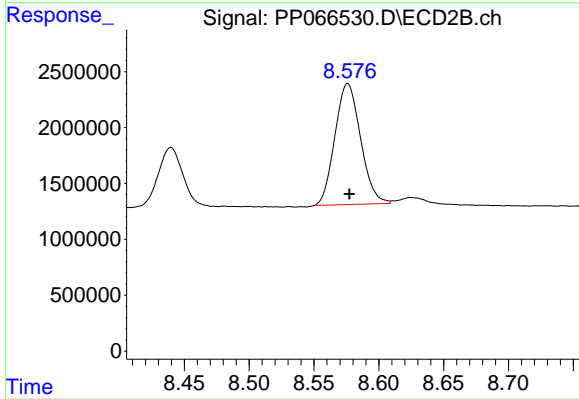
#43 AR-1268-3

R.T.: 8.266 min  
 Delta R.T.: -0.001 min  
 Response: 1228888  
 Conc: 6.39 ng/ml



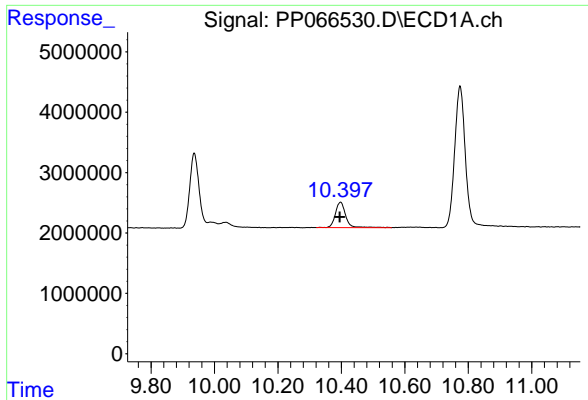
#44 AR-1268-4

R.T.: 9.936 min  
 Delta R.T.: 0.000 min  
 Response: 23088251  
 Conc: 217.85 ng/ml



#44 AR-1268-4

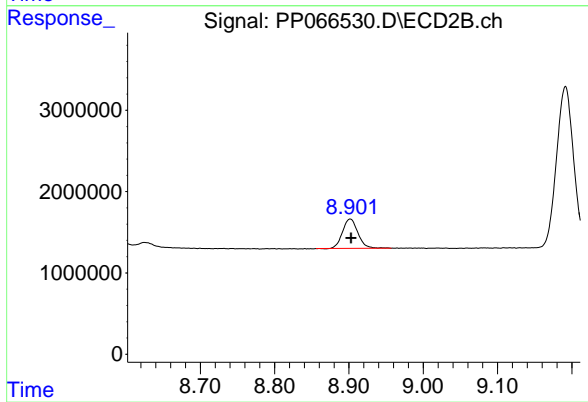
R.T.: 8.576 min  
 Delta R.T.: -0.001 min  
 Response: 14927268  
 Conc: 212.38 ng/ml



#45 AR-1268-5

R.T.: 10.397 min  
Delta R.T.: 0.003 min  
Response: 9566395  
Conc: 10.89 ng/ml

Instrument :  
ECD\_P  
ClientSampleId :  
PB162357BS



#45 AR-1268-5

R.T.: 8.902 min  
Delta R.T.: -0.001 min  
Response: 5241045  
Conc: 9.65 ng/ml