

Data Path : Z:\pestpcbsrv\HPCHEM1\ECD_P\Data\PP073123\
 Data File : PP059106.D
 Signal(s) : Signal #1: ECD1A.ch Signal #2: ECD2B.ch
 Acq On : 01 Aug 2023 00:34
 Operator : YP\AJ
 Sample : AR1254ICC250
 Misc :
 ALS Vial : 23 Sample Multiplier: 1

Instrument :
 ECD_P
ClientSampleId :
 AR1254ICC250

Integration File signal 1: autoint1.e
 Integration File signal 2: autoint2.e
 Quant Time: Aug 01 04:29:19 2023
 Quant Method : Z:\pestpcbsrv\HPCHEM1\ECD_P\methods\PP073123.M
 Quant Title : GC EXTRACTABLES
 QLast Update : Tue Aug 01 04:29:12 2023
 Response via : Initial Calibration
 Integrator: ChemStation

Volume Inj. : 2 µl
 Signal #1 Phase : ZB-MR1 Signal #2 Phase: ZB-MR2
 Signal #1 Info : 30Mx0.32mmx 0.50µ Signal #2 Info : 30M x 0.32mm x 0.25µm

Compound	RT#1	RT#2	Resp#1	Resp#2	ng/ml	ng/ml

System Monitoring Compounds						
1) SA Tetrachlo...	4.420	3.655	42909289	62905124	25.832	25.563
2) SA Decachlor...	10.214	8.693	25298344	36115671	26.575	26.666
Target Compounds						
26) L6 AR-1254-1	6.456	5.556	15868263	28148423	270.187	261.784
27) L6 AR-1254-2	6.676	5.705	22315830	24175985	266.935	264.540
28) L6 AR-1254-3	7.044	6.110	20830135	36401922	265.941	261.547
29) L6 AR-1254-4	7.330	6.340	13552105	20324022	269.107	264.407
30) L6 AR-1254-5	7.750	6.759	14876762	30075384	270.564	263.286

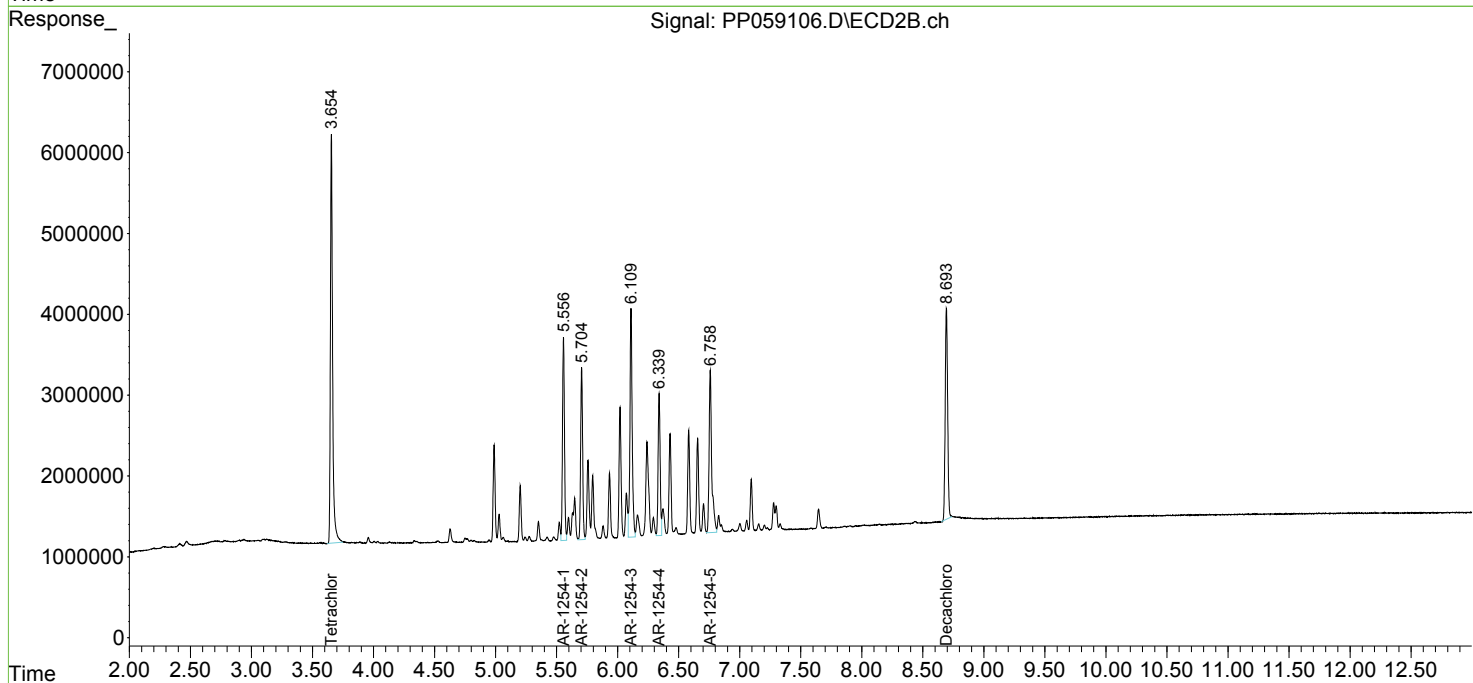
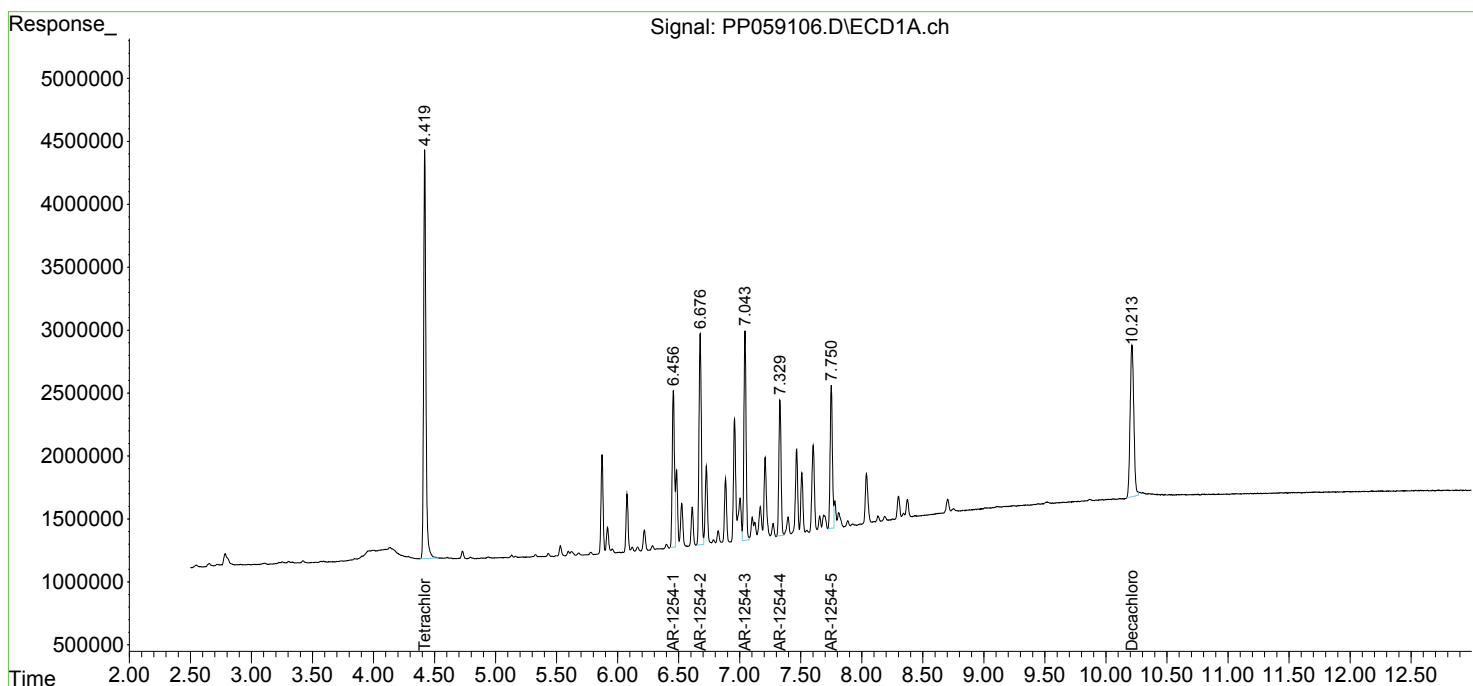
(f)=RT Delta > 1/2 Window (#)=Amounts differ by > 25% (m)=manual int.

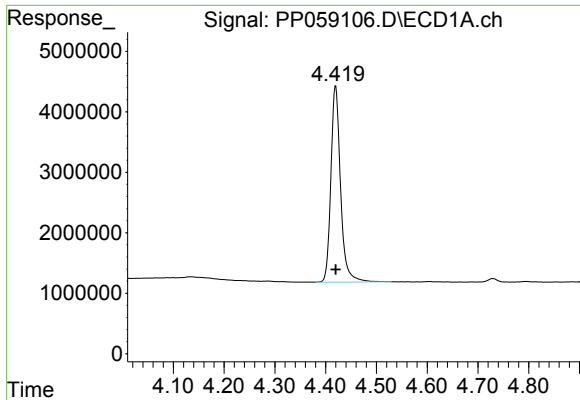
Data Path : Z:\pestpcbsrv\HPCHEM1\ECD_P\Data\PP073123\
 Data File : PP059106.D
 Signal(s) : Signal #1: ECD1A.ch Signal #2: ECD2B.ch
 Acq On : 01 Aug 2023 00:34
 Operator : YP\AJ
 Sample : AR1254ICC250
 Misc :
 ALS Vial : 23 Sample Multiplier: 1

Instrument :
 ECD_P
 ClientSampleId :
 AR1254ICC250

Integration File signal 1: autoint1.e
 Integration File signal 2: autoint2.e
 Quant Time: Aug 01 04:29:19 2023
 Quant Method : Z:\pestpcbsrv\HPCHEM1\ECD_P\methods\PP073123.M
 Quant Title : GC EXTRACTABLES
 QLast Update : Tue Aug 01 04:29:12 2023
 Response via : Initial Calibration
 Integrator: ChemStation

Volume Inj. : 2 µl
 Signal #1 Phase : ZB-MR1 Signal #2 Phase: ZB-MR2
 Signal #1 Info : 30Mx0.32mmx 0.50µ Signal #2 Info : 30M x 0.32mm x 0.25µm

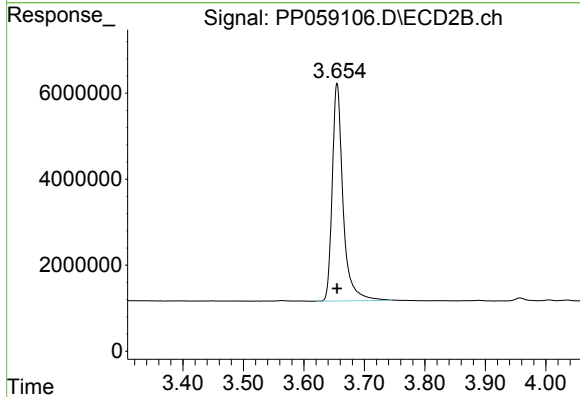




#1 Tetrachloro-m-xylene

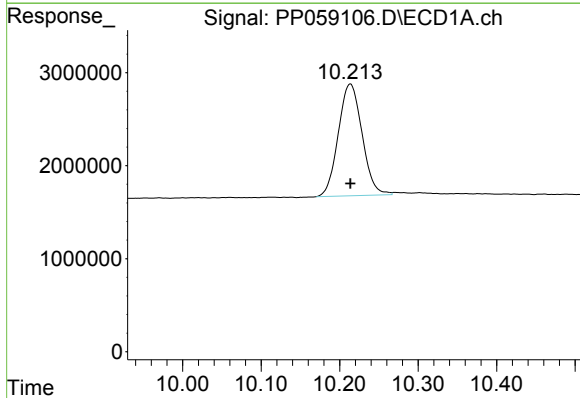
R.T.: 4.420 min
Delta R.T.: 0.000 min
Response: 42909289
Conc: 25.83 ng/ml

Instrument :
ECD_P
ClientSampleId :
AR1254ICC250



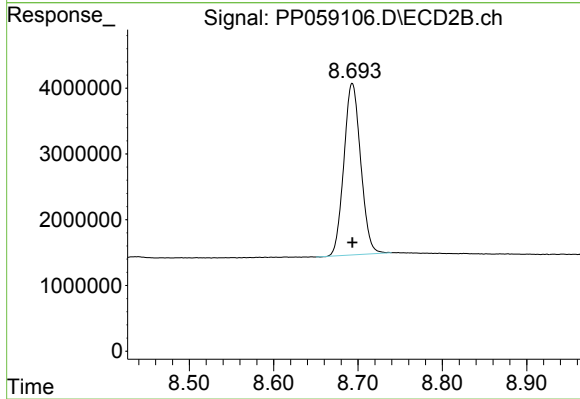
#1 Tetrachloro-m-xylene

R.T.: 3.655 min
Delta R.T.: 0.000 min
Response: 62905124
Conc: 25.56 ng/ml



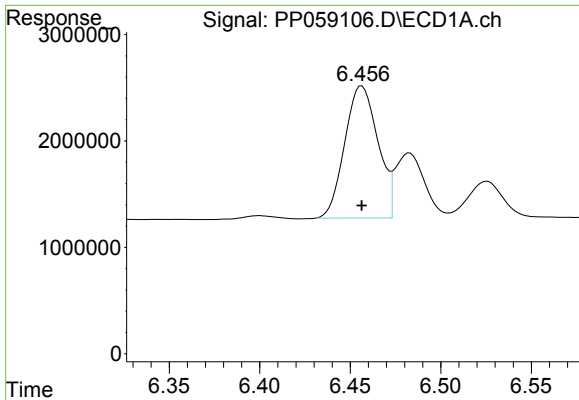
#2 Decachlorobiphenyl

R.T.: 10.214 min
Delta R.T.: 0.000 min
Response: 25298344
Conc: 26.57 ng/ml



#2 Decachlorobiphenyl

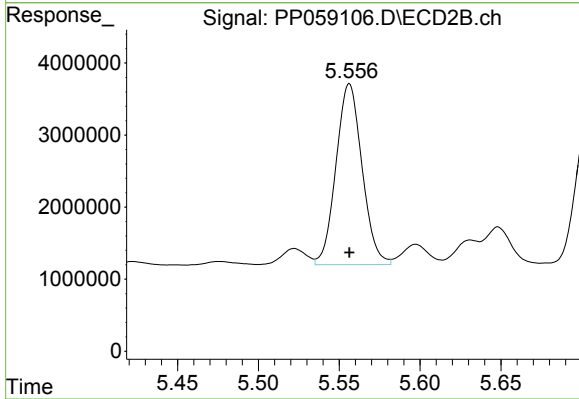
R.T.: 8.693 min
Delta R.T.: 0.000 min
Response: 36115671
Conc: 26.67 ng/ml



#26 AR-1254-1

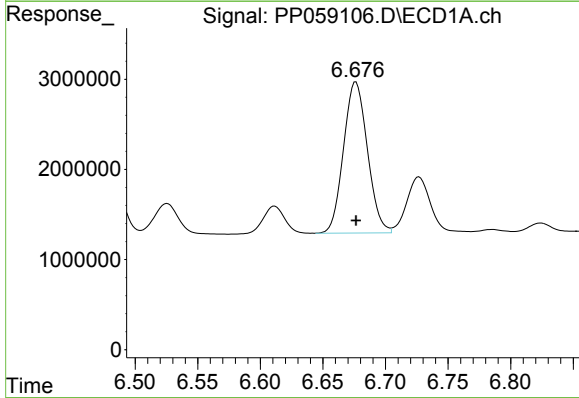
R.T.: 6.456 min
 Delta R.T.: 0.000 min
 Response: 15868263
 Conc: 270.19 ng/ml

Instrument :
 ECD_P
 ClientSampleId :
 AR1254ICC250



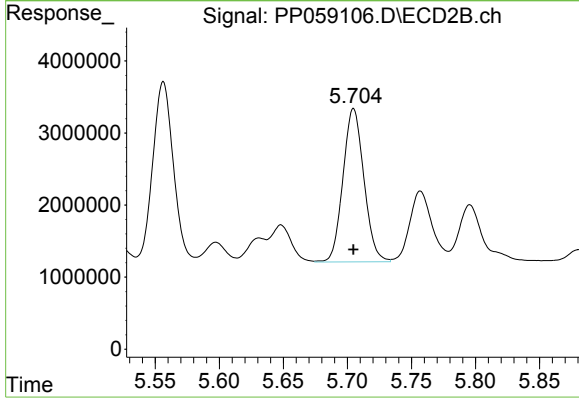
#26 AR-1254-1

R.T.: 5.556 min
 Delta R.T.: 0.000 min
 Response: 28148423
 Conc: 261.78 ng/ml



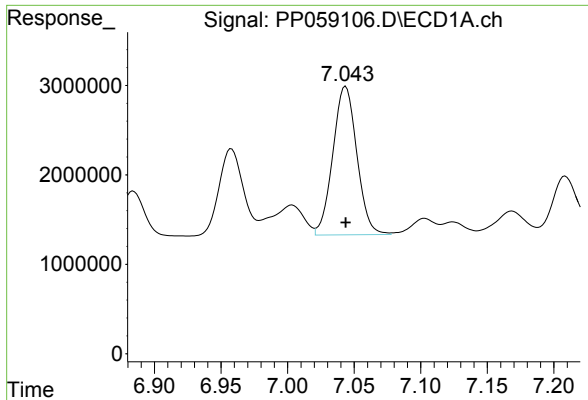
#27 AR-1254-2

R.T.: 6.676 min
 Delta R.T.: 0.000 min
 Response: 22315830
 Conc: 266.94 ng/ml



#27 AR-1254-2

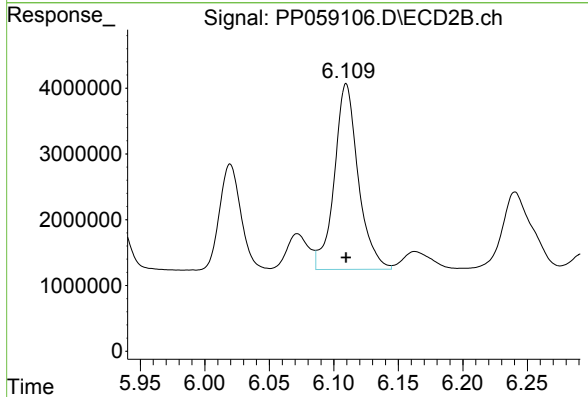
R.T.: 5.705 min
 Delta R.T.: 0.000 min
 Response: 24175985
 Conc: 264.54 ng/ml



#28 AR-1254-3

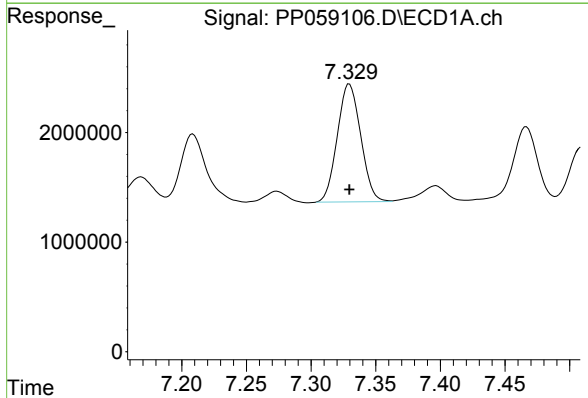
R.T.: 7.044 min
 Delta R.T.: 0.000 min
 Response: 20830135
 Conc: 265.94 ng/ml

Instrument :
 ECD_P
 ClientSampleId :
 AR1254ICC250



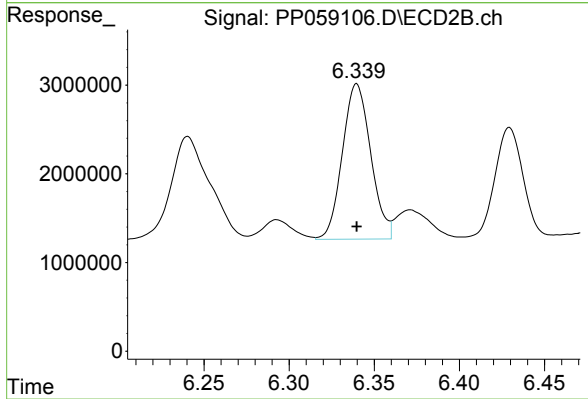
#28 AR-1254-3

R.T.: 6.110 min
 Delta R.T.: 0.000 min
 Response: 36401922
 Conc: 261.55 ng/ml



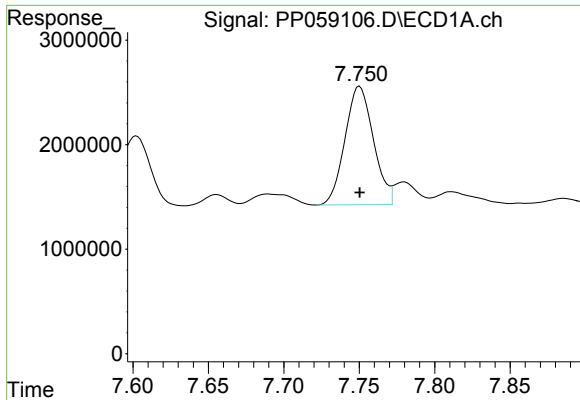
#29 AR-1254-4

R.T.: 7.330 min
 Delta R.T.: 0.000 min
 Response: 13552105
 Conc: 269.11 ng/ml



#29 AR-1254-4

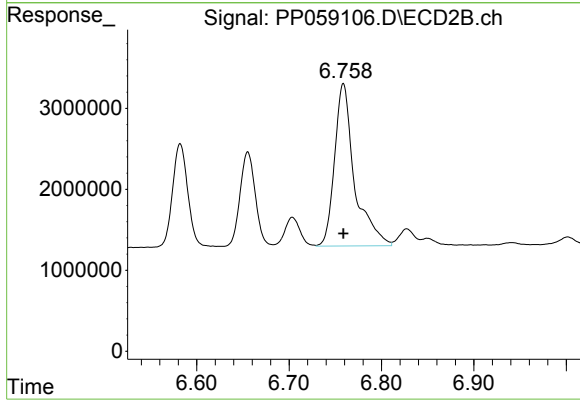
R.T.: 6.340 min
 Delta R.T.: 0.000 min
 Response: 20324022
 Conc: 264.41 ng/ml



#30 AR-1254-5

R.T.: 7.750 min
Delta R.T.: 0.000 min
Response: 14876762
Conc: 270.56 ng/ml

Instrument :
ECD_P
ClientSampleId :
AR1254ICC250



#30 AR-1254-5

R.T.: 6.759 min
Delta R.T.: 0.000 min
Response: 30075384
Conc: 263.29 ng/ml