

Data Path : Z:\pestpcbsrv\HPCHEM1\ECD\_P\Data\PP073124\  
 Data File : PP066540.D  
 Signal(s) : Signal #1: ECD1A.ch Signal #2: ECD2B.ch  
 Acq On : 31 Jul 2024 10:53  
 Operator : YP\AJ  
 Sample : AR1660CCC500  
 Misc :  
 ALS Vial : 3 Sample Multiplier: 1

**Instrument :**  
 ECD\_P  
**ClientSampleId :**  
 AR1660CCC500

Integration File signal 1: autoint1.e  
 Integration File signal 2: autoint2.e  
 Quant Time: Jul 31 14:09:35 2024  
 Quant Method : Z:\pestpcbsrv\HPCHEM1\ECD\_P\methods\PP073024.M  
 Quant Title : GC EXTRACTABLES  
 QLast Update : Wed Jul 31 09:17:22 2024  
 Response via : Initial Calibration  
 Integrator: ChemStation

Volume Inj. : 2 µl  
 Signal #1 Phase : ZB-MR1 Signal #2 Phase: ZB-MR2  
 Signal #1 Info : 30Mx0.32mmx 0.50µ Signal #2 Info : 30M x 0.32mm x 0.25µm

Compound	RT#1	RT#2	Resp#1	Resp#2	ng/ml	ng/ml
-----						
System Monitoring Compounds						
1) SA Tetrachlo...	4.778	4.018	114.0E6	119.8E6	58.938	58.513
2) SA Decachlor...	10.773	9.192	109.8E6	70938373	43.424	45.385
Target Compounds						
3) L1 AR-1016-1	5.958	5.130	39885200	34637463	526.224	553.922
4) L1 AR-1016-2	5.981	5.150	60264112	48603195	527.760	546.598
5) L1 AR-1016-3	6.045	5.332	36460725	25966821	523.935	557.717
6) L1 AR-1016-4	6.144	5.370	29895464	20596517	523.184	559.741
7) L1 AR-1016-5	6.442	5.591	31985442	25762203	570.620	559.091
31) L7 AR-1260-1	7.572	6.638	51264030	43468016	439.867	500.672
32) L7 AR-1260-2	7.827	6.825	59255192	51062329	399.467	483.976
33) L7 AR-1260-3	8.191	6.984	41338827	49973870	400.765	436.285
34) L7 AR-1260-4	8.434	7.460	46364649	35638105	410.459	446.699
35) L7 AR-1260-5	8.778	7.699	92945645	82822807	408.531	450.622

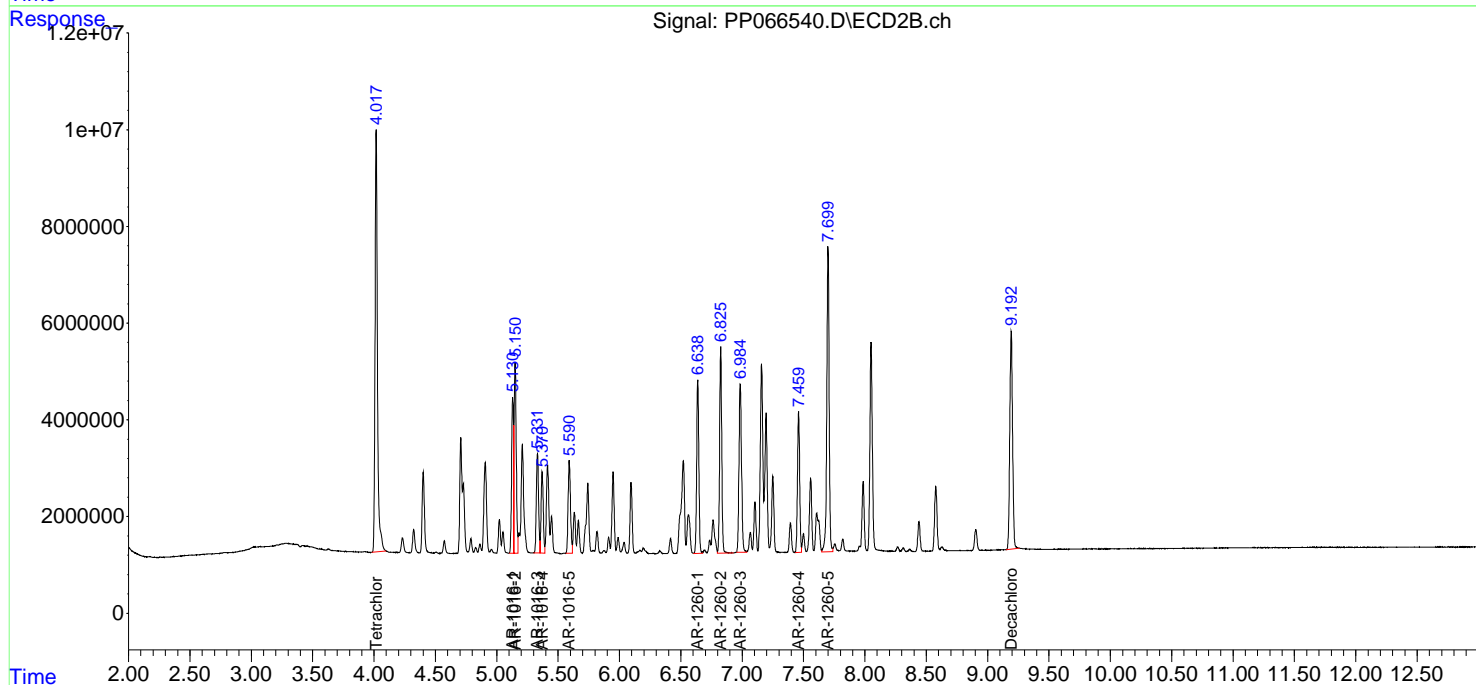
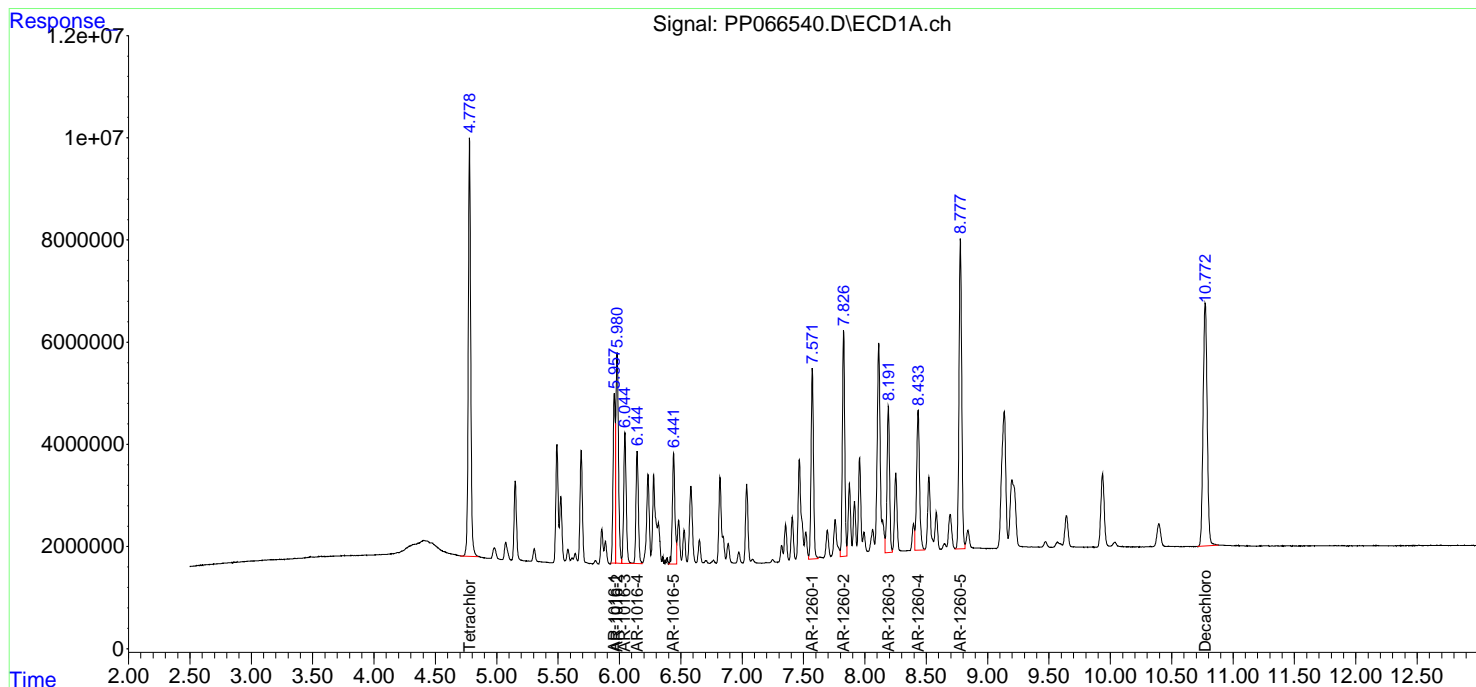
(f)=RT Delta > 1/2 Window (#)=Amounts differ by > 25% (m)=manual int.

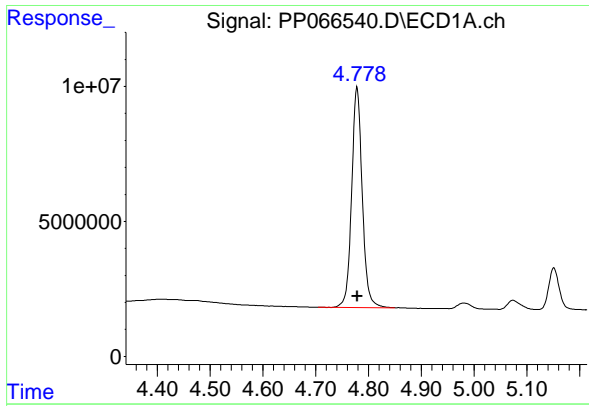
Data Path : Z:\pestpcbsrv\HPCHEM1\ECD\_P\Data\PP073124\  
 Data File : PP066540.D  
 Signal(s) : Signal #1: ECD1A.ch Signal #2: ECD2B.ch  
 Acq On : 31 Jul 2024 10:53  
 Operator : YP\AJ  
 Sample : AR1660CCC500  
 Misc :  
 ALS Vial : 3 Sample Multiplier: 1

Instrument :  
 ECD\_P  
 ClientSampleId :  
 AR1660CCC500

Integration File signal 1: autoint1.e  
 Integration File signal 2: autoint2.e  
 Quant Time: Jul 31 14:09:35 2024  
 Quant Method : Z:\pestpcbsrv\HPCHEM1\ECD\_P\methods\PP073024.M  
 Quant Title : GC EXTRACTABLES  
 QLast Update : Wed Jul 31 09:17:22 2024  
 Response via : Initial Calibration  
 Integrator: ChemStation

Volume Inj. : 2 µl  
 Signal #1 Phase : ZB-MR1 Signal #2 Phase: ZB-MR2  
 Signal #1 Info : 30Mx0.32mmx 0.50µ Signal #2 Info : 30M x 0.32mm x 0.25µm

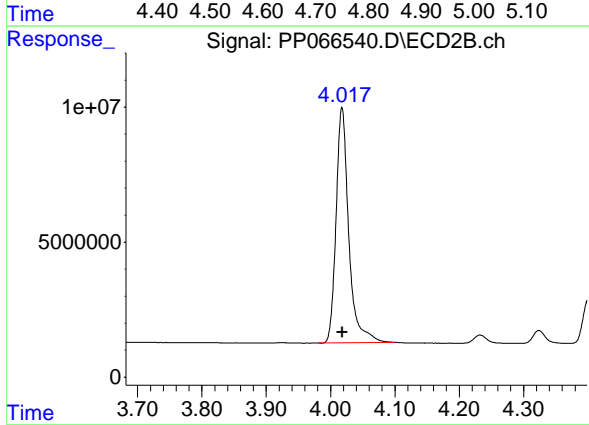




#1 Tetrachloro-m-xylene

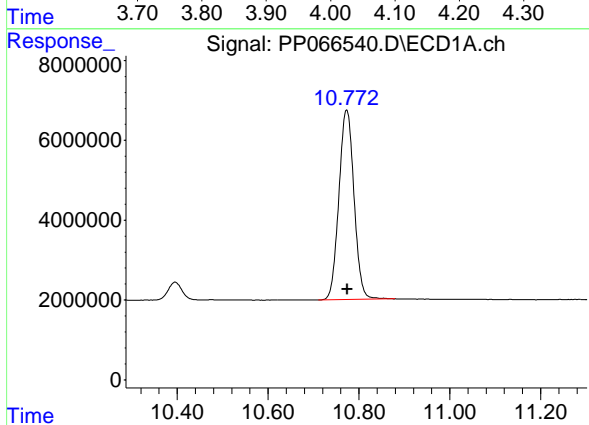
R.T.: 4.778 min  
 Delta R.T.: 0.000 min  
 Response: 113972151  
 Conc: 58.94 ng/ml

Instrument : ECD\_P  
 ClientSampleId : AR1660CCC500



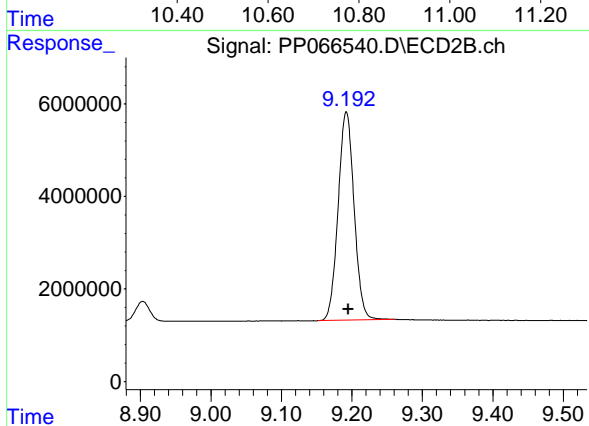
#1 Tetrachloro-m-xylene

R.T.: 4.018 min  
 Delta R.T.: 0.000 min  
 Response: 119809272  
 Conc: 58.51 ng/ml



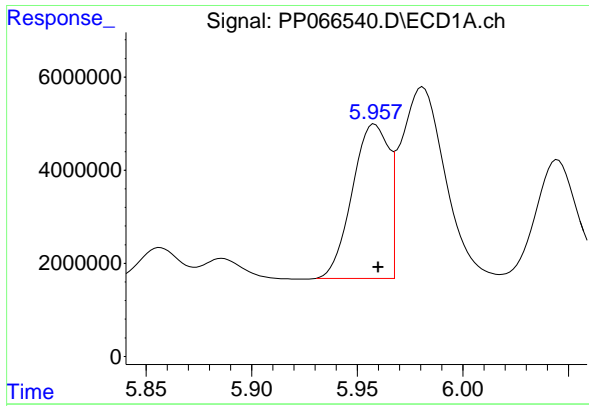
#2 Decachlorobiphenyl

R.T.: 10.773 min  
 Delta R.T.: -0.001 min  
 Response: 109812331  
 Conc: 43.42 ng/ml



#2 Decachlorobiphenyl

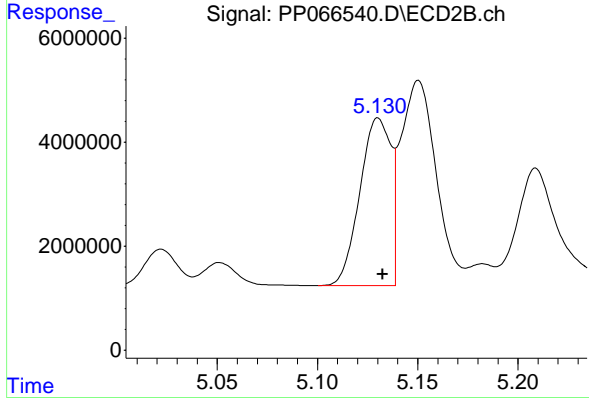
R.T.: 9.192 min  
 Delta R.T.: -0.003 min  
 Response: 70938373  
 Conc: 45.39 ng/ml



#3 AR-1016-1

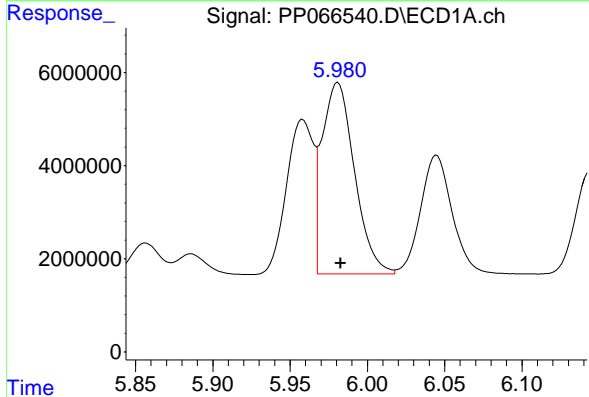
R.T.: 5.958 min  
 Delta R.T.: -0.002 min  
 Response: 39885200  
 Conc: 526.22 ng/ml

Instrument :  
 ECD\_P  
 ClientSampleId :  
 AR1660CCC500



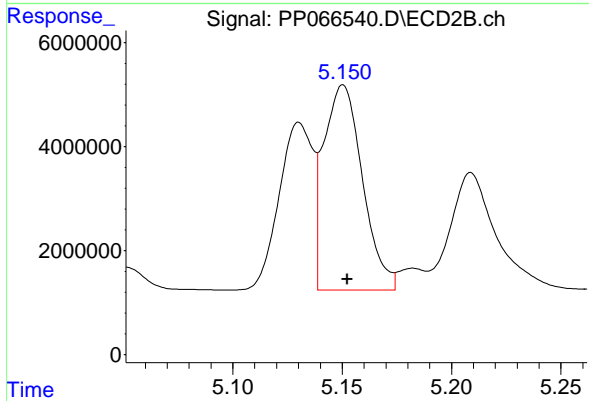
#3 AR-1016-1

R.T.: 5.130 min  
 Delta R.T.: -0.002 min  
 Response: 34637463  
 Conc: 553.92 ng/ml



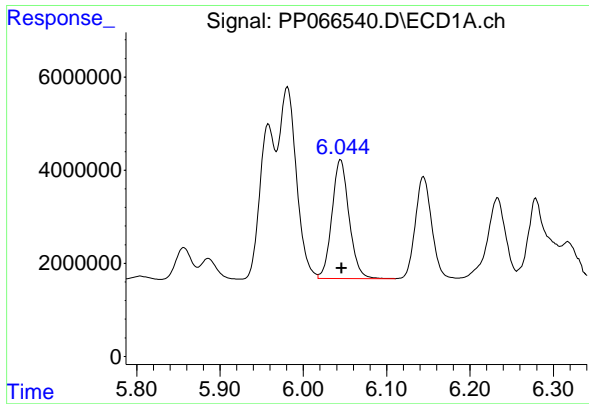
#4 AR-1016-2

R.T.: 5.981 min  
 Delta R.T.: -0.002 min  
 Response: 60264112  
 Conc: 527.76 ng/ml



#4 AR-1016-2

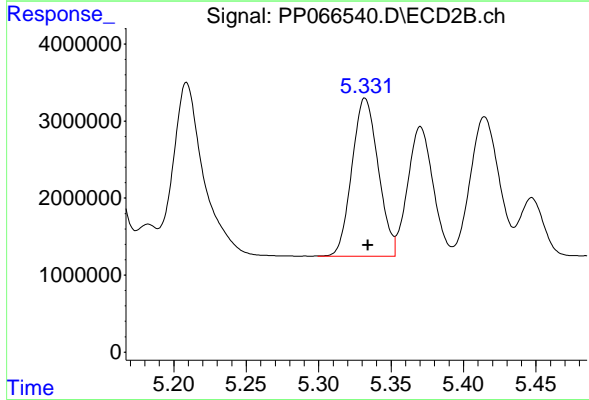
R.T.: 5.150 min  
 Delta R.T.: -0.002 min  
 Response: 48603195  
 Conc: 546.60 ng/ml



#5 AR-1016-3

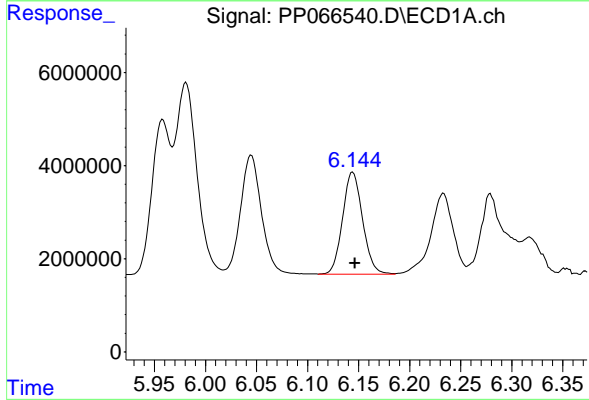
R.T.: 6.045 min  
 Delta R.T.: -0.001 min  
 Response: 36460725  
 Conc: 523.93 ng/ml

Instrument :  
 ECD\_P  
 ClientSampleId :  
 AR1660CCC500



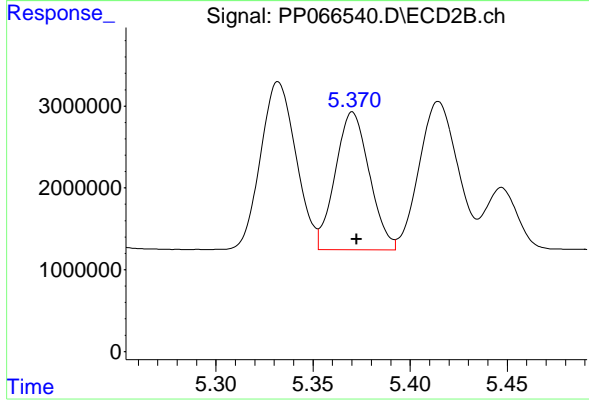
#5 AR-1016-3

R.T.: 5.332 min  
 Delta R.T.: -0.002 min  
 Response: 25966821  
 Conc: 557.72 ng/ml



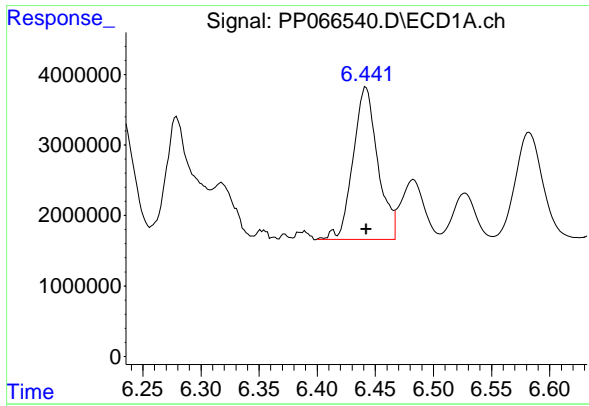
#6 AR-1016-4

R.T.: 6.144 min  
 Delta R.T.: -0.002 min  
 Response: 29895464  
 Conc: 523.18 ng/ml



#6 AR-1016-4

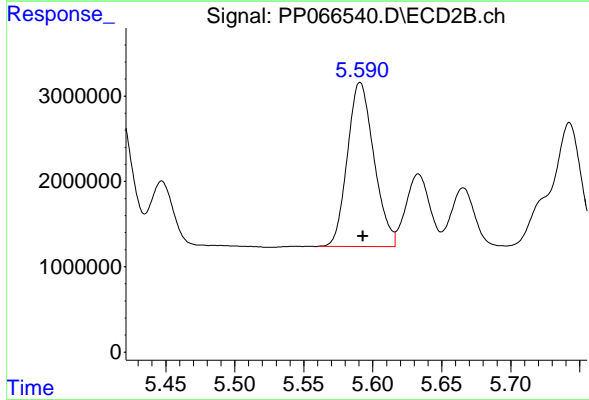
R.T.: 5.370 min  
 Delta R.T.: -0.002 min  
 Response: 20596517  
 Conc: 559.74 ng/ml



#7 AR-1016-5

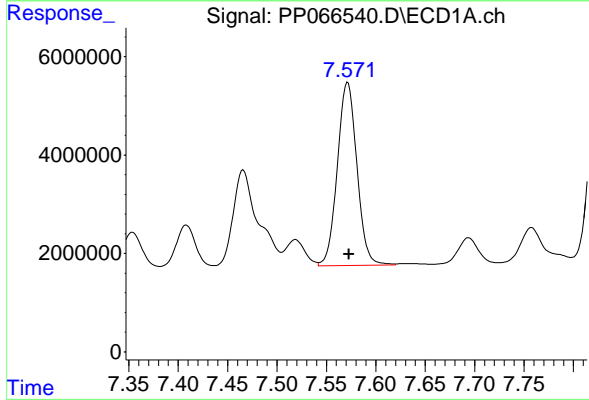
R.T.: 6.442 min  
 Delta R.T.: 0.000 min  
 Response: 31985442  
 Conc: 570.62 ng/ml

Instrument :  
 ECD\_P  
 ClientSampleId :  
 AR1660CCC500



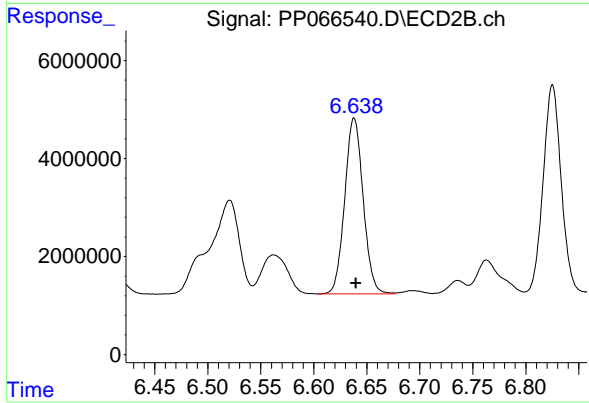
#7 AR-1016-5

R.T.: 5.591 min  
 Delta R.T.: -0.002 min  
 Response: 25762203  
 Conc: 559.09 ng/ml



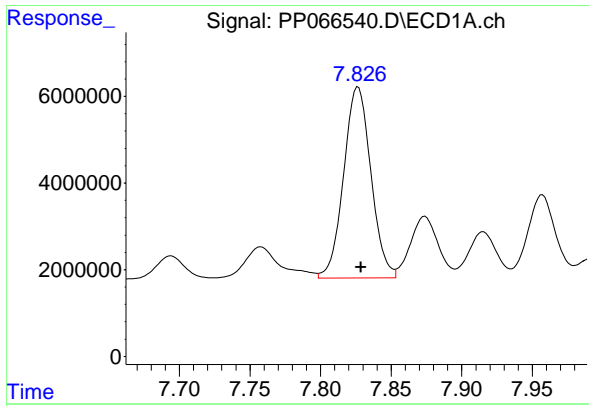
#31 AR-1260-1

R.T.: 7.572 min  
 Delta R.T.: -0.002 min  
 Response: 51264030  
 Conc: 439.87 ng/ml



#31 AR-1260-1

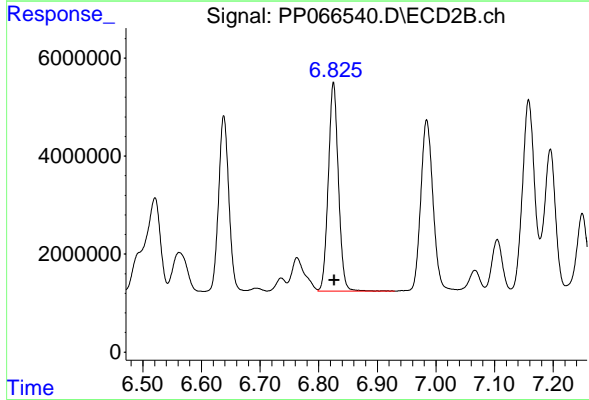
R.T.: 6.638 min  
 Delta R.T.: -0.002 min  
 Response: 43468016  
 Conc: 500.67 ng/ml



#32 AR-1260-2

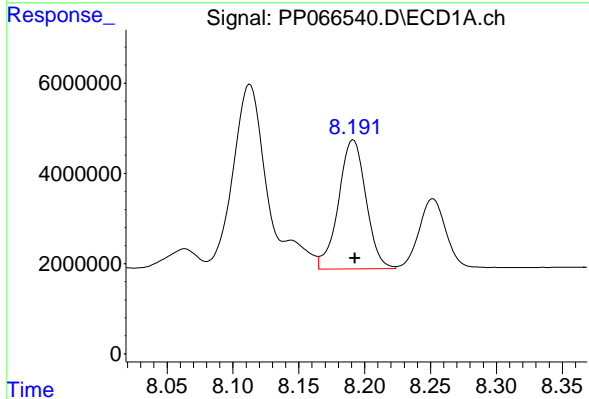
R.T.: 7.827 min  
Delta R.T.: -0.002 min  
Response: 59255192  
Conc: 399.47 ng/ml

Instrument :  
ECD\_P  
ClientSampleId :  
AR1660CCC500



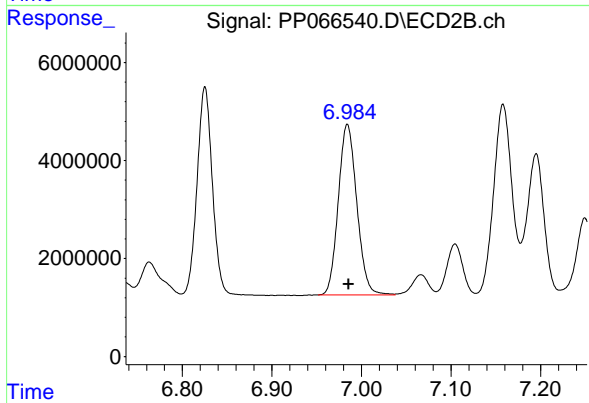
#32 AR-1260-2

R.T.: 6.825 min  
Delta R.T.: -0.001 min  
Response: 51062329  
Conc: 483.98 ng/ml



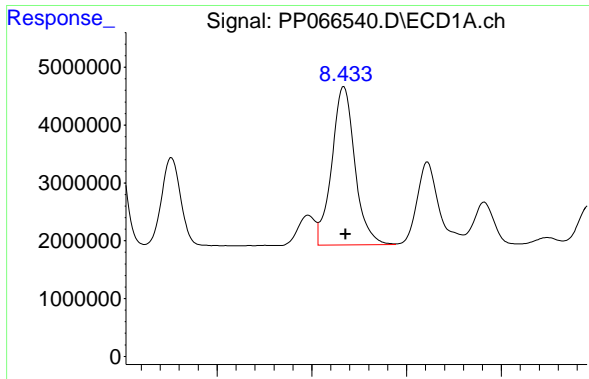
#33 AR-1260-3

R.T.: 8.191 min  
Delta R.T.: -0.001 min  
Response: 41338827  
Conc: 400.76 ng/ml



#33 AR-1260-3

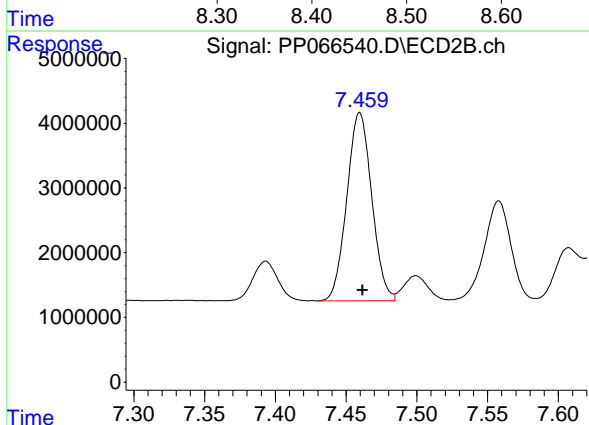
R.T.: 6.984 min  
Delta R.T.: -0.002 min  
Response: 49973870  
Conc: 436.29 ng/ml



#34 AR-1260-4

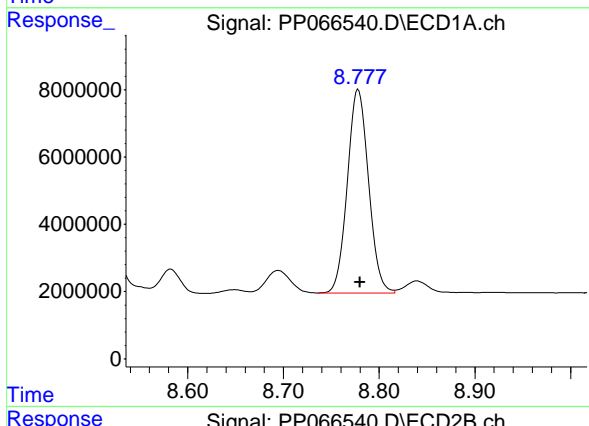
R.T.: 8.434 min  
Delta R.T.: -0.002 min  
Response: 46364649  
Conc: 410.46 ng/ml

Instrument :  
ECD\_P  
ClientSampleId :  
AR1660CCC500



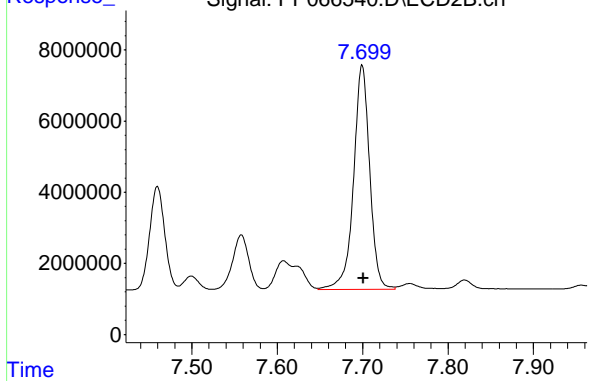
#34 AR-1260-4

R.T.: 7.460 min  
Delta R.T.: -0.002 min  
Response: 35638105  
Conc: 446.70 ng/ml



#35 AR-1260-5

R.T.: 8.778 min  
Delta R.T.: -0.002 min  
Response: 92945645  
Conc: 408.53 ng/ml



#35 AR-1260-5

R.T.: 7.699 min  
Delta R.T.: -0.001 min  
Response: 82822807  
Conc: 450.62 ng/ml