

Data Path : Z:\pestpcbsrv\HPCHEM1\ECD P\Data\PP080118\
 Data File : PP026936.D
 Signal(s) : Signal #1: ECD1A.CH Signal #2: ECD2B.CH
 Acq On : 01 Aug 2018 16:38
 Operator : EI\MA
 Sample : PB111669BL
 Misc :
 ALS Vial : 4 Sample Multiplier: 1

Instrument :
 ECD_P
ClientSampled :
 PB111669BL

Manual Integrations
APPROVED
 Sohil
 8/2/2018 5:56:12 PM

Integration File signal 1: autoint1.e
 Integration File signal 2: autoint2.e
 Quant Time: Aug 02 05:48:30 2018
 Quant Method : Z:\pestpcbsrv\HPCHEM1\ECD_P\methods\PP073018.M
 Quant Title : 8080.M
 QLast Update : Tue Jul 31 01:31:14 2018
 Response via : Initial Calibration
 Integrator: ChemStation 6890 Scale Mode: Large solvent peaks clipped

Volume Inj. : 2 µl
 Signal #1 Phase : ZB-CLPesticides-1 Signal #2 Phase: ZB-CLPesticides-2
 Signal #1 Info : 30M x 0.32mm x0.5 Signal #2 Info : 30M x 0.32mm x 0.25µm

Compound	RT#1	RT#2	Resp#1	Resp#2	nq/ml	nq/ml

System Monitoring Compounds						
4) S 2,4-DCAA	12.042	12.154	119.4E6	184.3E6	499.801m	455.181

Target Compounds

(f)=RT Delta > 1/2 Window (#)=Amounts differ by > 25% (m)=manual int.

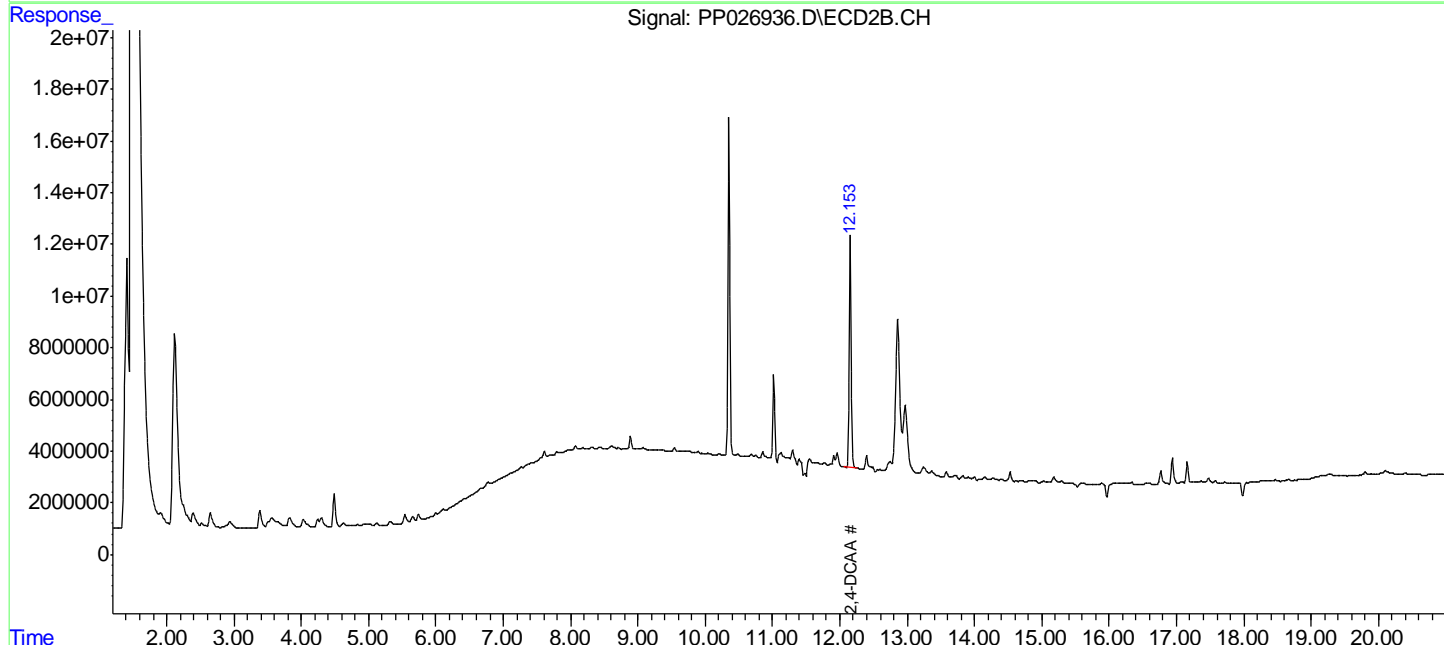
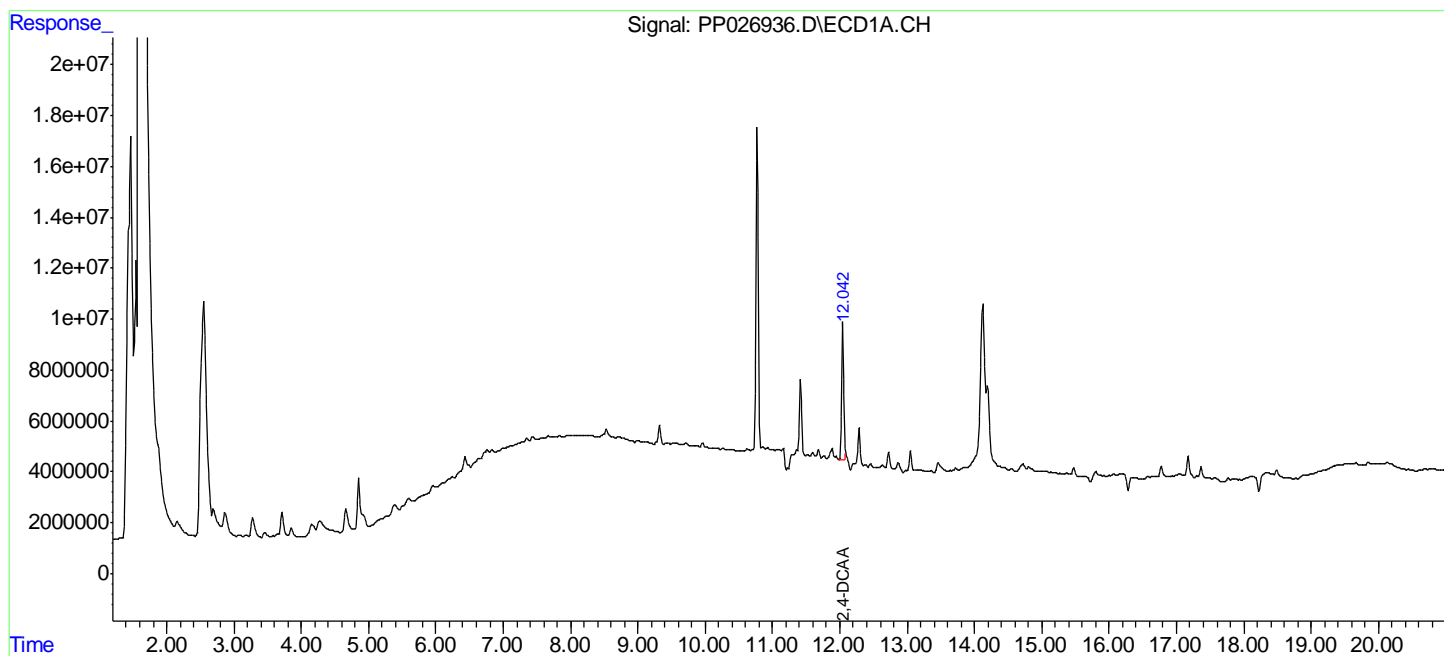
Data Path : Z:\pestpcbsrv\HPCHEM1\ECD P\Data\PP080118\
 Data File : PP026936.D
 Signal(s) : Signal #1: ECD1A.CH Signal #2: ECD2B.CH
 Acq On : 01 Aug 2018 16:38
 Operator : EI\MA
 Sample : PB111669BL
 Misc :
 ALS Vial : 4 Sample Multiplier: 1

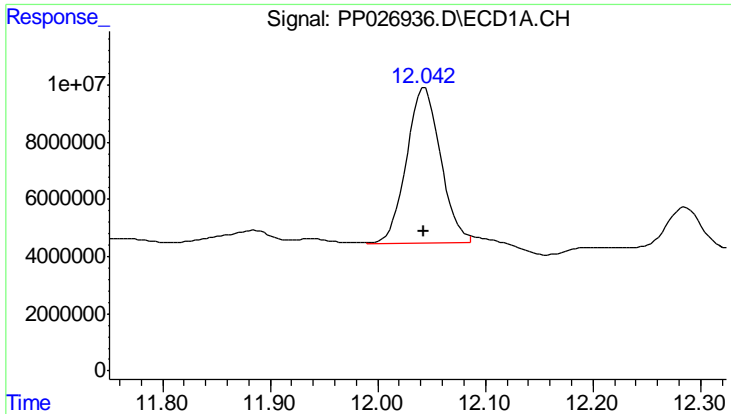
Instrument :
 ECD_P
 Client Sampled :
 PB111669BL

Manual Integrations
APPROVED
 Sohil
 8/2/2018 5:56:12 PM

Integration File signal 1: autoint1.e
 Integration File signal 2: autoint2.e
 Quant Time: Aug 02 05:48:30 2018
 Quant Method : Z:\pestpcbsrv\HPCHEM1\ECD_P\methods\PP073018.M
 Quant Title : 8080.M
 QLast Update : Tue Jul 31 01:31:14 2018
 Response via : Initial Calibration
 Integrator: ChemStation 6890 Scale Mode: Large solvent peaks clipped

Volume Inj. : 2 ul
 Signal #1 Phase : ZB-CLPesticides-1 Signal #2 Phase: ZB-CLPesticides-2
 Signal #1 Info : 30M x 0.32mm x0.5 Signal #2 Info : 30M x 0.32mm x 0.25um





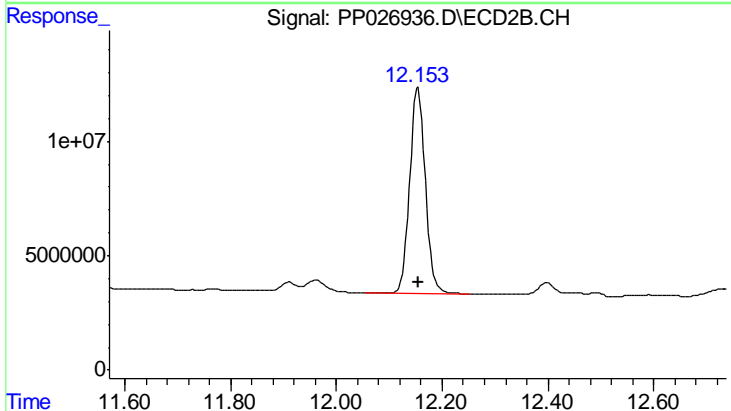
#4 2,4-DCAA

R.T.: 12.042 min
 Delta R.T.: 0.000 min
 Response: 119363773
 Conc: 499.80 ng/ml

Instrument :
 ECD_P
 ClientSampleId :
 PB111669BL

Manual Integrations
 APPROVED

Sohil
 8/2/2018 5:56:12 PM



#4 2,4-DCAA

R.T.: 12.154 min
 Delta R.T.: -0.002 min
 Response: 184317190
 Conc: 455.18 ng/ml