

Data Path : Z:\pestpcbsrv\HPCHEM1\ECD\_P\Data\PP080221\  
 Data File : PP037893.D  
 Signal(s) : Signal #1: ECD1A.CH Signal #2: ECD2B.CH  
 Acq On : 02 Aug 2021 16:55  
 Operator : AJ\MA  
 Sample : AR1660ICC500  
 Misc :  
 ALS Vial : 5 Sample Multiplier: 1

Instrument :  
 ECD\_P  
 ClientSampleId :  
 AR1660ICC500

Integration File signal 1: autoint1.e  
 Integration File signal 2: autoint2.e  
 Quant Time: Aug 03 02:11:47 2021  
 Quant Method : Z:\pestpcbsrv\HPCHEM1\ECD\_P\methods\PP080221.M  
 Quant Title : GC EXTRACTABLES  
 QLast Update : Tue Aug 03 02:03:16 2021  
 Response via : Initial Calibration  
 Integrator: ChemStation 6890 Scale Mode: Small noise peaks clipped

Volume Inj. : 2 µl  
 Signal #1 Phase : ZB-MR2 Signal #2 Phase: ZB-MR2  
 Signal #1 Info : 30Mx0.32mmx 0.50µ Signal #2 Info : 30M x 0.32mm x 0.25µm

Compound	RT#1	RT#2	Resp#1	Resp#2	ng/ml	ng/ml
-----						
System Monitoring Compounds						
1) SA Tetrachlo...	4.896	3.881	2209133	1262931	50.000	50.000
2) SA Decachlor...	10.890	9.156	1318146	1165916	50.000	50.000
Target Compounds						
3) L1 AR-1016-1	6.215	5.128	771241	449505	500.000	500.000
4) L1 AR-1016-2	6.239	5.148	1096996	631417	500.000	500.000
5) L1 AR-1016-3	6.305	5.338	681628	340162	500.000	500.000
6) L1 AR-1016-4	6.412	5.392	563371	255179	500.000	500.000
7) L1 AR-1016-5	6.727	5.619	539490	338675	500.000	500.000
31) L7 AR-1260-1	7.902	6.714	825344	587191	500.000	500.000
32) L7 AR-1260-2	8.169	6.914	962626	707215	500.000	500.000
33) L7 AR-1260-3	8.534	7.067	730618	677984	500.000	500.000
34) L7 AR-1260-4	8.765	7.549	873316	575972	500.000	500.000
35) L7 AR-1260-5	9.089	7.798	1631127	1373443	500.000	500.000

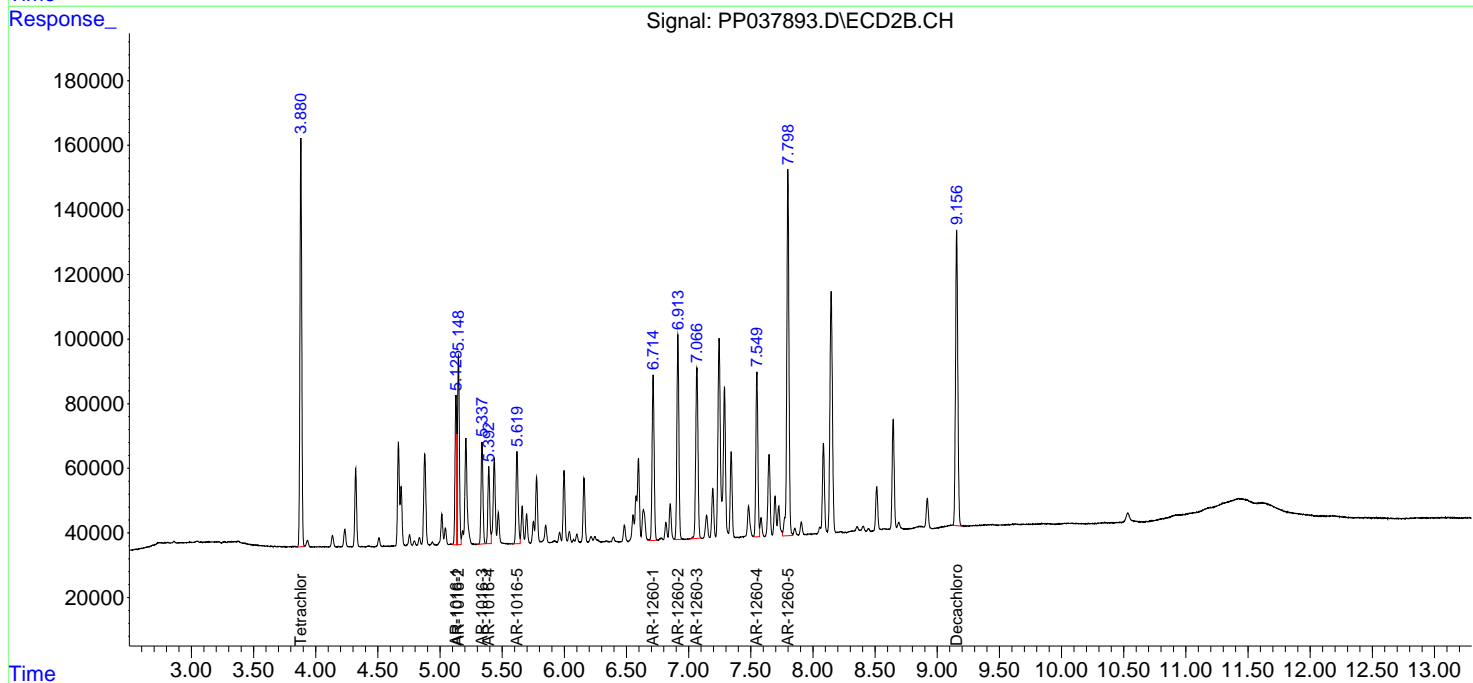
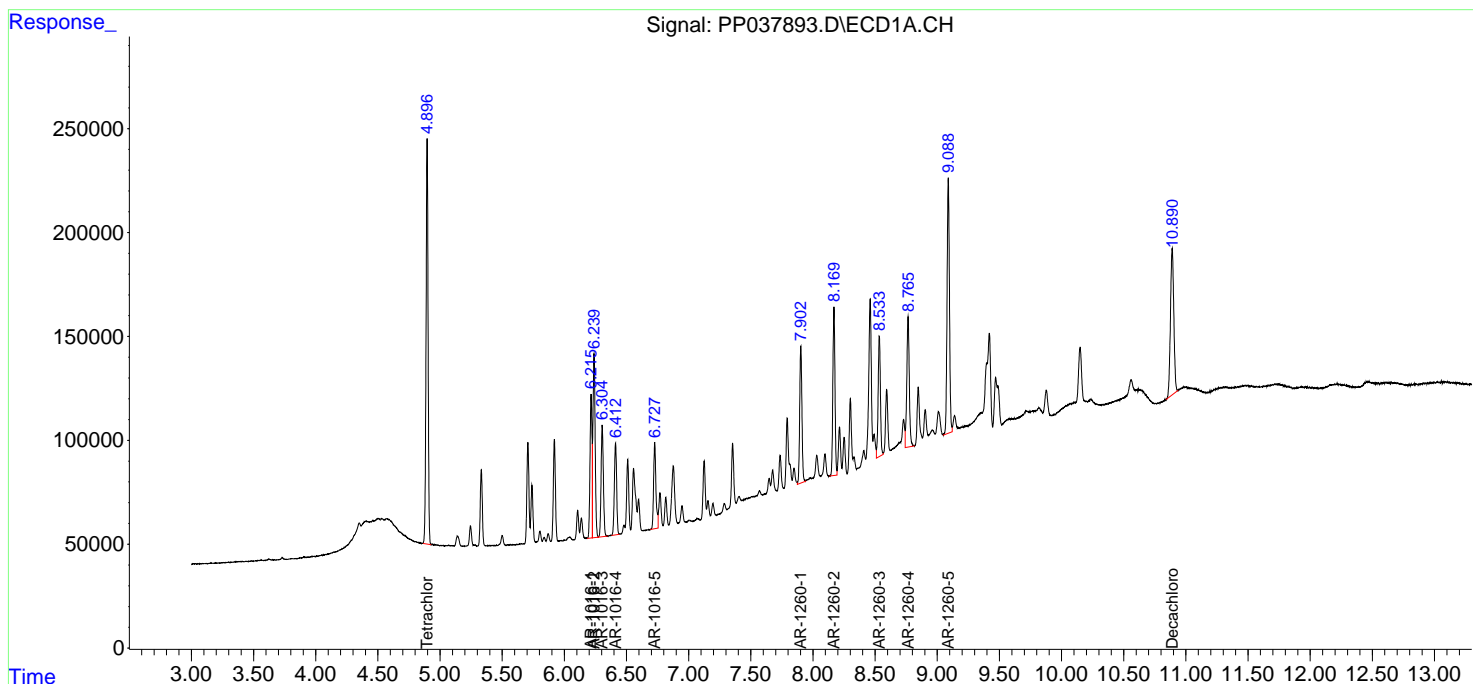
(f)=RT Delta > 1/2 Window (#)=Amounts differ by > 25% (m)=manual int.

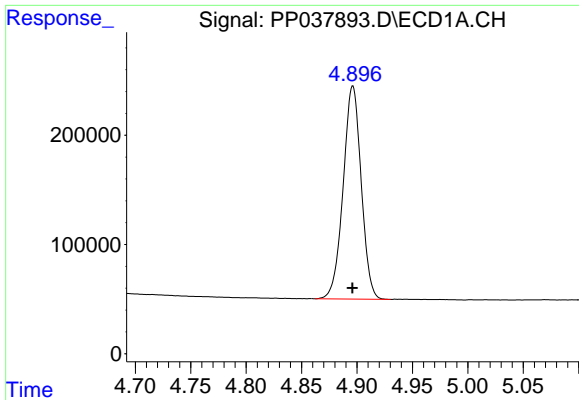
Data Path : Z:\pestpcbsrv\HPCHEM1\ECD\_P\Data\PP080221\  
 Data File : PP037893.D  
 Signal(s) : Signal #1: ECD1A.CH Signal #2: ECD2B.CH  
 Acq On : 02 Aug 2021 16:55  
 Operator : AJ\MA  
 Sample : AR1660ICC500  
 Misc :  
 ALS Vial : 5 Sample Multiplier: 1

Instrument :  
 ECD\_P  
 ClientSampled :  
 AR1660ICC500

Integration File signal 1: autoint1.e  
 Integration File signal 2: autoint2.e  
 Quant Time: Aug 03 02:11:47 2021  
 Quant Method : Z:\pestpcbsrv\HPCHEM1\ECD\_P\methods\PP080221.M  
 Quant Title : GC EXTRACTABLES  
 QLast Update : Tue Aug 03 02:03:16 2021  
 Response via : Initial Calibration  
 Integrator: ChemStation 6890 Scale Mode: Small noise peaks clipped

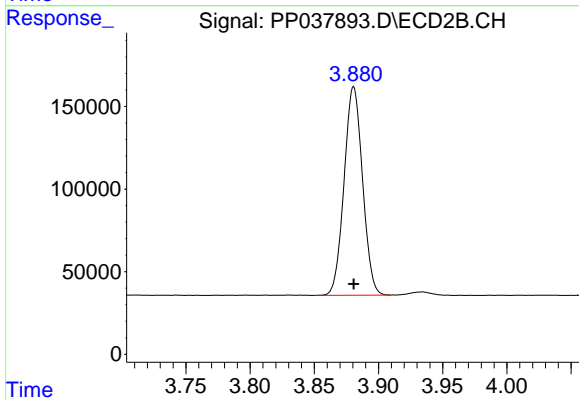
Volume Inj. : 2 µl  
 Signal #1 Phase : ZB-MR1 Signal #2 Phase: ZB-MR2  
 Signal #1 Info : 30Mx0.32mmx 0.50µ Signal #2 Info : 30M x 0.32mm x 0.25µm



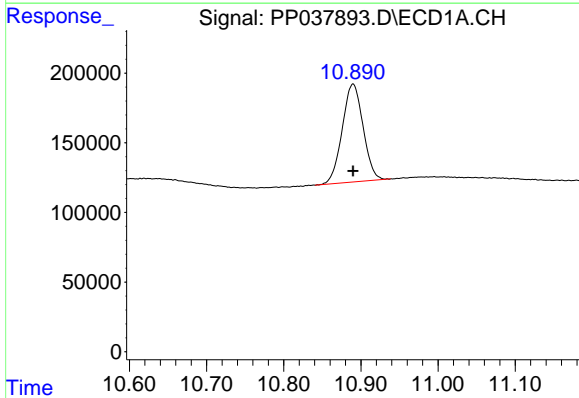


#1 Tetrachloro-m-xylene  
 R.T.: 4.896 min  
 Delta R.T.: 0.000 min  
 Response: 2209133  
 Conc: 50.00 ng/ml

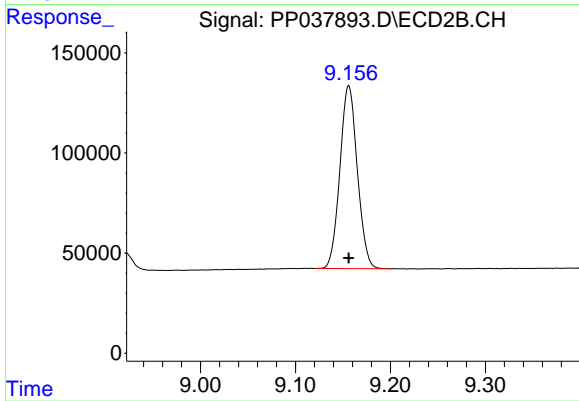
Instrument :  
 ECD\_P  
 ClientSampleId :  
 AR1660ICC500



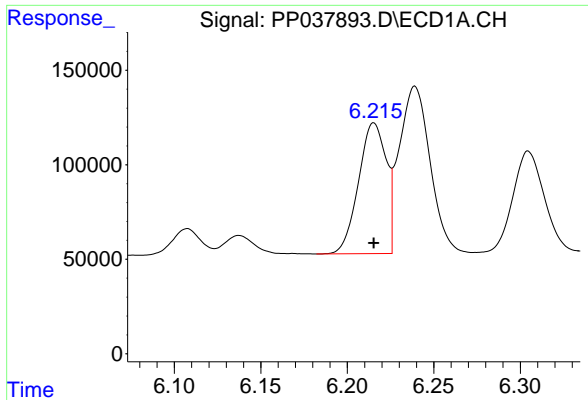
#1 Tetrachloro-m-xylene  
 R.T.: 3.881 min  
 Delta R.T.: 0.000 min  
 Response: 1262931  
 Conc: 50.00 ng/ml



#2 Decachlorobiphenyl  
 R.T.: 10.890 min  
 Delta R.T.: 0.000 min  
 Response: 1318146  
 Conc: 50.00 ng/ml



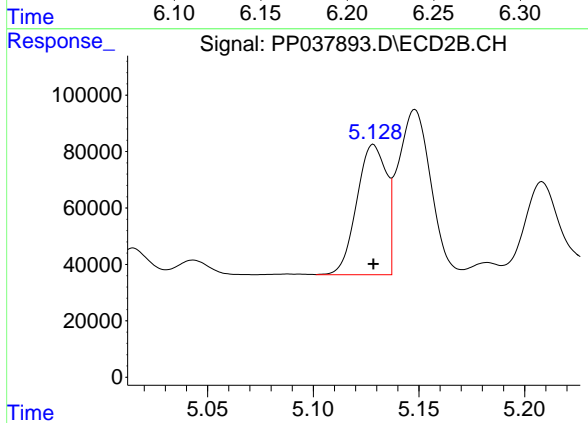
#2 Decachlorobiphenyl  
 R.T.: 9.156 min  
 Delta R.T.: 0.000 min  
 Response: 1165916  
 Conc: 50.00 ng/ml



#3 AR-1016-1

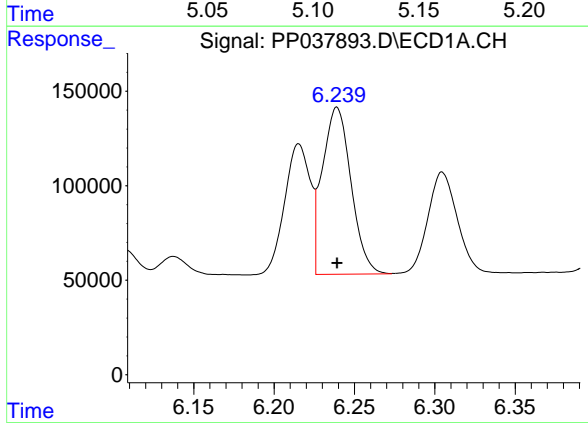
R.T.: 6.215 min  
 Delta R.T.: 0.000 min  
 Response: 771241  
 Conc: 500.00 ng/ml

Instrument :  
 ECD\_P  
 ClientSampled :  
 AR1660ICC500



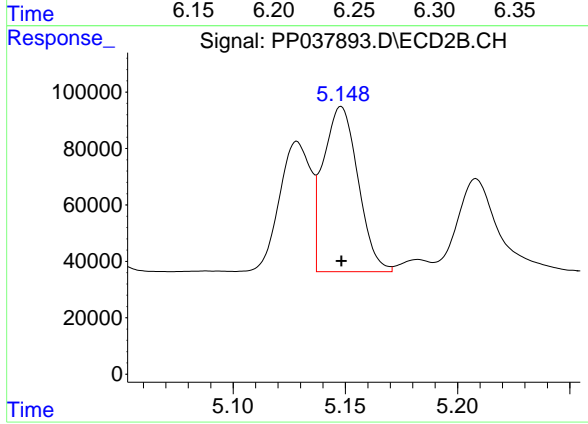
#3 AR-1016-1

R.T.: 5.128 min  
 Delta R.T.: 0.000 min  
 Response: 449505  
 Conc: 500.00 ng/ml



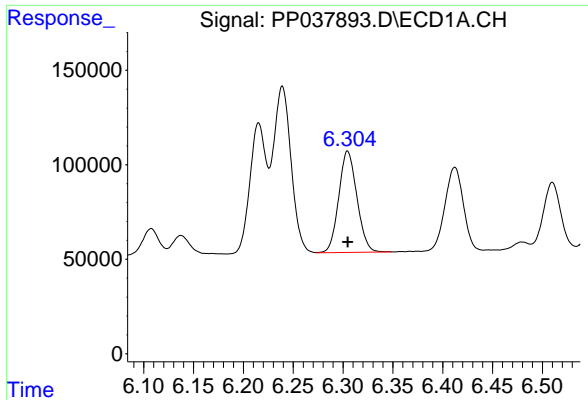
#4 AR-1016-2

R.T.: 6.239 min  
 Delta R.T.: 0.000 min  
 Response: 1096996  
 Conc: 500.00 ng/ml



#4 AR-1016-2

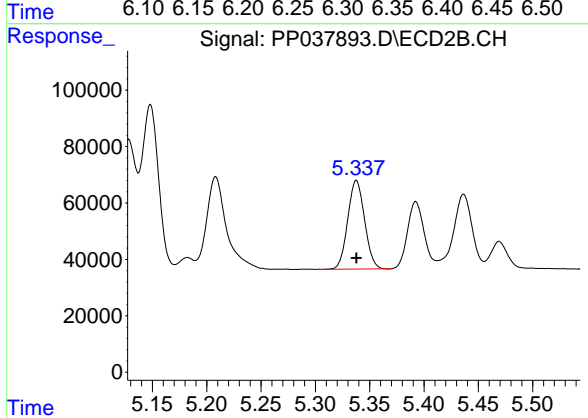
R.T.: 5.148 min  
 Delta R.T.: 0.000 min  
 Response: 631417  
 Conc: 500.00 ng/ml



#5 AR-1016-3

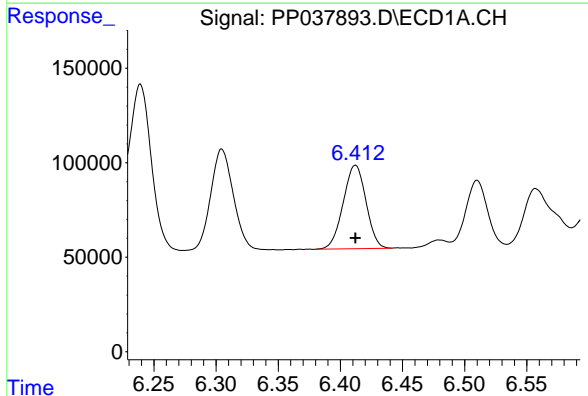
R.T.: 6.305 min  
 Delta R.T.: 0.000 min  
 Response: 681628  
 Conc: 500.00 ng/ml

Instrument :  
 ECD\_P  
 ClientSampleId :  
 AR1660ICC500



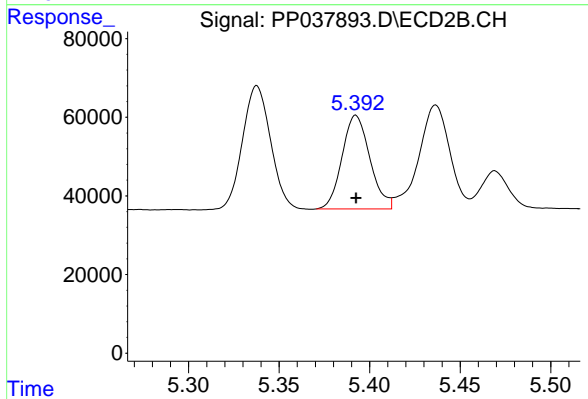
#5 AR-1016-3

R.T.: 5.338 min  
 Delta R.T.: 0.000 min  
 Response: 340162  
 Conc: 500.00 ng/ml



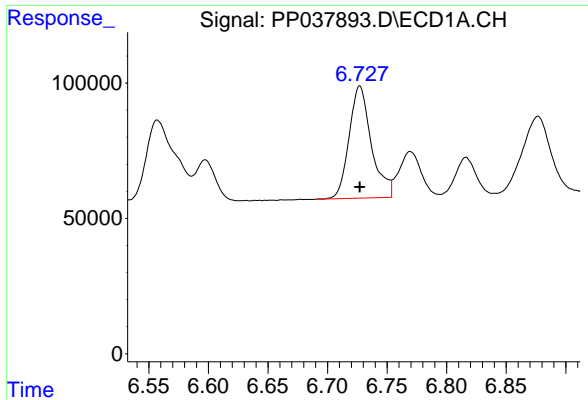
#6 AR-1016-4

R.T.: 6.412 min  
 Delta R.T.: 0.000 min  
 Response: 563371  
 Conc: 500.00 ng/ml



#6 AR-1016-4

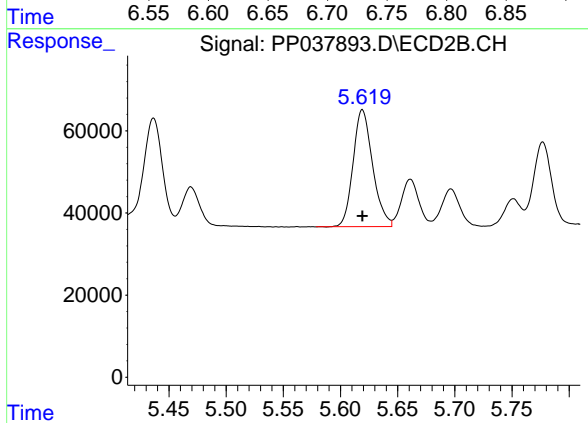
R.T.: 5.392 min  
 Delta R.T.: 0.000 min  
 Response: 255179  
 Conc: 500.00 ng/ml



#7 AR-1016-5

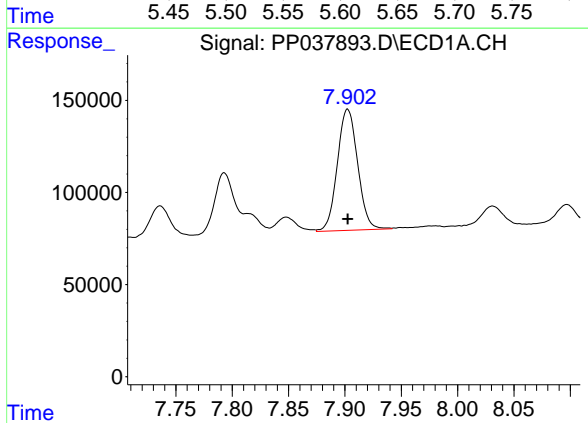
R.T.: 6.727 min  
 Delta R.T.: 0.000 min  
 Response: 539490  
 Conc: 500.00 ng/ml

Instrument :  
 ECD\_P  
 ClientSampleId :  
 AR1660ICC500



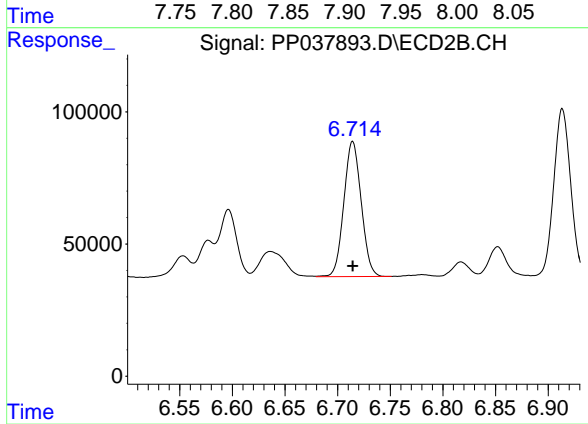
#7 AR-1016-5

R.T.: 5.619 min  
 Delta R.T.: 0.000 min  
 Response: 338675  
 Conc: 500.00 ng/ml



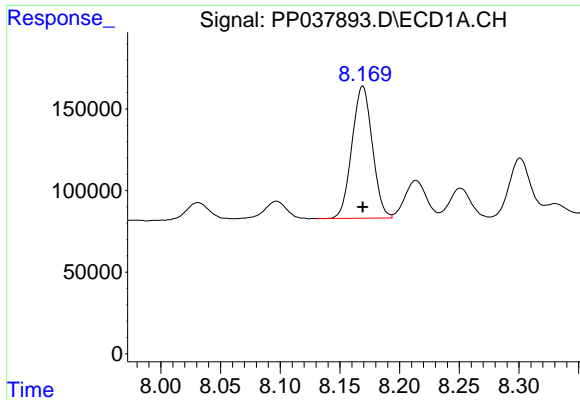
#31 AR-1260-1

R.T.: 7.902 min  
 Delta R.T.: 0.000 min  
 Response: 825344  
 Conc: 500.00 ng/ml



#31 AR-1260-1

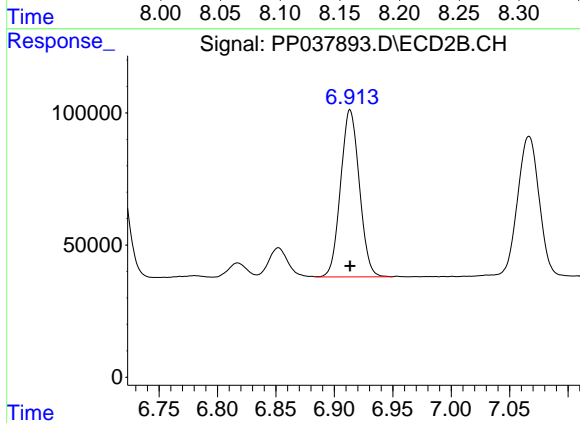
R.T.: 6.714 min  
 Delta R.T.: 0.000 min  
 Response: 587191  
 Conc: 500.00 ng/ml



#32 AR-1260-2

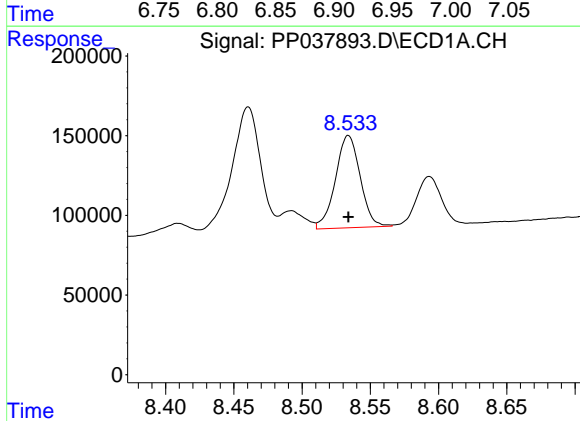
R.T.: 8.169 min  
 Delta R.T.: 0.000 min  
 Response: 962626  
 Conc: 500.00 ng/ml

Instrument :  
 ECD\_P  
 ClientSampleId :  
 AR1660ICC500



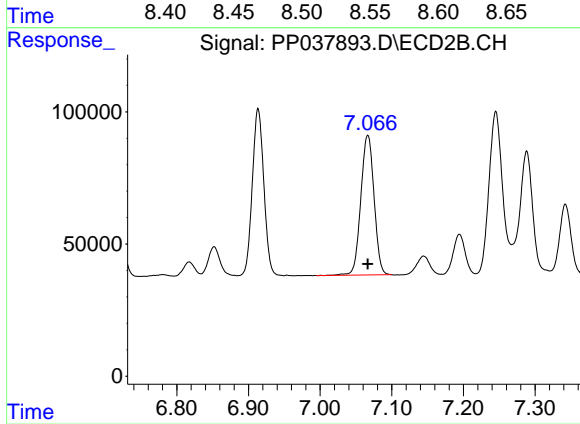
#32 AR-1260-2

R.T.: 6.914 min  
 Delta R.T.: 0.000 min  
 Response: 707215  
 Conc: 500.00 ng/ml



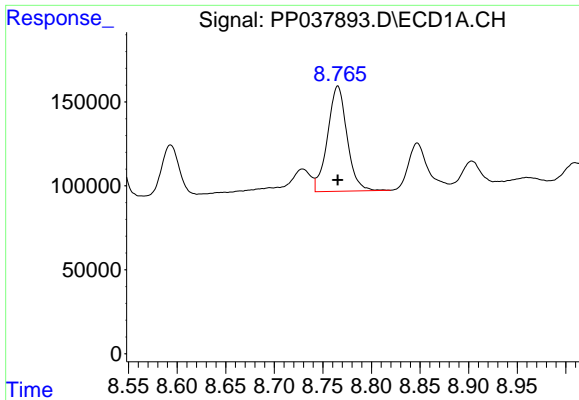
#33 AR-1260-3

R.T.: 8.534 min  
 Delta R.T.: 0.000 min  
 Response: 730618  
 Conc: 500.00 ng/ml



#33 AR-1260-3

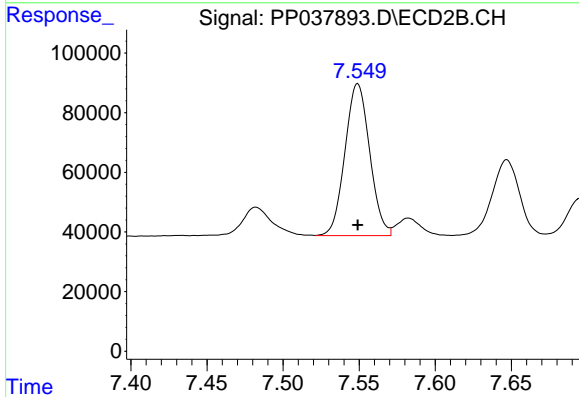
R.T.: 7.067 min  
 Delta R.T.: 0.000 min  
 Response: 677984  
 Conc: 500.00 ng/ml



#34 AR-1260-4

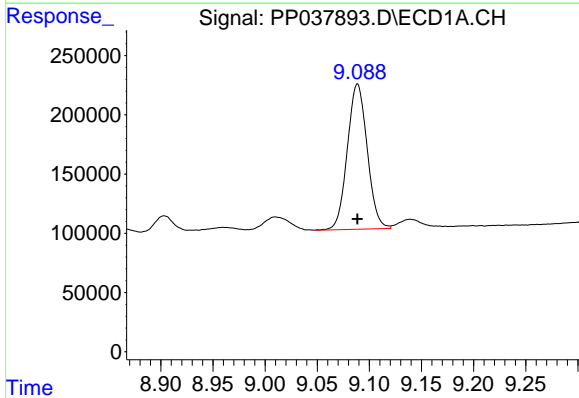
R.T.: 8.765 min  
 Delta R.T.: 0.000 min  
 Response: 873316  
 Conc: 500.00 ng/ml

Instrument :  
 ECD\_P  
 ClientSampleId :  
 AR1660ICC500



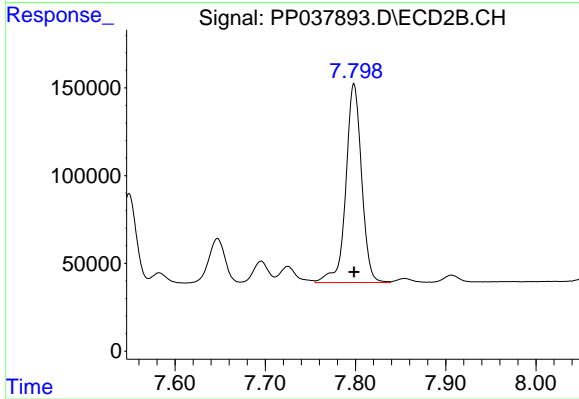
#34 AR-1260-4

R.T.: 7.549 min  
 Delta R.T.: 0.000 min  
 Response: 575972  
 Conc: 500.00 ng/ml



#35 AR-1260-5

R.T.: 9.089 min  
 Delta R.T.: 0.000 min  
 Response: 1631127  
 Conc: 500.00 ng/ml



#35 AR-1260-5

R.T.: 7.798 min  
 Delta R.T.: 0.000 min  
 Response: 1373443  
 Conc: 500.00 ng/ml