

Data Path : Z:\pestpcbsrv\HPCHEM1\ECD_P\Data\PP080221\
 Data File : PP037898.D
 Signal(s) : Signal #1: ECD1A.CH Signal #2: ECD2B.CH
 Acq On : 02 Aug 2021 18:20
 Operator : AJ\MA
 Sample : AR1242ICC1000
 Misc :
 ALS Vial : 10 Sample Multiplier: 1

Instrument :
 ECD_P
 ClientSampleId :
 AR1242ICC1000

Integration File signal 1: autoint1.e
 Integration File signal 2: autoint2.e
 Quant Time: Aug 03 02:33:45 2021
 Quant Method : Z:\pestpcbsrv\HPCHEM1\ECD_P\methods\PP080221.M
 Quant Title : GC EXTRACTABLES
 QLast Update : Tue Aug 03 02:30:29 2021
 Response via : Initial Calibration
 Integrator: ChemStation 6890 Scale Mode: Small noise peaks clipped

Volume Inj. : 2 µl
 Signal #1 Phase : ZB-MR1 Signal #2 Phase: ZB-MR2
 Signal #1 Info : 30Mx0.32mmx 0.50µ Signal #2 Info : 30M x 0.32mm x 0.25µm

Compound	RT#1	RT#2	Resp#1	Resp#2	ng/ml	ng/ml

System Monitoring Compounds						
1) SA Tetrachlo...	4.897	3.881	4474849	2570499	98.077	98.959
2) SA Decachlor...	10.890	9.156	2485421	2275867	97.576	96.657
Target Compounds						
16) L4 AR-1242-1	6.215	5.129	1116670	644142	959.715	959.627
17) L4 AR-1242-2	6.239	5.148	1589698	911327	960.571	969.555
18) L4 AR-1242-3	6.304	5.338	992164	491916	955.604	971.183
19) L4 AR-1242-4	6.412	5.436	828516	447189	961.760	947.305
20) L4 AR-1242-5	7.195	5.998	834283	581672	973.835	964.257

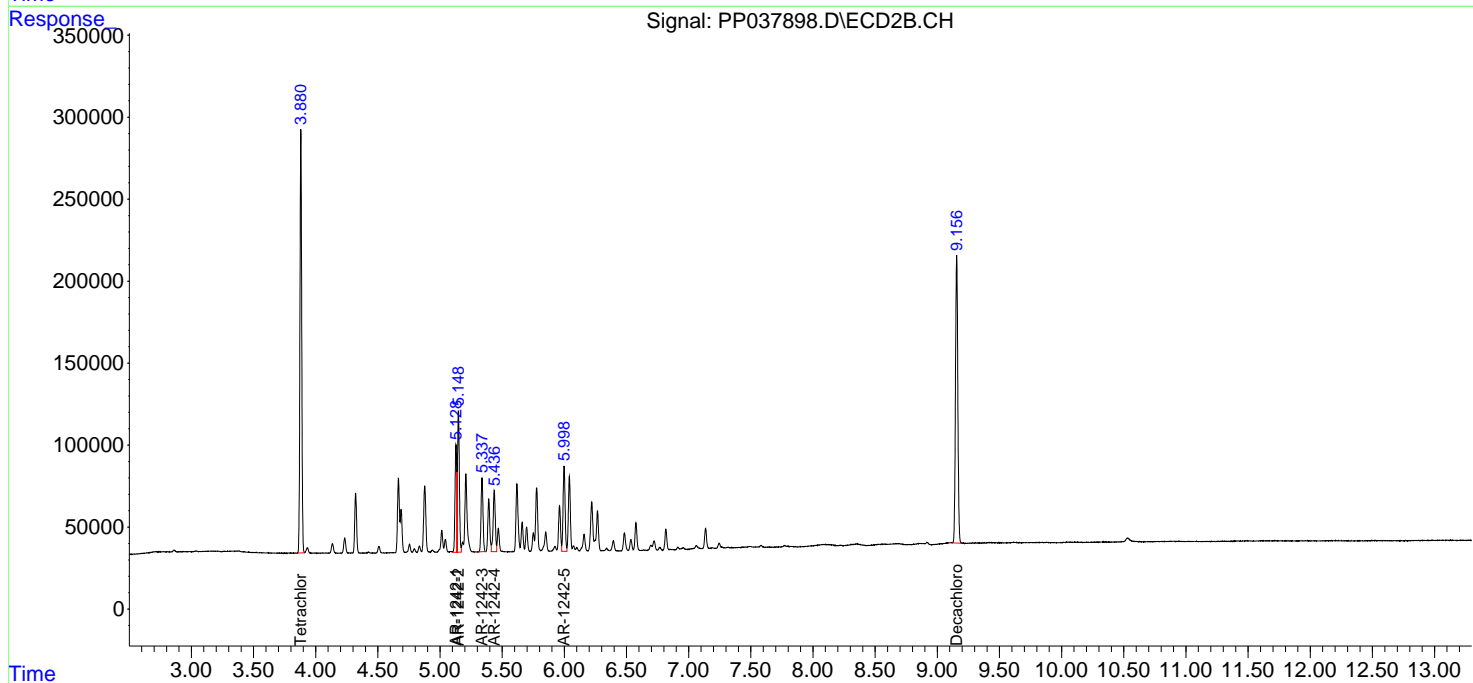
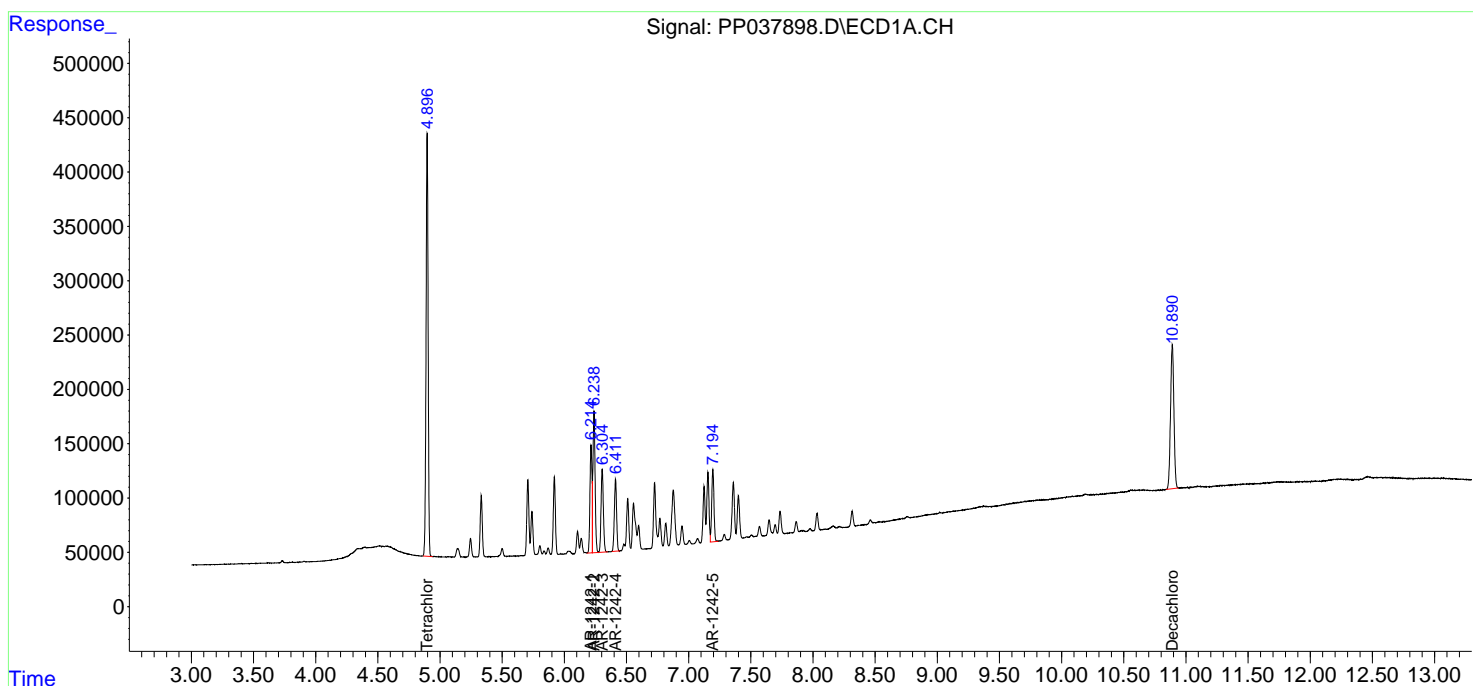
(f)=RT Delta > 1/2 Window (#)=Amounts differ by > 25% (m)=manual int.

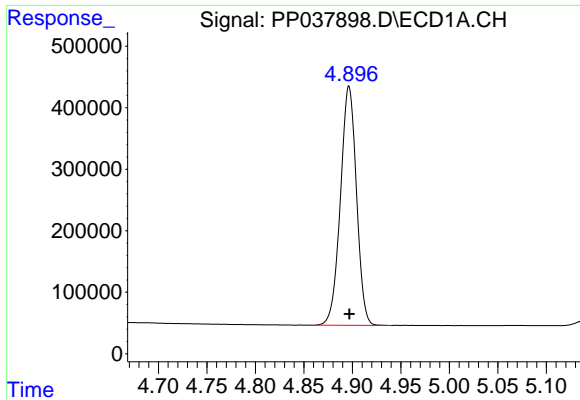
Data Path : Z:\pestpcbsrv\HPCHEM1\ECD_P\Data\PP080221\
 Data File : PP037898.D
 Signal(s) : Signal #1: ECD1A.CH Signal #2: ECD2B.CH
 Acq On : 02 Aug 2021 18:20
 Operator : AJ\MA
 Sample : AR1242ICC1000
 Misc :
 ALS Vial : 10 Sample Multiplier: 1

Instrument :
 ECD_P
 ClientSampleId :
 AR1242ICC1000

Integration File signal 1: autoint1.e
 Integration File signal 2: autoint2.e
 Quant Time: Aug 03 02:33:45 2021
 Quant Method : Z:\pestpcbsrv\HPCHEM1\ECD_P\methods\PP080221.M
 Quant Title : GC EXTRACTABLES
 QLast Update : Tue Aug 03 02:30:29 2021
 Response via : Initial Calibration
 Integrator: ChemStation 6890 Scale Mode: Small noise peaks clipped

Volume Inj. : 2 µl
 Signal #1 Phase : ZB-MR1 Signal #2 Phase: ZB-MR2
 Signal #1 Info : 30Mx0.32mmx 0.50µ Signal #2 Info : 30M x 0.32mm x 0.25µm





#1 Tetrachloro-m-xylene

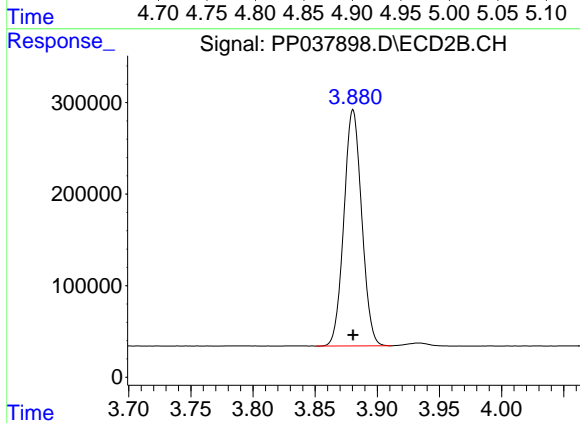
R.T.: 4.897 min

Delta R.T.: 0.000 min

Response: 4474849

Conc: 98.08 ng/ml

Instrument :
ECD_P
ClientSampleId :
AR1242ICC1000



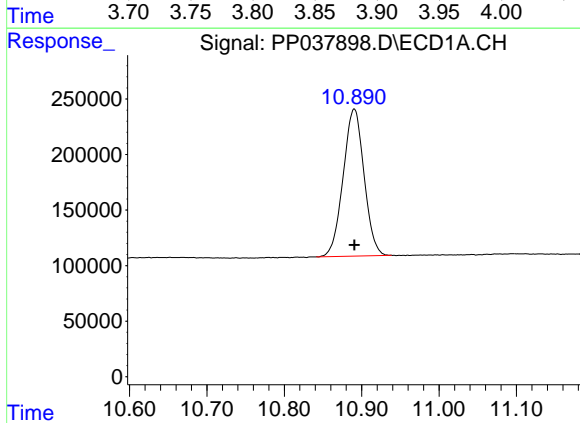
#1 Tetrachloro-m-xylene

R.T.: 3.881 min

Delta R.T.: 0.000 min

Response: 2570499

Conc: 98.96 ng/ml



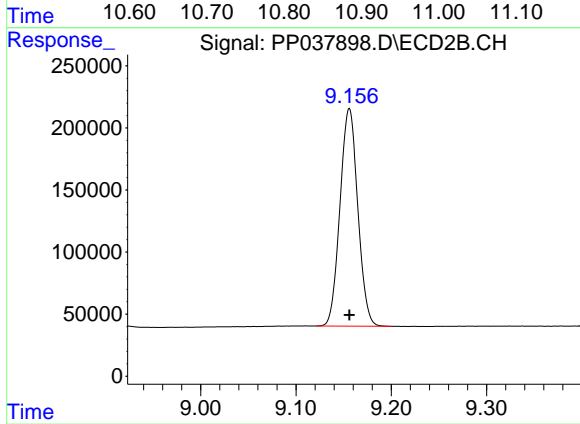
#2 Decachlorobiphenyl

R.T.: 10.890 min

Delta R.T.: 0.000 min

Response: 2485421

Conc: 97.58 ng/ml



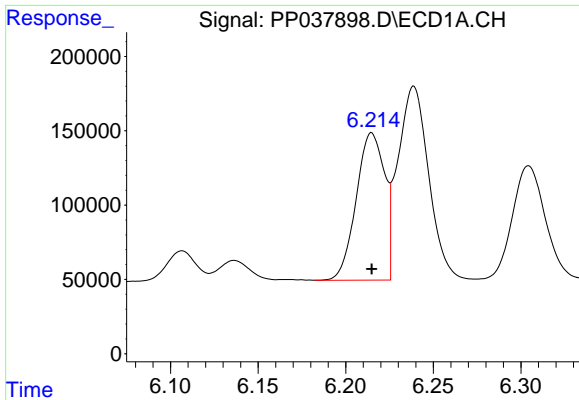
#2 Decachlorobiphenyl

R.T.: 9.156 min

Delta R.T.: 0.000 min

Response: 2275867

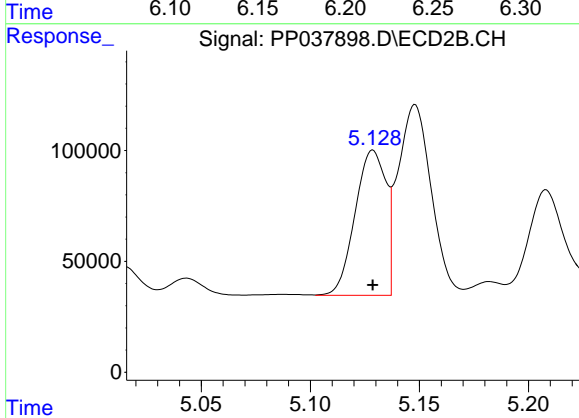
Conc: 96.66 ng/ml



#16 AR-1242-1

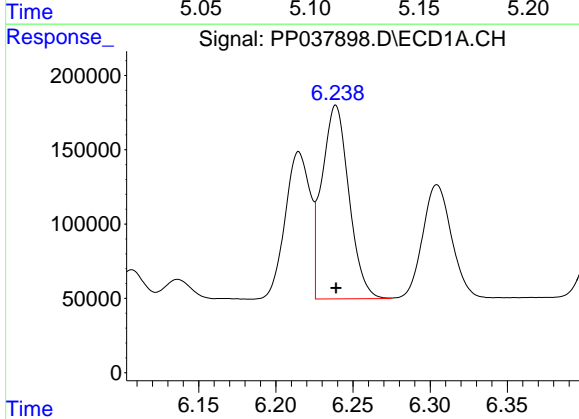
R.T.: 6.215 min
 Delta R.T.: 0.000 min
 Response: 1116670
 Conc: 959.71 ng/ml

Instrument :
 ECD_P
 ClientSampleId :
 AR1242ICC1000



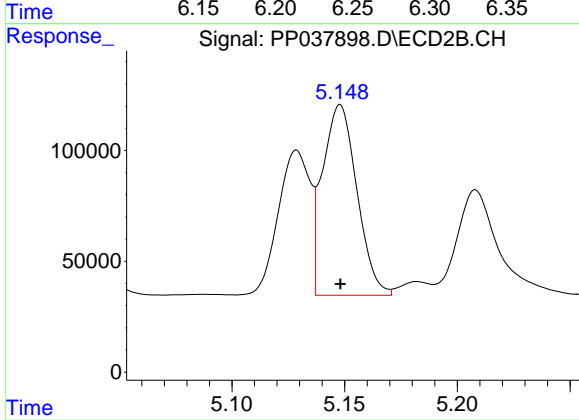
#16 AR-1242-1

R.T.: 5.129 min
 Delta R.T.: 0.000 min
 Response: 644142
 Conc: 959.63 ng/ml



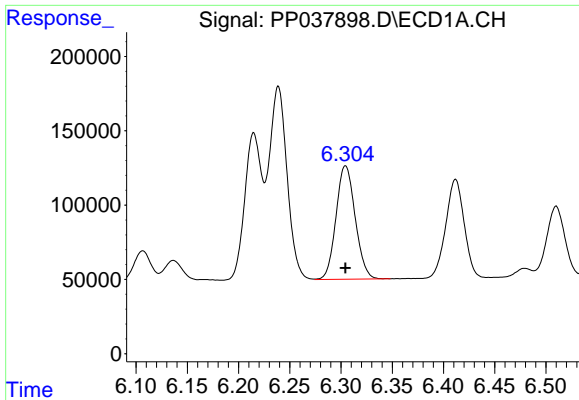
#17 AR-1242-2

R.T.: 6.239 min
 Delta R.T.: 0.000 min
 Response: 1589698
 Conc: 960.57 ng/ml



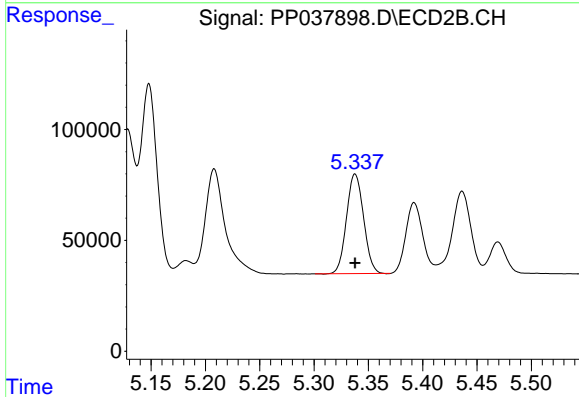
#17 AR-1242-2

R.T.: 5.148 min
 Delta R.T.: 0.000 min
 Response: 911327
 Conc: 969.55 ng/ml

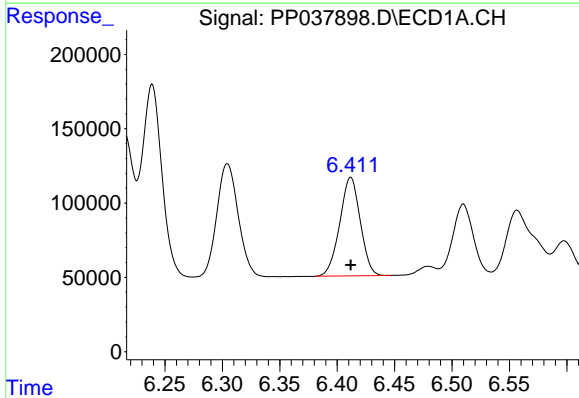


#18 AR-1242-3
 R.T.: 6.304 min
 Delta R.T.: 0.000 min
 Response: 992164
 Conc: 955.60 ng/ml

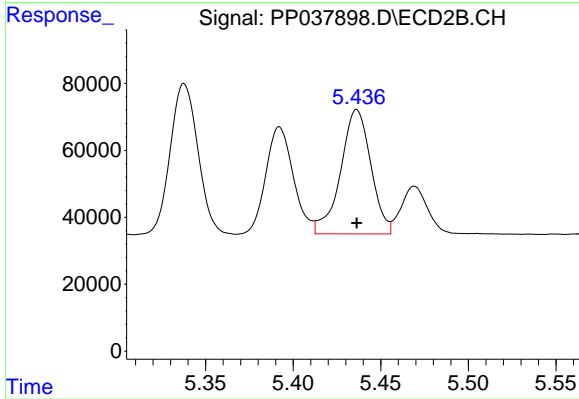
Instrument :
 ECD_P
ClientSampled :
 AR1242ICC1000



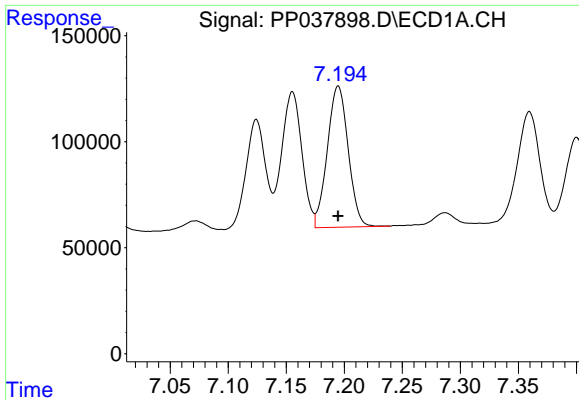
#18 AR-1242-3
 R.T.: 5.338 min
 Delta R.T.: 0.000 min
 Response: 491916
 Conc: 971.18 ng/ml



#19 AR-1242-4
 R.T.: 6.412 min
 Delta R.T.: 0.000 min
 Response: 828516
 Conc: 961.76 ng/ml



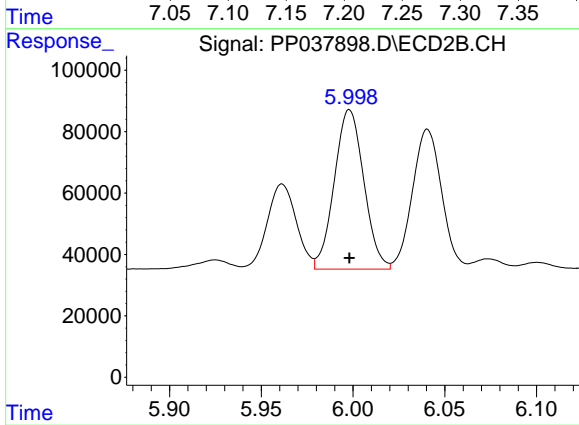
#19 AR-1242-4
 R.T.: 5.436 min
 Delta R.T.: 0.000 min
 Response: 447189
 Conc: 947.30 ng/ml



#20 AR-1242-5

R.T.: 7.195 min
Delta R.T.: 0.000 min
Response: 834283
Conc: 973.84 ng/ml

Instrument :
ECD_P
ClientSampled :
AR1242ICC1000



#20 AR-1242-5

R.T.: 5.998 min
Delta R.T.: 0.000 min
Response: 581672
Conc: 964.26 ng/ml