

Data Path : Z:\pestpcbsrv\HPCHEM1\ECD_P\Data\PP080221\
 Data File : PP037901.D
 Signal(s) : Signal #1: ECD1A.CH Signal #2: ECD2B.CH
 Acq On : 02 Aug 2021 19:11
 Operator : AJ\MA
 Sample : AR1242ICC250
 Misc :
 ALS Vial : 13 Sample Multiplier: 1

Instrument :
 ECD_P
 ClientSampleId :
 AR1242ICC250

Integration File signal 1: autoint1.e
 Integration File signal 2: autoint2.e
 Quant Time: Aug 03 02:38:02 2021
 Quant Method : Z:\pestpcbsrv\HPCHEM1\ECD_P\methods\PP080221.M
 Quant Title : GC EXTRACTABLES
 QLast Update : Tue Aug 03 02:30:29 2021
 Response via : Initial Calibration
 Integrator: ChemStation 6890 Scale Mode: Small noise peaks clipped

Volume Inj. : 2 µl
 Signal #1 Phase : ZB-MR1 Signal #2 Phase: ZB-MR2
 Signal #1 Info : 30Mx0.32mmx 0.50µ Signal #2 Info : 30M x 0.32mm x 0.25µm

Compound	RT#1	RT#2	Resp#1	Resp#2	ng/ml	ng/ml

System Monitoring Compounds						
1) SA Tetrachlo...	4.895	3.881	1188872	655310	25.782	25.139
2) SA Decachlor...	10.889	9.156	650662	634729	25.355	26.437
Target Compounds						
16) L4 AR-1242-1	6.214	5.129	320734	181293	268.527	265.030
17) L4 AR-1242-2	6.239	5.148	452837	247781	267.573	260.383
18) L4 AR-1242-3	6.303	5.338	289540	132049	270.966	257.306
19) L4 AR-1242-4	6.411	5.436	233679	128769	265.685	266.923
20) L4 AR-1242-5	7.194	5.998	228895	159208	262.045	259.674

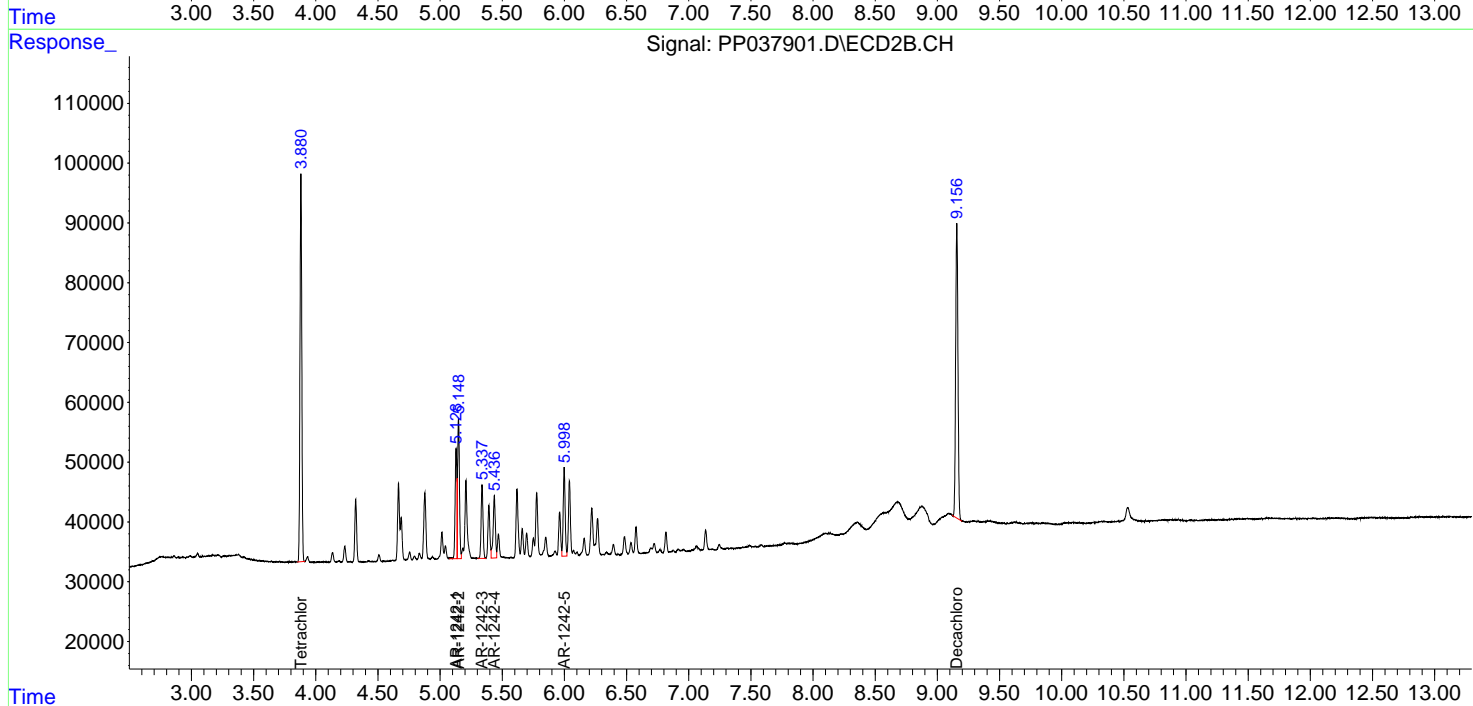
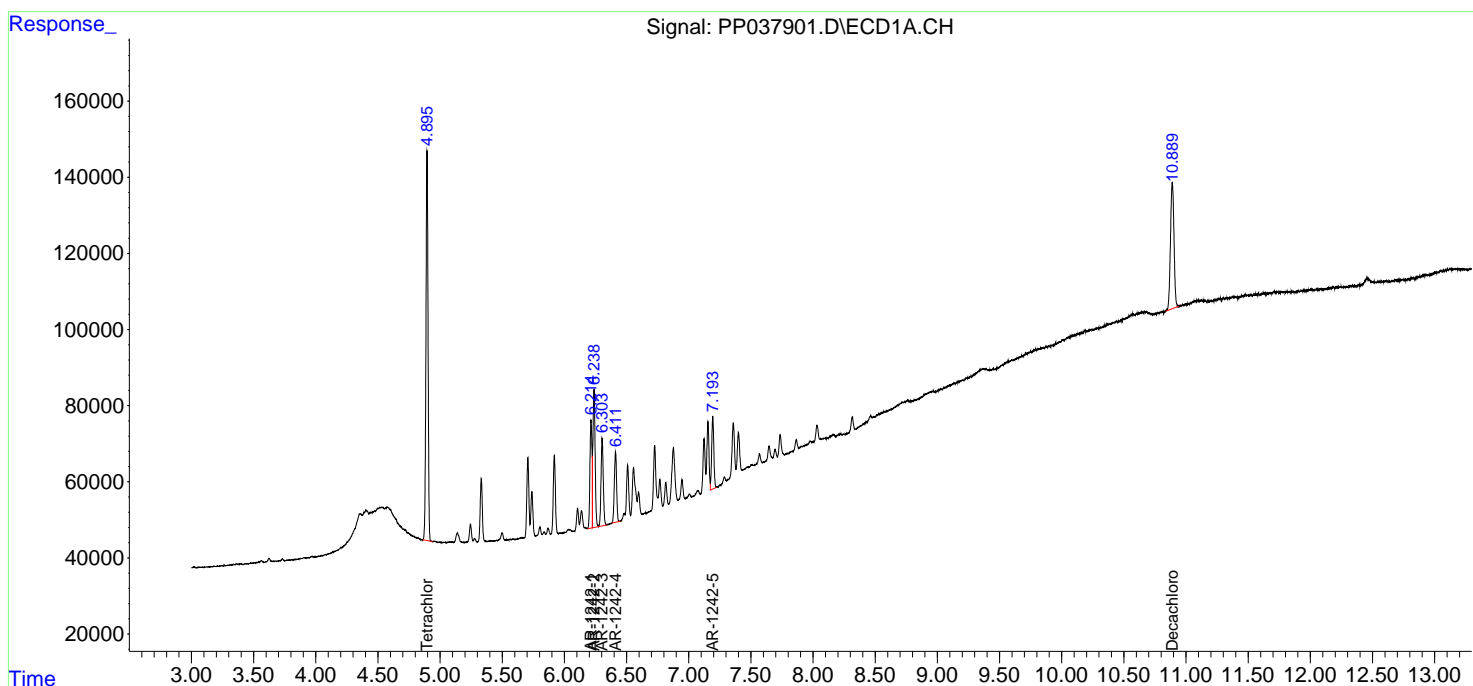
(f)=RT Delta > 1/2 Window (#)=Amounts differ by > 25% (m)=manual int.

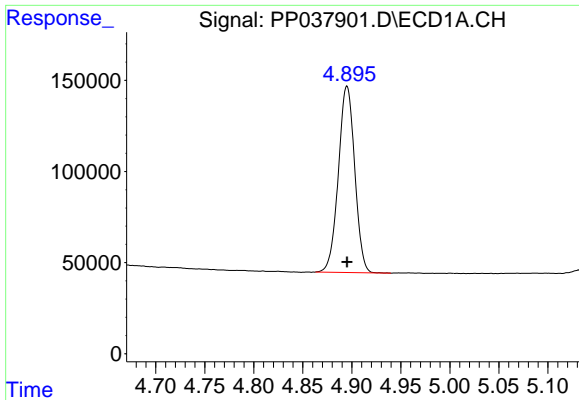
Data Path : Z:\pestpcbsrv\HPCHEM1\ECD_P\Data\PP080221\
 Data File : PP037901.D
 Signal(s) : Signal #1: ECD1A.CH Signal #2: ECD2B.CH
 Acq On : 02 Aug 2021 19:11
 Operator : AJ\MA
 Sample : AR1242ICC250
 Misc :
 ALS Vial : 13 Sample Multiplier: 1

Instrument :
 ECD_P
 ClientSampled :
 AR1242ICC250

Integration File signal 1: autoint1.e
 Integration File signal 2: autoint2.e
 Quant Time: Aug 03 02:38:02 2021
 Quant Method : Z:\pestpcbsrv\HPCHEM1\ECD_P\methods\PP080221.M
 Quant Title : GC EXTRACTABLES
 QLast Update : Tue Aug 03 02:30:29 2021
 Response via : Initial Calibration
 Integrator: ChemStation 6890 Scale Mode: Small noise peaks clipped

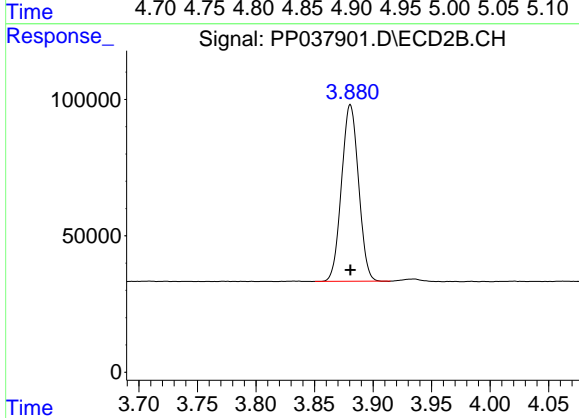
Volume Inj. : 2 µl
 Signal #1 Phase : ZB-MR1 Signal #2 Phase: ZB-MR2
 Signal #1 Info : 30Mx0.32mmx 0.50µ Signal #2 Info : 30M x 0.32mm x 0.25µm



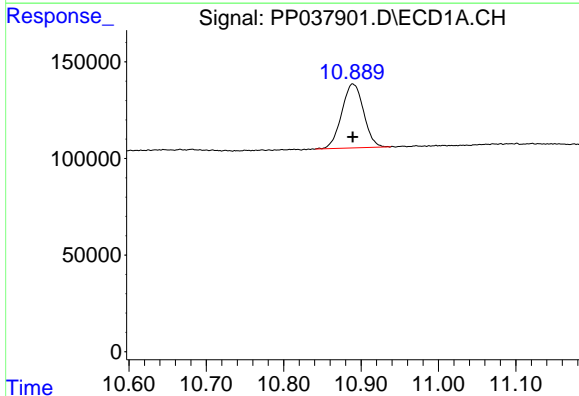


#1 Tetrachloro-m-xylene
 R.T.: 4.895 min
 Delta R.T.: 0.000 min
 Response: 1188872
 Conc: 25.78 ng/ml

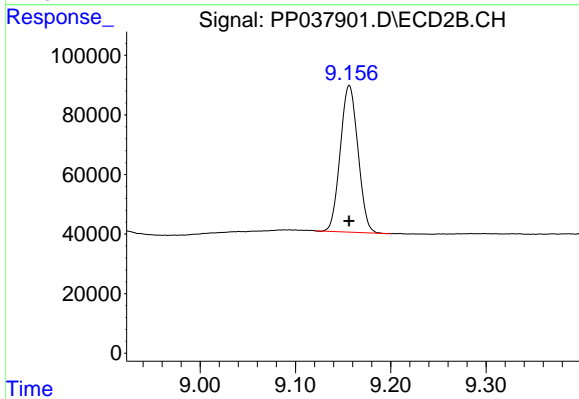
Instrument :
 ECD_P
 ClientSampleId :
 AR1242ICC250



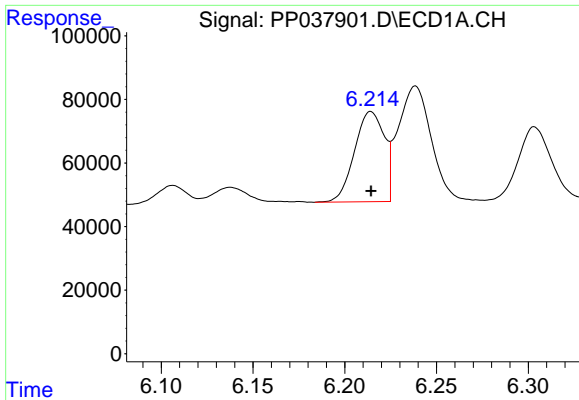
#1 Tetrachloro-m-xylene
 R.T.: 3.881 min
 Delta R.T.: 0.000 min
 Response: 655310
 Conc: 25.14 ng/ml



#2 Decachlorobiphenyl
 R.T.: 10.889 min
 Delta R.T.: 0.000 min
 Response: 650662
 Conc: 25.36 ng/ml



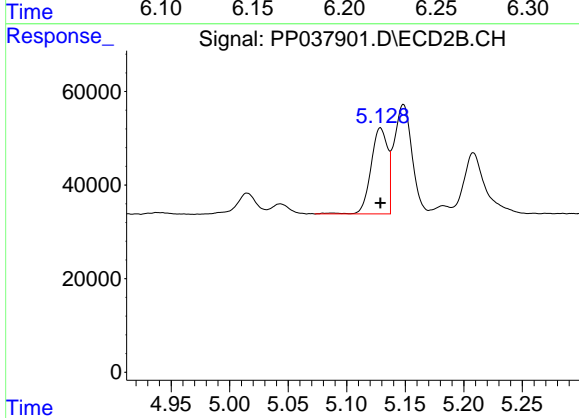
#2 Decachlorobiphenyl
 R.T.: 9.156 min
 Delta R.T.: 0.000 min
 Response: 634729
 Conc: 26.44 ng/ml



#16 AR-1242-1

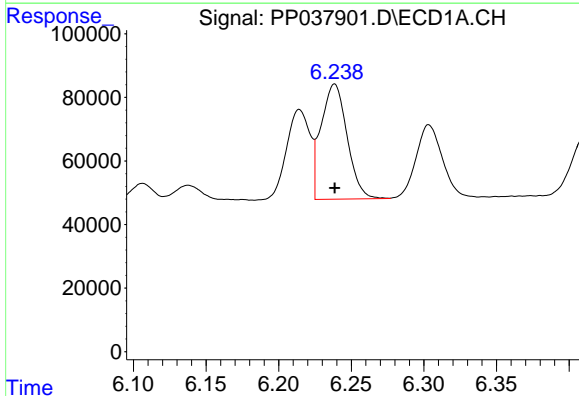
R.T.: 6.214 min
 Delta R.T.: 0.000 min
 Response: 320734
 Conc: 268.53 ng/ml

Instrument :
 ECD_P
 ClientSampleId :
 AR1242ICC250



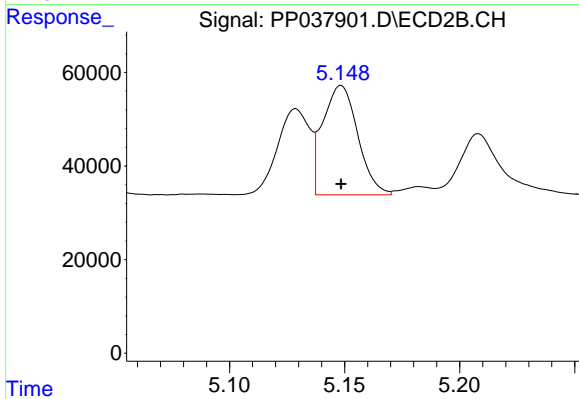
#16 AR-1242-1

R.T.: 5.129 min
 Delta R.T.: 0.000 min
 Response: 181293
 Conc: 265.03 ng/ml



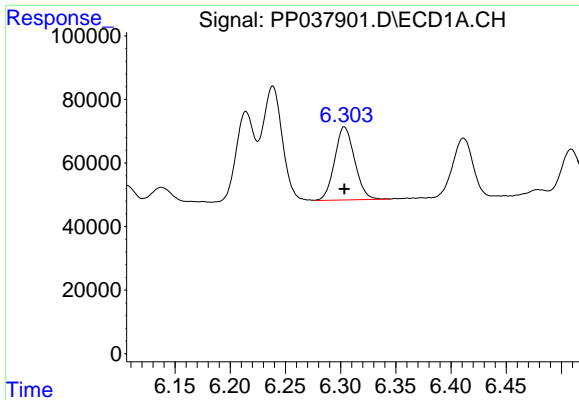
#17 AR-1242-2

R.T.: 6.239 min
 Delta R.T.: 0.000 min
 Response: 452837
 Conc: 267.57 ng/ml



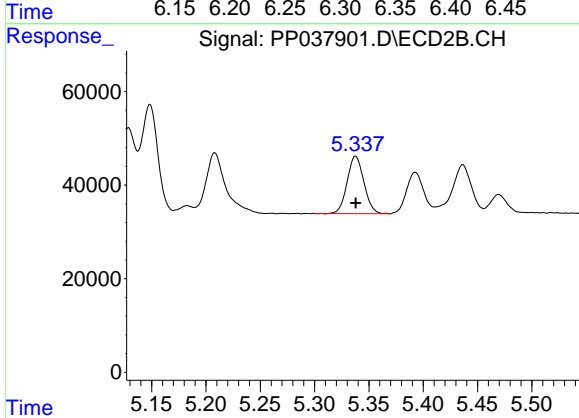
#17 AR-1242-2

R.T.: 5.148 min
 Delta R.T.: 0.000 min
 Response: 247781
 Conc: 260.38 ng/ml

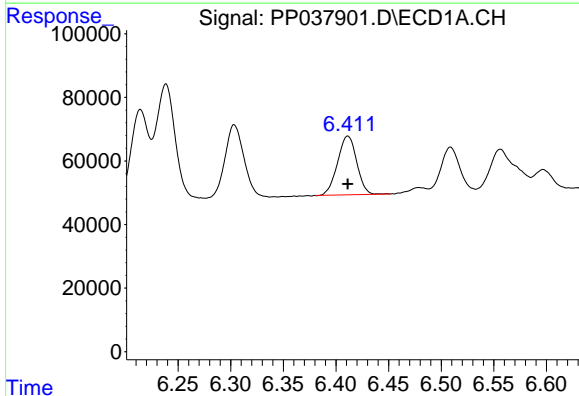


#18 AR-1242-3
 R.T.: 6.303 min
 Delta R.T.: 0.000 min
 Response: 289540
 Conc: 270.97 ng/ml

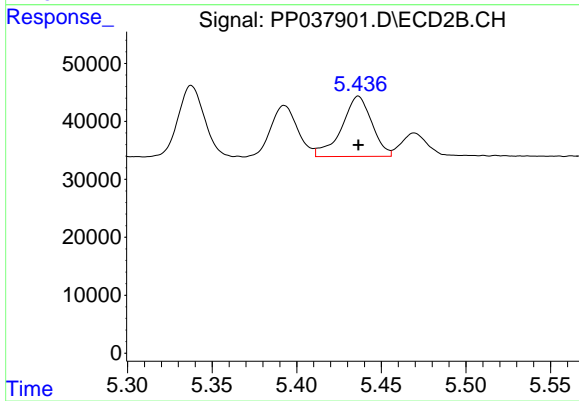
Instrument :
 ECD_P
 ClientSampleId :
 AR1242ICC250



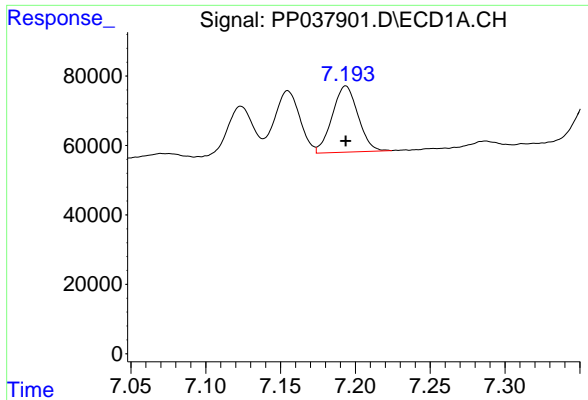
#18 AR-1242-3
 R.T.: 5.338 min
 Delta R.T.: 0.000 min
 Response: 132049
 Conc: 257.31 ng/ml



#19 AR-1242-4
 R.T.: 6.411 min
 Delta R.T.: 0.000 min
 Response: 233679
 Conc: 265.69 ng/ml



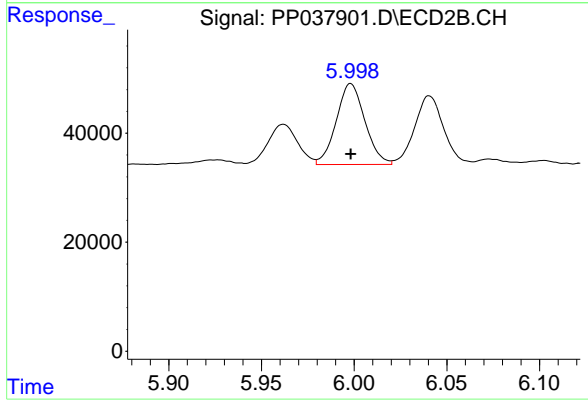
#19 AR-1242-4
 R.T.: 5.436 min
 Delta R.T.: 0.000 min
 Response: 128769
 Conc: 266.92 ng/ml



#20 AR-1242-5

R.T.: 7.194 min
Delta R.T.: 0.000 min
Response: 228895
Conc: 262.04 ng/ml

Instrument :
ECD_P
ClientSampleId :
AR1242ICC250



#20 AR-1242-5

R.T.: 5.998 min
Delta R.T.: 0.000 min
Response: 159208
Conc: 259.67 ng/ml