

Data Path : Z:\pestpcbsrv\HPCHEM1\ECD_P\Data\PP080321\
 Data File : PP037971.D
 Signal(s) : Signal #1: ECD1A.CH Signal #2: ECD2B.CH
 Acq On : 04 Aug 2021 00:17
 Operator : AJ\MA
 Sample : AR1660CCC500
 Misc :
 ALS Vial : 3 Sample Multiplier: 1

Instrument :
 ECD_P
ClientSampleId :
 AR1660CCC500

Manual Integrations
APPROVED

mohammad
 8/4/2021 11:55:34 AM

Integration File signal 1: autoint1.e
 Integration File signal 2: autoint2.e
 Quant Time: Aug 04 03:15:14 2021
 Quant Method : Z:\pestpcbsrv\HPCHEM1\ECD_P\methods\PP080221.M
 Quant Title : GC EXTRACTABLES
 QLast Update : Tue Aug 03 05:09:57 2021
 Response via : Initial Calibration
 Integrator: ChemStation 6890 Scale Mode: Small noise peaks clipped

Volume Inj. : 2 µl
 Signal #1 Phase : ZB-MR2 Signal #2 Phase: ZB-MR2
 Signal #1 Info : 30Mx0.32mmx 0.50µ Signal #2 Info : 30M x 0.32mm x 0.25µm

Compound	RT#1	RT#2	Resp#1	Resp#2	ng/ml	ng/ml

System Monitoring Compounds						
1) SA Tetrachlo...	4.895	3.881	2504639	1415204	56.210	56.372
2) SA Decachlor...	10.886	9.152	1238791	1327797	47.286	56.702
Target Compounds						
3) L1 AR-1016-1	6.213	5.128	845328	508845	535.247	557.442
4) L1 AR-1016-2	6.237	5.147	1199110	711123	535.340	563.360
5) L1 AR-1016-3	6.302	5.337	751400	389861	542.927	581.666
6) L1 AR-1016-4	6.409	5.391	616115	292264	537.050	574.379
7) L1 AR-1016-5	6.723	5.618	583959	385359	534.841	564.143
31) L7 AR-1260-1	7.899	6.711	773552	669292	467.692m	568.767m
32) L7 AR-1260-2	8.166	6.911	902244	804052	455.858	562.754
33) L7 AR-1260-3	8.530	7.063	649647	765288	443.748	541.785
34) L7 AR-1260-4	8.762	7.546	754442	650961	435.244	574.447 #
35) L7 AR-1260-5	9.085	7.795	1443624	1543302	440.921	556.289 #

(f)=RT Delta > 1/2 Window (#)=Amounts differ by > 25% (m)=manual int.

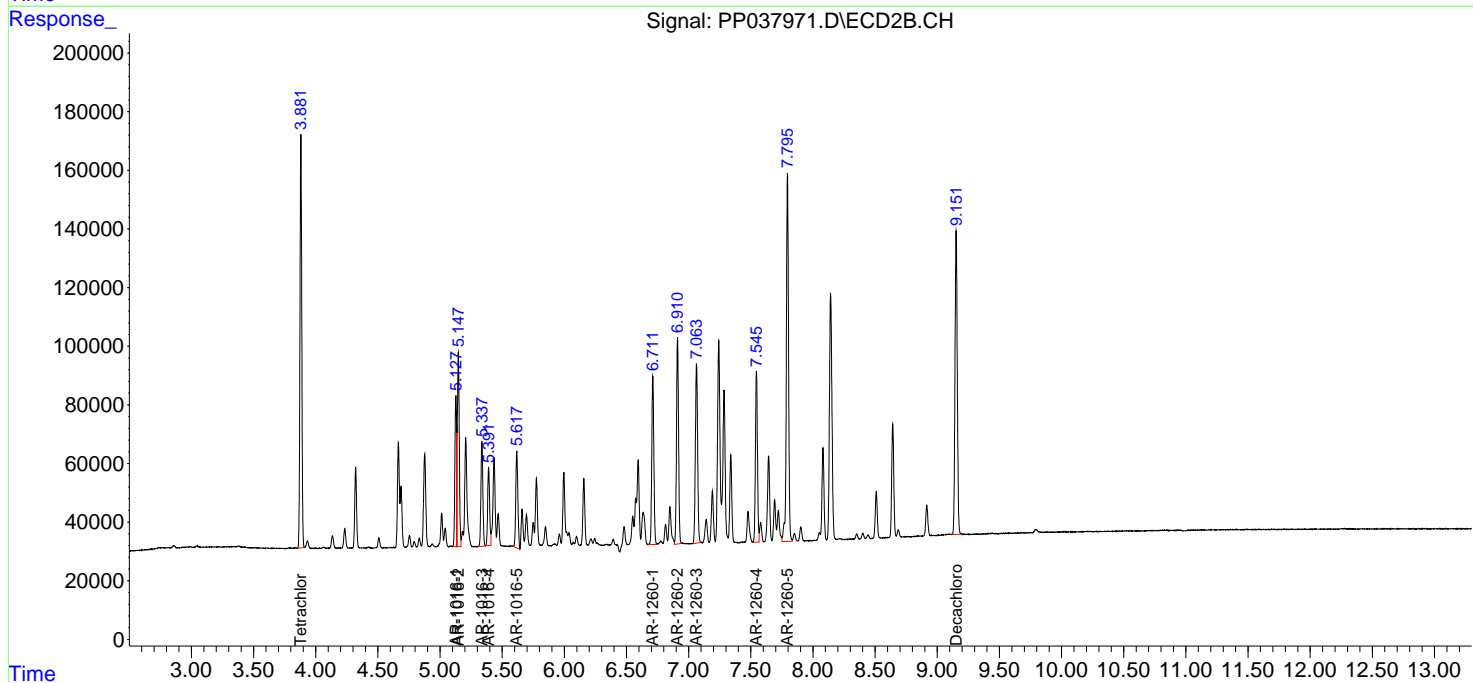
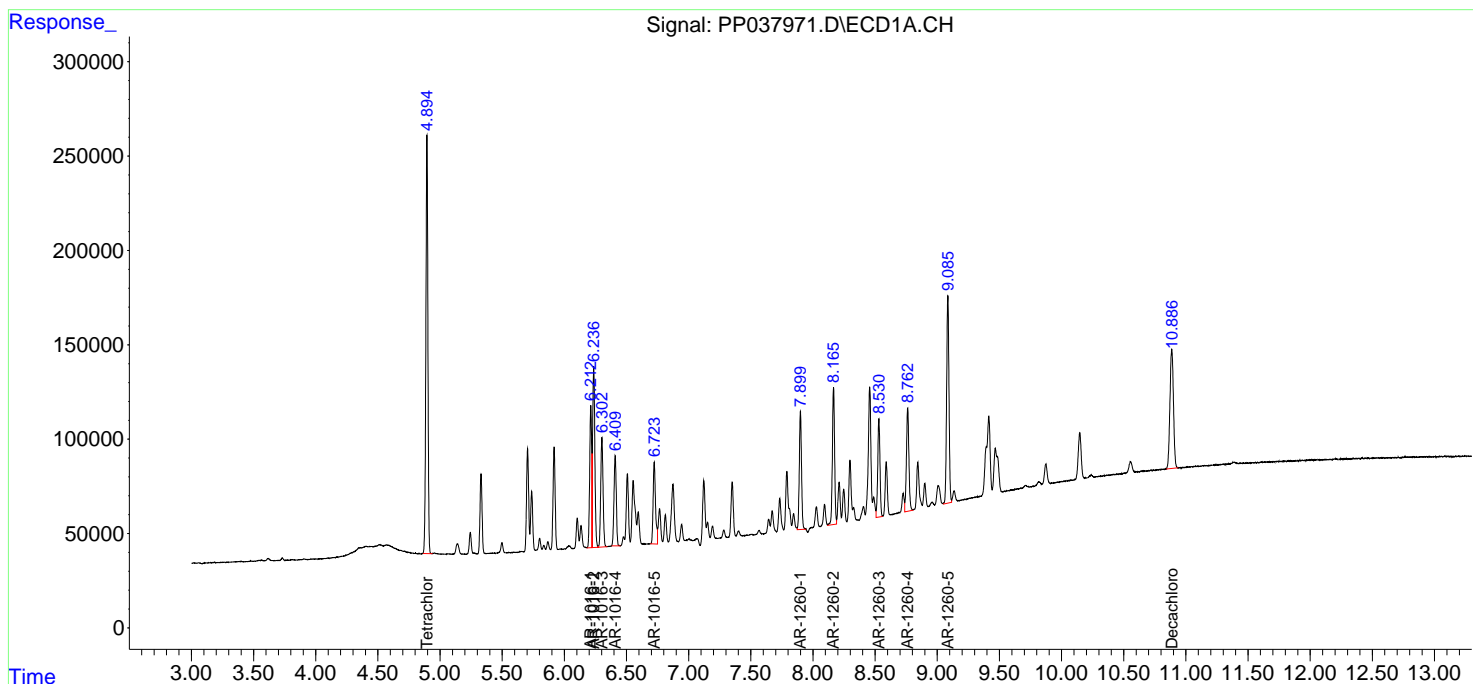
Data Path : Z:\pestpcbsrv\HPCHEM1\ECD_P\Data\PP080321\
 Data File : PP037971.D
 Signal(s) : Signal #1: ECD1A.CH Signal #2: ECD2B.CH
 Acq On : 04 Aug 2021 00:17
 Operator : AJ\MA
 Sample : AR1660CCC500
 Misc :
 ALS Vial : 3 Sample Multiplier: 1

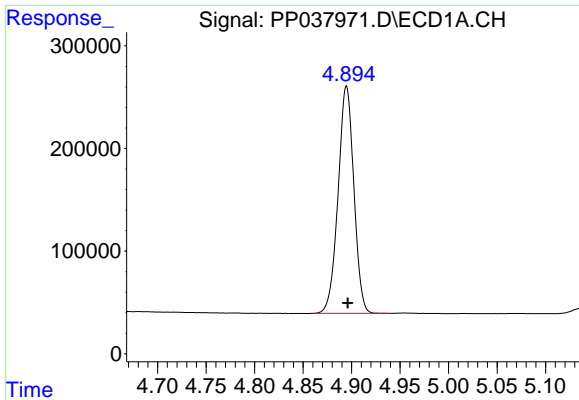
Instrument :
 ECD_P
Client Sampled :
 AR1660CCC500

Manual Integrations
APPROVED
 mohammad
 8/4/2021 11:55:34 AM

Integration File signal 1: autoint1.e
 Integration File signal 2: autoint2.e
 Quant Time: Aug 04 03:15:14 2021
 Quant Method : Z:\pestpcbsrv\HPCHEM1\ECD_P\methods\PP080221.M
 Quant Title : GC EXTRACTABLES
 QLast Update : Tue Aug 03 05:09:57 2021
 Response via : Initial Calibration
 Integrator: ChemStation 6890 Scale Mode: Small noise peaks clipped

Volume Inj. : 2 µl
 Signal #1 Phase : ZB-MR1 Signal #2 Phase: ZB-MR2
 Signal #1 Info : 30Mx0.32mmx 0.50µ Signal #2 Info : 30M x 0.32mm x 0.25µm

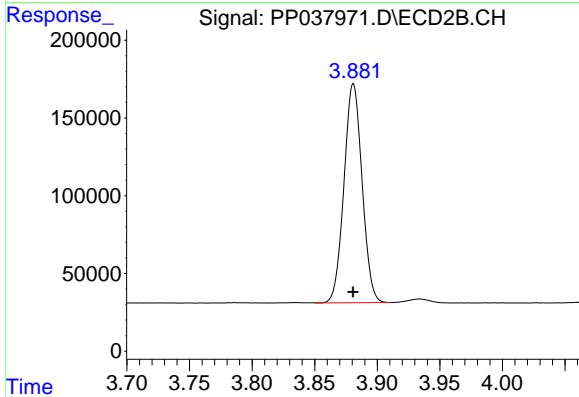




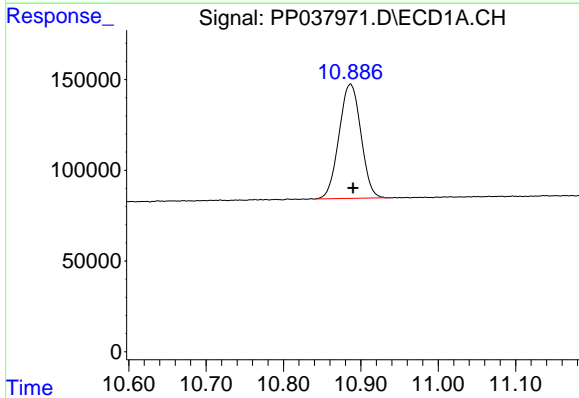
#1 Tetrachloro-m-xylene
 R.T.: 4.895 min
 Delta R.T.: -0.001 min
 Response: 2504639
 Conc: 56.21 ng/ml

Instrument :
 ECD_P
ClientSampled :
 AR1660CCC500

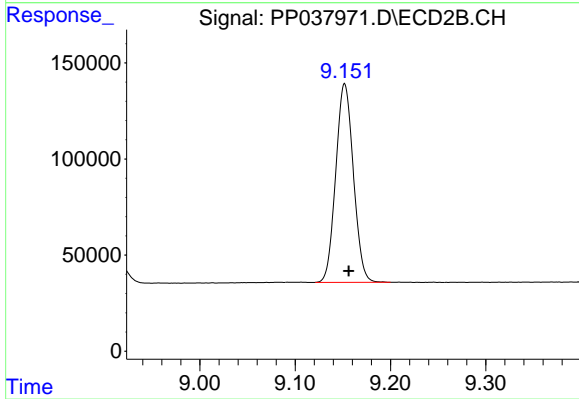
Manual Integrations
APPROVED
 mohammad
 8/4/2021 11:55:34 AM



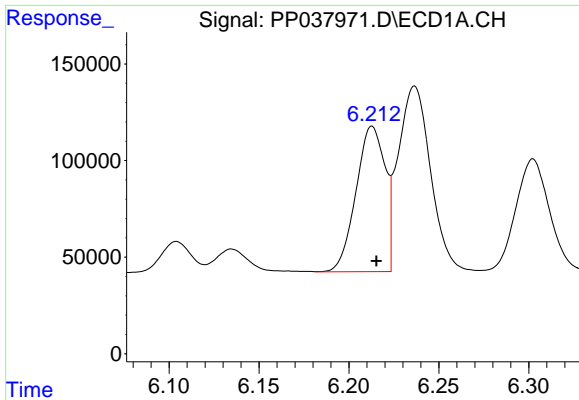
#1 Tetrachloro-m-xylene
 R.T.: 3.881 min
 Delta R.T.: 0.000 min
 Response: 1415204
 Conc: 56.37 ng/ml



#2 Decachlorobiphenyl
 R.T.: 10.886 min
 Delta R.T.: -0.003 min
 Response: 1238791
 Conc: 47.29 ng/ml



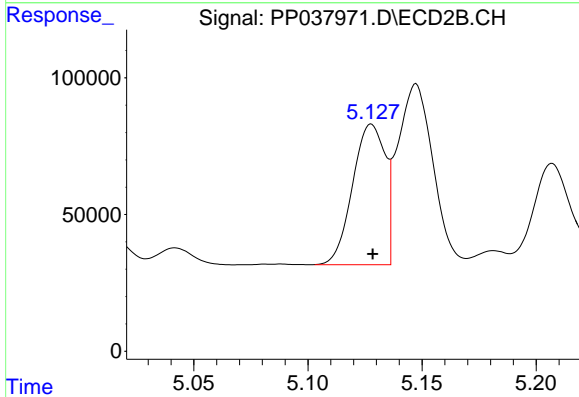
#2 Decachlorobiphenyl
 R.T.: 9.152 min
 Delta R.T.: -0.004 min
 Response: 1327797
 Conc: 56.70 ng/ml



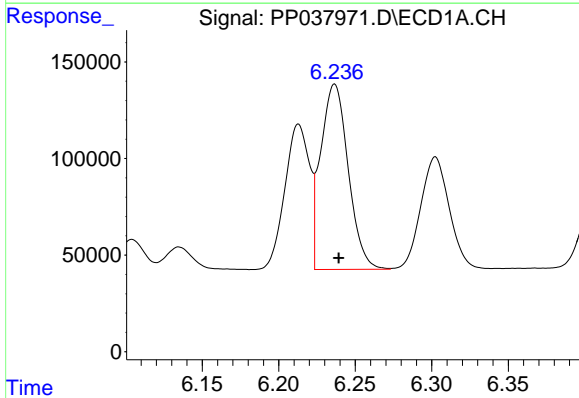
#3 AR-1016-1
 R.T.: 6.213 min
 Delta R.T.: -0.002 min
 Response: 845328
 Conc: 535.25 ng/ml

Instrument :
 ECD_P
ClientSampled :
 AR1660CCC500

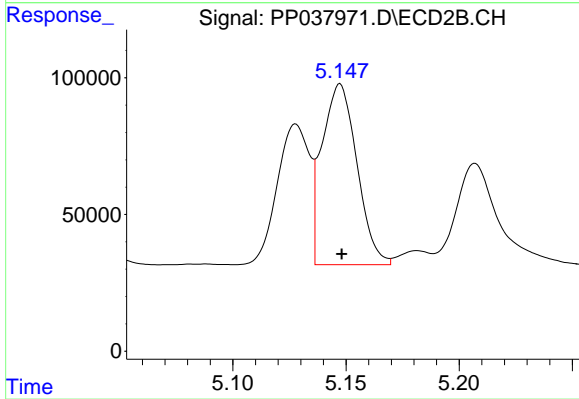
Manual Integrations
APPROVED
 mohammad
 8/4/2021 11:55:34 AM



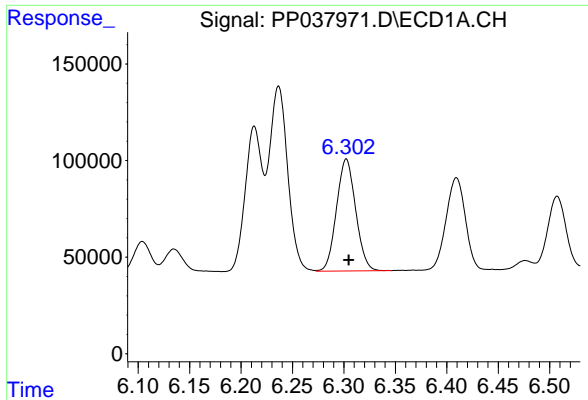
#3 AR-1016-1
 R.T.: 5.128 min
 Delta R.T.: 0.000 min
 Response: 508845
 Conc: 557.44 ng/ml



#4 AR-1016-2
 R.T.: 6.237 min
 Delta R.T.: -0.003 min
 Response: 1199110
 Conc: 535.34 ng/ml



#4 AR-1016-2
 R.T.: 5.147 min
 Delta R.T.: 0.000 min
 Response: 711123
 Conc: 563.36 ng/ml

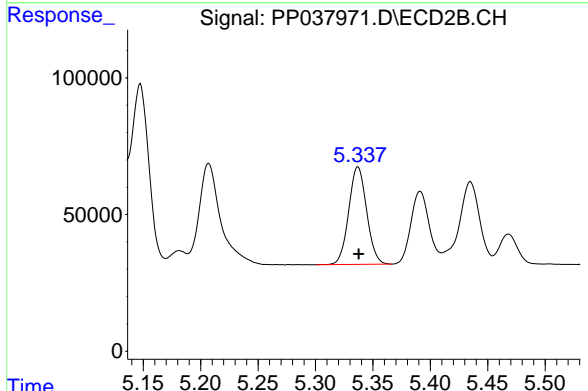


#5 AR-1016-3

R.T.: 6.302 min
 Delta R.T.: -0.002 min
 Response: 751400
 Conc: 542.93 ng/ml

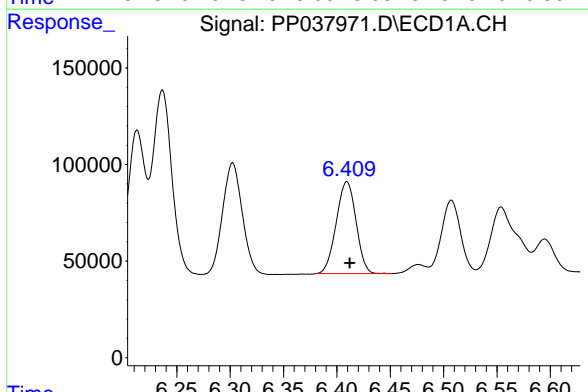
Instrument :
 ECD_P
ClientSampled :
 AR1660CCC500

Manual Integrations
APPROVED
 mohammad
 8/4/2021 11:55:34 AM



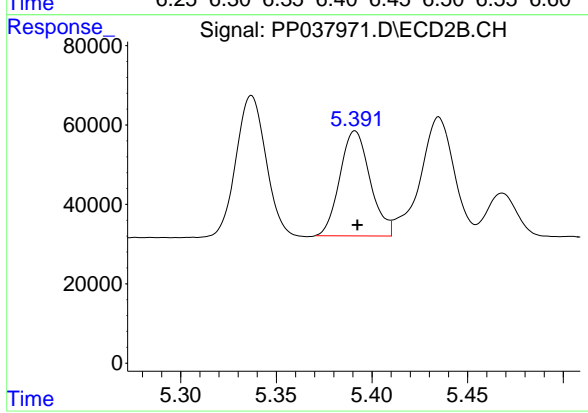
#5 AR-1016-3

R.T.: 5.337 min
 Delta R.T.: 0.000 min
 Response: 389861
 Conc: 581.67 ng/ml



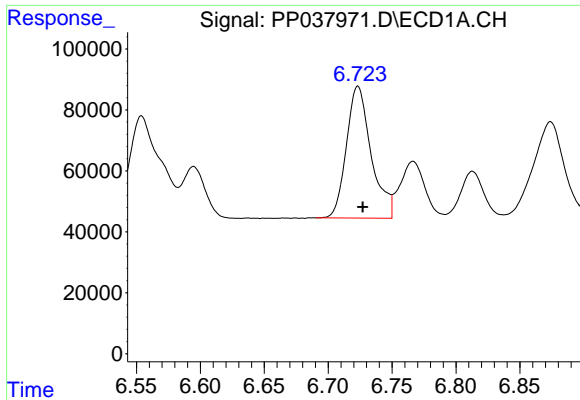
#6 AR-1016-4

R.T.: 6.409 min
 Delta R.T.: -0.003 min
 Response: 616115
 Conc: 537.05 ng/ml



#6 AR-1016-4

R.T.: 5.391 min
 Delta R.T.: -0.001 min
 Response: 292264
 Conc: 574.38 ng/ml

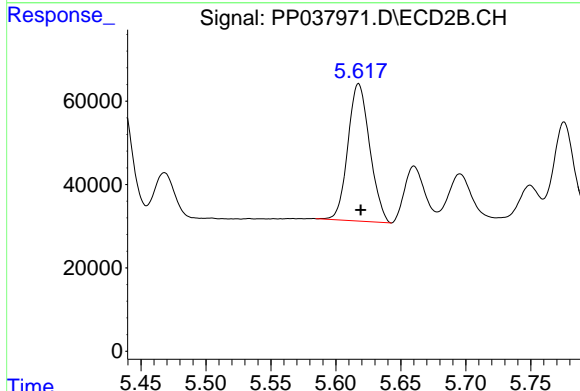


#7 AR-1016-5

R.T.: 6.723 min
 Delta R.T.: -0.004 min
 Response: 583959
 Conc: 534.84 ng/ml

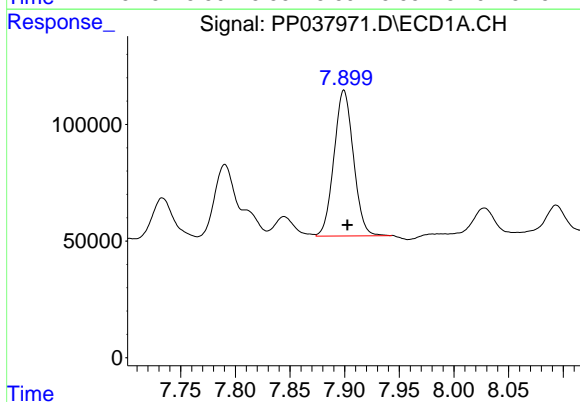
Instrument :
 ECD_P
ClientSampleId :
 AR1660CCC500

Manual Integrations
APPROVED
 mohammad
 8/4/2021 11:55:34 AM



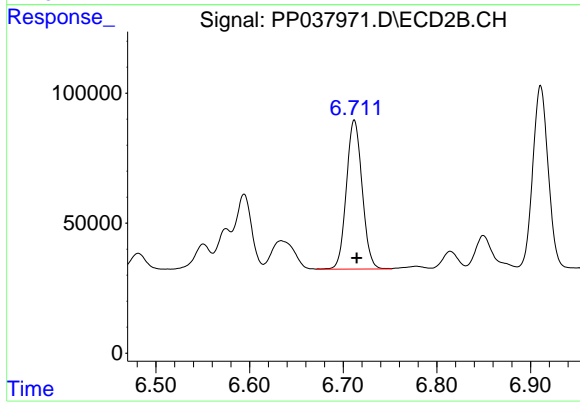
#7 AR-1016-5

R.T.: 5.618 min
 Delta R.T.: -0.002 min
 Response: 385359
 Conc: 564.14 ng/ml



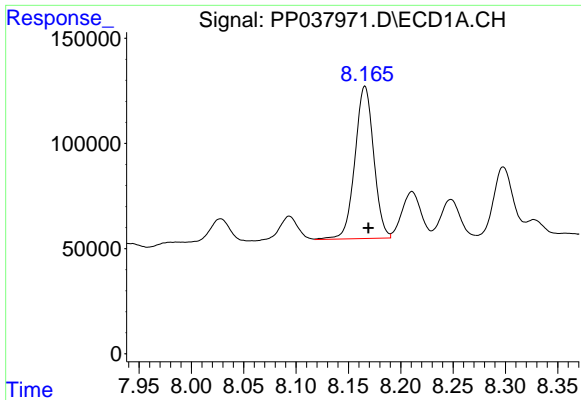
#31 AR-1260-1

R.T.: 7.899 min
 Delta R.T.: -0.003 min
 Response: 773552
 Conc: 467.69 ng/ml m



#31 AR-1260-1

R.T.: 6.711 min
 Delta R.T.: -0.003 min
 Response: 669292
 Conc: 568.77 ng/ml m

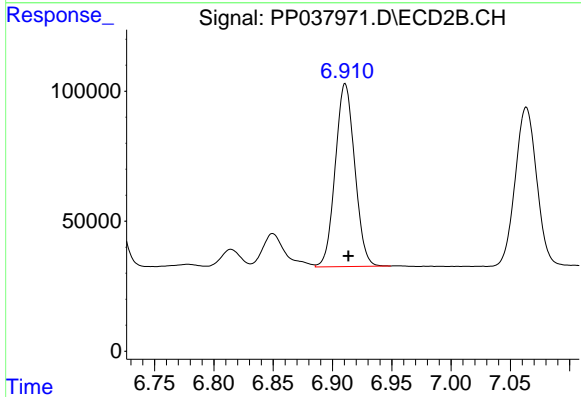


#32 AR-1260-2

R.T.: 8.166 min
 Delta R.T.: -0.003 min
 Response: 902244
 Conc: 455.86 ng/ml

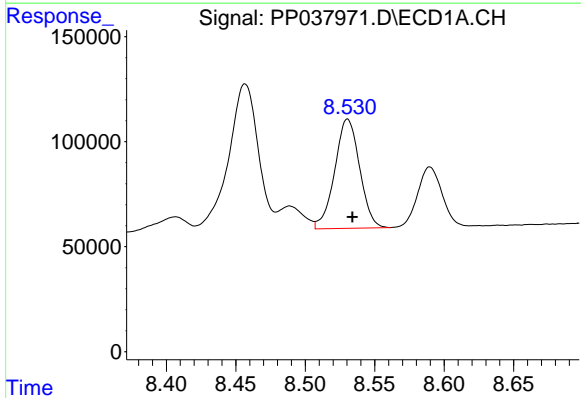
Instrument :
 ECD_P
ClientSampled :
 AR1660CCC500

Manual Integrations
APPROVED
 mohammad
 8/4/2021 11:55:34 AM



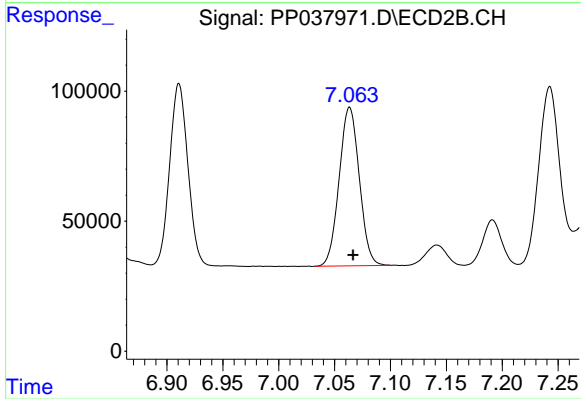
#32 AR-1260-2

R.T.: 6.911 min
 Delta R.T.: -0.003 min
 Response: 804052
 Conc: 562.75 ng/ml



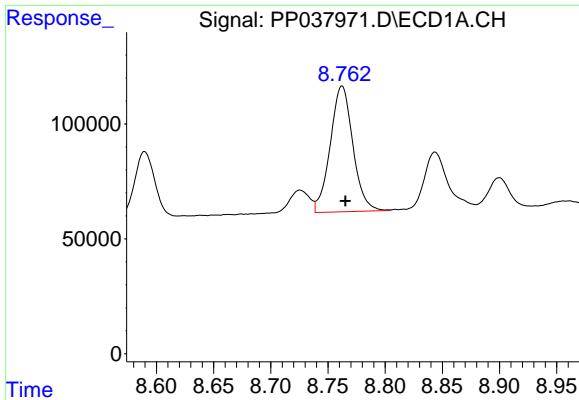
#33 AR-1260-3

R.T.: 8.530 min
 Delta R.T.: -0.003 min
 Response: 649647
 Conc: 443.75 ng/ml



#33 AR-1260-3

R.T.: 7.063 min
 Delta R.T.: -0.003 min
 Response: 765288
 Conc: 541.78 ng/ml

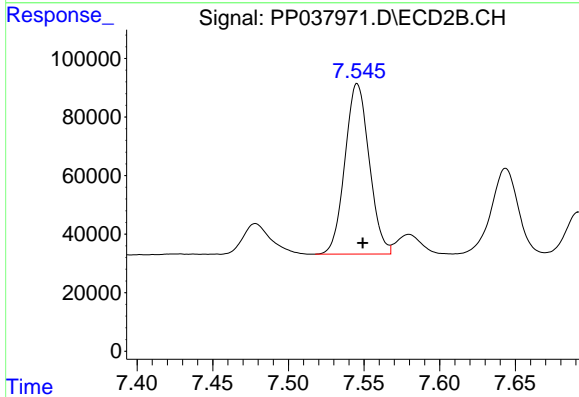


#34 AR-1260-4

R.T.: 8.762 min
 Delta R.T.: -0.003 min
 Response: 754442
 Conc: 435.24 ng/ml

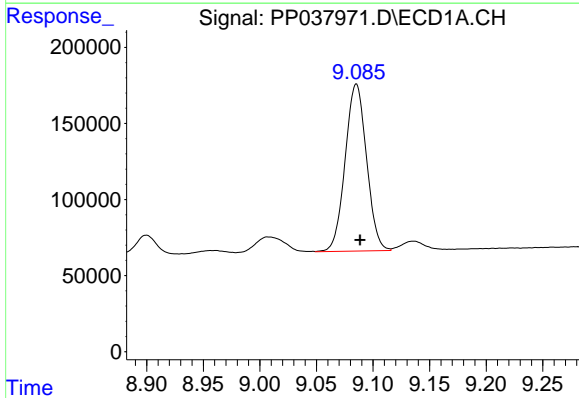
Instrument :
 ECD_P
 ClientSampleId :
 AR1660CCC500

Manual Integrations
 APPROVED
 mohammad
 8/4/2021 11:55:34 AM



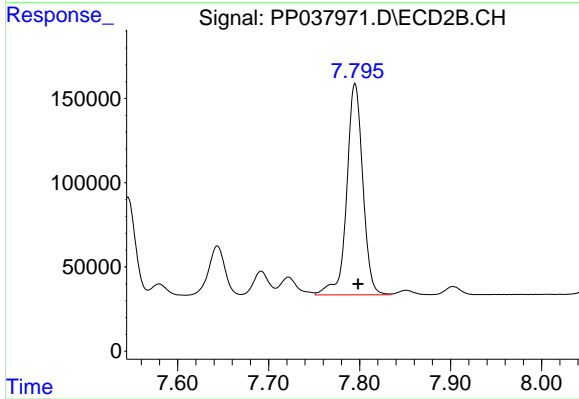
#34 AR-1260-4

R.T.: 7.546 min
 Delta R.T.: -0.004 min
 Response: 650961
 Conc: 574.45 ng/ml



#35 AR-1260-5

R.T.: 9.085 min
 Delta R.T.: -0.003 min
 Response: 1443624
 Conc: 440.92 ng/ml



#35 AR-1260-5

R.T.: 7.795 min
 Delta R.T.: -0.003 min
 Response: 1543302
 Conc: 556.29 ng/ml