

Data Path : Z:\pestpcbsrv\HPCHEM1\ECD\_P\Data\PP080322\  
 Data File : PP050148.D  
 Signal(s) : Signal #1: ECD1A.ch Signal #2: ECD2B.ch  
 Acq On : 04 Aug 2022 03:32  
 Operator : YP\AJ  
 Sample : N4017-04  
 Misc :  
 ALS Vial : 32 Sample Multiplier: 1

Instrument :  
 ECD\_P  
 ClientSampleId :  
 SB11

Integration File signal 1: autoint1.e  
 Integration File signal 2: autoint2.e  
 Quant Time: Aug 04 06:33:26 2022  
 Quant Method : Z:\pestpcbsrv\HPCHEM1\ECD\_P\methods\PP071422.M  
 Quant Title : GC EXTRACTABLES  
 QLast Update : Thu Jul 14 06:08:44 2022  
 Response via : Initial Calibration  
 Integrator: ChemStation

Volume Inj. : 2 µl  
 Signal #1 Phase : ZB-MR1 Signal #2 Phase: ZB-MR2  
 Signal #1 Info : 30Mx0.32mmx 0.50µ Signal #2 Info : 30M x 0.32mm x 0.25µm

Compound	RT#1	RT#2	Resp#1	Resp#2	ng/ml	ng/ml
-----						
System Monitoring Compounds						
1) SA Tetrachlo...	4.348	3.597	30835282	61537953	21.249	25.176
2) SA Decachlor...	10.096	8.559	23603513	20984990	16.688	18.019

Target Compounds

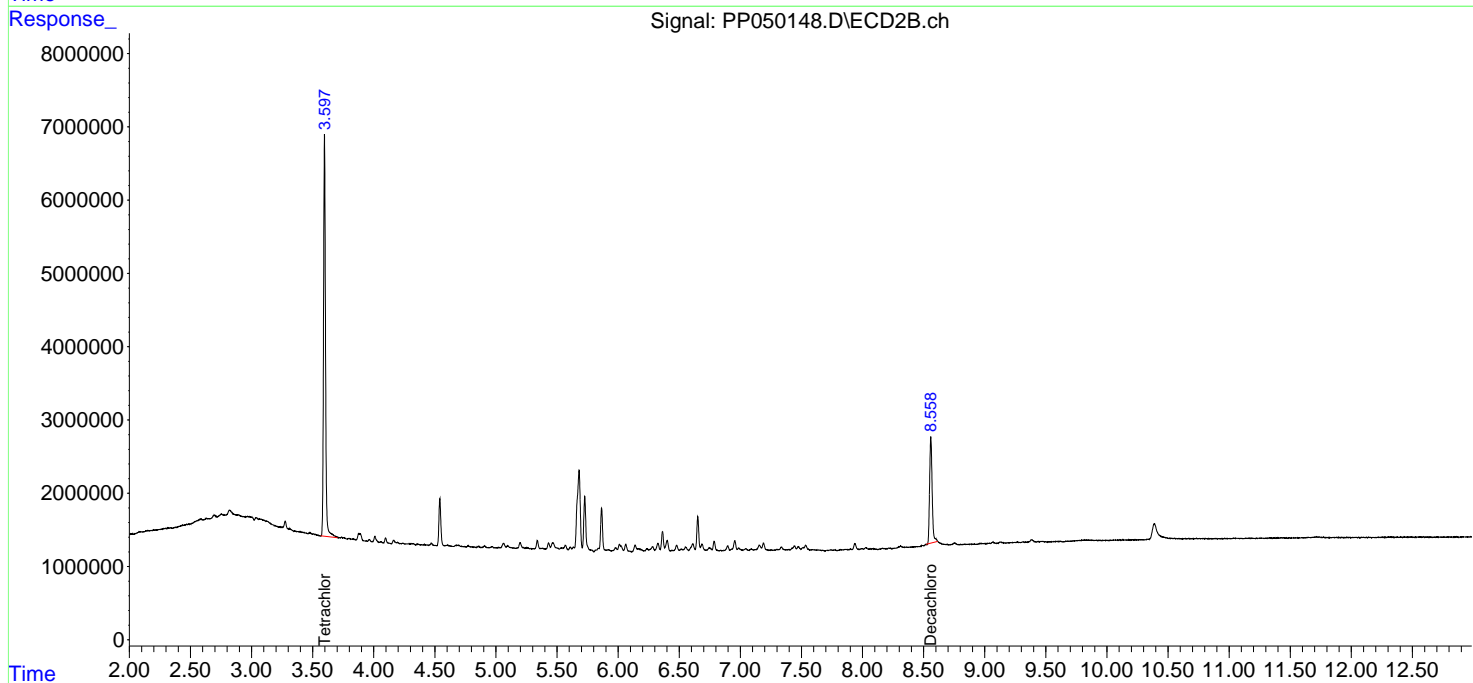
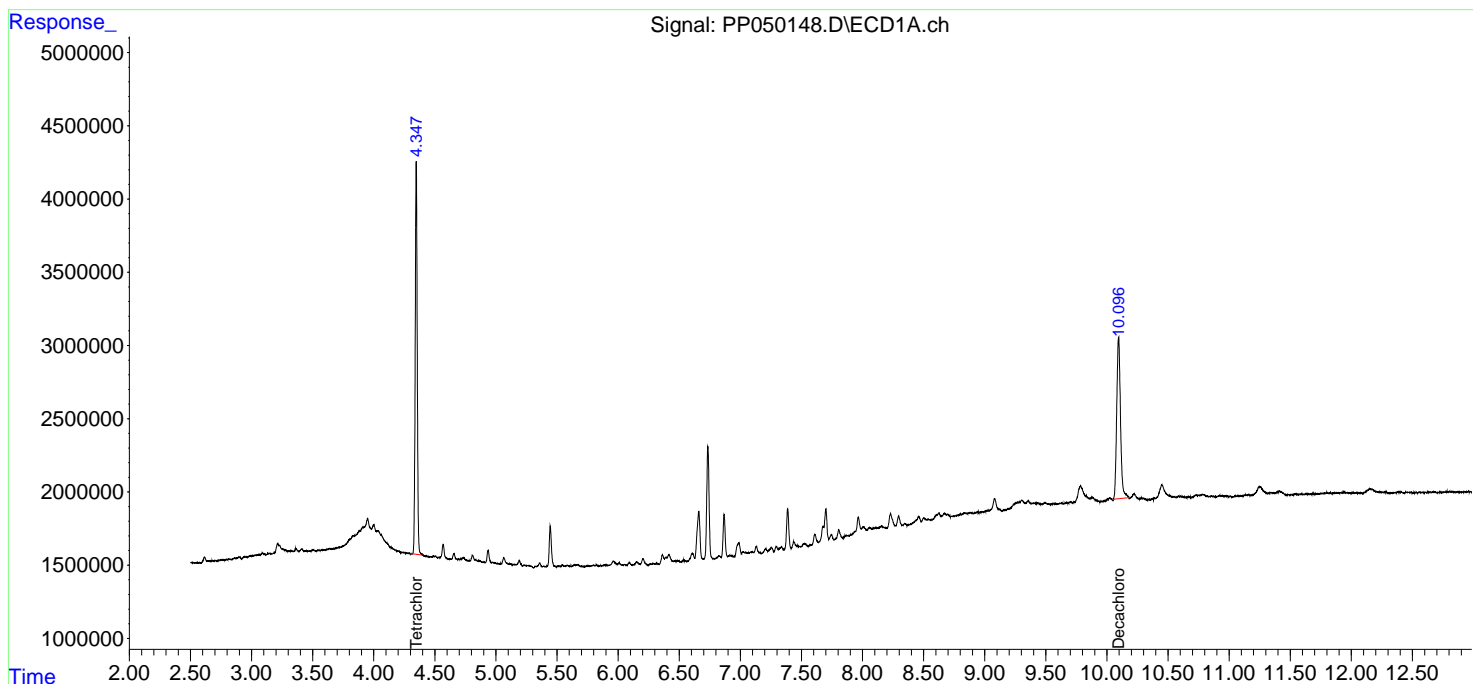
(f)=RT Delta > 1/2 Window (#)=Amounts differ by > 25% (m)=manual int.

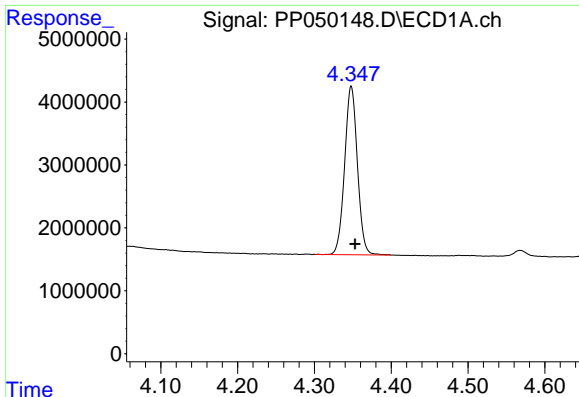
Data Path : Z:\pestpcbsrv\HPCHEM1\ECD\_P\Data\PP080322\  
 Data File : PP050148.D  
 Signal(s) : Signal #1: ECD1A.ch Signal #2: ECD2B.ch  
 Acq On : 04 Aug 2022 03:32  
 Operator : YP\AJ  
 Sample : N4017-04  
 Misc :  
 ALS Vial : 32 Sample Multiplier: 1

Instrument :  
 ECD\_P  
 ClientSampleId :  
 SB11

Integration File signal 1: autoint1.e  
 Integration File signal 2: autoint2.e  
 Quant Time: Aug 04 06:33:26 2022  
 Quant Method : Z:\pestpcbsrv\HPCHEM1\ECD\_P\methods\PP071422.M  
 Quant Title : GC EXTRACTABLES  
 QLast Update : Thu Jul 14 06:08:44 2022  
 Response via : Initial Calibration  
 Integrator: ChemStation

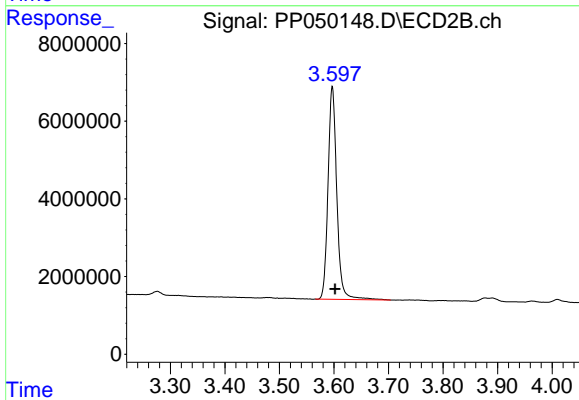
Volume Inj. : 2 µl  
 Signal #1 Phase : ZB-MR1 Signal #2 Phase: ZB-MR2  
 Signal #1 Info : 30Mx0.32mmx 0.50µ Signal #2 Info : 30M x 0.32mm x 0.25µm



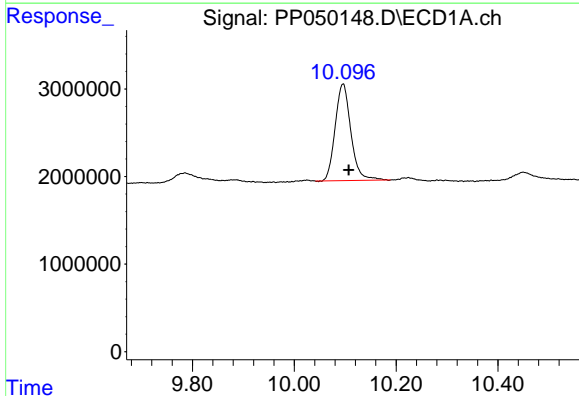


#1 Tetrachloro-m-xylene  
 R.T.: 4.348 min  
 Delta R.T.: -0.005 min  
 Response: 30835282  
 Conc: 21.25 ng/ml

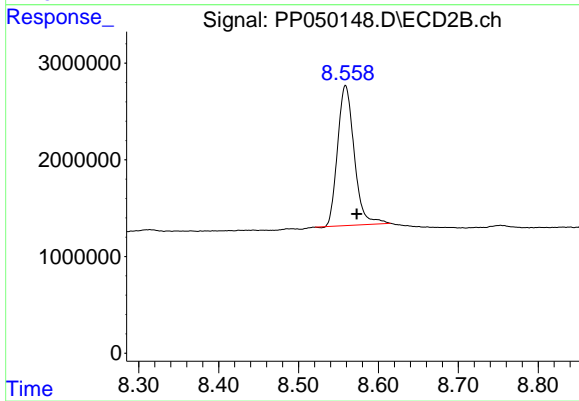
Instrument :  
 ECD\_P  
 ClientSampleId :  
 SB11



#1 Tetrachloro-m-xylene  
 R.T.: 3.597 min  
 Delta R.T.: -0.005 min  
 Response: 61537953  
 Conc: 25.18 ng/ml



#2 Decachlorobiphenyl  
 R.T.: 10.096 min  
 Delta R.T.: -0.011 min  
 Response: 23603513  
 Conc: 16.69 ng/ml



#2 Decachlorobiphenyl  
 R.T.: 8.559 min  
 Delta R.T.: -0.014 min  
 Response: 20984990  
 Conc: 18.02 ng/ml