

Data Path : Z:\pestpcbsrv\HPCHEM1\ECD\_P\Data\PP080423\  
 Data File : PP059159.D  
 Signal(s) : Signal #1: ECD1A.ch Signal #2: ECD2B.ch  
 Acq On : 04 Aug 2023 23:30  
 Operator : YP\AJ  
 Sample : AR1254CCC500  
 Misc :  
 ALS Vial : 6 Sample Multiplier: 1

Instrument :  
 ECD\_P  
 ClientSampleId :  
 AR1254CCC500

Integration File signal 1: autoint1.e  
 Integration File signal 2: autoint2.e  
 Quant Time: Aug 05 06:30:47 2023  
 Quant Method : Z:\pestpcbsrv\HPCHEM1\ECD\_P\methods\PP073123.M  
 Quant Title : GC EXTRACTABLES  
 QLast Update : Tue Aug 01 05:06:30 2023  
 Response via : Initial Calibration  
 Integrator: ChemStation

Volume Inj. : 2 µl  
 Signal #1 Phase : ZB-MR1 Signal #2 Phase: ZB-MR2  
 Signal #1 Info : 30Mx0.32mmx 0.50µ Signal #2 Info : 30M x 0.32mm x 0.25µm

Compound	RT#1	RT#2	Resp#1	Resp#2	ng/ml	ng/ml
-----						
System Monitoring Compounds						
1) SA Tetrachlo...	4.421	3.656	90432272	144.7E6	56.043	59.851
2) SA Decachlor...	10.217	8.693	46134165	73521929	49.219	54.621
Target Compounds						
26) L6 AR-1254-1	6.457	5.555	32634971	62947763	555.672	585.421
27) L6 AR-1254-2	6.677	5.704	47528229	54240971	568.518	593.518
28) L6 AR-1254-3	7.044	6.109	47207035	82400033	602.698	592.042
29) L6 AR-1254-4	7.331	6.339	30480055	44237977	605.250	575.517
30) L6 AR-1254-5	7.752	6.758	31473623	64174447	572.411	561.797
-----						

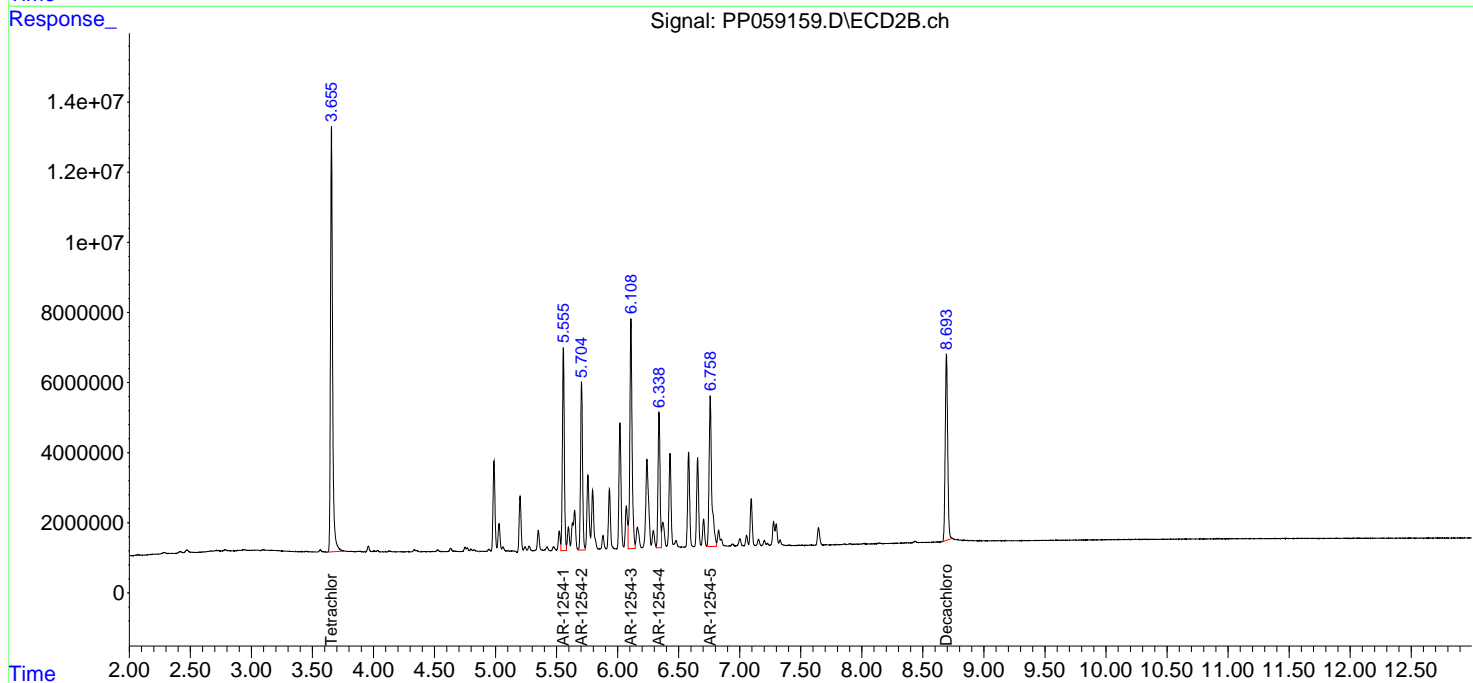
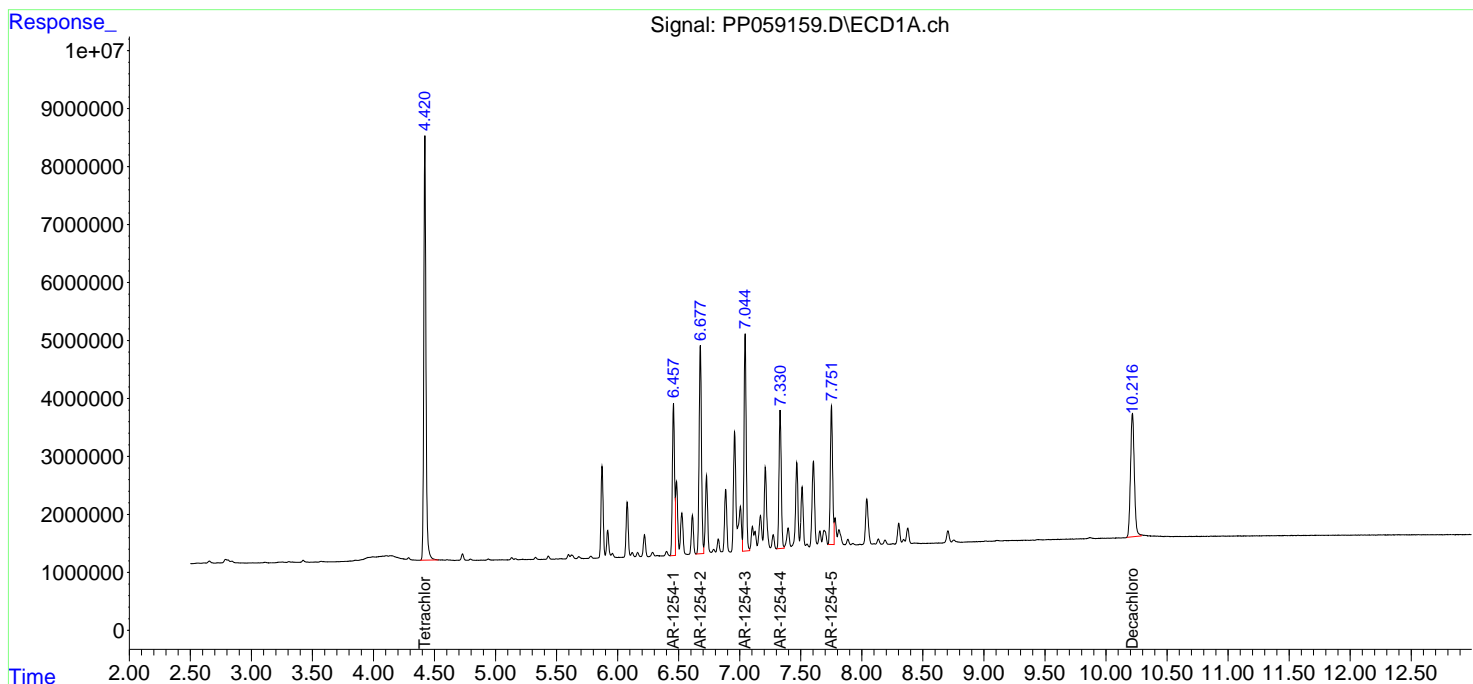
(f)=RT Delta > 1/2 Window (#)=Amounts differ by > 25% (m)=manual int.

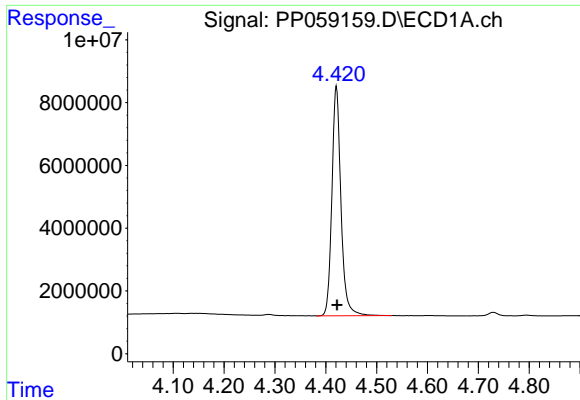
Data Path : Z:\pestpcbsrv\HPCHEM1\ECD\_P\Data\PP080423\  
 Data File : PP059159.D  
 Signal(s) : Signal #1: ECD1A.ch Signal #2: ECD2B.ch  
 Acq On : 04 Aug 2023 23:30  
 Operator : YP\AJ  
 Sample : AR1254CCC500  
 Misc :  
 ALS Vial : 6 Sample Multiplier: 1

Instrument :  
 ECD\_P  
 ClientSampleId :  
 AR1254CCC500

Integration File signal 1: autoint1.e  
 Integration File signal 2: autoint2.e  
 Quant Time: Aug 05 06:30:47 2023  
 Quant Method : Z:\pestpcbsrv\HPCHEM1\ECD\_P\methods\PP073123.M  
 Quant Title : GC EXTRACTABLES  
 QLast Update : Tue Aug 01 05:06:30 2023  
 Response via : Initial Calibration  
 Integrator: ChemStation

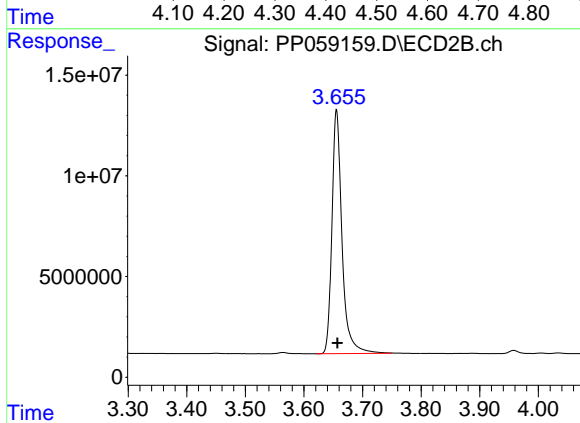
Volume Inj. : 2 µl  
 Signal #1 Phase : ZB-MR1 Signal #2 Phase: ZB-MR2  
 Signal #1 Info : 30Mx0.32mmx 0.50µ Signal #2 Info : 30M x 0.32mm x 0.25µm



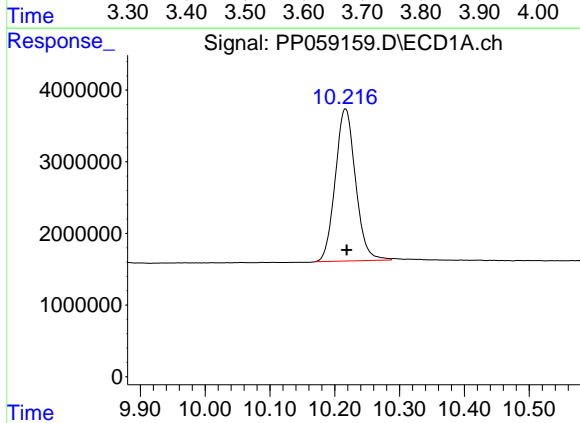


#1 Tetrachloro-m-xylene  
 R.T.: 4.421 min  
 Delta R.T.: -0.001 min  
 Response: 90432272  
 Conc: 56.04 ng/ml

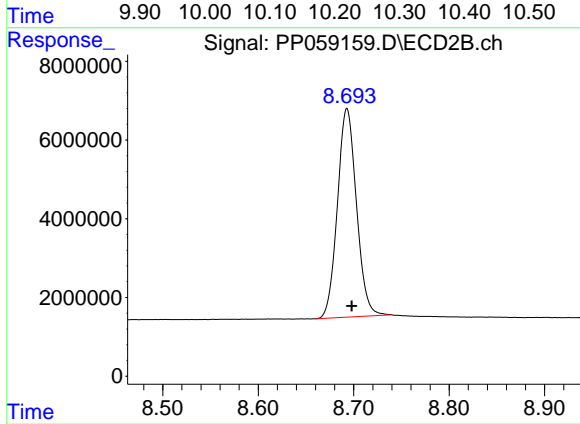
Instrument :  
 ECD\_P  
 ClientSampleId :  
 AR1254CCC500



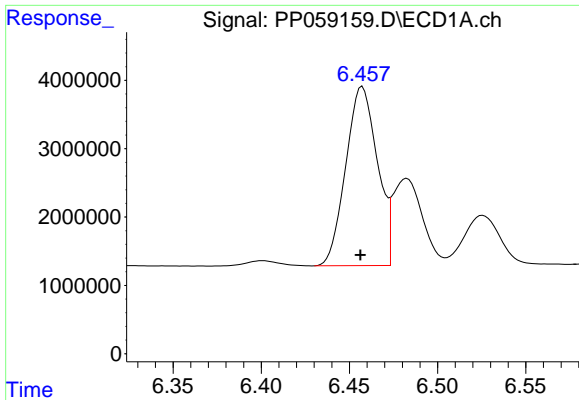
#1 Tetrachloro-m-xylene  
 R.T.: 3.656 min  
 Delta R.T.: -0.002 min  
 Response: 144721829  
 Conc: 59.85 ng/ml



#2 Decachlorobiphenyl  
 R.T.: 10.217 min  
 Delta R.T.: -0.002 min  
 Response: 46134165  
 Conc: 49.22 ng/ml



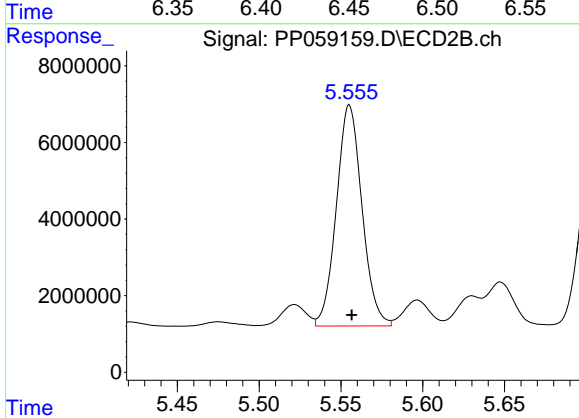
#2 Decachlorobiphenyl  
 R.T.: 8.693 min  
 Delta R.T.: -0.005 min  
 Response: 73521929  
 Conc: 54.62 ng/ml



#26 AR-1254-1

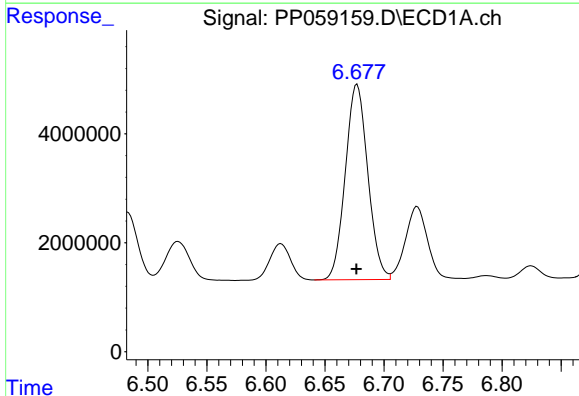
R.T.: 6.457 min  
Delta R.T.: 0.001 min  
Response: 32634971  
Conc: 555.67 ng/ml

Instrument :  
ECD\_P  
ClientSampleId :  
AR1254CCC500



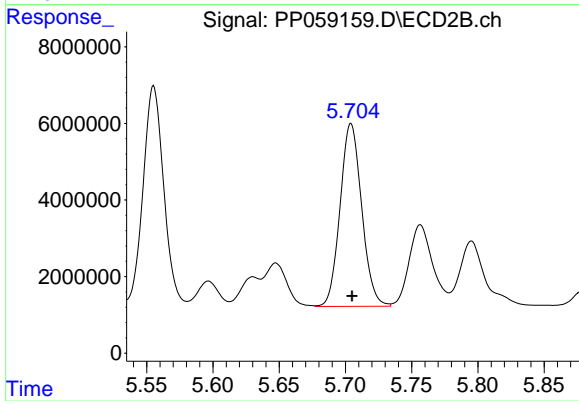
#26 AR-1254-1

R.T.: 5.555 min  
Delta R.T.: -0.001 min  
Response: 62947763  
Conc: 585.42 ng/ml



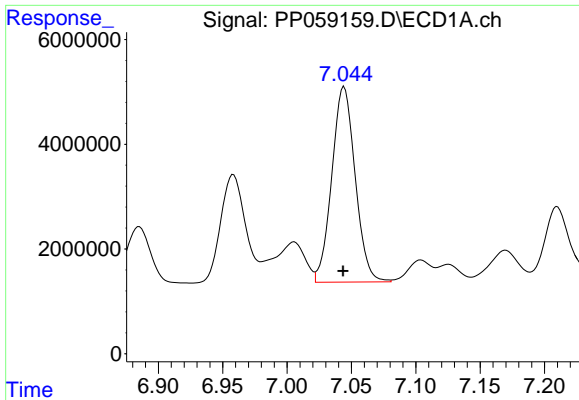
#27 AR-1254-2

R.T.: 6.677 min  
Delta R.T.: 0.000 min  
Response: 47528229  
Conc: 568.52 ng/ml



#27 AR-1254-2

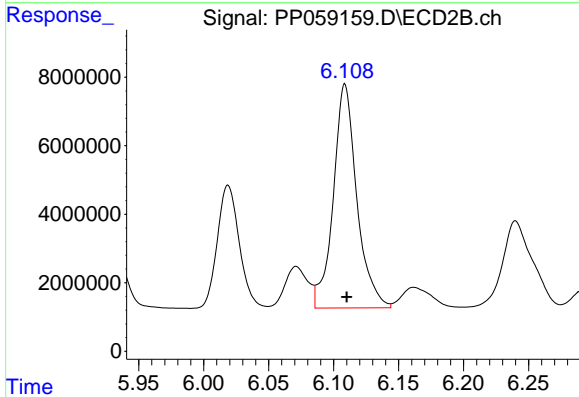
R.T.: 5.704 min  
Delta R.T.: 0.000 min  
Response: 54240971  
Conc: 593.52 ng/ml



#28 AR-1254-3

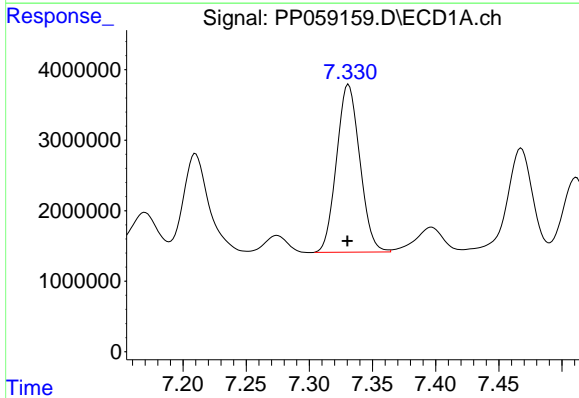
R.T.: 7.044 min  
 Delta R.T.: 0.000 min  
 Response: 47207035  
 Conc: 602.70 ng/ml

Instrument :  
 ECD\_P  
 ClientSampleId :  
 AR1254CCC500



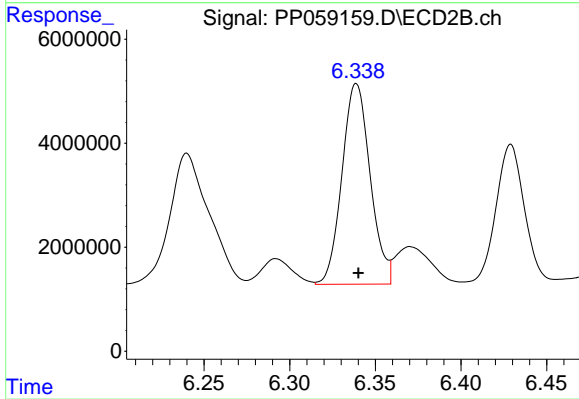
#28 AR-1254-3

R.T.: 6.109 min  
 Delta R.T.: -0.001 min  
 Response: 82400033  
 Conc: 592.04 ng/ml



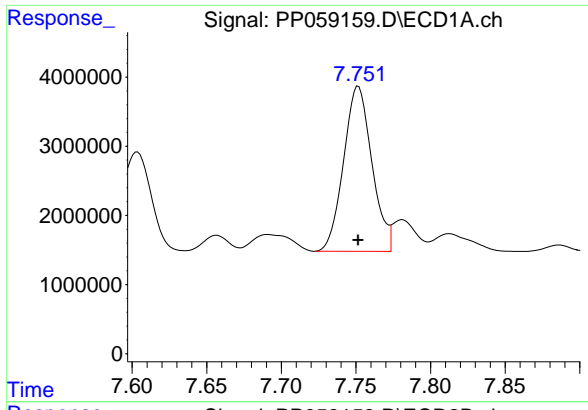
#29 AR-1254-4

R.T.: 7.331 min  
 Delta R.T.: 0.000 min  
 Response: 30480055  
 Conc: 605.25 ng/ml



#29 AR-1254-4

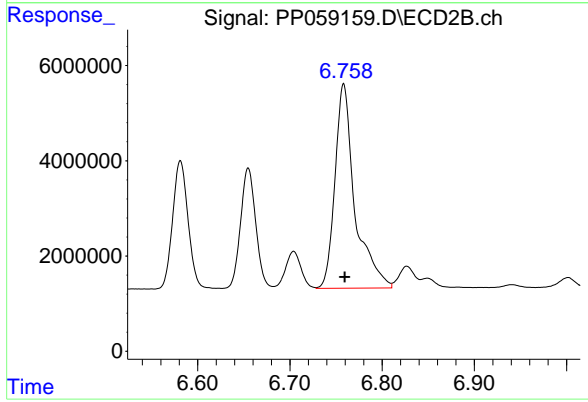
R.T.: 6.339 min  
 Delta R.T.: -0.001 min  
 Response: 44237977  
 Conc: 575.52 ng/ml



#30 AR-1254-5

R.T.: 7.752 min  
Delta R.T.: 0.000 min  
Response: 31473623  
Conc: 572.41 ng/ml

Instrument :  
ECD\_P  
ClientSampleId :  
AR1254CCC500



#30 AR-1254-5

R.T.: 6.758 min  
Delta R.T.: -0.001 min  
Response: 64174447  
Conc: 561.80 ng/ml