

Data Path : Z:\pestpcbsrv\HPCHEM1\ECD_P\Data\PP080521\
 Data File : PP038008.D
 Signal(s) : Signal #1: ECD1A.CH Signal #2: ECD2B.CH
 Acq On : 05 Aug 2021 7:15
 Operator : AJ\MA
 Sample : AR1660ICC050
 Misc :
 ALS Vial : 7 Sample Multiplier: 1

Instrument :
 ECD_P
ClientSampleId :
 AR1660ICC050

Manual Integrations
APPROVED

mohammad
 8/6/2021 3:06:07 PM

Integration File signal 1: autoint1.e
 Integration File signal 2: autoint2.e
 Quant Time: Aug 05 07:14:22 2021
 Quant Method : Z:\pestpcbsrv\HPCHEM1\ECD_P\methods\PP080521.M
 Quant Title : GC EXTRACTABLES
 QLast Update : Thu Aug 05 07:08:14 2021
 Response via : Initial Calibration
 Integrator: ChemStation 6890 Scale Mode: Small noise peaks clipped

Volume Inj. : 2 µl
 Signal #1 Phase : ZB-MR2 Signal #2 Phase: ZB-MR2
 Signal #1 Info : 30Mx0.32mmx 0.50µ Signal #2 Info : 30M x 0.32mm x 0.25µm

Compound	RT#1	RT#2	Resp#1	Resp#2	ng/ml	ng/ml

System Monitoring Compounds						
1) SA Tetrachlo...	4.893	3.879	243134	133125	5.543	5.179
2) SA Decachlor...	10.886	9.150	118899	144514	5.190	5.643
Target Compounds						
3) L1 AR-1016-1	6.212	5.126	83107	55448	56.919	58.906
4) L1 AR-1016-2	6.236	5.145	121655	75085	58.343	57.232
5) L1 AR-1016-3	6.301	5.335	74014	41374	56.308	56.886
6) L1 AR-1016-4	6.409	5.390	58964	32228	54.293	57.410
7) L1 AR-1016-5	6.723	5.616	54296	46189	54.011	64.384
31) L7 AR-1260-1	7.900	6.711	84865	74676	59.871	58.501
32) L7 AR-1260-2	8.165	6.910	106292	89182	64.513m	58.565
33) L7 AR-1260-3	8.531	7.062	69083	96784	59.329	67.200
34) L7 AR-1260-4	8.763	7.544	87213	64801	63.906	52.789
35) L7 AR-1260-5	9.086	7.794	157397	154687	61.074	53.084

(f)=RT Delta > 1/2 Window (#)=Amounts differ by > 25% (m)=manual int.

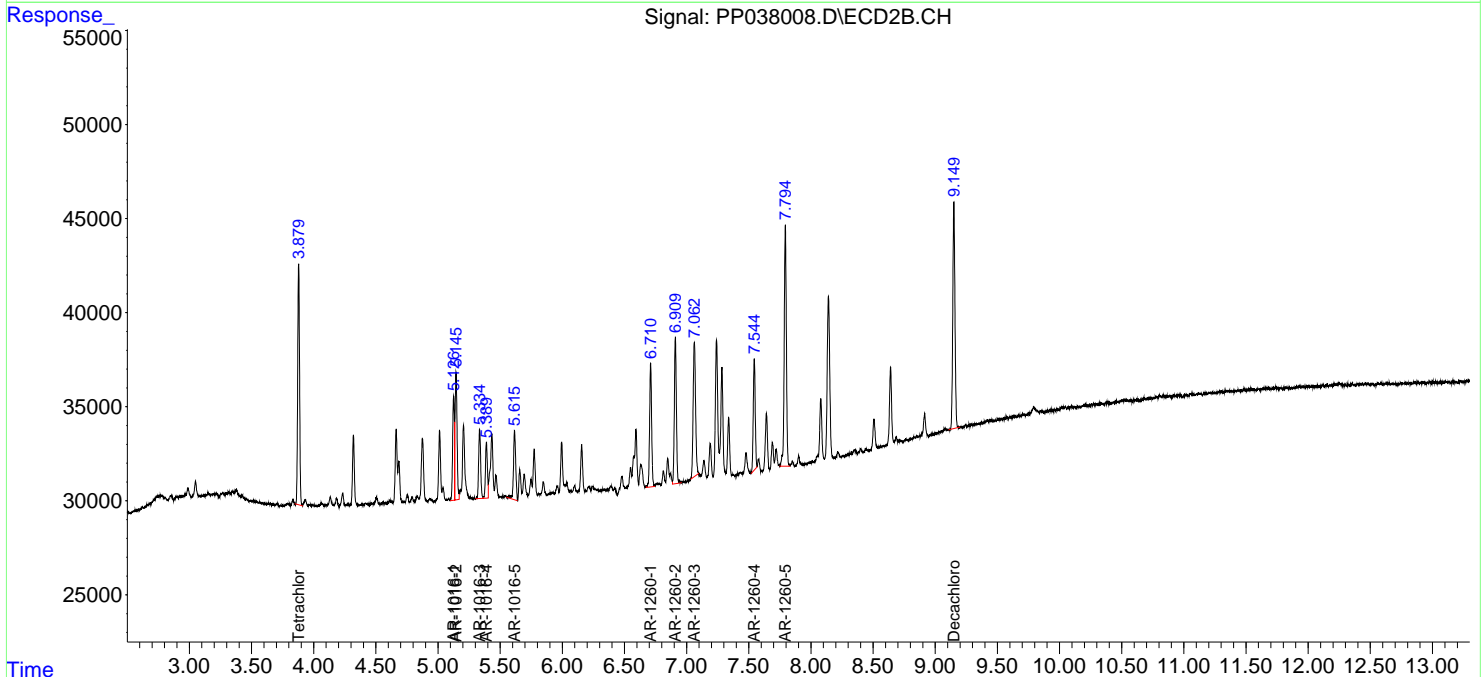
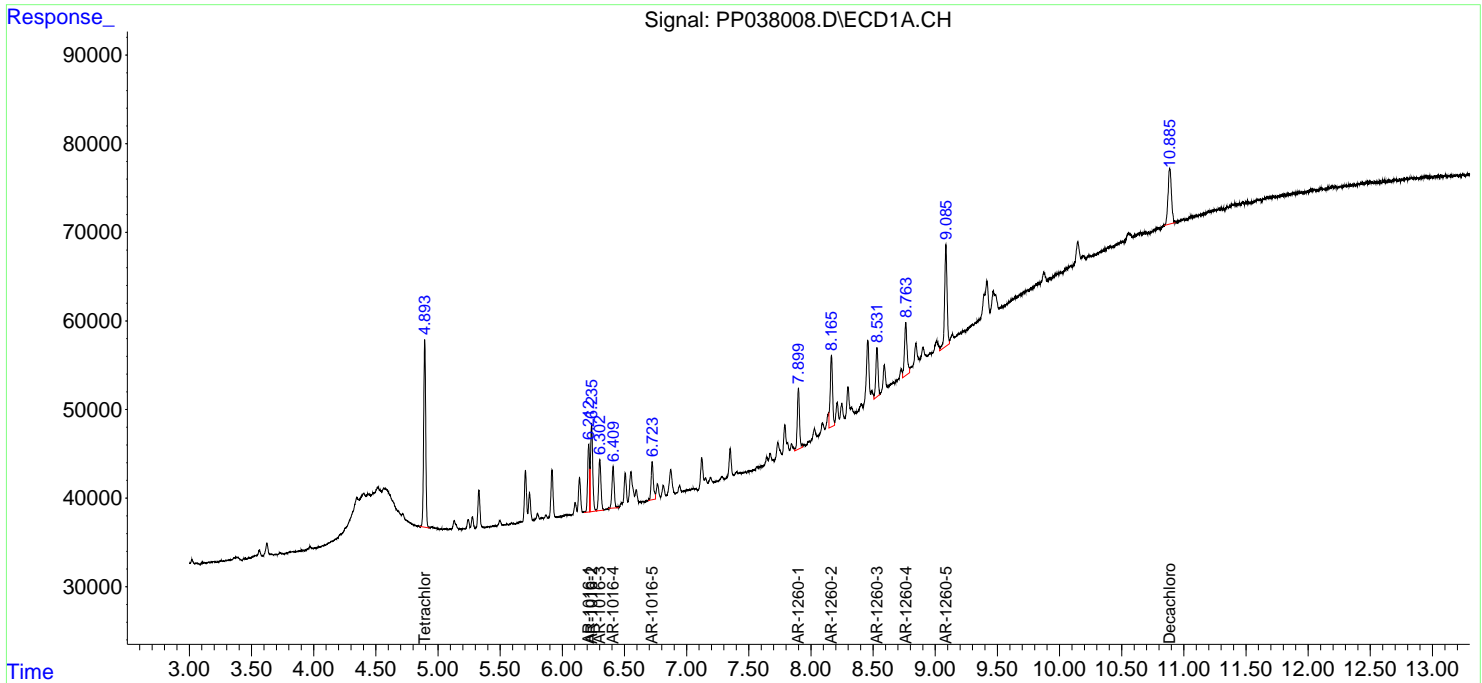
Data Path : Z:\pestpcbsrv\HPCHEM1\ECD_P\Data\PP080521\
 Data File : PP038008.D
 Signal(s) : Signal #1: ECD1A.CH Signal #2: ECD2B.CH
 Acq On : 05 Aug 2021 7:15
 Operator : AJ\MA
 Sample : AR1660ICC050
 Misc :
 ALS Vial : 7 Sample Multiplier: 1

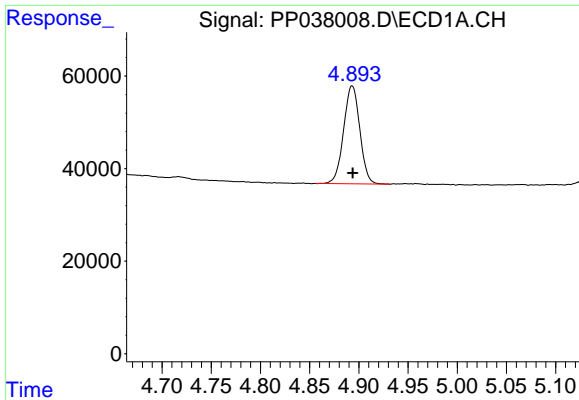
Instrument :
 ECD_P
Client Sampled :
 AR1660ICC050

Manual Integrations
APPROVED
 mohammad
 8/6/2021 3:06:07 PM

Integration File signal 1: autoint1.e
 Integration File signal 2: autoint2.e
 Quant Time: Aug 05 07:14:22 2021
 Quant Method : Z:\pestpcbsrv\HPCHEM1\ECD_P\methods\PP080521.M
 Quant Title : GC EXTRACTABLES
 QLast Update : Thu Aug 05 07:08:14 2021
 Response via : Initial Calibration
 Integrator: ChemStation 6890 Scale Mode: Small noise peaks clipped

Volume Inj. : 2 µl
 Signal #1 Phase : ZB-MR1 Signal #2 Phase: ZB-MR2
 Signal #1 Info : 30Mx0.32mmx 0.50µ Signal #2 Info : 30M x 0.32mm x 0.25µm

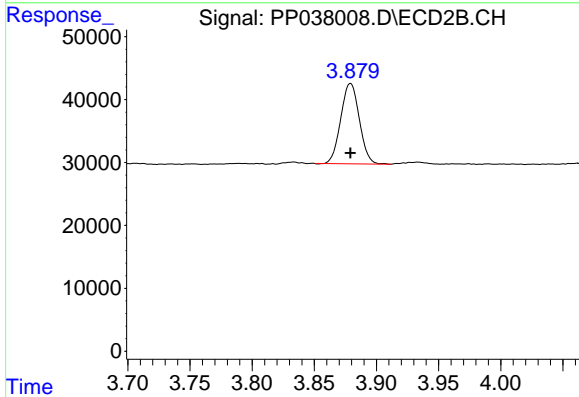




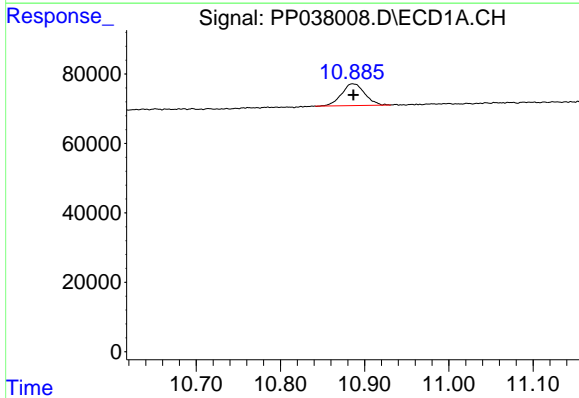
#1 Tetrachloro-m-xylene
 R.T.: 4.893 min
 Delta R.T.: 0.000 min
 Response: 243134
 Conc: 5.54 ng/ml

Instrument :
 ECD_P
ClientSampleId :
 AR1660ICC050

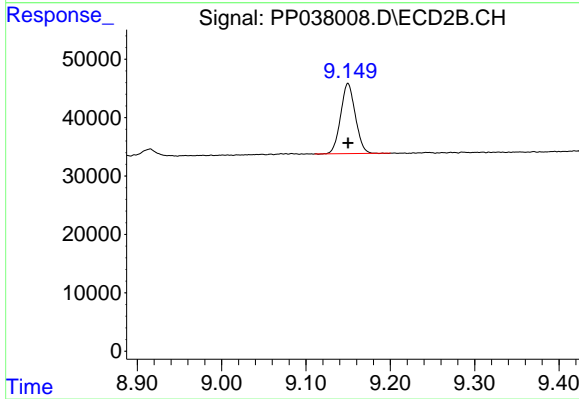
Manual Integrations
APPROVED
 mohammad
 8/6/2021 3:06:07 PM



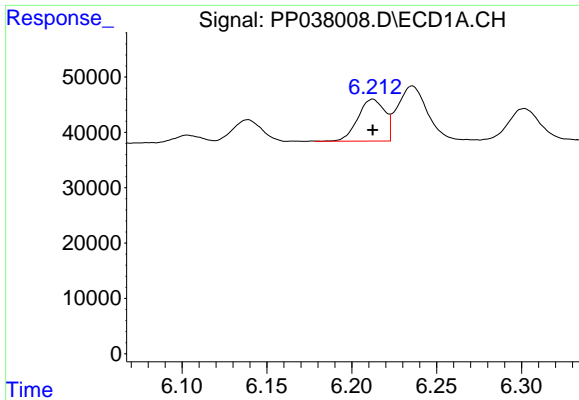
#1 Tetrachloro-m-xylene
 R.T.: 3.879 min
 Delta R.T.: 0.000 min
 Response: 133125
 Conc: 5.18 ng/ml



#2 Decachlorobiphenyl
 R.T.: 10.886 min
 Delta R.T.: 0.000 min
 Response: 118899
 Conc: 5.19 ng/ml



#2 Decachlorobiphenyl
 R.T.: 9.150 min
 Delta R.T.: 0.000 min
 Response: 144514
 Conc: 5.64 ng/ml



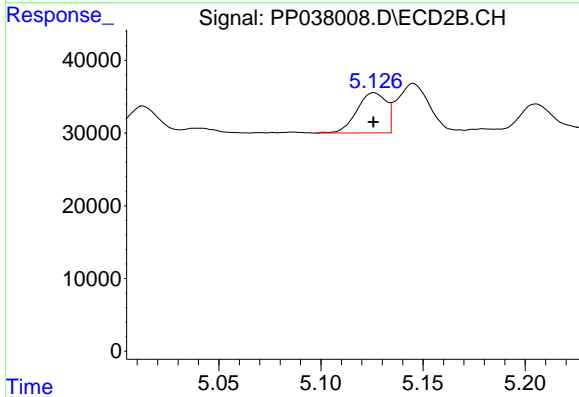
#3 AR-1016-1

R.T.: 6.212 min
 Delta R.T.: 0.000 min
 Response: 83107
 Conc: 56.92 ng/ml

Instrument :
 ECD_P
 ClientSampleId :
 AR1660ICC050

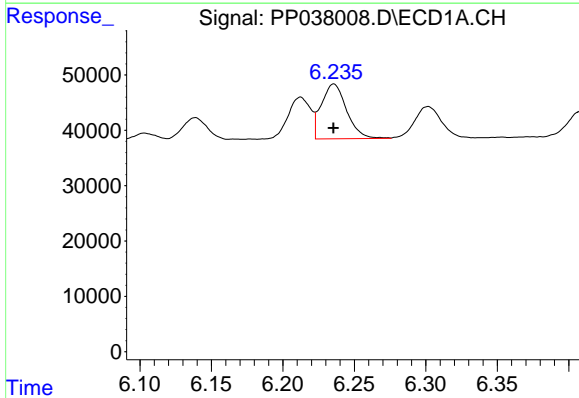
Manual Integrations
 APPROVED

mohammad
 8/6/2021 3:06:07 PM



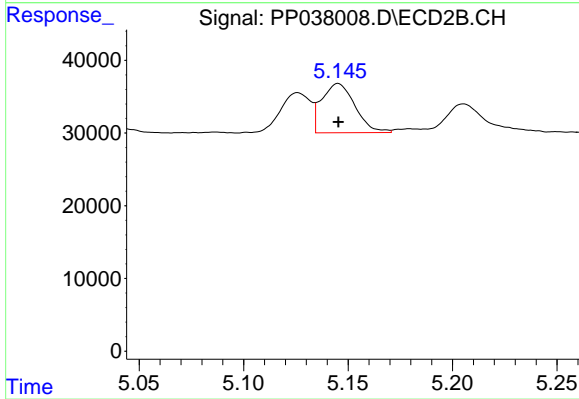
#3 AR-1016-1

R.T.: 5.126 min
 Delta R.T.: 0.000 min
 Response: 55448
 Conc: 58.91 ng/ml



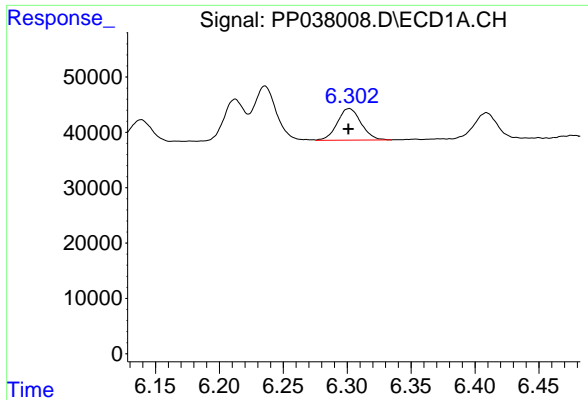
#4 AR-1016-2

R.T.: 6.236 min
 Delta R.T.: 0.000 min
 Response: 121655
 Conc: 58.34 ng/ml



#4 AR-1016-2

R.T.: 5.145 min
 Delta R.T.: 0.000 min
 Response: 75085
 Conc: 57.23 ng/ml



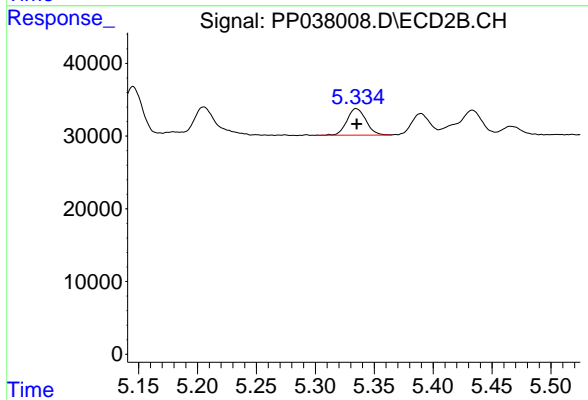
#5 AR-1016-3

R.T.: 6.301 min
 Delta R.T.: 0.000 min
 Response: 74014
 Conc: 56.31 ng/ml

Instrument :
 ECD_P
 ClientSampleId :
 AR1660ICC050

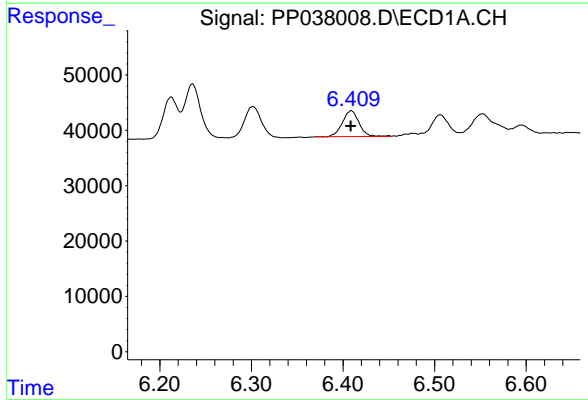
Manual Integrations
 APPROVED

mohammad
 8/6/2021 3:06:07 PM



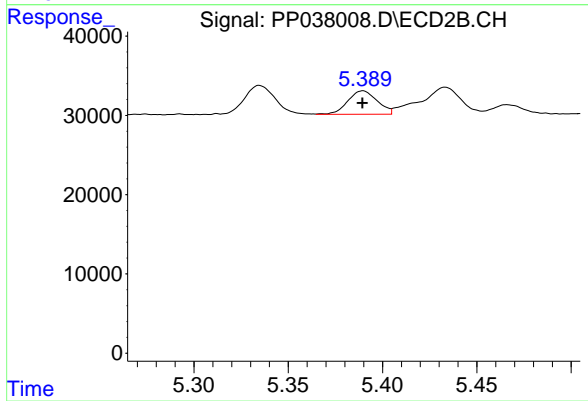
#5 AR-1016-3

R.T.: 5.335 min
 Delta R.T.: 0.000 min
 Response: 41374
 Conc: 56.89 ng/ml



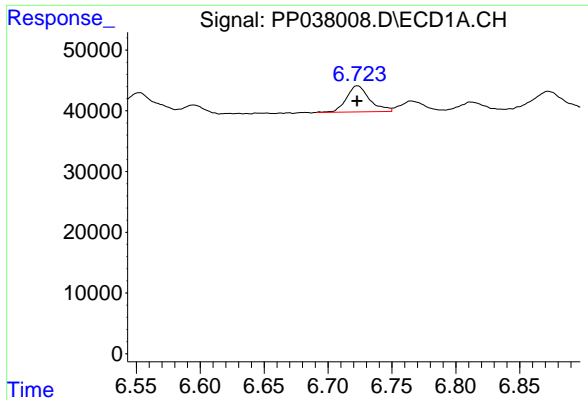
#6 AR-1016-4

R.T.: 6.409 min
 Delta R.T.: 0.000 min
 Response: 58964
 Conc: 54.29 ng/ml



#6 AR-1016-4

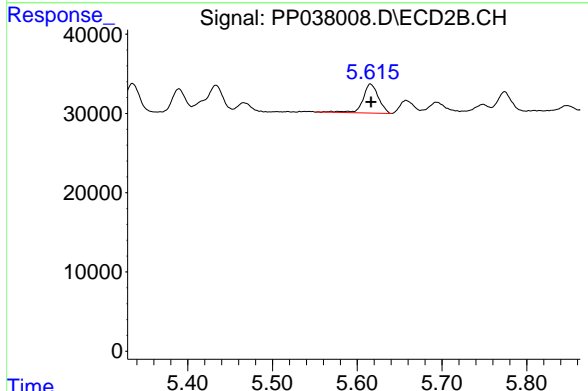
R.T.: 5.390 min
 Delta R.T.: 0.000 min
 Response: 32228
 Conc: 57.41 ng/ml



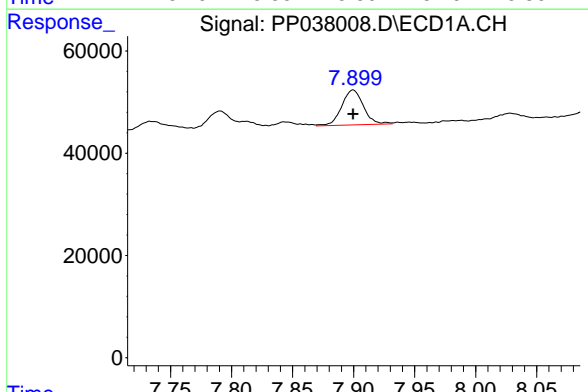
#7 AR-1016-5
 R.T.: 6.723 min
 Delta R.T.: 0.000 min
 Response: 54296
 Conc: 54.01 ng/ml

Instrument :
 ECD_P
ClientSampleId :
 AR1660ICC050

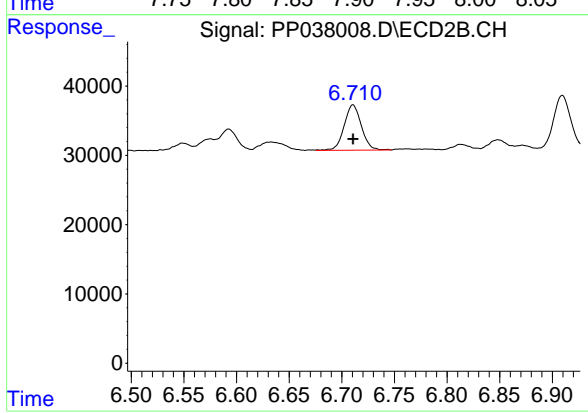
Manual Integrations
APPROVED
 mohammad
 8/6/2021 3:06:07 PM



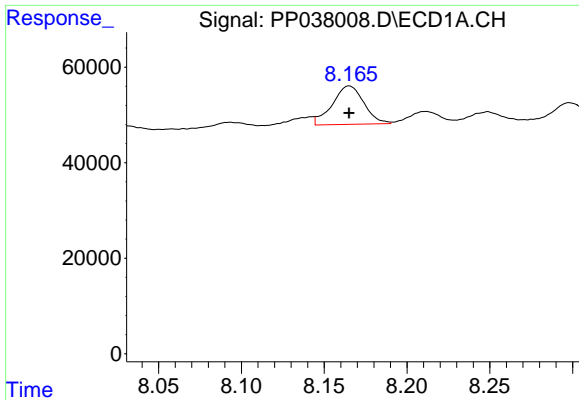
#7 AR-1016-5
 R.T.: 5.616 min
 Delta R.T.: 0.000 min
 Response: 46189
 Conc: 64.38 ng/ml



#31 AR-1260-1
 R.T.: 7.900 min
 Delta R.T.: 0.000 min
 Response: 84865
 Conc: 59.87 ng/ml



#31 AR-1260-1
 R.T.: 6.711 min
 Delta R.T.: 0.000 min
 Response: 74676
 Conc: 58.50 ng/ml

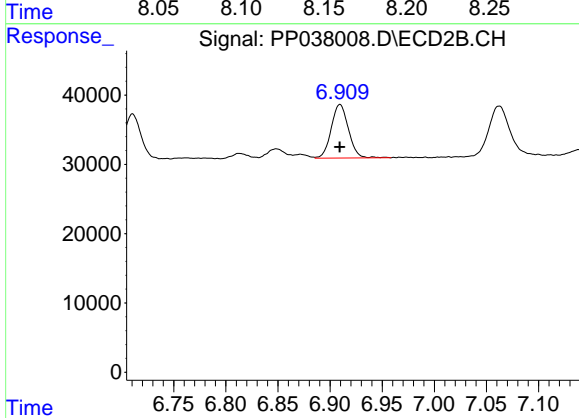


#32 AR-1260-2

R.T.: 8.165 min
 Delta R.T.: 0.000 min
 Response: 106292
 Conc: 64.51 ng/ml m

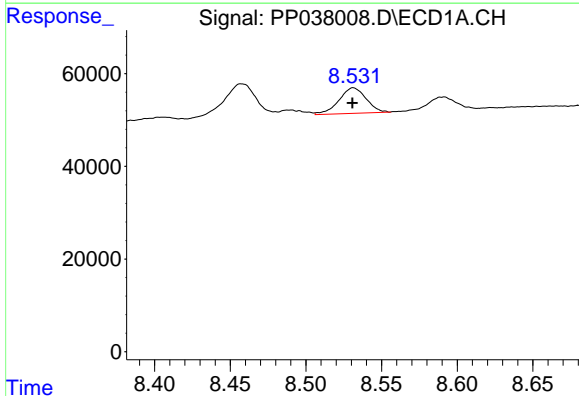
Instrument :
 ECD_P
ClientSampleId :
 AR1660ICC050

Manual Integrations
APPROVED
 mohammad
 8/6/2021 3:06:07 PM



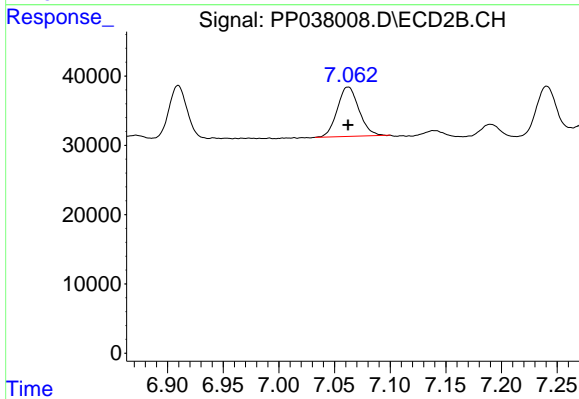
#32 AR-1260-2

R.T.: 6.910 min
 Delta R.T.: 0.000 min
 Response: 89182
 Conc: 58.56 ng/ml



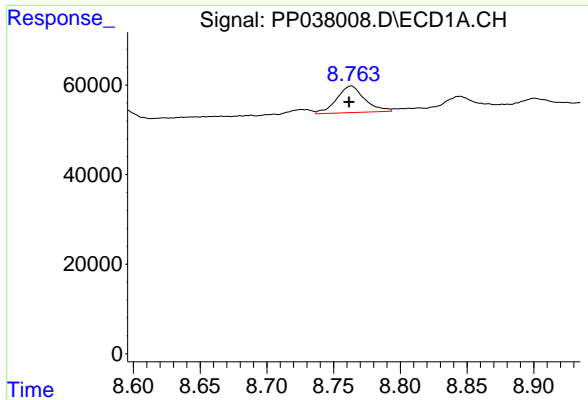
#33 AR-1260-3

R.T.: 8.531 min
 Delta R.T.: 0.000 min
 Response: 69083
 Conc: 59.33 ng/ml



#33 AR-1260-3

R.T.: 7.062 min
 Delta R.T.: 0.000 min
 Response: 96784
 Conc: 67.20 ng/ml

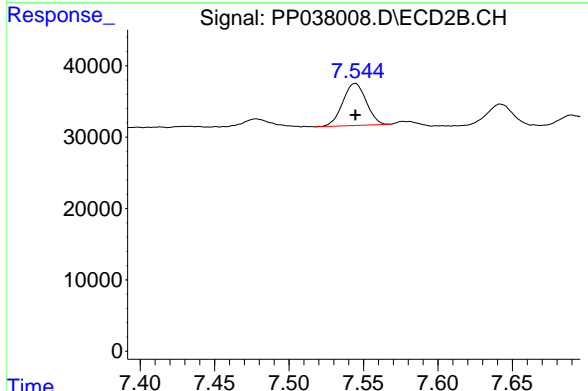


#34 AR-1260-4

R.T.: 8.763 min
 Delta R.T.: 0.002 min
 Response: 87213
 Conc: 63.91 ng/ml

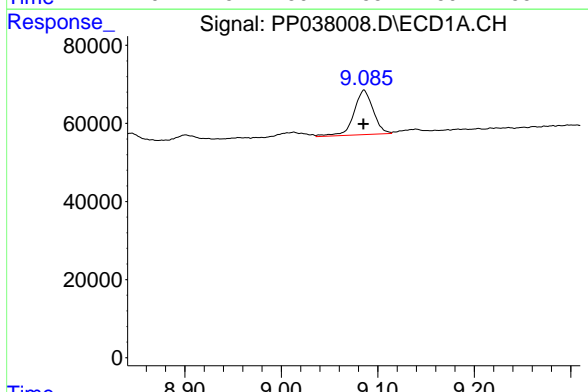
Instrument :
 ECD_P
ClientSampleId :
 AR1660ICC050

Manual Integrations
APPROVED
 mohammad
 8/6/2021 3:06:07 PM



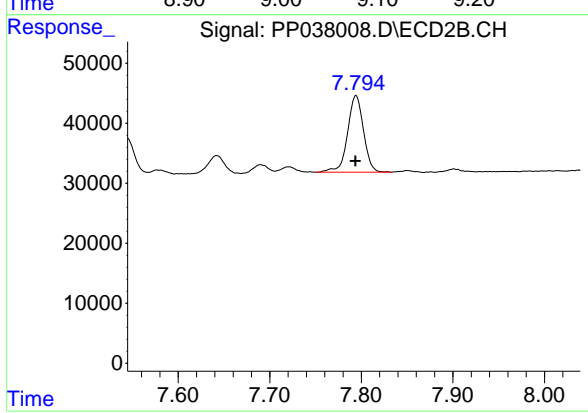
#34 AR-1260-4

R.T.: 7.544 min
 Delta R.T.: 0.000 min
 Response: 64801
 Conc: 52.79 ng/ml



#35 AR-1260-5

R.T.: 9.086 min
 Delta R.T.: 0.000 min
 Response: 157397
 Conc: 61.07 ng/ml



#35 AR-1260-5

R.T.: 7.794 min
 Delta R.T.: 0.000 min
 Response: 154687
 Conc: 53.08 ng/ml