

Data Path : Z:\pestpcbsrv\HPCHEM1\ECD_P\Data\PP080524\
 Data File : PP066568.D
 Signal(s) : Signal #1: ECD1A.ch Signal #2: ECD2B.ch
 Acq On : 05 Aug 2024 15:29
 Operator : YP\AJ
 Sample : AR1248ICC750
 Misc :
 ALS Vial : 16 Sample Multiplier: 1

Instrument :
 ECD_P
ClientSampleId :
 AR1248ICC750

Integration File signal 1: autoint1.e
 Integration File signal 2: autoint2.e
 Quant Time: Aug 06 02:18:15 2024
 Quant Method : Z:\pestpcbsrv\HPCHEM1\ECD_P\methods\PP080524.M
 Quant Title : GC EXTRACTABLES
 QLast Update : Tue Aug 06 02:13:22 2024
 Response via : Initial Calibration
 Integrator: ChemStation

Volume Inj. : 2 µl
 Signal #1 Phase : ZB-MR1 Signal #2 Phase: ZB-MR2
 Signal #1 Info : 30Mx0.32mmx 0.50µ Signal #2 Info : 30M x 0.32mm x 0.25µm

Compound	RT#1	RT#2	Resp#1	Resp#2	ng/ml	ng/ml

System Monitoring Compounds						
1) SA Tetrachlo...	4.780	4.019	149.6E6	162.5E6	73.078	73.807
2) SA Decachlor...	10.781	9.196	159.6E6	101.4E6	70.773	71.875
Target Compounds						
21) L5 AR-1248-1	5.961	5.133	33558830	28787886	673.980	712.698
22) L5 AR-1248-2	6.236	5.373	49093552	37787821	671.531	707.455
23) L5 AR-1248-3	6.443	5.417	53990341	39377244	681.263	710.453
24) L5 AR-1248-4	6.849	5.593	60923000	45260806	672.343	710.569
25) L5 AR-1248-5	6.889	5.993	60395606	42172998	673.684	714.611

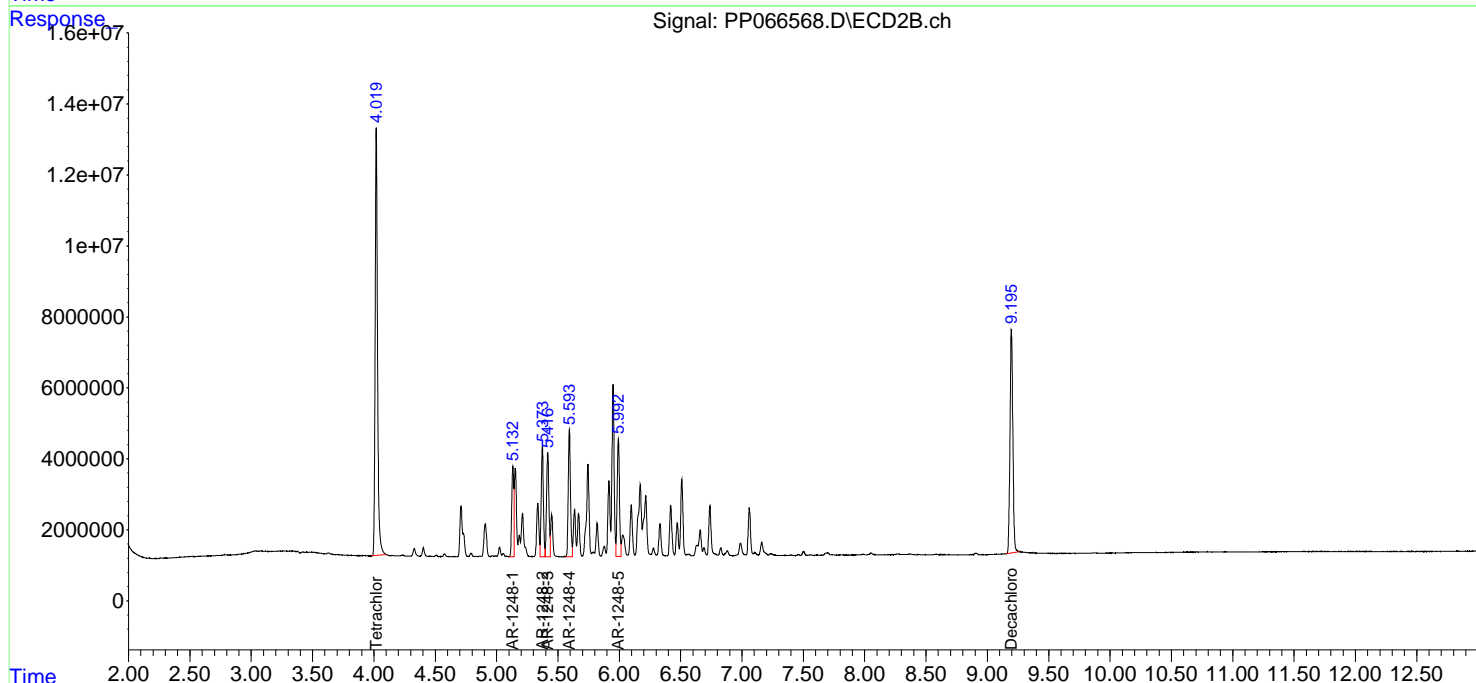
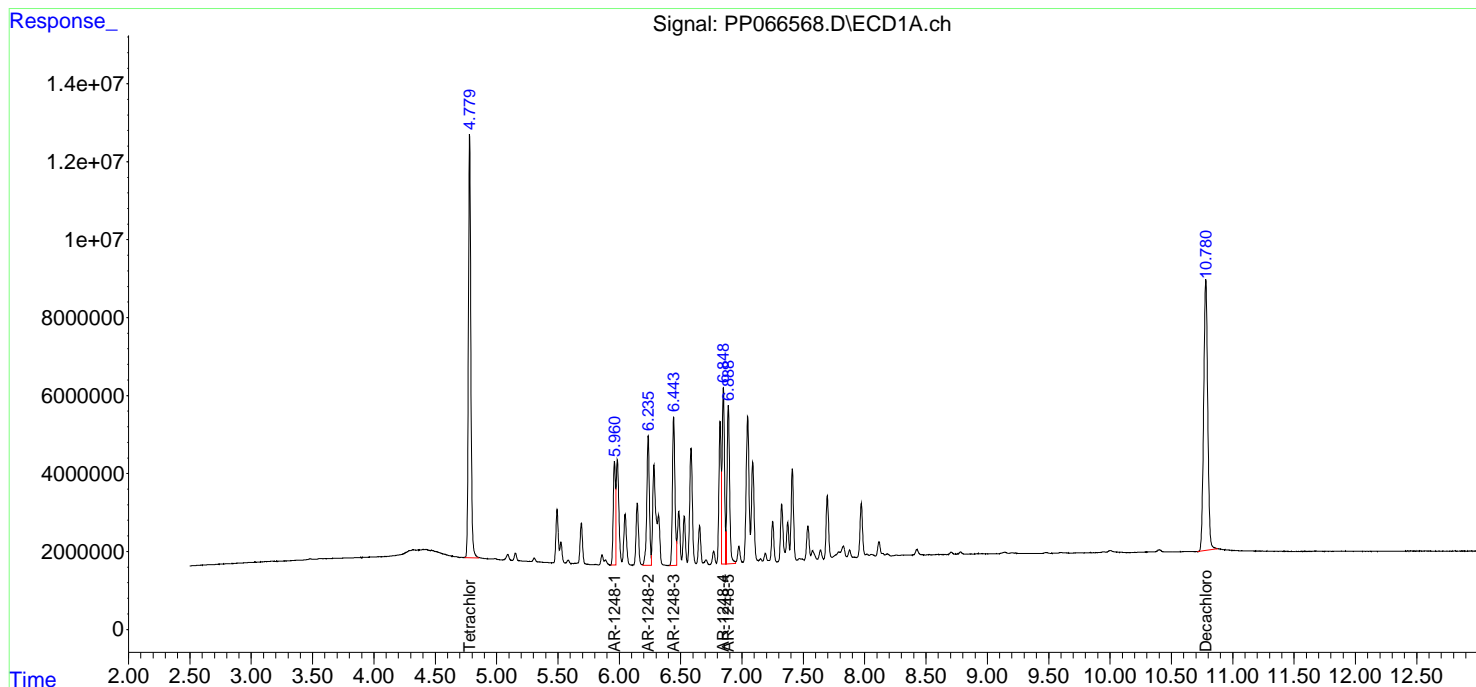
(f)=RT Delta > 1/2 Window (#)=Amounts differ by > 25% (m)=manual int.

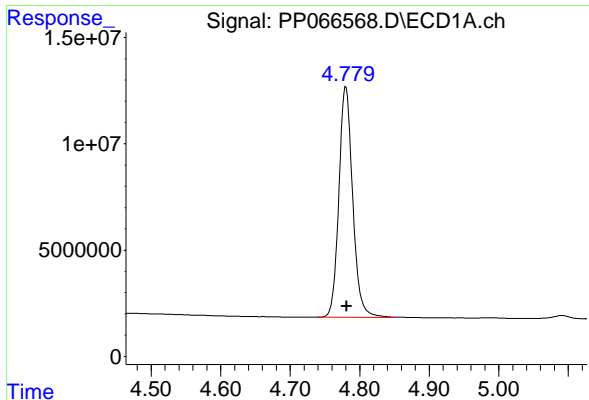
Data Path : Z:\pestpcbsrv\HPCHEM1\ECD_P\Data\PP080524\
 Data File : PP066568.D
 Signal(s) : Signal #1: ECD1A.ch Signal #2: ECD2B.ch
 Acq On : 05 Aug 2024 15:29
 Operator : YP\AJ
 Sample : AR1248ICC750
 Misc :
 ALS Vial : 16 Sample Multiplier: 1

Instrument :
 ECD_P
 ClientSampleId :
 AR1248ICC750

Integration File signal 1: autoint1.e
 Integration File signal 2: autoint2.e
 Quant Time: Aug 06 02:18:15 2024
 Quant Method : Z:\pestpcbsrv\HPCHEM1\ECD_P\methods\PP080524.M
 Quant Title : GC EXTRACTABLES
 QLast Update : Tue Aug 06 02:13:22 2024
 Response via : Initial Calibration
 Integrator: ChemStation

Volume Inj. : 2 µl
 Signal #1 Phase : ZB-MR1 Signal #2 Phase: ZB-MR2
 Signal #1 Info : 30Mx0.32mmx 0.50µm Signal #2 Info : 30M x 0.32mm x 0.25µm

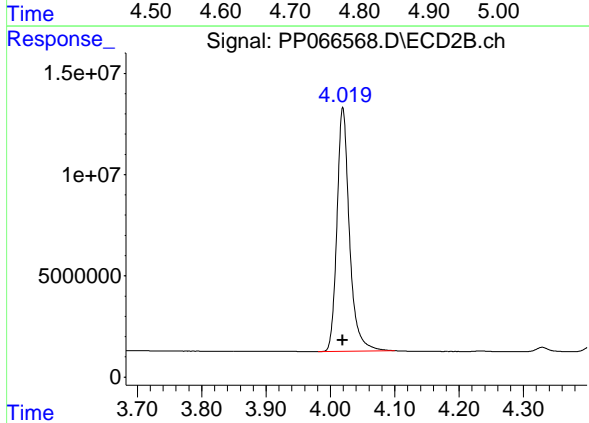




#1 Tetrachloro-m-xylene

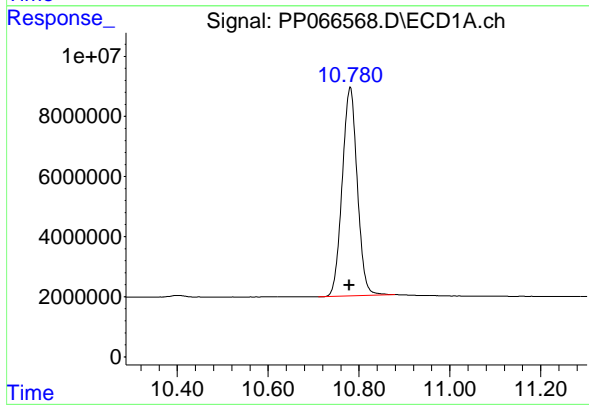
R.T.: 4.780 min
 Delta R.T.: 0.000 min
 Response: 149561287
 Conc: 73.08 ng/ml

Instrument : ECD_P
 ClientSampleId : AR1248ICC750



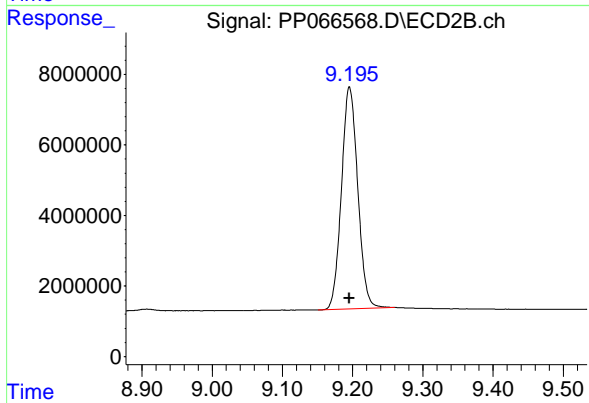
#1 Tetrachloro-m-xylene

R.T.: 4.019 min
 Delta R.T.: 0.000 min
 Response: 162546494
 Conc: 73.81 ng/ml



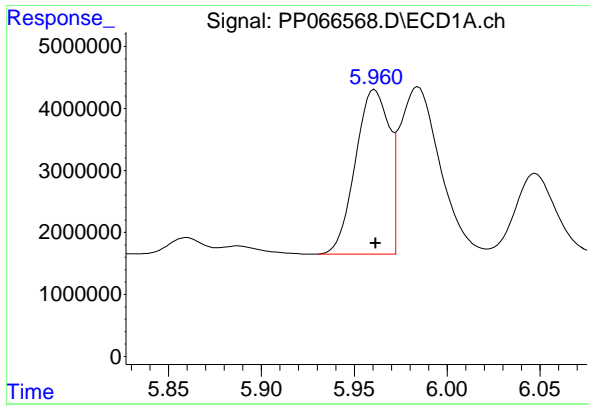
#2 Decachlorobiphenyl

R.T.: 10.781 min
 Delta R.T.: 0.002 min
 Response: 159618259
 Conc: 70.77 ng/ml



#2 Decachlorobiphenyl

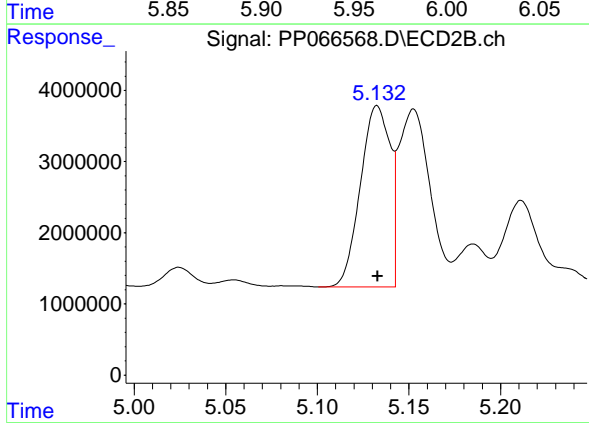
R.T.: 9.196 min
 Delta R.T.: 0.000 min
 Response: 101394343
 Conc: 71.88 ng/ml



#21 AR-1248-1

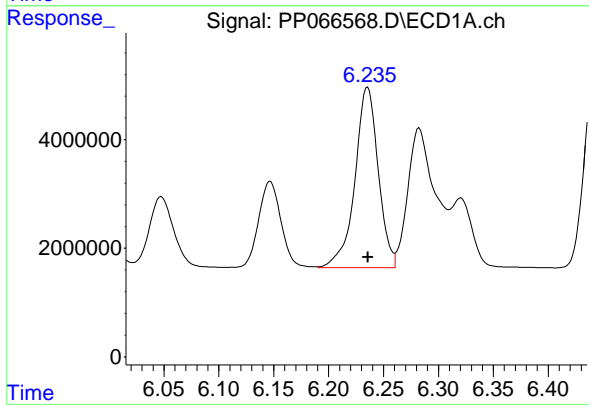
R.T.: 5.961 min
 Delta R.T.: 0.000 min
 Response: 33558830
 Conc: 673.98 ng/ml

Instrument :
 ECD_P
 ClientSampleId :
 AR1248ICC750



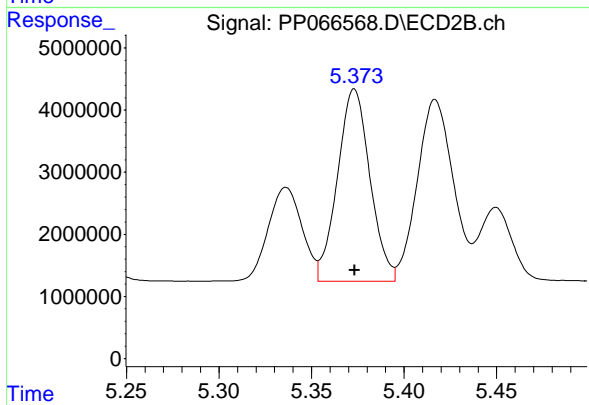
#21 AR-1248-1

R.T.: 5.133 min
 Delta R.T.: 0.000 min
 Response: 28787886
 Conc: 712.70 ng/ml



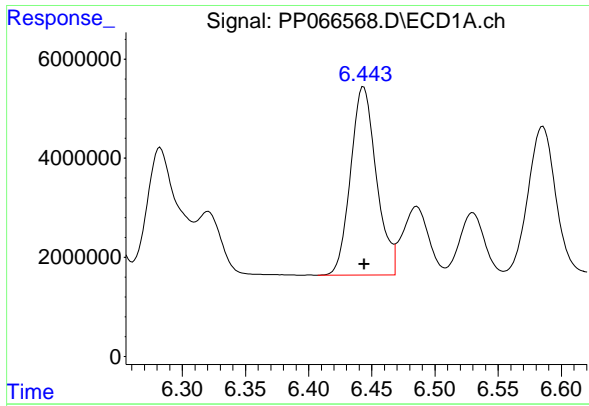
#22 AR-1248-2

R.T.: 6.236 min
 Delta R.T.: 0.000 min
 Response: 49093552
 Conc: 671.53 ng/ml



#22 AR-1248-2

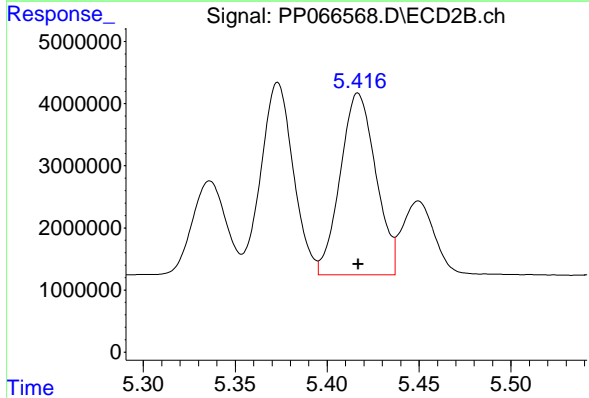
R.T.: 5.373 min
 Delta R.T.: 0.000 min
 Response: 37787821
 Conc: 707.45 ng/ml



#23 AR-1248-3

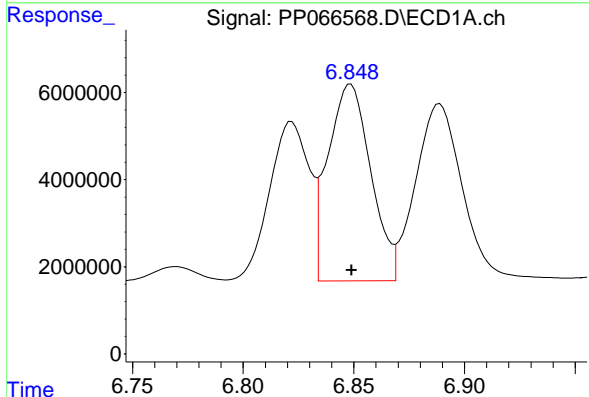
R.T.: 6.443 min
 Delta R.T.: 0.000 min
 Response: 53990341
 Conc: 681.26 ng/ml

Instrument :
 ECD_P
 ClientSampleId :
 AR1248ICC750



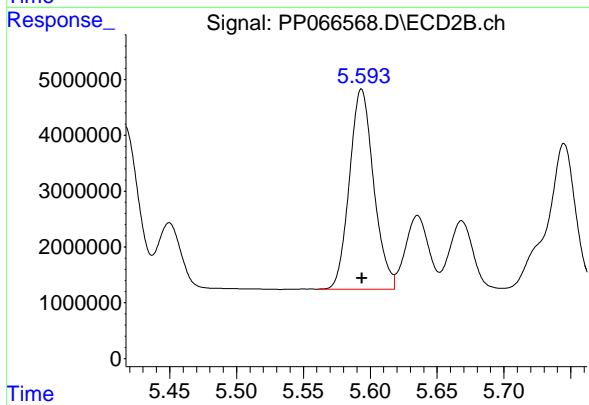
#23 AR-1248-3

R.T.: 5.417 min
 Delta R.T.: 0.000 min
 Response: 39377244
 Conc: 710.45 ng/ml



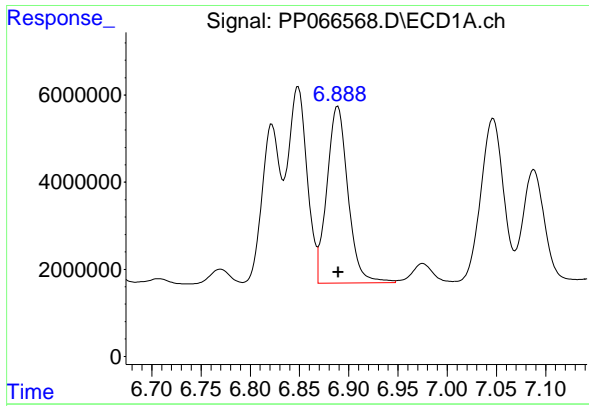
#24 AR-1248-4

R.T.: 6.849 min
 Delta R.T.: 0.000 min
 Response: 60923000
 Conc: 672.34 ng/ml



#24 AR-1248-4

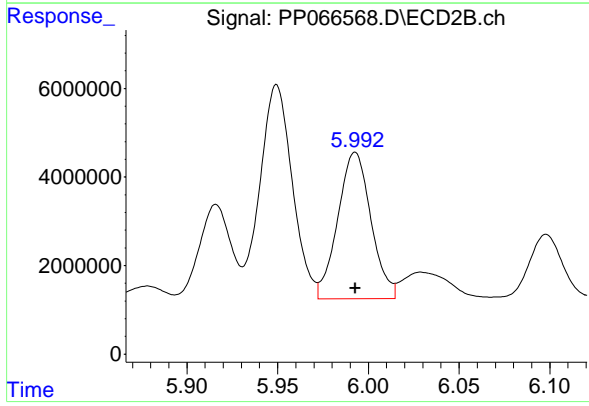
R.T.: 5.593 min
 Delta R.T.: 0.000 min
 Response: 45260806
 Conc: 710.57 ng/ml



#25 AR-1248-5

R.T.: 6.889 min
 Delta R.T.: 0.000 min
 Response: 60395606
 Conc: 673.68 ng/ml

Instrument :
 ECD_P
 ClientSampleId :
 AR1248ICC750



#25 AR-1248-5

R.T.: 5.993 min
 Delta R.T.: 0.000 min
 Response: 42172998
 Conc: 714.61 ng/ml