

Data Path : Z:\pestpcbsrv\HPCHEM1\ECD_P\Data\PP080524\
 Data File : PP066570.D
 Signal(s) : Signal #1: ECD1A.ch Signal #2: ECD2B.ch
 Acq On : 05 Aug 2024 16:02
 Operator : YP\AJ
 Sample : AR1248ICC250
 Misc :
 ALS Vial : 18 Sample Multiplier: 1

Instrument :
 ECD_P
ClientSampleId :
 AR1248ICC250

Integration File signal 1: autoint1.e
 Integration File signal 2: autoint2.e
 Quant Time: Aug 06 02:18:56 2024
 Quant Method : Z:\pestpcbsrv\HPCHEM1\ECD_P\methods\PP080524.M
 Quant Title : GC EXTRACTABLES
 QLast Update : Tue Aug 06 02:13:22 2024
 Response via : Initial Calibration
 Integrator: ChemStation

Volume Inj. : 2 µl
 Signal #1 Phase : ZB-MR1 Signal #2 Phase: ZB-MR2
 Signal #1 Info : 30Mx0.32mmx 0.50µ Signal #2 Info : 30M x 0.32mm x 0.25µm

Compound	RT#1	RT#2	Resp#1	Resp#2	ng/ml	ng/ml

System Monitoring Compounds						
1) SA Tetrachlo...	4.782	4.021	51186706	57017862	25.011	25.890
2) SA Decachlor...	10.778	9.195	58317448	37366061	25.857	26.488
Target Compounds						
21) L5 AR-1248-1	5.963	5.134	13018817	10968364	261.464	271.542
22) L5 AR-1248-2	6.237	5.374	19433889	14651261	265.828	274.298
23) L5 AR-1248-3	6.445	5.418	20618716	15145648	260.172	273.261
24) L5 AR-1248-4	6.850	5.595	24052594	17285890	265.443	271.379
25) L5 AR-1248-5	6.890	5.994	23968413	16208958	267.356	274.657

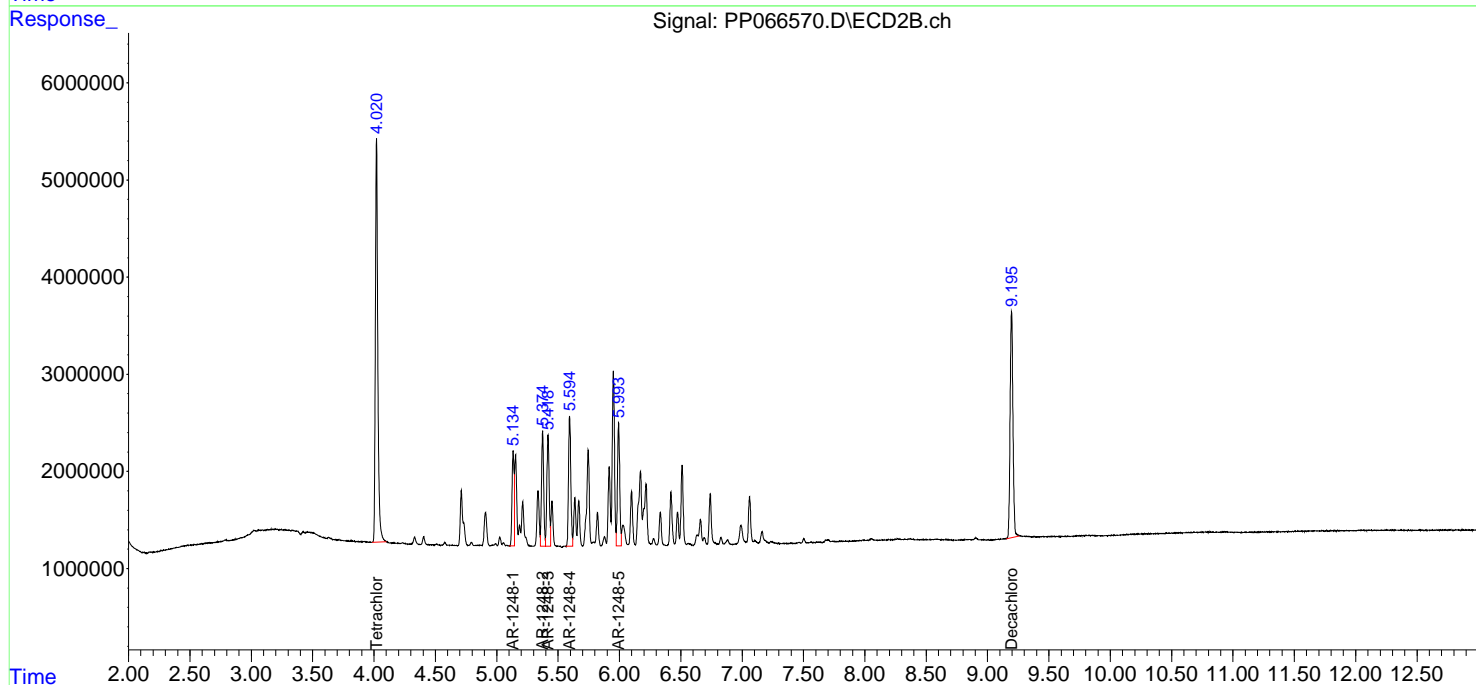
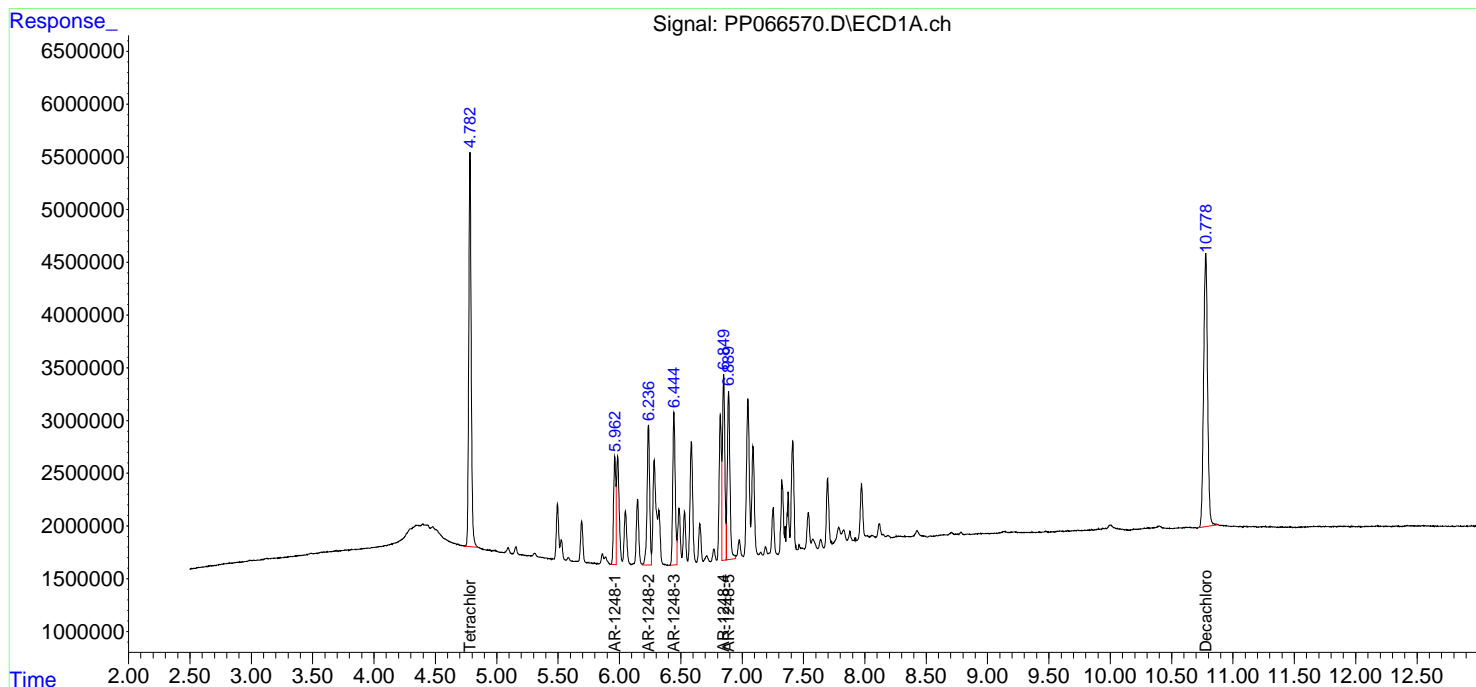
(f)=RT Delta > 1/2 Window (#)=Amounts differ by > 25% (m)=manual int.

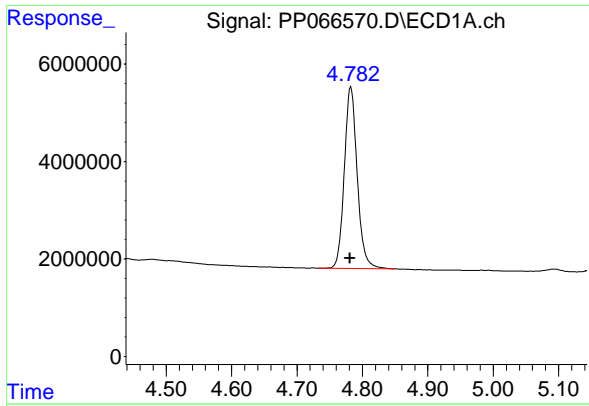
Data Path : Z:\pestpcbsrv\HPCHEM1\ECD_P\Data\PP080524\
 Data File : PP066570.D
 Signal(s) : Signal #1: ECD1A.ch Signal #2: ECD2B.ch
 Acq On : 05 Aug 2024 16:02
 Operator : YP\AJ
 Sample : AR1248ICC250
 Misc :
 ALS Vial : 18 Sample Multiplier: 1

Instrument :
 ECD_P
 ClientSampleId :
 AR1248ICC250

Integration File signal 1: autoint1.e
 Integration File signal 2: autoint2.e
 Quant Time: Aug 06 02:18:56 2024
 Quant Method : Z:\pestpcbsrv\HPCHEM1\ECD_P\methods\PP080524.M
 Quant Title : GC EXTRACTABLES
 QLast Update : Tue Aug 06 02:13:22 2024
 Response via : Initial Calibration
 Integrator: ChemStation

Volume Inj. : 2 µl
 Signal #1 Phase : ZB-MR1 Signal #2 Phase: ZB-MR2
 Signal #1 Info : 30Mx0.32mmx 0.50µ Signal #2 Info : 30M x 0.32mm x 0.25µm

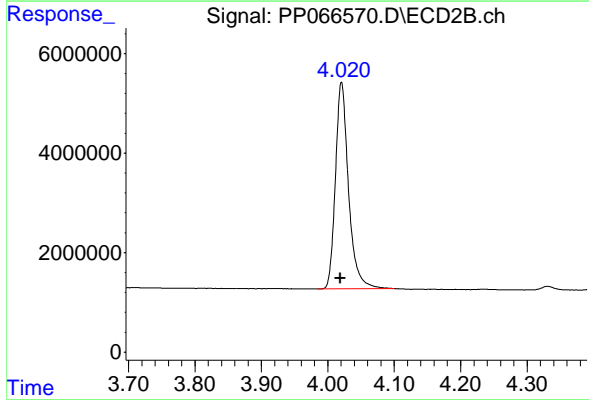




#1 Tetrachloro-m-xylene

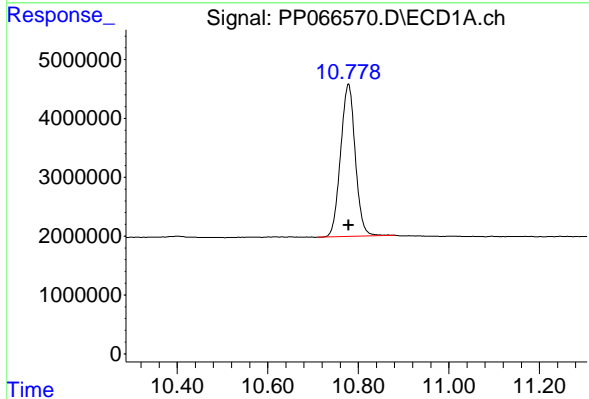
R.T.: 4.782 min
 Delta R.T.: 0.001 min
 Response: 51186706
 Conc: 25.01 ng/ml

Instrument :
 ECD_P
 ClientSampleId :
 AR1248ICC250



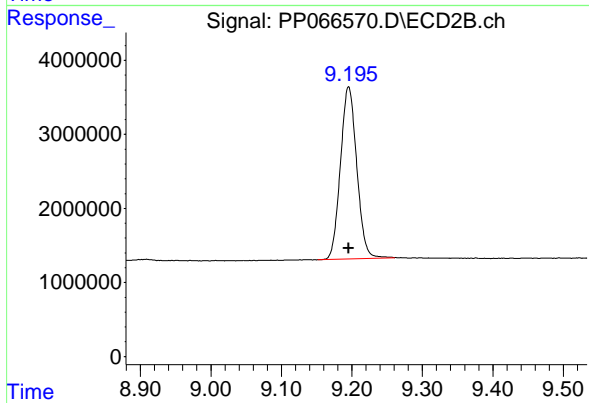
#1 Tetrachloro-m-xylene

R.T.: 4.021 min
 Delta R.T.: 0.001 min
 Response: 57017862
 Conc: 25.89 ng/ml



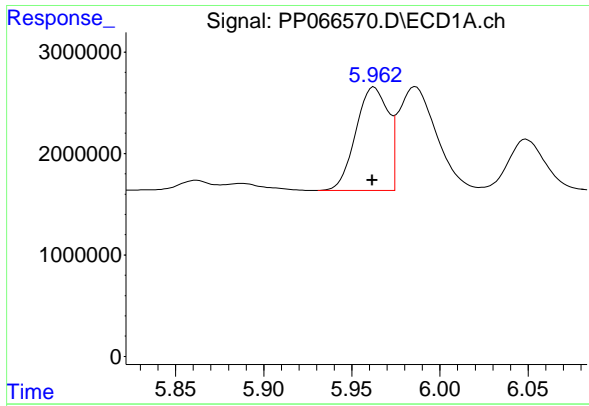
#2 Decachlorobiphenyl

R.T.: 10.778 min
 Delta R.T.: 0.000 min
 Response: 58317448
 Conc: 25.86 ng/ml



#2 Decachlorobiphenyl

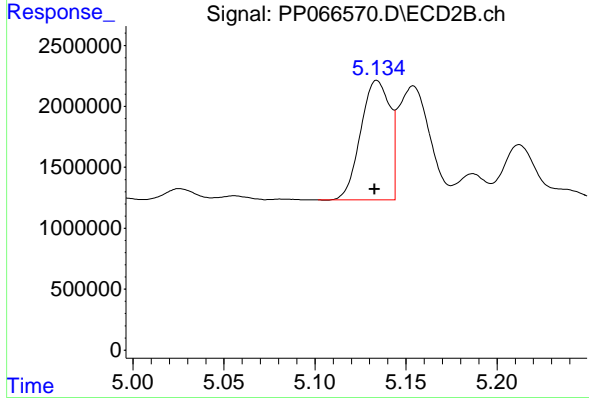
R.T.: 9.195 min
 Delta R.T.: 0.000 min
 Response: 37366061
 Conc: 26.49 ng/ml



#21 AR-1248-1

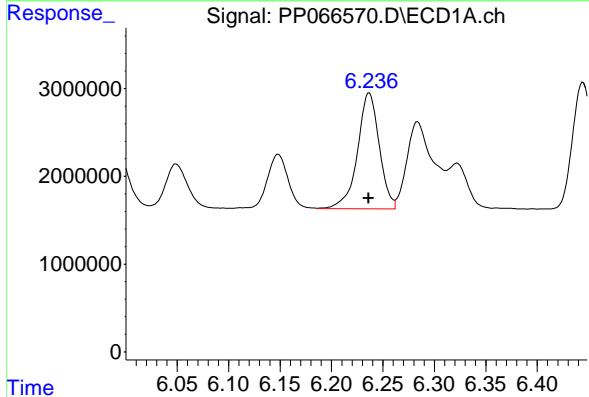
R.T.: 5.963 min
 Delta R.T.: 0.001 min
 Response: 13018817
 Conc: 261.46 ng/ml

Instrument :
 ECD_P
 ClientSampleId :
 AR1248ICC250



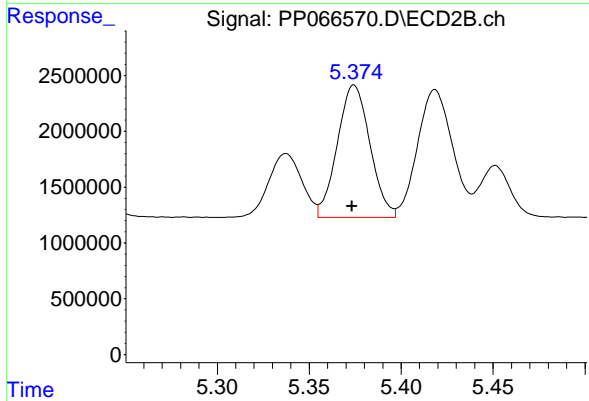
#21 AR-1248-1

R.T.: 5.134 min
 Delta R.T.: 0.001 min
 Response: 10968364
 Conc: 271.54 ng/ml



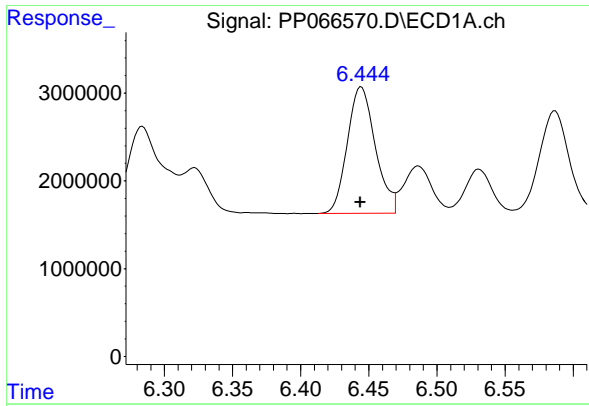
#22 AR-1248-2

R.T.: 6.237 min
 Delta R.T.: 0.000 min
 Response: 19433889
 Conc: 265.83 ng/ml



#22 AR-1248-2

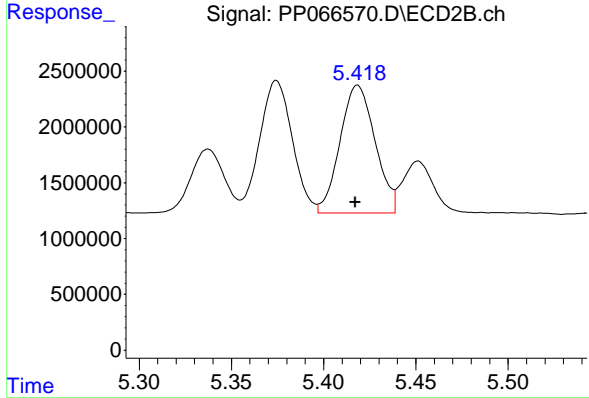
R.T.: 5.374 min
 Delta R.T.: 0.001 min
 Response: 14651261
 Conc: 274.30 ng/ml



#23 AR-1248-3

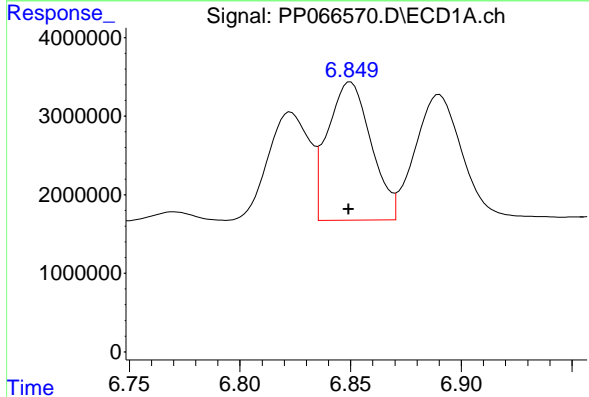
R.T.: 6.445 min
 Delta R.T.: 0.000 min
 Response: 20618716
 Conc: 260.17 ng/ml

Instrument :
 ECD_P
 ClientSampleId :
 AR1248ICC250



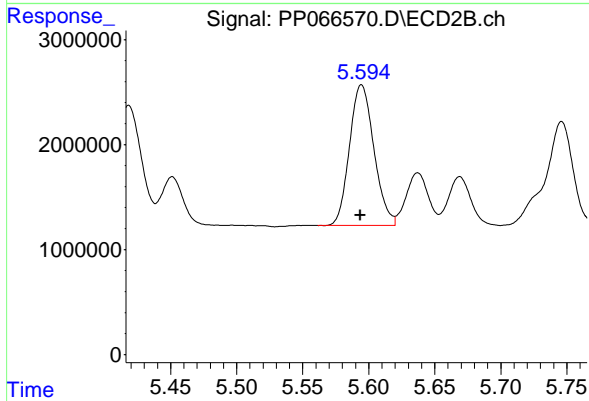
#23 AR-1248-3

R.T.: 5.418 min
 Delta R.T.: 0.001 min
 Response: 15145648
 Conc: 273.26 ng/ml



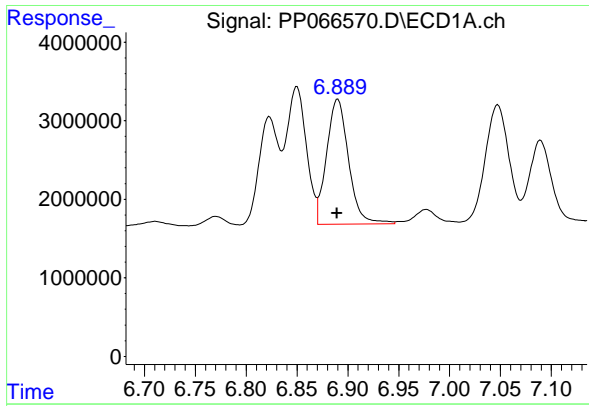
#24 AR-1248-4

R.T.: 6.850 min
 Delta R.T.: 0.000 min
 Response: 24052594
 Conc: 265.44 ng/ml



#24 AR-1248-4

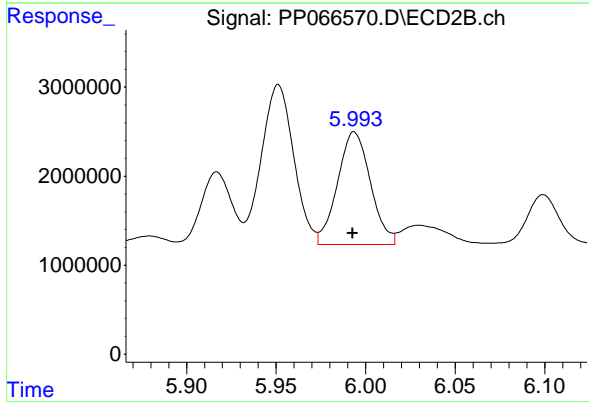
R.T.: 5.595 min
 Delta R.T.: 0.000 min
 Response: 17285890
 Conc: 271.38 ng/ml



#25 AR-1248-5

R.T.: 6.890 min
 Delta R.T.: 0.000 min
 Response: 23968413
 Conc: 267.36 ng/ml

Instrument :
 ECD_P
 ClientSampleId :
 AR1248ICC250



#25 AR-1248-5

R.T.: 5.994 min
 Delta R.T.: 0.000 min
 Response: 16208958
 Conc: 274.66 ng/ml