

Data Path : Z:\pestpcbsrv\HPCHEM1\ECD_P\Data\PP080524\
 Data File : PP066578.D
 Signal(s) : Signal #1: ECD1A.ch Signal #2: ECD2B.ch
 Acq On : 05 Aug 2024 18:15
 Operator : YP\AJ
 Sample : AR1268ICC1000
 Misc :
 ALS Vial : 26 Sample Multiplier: 1

Instrument :
 ECD_P
ClientSampleId :
 AR1268ICC1000

Manual Integrations
APPROVED

Reviewed By :Yogesh Patel 08/06/2024
 Supervised By :Ankita Jodhani 08/06/2024

Integration File signal 1: autoint1.e
 Integration File signal 2: autoint2.e
 Quant Time: Aug 06 02:59:12 2024
 Quant Method : Z:\pestpcbsrv\HPCHEM1\ECD_P\methods\PP080524.M
 Quant Title : GC EXTRACTABLES
 QLast Update : Tue Aug 06 02:54:37 2024
 Response via : Initial Calibration
 Integrator: ChemStation

Volume Inj. : 2 µl
 Signal #1 Phase : ZB-MR1 Signal #2 Phase: ZB-MR2
 Signal #1 Info : 30Mx0.32mmx 0.50µ Signal #2 Info : 30M x 0.32mm x 0.25µm

Compound	RT#1	RT#2	Resp#1	Resp#2	ng/ml	ng/ml

System Monitoring Compounds						
1) SA Tetrachlo...	4.782	4.021	195.4E6	202.3E6	97.420	94.975
2) SA Decachlor...	10.775	9.195	351.6E6	225.6E6	91.305	94.835
Target Compounds						
41) L9 AR-1268-1	9.120	7.988	289.0E6	229.1E6	927.290m	964.172m
42) L9 AR-1268-2	9.224	8.054	272.7E6	209.7E6	921.509	968.796
43) L9 AR-1268-3	9.475	8.271	245.4E6	180.2E6	921.468	965.865
44) L9 AR-1268-4	9.939	8.581	94034782	65770182	925.338	952.836
45) L9 AR-1268-5	10.398	8.907	754.0E6	501.6E6	941.448	983.754

(f)=RT Delta > 1/2 Window (#)=Amounts differ by > 25% (m)=manual int.

Data Path : Z:\pestpcbsrv\HPCHEM1\ECD_P\Data\PP080524\
 Data File : PP066578.D
 Signal(s) : Signal #1: ECD1A.ch Signal #2: ECD2B.ch
 Acq On : 05 Aug 2024 18:15
 Operator : YP\AJ
 Sample : AR1268ICC1000
 Misc :
 ALS Vial : 26 Sample Multiplier: 1

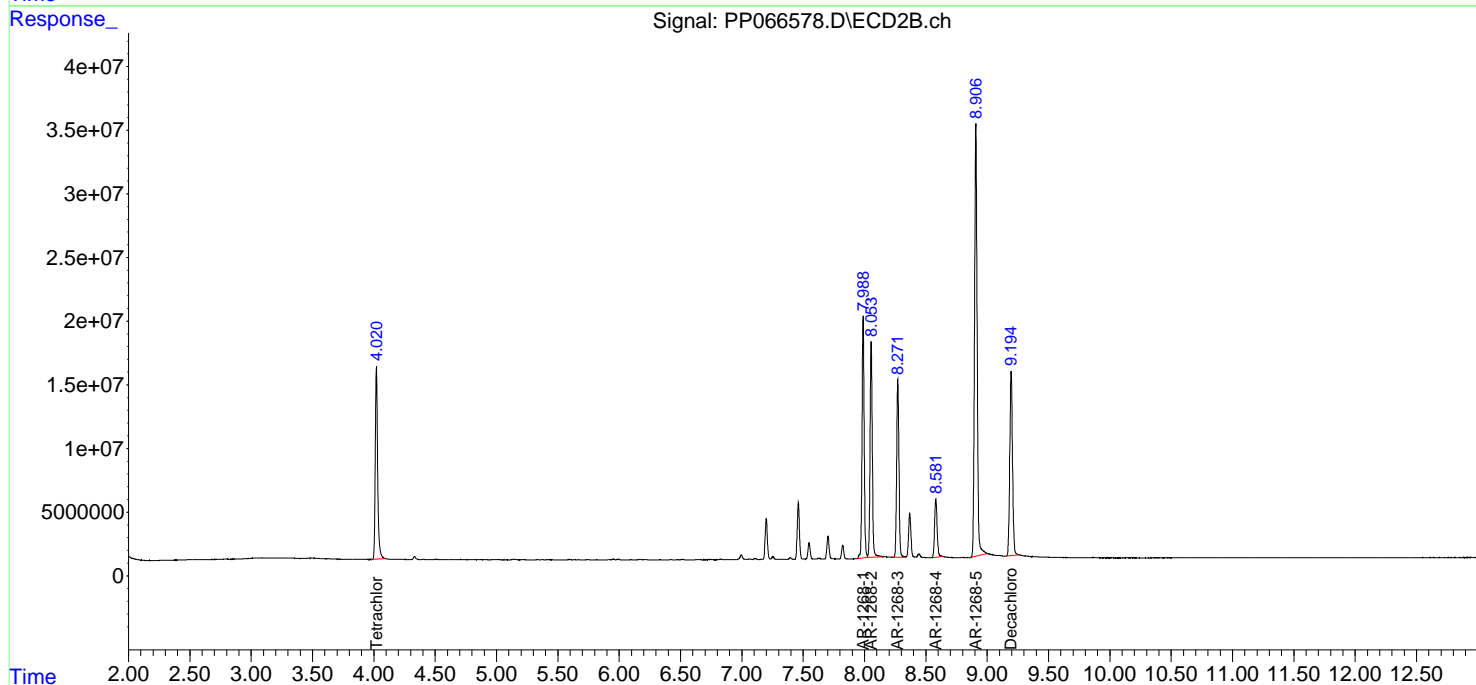
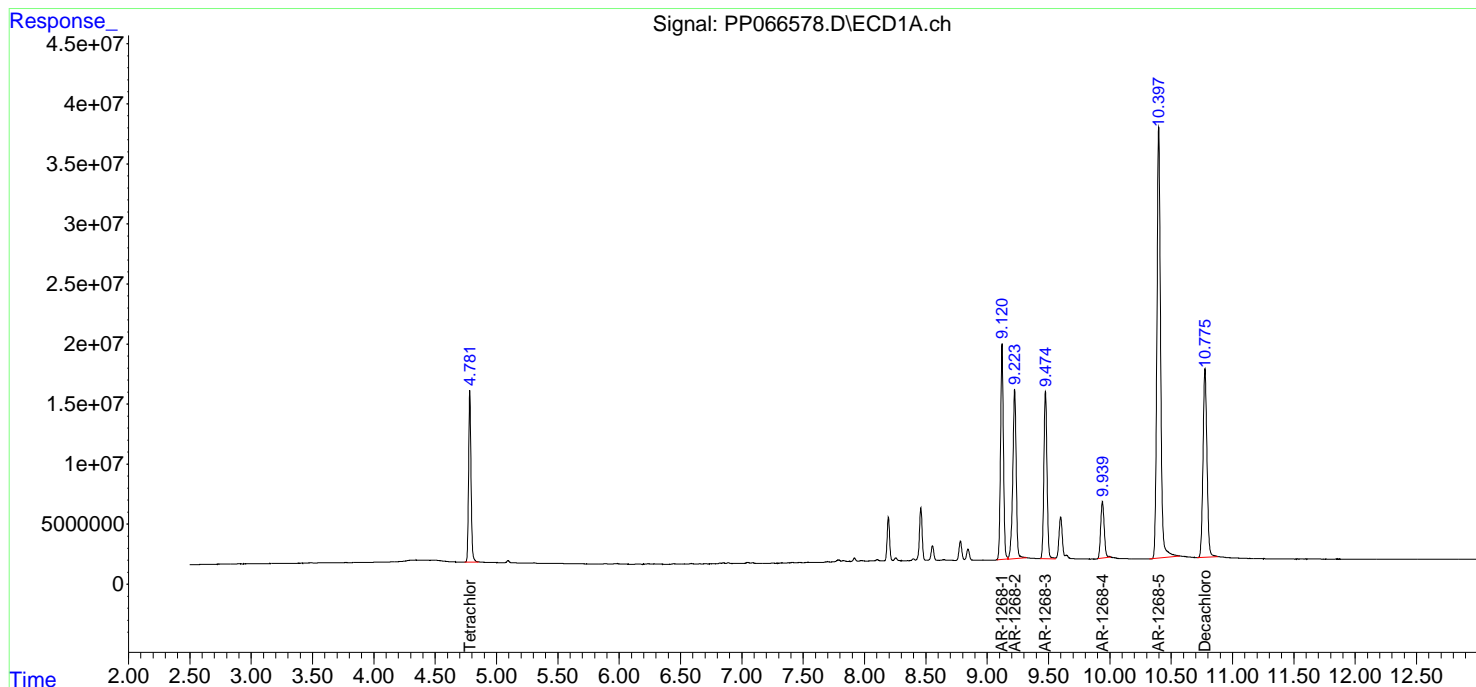
Instrument :
 ECD_P
 ClientSampleId :
 AR1268ICC1000

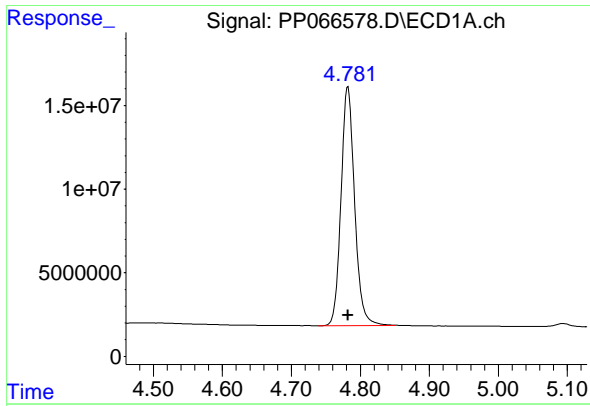
Manual Integrations
APPROVED

Reviewed By :Yogesh Patel 08/06/2024
 Supervised By :Ankita Jodhani 08/06/2024

Integration File signal 1: autoint1.e
 Integration File signal 2: autoint2.e
 Quant Time: Aug 06 02:59:12 2024
 Quant Method : Z:\pestpcbsrv\HPCHEM1\ECD_P\methods\PP080524.M
 Quant Title : GC EXTRACTABLES
 QLast Update : Tue Aug 06 02:54:37 2024
 Response via : Initial Calibration
 Integrator: ChemStation

Volume Inj. : 2 µl
 Signal #1 Phase : ZB-MR1 Signal #2 Phase: ZB-MR2
 Signal #1 Info : 30Mx0.32mmx 0.50µ Signal #2 Info : 30M x 0.32mm x 0.25µm





#1 Tetrachloro-m-xylene

R.T.: 4.782 min
 Delta R.T.: 0.000 min
 Response: 195404077
 Conc: 97.42 ng/ml

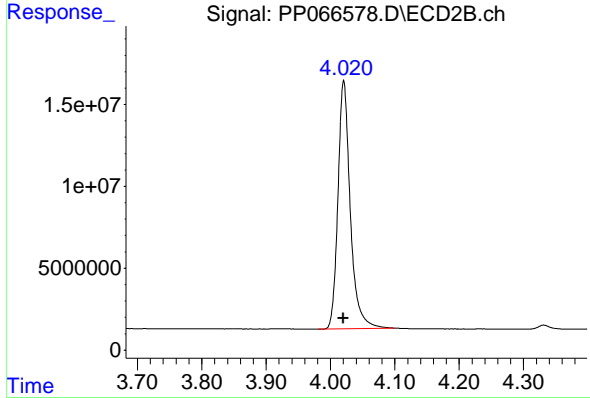
Instrument :

ECD_P

Client Sample Id :
 AR1268ICC1000

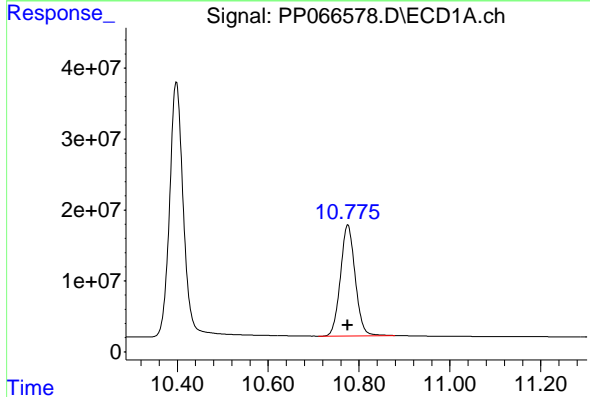
Manual Integrations
 APPROVED

Reviewed By :Yogesh Patel 08/06/2024
 Supervised By :Ankita Jodhani 08/06/2024



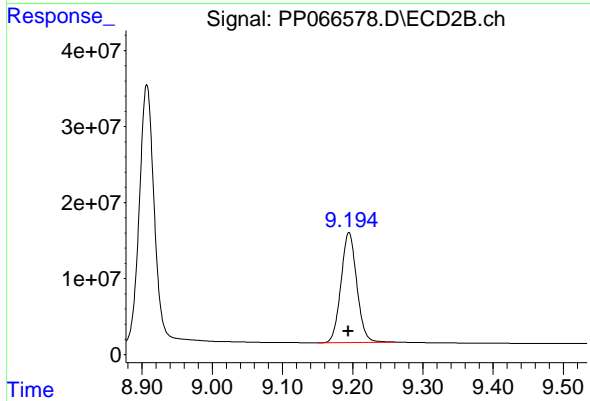
#1 Tetrachloro-m-xylene

R.T.: 4.021 min
 Delta R.T.: 0.000 min
 Response: 202293676
 Conc: 94.97 ng/ml



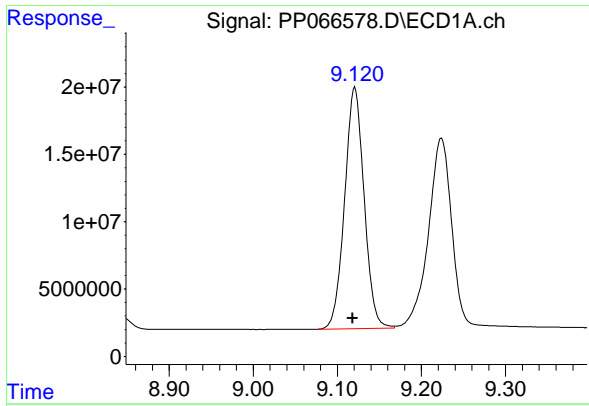
#2 Decachlorobiphenyl

R.T.: 10.775 min
 Delta R.T.: 0.000 min
 Response: 351602284
 Conc: 91.30 ng/ml



#2 Decachlorobiphenyl

R.T.: 9.195 min
 Delta R.T.: 0.000 min
 Response: 225561828
 Conc: 94.84 ng/ml



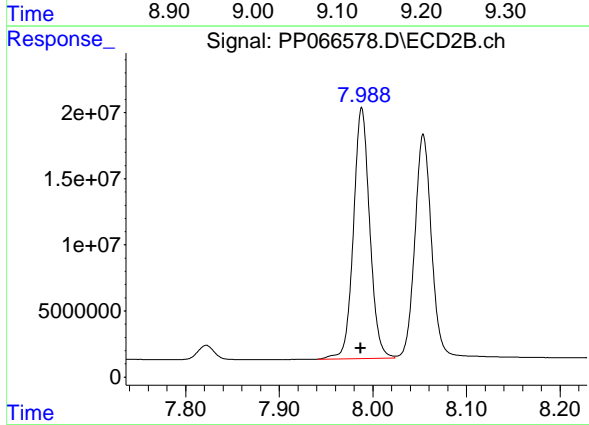
#41 AR-1268-1

R.T.: 9.120 min
 Delta R.T.: 0.002 min
 Response: 288964508
 Conc: 927.29 ng/ml

Instrument : ECD_P
 Client Sample Id : AR1268ICC1000

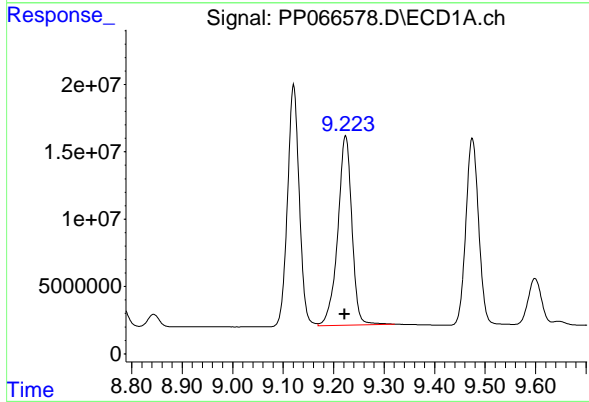
Manual Integrations
 APPROVED

Reviewed By :Yogesh Patel 08/06/2024
 Supervised By :Ankita Jodhani 08/06/2024



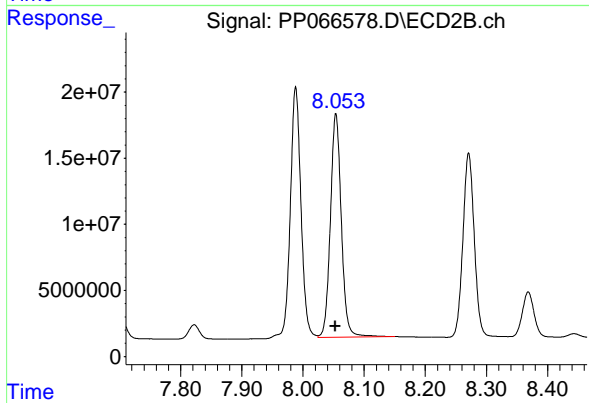
#41 AR-1268-1

R.T.: 7.988 min
 Delta R.T.: 0.000 min
 Response: 229143556
 Conc: 964.17 ng/ml m



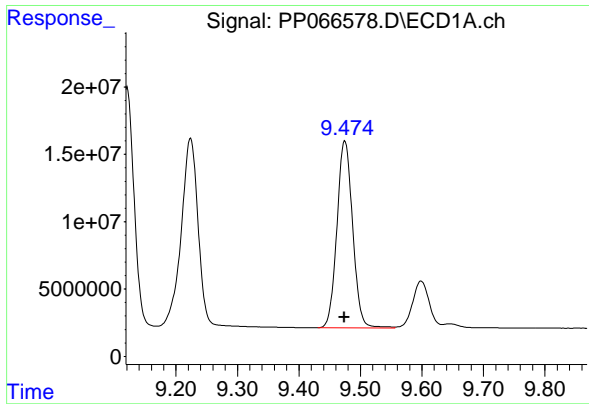
#42 AR-1268-2

R.T.: 9.224 min
 Delta R.T.: 0.002 min
 Response: 272690214
 Conc: 921.51 ng/ml



#42 AR-1268-2

R.T.: 8.054 min
 Delta R.T.: 0.000 min
 Response: 209728146
 Conc: 968.80 ng/ml



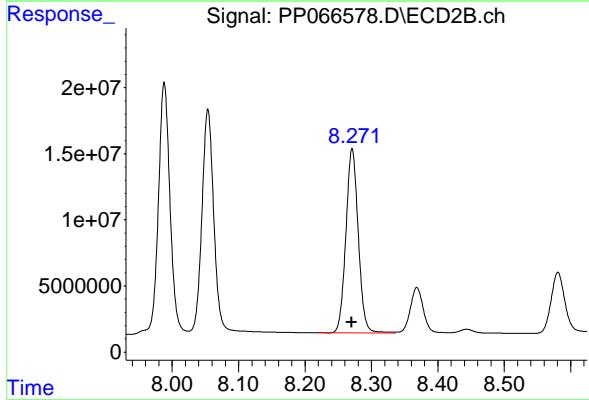
#43 AR-1268-3

R.T.: 9.475 min
 Delta R.T.: 0.000 min
 Response: 245414288
 Conc: 921.47 ng/ml

Instrument :
 ECD_P
 Client Sample Id :
 AR1268ICC1000

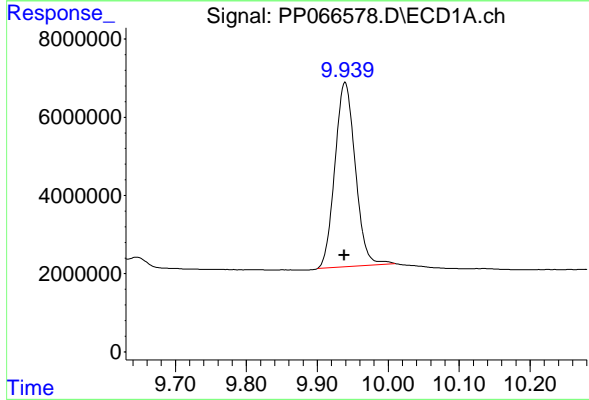
Manual Integrations
 APPROVED

Reviewed By :Yogesh Patel 08/06/2024
 Supervised By :Ankita Jodhani 08/06/2024



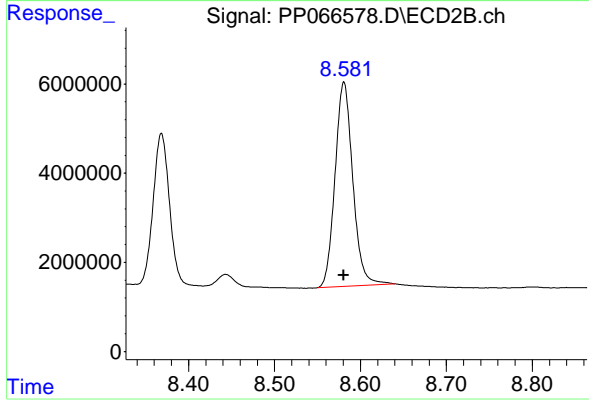
#43 AR-1268-3

R.T.: 8.271 min
 Delta R.T.: 0.000 min
 Response: 180182769
 Conc: 965.86 ng/ml



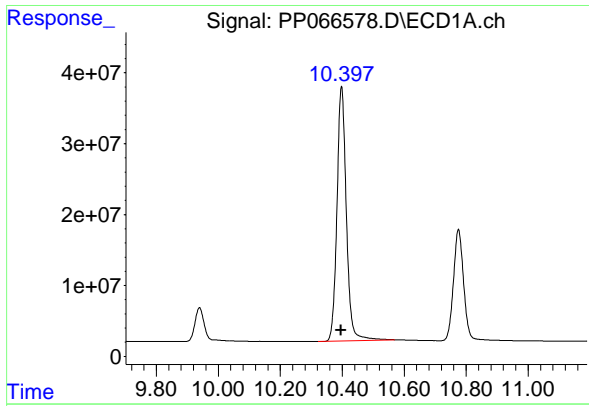
#44 AR-1268-4

R.T.: 9.939 min
 Delta R.T.: 0.001 min
 Response: 94034782
 Conc: 925.34 ng/ml



#44 AR-1268-4

R.T.: 8.581 min
 Delta R.T.: 0.000 min
 Response: 65770182
 Conc: 952.84 ng/ml



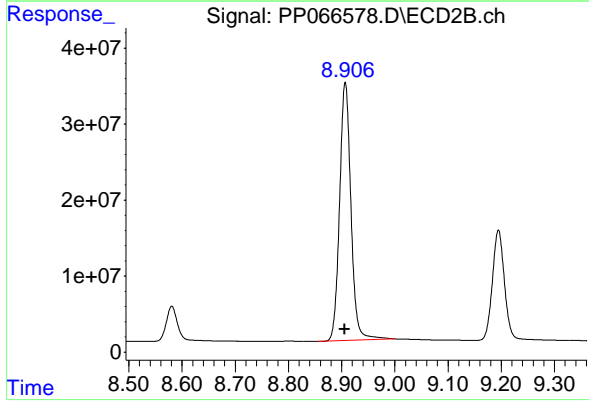
#45 AR-1268-5

R.T.: 10.398 min
 Delta R.T.: 0.002 min
 Response: 753962404
 Conc: 941.45 ng/ml

Instrument :
 ECD_P
 ClientSampleId :
 AR1268ICC1000

Manual Integrations
 APPROVED

Reviewed By :Yogesh Patel 08/06/2024
 Supervised By :Ankita Jodhani 08/06/2024



#45 AR-1268-5

R.T.: 8.907 min
 Delta R.T.: 0.001 min
 Response: 501623892
 Conc: 983.75 ng/ml