

Data Path : Z:\pestpcbsrv\HPCHEM1\ECD\_P\Data\PP080621\  
 Data File : PP038075.D  
 Signal(s) : Signal #1: ECD1A.CH Signal #2: ECD2B.CH  
 Acq On : 06 Aug 2021 14:18  
 Operator : AJ\MA  
 Sample : AR1242CCC500  
 Misc :  
 ALS Vial : 4 Sample Multiplier: 1

Instrument :  
 ECD\_P  
 ClientSampled :  
 AR1242CCC500

Integration File signal 1: autoint1.e  
 Integration File signal 2: autoint2.e  
 Quant Time: Aug 06 15:36:29 2021  
 Quant Method : Z:\pestpcbsrv\HPCHEM1\ECD\_P\methods\PP080521.M  
 Quant Title : GC EXTRACTABLES  
 QLast Update : Fri Aug 06 03:08:47 2021  
 Response via : Initial Calibration  
 Integrator: ChemStation 6890 Scale Mode: Small noise peaks clipped

Volume Inj. : 2 µl  
 Signal #1 Phase : ZB-MR1 Signal #2 Phase: ZB-MR2  
 Signal #1 Info : 30Mx0.32mmx 0.50µ Signal #2 Info : 30M x 0.32mm x 0.25µm

Compound	RT#1	RT#2	Resp#1	Resp#2	ng/ml	ng/ml
System Monitoring Compounds						
1) SA Tetrachlo...	4.898	3.881	2175607	1322770	48.955	51.359
2) SA Decachlor...	10.890	9.150	1108532	1112905	48.730	43.014
Target Compounds						
3) L1 AR-1016-1	6.215	5.126	542455	349104	365.267	361.430
4) L1 AR-1016-2	6.239	5.146	761507	490901	357.562	366.428
5) L1 AR-1016-3	6.305	5.336	487446	269533	366.804	366.349
6) L1 AR-1016-4	6.412	5.390	397425	196864	366.047	346.566
7) L1 AR-1016-5	6.726	5.616	370836	273591	369.790	356.549
8) L2 AR-1221-1	5.145	4.134	67265	40372	124.097	134.209
9) L2 AR-1221-2	5.247	4.233	88371	60866	218.677	258.611
10) L2 AR-1221-3	5.333	4.321	344229	214522	285.752	290.909
11) L3 AR-1232-1	5.333	4.321	344229	214522	311.238	316.446
12) L3 AR-1232-2	5.921	5.146	420733	490901	771.131	806.237
13) L3 AR-1232-3	6.239	5.336	761507	269533	773.709	829.945
14) L3 AR-1232-4	6.412	5.434	397425	274470	795.370	929.066
15) L3 AR-1232-5	6.510	5.616	284291	273591	894.887	738.236
16) L4 AR-1242-1	6.215	5.126	542455	349104	479.226	484.457
17) L4 AR-1242-2	6.239	5.146	761507	490901	473.271	491.149
18) L4 AR-1242-3	6.305	5.336	487446	269533	476.136	487.218
19) L4 AR-1242-4	6.412	5.434	397425	274470	484.539	522.421
20) L4 AR-1242-5	7.194	5.995	345152	325126	418.564	503.170
21) L5 AR-1248-1	6.215	5.126	542455	349104	638.429	659.653
22) L5 AR-1248-2	6.510	5.390	284291	196864	262.968	265.067
23) L5 AR-1248-3	6.726	5.434	370836	274470	290.995	348.821
24) L5 AR-1248-4	7.155	5.616	330448	273591	244.752	296.880
25) L5 AR-1248-5	7.194	6.038	345152	282201	261.066	299.756
26) L6 AR-1254-1	7.125	5.995	259454	325126	199.119	243.020
27) L6 AR-1254-2	7.359	6.156	286398	86061	151.423	75.090 #
28) L6 AR-1254-3	7.736	6.573	115775	107190	58.356	56.778
29) L6 AR-1254-4	8.032	6.813	81714	79951	56.938	66.404
30) L6 AR-1254-5	8.461	7.243	25030	26736	17.224	16.201
31) L7 AR-1260-1	0.000	6.718	0	46042	N.D.	35.363 #
32) L7 AR-1260-2	8.146f	6.910	49730	12159	28.885	7.814 #
33) L7 AR-1260-3	0.000	7.060	0	28004	N.D.	18.397 #
35) L7 AR-1260-5	9.082	7.767f	22090	-773	8.320	N.D. #
36) L8 AR-1262-1	0.000	7.243	0	26736	N.D.	29.251 #
37) L8 AR-1262-2	9.082	7.767f	22090	-773	7.773	N.D. #
45) L9 AR-1268-5	0.000	8.915	0	6305	N.D.	0.664 #

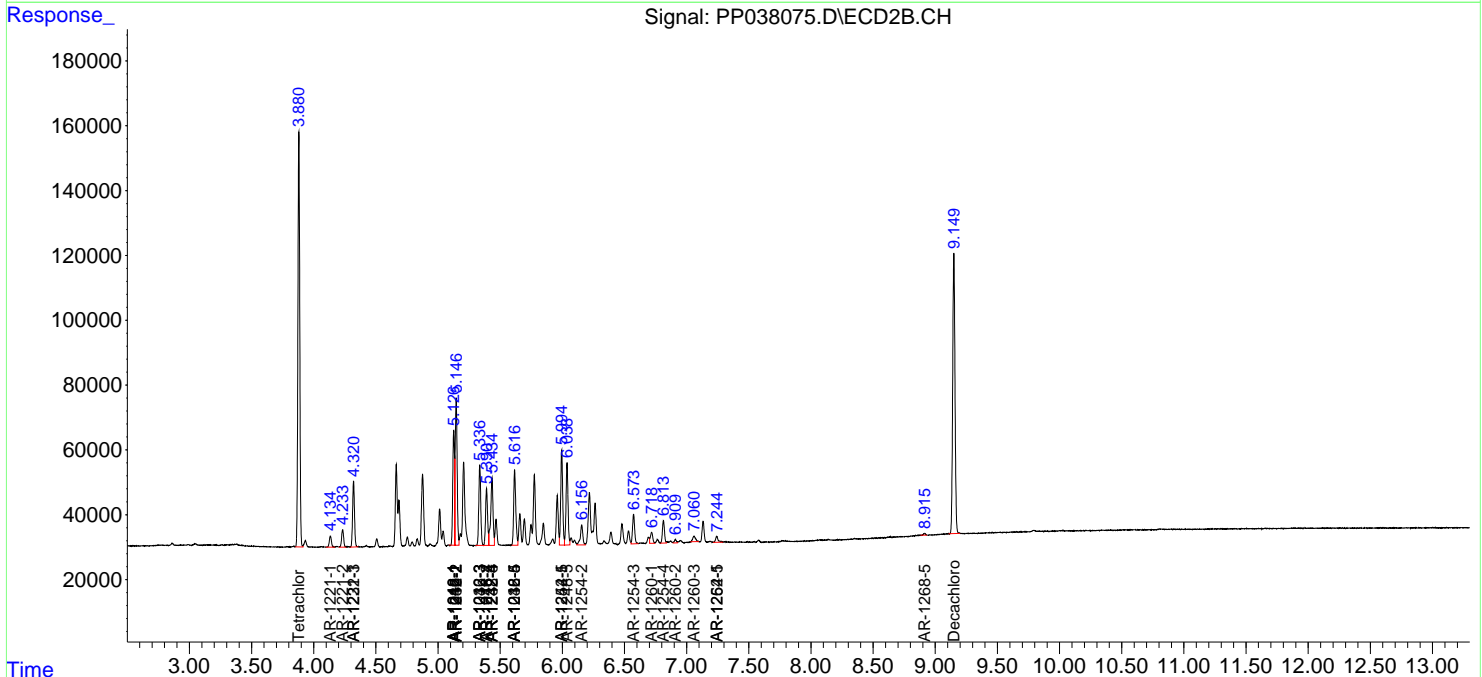
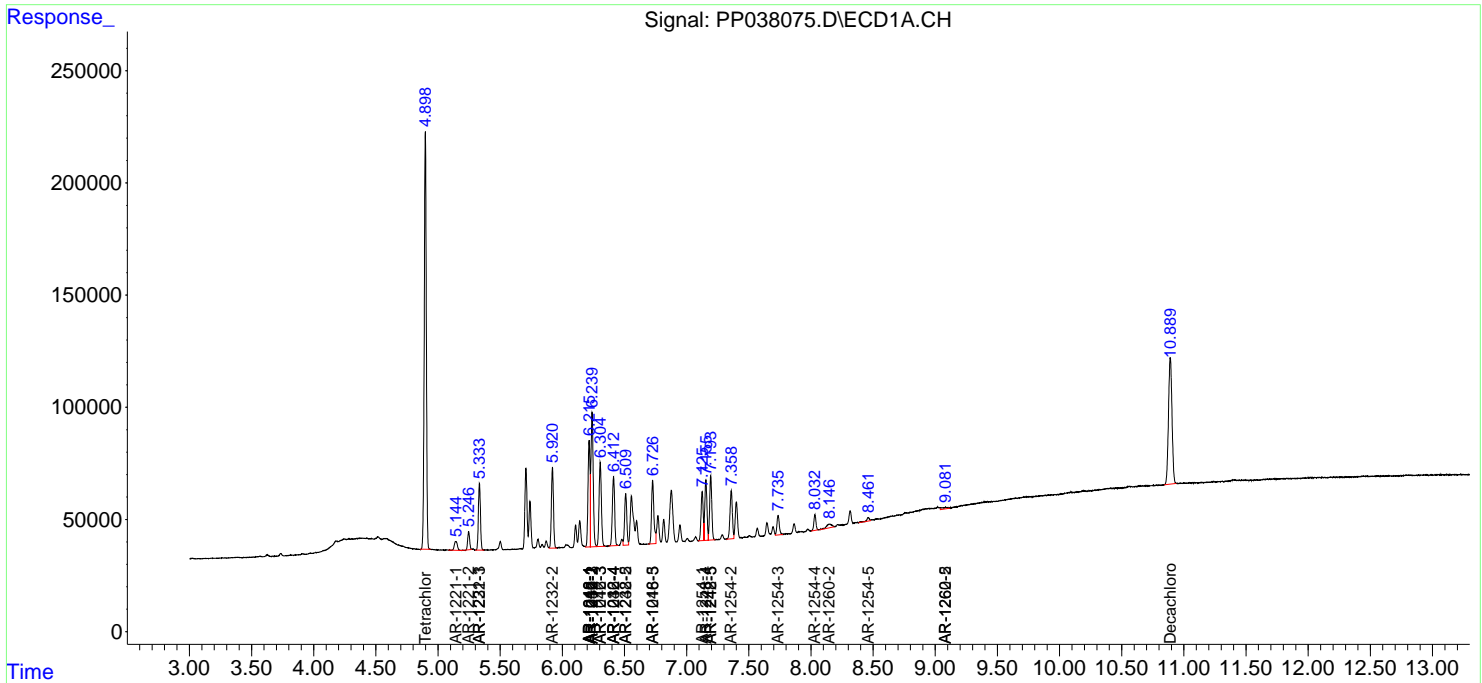
(f)=RT Delta > 1/2 Window (#)=Amounts differ by > 25% (m)=manual int.

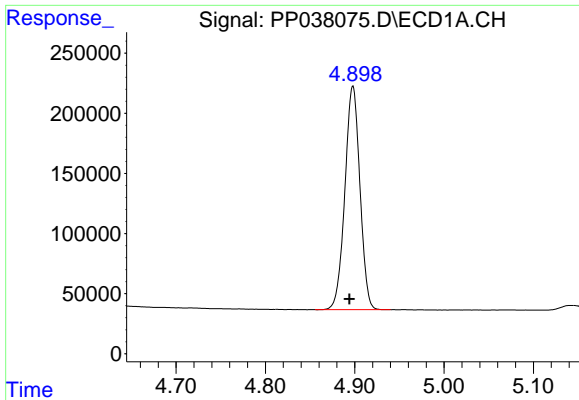
Data Path : Z:\pestpcbsrv\HPCHEM1\ECD\_P\Data\PP080621\  
 Data File : PP038075.D  
 Signal(s) : Signal #1: ECD1A.CH Signal #2: ECD2B.CH  
 Acq On : 06 Aug 2021 14:18  
 Operator : AJ\MA  
 Sample : AR1242CCC500  
 Misc :  
 ALS Vial : 4 Sample Multiplier: 1

Instrument :  
 ECD\_P  
 ClientSampleID :  
 AR1242CCC500

Integration File signal 1: autoint1.e  
 Integration File signal 2: autoint2.e  
 Quant Time: Aug 06 15:36:29 2021  
 Quant Method : Z:\pestpcbsrv\HPCHEM1\ECD\_P\methods\PP080521.M  
 Quant Title : GC EXTRACTABLES  
 QLast Update : Fri Aug 06 03:08:47 2021  
 Response via : Initial Calibration  
 Integrator: ChemStation 6890 Scale Mode: Small noise peaks clipped

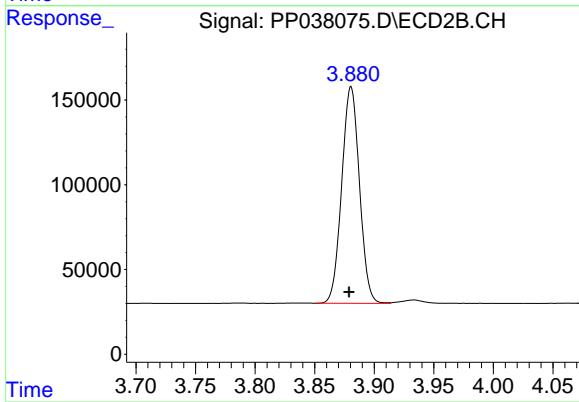
Volume Inj. : 2 µl  
 Signal #1 Phase : ZB-MR1 Signal #2 Phase: ZB-MR2  
 Signal #1 Info : 30Mx0.32mmx 0.50µ Signal #2 Info : 30M x 0.32mm x 0.25µm



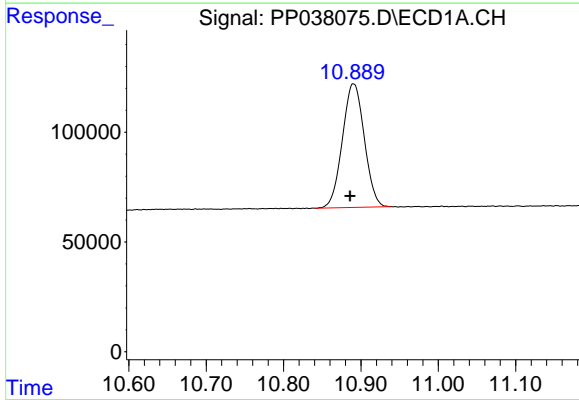


#1 Tetrachloro-m-xylene  
R.T.: 4.898 min  
Delta R.T.: 0.004 min  
Response: 2175607  
Conc: 48.95 ng/ml

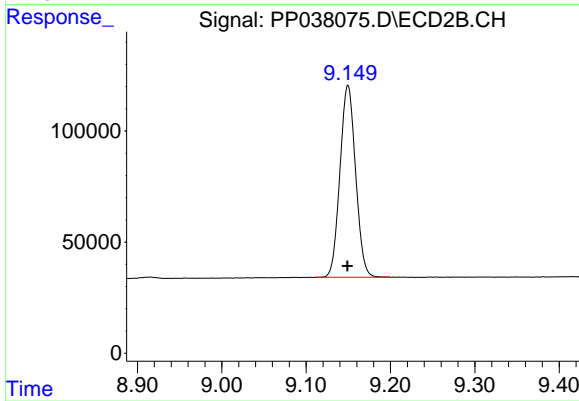
Instrument :  
ECD\_P  
ClientSampleId :  
AR1242CCC500



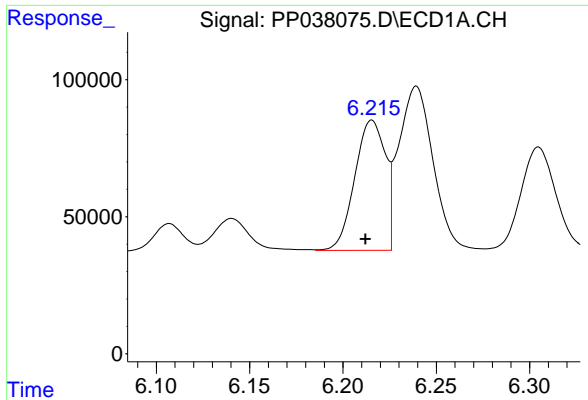
#1 Tetrachloro-m-xylene  
R.T.: 3.881 min  
Delta R.T.: 0.002 min  
Response: 1322770  
Conc: 51.36 ng/ml



#2 Decachlorobiphenyl  
R.T.: 10.890 min  
Delta R.T.: 0.005 min  
Response: 1108532  
Conc: 48.73 ng/ml



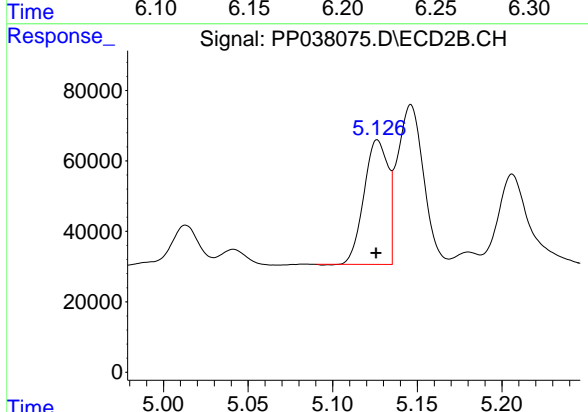
#2 Decachlorobiphenyl  
R.T.: 9.150 min  
Delta R.T.: 0.000 min  
Response: 1112905  
Conc: 43.01 ng/ml



#3 AR-1016-1

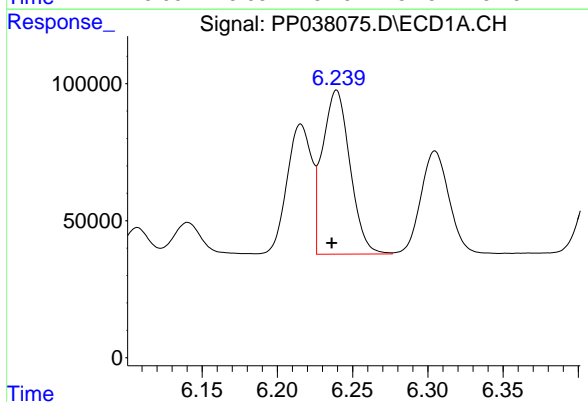
R.T.: 6.215 min  
 Delta R.T.: 0.003 min  
 Response: 542455  
 Conc: 365.27 ng/ml

Instrument :  
 ECD\_P  
 ClientSampleId :  
 AR1242CCC500



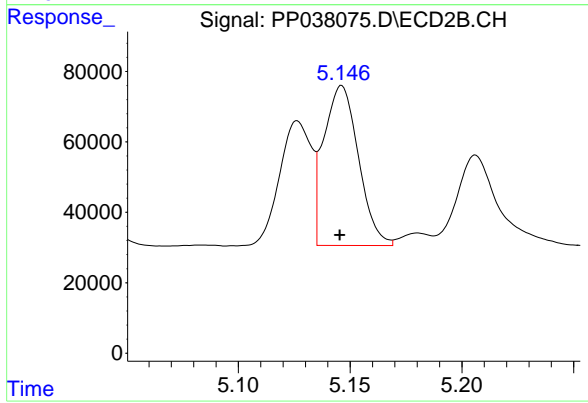
#3 AR-1016-1

R.T.: 5.126 min  
 Delta R.T.: 0.000 min  
 Response: 349104  
 Conc: 361.43 ng/ml



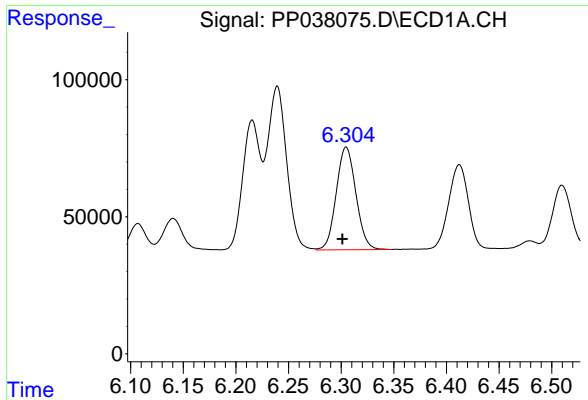
#4 AR-1016-2

R.T.: 6.239 min  
 Delta R.T.: 0.003 min  
 Response: 761507  
 Conc: 357.56 ng/ml



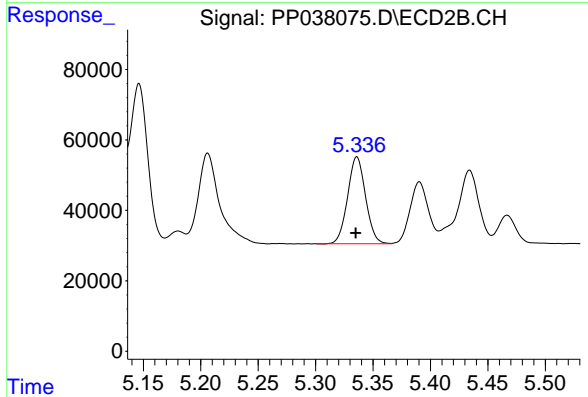
#4 AR-1016-2

R.T.: 5.146 min  
 Delta R.T.: 0.000 min  
 Response: 490901  
 Conc: 366.43 ng/ml

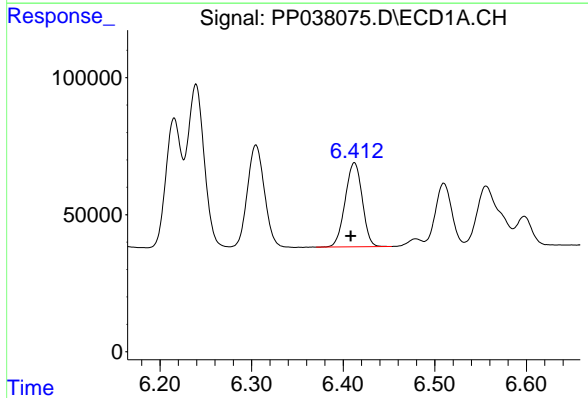


#5 AR-1016-3  
 R.T.: 6.305 min  
 Delta R.T.: 0.004 min  
 Response: 487446  
 Conc: 366.80 ng/ml

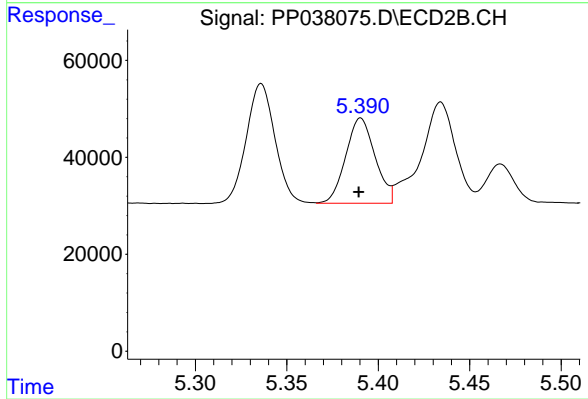
Instrument :  
 ECD\_P  
 ClientSampled :  
 AR1242CCC500



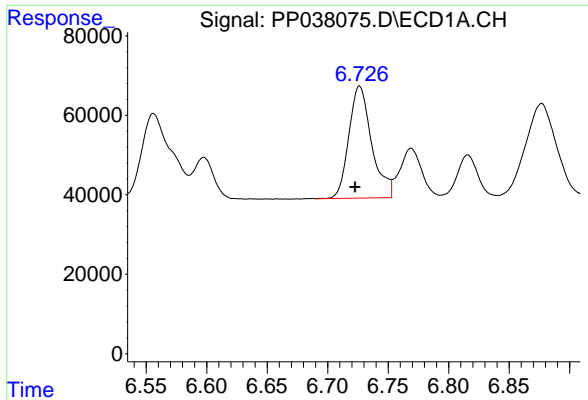
#5 AR-1016-3  
 R.T.: 5.336 min  
 Delta R.T.: 0.001 min  
 Response: 269533  
 Conc: 366.35 ng/ml



#6 AR-1016-4  
 R.T.: 6.412 min  
 Delta R.T.: 0.004 min  
 Response: 397425  
 Conc: 366.05 ng/ml

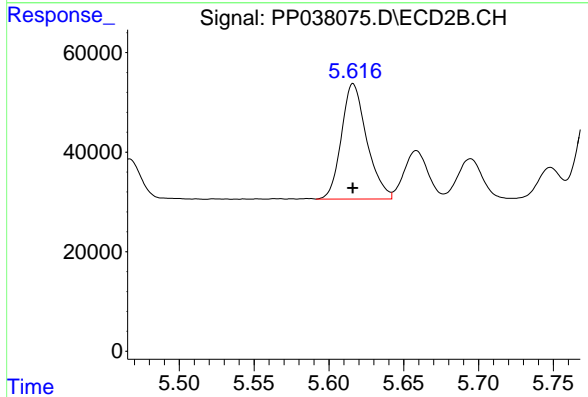


#6 AR-1016-4  
 R.T.: 5.390 min  
 Delta R.T.: 0.001 min  
 Response: 196864  
 Conc: 346.57 ng/ml

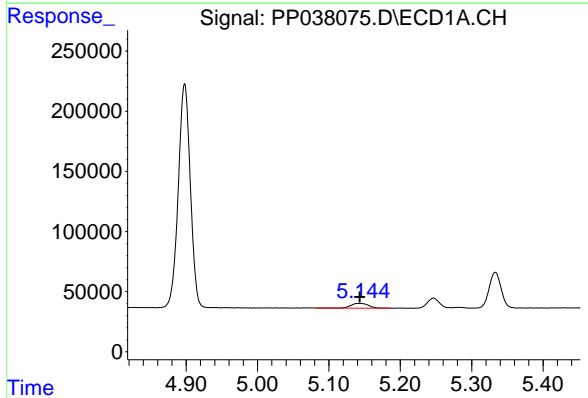


#7 AR-1016-5  
 R.T.: 6.726 min  
 Delta R.T.: 0.004 min  
 Response: 370836  
 Conc: 369.79 ng/ml

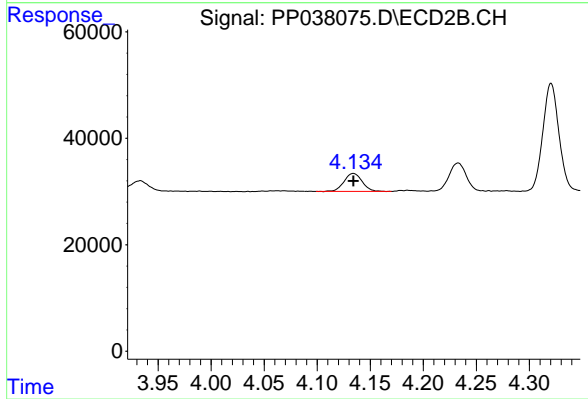
Instrument :  
 ECD\_P  
 ClientSampleId :  
 AR1242CCC500



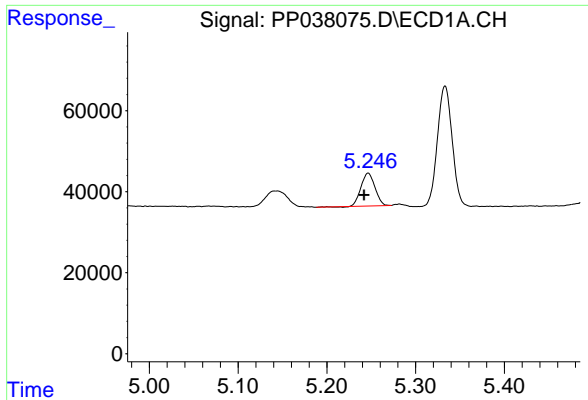
#7 AR-1016-5  
 R.T.: 5.616 min  
 Delta R.T.: 0.000 min  
 Response: 273591  
 Conc: 356.55 ng/ml



#8 AR-1221-1  
 R.T.: 5.145 min  
 Delta R.T.: 0.002 min  
 Response: 67265  
 Conc: 124.10 ng/ml

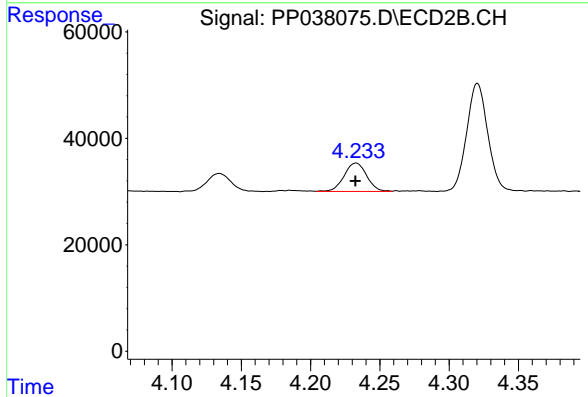


#8 AR-1221-1  
 R.T.: 4.134 min  
 Delta R.T.: 0.000 min  
 Response: 40372  
 Conc: 134.21 ng/ml

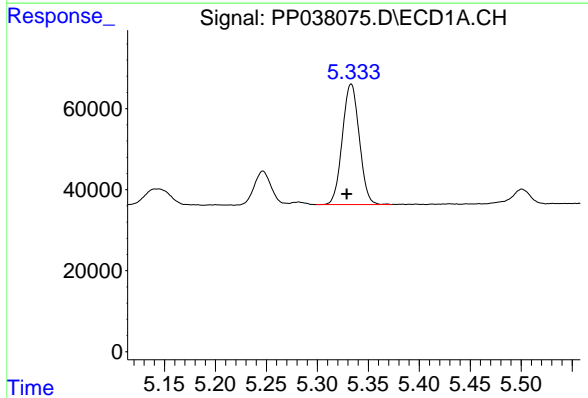


#9 AR-1221-2  
 R.T.: 5.247 min  
 Delta R.T.: 0.005 min  
 Response: 88371  
 Conc: 218.68 ng/ml

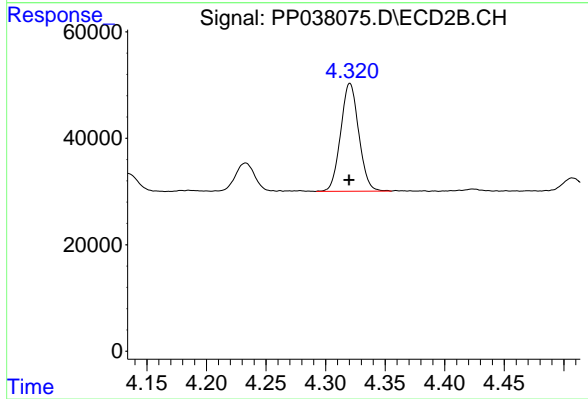
Instrument :  
 ECD\_P  
 ClientSampleId :  
 AR1242CCC500



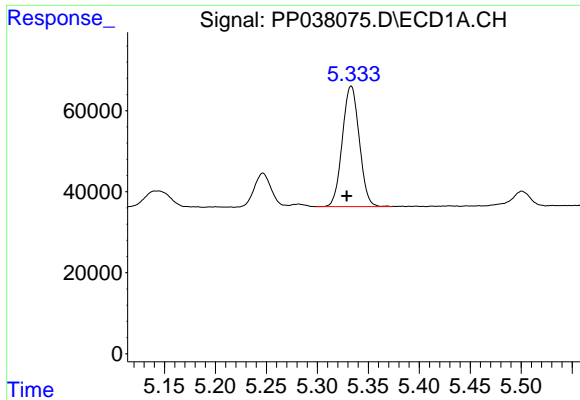
#9 AR-1221-2  
 R.T.: 4.233 min  
 Delta R.T.: 0.000 min  
 Response: 60866  
 Conc: 258.61 ng/ml



#10 AR-1221-3  
 R.T.: 5.333 min  
 Delta R.T.: 0.005 min  
 Response: 344229  
 Conc: 285.75 ng/ml

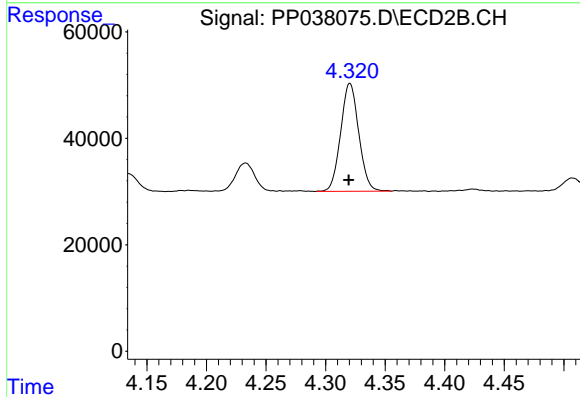


#10 AR-1221-3  
 R.T.: 4.321 min  
 Delta R.T.: 0.000 min  
 Response: 214522  
 Conc: 290.91 ng/ml

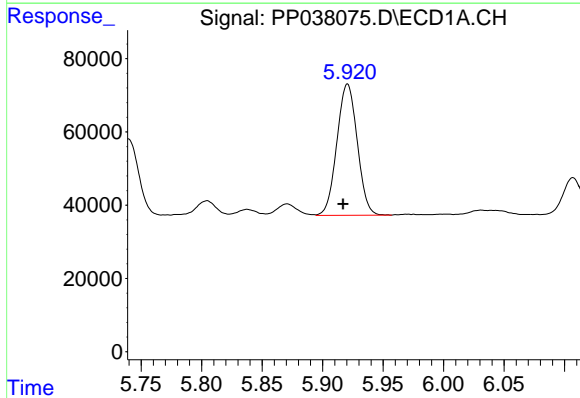


#11 AR-1232-1  
 R.T.: 5.333 min  
 Delta R.T.: 0.004 min  
 Response: 344229  
 Conc: 311.24 ng/ml

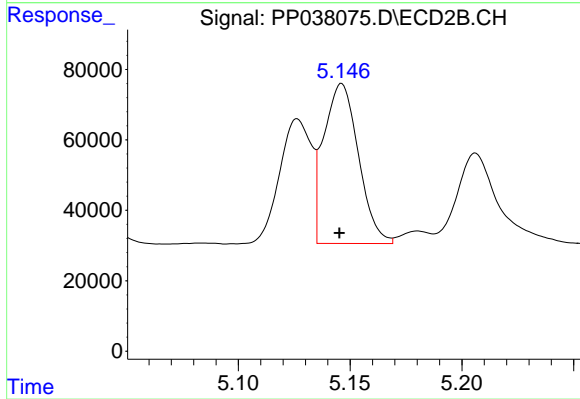
Instrument :  
 ECD\_P  
 ClientSampleId :  
 AR1242CCC500



#11 AR-1232-1  
 R.T.: 4.321 min  
 Delta R.T.: 0.001 min  
 Response: 214522  
 Conc: 316.45 ng/ml

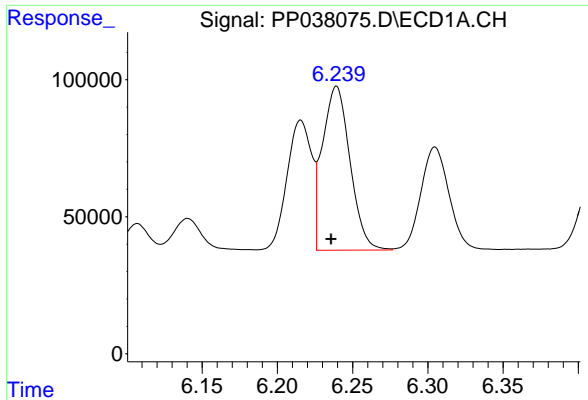


#12 AR-1232-2  
 R.T.: 5.921 min  
 Delta R.T.: 0.004 min  
 Response: 420733  
 Conc: 771.13 ng/ml



#12 AR-1232-2  
 R.T.: 5.146 min  
 Delta R.T.: 0.000 min  
 Response: 490901  
 Conc: 806.24 ng/ml

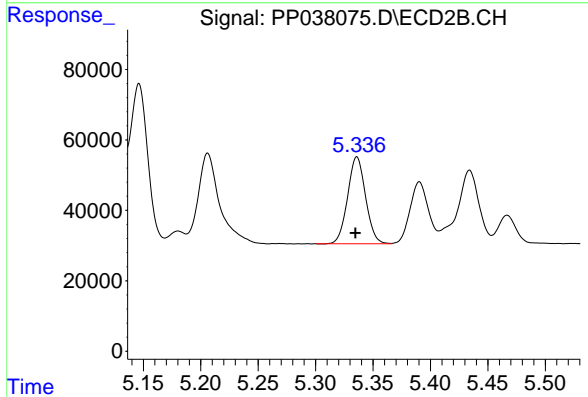




#13 AR-1232-3

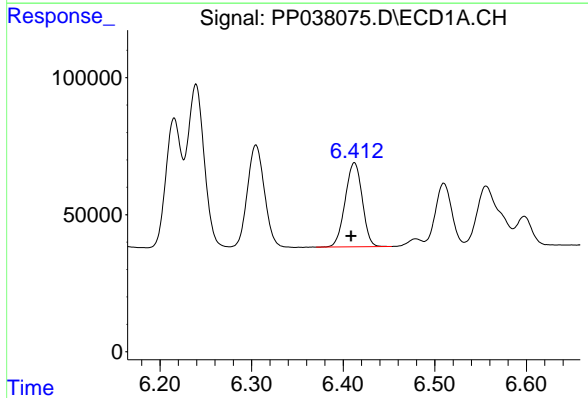
R.T.: 6.239 min  
 Delta R.T.: 0.004 min  
 Response: 761507  
 Conc: 773.71 ng/ml

Instrument :  
 ECD\_P  
 ClientSampleId :  
 AR1242CCC500



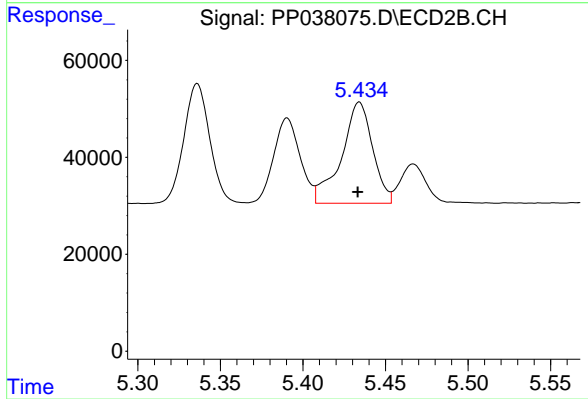
#13 AR-1232-3

R.T.: 5.336 min  
 Delta R.T.: 0.001 min  
 Response: 269533  
 Conc: 829.94 ng/ml



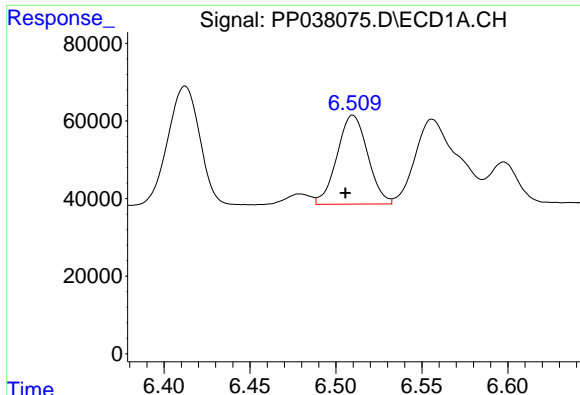
#14 AR-1232-4

R.T.: 6.412 min  
 Delta R.T.: 0.003 min  
 Response: 397425  
 Conc: 795.37 ng/ml



#14 AR-1232-4

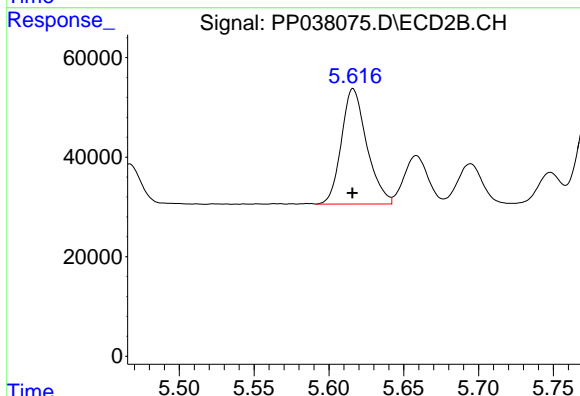
R.T.: 5.434 min  
 Delta R.T.: 0.001 min  
 Response: 274470  
 Conc: 929.07 ng/ml



#15 AR-1232-5

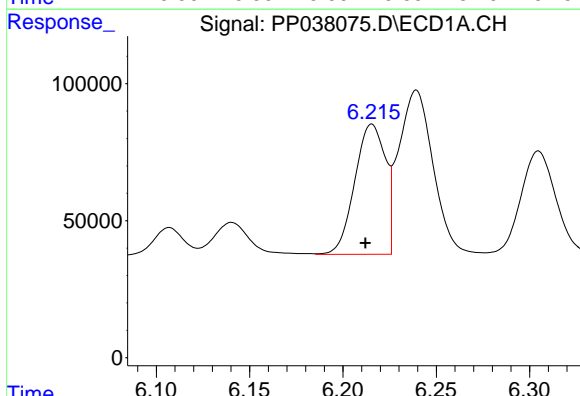
R.T.: 6.510 min  
 Delta R.T.: 0.004 min  
 Response: 284291  
 Conc: 894.89 ng/ml

Instrument :  
 ECD\_P  
 ClientSampleId :  
 AR1242CCC500



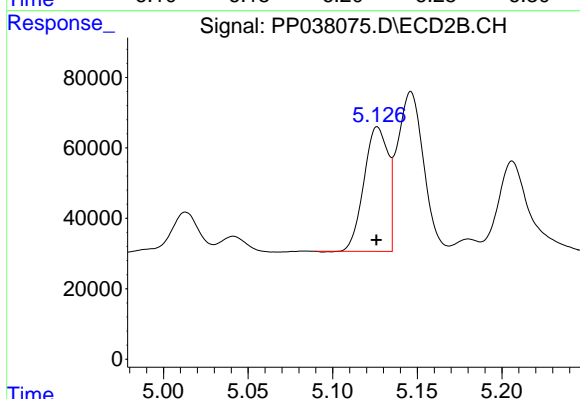
#15 AR-1232-5

R.T.: 5.616 min  
 Delta R.T.: 0.000 min  
 Response: 273591  
 Conc: 738.24 ng/ml



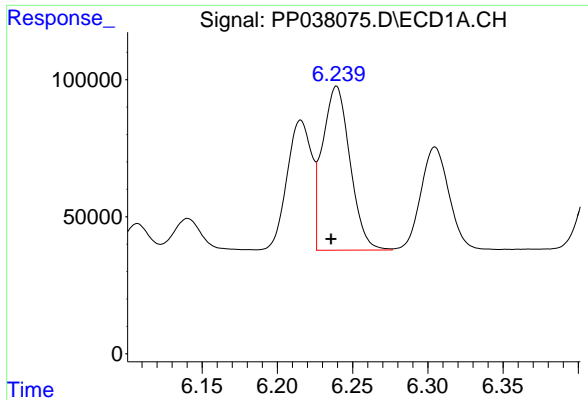
#16 AR-1242-1

R.T.: 6.215 min  
 Delta R.T.: 0.003 min  
 Response: 542455  
 Conc: 479.23 ng/ml



#16 AR-1242-1

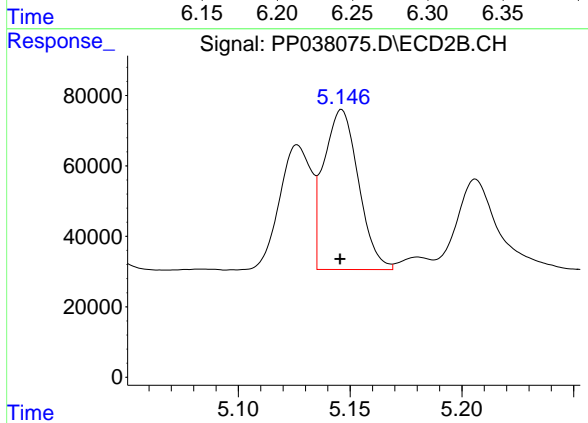
R.T.: 5.126 min  
 Delta R.T.: 0.000 min  
 Response: 349104  
 Conc: 484.46 ng/ml



#17 AR-1242-2

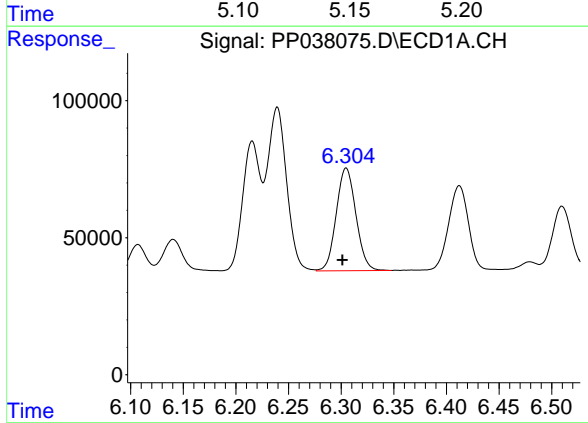
R.T.: 6.239 min  
 Delta R.T.: 0.004 min  
 Response: 761507  
 Conc: 473.27 ng/ml

Instrument :  
 ECD\_P  
 ClientSampleId :  
 AR1242CCC500



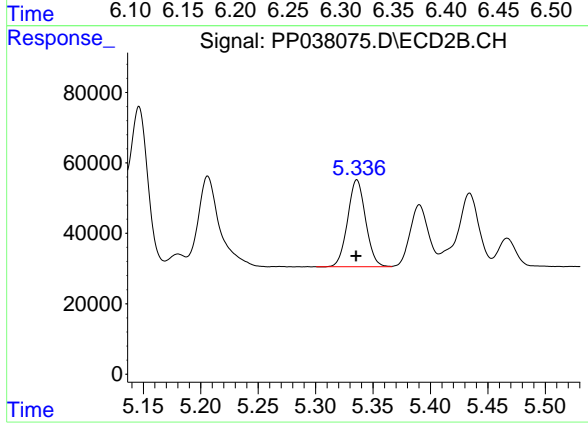
#17 AR-1242-2

R.T.: 5.146 min  
 Delta R.T.: 0.000 min  
 Response: 490901  
 Conc: 491.15 ng/ml



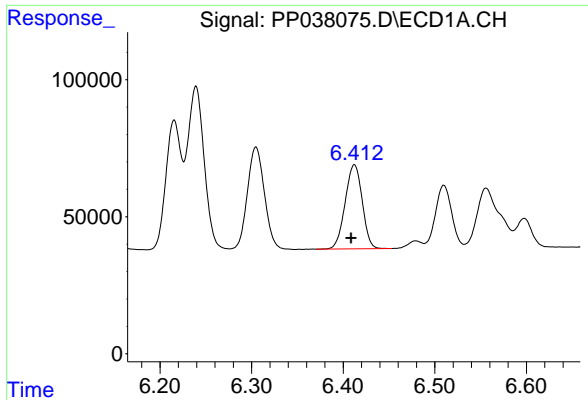
#18 AR-1242-3

R.T.: 6.305 min  
 Delta R.T.: 0.003 min  
 Response: 487446  
 Conc: 476.14 ng/ml



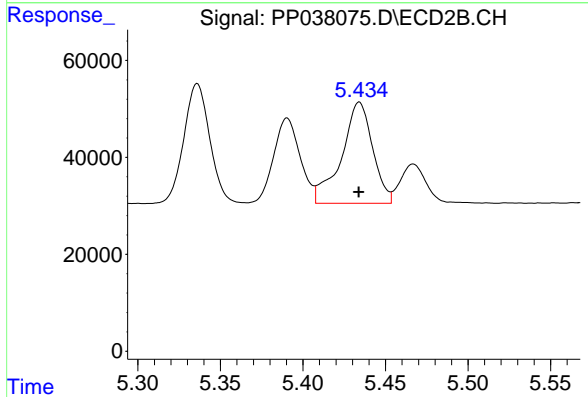
#18 AR-1242-3

R.T.: 5.336 min  
 Delta R.T.: 0.000 min  
 Response: 269533  
 Conc: 487.22 ng/ml

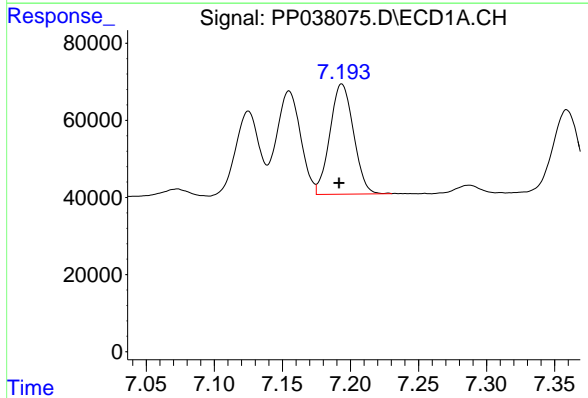


#19 AR-1242-4  
 R.T.: 6.412 min  
 Delta R.T.: 0.004 min  
 Response: 397425  
 Conc: 484.54 ng/ml

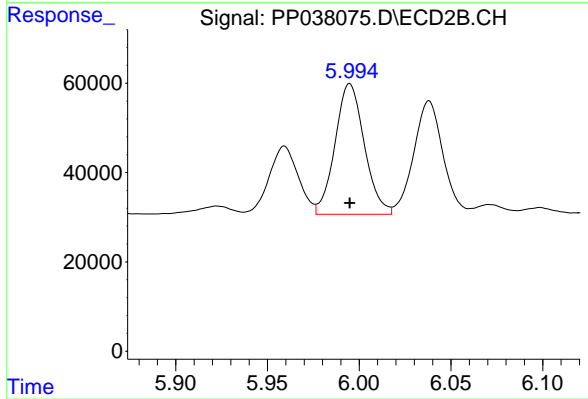
Instrument :  
 ECD\_P  
 ClientSampleId :  
 AR1242CCC500



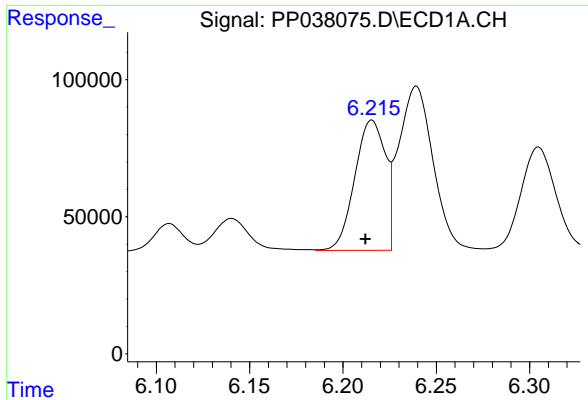
#19 AR-1242-4  
 R.T.: 5.434 min  
 Delta R.T.: 0.000 min  
 Response: 274470  
 Conc: 522.42 ng/ml



#20 AR-1242-5  
 R.T.: 7.194 min  
 Delta R.T.: 0.002 min  
 Response: 345152  
 Conc: 418.56 ng/ml



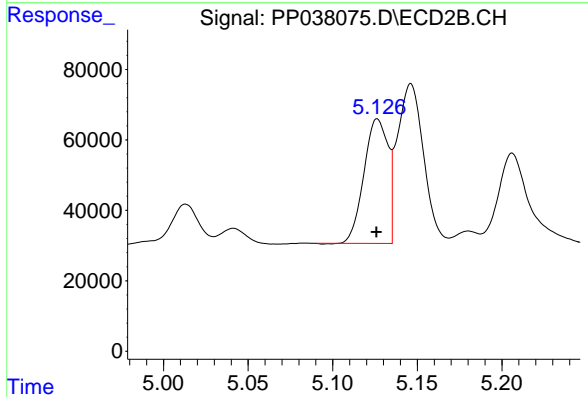
#20 AR-1242-5  
 R.T.: 5.995 min  
 Delta R.T.: 0.000 min  
 Response: 325126  
 Conc: 503.17 ng/ml



#21 AR-1248-1

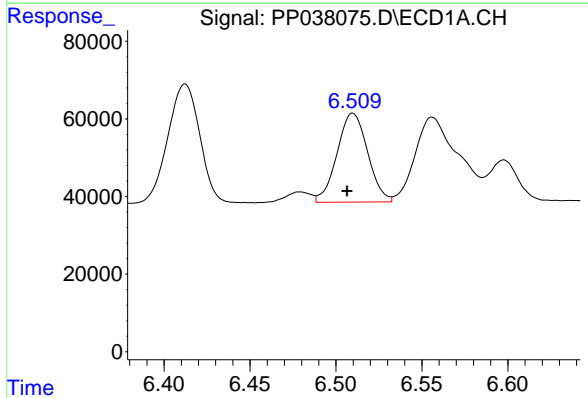
R.T.: 6.215 min  
 Delta R.T.: 0.003 min  
 Response: 542455  
 Conc: 638.43 ng/ml

Instrument :  
 ECD\_P  
 ClientSampleId :  
 AR1242CCC500



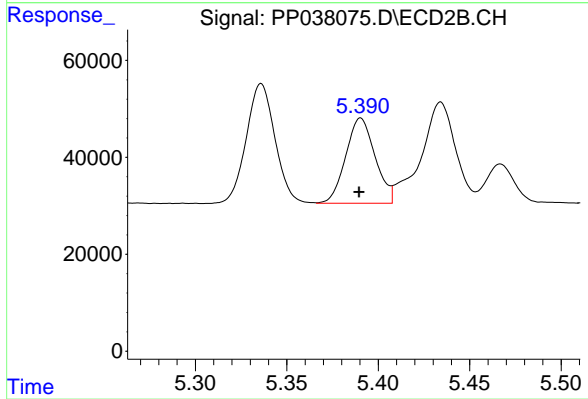
#21 AR-1248-1

R.T.: 5.126 min  
 Delta R.T.: 0.000 min  
 Response: 349104  
 Conc: 659.65 ng/ml



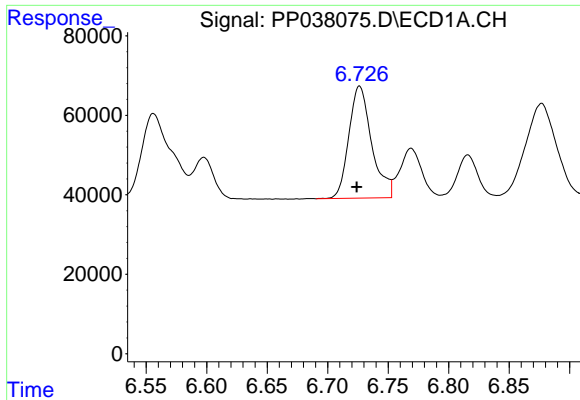
#22 AR-1248-2

R.T.: 6.510 min  
 Delta R.T.: 0.003 min  
 Response: 284291  
 Conc: 262.97 ng/ml



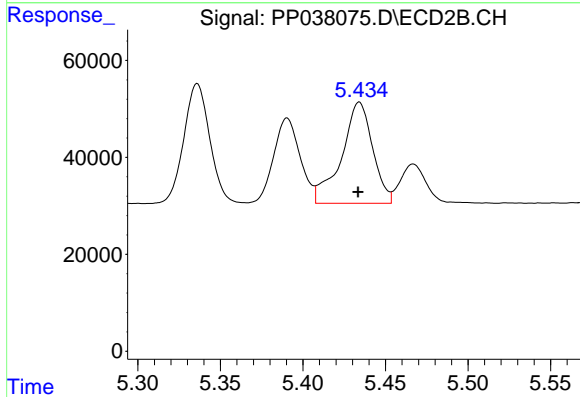
#22 AR-1248-2

R.T.: 5.390 min  
 Delta R.T.: 0.000 min  
 Response: 196864  
 Conc: 265.07 ng/ml

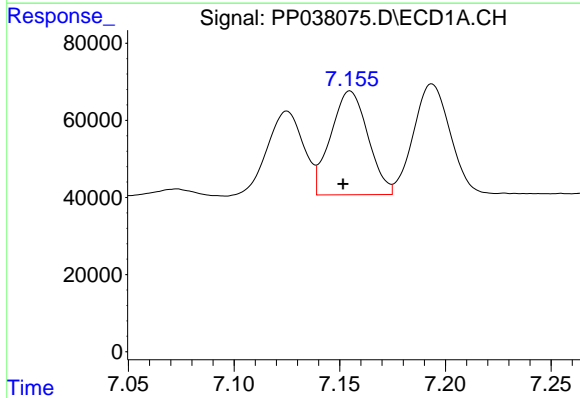


#23 AR-1248-3  
 R.T.: 6.726 min  
 Delta R.T.: 0.003 min  
 Response: 370836  
 Conc: 291.00 ng/ml

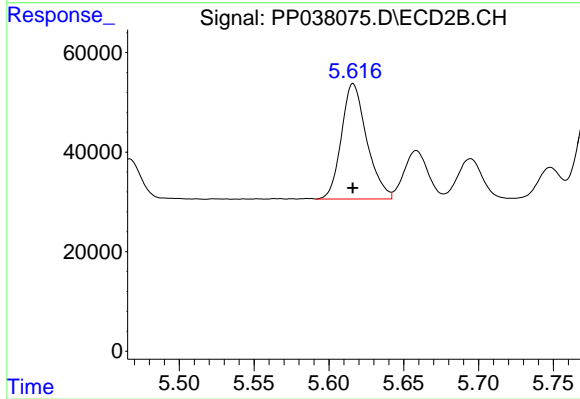
Instrument :  
 ECD\_P  
 ClientSampleId :  
 AR1242CCC500



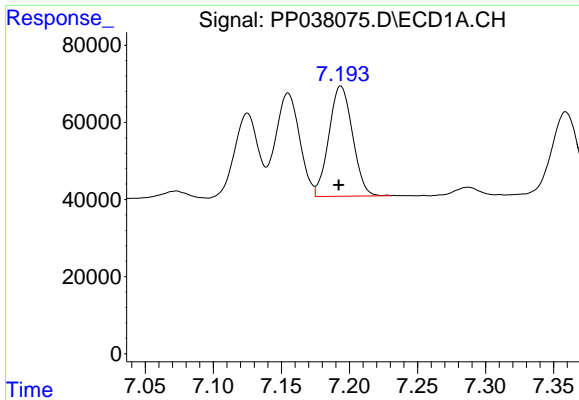
#23 AR-1248-3  
 R.T.: 5.434 min  
 Delta R.T.: 0.000 min  
 Response: 274470  
 Conc: 348.82 ng/ml



#24 AR-1248-4  
 R.T.: 7.155 min  
 Delta R.T.: 0.003 min  
 Response: 330448  
 Conc: 244.75 ng/ml



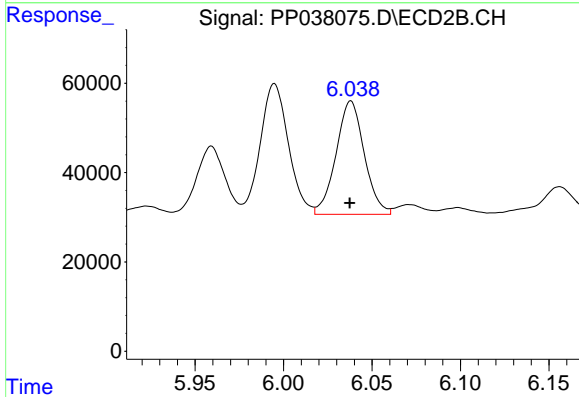
#24 AR-1248-4  
 R.T.: 5.616 min  
 Delta R.T.: 0.000 min  
 Response: 273591  
 Conc: 296.88 ng/ml



#25 AR-1248-5

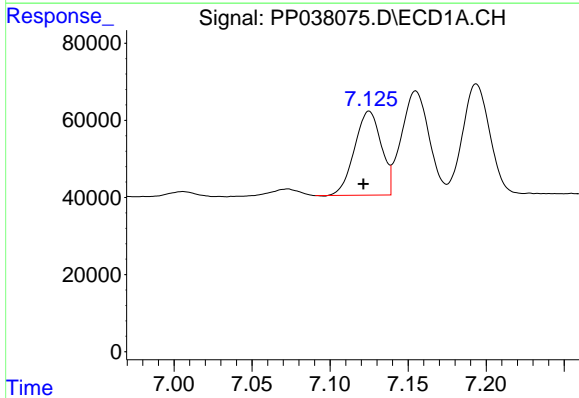
R.T.: 7.194 min  
 Delta R.T.: 0.002 min  
 Response: 345152  
 Conc: 261.07 ng/ml

Instrument :  
 ECD\_P  
 ClientSampleId :  
 AR1242CCC500



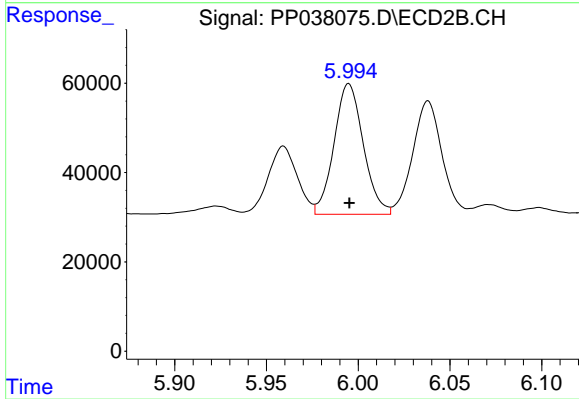
#25 AR-1248-5

R.T.: 6.038 min  
 Delta R.T.: 0.000 min  
 Response: 282201  
 Conc: 299.76 ng/ml



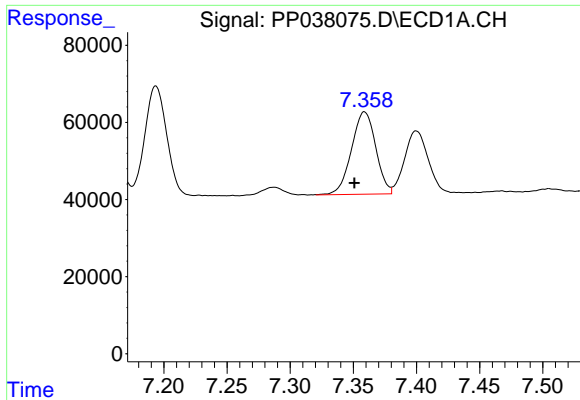
#26 AR-1254-1

R.T.: 7.125 min  
 Delta R.T.: 0.004 min  
 Response: 259454  
 Conc: 199.12 ng/ml



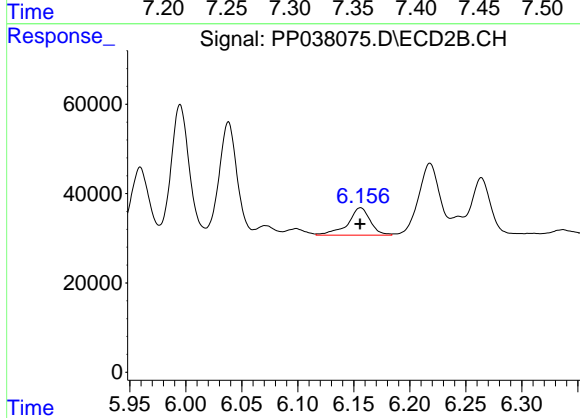
#26 AR-1254-1

R.T.: 5.995 min  
 Delta R.T.: 0.000 min  
 Response: 325126  
 Conc: 243.02 ng/ml

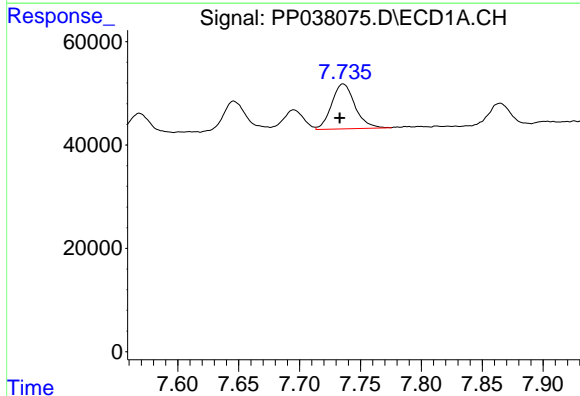


#27 AR-1254-2  
 R.T.: 7.359 min  
 Delta R.T.: 0.008 min  
 Response: 286398  
 Conc: 151.42 ng/ml

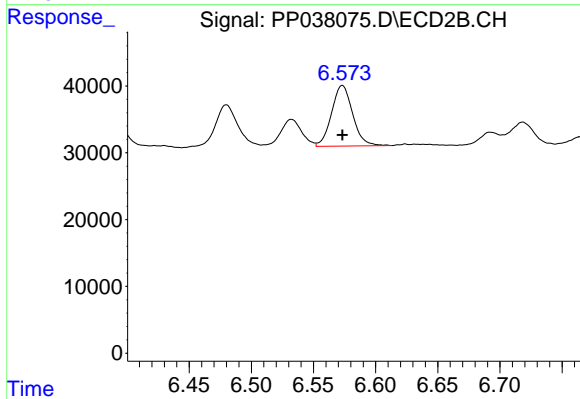
Instrument :  
 ECD\_P  
 ClientSampleId :  
 AR1242CCC500



#27 AR-1254-2  
 R.T.: 6.156 min  
 Delta R.T.: 0.000 min  
 Response: 86061  
 Conc: 75.09 ng/ml

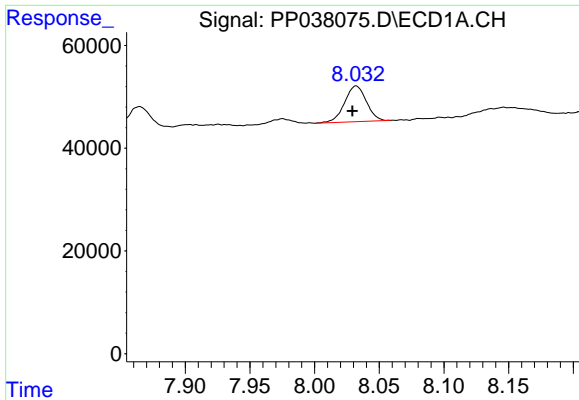


#28 AR-1254-3  
 R.T.: 7.736 min  
 Delta R.T.: 0.003 min  
 Response: 115775  
 Conc: 58.36 ng/ml



#28 AR-1254-3  
 R.T.: 6.573 min  
 Delta R.T.: 0.000 min  
 Response: 107190  
 Conc: 56.78 ng/ml

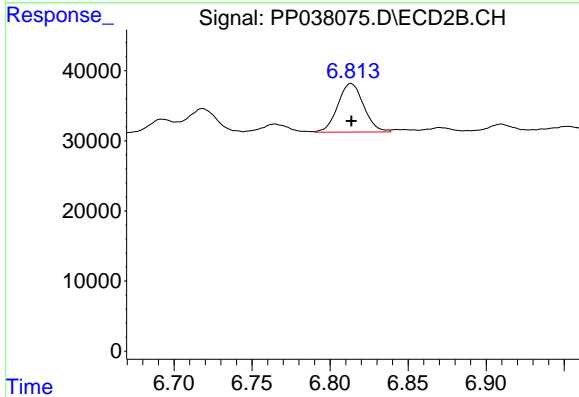




#29 AR-1254-4

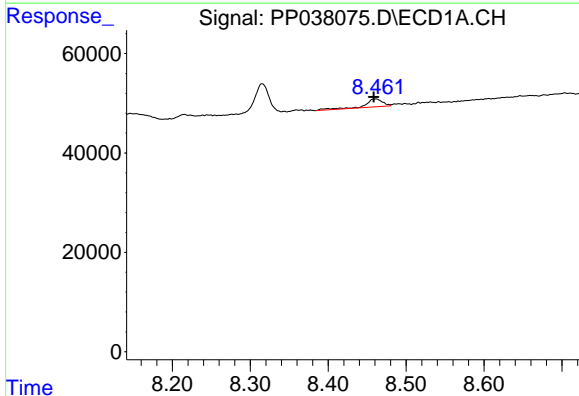
R.T.: 8.032 min  
 Delta R.T.: 0.003 min  
 Response: 81714  
 Conc: 56.94 ng/ml

Instrument :  
 ECD\_P  
 ClientSampleId :  
 AR1242CCC500



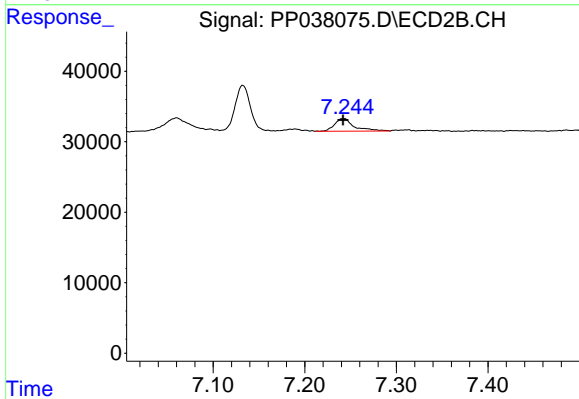
#29 AR-1254-4

R.T.: 6.813 min  
 Delta R.T.: 0.000 min  
 Response: 79951  
 Conc: 66.40 ng/ml



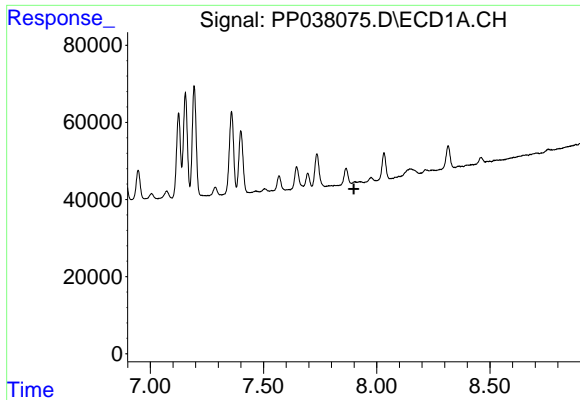
#30 AR-1254-5

R.T.: 8.461 min  
 Delta R.T.: 0.003 min  
 Response: 25030  
 Conc: 17.22 ng/ml



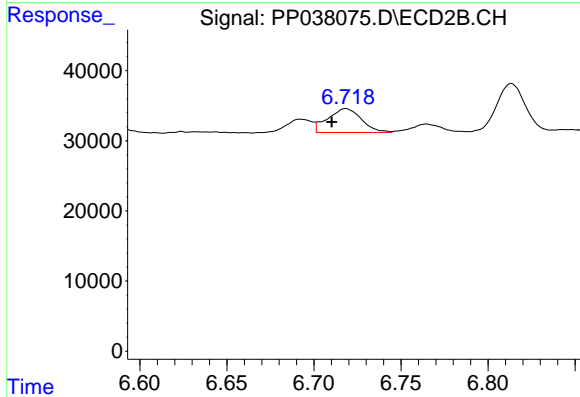
#30 AR-1254-5

R.T.: 7.243 min  
 Delta R.T.: 0.000 min  
 Response: 26736  
 Conc: 16.20 ng/ml

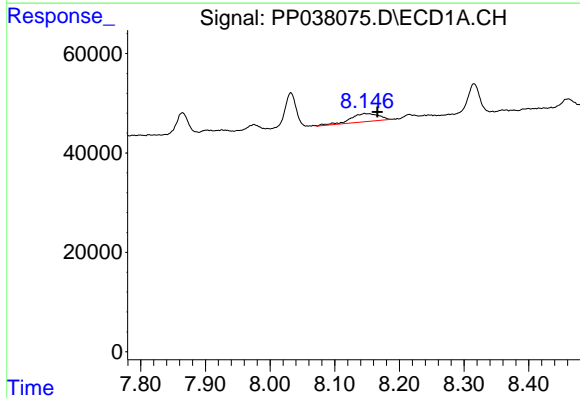


#31 AR-1260-1  
 R.T.: 0.000 min  
 Exp R.T.: 7.899 min  
 Response: 0  
 Conc: N.D.

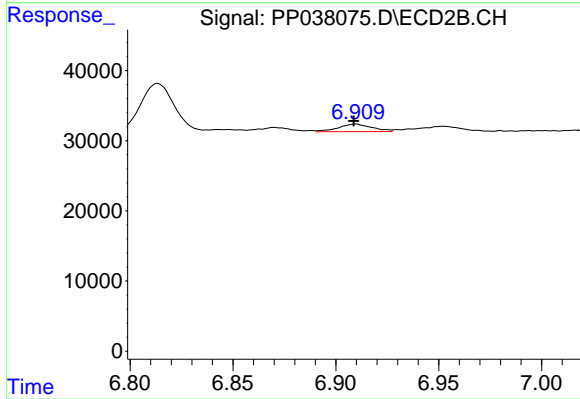
Instrument :  
 ECD\_P  
 ClientSampleId :  
 AR1242CCC500



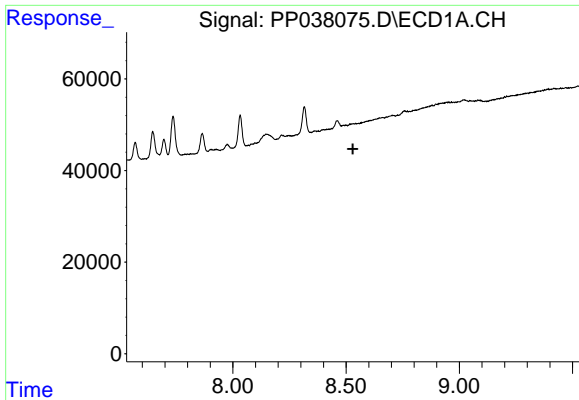
#31 AR-1260-1  
 R.T.: 6.718 min  
 Delta R.T.: 0.008 min  
 Response: 46042  
 Conc: 35.36 ng/ml



#32 AR-1260-2  
 R.T.: 8.146 min  
 Delta R.T.: -0.020 min  
 Response: 49730  
 Conc: 28.89 ng/ml



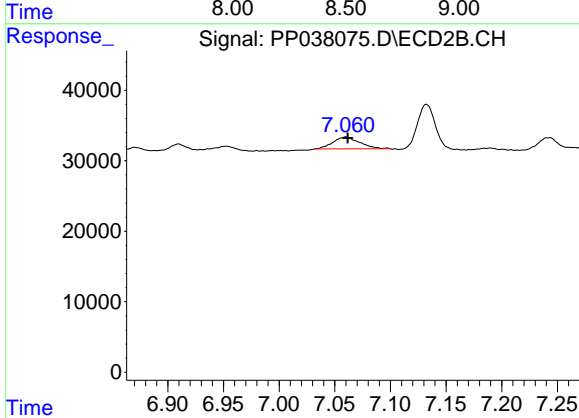
#32 AR-1260-2  
 R.T.: 6.910 min  
 Delta R.T.: 0.000 min  
 Response: 12159  
 Conc: 7.81 ng/ml



#33 AR-1260-3

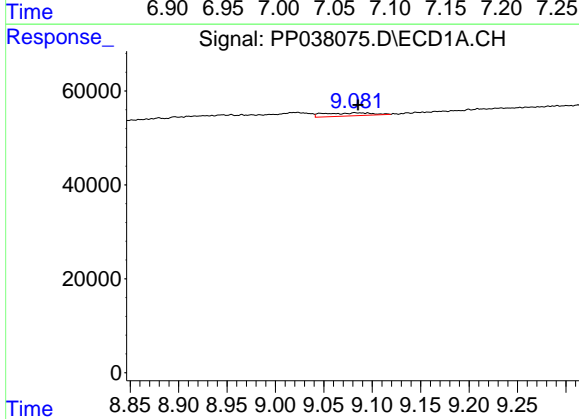
R.T.: 0.000 min  
 Exp R.T.: 8.530 min  
 Response: 0  
 Conc: N.D.

**Instrument :**  
 ECD\_P  
**ClientSampleId :**  
 AR1242CCC500



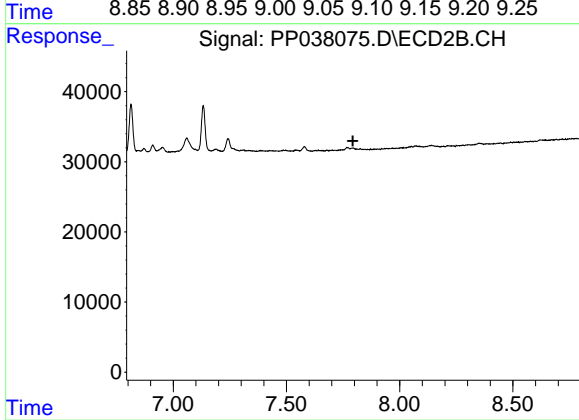
#33 AR-1260-3

R.T.: 7.060 min  
 Delta R.T.: -0.002 min  
 Response: 28004  
 Conc: 18.40 ng/ml



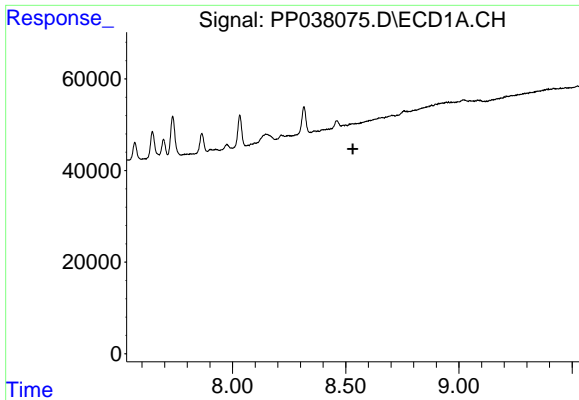
#35 AR-1260-5

R.T.: 9.082 min  
 Delta R.T.: -0.004 min  
 Response: 22090  
 Conc: 8.32 ng/ml



#35 AR-1260-5

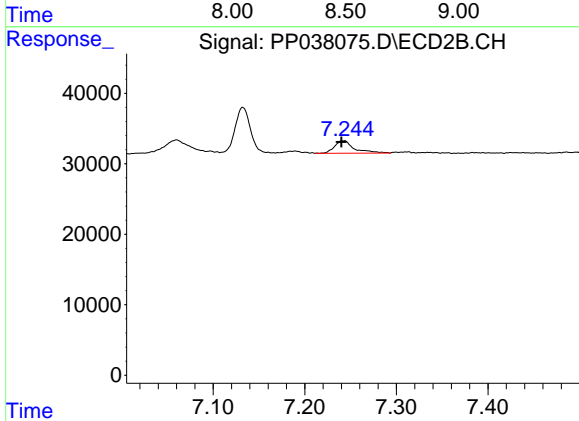
R.T.: 7.767 min  
 Delta R.T.: -0.026 min  
 Response: -773  
 Conc: N.D.



#36 AR-1262-1

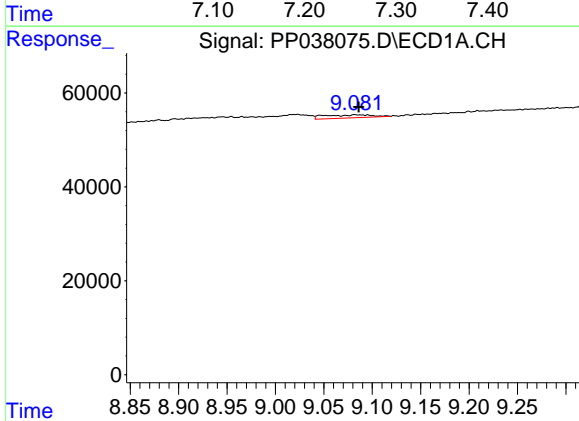
R.T.: 0.000 min  
 Exp R.T.: 8.531 min  
 Response: 0  
 Conc: N.D.

**Instrument :**  
 ECD\_P  
**ClientSampleId :**  
 AR1242CCC500



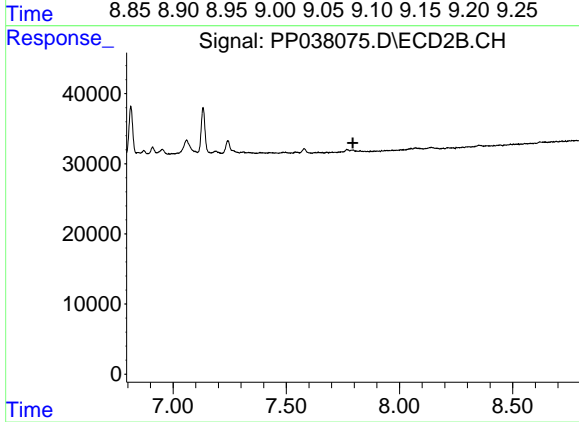
#36 AR-1262-1

R.T.: 7.243 min  
 Delta R.T.: 0.002 min  
 Response: 26736  
 Conc: 29.25 ng/ml



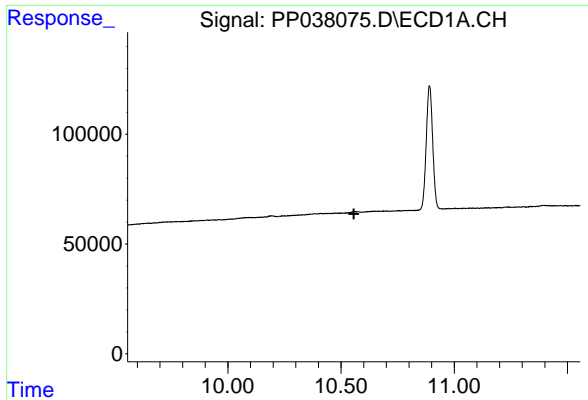
#37 AR-1262-2

R.T.: 9.082 min  
 Delta R.T.: -0.004 min  
 Response: 22090  
 Conc: 7.77 ng/ml



#37 AR-1262-2

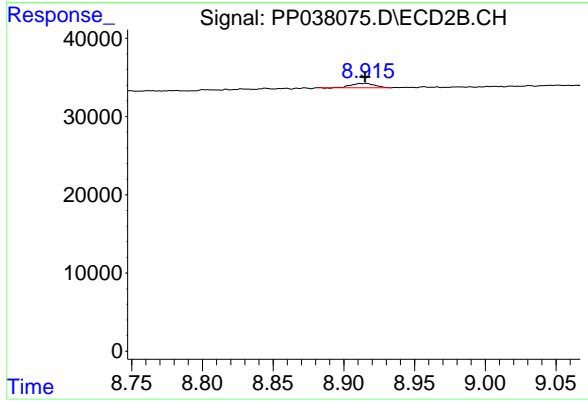
R.T.: 7.767 min  
 Delta R.T.: -0.027 min  
 Response: -773  
 Conc: N.D.



#45 AR-1268-5

R.T.: 0.000 min  
 Exp R.T.: 10.557 min  
 Response: 0  
 Conc: N.D.

**Instrument :**  
 ECD\_P  
**ClientSampled :**  
 AR1242CCC500



#45 AR-1268-5

R.T.: 8.915 min  
 Delta R.T.: 0.000 min  
 Response: 6305  
 Conc: 0.66 ng/ml